

ASSESSMENT TAX LIST

Shelby

1848

Shingobee
Fernand Petersons NW of NW Sec 9-141-31
" " SW of NW " 9-141-31

cut to \$160. for 40

check spelling of Martin Jackson ^{or Johnson}
Page 14

E Collins should have homestead on
NW of SW Sec. 27-141-31

Arnold Nelson Lot 2 Section 31-141-31
cut to 500 ^{300 land} _{300 bldg} No change

NE 1/4 of NE 1/4 of 33-141-31 No Homestead

Lot 5 listed to Mary Erickson should
be to Bob. Backer, Jr. with house at
\$716. And plat of ^{lot} page 86?

Lot 6 Auditor's plat listed to James Kaylor
home should be reduced to \$200.

Boise gypsum building to 965-

SUMMARY OF TAX COLLECTION

Original Levy - - - - - \$

Additions - - - - - \$

Abatements - - - - - \$

COLLECTIONS

March Settlement - - - - - \$ 2,973.39

June Settlement - - - - - \$ 8457.79

November Settlement - - - - - \$ 3,633.77

January Settlement - - - - - \$

Over Collected - - - - - \$

Under Collected - - - - - \$

Delinquent - - - - - \$

Total - - - - - \$

Treasurer's Office, Cass County, Minnesota

RECEIVED this, the first Monday (being the 3rd day) of January, A. D. 1949, of L. C. Peterson, Auditor of said County, Minnesota, the Tax List of all Taxable Real and Personal Property in the Town of Shingabeu, in said County for the year A. D. 1948, as specified above and amounting to 100 Dollars

Paul S. Jewell
County Treasurer

Auditor's Office, Cass County, Minnesota

I, _____ Auditor of said County, and State of Minnesota, do hereby certify that the following is a correct list of the Taxes levied on the Real and Personal Property in the _____ of _____ for the year 1948.

WITNESS my hand and official seal, the _____ day of _____ 1949.

(SEAL) _____ County Auditor.

Office of County Treasurer, Cass County, Minnesota

To L. C. Peterson, County Auditor:

Sir:—I herewith return to you the Tax List for the Town of Shingabeu in said County for the year 1948, heretofore received from you. I certify that I have compared the same with the duplicate receipts in your office, and have written opposite the amount of each tax so received the words "First Quarter Paid", "Second Quarter Paid", "Third Quarter Paid" or "Paid in full" as the case may be, and the number of my receipt given in discharge of said tax, and each tract or lot of real property against which the taxes remain unpaid is delinquent for said year.

Yours respectfully,

County Treasurer.

Auditor's Office, Cass County, Minnesota

I hereby certify that on the first Monday in January 1950, I received of _____ County Treasurer, the Tax List of the _____ of _____ in said County for the year 1948; that I have compared the said list with the Statements received for by said Treasurer, which are on file in my office, and that each tract or lot of real property therein against which the taxes, or any part thereof, remains unpaid are delinquent for said year.

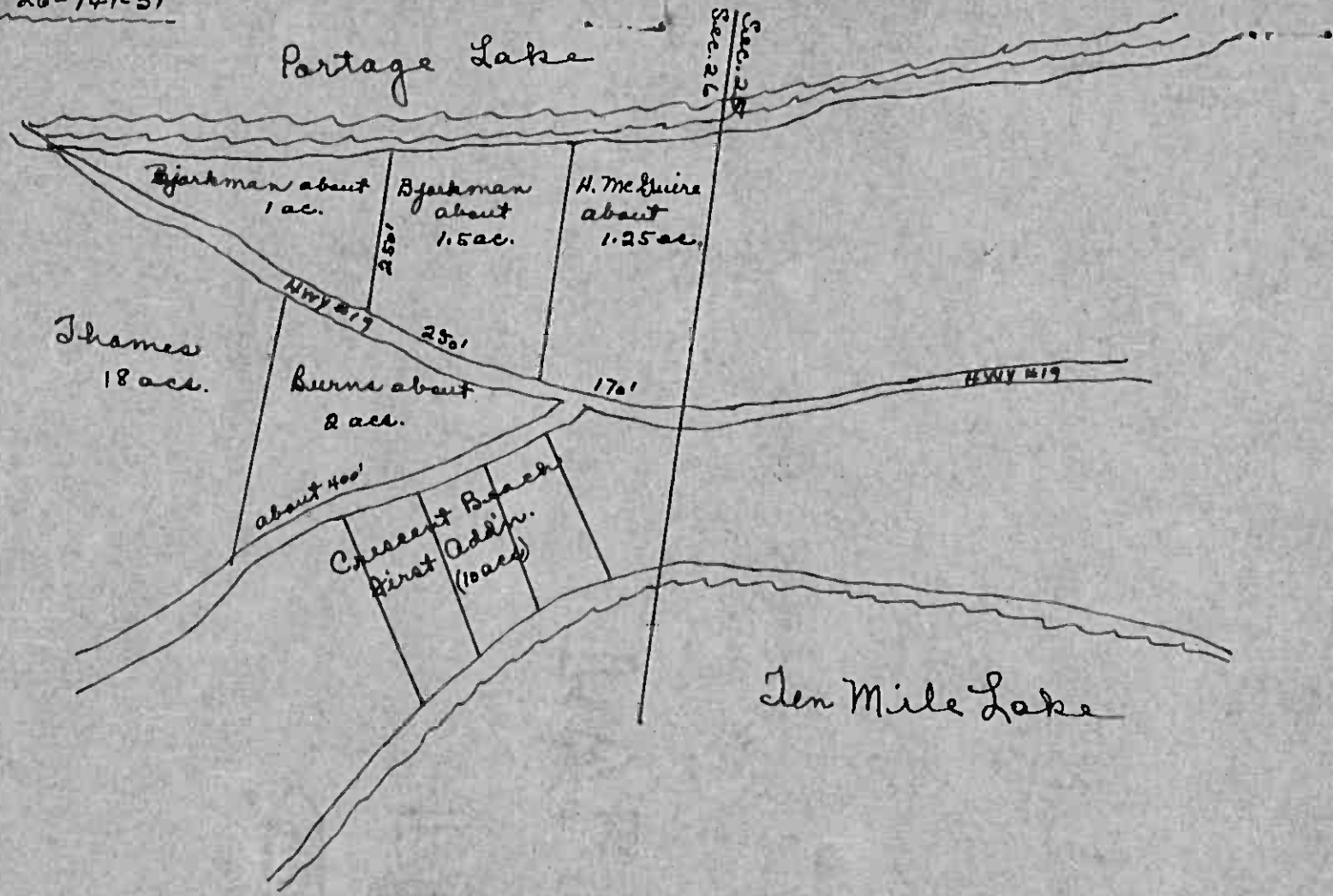
(SEAL) _____ County Auditor.

January 2, 1949

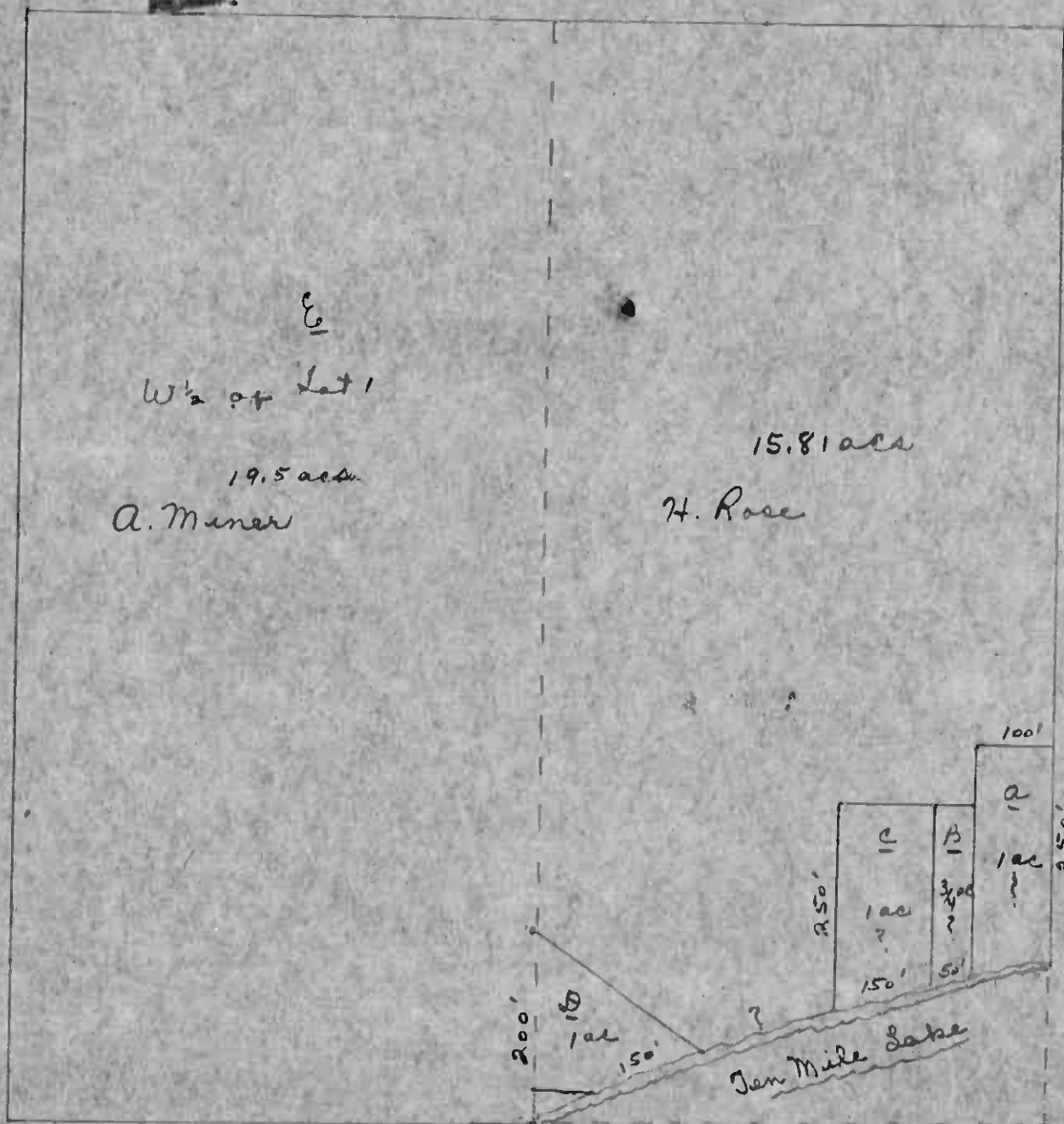
FUNDS	MARCH SETTLEMENT 1949	JUNE SETTLEMENT 1949	NOV. SETTLEMENT 1949	Amount Collected from Nov. 19... to First Monday in Jan. 19...	REDUCTIONS	Total Reductions and Collected	BALANCE UNCOLLECTED	ADDITIONS	Total Uncollected to First Monday in January, 19...
State - Non-Homestead,	86 73	137 12	60 93						
State - Homestead,	66 85	149 98	63 10						
County Revenue,	537 53	1206 04	507 39						
County Road and Bridge,	165 37	371 09	156 12						
County Welfare,	114 10	249 70	105 65						
County Bond and Interest,	181 47	407 17	171 30						
<i>Shy</i>	149 31	335 01	140 94						
Town Revenue,	45 94	103 08	43 37						
Town Road and Bridge,	275 65	618 48	260 20						
Town Drag,	22 97	51 54	21 68						
Town State Loan, <i>Five</i>	57 43	128 85	54 21						
<i>Il</i>	57 43	128 85	54 21						
<i>Cam.</i>	22 97	51 54	21 68						
School Local 1 Mill,	22 97	51 54	21 68						
School Special,	670 47	1104 54	536 89						
School State Loan-									
Deficiency	271 06	608 17	255 92						
Tuition									
Transportation	4135	42 77	39 03						
<i>6.0</i>	183 97	412 32	173 47						
	3973 39	8437 79	3633 77						

	SCHOOL DISTRICT NO.	LOCAL 1 MILL	SPECIAL	STATE LOAN	<i>6.0</i>	<i>Deficit</i>	<i>Transp</i>	TOTALS
MARCH SETTLEMENT	School District No. <i>U-5</i> <i>7A-5</i>	<i>124</i> <i>21 73</i>	<i>1867</i> <i>651 80</i>		<i>296</i> <i>173 81</i>	<i>1467</i> <i>256 37</i>	<i>224</i> <i>37 16</i>	<i>4680</i> <i>1142 82</i>
	Totals	<i>22 97</i>	<i>670 47</i>		<i>183 77</i>	<i>271 06</i>	<i>41 35</i>	<i>1187 62</i>
JUNE SETTLEMENT	School District No. <i>A-5</i> <i>7A-5</i>	<i>2945</i> <i>22 29</i>	<i>441 69</i> <i>662 85</i>	<i>397 46</i>	<i>235 57</i> <i>176 75</i>	<i>347 46</i> <i>260 71</i>	<i>5300</i> <i>39 97</i>	<i>1207 17</i> <i>8162 17</i>
	Totals	<i>51 54</i>	<i>1104 54</i>		<i>412 32</i>	<i>608 17</i>	<i>92 77</i>	<i>2262 34</i>
NOVEMBER SETTLEMENT	School District No. <i>A-5</i> <i>7A-5</i>	<i>757</i> <i>141</i>	<i>113 56</i> <i>423 33</i>		<i>60 57</i> <i>112 92</i>	<i>59 34</i> <i>166 58</i>	<i>1362</i> <i>25 40</i>	<i>244 67</i> <i>782 32</i>
	Totals	<i>21 68</i>	<i>536 89</i>		<i>173 47</i>	<i>255 92</i>	<i>39 03</i>	<i>1026 99</i>
NOVEMBER to JANUARY	School District No.							
	Totals							
ADDITIONS	School District No.							
	Totals							
REDUCTIONS	School District No.							
	Totals							

Lot 3 - 26 - 141 - 31



This is according to information from
H. W. Jensen. Total acreage of lot 3, sec. 26, is 33.75 ac.



E
 W^{1/2} of Lot 1
 19.5 ac^{ts}
 A. Miner

15.81 ac^{ts}
 H. Rose

- A - J. Kolderie
- B - "
- C - Edmer Nordland
- D - Henry Rose
- E - Alpha H. Miner

Lot 1 - 34-141-31

Except for distances given
 this map is not exact as we
 don't know the distance of
 lake.

4/12/49

5 0 4 4 <
4 1 8
7 1 6
7 1 6
6 3 6
4 0 6
4 0 6
4 0 4
6 5 1 6
4 3 4
1 1 0 0
7 6 2

1 8 6 3 8 7

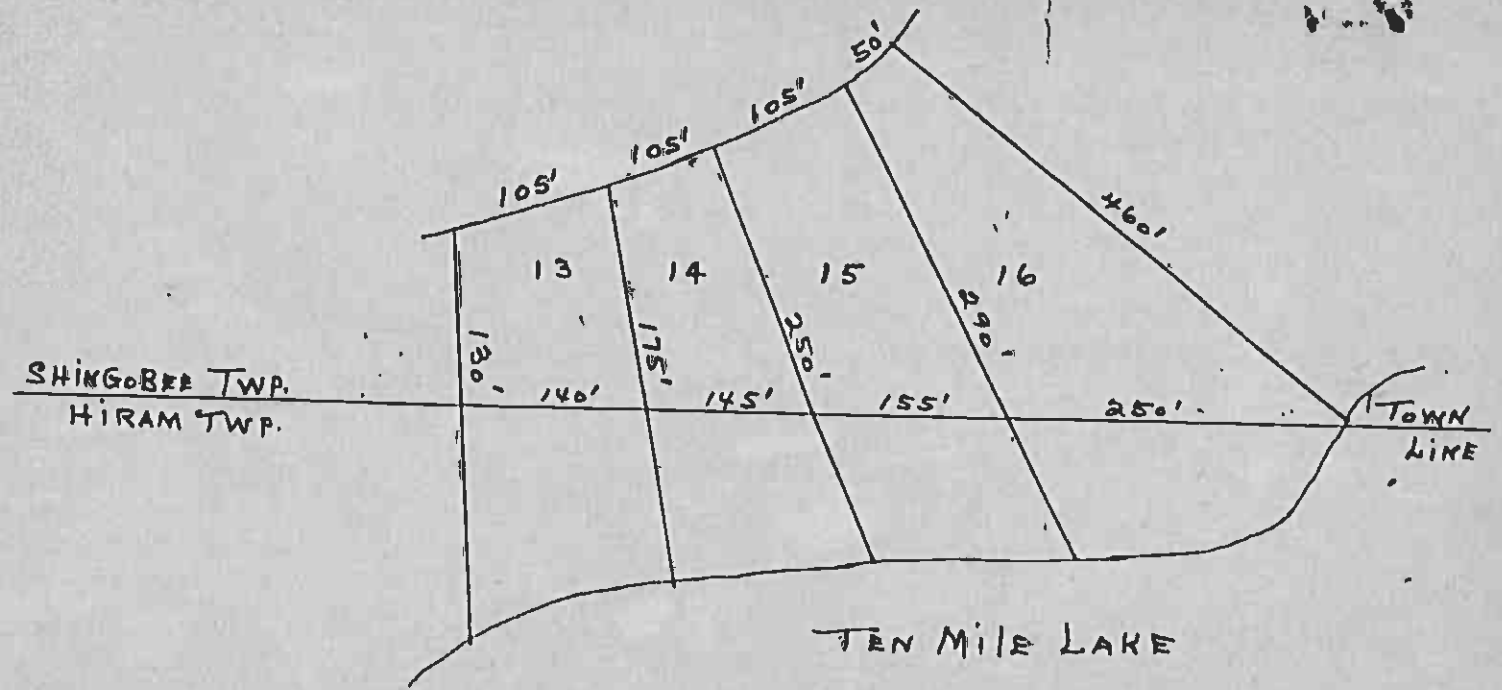
IN WHOSE NAME ASSESSED	TO WHOM TRANSFERRED	DESCRIPTION OF PROPERTY				TRUE AND FULL VALUATIONS										FINAL EQUALIZED VALUE	
		SUBDIVISION	Sec. of Lot	Town or Block	Number of Acres of Land	LAND Exclusive of Structures and Improvements	BUILDINGS and Other Structures	MACHINERY Permanently Attached to Real Estate	TOTAL True and Full Value	RURAL		ALL OTHER		MACHINERY Permanently Attached to Real Estate	TOTAL ASSESSED VALUE		Total Assessed Value as Equalized by the Board of Review
										Up to \$4,000 20%	Over \$4,000 and Non-Homestead 33 1/3%	Up to \$4,000 25%	Over \$4,000 and Non-Homestead 40%				
Harry Paddock		E 1/2 of NE 1/4 of NE 1/4 less part S. of Hwy.	28	142	31	7	65	5	40	90	175		265	53		53	
J. C. Jewell		NW 1/4 of NE 1/4 less part S. of Hwy.				25	38			180			180	36		36	
Daniel + Cecelia Wallace		1/2 ac of NW 1/4 of NE 1/4 + SW 1/4 of NE 1/4 less 1/2 ac				28	61			250	260	75	1085	202		227	
Louise + Ida Nordtme		Lot 1 less Ry. SW 1/4 of NE 1/4				24	40			270	220	39	529	92		111	
John Hendrickson		W 1/2 of NE 1/4 of NE 1/4 less Hwy. less part N. of Hwy.				14	35			69	51		120	40		40	
J. C. Jewell		1/2 ac of NE 1/4 of NW 1/4				50				9			9	3		3	
U. S. of America		NW 1/4 of NW 1/4															
Harry Paddock		SW 1/4 of NW 1/4 less part S. of Hwy. less part E. of Hwy.	20	72		22	72			135			135	27		27	
Curtis + Mildred Washell		SE 1/4 of NW 1/4 S. of Hwy. less 9 ac.				9	58			80	300		380	76		76	
Harry Paddock		SE 1/4 of NW 1/4 less 1 ac				7	75			90	460		550	110		110	
U. S. of America		NE 1/4 of SW 1/4															
Harold E. + Mary E. Cahill		NW 1/4 of SW 1/4 - S. of Hwy. less 1/2 ac	23	71		7	71			270	200		470	94		94	
August + Louise Olson		SW 1/4 of SW 1/4				26	82			234	30		264	88		88	
"		SE 1/4 of SW 1/4															
Harold E. + Mary E. Cahill		That part of SW 1/4 of NW 1/4 S. of Hwy.				1	50			15			15	3		3	
Marvin + Emma Van Vickle		4 1/2' NW 1/4 of NW 1/4 less 1/2' in SW 1/4 of NW 1/4				4	5			45	150		195	39		39	
"		NW 1/4 of SE 1/4															
Clarence L. + Ora V. Bridgeman		Part of E 1/2 of NE 1/4 of NE 1/4 S. of Hwy.				7	70			110	400		510	102		102	
Henry H. + Dorothy Louise Hagen		That part of W 1/2 of NE 1/4 of NE 1/4 N. of Hwy.				7				100	600	75	775	140		165	
Harry Paddock		That part of NW 1/4 of SW 1/4 N. of Hwy.				1	50			15			15	3		3	
						20	317			1962	3346	189	5497	983	131	1177	

Continued on next page.

SOLD FOR TAXES	VALUATIONS BY SCHOOL DISTRICTS AS EQUALIZED BY DEPARTMENT OF TAXATION						Tax including State Homestead	State Tax on Non-Homestead	SPECIAL TAXES	TOTAL TAXES	PAID	WHEN PAID	Number of Receipt	March Settlement 1949	June Settlement 1949	November Settlement 1949	Penalty	Collections to First Monday in January 1950	Penalty	Delinquent on First Monday in January 1950	Total Delinquent Tax and Penalty	REMARKS
	District No.	District No.	District No.	District No.	District No.	District No.																
	Rate	Rate	Rate	Rate	Rate	Rate																
1																						
2																						
3																						
4																						
5																						
6																						
7																						
8																						
9	SOLD FOR TAXES																					
10																						
11																						
12																						
13																						
14																						
15	SOLD FOR TAXES																					
16																						
17																						
18																						
19																						
20																						

142-31, Lot 5, Cass, Shingobee Island, and Part of E 1/2 of SE 1/4 of NW 1/4 of Section 36, Township 137 N., Range 10 W., 142-31

1000



SHINGOBER TWP.
HIRAM TWP.

TOWN
LINE

TEN MILE LAKE

Lots 13-14-15-16 CHARITON BEACH

