

ASSESSMENT & TAX LIST  
Shingobee  
1945











List of Lands in the \_\_\_\_\_ of \_\_\_\_\_, County of \_\_\_\_\_, Minn., for the Year 19\_\_\_\_, Which have Become Homesteads or Ceased to be Homesteads  
 SINCE THE LAST REAL ESTATE ASSESSMENT DATE

Form 214 Miller-Davis Company, Minneapolis, State Form No. 67

LANDS BECOMING HOMESTEADS						LANDS CEASING TO BE HOMESTEADS							
NAME OF OWNER	School District	DESCRIPTION OF PROPERTY	Sec. or Lot	Town or Block	Range	Number of Acres of Land	NAME OF OWNER	School District	DESCRIPTION OF PROPERTY	Sec. or Lot	Town or Block	Range	Number of Acres of Land
W. Benghofer	5	1/4 E 1/4 NW 1/4	8	181	31	40							
W. Long	5	NE 1/4 SW 1/4	7	142	31	34.66							
John and Elda Holman	5	2 1/2 S 1/2 RR 7 1/2 S 1/2 RR	8	142	31	2.50 7.5							
Clarence Akernoot	5	Lot 4-5-6-7-8	(Lot 2)	86	142	31							
N.W. Hancock	6	17.77 1/2 ft <sup>2</sup> NE 1/4 1/2	8	142	31	17.77 1.60							
Mary A. Roy	5	Lot 1	(Lot 1)	16	142	31							
J. M. Murphy	5	Lot 2, 3, 4, 5, 6, 7, 8, 9, 10, 11, 12, 13, 14, 15, 16, 17, 18, 19, 20	1	141	31	21.15							
Russell A. Roy	5	Lot 2, 3, 4, 5, 6, 7, 8, 9, 10, 11, 12, 13, 14, 15, 16, 17, 18, 19, 20	2	141	31	14.40							
John M. Swanson	5	NW 1/4 NE 1/4 SW 1/4 SE 1/4	31	141	31	27							
Jedell Kullberg	5	S 400 ft line	2	141	31	12							
Clara Peterson	5	300 x 250 ft. NE corner	2	142	31	25							
John Signiller	5	Quarter flat	7	142	31								
Charles Brand	5	Quarter flat	3	141	31								
Bessie Woodworth	5	NE 1/4 NW 1/4	8	141	31	40							
Wm. and Catherine Benghofer	5	SE 1/4 NW 1/4	7	141	31	40.75							
Bessie Woodworth	5	1/2 Acre SE 1/4 SE	12	141	31	2							



















COLLECTIONS OF TAXES OF 1945, Town of Shingobee, CASS COUNTY, MINNESOTA

FUNDS	MARCH SETTLEMENT 1945	JUNE SETTLEMENT 1945	NOV. SETTLEMENT 1945	Amount Collected from Nov. 15 to First Monday in Jan. 1946	REDUCTIONS	Total Reductions and Collected	BALANCE UNCOLLECTED	ADDITIONS	Total Uncollected to First Monday in January, 1946
State Revenue,									
State School,									
Teachers Insurance,									
State Debt—Non-Homestead,	6220	25787							
State Debt—Homestead,	1910	7656							
County Revenue,	26196	105018							
County Road and Bridge,	10405	41713							
County Welfare,	44558	178629							
County Bond and Interest,	21912	87842							
Town Revenue,									
Town Road and Bridge,	2448	9815							
Town Drag,	1224	4907							
Town State Loan,									
Fire	2448	9815							
Del.	2448	9815							
Gen.	1224	4907							
Bldg.	1224	4907							
School Local 1 Mill,	1224	4907							
School Special,	31923	89559							
School State Loan,									
Deficiency 1944	16404	65759							
C.O.	3672	14722							
	187681	711783							

	School District No.	LOCAL 1 MILL	SPECIAL	STATE LOAN	Deficiency 1944	C.O.	TOTALS
MARCH SETTLEMENT	5	1224	31923		16404	3672	53223
Totals	5	1224	31923		16404	3672	53223
JUNE SETTLEMENT	5	4907	89559		65759	14722	174947
Totals	5	4907	89559		65759	14722	174947
NOVEMBER SETTLEMENT							
Totals							
NOVEMBER to JANUARY							
Totals							
ADDITIONS							
Totals							
REDUCTIONS							
Totals							

Shingobee  
 Plat 7  
 Lot 5  
 Lot 7  
 Lot 5



Assessment Roll and Tax List of Unplatted Real Property in the Town of Shingabea

Cass County, Minnesota, for Taxes for the Year 1945.

141-31

Table with columns: IN WHOSE NAME ASSESSED, TO WHOM TRANSFERRED, DESCRIPTION OF PROPERTY, ASSESSOR'S VALUATION, EQUALIZED VALUES, VALUATIONS BY SCHOOL DISTRICTS AS EQUALIZED BY DEPARTMENT OF TAXATION, SPECIAL TAXES, TOTAL GENERAL TAX, PAID, WHEN PAID, Number of Receipt, March Settlement 1946, June Settlement 1946, November Settlement 1946, Collections to First Monday in January 1947, Delinquent on First Monday in January 1947, Total Delinquent Tax and Penalty, REMARKS.

Bal of Sec. 1 on next page

142-31

142-31

142-31

142-31

142-31

142-31

142-31

142-31

142-31

142-31

142-31











































Assessment Roll and Tax List of Unplatted Real Property in the Town of Shingobee, Minnesota

Cass County, Minnesota, for Taxes for the Year 1945.

141-31

Table with columns: IN WHOSE NAME ASSESSED, TO WHOM TRANSFERRED, DESCRIPTION OF PROPERTY, ASSESSOR'S VALUATION, EQUALIZED VALUES, VALUATIONS BY SCHOOL DISTRICTS AS EQUALIZED BY DEPARTMENT OF TAXATION, SPECIAL TAXES, TOTAL GENERAL TAX, PAID, WHEN PAID, Number of Receipt, March Settlement 1946, June Settlement 1946, Penalty, November Settlement 1946, Collections to First Monday in January 1947, Delinquent on First Monday in January 1947, Total Delinquent Tax and Penalty, REMARKS.

SOLD FOR TAXES

SOLD FOR TAXES

150 Beach

Ch

142-31

Shingobee

15 Plat

Sec 8 Lot 7

and Plat of Lot 5























Assessment Roll and Tax List of Unplatted Real Property in the Town of Shingabe

Cass County, Minnesota, for Taxes for the Year 1945.

Table with columns: IN WHOSE NAME ASSESSED, TO WHOM TRANSFERRED, DESCRIPTION OF PROPERTY, ASSESSOR'S VALUATION, EQUALIZED VALUES, VALUATIONS BY SCHOOL DISTRICTS AS EQUALIZED BY DEPARTMENT OF TAXATION, SPECIAL TAXES, PAID, WHEN PAID, Number of Receipt, March Settlement 1946, June Settlement 1946, Penalty, November Settlement 1946, Collections to First Monday in January 1947, Delinquent on First Monday in January 1947, Total Delinquent Tax and Penalty, REMARKS.

141-31

Miss. Beach

142-31

Ingobee

18 Plat & Lot 7 And. Plat of Lot 5



























Assessment Roll and Tax List of Unplatted Real Property in the Town of Shingabe

Cass County, Minnesota, for Taxes for the Year 1945.

Main table with columns: IN WHOSE NAME ASSESSED, TO WHOM TRANSFERRED, DESCRIPTION OF PROPERTY, ASSESSOR'S VALUATION, EQUALIZED VALUES, VALUATIONS BY SCHOOL DISTRICTS AS EQUALIZED BY DEPARTMENT OF TAXATION, SPECIAL TAXES, PAID, WHEN PAID, etc.

Mattie Krueger

Annie Marie Johnson + Caroline Lindstrom

Abate #372

Handwritten notes and calculations: 1408, 868, 848, 3822, 11010, 5712, 3463, 3463

Handwritten notes: 1424 PAID IN FULL FEB 1 1946, 2082 PAID IN FULL FEB 1 1946, 911 3506

Vertical text on the right edge: 12-31, 1945, Plat of Lot 7, Plat of Lot 5







Assessment Roll and Tax List of Unplatted Real Property in the Town of Shingobee

Cass County, Minnesota, for Taxes for the Year 1945.

Table with columns: IN WHOSE NAME ASSESSED, TO WHOM TRANSFERRED, DESCRIPTION OF PROPERTY, ASSESSOR'S VALUATION, EQUALIZED VALUES, VALUATIONS BY SCHOOL DISTRICTS AS EQUALIZED BY DEPARTMENT OF TAXATION, and various tax and payment columns.











Assessment Roll and Tax List of Unplatted Real Property in the Town of Shingobee, Cass County, Minnesota, for Taxes for the Year 1945.

Cass County, Minnesota, for Taxes for the Year 1945.

Table with columns: IN WHOSE NAME ASSESSED, TO WHOM TRANSFERRED, DESCRIPTION OF PROPERTY, ASSESSOR'S VALUATION, EQUALIZED VALUES, VALUATIONS BY SCHOOL DISTRICTS AS EQUALIZED BY DEPARTMENT OF TAXATION, SPECIAL TAXES, TOTAL GENERAL TAX, PAID, WHEN PAID, Number of Receipt, March Settlement 1946, June Settlement 1946, November Settlement 1946, Collections to First Monday in January 1947, Delinquent on First Monday in January 1947, Total Delinquent Tax and Penalty, REMARKS.

Ethel B. Dickerson et al

Louis Krueger

State of Minnesota

State of Minnesota

Edmund C. + Mathilda J. James

U. S. of America

U. S. of America

U. S. of America

U. S. of America

Ethel B. Burne

Ralph E. DeSury

Ralph E. DeSury + A.C. Kleinegger

Ethel B. Burne

Chg. 2732

SOLD FOR TAXES

SOLD FOR TAXES

SOLD FOR TAXES

PAID IN FULL JUN 5 1946

PAID IN FULL JUN 5 1946

2nd Half Paid OCT 6 - 1945

1st Half Paid MAY 31 1945

PAID IN FULL FEB 2 1946

PAID IN FULL FEB 19 1946

PAID IN FULL FEB 25 1946

PAID IN FULL APR 29 1946

PAID IN FULL FEB 19 1946

141-3, 141-31, 141-32, 141-33, 141-34, 141-35, 141-36, 141-37, 141-38, 141-39, 141-40, 141-41, 141-42, 141-43, 141-44, 141-45, 141-46, 141-47, 141-48, 141-49, 141-50, 141-51, 141-52, 141-53, 141-54, 141-55, 141-56, 141-57, 141-58, 141-59, 141-60, 141-61, 141-62, 141-63, 141-64, 141-65, 141-66, 141-67, 141-68, 141-69, 141-70, 141-71, 141-72, 141-73, 141-74, 141-75, 141-76, 141-77, 141-78, 141-79, 141-80, 141-81, 141-82, 141-83, 141-84, 141-85, 141-86, 141-87, 141-88, 141-89, 141-90, 141-91, 141-92, 141-93, 141-94, 141-95, 141-96, 141-97, 141-98, 141-99, 141-100







Assessment Roll and Tax List of Unplatted Real Property in the Town of Shingobee

Unplatted Real Estate Assessed at 33 1/2 Per Cent of True and Full Value; Attached Machinery at 33 1/2 Per Cent of True and Full Value, Homesteads, up to True and Full Value of \$1000, Assessable at 20 Per Cent, Class (B); Remainder at 33 1/2 Per Cent, Class 3.

Cass County, Minnesota, for Taxes for the Year 1945.

Table with columns: IN WHOSE NAME ASSESSED, TO WHOM TRANSFERRED, DESCRIPTION OF PROPERTY, ASSESSOR'S VALUATION, EQUALIZED VALUES, VALUATIONS BY SCHOOL DISTRICTS AS EQUALIZED BY DEPARTMENT OF TAXATION, SPECIAL TAXES, PAID, WHEN PAID, Number of Receipt, March Settlement 1946, June Settlement 1946, November Settlement 1946, Penalty, Collections to First Monday in January 1947, Delinquent on First Monday in January 1947, Total Delinquent Tax and Penalty, REMARKS.

Genevieve P. Michelke, Harotta M. Wells + Harvey Plymott

G.P. Michelke, L.M. Wells + H.E. + W. Plymott

Donald Clemons Eckman's Eliza Hannah Eckman 1/3 Int. + David J. Callison + Marrett Callison 2/3 Int.

SOLD FOR TAXES

SOLD FOR TAXES

PAID IN FULL APR 18 1945 4335

PAID IN FULL JAN - 2 1947

PAID IN FULL JAN - 2 1947

142-31

Shingobee

1st Plat

Sec 1 & Lot 7

and Plat of Lot 5







Assessment Roll and Tax List of Unplatted Real Property in the Town of Shingobee

Cass County, Minnesota, for Taxes for the Year 1945.

Table with columns: IN WHOSE NAME ASSESSED, TO WHOM TRANSFERRED, DESCRIPTION OF PROPERTY, ASSESSOR'S VALUATION, EQUALIZED VALUES, VALUATIONS BY SCHOOL DISTRICTS AS EQUALIZED BY DEPARTMENT OF TAXATION, TOTAL GENERAL TAX, SPECIAL TAXES, PAID, WHEN PAID, Number of Receipt, March Settlement 1946, June Settlement 1946, November Settlement 1946, Collections to First Monday in January 1947, Delinquent on First Monday in January 1947, Total Delinquent Tax and Penalty, REMARKS.

U. S. of America
Myrtle Loflam
Geo. Klein
Charles + Esther Michel
W. J. Weiss
Joe C. + Mike A. Poncelet, Jr.
Mike Poncelet, Jr.
U. S. of America
U. S. of America
U. S. of America
John H. Haugen
Geo. J. Klein
State of Minnesota George A. D. Wolff

1 NE 1/4 of NE 1/4 30 141 31 2755
2 NW 1/4 of NE 1/4 11 02
3 SW 1/4 of NE 1/4 37 04
4 SE 1/4 of NE 1/4 15 29
6 NE 1/4 of NW 1/4 51 91
7 NW 1/4 of NW 1/4 Lot 1 52 87
8 SW 1/4 of NW 1/4 " 2 39 65
9 SE 1/4 of NW 1/4 32 41
11 NE 1/4 of SW 1/4 31 70
12 NW 1/4 of SW 1/4 " 3 10
13 SW 1/4 of SW 1/4 " 4 6 80
14 SE 1/4 of SW 1/4 31 62
16 NE 1/4 of SE 1/4 9 24
17 NW 1/4 of SE 1/4 12 67
18 SW 1/4 of SE 1/4 30 2
19 SE 1/4 of SE 1/4 12 67
20 12 67

1 1014 48 1062 1/2 PAID IN FULL JUN 21 1946 7130 10 62 ✓
2 370 18 388 1/3 PAID IN FULL JUN 15 1946 7522 388 ✓
4 1358 66 1424 1/4 PAID IN FULL MAY 4 1945 5033 1424 ✓
5 1028 796 1028 ✓ PAID IN FULL MAR 17 1946 5134 1028 ✓
7 796 796 PAID IN FULL FEB 15 1946
8 796 796 PAID IN FULL FEB 15 1946
9 2058 2058 PAID IN FULL FEB 15 1946 1953 4130
10 480 480 PAID IN FULL FEB 15 1946
11 3722 3722 PAID IN FULL JUN 15 1946 7522 1278 ✓
17 962 962 PAID IN FULL JUN 15 1946
18 316 316 PAID IN FULL JUN 15 1946
20 12672 360 13032

141-31
142-31
Shingobee
Plat 7
Plat 5







Assessment Roll and Tax List of Unplatted Real Property in the Town of Shingobee

Cass County, Minnesota, for Taxes for the Year 1945.

Table with columns: IN WHOSE NAME ASSESSED, TO WHOM TRANSFERRED, DESCRIPTION OF PROPERTY, ASSESSOR'S VALUATION, EQUALIZED VALUES, VALUATIONS BY SCHOOL DISTRICTS AS EQUALIZED BY DEPARTMENT OF TAXATION, SPECIAL TAXES, TOTAL GENERAL TAX, PAID, WHEN PAID, Number of Receipt, March Settlement, June Settlement, November Settlement, Collections to First Monday in January 1947, Delinquent on First Monday in January 1947, Total Delinquent Tax and Penalty, REMARKS.

U. S. of America
G.P. Michelke
John E. Blomquist

1 NE 1/4 of NE 1/4
2 NW 1/4 of NE 1/4
3 SW 1/4 of NE 1/4
4 SE 1/4 of NE 1/4
5
6 NE 1/4 of NW 1/4
7 NW 1/4 of NW 1/4
8 SW 1/4 of NW 1/4
9 SE 1/4 of NW 1/4
10
11 NE 1/4 of SW 1/4
12 NW 1/4 of SW 1/4
13 SW 1/4 of SW 1/4
14 SE 1/4 of SW 1/4
15 S 1/2 of NW 1/4 of SE 1/4
16 NE 1/4 of SE 1/4
17 N 1/2 of NW 1/4 of SE 1/4
18 SW 1/4 of SE 1/4
19 SE 1/4 of SE 1/4 Lot 1
20

32 141 34
40
20
33 75
183 75

SOLD FOR TAXES
SOLD FOR TAXES
SOLD FOR TAXES

1
2 74 1014 48
3
4
5
6
7
8
9
10
11
12
13
14
15
16
17 37 508 24 532 17
18 55 754 754 18
19 37 508 508 19
20 92 111 2784 72 2886 203

142-31
Chapman Shingobee
1st Plat
SE 1/4 & Lot 7
and. Plat of Lot 5















Assessment Roll and Tax List of Unplatted Real Property in the Town of Shingobee

Cass County, Minnesota, for Taxes for the Year 1945

Table with columns: IN WHOSE NAME ASSESSED, TO WHOM TRANSFERRED, DESCRIPTION OF PROPERTY, ASSESSOR'S VALUATION, EQUALIZED VALUES, SOLID FOR TAXES, EVALUATIONS BY SCHOOL DISTRICTS AS LOCALIZED BY DEPARTMENT OF TAXATION, SPECIAL TAXES, TOTAL GENERAL TAX, PAID, WHEN PAID, Number of Receipt, March Settlement 1946, June Settlement 1946, Penalty, November Settlement 1946, Penalty, Collections to First Monday in January 1947, Delinquent on First Monday in January 1947, Total Delinquent Tax and Penalty, REMARKS.

Land transferred to L. L. Linn + Helen B. Linn + ...  
R. E. Deamery + Adolph Kleinegger  
Theodore + Helen G. Kaldere  
Park Region Timber Co.  
George Ewen  
Everett L. Batcheller + Henry Rose  
Ada L. Macklin

Lloyd + Mildred Sundin

1/2 int. pd. by E. L. Batcheller

112-31

15 Plat Sec 4 Lot 7 and Plat of Lot 5



Assessment Roll and Tax List of Unplatted Real Property in the Town of Shingobee

Table with columns: IN WHOSE NAME ASSESSED, TO WHOM TRANSFERRED, DESCRIPTION OF PROPERTY, ASSESSOR'S VALUATION, EQUALIZED VALUES, and SOLD FOR TAXES. Includes handwritten entries for L.A. Bassett, Emily Johnson + Henry Bosworth, Clarence D. Seave, Walter E. Zimbereck, Geo. B. Leonard, and Herman Schalberg.

Cass County, Minnesota, for Taxes for the Year 1945.

Table with columns: VALUATIONS BY SCHOOL DISTRICTS AS EQUALIZED BY DEPARTMENT OF TAXATION, SPECIAL TAXES, TOTAL GENERAL TAX, PAID, WHEN PAID, and various settlement/penalty columns. Includes handwritten tax amounts and payment dates.

Shingobee 142-31 1st Plat & Lot 7 And. Plat of Lot 5







Assessment Roll and Tax List of Unplatted Real Property in the Town of Shingabea

Cass County, Minnesota, for Taxes for the Year 1945.

Table with columns: WHOSE NAME ASSESSED, TO WHOM TRANSFERRED, DESCRIPTION OF PROPERTY, ASSESSOR'S VALUATION, EQUALIZED VALUES, VALUATIONS BY SCHOOL DISTRICTS, SPECIAL TAXES, PAID, WHEN PAID, Number of Receipt, March Settlement 1946, June Settlement 1946, November Settlement 1946, Penalty, Collections to First Monday in January 1947, Delinquent on First Monday in January 1947, Total Delinquent Tax and Penalty, REMARKS.

U. S. of America  
Raymond E. & Carl W. Stanley

State of Minnesota - Dept. Nat. Cr.

U. S. of America

U. S. of America

Plat # 2615

PAID IN FULL MAY 31 1945 6561

5021

35 480 22

502

141-31

142-31

Shingabea

Plat 5

Lot 7







Assessment Roll and Tax List of Unplatted Real Property in the Town of Shingobee

Cass County, Minnesota, for Taxes for the Year 1945.

Table with columns: IN WHOSE NAME ASSESSED, TO WHOM TRANSFERRED, DESCRIPTION OF PROPERTY, ASSESSOR'S VALUATION, EQUALIZED VALUES, VALUATIONS BY SCHOOL DISTRICTS AS EQUALIZED BY DEPARTMENT OF TAXATION, SPECIAL TAXES, TOTAL GENERAL TAX, PAID, WHEN PAID, Number of Receipt, March Settlement 1946, June Settlement 1946, Penalty, November Settlement 1946, Penalty, Collections to First Monday in January 1947, Penalty, Delinquent on First Monday in January 1947, Total Delinquent Tax and Penalty, REMARKS.

141-51  
142-51

Shingobee  
Plat of Lot 7  
Plat of Lot 5



Assessment Roll and Tax List of Unplatted Real Property in the Town of Shingabe

Cass County, Minnesota, for Taxes for the Year 1945.

Table with columns: IN WHOSE NAME ASSESSED, TO WHOM TRANSFERRED, DESCRIPTION OF PROPERTY, ASSESSOR'S VALUATION, EQUALIZED VALUES, VALUATIONS BY SCHOOL DISTRICTS AS EQUALIZED BY DEPARTMENT OF TAXATION, SPECIAL TAXES, TOTAL TAXES, PAID, WHEN PAID, Number of Receipt, March Settlement 1946, June Settlement 1946, November Settlement 1946, Collection to First Monday in January 1917, Delinquent on First Monday in January 1917, Total Delinquent Tax and Penalty, REMARKS.

141-31  
142-31

Shingabe  
Shingabe  
Plat & Lot 7  
Plat of Lot 5



Assessment Roll and Tax List of Unplatted Real Property in the Town of Shingobee, Cass County, Minnesota, for Taxes for the Year 1945.

Cass County, Minnesota, for Taxes for the Year 1945.

Table with columns: IN WHOSE NAME ASSESSED, TO WHOM TRANSFERRED, DESCRIPTION OF PROPERTY, ASSESSOR'S VALUATION, EQUALIZED VALUES, VALUATIONS BY SCHOOL DISTRICTS AS EQUALIZED BY DEPARTMENT OF TAXATION, SPECIAL TAXES, TOTAL GENERAL TAX, PAID, WHEN PAID, Number of Receipt, March Settlement 1946, June Settlement 1946, Penalty, November Settlement 1946, Penalty, Collections to First Monday in January 1947, Penalty, Delinquent on First Monday in January 1947, Total Delinquent Tax and Penalty, REMARKS.

141-31  
142-31

Beach

Chapman Shingobee

Plat of Lot 7  
And, Plat of Lot 5



Assessment Roll and Tax List of Unplatted Real Property in the Town of Shingobee

Cass County, Minnesota, for Taxes for the Year 1945.

Table with columns: IN WHOSE NAME ASSESSED, TO WHOM TRANSFERRED, DESCRIPTION OF PROPERTY, ASSESSOR'S VALUATION, EQUALIZED VALUES, VALUATIONS BY SCHOOL DISTRICTS AS EQUALIZED BY DEPARTMENT OF TAXATION, SPECIAL TAXES, TOTAL GENERAL TAX, PAID, WHEN PAID, Number of Receipt, March Settlement 1946, June Settlement 1946, November Settlement 1946, Collections to First Monday in January 1947, Delinquent on First Monday in January 1947, Total Delinquent Tax and Penalty, REMARKS.

142-51

41-31

Beach

Shingobee

1st Plat of Lot 7 and Plat of Lot 5

(Bal of Sec-8 on next page)

Lot 1, 2, 3 & 6 in Red on Resurvey map filed in Reg of Dist. office.

Lot 4 in Red on Resurvey map in Reg of Dist. office

Lot 5 in Red on Resurvey map in Reg of Dist. office







Assessment Roll and Tax List of Unplatted Real Property in the Town of Schingobee, Cass County, Minnesota, for Taxes for the Year 1945.

Cass County, Minnesota, for Taxes for the Year 1945.

Table with columns: IN WHOSE NAME ASSESSED, TO WHOM TRANSFERRED, DESCRIPTION OF PROPERTY, ASSESSOR'S VALUATION, EQUALIZED VALUES, VALUATIONS BY SCHOOL DISTRICTS AS EQUALIZED BY DEPARTMENT OF TAXATION, SPECIAL TAXES, TOTAL GENERAL TAX, PAID, WHEN PAID, Number of Receipt, March Settlement 1946, June Settlement 1946, November Settlement 1946, Collections to First Monday in January 1947, Delinquent on First Monday in January 1947, Total Delinquent Tax and Penalty, REMARKS.

Sverre Osen, Frank Rudna, LeRoy W. Mack + Carl G. Miller, G.E. Kautz

Elsie Rapp's int, Grace A. Sedler's int

Frank Rudna, LeRoy W. Mack, Carl G. Miller, G.E. Kautz

Elsie Rapp's int + Grace A. Sedler's int, Ethel L. Peterson

141-31, 142-31, Schingobee, Plat 6 Lot 7, Plat of Lot 5



Assessment Roll and Tax List of Unplatted Real Property in the Town of Shingobee

Table with columns: IN WHOSE NAME ASSESSED, TO WHOM TRANSFERRED, DESCRIPTION OF PROPERTY, ASSESSOR'S VALUATION, EQUALIZED VALUES, SOLD FOR TAXES. Includes entries for Nathaniel C. + Bertha Bennett, Leonard Peterson, Ethel L. Peterson, Farmers St. Bk., Walker, U. S. of America, and Chas. Markenberg.

Cass County, Minnesota, for Taxes for the Year 1945.

Table with columns: VALUATIONS BY SCHOOL DISTRICTS AS EQUALIZED BY DEPARTMENT OF TAXATION, Rate and Tax on Homestead Exemption, State Tax on Non-Homestead, TOTAL GENERAL TAX, SPECIAL TAXES, PAID, WHEN PAID, Number of Receipt, March Settlement 1946, June Settlement 1946, Penalty, November Settlement 1946, Penalty, Collections to First Monday in January 1947, Penalty, Delinquent on First Monday in January 1947, Total Delinquent Tax and Penalty, REMARKS. Includes handwritten entries for 'PAID IN FULL' with dates and amounts.







Assessment Roll and Tax List of Unplatted Real Property in the Town of Shingobee

Table with columns: IN WHOSE NAME ASSESSED, TO WHOM TRANSFERRED, DESCRIPTION OF PROPERTY, ASSESSOR'S VALUATION, EQUALIZED VALUES, VALUATIONS BY SCHOOL DISTRICTS AS EQUALIZED BY DEPARTMENT OF TAXATION, Rate and Tax Less Homestead Exemption, State Tax on Non-Homestead, TOTAL GENERAL TAX, SPECIAL TAXES, PAID, WHEN PAID, Number of Receipts, March Settlement 1946, June Settlement 1946, Penalty, November Settlement 1946, Penalty, Collections to First Monday in January 1947, Penalty, Delinquent on First Monday in January 1947, Total Delinquent Tax and Penalty, REMARKS.

142-31

Shingobee Plat 7 Aud. Plat of Lot 5



Assessment Roll and Tax List of Unplatted Real Property in the Town of Shingobee, Cass County, Minnesota, for Taxes for the Year 1945.

Table with columns: IN WHOSE NAME ASSESSED, TO WHOM TRANSFERRED, DESCRIPTION OF PROPERTY, ASSESSOR'S VALUATION, EQUALIZED VALUES, VALUATIONS BY SCHOOL DISTRICTS AS EQUALIZED BY DEPARTMENT OF TAXATION, SOLID FOR TAXES, SPECIAL TAXES, TOTAL GENERAL TAX, TOTAL TAXES, PAID, WHEN PAID, Number of Receipt, March Settlement 1946, June Settlement 1946, Penalty, November Settlement 1946, Penalty, Collections to First Monday in January 1947, Penalty, Delinquent on First Monday in January 1947, Total Delinquent Tax and Penalty, REMARKS.

142-31

141-31

Shingobee

SE 1/4 Lot 7

Plat of Lot 5







Assessment Roll and Tax List of Unplatted Real Property in the Town of Shingobee

Cass County, Minnesota, for Taxes for the Year 1945.

Table with columns: IN WHOSE NAME ASSESSED, TO WHOM TRANSFERRED, DESCRIPTION OF PROPERTY, ASSESSOR'S VALUATION, EQUALIZED VALUES, VALUATIONS BY SCHOOL DISTRICTS AS EQUALIZED BY DEPARTMENT OF TAXATION, SOLID FOR TAXES, SPECIAL TAXES, TOTAL GENERAL TAX, PAID, WHEN PAID, Number of Receipt, March Settlement 1946, June Settlement 1946, November Settlement 1946, Collections to First Monday in January 1947, Delinquent on First Monday in January 1947, Total Delinquent Tax and Penalty, REMARKS.

Loretta Hudson Pehr

1 NE 1/4 of NE 1/4 19 142 31 40 5
2 NW 1/4 of NE 1/4 40
3 SW 1/4 of NE 1/4 40
4 SE 1/4 of NE 1/4 40

U. S. of America 6 NE 1/4 of NW 1/4
State of Minnesota 7 NW 1/4 of NW 1/4 lot 1
U. S. of America 8 SW 1/4 of NW 1/4 2
U. S. of America 9 SE 1/4 of NW 1/4

U. S. of America 11 NE 1/4 of SW 1/4
U. S. of America 12 NW 1/4 of SW 1/4 3
U. S. of America 13 SW 1/4 of SW 1/4 4
U. S. of America 14 SE 1/4 of SW 1/4

U. S. of America 16 NE 1/4 of SE 1/4
U. S. of America 17 NW 1/4 of SE 1/4
U. S. of America 18 SW 1/4 of SE 1/4
U. S. of America 19 SE 1/4 of SE 1/4

1100

296 4056 192

4248

PAID IN FULL JUN 15 1946
PAID IN FULL JUN 15 1946
PAID IN FULL JUN 15 1946
PAID IN FULL JUN 15 1946

7524

4248 v

141-31

142-31

Shingobee

Plat

Lot 7 and Plat of Lot 5







Assessment Roll and Tax List of Unplatted Real Property in the Town of Shingobee, Cass County, Minnesota, for Taxes for the Year 1945.

Cass County, Minnesota, for Taxes for the Year 1945.

Table with columns: IN WHOSE NAME ASSESSED, TO WHOM TRANSFERRED, DESCRIPTION OF PROPERTY, ASSESSOR'S VALUATION, EQUALIZED VALUES, VALUATIONS BY SCHOOL DISTRICTS AS FORMALIZED BY DEPARTMENT OF TAXATION, Rate and Tax Less Homestead Exemption, State Tax on Non-Homestead, TOTAL GENERAL TAX, SPECIAL TAXES, TOTAL TAXES, PAID, WHEN PAID, Number of Receipt, March Settlement 1946, June Settlement 1946, Penalty, November Settlement 1946, Penalty, Collections to First Monday in January 1947, Penalty, Delinquent on First Monday in January 1947, Total Delinquent Tax and Penalty, REMARKS.







Assessment Roll and Tax List of Unplatted Real Property in the Town of Shingobee

Cass County, Minnesota, for Taxes for the Year 1945.

Table with columns: IN WHOSE NAME ASSESSED, TO WHOM TRANSFERRED, DESCRIPTION OF PROPERTY, ASSESSOR'S VALUATION, EQUALIZED VALUES, VALUATIONS BY SCHOOL DISTRICTS AS EQUALIZED BY DEPARTMENT OF TAXATION, SPECIAL TAXES, TOTAL GENERAL TAX, PAID, WHEN PAID, Number of Receipt, March Settlement 1946, June Settlement 1946, November Settlement 1946, Collections to First Monday in January 1947, Delinquent on First Monday in January 1947, Total Delinquent Tax and Penalty, REMARKS.



Assessment Roll and Tax List of Unplatted Real Property in the Town of Shingobee

Table with columns: IN WHOSE NAME ASSESSED, TO WHOM TRANSFERRED, DESCRIPTION OF PROPERTY, ASSESSOR'S VALUATION, EQUALIZED VALUES, SOLD FOR TAXES. Includes handwritten entries for Edward Howard Minsel, Arthur A. Larson, Roscoe Craff, E.L. Rogers, Alfred N. + Edna N. Oberley, C.R. Hewitt, Claude B. + Lillian Starr, Hays C. + J.E. Andrus, Jr., Clyde M. + Pearl E. Couvell, Clarence Heeter, Emil Sorenson, School District #5, Mattie Krueger Roy + Nina B. Krueger, J. F. Lillian + Martin J. Reed.

Cass County, Minnesota, for Taxes for the Year 1945.

Table with columns: VALUATIONS BY SCHOOL DISTRICTS AS EQUALIZED BY DEPARTMENT OF TAXATION, Rate and Tax Less Homestead Exemption, State Tax on Non-Homestead, TOTAL GENERAL TAX, SPECIAL TAXES, TOTAL TAXES, PAID, WHEN PAID, Number of Receipt, March Settlement 1946, June Settlement 1946, Penalty, November Settlement 1946, Penalty, Collections to First Monday in January 1947, Penalty, Delinquent on First Monday in January 1947, Total Delinquent Tax and Penalty, REMARKS. Includes handwritten entries for H 20, H 45, H 54, 57, H 23, H 18, H 106, 9, 164, 277, 624, 91, H 44, H 1, H 317, 1227, 1533.











Assessment Roll and Tax List of Unplatted Real Property in the Town of Shingobee, Cass County, Minnesota, for Taxes for the Year 1945.

Table with columns: IN WHOSE NAME ASSESSED, TO WHOM TRANSFERRED, DESCRIPTION OF PROPERTY, ASSESSOR'S VALUATION, EQUALIZED VALUES, VALUATIONS BY SCHOOL DISTRICTS AS EQUALIZED BY DEPARTMENT OF TAXATION, SPECIAL TAXES, TOTAL TAXES, PAID, WHEN PAID, Number of Receipts, March Settlement 1946, June Settlement 1946, November Settlement 1946, Collections to First Monday in January 1917, Delinquent on First Monday in January 1917, Total Delinquent Tax and Penalty, REMARKS.



Assessment Roll and Tax List of Unplatted Real Property in the Town of Shingobee

Cass County, Minnesota, for Taxes for the Year 1945.

Table with columns: IN WHOSE NAME ASSESSED, TO WHOM TRANSFERRED, DESCRIPTION OF PROPERTY, ASSESSOR'S VALUATION, EQUALIZED VALUES, VALUATIONS BY SCHOOL DISTRICTS AS EQUALIZED BY DEPARTMENT OF TAXATION, SOLID FOR TAXES, SPECIAL TAXES, TOTAL GENERAL TAX, PAID, WHEN PAID, Number of Receipt, March Settlement 1946, June Settlement 1946, Penalty, November Settlement 1946, Penalty, Collections to First Monday in January 1947, Delinquent on First Monday in January 1947, Total Delinquent Tax and Penalty, REMARKS.

Bal. of Sec. 26 on next page

141-31, 142-31, 143-31, 144-31, 145-31, 146-31, 147-31, 148-31, 149-31, 150-31, 151-31, 152-31, 153-31, 154-31, 155-31, 156-31, 157-31, 158-31, 159-31, 160-31, 161-31, 162-31, 163-31, 164-31, 165-31, 166-31, 167-31, 168-31, 169-31, 170-31, 171-31, 172-31, 173-31, 174-31, 175-31, 176-31, 177-31, 178-31, 179-31, 180-31, 181-31, 182-31, 183-31, 184-31, 185-31, 186-31, 187-31, 188-31, 189-31, 190-31, 191-31, 192-31, 193-31, 194-31, 195-31, 196-31, 197-31, 198-31, 199-31, 200-31



Assessment Roll and Tax List of Unplatted Real Property in the Town of Shingobee

Cass County, Minnesota, for Taxes for the Year 1945.

Form 4-00

Table with columns: IN WHOSE NAME ASSESSED, TO WHOM TRANSFERRED, DESCRIPTION OF PROPERTY, ASSESSOR'S VALUATION, EQUALIZED VALUES, VALUATIONS BY SCHOOL DISTRICTS AS EQUALIZED BY DEPARTMENT OF TAXATION, SPECIAL TAXES, TOTAL TAXES, PAID, WHEN PAID, Number of Receipt, March Settlement 1946, June Settlement 1946, November Settlement 1946, Collections to First Monday in January 1947, Delinquent on First Monday in January 1947, Total Delinquent Tax and Penalty, REMARKS.

A. N. Meland
L. J. Savard
Silver
Dotted
1 NE 1/4 of NE 1/4 of Lot 1 lying 71 of NE 1/4 of NE 1/4 of Section 26 142 31 50
2 2.20 acs of Lot 2 NW 1/4 of NE 1/4 220
3 2.80 acs of Lot 1 SW 1/4 of NE 1/4 280
4 SE 1/4 of NE 1/4
5
6 NE 1/4 of NW 1/4
7 NW 1/4 of NW 1/4
8 SW 1/4 of NW 1/4
9 SE 1/4 of NW 1/4
10
11 NE 1/4 of SW 1/4
12 NW 1/4 of SW 1/4
13 SW 1/4 of SW 1/4
14 SE 1/4 of SW 1/4
15
16 NE 1/4 of SE 1/4
17 NW 1/4 of SE 1/4
18 SW 1/4 of SE 1/4
19 SE 1/4 of SE 1/4
20

1 9 124 06 130 1 PAID IN FULL FEB - 6 1946 498 130
2 19 260 12 272 2 PAID IN FULL MAY 13 1946 489 272
3 19 260 12 272 3 PAID IN FULL MAY 13 1946 489 272
4
5
6
7
8
9
10
11
12
13
14
15
16
17
18
19
20 47 644 30 674

142-31

Shingobee Plat & Lot 7 Aud. Plat of Lot 5



Assessment Roll and Tax List of Unplatted Real Property in the Town of Shingobee, Cass County, Minnesota, for Taxes for the Year 1945.

Table with columns: IN WHOSE NAME ASSESSED, TO WHOM TRANSFERRED, DESCRIPTION OF PROPERTY, ASSESSOR'S VALUATION, EQUALIZED VALUES, VALUATIONS BY SCHOOL DISTRICTS AS EQUALIZED BY DEPARTMENT OF TAXATION, Rate and Tax Less Homestead Exemption, State Tax on Non-Homestead, TOTAL GENERAL TAX, SPECIAL TAXES, TOTAL TAXES, PAID, WHEN PAID, Number of Receipt, March Settlement 1946, June Settlement 1946, Penalty, November Settlement 1946, Penalty, Collections to First Monday in January 1947, Penalty, Delinquent on First Monday in January 1947, Total Delinquent Tax and Penalty, REMARKS.

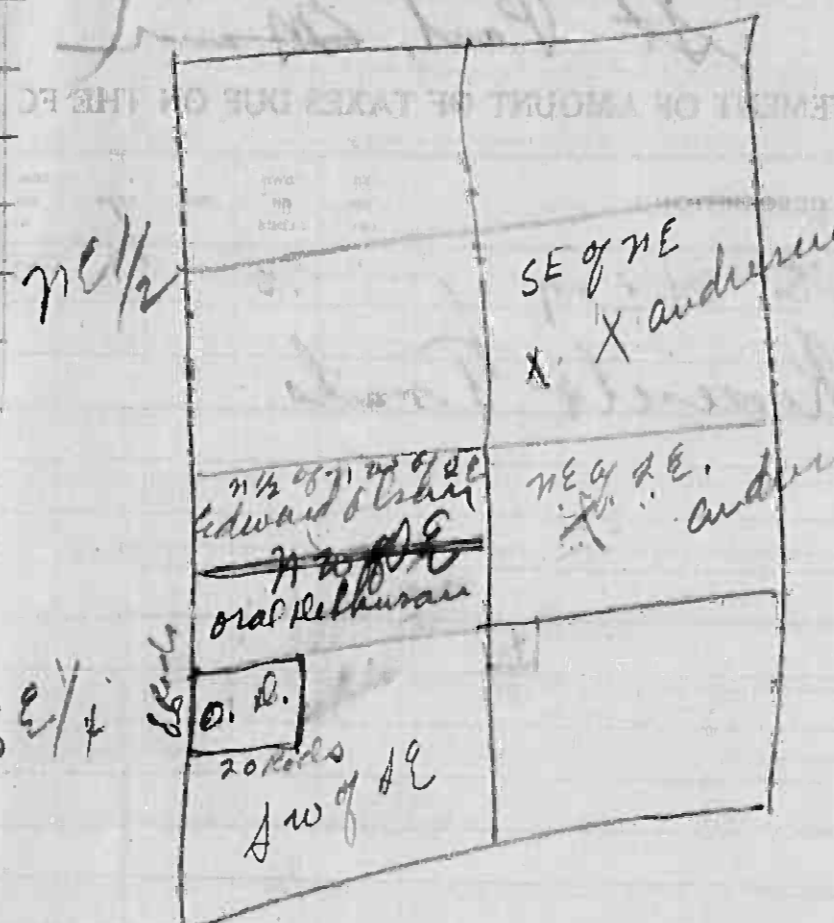
(Ref of Sec. 27 on next page)

142-31, Shingobee, Plat of Lot 7 and Plat of Lot 5



Assessment Roll and Tax List of Unplatted Real Property in the of Cass County, Minnesota, for Taxes for the Year 1945.

IN WHOSE NAME ASSESSED	TO WHOM TRANSFERRED	DESCRIPTION OF PROPERTY				No. School District	Indicate Home-land Yes or No	True and Full Value of Land Exclusive of Structures and Improvements Dollars	STI True Value Acres St
		SUBDIVISION	Sec. or Lot	Town or Block	Range				
Oral Dickinson		NE 1/4 of NE 1/4 less 1/2 of SE 1/4	27	142	31	5			
Edmund & Mary Olson		NW 1/4 of NE 1/4							
Elizabeth B. Andrus		SE 1/4 of NE 1/4 less 1/2 of SE 1/4							
		SE 1/4 of NE 1/4							
Dorothy Fluke		All of Lot 5 except E. 20 rods + all Lot 4							
John E. Andrus		NE 1/4 of NW 1/4 except E. 45 rods							
Stanley Edward and Mary Helen Bilben		1 ac of SE 1/4 of SW 1/4 lying E of NW 1/4 of NW 1/4							
		SW 1/4 of NW 1/4 of Lot 2							
		SE 1/4 of NW 1/4							
		NE 1/4 of SW 1/4							
		NW 1/4 of SW 1/4							
		SW 1/4 of SW 1/4							
		SE 1/4 of SW 1/4							
		NE 1/4 of SE 1/4							
		NW 1/4 of SE 1/4							
		SW 1/4 of SE 1/4							
		SE 1/4 of SE 1/4							



VALUED	Total Assessed Value as Equalized by the Department of Taxation Dollars	SOHD FOR TAXES	VALUATIONS BY SCHOOL DISTRICTS AS EQUALIZED BY DEPARTMENT OF TAXATION				Rate and Tax Less Homestead Exemption Mills	State Tax on Non-Homestead 6.54 Mills	TOTAL GENERAL TAX	SPECIAL TAXES				TOTAL TAXES	PAID	WHEN PAID	Number of Receipt	March Settlement 1946	June Settlement 1946	Penalty	November Settlement 1946	Penalty	Collections to First Monday in January 1947	Penalty	Delinquent on First Monday in January 1947	Total Delinquent Tax and Penalty	REMARKS
			District No. 5	District No. 1	District No. 2	District No. 3																					
1	1070		1070					1070						PAID IN FULL	MAY - 8 1945	4850	1070										
2																											
3	130		1784					1870						PAID IN FULL	MAY - 8 1945	4866	1870										
4																											
5																											
6	452		452					452						2nd Half Paid	OCT 28 1945	11759											
7	42		42					44						1st Half Paid	MAY 20 1945	5471											
8																											
9																											
10																											
11																											
12																											
13																											
14																											
15																											
16																											
17																											
18																											
19																											
20	3348		3348					3436																			

RETURN THIS STATEMENT WITH YOUR REMITTANCE

to the tax collector for the year of 1945

142-51  
Shipper Shingobee  
SE 1/4 Lot 7  
And. Plat of Lot 5



Assessment Roll and Tax List of Unplatted Real Property in the Town of Shingobee

Table with columns: IN WHOSE NAME ASSESSED, TO WHOM TRANSFERRED, DESCRIPTION OF PROPERTY, ASSESSOR'S VALUATION, EQUALIZED VALUES, VALUATIONS BY SCHOOL DISTRICTS AS EQUALIZED BY DEPARTMENT OF TAXATION, Rate and Tax Less Homestead Exemption, State Tax on Non-Homestead, TOTAL GENERAL TAX, SPECIAL TAXES, PAID, WHEN PAID, Number of Receipt, March Settlement 1946, June Settlement 1946, Penalty, November Settlement 1946, Penalty, Collections to First Monday in January 1947, Delinquent on First Monday in January 1947, Total Delinquent Tax and Penalty, REMARKS.

142-31

Search

Shipman Shingobee

15 Plat of Lot 7 and Plat of Lot 5



Assessment Roll and Tax List of Unplatted Real Property in the Town of Shingobee

Cass County, Minnesota, for Taxes for the Year 1945.

Table with columns: IN WHOSE NAME ASSESSED, TO WHOM TRANSFERRED, DESCRIPTION OF PROPERTY, ASSESSOR'S VALUATION, EQUALIZED VALUES, VALUATIONS BY SCHOOL DISTRICTS AS EQUALIZED BY DEPARTMENT OF TAXATION, SPECIAL TAXES, TOTAL TAXES, PAID, WHEN PAID, Number of Receipt, March Settlement 1946, June Settlement 1946, November Settlement 1946, Collections to First Monday in January 1917, Delinquent on First Monday in January 1917, Total Delinquent Tax and Penalty, REMARKS.

DEAR SIR: Walker, Minn., 1945. 1 ac. out of both the SE of NW 1 & NE of NW 2. 28-142-31. Harry H. Burdick. Yours very truly PAUL D. JEWELL, County Treasurer, Cass County, Minn.

142-51

Search

Chapters

Shingobee

1st Plat

SB 1 & Lot 7

And. Plat of Lot 5



Assessment Roll and Tax List of Unplatted Real Property in the Town of Shingobee

Table with columns: IN WHOSE NAME ASSESSED, TO WHOM TRANSFERRED, DESCRIPTION OF PROPERTY, ASSESSOR'S VALUATION, EQUALIZED VALUES, and TAXES. Includes handwritten entries for Stephen Gruber, Harry Paddock, and others.

Cass County, Minnesota, for Taxes for the Year 1945.

Table with columns: VALIDATIONS BY SCHOOL DISTRICTS AS EQUALIZED BY DEPARTMENT OF TAXATION, SPECIAL TAXES, TOTAL TAXES, PAID, WHEN PAID, and REMARKS. Includes handwritten entries for various districts and tax amounts.



Assessment Roll and Tax List of Unplatted Real Property in the Town of Shingobee

Cass County, Minnesota, for Taxes for the Year 1945.

Table with columns: IN WHOSE NAME ASSESSED, TO WHOM TRANSFERRED, DESCRIPTION OF PROPERTY, ASSESSOR'S VALUATION, EQUALIZED VALUES, VALUATIONS BY SCHOOL DISTRICTS AS EQUALIZED BY DEPARTMENT OF TAXATION, SPECIAL TAXES, TOTAL GENERAL TAX, PAID, WHEN PAID, Number of Receipt, March Settlement 1946, June Settlement 1946, Penalty, November Settlement 1946, Penalty, Collections to First Monday in January 1947, Penalty, Delinquent on First Monday in January 1947, Total Delinquent Tax and Penalty, REMARKS.

142-31

Beach

Chippewa Shingobee

1/2 Plat Sec 1 & Lot 7 And Plat of Lot 5



Assessment Roll and Tax List of Unplatted Real Property in the Town of Shingobee

Cass County, Minnesota, for Taxes for the Year 1945.

Table with columns: IN WHOSE NAME ASSESSED, TO WHOM TRANSFERRED, DESCRIPTION OF PROPERTY, ASSESSOR'S VALUATION, EQUALIZED VALUES, VALUATIONS BY SCHOOL DISTRICTS AS EQUALIZED BY DEPARTMENT OF TAXATION, SPECIAL TAXES, TOTAL GENERAL TAX, PAID, WHEN PAID, Number of Receipts, March Settlement 1946, June Settlement 1946, Penalty, November Settlement 1946, Penalty, Collections to First Monday in January 1947, Penalty, Delinquent on First Monday in January 1947, Total Delinquent Tax and Penalty, REMARKS.

142-31

Beech

Chipewah Shingobee

15 Plat & Lot 7 And. Plat of Lot 5



Assessment Roll and Tax List of Unplatted Real Property in the Town of Shingobee

Cass County, Minnesota, for Taxes for the Year 1945.

Table with columns: IN WHOSE NAME ASSESSED, TO WHOM TRANSFERRED, DESCRIPTION OF PROPERTY, ASSESSOR'S VALUATION, EQUALIZED VALUES, VALUATIONS BY SCHOOL DISTRICTS AS EQUALIZED BY DEPARTMENT OF TAXATION, Rate and Tax Less Homestead Exemption, State Tax on Non-Homestead, TOTAL GENERAL TAX, SPECIAL TAXES, TOTAL TAXES, PAID, WHEN PAID, Number of Receipts, March Settlement 1946, June Settlement 1946, Penalty, November Settlement 1946, Penalty, Collections to First Monday in January 1947, Penalty, Delinquent on First Monday in January 1947, Total Delinquent Tax and Penalty, REMARKS.

142-51

Beach

Chipewah Shingobee

15 Plat Sec 1 & Lot 7 And Plat of Lot 5



Assessment Roll and Tax List of Unplatted Real Property in the Town of Shingobee, Cass County, Minnesota, for Taxes for the Year 1945.

Table with columns: IN WHOSE NAME ASSESSED, TO WHOM TRANSFERRED, DESCRIPTION OF PROPERTY, ASSESSOR'S VALUATION, EQUALIZED VALUES, VALUATIONS BY SCHOOL DISTRICTS AS EQUALIZED BY DEPARTMENT OF TAXATION, SOLID FOR TAXES, SPECIAL TAXES, TOTAL GENERAL TAX, PAID, WHEN PAID, Number of Receipt, March Settlement 1946, June Settlement 1946, Penalty, November Settlement 1946, Penalty, Collections to First Monday in January 1947, Penalty, Delinquent on First Monday in January 1947, Total Delinquent Tax and Penalty, REMARKS.

142-01

Shingobee

Chippewa Shingobee

1st Plat & Lot 7 and Plat of Lot 5



Assessment Roll and Tax List of Unplatted Real Property in the Town of Shingobee, Minnesota

Cass County, Minnesota, for Taxes for the Year 1945.

Table with columns: IN WHOSE NAME ASSESSED, TO WHOM TRANSFERRED, DESCRIPTION OF PROPERTY, ASSESSOR'S VALUATION, EQUALIZED VALUES, VALUATIONS BY SCHOOL DISTRICTS AS EQUALIZED BY DEPARTMENT OF TAXATION, SPECIAL TAXES, TOTAL GENERAL TAX, PAID, WHEN PAID, Number of Receipt, March Settlement 1946, June Settlement 1946, Penalty, November Settlement 1946, Collections to First Monday in January 1947, Delinquent on First Monday in January 1947, Total Delinquent Tax and Penalty, REMARKS.

142-51

Bench

Shingobee

1st Plat Sp. & Lot 7 And. Plat of Lot 5



Assessment Roll and Tax List of Unplatted Real Property in the Town of Shingobee, Cass County, Minnesota, for Taxes for the Year 1945.

Table with columns: IN WHOSE NAME ASSESSED, TO WHOM TRANSFERRED, DESCRIPTION OF PROPERTY, ASSESSOR'S VALUATION, EQUALIZED VALUES, VALUATIONS BY SCHOOL DISTRICTS AS EQUALIZED BY DEPARTMENT OF TAXATION, SPECIAL TAXES, TOTAL GENERAL TAX, PAID, WHEN PAID, Number of Receipt, March Settlement 1946, June Settlement 1946, Penalty, November Settlement 1946, Penalty, Collections to First Monday in January 1947, Penalty, Delinquent on First Monday in January 1947, Total Delinquent Tax and Penalty, REMARKS.

(Bal of Sec 35 on next page)

15 Plat & Lot 7 And. Plat of Lot 5



Assessment Roll and Tax List of Unplatted Real Property in the Town of Shingobee

Cass County, Minnesota, for Taxes for the Year 1945.

Table with columns: IN WHOSE NAME ASSESSED, TO WHOM TRANSFERRED, DESCRIPTION OF PROPERTY, ASSESSOR'S VALUATION, EQUALIZED VALUES, VALUATIONS BY SCHOOL DISTRICTS AS EQUALIZED BY DEPARTMENT OF TAXATION, Rate and Tax Less Homestead Exemption, State Tax on Non-Homestead, TOTAL GENERAL TAX, SPECIAL TAXES, TOTAL TAXES, PAID, WHEN PAID, Number of Receipt, March Settlement 1946, June Settlement 1946, Penalty, November Settlement 1946, Penalty, Collections to First Monday in January 1947, Delinquent on First Monday in January 1947, Total Delinquent Tax and Penalty, REMARKS.

Carl S. + Frances Draper

Geo. M. + Daisy Stemberling

100' on N 1/2 371 X 300' of Lot 1 + NE 1/4 of NE 1/4

2 acc. of NE 1/4 of NW 1/4

NW 1/4 of NE 1/4

SW 1/4 of NE 1/4

SE 1/4 of NE 1/4

NE 1/4 of NW 1/4

NW 1/4 of NW 1/4

SW 1/4 of NW 1/4

SE 1/4 of NW 1/4

NE 1/4 of SW 1/4

NW 1/4 of SW 1/4

SW 1/4 of SW 1/4

SE 1/4 of SW 1/4

NE 1/4 of SE 1/4

NW 1/4 of SE 1/4

SW 1/4 of SE 1/4

SE 1/4 of SE 1/4

1

2

3

4

5

6

7

8

9

10

11

12

13

14

15

16

17

18

19

20

7

96

04

100

7

96

04

100

100 8 110

142-31

Chippewa Shingobee

Plat 5 & Lot 7 Aud. Plat of Lot 5











































Assessment Roll and Tax List of Platted Real Property in the Town of Shingobee, Minnesota

Cass County, Minnesota, for Taxes for the Year 1945.

Table with columns: IN WHOSE NAME ASSESSED, TO WHOM TRANSFERRED, DESCRIPTION OF PROPERTY, ASSESSOR'S VALUATION, EQUALIZED VALUES, VALUATIONS BY SCHOOL DISTRICTS AS EQUALIZED BY DEPARTMENT OF TAXATION, SPECIAL TAXES, TOTAL GENERAL TAX, PAID, WHEN PAID, Number of Receipt, March Settlement 1946, June Settlement 1946, Penalty, November Settlement 1946, Collection to First Monday in January 1947, Delinquent on First Monday in January 1947, Total Delinquent Tax and Penalty, REMARKS.

Vertical text on the left margin: Sunrise Beach, Ojibway, Chipperan Point, Shingobee, Auditor's List, Kabekona Springs, Plat of Lot 5, Aud. Plat of Lot 5.

Vertical text on the right margin: 1st Add'n, Cent Beach, Gitchie Gumee Beach, Crescent Beach, Gitchie Gumee Beach, 1st Add'n.











Assessment Roll and Tax List of Platted Real Property in the Town of Shingobee, Cass County, Minnesota, for Taxes for the Year 1945.

Surprise Beach, Ojibway, Ball's 1st Add'n to Gitchie Gumee Beach, Shingobee, Garrison, Springs, Gitchie Gumee Beach, Aud. Plat of I., Gitchie Gumee Beach, Aud. Plat of I., Gitchie Gumee Beach

Surprise Beach, Treary Point, Sunrise Heights, Crescent Beach, Sun Beach, Crescent Beach 1st Add'n.

Table with columns: WHOSE NAME ASSESSED, TO WHOM TRANSFERRED, SUBDIVISION, Lot, Block, No. School District, Indicate Homestead, ASSESSOR'S VALUATION, EQUALIZED VALUES, VALUATIONS BY SCHOOL DISTRICTS AS EQUALIZED BY DEPARTMENT OF TAXATION, Rate and Tax Less Exemption, State Tax on Non-Homestead, TOTAL GENERAL TAX, SPECIAL TAXES, TOTAL TAXES, PAID, WHEN PAID, Number of Receipt, March Settlement 1946, June Settlement 1946, November Settlement 1946, Collections to First Monday in January 1947, Delinquent on First Monday in January 1947, Total Delinquent Tax and Penalty, REMARKS.

Chas. E. Bell & Ball Johnson  
Allen G. + Janet D. Thurman  
R. E. Wilson  
Charles S. + Helen Agnes Reddy  
L. A. Bassett  
L. D. Garrison  
John S. Crary  
F. L. + R. N. Mackey  
Stade Munneke  
Vera Howard Patch

SOLD FOR TAXES

692 10528 456

10984







Assessment Roll and Tax List of Platted Real Property in the Town of Shingobee

Cass County, Minnesota, for Taxes for the Year 1945.

Table with columns: IN WHOSE NAME ASSESSED, TO WHOM TRANSFERRED, SUBDIVISION, Lot, Block, No. School District, ASSESSOR'S VALUATION, EQUALIZED VALUES, VALUATIONS BY SCHOOL DISTRICTS AS EQUALIZED BY DEPARTMENT OF TAXATION, Rate and Tax Less Homestead Exemption, State Tax on Non-Homestead, TOTAL GENERAL TAX, SPECIAL TAXES, TOTAL TAXES, PAID, WHEN PAID, Number of Receipt, March Settlement 1946, June Settlement 1946, Penalty, November Settlement 1946, Penalty, Collections to First Monday in January 1947, Delinquent on First Monday in January 1947, Total Delinquent Tax and Penalty, REMARKS.

Shingobee Beach, Breezy Point, Bell's 1st Add, Gitchie Gume, 7 Shingobee, a Springs, Gitchie Gume Beach, Aud. Plat of L. Gitchie Gume Beach

Wa-Ba-Na-Ne-Bay, Sunrise Heights, Crescent Beach on Beach, Crescent Beach 1st Add'n.











Assessment Roll and Tax List of Platted Real Property in the Town of Shingobee  
 Platted Real Estate Assessed at 40 Per Cent of True and Full Value; Attached Machinery at 33 1/2 Per Cent of True and Full Value; Homesteads, up to True and Full Value of \$1000, Assessable at 25 Per Cent, Class 3C; Attached Machinery at 33 1/2 Per Cent, Class 3; Remainder at 40 Per Cent, Class 4.

Wa-Pa-Na-No-Bay  
 Ball's 1st Add'n  
 Gilchie-Gunne  
 Crescent Beach  
 Beachie Gunne  
 Beachie Gunne  
 1st Add'n  
 Beachie Gunne

IN WHOSE NAME ASSESSED	TO WHOM TRANSFERRED	DESCRIPTION OF PROPERTY		No. School District	In-clude Homestead Yes or No	ASSESSOR'S VALUATION						EQUALIZED VALUES				SOLD FOR TAXES
		Lot	Block			True and Full Value of Land Exclusive of Structures and Improvements	STRUCTURES & IMPROVEMENTS	Total True and Full Value of Land Including all Structures, Improvements and Machinery	Assessed Value of Homesteads up to \$1,000 at 25 per cent Class 3C	Assessed Value of Machinery Permanently Attached to Real Estate at 33 1/2 per cent Class 3	Assessed Value of Remainder at 40 per cent Class 4	Total Assessed Value of Land Including all Structures, Improvements and Machinery	Total Assessed Value as Equalized by the Board of Review	Total Assessed Value as Equalized by the County Board	Total Assessed Value as Equalized by the Department of Taxation	
U. S. of America		1														
U. S. of America		2														
U. S. of America		3														
U. S. of America		4														
U. S. of America		5														
U. S. of America		6														
U. S. of America		7														
U. S. of America		8														
U. S. of America		9														
State of Minnesota	Robert Deere	10														SOLD FOR TAXES
State of Minnesota		11														
U. S. of America	Robt. K. Tuck + One-tah-ki-e-shig-abe	12														
U. S. of America		13														
U. S. of America		14														
U. S. of America	Harry W. Anderson Pearl J. Anderson	15														
U. S. of America		16														
U. S. of America		17														
U. S. of America		18														
U. S. of America		19														
U. S. of America		20														

Cass County, Minnesota, for Taxes for the Year 1945.

VALUATIONS BY SCHOOL DISTRICTS AS EQUALIZED BY DEPARTMENT OF TAXATION	Rate and Tax Less Homestead Exemption	State Tax on Non-Homestead	TOTAL GENERAL TAX	SPECIAL TAXES						TOTAL TAXES	PAID	WHEN PAID	Number of Receipts	March Settlement 1946	June Settlement 1946	Penalty	November Settlement 1946	Penalty	Collections to First Monday in January 1947	Penalty	Delinquent on First Monday in January 1947	Total Delinquent Tax and Penalty	REMARKS	
				District No.	District No.	District No.	District No.	District No.	District No.															
1																								
2																								
3																								
4																								
5																								
6																								
7																								
8																								
9																								
10																								
11																								
12																								
13																								
14																								
15																								
16																								
17																								
18																								
19																								
20																								

Sunrise Heights  
 Charlton Beach











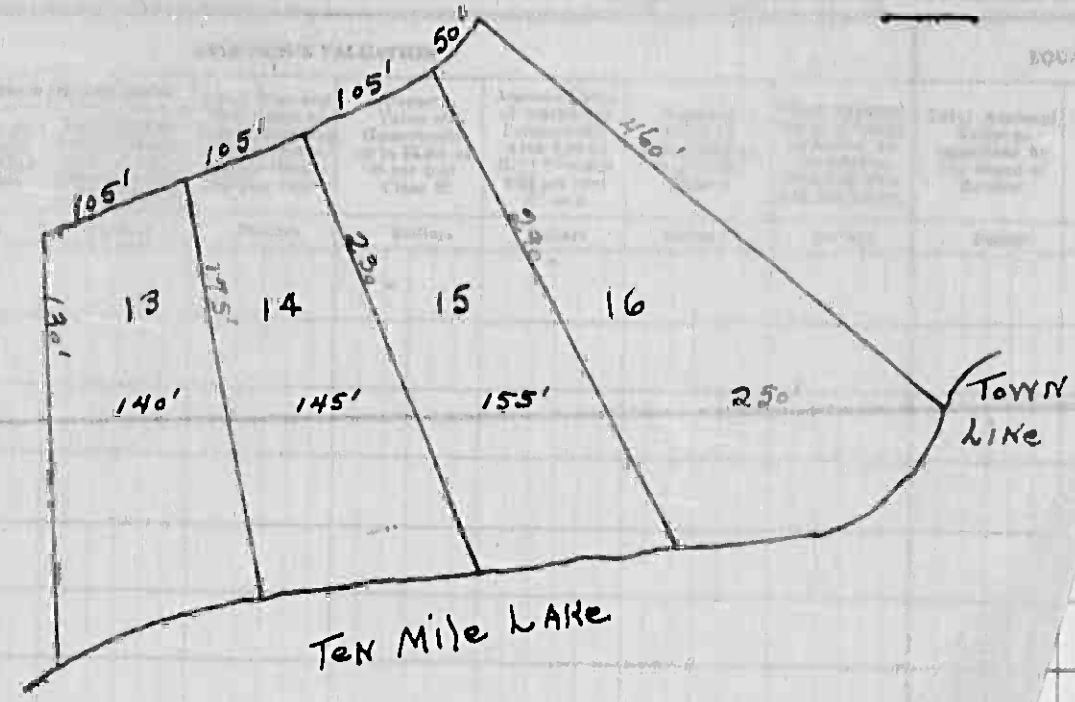
Assessment Roll and Tax List of Platted R

Platted Real Estate Assessed at 40 Per Cent of True and Full Value; Attached Machinery at 33 1/3 Per Cent of True and Full Value

DESCRIPTION OF PROPERTY

IN WHOSE NAME ASSESSED	TO WHOM TRANSFERRED	Lot	Block
Ollie L. Kridelbaugh	That part of Lot 13 lying N of S. line of L. 141 Pge. 31	13	
Edmer L. Gookin	Jan N. Carpenter	14	
Ollie L. Kridelbaugh	" " "	15	
William Eikenberry	" " "	16	
Helen O. Reese	" " "	17	
William Eikenberry	" " "	18	
" "	" " "	19	
Helen O. Reese	" " "	20	
William Eikenberry	Jane & Allen L. Dewey	21	
Edmer L. Gookin	George & Maudie Martens	22	
William Eikenberry	" " "	23	
Helen O. Reese	" " "	24	
Edmer L. Gookin	" " "	25	
William Eikenberry	Outlet	A	
	"	B	

SHINGOBE TWP.  
NIRAM TWP.



ASSESSED VALUES	TOTAL ASSESSED VALUE
Assessed for as listed by County card	Value as Equalized by the Department of valuation
Dollars	Dollars

SOLD FOR TAXES

District No.	VALUATIONS BY SCHOOL DISTRICTS AS EQUALIZED BY DEPARTMENT OF TAXATION				Rate and Tax Less Homestead Exemption	State Tax on Non-Homestead	TOTAL GENERAL TAX	SPECIAL TAXES				TOTAL TAXES	PAID	WHEN PAID	Number of Receipt	March Settlement 1946	June Settlement 1946	Penalty	November Settlement 1946	Penalty	Collections to First Monday in January 1947	Penalty	Delinquent on First Monday in January 1947	Total Delinquent Tax and Penalty	REMARKS	
	Rate	Rate	Rate	Rate				\$ cts.	\$ cts.	\$ cts.	\$ cts.															\$ cts.
1	20				304	14	318						1	PAID IN FULL	MAY 20 1946	5295	318									
2	30				456	20	476						2	PAID IN FULL	APR 15 1946	4889	476									
3	40				608	26	634						3	PAID IN FULL	MAY 20 1946	5295	634									
4	60				912	40	952						4	PAID IN FULL	MAY 13 1946	4890	952									
5	20				304	14	318						5	PAID IN FULL	JUN 4 1946	5815	318									
6	20				304	14	318						6	PAID IN FULL	JUL 16 1946	9510	318									
7	20				304	14	318						7	PAID IN FULL	MAY 20 1946	5295	318									
8	20				304	14	318						8	PAID IN FULL	JUN 4 1946	5815	318									
9	20				304	14	318						9	PAID IN FULL	JUL 16 1946	9510	318									
10	20				304	14	318						10	PAID IN FULL	JUL 12 1946	8921	318									
11	20				304	14	318						11	PAID IN FULL	APR 15 1946	4889	318									
12	20				304	14	318						12	PAID IN FULL	JUN 4 1946	5815	318									
13	20				304	14	318						13	PAID IN FULL	JUL 16 1946	9510	318									
14	8				122	86	128						14	PAID IN FULL	MAY 18 1946	4960	256									
15	8				122	86	128						15	PAID IN FULL	MAY 18 1946	4960	256									
16													16													
17													17													
18													18													
19													19													
20													20													

N.H. 346 Page Total 5260 238

Page Total 5498

N.H. 6140  
N.H. 8523  
14719 Grand Total

Grand Total 229628



Assessment Roll and Tax List of Platted Real Property in the Town of Shingobee, Cass County, Minnesota, for Taxes for the Year 1945.

Table with columns: IN WHOSE NAME ASSESSED, TO WHOM TRANSFERRED, DESCRIPTION OF PROPERTY, ASSESSOR'S VALUATION, EQUALIZED VALUES, and TAXES. Includes handwritten entries for Ollie L. Kridelbaugh, Edmer L. Gookin, William Eikenberry, and Helen O. Reese.

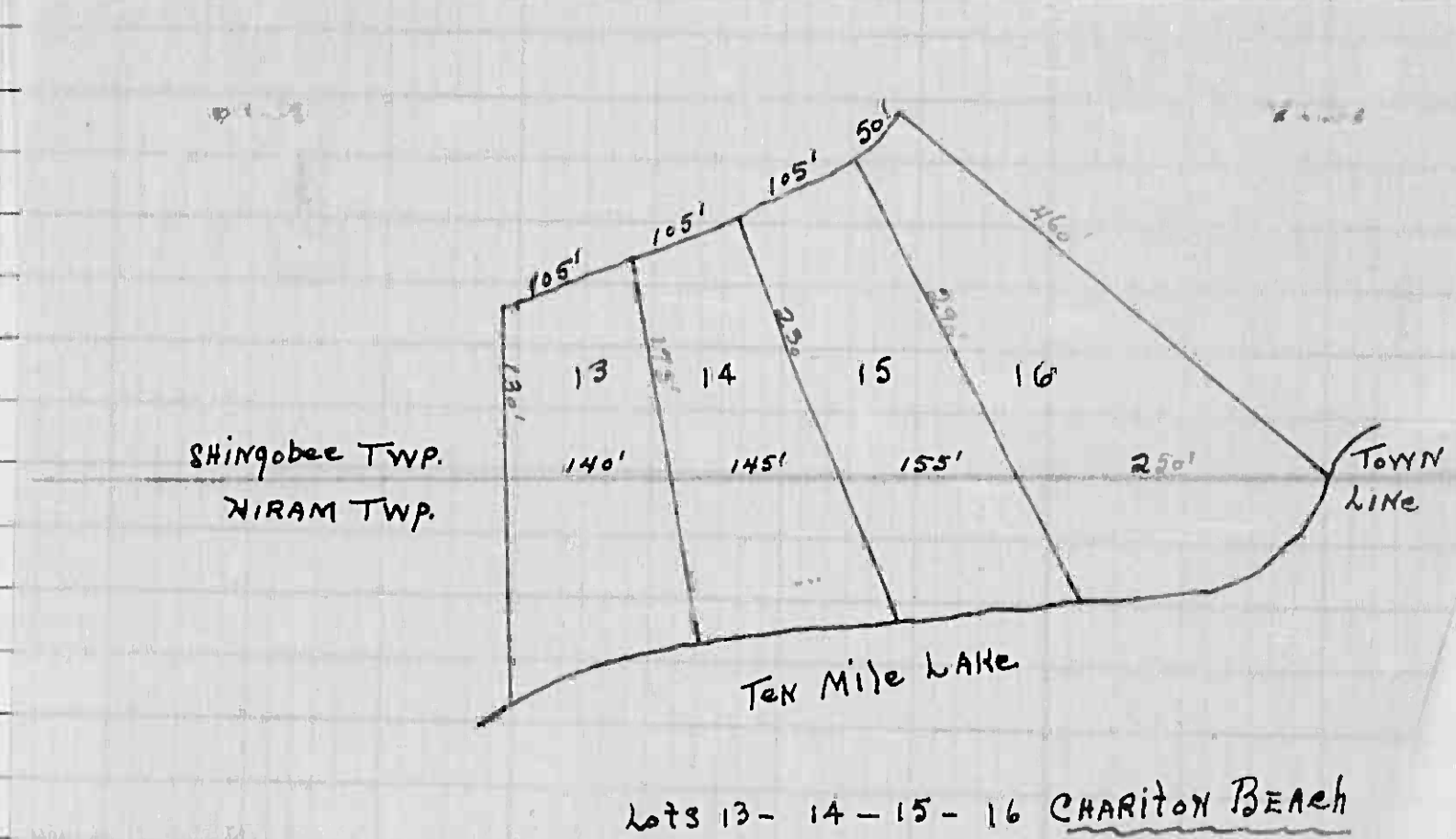


Table with columns: VALUATIONS BY SCHOOL DISTRICTS AS EQUALIZED BY DEPARTMENT OF TAXATION, Rate and Tax Less Homestead Exemption, State Tax on Non-Homestead, TOTAL GENERAL TAX, SPECIAL TAXES, PAID, WHEN PAID, Number of Receipt, March Settlement 1946, June Settlement 1946, Penalty, November Settlement 1946, Penalty, Collections to First Monday in January 1947, Penalty, Delinquent on First Monday in January 1947, Total Delinquent Tax and Penalty, REMARKS. Includes handwritten totals for page 346 and grand totals.

H. 6146  
N.H. 8573  
14719 Grand Total

Grand Total 229628











