

ASSESSMENT & TAX LIST

Shingobee

1944

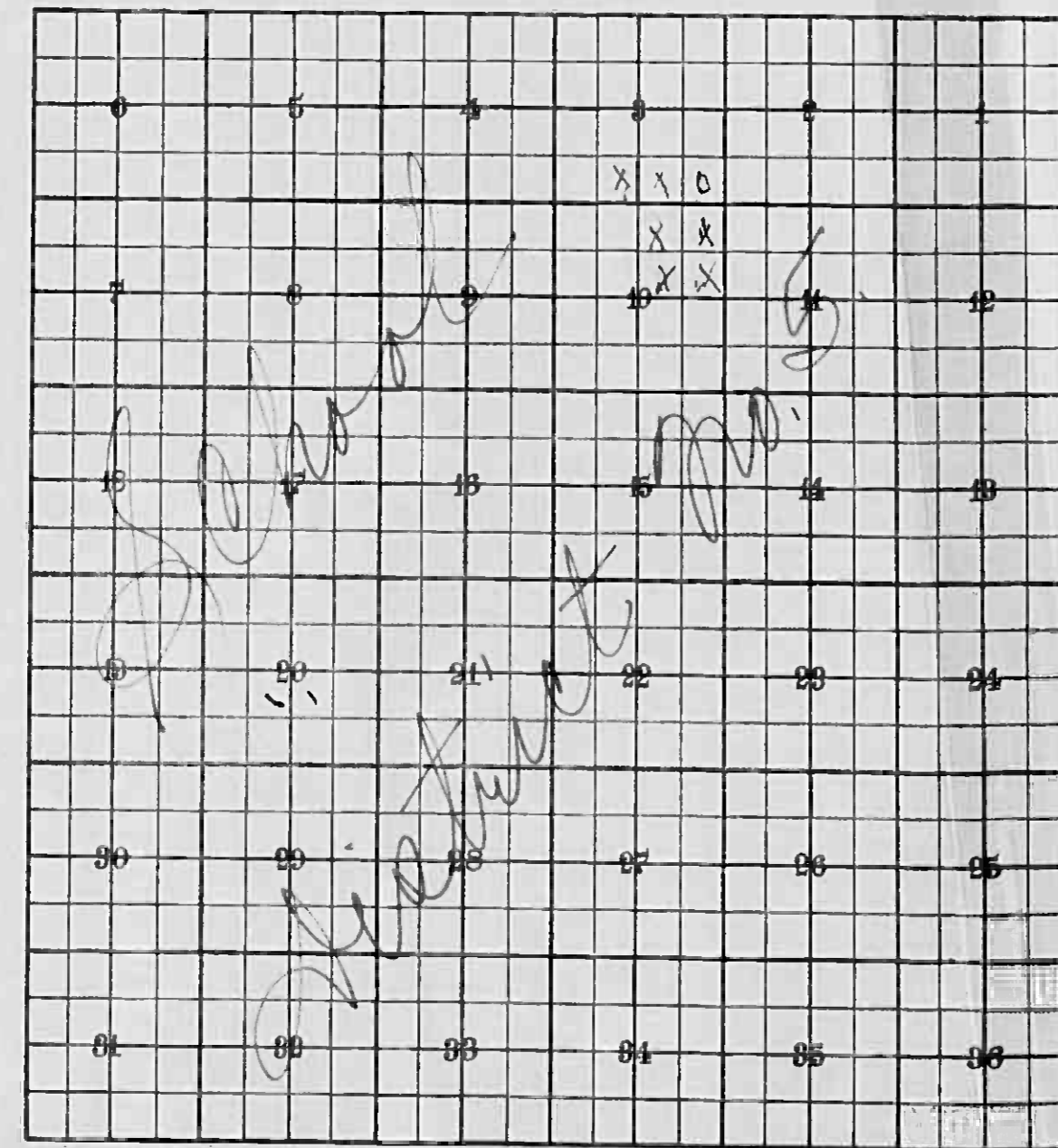
INDEX TO SECTIONS

SECTION PAGE

Sec. 1	
" 2	
" 3	
" 4	
" 5	
" 6	
" 7	
" 8	
" 9	
" 10	
" 11	
" 12	
" 13	
" 14	
" 15	
" 16	
" 17	
" 18	
" 19	
" 20	
" 21	
" 22	
" 23	
" 24	
" 25	
" 26	
" 27	
" 28	
" 29	
" 30	
" 31	
" 32	
" 33	
" 34	
" 35	
" 36	

For Convenience of Auditor in Showing Boundaries of School Districts

Township No. 141-142 Range No. 31 Mer. P. M.



Returns Showing Grain Received in or Handled by Elevators, Warehouses and Mills in the _____ of _____ in the County of _____ for the Year 1943.

NAMES OF OWNERS	Bushels of Wheat	Bushels of Soy Beans	Bushels of Flax	Total No. of Bushels of Wheat, Soy Beans and Flax	Tax of $\frac{1}{4}$ Mill per Bushel		Bushels of Corn	Bushels of Barley	Bushels of Rye	Bushels of Oats	Bushels of Buckwheat	Bushels of all Other Grains	Total No. Bushels Corn, Barley, Rye, Oats, Buckwheat and all Other Grains	Tax of $\frac{1}{4}$ Mill Per Bushel		Total Tax		REMARKS
					Dollars	Cts.								Dollars	Cts.			

Note ★ Assessors will not fill these Columns

Assessor's Return of Exempt Real Property in the _____ of _____ County of _____, Minnesota, for the Year 1944

NAMES OF OWNERS	SUBDIVISION	Sec. or Lot	Town or Block	No. of Acres	FOR WHAT PURPOSE USED	ASSESSOR'S VALUATIONS				REMARKS	
						True and Full Value of Lands Exclusive of Structures and Improvements Dollars	STRUCTURES AND IMPROVEMENTS True and Full Value of Buildings and other Structures Dollars	True and Full Value of Machinery Permanently Attached to Real Estate Dollars	Total True and Full Value of Lands including all Structures, Improvements and Machinery Dollars		Assessed Value of Lands including all Structures, Improvements and Machinery Dollars
Shingler Prof	NE NW 1/4	28	142 31	39 50	Down Hill and grounds	200	3000		3200	1067	
State of Minn.	SE 1/4	34	142 31		Penal Camp	3400	3000		5900	1800	
	S 1/2 NE 1/4	"	"	"		1200			1200	400	
	S 1/2 NW 1/4	35	"	"		1200			1200	400	
	S NW 1/4	"	"	"	State Sanitarium	2900	6786 2/3		6810 1/3	22700 5	
	Lots 2-3-4	"	"	"		2700			2700	900	
	LA 0	2	142 31			600			600	200	
Village of Walker	5 acres SE 1/4 S.E. 1/4	21	142 31		Cemetery	300			300	100	

695615231872

Assessor's Return of Exe

FORM 2 WILSON-DIXON COMPANY, MINNEAPOLIS

NAMES OF OWNERS

Treasurer's Office, Cass County, Minnesota

RECEIVED this, the first Monday (being the 2nd day) of January,
 A. D. 1945, of L. C. Peterson, Auditor of said County, Minnesota,
 the Tax List of all Taxable Real and Personal Property in the Town
 of Shingobe in said County for the year A. D. 1944,
 as specified above and amounting to _____ Dollars

W. J. McFadden
 County Treasurer

Office of County Treasurer, Cass County, Minnesota

Jan 7, 1946

To L. C. Peterson, County Auditor:

Sir: I herewith return to you the Tax List for the Town
 of Shingobe in said County for the year 1944, heretofore
 received from you. I certify that I have compared the same with the duplicate receipts in
 your office, and have written opposite the amount of each tax so received the words "First
 Quarter Paid", "Second Quarter Paid", "Third Quarter Paid" or "Paid in full" as the
 case may be, and the number of my receipt given in discharge of said tax, and each tract
 or lot of real property against which the taxes remain unpaid is delinquent for said year.

Yours respectfully,
Paul A. Jewell
 County Treasurer.

Auditor's Office, Cass County, Minnesota

I, _____ Auditor of said County, and State
 of Minnesota, do hereby certify that the following is a correct list of the Taxes levied on the
 Real and Personal Property in the _____ of _____
 for the year 1944.

WITNESS my hand and official seal, the _____ day of _____
 1945.

(SEAL) _____ County Auditor.

Auditor's Office, Cass County, Minnesota

194

I hereby certify that on the first Monday in January 1946, I received of _____
 _____ County Treasurer, the Tax List of the
 _____ of _____ in said
 County for the year 1944; that I have compared the said list with the Statements received
 for by said Treasurer, which are on file in my office, and that each tract or lot of real
 property therein against which the taxes, or any part thereof, remains unpaid are delin-
 quent for said year.

(SEAL) _____ County Auditor.

Assessor's Return of Ex

COLLECTIONS OF TAXES OF 1914, *Town* OF *Shingobee*, CASS COUNTY, MINNESOTA

FORM 2-31-1914

FUNDS	MARCH SETTLEMENT 1914	JUNE SETTLEMENT 1914	NOV. SETTLEMENT 1914	Amount Collected from Nov. 1914 to First Monday in Jan. 1915	REDUCTIONS	Total Reductions and Collected	BALANCE UNCOLLECTED	ADDITIONS	Total Uncollected to First Monday in January, 1915
State Revenue, State School, Teachers Insurance, State Debt—Non-Homestead, State Debt—Homestead,	2443 1771	8891 6907	3535 2681						
County Revenue, County Road and Bridge, County Welfare, County Bond and Interest,	24860 7152 39731 22476	96948 27889 154946 87652	37633 10826 60144 34024						
Town Revenue, Town Road and Bridge, Town Drain, Town State Loan, <i>Town Tele. Comm.</i>	2270 11352 1135 2838 2838 1135	8854 44269 4427 11067 11067 4427	3437 17184 1718 4296 4296 1718						
School Local 1 Mill, School Special, School State Loan, <i>Ref. 1913</i>	1136 37009 1703 3405 9762	4427 111720 6641 13280 38071	1719 39240 2578 5155 14778						
	173016	641477	244962						

	SCHOOL DISTRICT NO.	LOCAL 1 MILL	SPECIAL	STATE LOAN	Reficiency	C.O.	Ref. 1913	TOTALS
MARCH SETTLEMENT	School District No. 5	1136	37009		1703	3405	9762	53015
	Totals	1136	37009		1703	3405	9762	53015
JUNE SETTLEMENT	School District No. 5	4427	111720		6641	13280	38071	174139
	Totals	4427	111720		6641	13280	38071	174139
NOVEMBER SETTLEMENT	School District No. 5	1719	39240		2578	5155	14778	63470
	Totals	1719	39240		2578	5155	14778	63470
NOVEMBER to JANUARY	School District No.							
	Totals							
ADDITIONS	School District No.							
	Totals							
REDUCTIONS	School District No.							
	Totals							

Assessment Roll and Tax List of Unplatted Real Property in the of Cass County, Minnesota, for Taxes for the Year 1944.

Table with columns: IN WHOSE NAME ASSESSED, TO WHOM TRANSFERRED, DESCRIPTION OF PROPERTY, ASSESSOR'S VALUATION, EQUALIZED VALUES, VALUATIONS BY SCHOOL DISTRICTS AS EQUALIZED BY DEPARTMENT OF TAXATION, Rate and Tax Less Homestead Exemption, State Tax on Non-Homestead, TOTAL GENERAL TAX, SPECIAL TAXES, TOTAL TAXES, PAID, WHEN PAID, Number of Receipt, March Settlement 1945, June Settlement 1945, Penalty, November Settlement 1945, Penalty, Collections to First Monday in January 1946, Penalty, Delinquent on First Monday in January 1946, Total Delinquent Tax and Penalty, REMARKS.

Assessment Roll and Tax List of Unplatted Real Property in the of Unplatted Real Estate Assessed at 33 1/3 Per Cent of True and Full Value; Attached Machinery at 33 1/3 Per Cent of True and Full Value, Homesteads, up to True and Full Value of \$4000, Assessable at 20 per Cent, Class 3B; Remainder at 33 1/3 Per Cent, Class 3.

Table with columns: IN WHOSE NAME ASSESSED, TO WHOM TRANSFERRED, DESCRIPTION OF PROPERTY, ASSESSOR'S VALUATION, EQUALIZED VALUES, VALUATIONS BY SCHOOL DISTRICTS AS EQUALIZED BY DEPARTMENT OF TAXATION, Rate and Tax Less Homestead Exemption, State Tax on Non-Homestead, TOTAL GENERAL TAX, SPECIAL TAXES, PAID, WHEN PAID, Number of Receipt, March Settlement 1945, June Settlement 1945, Penalty, November Settlement 1945, Penalty, Collections to First Monday in January 1946, Penalty, Delinquent on First Monday in January 1946, Total Delinquent Tax and Penalty, REMARKS.

Assessment Roll and Tax List of Unplatted Real Property in the of Unplatted Real Estate Assessed at 33 1/2 Per Cent of True and Full Value; Attached Machinery at 33 1/2 Per Cent of True and Full Value, Homesteads, up to True and Full Value of \$4000, Assessable at 20 per Cent, Class 3B; Remainder at 33 1/2 Per Cent, Class 3.

Table with columns: IN WHOSE NAME ASSESSED, TO WHOM TRANSFERRED, DESCRIPTION OF PROPERTY, ASSESSOR'S VALUATION, EQUALIZED VALUES, VALUATIONS BY SCHOOL DISTRICTS AS EQUALIZED BY DEPARTMENT OF TAXATION, Rate and Tax Less Homestead Exemption, State Tax on Non-Homestead, TOTAL GENERAL TAX, SPECIAL TAXES, PAID, WHEN PAID, Number of Receipt, March Settlement 1945, June Settlement 1945, Penalty, November Settlement 1945, Penalty, Collections to First Monday in January 1946, Penalty, Delinquent on First Monday in January 1946, Total Delinquent Tax and Penalty, REMARKS.

Assessment Roll and Tax List of Unplatted Real Property in the of Unplatted Real Estate Assessed at 33 1/3 Per Cent of True and Full Value; Attached Machinery at 33 1/3 Per Cent of True and Full Value, Homesteads, up to True and Full Value of \$4000, Assessable at 20 per Cent, Class 3B; Remainder at 33 1/3 Per Cent, Class 3.

Table with columns: IN WHOSE NAME ASSESSED, TO WHOM TRANSFERRED, DESCRIPTION OF PROPERTY, ASSESSOR'S VALUATION, EQUALIZED VALUES, VALUATIONS BY SCHOOL DISTRICTS AS EQUALIZED BY DEPARTMENT OF TAXATION, Rate and Tax Less Homestead Exemption, State Tax on Non-Homestead, TOTAL GENERAL TAX, SPECIAL TAXES, PAID, WHEN PAID, Number of Receipt, March Settlement 1945, June Settlement 1945, Penalty, November Settlement 1945, Penalty, Collections to First Monday in January 1946, Penalty, Delinquent on First Monday in January 1946, Total Delinquent Tax and Penalty, REMARKS.

Assessment Roll and Tax List of Unplatted Real Property in the of Cass County, Minnesota, for Taxes for the Year 1944.

Form 4 CD

Table with columns: IN WHOSE NAME ASSESSED, TO WHOM TRANSFERRED, DESCRIPTION OF PROPERTY, ASSESSOR'S VALUATION, EQUALIZED VALUES, VALUATIONS BY SCHOOL DISTRICTS AS EQUALIZED BY DEPARTMENT OF TAXATION, SPECIAL TAXES, PAID, WHEN PAID, Number of Receipt, March Settlement 1945, June Settlement 1945, Penalty, November Settlement 1945, Penalty, Collections to First Monday in January 1946, Penalty, Delinquent on First Monday in January 1946, Total Delinquent Tax and Penalty, REMARKS.

Assessment Roll and Tax List of Unplatted Real Property in the of Cass County, Minnesota, for Taxes for the Year 1944.

Form 4 CD BAKER-BAYNE COMPANY, MINNEAPOLIS

Table with columns: IN WHOSE NAME ASSESSED, TO WHOM TRANSFERRED, DESCRIPTION OF PROPERTY, ASSESSOR'S VALUATION, EQUALIZED VALUES, SOLD FOR TAXES. Includes handwritten entries for Gust Peter, J.E. Lundberg, and Hilda Lenora Bissell.

Cass County, Minnesota, for Taxes for the Year 1944.

Table with columns: VALUATIONS BY SCHOOL DISTRICTS AS EQUALIZED BY DEPARTMENT OF TAXATION, Rate and Tax Less Homestead Exemption, State Tax on Non-Homestead, TOTAL GENERAL TAX, SPECIAL TAXES, PAID, WHEN PAID, Number of Receipt, March Settlement 1945, June Settlement 1945, November Settlement 1945, Collections to First Monday in January 1946, Delinquent on First Monday in January 1946, Total Delinquent Tax and Penalty, REMARKS. Includes handwritten entries for Abatement #2684 and various payment dates.

Cass County, Minnesota, for Taxes for the Year 1944.

Assessment Roll and Tax List of Unplatted Real Property in the of Unplatted Real Estate Assessed at 33 1/2 Per Cent of True and Full Value; Attached Machinery at 33 1/2 Per Cent of True and Full Value. Homesteads, up to True and Full Value of \$4000, Assessable at 20 per Cent, Class 3B; Remainder at 33 1/2 Per Cent, Class 3.

Table with columns: IN WHOSE NAME ASSESSED, TO WHOM TRANSFERRED, SUBDIVISION, ASSESSOR'S VALUATION, EQUALIZED VALUES, and SOLD FOR TAXES. Includes handwritten entries for various property owners like 'State of Minnesota' and 'Dolly Cummings'.

Table with columns: VALUATIONS BY SCHOOL DISTRICTS AS EQUALIZED BY DEPARTMENT OF TAXATION, Rate and Tax Less Homestead Exemption, State Tax on Non-Homestead, TOTAL GENERAL TAX, SPECIAL TAXES, TOTAL TAXES, PAID, WHEN PAID, Number of Receipt, March Settlement 1945, June Settlement 1945, Penalty, November Settlement 1945, Penalty, Collections to First Monday in January 1946, Penalty, Delinquent on First Monday in January 1946, Total Delinquent Tax and Penalty, and REMARKS. Includes handwritten notes on payment dates and amounts.

Assessment Roll and Tax List of Unplatted Real Property in the
Unplatted Real Estate Assessed at 33 1/2 Per Cent of True and Full Value; Attached Machinery at 33 1/2 Per Cent of True and Full Value. Homesteads, up to True and Full Value of \$4000, Assessable at 20 per Cent, Class 3B; Remainder at 33 1/2 Per Cent, Class 3.

Table with columns: IN WHOSE NAME ASSESSED, TO WHOM TRANSFERRED, SUBDIVISION, No. School District, Indicate Homestead, True and Full Value of Land, Structures & Improvements, Assessor's Valuation, Equalized Values, SOLD FOR TAXES.

Table with columns: VALUATIONS BY SCHOOL DISTRICTS AS EQUALIZED BY DEPARTMENT OF TAXATION, Rate and Tax on Homestead Exemption, State Tax on Non-Homestead, TOTAL GENERAL TAX, SPECIAL TAXES, TOTAL TAXES, PAID, WHEN PAID, Number of Receipt, March Settlement, June Settlement, Penalty, November Settlement, Penalty, Collections to First Monday, Delinquent on First Monday, Total Delinquent Tax and Penalty, REMARKS.

Assessment Roll and Tax List of Unplatted Real Property in the of Unplatted Real Estate Assessed at 33 1/4 Per Cent of True and Full Value; Attached Machinery at 33 1/2 Per Cent of True and Full Value; Homesteads, up to True and Full Value of \$4000, Assessable at 20 per Cent, Class 3B; Remainder at 33 1/3 Per Cent, Class 3.

Form 3 C.D. BILLS-BAYNE COMPANY, MINNEAPOLIS

Table with columns: IN WHOSE NAME ASSESSED, TO WHOM TRANSFERRED, DESCRIPTION OF PROPERTY, ASSESSOR'S VALUATION, EQUALIZED VALUES, VALUATIONS BY SCHOOL DISTRICTS AS EQUALIZED BY DEPARTMENT OF TAXATION, Rate and Tax Less Homestead Exemption, State Tax on Non-Homestead, TOTAL GENERAL TAX, SPECIAL TAXES, TOTAL TAXES, PAID, WHEN PAID, Number of Receipt, March Settlement 1945, June Settlement 1945, Penalty, November Settlement 1945, Penalty, Collections to First Monday in January 1946, Penalty, Delinquent on First Monday in January 1946, Total Delinquent Tax and Penalty, REMARKS.

State of Minnesota, State of Minnesota, State of Minnesota, State of Minnesota, State of Minnesota, State of Minnesota, State of Minnesota, State of Minnesota, State of Minnesota, State of Minnesota, State of Minnesota, State of Minnesota, State of Minnesota, State of Minnesota, State of Minnesota, State of Minnesota, State of Minnesota, State of Minnesota, State of Minnesota

Herman Shalberg, The Keystone Land Co., Lewis J. Lambert's, NW 1/4 of SE 1/4, NW 1/4 of SW 1/4, SE 1/4 of SE 1/4

Handwritten calculations and values: 282, 296, 321, 99, 107, 94, 963, 846, 888, 321, 321, 282, 297, 297

Handwritten tax values: 99, 1362, 30, 1392, 99, 1362, 30, 1392, 99, 1362, 30, 4086, 90, 4176

SOLD FOR TAXES

SOLD FOR TAXES

SOLD FOR TAXES

Assessment Roll and Tax List of Unplatted Real Property in the of
Unplatted Real Estate Assessed at 33 1/3 Per Cent of True and Full Value; Attached Machinery at 33 1/3 Per Cent of True and Full Value, Homesteads, up to True and Full Value of \$4000, Assessable at 20 per Cent, Class 3B; Remainder at 33 1/3 Per Cent, Class 3.

Table with columns: IN WHOSE NAME ASSESSED, TO WHOM TRANSFERRED, SUBDIVISION, ASSESSOR'S VALUATION, EQUALIZED VALUES, SOLD FOR TAXES. Includes handwritten entries for 'Nelo O. Olson' and 'Charlie John Magnus'.

Table with columns: VALUATIONS BY SCHOOL DISTRICTS AS EQUALIZED BY DEPARTMENT OF TAXATION, Rate and Tax Less Homestead Exemption, State Tax on Non-Homestead Exemption, TOTAL GENERAL TAX, SPECIAL TAXES, PAID, WHEN PAID, Number of Receipt, March Settlement 1945, June Settlement 1945, Penalty, November Settlement 1945, Collections to First Monday in January 1946, Delinquent on First Monday in January 1946, Total Delinquent Tax and Penalty, REMARKS. Includes handwritten entries for 'PAID IN FULL' and 'JUN 29 1945'.

Assessment Roll and Tax List of Unplatted Real Property in the of Unplatted Real Estate Assessed at 33 1/2 Per Cent of True and Full Value; Attached Machinery at 33 1/2 Per Cent of True and Full Value, Homesteads, up to True and Full Value of \$4000, Assessable at 20 per Cent, Class 3B; Remainder at 33 1/2 Per Cent, Class 3.

Table with columns: IN WHOSE NAME ASSESSED, TO WHOM TRANSFERRED, SUBDIVISION, ASSESSOR'S VALUATION, EQUALIZED VALUES, SOLD FOR TAXES. Includes handwritten entries for U.S. of America and Daniel J. Walsh.

Table with columns: VALUATIONS BY SCHOOL DISTRICTS AS EQUALIZED BY DEPARTMENT OF TAXATION, Rate and Tax Less Homestead Exemption, State Tax on Non-Homestead, TOTAL GENERAL TAX, SPECIAL TAXES, TOTAL TAXES, PAID, WHEN PAID, Number of Receipt, March Settlement 1945, June Settlement 1945, Penalty, November Settlement 1945, Collections to First Monday in January 1946, Delinquent on First Monday in January 1946, Total Delinquent Tax and Penalty, REMARKS. Includes handwritten entries for 1945 and 1946.

Assessment Roll and Tax List of Unplatted Real Property in the of Unplatted Real Estate Assessed at 33 1/2 Per Cent of True and Full Value; Attached Machinery at 33 1/2 Per Cent of True and Full Value, Homesteads, up to True and Full Value of \$4000, Assessable at 20 per Cent, Class 3B; Remainder at 33 1/2 Per Cent, Class 3.

Table with columns: IN WHOSE NAME ASSESSED, TO WHOM TRANSFERRED, DESCRIPTION OF PROPERTY, ASSESSOR'S VALUATION, EQUALIZED VALUES, and SOLD FOR TAXES. Includes handwritten entries for 'U. S. of America' and 'Mattie Krueger'.

Table with columns: VALUATIONS BY SCHOOL DISTRICTS AS EQUALIZED BY DEPARTMENT OF TAXATION, Rate and Tax Less Homestead Exemption, State Tax on Non-Homestead, TOTAL GENERAL TAX, SPECIAL TAXES, TOTAL TAXES, PAID, WHEN PAID, Number of Receipt, March Settlement 1945, June Settlement 1945, Penalty, November Settlement 1945, Collections to First Monday in January 1946, Delinquent on First Monday in January 1946, Total Delinquent Tax and Penalty, and REMARKS. Includes handwritten notes like 'Abatement \$27.32' and 'PAID IN FULL JUN 28 1945'.

Cass County, Minnesota, for Taxes for the Year 1944.

Assessment Roll and Tax List of Unplatted Real Property in the of Unplatted Real Estate Assessed at 33 1/2 Per Cent of True and Full Value; Attached Machinery at 33 1/2 Per Cent of True and Full Value. Homesteads, up to True and Full Value of \$4000, Assessable at 20 per Cent, Class 3H; Remainder at 33 1/2 Per Cent, Class 3.

24

Form 4 CD

Table with columns: IN WHOSE NAME ASSESSED, TO WHOM TRANSFERRED, SUBDIVISION, ACRES, and ASSESSOR'S VALUATION. Includes handwritten entries for U.S. of America and Hugh V. Norton.

Table with columns: VALUATION BY SCHOOL DISTRICTS AS EQUALIZED BY DEPARTMENT OF TAXATION, RATE AND TAX LESS HOMESTEAD EXEMPTION, STATE TAX ON NON-HOMESTEAD, TOTAL GENERAL TAX, SPECIAL TAXES, TOTAL TAXES, PAID, WHEN PAID, Number of Receipt, March Settlement 1945, June Settlement 1945, Penalty, November Settlement 1945, Collection to First Monday in January 1946, Delinquent on First Monday in January 1946, Total Delinquent Tax and Penalty, REMARKS.

Assessment Roll and Tax List of Unplatted Real Property in the of Unplatted Real Estate Assessed at 3 3/4 Per Cent of True and Full Value; Attached Machinery at 3 3/4 Per Cent of True and Full Value. Homesteads, up to True and Full Value of \$4000, Assessable at 20 per Cent, Class 3B; Remainder at 3 3/4 Per Cent, Class 3.

Table with columns: IN WHOSE NAME ASSESSED, TO WHOM TRANSFERRED, SUBDIVISION, No. School District, Indicate Homestead, ASSESSOR'S VALUATION (True and Full Value of Land, Structures & Improvements, Total True and Full Value of Land Including all Structures, etc.), EQUALIZED VALUES (Total Assessed Value of Land, Total Assessed Value of Land Including all Structures, etc.), SOLD FOR TAXES.

Table with columns: VALUATIONS BY SCHOOL DISTRICTS AS EQUALIZED BY DEPARTMENT OF TAXATION (District No., Rate, etc.), Rate and Tax Less Homestead Exemption, State Tax on Non-Homestead, TOTAL GENERAL TAX, SPECIAL TAXES, TOTAL TAXES, PAID, WHEN PAID, Number of Receipt, March Settlement 1945, June Settlement 1945, Penalty, November Settlement 1945, Collections to First Monday in January 1946, Delinquent on First Monday in January 1946, Total Delinquent Tax and Penalty, REMARKS.

Cass County, Minnesota, for Taxes for the Year 1944.

Assessment Roll and Tax List of Unplatted Real Property in the of Unplatted Real Estate Assessed at 33 1/2 Per Cent of True and Full Value; Attached Machinery at 33 1/2 Per Cent of True and Full Value, Homesteads, up to True and Full Value of \$4000, Assessable at 20 per Cent, Class 3B; Remainder at 33 1/2 Per Cent, Class 3.

Table with columns: IN WHOSE NAME ASSESSED, TO WHOM TRANSFERRED, SUBDIVISION, No. School District, Indicate Homestead, ASSESSOR'S VALUATION (True and Full Value of Land, Structures & Improvements, Total True and Full Value of Land), EQUALIZED VALUES (Total Assessed Value as Equalized by the Board of Review, Total Assessed Value as Equalized by the County Board, Total Assessed Value as Equalized by the Department of Taxation), SOLD FOR TAXES.

Table with columns: VALUATIONS BY SCHOOL DISTRICTS AS EQUALIZED BY DEPARTMENT OF TAXATION (District No., Rate, etc.), Rate and Tax Less Homestead Exemption, State Tax on Non-Homestead, TOTAL GENERAL TAX, SPECIAL TAXES, TOTAL TAXES, PAID, WHEN PAID (Month, Day, Year), Number of Receipt, March Settlement 1945, June Settlement 1945, Penalty, November Settlement 1945, Penalty, Collections to First Monday in January 1946, Penalty, Delinquent on First Monday in January 1946, Total Delinquent Tax and Penalty, REMARKS.

Cass County, Minnesota, for Taxes for the Year 1944.

Assessment Roll and Tax List of Unplatted Real Property in t
Unplatted Real Estate Assessed at 33 1/2 Per Cent of True and Full Value; Attached Machinery at 33 1/2 Per Cent of True and Full Value, Ho

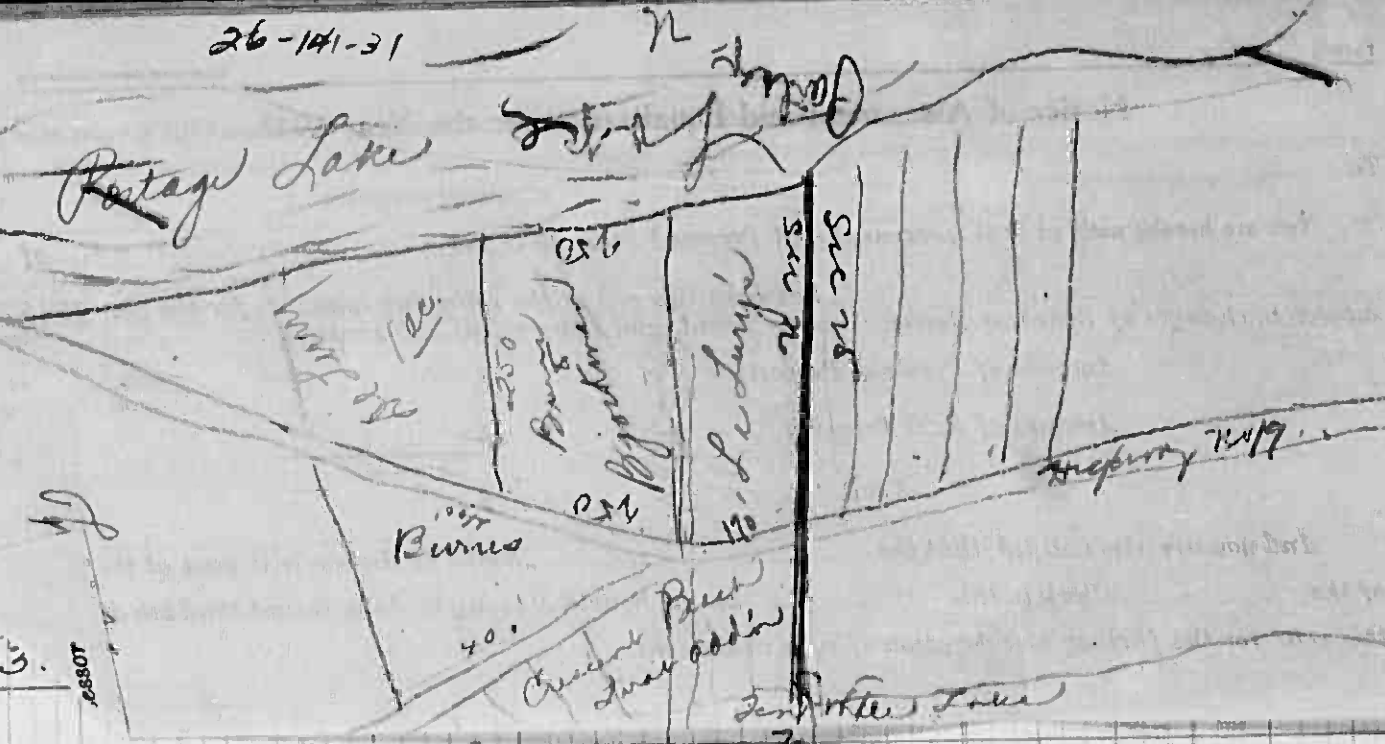


Table with columns: IN WHOSE NAME ASSESSED, TO WHOM TRANSFERRED, SUBDIVISION, Sec. or Lot, Town or Block, Range, Number of Acres of Land, No. School District, Indicate Homestead Yes or No. Rows include property owners like Ethel B. Vickers et al, Louis Krueger, State of Minnesota, Edmund C + Mathilda J. Thomas, Ethel B. Burns, Rolt E. De Lury, and Rolt E. De Lury - A.C. Kleinegger.

Table with columns: VALUATIONS BY SCHOOL DISTRICTS AS EQUALIZED BY DEPARTMENT OF TAXATION (District No., Rate, etc.), Rate and Tax Less Homestead Exemption, State Tax on Non-Homestead, TOTAL GENERAL TAX, SPECIAL TAXES, TOTAL TAXES, PAID, WHEN PAID (Month, Day, Year), Number of Receipt, March Settlement 1945, June Settlement 1945, Penalty, November Settlement 1945, Collections to First Monday in January 1946, Delinquent on First Monday in January 1946, Total Delinquent Tax and Penalty, REMARKS. Includes handwritten entries like 'PAID IN FULL JUN 26 1945' and 'Abatement # 2732'.

Cass County, Minnesota, for Taxes for the Year 1944.

Assessment Roll and Tax List of Unplatted Real Property 1. Unplatted Real Estate Assessed at 33 1/2 Per Cent of True and Full Value; Attached Machinery at 33 1/2 Per Cent of True and Full Value.

You are hereby notified that your Real and Personal Property in the following amounts for the year 1945 has been assessed at the following amounts by the Board of Assessors, County Board, and Department of Taxation. And you are also notified that the amount of Real Property subject to changes of Board of Revenue, County Board, and Department of Taxation. Total amount of Real Property subject to changes of Board of Revenue, County Board, and Department of Taxation. \$1,670.00. Board of Revenue will meet at the office of the County Board on the fourth Monday in June (being the 25th day) of this year for the further consideration of such assessment. Copy to the Clerk in this office.

Table with columns: IN WHOSE NAME ASSESSED, TO WHOM TRANSFERRED, DESCRIPTION OF PROPERTY, EQUALIZED VALUES, VALUATIONS BY SCHOOL DISTRICTS AS EQUALIZED BY DEPARTMENT OF TAXATION, Rate and Tax Less Homestead Exemption, State Tax on Non-Homestead, TOTAL GENERAL TAX, SPECIAL TAXES, TOTAL TAXES, PAID, WHEN PAID, Number of Receipt, March Settlement 1945, June Settlement 1945, Penalty, November Settlement 1945, Penalty, Collections to First Monday in January 1946, Penalty, Delinquent on First Monday in January 1946, Total Delinquent Tax and Penalty, REMARKS.

Assessment Roll and Tax List of Unplatted Real Property in the of Unplatted Real Estate Assessed at 33 1/2 Per Cent of True and Full Value; Attached Machinery at 33 1/2 Per Cent of True and Full Value. Homesteads, up to True and Full Value of \$1000, Assessable at 20 per Cent, Class 3B; Remainder at 33 1/2 Per Cent, Class 3.

Table with columns: IN WHOSE NAME ASSESSED, TO WHOM TRANSFERRED, DESCRIPTION OF PROPERTY, ASSESSOR'S VALUATION, EQUALIZED VALUES, VALUATIONS BY SCHOOL DISTRICTS AS EQUALIZED BY DEPARTMENT OF TAXATION, Rate and Tax Less Homestead Exemption, State Tax on Non-Homestead, TOTAL GENERAL TAX, SPECIAL TAXES, TOTAL TAXES, PAID, WHEN PAID, Number of Receipt, March Settlement 1945, June Settlement 1945, Penalty, November Settlement 1945, Collections to First Monday in January 1946, Delinquent on First Monday in January 1946, Total Delinquent Tax and Penalty, REMARKS.

Assessment Roll and Tax List of Unplatted Real Property in the
Unplatted Real Estate Assessed at 33 1/2 Per Cent of True and Full Value; Attached Machinery at 33 1/2 Per Cent of True and Full Value. Homesteads, up to True and Full Value of \$4000, Assessable at 20 per Cent, Class 3B; Remainder at 33 1/2 Per Cent, Class 3.

FORM 100 (1943) UNPLATTED REAL ESTATE

Table with columns: IN WHOSE NAME ASSESSED, TO WHOM TRANSFERRED, DESCRIPTION OF PROPERTY, ASSESSOR'S VALUATION (True and Full Value of Land, Structures & Improvements, Total True and Full Value of Land Including all Structures, Improvements and Machinery, Assessed Value of Homesteads up to \$4,000 at 20 per cent, Class 3B, Assessed Value of Remainder at 33 1/2 per cent, Class 3, Total Assessed Value of Land Including all Structures, Improvements and Machinery, Total Assessed Value as Equalized by the Board of Review, Total Assessed Value as Equalized by the Department of Taxation), SOLD FOR TAXES.

Cass County, Minnesota, for Taxes for the Year 1944.

Table with columns: VALUATIONS BY SCHOOL DISTRICTS AS EQUALIZED BY DEPARTMENT OF TAXATION (District No., Rate, Dollars), Rate and Tax Less Homestead Exemption, State Tax on Non-Homestead, TOTAL GENERAL TAX, SPECIAL TAXES, TOTAL TAXES, PAID, WHEN PAID (Month, Day, Year), Number of Receipt, March Settlement 1945, June Settlement 1945, Penalty, November Settlement 1945, Collections to First Monday in January 1946, Delinquent on First Monday in January 1946, Total Delinquent Tax and Penalty, REMARKS.

Assessment Roll and Tax List of Unplatted Real Property in the Unplatted Real Estate Assessed at 33 1/2 Per Cent of True and Full Value; Attached Machinery at 33 1/2 Per Cent of True and Full Value. Homesteads, up to True and Full Value of \$4000, Assessable at 20 per Cent, Class 3B; Remainder at 33 1/2 Per Cent, Class 3.

Table with columns: IN WHOSE NAME ASSESSED, TO WHOM TRANSFERRED, DESCRIPTION OF PROPERTY, ASSESSOR'S VALUATION, EQUALIZED VALUES, and SOLD FOR TAXES. Includes handwritten entries for various property owners like John W. & Anna M. Swanson and Merlin R. Wigatt.

Table with columns: VALUATIONS BY SCHOOL DISTRICTS AS EQUALIZED BY DEPARTMENT OF TAXATION, Rate and Tax Less Homestead Exemption, State Tax on Non-Homestead, TOTAL GENERAL TAX, SPECIAL TAXES, TOTAL TAXES, PAID, WHEN PAID, Number of Receipt, March Settlement 1945, June Settlement 1945, Penalty, November Settlement 1945, Collections to First Monday in January 1946, Delinquent on First Monday in January 1946, Total Delinquent Tax and Penalty, and REMARKS. Includes handwritten entries for tax payments and dates.

Assessment Roll and Tax List of Unplatted Real Property in the of Unplatted Real Estate Assessed at 33 1/2 Per Cent of True and Full Value; Attached Machinery at 33 1/2 Per Cent of True and Full Value. Homesteads, up to True and Full Value of \$4000, Assessable at 20 per Cent, Class 3B; Remainder at 33 1/2 Per Cent, Class 3.

Table with columns: IN WHOSE NAME ASSESSED, TO WHOM TRANSFERRED, SUBDIVISION, No. School District, Indicate Homestead, ASSESSOR'S VALUATION (True and Full Value of Lands, Structures & Improvements, etc.), EQUALIZED VALUES, and SOLD FOR TAXES.

Table with columns: VALUATIONS BY SCHOOL DISTRICTS AS EQUALIZED BY DEPARTMENT OF TAXATION, Rate and Tax Less Homestead Exemption, State Tax on Non-Homestead, TOTAL GENERAL TAX, SPECIAL TAXES, TOTAL TAXES, PAID, WHEN PAID, Number of Receipt, March Settlement 1945, June Settlement 1945, Penalty, November Settlement 1945, Collections to First Monday in January 1946, Delinquent on First Monday in January 1946, Total Delinquent Tax and Penalty, and REMARKS.

Cass County, Minnesota, for Taxes for the Year 1944.

Assessment Roll and Tax List of Unplatted Real Property in the ... of ... Unplatted Real Estate Assessed at 33 1/2 Per Cent of True and Full Value; Attached Machinery at 33 1/2 Per Cent of True and Full Value, Homesteads, up to True and Full Value of \$4000, Assessable at 20 per Cent, Class 3B; Remainder at 33 1/2 Per Cent, Class 3.

Table with columns: IN WHOSE NAME ASSESSED, TO WHOM TRANSFERRED, SUBDIVISION, ASSESSOR'S VALUATION, EQUALIZED VALUES, SOLD FOR TAXES. Includes handwritten entries for various property lots and owners like 'Genevieve Michels' and 'Luzetta Ruth Lorne'.

Table with columns: VALUATIONS BY SCHOOL DISTRICTS AS EQUALIZED BY DEPARTMENT OF TAXATION, Rate and Tax Less Homestead Exemption, State Tax on Non-Homestead, TOTAL GENERAL TAX, SPECIAL TAXES, TOTAL TAXES, PAID, WHEN PAID, Number of Receipt, March Settlement 1945, June Settlement 1945, Penalty, November Settlement 1945, Collections to First Monday in January 1946, Delinquent on First Monday in January 1946, Total Delinquent Tax and Penalty, REMARKS. Includes handwritten entries for tax amounts and payment dates.

Assessment Roll and Tax List of Unplatted Real Property in the ... of ... Unplatted Real Estate Assessed at 33 1/2 Per Cent of True and Full Value; Attached Machinery at 33 1/2 Per Cent of True and Full Value, Homesteads, up to True and Full Value of \$4000, Assessable at 20 per Cent, Class 3B; Remainder at 33 1/2 Per Cent, Class 3I

Table with columns: TO WHOM TRANSFERRED, DESCRIPTION OF PROPERTY, ASSESSOR'S VALUATION, EQUALIZED VALUES, SOLD FOR TAXES. Includes handwritten entries for Henry Rose, Everett Batcheller, U.S. of America, E.L. Batcheller, Edmund Johnson, P.W. Dease, C. Petrus Peterson, Wm. Shalmer, Ronald Clemens Eckman, and Alpha H. Miner.

Table with columns: VALUATIONS BY SCHOOL DISTRICTS AS EQUALIZED BY DEPARTMENT OF TAXATION, Rate and Tax Less Homestead Exemption, State Tax on Non-Homestead, TOTAL GENERAL TAX, SPECIAL TAXES, TOTAL TAXES, PAID, WHEN PAID, Number of Receipt, March Settlement 1945, June Settlement 1945, Penalty, November Settlement 1945, Collections to First Monday in January 1946, Delinquent on First Monday in January 1946, Total Delinquent Tax and Penalty, REMARKS. Includes handwritten entries for various districts and tax amounts.

Cass County, Minnesota, for Taxes for the Year 1944.

Assessment Roll and Tax List of Unplatted Real Property in the of Unplatted Real Estate Assessed at 33 1/3 Per Cent of True and Full Value; Attached Machinery at 33 1/3 Per Cent of True and Full Value. Homesteads, up to True and Full Value of \$4000, Assessable at 20 per Cent, Class 3B; Remainder at 33 1/3 Per Cent, Class 3.

Table with columns: IN WHOSE NAME ASSESSED, TO WHOM TRANSFERRED, SUBDIVISION, No. School District, Indicate Homestead, ASSESSOR'S VALUATION, EQUALIZED VALUES, and SOLD FOR TAXES.

Table with columns: VALUATIONS BY SCHOOL DISTRICTS AS EQUALIZED BY DEPARTMENT OF TAXATION, Rate and Tax Less Homestead Exemption, State Tax on Non-Homestead, TOTAL GENERAL TAX, SPECIAL TAXES, TOTAL TAXES, PAID, WHEN PAID, Number of Receipt, March Settlement 1945, June Settlement 1945, Penalty, November Settlement 1945, Collections to First Monday in January 1946, Delinquent on First Monday in January 1946, Total Delinquent Tax and Penalty, and REMARKS.

Cass County, Minnesota, for Taxes for the Year 1944.

Assessment Roll and Tax List of Unplatted Real Property in the ... of ... Unplatted Real Estate Assessed at 33 1/2 Per Cent of True and Full Value; Attached Machinery at 33 1/2 Per Cent of True and Full Value, Homesteads, up to True and Full Value of \$4000; Assessable, at 20 per Cent, Class 3B; Remainder at 33 1/2 Per Cent, Class 3.

Table with columns: IN WHOSE NAME ASSESSED, TO WHOM TRANSFERRED, DESCRIPTION OF PROPERTY, No. School District, Indicate Homestead, ASSESSOR'S VALUATION (True and Full Value of Land, Structures & Improvements, Total True and Full Value of Land Including all Structures, Improvements and Machinery, Assessed Value of Homesteads up to \$4,000 at 20 per cent Class 3B, Assessed Value of Remainder at 33 1/2 per cent Class 3, Total Assessed Value of Land Including all Structures, Improvements and Machinery, Total Assessed Value as Equalized by the Board of Review, Total Assessed Value as Equalized by the Department of Taxation), SOLD FOR TAXES.

Table with columns: VALUATIONS BY SCHOOL DISTRICTS AS EQUALIZED BY DEPARTMENT OF TAXATION (District No., District No., District No., District No., Rate, Rate, Rate, Rate), Rate and Tax Less Homestead Exemption, State Tax on Non-Homestead, TOTAL GENERAL TAX, SPECIAL TAXES, TOTAL TAXES, PAID, WHEN PAID, Number of Receipt, March Settlement 1945, June Settlement 1945, Penalty, November Settlement 1945, Penalty, Collections to First Monday in January 1946, Penalty, Delinquent on First Monday in January 1946, Total Delinquent Tax and Penalty, REMARKS.

Assessment Roll and Tax List of Unplatted Real Property in the of Unplatted Real Estate Assessed at 33 1/2 Per Cent of True and Full Value; Attached Machinery at 33 1/2 Per Cent of True and Full Value. Homesteads, up to True and Full Value of \$4000, Assessable at 20 per Cent, Class 3B; Remainder at 33 1/2 Per Cent, Class 3.

Table with columns: IN WHOSE NAME ASSESSED, TO WHOM TRANSFERRED, DESCRIPTION OF PROPERTY, ASSESSOR'S VALUATION, EQUALIZED VALUES, and SOLD FOR TAXES. Includes handwritten entries for Alvin Clarine and Uylel Strand.

Table with columns: VALUATIONS BY SCHOOL DISTRICTS AS EQUALIZED BY DEPARTMENT OF TAXATION, Rate and Tax Less Homestead Exemption, State Tax on Non-Homestead, TOTAL GENERAL TAX, SPECIAL TAXES, TOTAL TAXES, PAID, WHEN PAID, Number of Receipt, March Settlement 1945, June Settlement 1945, Penalty, November Settlement 1945, Collections to First Monday in January 1946, Delinquent on First Monday in January 1946, Total Delinquent Tax and Penalty, and REMARKS. Includes handwritten entries for Alvin Clarine and Uylel Strand.

Assessment Roll and Tax List of Unplatted Real Property in the
Unplatted Real Estate Assessed at 33 1/3 Per Cent of True and Full Value; Attached Machinery at 33 1/3 Per Cent of True and Full Value, Homesteads, up to True and Full Value of \$4000, Assessable at 20 per Cent, Class 3B; Remainder at 33 1/3 Per Cent, Class 3.

Form 4 CD

IN WHOSE NAME ASSESSED

TO WHOM TRANSFERRED

DESCRIPTION OF PROPERTY

Subdivision, Sec. or Lot, Town or Block, Range, Number of Acres of Land

Indicate Homestead Yes or No

ASSESSOR'S VALUATION

Table with columns: True and Full Value of Land, Structures & Improvements, True and Full Value of Machinery, Total True and Full Value of Land, Assessed Value of Homesteads, Assessed Value of Remainder, Total Assessed Value of Land, Total Assessed Value as Equalized by the Board of Review, Total Assessed Value as Equalized by the Department of Taxation.

SOLD FOR TAXES

EQUALIZED VALUES

Table with columns: Total Assessed Value as Equalized by the Board of Review, Total Assessed Value as Equalized by the Department of Taxation.

VALUATIONS BY SCHOOL DISTRICTS AS EQUALIZED BY DEPARTMENT OF TAXATION

Table with columns: District No., District Rate, District No., District Rate, Rate and Tax Less Homestead Exemption, State Tax on Non-Homestead, TOTAL GENERAL TAX.

Cass County, Minnesota, for Taxes for the Year 1944.

Main tax table with columns: PAID, WHEN PAID (Month Day Year), Number of Receipt, March Settlement 1945, June Settlement 1945, Penalty, November Settlement 1945, Collections to First Monday in January 1946, Delinquent on First Monday in January 1946, Total Delinquent Tax and Penalty, REMARKS.

Fred W + Jessie M. Reising

W. J. Weiss

Selford D + Laura Hanson

U. S. of America

U. S. of America

Ben R. Gardner

State of Minnesota

U. S. of America

U. S. of America

Ole Berg + Inez Berg

Agnes Jakoschi

Bessie Tracy Nelson

Alois Jakoschi

Ole Berg + Inez Berg

Walter S. + Magdalene H. Lisdie

Ole Berg + Inez Berg

Walter S. + Magdalene H. Lisdie

Ole Berg + Inez Berg

Cass County, Minnesota, for Taxes for the Year 1944.

Assessment Roll and Tax List of Unplatted Real Property in the of Unplatted Real Estate Assessed at 33 1/4 Per Cent of True and Full Value; Attached Machinery at 33 1/4 Per Cent of True and Full Value, Homesteads, up to True and Full Value of \$4000, Assessable at 20 per Cent, Class 3B; Remainder at 33 1/4 Per Cent, Class 3.

Form 4 CD STATE OF MINNESOTA, MINNEAPOLIS

Table with columns for 'DESCRIPTION OF PROPERTY', 'ASSESSOR'S VALUATION', 'EQUALIZED VALUES', 'VALUATIONS BY SCHOOL DISTRICTS AS EQUALIZED BY DEPARTMENT OF TAXATION', 'TOTAL GENERAL TAX', 'TOTAL TAXES', 'PAID', 'WHEN PAID', 'Number of Receipt', 'March Settlement 1945', 'June Settlement 1945', 'Penalty', 'November Settlement 1945', 'Penalty', 'Collections to First Monday in January 1946', 'Penalty', 'Delinquent on First Monday in January 1946', 'Total Delinquent Tax and Penalty', 'REMARKS'. Includes handwritten entries for Fred W. & Jessie M. Rising.

142-51

Cass County, Minnesota, for Taxes for the Year 1944.

Assessment Roll and Tax List of Unplatted Real Property in the of Unplatted Real Estate Assessed at 33 1/2 Per Cent of True and Full Value; Attached Machinery at 33 1/2 Per Cent of True and Full Value, Homesteads, up to True and Full Value of \$4000, Assessable at 20 per Cent, Class 3B; Remainder at 33 1/2 Per Cent, Class 3.

Table with columns: IN WHOSE NAME ASSESSED, TO WHOM TRANSFERRED, DESCRIPTION OF PROPERTY, ASSESSOR'S VALUATION, EQUALIZED VALUES, and SOLD FOR TAXES. Includes handwritten entries for various property owners like 'Bud Garrison' and 'Una D. Woolley'.

Table with columns: VALUATIONS BY SCHOOL DISTRICTS AS EQUALIZED BY DEPARTMENT OF TAXATION, Rate and Tax Less Homestead Exemption, State Tax on Non-Homestead, TOTAL GENERAL TAX, SPECIAL TAXES, TOTAL TAXES, PAID, WHEN PAID, Number of Receipt, March Settlement 1945, June Settlement 1945, Penalty, November Settlement 1945, Penalty, Collections to First Monday in January 1946, Penalty, Delinquent on First Monday in January 1946, Total Delinquent Tax and Penalty, and REMARKS.

Assessment Roll and Tax List of Unplatted Real Property in the of Unplatted Real Estate Assessed at 33 1/2 Per Cent of True and Full Value; Attached Machinery at 33 1/2 Per Cent of True and Full Value. Homesteads, up to True and Full Value of \$4000, Assessable at 20 per Cent, Class 3B; Remainder at 33 1/2 Per Cent, Class 3.

Table with columns: IN WHOSE NAME ASSESSED, TO WHOM TRANSFERRED, DESCRIPTION OF PROPERTY, ASSESSOR'S VALUATION, EQUALIZED VALUES, SOLD FOR TAXES. Includes handwritten entries for Andrew Magnusson, A.J. Thompson, Minnie De Florian, John B. De Florian, R.O. & H. Simonson, and Walter & Leslie Simonson.

Table with columns: VALUATIONS BY SCHOOL DISTRICTS AS EQUALIZED BY DEPARTMENT OF TAXATION, Rate and Tax Less Homestead Exemption, State Tax on Non-Homestead, TOTAL GENERAL TAX, SPECIAL TAXES, TOTAL TAXES, PAID, WHEN PAID, Number of Receipt, March Settlement 1945, June Settlement 1945, November Settlement 1945, Collections to First Monday in January 1946, Delinquent on First Monday in January 1946, Total Delinquent Tax and Penalty, REMARKS. Includes handwritten tax amounts and payment dates.

142-51

Assessment Roll and Tax List of Unplatted Real Property in the _____ of _____
Unplatted Real Estate Assessed at 33 1/3 Per Cent of True and Full Value; Attached Machinery at 33 1/3 Per Cent of True and Full Value, Homesteads, up to True and Full Value of \$4000, Assessable at 20 per Cent, Class 3B; Remainder at 33 1/3 Per Cent, Class 3.

Form 4 CD

Table with columns: IN WHOSE NAME ASSESSED, TO WHOM TRANSFERRED, DESCRIPTION OF PROPERTY, ASSESSOR'S VALUATION, EQUALIZED VALUES, and SOLD FOR TAXES. Includes handwritten entries for various property owners like 'Suerre Olsen' and 'Elsie Rapp'.

Table with columns: VALUATIONS BY SCHOOL DISTRICTS AS EQUALIZED BY DEPARTMENT OF TAXATION, Rate and Tax Less Homestead Exemption, State Tax on Non-Homestead, TOTAL GENERAL TAX, SPECIAL TAXES, TOTAL TAXES, PAID, WHEN PAID, Number of Receipt, March Settlement 1945, June Settlement 1945, Penalty, November Settlement 1945, Penalty, Collections to First Monday in January 1946, Penalty, Delinquent on First Monday in January 1946, Total Delinquent Tax and Penalty, and REMARKS. Includes handwritten notes on payments and penalties.

142-31

Assessment Roll and Tax List of Unplatted Real Property in the of Unplatted Real Estate Assessed at 33 1/2 Per Cent of True and Full Value; Attached Machinery at 33 1/2 Per Cent of True and Full Value, Homesteads, up to True and Full Value of \$4000, Assessable at 20 per Cent, Class 3B; Remainder at 33 1/2 Per Cent, Class 3.

Table with columns: IN WHOSE NAME ASSESSED, TO WHOM TRANSFERRED, DESCRIPTION OF PROPERTY, ASSESSOR'S VALUATION, EQUALIZED VALUES, and SOLD FOR TAXES. Includes handwritten entries for various property lots and owners like State of Minnesota, N.C. Bennett, Leonard Peterson, and Chas. Markenberg.

Table with columns: VALUATIONS BY SCHOOL DISTRICTS AS EQUALIZED BY DEPARTMENT OF TAXATION, SPECIAL TAXES, TOTAL TAXES, PAID, WHEN PAID, Number of Receipt, March Settlement 1945, June Settlement 1945, Penalty, November Settlement 1945, Penalty, Collections to First Monday in January 1946, Penalty, Delinquent on First Monday in January 1946, Total Delinquent Tax and Penalty, and REMARKS. Includes handwritten tax amounts and payment dates.

142-81

Assessment Roll and Tax List of Unplatted Real Property in the _____ of _____
 Unplatted Real Estate Assessed at 33 1/4 Per Cent of True and Full Value; Attached Machinery at 33 1/4 Per Cent of True and Full Value, Homesteads, up to True and Full Value of \$4000, Assessable at 20 per Cent, Class 3B; Remainder at 33 1/4 Per Cent, Class 3.

Form 4 CD

IN WHOSE NAME ASSESSED	TO WHOM TRANSFERRED	DESCRIPTION OF PROPERTY				No. School District	Indicate Homestead Yes or No	ASSESSOR'S VALUATION					EQUALIZED VALUES			SOLD FOR TAXES			
		SUBDIVISION	Sec. or Lot	Town or Block	Range			Number of Acres of Land Acres 1000ths	True and Full Value of Land, Structures and Improvements	STRUCTURES & IMPROVEMENTS		Total True and Full Value of Land, Structures, Improvements and Machinery	Assessed Value of Homesteads up to \$4,000 at 20 per cent Class 3B	Assessed Value of Remainder at 33 1/4 per cent Class 3	Total Assessed Value of Land, Structures, Improvements and Machinery		Total Assessed Value as Equalized by the Board of Review	Total Assessed Value as Equalized by the County Board	Total Assessed Value as Equalized by the Department of Taxation
										True and Full Value of Buildings and Other Structures	True and Full Value of Machinery Permanently Attached to Real Estate								
U. S. of America	<i>interest for Miss Chippewa Lake</i>	18 3/4				NE 1/4 of NE 1/4	13										5		
		2				NW 1/4 of NE 1/4													
		3				SW 1/4 of NE 1/4													
		4				SE 1/4 of NE 1/4													
		5																	
<i>Jay C. Andrews</i>		6				NE 1/4 of NW 1/4 <i>Lot 1</i>	15					20 19	21	7 6	7	7	6		
		7				NW 1/4 of NW 1/4													
		8				SW 1/4 of NW 1/4													
		9				SE 1/4 of NW 1/4													
		10																	
		11				NE 1/4 of SW 1/4													
		12				NW 1/4 of SW 1/4													
		13				SW 1/4 of SW 1/4													
		14				SE 1/4 of SW 1/4													
		15																	
		16				NE 1/4 of SE 1/4													
		17				NW 1/4 of SE 1/4													
		18				SW 1/4 of SE 1/4													
		19				SE 1/4 of SE 1/4													
		20																	

Cass County, Minnesota, for Taxes for the Year 1944.

VALUATIONS BY SCHOOL DISTRICTS AS EQUALIZED BY DEPARTMENT OF TAXATION				Rate and Tax Less Homestead ExemptionMills	State Tax on Non-HomesteadMills	TOTAL GENERAL TAX \$ cts.	SPECIAL TAXES					TOTAL TAXES \$ cts.	PAID Month Day Year	WHEN PAID Month Day Year	Number of Receipt	March Settlement 1945 \$ cts.	June Settlement 1945 \$ cts.	Penalty \$ cts.	November Settlement 1945 \$ cts.	Penalty \$ cts.	Collections to First Monday in January 1946 \$ cts.	Penalty \$ cts.	Delinquent on First Monday in January 1946 \$ cts.	Total Delinquent Tax and Penalty \$ cts.	REMARKS
District No.	District No.	District No.	District No.				District No.	District No.	District No.	District No.	District No.														

142-51

SR & Lot 7

Assessment Roll and Tax List of Unplatted Real Property in the of
Unplatted Real Estate Assessed at 33 1/2 Per Cent of True and Full Value; Attached Machinery at 33 1/2 Per Cent of True and Full Value. Homesteads, up to True and Full Value of \$4000, Assessable at 20 per Cent, Class 3B; Remainder at 33 1/2 Per Cent, Class 3.

Table with columns: IN WHOSE NAME ASSESSED, TO WHOM TRANSFERRED, DESCRIPTION OF PROPERTY, ASSESSOR'S VALUATION, EQUALIZED VALUES, SOLD FOR TAXES. Includes handwritten entries for Mary A. Ray, Edith M. Nephew, John Hanson, etc.

Table with columns: VALUATIONS BY SCHOOL DISTRICTS AS EQUALIZED BY DEPARTMENT OF TAXATION, Rate and Tax Less Homestead Exemption, State Tax on Non-Homestead, TOTAL GENERAL TAX, SPECIAL TAXES, PAID, WHEN PAID, Number of Receipt, March Settlement 1945, June Settlement 1945, Penalty, November Settlement 1945, Collections to First Monday in January 1946, Delinquent on First Monday in January 1946, Total Delinquent Tax and Penalty, REMARKS. Includes handwritten entries for #198, #81, #48, #55, #44, #42, #49, #381, #136, #572.

Cass County, Minnesota, for Taxes for the Year 1944.

Assessment Roll and Tax List of Unplatted Real Property in the of Unplatted Real Estate Assessed at 33 1/2 Per Cent of True and Full Value; Attached Machinery at 33 1/2 Per Cent of True and Full Value. Homesteads, up to True and Full Value of \$4000, Assessable at 20 per Cent, Class 3B; Remainder at 33 1/2 Per Cent, Class 3.

Table with columns: IN WHOSE NAME ASSESSED, TO WHOM TRANSFERRED, SUBDIVISION, ASSESSOR'S VALUATION (True and Full Value of Land, Structures & Improvements, etc.), EQUALIZED VALUES, and SOLD FOR TAXES.

Table with columns: VALUATIONS BY SCHOOL DISTRICTS AS EQUALIZED BY DEPARTMENT OF TAXATION, Rate and Tax Less Homestead Exemption, State Tax on Non-Homestead, TOTAL GENERAL TAX, SPECIAL TAXES, TOTAL TAXES, PAID, WHEN PAID, Number of Receipt, March Settlement 1945, June Settlement 1945, Penalty, November Settlement 1945, Penalty, Collections to First Monday in January 1946, Penalty, Delinquent on First Monday in January 1946, Total Delinquent Tax and Penalty, and REMARKS.

Assessment Roll and Tax List of Unplatted Real Property in the Unplatted Real Estate Assessed at 3 1/2 Per Cent of True and Full Value; Attached Machinery at 3 1/2 Per Cent of True and Full Value, Homesteads, up to True and Full Value of \$4000, Assesable at 20 per Cent, Class 3B; Remainder at 3 1/2 Per Cent, Class 3.

Table with columns: IN WHOSE NAME ASSESSED, TO WHOM TRANSFERRED, DESCRIPTION OF PROPERTY, ASSESSOR'S VALUATION, EQUALIZED VALUES, and SOLD FOR TAXES. Includes handwritten entries for various property owners like Robert E. + Mary J. LaBelle, Fred Lemke's estate, and Ed J. O. Stalde.

Table with columns: VALUATIONS BY SCHOOL DISTRICTS AS EQUALIZED BY DEPARTMENT OF TAXATION, Rate and Tax Less Homestead Exemption, State Tax on Non-Homestead, TOTAL GENERAL TAX, SPECIAL TAXES, TOTAL TAXES, PAID, WHEN PAID, Number of Receipt, March Settlement 1945, June Settlement 1945, Penalty, November Settlement 1945, Collections to First Monday in January 1946, Delinquent on First Monday in January 1946, Total Delinquent Tax and Penalty, and REMARKS. Includes handwritten notes like 'Abatement # 2793' and '2.82 Abated'.

Assessment Roll and Tax List of Unplatted Real Property in the of Cass County, Minnesota, for Taxes for the Year 1944.

Cass County, Minnesota, for Taxes for the Year 1944.

Table with columns for IN WHOSE NAME ASSESSED, TO WHOM TRANSFERRED, DESCRIPTION OF PROPERTY, ASSESSOR'S VALUATION, EQUALIZED VALUES, and SOLD FOR TAXES.

Table with columns for VALUATIONS BY SCHOOL DISTRICTS AS EQUALIZED BY DEPARTMENT OF TAXATION, Rate and Tax Less Homestead Exemption, State Tax on Non-Homestead, TOTAL GENERAL TAX, SPECIAL TAXES, TOTAL TAXES, PAID, WHEN PAID, Number of Receipt, March Settlement 1945, June Settlement 1945, Penalty, November Settlement 1945, Penalty, Collections to First Monday in January 1946, Penalty, Delinquent on First Monday in January 1946, Total Delinquent Tax and Penalty, and REMARKS.

Assessment Roll and Tax List of Unplatted Real Property in the of Unplatted Real Estate Assessed at 33 1/2 Per Cent of True and Full Value; Attached Machinery at 33 1/2 Per Cent of True and Full Value, Homesteads, up to True and Full Value of \$4000, Assessable at 20 per Cent, Class 3B; Remainder at 33 1/2 Per Cent; Class 3.

Table with columns: IN WHOSE NAME ASSESSED, TO WHOM TRANSFERRED, DESCRIPTION OF PROPERTY, ASSESSOR'S VALUATION, EQUALIZED VALUES, VALUATIONS BY SCHOOL DISTRICTS AS EQUALIZED BY DEPARTMENT OF TAXATION, Rate and Tax Less Homestead Exemption, State Tax on Non-Homestead, TOTAL GENERAL TAX, SPECIAL TAXES, TOTAL TAXES, PAID, WHEN PAID, Number of Receipt, March Settlement 1945, June Settlement 1945, Penalty, November Settlement 1945, Penalty, Collections to First Monday in January 1946, Penalty, Delinquent on First Monday in January 1946, Total Delinquent Tax and Penalty, REMARKS.

Assessment Roll and Tax List of Unplatted Real Property in the of Unplatted Real Estate Assessed at 33 1/2 Per Cent of True and Full Value; Attached Machinery at 33 1/2 Per Cent of True and Full Value, Homesteads, up to True and Full Value of \$4000, Assessable at 20 per Cent, Class 3B; Remainder at 33 1/2 Per Cent, Class 3.

Table with columns: IN WHOSE NAME ASSESSED, TO WHOM TRANSFERRED, DESCRIPTION OF PROPERTY, ASSESSOR'S VALUATION, EQUALIZED VALUES, VALUATIONS BY SCHOOL DISTRICTS AS EQUALIZED BY DEPARTMENT OF TAXATION, Rate and Tax Less Homestead Exemption, State Tax on Non-Homestead, TOTAL GENERAL TAX, SPECIAL TAXES, TOTAL TAXES, PAID, WHEN PAID, Number of Receipt, March Settlement 1945, June Settlement 1945, Penalty, November Settlement 1945, Penalty, Collections to First Monday in January 1946, Penalty, Delinquent on First Monday in January 1946, Total Delinquent Tax and Penalty, REMARKS.

Assessment Roll and Tax List of Unplatted Real Property in the of Unplatted Real Estate Assessed at 33 1/2 Per Cent of True and Full Value; Attached Machinery at 33 1/2 Per Cent of True and Full Value, Homesteads, up to True and Full Value of \$4000, Assessable at 20 per Cent, Class 3B; Remainder at 33 1/2 Per Cent, Class 3.

Table with columns: IN WHOSE NAME ASSESSED, TO WHOM TRANSFERRED, DESCRIPTION OF PROPERTY, ASSESSOR'S VALUATION, EQUALIZED VALUES, VALUATIONS BY SCHOOL DISTRICTS AS EQUALIZED BY DEPARTMENT OF TAXATION, Rate and Tax Less Homestead Exemption, State Tax on Non-Homestead, TOTAL GENERAL TAX, SPECIAL TAXES, TOTAL TAXES, PAID, WHEN PAID, Number of Receipt, March Settlement 1945, June Settlement 1945, Penalty, November Settlement 1945, Penalty, Collections to First Monday in January 1946, Penalty, Delinquent on First Monday in January 1946, Total Delinquent Tax and Penalty, REMARKS.

Ed Wald

Clifford B. Peterson, Arthur Olsen, Bernice J. Olsen

Theodore Nordgard

Armond Beyre

29 83 582 840 150 1572 206 14 320 305 513 539 882 150 1571 293 366 12 14

196 110 7 7 306 14 4404 04 4408

Assessment Roll and Tax List of Unplatted Real Property in the of
Unplatted Real Estate Assessed at 33 1/3 Per Cent of True and Full Value; Attached Machinery at 33 1/3 Per Cent of True and Full Value, Homesteads, up to True and Full Value of \$4000, Assessable at 20 per Cent, Class 3B; Remainder at 33 1/3 Per Cent, Class 3.

Table with columns: IN WHOSE NAME ASSESSED, TO WHOM TRANSFERRED, DESCRIPTION OF PROPERTY, ASSESSOR'S VALUATION (True and Full Value of Land, Structures, Machinery, etc.), EQUALIZED VALUES (Total Assessed Value, etc.), and SOLD FOR TAXES.

Cass County, Minnesota, for Taxes for the Year 1944.

Table with columns: VALUATIONS BY SCHOOL DISTRICTS AS EQUALIZED BY DEPARTMENT OF TAXATION, SPECIAL TAXES, TOTAL GENERAL TAX, PAID, WHEN PAID, Number of Receipt, March Settlement 1945, June Settlement 1945, November Settlement 1945, Collections to First Monday in January 1946, Delinquent on First Monday in January 1946, Total Delinquent Tax and Penalty, and REMARKS.

Assessment Roll and Tax List of Unplatted Real Property in the
Unplatted Real Estate Assessed at 33 1/3 Per Cent of True and Full Value; Attached Machinery at 33 1/3 Per Cent of True and Full Value, Homesteads, up to True and Full Value of \$4000, Assessable at 20 per Cent, Class 3B; Remainder at 33 1/3 Per Cent, Class 3.

Form 4 CD NAME DATA COMPANY, MINNEAPOLIS

Table with columns: IN WHOSE NAME ASSESSED, TO WHOM TRANSFERRED, DESCRIPTION OF PROPERTY, ASSESSOR'S VALUATION, EQUALIZED VALUES, SOLD FOR TAXES. Includes entries for R.G. Naustvold, Echel L. Peterson, R.G. Naustvold, Pearl Hinde, Fred Harkness, Chris J. Kanner, and State of Minnesota.

Table with columns: VALUATIONS BY SCHOOL DISTRICTS AS EQUALIZED BY DEPARTMENT OF TAXATION, Rate and Tax Less Homestead Exemption, State Tax on Non-Homestead, TOTAL GENERAL TAX, SPECIAL TAXES, TOTAL TAXES, PAID, WHEN PAID, Number of Receipt, March Settlement 1945, June Settlement 1945, Penalty, November Settlement 1945, Collections to First Monday in January 1946, Delinquent on First Monday in January 1946, Total Delinquent Tax and Penalty, REMARKS. Includes entries for districts 1 through 20.

Cass County, Minnesota, for Taxes for the Year 1944.

Assessment Roll and Tax List of Unplatted Real Property in the of Unplatted Real Estate Assessed at 33 1/2 Per Cent of True and Full Value; Attached Machinery at 33 1/2 Per Cent of True and Full Value. Homesteads, up to True and Full Value of \$4000, Assessable at 20 per Cent, Class 3B; Remainder at 33 1/2 Per Cent, Class 3.

Table with columns: IN WHOSE NAME ASSESSED, TO WHOM TRANSFERRED, SUBDIVISION, ASSESSOR'S VALUATION, EQUALIZED VALUES, and SOLD FOR TAXES. Includes handwritten entries for Russell & Ruby Engel, William Erickson, Clara Ripstein, Herman Fisher, George & Sylvia Jensen, Arthur & Anna C. Dallaire, L.M. & Cecy Lumbering, George A. & Sylvia Jensen, Fred Fisher, and G.M. Meland.

Table with columns: VALUATIONS BY SCHOOL DISTRICTS AS EQUALIZED BY DEPARTMENT OF TAXATION, Rate and Tax Less Homestead Exemption, State Tax on Non-Homestead, TOTAL GENERAL TAX, SPECIAL TAXES, TOTAL TAXES, PAID, WHEN PAID, Number of Receipt, March Settlement 1945, June Settlement 1945, Penalty, November Settlement 1945, Collections to First Monday in January 1946, Delinquent on First Monday in January 1946, Total Delinquent Tax and Penalty, and REMARKS. Includes handwritten entries for various districts and tax amounts.

Assessment Roll and Tax List of Unplatted Real Property in the
Unplatted Real Estate Assessed at 3 3/4 Per Cent of True and Full Value; Attached Machinery at 3 3/4 Per Cent of True and Full Value, Homesteads, up to True and Full Value of \$1000, Assessable at 20 per Cent, Class 3B; Remainder at 3 3/4 Per Cent, Class 3.

Table with columns: IN WHOSE NAME ASSESSED, TO WHOM TRANSFERRED, SUBDIVISION, No. School District, Indicate Homestead, True and Full Value of Land, Structures & Improvements, True and Full Value of Buildings and Other Structures, Total True and Full Value of Land and Buildings, Assessed Value of Homesteads, Assessed Value of Remainder, Total Assessed Value of Land, Total Assessed Value as Equalized by the Board of Review, Total Assessed Value as Equalized by the Department of Taxation, SOLD FOR TAXES.

Table with columns: VALUATIONS BY SCHOOL DISTRICTS AS EQUALIZED BY DEPARTMENT OF TAXATION, Rate and Tax Less Homestead Exemption, State Tax on Non-Homestead, TOTAL GENERAL TAX, SPECIAL TAXES, TOTAL TAXES, PAID, WHEN PAID, Number of Receipt, March Settlement 1945, June Settlement 1945, Penalty, November Settlement 1945, Penalty, Collections to First Monday in January 1946, Penalty, Delinquent on First Monday in January 1946, Total Delinquent Tax and Penalty, REMARKS.

Assessment Roll and Tax List of Unplatted Real Property in the

Unplatted Real Estate Assessed at 33 1/3 Per Cent of True and Full Value; Attached Machinery at 33 1/3 Per Cent of True and Full Value, Homesteads, up to True and Full Value of \$4000, Assessable at 20 per Cent, Class 3B; Remainder at 33 1/3 Per Cent, Class 3.

Table with columns: IN WHOSE NAME ASSESSED, TO WHOM TRANSFERRED, SUBDIVISION, No. School District, Indicate Homestead, True and Full Value of Land, Structures & Improvements, Total True and Full Value, Assessed Value of Homesteads, Assessed Value of Remainder, Total Assessed Value, Equalized Value, Total Assessed Value as Equalized by the Department of Taxation, SOLD FOR TAXES.

Table with columns: VALUATIONS BY SCHOOL DISTRICTS AS EQUALIZED BY DEPARTMENT OF TAXATION, Rate and Tax Less Homestead Exemption, State Tax on Non-Homestead, TOTAL GENERAL TAX, SPECIAL TAXES, TOTAL TAXES, PAID, WHEN PAID, Number of Receipt, March Settlement 1945, June Settlement 1945, November Settlement 1945, Penalty, Collections to First Monday in January 1946, Delinquent on First Monday in January 1946, Total Delinquent Tax and Penalty, REMARKS.

Assessment Roll and Tax List of Unplatted Real Property in the of Unplatted Real Estate Assessed at 33 1/3 Per Cent of True and Full Value; Attached Machinery at 33 1/3 Per Cent of True and Full Value, Homesteads, up to True and Full Value of \$4000, Assessable at 20 per Cent, Class 3B; Remainder at 33 1/3 Per Cent, Class 3;

Table with columns: IN WHOSE NAME ASSESSED, TO WHOM TRANSFERRED, DESCRIPTION OF PROPERTY, ASSESSOR'S VALUATION, EQUALIZED VALUES, VALUATIONS BY SCHOOL DISTRICTS AS EQUALIZED BY DEPARTMENT OF TAXATION, RATE AND TAX LESS HOMESTEAD EXEMPTION, STATE TAX ON NON-HOMESTEAD, TOTAL GENERAL TAX, SPECIAL TAXES, TOTAL TAXES, PAID, WHEN PAID, Number of Receipt, March Settlement 1945, June Settlement 1945, Penalty, November Settlement 1945, Penalty, Collections to First Monday in January 1946, Penalty, Delinquent on First Monday in January 1946, Total Delinquent Tax and Penalty, REMARKS.

Assessment Roll and Tax List of Unplatted Real Property in the of Unplatted Real Estate Assessed at 33 1/2 Per Cent of True and Full Value; Attached Machinery at 33 1/2 Per Cent of True and Full Value; Homesteads, up to True and Full Value of \$1000, Assessable at 20 per Cent, Class 3B; Remainder at 33 1/2 Per Cent, Class 3.

Table with columns: IN WHOSE NAME ASSESSED, TO WHOM TRANSFERRED, SUBDIVISION, ASSESSOR'S VALUATION, EQUALIZED VALUES, VALUATIONS BY SCHOOL DISTRICTS AS EQUALIZED BY DEPARTMENT OF TAXATION, Rate and Tax Less Homestead Exemption, State Tax on Non-Homestead, TOTAL GENERAL TAX, SPECIAL TAXES, TOTAL TAXES, PAID, WHEN PAID, Number of Receipt, March Settlement 1945, June Settlement 1945, Penalty, November Settlement 1945, Collections to First Monday in January 1946, Delinquent on First Monday in January 1946, Total Delinquent Tax and Penalty, REMARKS.

Cass County, Minnesota, for Taxes for the Year 1944.

Assessment Roll and Tax List of Unplatted Real Property in the of Unplatted Real Estate Assessed at 33 1/2 Per Cent of True and Full Value; Attached Machinery at 33 1/2 Per Cent of True and Full Value, Homesteads, up to True and Full Value of \$4000, Assessable at 20 per Cent, Class 3B; Remainder at 33 1/2 Per Cent, Class 3.

Table with columns: WHOSE NAME ASSESSED, TO WHOM TRANSFERRED, DESCRIPTION OF PROPERTY, ASSESSOR'S VALUATION, EQUALIZED VALUES, VALUATIONS BY SCHOOL DISTRICTS AS EQUALIZED BY DEPARTMENT OF TAXATION, RATE AND TAX LESS HOMESTEAD EXEMPTION, STATE TAX ON NON-HOMESTEAD, TOTAL GENERAL TAX, SPECIAL TAXES, TOTAL TAXES, PAID, WHEN PAID, Number of Receipt, March Settlement 1945, June Settlement 1945, Penalty, November Settlement 1945, Penalty, Collections to First Monday in January 1946, Penalty, Delinquent on First Monday in January 1946, Total Delinquent Tax and Penalty, REMARKS.

142-31

Ward and Grain Co. John Robinson & Herman Gregg

D.E. Hall

1392 1531

1392

14 198 2724 60

Handwritten calculations and notes at the bottom of the table.

Cass County, Minnesota, for Taxes for the Year 1944.

Assessment Roll and Tax List of Unplatted Real Property in the _____ of _____
Unplatted Real Estate Assessed at 33 1/3 Per Cent of True and Full Value; Attached Machinery at 33 1/3 Per Cent of True and Full Value; Homesteads, up to True and Full Value of \$1000, Assessable at 20 per Cent, Class 3B; Remainder at 33 1/3 Per Cent, Class 3.

Table with columns for: IN WHOSE NAME ASSESSED, TO WHOM TRANSFERRED, SUBDIVISION, ASSESSOR'S VALUATION, EQUALIZED VALUES, VALUATIONS BY SCHOOL DISTRICTS AS EQUALIZED BY DEPARTMENT OF TAXATION, SPECIAL TAXES, TOTAL TAXES, PAID, WHEN PAID, and REMARKS. Includes handwritten entries for Perry, Hall, and Moller.

142-31

Ind. Plat of Lot 1, Ind. Plat of Lot 2, Ind. Plat of Lot 3, Ind. Plat of Lot 4, Ind. Plat of Lot 5, Ind. Plat of Lot 6, Ind. Plat of Lot 7, Ind. Plat of Lot 8, Ind. Plat of Lot 9, Ind. Plat of Lot 10, Ind. Plat of Lot 11, Ind. Plat of Lot 12, Ind. Plat of Lot 13, Ind. Plat of Lot 14, Ind. Plat of Lot 15, Ind. Plat of Lot 16, Ind. Plat of Lot 17, Ind. Plat of Lot 18, Ind. Plat of Lot 19, Ind. Plat of Lot 20

Assessment Roll and Tax List of Unplatted Real Property in the _____ of _____
Unplatted Real Estate Assessed at 33 1/3 Per Cent of True and Full Value; Attached Machinery at 33 1/3 Per Cent of True and Full Value. Homesteads, up to True and Full Value of \$4000, Assessable at 20 per Cent, Class 3B; Remainder at 33 1/3 Per Cent, Class 3.

Table with columns: WHOSE NAME ASSESSED, TO WHOM TRANSFERRED, DESCRIPTION OF PROPERTY, ASSESSOR'S VALUATION, EQUALIZED VALUES, SOLD FOR TAXES. Includes handwritten entries for Leonard E. Tucker, W.E. + J.M. Diebel, Philip J. Jewell, W.E. Diebel, W.E. + J.M. Diebel, James E. Redekuhr, State of Minnesota, Philip Jewell, Philip + Dorothy Jewell, Anne Staude, Chas. Sloan, State of Minnesota, Philip Jewell + Dorothy Jewell, Anne Staude, U.S. of America.

Cass County, Minnesota, for Taxes for the Year 1944.

Table with columns: VALUATIONS BY SCHOOL DISTRICTS AS EQUALIZED BY DEPARTMENT OF TAXATION, Rate and Tax Less Homestead Exemption, State Tax on Non-Homestead, TOTAL GENERAL TAX, SPECIAL TAXES, PAID, WHEN PAID, Number of Receipt, March Settlement 1945, June Settlement 1945, November Settlement 1945, Collections to First Monday in January 1946, Delinquent on First Monday in January 1946, Total Delinquent Tax and Penalty, REMARKS. Includes handwritten entries for districts 1-20 and various tax amounts.

Assessment Roll and Tax List of Unplatted Real Property in the of Cass County, Minnesota, for Taxes for the Year 1944.

Table with columns: IN WHOSE NAME ASSESSED, TO WHOM TRANSFERRED, DESCRIPTION OF PROPERTY, ASSESSOR'S VALUATION, EQUALIZED VALUES, VALUATIONS BY SCHOOL DISTRICTS AS EQUALIZED BY DEPARTMENT OF TAXATION, Rate and Tax Less Homestead Exemption, State Tax on Non-Homestead, TOTAL GENERAL TAX, SPECIAL TAXES, TOTAL TAXES, PAID, WHEN PAID, Number of Receipt, March Settlement 1945, June Settlement 1945, Penalty, November Settlement 1945, Penalty, Collections to First Monday in January 1946, Penalty, Delinquent on First Monday in January 1946, Total Delinquent Tax and Penalty, REMARKS.

Assessment Roll and Tax List of Unplatted Real Property in the of Cass County, Minnesota, for Taxes for the Year 1944.

Table with columns: IN WHOSE NAME ASSESSED, TO WHOM TRANSFERRED, SUBDIVISION, ASSESSOR'S VALUATION, EQUALIZED VALUES, VALUATIONS BY SCHOOL DISTRICTS AS EQUALIZED BY DEPARTMENT OF TAXATION, Rate and Tax Less Exemption, State Tax on Non-Homestead, TOTAL GENERAL TAX, SPECIAL TAXES, TOTAL TAXES, PAID, WHEN PAID, Number of Receipt, March Settlement 1945, June Settlement 1945, Penalty, November Settlement 1945, Penalty, Collections to First Monday in January 1946, Delinquent on First Monday in January 1946, Total Delinquent Tax and Penalty, REMARKS.

Assessment Roll and Tax List of Unplatted Real Property in the of Cass County, Minnesota, for Taxes for the Year 1944.

Table with columns: IN WHOSE NAME ASSESSED, TO WHOM TRANSFERRED, SUBDIVISION, ASSESSOR'S VALUATION, EQUALIZED VALUES, VALUATIONS BY SCHOOL DISTRICTS AS EQUALIZED BY DEPARTMENT OF TAXATION, Rate and Tax Less Homestead Exemption, State Tax on Non-Homestead, TOTAL GENERAL TAX, SPECIAL TAXES, TOTAL TAXES, PAID, WHEN PAID, Number of Receipts, March Settlement 1945, June Settlement 1945, November Settlement 1945, Collections to First Monday in January 1946, Delinquent on First Monday in January 1946, Total Delinquent Tax and Penalty, REMARKS.

Assessment Roll and Tax List of Platted Real Property in the of

Platted Real Estate Assessed at 40 Per Cent of True and Full Value; Attached Machinery at 33 1/2 Per Cent of True and Full Value, Homesteads, up to True and Full Value of \$4000, Assessable at 25 Per Cent, Class 3C; Attached Machinery at 33 1/2 Per Cent, Class 3; Remainder at 40 Per Cent, Class 1.

Table with columns: IN WHOSE NAME ASSESSED, TO WHOM TRANSFERRED, SUBDIVISION, Lot, Block, No. School District, Indicate Homestead, ASSESSOR'S VALUATION (True and Full Value of Land, Structures & Improvements, etc.), EQUALIZED VALUES, and SOLD FOR TAXES.

Cass County, Minnesota, for Taxes for the Year 1944.

Table with columns: VALUATIONS BY SCHOOL DISTRICTS AS EQUALIZED BY DEPARTMENT OF TAXATION, Rate and Tax Less Exemption, State Tax on Non-Homestead, TOTAL GENERAL TAX, SPECIAL TAXES, TOTAL TAXES, PAID, WHEN PAID, Number of Receipts, March Settlement, June Settlement, November Settlement, Collections to First Monday in January, Delinquent on First Monday in January, Total Delinquent Tax and Penalty, and REMARKS.

Shingobee Island

And Part of Sh... of... Kebekona Springs... Chippewa for... of Lot 5

Assessment Roll and Tax List of Platted Real Property in the

Cass County, Minnesota, for Taxes for the Year 1944.

Platted Real Estate Assessed at 40 Per Cent of True and Full Value; Attached Machinery at 33 1/3 Per Cent of True and Full Value, Homesteads, up to True and Full Value of \$4000, Assessable at 25 Per Cent, Class 3C; Attached Machinery at 33 1/3 Per Cent, Class 3; Remainder at 40 Per Cent, Class 4.

Table with columns: IN WHOSE NAME ASSESSED, TO WHOM TRANSFERRED, ASSESSOR'S VALUATION, EQUALIZED VALUES, VALUATIONS BY SCHOOL DISTRICTS AS EQUALIZED BY DEPARTMENT OF TAXATION, Rate and Tax, State Tax on Non-Homestead, TOTAL GENERAL TAX, SPECIAL TAXES, PAID, WHEN PAID, Number of Receipt, March Settlement 1945, June Settlement 1945, Penalty, November Settlement 1945, Collections to First Monday in January 1946, Delinquent on First Monday in January 1946, Total Delinquent Tax and Penalty, REMARKS.

Assessment Roll and Tax List of Platted Real Property in the of Cass County, Minnesota, for Taxes for the Year 1944.

Shingobee Island Aud. Plat of Lot 5 Aud. Plat of Lot 7

Table with columns: UN*WHOSE NAME ASSESSED, TO WHOM TRANSFERRED, SUBDIVISION, Lot Block, No. School District, Indicate Home-stand Yes or No, True and Full Value of Land, STRUCTURES & IMPROVEMENTS, ASSESSOR'S VALUATION, EQUALIZED VALUES, SOLD FOR TAXES.

Table with columns: VALUATIONS BY SCHOOL DISTRICTS AS EQUALIZED BY DEPARTMENT OF TAXATION, Rate and Tax Less Homestead Exemption, State Tax on Non-Homestead, TOTAL GENERAL TAX, SPECIAL TAXES, TOTAL TAXES, PAID, WHEN PAID, Number of Receipt, March Settlement 1945, June Settlement 1945, November Settlement 1945, Collections to First Monday in January 1946, Delinquent on First Monday in January 1946, Total Delinquent Tax and Penalty, REMARKS.

Chippena Point Little Bumea Beach

Assessment Roll and Tax List of Platted Real Property in the of Cass County, Minnesota, for Taxes for the Year 1944.

Table with columns: IN WHOSE NAME ASSESSED, TO WHOM TRANSFERRED, SUBDIVISION, Lot, Block, No. School District, Indicate Homestead, ASSESSOR'S VALUATION, EQUALIZED VALUES, VALUATIONS BY SCHOOL DISTRICTS AS EQUALIZED BY DEPARTMENT OF TAXATION, Rate and Tax Less Homestead Exemption, State Tax on Non-Homestead, TOTAL GENERAL TAX, SPECIAL TAXES, TOTAL TAXES, PAID, WHEN PAID, Number of Receipt, March Settlement 1945, June Settlement 1945, Penalty, November Settlement 1945, Penalty, Collections to First Monday in January 1946, Penalty, Delinquent on First Monday in January 1946, Total Delinquent Tax and Penalty, REMARKS.

And. Plat of S 1/2 of Sec. 4 & Lot 7, And. Plat of Lot Chippewa Point, And. Plat of Lot Chippewa Point

Cityway, Bay, Ball's 1st Add'n. - Ascent Beach, 1st Breezy, Vitclie Gumee Beach

Assessment Roll and Tax List of Platted Real Property in the of Cass County, Minnesota, for Taxes for the Year 1944.

Cass County, Minnesota, for Taxes for the Year 1944.

Table with columns for Assessor's Valuation, Equalized Values, School Districts, and Taxes. Includes handwritten entries for property owners like E. J. Moore, Mrs. Eleanor Hagelbach, and Nathaniel C. Bennett. Includes sub-headers for 'IN WHOSE NAME ASSESSED', 'TO WHOM TRANSFERRED', 'DESCRIPTION OF PROPERTY', 'ASSESSOR'S VALUATION', 'EQUALIZED VALUES', 'VALUATIONS BY SCHOOL DISTRICTS', 'SPECIAL TAXES', 'TOTAL GENERAL TAX', 'PAID', 'WHEN PAID', 'Number of Receipt', 'March Settlement', 'June Settlement', 'Penalty', 'November Settlement', 'Penalty', 'Collections to First Monday in January 1946', 'Penalty', 'Delinquent on First Monday in January 1946', 'Total Delinquent Tax and Penalty', and 'REMARKS'.

Assessment Roll and Tax List of Platted Real Property in the _____ of _____

Cass County, Minnesota, for Taxes for the Year 1944.

Platted Real Estate Assessed at 40 Per Cent of True and Full Value; Attached Machinery at 33 1/3 Per Cent of True and Full Value, Homesteads, up to True and Full Value of \$1000, Assessable at 25 Per Cent, Class 3C; Attached Machinery at 33 1/3 Per Cent, Class 3; Remainder at 40 Per Cent, Class 3.

Table with columns: IN WHOSE NAME ASSESSED, TO WHOM TRANSFERRED, DESCRIPTION OF PROPERTY, ASSESSOR'S VALUATION, EQUALIZED VALUES, VALUATIONS BY SCHOOL DISTRICTS AS EQUALIZED BY DEPARTMENT OF TAXATION, Rate and Tax Less Homestead Exemption, State Tax on Non-Homestead, TOTAL GENERAL TAX, SPECIAL TAXES, TOTAL TAXES, PAID, WHEN PAID, Number of Receipt, March Settlement 1945, June Settlement 1945, Penalty, November Settlement 1945, Penalty, Collections to First Monday in January 1945, Penalty, Delinquent on First Monday in January 1946, Total Delinquent Tax and Penalty, REMARKS.

Assessment Roll and Tax List of Platted Real Property in the _____ of _____

Cass County, Minnesota, for Taxes for the Year 1944.

Platted Real Estate Assessed at 40 Per Cent of True and Full Value; Attached Machinery at 33 1/3 Per Cent of True and Full Value, Homesteads, up to True and Full Value of \$4000, Assessable at 25 Per Cent, Class 3C; Attached Machinery at 33 1/3 Per Cent, Class 3; Remainder at 40 Per Cent, Class 4.

Table with columns for Description of Property, Assessor's Valuation, Equalized Values, School District Valuations, Taxes (General, Special, Total), and Remarks. Includes handwritten entries for 'Wa-Ba-Ta-Me-Beef' and 'U. S. of America'.

Assessment Roll and Tax List of Platted Real Property in the _____ of _____

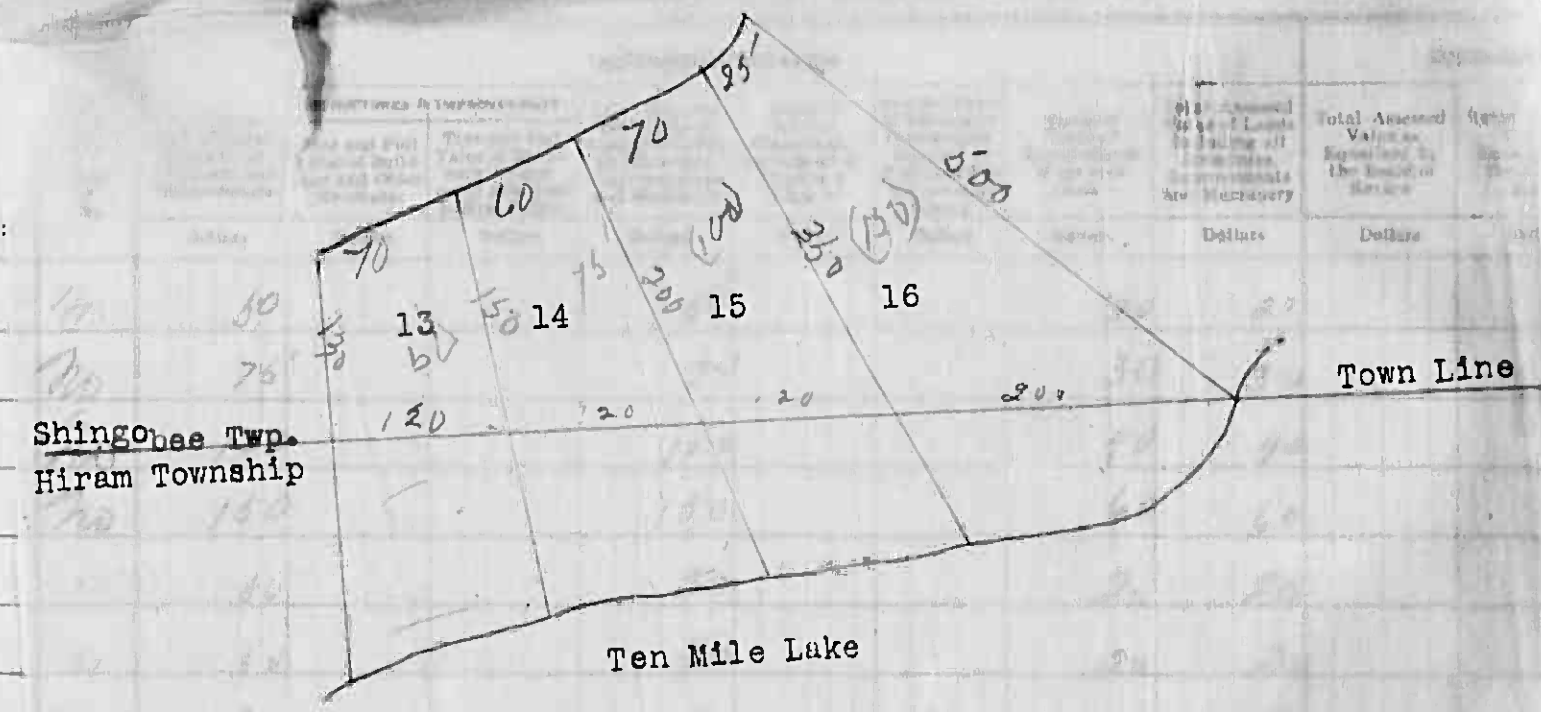
Platted Real Estate Assessed at 40 Per Cent of True and Full Value; Attached Machinery at 33 1/2 Per Cent of True and Full Value; Homesteads, up to True and Full Value of \$4000, Assessable at 25 Per Cent, Class 3C; Attached Machinery at 33 1/2 Per Cent, Class 3; Remainder at 40 Per Cent, Class 4

IN WHOSE NAME ASSESSED	TO WHOM TRANSFERRED	DESCRIPTION OF PROPERTY	School District	Indicate Homestead Yes or No	ASSESSOR'S VALUATION						EQUALIZED VALUES			SOLD FOR TAXES	VALUATIONS BY SCHOOL DISTRICTS AS EQUALIZED BY DEPARTMENT OF TAXATION				Rate and Tax Less Homestead Exemption	State Tax on Non-Homestead	TOTAL GENERAL TAX	TOTAL TAXES	PAID	WHEN PAID	Number of Receipt	March Settlement 1945	June Settlement 1945	Penalty 1945	November Settlement 1945	Penalty 1945	Collections to First Monday in January 1946	Penalty 1946	Delinquent on First Monday in January 1946	Total Delinquent Tax and Penalty	REMARKS				
					True and Full Value of Land Exclusive of Structures and Improvements	STRUCTURES & IMPROVEMENTS	True and Full Value of Land Including Structures and Other Improvements	Assessed Value of Homesteads up to \$4,000 at 25 per cent Class 3C	Assessed Value of Machinery Permanently Attached to Real Estate at 33 1/2 per cent Class 3	Assessed Value of Remainder at 40 per cent Class 4	Total Assessed Value of Land Including all Structures, Improvements and Machinery	Total Assessed Value as Equalized by the Board of Review	Total Assessed Value as Equalized by the County Board		Total Assessed Value as Equalized by the Department of Taxation	District No.	District No.	District No.																		District No.	District Rate	District Rate	District Rate
G. N. Meland		Subdivision 3 1/2 ac of Lot 1 - W of Hwy Sec 26-142-3	5-70		30		30		12	12			1	12			190	04	194	04	194		PAID IN FULL	JUN 28 1945															
"			"		30		30		12	12			2	12			190	04	194	04	194		PAID IN FULL	JUN 28 1945															
"			"		30		30		12	12			3	12			190	04	194	04	194		PAID IN FULL	JUN 28 1945															
"			"		30		30		12	12			4	12			190	04	194	04	194		PAID IN FULL	JUN 28 1945															
"			"		30		30		12	12			5	12			190	04	194	04	194		PAID IN FULL	JUN 28 1945															
"			"		30		30		12	12			6	12			190	04	194	04	194		PAID IN FULL	JUN 28 1945		1940													
"			"		30		30		12	12			7	12			190	04	194	04	194		PAID IN FULL	JUN 28 1945															
"			"		30		30		12	12			8	12			190	04	194	04	194		PAID IN FULL	JUN 28 1945															
"			"		30		30		12	12			9	12			190	04	194	04	194		PAID IN FULL	JUN 28 1945															
"			"		30		30		12	12			10	12			190	04	194	04	194		PAID IN FULL	JUN 28 1945															
Fred Fisher			"		30		30		12	12			11	12			190	04	194	04	194		SOLD FOR TAXES	JUN 1 1945	5922		388												
"			"		30		30		12	12			12	12			190	04	194	04	194		SOLD FOR TAXES	JUN 1 1945															
Victor Muller			"		50	170	220	55		55			13	55			868		868		868		PAID IN FULL	OCT 13 1945	10437		868	30											
Fred Fisher			"		30		30		12	12			14	12			190	04	194	04	194		SOLD FOR TAXES	JUN 1 1945															
"			"		30		30		12	12			15	12			190	04	194	04	194		SOLD FOR TAXES	JUN 1 1945	5922		582												
"			"		30		30		12	12			16	12			190	04	194	04	194		SOLD FOR TAXES	JUN 1 1945															
Hilding Johnson			"		30		30		12	12			17	12			190	04	194	04	194		PAID IN FULL	MAY 12 1945															
"			"		30		30		12	12			18	12			190	04	194	04	194		PAID IN FULL	MAY 12 1945	5288		1496												
Hilding & Jennette Johnson			"		52	192	244	61		61			19	61			962		962		962		PAID IN FULL	MAY 12 1945															
"			"		30		30	8		8			20	8			126		126		126		PAID IN FULL	MAY 12 1945															
					642	362	1004	124		328			14	124			5186	68	5254		5254																		

Assessment Roll and Tax List of Platted Real Property in the

Platted Real Estate Assessed at 40 Per Cent of True and Full Value; Attached Machinery at 33 1/3 Per Cent of True and Full Value, Ho...

IN WHOSE NAME ASSESSED	TO WHOM TRANSFERRED	DESCRIPTION OF PROPERTY	Lot	Block
<i>William E. Eibenberry, Ollie R. Kridelbaugh</i>		<i>Chariton Beach, Lot 3 - Sec. 34-141-31</i>		
<i>Elsie L. Gookin</i>		<i>Lot part of lot 13 lying N of P. line of S. 141 Page 31</i>	13	14
<i>Ollie R. Kridelbaugh</i>			15	16
<i>William E. Eibenberry</i>			17	
			18	
<i>Helen O. Reese</i>			19	
<i>William E. Eibenberry</i>			20	
			21	
<i>William E. Eibenberry</i>	<i>George E. + Merrill E. Westons</i>		22	
<i>Elsie L. Gookin</i>			23	
<i>William E. Eibenberry</i>			24	
<i>Helen O. Reese</i>			25	
<i>Elsie L. Gookin</i>	<i>Wm 5. Elizabeth S Profner,</i>	<i>Outlet A</i>	20	20
<i>William E. Eibenberry</i>	<i>Basel G. Siefner,</i>	<i>" B</i>	20	20



Lots 13 - 14 - 15 - 16 Chariton Beach

865 865 3410 3410

CLASS	SOLD FOR TAXES	VALUATIONS BY SCHOOL DISTRICTS AS EQUALIZED BY DEPARTMENT OF TAXATION				Rate and Tax Less Homestead Exemption	State Tax on Non-Homestead	TOTAL GENERAL TAX	SPECIAL TAXES				TOTAL TAXES	PAID	WHEN PAID	Number of Receipt	March Settlement 1945	June Settlement 1945	Penalty	November Settlement 1945	Penalty	Collections to First Monday in January 1946	Penalty	Delinquent on First Monday in January 1946	Total Delinquent Tax and Penalty	REMARKS		
		District No. 1	District No. 2	District No. 3	District No. 4				\$	cts.	\$	cts.															\$	cts.
1		20				316	06	322	1	PAID IN FULL	JUN 27 1945	7628	322	✓														
2		30				472	08	480	2	PAID IN FULL	JUN 28 1945	7629	480	✓														
3		40				630	12	642	3	PAID IN FULL	JUN 27 1945	7628	642	✓														
4		60				946	19	964	4	PAID IN FULL	MAY 22 1945	4413	964	✓														
5		20				316	06	322	5	PAID IN FULL	JUL 11 1945	9254	322	✓	05													
6		20				316	06	322	6	PAID IN FULL	APR 4 1945	3630	322	✓														
7		20				316	06	322	7	PAID IN FULL	JUN 27 1945	7628	322	✓														
8		20				316	06	322	8	PAID IN FULL	JUL 11 1945	9254	322	✓	05													
9		20				316	06	322	9	PAID IN FULL	APR 4 1945	3630	322	✓														
10		20				316	06	322	10	PAID IN FULL	MAY 22 1945	4413	322	✓														
11		20				316	06	322	11	PAID IN FULL	MAY 18 1945	4759	322	✓														
12		20				316	06	322	12	PAID IN FULL	JUL 11 1945	9254	322	✓	05													
13		20				316	06	322	13	PAID IN FULL	APR 4 1945	3630	322	✓														
14		8				126	02	128	14	PAID IN FULL	MAY 18 1945	4759	128	✓														
15		8				126	02	128	15	PAID IN FULL	JUN 27 1945	7628	128	✓														
16									16																			
17									17																			
18									18																			
19									19																			
20									20																			

Page Total 14 346 3460 102 Grand Total 14 880 234820 260 14,890

Page Total 5562 Grand Total 237426

Assessment Roll and Tax List of Platted Real Property in the of Cass County, Minnesota, for Taxes for the Year 1944.

Platted Real Estate Assessed at 40 Per Cent of True and Full Value; Attached Machinery at 33 1/3 Per Cent of True and Full Value. Homesteads, up to True and Full Value of \$4000, Assessable at 25 Per Cent, Class 3C; Attached Machinery at 33 1/3 Per Cent, Class 3; Remainder at 40 Per Cent, Class 4.

Table with columns: IN WHOSE NAME ASSESSED, TO WHOM TRANSFERRED, SUBDIVISION, Lot, Block, No. School District, Indicate Homestead, True and Full Value of Land, Structures & Improvements, ASSESSOR'S VALUATION, EQUALIZED VALUES, SOLD FOR TAXES.

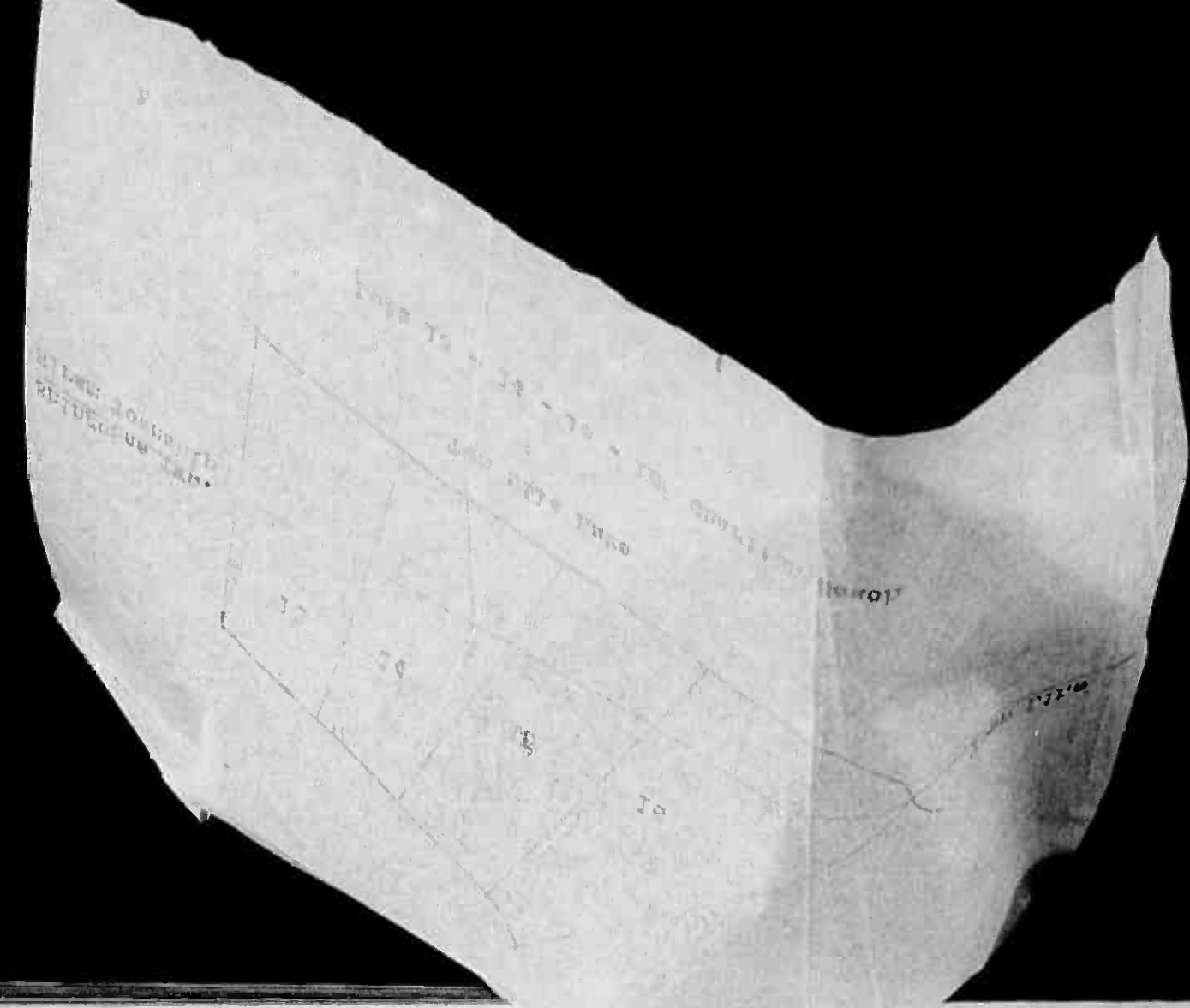
Page Total

Grand Total

Table with columns: VALUATIONS BY SCHOOL DISTRICTS AS REQUIRED BY DEPARTMENT OF TAXATION, Rate and Tax Less Homestead Exemption, State Tax on Non-Homestead, TOTAL GENERAL TAX, SPECIAL TAXES, PAID, WHEN PAID, Number of Receipt, March Settlement 1945, June Settlement 1945, November Settlement 1945, Collections to First Monday in January 1946, Delinquent on First Monday in January 1946, Total Delinquent Tax and Penalty, REMARKS.

Page Total

Grand Total



Assessment Roll and Tax List of Platted Real Property in the _____ of _____, Minnesota. Platted Real Estate Assessed at 40 Per Cent of True and Full Value; Attached Machinery at 33 1/2 Per Cent of True and Full Value. Homesteads, up to True and Full Value of \$4000, Assessable at 25 Per Cent, Class 3C; Attached Machinery at 33 1/2 Per Cent, Class 3; Remainder at 40 Per Cent, Class 4.

Cass County, Minnesota, for Taxes for the Year 1944.

IN WHOSE NAME ASSESSED	TO WHOM TRANSFERRED	DESCRIPTION OF PROPERTY		No. School District	Indicate Homestead Yes or No	ASSESSOR'S VALUATION					EQUALIZED VALUES			SOLD FOR TAXES	VALUATIONS BY SCHOOL DISTRICTS AS EQUALIZED BY DEPARTMENT OF TAXATION				Rate and Tax Less Homestead Exemption	State Tax on Non-Homestead	TOTAL GENERAL TAX	SPECIAL TAXES				TOTAL TAXES	PAID	WHEN PAID	Number of Receipt	March Settlement 1945	June Settlement 1945	Penalty	November Settlement 1945	Penalty	Collections to First Monday in January 1946	Penalty	Delinquent on First Monday in January 1946	Total Delinquent Tax and Penalty	REMARKS
		Subdivision	Lot			Block	True and Full Value of Land Exclusive of Structures and Improvements	STRUCTURES & IMPROVEMENTS	Total True and Full Value of Land Including all Structures, Improvements and Machinery	Assessed Value of Homesteads up to \$4,000 at 25 per cent Class 3C	Assessed Value of Machinery Permittedly Attached to Real Estate at 33 1/2 per cent Class 3	Assessed Value of Remainder at 40 per cent Class 4	Total Assessed Value of Land including all Structures, Improvements and Machinery		Total Assessed Value as Equalized by the Board of Review	Total Assessed Value as Equalized by the County Board	Total Assessed Value as Equalized by the Department of Taxation	District No. Rate				District No. Rate	District No. Rate	District No. Rate	\$ cts.														
	Lower addition to village of Walker																																						
	Transferred to Village of Walker Ordinance #91																																						

