

ASSESSMENT & TAX LIST - 1902
Salem

SUMMARY OF TAX COLLECTION

Original Levy	- - - - -	\$ 2413.88
Additions	- - - - -	\$ 22.92
		\$ 2436.80
Abatements	- - - - -	\$ 22.92
		\$ 2413.88

COLLECTIONS

March Settlement	- - - - -	\$ 536.46
June Settlement	- - - - -	\$ 692.94
November Settlement	- - - - -	\$ 460.67
January Settlement	- - - - -	\$ 5.10
		\$ 1695.17
Over Collected	- - - - -	\$
Under Collected	- - - - -	\$
Delinquent	- - - - -	\$ 718.69
Total	- - - - -	\$ 2413.88

COLLECTIONS OF TAXES OF 1962

Town OF Salem

CASS COUNTY, MINNESOTA

FUNDS	MARCH SETTLEMENT 1962	JUNE SETTLEMENT 1962	NOV. SETTLEMENT 1962	Amount Collected from Nov. 1962 to First Monday in Jan. 1963	REDUCTIONS	Total Reductions and Collected	BALANCE UNCOLLECTED	ADDITIONS	Total Uncollected to First Monday in January, 1963
State-Non-Homestead	1568	806	899	—					
State-Homestead	1526	2249	1427	16					
County Revenue	6152	8680	5512	60					
County Road and Bridge	3837	5413	3437	37					
County Welfare	9541	13462	8548	93					
County Bond and Interest	2622	3700	2049	26					
PERA	1015	1432	909	10					
C. N. Bldg	175	246	157	02					
Town Revenue	384	542	345	04					
Town Road and Bridge	1918	2707	1719	19					
Town State Loan	1055	1489	945	10					
School Local 1 Mill									
School Special	7674	5739	5326	75					
School State Loan	13255								
Deficiency	13255	18702	11875	129					
Tuition									
Transportation									
C. O.	2574	3632	2307	25					
ev sup	70	100	63	01					
agr adm	96	135	86	01					
Temp	184	260	165	02					
	53646	69294	46069	510					

	School District No.	LOCAL 1 MILL	SPECIAL	Agency STATE LOAN	C O	Reg	TOTALS
MARCH SETTLEMENT							
	Un Na		7674	13255	2574		23503
	Totals		7674	13255	2574		23503
JUNE SETTLEMENT							
	Un Na		5087	17576	3413		26076
	Un Na		652	1126	219		1997
Totals		5739	18702	3632		28073	
NOVEMBER SETTLEMENT							
	Un Na		1548	5349	1039		7936
	Un Na		3778	6526	1268		11572
Totals		5326	11875	2307		17508	
NOVEMBER 10 JANUARY							
	Un Na		75	129	25		229
	Totals		75	129	25		229
ADDITIONS							
	Totals						
REDUCTIONS							
	Totals						

Real Estate

Assessment Roll and Tax List of Real Property in the Town of Salem

Form 300 MILLER-DAVIS CO., MINNEAPOLIS

Cass County, Minnesota, for Taxes for the Year 1962.

Table with columns: IN WHOSE NAME ASSESSED, DESCRIPTION OF PROPERTY, TRUE AND FULL VALUATIONS, ASSESSED VALUATIONS, and FINAL EQUALIZED VALUE. Includes handwritten entries for property owners like Robert V. and Gladys A. Bullock.

Table with columns: SOLD FOR TAXES, VALUATIONS BY SCHOOL DISTRICTS AS EQUALIZED BY DEPARTMENT OF TAXATION, TAX INCLUDING STATE HOMESTEAD, SPECIAL TAXES, TOTAL TAXES, PAID, WHEN PAID, Number of Receipt, March Settlement 1963, June Settlement 1963, November Settlement 1963, Penalty, Collections to First Monday in January 1964, Delinquent on First Monday in January 1964, Total Delinquent Tax and Penalty, REMARKS.

Assessment Roll and Tax List of Real Property in the Town of Salem

Form 500 MILLER-DAVIS CO., MINNEAPOLIS

* Indicate Type of Property: R-Residential, C-Commercial, I-Industrial, U-Utility, F-Farm, L-Lakeshore, T-Timber, M-Mineral

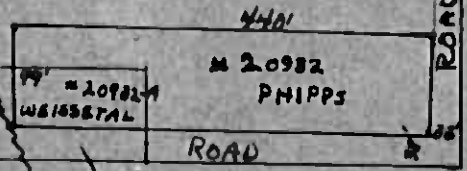
Cass County, Minnesota, for Taxes for the Year 1962.

Table with columns: IN WHOSE NAME ASSESSED, DESCRIPTION OF PROPERTY, TRUE AND FULL VALUATIONS, ASSESSED VALUATIONS, VALUATIONS BY SCHOOL DISTRICTS AS EQUALIZED BY DEPARTMENT OF TAXATION, TAXES, PAID, WHEN PAID, Number of Receipt, March Settlement 1963, June Settlement 1963, November Settlement 1963, Collections to First Monday in January 1964, Delinquent on First Monday in January 1964, Total Delinquent Tax and Penalty, REMARKS.

SE⁺-SW⁺
15-143-26

* 20931

WOODHOUSE



15-143-26
SALEM TWP.

Assessment Roll and Tax List of Real Property in the Town of Salem

Form SCD MILLER-DAVIS CO., MINNEAPOLIS

Table with columns: IN WHOSE NAME ASSESSED, DESCRIPTION OF PROPERTY, TRUE AND FULL VALUATIONS, ASSESSED VALUATIONS, and FINAL EQUALIZED VALUE. Includes entries for E. E. Minton, E. E. and Hazel Minton, Everett L. and Marie Estelle Mann, Elizabeth and Eva Helland, Victor and Boris Erickson, and U. S. of America.

Cass County, Minnesota, for Taxes for the Year 1962.

Table with columns: VALUATIONS BY SCHOOL DISTRICTS AS EQUALIZED BY DEPARTMENT OF TAXATION, Tax Including State Homestead, State Tax on Non-Homestead, SPECIAL TAXES, TOTAL TAXES, PAID, WHEN PAID, Number of Receipt, March Settlement 1963, June Settlement 1963, Penalty, November Settlement 1963, Penalty, Collections to First Monday in January 1964, Penalty, Delinquent on First Monday in January 1964, Total Delinquent Tax and Penalty, REMARKS. Includes handwritten notes and dates like 'HALF PAID OCT 14 1963'.

Assessment Roll and Tax List of Real Property in the Town of Salem, Cass County, Minnesota, for Taxes for the Year 1962.

FORM 501 MILLER-DAVIS CO., MINNEAPOLIS

Table with columns: IN WHOSE NAME ASSESSED, DESCRIPTION OF PROPERTY, TRUE AND FULL VALUATIONS, ASSESSED VALUATIONS, VALUATIONS BY SCHOOL DISTRICTS AS EQUALIZED BY DEPARTMENT OF TAXATION, TAXES, PAID, WHEN PAID, Number of Receipt, March Settlement 1963, June Settlement 1963, Penalty, November Settlement 1963, Equality, Collection to First Monday in January 1964, Penalty, Delinquent on First Monday in January 1964, Total Delinquent Tax and Penalty, REMARKS.

Assessment Roll and Tax List of Real Property in the Town of Salem

Form SCD MILLER-DAVIS CO., MINNEAPOLIS

Table with columns: IN WHOSE NAME ASSESSED, DESCRIPTION OF PROPERTY, TRUE AND FULL VALUATIONS, ASSESSED VALUATIONS, FINAL EQUALIZED VALUE. Includes rows for U.S. of America, Seloy and Gladys Brown, Mary Brown Sterne, Rose and Eleanor Rose Hind, Myron Jacobson, etc.

Cass County, Minnesota, for Taxes for the Year 1962.

Table with columns: SOLD FOR TAXES, VALUATIONS BY SCHOOL DISTRICTS AS EQUALIZED BY DEPARTMENT OF TAXATION, TAX INCLUDING STATE HOMESTEAD, SPECIAL TAXES, TOTAL TAXES, PAID, WHEN PAID, Number of Receipt, March Settlement, June Settlement, November Settlement, Penalty, Collections to First Monday in January, Delinquent on First Monday in January, Total Delinquent Tax and Penalty, REMARKS. Includes rows 1-20 with tax amounts and payment dates.

