

ASSESSMENT & TAX LIST

Remer
1948

no clay
by sup Bd

Marlington Park

REAI

El-tr-oh

1935

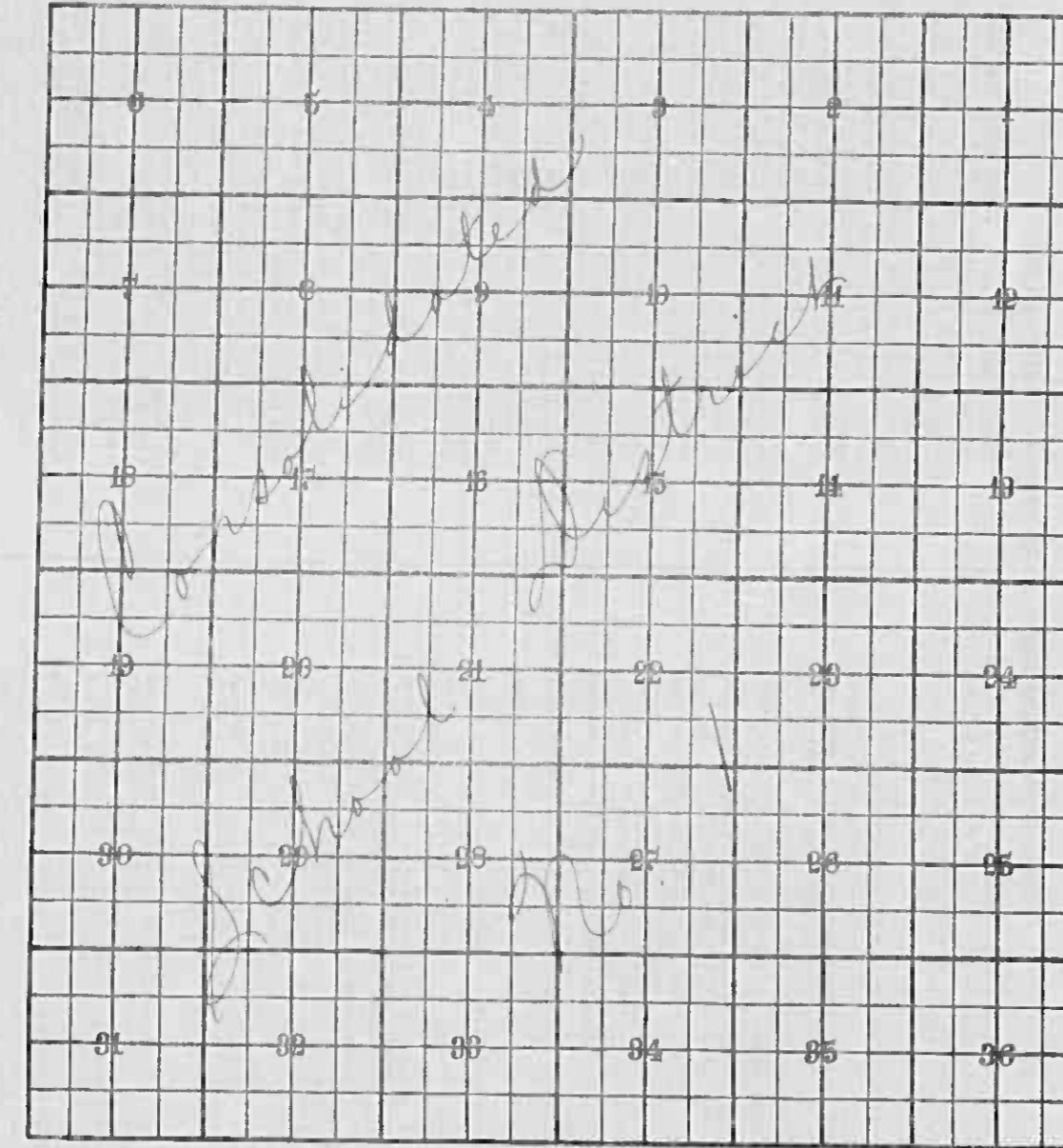
INDEX TO SECTIONS

SECTION PAGE

Sec. 1	
" 2	
" 3	
" 4	
" 5	
" 6	
" 7	
" 8	
" 9	
" 10	
" 11	
" 12	
" 13	
" 14	
" 15	
" 16	
" 17	
" 18	
" 19	
" 20	
" 21	
" 22	
" 23	
" 24	
" 25	
" 26	
" 27	
" 28	
" 29	
" 30	
" 31	
" 32	
" 33	
" 34	
" 35	
" 36	

For Convenience of Auditor in Showing Boundaries of School Districts

Township No. 41 Range No. 26 Mer. P. M.



Returns Showing Grain Received in or Handled by Elevators, Warehouses and Mills in the _____ of _____ in the _____ County of _____ for the Year Ending May 1, 1948.

NAMES OF OWNERS	ADDRESS	Bushels of Wheat	Bushels of Soy Beans	Bushels of Flax	Total No. of Bushels of Wheat, Soy Beans and Flax	★ Tax of 1/4 Mill per Bushel		Bushels of Corn	Bushels of Barley	Bushels of Rye	Bushels of Oats	Bushels of Buckwheat	Bushels of all Other Grains	Total No. Bushels of Corn, Barley, Rye, Oats, Buckwheat and all Other Grains	★ Tax of 1/4 Mill Per Bushel		★ Total Tax		REMARKS		
						Dollars	Cts.								Dollars	Cts.	Dollars	Cts.			

Note ★ Assessors will not fill these Columns

REAL

SUMMARY OF TAX COLLECTION

Original Levy	- - - - -	\$ 358.77	
Additions	- - - - -		
CANCELLATIONS			
	- - - - -		\$ 99.44
Abatements	- - - - -		
			\$ 259.30
COLLECTIONS			
March Settlement	- - - - -	\$ 250.99	
July Settlement	- - - - -	\$ 1146.45	
November Settlement	- - - - -	\$ 563.84	
January Settlement	- - - - -	\$ 103.38	
			\$
Over Collected	(1 - - - - -)	\$	
Under Collected	(1 - 17 - advance)	\$ 17.88	
Delinquent	- - - - -	\$ 176.76	
Total	- - - - -		\$ 2259.30

Treasurer's Office, Cass County, Minnesota

RECEIVED this, the first Monday (being the 3rd day) of January, A. D. 1949, of L. C. Peterson, Auditor of said County, Minnesota, the Tax List of all Taxable Real and Personal Property in the Town of Remer, in said County for the year A. D. 1948, as specified above and amounting to 100 Dollars

Paul D. Jewell
County Treasurer

Auditor's Office, Cass County, Minnesota

I, Auditor of said County, and State of Minnesota, do hereby certify that the following is a correct list of the Taxes levied on the Real and Personal Property in the of for the year 1948.

WITNESS my hand and official seal, the 1949.

(SEAL) County Auditor.

Office of County Treasurer, Cass County, Minnesota

To L. C. Peterson, County Auditor:

January 2 - 1949
Sir: I herewith return to you the Tax List for the Town of Remer in said County for the year 1948, heretofore received from you. I certify that I have compared the same with the duplicate receipts in your office, and have written opposite the amount of each tax so received the words "First Quarter Paid", "Second Quarter Paid", "Third Quarter Paid" or "Paid in full" as the case may be, and the number of my receipt given in discharge of said tax, and each tract or lot of real property against which the taxes remain unpaid or delinquent for said year.

Paul D. Jewell
County Treasurer

Auditor's Office, Cass County, Minnesota

194
I hereby certify that on the first Monday in January 1950, I received of County Treasurer, the Tax List of the of in said

County for the year 1948; that I have compared the said list with the Statements received for by said Treasurer, which are on file in my office, and that each tract or lot of real property therein against which the taxes, or any part thereof, remains unpaid are delinquent for said year.

(SEAL) County Auditor.

TABULAR SCHEDULE OF VALUATIONS,

LEVIED IN THE Township OF *Remer*

RATES AND TAXES

COUNTY OF CASS, STATE OF MINNESOTA

School District No.	VALUATION BY SCHOOL DISTRICTS				RATE OF STATE TAXES		RATE OF COUNTY TAXES						RATE OF TOWN TAXES										RATE OF SCHOOL TAXES		TAXES LEVIED												
	Agricultural Lands	Non-Agricultural Lands	Personal Property	Total Value of all Property except Money and Credits	Total Rate of State Tax	Total Rate of County Tax	Rev.	R. & B.	Welfare	Bonds and Int.	519.	Rev.	R. & B.	Drug Tax	State Loan	Fire	Local	Special	State Loan	Deficiency	Tuition	Transportation	Bod.	Total Rate of Sch'l Tax	Total Rate of all Taxes	Local 1 Mill	Special	State Loan	Def.	Tung.	Bod.	Total School Taxes	FUNDS	Rate	Amounts		
21	7044	765	1379	9188	2.91	23.4	7.2	48.5	7.9	6.5	93.5	27.2	13.6	1.	5.	46.8	1.	15.	24	46.	18	21.5	108.3	251.51	705	10566	16906	31699	1269	15146	762.91	State-Non-Homestead,		2675			
																								122.3	266.51	215	6432	5146	9049	387	4011	26440	State-Homestead,		1546		
																										920	16998	22052	41348	1656	19757	1027.31	County Revenue,		21502		
																																					6616
																																					44567
																																					7259
																																					5973
																																					859.17
																																					24993
																																					12497
																																					920
																																					4595
																																					430.05
																																					920
																																					16998
																																					22052
																																					41348
																																					1656
																																					19757
																																					1027.31

Assessed Value Homestead	Rural	All Other	Personal Property	Total
	5154			5154
Non-Homestead	2655		1379	4034
Total	7809		1379	9188

LOCAL 1 MILL AND SPECIAL SCHOOL TAXES BY DISTRICTS										ALL OTHER TAXES																															
Local 1 Mill	Special	State Loan	Def.	Tung.	Bod.	Local 1 Mill	Special	State Loan	Def.	Tung.	Bod.	Local 1 Mill	Special	State Loan	Def.	Tung.	Bod.	Local 1 Mill	Special	State Loan	Def.	Tung.	Bod.	Local 1 Mill	Special	State Loan	Def.	Tung.	Bod.	Local 1 Mill	Special	State Loan	Def.	Tung.	Bod.	Local 1 Mill	Special	State Loan	Def.	Tung.	Bod.
1	15	24	46	18	21.5	1	15	24	46	18	21.5	1	15	24	46	18	21.5	1	15	24	46	18	21.5	1	15	24	46	18	21.5	1	15	24	46	18	21.5	1	15	24	46	18	21.5
1	20	24	46	18	21.5	1	20	24	46	18	21.5	1	20	24	46	18	21.5	1	20	24	46	18	21.5	1	20	24	46	18	21.5	1	20	24	46	18	21.5	1	20	24	46	18	21.5

Total Number of Acres 3142
 State of Minnesota,
 COUNTY OF CASS
 Auditor of said County and State aforesaid, do hereby certify that the foregoing is true and correct Schedule, showing the valuation of all the taxable property, in the *Sup* of *Remer*, in said County, the several rates of Taxation and Totals of the several Tax Funds levied thereon for the year A. D. 1948
 Witness my hand and official seal, this 21 day of *Apr* A. D. 1948
L. C. Peterson
 County Auditor.

Total Taxes Real Estate 1985.92
 Pers. Prop. 372.82
 Total 2358.74

FUNDS	MARCH SETTLEMENT 1949	JUNE SETTLEMENT 1949	NOV. SETTLEMENT 1949	Amount Collected from Nov. 1947 to First Monday in Jan. 1949	REDUCTIONS	Total Reductions and Collected	BALANCE UNCOLLECTED	ADDITIONS	Total Uncollected to First Monday in January, 1949
State—Non-Homestead,	342	1309	343						
State—Homestead,	273	583	638	120					
County Revenue,	2199	10523	6128	462					
County Road and Bridge,	677	3238	1578	246					
County Welfare,	4558	21810	10627	1944					
County Bond and Interest,	742	3552	1731	325					
<i>Skp.</i>	671	2923	1425	267					
Town Revenue,	2556	12231	5961	1118					
Town Road and Bridge,	1278	6116	2981	559					
Town Drag,	93	450	249	41					
Town State Loan,									
<i>YRE</i>	470	2248	1076	206					
School Local Mill,	94	450	219	41					
School Special,	2532	7708	4209	615					
School State Loan,	2255	10792	5259	786					
Deficiency	4229	20235	9862	1150					
Tuition									
Transportation	167	809	394	74					
<i>B+I</i>	2024	9668	4912	884					
	25099	114645	56384	10338					

	SCHOOL DISTRICT NO.	LOCAL 1 MILL	SPECIAL	STATE LOAN	Defic.	Imp.	B+I	TOTALS
MARCH SETTLEMENT	School District No. <i>Q-C-1</i> <i>7A-C-1</i>	<i>19</i> <i>75</i>	<i>289</i> <i>2243</i>	<i>463</i> <i>1792</i>	<i>868</i> <i>3361</i>	<i>35</i> <i>134</i>	<i>415</i> <i>1606</i>	<i>2087</i> <i>9211</i>
	Totals	<i>94</i>	<i>2532</i>	<i>2255</i>	<i>4229</i>	<i>169</i>	<i>2021</i>	<i>11300</i>
JUNE SETTLEMENT	School District No. <i>Q-C-1</i> <i>7A-C-1</i>	<i>386</i> <i>64</i>	<i>2783</i> <i>1925</i>	<i>9252</i> <i>1540</i>	<i>17348</i> <i>2887</i>	<i>694</i> <i>115</i>	<i>8284</i> <i>1379</i>	<i>41752</i> <i>7910</i>
	Totals	<i>450</i>	<i>7708</i>	<i>10792</i>	<i>20235</i>	<i>809</i>	<i>9668</i>	<i>49662</i>
NOVEMBER SETTLEMENT	School District No. <i>Q-C-1</i> <i>7A-C-1</i>	<i>158</i> <i>61</i>	<i>2368</i> <i>1841</i>	<i>3787</i> <i>1472</i>	<i>7101</i> <i>2761</i>	<i>284</i> <i>110</i>	<i>3593</i> <i>1317</i>	<i>17091</i> <i>7064</i>
	Totals	<i>219</i>	<i>4207</i>	<i>5259</i>	<i>7862</i>	<i>394</i>	<i>4702</i>	<i>24655</i>
NOVEMBER to JANUARY	School District No. <i>Q-C-1</i>	<i>41</i>	<i>615</i>	<i>986</i>	<i>1850</i>	<i>74</i>	<i>884</i>	<i>4450</i>
	Totals	<i>41</i>	<i>615</i>	<i>986</i>	<i>1850</i>	<i>74</i>	<i>884</i>	<i>4450</i>
ADDITIONS	School District No.							
	Totals							
REDUCTIONS	School District No.							
	Totals							

No. 27.

John S. Lewis and wife.

to

Clarence W. Boteler.

Warranty Deed. \$1.00

Dated June 29, 1934.

Filed July 17, 1934 at 9 a.m.

Book 70 of Deeds, page 482.

Signed: 2 witnesses.

Duly acknowledged.

No.

Sw of NW 2-141-26

495
165

660

165
660

9900
9900

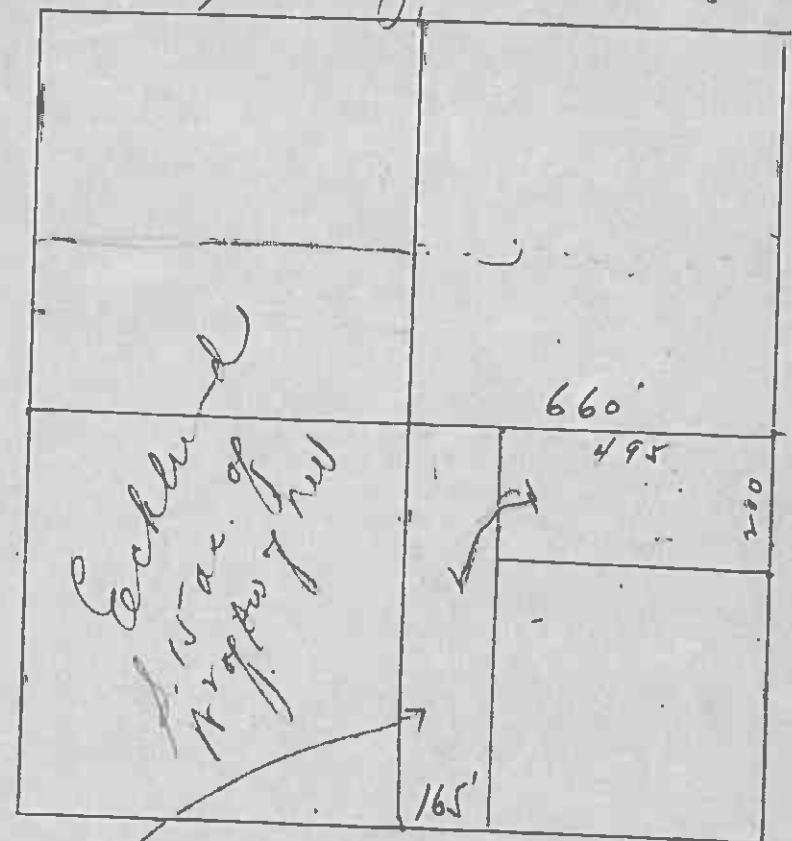
108900

495
200

99000
108900

207900

43



SW-165' of SE of NW 1/4 of NW 26
 N-200' of E-495' of SW
 4.75

Ecklund

4.75 acres

1535 - W
 922 - S

Assessment Roll and Tax List of Real Property in the Town of Remer of Remer

Cass County, Minnesota, for Taxes for the Year 1948.

IN WHOSE NAME ASSESSED	TO WHOM TRANSFERRED	DESCRIPTION OF PROPERTY						TRUE AND FULL VALUATIONS								ASSESSED VALUATIONS								FINAL EQUALIZED VALUE	SOLD FOR TAXES	VALUATIONS BY SCHOOL DISTRICTS AS EQUALIZED BY DEPARTMENT OF TAXATION								TAX INCLUSION STATE	STATE TAX ON NON-HOMESTEAD	SPECIAL TAXES	TOTAL TAXES	PAID	WHEN PAID	Number of Receipt	March Settlement 1949	June Settlement 1949	November Settlement 1949	Penalty	Collections to First Monday in January 1950	Penalty	Delinquency on First Monday in January 1950	Total Delinquent Tax and Penalty	REMARKS													
		SUBDIVISION	Sec. of Loc.	Town or Block	Rng.	Number of Acres of Land		LAND Exclusive of Structures and Improvements	BUILDINGS and Other Structures	MACHINERY Permanently Attached to Real Estate	TOTAL True and Full Value	RURAL		ALL OTHER		MACHINERY Permanently Attached to Real Estate	TOTAL ASSESSED VALUE	Total Assessed Value as Equalized by the Board of Review	District No. 1		District No. 2		District No. 3			District No. 4		Rate	Mills	Rate	Mills	Rate	Mills																	Rate	Mills											
						Dollars	Cts.					Dollars	Cts.	Dollars	Cts.				Dollars	Cts.	Dollars	Cts.	Dollars			Cts.	Dollars																									Cts.	Dollars	Cts.	Dollars	Cts.	Dollars	Cts.	Dollars	Cts.	Dollars	Cts.
State of Minnesota		NE 1/4 of NE 1/4		13	41	26																																																								
Bernie L. Nichols		NW 1/4 of NE 1/4					40		430					86		86																																														
"		SW 1/4 of NE 1/4					40		340	400			740	148		148																																														
State of Minnesota		SE 1/4 of NE 1/4																																																												
U. S. of America		NE 1/4 of NW 1/4																																																												
Howard O. Hinger		NW 1/4 of NW 1/4					40		230				230	46		46																																														
"		SW 1/4 of NW 1/4					40		235				235	47		47																																														
U. S. of America		SE 1/4 of NW 1/4																																																												
U. S. of America		NE 1/4 of SW 1/4																																																												
Killed K. Hinger		NW 1/4 of SW 1/4					40		240				240	48		48																																														
State of Minnesota		SW 1/4 of SW 1/4																																																												
State of Minnesota		SE 1/4 of SW 1/4																																																												
U. S.		NE 1/4 of SE 1/4																																																												
U. S. of America		NW 1/4 of SE 1/4																																																												
State of Minnesota		SW 1/4 of SE 1/4																																																												
State of Minnesota		SE 1/4 of SE 1/4																																																												
							200		1475	400			1875	375		375																																														

PERSONAL ESTATE TAXES

Assessment Roll and Tax List of Real Property in the Town of *Linn* of *Linn* County, Minnesota

Cass County, Minnesota, for Taxes for the Year 1948.

Table with columns: INWHOSE NAME ASSESSED, TO WHOM TRANSFERRED, DESCRIPTION OF PROPERTY, TRUE AND FULL VALUATIONS, ASSESSED VALUATIONS, VALUATIONS BY SCHOOL DISTRICTS AS EQUALIZED BY DEPARTMENT OF TAXATION, TAXES, PAID, WHEN PAID, Number of Receipt, etc.

IN WHOSE NAME ASSESSED	TO WHOM TRANSFERRED	DESCRIPTION OF PROPERTY				TRUE AND FULL VALUATIONS				ASSESSED VALUATIONS				FINAL EQUALIZED VALUE	SOLD FOR TAXES	VALUATIONS BY SCHOOL DISTRICTS AS EQUALIZED BY DEPARTMENT OF TAXATION						SPECIAL TAXES	TOTAL TAXES	PAID	WHEN PAID	Number of Receipt	March Settlement 1949	June Settlement 1949	Penalty	November Settlement 1949	Penalty	Collections to First Monday in January 1950	Penalty	Delinquent on First Monday in January 1950	Total Delinquent Tax and Penalty	REMARKS						
		SUBDIVISION	Sec. or Lot	Town or Block	Rng.	Number of Acres of Land	LAND Exclusive of Structures and Improvements	BUILDINGS and Other Structures	MACHINERY Permanently Attached to Real Estate	TOTAL True and Full Value	RURAL		ALL OTHER			MACHINERY Permanently Attached to Real Estate	TOTAL ASSESSED VALUE	Total Assessed Value as Equalized by the Board of Review	District No.	District No.	District No.																District No.	District No.	District No.	Tax Including State Homestead	State Tax on Non-Homestead	
											Homestead Up to \$4,000 20%	Over \$4,000 and Non-Homestead 33 1/3%	Homestead Up to \$4,000 25%																													Over \$4,000 and Non-Homestead 40%
		Acres	100ths	No. School District	Indicate Homestead or No.	Indicate Agricultural Use or No.	Dollars	Dollars	Dollars	Dollars	Dollars	Dollars	Dollars			Dollars	Dollars	Dollars	Dollars																							
U. S. of America		NE 1/4 of NE 1/4																																								
U. S. of America		NW 1/4 of NE 1/4																																								
U. S. of America		SW 1/4 of NE 1/4																																								
U. S. of America		SE 1/4 of NE 1/4																																								
U. S. of America		NE 1/4 of NW 1/4																																								
U. S. of America		NW 1/4 of NW 1/4																																								
<i>State of Minnesota</i>	<i>State of Minnesota</i>	SW 1/4 of NW 1/4			40		<i>No</i>		<i>201</i>				<i>201</i>		<i>67</i>																											
U. S. of America		SE 1/4 of NW 1/4														<i>SOLD FOR TAXES</i>		<i>67</i>			<i>16 86</i>	<i>26</i>		<i>17 12</i>		<i>8 Forfeited</i>								<i>17 12 Come</i>								
U. S. of America		NE 1/4 of SW 1/4																																								
<i>State of Minnesota</i>	<i>State of Minnesota</i>	NW 1/4 of SW 1/4			40		<i>"</i>		<i>201</i>				<i>201</i>		<i>67</i>																											
U. S. of America		SW 1/4 of SW 1/4														<i>SOLD FOR TAXES</i>		<i>67</i>			<i>16 86</i>	<i>26</i>		<i>17 12</i>		<i>12 Forfeited</i>							<i>17 12 Come</i>									
U. S. of America		SE 1/4 of SW 1/4																																								
U. S. of America		NE 1/4 of SE 1/4																																								
U. S. of America		NW 1/4 of SE 1/4																																								
U. S. of America		SW 1/4 of SE 1/4																																								
U. S. of America		SE 1/4 of SE 1/4																																								
<i>State of Minnesota</i>	<i>State of Minnesota</i>				80				<i>402</i>				<i>402</i>		<i>124</i>						<i>134</i>	<i>3372</i>	<i>50</i>	<i>3424</i>																		

Marlington Park

Elchok

PERSONAL

Assessment Roll and Tax List of Real Property in the _____ of _____

IN WHOSE NAME ASSESSED	TO WHOM TRANSFERRED	DESCRIPTION OF PROPERTY				TRUE AND FULL VALUATIONS							ASSESSED VALUATIONS			FINAL EQUALIZED VALUE		
		SUBDIVISION	Sec. or Lot	Town or Block	Reg.	Number of Acres of Land	LAND Exclusive of Structures and Improvements	BUILDINGS and Other Structures	MACHINERY Permanently Attached to Real Estate	TOTAL True and Full Value	RURAL		ALL OTHER		MACHINERY Permanently Attached to Real Estate		TOTAL ASSESSED VALUE	Total Assessed Value as Equalized by the Board of Review
											Acres	100ths	Homestead Up to \$4,000 20%	Over \$4,000 and Non-Homestead 33 1/3%				
		NE 1/4 of NE 1/4																
		NW 1/4 of NE 1/4																
		SW 1/4 of NE 1/4																
		SE 1/4 of NE 1/4																
		NE 1/4 of NW 1/4																
		NW 1/4 of NW 1/4																
		SW 1/4 of NW 1/4																
		SE 1/4 of NW 1/4																
		NE 1/4 of SW 1/4																
		NW 1/4 of SW 1/4																
		SW 1/4 of SW 1/4																
		SE 1/4 of SW 1/4																
		NE 1/4 of SE 1/4																
		NW 1/4 of SE 1/4																
		SW 1/4 of SE 1/4																
		SE 1/4 of SE 1/4																

Cass County, Minnesota, for Taxes for the Year 1948.

SOLD FOR TAXES	VALUATIONS BY SCHOOL DISTRICTS AS EQUALIZED BY DEPARTMENT OF TAXATION						Tax Including State Homestead	State Tax on Non-Homestead	SPECIAL TAXES	TOTAL TAXES	PAID	WHEN PAID	Number of Receipt	March Settlement 1949	June Settlement 1949	Penalty	November Settlement 1949	Penalty	Collections to First Monday in January 1950	Penalty	Delinquent on First Monday in January 1950	Total Delinquent Tax and Penalty	REMARKS																
	District No.	District No.	District No.	District No.	District No.	District No.																		Rate	Rate	Rate	Rate	Rate	Rate	Rate	Rate	Rate	Rate	Rate	Rate	Rate	Rate	Rate	Rate
MillsMillsMillsMillsMillsMills																	MillsMillsMillsMillsMillsMillsMillsMillsMillsMillsMillsMillsMillsMillsMillsMills

Handwritten signature

PERSONAL ELRICH

