

Assessment & Tax List - 1961

Powers

Assessment of Tax

COLLECTIONS OF TAXES OF 1961 OF Town of Powell, CASS COUNTY, MINNESOTA

Form 334 MILLER-DAVIS COMPANY, MINNEAPOLIS

NAME OF OWNER	FUNDS	MARCH SETTLEMENT	JUNE SETTLEMENT	NOV. SETTLEMENT	Amount Collected from Nov. 1960 to First Monday in Jan. 1961	REDUCTIONS	Total Reductions and Collected	BALANCE UNCOLLECTED	ADDITIONS	Total Uncollected to First Monday in January, 1961
		19.6.2	19.6.2	19.6.2						
	State-Non-Homestead,	5972	25390	9488	319					
	State-Homestead,	5098	25490	10591	374					
	County Revenue,	43717	148503	61816	2470					
	County Road and Bridge,	23720	80602	33541	1340					
	County Welfare,	67959	230924	96095	3840					
	County Bond and Interest,	1293	4392	1828	73					
	C. H. Bldg.	2372	8060	3355	133					
	Agri. Assn.	593	2015	839	34					
	Ch. Def.	783	2660	1107	44					
	Town Revenue,	5349	18176	7563	302					
	Town Road and Bridge,	16745	90867	37818	1512					
	Town State Loan,									
	<u>Fire</u>	5348	18176	7563	302					
	School Local 1 Mill,	46288	128415	56820	2589					
	School Special,									
	School State Loan,									
	Deficiency	47486	166151	74990	2620					
	Tuition C. O.	34092	114424	45906	1945					
	Transportation									
	PERA	5323	18324	7913	297					
	Wll. Def.	12916	43888	18263	730					
	PERA	6725	22850	9508	380					
		341779	1149307	485004	19304					

MARCH SETTLEMENT	School District No.	LOCAL 1 MILL	SPECIAL	STATE LOAN	Deficiency	C. O.	PERA	TOTALS
	114A		9977		12419	12515	1616	36527
	1147A		28989		18043	18182	2348	67562
	Un A		966		3968	791	317	6042
	Un 7A		6356		13056	2604	1042	23058
	Totals		46288		47486	34092	5323	133189
	114A		55456		69031	69564	8984	203035
	1147A		50667		31535	31778	4104	118084
	Un A		9635		39585	7896	3160	60276
	Un 7A		12657		26000	5186	2076	45919
	Totals		128415		166151	114424	18324	427314
	1147A		24678		15359	15478	1979	57514
	Un A		4146		17032	3397	1360	25935
	Un 7A		9574		19667	3923	1570	34734
	114A		18422		22932	23108	2984	67446
	Totals		56820		74990	45906	7913	185629
	Un A		209		860	171	69	1309
	114 A		447		557	562	72	1638
	114 7A		1933		1203	1212	156	4504
	Totals		2589		2620	1945	297	7451
	Totals							
	Totals							

Millers Point
Woodland
Deshlores
Beach
Korteehoe
Beach
El Sueno
Beach

Assessment Roll and Tax List of Real Property in the Town of Powers

Table with columns for Description of Property, True and Full Valuations, Assessed Valuations, Final Equalized Value, Sold for Taxes, and various tax categories (District, State, Special, Total, PAID, WHEN PAID, etc.). Includes handwritten entries for George J. Owen and numerical data for 20 lots.

Rec'd P. State

Filters Point Woodland Des Moines Horseshoe Bay El Sueno Beach

Assessment Roll and Tax List of Real Property in the Town of Powers, * Indicate Type of Property: R-Residential, C-Commercial, I-Industrial, U-Utility, F-Farm, L-Lakeshore, T-Timber, M-Mineral

Cass County, Minnesota, for Taxes for the Year 1961.

Table with columns: IN WHOSE NAME ASSESSED, DESCRIPTION OF PROPERTY, TRUE AND FULL VALUATIONS, ASSESSED VALUATIONS, VALUATIONS BY SCHOOL DISTRICTS AS EQUALIZED BY DEPARTMENT OF TAXATION, Tax including State Homestead, State Tax on Non-Homestead, SPECIAL TAXES, TOTAL TAXES, PAID, WHEN PAID, Number of Receipt, March Settlement 1962, June Settlement 1962, November Settlement 1962, Collections to First Monday in January 1963, Delinquent on First Monday in January 1963, Total Delinquent Tax and Penalty, REMARKS.

Real Estate

Elfers Point, Woodland Beach, Des Moines Beach, Koshongumoy Beach, El Sueno Beach, and Lakewood on Rainy Lake

Assessment Roll and Tax List of Real Property in the Town of Powers, * Indicate Type of Property: R-Residential, C-Commercial, I-Industrial, U-Utility, F-Farm, L-Lakeshore, T-Timber, M-Mineral

Table with columns: IN WHOSE NAME ASSESSED, DESCRIPTION OF PROPERTY, TRUE AND FULL VALUATIONS, ASSESSED VALUATIONS, and FINAL EQUALIZED VALUE. Includes entries for Anderson, Carder, Taylor, and Bundy.

Cass County, Minnesota, for Taxes for the Year 1961.

Table with columns: VALUATIONS BY SCHOOL DISTRICTS AS EQUALIZED BY DEPARTMENT OF TAXATION, Tax including State Homestead, State Tax on Non-Homestead, SPECIAL TAXES, TOTAL TAXES, PAID, WHEN PAID, Number of Receipt, March Settlement, June Settlement, November Settlement, Collections to First Monday in January, Delinquent on First Monday in January, Total Delinquent Tax and Penalty, and REMARKS. Includes handwritten notes and calculations.

Real Estate

Albers Point, Woodland, Des Moines Beach, Borshod Bay, El Sueno Beach, Eastman & Park on Rainy Lake

Assessment Roll and Tax List of Real Property in the Town of Powers

* Indicate Type of Property: R-Residential, C-Commercial, I-Industrial, U-Utility, F-Farm, L-Lakeshore, T-Timber, M-Mineral

Table with columns for Description of Property, Assessed Valuations (Rural, All Other, Machinery, Seasonal), Final Equalized Value, Sold for Taxes, Valuations by School Districts, and Tax/Paid information. Includes handwritten entries for property owners like M.P. & John C. + Florence Dumont and various tax payment dates.

Beas Estate

Vertical text on the right edge of the page: Filers Point, Woodland Beach, Des Moines, Lakeshore Beach, El Sueno Beach, and Lakewood Beach.

Assessment Roll and Tax List of Real Property in the Town of Powers

Form 500 - MILLER-DAVIS CO., MINNEAPOLIS

* Indicate Type of Property: R-Residential, C-Commercial, I-Industrial, U-Utility, F-Farm, L-Lakeshore, T-Timber, M-Mineral

Main table with columns: IN WHOSE NAME ASSESSED, DESCRIPTION OF PROPERTY, TRUE AND FULL VALUATIONS, ASSESSED VALUATIONS, VALUATIONS BY SCHOOL DISTRICTS AS EQUALIZED BY DEPARTMENT OF TAXATION, TAX INCLUDING STATE HOMESTEAD, SPECIAL TAXES, TOTAL TAXES, PAID, WHEN PAID, Number of Receipt, March Settlement, June Settlement, Penalty, November Settlement, Penalty, Collections to First Monday in January 1963, Delinquent on First Monday in January 1963, Total Delinquent Tax and Penalty, REMARKS.

(Cont. Next page)

Vertical text on the right edge: Filers Point, Woodland Beach, Des Moines Beach, Horseshoe Bay, El Steno Beach, Hartman's Lake Shore on Rainy Lake

Assessment Roll and Tax List of Real Property in the Town of Powers

* Indicate Type of Property: R-Residential, C-Commercial, I-Industrial, U-Utility, F-Farm, L-Lakeshore, T-Timber, M-Mineral

Form 500 MILLER-DAVIS CO., MINNEAPOLIS

Table with columns: IN WHOSE NAME ASSESSED, DESCRIPTION OF PROPERTY, No. School District, Indicate Homestead, Agri or Sea, Indicate Type of Property, TRUE AND FULL VALUATIONS (LAND, BUILDINGS, MACHINERY, TOTAL True and Full Value), ASSESSED VALUATIONS (RURAL, ALL OTHER, MACHINERY, Seasonal and Recreational Cabins, TOTAL ASSESSED VALUE, Total Assessed Value as Equalized by the Board of Review, FINAL EQUALIZED VALUE).

Laverne + Martha L. Vincent
Ernest C. + Anna Lindlinger
Frederick R. + Margaret W. Burlew
Laverne + Martha L. Vincent
Ernest C. + Anna J. Lindlinger

V. L. Schaffer
Clarence V. + Lois Mae Ringvalaki

State of Minnesota
Bess E. Weikle

W. H. Forbes

Cass County, Minnesota, for Taxes for the Year 1961.

Table with columns: SOLD FOR TAXES, VALUATIONS BY SCHOOL DISTRICTS AS EQUALIZED BY DEPARTMENT OF TAXATION (District No., Rate, etc.), Tax including State Homestead, State Tax on Non-Homestead, SPECIAL TAXES, TOTAL TAXES, PAID, WHEN PAID, Number of Receipt, March Settlement, June Settlement, Penalty, November Settlement, Penalty, Collections to First Monday in January 1963, Penalty, Delinquent on First Monday in January 1963, Total Delinquent Tax and Penalty, REMARKS.

3 SOLD FOR TAXES
4
5
6
7
9
10
15

148
4410
148
158
4410
318
4723

Millers Point
Woodland
Des Moines
Horseshoe Bay
El Steno
Beach
Beach
Hunting on Rainy Lake

Assessment Roll and Tax List of Real Property in the Town of Powers

Table with columns: IN WHOSE NAME ASSESSED, DESCRIPTION OF PROPERTY, TRUE AND FULL VALUATIONS, ASSESSED VALUATIONS, and FINAL EQUALIZED VALUE.

Cass County, Minnesota, for Taxes for the Year 1961.

Table with columns: VALUATIONS BY SCHOOL DISTRICTS AS EQUALIZED BY DEPARTMENT OF TAXATION, TAX INCLUDING STATE HOMESTEAD, SPECIAL TAXES, TOTAL TAXES, PAID, WHEN PAID, Number of Receipt, March Settlement, June Settlement, Penalty, November Settlement, Penalty, Collections to First Monday in January 1963, Delinquent on First Monday in January 1963, Total Delinquent Tax and Penalty, and REMARKS.

Cont. next page

Vertical text on the right edge of the page: Hillers Point, Woodland Beach, Des Moines Beach, Horseshoe Bay, El Sano Beach, and Hamlet on Rainy Lake.

Assessment Roll and Tax List of Real Property in the Town of Powers

* Indicate Type of Property: R-Residential, C-Commercial, I-Industrial, U-Utility, F-Farm, L-Lakeshore, T-Timber, M-Mineral

Form 5CD - MILLER-DAVIS CO., MINNEAPOLIS

Table with columns: IN WHOSE NAME ASSESSED, DESCRIPTION OF PROPERTY, TRUE AND FULL VALUATIONS, ASSESSED VALUATIONS, FINAL EQUALIZED VALUE. Includes entries for Richard B. + Esther M. Gillespie, H. M. Shimmier, and Anthony J. + Charlotte H. Deblon.

Cass County, Minnesota, for Taxes for the Year 1961.

Table with columns: VALUATIONS BY SCHOOL DISTRICTS AS EQUALIZED BY DEPARTMENT OF TAXATION, Tax including State Homestead, State Tax on Non-Homestead, SPECIAL TAXES, TOTAL TAXES, PAID, WHEN PAID, Number of Receipt, March Settlement 1962, June Settlement 1962, Penalty, November Settlement 1962, Penalty, Collections to First Monday in January 1963, Delinquent on First Monday in January 1963, Total Delinquent Tax and Penalty, REMARKS. Includes handwritten entries for tax amounts and payment dates.

Assessment Roll and Tax List of Real Property in the Town of Powers

FORM 500 MILLER-DAVIS CO., MINNEAPOLIS

* Indicate Type of Property: R-Residential, C-Commercial, I-Industrial, U-Utility, F-Farm, L-Lakeshore, T-Timber, M-Mineral

Table with columns for Description of Property, True and Full Valuations, Assessed Valuations, Valuations by School Districts, and Tax Information. Includes entries for Walter P. Quist, Lorraine Marie Reef, Basil G. + Lela M. Wyatt, Walter Halts, Eugene H. + Marie F. Kraiser, and George L. + Elaine G. Kraiser.

Assessment Roll and Tax List of Real Property in the Town of Powers

Table with columns: IN WHOSE NAME ASSESSED, DESCRIPTION OF PROPERTY, TRUE AND FULL VALUATIONS, ASSESSED VALUATIONS, VALUATIONS BY SCHOOL DISTRICTS AS EQUALIZED BY DEPARTMENT OF TAXATION, Tax including State Homestead, State Tax on Non-Homestead, SPECIAL TAXES, TOTAL TAXES, PAID, WHEN PAID, Number of Receipt, March Settlement 1962, June Settlement 1962, Penalty, November Settlement 1962, Penalty, Collections to First Monday in January 1963, Delinquent on First Monday in January 1963, Total Delinquent Tax and Penalty, REMARKS.

1961 11-21-61

Fillers Point Woodland Beach Des Moines Reservoir Bay El Sueno Beach

Assessment Roll and Tax List of Real Property in the Town of Powers

* Indicate Type of Property: R-Residential, C-Commercial, I-Industrial, U-Utility, F-Farm, L-Lakeshore, T-Timber, M-Mineral

Form 562 - MILLER-DAVIS CO., MINNEAPOLIS

Table with columns: IN WHOSE NAME ASSESSED, DESCRIPTION OF PROPERTY, ASSESSED VALUATIONS (RURAL, ALL OTHER, MACHINERY, etc.), and FINAL EQUALIZED VALUE.

Cass County, Minnesota, for Taxes for the Year 1961.

Table with columns: VALUATIONS BY SCHOOL DISTRICTS AS EQUALIZED BY DEPARTMENT OF TAXATION, Tax including State Homestead, State Tax on Non-Homestead, SPECIAL TAXES, TOTAL TAXES, PAID, WHEN PAID, Number of Receipt, March Settlement, June Settlement, November Settlement, Collections to First Monday in January 1963, Delinquent on First Monday in January 1963, Total Delinquent Tax and Penalty, and REMARKS.

Handwritten notes and names in the left margin, including 'Earl O. + Mary Della Reeve', 'Joseph W. + Dorothy Reeve', 'Cles W. + Myrtle Reeve', etc.

Vertical text on the far right edge of the page, including 'Hills Point', 'Woodland', 'Des Moines', 'Horseshoe Bay', 'El Sueno', 'Beach', 'Hammers', 'Herald's Lakeshore', 'on Rainy Lake'.

Assessment Roll and Tax List of Real Property in the Town of Powers

* Indicate Type of Property: R-Residential, C-Commercial, I-Industrial, U-Utility, F-Farm, L-Lakeshore, T-Timber, M-Mineral

Table with columns: IN WHOSE NAME ASSESSED, DESCRIPTION OF PROPERTY, No. School District, Indicate Home-Stead, Acreage, Assessed Valuations (Rural, All Other, Machinery, Seasonal and Recreational Cabins, Total Assessed Value), Final Equalized Value.

Cass County, Minnesota, for Taxes for the Year 1961.

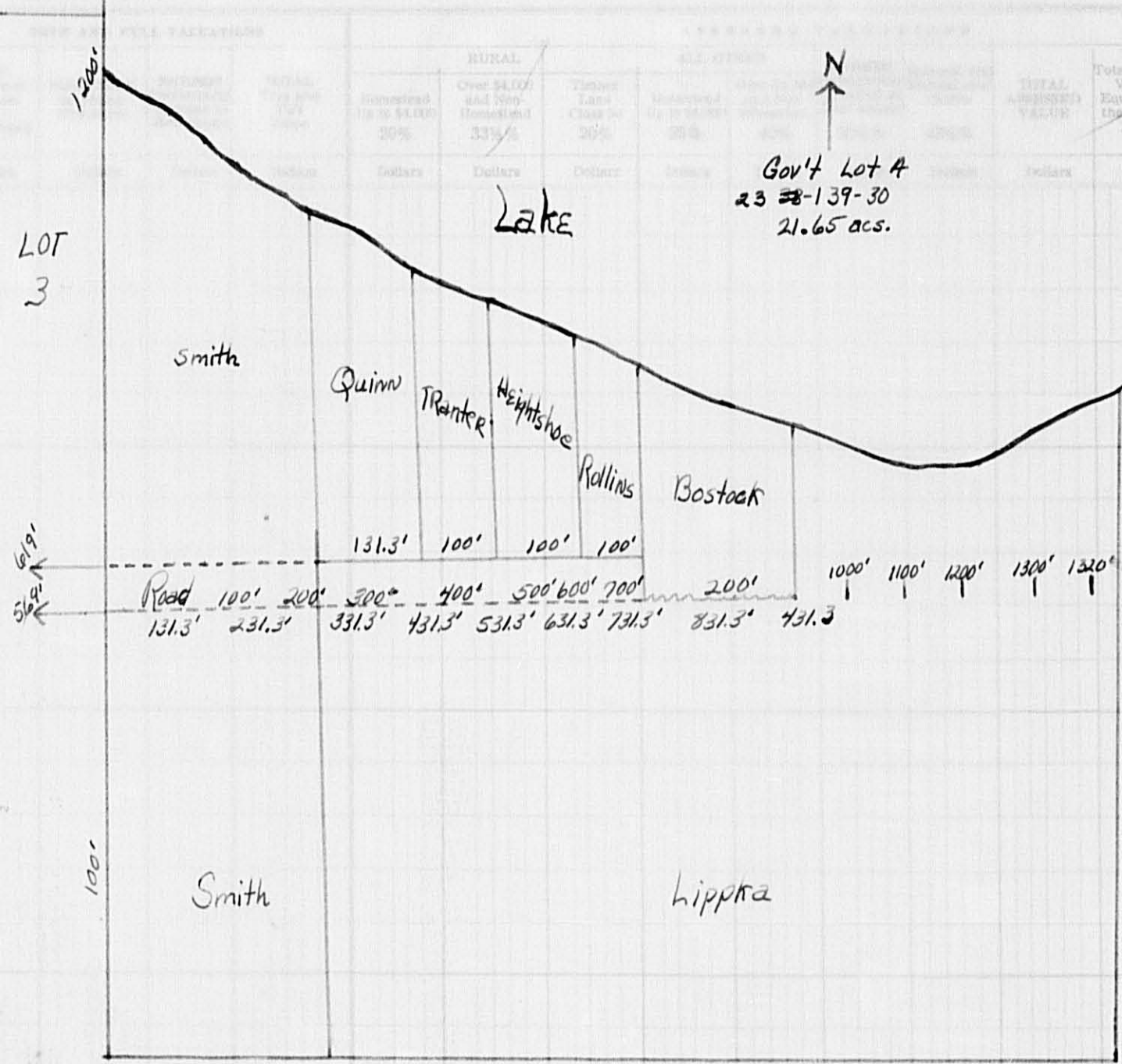
Table with columns: VALUATIONS BY SCHOOL DISTRICTS AS EQUALIZED BY DEPARTMENT OF TAXATION, Tax Including State Homestead, State Tax on Non-Homestead, SPECIAL TAXES, TOTAL TAXES, PAID, WHEN PAID, Number of Receipt, March Settlement, June Settlement, Penalty, Collections to First Monday in January 1963, Delinquent on First Monday in January 1963, Total Delinquent Tax and Penalty, REMARKS.

(Cont. Next Page)

Vertical text on the right edge of the page, including 'Hillers Point Woodland Beach' and 'Hastland's Lakeshore on Rainy Lake'.

Assessment Roll and Tax List of Real Property in the

LOT 2



LOT 3

69'

100'

FORM 500 MILLER-DAVIS CO., MINNEAPOLIS

IN WHOSE NAME ASSESSED	DESCRIPTION OF PROPERTY			No. School District	Indicate Homestead Yes or No	Agricultural or Seasonal Yes or No	Indicate Type of Property	Acres	Number of Acres of Land	Town or Block	Sec. of Lot	Rng.
	Subdivision	Acres	100ths									
Clyde H. + Annie F. Quinn	E. 134.3' of W. 431.3' except S. 618' of East Lot 4	23	13930	120	114	Yes	R					
L. H. + Melva E. Heightshoe	E. 100' of W. 631.3' except S. 618' of East Lot 4			66		Yes	R					
Orie H. + Roba K. Rollins	E. 100' of W. 731.3' except S. 618' of East Lot 4			50		Yes	L					
Lyle Thomas	1 ac. of East Lot 6			1		Yes	L					
Frank Peplitsch	1/16 ac. of East Lot 8					Yes	L					
L. Leslie + Emogene S. Smith	W. 300' of East Lot 4			750		Yes	L					
Carl H. + Laura A. Tranter	E. 100' of W. 531.3' except S. 618' N.W. of N.W. of East Lot 4			75		Yes	L					
	S.W. 1/4 of N.W. 1/4											
	S.E. 1/4 of N.W. 1/4											
Otto A. Sell	200' x 400' on share of East Lot 6			190		Yes	L					
Hans E. + Holly B. Anderson	1/4 ac. of East Lot 6 + S.E. 1/4 of S.E. 1/4			162		Yes	"					
William H. + Martha Schroeder	1 ac. of East Lot 3 (tract 9)			1		Yes	"					
Peter + Anna Kuhns	1 ac. of East Lot 3			1		Yes	"					
Anthony H. + Helen Schroeder	1 ac. of East Lot 3 (tract 8)			1		Yes	"					
L. Leslie Smith	That Part of S.E. 1/4 lying N. + W. of H. 27			770			T					
Marie E. Schmidt	lying S. + E. of N.E. 1/4 of S.E. 1/4 of Co. Rd.			770			T					
L. O. + Mahel Wilson	Part of East Lot 6			770			L					
" " "	.56 ac. of Part of East Lot 6			770			L					
Otto A. Sell	Part of East Lot 6											

1813

Cass County, Minnesota, for Taxes for the Year 1961.

SOLD FOR TAXES	VALUATIONS BY SCHOOL DISTRICTS AS EQUALIZED BY DEPARTMENT OF TAXATION						Tax including State Homestead	State Tax on Non-Homestead	SPECIAL TAXES	SPECIAL TAXES	TOTAL TAXES	PAID	WHEN PAID	Number of Receipt	March Settlement 1962	June Settlement 1962	Penalty	November Settlement 1962	Penalty	Collections to First Monday in January 1963	Penalty	Delinquent on First Monday in January 1963	Total Delinquent Tax and Penalty	REMARKS
	District No.	District No.	District No.	District No.	District No.	District No.																		
	114	114	114	114	114	114	9.12																	
1																								
2																								
3																								
4																								
5																								
6																								
7																								
8																								
9																								
10																								
11	SOLD FOR TAXES																							
12																								
13	SOLD FOR TAXES																							
14																								
15																								
16																								
17																								
18																								
19																								
20																								

Fillers Point Woodland Beach Restlakes Horseshoe Bay El Sueño El Sombrero Highland's Lakeshore on Rainy Lake

Assessment Roll and Tax List of Real Property in the Town of Powers

* Indicate Type of Property: R-Residential, C-Commercial, I-Industrial, U-Utility, F-Farm, L-Lakeshore, T-Timber, M-Mineral

Form SCD - MILLER-DAVIS CO., MINNEAPOLIS

Table with columns: IN WHOSE NAME ASSESSED, DESCRIPTION OF PROPERTY, TRUE AND FULL VALUATIONS, ASSESSED VALUATIONS, and FINAL EQUALIZED VALUE. Includes entries for Harbert Stehr, Daniel + Gladys B. Becker, Chester C. + Eugenia Jellhouse, Arthur A. + Rae Ellen Reuck, Glen Walden, Daniel B. + Gladys B. Becker, Arthur Reuck, Otto L. + Eleanor S. Pekko, Harry A. Caroline H. Vesch, Harbert Stehr, and Carl H. + Margaret E. Wagner.

(Cont. next page)

Cass County, Minnesota, for Taxes for the Year 1961.

Table with columns: VALUATIONS BY SCHOOL DISTRICTS AS EQUALIZED BY DEPARTMENT OF TAXATION, Tax Including State Homestead, State Tax on Non-Homestead, SPECIAL TAXES, TOTAL TAXES, PAID, WHEN PAID, Number of Receipt, March Settlement, June Settlement, November Settlement, Collections to First Monday in January 1963, Delinquent on First Monday in January 1963, Total Delinquent Tax and Penalty, and REMARKS. Includes entries for Harbert Stehr, Daniel B. + Gladys B. Becker, Arthur Reuck, Otto L. + Eleanor S. Pekko, Harry A. Caroline H. Vesch, Harbert Stehr, and Carl H. + Margaret E. Wagner.

Vertical text on the right edge of the page: Hillers Point, Woodland Beach, Des Moines Beach, Horseshoe Bay, El Sueño Beach, Harland Lakeshore on Rainy Lake.

Assessment Roll and Tax List of Real Property in the Town of Powers

* Indicate Type of Property: R-Residential, C-Commercial, I-Industrial, U-Utility, F-Farm, L-Lakeshore, T-Timber, M-Mineral

Table with columns: IN WHOSE NAME ASSESSED, DESCRIPTION OF PROPERTY, TRUE AND FULL VALUATIONS (RURAL, ALL OTHER, MACHINERY, Seasonal and Recreational Cabins, TOTAL ASSESSED VALUE, Total Assessed Value as Equalized by the Board of Review, FINAL EQUALIZED VALUE), and various tax-related fields.

Cass County, Minnesota, for Taxes for the Year 1961.

Table with columns: VALUATIONS BY SCHOOL DISTRICTS AS EQUALIZED BY DEPARTMENT OF TAXATION, Tax Including State Homestead, State Tax on Non-Homestead, SPECIAL TAXES, TOTAL TAXES, PAID, WHEN PAID, Number of Receipt, March Settlement 1962, June Settlement 1962, Penalty, November Settlement 1962, Penalty, Collections to First Monday in January 1963, Delinquent on First Monday in January 1963, Total Delinquent Tax and Penalty, REMARKS.

Vertical text on the right edge of the page: Allers Point Woodland Beach, Des Moines Beach, Horseshoe Bay, El Suro Beach, Harland's Lakeshore on Barry Lake.

Assessment Roll and Tax List of Real Property in the Town of Powers

Form SCD, MILLER-DAVIS CO., MINNEAPOLIS

* Indicate Type of Property: R-Residential, C-Commercial, I-Industrial, U-Utility, F-Farm, L-Lakeshore, T-Timber, M-Mineral

Table with columns for IN WHOSE NAME ASSESSED, DESCRIPTION OF PROPERTY, TRUE AND FULL VALUATIONS, ASSESSED VALUATIONS, VALUATIONS BY SCHOOL DISTRICTS AS EQUALIZED BY DEPARTMENT OF TAXATION, Tax including State Homestead, State Tax on Non-Homestead, SPECIAL TAXES, TOTAL TAXES, PAID, WHEN PAID, Number of Receipt, March Settlement 1962, June Settlement 1962, Penalty, November Settlement 1962, Penalty, Collections to First Monday in January 1963, Penalty, Delinquent on First Monday in January 1963, Total Delinquent Tax and Penalty, REMARKS.

Alfers Point, Woodland Beach, Des Moines Beach, Boiseshoekumy Beach, El Sueno Beach, Harland's Lakeshore on Rainy Lake

Assessment Roll and Tax List of Real Property in the Town of Powers

* Indicate Type of Property: R-Residential, C-Commercial, I-Industrial, U-Utility, F-Farm, L-Lakeshore, T-Timber, M-Mineral

Form S.C.D. MILLER-DAVIS CO., MINNEAPOLIS

Table with columns: IN WHOSE NAME ASSESSED, DESCRIPTION OF PROPERTY, TRUE AND FULL VALUATIONS, ASSESSED VALUATIONS, and FINAL EQUALIZED VALUE. Includes entries for Gladys Tjssedal, George + Marie Altman, Margaret A. Luebben, etc.

(Cont. Next page)

35494

Cass County, Minnesota, for Taxes for the Year 1961.

Table with columns: SOLD FOR TAXES, VALUATIONS BY SCHOOL DISTRICTS AS EQUALIZED BY DEPARTMENT OF TAXATION, Tax including State Homestead, SPECIAL TAXES, TOTAL TAXES, PAID, WHEN PAID, Number of Receipt, March Settlement, June Settlement, November Settlement, Collections to First Monday in January 1963, Delinquent on First Monday in January 1963, Total Delinquent Tax and Penalty, and REMARKS. Includes entries for Gladys Tjssedal, George + Marie Altman, Margaret A. Luebben, etc.

Vertical text on the right edge of the page: Filers Point, Woodland, DeMojines Beach, Horseshoe Bay, El Seno Beach, Harland's Lakeshore on Rainy Lake.

Assessment Roll and Tax List of Real Property in the Town of Powers

* Indicate Type of Property: R-Residential, C-Commercial, I-Industrial, U-Utility, F-Farm, L-Lakeshore, T-Timber, M-Mineral

Form SCD - MILLER-DAVIS CO., MINNEAPOLIS

Table with columns: IN WHOSE NAME ASSESSED, DESCRIPTION OF PROPERTY, TRUE AND FULL VALUATIONS (LAND, BUILDINGS, MACHINERY, TOTAL), ASSESSED VALUATIONS (RURAL, ALL OTHER, MACHINERY, Seasonal and Recreational Cabins, TOTAL ASSESSED VALUE, Total Assessed Value as Equalized by the Board of Review), FINAL EQUALIZED VALUE.

(Cont. Next Page)

Cass County, Minnesota, for Taxes for the Year 1961.

Table with columns: SOLD FOR TAXES, VALUATIONS BY SCHOOL DISTRICTS AS EQUALIZED BY DEPARTMENT OF TAXATION, Tax Including State Homestead, State Tax on Non-Homestead, SPECIAL TAXES, TOTAL TAXES, PAID, WHEN PAID, Number of Receipt, March Settlement, June Settlement, Penalty, November Settlement, Penalty, Collections to First Monday in January 1963, Delinquent on First Monday in January 1963, Total Delinquent Tax and Penalty, REMARKS.

26446
912
27354

15709

15710

15711

15712

Fileers Point Woodland Beach Horseshoe Junction El Suro Beach Healdsburg Healdsburg Lakeshore On Rainy Lake

Assessment Roll and Tax List of Real Property in the Town of Powers

* Indicate Type of Property: R-Residential, C-Commercial, I-Industrial, U-Utility, F-Farm, L-Lakeshore, T-Timber, M-Mineral

Table with columns: IN WHOSE NAME ASSESSED, DESCRIPTION OF PROPERTY, TRUE AND FULL VALUATIONS, ASSESSED VALUATIONS, and FINAL EQUALIZED VALUE. Includes entries for Elmer & Lida Lotz, Myrtle Willhoits, Elmer & Lida Lotz, Minnesota Powers & Light Co., Frances W. & Gladys S. Vaneps, Leslie & Gladys Sawyer, Backus Evergreen Cemetery, Village of Backus, James F. & Elsie S. Cada, Harold E. & Mildred M. Coanter, Ora & Robert Coon, Walter & Jeanette K. Dix, Frank C. & Winnifred S. Tibbetts, Harold U. & Irma Lotz.

Cass County, Minnesota, for Taxes for the Year 1961.

Table with columns: VALUATIONS BY SCHOOL DISTRICTS AS EQUALIZED BY DEPARTMENT OF TAXATION, Tax Including State Homestead, State Tax on Non-Homestead, SPECIAL TAXES, TOTAL TAXES, PAID, WHEN PAID, Number of Receipt, March Settlement, June Settlement, Penalty, November Settlement, Penalty, Collections to First Monday in January 1963, Delinquent on First Monday in January 1963, Total Delinquent Tax and Penalty, REMARKS. Includes entries for 1-20 with various tax amounts and payment dates.

Vertical text on the right edge of the page: Filers Point, Woodland, Des Moines Beach, Shoreline Beach, El Sueño Beach, Hartland's Lakeshore on Rainy Lake.

Assessment Roll and Tax List of Real Property in the Town of Powers

* Indicate Type of Property: R-Residential, C-Commercial, I-Industrial, U-Utility, F-Farm, L-Lakeshore, T-Timber, M-Mineral

Form 502 - MILLER-DAVIS CO., MINNEAPOLIS

Table with columns: IN WHOSE NAME ASSESSED, DESCRIPTION OF PROPERTY, TRUE AND FULL VALUATIONS, ASSESSED VALUATIONS, and FINAL EQUALIZED VALUE. Includes entries for Elmer & Ada Koty, Myrtle Wilhoit, Elmer & Ada Koty, Minnesota Powers & Light Co., Francis W. & Gladys S. Varney, Leslie & Gladys Sawyer, Backus Evergreen Cemetery Assn., Village of Backus, James F. & Elsie H. Cada, Harold E. & Mildred M. Counter, Ora & Robert Coon, Walter & Jeanette K. Dix, Frank C. & Winnifred S. Tibbitts, and Harold H. & Irma Koty.

Cass County, Minnesota, for Taxes for the Year 1962.

Table with columns: VALUATIONS BY SCHOOL DISTRICTS AS EQUALIZED BY DEPARTMENT OF TAXATION, Tax Including State Homestead, State Tax on Non-Homestead, SPECIAL TAXES, TOTAL TAXES, PAID, WHEN PAID, Number of Receipt, March Settlement 1962, June Settlement 1962, November Settlement 1962, Collections to First Monday in January 1963, Delinquent on First Monday in January 1963, Total Delinquent Tax and Penalty, and REMARKS. Includes entries for 1-20, with various tax amounts and payment dates.

Fillers Point, Woodland Beach, Des Moines Beach, Reshoe Bay, El Steno Beach, Lakewood Beach, Hatland's Lakeshore

Assessment Roll and Tax List of Real Property

Form 500 MILLER-DAVIS CO., MINNEAPOLIS

IN WHOSE NAME ASSESSED	DESCRIPTION OF PROPERTY				Acres
	SUBDIVISION	Sec. of Lot	Town or Block	Ring	
Gerald & Bernadine Eueland	7,158' of W. 130' of E. 500' of W. 550' of NW 1/4 of NW 1/4	32	139	30	
Claude & Mabel Wilharm	Part of East Part 1 between Cassin Creek & West of Aldo Shores				
	SW 1/4 of NE 1/4				
	SE 1/4 of NE 1/4				
Powers Township	7,183' of E. 53' of W. 100' of NW 1/4 of NW 1/4				
	NE 1/4 of NW 1/4				
	NW 1/4 of NW 1/4				
	SW 1/4 of NW 1/4				
	SE 1/4 of NW 1/4				
	NE 1/4 of SW 1/4				
	NW 1/4 of SW 1/4				
	SW 1/4 of SW 1/4				
	SE 1/4 of SW 1/4				
	NE 1/4 of SE 1/4				
	NW 1/4 of SE 1/4				
	SW 1/4 of SE 1/4				
	SE 1/4 of SE 1/4				

PART OF LOT 1 SEC. 32-139-30



Cass County, Minnesota, for Taxes for the Year 1961.

SOLD FOR TAXES	VALUATIONS BY SCHOOL DISTRICTS AS EQUALIZED BY DEPARTMENT OF TAXATION						Tax including State Homestead Mills	State Tax on Non-Homestead 9.12 Mills	SPECIAL TAXES	SPECIAL TAXES	TOTAL TAXES	PAID	WHEN PAID	Number of Receipt	March Settlement 1962	June Settlement 1962	Penalty	November Settlement 1962	Penalty	Collections to First Monday in January 1963	Penalty	Delinquent on First Monday in January 1963	Total Delinquent Tax and Penalty	REMARKS
	District No.	District No.	District No.	District No.	District No.	District No.																		
	Rate	Rate	Rate	Rate	Rate	Rate																		
1												HALF PAID NOV 19 1961	20890										15672 9776	
2												PAID IN FULL MAY 31 1962	13046		3170								18723	
20																							239	

Fillers Point
Woodland
Des Moines
Horseshoe Bay
El Sueno
Beach
Lamar's
Harland's Lakeshore
on Rainy Lake

Assessment Roll and Tax List of Real Property in the Town of Powers, Minnesota

Cass County, Minnesota, for Taxes for the Year 1961.

DEEDS MILLER-DAVIS CO., MINNEAPOLIS

* Indicate Type of Property: R-Residential, C-Commercial, I-Industrial, U-Utility, F-Farm, L-Lakeshore, T-Timber, M-Mineral

Table with columns for Description of Property, True and Full Valuations, Assessed Valuations, Valuations by School Districts, and Tax details. Includes handwritten entries for property owners like Albert & Adaline Blount and Frank E. & Florence W. Faulk.

Millers Point

Edo Shores

Woodland Beach

Des Moines Beach

Horseshoe Bay

El Sueño Beach

Wildmore Beach

Healand's Lakeshore on Rainy Lake

Assessment Roll and Tax List of Real Property in the Town of Powers

Form 5C MILLER-DAVIS CO., MINNEAPOLIS

* Indicate Type of Property: R-Residential, C-Commercial, I-Industrial, U-Utility, F-Farm, L-Lakeshore, T-Timber, M-Mineral

Millers Point Woodland

Table with columns: IN WHOSE NAME ASSESSED, SUBDIVISION, No. School District, Indicate Homestead, Agr. or Rec., Indicate Type of Property, TRUE AND FULL VALUATIONS (LAND, BUILDINGS, MACHINERY, TOTAL), ASSESSED VALUATIONS (RURAL, ALL OTHER, MACHINERY, Seasonal and Recreational Cabins, TOTAL ASSESSED VALUE, Total Assessed Value as Equalized by the Board of Review, FINAL EQUALIZED VALUE).

Cass County, Minnesota, for Taxes for the Year 1961.

Table with columns: SOLD FOR TAXES, VALUATIONS BY SCHOOL DISTRICTS AS EQUALIZED BY DEPARTMENT OF TAXATION (District No., Rate, Mills), Tax including State Homestead, State Tax on Non-Homestead, SPECIAL TAXES, TOTAL TAXES, PAID, WHEN PAID, Number of Receipt, March Settlement, June Settlement, November Settlement, Collections to First Monday in January, Delinquent on First Monday in January, Total Delinquent Tax and Penalty, REMARKS.

Elmo Shores Sandborn Beach Des Moines Lakeshore Elmo Beach El Seno Beach Elmo Beach Hartland Lakeshore on Rainy Lake

Assessment Roll and Tax List of Real Property in the Town of Powers, Minnesota

Form 5C MILLER-DAVIS CO., MINNEAPOLIS

* Indicate Type of Property: R-Residential, C-Commercial, I-Industrial, U-Utility, F-Farm, L-Lakeshore, T-Timber, M-Mineral

Table with columns: IN WHOSE NAME ASSESSED, SUBDIVISION, Sec. or Lot, Town or Block, Rng., Number of Acres of Land, No. School District, Indicate Homestead, Agri. or Forest, Indicate Type of Property, TRUE AND FULL VALUATIONS (LAND, BUILDINGS, MACHINERY, TOTAL), ASSESSED VALUATIONS (RURAL, ALL OTHER, MACHINERY, Seasonal and Recreational Cabins, TOTAL ASSESSED VALUE, Total Assessed Value as Equalized by the Board of Review, FINAL EQUALIZED VALUE).

Freeman E. Smith
Fred W. Mains
Fred C. & Alta S. Mains
Arthur & Rae Ellen Ruck
John & Marie W. Spillane
Jessie B. & Mattie Thompson
Henry & Emma Hecht

Cass County, Minnesota, for Taxes for the Year 1961.

Table with columns: SOLD FOR TAXES, VALUATIONS BY SCHOOL DISTRICTS AS EQUALIZED BY DEPARTMENT OF TAXATION (District No., Rate, etc.), Tax Including State Homestead, State Tax on Non-Homestead, SPECIAL TAXES, TOTAL TAXES, PAID, WHEN PAID, Number of Receipt, March Settlement, June Settlement, November Settlement, Collections to First Monday in January, Delinquent on First Monday in January, Total Delinquent Tax and Penalty, REMARKS.

1 76 2010 10 2080 PAID IN FULL MAY 24 1962 9726
2 16 422 14 436 2 PAID IN FULL MAY 24 1962 10153 4596
3 76 2010 10 2080 3 PAID IN FULL MAY 24 1962
4 16 464 14 478 4 PAID IN FULL MAY 4 1962 9674 478
PAID IN FULL MAY 3 1 1962 9368 2716
5 91 2634 82 2716 5 2nd HALF PAID OCT 3 1 1962 14469 9795
1st HALF PAID MAY 3 1 1962 11429 358
6 SOLD FOR TAXES 24 694 22 716 6 9784
7 H 3 86 7 PAID IN FULL MAY 1 4 1962 4663 9783
8 157 4544 144 4688 8 PAID IN FULL MAY 1 5 1962 4760 14813

4 3 = 4 3 4442
282 = 456 8722 416 13280
291 = 459 12864 12922 358

Millers Point
Woodland Beach
Des Moines Beach

Elmo Shores
Sandborn Heights
Bo Horsetoe Bay Beach
El Sueno Beach
Harland & Lakeshore on Fairy Lake

Assessment Roll and Tax List of Real Property in the Town of Powers

* Indicate Type of Property: R-Residential, C-Commercial, I-Industrial, U-Utility, F-Farm, L-Lakeshore, T-Timber, M-Mineral

Form 5C MILLER-DAVIS CO., MINNEAPOLIS

Table with columns: IN WHOSE NAME ASSESSED, SUBDIVISION, DESCRIPTION OF PROPERTY, TRUE AND FULL VALUATIONS, ASSESSED VALUATIONS, FINAL EQUALIZED VALUE.

Cass County, Minnesota, for Taxes for the Year 1961.

Table with columns: VALUATIONS BY SCHOOL DISTRICTS AS EQUALIZED BY DEPARTMENT OF TAXATION, Tax including State Homestead, State Tax on Non-Homestead, SPECIAL TAXES, TOTAL TAXES, PAID, WHEN PAID, Number of Receipt, March Settlement, June Settlement, November Settlement, Collections to First Monday in January 1963, Delinquent on First Monday in January 1963, Total Delinquent Tax and Penalty, REMARKS.

Millers Point, Woodland, Des Moines Beach, Horseshoe Beach

Elmo Shores, Sandborn Heights, Echo Hill, Larry Bay, El Sueño Beach, Hartland Lakeshore on Rainy Lake

Assessment Roll and Tax List of Real Property in the Town of Powers

Form 50 MILLER-DAVIS CO., MINNEAPOLIS

* Indicate Type of Property: R-Residential, C-Commercial, I-Industrial, U-Utility, F-Farm, L-Lakeshore, T-Timber, M-Mineral

Table with columns: IN WHOSE NAME ASSESSED, SUBDIVISION, No. School District, Indicate Homestead, Agricultural, Indicate Type of Property, TRUE AND FULL VALUATIONS (LAND, BUILDINGS, MACHINERY, TOTAL True and Full Value, RURAL, ALL OTHER, MACHINERY, Seasonal and Recreational Cabins, TOTAL ASSESSED VALUE, Total Assessed Value as Equalized by the Board of Review, FINAL EQUALIZED VALUE).

Cass County, Minnesota, for Taxes for the Year 1961.

Table with columns: SOLD FOR TAXES, VALUATIONS BY SCHOOL DISTRICTS AS EQUALIZED BY DEPARTMENT OF TAXATION (District No., Rate, Mills), Tax Including State Homestead, State Tax on Non-Homestead, SPECIAL TAXES, TOTAL TAXES, PAID, WHEN PAID (Month, Day, Year), Number of Receipt, March Settlement, June Settlement, Penalty, November Settlement, Penalty, Collections to First Monday in January 1963, Penalty, Delinquent on First Monday in January 1963, Total Delinquent Tax and Penalty, REMARKS.

Miller's Point, Woodland Beach, Des Moines Beach, Horseshoe Beach

Elido Shore, Sandborn Heights, Echo Hill, Bay, El Sueno Beach, Harland's Lakeshore on Rainy Lake

Assessment Roll and Tax List of Real Property in the Town of Powers

* Indicate Type of Property: R-Residential, C-Commercial, I-Industrial, U-Utility, F-Farm, L-Lakeshore, T-Timber, M-Mineral

Cass County, Minnesota, for Taxes for the Year 1961.

B.S.C. MILLER-DAVIS CO., MINNEAPOLIS

Table with columns: IN WHOSE NAME ASSESSED, SUBDIVISION, Description of Property, True and Full Valuations (Rural, All Other, Machinery, Seasonal and Recreational Cabins, Total Assessed Value), Final Equalized Value, Sold for Taxes, Valuations by School Districts, Tax Including State Homestead, State Tax on Non-Homestead, Special Taxes, Total Taxes, PAID, WHEN PAID, Number of Receipt, March Settlement 1962, June Settlement 1962, November Settlement 1962, Collections to First Monday in January 1963, Delinquent on First Monday in January 1963, Total Delinquent Tax and Penalty, REMARKS.

Woodland Beach, Des Moines Beach, Luroy Horseshoe Beach, El Sueno Beach, Wildmere Beach, Haaland's Lakeshore on Rainy Lake

Hardwood Point, Sandborn Heights, Echo Hill, Billingsley's, Plat Of Vincent's Greer's Birch

Assessment Roll and Tax List of Real Property in the Town of Powers

* Indicate Type of Property: R-Residential, C-Commercial, I-Industrial, U-Utility, F-Farm, L-Lakeshore, T-Timber, M-Mineral

Form 50 MILLER-DAVIS CO., MINNEAPOLIS

Table with columns: IN WHOSE NAME ASSESSED, SUBDIVISION, No. School District, Indicate Homestead, Agri. or Recr., Indicate Type of Property, TRUE AND FULL VALUATIONS (LAND, BUILDINGS, MACHINERY, TOTAL True and Full Value), RURAL, ALL OTHER, MACHINERY, Seasonal and Recreational Cabins, TOTAL ASSESSED VALUE, Total Assessed Value as Equalized by the Board of Review, FINAL EQUALIZED VALUE.

Cass County, Minnesota, for Taxes for the Year 1961.

Table with columns: SOLD FOR TAXES, VALUATIONS BY SCHOOL DISTRICTS AS EQUALIZED BY DEPARTMENT OF TAXATION, Tax Including State Homestead, State Tax on Non-Homestead, SPECIAL TAXES, TOTAL TAXES, PAID, WHEN PAID, Number of Receipt, March Settlement, June Settlement, Penalty, November Settlement, Penalty, Collections to First Monday in January 1963, Delinquent on First Monday in January 1963, Total Delinquent Tax and Penalty, REMARKS.

Vertical text on the left edge: Eldo Shores, Sandborn Heights, Des Moines, Lyray Horseshoe Beach, El Sueno, Haaland's Lakeshore on Rainy Lake, Wildmere Beach, El Sueno, Lyray Horseshoe Beach, Sandborn Heights, Eldo Shores.

Vertical text on the right edge: Hardwood Point Estates, Northern Hill, Echo Hill, 8111 1/2, Plat Of Vincent's Sugar's Birch Wood Acres.

Assessment Roll and Tax List of Real Property in the Town of Powers, Cass County, Minnesota, for Taxes for the Year 1961.

Form 50 MILLER-DAVIS CO., MINNEAPOLIS

* Indicate Type of Property: R-Residential, C-Commercial, I-Industrial, U-Utility, F-Farm, L-Lakeshore, T-Timber, M-Mineral

Table with columns: IN WHOSE NAME ASSESSED, SUBDIVISION, DESCRIPTION OF PROPERTY, TRUE AND FULL VALUATIONS, ASSESSED VALUATIONS, and FINAL EQUALIZED VALUE. Includes entries for Blanche J. + Clifford W. Jarvis, Clara M. Rothamer, and others.

Cass County, Minnesota, for Taxes for the Year 1961.

Table with columns: SOLD FOR TAXES, VALUATIONS BY SCHOOL DISTRICTS AS EQUALIZED BY DEPARTMENT OF TAXATION, SPECIAL TAXES, TOTAL TAXES, PAID, WHEN PAID, and REMARKS. Includes handwritten entries for tax amounts and payment dates.

Vertical text on the left edge: Eldo Shores, Sandborn Heights, Echo Hill, Gillispie's Sub-Div., Wilcmere Beach, Haaland's Lakeshore on Rainy Lake.

Vertical text on the right edge: Hardwood, Northern, Plac Of Vincent's Mgr's Birch 4 Pint Shores Wood Acres.

Assessment Roll and Tax List of Real Property in the Town of Powers

* Indicate Type of Property: R-Residential, C-Commercial, I-Industrial, U-Utility, F-Farm, L-Lakeshore, T-Timber, M-Mineral

Form 50 MILLER-DAVIS CO., MINNEAPOLIS

Table with columns: IN WHOSE NAME ASSESSED, SUBDIVISION, DESCRIPTION OF PROPERTY, TRUE AND FULL VALUATIONS, ASSESSED VALUATIONS, and FINAL EQUALIZED VALUE.

Cass County, Minnesota, for Taxes for the Year 1961.

Table with columns: SOLD FOR TAXES, VALUATIONS BY SCHOOL/DISTRICTS AS EQUALIZED BY DEPARTMENT OF TAXATION, SPECIAL TAXES, TOTAL TAXES, PAID, WHEN PAID, Number of Receipt, March Settlement, June Settlement, November Settlement, Collections to First Monday in January, Delinquent on First Monday in January, Total Delinquent Tax and Penalty, and REMARKS.

Vertical text on the left margin: Elco Shores, Sandborn Heights, Echo Hill, Gilligle's Sub-Div., Wildman's Lake, Plat of Vincent's 4 Point Shores.

Vertical text on the right margin: Harwood Estates, Northern Estates, Vincent's Ox Lake, Enger's Birch Wood Acres.

Assessment Roll and Tax List of Real Property in the Town of Powers,
 * Indicate Type of Property: R-Residential, C-Commercial, I-Industrial, U-Utility, F-Farm, L-Lakeshore, T-Timber, M-Mineral

Form 50 MILLER-DAVIS CO., MINNEAPOLIS

IN WHOSE NAME ASSESSED	DESCRIPTION OF PROPERTY				No. School District	Indi- rate Home- stead Yes or No	Agriculture Recr. Yes or No	Indicate Type of Property	TRUE AND FULL VALUATIONS				ASSESSED VALUATIONS							FINAL EQUALIZED VALUE Dollars			
	SUBDIVISION	Sec. or Lot	Town or Block	Rng.					Number of Acres of Land	LAND Exclusive of Structures and Improvements	BUILDINGS and Other Structures	MACHINERY Permanently Attached to Real Estate	TOTAL True and Full Value	RURAL		ALL OTHER			MACHINERY Permanently Attached to Real Estate		Seasonal and Recreational Cabins	TOTAL ASSESSED VALUE	Total Assessed Value as Equalized by the Board of Review
														Acres	100ths	Homestead Up to \$4,000 20%	Over \$4,000 and Non-Homestead 33 1/3%	Timber Land Class 3e 20%					
Eugene Walter + Donna C. Wroe	Hardwood Point	1			114	No	No	L															
" " " "	Parts of Sant Sub 6, Sec. 28-139-30	2			70	"	R																
" " " "		3			70	"	L																
Robert L. + Lois E. Christison		4			No	"	"																
Eugene Walter + Donna C. Wroe		5			No	"	"																
" " " "		6			No	"	"																
" " " "		7			No	"	"																
		8																					
		9																					
		10																					
		11																					
		12																					
		13																					
		14																					
		15																					
		16																					
		17																					
		18																					
		19																					
		20																					

Cass County, Minnesota, for Taxes for the Year 1961.

SOLD FOR TAXES	VALUATIONS BY SCHOOL DISTRICTS AS EQUALIZED BY DEPARTMENT OF TAXATION						Tax Including State Homestead	State Tax on Non-Homestead	SPECIAL TAXES	SPECIAL TAXES	TOTAL TAXES	PAID	WHEN PAID	Number of Receipt	March Settlement 1962	June Settlement 1962	Penalty	November Settlement 1962	Penalty	Collections to First Monday in January 1963	Penalty	Delinquent on First Monday in January 1963	Total Delinquent Tax and Penalty	REMARKS																
	District No.	District No.	District No.	District No.	District No.	District No.																			Rate	Rate	Rate	Rate	Rate	Rate	Rate	Rate	Rate	Rate	Rate	Rate	Rate	Rate	Rate	Rate
	Mills	Mills	Mills	Mills	Mills	Mills																			Mills	Mills	Mills	Mills	Mills	Mills	Mills	Mills	Mills	Mills	Mills	Mills	Mills	Mills	Mills	Mills
1							578	18			596	1 PAID IN FULL FEB 23 1962		596									15892																	
2						140	4052	128			4180	2 PAID IN FULL FEB 23 1962	7300	4180																										
3						20	578	18			596	3 PAID IN FULL FEB 23 1962		596																										
4						100	2894	92			2986	4 PAID IN FULL MAY 4 1962	9672	2986									167001																	
5						20	578	18			596	5 PAID IN FULL FEB 23 1962		596									15892																	
6						20	578	18			596	6 PAID IN FULL FEB 23 1962	7300	596																										
7						20	578	18			596	7 PAID IN FULL FEB 23 1962		596																										
8																																								
9																																								
10																																								
11																																								
12																																								
13																																								
14																																								
15																																								
16																																								
17																																								
18																																								
19																																								
20																																								
							370	9836	310		10146			7160	2986																									

Hardwood Point
 Sandborn Heights
 Echo Hill
 Gillispie's Sub-51
 Vincent's Oxyoke Shores
 Wood Acres

Northern Districts

Assessment Roll and Tax List of Real Property in the Town of Powers, Minnesota

* Indicate Type of Property: R-Residential, C-Commercial, I-Industrial, U-Utility, F-Farm, L-Lakeshore, T-Timber, M-Mineral

Form 50 MILLER-DAVIS CO., MINNEAPOLIS

Table with columns: IN WHOSE NAME ASSESSED, SUBDIVISION, Sec. of Lot, Town or Block, Ring, Number of Acres of Land, No. School District, Indicate Homestead, Agri. or Recr. Yes or No, Indicate Type of Property, TRUE AND FULL VALUATIONS (LAND, BUILDINGS, MACHINERY, TOTAL), ASSESSED VALUATIONS (RURAL, ALL OTHER, MACHINERY, Seasonal and Recreational Cabins, TOTAL ASSESSED VALUE, Total Assessed Value as Equalized by the Board of Review, FINAL EQUALIZED VALUE).

Cass County, Minnesota, for Taxes for the Year 1961.

Table with columns: VALUATIONS BY SCHOOL DISTRICTS AS EQUALIZED BY DEPARTMENT OF TAXATION (District No., Rate, Mills), Tax including State Homestead, State Tax on Non-Homestead, SPECIAL TAXES, TOTAL TAXES, PAID, WHEN PAID (Month, Day, Year), Number of Receipt, March Settlement 1962, June Settlement 1962, Penalty, November Settlement 1962, Penalty, Collections to First Monday in January 1963, Penalty, Delinquent on First Monday in January 1963, Total Delinquent Tax and Penalty, REMARKS.

Vertical text on the left margin: at Handwood Point, Northern Estates, Sandbar, Echo Hill, Callispie's Sub-Pl., Vincent's Oxyoke Shores, Birch Vincent's Oxyoke Wood Acres.

