

Assessment & Tax List - 115

Powers

SUMMARY OF TAX COLLECTION

Original Levy	- - - - -	\$ 16,732.50	
Additions	- - - - -	\$ 12.84	
			\$ 16,745.34
Abatements	- - - - -	\$ 263.06	
			\$ 16,482.28

COLLECTIONS

March Settlement	- - - - -	\$ 2,607.37	
June Settlement	- - - - -	\$ 8981.08	
November Settlement	- - - - -	\$ 3,047.81	
January Settlement	- - - - -	\$ 15.13	\$ 14,651.39
			\$
Over Collected	- - - - -	\$ 41.08	
Under Collected	- - - - -	\$ 1.22	
Delinquent	- - - - -	\$ 1,871.95	\$ 1,830.89
Total	- - - - -		\$ 16,482.28

Assessment Roll and Tax List of Real Property in the Town of Powers, Cass County, Minnesota

Cass County, Minnesota, for Taxes for the Year 1958.

Table with columns: IN WHOSE NAME ASSESSED, TO WHOM TRANSFERRED, DESCRIPTION OF PROPERTY, TRUE AND FULL VALUATIONS, ASSESSED VALUATIONS, FINAL EQUALIZED VALUE.

Table with columns: VALUATIONS BY SCHOOL DISTRICTS AS EQUALIZED BY DEPARTMENT OF TAXATION, TAXES, PAID, WHEN PAID, Number of Receipt, March Settlement, June Settlement, November Settlement, Collections to First Monday in January in 1960, Delinquent on First Monday in January 1960, Total Delinquent Tax and Penalty, REMARKS.

Assessment Roll and Tax List of Real Property in the Town of Powers, Minnesota

Cass County, Minnesota, for Taxes for the Year 1958.

Table with columns: IN WHOSE NAME ASSESSED, TO WHOM TRANSFERRED, DESCRIPTION OF PROPERTY, TRUE AND FULL VALUATIONS, ASSESSED VALUATIONS, and FINAL EQUALIZED VALUE.

Table with columns: SOLD FOR TAXES, VALUATIONS BY SCHOOL DISTRICTS AS EQUALIZED BY DEPARTMENT OF TALLION, Tax including State Homestead, SPECIAL TAXES, TOTAL TAXES, PAID, WHEN PAID, Number of Receipt, March Settlement 1959, June Settlement 1959, Penalty, November Settlement 1959, Penalty, Collections to First Monday in January 1960, Penalty, Delinquent on First Monday in January 1960, Total Delinquent Tax and Penalty, and REMARKS.

Assessment Roll and Tax List of Real Property in the Town of Powers, Cass County, Minnesota, for Taxes for the Year 1958.

Cass County, Minnesota, for Taxes for the Year 1958.

Form SCD 1-15-58 MINN. STAT. ANN. § 263.01

Table with columns: IN WHOSE NAME ASSESSED, TO WHOM TRANSFERRED, DESCRIPTION OF PROPERTY, TRUE AND FULL VALUATIONS, ASSESSED VALUATIONS, and FINAL EQUALIZED VALUE.

Table with columns: VALUATIONS BY SCHOOL DISTRICTS AS EQUALIZED BY DEPARTMENT OF TAXATION, SOLD FOR TAXES, PAID, WHEN PAID, Number of Receipt, March Settlement 1959, June Settlement 1959, Penalty, November Settlement 1959, Collections to First Monday in January 1960, Delinquent on First Monday in January 1960, Total Delinquent Tax and Penalty, and REMARKS.

Woodland Beach, Lakeview Beach, Reservoir Beach, Reservoir Beach, Troy Bay, Sunnyside, Wilmore Beach

Assessment Roll and Tax List of Real Property in the Town of Powers, Cass County, Minnesota

* Indicate Type of Property: R-Residential, C-Commercial, I-Industrial, U-Utility, F-Farm, L-Lakeshore, T-Timber, M-Mineral

Table with columns: IN WHOSE NAME ASSESSED, TO WHOM TRANSFERRED, DESCRIPTION OF PROPERTY, TRUE AND FULL VALUATIONS, ASSESSED VALUATIONS, and FINAL EQUALIZED VALUE. Includes handwritten entries for various property owners like LaVene & Martha L. Vincent.

Cass County, Minnesota, for Taxes for the Year 1958.

Table with columns: SOLD FOR TAXES, VALUATIONS BY SCHOOL DISTRICTS AS EQUALIZED BY DEPARTMENT OF TAXATION, Tax including State Homestead, State Tax on Non-Homestead, SPECIAL TAXES, TOTAL TAXES, PAID, WHEN PAID, Number of Receipts, March Settlement 1959, June Settlement 1959, Penalty, November Settlement 1959, Penalty, Collections to First Monday in January 1960, Penalty, Delinquent on First Monday in January 1960, Total Delinquent Tax and Penalty, REMARKS. Includes handwritten entries and calculations.

Assessment Roll and Tax List of Real Property in the Town of Powers

Cass County, Minnesota, for Taxes for the Year 1958.

Form 300 (REV. 5-15-57) INDIANAPOLIS, INDIANA
* Indicate Type of Property: R-Residential, C-Commercial, I-Industrial, U-Utility, F-Farm, L-Lakeshore, T-Timber, M-Mineral

IN WHOSE NAME ASSESSED	TO WHOM TRANSFERRED	DESCRIPTION OF PROPERTY				No. School District	Indicate Homestead Yes or No	Indicate Agricultural Yes or No	Indicate Type of Property	TRUE AND FULL VALUATIONS				ASSESSED VALUATIONS					FINAL EQUALIZED VALUE				
		SUBDIVISION	Sec. or Lot	Town or Block	Reg.					Number of Acres of Land	LAND Exclusive of Structures and Improvements	BUILDINGS and Other Structures	MACHINERY Permanently Attached to Real Estate	TOTAL True and Full Value	RURAL			ALL OTHER		MACHINERY Permanently Attached to Real Estate	TOTAL ASSESSED VALUE	Total Assessed Value as Equalized by the Board of Review	
															Acres	100ths	Dollars	Dollars					Dollars
Richard B. & Esther M. Gillespie		E. 20' of W. 185' of Lot 1				11 139 30	23	U	L		21					7		7					
"	"	W. 100' of E. 175' of Lot 77					150	"	"		39					12		13					
H. M. Shimmie		Part of Lot 2: Vacated lots 8, 9, 10 of Survey by street along E. 1/2 side of Lot 8, 9, 10						"	"		120					40		40					
Anthony J. & Charlotte H. Deblon		SE 1/4 of NE 1/4						70	L		45					15		15					
		NE 1/4 of NW 1/4																					
		NW 1/4 of NW 1/4																					
		SW 1/4 of NW 1/4																					
		SE 1/4 of NW 1/4																					
		NE 1/4 of SW 1/4																					
		NW 1/4 of SW 1/4																					
		SW 1/4 of SW 1/4																					
		SE 1/4 of SW 1/4																					
		NE 1/4 of SE 1/4																					
		NW 1/4 of SE 1/4																					
		SW 1/4 of SE 1/4																					
		SE 1/4 of SE 1/4																					
						173				225					75		75						

SOLD FOR TAXES	VALUATIONS BY SCHOOL DISTRICTS AS EQUALIZED BY DEPARTMENT OF TAXATION						Tax including State Homestead	State Tax on Non-Homestead	SPECIAL TAXES	TOTAL TAXES	PAID	WHEN PAID	Number of Receipt	March Settlement 1959	June Settlement 1959	Penalty	November Settlement 1959	Penalty	Collections to First Monday in January 1960	Penalty	Delinquent on First Monday in January 1960	Total Delinquent Tax and Penalty	REMARKS
	District No.	District No.	District No.	District No.	District No.	District No.																	
	Rate	Rate	Rate	Rate	Rate	Rate																	
1																							
2																							10695
3																							
4																							10701
5																							
6																							
7																							
8																							
9																							
10																							
11																							
12																							
13																							
14																							
15																							
16																							
17																							
18																							
19																							
20																							

Miller's
Woodland
Deafoines Beach
resnoe Beach
Fulroy Bay
Sweeny
Hildner Beach

Assessment Roll and Tax List of Real Property in the Town of Powers, Cass County, Minnesota, for Taxes for the Year 1958.

Form SCD 1957-58

Main table with columns: IN WHOSE NAME ASSESSED, TO WHOM TRANSFERRED, DESCRIPTION OF PROPERTY, TRUE AND FULL VALUATIONS, ASSESSED VALUATIONS, VALUATIONS BY SCHOOL DISTRICTS AS EQUALIZED BY DEPARTMENT OF TAXATION, SOLD FOR TAXES, PAID, WHEN PAID, Number of Receipt, March Settlement 1959, June Settlement 1959, Penalty, Collections to First Monday in January 1960, Delinquent on First Monday in January 1960, Total Delinquent Tax and Penalty, REMARKS.

Vertical text on the right edge of the page, including 'Woodland', 'DeSnoires Beach', 'Pesioe Beach', 'Fulroy Bay', 'Susse', 'Willmore Beach'.

Assessment Roll and Tax List of Real Property in the Town of Powers

* Indicate Type of Property: R-Residential, C-Commercial, I-Industrial, U-Utility, F-Farm, L-Lakeshore, T-Timber, M-Mineral

Cass County, Minnesota, for Taxes for the Year 1958.

Table with columns: IN WHOSE NAME ASSESSED, TO WHOM TRANSFERRED, DESCRIPTION OF PROPERTY, TRUE AND FULL VALUATIONS, ASSESSED VALUATIONS, VALUATIONS BY SCHOOL DISTRICTS AS EQUALIZED BY DEPARTMENT OF TAXATION, SOLD FOR TAXES, PAID, WHEN PAID, Number of Receipt, March Settlement 1959, June Settlement 1959, Penalty, November Settlement 1959, Penalty, Collections to First Monday in January 1960, Penalty, Delinquent on First Monday in January 1960, Total Delinquent Tax and Penalty, REMARKS.

Myron S. + Beulah Griffith
Lulu + Henry Husmann
Blanche Zaffke
State of Minnesota
Lulu + Henry Husmann
Lila S. + Moses J. Zaffke
Larna + Jay Hamilton
State of Minnesota
State of Minnesota
Blanche Zaffke

11-12-59
13.88 Abated
10729
10567
10512
Cancelled Pen.
9.58 Abated
10569
10586
10728
10728
10728
1160' 41
936x
1204x
1360x
1226x
23.46 Abated

Woodland
Peshobins Beach
Jesio Beach
Lafroy Bay
Guano
Wildmore Beach

Assessment Roll and Tax List of Real Property in the Town of Powers, Cass County, Minnesota

Cass County, Minnesota, for Taxes for the Year 1958.

Table with columns: IN WHOSE NAME ASSESSED, TO WHOM TRANSFERRED, DESCRIPTION OF PROPERTY, TRUE AND FULL VALUATIONS, ASSESSED VALUATIONS, VALUATIONS BY SCHOOL DISTRICTS AS EQUALIZED BY DEPARTMENT OF TAXATION, SOLD FOR TAXES, PAID, WHEN PAID, Number of Receipt, March Settlement 1959, June Settlement 1959, Penalty, November Settlement 1959, Penalty, Collections to First Monday in January 1960, Penalty, Delinquent on First Monday in January 1960, Total Delinquent Tax and Penalty, REMARKS.

Assessment Roll and Tax List of Real Property in the Town of Powers, Minnesota

Form 500 BILLS-SALE PROPERTY, MINNESOTA. * Indicate Type of Property: R-Residential, C-Commercial, I-Industrial, U-Utility, F-Farm, L-Lakeshore, T-Timber, M-Mineral

Table with columns: IN WHOSE NAME ASSESSED, TO WHOM TRANSFERRED, DESCRIPTION OF PROPERTY, TRUE AND FULL VALUATIONS, ASSESSED VALUATIONS, FINAL EQUALIZED VALUE. Includes handwritten entries for Jean Mc Dowell and others.

Cass County, Minnesota, for Taxes for the Year 1958.

Table with columns: SOLD FOR TAXES, VALUATIONS BY SCHOOL DISTRICTS AS EQUALIZED BY DEPARTMENT OF TAXATION, Tax including State Homestead, SPECIAL TAXES, TOTAL TAXES, PAID, WHEN PAID, Number of Receipt, March Settlement 1959, June Settlement 1959, Penalty, November Settlement 1959, Collections to First Monday in January 1960, Delinquent on First Monday in January 1960, Total Delinquent Tax and Penalty, REMARKS.

Assessment Roll and Tax List of Real Property in the Town of Powers

Cass County, Minnesota, for Taxes for the Year 1958.

Form SCD 1-1-58 MINN. DEPT. OF REVENUE, ST. PAUL, MINN. Indicate Type of Property: R-Residential, C-Commercial, I-Industrial, U-Utility, F-Farm, L-Lakeshore, T-Timber, M-Mineral

Table with columns: IN WHOSE NAME ASSESSED, TO WHOM TRANSFERRED, SUBDIVISION, TRUE AND FULL VALUATIONS, ASSESSED VALUATIONS, FINAL EQUALIZED VALUE. Includes handwritten entries for names like Blanche Zaffke and Lucille Arine Jew.

Table with columns: SOLD FOR TAXES, VALUATIONS BY SCHOOL DISTRICTS AS EQUALIZED BY DEPARTMENT OF TAXATION, TAXES, PAID, WHEN PAID, Number of Receipt, March Settlement, June Settlement, Penalty, November Settlement, Penalty, Collections to First Monday in January 1960, Delinquent on First Monday in January 1960, Total Delinquent Tax and Penalty, REMARKS. Includes handwritten notes and dates.

Vertical text on the right edge of the page, possibly a page number or reference.

Assessment Roll and Tax List of Real Property in the Town of Powers, of Powers, Minnesota

Cass County, Minnesota, for Taxes for the Year 1958.

Table with columns: IN WHOSE NAME ASSESSED, TO WHOM TRANSFERRED, DESCRIPTION OF PROPERTY, TRUE AND FULL VALUATIONS, ASSESSED VALUATIONS, VALUATIONS BY SCHOOL DISTRICTS AS EQUALIZED BY DEPARTMENT OF TAXATION, SOLD FOR TAXES, PAID, WHEN PAID, Number of Receipt, March Settlement 1959, June Settlement 1959, November Settlement 1959, Collections to First Monday in January 1960, Delinquent on First Monday in January 1960, Total Delinquent Tax and Penalty, REMARKS.

Assessment Roll and Tax List of Real Property in the Town of Powers, Cass County, Minnesota, for Taxes for the Year 1958.

Cass County, Minnesota, for Taxes for the Year 1958.

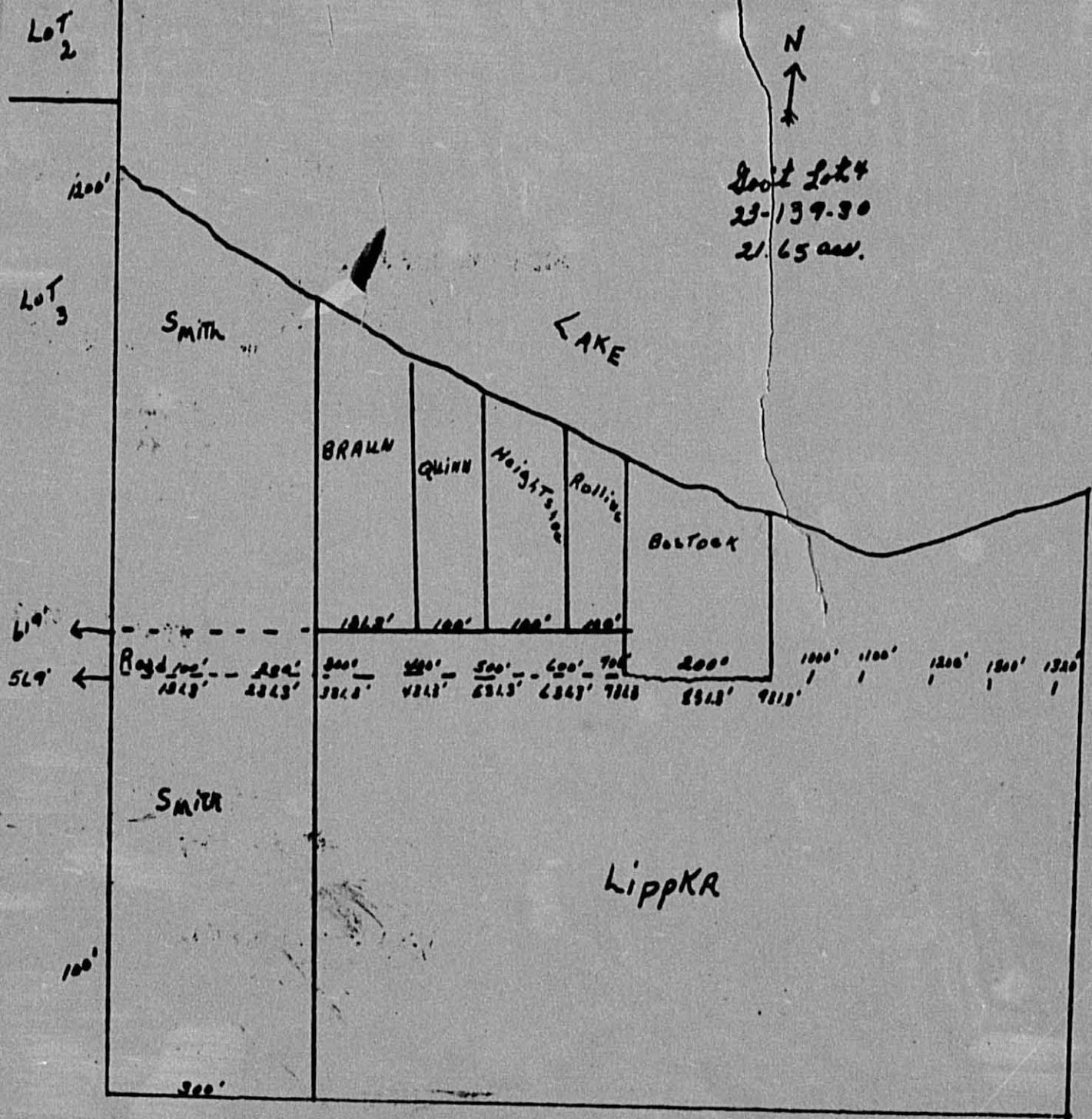
Form 500-1 (REV. 5-15-57) MINN. STAT. ANN. § 263.01

* Indicate Type of Property: R-Residential, C-Commercial, I-Industrial, U-Utility, F-Farm, L-Lakeshore, T-Timber, M-Mineral

Table with columns: IN WHOSE NAME ASSESSED, TO WHOM TRANSFERRED, DESCRIPTION OF PROPERTY, TRUE AND FULL VALUATIONS, ASSESSED VALUATIONS, VALUATIONS BY SCHOOL DISTRICTS AS EQUALIZED BY DEPARTMENT OF TAXATION, TAXES, PAID, WHEN PAID, Number of Receipt, March Settlement 1959, June Settlement 1959, November Settlement 1959, Collections to First Monday in January 1960, Delinquent on First Monday in January 1960, Total Delinquent Tax and Penalty, REMARKS.

Continued Next Page

Woodland Park Estates Beach Reshoe Beach Tully Bay Swano Wildmore Beach



Lot 2

1200'

Lot 3

SMITH

BRAUN

QUINN

Heigtsie

Rollins

Bostock

LAKE

N



Section 24
23-139.30
21.65 ac.

619'

519'

Road 100'

100'

SMITH

Lippka

300'

1843'

2243'

3043'

4243'

5243'

6243'

7243'

8243'

9113'

1000'

1100'

1200'

1300'

1320'

Assessment Roll and Tax List of Real Property in the Town of Powers

Cass County, Minnesota, for Taxes for the Year 1958.

Form 300... Indicate Type of Property: R-Residential, C-Commercial, I-Industrial, U-Utility, F-Farm, L-Lakeshore, T-Timber, M-Mineral

Table with columns: IN WHOSE NAME ASSESSED, TO WHOM TRANSFERRED, DESCRIPTION OF PROPERTY, TRUE AND FULL VALUATIONS, ASSESSED VALUATIONS, and FINAL EQUALIZED VALUE.

Table with columns: VALUATIONS BY SCHOOL DISTRICTS AS EQUALIZED BY DEPARTMENT OF TAXATION, TAXES, PAID, WHEN PAID, and REMARKS.

Woodland... Beach... Bay... Wildmore Beach

Assessment Roll and Tax List of Real Property in the Town of Power, Cass County, Minnesota, for Taxes for the Year 1958.

Cass County, Minnesota, for Taxes for the Year 1958.

Table with columns: IN WHOSE NAME ASSESSED, TO WHOM TRANSFERRED, DESCRIPTION OF PROPERTY, TRUE AND FULL VALUATIONS, ASSESSED VALUATIONS, VALUATIONS BY SCHOOL DISTRICTS AS EQUALIZED BY DEPARTMENT OF TAXATION, SOLD FOR TAXES, SPECIAL TAXES, TOTAL TAXES, PAID, WHEN PAID, Number of Receipt, March Settlement 1959, June Settlement 1959, November Settlement 1959, Collections to First Monday in January 1960, Delinquent on First Monday in January 1960, Total Delinquent Tax and Penalty, REMARKS.

Woodland Pastures Beach
Snohomish Beach
Tillamook Beach

Assessment Roll and Tax List of Real Property in the Town of Powers, Cass County, Minnesota

* Indicate Type of Property: R-Residential, C-Commercial, I-Industrial, U-Utility, F-Farm, L-Lakeshore, T-Timber, M-Mineral

Table with columns: IN WHOSE NAME ASSESSED, TO WHOM TRANSFERRED, DESCRIPTION OF PROPERTY, TRUE AND FULL VALUATIONS, ASSESSED VALUATIONS, FINAL EQUALIZED VALUE. Includes handwritten entries for Northern Shores, Inc., Clifford J. & Grace S. Snyder, Geneva Bondy, Henry C. & Vernice E. Montman, Ruth & Floyd Skinner, Archie M. & Ruby A. Bacon.

Cass County, Minnesota, for Taxes for the Year 1958.

Table with columns: SOLD FOR TAXES, VALUATIONS BY SCHOOL DISTRICTS AS EQUALIZED BY DEPARTMENT OF TAXATION, Tax including State Homestead, State Tax on Non-Homestead, SPECIAL TAXES, TOTAL TAXES, PAID, WHEN PAID, Number of Receipt, March Settlement 1959, June Settlement 1959, November Settlement 1959, Collections to First Monday in January 1960, Delinquent on First Monday in January 1960, Total Delinquent Tax and Penalty, REMARKS. Includes handwritten entries for 'PAID IN FULL' and various dates.

Vertical text on the right edge of the page: Woodland, Des Moines Beach, Reshoe Beach, Lufloy Bay, Suno, Wildmere Beach.

Assessment Roll and Tax List of Real Property in the Town of Powers

Cass County, Minnesota, for Taxes for the Year 1958.

Indicate Type of Property: R-Residential, C-Commercial, I-Industrial, U-Utility, F-Farm, L-Lakeshore, T-Timber, M-Mineral

Table with columns: IN WHOSE NAME ASSESSED, TO WHOM TRANSFERRED, DESCRIPTION OF PROPERTY, TRUE AND FULL VALUATIONS, ASSESSED VALUATIONS, FINAL EQUALIZED VALUE. Includes handwritten entries for Gladys Tysedal, Edwin Falk, Margaret A. Luebben, etc.

Table with columns: VALUATIONS BY SCHOOL DISTRICTS AS EQUALIZED BY DEPARTMENT OF TAXATION, TAX INCLUDING STATE HOMESTEAD, SPECIAL TAXES, TOTAL TAXES, PAID, WHEN PAID, Number of Receipt, March Settlement 1959, June Settlement 1959, November Settlement 1959, Collections to First Monday in January 1960, Delinquent on First Monday in January 1960, Total Delinquent Tax and Penalty, REMARKS. Includes handwritten entries for tax payments and dates.

Vertical text on the right edge of the page, including 'Woodland Beach', 'Pashoe Beach', 'Rufey Bay', 'Sano', 'Wildmere Beach'.

Assessment Roll and Tax List of Real Property in the Town of Powers, Cass County, Minnesota, for Taxes for the Year 1958.

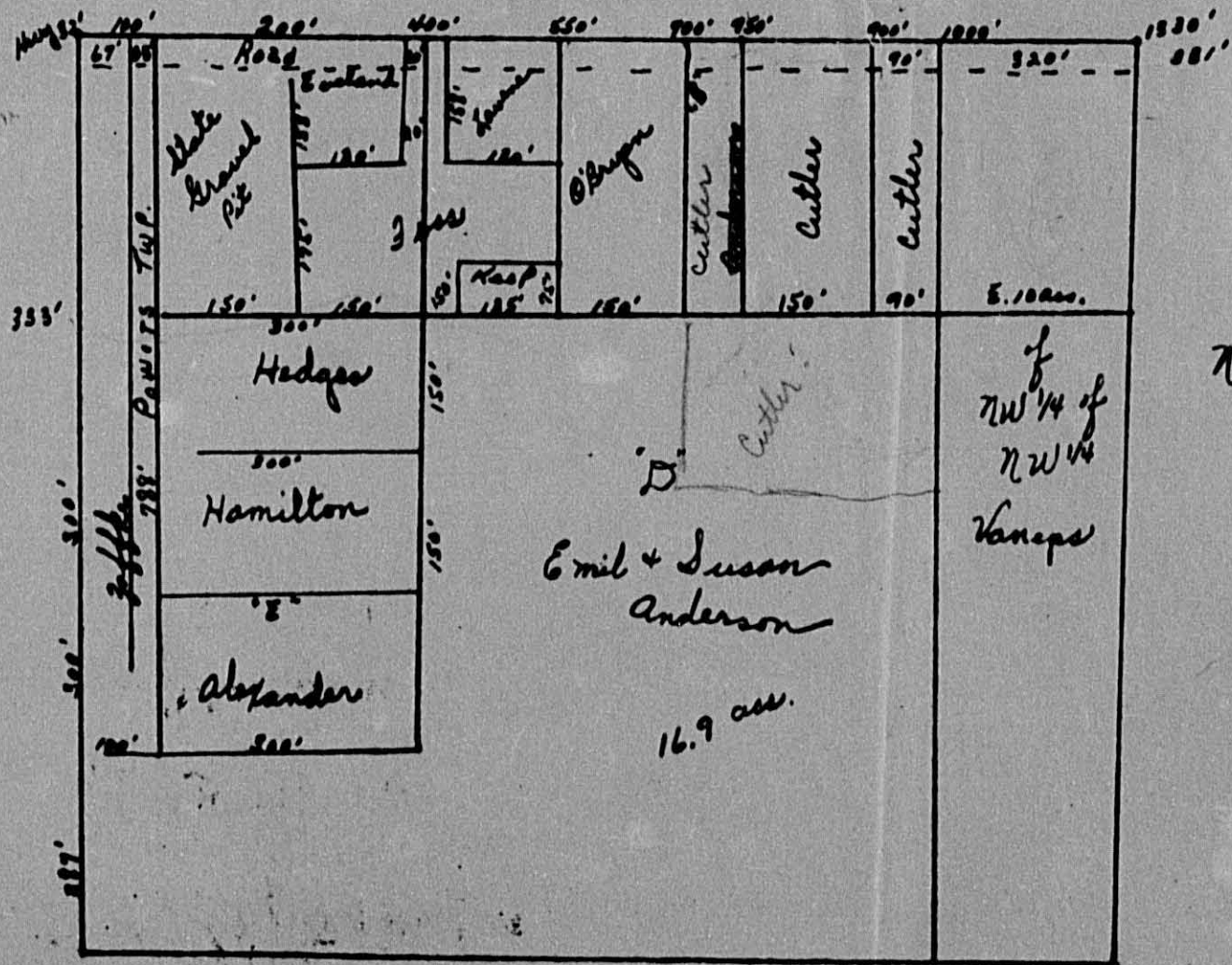
Table with columns: IN WHOSE NAME ASSESSED, TO WHOM TRANSFERRED, DESCRIPTION OF PROPERTY, TRUE AND FULL VALUATIONS, ASSESSED VALUATIONS, VALUATIONS BY SCHOOL DISTRICTS AS EQUALIZED BY DEPARTMENT OF TAXATION, SOLD FOR TAXES, PAID, WHEN PAID, Number of Receipt, March Settlement 1959, June Settlement 1959, November Settlement 1959, Collections to First Monday in January 1960, Delinquent on First Monday in January 1960, Total Delinquent Tax and Penalty, REMARKS.

Assessment Roll and Tax List of Real Property in the Town of Powers

Indicate Type of Property: R-Residential, C-Commercial, I-Industrial, U-Utility, F-Farm, L-Lakeshore, T-Timber, M-Mineral

Cass County, Minnesota, for Taxes for the Year 1958.

Main table with columns: IN WHOSE NAME ASSESSED, TO WHOM TRANSFERRED, DESCRIPTION OF PROPERTY, TRUE AND FULL VALUATIONS, ASSESSED VALUATIONS, VALUATIONS BY SCHOOL DISTRICTS AS EQUALIZED BY DEPARTMENT OF TAXATION, TAXES, PAID, WHEN PAID, etc.



NW 1/4 - NW 1/4
 32-139-30

Part of Lot 1 - 32-139-80

ada
ave

Creek

Shank Wilkum

10' strip

Dam

Plot of Ed's Shore

BOWEN LAKE

135.0'

147.5'

177.5'

179.5'

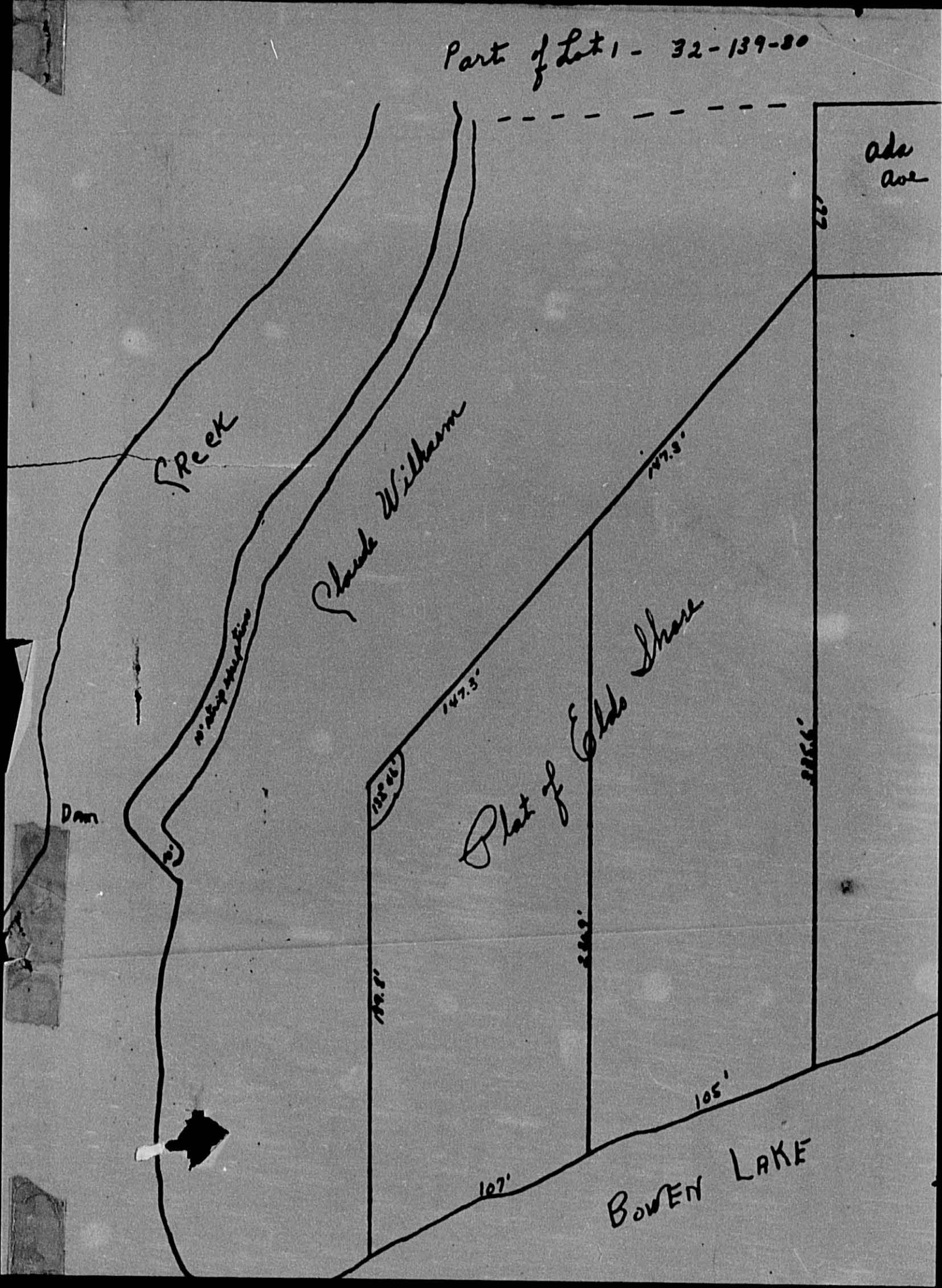
229.5'

222.5'

107'

105'

22



Assessment Roll and Tax List of Real Property in the Town of Powers

Indicate Type of Property: R-Residential, C-Commercial, I-Industrial, U-Utility, F-Farm, L-Lakeshore, T-Timber, M-Mineral

Cass County, Minnesota, for Taxes for the Year 1958.

Main table with columns: IN WHOSE NAME ASSESSED, TO WHOM TRANSFERRED, DESCRIPTION OF PROPERTY, TRUE AND FULL VALUATIONS, ASSESSED VALUATIONS, VALUATIONS BY SCHOOL DISTRICTS AS EQUALIZED BY DEPARTMENT OF TAXATION, SOLD FOR TAXES, SPECIAL TAXES, TOTAL TAXES, PAID, WHEN PAID, Number of Receipt, March Settlement 1959, June Settlement 1959, November Settlement 1959, Penalty, Collections to First Monday in January 1960, Delinquent on First Monday in January 1960, Total Delinquent Tax and Penalty, REMARKS.

Vertical text on the right edge: Miller, Woodland Desjardines Beach, Reshoe Beach, Intory Bay, Siano, Wildmore Beach

Assessment Roll and Tax List of Real Property in the Town of Powers

Cass County, Minnesota, for Taxes for the Year 1958.

Table with columns: IN WHOSE NAME ASSESSED, TO WHOM TRANSFERRED, DESCRIPTION OF PROPERTY, TRUE AND FULL VALUATIONS, ASSESSED VALUATIONS, VALUATIONS BY SCHOOL DISTRICTS AS EQUALIZED BY DEPARTMENT OF TAXATION, TAXES, PAID, WHEN PAID, SPECIAL TAXES, TOTAL TAXES, REMARKS. Includes handwritten entries for property owners like Lyle & Jessie Coffland and Robert W. & Clara G. Kunde.

Assessment Roll and Tax List of Real Property in the Town of Powers, Cass County, Minnesota, for Taxes for the Year 1958.

Table with columns: IN WHOSE NAME ASSESSED, TO WHOM TRANSFERRED, DESCRIPTION OF PROPERTY, TRUE AND FULL VALUATIONS, ASSESSED VALUATIONS, and FINAL EQUALIZED VALUE. Includes handwritten entries for Miller's Point and various property owners like Frank E. & Florence W. Foulk.

Table with columns: VALUATIONS BY SCHOOL DISTRICTS AS EQUALIZED BY DEPARTMENT OF TALENTION, TAXES, PAID, WHEN PAID, and REMARKS. Includes handwritten entries for tax payments and dates like 'PAID IN FULL APR 17 1959'.

811 2359 3120 17 336 710 1063

336 727 1063 26366 476 26842

4530 221 59 153

10604

10536

5328

10615

10617

1181

80 89

3 03

8874

30 00

30 00

50 90

28 00

49 00

Vertical text on the right edge of the page, including 'Miller's Point' and 'Cass County, Minnesota'.

Assessment Roll and Tax List of Real Property in the Town of Powers

Cass County, Minnesota, for Taxes for the Year 1958.

Form 50 - ILLINOIS DEPARTMENT OF REVENUE, SPRINGFIELD, ILL. * Indicate Type of Property: R-Residential, C-Commercial, I-Industrial, U-Utility, F-Farm, L-Lakeshore, T-Timber, M-Mineral

Table with columns: IN WHOSE NAME ASSESSED, TO WHOM TRANSFERRED, SUBDIVISION, DESCRIPTION OF PROPERTY, TRUE AND FULL VALUATIONS, ASSESSED VALUATIONS, and FINAL EQUALIZED VALUE.

Summary table with columns: TRUE AND FULL VALUATIONS, ASSESSED VALUATIONS, and FINAL EQUALIZED VALUE.

Table with columns: VALUATIONS BY SCHOOL DISTRICTS AS EQUALIZED BY DEPARTMENT OF TAXATION, TAXES, PAID, WHEN PAID, and REMARKS.

Vertical text on the right edge of the page: Heatland's Lake, St. Paul's Lake, St. Paul's Beach, Resnoe Beach, Wilmore Beach, Suanos.

Assessment Roll and Tax List of Real Property in the Town of Powers, Cass County, Minnesota, for Taxes for the Year 1958.

Form 30 - Indicate Type of Property: R-Residential, C-Commercial, I-Industrial, U-Utility, F-Farm, L-Lakeshore, T-Timber, M-Mineral

Table with columns: IN WHOSE NAME ASSESSED, TO WHOM TRANSFERRED, DESCRIPTION OF PROPERTY, TRUE AND FULL VALUATIONS, ASSESSED VALUATIONS, VALUATIONS BY SCHOOL DISTRICTS AS EQUALIZED BY DEPARTMENT OF TAXATION, TAXES, PAID, WHEN PAID, Number of Receipt, March Settlement 1959, June Settlement 1959, November Settlement 1959, Penalty, Collections to First Monday in January 1960, Delinquent on First Monday in January 1960, Total Delinquent Tax and Penalty, REMARKS.

Point Mill, Des Moines Beach, Woodland Mills, Heat Pad's Lake Shore, On Fairy Lake, Eldo Horseshoe Beach, Duloy Bay, Suanoo, Wildmere Beach

Point Mill, Des Moines Beach, Woodland Mills, Heat Pad's Lake Shore, On Fairy Lake, Eldo Horseshoe Beach, Duloy Bay, Suanoo, Wildmere Beach

Assessment Roll and Tax List of Real Property in the Town of Powers

Indicate Type of Property: R-Residential, C-Commercial, I-Industrial, U-Utility, F-Farm, L-Lakeshore, T-Timber, M-Mineral

Cass County, Minnesota, for Taxes for the Year 1958.

Table with columns: IN WHOSE NAME ASSESSED, TO WHOM TRANSFERRED, SUBDIVISION, DESCRIPTION OF PROPERTY, TRUE AND FULL VALUATIONS, ASSESSED VALUATIONS, VALUATIONS BY SCHOOL DISTRICTS AS EQUALIZED BY DEPARTMENT OF TAXATION, SOLD FOR TAXES, SPECIAL TAXES, TOTAL TAXES, PAID, WHEN PAID, Number of Receipt, March Settlement 1959, June Settlement 1959, Penalty, November Settlement 1959, Collections to First Monday in January 1960, Delinquent on First Monday in January 1960, Total Delinquent Tax and Penalty, REMARKS.

Assessment Roll and Tax List of Real Property in the Town of Powers

Form 50 - 1957-58

Indicate Type of Property: R-Residential, C-Commercial, I-Industrial, U-Utility, F-Farm, L-Lakeshore, T-Timber, M-Mineral

Cass County, Minnesota, for Taxes for the Year 1958.

Point
Lakeshore
On Entry
Eldo Shores
Eldo Shores
Sawtooth
El Sueno
El Sueno
Beach

IN WHOSE NAME ASSESSED	TO WHOM TRANSFERRED	DESCRIPTION OF PROPERTY				No. School District	Indicate Homestead Yes or No	Indicate Agricultural Yes or No	Indicate Type of Property	TRUE AND FULL VALUATIONS					ASSESSED VALUATIONS					FINAL EQUALIZED VALUE		
		SUBDIVISION	Sec. or Lot	Town or Block	Rng.					Number of Acres of Land	LAND Exclusive of Structures and Improvements	BUILDINGS and Other Structures	MACHINERY Permanently Attached to Real Estate	TOTAL True and Full Value	RURAL		ALL OTHER				TOTAL ASSESSED VALUE	Total Assessed Value as Equalized by the Board of Review
															Acres	100ths	Homestead Up to \$4,000 20%	Over \$4,000 and Non-Homestead 33 1/3%	Timber Land Class 3e 20%			
Floyd L. & Chesta W. Smith		Eldo Shores	1			114	No	No	L	60	126		186	62			62	718				
Forrest Shamhart		W. 53.95' of	2				No	"	"	60			60	20			20	62				
Floyd L. & Chesta W. Smith		E. 46.20' of	2				No	"	"	60			60	20			20	718				
Forrest Shamhart		E. 70.15' of	3				No	"	"	39	99		138	44			13	46				
Alfred S. & Vera Gusterman		W. 20' of 3rd all lot	4				No	"	"	80	625		705	235			235	46				
Fred Steiner			5				No	"	"	61	500		561	187			187	46				
Claude & Mabel Wilkerson			6				No	"	"	60	1800		1860	620			620	46				
"			7				No	"	"	60			60	20			20	46				
			8																			
			9																			
			10																			
			11																			
			12																			
			13																			
			14																			
			15																			
			16																			
			17																			
			18																			
			19																			
			20																			
										480	2925		3405	1135			1135					
										302	43150		3504	1168	210		1168	1210				
													3030									

SOLD FOR TAXES	VALUATIONS BY SCHOOL DISTRICTS AS EQUALIZED BY DEPARTMENT OF TAXATION						Tax including State Homestead	State Tax on Non-Homestead	SPECIAL TAXES	TOTAL TAXES	PAID	WHEN PAID	Number of Receipt	March Settlement 1959	June Settlement 1959	Penalty	November Settlement 1959	Penalty	Collections to First Monday in January 1960	Penalty	Delinquent on First Monday in January 1960	Total Delinquent Tax and Penalty	REMARKS
	District No.	District No.	District No.	District No.	District No.	District No.																	
	Rate	Rate	Rate	Rate	Rate	Rate																	
1																							
2																							
3																							
4																							
5																							
6																							
7																							
8																							
9																							
10																							
11																							
12																							
13																							
14																							
15																							
16																							
17																							
18																							
19																							
20																							
										1210			30006	792									
													30798										
														284 18									

Point's Four Point
Sanborn Heights Cho Hill
Dilligie's Sub-Division

Assessment Roll and Tax List of Real Property in the Town of Powers

Cass County, Minnesota, for Taxes for the Year 1958.

Form 30 - Indicate Type of Property: R-Residential, C-Commercial, I-Industrial, U-Utility, F-Farm, L-Lakeshore, T-Timber, M-Mineral

Table with columns: IN WHOSE NAME ASSESSED, TO WHOM TRANSFERRED, SUBDIVISION, TRUE AND FULL VALUATIONS (LAND, BUILDINGS, MACHINERY, TOTAL), ASSESSED VALUATIONS (RURAL, ALL OTHER), VALUATIONS BY SCHOOL DISTRICTS AS EQUALIZED BY DEPARTMENT OF TAXATION, SOLD FOR TAXES, PAID, WHEN PAID, SPECIAL TAXES, TOTAL TAXES, PAID, WHEN PAID, Number of Receipt, March Settlement 1959, June Settlement 1959, November Settlement 1959, Penalty, Collections to First Monday in January 1960, Delinquent on First Monday in January 1960, Total Delinquent Tax and Penalty, REMARKS.

Point, Lakeshore, On Fairy Lake, Eldo Shores, Sanborn Heights, Beach

Four Point, Echo Hill, Gillespie's Sub-Division

Assessment Roll and Tax List of Real Property in the Town of Powers

Cass County, Minnesota, for Taxes for the Year 1958.

Form SC Indicate Type of Property: R-Residential, C-Commercial, I-Industrial, U-Utility, F-Farm, L-Lakeshore, T-Timber, M-Mineral

Point, Lakeshore, On Fairy Lake, Elcho Shores, Amborn Heights, Echo Hill, Gillegie's Sub-Division

Viscent's Four Point Shores

Table with columns: IN WHOSE NAME ASSESSED, TO WHOM TRANSFERRED, DESCRIPTION OF PROPERTY, TRUE AND FULL VALUATIONS, ASSESSED VALUATIONS, VALUATIONS BY SCHOOL DISTRICTS AS EQUALIZED BY DEPARTMENT OF TAXATION, SOLD FOR TAXES, SPECIAL TAXES, TOTAL TAXES, PAID, WHEN PAID, Number of Receipt, March Settlement 1959, June Settlement 1959, Penalty, November Settlement 1959, Penalty, Collections to First Monday in January 1960, Penalty, Delinquent on First Monday in January 1960, Total Delinquent Tax and Penalty, REMARKS.

564 1100 1604 259 123 382

N 259 123 382 9562 82 9644

96 44

10675

10688

10689

10695

Assessment Roll and Tax List of Real Property in the Town of Powers

Indicate Type of Property: R-Residential, C-Commercial, I-Industrial, U-Utility, F-Farm, L-Lakeshore, T-Timber, M-Mineral

Cass County, Minnesota, for Taxes for the Year 1958.

Table with columns: IN WHOSE NAME ASSESSED, TO WHOM TRANSFERRED, SUBDIVISION, TRUE AND FULL VALUATIONS (RURAL, ALL OTHER, MACHINERY), ASSESSED VALUATIONS, VALUATIONS BY SCHOOL DISTRICTS, TAXES, PAID, WHEN PAID, and REMARKS. Includes handwritten entries for Vincent's Four Point Shores and Marvin R. Vincent.

Assessment Roll and Tax List of Real Property in the Town of Powers

Cass County, Minnesota, for Taxes for the Year 1958.

Form 30 ... Indicate Type of Property: R-Residential, C-Commercial, I-Industrial, U-Utility, F-Farm, L-Lakeshore, T-Timber, M-Mineral

Table with columns: IN WHOSE NAME ASSESSED, TO WHOM TRANSFERRED, DESCRIPTION OF PROPERTY, TRUE AND FULL VALUATIONS, ASSESSED VALUATIONS, and FINAL EQUALIZED VALUE.

Table with columns: VALUATIONS BY SCHOOL DISTRICTS AS EQUALIZED BY DEPARTMENT OF TAXATION, TAXES, PAID, WHEN PAID, and REMARKS.

