

ASSESSMENT & TAX LIST

Powers

1950

Assessor's Return

FORM 2 MILLER-DAVIS COMPANY, MINNEAPOLIS

NAMES OF OWNERS

Treasurer's Office, Cass County, Minnesota

RECEIVED this, the first Monday (being the 2 day) of January, A. D. 1951, of L. G. Peterson, Auditor of said County, Minnesota, the Tax List of all Taxable Real and Personal Property in the Town of Powers in said County for the year A. D. 1950, as specified above and amounting to 100 Dollars

Paul D. Jewell County Treasurer. L.C.P.

Auditor's Office, Cass County, Minnesota

I, Auditor of said County, and State of Minnesota, do hereby certify that the following is a correct list of the Taxes levied on the Real and Personal Property in the of for the year 1950.

WITNESS my hand and official seal, the day of 1951. County Auditor.

(SEAL)

Jan. 1, 1952

Office of County Treasurer, Cass County, Minnesota

To L. G. Peterson, County Auditor:

Sir: I herewith return to you the Tax List for the Town of Powers in said County for the year 1950, heretofore received from you. I certify that I have compared the same with the duplicate receipts in your office, and have written opposite the amount of each tax so received the words "First Quarter Paid", "Second Quarter Paid", "Third Quarter Paid" or "Paid in full" as the case may be, and the number of my receipt given in discharge of said tax, and each tract or lot of real property against which the taxes remain unpaid is delinquent for said year.

Yours respectfully, Paul D. Jewell, by F.M.P. County Treasurer.

Auditor's Office, Cass County, Minnesota

I hereby certify that on the first Monday in January 1952, I received of County Treasurer, the Tax List of the of in said County for the year 1950; that I have compared the said list with the Statements receipted for by said Treasurer, which are on file in my office, and that each tract or lot of real property therein against which the taxes, or any part thereof, remains unpaid are delinquent for said year.

(SEAL)

County Auditor.

Assessment Roll and Tax List of Real Property in the Town of Powers

Cass County, Minnesota, for Taxes for the Year 1950.

Table with columns for IN WHOSE NAME ASSESSED, TO WHOM TRANSFERRED, DESCRIPTION OF PROPERTY, TRUE AND FULL VALUATIONS, ASSESSED VALUATIONS, VALUATIONS BY SCHOOL DISTRICTS AS EQUALIZED BY DEPARTMENT OF TAXATION, TAX, State Tax on Non-Homestead, SPECIAL TAXES, TOTAL TAXES, PAID, WHEN PAID, Number of Receipt, March Settlement 1951, June Settlement 1951, November Settlement 1951, Collections to First Monday in January 1952, Delinquent on First Monday in January 1952, Total Delinquent Tax and Penalty, REMARKS.

Assessment Roll and Tax List of Real Property in the Town of Powers,

Cass County, Minnesota, for Taxes for the Year 1950.

Form 500 - 1-15-50

IN WHOSE NAME ASSESSED	TO WHOM TRANSFERRED	DESCRIPTION OF PROPERTY					No. School District	Indicate Homestead Yes or No	Indicate Agricultural Yes or No	TRUE AND FULL VALUATIONS				ASSESSED VALUATIONS					FINAL EQUALIZED VALUE	SOLD FOR TAXES	VALUATIONS BY SCHOOL DISTRICTS AS EQUALIZED BY DEPARTMENT OF TAXATION						Taxes including State Homestead	State Tax on Non-Homestead	SPECIAL TAXES	TOTAL TAXES	PAID	WHEN PAID	Number of Receipt	March Settlement 1951	June Settlement 1951	Penalty	November Settlement 1951	Penalty	Collections to First Monday in January 1952	Penalty	Delinquent on First Monday in January 1952	Total Delinquent Tax and Penalty	REMARKS				
		SUBDIVISION	Sec. or Lot	Town or Block	Rng.	Number of Acres of Land				TOTAL True and Full Value	RURAL		ALL OTHER		MACHINERY Permanently Attached to Real Estate	TOTAL ASSESSED VALUE	Total Assessed Value as Equalized by the Board of Review	District No.			District Rate	District No.	District Rate	District No.	District Rate	District No.																		District Rate			
											Homestead Up to \$4,000 20%	Over \$4,000 and Non-Homestead 33 1/4%	Homestead Up to \$4,000 25%	Over \$4,000 and Non-Homestead 40%																															Dollars	Dollars	Dollars
State of Minnesota		NE 1/4 of NE 1/4 Lot 1	6	139	30																																										
State of Minnesota		NW 1/4 of NE 1/4																																													
State of Minnesota		SW 1/4 of NE 1/4																																													
State of Minnesota		SE 1/4 of NE 1/4																																													
State of Minnesota		NE 1/4 of NW 1/4																																													
State of Minnesota		NW 1/4 of NW 1/4																																													
State of Minnesota		SW 1/4 of NW 1/4																																													
State of Minnesota		SE 1/4 of NW 1/4																																													
Henry E. Karnofsky		NE 1/4 of SW 1/4			40		70		174 159		58 53		174 159		58 53		53	58					SOLD FOR TAXES	58		1170	26		1196													1196					
State of Minnesota		NW 1/4 of SW 1/4																																													
State of Minnesota		SW 1/4 of SW 1/4																																													
State of Minnesota		SE 1/4 of SW 1/4																																													
State of Minnesota		NE 1/4 of SE 1/4							Exempt - Ag. Property																																						
State of Minnesota		NW 1/4 of SE 1/4																																													
State of Minnesota		SW 1/4 of SE 1/4																																													
State of Minnesota		SE 1/4 of SE 1/4																																													
State of Minnesota					40				174 159		58 53		174 159		58 53		53	58						58		1170	26		1196																		

WOODLAND DES MOTHS BEACH HONESHORE BEACH BAYVIEW ELSHORE BEACH

Assessment Roll and Tax List of Real Property in the Town of Powers

IN WHOSE NAME ASSESSED	TO WHOM TRANSFERRED	DESCRIPTION OF PROPERTY					TRUE AND FULL VALUATIONS						ASSESSED VALUATIONS					FINAL EQUALIZED VALUE	SOLD FOR TAXES	VALUATIONS BY SCHOOL DISTRICTS AS EQUALIZED BY DEPARTMENT OF TAXATION						Tax including State Homestead	State Tax on Non-Homestead	SPECIAL TAXES	TOTAL TAXES	PAID	WHEN PAID	Number of Receipt	March Settlement 1951	June Settlement 1951	Penalty	November Settlement 1951	Penalty	Collections to First Monday in January 1952	Penalty	Delinquent on First Monday in January 1952	Total Delinquent Tax and Penalty	REMARKS	
		SUBDIVISION	Sec. or Lot	Town or Block	Rng.	Number of Acres of Land	Machinery Permanently Attached to Real Estate	TOTAL True and Full Value	RURAL		ALL OTHER		TOTAL ASSESSED VALUE	Total Assessed Value as Equalized by the Board of Review	District No.	District No.	District No.			District No.	District No.	District No.																					
									LAND Exclusive of Structures and Improvements	BUILDINGS and Other Structures	Over \$4,000 Homestead Up to \$4,000 20%	Over \$4,000 and Non-Homestead 33 1/3%											Homestead Up to \$4,000 25%	Over \$4,000 and Non-Homestead 40%	Rate																		Rate
State of Minnesota		NE 1/4 of NE 1/4	7	139	30																																						
State of Minnesota		NW 1/4 of NW 1/4																																									
The Tall Corn Council Boy Scouts of America		SE 1/4 of NE 1/4																																									
State of Minnesota		NE 1/4 of NW 1/4																																									
State of Minnesota		NW 1/4 of NW 1/4 Lot 1																																									
State of Minnesota		SW 1/4 of NW 1/4 Lot 2																																									
State of Minnesota		SE 1/4 of NW 1/4 Lot 8																																									
State of Minnesota		NE 1/4 of SW 1/4 Lot 7																																									
State of Minnesota		NW 1/4 of SW 1/4 Lot 3																																									
State of Minnesota		SW 1/4 of SW 1/4 Lot 4																																									
The Tall Corn Council Boy Scouts of America		SE 1/4 of SW 1/4																																									
Dr. Frank E. Foulk		NE 1/4 of SE 1/4																																									
"		SW 1/4 of SE 1/4																																									
Moses E. + Lila L. Jaffke		Lot 5 E. of Ry. less Ry.																																									
Frank E. + Florence W. Foulk		Lot 5 W. of Ry. except that part extending 100' E. of the E. shoreline of Lake Becker																																									

HUMPHREYS POINT
WOODLAND
DES MOINES BEACH
TOWNESEND BEACH
MOXY HAY
EL SUENO BEACH

Assessment Roll and Tax List of Real Property in the Town of Powers

Table with columns: IN WHOSE NAME ASSESSED, TO WHOM TRANSFERRED, DESCRIPTION OF PROPERTY, TRUE AND FULL VALUATIONS, ASSESSED VALUATIONS, FINAL EQUALIZED VALUE. Includes entries for Herbert R. & Nelle B. Craswell, Richard B. & Esther M. Gillespie, Gunnar Johnson, Wm. J. Roy W. & Gertrude A. Curney, Navillus Land Co., H. R. & Nelle B. Craswell, Roy W. & Gertrude A. Curney + Otto J. & Stella B. Haste, and State of Minnesota.

259 09 2019 590 2589 863 1832 475 2307 769 863

Cass County, Minnesota, for Taxes for the Year 1950.

Table with columns: VALUATIONS BY SCHOOL DISTRICTS AS EQUALIZED BY DEPARTMENT OF TAXATION, Tax including State Homestead, State Tax on Non-Homestead, SPECIAL TAXES, TOTAL TAXES, PAID, WHEN PAID, Number of Receipt, March Settlement 1951, June Settlement 1951, November Settlement 1951, Collections to First Monday in January 1952, Delinquent on First Monday in January 1952, Total Delinquent Tax and Penalty, REMARKS. Includes entries for 1-20 with tax amounts and payment dates.

863 174 04 378 177 52 82 56 63 76 30 50

Assessment Roll and Tax List of Real Property in the Town of Powers,

Table with columns for Property Description, Valuations (True and Full, Assessed), and Final Equalized Value. Includes entries for H.M. Shimmie, George W. & Lillian B. Charles, Nana & Ella Lieber, Anna Gertrude La Fleur, Wendell M. & Louise Berger, Richard B. & Esther M. Gillespie, and Richard B. & Esther M. Gillespie.

Table with columns for Valuations by School Districts (District No., Rate), Taxes (State, Local, Special, Total), Paid, When Paid, Penalties, Collections, and Remarks. Includes handwritten entries for tax payments like '2nd Half Paid SEP 18 1951'.

IN WHOSE NAME ASSESSED	TO WHOM TRANSFERRED	DESCRIPTION OF PROPERTY				TRUE AND FULL VALUATIONS				ASSESSED VALUATIONS					FINAL EQUALIZED VALUE	SOLD FOR TAXES	VALUATIONS BY SCHOOL DISTRICTS AS EQUALIZED BY DEPARTMENT OF TAXATION						PAID	WHEN PAID	Number of Receipt	March Settlement 1951	June Settlement 1951	Penalty	November Settlement 1951	Penalty	Collections to First Monday in January 1952	Penalty	Delinquent on First Monday in January 1952	Total Delinquent Tax and Penalty	REMARKS												
		Subdivision	Sec. of Lot	Town or Block	Rng.	Number of Acres of Land	Land Exclusive of Structures and Improvements	Buildings and Other Structures	Machinery Permanently Attached to Real Estate	TOTAL True and Full Value	RURAL	ALL OTHER	MACHINERY	TOTAL ASSESSED VALUE			Total Assesed Value as Equalized by the Board of Review	District No.	Rate	District No.	Rate	District No.														Rate	District No.	Rate	District No.	Rate	Tax including State Homestead	State Tax on Non-Homestead	SPECIAL TAXES	TOTAL TAXES	Month	Day	Year
A. J. Roberts + R. S. Thorpe		NE 1/4 of NE 1/4	15	139	30	40	264		264	88		264	88	88	1								1774	38	1812	1															1812						
"		NW 1/4 of NE 1/4 Lot 2				38	258		258	86		258	86	86	2								1734	38	1772	2															1772						
State of Minnesota		SW 1/4 of NE 1/4													3																																
State of Minnesota		SE 1/4 of NE 1/4													4																																
Wm. Curney		NW 1/4 of NW 1/4 Lot 3				25	222		222	74		222	74	74	6								1492	32	1524	6																					
Roy + Gertrude Curney		Lot 4 less that part E. of NW 1/4 of NW 1/4 Ad.				40	201		201	67		201	67	67	7								1170	26	1216	7																					
		Lot 5 Part of E. E. Home SW 1/4 of NW 1/4					177		177	59		177	59	59	8																																
State of Minnesota		SE 1/4 of NW 1/4					141		141	47		141	47	47	9																																
Paul L. Britz		all Lot 4 lying E. of Rd.				1230	129		129	43		129	43	43	10								948	20	968	10																					
State of Minnesota		NE 1/4 of SW 1/4					315		315	105		315	105	105	11																																
Lloyd + Dagmar Bradfield		NW 1/4 of SW 1/4 Lot 6				28	285		285	95		285	95	95	12								2118	46	2164	12																					
Kenneth Scott		SW 1/4 of SW 1/4 Lot 7				39	264		264	88		264	88	88	13								1774	38	1812	13																					
"		SE 1/4 of SW 1/4				40	264		264	88		264	88	88	14								1774	38	1812	14																					
State of Minnesota		NE 1/4 of SE 1/4					264		264	88		264	88	88	18								1774	38	1812	18																					
State of Minnesota		NW 1/4 of SE 1/4					264		264	88		264	88	88	19								1774	38	1812	19																					
J. O. Hackett	State of Minnesota	SW 1/4 of SE 1/4				40	264		264	88		264	88	88	18								1774	38	1812	18																		1812 Canceled			
"	State of Minnesota	SE 1/4 of SE 1/4 Lot 1				39	264		264	88		264	88	88	19								1774	38	1812	19																		1812			
						331	2433		2433	811		2433	811	811	20								16352	352	16704	20																					
						331	2211		2211	737		2211	737	811																																	

MINNESOTA POINT
 HOOLAID
 DEER JONES BEACH
 FORESHOE BEACH
 NROY BAY
 EL SIENO BE BEACH

Assessment Roll and Tax List of Real Property in the Town of Powers,

Cass County, Minnesota, for Taxes for the Year 1950.

Table with columns for Property Description, Valuations (Rural, All Other, Machinery, Total Assessed), School Districts, Taxes (Total, Paid, When Paid), and Remarks. Includes entries for Alice U. Almquist, Lyle C. Steinbeck, Clarence R. & Terese A. Seeds, Alfred Anderson, Myron L. Griffith, Helen H. Cummins, Clyde Bundy, N.C. & Helen H. Cummins, Chas. B. Funch, Clarence R. & Terese A. Seeds, J. E. & Mabel J. Deitz, and Clarence R. & Terese A. Seeds.

Assessment Roll and Tax List of Real Property in the Town of Powers

Cass County, Minnesota, for Taxes for the Year 1950.

IN WHOSE NAME ASSESSED	TO WHOM TRANSFERRED	DESCRIPTION OF PROPERTY					TRUE AND FULL VALUATIONS					ASSESSED VALUATIONS					FINAL EQUALIZED VALUE	SOLD FOR TAXES	VALUATIONS BY SCHOOL DISTRICTS AS EQUALIZED BY DEPARTMENT OF TAXATION						Tax including State Homestead	State Tax on Non-Homestead	SPECIAL TAXES	TOTAL TAXES	PAID	WHEN PAID	Number of Receipt	March Settlement 1951	June Settlement 1951	Penalty	November Settlement 1951	Penalty	Collections to First Monday in January 1952	Penalty	Delinquent on First Monday in January 1952	Total Delinquent Tax and Penalty	REMARKS											
		Subdivision	Sec. or Lot	Town or Block	Reg.	Number of Acres of Land	Land	Buildings and Other Structures	Machinery	Machinery Attached to Real Estate	Total	Rural	All Other	Total	Total Assessed Value as Equalized by Board of Review	District No.			District No.	District No.	District No.	District No.	District No.	Rate																		Rate	Rate	Rate	Rate	Rate	Rate	Rate	Rate	Rate	Rate	Rate
Myron L. + Beulah Griffith		NE 1/4 of NE 1/4 in NE cor.	17	139	30	39						492		164	145	164	1	164						33.08	72		33.80	1	PAID IN FULL	MAY 8 1951	6274		3380																			
Lulu + Henry Nusman		NW 1/4 of NE 1/4				40						927	141	74	188	215	2	SOLD FOR TAXES						46.58	32		46.90	2	2nd Half Paid	OCT 31 1951	15009									4690												
Arnon Zoffke		SW 1/4 of NE 1/4				40						330			60	66	3							13.32			13.32	3	1st Half Paid	MAY 31 1951	10076		666		666							105 above on receipts 10076 for June settlement										
Arnon + Blanche Zoffke		SE 1/4 of NE 1/4				40						330			60	66	4							13.32			13.32	4	2nd Half Paid	OCT 31 1951	15009		666		666																	
Clarence L. + Eva M. Keep		1/2 ac. in NE cor. of NE 1/4 of NE 1/4				1						15		3	3	3	5	5	SOLD FOR TAXES						60		60	5														60										
Marjorie Magdaline Dirks		NE 1/4 of NW 1/4				40						276	48	108	97	108	6							21.78	48		22.26	6	PAID IN FULL	MAY 22 1951	7408		2226																			
Lila L. + Moses E. Zoffke		NW 1/4 of NW 1/4				40						360		72	65	72	7							14.52			14.52	7	2nd Half Paid	OCT 31 1951	14861		726		726																	
" " "		SW 1/4 of NW 1/4				40						225		50	45	50	8							10.08			10.08	8	1st Half Paid	MAY 31 1951	10086		504		504																	
Lorna + Fay Hamilton		SE 1/4 of NW 1/4				40						770	410	154	133	154	9							31.06			31.06	9	PAID IN FULL	OCT 31 1951	14865																					
" " "		NE 1/4 of SW 1/4				40						170		34	31	34	11							6.86			6.86	11	PAID IN FULL	OCT 31 1951	14865																					
State of Minnesota		NW 1/4 of SW 1/4															12																																			
State of Minnesota		SW 1/4 of SW 1/4															13																																			
Joe + May Johnson		SE 1/4 of SW 1/4				40						320		64	58	64	14							12.90			12.90	14	2nd Half Paid	SEP 1 1951	12466		645		645																	
Arnon + Blanche Zoffke		NE 1/4 of SE 1/4				40						275		55	55	61	16							12.30			12.30	16	2nd Half Paid	OCT 31 1951	15009		615		615																	
Arnon Zoffke		NW 1/4 of SE 1/4				40						275		59	54	59	17							11.90			11.90	17	1st Half Paid	MAY 31 1951	10076		595		595																	
" " "		SW 1/4 of SE 1/4				40						330		66	60	66	18							13.32			13.32	18	2nd Half Paid	OCT 31 1951	15009		666		666																	
Arnon + Blanche Zoffke		SE 1/4 of SE 1/4				40						295		59	54	59	19							11.90			11.90	19	1st Half Paid	MAY 31 1951	10076		595		595																	
						560						4203	1310	895	346									20.69	152		255.04																					11284	9470	4750		
												3816	1106	799	309									46.58																												

WOODLAND DEER MOTELS BEACH FORESHORE BEACH MONY BAY EL SIENDO BE BEACH

Assessment Roll and Tax List of Real Property in the Town of _____ of _____

Cass County, Minnesota, for Taxes for the Year 1950.

Table with columns for Description of Property, True and Full Valuations, Assessed Valuations, Final Equalized Value, Sold for Taxes, Valuations by School Districts, and Payment/Remarks. Includes entries for various owners such as Frank Lang, Mose E. & Sila S. Zaffke, Violet Bundy, Paul E. & Ida M. Sawyer, and Lester B. & E. Virginia Hunzelman.

Assessment Roll and Tax List of Real Property in the Town of Powers

Table with columns: IN WHOSE NAME ASSESSED, TO WHOM TRANSFERRED, DESCRIPTION OF PROPERTY, TRUE AND FULL VALUATIONS, ASSESSED VALUATIONS, FINAL EQUALIZED VALUE. Includes entries for Aaron Zaffke, Kathryn E. & Lewis H. Jew, Jr., Joe & May Johnson, Jean McDowell, C.L. Curry, and Kathryn E. & Lewis H. Jew, Jr.

Cass County, Minnesota, for Taxes for the Year 1950.

Table with columns: VALUATIONS BY SCHOOL DISTRICTS AS EQUALIZED BY DEPARTMENT OF TAXATION, Tax including State Homestead, State Tax on Non-Homestead, SPECIAL TAXES, TOTAL TAXES, PAID, WHEN PAID, Number of Receipt, March Settlement, June Settlement, November Settlement, Collections to First Monday in January, Delinquent on First Monday in January, Total Delinquent Tax and Penalty, REMARKS. Includes entries for Aaron Zaffke, Kathryn E. & Lewis H. Jew, Jr., Joe & May Johnson, Jean McDowell, C.L. Curry, and Kathryn E. & Lewis H. Jew, Jr.

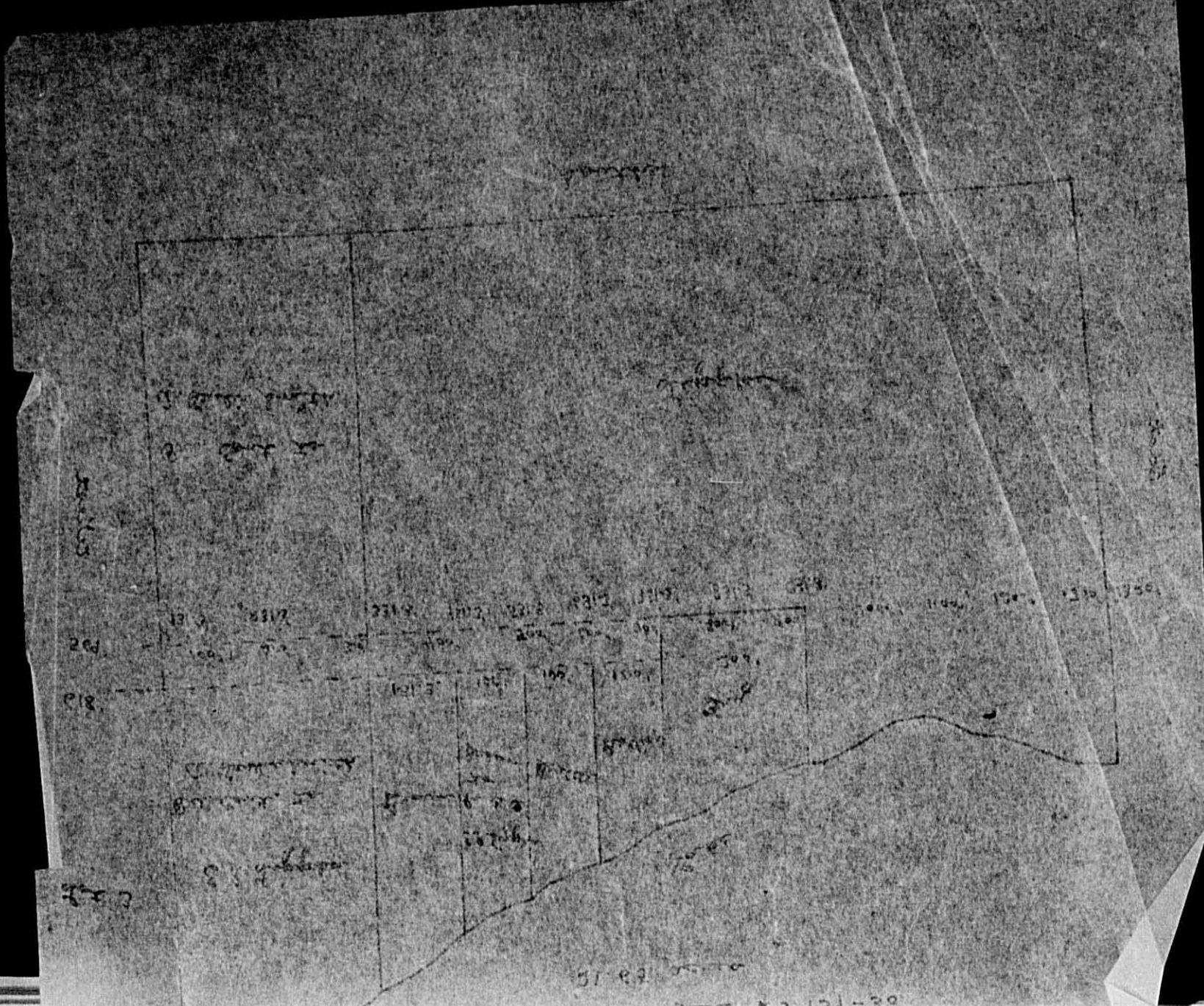
Assessment Roll and Tax List of Real Property in the Town of Powers

Cass County, Minnesota, for Taxes for the Year 1950.

Table with columns: IN WHOSE NAME ASSESSED, TO WHOM TRANSFERRED, DESCRIPTION OF PROPERTY, TRUE AND FULL VALUATIONS, ASSESSED VALUATIONS, VALUATIONS BY SCHOOL DISTRICTS AS EQUALIZED BY DEPARTMENT OF TAXATION, TAXES, PAID, WHEN PAID, Number of Receipt, March Settlement 1951, June Settlement 1951, November Settlement 1951, Collections to First Monday in January 1952, Delinquent on First Monday in January 1952, Total Delinquent Tax and Penalty, REMARKS.

Form 502 - 1-15-50 - 1950

Main data table with columns: IN WHOSE NAME ASSESSED, TO WHOM TRANSFERRED, DESCRIPTION OF PROPERTY, TRUE AND FULL VALUATIONS (LAND, BUILDINGS, MACHINERY, RURAL, ALL OTHER), ASSESSED VALUATIONS (Homestead, Over \$4,000), FINAL EQUALIZED VALUE, SOLD FOR TAXES, VALUATIONS BY SCHOOL DISTRICTS AS EQUIVALENT BY DEPARTMENT OF TAXATION, and various tax and collection data.



IN WHOSE NAME ASSESSED	TO WHOM TRANSFERRED	DESCRIPTION OF PROPERTY				TRUE AND FULL VALUATIONS				ASSESSED VALUATIONS					FINAL EQUALIZED VALUE	SOLD FOR TAXES	VALUATIONS BY SCHOOL DISTRICTS AS EQUALIZED BY DEPARTMENT OF VALUATION							SPECIAL TAXES	TOTAL TAXES	PAID	WHEN PAID	Number of Receipt	March Settlement 1951	June Settlement 1951	Penalty	November Settlement 1951	Penalty	Collections to First Monday in January 1952	Penalty	Delinquent on First Monday in January 1952	Total Delinquent Tax and Penalty	REMARKS						
		Subdivision	Sec. or Lot	Town or Block	Rng.	Number of Acres of Land	LAND Exclusive of Structures and Improvements	BUILDINGS and Other Structures	MACHINERY Permanently Attached to Real Estate	TOTAL True and Full Value	RURAL		ALL OTHER				MACHINERY Permanently Attached to Real Estate	TOTAL ASSESSED VALUE	District No.	District No.	District No.	District No.	District No.																District No.					
											Homestead Up to \$4,000 20%	Over \$4,000 and Non-Homestead 33 1/3%	Homestead Up to \$4,000 25%	Over \$4,000 and Non-Homestead 40%					Rate	Rate	Rate	Rate	Rate																Rate					

1951
698 2695 3373 54 1041
630 2247 2877 45 884
929 1095

1041
1095
23724 462
24186

1570 14209 1724 122 6566
1724

Table with columns: IN WHOSE NAME ASSESSED, TO WHOM TRANSFERRED, DESCRIPTION OF PROPERTY, TRUE AND FULL VALUATIONS (LAND, BUILDINGS, MACHINERY), ASSESSED VALUATIONS (RURAL, ALL OTHER), VALUATIONS BY SCHOOL DISTRICTS, TAXES, PAID, WHEN PAID, Number of Receipt, March Settlement, June Settlement, November Settlement, Collections to First Monday in January, Delinquent on First Monday in January, Total Delinquent Tax and Penalty, REMARKS.

Assessment Roll and Tax List of Real Property in the Town of Powers

Cass County, Minnesota, for Taxes for the Year 1950.

Table with columns: IN WHOSE NAME ASSESSED, TO WHOM TRANSFERRED, DESCRIPTION OF PROPERTY, TRUE AND FULL VALUATIONS, ASSESSED VALUATIONS, VALUATIONS BY SCHOOL DISTRICTS AS EQUALIZED BY DEPARTMENT OF TAXATION, SOLD FOR TAXES, PAID, WHEN PAID, Number of Receipt, March Settlement 1951, June Settlement 1951, November Settlement 1951, Collections to First Monday in January 1952, Delinquent on First Monday in January 1952, Total Delinquent Tax and Penalty, REMARKS.

IN WHOSE NAME ASSESSED	TO WHOM TRANSFERRED	DESCRIPTION OF PROPERTY	TRUE AND FULL VALUATIONS			ASSESSED VALUATIONS						FINAL EQUALIZED VALUE
			LAND	BUILDINGS	MACHINERY	RURAL		ALL OTHER		MACHINERY	TOTAL ASSESSED VALUE	
			Dollars	Dollars	Dollars	Homestead Up to \$4,000 20%	Over \$4,000 and Non-Homestead 33 1/3%	Homestead Up to \$4,000 25%	Over \$4,000 and Non-Homestead 40%	Permanently Attached to Real Estate 33 1/3%	Dollars	Dollars
Bladye Tyssedal		Strip 2 1/2 x 1/2 across Lot 1 + less strip 2 1/2 x 1/2 wide	30.5	335		128		111			111	128
Edwin + Helen Falk		NW 1/4 of NW 1/4 Lot 2	615	280		315		278			278	315
Walter E., Margaret R. + J. Kenneth Luebber		3.01 ac. less E. 32 rods, 4 less strip 2 1/2 x 1/2 wide across NE NE 1/4	99				36	33			33	36
Bladye Tyssedal		E. 28 rods. of Lot 1 less E. 24 rods. of W. 14 rods. of E. 28 rods.	85			17		15			15	17
Isaac M. Walker, Jr.		NE 1/4 of NW 1/4	350	510		172		149			149	172
"		NW 1/4 of NW 1/4	305	425		61		55			55	61
Margaret + Wiley O. Bloom		SW 1/4 of NW 1/4	384			128		116			116	128
State of Minnesota			348			116						
Kenneth Luebber		Lot 3 commencing at a pt. 65 rods S. of W. 84 rods from NE cor. of Lot 1, thence W. 80 rods, thence S. to lake, thence along lake to pt. 818' W. of E. line of Lot 1, thence N. to log.	24			8		7			7	8
Margaret + Wiley O. Bloom		NE 1/4 of SW 1/4	21									
Margaret + Wiley O. Bloom		NW 1/4 of SW 1/4 Lot 4	729	288		339		301			301	339
Harold + Sadie Smith		SW 1/4 of SW 1/4 Lot 5	425	635	530	174	212	38			215	250
Margaret E. Luebber		SE 1/4 of SW 1/4 commencing at NE cor. of Lot 1, E. 65 rods, W. 79 rods to pt. of log, thence W. 80 rods to lake, thence along lake to pt. 928' W. of E. line of Lot 1, thence N. to log.	24			8		7			7	8
W. E. Luebber		W. 1/4 rods. of E. 32 rods. of Lot 1 less NW 1/4 of SW 1/4	21			8		7			7	8
Bladye Tyssedal		N. 40 rods. of W. 1/4 rods. of E. 32 rods. of Lot 1	5			1		1			1	1
J. A. Dupre		E. 24 rods. of W. 14 rods. of E. 28 rods. of Lot 1	42			14		13			13	14
Katherine + Verdi R. Blackford		SW 1/4 of SW 1/4 of Lot 1	39			13		24			24	26
		Lot 6	130			26						
			120			24						
			3555	2212		594	617	894			1332	1511
			3227	1845		5072	538	794				

Continued on next page

SOLD FOR TAXES	VALUATIONS BY SCHOOL DISTRICTS AS EQUALIZED BY DEPARTMENT OF TAXATION						Tax including State Homestead	State Tax on Non-Homestead	SPECIAL TAXES	TOTAL TAXES	PAID	WHEN PAID	Number of Receipt	March Settlement 1951	June Settlement 1951	Penalty	November Settlement 1951	Penalty	Collections to First Monday in January 1952	Penalty	Delinquent on First Monday in January 1952	Total Delinquent Tax and Penalty	REMARKS
	District No.	District No.	District No.	District No.	District No.	District No.																	
	Rate	Rate	Rate	Rate	Rate	Rate																	
	128						25.82			25.82	1 PAID IN FULL JUL 3 1951 9925											25.82 40	
	315						6.352	138		64.90	2 2nd Half Paid OCT 3 1951 14874 1st Half Paid OCT 2 6 1951 13625											32451 227	
	36						7.26	16		7.42	4 PAID IN FULL MAY 3 1 1951 10083											7.42	
	17						3.42			3.42	5 PAID IN FULL JUL 3 1951 9925											3.42 16	
	172						34.68			34.68	6 PAID IN FULL APR 27 1951 4669											34.68	
	61						12.30			12.30	7 PAID IN FULL APR 23 1951 4669 2nd Half Paid OCT 3 1 1951 14860											12.30	
	128						25.82	56		26.38	8 1st Half Paid MAY 2 4 1951 7535											13.19 13.19	
							1.74	04		1.78	10 PAID IN FULL MAY 3 1 1951 10083											1.78	
	277						55.86	122		57.08	11 2nd Half Paid OCT 3 1 1951 14860											57.08	
	339						68.36	150		69.86	12 1st Half Paid MAY 2 4 1951 7535											34.93 22.15	
							54.16	16		54.32	13 PAID IN FULL MAY 3 1 1951 10062											54.32	
							1.74	04		1.78	15 PAID IN FULL MAY 3 1 1951 10083											1.78	
							1.62	04		1.66	16 PAID IN FULL MAY 3 1 1951 10083											1.66	
	1						20			20	17 PAID IN FULL JUL 3 1951 9925											20 01	
							304	06		310	18 PAID IN FULL JUL 3 1951 9925											310 06	
							564			564	19 PAID IN FULL APR 3 0 1951 5410											564	
							379			379													
							826			826													
							1205			1205													
							24300	394		24694												16720	13278
							31326			31326												12.78	

Assessment Roll and Tax List of Real Property in the Town of Powers

Cass County, Minnesota, for Taxes for the Year 1950.

Table with columns: IN WHOSE NAME ASSESSED, TO WHOM TRANSFERRED, DESCRIPTION OF PROPERTY, TRUE AND FULL VALUATIONS, ASSESSED VALUATIONS, FINAL EQUALIZED VALUE.

Table with columns: VALUATIONS BY SCHOOL DISTRICTS AS EQUALIZED BY DEPARTMENT OF TAXATION, TAXES, PAID, WHEN PAID, MARCH SETTLEMENT, JUNE SETTLEMENT, NOVEMBER SETTLEMENT, COLLECTIONS TO FIRST MONDAY IN JANUARY 1952, DELINQUENT ON FIRST MONDAY IN JANUARY 1952, TOTAL DELINQUENT TAX AND PENALTY, REMARKS.

WOODLAND BEACH, HONESHORE BEACH, SANDY BAY, EL SUENO, SAN JACINTO

IN WHOSE NAME ASSESSED	TO WHOM TRANSFERRED	DESCRIPTION OF PROPERTY					TRUE AND FULL VALUATIONS					ASSESSED VALUATIONS							FINAL EQUALIZED VALUE	SOLD FOR TAXES	VALUATIONS BY SCHOOL DISTRICTS AS EQUALIZED BY DEPARTMENT OF TAXATION						Tax including State Homestead	State Tax on Non-Homestead	SPECIAL TAXES	TOTAL TAXES	PAID	WHEN PAID	Number of Receipt	March Settlement 1951	June Settlement 1951	Penalty	November Settlement 1951	Penalty	Collections to First Monday in January 1952	Penalty	Delinquent on First Monday in January 1952	Total Delinquent Tax and Penalty	REMARKS
							LAND		BUILDINGS and Other Structures	MACHINERY Permanently Attached to Real Estate	TOTAL True and Full Value	RURAL		ALL OTHER		MACHINERY Permanently Attached to Real Estate	TOTAL ASSESSED VALUE	Total Assessed Value as Equalized by the Board of Review			District No.	District No.	District No.	District No.	District No.	District No.																	
		Excl. of Structures and Improvements				Homestead Up to \$4,000	Over \$4,000 and Non-Homestead	Homestead Up to \$4,000	Over \$4,000 and Non-Homestead																																		
		Dollars	Dollars	Dollars	Dollars	Dollars	Dollars	Dollars	Dollars	Dollars	Dollars	Dollars	Dollars																														
		NE ¼ of NE ¼	31	139	30																																						
		NW ¼ of NE ¼																																									
		SW ¼ of NE ¼																																									
		SE ¼ of NE ¼																																									
		NE ¼ of NW ¼																																									
		NW ¼ of NW ¼																																									
		SW ¼ of NW ¼																																									
		SE ¼ of NW ¼																																									
	Clark W. + Irene M. Johnston	E ½ of Lot 5			1 62			54 48	54 48		18 16																																
		NE ¼ of SW ¼						54 48	54 48		18 16				18			390	08			398																			398 / 438		
	"	NW ¼ of SW ¼						54 48	54 48		18 16				18			390	08			398																					
	"	SE ¼ of SW ¼						54 48	54 48		18 16				18			390	08			398																					
		N ¼ of SE ¼						430 390	430 390		86 78							1734				1734																					
	James L. + Elsie A. Coda	SE ¼ of SE ¼						485 440	485 440		97 88							1956				1956																					
	"	N ¼ of SE ¼						485 440	485 440		97 88							1956				1956																					
								1023 926	1023 926		183 166	36 32						3690	16			4486																					
																		780																									

WILLIAM'S POINT
 WOODLAND
 DES MOINES BEACH
 FOSSEBUSH BEACH
 AROX BAY
 EL SUENO
 BE BE BEACH

Assessment Roll and Tax List of Real Property in the Town of Powers

Cass County, Minnesota, for Taxes for the Year 1950.

Main data table with columns: IN WHOSE NAME ASSESSED, TO WHOM TRANSFERRED, DESCRIPTION OF PROPERTY, TRUE AND FULL VALUATIONS (LAND, BUILDINGS, MACHINERY), ASSESSED VALUATIONS (RURAL, ALL OTHER, MACHINERY), FINAL EQUALIZED VALUE, VALUATIONS BY SCHOOL DISTRICTS AS EQUALIZED BY DEPARTMENT OF TAXATION, SOLD FOR TAXES, TAXES (TOTAL, PAID, WHEN PAID), and REMARKS.

Contd. on next page

Vertical text along the right edge: MILLER'S POINT, HOODLAND, DES MOINES BEACH, HOSESBOE BEACH, JUDY BAY, EL SIENO, PEB BEACH

FORM 502 - 1949

IN WHOSE NAME ASSESSED TO WHOM TRANSFERRED



ASSESSED VALUATIONS

RURAL		ALL OTHER		MACHINERY	TOTAL ASSESSED VALUE	Total Assessed Value as Equalized by the Board of Review	FINAL EQUALIZED VALUE
Homestead to \$4,000 20%	Over \$4,000 and Non-Homestead 33 1/4%	Homestead Up to \$4,000 25%	Over \$4,000 and Non-Homestead 40%	Permanently Attached to Real Estate 33 1/4%			

Dollars	Dollars	Dollars	Dollars	Dollars	Dollars	Dollars	Dollars
26	33				33	36	
39	35				35	39	
67	58				58	67	
18	16				16	18	
25	25				25	28	
18	16				16	18	
51	51				51	61	
51	51				51	61	
17	17				17	19	
10	10				10	11	
10	10				10	11	
40	40				40	44	
30	30				30	35	
51	51				51	61	
10	10				10	11	
453	453				453	520	

VALUATIONS BY SCHOOL DISTRICTS AS EQUALIZED BY DEPARTMENT OF TAXATION

District No.	District No.	District No.	District No.	District No.	District No.
--------------	--------------	--------------	--------------	--------------	--------------

SOLD FOR TAXES	Tax including State Homestead	State Tax on Non-Homestead	SPECIAL TAXES	TOTAL TAXES	PAID	WHEN PAID	Number of Receipt	March Settlement 1951	June Settlement 1951	Penalty	November Settlement 1951	Penalty	Collections to First Monday in January 1952	Penalty	Delinquent on First Monday in January 1952	Total Delinquent Tax and Penalty	REMARKS	
1																		
2	SOLD FOR TAXES	36	726	16	742													
3																		
4																		
5																		
6		39	786	18	804	PAID IN FULL	OCT 31 1951	14086			804							
7																		
8		67	1352	30	1382	2nd Half Paid	OCT 31 1951	14472										
9	SOLD FOR TAXES	18	364	08	372	1st Half Paid	MAY 31 1951	8211			691							
10																		
11		18	364	12	372	2nd Half Paid	OCT 31 1951	13708										
12	SOLD FOR TAXES	61	1230		1230	1st Half Paid	MAY 31 1951	12469			309							
13		61	1230		1230	2nd Half Paid	SEP 18 1951	5415			182							
14		19	384	08	392	PAID IN FULL	SEP 22 1951	12750										
15		11	222	06	228	PAID IN FULL	MAY 31 1951	10774			1230							
16	SOLD FOR TAXES	11	222	06	228													
17		44	888	20	908													
18		35	706		706	PAID IN FULL	JUL 3 1951	9923			706							
19		61	1230		1230													
20		11	222	06	228	PAID IN FULL	MAY 25 1951	7637			228							
		236	492	130	606													

C.M. Taylor
 Nettie & Harvey Van Ege
 State of Minnesota
 Ole & Nellie Foss
 Margaret E. & Elmer W. Bloom
 John W. & Marie W. Spillane
 Martha Woods or Grace Bronson
 Florence C. Hamilton
 Horace & Edith M. Hedges
 Moses & Lila Jaffke
 " "
 David H. & Betty J. Hamilton
 Duane D. & Edith E. Enger
 Peter & Ethel Alexander
 Clinton J. & Florence F. Keep
 Enoch D. & Marie A. Savine

12 NW 1/4 of NW 1/4 NW 1/4 of NW 1/4 1 00
 E. 300' of W. 400' of S. 150' of N. 483' of NW 1/4 of NW 1/4 1 05
 W. 100' of N. 933' of NW 1/4 of NW 1/4 Street 9
 E. 50' of W. 750' of N. 333' of NW 1/4 of NW 1/4 Street 10
 E. 90' of W. 1000' of N. 333' of NW 1/4 of NW 1/4 70
 NW 1/4 of NW 1/4 Sec 8, 10 ac. & less N. 333' of W. 1000' NW 1/4 of NW 1/4 16 90
 S. 300' of N. 933' of W. 400' of NW 1/4 of NW 1/4 2 05
 (75' x 135') Cont. of NW 1/4 of NW 1/4 25
 E. 130' of W. 550' of N. 150' of NW 1/4 of NW 1/4 50

not all acc. to scale

4 255 51 61
 57 57 19
 51 51 17
 33 33 11
 30 30 10
 30 30 10
 132 132 44
 120 120 40
 55 120 175 35
 50 100 150 30
 35 270 305 61
 30 225 255 51
 33 33 11
 30 30 10
 952 1080 2032 236 284
 857 900 1757 199 254

392 of 431
 228 of 251
 908 of 999
 Pen. due 11 cents
 1230 of 1353 See Paid
 3500

Assessment and Tax List of Real Property in the Town of Powers

Cass County, Minnesota, for Taxes for the Year 1950.

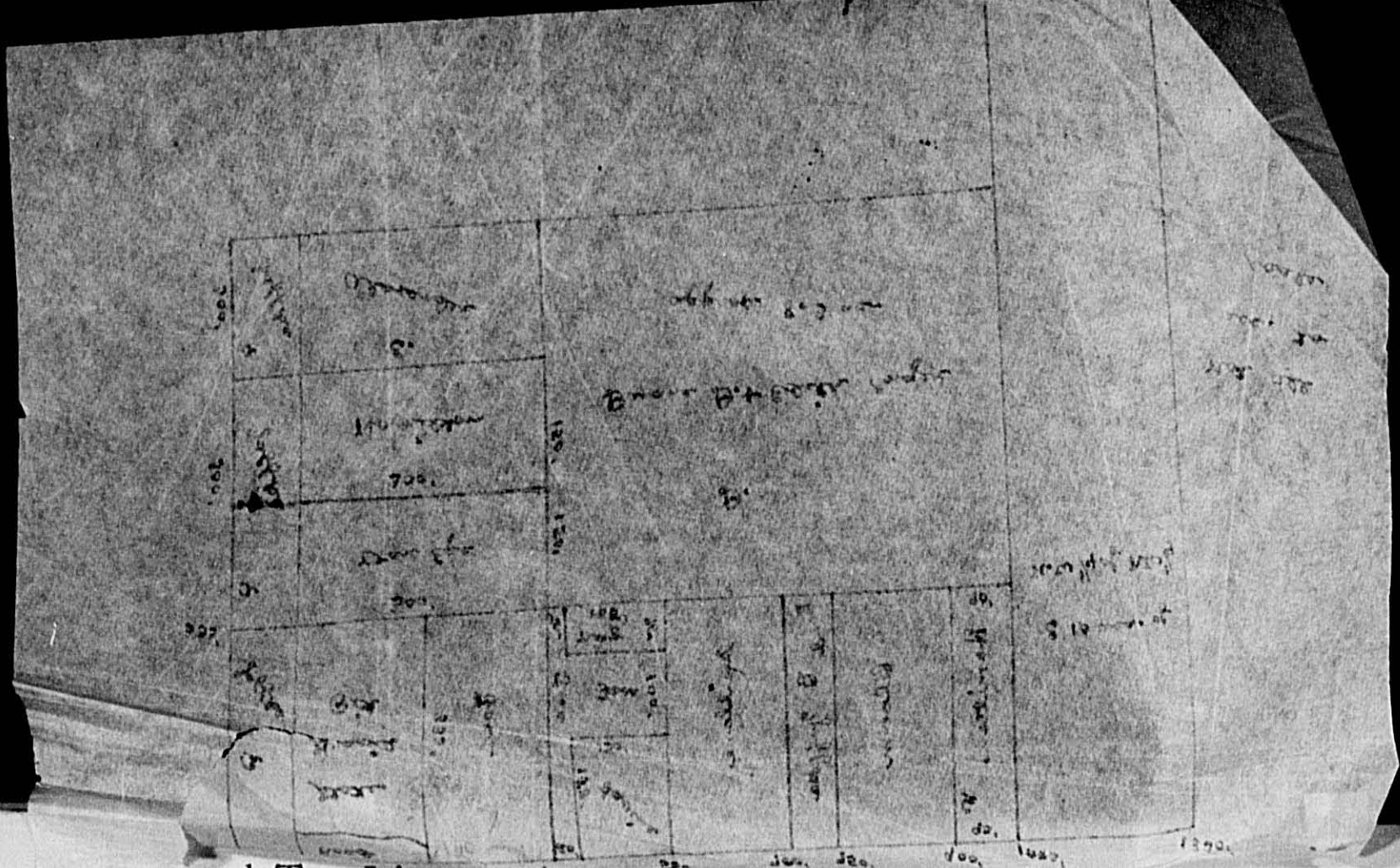


Table with columns: IN WHOSE NAME ASSESSED, TO WHOM TRANSFERRED, DESCRIPTION OF PROPERTY, TRUE AND FULL VALUATIONS, ASSESSED VALUATIONS, VALUATIONS BY SCHOOL DISTRICTS AS EQUALIZED BY DEPARTMENT OF TAXATION, SOLD FOR TAXES, PAID, WHEN PAID, Number of Receipt, March Settlement, June Settlement, November Settlement, Collections to First Monday in January, Delinquent on First Monday in January, Total Delinquent Tax and Penalty, REMARKS.

C.M. Taylor
Nettie & Harvey Van Eggen
State of Minnesota
Ole & Nellie Foss
Margaret E. & Elmer W. Bloom
John W. & Marie W. Spillane
Martha Woods or Thace Bronson
Florence C. Hamilton
Horace & Edith M. Hodges
Moses & Lila Jaffe
David H. & Betty J. Hamilton
Duane D. & Edith E. Enger
Peter & Ethel Alexander
Clinton J. & Florence F. Kepp
Enoch D. & Marie A. Lavine

Handwritten notes and descriptions of property parcels, including acreage and location details.

Main data table containing columns for assessed values, school district valuations, tax amounts, and payment status for each property owner.

Vertical text on the right edge of the page, possibly a page number or index reference.

Assessment Roll and Tax List of Real Property in the Town of Powers

Cass County, Minnesota, for Taxes for the Year 1950.

Table with columns: IN WHOSE NAME ASSESSED, TO WHOM TRANSFERRED, DESCRIPTION OF PROPERTY, TRUE AND FULL VALUATIONS, ASSESSED VALUATIONS, VALUATIONS BY SCHOOL DISTRICTS AS EQUALIZED BY DEPARTMENT OF TAXATION, SOLD FOR TAXES, TAXES, PAID, WHEN PAID, etc.

IN WHOSE NAME ASSESSED	TO WHOM TRANSFERRED	SUBDIVISION	Sec. or Lot	Town or Block	Rng.	Number of Acres of Land	No. School District	Indicate Homestead Yes or No	Indicate Agricultural Yes or No	TRUE AND FULL VALUATIONS				ASSESSED VALUATIONS					FINAL EQUALIZED VALUE	SOLD FOR TAXES	VALUATIONS BY SCHOOL DISTRICTS AS EQUALIZED BY DEPARTMENT OF TAXATION						Tax including State Homestead	State Tax on Non-Homestead	SPECIAL TAXES	TOTAL TAXES	PAID	WHEN PAID	Number of Receipt	March Settlement 1951	June Settlement 1951	November Settlement 1951	Penalty	Collections to First Monday in January 1952	Penalty	Delinquent on First Monday in January 1952	Total Delinquent Tax and Penalty	REMARKS														
										LAND Exclusive of Structures and Improvements	BUILDINGS and Other Structures	MACHINERY Permanently Attached to Real Estate	TOTAL True and Full Value	RURAL Homestead Up to \$4,000 20%	Over \$4,000 and Non-Homestead 33 1/3%	ALL OTHER Homestead Up to \$4,000 25%	Over \$4,000 and Non-Homestead 40%	MACHINERY Permanently Attached to Real Estate 33 1/3%			TOTAL ASSESSED VALUE	Total Assessed Value as Equalized by the Board of Review	District No.	District No.	District No.	District No.																	District No.	District No.	District No.	District No.	District No.									
										Dollars	Dollars	Dollars	Dollars	Dollars	Dollars	Dollars	Dollars	Dollars			Dollars	Dollars	Dollars	Dollars	Dollars	Dollars																	Dollars	Dollars	Dollars	Dollars	Dollars	Dollars	Dollars	Dollars	Dollars	Dollars	Dollars	Dollars	Dollars	Dollars
N. D. Coffland	<i>Jessie Coffland</i>	NE 1/4 of NE 1/4	34	139	30	40	Yes	No	110 90	240	50	290	65	58	65	58	65	58	65	58	65	58	65	58	65	1		1	1310	1310		1																								
Robert W. & Clara H. Kunde		NW 1/4 of NE 1/4				40			240	50	290	65	58	65	58	65	58	65	58	65	58	65	58	65	2		2	1532	1532		2	OCT 8 1951	13027	766	766					1310	1441															
Alfred J. & Carroll A. Parker		SW 1/4 of NE 1/4				40			345		345	69	76			69	76			69	76			3		3	4174	4174		3	OCT 8 1951	13027	2087	2087																						
N. Harold & Ruth A. West		W 77 1/2' of S. 160' of Lot 2				2 85			390	585	895	179	207			179	207			179	207			4		4	2762	60	2822		4	OCT 1 8 1951	13321	1411	1411																					
Waldo E. & Emmy M. Suelken		NE 1/4 of NW 1/4				40			375		375					125	137			125	137			5		5	3590	78	3668		5	PAID IN FULL APR 3 1951	5412	3668																						
"		"				40			375		375				197	217			197	217			6		6	4376	96	4472		6	PAID IN FULL MAY 3 1951	10082	4472																							
H. Frank & Libbie M. Wilson		SW 1/4 of NW 1/4 Lot 1				35 60			165	18	183	61	55			117	129			117	129			7		7	2602	56	2658		7	PAID IN FULL MAY 3 1951	10082	2658																						
Robert W. & Clara Kunde		SE 1/4 of NW 1/4				40			350		350	70	64			55	61			55	61			8		8	1230	26	1256		8	PAID IN FULL JAN 2 2 1951	215	1256																						
Harry L. Mary A., Steve J. & Mayme Harrington		120' x 77 1/2' of Lot 2				2 05			320		320	64				64	70			64	70			9		9	1412		1412		9	OCT 8 1951	13027	706	706																					
Carroll & Alfreda J. Parker		NE 1/4 of SW 1/4				40			438		438	146				43	51			43	51			10		10	1028	22	1050		10	PAID IN FULL APR 2 5 1951	5106	1050																						
Carl H. & Luca O. Falk		NW 1/4 of SW 1/4 Lot 3				35 70			399		399	133				133	146			133	146			11		11	2944	64	3008		11	OCT 1 8 1951	13321	1504	1504																					
State of Minnesota		SW 1/4 of SW 1/4							279		279	93				93	102			93	102			12	SOLD FOR TAXES		102	2058	44	2102		12																								
State of Minnesota		SE 1/4 of SW 1/4																						13																																
State of Minnesota																								14																																
State of Minnesota																								15																																
Jaurita L. Riley		NE 1/4 of SE 1/4				40			339		339	113				103	113			103	113			16		16	2278	50	2328		16	PAID IN FULL MAY 3 1 1951	10060	2328																						
Alfreda J. & Carroll A. Parker		NW 1/4 of SE 1/4				40			321	528	849													17		17	5708	124	5832		17	OCT 1 8 1951	13321	2916	2916																					
State of Minnesota		SW 1/4 of SE 1/4							392	440	732													18		18																														
State of Minnesota		SE 1/4 of SE 1/4																						19		19																														
									4308	2033	6341	418	1417							418	1417			20		20	37004	620	37624		20																									
									3919	1711	5630	370	1260							1630	1835			21		21																														

LILLIE S. POIN
WOODLAND
DES MOINES BEACH
FORESHORE BEACH
ARROYO HAY
EL SIENRO
PINE BEACH

IN WHOSE NAME ASSESSED	TO WHOM TRANSFERRED	DESCRIPTION OF PROPERTY			TRUE AND FULL VALUATIONS								FINAL EQUALIZED VALUE	SOLD FOR TAXES	VALUATIONS BY SCHOOL DISTRICTS AS EQUALIZED BY DEPARTMENT OF TAXATION						SPECIAL TAXES	TOTAL TAXES	PAID	WHEN PAID	Number of Receipt	March Settlement 1951	June Settlement 1951	Penalty	November Settlement 1951	Penalty	Collections to First Monday in January 1952	Penalty	Delinquent on First Monday in January 1952	Total Delinquent Tax and Penalty	REMARKS		
					LAND EXCLUSIVE OF STRUCTURES AND IMPROVEMENTS		BUILDINGS AND OTHER STRUCTURES	MACHINERY PERMANENTLY ATTACHED TO REAL ESTATE	TOTAL TRUE AND FULL VALUE	RURAL		ALL OTHER			MACHINERY PERMANENTLY ATTACHED TO REAL ESTATE	TOTAL ASSESSED VALUE	DISTRICTS																				
		Acres	100ths	No.	No.	No.				No.	No.	No.					No.	No.	No.	Rate																Rate	Rate
							Homestead Up to \$4,000 20%	Over \$4,000 and Non-Homestead 33 1/3%	Homestead Up to \$4,000 25%						Over \$4,000 and Non-Homestead 40%	Total Assessed Value as Equalized by the Board of Review																					
Lola Falk		1			55				22	20	22	1	22			476	10		486		1 PAID IN FULL	May 4 1951	5893			486											
"	"	2			50				20	70	82		82			1776	36		1812		2 PAID IN FULL	MAY 1 1951	5893			1812											
"	"	3			55				22	20	22		22			476	10		486		3 PAID IN FULL	SEP 1 0 1951	12532			486			14								
Arthur Falk		4			55				20	20	22		22			476	10		486		4 PAID IN FULL	SEP 1 0 1951	12532			486			15								
Alex H. & Virginia E. Wickliff		5			50	1140			299	250	299		299			6478			6478		5 PAID IN FULL	MAY 3 1 1951	17952			6478											
"	"	6			48				13	12	13		13			212			282		6 PAID IN FULL	MAY 3 1 1951	7952			282											
Frederick J. & Nellie Meier		7			55	360			166	140	166		166			3596	74		3670		7 PAID IN FULL	MAY 3 1 1951	10092			3670											
Emma O. Fuller		8			50	400			180	180	214		214			4636	94		4730		8 PAID IN FULL	FEB 8 1951	912	4730		3670											
Everett A. Reynolds		9			55	360			166	140	166		166			3596	74		3670		9 PAID IN FULL	APR 3 0 1951	5408			3670											
"	"	10			55				22	20	22		22			476	10		486		10 PAID IN FULL	APR 3 0 1951	5408			4156											
Raymond W. Peterson		11			55	340			118	100	118		118			2556	52		2608		11 PAID IN FULL	SEP 1 0 1951	12403			2608											
E. R. Foster		12			55	600			262	220	262		262			5676	116		5792		12 PAID IN FULL	APR 2 5 1951	5113			5792											
Lizzie M. Wilson		13			55	720			310	260	310		310			6716	136		6852		13 PAID IN FULL	JAN 2 2 1951	215	6852			6852										
		14																																			
		15																																			
		16																																			
		17																																			
		18																																			
		19																																			
		20																																			
					713	4050			312	1406			1452	1718		37216	622		37838							11582	22676	3580									

WOODLAND MILLER'S POINT

HAIKLAND'S LAKESHORE ON FAIRBANKS

DES MOINES BEACH FORESHORE BEACH

DES MOINES BEACH FORESHORE BEACH

Folio 50 - 1948 - 1949 - 1950

Main table with columns for description of property, assessed valuations, school district valuations, and taxes. Includes rows for owners like Mrs. Wm. Cummins and Charles J. Lund.

MILLER'S POINT WOODLAND DES MOINES BEACH

HAWARD'S INVESTMENT HOUSEHOLE BEACH HOY DAY EL SUONO

EDGE

MILLER'S POINT
WOODLAND
HORSESHOE BEACH
ES MOINES BEACH

HANFORD'S WAREHOUSE
ON FAIRBANKS

IN WHOSE NAME ASSESSED		TO WHOM TRANSFERRED		DESCRIPTION OF PROPERTY				TRUE AND FULL VALUATIONS							ASSESSED VALUATIONS							FINAL EQUALIZED VALUE	SOLD FOR TAXES	VALUATIONS BY SCHOOL DISTRICTS AS EQUALIZED BY DEPARTMENT OF TAXATION						Tax including State Homestead	State Tax on Non-Homestead	SPECIAL TAXES	TOTAL TAXES	PAID	WHEN PAID	Number of Receipt	March Settlement 1951	June Settlement 1951	Penalty	November Settlement 1951	Penalty	Collections to First Monday in January 1952	Penalty	Delinquent on First Monday in January 1952	Total Delinquent Tax and Penalty	REMARKS														
Subdivision	Sec. or Lot	Town or Block	Rng.	No. of Acres of Land	Land Exclusive of Structures and Improvements	Buildings and Other Structures	Machinery Permanently Attached to Real Estate	TOTAL True and Full Value	Homestead Up to \$4,000 20%	Over \$4,000 and Non-Homestead 33 1/3%	Homestead Up to \$4,000 25%	Over \$4,000 and Non-Homestead 40%	Machinery Permanently Attached to Real Estate 33 1/3%	TOTAL ASSESSED VALUE	Total Assessed Value as Equalized by the Board of Review	District No.	District Rate	District No.	District Rate	District No.	District Rate			District No.	District Rate																																			
SUBDIVISION																																																												
Horsehoe Beach		Part of lot 1 Sec. 21-139-30																																																										
Nellie B. Bjork	1				65	200		265				106		90	106									106	2276	46	2342	1 PAID IN FULL	MAY 1 7 1951	6620		2342																												
Evan & Nellie Bjork	2				65	165		225				24		24	26									26	564	12	576	2 PAID IN FULL	MAY 1 7 1951	6620		576																												
Bertha & Jake Blough	3				65			65				26		24	26									26	564	12	576	3 PAID IN FULL	MAR 5 1951	3253		576																												
"	4				65			65				26		24	26									26	564	12	576	4 PAID IN FULL	MAR 5 1951	3253		576																												
"	5			n/2 of	35			35				14		12	14									14	304	06	310	5 PAID IN FULL	MAR 5 1951	3253		310																												
E.A. & Mildred C. Ervin	6			n/2 of	35			35				14		12	14									14	304	06	310	6 PAID IN FULL	MAR 5 1951	3253		310																												
"	7				65			65				26		24	26									26	564	12	576	7 PAID IN FULL	MAR 5 1951	3253		576																												
"	8			Terna Violow	65			65				26		24	26									26	564	12	576	8 PAID IN FULL	FEB 20 1951	3138	576																													
Terna Violow	9				65			65				26		24	26									26	564	12	576	9 PAID IN FULL	FEB 20 1951	3138	576																													
"	10				65			65				26		24	26									26	564	12	576	10 PAID IN FULL	FEB 20 1951	3138	576																													
"	11				65	270		335				134		114	134									134	2904	58	2962	11 PAID IN FULL	FEB 20 1951	3138	1962																													
"	12				65			65				26		24	26									26	564	12	576	12 PAID IN FULL	FEB 20 1951	3138	576																													
J.H. & Margaret Milroy	13				65	470		535				222		188	222									222	4810	98	4908	13 PAID IN FULL	JAN 29 1951	572	4908																													
"	14				65			65				26		24	26									26	564	12	576	14 PAID IN FULL	JAN 29 1951	572	576																													
"	15				65			65				26		24	26									26	564	12	576	15 PAID IN FULL	JAN 29 1951	572	576																													
"	16				65			65				26		24	26									26	564	12	576	16 PAID IN FULL	JAN 29 1951	572	576																													
Don O. Newland	17				65	3600		3665				1466		1224	1466									1466	31764	646	32410	17 PAID IN FULL	APR 30 1951	5244	32410																													
"	18				65			65				26		24	26									26	564	12	576	18 PAID IN FULL	APR 30 1951	5214		576																												
"	19				65			65				26		24	26									26	564	12	576	19 PAID IN FULL	APR 30 1951	5214		576																												
Frank Hare	20				65	211		276			69	59	69	59	69									69	1496		1496	20 PAID IN FULL	11-2-51	1	1496																													
					1240	4771		6011			69	2294		69	2294										69	51210	1016	52226				13398	38828																											
					1140	3976		5116			59	1953		59	1953										59	2363		2363																																

Tabular Statement

THE SURENO

IN WHOSE NAME ASSESSED	TO WHOM TRANSFERRED	DESCRIPTION OF PROPERTY			TRUE AND FULL VALUATIONS										FINAL EQUALIZED VALUE	SOLD FOR TAXES	VALUATIONS BY SCHOOL DISTRICTS AS EQALIZED BY DEPARTMENT OF TAXATION						Tax including State Homestead	State Tax on Non-Homestead	SPECIAL TAXES	TOTAL TAXES	PAID	WHEN PAID	Number of Receipt	March Settlement 1951	June Settlement 1951	Penalty	November Settlement 1951	Collections to First Monday in January 1952	Delinquent on First Monday in January 1952	Total Delinquent Tax and Penalty	REMARKS						
		No. of School District	Indicate Homestead Yes or No	Indicate Agricultural Yes or No	LAND Exclusive of Structures and Improvements	BUILDINGS and Other Structures	MACHINERY Permanently Attached to Real Estate	TOTAL True and Full Value	RURAL				ALL OTHER				MACHINERY Permanently Attached to Real Estate	TOTAL ASSESSED VALUE	Total Assessed Value as Equalized by the Board of Review	District No.	District No.	District No.																District No.	District No.				
									Rate	Rate	Rate	Rate	Rate	Rate						Rate	Rate	Rate																Rate	Dollars	Dollars	Dollars	Dollars	Dollars
Hamer + Ada Doty	Fred Spomer	Lot 1 Sec. 32-13930 Hats Edge Shore	1	1																																							
			2	2																																							
			3	3																																							
			4	4																																							
			5	5																																							
			6	6																																							
			7	7																																							
			8																																								
			9																																								
			10																																								
			11																																								
			12																																								
			13																																								
			14																																								
			15																																								
			16																																								
			17																																								
			18																																								
			19																																								
			20																																								

Tabular Statement
Personal

Total 1469.08
Total Collected 1074.98
For 7 Lines 232.56