

Assessment & Tax Law - 1955
Powers

TABULAR SCHEDULE OF VALUATIONS,
LEVIED IN THE Town OF Powers

RATES AND TAXES
COUNTY OF CASS, STATE OF MINNESOTA

School District No.	VALUATION BY SCHOOL DISTRICTS				RATE OF STATE TAXES		RATE OF COUNTY TAXES										RATE OF TOWN TAXES										RATE OF SCHOOL TAXES									
	Agri-cultural Lands	Non-Agri-cultural Lands	Personal Property	Total Value of all Property except Money and Credits	Total Rate of State Tax	Total Rate of County Tax	Rev.	R. & E.	Welfare	Bonds and Int.	Local Home Bldg Fund	Total Rate of County Tax	Rev.	R. & E.	Drag Tax	State Loan	Phone	Total Rate of Town Tax	Local	Special	State Loan	Deficiency	Tuition	Transportation	C.O.	Total Rate of Sch'l Tax	Total Rate of all Taxes									
Ind. #30	30,552	11,826	4,355	51,488	H. 3.98	103.82	28.01	14.01	49.83	9.97	2.00	4.9	5.7	1.0	5.0	16.6	1.25	62.37	1.08	8.8					98.25	222.65										
Un	6,057	2,168	1,545	9,770													1.50	62.37	1.08	8.8					123.25	247.65										
	36,609	13,994	10,655	61,258													1.70	40.	1.08	15.					77.08	201.48										
					N. 11.5. 17												1.40	40.	1.08	15.					97.08	221.48										
					9.15																															
Assessed Value Homestead	Rural 18,592	All Other 541	Personal Property	Total 19,133																																
Non-Homestead	27,613	3857	10,655	42,125																																
Total	46,205	4394	10,655	61,258																																

LOCAL 1 MILL AND SPECIAL SCHOOL TAXES BY DISTRICTS										ALL OTHER TAXES				
Local 1 Mill	Special	State Loan	Deficiency	Tuition	Transportation	FUNDS	Rate	Amounts						
3491	87268	21715	3770	30718		State - Non-Homestead,		21736						
1658	82905	103416	1771	14591		State - Homestead,		24381						
650	12114	24228	654	9086		County Revenue,		171594						
371	14852	14852	401	5570		County Road and Bridge,		85827						
						County Welfare,		305259						
						Bonds and Interest		61076						
						County House Bldg		12252						
						Town Revenue,		30018						
						Town Road and Bridge,		34919						
						Town Drag,		6126						
						Town State Loan,		30631						
						Phone		101694						
						School Local 1 Mill,		6126						
						School Special,		197139						
						School State Loan,		360211						
						Deficiency								
						Tuition		6616						
						Transportation		59965						
						C.O.		630057						

Total Levy, \$ 14,138.76

Total Number of Acres 12,332.37

State of Minnesota, }
COUNTY OF CASS }
Auditor of said County and State aforesaid, do hereby certify that the foregoing is true and correct Schedule, showing the valuation of all the taxable property, in the Town of Powers, in said County, the several rates of Taxation and Totals of the several Tax Funds levied thereon for the year A. D. 1955

Witness my hand and official seal, this 19th day of December, A. D. 1955

SEAL

L. C. Peterson
County Auditor

By Helen Billen, Deputy

Total Taxes Real Estate 11,594.38
Pers. Prop. 2,544.38
Total 14,138.76

or Ceased to be Homesteads

Sec. or Lot	Town or Block	Range	Number of Acres of Land
			Acres 100sq

Real Estate
John Woodland
Delia Jones Beach
Sub-Homestead Beach
Laroy Bay

COLLECTIONS OF TAXES OF 1956

Town

OF Powers

CASS COUNTY, MINNESOTA

FUNDS	MARCH SETTLEMENT 1956	JUNE SETTLEMENT 1956	NOV. SETTLEMENT 1956	Amount Collected from Nov. 1956 to First Monday in Jan. 1957	REDUCTIONS	Total Reductions and Collected	BALANCE UNCOLLECTED	ADDITIONS	Total Uncollected to First Monday in January, 1957
State-Non-Homestead	5105	10156	32144						
State-Homestead	4270	11853	4354	214					
County Revenue	36052	83421	30630	1509					
County Road and Bridge	15031	41725	15321	753					
County Welfare	53463	148407	54491	2684					
County Bond and Interest	10697	27493	60903	538					
Court House	2146	5957	2187	108					
Town Revenue	5257	18593	5358	263					
Town Road and Bridge	6116	16976	6233	307					
Town Drag	1073	2978	1093	55					
Town State Loan	5365	14891	5468	269					
Phone									
School Local 1 Mill	1072	2978	1093	53					
School Special	41256	95389	32851	1307					
School State Loan									
Deficiency	62884	174408	63684	3179					
Tuition									
Transportation	1159	3217	1181	58					
C.O.	10560	29353	10876	525					
	255506	685995	248967	11824					

	SCHOOL DISTRICT NO.	LOCAL 1 MILL	SPECIAL	STATE LOAN	Deficiency	C.O.	Transport	TOTALS
MARCH SETTLEMENT	Q#30 Q Un. No Un. No#30	405 23 187 487	10129 458 6295 21374		25269 916 6295 30404	3565 344 2361 4290	438 25 120 526	39806 1766 15278 60081
	Totals	1072	41256		62884	10560	1159	116931
JUNE SETTLEMENT	Q Un. No Un. Q#30 No#30	360 138 1653 227	7382 5528 41078 4143		14766 5524 102459 57857	5537 2071 14464 1289	399 149 1734 995	28453 73406 161402 102084
	Totals	2978	95389		174408	29353	3217	305345
NOVEMBER SETTLEMENT	Q Un. No Un. Q#30 No#30	99 103 713 748	1977 4129 17828 8977		3954 4129 44478 11123	1483 1547 6276 1569	107 111 770 193	7620 10020 70065 21980
	Totals	1093	32851		63684	10876	1181	109685
NOVEMBER to JANUARY	Q Un. Q#30	08 45	162 1145		322 2857	124 404	09 49	622 4500
	Totals	53	1307		3179	528	58	5122
ADDITIONS	School District No.							
	Totals							
REDUCTIONS	School District No.							
	Totals							

Not Ceased to be Homesteads

HOMESTEADS

Sec. or Lot	Town or Block	Range	Number of Acres of Land
			Acres 100ths

Real Estate

Point

John Goodland

Delphine Beach

Sub-Homestead Beach

and Inroy Bay

Assessment Roll and Tax List of Real Property in the Town of Powers, Cass County, Minnesota, for Taxes for the Year 1955.

Real Estate

IN WHOSE NAME ASSESSED	TO WHOM TRANSFERRED	DESCRIPTION OF PROPERTY				TRUE AND FULL VALUATIONS										FINAL EQUALIZED VALUE	
		SUBDIVISION	Sec. or Lot	Town or Block	No. of Acres of Land	LAND Exclusive of Structures and Improvements	BUILDINGS and Other Structures	MACHINERY Permanently Attached to Real Estate	TOTAL True and Full Value	RURAL		ALL OTHER		MACHINERY Permanently Attached to Real Estate	TOTAL ASSESSED VALUE		Total Assessed Value as Equalized by the Board of Review
										Homestead Up to \$1,000 20%	Over \$4,000 and Non-Homestead 33 1/3%	Homestead Up to \$1,000 25%	Over \$1,000 and Non-Homestead 40%				
Earl & Lillian Stadler	State of Minnesota	NE 1/4 of NE 1/4 Lot 1	2	13720	3788												
	State of Minnesota	NW 1/4 of NE 1/4 Lot 2															
	State of Minnesota	SW 1/4 of NE 1/4															
	State of Minnesota	SE 1/4 of NE 1/4															
Louise Wetzel		NE 1/4 of NW 1/4 Lot 3			3788												
John M. Johnson		SW 1/4 of NW 1/4			3788												
		SW 1/4 of NW 1/4			3665												
Attorney Edwin R. Wagner	Dewey, H. Work	SE 1/4 of NW 1/4			40												
		NE 1/4 of SW 1/4															
		NW 1/4 of SW 1/4															
		SW 1/4 of SW 1/4															
		SE 1/4 of SW 1/4															
Willie L. & Berth K. Wilson	State of Minnesota	6 100' of Lot 6 W. of 274 1/2' line															
Jay Forrest	State of Minnesota	NE 1/4 of SE 1/4 that part of Lot 6 lying E of 274 1/2' line			40												
Ballin Frank Pappas	State of Minnesota	SW 1/4 of SE 1/4 Lot 7			4685												
C. A. & Florence L. Larson		SE 1/4 of SE 1/4															
		W. 13.6' across of Lot 6 W. of 274 1/2' line			2900												

SOLD FOR TAXES	VALUATIONS BY SCHOOL DISTRICTS AS EQUALIZED BY DEPARTMENT OF TAXATION						Tax Including State Homestead	State Tax on Non-Homestead	SPECIAL TAXES	TOTAL TAXES	PAID	WHEN PAID	Number of Receipt	March Settlement 1956	June Settlement 1956	Penalty	November Settlement 1956	Penalty	Collections to First Monday in January 1957	Penalty	Delinquent on First Monday in January 1957	Total Delinquent Tax and Penalty	REMARKS	
	District No.	District No.	District No.	District No.	District No.	District No.																		
	Rate	Rate	Rate	Rate	Rate	Rate																		
1	H 37						9.46		7.46														PAID IN FULL MAY 31 1956 12192	
2																								
3																								
4																								
5																								
6	H 49						9.88	26	10.14															PAID IN FULL OCT 31 1956 16896
7	H 80						32.34	42	32.76															PAID IN FULL MAY 7 1956 5984
8	H 29						5.84		5.84															PAID IN FULL MAY 7 1956
9	H 80						16.12	42	16.54															1st Half Paid MAY 14 1956 2333 2nd Half Paid MAY 21 1956 2163
10																								
11																								
12																								
13																								
14																								
15																								
16																								
17																								
18	H 80						16.12	42	16.54															PAID IN FULL MAY 31 1956 12056
19																								
20	H 60						11.208		12.08															PAID IN FULL MAY 31 1956 12055
	H 126						32.34																	
	H 209						67.50	42																
	H 335						94.84																	

John Woodland, Deputies Beach, Sub. Horseshoe Beach and Tuloy Bay

Assessment Roll and Tax List of Real Property in the Town of Powers

*Indicate Type of Property: R-Residential, C-Commercial, I-Industrial, U-Utility, F-Farm

Cass County, Minnesota, for Taxes for the Year 1955.

Table with columns: IN WHOSE NAME ASSESSED, TO WHOM TRANSFERRED, DESCRIPTION OF PROPERTY, TRUE AND FULL VALUATIONS, ASSESSED VALUATIONS, VALUATIONS BY SCHOOL DISTRICTS AS EQUALIZED BY DEPARTMENT OF TAXATION, TAX INCLUDING STATE HOMESTEAD, SPECIAL TAXES, TOTAL TAXES, PAID, WHEN PAID, Number of Receipt, March Settlement 1956, June Settlement 1956, November Settlement 1956, Collections to First Monday in January 1957, Delinquent on First Monday in January 1957, Total Delinquent Tax and Penalty, REMARKS.

Assessment Roll and Tax List of Real Property in the Town of Powers

*Indicate Type of Property: R-Residential, C-Commercial, I-Industrial, U-Utility, F-Farm

Table with columns: IN WHOSE NAME ASSESSED, TO WHOM TRANSFERRED, SUBDIVISION, TRUE AND FULL VALUATIONS, ASSESSED VALUATIONS, FINAL EQUALIZED VALUE. Includes handwritten entries for various property owners like Lavene & Martha L. Vincent.

Cass County, Minnesota, for Taxes for the Year 1955.

Table with columns: VALUATIONS BY SCHOOL DISTRICTS AS EQUALIZED BY DEPARTMENT OF TALENTION, TAXES, PAID, WHEN PAID, Number of Receipts, March Settlement 1956, June Settlement 1956, November Settlement 1956, Penalty, Collections to First Monday in January 1957, Delinquent on First Monday in January 1957, Total Delinquent Tax and Penalty, REMARKS. Includes handwritten entries for tax payments and dates.

Vertical text on the right edge of the page: Millers Point, School, Moorland, De Moines Beach, Sub, Progressive Beach, and Infor Day.

Assessment Roll and Tax List of Real Property in the Town of Powers, Cass County, Minnesota, for Taxes for the Year 1955.

Table with columns: WHOSE NAME ASSESSED, TO WHOM TRANSFERRED, DESCRIPTION OF PROPERTY, TRUE AND FULL VALUATIONS, ASSESSED VALUATIONS, FINAL EQUALIZED VALUE. Includes handwritten entries for various property owners like Paul J. & Mary J. Eklund and Richard L. & Esther M. Gillespie.

Cass County, Minnesota, for Taxes for the Year 1955.

Table with columns: VALUATIONS BY SCHOOL DISTRICTS AS EQUALIZED BY DEPARTMENT OF TAXATION, Tax including State Homestead, SPECIAL TAXES, TOTAL TAXES, PAID, WHEN PAID, Number of Receipt, March Settlement, June Settlement, November Settlement, Collections to Farm, Delinquent on First Monday in January, Total Delinquent Tax and Penalty, REMARKS. Includes handwritten notes like 'PAID IN FULL' and 'Paid Under Protest'.

Vertical text on the right edge of the page, including 'Point', 'Woodland', 'De Moines Beach', 'Horseshoe Beach', and 'Lafayette Bay'.

Assessment Roll and Tax List of Real Property in the Town of Powers, Cass County, Minnesota, for Taxes for the Year 1955.

Table with columns: IN WHOSE NAME ASSESSED, TO WHOM TRANSFERRED, DESCRIPTION OF PROPERTY, TRUE AND FULL VALUATIONS, ASSESSED VALUATIONS, and FINAL EQUALIZED VALUE. Includes handwritten entries for Griffith, Zoffke, and Johnson.

Cass County, Minnesota, for Taxes for the Year 1955.

Table with columns: VALUATIONS BY SCHOOL DISTRICTS AS EQUALIZED BY DEPARTMENT OF TAXATION, TAX INCLUDING STATE HOMESTEAD, STATE TAX ON NON-HOMESTEAD, SPECIAL TAXES, TOTAL TAXES, PAID, WHEN PAID, Number of Receipt, March Settlement, June Settlement, November Settlement, Collections to First Monday in January 1957, Delinquent on First Monday in January 1957, Total Delinquent Tax and Penalty, and REMARKS. Includes handwritten tax amounts and dates.

Assessment Roll and Tax List of Real Property in the Town of Powers, Cass County, Minnesota, for Taxes for the Year 1955.

*Indicate Type of Property: R-Residential, C-Commercial, I-Industrial, U-Utility, F-Farm

IN WHOSE NAME ASSESSED	TO WHOM TRANSFERRED	DESCRIPTION OF PROPERTY				TRUE AND FULL VALUATIONS										FINAL EQUALIZED VALUE						
		SUBDIVISION	Sec. of Lot	Town or Block	Rng.	Number of Acres of Land	No. School District	Indicate Homestead Yes or No	Indicate Agricultural Yes or No	Indicate Type of Property	LAND	BUILDINGS	MACHINERY	TOTAL	RURAL		ALL OTHER		MACHINERY	TOTAL	Total Assessed Value as Equalized by the Board of Review	
											Exclusive of Structures and Improvements	and Other Structures	Permanently Attached to Real Estate	True and Full Value	Homestead Up to \$4,000 20%		Over \$4,000 and Non-Homestead 33 1/3%	Homestead Up to \$4,000 25%	Over \$4,000 and Non-Homestead 40%	Permanently Attached to Real Estate 33 1/3%	ASSESSED VALUE	Dollars
Di. L. P. & Emma C. Frederick	Frank Lang	NE 1/4 of NE 1/4 W. 1/4 Sec. 18	13930	28	65	30	40	40														
State of Minnesota		NW 1/4 of NE 1/4																				
State of Minnesota		SW 1/4 of NE 1/4																				
Moses F. & Lila E. Zaffke		SE 1/4 of NE 1/4			40																	
"	"	NE 1/4 of NE 1/4			680																	
Violet Sundby		NE 1/4 of NW 1/4			40																	
State of Minnesota		NW 1/4 of NW 1/4																				
State of Minnesota		SW 1/4 of NW 1/4																				
Violet Sundby		SE 1/4 of NW 1/4			40																	
State of Minnesota		NE 1/4 of SW 1/4																				
Paul E. & Ida M. Sawyer		NW 1/4 of SW 1/4			2524																	
Charles H. & Mary C. Smith		SW 1/4 of SW 1/4			3494																	
Caroline E. & Ralph Sandoy		SE 1/4 of SW 1/4			20																	
"	"	SE 1/4 of SW 1/4			20																	
Leslie W. Sawyer		NE 1/4 of SE 1/4			40																	
"	"	NW 1/4 of SE 1/4			40																	
"	"	SW 1/4 of SE 1/4			2850																	
"	"	SE 1/4 of SE 1/4			40																	
Edward Buckner, et al		W. 23 rd. of NW 1/4 of SE 1/4			1150																	

Cass County, Minnesota, for Taxes for the Year 1955.

SOLD FOR TAXES	VALUATIONS BY SCHOOL DISTRICTS AS EQUALIZED BY DEPARTMENT OF TAXATION						Tax Including State Homestead	State Tax on Non-Homestead	SPECIAL TAXES	TOTAL TAXES	PAID	WHEN PAID	Number of Receipt	March Settlement 1956	June Settlement 1956	Penalty	November Settlement 1956	Penalty	Collections to First Monday in January 1957	Penalty	Delinquent on First Monday in January 1957	Total Delinquent Tax and Penalty	REMARKS
	District No.	District No.	District No.	District No.	District No.	District No.																	
	Rate	Rate	Rate	Rate	Rate	Rate																	
1	1111						2472		2472	1	PAID IN FULL APR 12 1956	5741		2472									
2										2													
3										3													
4	27						602		602	4	Balance Paid OCT 15 1956	14312											
5	8						128		128	5	Part Paid MAY 31 1956	12067		351		251							
6										6	Part Paid MAY 31 1956			87		87							
7	67						1492	34	1526	7	Balance Paid OCT 15 1956										1526		
8										8													
9	67						1492	34	1526	9											1526		
10										10													
11										11													
12	39						868		868	12	Balance Paid OCT 31 1956	15898											
13	78						1726	40	1776	13	Part Paid MAY 31 1956	9794		467		402							
14							2626		2626	14	PAID IN FULL MAY 31 1956/2095			1726									
15							2030		2030	15	Balance Paid AUG 8 1956	13511											
16	54						1202	28	1230	16	Part Paid MAY 31 1956	12098		2198		2498							
17	47						1046	24	1070	17	Balance Paid AUG 8 1956	15072											
18	15						334	08	342	18	Part Paid MAY 31 1956												
19	77						1714	70	1784	19	Balance Paid AUG 8 1956												
20	145						4136	86	4222	20	2nd Half Paid OCT 31 1956												
	405						8742	294	22222		1st Half Paid MAY 31 1956			9977		4969					42222	4644	
	590						13136														7274		

Assessment Roll and Tax List of Real Property in the Town of Powers of Powers County, Minnesota
* Indicate Type of Property: R-Residential, C-Commercial, I-Industrial, U-Utility, F-Farm

Table with columns: IN WHOSE NAME ASSESSED, TO WHOM TRANSFERRED, DESCRIPTION OF PROPERTY, TRUE AND FULL VALUATIONS, ASSESSED VALUATIONS, FINAL EQUALIZED VALUE. Includes entries for Eugene D & Mary Landis, E.R. Lippka, Arnold B. & Sophia A. Anderson, Maurice J. & Lillian J. ...

Cass County, Minnesota, for Taxes for the Year 1955.

Table with columns: SOLD FOR TAXES, VALUATIONS BY SCHOOL DISTRICTS AS EQUALIZED BY DEPARTMENT OF TAXATION, Tax including State Homestead, State Tax on Non-Homestead, SPECIAL TAXES, TOTAL TAXES, PAID, WHEN PAID, Number of Receipt, March Settlement 1955, June Settlement 1955, Penalty, November Settlement 1955, Penalty, Collections to First Monday in January 1957, Penalty, Delinquent on First Monday in January 1957, Total Delinquent Tax and Penalty, REMARKS. Includes entries for 1, 2, 3, 4, 5, 6, 7, 8, 9, 10, 11, 12, 13, 14, 15, 16, 17, 18, 19, 20.

Assessment Roll and Tax List of Real Property in the Town of Powers

Cass County, Minnesota, for Taxes for the Year 1955.

Table with columns: IN WHOSE NAME ASSESSED, TO WHOM TRANSFERRED, DESCRIPTION OF PROPERTY, TRUE AND FULL VALUATIONS, ASSESSED VALUATIONS, VALUATIONS BY SCHOOL DISTRICTS AS EQUALIZED BY DEPARTMENT OF TAXATION, SOLD FOR TAXES, SPECIAL TAXES, TOTAL TAXES, PAID, WHEN PAID, Number of Receipt, March Settlement 1956, June Settlement 1956, Penalty, November Settlement 1956, Penalty, Collections to First Monday in January 1957, Penalty, Delinquent on First Monday in January 1957, Total Delinquent Tax and Penalty, REMARKS.

519.00

Handwritten summary of totals for rows 17-20, including values like 1424, 534, 11309, 1958, 534, 534, 11309, 1958.

2160

Vertical text on the right edge of the page: Point, Woodland, Deladores Beach, Horseshoe Beach, and Inlay Bay.

Assessment Roll and Tax List of Real Property in the Town of Powers

*Indicate Type of Property: R-Residential, C-Commercial, I-Industrial, U-Utility, F-Farm

Table with columns: IN WHOME NAME ASSESSED, TO WHOM TRANSFERRED, DESCRIPTION OF PROPERTY, TRUE AND FULL VALUATIONS, ASSESSED VALUATIONS, FINAL EQUALIZED VALUE.

Cass County, Minnesota, for Taxes for the Year 1955.

Table with columns: VALUATIONS BY SCHOOL DISTRICTS AS EQUALIZED BY DEPARTMENT OF TAXATION, Tax including State Homestead, SPECIAL TAXES, TOTAL TAXES, PAID, WHEN PAID, Number of Receipt, March Settlement 1956, June Settlement 1956, November Settlement 1956, Collections to First Monday in January 1957, Delinquent on First Monday in January 1957, Total Delinquent Tax and Penalty, REMARKS.

Miller's Point

Edna Woodland

Delicias Beach

Sub. Horseshoe Beach

and Tully Bay

Assessment Roll and Tax List of Real Property in the Town of Powers, Cass County, Minnesota, for Taxes for the Year 1955.

Form 300 (35) - 1954

Indicate Type of Property: R-Residential, C-Commercial, I-Industrial, U-Utility, F-Farm

Table with columns: IN WHOSE NAME ASSESSED, TO WHOM TRANSFERRED, DESCRIPTION OF PROPERTY, TRUE AND FULL VALUATIONS, ASSESSED VALUATIONS, FINAL EQUALIZED VALUE.

Wm E. & Ruth M. De Jones
Mapson Vanerpe & Co. Inc. Minneapolis, Minnesota
71400 of 829 1/2 W. 343
of 71404 of 824

Cass County, Minnesota, for Taxes for the Year 1955.

Table with columns: SOLD FOR TAXES, VALUATIONS BY SCHOOL DISTRICTS AS EQUALIZED BY DEPARTMENT OF TAXATION, SPECIAL TAXES, TOTAL TAXES, PAID, WHEN PAID, Number of Receipt, March Settlement 1956, June Settlement 1956, November Settlement 1956, Collections to First Monday in January 1957, Delinquent on First Monday in January 1957, Total Delinquent Tax and Penalty, REMARKS.

PAID IN FULL AUG 1 1956
PAID IN FULL AUG 1 1956

Point
woodland
DeSloanes Beach
Shoreline Beach
Inroy Bay

Assessment Roll and Tax List of Real Property in the Town of Powers, Cass County, Minnesota, for Taxes for the Year 1955.

Table with columns: IN WHOSE NAME ASSESSED, TO WHOM TRANSFERRED, DESCRIPTION OF PROPERTY, TRUE AND FULL VALUATIONS, ASSESSED VALUATIONS, and FINAL EQUALIZED VALUE. Includes handwritten entries for various property owners like Elmer & Ada Datz.

Cass County, Minnesota, for Taxes for the Year 1955.

Table with columns: SOLD FOR TAXES, VALUATIONS BY SCHOOL DISTRICTS AS EQUALIZED BY DEPARTMENT OF TAXATION, Tax Including State Homestead, State Tax on Non-Homestead, SPECIAL TAXES, TOTAL TAXES, PAID, WHEN PAID, Number of Receipt, March Settlement 1956, June Settlement 1956, November Settlement 1956, Collections to First Monday in January 1957, Delinquent on First Monday in January 1957, Total Delinquent Tax and Penalty, and REMARKS. Includes handwritten entries for various property owners.

Assessment Roll and Tax List of Real Property in the Town of Powers

Indicate Type of Property: R-Residential, C-Commercial, I-Industrial, U-Utility, F-Farm

Cass County, Minnesota, for Taxes for the Year 1955.

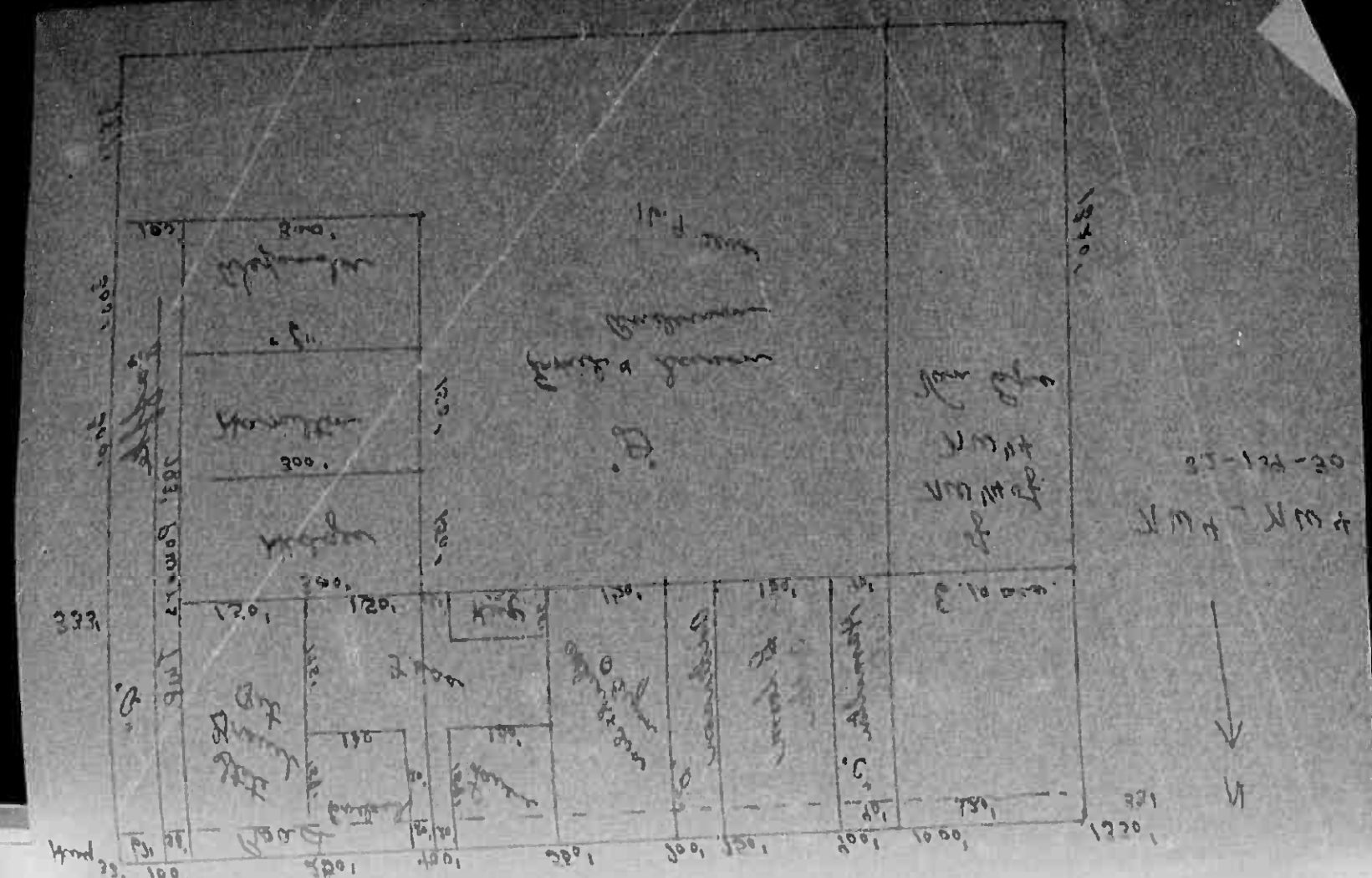


Table with columns: IN WHOSE NAME ASSESSED, TO WHOM TRANSFERRED, SUBDIVISION, TRUE AND FULL VALUATIONS (LAND, BUILDINGS, MACHINERY, TOTAL), ASSESSED VALUATIONS (RURAL, ALL OTHER, MACHINERY), VALUATIONS BY SCHOOL DISTRICTS, TAXES, PAID, WHEN PAID, Number of Receipts, March Settlement, June Settlement, November Settlement, Collections to First Monday in January, Delinquent on First Monday in January, Total Delinquent Tax and Penalty, REMARKS.

Assessment Roll and Tax List of Real Property in the Town of Powers, of Powers, Minnesota. Indicate Type of Property: R-Residential, C-Commercial, I-Industrial U-Utility, F-Farm

Cass County, Minnesota, for Taxes for the Year 1955.

Table with columns: IN WHOSE NAME ASSESSED, TO WHOM TRANSFERRED, SUBDIVISION, TRUE AND FULL VALUATIONS, ASSESSED VALUATIONS, VALUATIONS BY SCHOOL DISTRICTS AS EQUALIZED BY DEPARTMENT OF TAXATION, TAXES, PAID, WHEN PAID, Number of Receipt, March Settlement, June Settlement, November Settlement, Collections to First Monday in January, Delinquent on First Monday in January, Total Delinquent Tax and Penalty, REMARKS.

Assessment Roll and Tax List of Real Property in the Town of Powers

*Indicate Type of Property: R-Residential, C-Commercial, I-Industrial, U-Utility, F-Farm

IN WHOSE NAME ASSESSED	TO WHOM TRANSFERRED	DESCRIPTION OF PROPERTY				TRUE AND FULL VALUATIONS										FINAL EQUALIZED VALUE	
		Subdivision	Sec. or Lot	Town or Block	Range	Number of Acres of Land	LAND	BUILDINGS	MACHINERY	TOTAL	RURAL		ALL OTHER		MACHINERY		TOTAL
		El Suero				Acres	Dollars	Dollars	Dollars	Dollars	Homestead 20%	Over \$4,000 and Non-Homestead 33 1/3%	Homestead 25%	Over \$4,000 and Non-Homestead 40%	Permanently Attached to Real Estate 33 1/3%	Dollars	Dollars
Roy & Gertrude Curney		Sub 5-sec. 15-13-30	7			30											
Paul S. Britz			8														
Nicholas & Norman			4														
Paul S. Britz			5														
Urban Buchheit			7														
Paul S. Britz			8														
Bernard E. Deslauriers			9														
Emma R. Sullivan			10														
Sacred Heart Girl's Foundation			11														
Paul S. Britz			12														
Jose & Lena Escamilla			13														
John & Lena S. Escamilla			15														
Paul S. Britz			16														
			17														
			18														
			19														
			20														

Cass County, Minnesota, for Taxes for the Year 1955.

SOLD FOR TAXES	VALUATIONS BY SCHOOL DISTRICTS AS EQUALIZED BY DEPARTMENT OF TAXATION						Tax Including State Homestead	State Tax on Non-Homestead	SPECIAL TAXES	TOTAL TAXES	PAID	WHEN PAID	Number of Receipt	March Settlement 1956	June Settlement 1956	Penalty	November Settlement 1956	Penalty	Collections to First Monday in January 1957	Penalty	Delinquent on First Monday in January 1957	Total Delinquent Tax and Penalty	REMARKS
	District No.	District No.	District No.	District No.	District No.	District No.																	
1							248	06		254	1	2nd Half Paid OCT 31 1955	15119										
2							248	06		254	2	1st Half Paid MAY 31 1956	12076		1127								
3							248	06		254	3	PAID IN FULL MAY 31 1956	12172		254								
4							248	06		254	4	PAID IN FULL MAY 31 1956	0411		254								
5							248	06		254	5	PAID IN FULL MAY 31 1956			254								
6							248	06		254	6	PAID IN FULL MAY 31 1956	12172		254								
7							248	06		254	7	PAID IN FULL OCT 1 1956	14092							254			
8							248	06		254	8	PAID IN FULL MAY 31 1956	12172		1254								
9							248	06		254	9	PAID IN FULL MAY 31 1956	12171		254								
10							5374	112		5486	10	PAID IN FULL MAY 31 1956	12173		5486								
11							2080	44		2124	11	PAID IN FULL MAY 31 1956	2170		2124								
12							1668	34		1694	12	PAID IN FULL MAY 31 1956	12172		1694								
13							422	08		430	13	PAID IN FULL MAY 31 1956			430								
14							3392	70		3462	14	PAID IN FULL MAY 31 1956	12174		3462								
15							422	08		430	15	PAID IN FULL MAY 31 1956			430								
16							248	04		252	16	PAID IN FULL MAY 31 1956											
17							248	04		252	17	PAID IN FULL MAY 31 1956	12176		1008								
18							248	04		252	18	PAID IN FULL MAY 31 1956											
19							248	04		252	19	PAID IN FULL MAY 31 1956											
20							669			16574	20				16920		16539			324			

Miller's Point, Woodland, Des Moines Beach, Horseshoe Beach, Bay

Hilme Beach, Boho Hill, Hasland's Lakeshore on Rainy Lake, Gillespies Sub-Division, Idaho Shore, Saboron Hill's

Assessment Roll and Tax List of Real Property in the Town of Powers, Minnesota

Cass County, Minnesota, for Taxes for the Year 1955.

*Indicate Type of Property: R-Residential, C-Commercial, I-Industrial, U-Utility, F-Farm

Table with columns: N WHOSE NAME ASSESSED, TO WHOM TRANSFERRED, SUBDIVISION, TRUTH AND FULL VALUATIONS, ASSESSED VALUATIONS, VALUATIONS BY SCHOOL DISTRICTS AS EQUALIZED BY DEPARTMENT OF TAXATION, TAXES, PAID, WHEN PAID, etc.

Vertical text on the left margin: Wildmere Beach, Woodland, Des Moines Beach, Horseshoe Beach, Bay

Vertical text on the right margin: Echo Hill, Headland's Lake, On Fairy Lake, Gillespies Sub-Division, Rido Shore, Sandport Heights

Handwritten summary at the bottom: 404, 10010, 206, 10216, 97 10, 506

