

ASSESSMENT & TAX LIST

Powers

1948

Fred Palmer E 1/2 of Lot 139
2 ac 2 tr of 139 - 30 should be Homestead

Amelia Moorey Lot 2 Sec 3 - 139 - 30
should be homestead

Chas. P. & Marie Benalkin ^{3244 Inman Ave} Long Beach Calif.

600 a. Section 3, starting at N.W. corner
for 10 E. on N. Line 500 ft. S. 160 ft then
due W. 150 ft. to shore of Peheral Lake.
should not be homestead.

Paul Steh ^{Section} 24 - ^{NE of N.E.} Buildings too low
suggest \$500 as valuation

Lydas Toplin - Section 4 - S.W. of N.E.

Valued too high at \$625 - to \$475

Geo. Kahl - S.E. of N.W. Sec. 5.

Raised from \$150 to \$250.

Lee W. & Evelyn J. Hilderbrand N.E. of Sec 29
from \$355 to \$455 (Buildings)

Caron Jaffke NW SW Sec. 29 from \$420 to \$620
Buildings

A. H & Marnie Johnson S.E. of NW.
Sect. 29

Raised from \$1.85 to \$2.85

Paul & Luella Miller

N.W. of S.E. Sect 29

(Billie Jean Hance) Raised from

\$360 to \$425

P. L. Curry N.E. of N.E. Section 30

Raised from \$425 to \$500

SUMMARY OF TAX COLLECTION

Original Levy	\$10,553.76
Additions	\$ 6276
Cancellations	\$ 142.46
Abatements	\$ 123.40
	<u>\$10,350.36</u>
COLLECTIONS	
March Settlement	\$1,575.80
June Settlement	\$4,682.86
November Settlement	\$2,789.58
January Settlement	\$ 207.06
	<u>53.36</u>
Over Collected	\$ 53.36
Under Collected	\$
Delinquent	\$1146.42
Total	<u>\$10,350.36</u>

Miller's Point
 Woodland
 Des Moines Beach
 Korrashee Beach
 Luray Bay
 El Sueno

REAL

Treasurer's Office, Cass County, Minnesota

RECEIVED this, the first Monday (being the 3rd day) of January, A. D. 1949, of L. G. Peterson, Auditor of said County, Minnesota, the Tax List of all Taxable Real and Personal Property in the Town of Power in said County for the year A. D. 1948, as specified above and amounting to _____ Dollars

Paul D. Jewell
County Treasurer.

Office of County Treasurer, Cass County, Minnesota

To L. G. Peterson, County Auditor:
Sir: I herewith return to you the Tax List for the Town of Power in said County for the year 1948, heretofore received from you. I certify that I have compared the same with the duplicate receipts in your office, and have written opposite the amount of each tax so received the words "First Quarter Paid", "Second Quarter Paid", "Third Quarter Paid" or "Paid in full" as the case may be, and the number of my receipt given in discharge of said tax, and each tract or lot of real property against which the taxes remain unpaid is delinquent for said year.

Yours respectfully,
Paul D. Jewell
County Treasurer.

Auditor's Office, Cass County, Minnesota

I, _____ Auditor of said County, and State of Minnesota, do hereby certify that the following is a correct list of the Taxes levied on the Real and Personal Property in the _____ of _____ for the year 1948.

WITNESS my hand and official seal, the _____ day of _____ 1949.
(SEAL) _____ County Auditor.

Auditor's Office, Cass County, Minnesota

I hereby certify that on the first Monday in January 1950, I received of _____ 194 _____ County Treasurer, the Tax List of the _____ of _____ in said County for the year 1948; that I have compared the said list with the Statements received for by said Treasurer, which are on file in my office, and that each tract or lot of real property therein against which the taxes, or any part thereof, remains unpaid are delinquent for said year.

(SEAL) _____ County Auditor.

Willard's Point
Reedland
Des Moines Beach
Horseshoe Beach
Laroy Bay
El Sueno

TABULAR SCHEDULE OF VALUATIONS,
LEVIED IN THE Township OF Powers

RATES AND TAXES
COUNTY OF CASS, STATE OF MINNESOTA

School District No.	VALUATION BY SCHOOL DISTRICTS				RATE OF STATE TAXES		RATE OF COUNTY TAXES										RATE OF TOWN TAXES										RATE OF SCHOOL TAXES	
	Agric- ultural Lands	Non-Agric- ultural Lands	Personal Property	Total Value of all Property except Money and Credits	Total Rate of State Tax	Rev.	R. & B.	Wel- fare	Bonds and Int.	Skp.	Total Rate of County Tax	Rev.	R. & B.	Drag Tax	State Loan	Tel.	Total Rate of Town Tax	Local	Spe- cial	State Loan	Defi- ciency	Tui- tion	Trans- porta- tion	Brd	C.O.	Total Rate of Sch'l Tax	Total Rate of all Taxes	
Un	Dollars 33910	Dollars 11907	Dollars 6329	Dollars 52146	H. 291 N. H. 386 6.77	23.4	7.2	48.5	7.9	6.5	93.5	4.8	4.8	1.	5.	15.6	1.	15.	40.	40.	1.8	14.7	10.	10.	82.5 97.5	194.51 209.51	3391 1823	50870 54713
Assessed Value Homestead	6785	All Other	Personal Property	Total 16785																								
Non-Homestead Total	26924	2108	6329	35361																								
Total	43709	2108	6329	52146																								

LOCAL 1 MILL AND SPECIAL SCHOOL TAXES BY DISTRICTS										ALL OTHER TAXES	
Local 1 Mill	Special	State Loan	Def. Incap.	Brd	C.O.	Total School Taxes	FUNDS	Rate	Amounts		
3391	50870	135650	6104	49853	33910	279778	State-Non-Homestead		15174		
1823	54713	72949	3282	26807	18236	177810	State-Homestead		13686		
5214	105583	208599	9386	76660	52146	457588	County Revenue,		122032		
							County Road and Bridge,		37550		
							County Welfare,		252918		
							Bonds and Interest		41200		
							Skp		33900		
							Town Revenue,		25030		
							Town Road and Bridge,		25030		
							Town Drag,		5215		
							Town State Loan,		26073		
							Tel.				
							School Local 1 Mill,		5214		
							School Special,		105583		
							School State Loan,		208599		
							Deficiency				
							Tuition		9386		
							Transportation		76660		
							Brd		52146		
							C.O.		457588		

Total Number of Acres 13,115.05
 State of Minnesota,
 COUNTY OF CASS
 Auditor of said County and State aforesaid, do hereby certify that the foregoing is a true and correct Schedule, showing the valuation of all the taxable property, in the July of 1948, in said County, the several rates of Taxation and Totals of the several Tax Funds levied thereon for the year A. D. 1948.
 Witness my hand and official seal, this 14 day of June A. D. 1948
L. C. Brown County Auditor.

Total Taxes Real Esta: 9,203.60
 Pers. Prop. 1,350.36
 Total 10,553.96

SEAL

REAL

Willor's Point Woodland Des Moines Beach Horseshoe Beach Lure Bay El Sueno

COLLECTIONS OF TAXES OF 1944, OF Powers, CASS COUNTY, MINNESOTA

FUNDS	MARCH SETTLEMENT 1944	JUNE SETTLEMENT 1944	NOV. SETTLEMENT 1944	Amount Collected from Nov. 1944 to First Monday in Jan. 1945	REDUCTIONS	Total Reductions and Collected	BALANCE UNCOLLECTED	ADDITIONS	Total Uncollected to First Monday in January, 1945
State—Non-Homestead,	2532	5805	2837	259					
State—Homestead,	2180	6759	4061	245					
County Revenue,	17608	54347	32654	2373					
County Road and Bridge,	5418	16722	10048	730					
County Welfare,	36496	112643	67681	4418					
County Bond and Interest,	5945	18248	11024	801					
Skp	4822	15047	9076	659					
Town Revenue,	3612	11148	6678	487					
Town Road and Bridge,	3612	11148	6678	487					
Town Drag,	702	2323	1375	101					
Town State Loan,	3762	11613	6977	507					
School Local 1 Mill,	753	2323	1395	102					
School Special,	19968	45561	25617	2443					
School State Loan,									
Deficiency	30099	92802	55220	4056					
Tuition									
Transportation	1355	4187	2512	183					
B & I	11062	34141	20513	1491					
C. O.	7525	23225	13755	1014					
	157590	468286	278958	20906					

	SCHOOL DISTRICT NO.	LOCAL 1 MILL	SPECIAL	STATE LOAN	Imp.	Reps.	B & I	C. O.	TOTALS
MARCH SETTLEMENT	1-2-20 1-2-20	174 577	2607 17361		313 1042	6952 23447	2555 8507	1738 5787	14389 56423
Totals		753	19968		1355	30099	11062	7525	70762
JUNE SETTLEMENT	2-2-20 2-2-20	1608 715	24113 21448		2894 1287	64305 28597	23632 10509	16076 7149	132628 69705
Totals		2323	45561		4181	92902	34141	23225	202323
NOVEMBER SETTLEMENT	3-2-20 3-2-20	1083 312	16248 9371		1950 562	43327 12473	15922 4591	10832 3123	89362 30452
Totals		1375	25619		2512	55820	20613	13755	117814
NOVEMBER to JANUARY	4-2-20 7-4-20	40 62	597 1846		72 101	1591 2465	585 906	398 616	3283 4006
Totals		102	2443		182	4056	1491	1017	7289
ADDITIONS									
Totals									
REDUCTIONS									
Totals									

Miller's Point
Woodland
Des Moines Beach
Horseshoe Beach
Lure of Bay
El Sumo

Assessment Roll and Tax List of Real Property in the Town of Cowan

Table with columns: IN WHOSE NAME ASSESSED, TO WHOM TRANSFERRED, DESCRIPTION OF PROPERTY, TRUE AND FULL VALUATIONS, ASSESSED VALUATIONS, FINAL EQUALIZED VALUE.

Cass County, Minnesota, for Taxes for the Year 1948.

Table with columns: SOLD FOR TAXES, VALUATIONS BY SCHOOL DISTRICTS AS EQUALIZED BY DEPARTMENT OF TAXATION, TAX INCLUDING STATE HOMESTEAD, SPECIAL TAXES, TOTAL TAXES, PAID, WHEN PAID, Number of Receipt, March Settlement 1949, June Settlement 1949, November Settlement 1949, Collections to First Monday in January 1950, Delinquent on First Monday in January 1950, Total Delinquent Tax and Penalty, REMARKS.

Assessment Roll and Tax List of Real Property in the Town of *Comert*

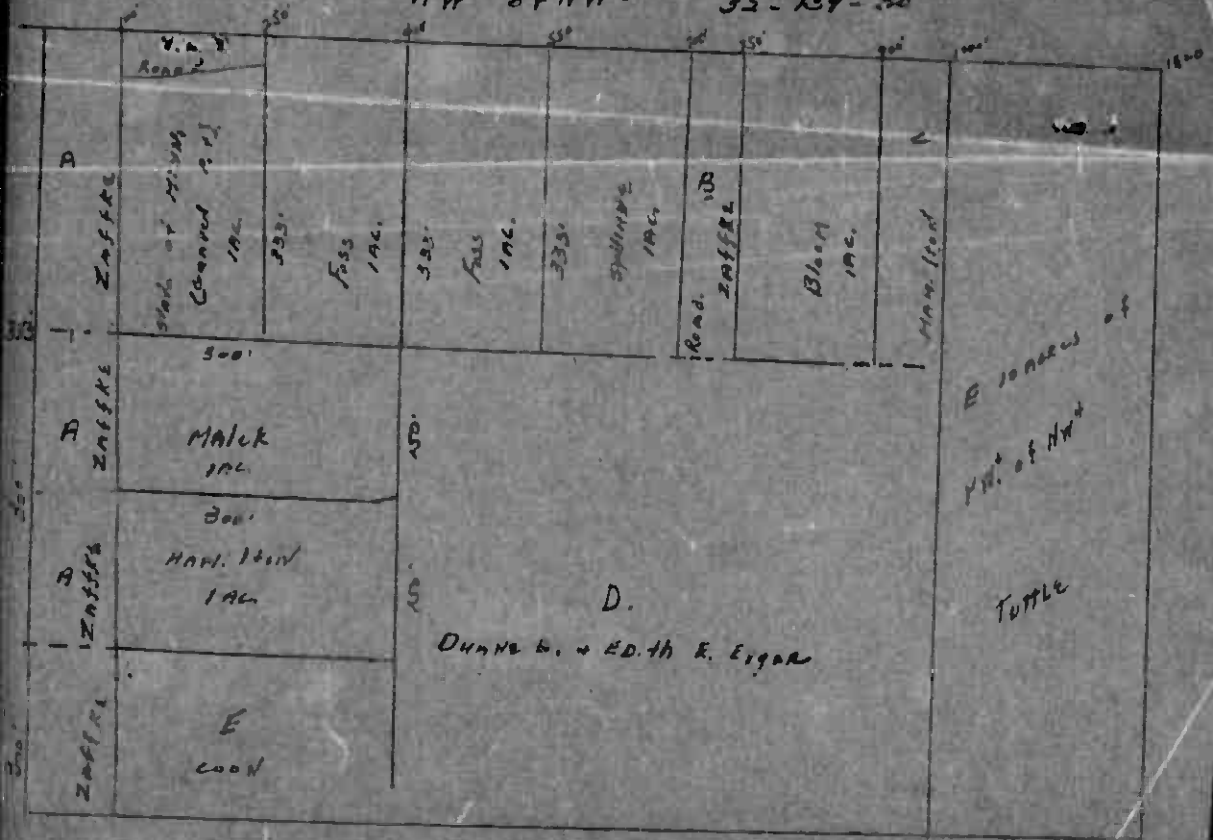
IN WHOSE NAME ASSESSED	TO WHOM TRANSFERRED	DESCRIPTION OF PROPERTY				TRUE AND FULL VALUATIONS										FINAL EQUALIZED VALUE	
		SUBDIVISION	Sec. or Lot	Town or Block	Number of Acres of Land	LAND Exclusive of Structures and Improvements	BUILDINGS and Other Structures	MACHINERY Permanently Attached to Real Estate	TOTAL True and Full Value	RURAL		ALL OTHER		MACHINERY Permanently Attached to Real Estate	TOTAL ASSESSED VALUE		Total Assessed Value as Equalized by the Board of Review
										Acres	100ths	Homestead Up to \$4,000 20%	Over \$4,000 and Non-Homestead 33 1/3%				
<i>Aaron Zaffke</i>		NE 1/4 of NE 1/4	20	129	30	40			370					370	74	74	
		NW 1/4 of NE 1/4				40			370					370	74	74	
		SW 1/4 of NE 1/4				40			370					370	74	74	
<i>Lewis H. Jew, Jr. & Kathryn E. Jew</i>		SE 1/4 of NE 1/4				40			275					275	55	55	
<i>Joe & May Johnson</i>		NE 1/4 of NW 1/4				40			370	415	Sup. B. City	785	157	885	177	157	
		NW 1/4 of NW 1/4				40			230			230	46	230	46	46	
<i>Jean Mc Dowell</i>		SW 1/4 of NW 1/4				40			150			150	30	150	30	30	
<i>Aaron Zaffke</i>		SE 1/4 of NW 1/4				40			275			275	55	275	55	55	
		NE 1/4 of SW 1/4				40			275			275	55	275	55	55	
<i>C. L. Curry</i>		NW 1/4 of SW 1/4				15			135			135	27	135	27	27	
		SW 1/4 of SW 1/4				40			370			370	74	370	74	74	
<i>Aaron Zaffke</i>		SE 1/4 of SW 1/4				40			370	1600	Sup. B. City	1990	398	1790	358	398	
<i>Jean Mc Dowell</i>		NW 1/4 of SW 1/4 less S. 25' rd.				25			200			200	40	200	40	40	
<i>Lewis H. Jew, Jr. & Kathryn E. Jew</i>		NE 1/4 of SE 1/4				40			370			370	74	370	74	74	
<i>Aaron Zaffke</i>		NW 1/4 of SE 1/4				40			370			370	74	370	74	74	
		SW 1/4 of SE 1/4				40			370			370	74	370	74	74	
<i>Lewis H. Jew, Jr. & Kathryn E. Jew</i>		SE 1/4 of SE 1/4				40			370	120		790	158	790	158	158	
						640			5260	2435		7695	1539	7695	1539	1539	

Cass County, Minnesota, for Taxes for the Year 1948.

SOLD FOR TAXES	VALUATIONS BY SCHOOL DISTRICTS AS EQUALIZED BY DEPARTMENT OF TAXATION						Tax Including State Homestead	State Tax on Non-Homestead	SPECIAL TAXES	TOTAL TAXES	PAID	WHEN PAID	Number of Receipt	March Settlement 1949	June Settlement 1949	Penalty	November Settlement 1949	Penalty	Collections to First Monday in January 1950	Penalty	Delinquent on First Monday in January 1950	Total Delinquent Tax and Penalty	REMARKS
	District No.	District No.	District No.	District No.	District No.	District No.																	
	Rate	Rate	Rate	Rate	Rate	Rate																	
	H 74						1440			1440	1	PAID IN FULL MAY 3 1949	4955		1440								
	H 74						1440			1440	2	PAID IN FULL MAY 3 1949	4955		1440								
	H 74						1440			1440	3	PAID IN FULL MAY 3 1949	4955		1440								
	H 55						1070			1070	4	PAID IN FULL FEB 4 1949	932	1070									
	H 157						3054			3054	6	PAID IN FULL JUN 8 1949	7032		3054		55						
	H 46						894			894	7	PAID IN FULL JUN 8 1949	7032		894		10						
	H 30						584			584	8	2nd Half Paid MAY 3 1 1949	9801		272								
	H 55						1070			1070	9	PAID IN FULL MAY 3 1949	4955		1070								
	H 55						1070			1070	11	PAID IN FULL MAY 3 1 1949	4955		1070								
	H 27						526			526	12	1st Half Paid MAY 3 1 1949	6763		263								
	H 74						1440			1440	13	2nd Half Paid OCT 3 1 1949	14400				263						
	H 398						7742			7742	14	1st Half Paid MAY 3 1 1949	6763		720								
	H 40						778			778	15	2nd Half Paid OCT 1 1 1949	12766		387								
	H 74						1440			1440	16	PAID IN FULL FEB 4 1949	932	1440									
	H 74						1440			1440	17	PAID IN FULL	4955		1440								
	H 74						1440			1440	18	PAID IN FULL	4955		1440								
	H 158						3074			3074	19	PAID IN FULL FEB 4 1949	932	3074									
	H 1539						29972			29972	20			57121	18746		5612						

NW 1/4 of NW 1/4

32-139-30



V.A. Road

Stake of Mining Claim 192

250

Foss 192

250

Foss 192

250

SPRING 192

Road ZAFFRE

Block 192

Man. Road

500

MALIK 192

150

200

HAND. 192

150

D.

DUNN B. & EDITH K. EIGAN

E

COON

E 1/2 of NW 1/4

TUTTLE

100

33

500

250

