

ASSESSMENT & TAX LIST - 1962
Ponto Lake

COLLECTIONS OF TAXES OF 196... OF *Porto Lina* CASS COUNTY, MINNESOTA

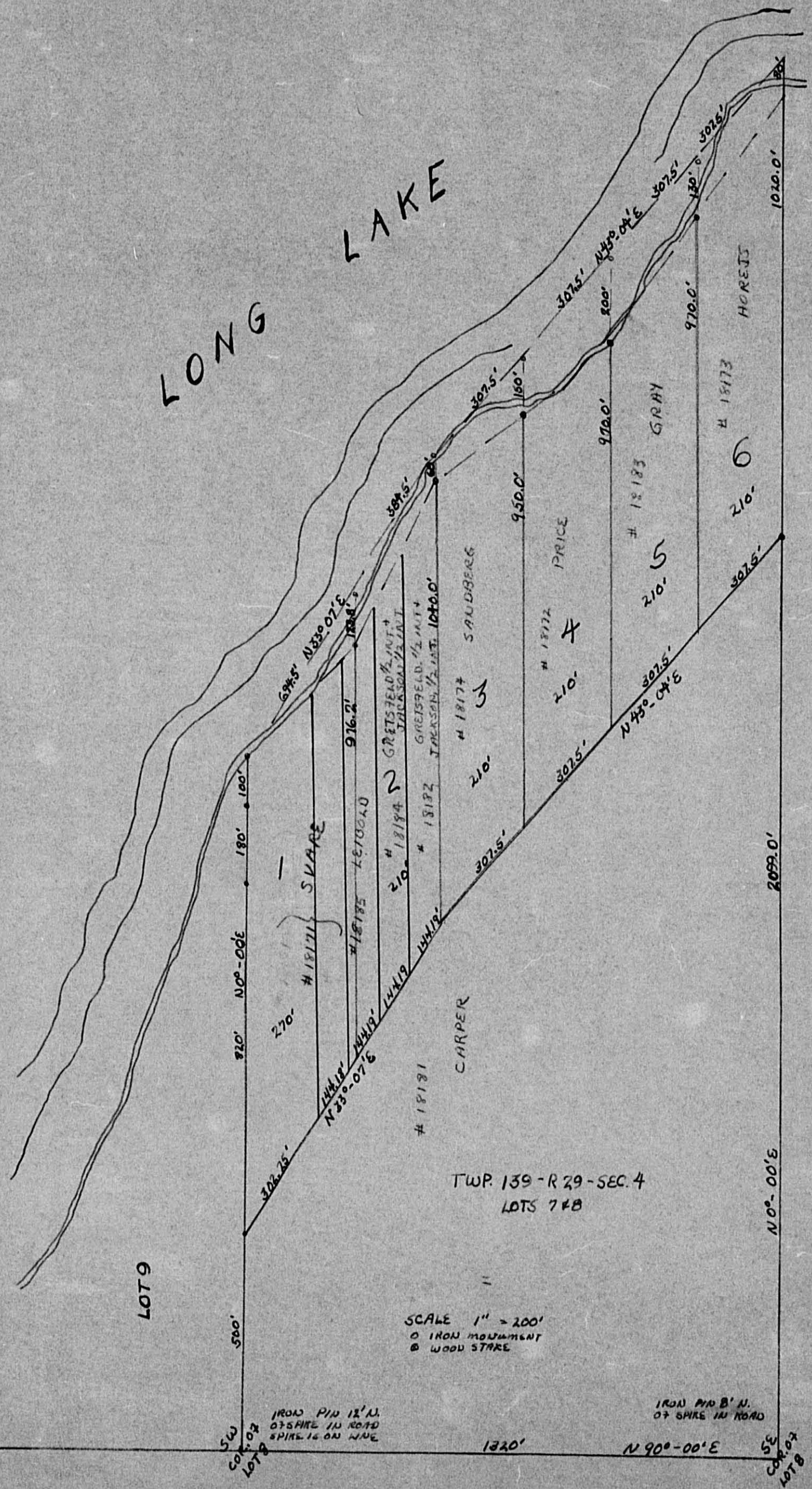
FUNDS	MARCH SETTLEMENT 19.63	JUNE SETTLEMENT 19.63	NOV. SETTLEMENT 19.62	Amount Collected from Nov. 19.62 to First Monday in Jan. 19.63	REDUCTIONS	Total Reductions and Collected	BALANCE UNCOLLECTED	ADDITIONS	Total Uncollected to First Monday in January, 19...
State--Non-Homestead,	69 91	386 29	150 03	1029					
State--Homestead,	76 42	499 38	221 63	1000					
County Revenue,	484 75	1942 43	862 39	3864					
County Road and Bridge,	302 31	1211 37	538 44	2410					
County Welfare,	751 83	3012 67	1339 10	5993					
County Bond and Interest,	206 63	827 97	368 02	1648					
<i>City of</i>	79 96	320 41	142 42	638					
<i>P.R.A.</i>	13 75	55 12	24 50	110					
<i>Co. Murco</i>	30 23	121 14	53 84	242					
<i>B. N. Ret.</i>	72 25	289 52	128 69	576					
Town Revenue,	136 04	545 12	242 30	1084					
Town Road and Bridge,									
Town State Loan,									
<i>Fin</i>	75 58	302 83	134 61	602					
School Local 1 Mill,									
School Special,	637 20	2173 53	946 43	3574					
School State Loan,									
Deficiency	477 34	1912 75	850 19	3804					
Tuition									
Transportation									
<i>c.o.</i>	444 69	1781 92	772 05	3544					
<i>P.R.A.</i>	504 9	202 30	89 92	403					
<i>civ. eng.</i>	5 59	22 40	9 96	45					
<i>ag. bus.</i>	7 56	30 28	13 45	61					
<i>Transp.</i>	14 51	58 15	25 84	116					
	3937 05	15696 58	6934 81	30763					

	School District No.	LOCAL 1 MILL	SPECIAL	STATE LOAN	Deficiency	C O	P.R.A.	TOTALS
MARCH SETTLEMENT	114 a		118 56		149 76	139 52	15 84	423 68
	114 na		518 64		327 58	305 17	34 65	1186 04
	Totals		637 20		477 34	444 69	50 49	1609 72
JUNE SETTLEMENT	114 a		854 89		1079 90	1006 03	114 22	3055 04
	114 na		1318 64		832 82	775 89	88 08	3015 46
	Totals		2173 53		1912 75	1781 92	202 30	6070 50
NOVEMBER SETTLEMENT	114 a		399 67		504 86	470 33	50 40	1428 26
	114 na		546 76		345 33	321 72	36 52	1250 33
	Totals		946 43		850 19	792 05	89 92	2678 59
NOVEMBER to JANUARY	114 a		243 0		306 9	285 9	32 5	868 3
	114 na		116 4		73 5	68 5	7 8	266 2
	Totals		359 4		380 4	354 4	40 3	1134 5
ADDITIONS								
REDUCTIONS								

Real Estate
 Sh. Camp
 Blanche
 Kimme
 Point
 Shores
 East Shore
 Plat. of
 Ada Fine
 Beach
 Porto North
 Snodgrass
 Addition

LONG LAKE

LOT 9



TWP. 139-R29-SEC. 4
LOTS 748

SCALE 1" = 200'
 ○ IRON MONUMENT
 ● WOOD STAKE

IRON PIN 12' N.
 OF SPIRE IN ROAD
 SPIRE IS ON WAVE

IRON PIN B' N.
 OF SPIRE IN ROAD

SW
 CORNER
 LOT 9

SE
 CORNER
 LOT 8

1320'

3,000.00' N

2099.0'

3,000.00'

1010.0'

HORETS

GRAY

SAUDBERG

CARPER

PRICE

GRETSFELD 1/2 INT.
 JACKSON 1/2 INT.

GRETSFELD 1/2 INT.
 JACKSON 1/2 INT.

GRETSFELD 1/2 INT.
 JACKSON 1/2 INT.

GRETSFELD 1/2 INT.
 JACKSON 1/2 INT.

GRETSFELD 1/2 INT.
 JACKSON 1/2 INT.

GRETSFELD 1/2 INT.
 JACKSON 1/2 INT.

GRETSFELD 1/2 INT.
 JACKSON 1/2 INT.

GRETSFELD 1/2 INT.
 JACKSON 1/2 INT.

694.5' N33°07'E

1884.5'

916.2'

210.0'

210.0'

210.0'

210.0'

210.0'

302.5'

302.5'

302.5'

302.5'

302.5'

302.5'

302.5'

302.5'

302.5'

302.5'

302.5'

302.5'

302.5'

302.5'

302.5'

302.5'

302.5'

302.5'

302.5'

302.5'

302.5'

302.5'

302.5'

302.5'

302.5'

302.5'

302.5'

302.5'

302.5'

302.5'

302.5'

302.5'

302.5'

302.5'

302.5'

302.5'

302.5'

302.5'

302.5'

302.5'

302.5'

302.5'

302.5'

302.5'

302.5'

302.5'

302.5'

302.5'

302.5'

302.5'

302.5'

302.5'

302.5'

302.5'

302.5'

302.5'

302.5'

302.5'

302.5'

302.5'

302.5'

302.5'

302.5'

302.5'

302.5'

302.5'

302.5'

302.5'

302.5'

302.5'

302.5'

302.5'

302.5'

302.5'

302.5'

302.5'

302.5'

302.5'

302.5'

302.5'

302.5'

302.5'

302.5'

302.5'

302.5'

302.5'

302.5'

302.5'

302.5'

302.5'

302.5'

302.5'

302.5'

302.5'

302.5'

302.5'

302.5'

302.5'

302.5'

302.5'

302.5'

302.5'

302.5'

302.5'

302.5'

302.5'

302.5'

302.5'

302.5'

302.5'

302.5'

302.5'

302.5'

302.5'

302.5'

302.5'

302.5'

302.5'

302.5'

302.5'

302.5'

302.5'

302.5'

302.5'

302.5'

302.5'

302.5'

302.5'

Assessment Roll and Tax List of Real Property in the Town of Pont Lake

Form 5C MILLER-DAVIS CO., MINNEAPOLIS

* Indicate Type of Property: R-Residential, C-Commercial, I-Industrial, U-Utility, F-Farm, L-Lakeshore, T-Timber, M-Mineral

Table with columns: IN WHOSE NAME ASSESSED, DESCRIPTION OF PROPERTY, TRUE AND FULL VALUATIONS, ASSESSED VALUATIONS, and FINAL EQUALIZED VALUE. Includes property details for Hillis B. and Nancy Combs, Charles L. and Laura K. Snyder, etc.

Cass County, Minnesota, for Taxes for the Year 1962.

Table with columns: VALUATIONS BY SCHOOL DISTRICTS AS EQUALIZED BY DEPARTMENT OF TAXATION, TAX INCLUDING STATE HOMESTEAD, SPECIAL TAXES, TOTAL TAXES, PAID, WHEN PAID, and REMARKS. Includes handwritten notes and tax amounts.

Assessment Roll and Tax List of Real Property in the Town of Ponto Lake

* Indicate Type of Property: R-Residential, C-Commercial, I-Industrial, U-Utility, F-Farm, L-Lakeshore, T-Timber, M-Mineral

Form 50 MILLER-DAVIS CO., MINNEAPOLIS

Table with columns: IN WHOSE NAME ASSESSED, DESCRIPTION OF PROPERTY, TRUE AND FULL VALUATIONS, ASSESSED VALUATIONS, FINAL EQUALIZED VALUE. Includes handwritten entries for Stanley H. and Norma L. Duff, Martin O. and Eunice L. Holte, etc.

(Continued on next page)

Cass County, Minnesota, for Taxes for the Year 1962.

Table with columns: VALUATIONS BY SCHOOL DISTRICTS AS EQUALIZED BY DEPARTMENT OF TAXATION, TAXES, PAID, WHEN PAID, Number of Receipt, March Settlement, June Settlement, November Settlement, Collections to First Monday in January 1964, Delinquent on First Monday in January 1964, Total Delinquent Tax and Penalty, REMARKS. Includes handwritten entries for Stanley H. and Norma L. Duff, Martin O. and Eunice L. Holte, etc.

Assessment Roll and Tax List of Real Property in the Town of Ponto Lake

Form 50 MILLER-DAVIS CO., MINNEAPOLIS

* Indicate Type of Property: R-Residential, C-Commercial, I-Industrial, U-Utility, F-Farm, L-Lakeshore, T-Timber, M-Mineral

Cass County, Minnesota, for Taxes for the Year 1962.

IN WHOSE NAME ASSESSED	DESCRIPTION OF PROPERTY				No. School District	Indicate Home-stead Yes or No	Agricultural Yes or No	Indicate Type of Property	TRUE AND FULL VALUATIONS				ASSESSED VALUATIONS							FINAL EQUALIZED VALUE		
	SUBDIVISION	Sec. or Lot	Town or Block	Number of Acres of Land					LAND Exclusive of Structures and Improvements	BUILDINGS and Other Structures	MACHINERY Permanently Attached to Real Estate	TOTAL True and Full Value	RURAL		ALL OTHER			MACHINERY Permanently Attached to Real Estate	Seasonal and Recreational Cabins		TOTAL ASSESSED VALUE	Total Assessed Value as Equalized by the Board of Review
													Homestead Up to \$4,000 20%	Over \$4,000 and Non-Homestead 33 1/3%	Timber Land Class 3e 20%	Homestead Up to \$4,000 25%	Over \$4,000 and Non-Homestead 40%					
E. J. Dunlap, et al	1	GOVT LOT 1, less plat "Kinnic Camp"	14 139 29	19 50	114	No	Agri	T	238			238					79					
	2	NW 1/4 of NE 1/4							216			216					72					
Roy F. and Ada M. Saxton	3	SW 1/4 of NE 1/4, less N 400' of E. 488'		35 52		Agri	F		253			253	51				51					
" " "	4	SE 1/4 of NE 1/4, less 2 acs less sold		38		Agri	F		230			230	46				46					
Roy and Ada Saxton	5	2 acs. of E 1/4 of NE 1/4		2		No	C		50	320	352-578	672	81	12	85	109	166	151				
Otto and Olga Zlab	6	NE 1/4 of NW 1/4		40		No	F		274			274	91				91					
" " " "	7	NW 1/4 of NW 1/4		40		No	F		194	143		337					112					
" " " "	8	SW 1/4 of NW 1/4		40		No	F		176	130		306					102					
" " " "	9	SE 1/4 of NW 1/4		40		No	F		241			219					81					
Jacob H. and Helen Lullgraf	10	N 400' of E. 488' of SW 1/4 of NE 1/4		4 48		Agri	R		208	1220		189	142				69					
Mike Smith	11	NE 1/4 of SW 1/4		40		Agri	F		182	745		157					188	287				
" " "	12	NW 1/4 of SW 1/4		40		Agri	F		110			855					171					
" " "	13	SW 1/4 of SW 1/4		40		Agri	F		258			235					52					
" " "	14	SE 1/4 of SW 1/4		40		Agri	F		235			330					47					
" " "	15			40		Agri	F		363			330					73					
" " "	16	NE 1/4 of SE 1/4		40		Agri	T		374			374					75					
" " "	17	NW 1/4 of SE 1/4		40		Agri	F		340			340					68					
" " "	18	SW 1/4 of SE 1/4		40		No	C		418			380					84					
" " "	19	SE 1/4 of SE 1/4		40		Agri	T		380			380					76					
Maggie Smith	20			40		Agri	T		214			214					43					
" " "	17			40		Agri	F		195			195					39					
" " "	18			40		Agri	F		374			374					75					
" " "	19			40		No	C		340	1020	1122	2514	43				73	109				
" " "	20			40		No	C		336	198	218-327	1676	291	43			364					
				40		Agri	T		305			305					73					
				40		Agri	T		209			209					42					
				40		Agri	T		190			190					38					
				579 50					3979	2644		4223	1003				1536					
									4377	2909		7286	1104				1694					
									4634	4292		8926	1383				1678					

(Continued on next page)

SOLD FOR TAXES	VALUATIONS BY SCHOOL DISTRICTS AS EQUALIZED BY DEPARTMENT OF TAXATION						Tax Including State Homestead	State Tax on Non-Homestead	SPECIAL TAXES	SPECIAL TAXES	TOTAL TAXES	PAID	WHEN PAID	Number of Receipt	March Settlement 1963	June Settlement 1963	Penalty	November Settlement 1963	Penalty	Collections to First Monday in January 1964	Penalty	Delinquent on First Monday in January 1964	Total Delinquent Tax and Penalty	REMARKS
	District No.	District No.	District No.	District No.	District No.	District No.																		
	Rate	Rate	Rate	Rate	Rate	Rate																		
1																								
2																								
3																								
4																								
5																								
6																								
7																								
8																								
9																								
10																								
11																								
12																								
13																								
14																								
15																								
16																								
17																								
18																								
19																								
20																								

State of Minnesota
 Cass County
 Ponto Lake
 Ada Fire
 Shore North
 Shore Addition
 Plat of
 East Shore
 East Shore
 Shore
 Shore
 Shore
 Addition

Assessment Roll and Tax List of Real Property in the Town of Ponts Lake

Form 50 MILLER-DAVIS CO., MINNEAPOLIS

* Indicate Type of Property: R-Residential, C-Commercial, I-Industrial, U-Utility, F-Farm, L-Lakeshore, T-Timber, M-Mineral

Table with columns: IN WHOSE NAME ASSESSED, DESCRIPTION OF PROPERTY, TRUE AND FULL VALUATIONS, ASSESSED VALUATIONS (RURAL, ALL OTHER, MACHINERY, Seasonal and Recreational Cabins), TOTAL ASSESSED VALUE, Total Assessed Value as Equalized by the Board of Review, FINAL EQUALIZED VALUE.

Cass County, Minnesota, for Taxes for the Year 1962.

Table with columns: SOLD FOR TAXES, VALUATIONS BY SCHOOL DISTRICTS AS EQUALIZED BY DEPARTMENT OF TAXATION, Tax Including State Homestead, State Tax on Non-Homestead, SPECIAL TAXES, TOTAL TAXES, PAID, WHEN PAID, Number of Receipt, March Settlement 1963, June Settlement 1963, Penalty, November Settlement 1963, Penalty, Collections to First Monday in January 1964, Penalty, Delinquent on First Monday in January 1964, Total Delinquent Tax and Penalty, REMARKS.

Assessment Roll and Tax List of Real Property in the Town of Ponto Lake of Ponto Lake

Form 50 MILLER-DAVIS CO., MINNEAPOLIS

* Indicate Type of Property: R-Residential, C-Commercial, I-Industrial, U-Utility, F-Farm, L-Lakeshore, T-Timber, M-Mineral

Table with columns: IN WHOSE NAME ASSESSED, SUBDIVISION, No. School District, Indicate Home, Indicate Agr., Indicate Type of Property, TRUE AND FULL VALUATIONS (LAND, BUILDINGS, MACHINERY, TOTAL), ASSESSED VALUATIONS (RURAL, ALL OTHER, MACHINERY, Seasonal and Recreational Cabins, TOTAL ASSESSED VALUE, Total Assessed Value as Equalized by the Board of Review), FINAL EQUALIZED VALUE.

Cass County, Minnesota, for Taxes for the Year 1962.

Table with columns: VALUATIONS BY SCHOOL DISTRICTS AS EQUALIZED BY DEPARTMENT OF TAXATION (District No., District Rate, District No., District Rate, District No., District Rate, District No., District Rate), Tax including State Homestead, State Tax on Non-Homestead, SPECIAL TAXES, TOTAL TAXES, PAID, WHEN PAID (Month, Day, Year), Number of Receipt, March Settlement 1963, June Settlement 1963, November Settlement 1963, Collections to First Monday in January 1964, Delinquent on First Monday in January 1964, Total Delinquent Tax and Penalty, REMARKS.

Assessment Roll and Tax List of Real Property in the Town of Ponts Lake, Cass County, Minnesota, for Taxes for the Year 1962.

Form 50 MILLER-DAVIS CO., MINNEAPOLIS

Table with columns: IN WHOSE NAME ASSESSED, DESCRIPTION OF PROPERTY, TRUE AND FULL VALUATIONS, ASSESSED VALUATIONS, and FINAL EQUALIZED VALUE. Includes entries for Raymond R. and Leona C. Barchus, H. L. and Ana Griffith, and Leona C. Barchus.

Table with columns: VALUATIONS BY SCHOOL DISTRICTS AS EQUALIZED BY DEPARTMENT OF TAXATION, TAX INCLUDING STATE HOMESTEAD, SPECIAL TAXES, PAID, WHEN PAID, and REMARKS. Includes entries for various school districts and tax payment details.

Assessment Roll and Tax List of Real Property in the Town of Pont Lake

Form 50 MILLER-DAVIS CO., MINNEAPOLIS

* Indicate Type of Property: R-Residential, C-Commercial, I-Industrial, U-Utility, F-Farm, L-Lakeshore, T-Timber, M-Mineral

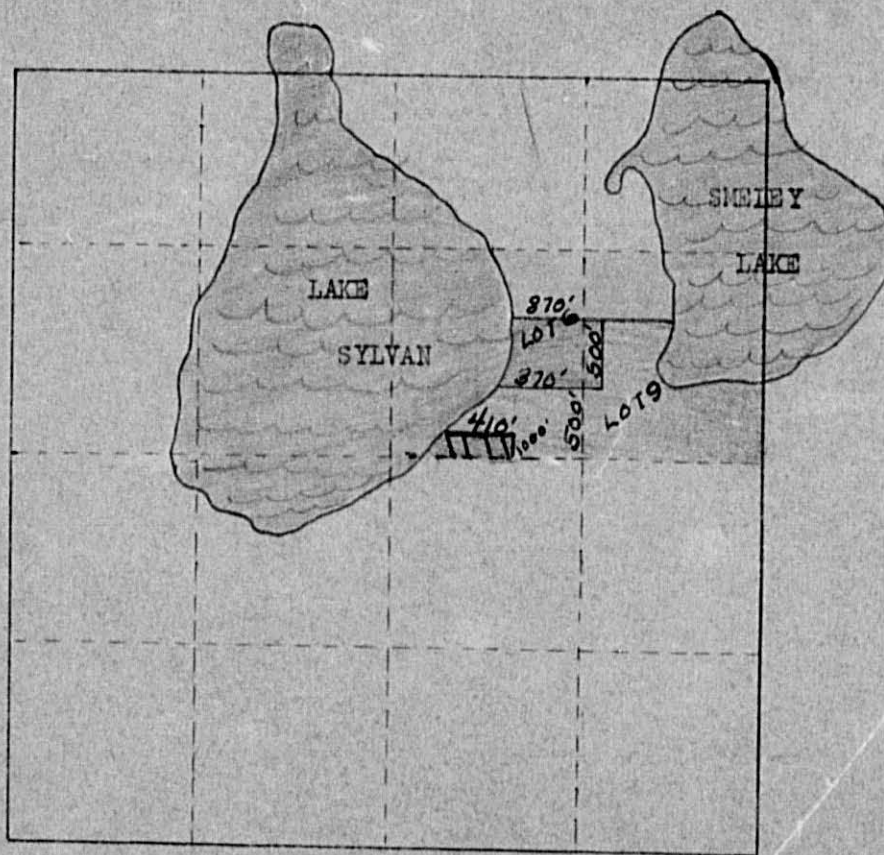
Table with columns: IN WHOSE NAME ASSESSED, DESCRIPTION OF PROPERTY, TRUE AND FULL VALUATIONS, ASSESSED VALUATIONS, FINAL EQUALIZED VALUE.


Cass County, Minnesota, for Taxes for the Year 1962.

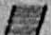
Table with columns: VALUATIONS BY SCHOOL DISTRICTS AS EQUALIZED BY DEPARTMENT OF TAXATION, TAXES, PAID, WHEN PAID, SPECIAL TAXES, TOTAL TAXES, REMARKS.

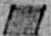
(continued on next page)


Vertical text on the right edge of the page, including 'Shore' and 'Addition'.



 S. 100' x W. 410' in
SW corner of Lot 6
Bert & Aline Parsons

 870' x 500' of Lot 6 & 9; 10 acs.
of S. 1000' of Lots 6 & 9
Nick J. Laub

 S. 1000' of Lots 6 & 9 less 10
acs. & less S. 1000' of W. 410'
G. Freckleton

 Lots 6 & 9 less S. 1000' (or)
N. 320' of Lots 6 & 9
L. E. Minette

Assessment Roll and Tax List of Real Property in the Town of Ponto Lake

* Indicate Type of Property: R-Residential, C-Commercial, I-Industrial, U-Utility, F-Farm, L-Lakeshore, T-Timber, M-Mineral

Form 50 MILLER-DAVIS CO., MINNEAPOLIS

Table with columns: IN WHOSE NAME ASSESSED, DESCRIPTION OF PROPERTY, No. School District, Indicate Homestead Yes or No, Agri. or Forest Yes or No, Indicate Type of Property, ASSESSED VALUATIONS (RURAL, ALL OTHER, MACHINERY, Seasonal and Recreational Cabins, TOTAL ASSESSED VALUE), Total Assessed Value as Equalized by the Board of Review, FINAL EQUALIZED VALUE.

Cass County, Minnesota, for Taxes for the Year 1962.

Table with columns: SOLD FOR TAXES, VALUATIONS BY SCHOOL DISTRICTS AS EQUALIZED BY DEPARTMENT OF TAXATION, Tax Including State Homestead, State Tax on Non-Homestead, SPECIAL TAXES, TOTAL TAXES, PAID, WHEN PAID, Number of Receipt, March Settlement 1963, June Settlement 1963, November Settlement 1963, Collections to First Monday in January 1964, Delinquent on First Monday in January 1964, Total Delinquent Tax and Penalty, REMARKS.

Vertical text on the right edge of the page, including '2nd Leslars Ponto', 'Kime Pa Point', 'East Store', 'Ada Fire Ponto North', 'Shodgrass Ist.', 'Addition'.

Assessment Roll and Tax List of Real Property in the Town of Ponto Lake

* Indicate Type of Property: R-Residential, C-Commercial, I-Industrial, U-Utility, F-Farm, L-Lakeshore, T-Timber, M-Mineral

Form 50 MILLER-DAVIS CO., MINNEAPOLIS

Table with columns: IN WHOSE NAME ASSESSED, SUBDIVISION, Description of Property, True and Full Valuations, Assessed Valuations, Final Equalized Value.

Cass County, Minnesota, for Taxes for the Year 1962.

Table with columns: VALUATIONS BY SCHOOL DISTRICTS AS EQUALIZED BY DEPARTMENT OF TAXATION, Tax Including State Homestead, State Tax on Non-Homestead, SPECIAL TAXES, TOTAL TAXES, PAID, WHEN PAID, Number of Receipt, March Settlement, June Settlement, November Settlement, Collections to First Monday in January 1964, Delinquent on First Monday in January 1964, Total Delinquent Tax and Penalty, REMARKS.

Vertical text on the right edge of the page, including 'Ponto Lake' and other location-related text.

Assessment Roll and Tax List of Real Property in the Town of Pointe Lake

* Indicate Type of Property: R-Residential, C-Commercial, I-Industrial, U-Utility, F-Farm, L-Lakeshore, T-Timber, M-Mineral

Form 50 MILLER-DAVIS CO., MINNEAPOLIS

Table with columns: IN WHOSE NAME ASSESSED, DESCRIPTION OF PROPERTY, TRUE AND FULL VALUATIONS, ASSESSED VALUATIONS, and FINAL EQUALIZED VALUE. Includes entries for Albert V. Smith and Franklin W. + Edna Knutson.

Cass County, Minnesota, for Taxes for the Year 1962.

Table with columns: VALUATIONS BY SCHOOL DISTRICTS AS EQUALIZED BY DEPARTMENT OF TAXATION, TAXES, PAID, WHEN PAID, and REMARKS. Includes tax amounts and payment dates.

Vertical text on the right edge of the page, including '2nd Lakeshore', 'Pointe Lake', and 'Shore Addition'.

Assessment Roll and Tax List of Real Property in the Town of Ponton Lake

* Indicate Type of Property: R-Residential, C-Commercial, I-Industrial, U-Utility, F-Farm, L-Lakeshore, T-Timber, M-Mineral

Form 50 MILLER-DAVIS CO., MINNEAPOLIS

Table with columns: IN WHOSE NAME ASSESSED, DESCRIPTION OF PROPERTY, ACRES, ASSESSED VALUATIONS (RURAL, ALL OTHER, MACHINERY, Seasonal and Recreational Cabins, TOTAL ASSESSED VALUE), FINAL EQUALIZED VALUE.

Cass County, Minnesota, for Taxes for the Year 1962.

Table with columns: VALUATIONS BY SCHOOL DISTRICTS AS EQUALIZED BY DEPARTMENT OF TAXATION, TAXES (SOLD FOR TAXES, SPECIAL TAXES, TOTAL TAXES), PAID, WHEN PAID, Number of Receipt, March Settlement 1963, June Settlement 1963, November Settlement 1963, Collections to First Monday in January 1964, Delinquent on First Monday in January 1964, Total Delinquent Tax and Penalty, REMARKS.

Assessment Roll and Tax List of Real Property in the Town of Ponto Lake

* Indicate Type of Property: R-Residential, C-Commercial, I-Industrial, U-Utility, F-Farm, L-Lakeshore, T-Timber, M-Mineral

Form 50 MILLER-DAVIS CO., MINNEAPOLIS

Blair Camp Ponto Point

Table with columns: IN WHOSE NAME ASSESSED, Ponto Pt. SUBDIVISION, No. School District, Indicate Home-Steer, No. of Acres, Description of Property, TRUE AND FULL VALUATIONS (LAND, BLDINGS, MACHINERY, TOTAL), ASSESSED VALUATIONS (RURAL, ALL OTHER, MACHINERY, Seasonal and Recreational Cabins, TOTAL ASSESSED VALUE), FINAL EQUALIZED VALUE.

Cass County, Minnesota, for Taxes for the Year 1962.

Table with columns: SOLD FOR TAXES, VALUATIONS BY SCHOOL DISTRICTS AS EQUALIZED BY DEPARTMENT OF TAXATION, Tax Including State Homestead, State Tax on Non-Homestead, SPECIAL TAXES, TOTAL TAXES, PAID, WHEN PAID, Number of Receipt, March Settlement 1963, June Settlement 1963, Penalty, November Settlement 1963, Penalty, Collections to First Monday in January 1964, Delinquent on First Monday in January 1964, Total Delinquent Tax and Penalty, REMARKS.

Snodgrass 2nd, Lesiers Lake, Ada Park, Shores Wood, Shores East Shore, Ada First, Ponto North, Snodgrass 1st, Addition

Assessment Roll and Tax List of Real Property in the Town of Pointe Lake

* Indicate Type of Property: R-Residential, C-Commercial, I-Industrial, U-Utility, F-Farm, L-Lakeshore, T-Timber, M-Mineral

Form 5C MILLER-DAVIS CO., MINNEAPOLIS

Bl Kinne Camp Bl Ponto Point Ada Pine East Shore Ada Pine Beach

Table with columns: IN WHOSE NAME ASSESSED, DESCRIPTION OF PROPERTY, ADDED FULL VALUATIONS (RURAL, ALL OTHER), ASSESSED VALUATIONS (RURAL, ALL OTHER), FINAL EQUALIZED VALUE, and REMARKS. Includes entries for W. F. + Mary Ann Henselin, Frank H. + Freida E. Bell, etc.

Cass County, Minnesota, for Taxes for the Year 1962.

Table with columns: SOLD FOR TAXES, VALUATIONS BY SCHOOL DISTRICTS AS EQUALIZED BY DEPARTMENT OF TAXATION, Tax including State Homestead, SPECIAL TAXES, TOTAL TAXES, PAID, WHEN PAID, Number of Receipt, March Settlement, June Settlement, November Settlement, Collections to First Monday in January 1964, Delinquent on First Monday in January 1964, Total Delinquent Tax and Penalty, and REMARKS. Includes entries for balance paid, 1st half paid, 2nd half paid, etc.

Snodgrass Addition 2nd Lakeshore Lake Ada Park Shady Wood Shores Haven South Shore Pointe North Snodgrass 1st Addition

Assessment Roll and Tax List of Real Property in the Town of Ponto Lake

* Indicate Type of Property: R-Residential, C-Commercial, I-Industrial, U-Utility, F-Farm, L-Lakeshore, T-Timber, M-Mineral

Form 5C MILLER-DAVIS CO., MINNEAPOLIS

Table with columns: IN WHOSE NAME ASSESSED, DESCRIPTION OF PROPERTY, SUBDIVISION, No. School District, Indicate Homestead Recr. Yes or No, Agri. or Sens. Recr. Yes or No, Indicate Type of Property, ASSESSED VALUATIONS (RURAL, ALL OTHER, MACHINERY, Seasonal and Recreational Cabins, TOTAL ASSESSED VALUE), Total Assessed Value as Equalized by the Board of Review, FINAL EQUALIZED VALUE.

Cass County, Minnesota, for Taxes for the Year 1962.

Table with columns: SOLD FOR TAXES, VALUATIONS BY SCHOOL DISTRICTS AS EQUALIZED BY DEPARTMENT OF TAXATION, Tax Including State Homestead, State Tax on Non-Homestead, SPECIAL TAXES, TOTAL TAXES, PAID, WHEN PAID, Number of Receipt, March Settlement 1963, June Settlement 1963, November Settlement 1963, Collections to First Monday in January 1964, Delinquent on First Monday in January 1964, Total Delinquent Tax and Penalty, REMARKS.

Assessment Roll and Tax List of Real Property in the Town of Ponto Lake

* Indicate Type of Property: R-Residential, C-Commercial, I-Industrial, U-Utility, F-Farm, L-Lakeshore, T-Timber, M-Mineral

Cass County, Minnesota, for Taxes for the Year 1962.

Form 5C MILLER-DAVIS CO., MINNEAPOLIS

Table with columns: IN WHOSE NAME ASSESSED, Plat of Shadywood Shores SUBDIVISION, Section or Lot, Town or Block, Number of Acres, Description of Property, Assessed Valuations (Rural, All Other, Machinery, etc.), Final Equalized Value, Sold for Taxes, Valuations by School Districts, Tax Including State Homestead, State Tax on Non-Homestead, Special Taxes, Total Taxes, PAID, WHEN PAID, Number of Receipt, March Settlement, June Settlement, Penalty, November Settlement, Penalty, Collections to First Monday in January, Delinquent on First Monday in January, Total Delinquent Tax and Penalty, REMARKS.

Vertical text on the left margin: Camp Ponto Lake, Kinne Cannon, Snodgrass Inc., Addition, Lashers Lake, Ada Park, Shady Wood Shores, East Shore, Pine Beach, Ponto North Shore, Snodgrass Inc. Addition.

Vertical text on the right margin: Halverson, South Shore, Pointe, Ponto Lake.

Assessment Roll and Tax List of Real Property in the Town of Ponto Lake

* Indicate Type of Property: R-Residential, C-Commercial, I-Industrial, U-Utility, F-Farm, L-Lakeshore, T-Timber, M-Mineral

Form 5C MILLER-DAVIS CO., MINNEAPOLIS

IN WHOSE NAME ASSESSED	DESCRIPTION OF PROPERTY			No. School District	Indicate Home-lead Yes or No	Agr. Recr. Yes or No	Indicate Type of Property	TRUE AND FULL VALUATIONS										Total Assessed Value as Equalized by the Board of Review	FINAL EQUALIZED VALUE			
	Sec. of Lot	Town or Block	Number of Acres of Land					LAND		BUILDINGS and Other Structures	MACHINERY Permanently Attached to Real Estate	TOTAL True and Full Value	RURAL			ALL OTHER				TOTAL ASSESSED VALUE		
								Acres	100ths				Exclusive of Improvements	Improvements	Homestead Up to \$4,000 20%	Over \$4,000 and Non-Homestead 33 1/2%	Timber Land Class 3e 20%				Homestead Up to \$4,000 25%	Over \$4,000 and Non-Homestead 40%
Howard W. Paulson	80			114	No	No	L	27-41		27					10	11	17					
"	81			No	No	L	40-60	227	198		99				60	66	99					
"	82			No	No	L	38-59	144	180		60				60	66	99					
"	83			No	No	L	38-59		38				15-23		14	15	23					
"	84			No	No	L	38-59		38				15-23		14	15	23					
"	85			No	No	L	27-41		27				11-17		10	11	17					
Alto B. Griffin	85			No	No	L	38-59		38				15-23		14	15	23					
Otto B. Griffin	86			No	No	L	33-50		33				13-20		12	13	20					
"	87			No	No	L	33-50		33				13-20		12	13	20					

251	144	395	60	86	146
274	158	432	66	93	159
413	237	650	99	143	242

Cass County, Minnesota, for Taxes for the Year 1962.

SOLD FOR TAXES	VALUATIONS BY SCHOOL DISTRICTS AS EQUALIZED BY DEPARTMENT OF TAXATION						Tax Including State Homestead	State Tax on Non-Homestead	SPECIAL TAXES	SPECIAL TAXES	TOTAL TAXES	PAID	WHEN PAID	Number of Receipt	March Settlement 1963	June Settlement 1963	Penalty	November Settlement 1963	Penalty	Collections to First Monday in January 1964	Penalty	Delinquent on First Monday in January 1964	Total Delinquent Tax and Penalty	REMARKS
	District No.	District No.	District No.	District No.	District No.	District No.																		
	Rate	Rate	Rate	Rate	Rate	Rate																		
1																								
2																								
3																								
4																								
5																								
6																								
7																								
8																								
9																								
10																								
11																								
12																								
13																								
14																								
15																								
16																								
17																								
18																								
19																								
20																								

242	NA	6460	208	6668	3651	3017
-----	----	------	-----	------	------	------

Can P
Kinne
Ponto
Plat of
Shadywood
Shores
Addition

Halays
Haven
South Shore
Point

Assessment Roll and Tax List of Real Property in the Town of Ponto Lake

* Indicate Type of Property: R-Residential, C-Commercial, I-Industrial, U-Utility, F-Farm, L-Lakeshore, T-Timber, M-Mineral

Form 50 MILLER-DAVIS CO., MINNEAPOLIS

Table with columns: IN WHOSE NAME ASSESSED, SUBDIVISION, No. School District, Indicate Homestead, Agri. Recr., Indicate Type of Property, TRUENED FULL VALUATIONS (LAND, BUILDINGS, MACHINERY, TOTAL), ASSESSED VALUATIONS (RURAL, ALL OTHER, MACHINERY, Seasonal and Recreational Cabins, TOTAL ASSESSED VALUE, Total Assessed Value as Equalized by the Board of Review), FINAL EQUALIZED VALUE.

Cass County, Minnesota, for Taxes for the Year 1962.

Table with columns: VALUATIONS BY SCHOOL DISTRICTS AS EQUALIZED BY DEPARTMENT OF TAXATION (District No., District No., District No., District No., District No., District No.), Tax Including State Homestead, State Tax on Non-Homestead, SPECIAL TAXES, SPECIAL TAXES, TOTAL TAXES, PAID, WHEN PAID, Number of Receipt, March Settlement 1963, June Settlement 1963, Penalty, November Settlement 1963, Penalty, Collections to First Monday in January 1964, Penalty, Delinquent on First Monday in January 1964, Total Delinquent Tax and Penalty, REMARKS.

Can P... Kinne... Ponto... Plat of... Ada Pine... Ponto North... Progress Ist...

South Shore... Pointe...

Assessment Roll and Tax List of Real Property in the Town of Ponto Lake

* Indicate Type of Property: R-Residential, C-Commercial, I-Industrial, U-Utility, F-Farm, L-Lakeshore, T-Timber, M-Mineral

Form 50 MILLER-DAVIS CO., MINNEAPOLIS

Table with columns: IN WHOSE NAME ASSESSED, DESCRIPTION OF PROPERTY, No. School District, Ind. Rec. Yes or No, Agri. Rec. Yes or No, Ind. Type of Property, TRUE AND FULL VALUATIONS (LAND, BUILDINGS, MACHINERY, TOTAL), ASSESSED VALUATIONS (RURAL, ALL OTHER, MACHINERY, Seasonal and Recreational Cabins, TOTAL ASSESSED VALUE), Total Assessed Value as Equalized by the Board of Review, FINAL EQUALIZED VALUE.

Cass County, Minnesota, for Taxes for the Year 1962.

Table with columns: SOLD FOR TAXES, VALUATIONS BY SCHOOL DISTRICTS AS EQUALIZED BY DEPARTMENT OF TAXATION (District No., Rate, Mills), Tax Including State Homestead, State Tax on Non-Homestead, SPECIAL TAXES, TOTAL TAXES, PAID, WHEN PAID, Number of Receipt, March Settlement 1963, June Settlement 1963, November Settlement 1963, Collections to First Monday in January 1964, Delinquent on First Monday in January 1964, Total Delinquent Tax and Penalty, REMARKS.

Vertical text on the left margin: Cass P. Kinne, Ponto, Leshers Lake, Snodgrass Tr., Addition, Ada Park, Shady Wood, Shores, Flat of, Shaleys, Haven, Ada Pine, Boelms, South Shore, Ponto North, Shore, Grass lot, Addition.

Vertical text on the right margin: Ponto, Cass County, Minnesota.

Assessment Roll and Tax List of Real Property in the Town of Ponto Lake

Form 50 MILLER-DAVIS CO., MINNEAPOLIS

* Indicate Type of Property: R-Residential, C-Commercial, I-Industrial, U-Utility, F-Farm, L-Lakeshore, T-Timber, M-Mineral

Table with columns: IN WHOSE NAME ASSESSED, DESCRIPTION OF PROPERTY, ASSESSED VALUATIONS (RURAL, ALL OTHER), and FINAL EQUALIZED VALUE. Includes handwritten entries for Grand Total and individual property values.

Cass County, Minnesota, for Taxes for the Year 1962.

Table with columns: VALUATIONS BY SCHOOL DISTRICTS AS EQUALIZED BY DEPARTMENT OF TAXATION, TAXES (SOLD FOR, PAID, WHEN PAID), and REMARKS. Includes handwritten entries for Grand Total and tax amounts.