

ASSESSMENT & TAX LIST - 1957

Ponto Lake

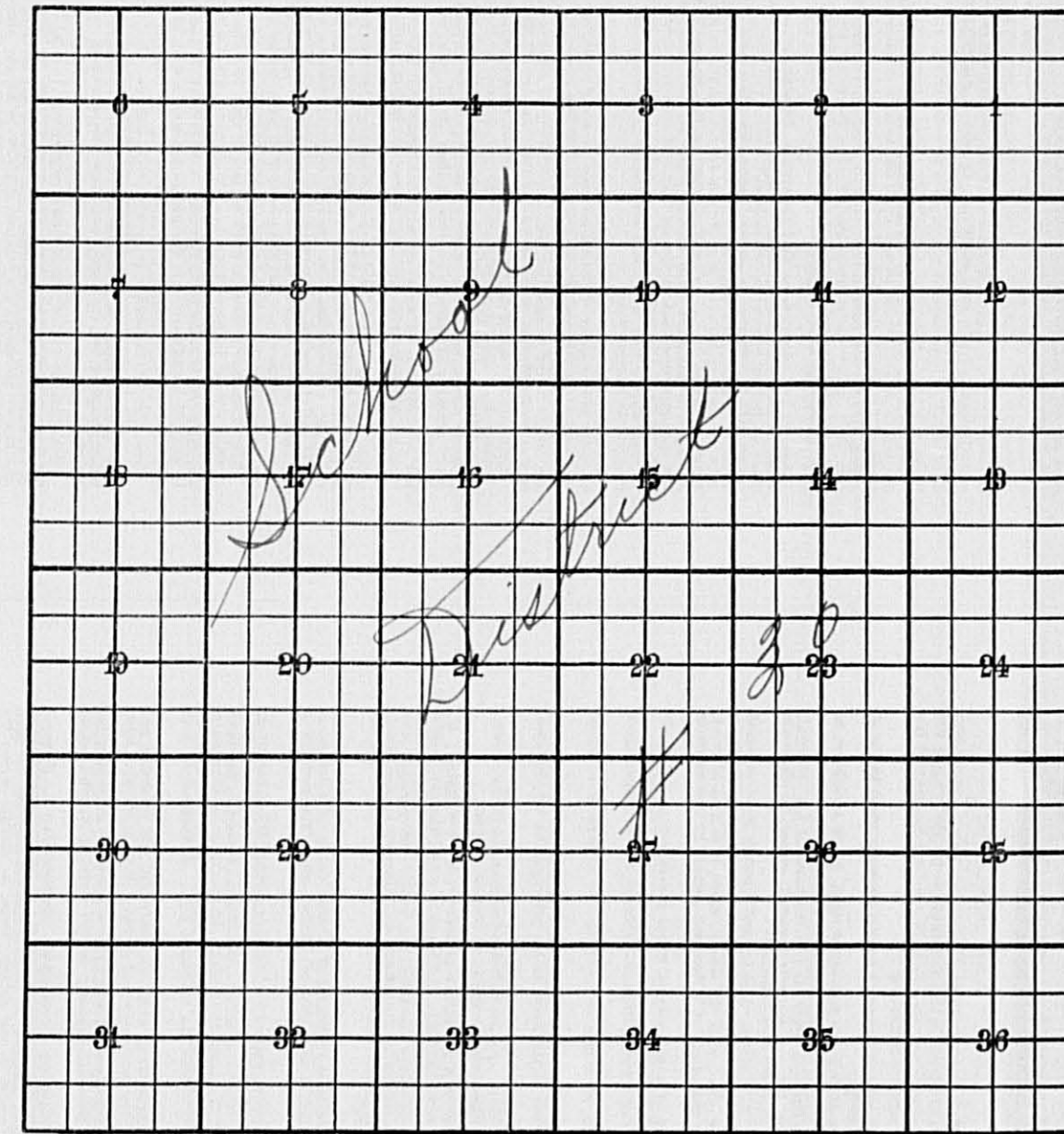
INDEX TO SECTIONS

SECTION PAGE

Sec. 1	
" 2	
" 3	
" 4	
" 5	
" 6	
" 7	
" 8	
" 9	
" 10	
" 11	
" 12	
" 13	
" 14	
" 15	
" 16	
" 17	
" 18	
" 19	
" 20	
" 21	
" 22	
" 23	
" 24	
" 25	
" 26	
" 27	
" 28	
" 29	
" 30	
" 31	
" 32	
" 33	
" 34	
" 35	
" 36	

For Convenience of Auditor in Showing Boundaries of School Districts

Township No. 139 Range No. 29 Mer. P. M.



became Ind. Sch. Dist. # 30
7-1-53

30 in road 114
Sept 6 1957.

Returns Showing Grain Received in or Handled by Elevators, Warehouses and Mills in the _____ of _____ in the _____ County of _____ for the Year Ending May 1, 1957.

NAMES OF OWNERS	ADDRESS	Bushels of Wheat	Bushels of Soy Beans	Bushels of Flax	Total No. of Bushels of Wheat, Soy Beans and Flax	★ Tax of 1/4 Mill per Bushel		Bushels of Corn	Bushels of Barley	Bushels of Rye	Bushels of Oats	Bushels of Buckwheat	Bushels of all Other Grains	Total No. Bushels Corn, Barley, Rye, Oats, Buckwheat and all Other Grains	★ Tax of 1/4 Mill Per Bushel		★ Total Tax		REMARKS	
						Dollars	Cts.								Dollars	Cts.	Dollars	Cts.		

Note ★ Assessors will not fill these Columns

Real Estate
Camp Blanche
Kaine Camp
Porto Point
Napanea Beach
lat of East Shore
line Beach

REAL PROPERTY BECOMING SUBJECT TO TAXATION SINCE THE LAST PREVIOUS ASSESSMENT OR OMITTED FROM ASSESSMENT ROLLS THE PREVIOUS YEARS.
 Assessment of Taxable Real Property in the _____ of _____ County of _____, Minn., for the Year 1957.

* Indicate Type of Property: R - Residential, C - Commercial, I - Industrial, U - Utility, F - Farm, L - Lakeshore, T - Timber, M - Mineral

Form 314 MILLER-DAVIS COMPANY, MINNEAPOLIS

NAME OF OWNER	School District	DESCRIPTION OF PROPERTY				Number of Acres of Land	Indicate Homestead Yes or No	Indicate Agricultural Yes or No	Indicate Type of Property	BY WHOM VALUED	TRUE AND FULL VALUATIONS				ASSESSED VALUATIONS					FINAL EQUALIZED VALUE	
		SUBDIVISION	Sec. or Lot	Twp. or Block	Rng.						LAND Exclusive of Structures and Improvements	BUILDINGS and Other Structures	MACHINERY Permanently Attached to Real Estate	TOTAL True and Full Value	RURAL		ALL OTHER		MACHINERY Permanently Attached to Real Estate		TOTAL ASSESSED VALUE
															Acres	100ths	Dollars	Dollars			

Total No. of Acres _____
 Total Value as Equalized by _____
 Total Value as Assessed by _____

SUMMARY OF TAX COLLECTION

Original Levy - - - - -	\$ 13,271.10
Additions - - - - -	\$ _____
	\$ 13,271.10
Abatements - - - - -	\$ 96.0
	\$ 13,175.10

COLLECTIONS

March Settlement - - - - -	\$ 2779.66
June Settlement - - - - -	\$ 8218.25
November Settlement - - - - -	\$ 1605.56
January Settlement - - - - -	\$ 61.02
	\$ 12,664.49
Over Collected - - - - -	\$ _____
Under Collected - - - - -	\$ _____
Delinquent - - - - -	\$ 597.01
	\$ 597.01
Total - - - - -	\$ 13,261.50

Camp Blanche
 Kinne Camp
 Ponto Point
 Napanee Beach
 Lat of East Shore
 Ine Beach

NAME OF OWNER

TABULAR SCHEDULE OF VALUATIONS,

LEVIED IN THE Town OF Ponts Lake

RATES AND TAXES

COUNTY OF CASS, STATE OF MINNESOTA

Table with columns: VALUATION BY SCHOOL DISTRICTS, RATE OF STATE TAXES, RATE OF COUNTY TAXES, RATE OF TOWN TAXES, RATE OF SCHOOL TAXES. Includes handwritten entries like 'R.B. P.P.', 'P.E.R.A.', 'Fire Phone', 'C.O.', 'P.E.R.A.' and numerical values for various categories.

Table with columns: SCHOOL TAXES, LOCAL 1 MILL AND SPECIAL SCHOOL TAXES BY DISTRICTS, ALL OTHER TAXES. Includes handwritten entries like 'Def. Lung. C.O. P.E.R.A.', 'County P.E.R.A.', 'Fire Phone', 'Welfare Def. R.S./B. Red Light' and various numerical values.

Total Number of Acres 12.215... State of Minnesota, COUNTY OF CASS, Auditor of said County and State aforesaid, do hereby certify that the foregoing is a true and correct Schedule, showing the valuation of all the taxable property, in the several Tax Funds levied thereon for the year A. D. 1957.

SEAL

Real Estate Camp Blanche Kinne Camp Ponts Lake Napanee Beach Lat of East Shore Line Beach

Total Taxes Real Estate 10,524.54 Pers. Prop. 2746.56 Total 13,271.10

Assessment of

Form 314 MILLER-DAY COMPANY, MINNEAPOLIS

COLLECTIONS OF TAXES OF 1958

Town OF *Ponto Lake*, CASS COUNTY, MINNESOTA

1
2
3
4
5
6
7
8

NAME OF OWNER

FUNDS	MARCH SETTLEMENT 1958	JUNE SETTLEMENT 1958	NOV. SETTLEMENT 1958	Amount Collected from Nov. 1958 to First Monday in Jan. 1959	REDUCTIONS	Total Reductions and Collected	BALANCE UNCOLLECTED	ADDITIONS	Total Uncollected to First Monday in January, 1959
State-Non-Homestead,	6606	17043	2113	12					
State-Homestead,	6479	19676	3913	156					
County Revenue,	32969	100116	19908	792					
County Road and Bridge,	16172	49109	9765	388					
County Welfare,	50833	154365	30695	1220					
County Bond and Interest,	4668	14176	2819	112					
Well. Proj.	3029	9200	1827	72					
P. & B. Proj.	5391	16371	3255	129					
P&RA	3159	9592	1907	76					
Town Revenue,	6145	18661	3711	148					
Town Road and Bridge,	6468	19643	3906	155					
Town Drag,	1078	3274	651	27					
Town State Loan,									
Co. Mural	2156	6547	1302	52					
P. & B. Bldg.	2156	6547	1303	52					
Cass Co. Agric.	539	1637	327	13					
Fire	5391	16370	3255	129					
Phone	5391	16370	3255	129					
School Local 1 Mill,	1079	3274	651	27					
School Special,	44664	116377	21554	647					
School State Loan,									
Deficiency	47609	144574	28750	1143					
Tuition									
Transportation	1100	3341	664	26					
Co. B.	22867	69440	13808	549					
P&RA	2015	6122	1216	48					
	277966	821825	160556	6102					

	SCHOOL DISTRICT NO.	LOCAL 1 MILL	SPECIAL	STATE LOAN	def.	Transp.	Co. B.	P&RA	TOTALS
MARCH SETTLEMENT	114-a	370	9239		16320	377	7839	691	34836
	114-7a	709	35427		31289	723	15028	1324	87500
	Totals	1079	44666		47609	1100	22867	2015	119336
JUNE SETTLEMENT	114-a	1893	47318		83582	1932	40145	3539	178409
	114-7a	1381	69059		60992	1409	29295	2583	164719
	Totals	3274	116377		144574	3341	69440	6122	343128
NOVEMBER SETTLEMENT	114 a	440	10997		19426	449	9330	522	41464
	114 7a	211	10557		9324	215	4478	394	25179
	Totals	651	21554		28750	664	13808	1216	66643
NOVEMBER to JANUARY	114 a	27	647		1143	26	549	48	2440
	Totals	27	647		1143	26	549	48	2440
	Totals	27	647		1143	26	549	48	2440
ADDITIONS									
	Totals								
	Totals								
REDUCTIONS									
	Totals								
	Totals								

Real Estate

Camp Blanche
Kinne Camp
Ponto Point
Japanese Beach
lat of East Shore
Ine Beach

9-4-59
18 cards for this section missing from file

Assessment Roll and Tax List of Real Property in the Town of Ponto Lake, Cass County, Minnesota, for Taxes for the Year 1957.

Cass County, Minnesota, for Taxes for the Year 1957.

Table with columns: IN WHOSE NAME ASSESSED, TO WHOM TRANSFERRED, DESCRIPTION OF PROPERTY, TRU AND FULL VALUATIONS, ASSESSED VALUATIONS, VALUATIONS BY SCHOOL DISTRICTS AS EQUALIZED BY DEPARTMENT OF TAXATION, TAXES, PAID, WHEN PAID, etc.

Real

ie

Camp Blanche
Kline Camp
Ponto Point
Napabee Beach
lat of East Shore
line Beach

Assessment Roll and Tax List of Real Property in the Town of Pontonaka,
Indicate Type of Property: R-Residential, C-Commercial, I-Industrial, U-Utility, F-Farm, L-Lakeshore, T-Timber, M-Mineral

Cass County, Minnesota, for Taxes for the Year 1957.

Table with multiple columns: IN WHOSE NAME ASSESSED, TO WHOM TRANSFERRED, DESCRIPTION OF PROPERTY, TRUE AND FULL VALUATIONS, ASSESSED VALUATIONS, VALUATIONS BY SCHOOL DISTRICTS AS EQUALIZED BY DEPARTMENT OF TAXATION. Includes handwritten entries for Rachel & Ragnhild Rethem, Lillian & Norman Michel, Peter Colas, Gunnar & Ovidia M. Nilsson, Anna Colas, and William E. & Tina W. Lund.

Real estate

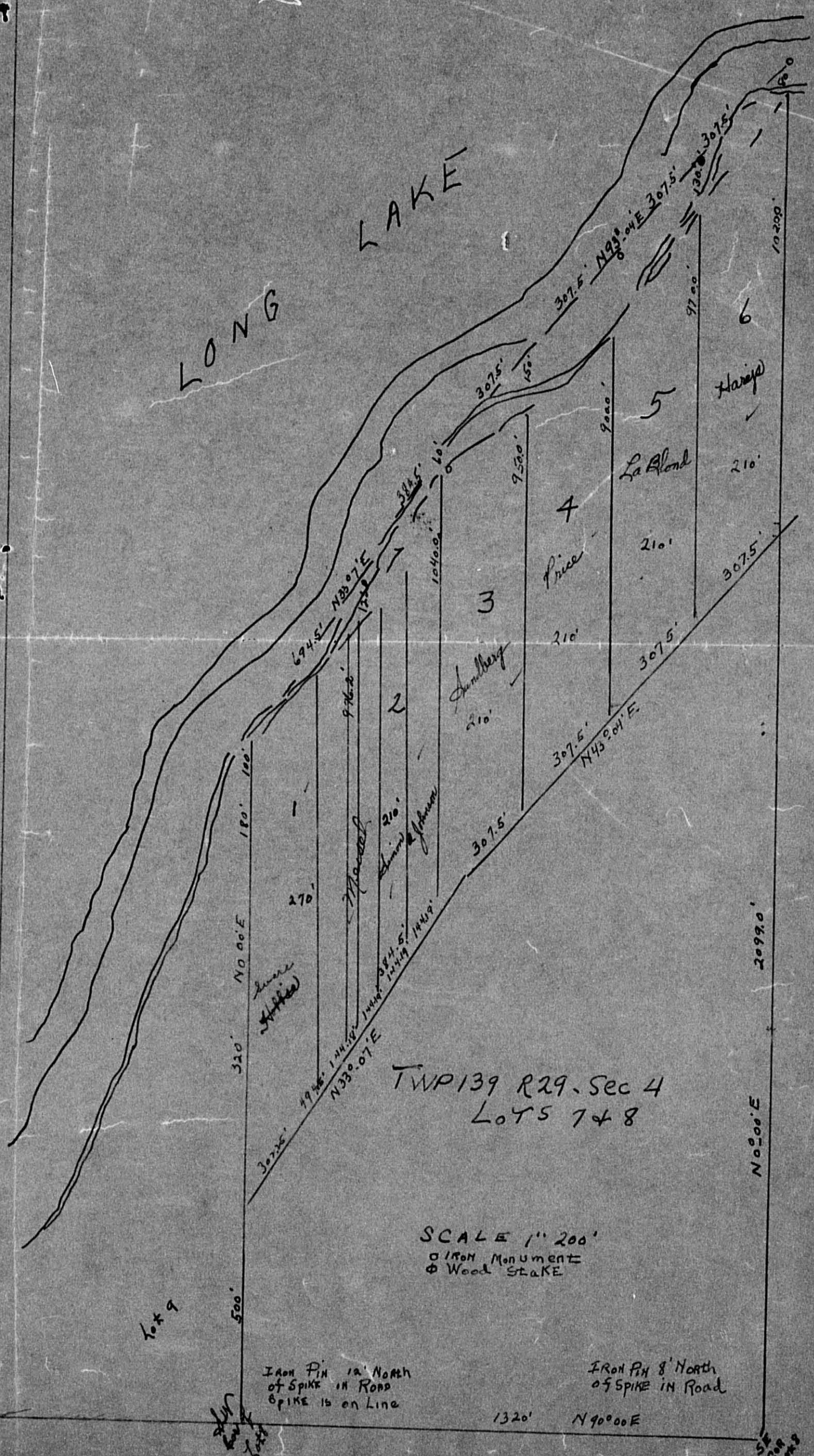
Camp

Kimbe Camp Pontonaka Beach lat of East Shore line Beach

1959

Pinto Lake

LONG LAKE



TWP 139 R29, Sec 4
 LOTS 7 & 8

SCALE 1" = 200'
 ○ IRON MONUMENT
 ⊕ WOOD STAKE

IRON PIN 12' NORTH
 OF SPIKE IN ROAD
 SPIKE IS ON LINE

IRON PIN 8' NORTH
 OF SPIKE IN ROAD

1320' N90°00'E

Lot 9

N0°00'E 2099.0'

10200'

Harjo

LaBlond

J. Amberg

Price

M. Powell

Lure (Hoffman)

Assessment Roll and Tax List of Real Property in the Town of Ponto Lake

Indicate Type of Property: R-Residential, C-Commercial, I-Industrial, U-Utility, F-Farm, L-Lakeshore, T-Timber, M-Mineral

Cass County, Minnesota, for Taxes for the Year 1957.

Table with columns: IN WHOSE NAME ASSESSED, TO WHOM TRANSFERRED, DESCRIPTION OF PROPERTY, TRUE AND FULL VALUATIONS, ASSESSED VALUATIONS (RURAL, ALL OTHER), TOTAL ASSESSED VALUE, and FINAL EQUALIZED VALUE.

Table with columns: SOLD FOR TAXES, VALUATIONS BY SCHOOL DISTRICTS AS EQUALIZED BY DEPARTMENT OF TAXATION, Tax including State Homestead, State Tax on Non-Homestead, SPECIAL TAXES, TOTAL TAXES, PAID, WHEN PAID, Number of Receipt, March Settlement, June Settlement, November Settlement, Collections to First Monday in January, Delinquent on First Monday in January, Total Delinquent Tax and Penalty, and REMARKS.

Real Estate

Camp

Kline Camp

Ponto Point

Napanea Beach

Lat of East Shore

Line Beach

Assessment Roll and Tax List of Real Property in the Town of Ponto Lake

Form SCD (56) MILLER-SAYRE COMPANY, MINNEAPOLIS

* Indicate Type of Property: R-Residential, C-Commercial, I-Industrial, U-Utility, F-Farm, L-Lakeshore, T-Timber, M-Mineral

Table with columns: IN WHOSE NAME ASSESSED, TO WHOM TRANSFERRED, DESCRIPTION OF PROPERTY, TRUE AND FULL VALUATIONS, ASSESSED VALUATIONS, and FINAL EQUALIZED VALUE. Includes handwritten entries for Mary E. Torrey, Wm. H. Torrey, Roney C. & Roma J. Cook, Vern D. & Elva V. Keep, Lela & Lee Reynolds, and State of Minnesota.

Cass County, Minnesota, for Taxes for the Year 1957.

Table with columns: VALUATIONS BY SCHOOL DISTRICTS AS EQUALIZED BY DEPARTMENT OF TAXATION, SOLD FOR TAXES, SPECIAL TAXES, TOTAL TAXES, PAID, WHEN PAID, Number of Receipt, March Settlement, June Settlement, November Settlement, Collections to First Monday in January 1959, Delinquent on First Monday in January 1959, Total Delinquent Tax and Penalty, and REMARKS. Includes handwritten entries for various districts and tax amounts.

Vertical text on the right edge of the page: Camp Ponto Point Napanee Beach lat of East Shore line Beach

Assessment Roll and Tax List of Real Property in the Town of Pointe Lake, Cass County, Minnesota, for Taxes for the Year 1957.

Form SCD (56) WILSON-JAY COMPANY, MINNEAPOLIS

Indicate Type of Property: R-Residential, C-Commercial, I-Industrial, U-Utility, F-Farm, L-Lakeshore, T-Timber, M-Mineral

Table with columns: IN WHOSE NAME ASSESSED, TO WHOM TRANSFERRED, DESCRIPTION OF PROPERTY, TRUE AND FULL VALUATIONS, ASSESSED VALUATIONS, and FINAL EQUALIZED VALUE. Includes handwritten entries for Willes B. & Nancy Combs, Charles B. & Laura K. Snyder, etc.

Cass County, Minnesota, for Taxes for the Year 1957.

Table with columns: VALUATIONS BY SCHOOL DISTRICTS AS EQUALIZED BY DEPARTMENT OF TAXATION, TAXES, PAID, WHEN PAID, Number of Receipt, March Settlement 1958, June Settlement 1958, Penalty Settlement 1958, Collections to First Monday in January 1959, Delinquent on First Monday in January 1959, Total Delinquent Tax and Penalty, and REMARKS.

97

Camp Pointe Lake Kinne Camp Pointe Pointe Napanee Beach Lat of East Shore line Beach

Assessment Roll and Tax List of Real Property in the Town of Pontonak

* Indicate Type of Property: R-Residential, C-Commercial, I-Industrial, U-Utility, F-Farm, L-Lakeshore, T-Timber, M-Mineral

Form SCD (56) JULY-1954 COUNTY, MINNESOTA

Table with columns: IN WHOSE NAME ASSESSED, TO WHOM TRANSFERRED, DESCRIPTION OF PROPERTY, TRUE AND FULL VALUATIONS, ASSESSED VALUATIONS, FINAL EQUALIZED VALUE.

Cass County, Minnesota, for Taxes for the Year 1957.

Table with columns: VALUATIONS BY SCHOOL DISTRICTS AS EQUALIZED BY DEPARTMENT OF TAXATION, TAXES, PAID, WHEN PAID, Number of Receipt, March Settlement 1958, June Settlement 1958, November Settlement 1958, Collections to First Monday in January 1959, Delinquent on First Monday in January 1959, Total Delinquent Tax and Penalty, REMARKS.

Assessment Roll and Tax List of Real Property in the Town of Ponto Lake,

Cass County, Minnesota, for Taxes for the Year 1957.

Form 3CD (56) MILLER-DIXIE COMPANY, MINNEAPOLIS

* Indicate Type of Property: R-Residential, C-Commercial, I-Industrial, U-Utility, F-Farm, L-Lakeshore, T-Timber, M-Mineral

Table with columns for property description, true and full valuations, assessed valuations, school district valuations, and tax payment status. Includes rows for State of Minnesota and Ray & Theodora A. Whitnak.

Assessment Roll and Tax List of Real Property in the Town of Ponto Lake,

* Indicate Type of Property: R-Residential, C-Commercial, I-Industrial, U-Utility, F-Farm, L-Lakeshore, T-Timber, M-Mineral

Cass County, Minnesota, for Taxes for the Year 1957.

Form 5CD (56) HILLS-CITY COMPANY, MINNEAPOLIS

Table with columns for 'IN WHOSE NAME ASSESSED', 'TO WHOM TRANSFERRED', 'DESCRIPTION OF PROPERTY', 'TRUE AND FULL VALUATIONS', 'ASSESSED VALUATIONS', 'VALUATIONS BY SCHOOL DISTRICTS AS EQUALIZED BY DEPARTMENT OF TAXATION', 'SPECIAL TAXES', 'TOTAL TAXES', 'PAID', 'WHEN PAID', 'Number of Receipt', 'March Settlement 1958', 'June Settlement 1958', 'November Settlement 1958', 'Collections to First Monday in January 1959', 'Penalty', 'Delinquent on First Monday in January 1959', 'Total Delinquent Tax and Penalty', and 'REMARKS'. Includes handwritten entries for Raymond F. & Louella R. Whitnack and State of Minnesota.

47 50

110

2588

74

2662

1452

1210

Cass County, Minnesota, for Taxes for the Year 1957. Ponto Lake. Kinne Camp. Ponto Point. Napanee Beach. East Shoreline Beach.

Assessment Roll and Tax List of Real Property in the Town of Ponto Lake

Indicate Type of Property: R-Residential, C-Commercial, I-Industrial, U-Utility, F-Farm, L-Lakeshore, T-Timber, M-Mineral

Cass County, Minnesota, for Taxes for the Year 1957.

Table with columns: IN WHOSE NAME ASSESSED, TO WHOM TRANSFERRED, DESCRIPTION OF PROPERTY, TRUE AND FULL VALUATIONS, ASSESSED VALUATIONS, VALUATIONS BY SCHOOL DISTRICTS AS EQUALIZED BY DEPARTMENT OF TAXATION, TAXES, PAID, WHEN PAID, Number of Receipt, March Settlement 1958, June Settlement 1958, November Settlement 1958, Collections to First Monday in January 1959, Delinquent on First Monday in January 1959, Total Delinquent Tax and Penalty, REMARKS.

State of Minnesota
Walter R. Jr. & Ellen M. Jefferson

Otto S. Griffin

State of Minnesota
Jerome Wecht & Earl Larson

John Theisen
Fred M. & Seabella K. Daughters

Elizabeth Rentzow
Elizabeth Hills

State of Minnesota
Otto S. Griffin

Bruce W. Sanborn

State of Minnesota

270 45

473
565
638

= 73
367 = 932
367 = 1005

9552
15008
24560

620

25180

19998

5382

Kimme Camp Ponto Point Napanee Beach Lat of East Shore line Beach

Assessment Roll and Tax List of Real Property in the Town of Pont Lake

Cass County, Minnesota, for Taxes for the Year 1957.

Form 500 (56) ... Indicate Type of Property: R-Residential, C-Commercial, I-Industrial, U-Utility, F-Farm, L-Lakeshore, T-Timber, M-Mineral

Table with columns: IN WHOSE NAME ASSESSED, TO WHOM TRANSFERRED, DESCRIPTION OF PROPERTY, TRUE AND FULL VALUATIONS, ASSESSED VALUATIONS, FINAL EQUALIZED VALUE.

Table with columns: VALUATIONS BY SCHOOL DISTRICTS AS EQUALIZED BY DEPARTMENT OF TAXATION, TAXES, PAID, WHEN PAID, Number of Receipt, March Settlement 1958, June Settlement 1958, November Settlement 1958, Collections to First Monday in January 1959, Delinquent on First Monday in January 1959, Total Delinquent Tax and Penalty, REMARKS.

Vertical text on the right edge: Camp, Kinne Camp, Pont Lake, Japanese Beach, East Shore, The Beach

Assessment Roll and Tax List of Real Property in the Town of Ponto Lake

* Indicate Type of Property: R-Residential, C-Commercial, I-Industrial, U-Utility, F-Farm, L-Lakeshore, T-Timber, M-Mineral

Form SCD (56) MILLER-DAVIS COMPANY, MINNEAPOLIS

IN WHOSE NAME ASSESSED	TO WHOM TRANSFERRED	DESCRIPTION OF PROPERTY			TRUE AND FULL VALUATIONS												FINAL EQUALIZED VALUE		
		SUBDIVISION	Sec. of Lot	Town or Block	No. of Acres of Land	ASSESSED VALUATIONS													
						LAND Exclusive of Structures and Improvements	BUILDINGS and Other Structures	MACHINERY Permanently Attached to Real Estate	TOTAL True and Full Value	RURAL		ALL OTHER			TOTAL ASSESSED VALUE	Total Assessed Value as Equalized by the Board of Review			
										Homestead Up to \$4,000 20%	Over \$4,000 and Non-Homestead 33 1/3%	Timber Land Class 3e 20%	Homestead Up to \$1,000 25%	Over \$1,000 and Non-Homestead 40%				MACHINERY Permanently Attached to Real Estate 33 1/3%	
					Dollars	Dollars	Dollars	Dollars	Dollars	Dollars	Dollars	Dollars	Dollars	Dollars					
Chas. H. & Rita Beardon Gregory	Paul & Frances E. Loomis	1st 1/2 sec "Kinn Camp"	16	13929	1750	20	110	70	T										
Ray J. & Add M. Layton	Robert G. Mull	NW 1/4 of NE 1/4			3552				F										
"	"	SW 1/4 of NE 1/4			3552				F										
"	"	SE 1/4 of NE 1/4			3552				F										
Ray & Add Layton	H. W. Seltman	2 acs. of SE 1/4 of NE 1/4			2				C										
Otto Oja	Jacob Sechida	NE 1/4 of NW 1/4			40				F										
"	"	NW 1/4 of NW 1/4			40				F										
"	"	SW 1/4 of NW 1/4			40				F										
"	"	SE 1/4 of NW 1/4			40				F										
Jacob W. & Helen Jullgraf	Mike Smith	77400 of E. 488' of SE 1/4 of NE 1/4			445				C										
"	"	NE 1/4 of SW 1/4			40				F										
"	"	NW 1/4 of SW 1/4			40				F										
"	"	SW 1/4 of SW 1/4			40				F										
"	"	SE 1/4 of SW 1/4			40				F										
"	"																		
Maggie Smith	"	NE 1/4 of SE 1/4			40				T										
"	"	NW 1/4 of SE 1/4			40				F										
"	"	SW 1/4 of SE 1/4			40				C										
"	"	SE 1/4 of SE 1/4			40				T										
					579	50													

(Continued on next page)

Cass County, Minnesota, for Taxes for the Year 1957.

SOLD FOR TAXES	VALUATIONS BY SCHOOL DISTRICTS AS EQUALIZED BY DEPARTMENT OF TAXATION						Tax including State Homestead	State Tax on Non-Homestead	SPECIAL TAXES	TOTAL TAXES	PAID	WHEN PAID	Number of Receipt	March Settlement 1958	June Settlement 1958	Penalty 1958	November Settlement 1958	Penalty 1958	Collections to First Monday in January 1959	Penalty 1959	Delinquent on First Monday in January 1959	Total Delinquent Tax and Penalty	REMARKS		
	District No.	District No.	District No.	District No.	District No.	District No.																			
	Rate	Rate	Rate	Rate	Rate	Rate																			
	Dollars	Dollars	Dollars	Dollars	Dollars	Dollars																			
1	114	114	114	114	114	72	48		1742	1	PAID IN FULL MAY 2 1958	7880		1742											
2										2													3769		
3						46			1082	3	PAID IN FULL APR 17 1958	2748		1082									6132		
4						45			1058	4	PAID IN FULL APR 17 1958			1058									6132		
5									2442	5	PAID IN FULL FEB 28 1958	302	2794												
6						83			1952	6	PAID IN FULL MAY 3 1 1958													2426 to 1021 St	
7						92			2164	7	PAID IN FULL MAY 3 1 1958													3676 Lincoln St	
8						73			1718	8	PAID IN FULL MAY 3 1 1958													"	
9						63			1482	9	PAID IN FULL MAY 3 1 1958													"	
10						135			3176	10	PAID IN FULL MAY 5 1958	7329		3176										3356	
11						35			824	11														824 906 3945	
12						66			1552	12														1552 1707 "	
13						68			1600	13														1600 1760 "	
14						76			1788	14														1788 1967 "	
15										15															
16						39			918	16															918 1010 "
17						68			1600	17															1600 1760 "
18									5752	18															5784 6365 "
19						38			894	19															894 983 "
20										20															
							616		8694			32534	2994		14578							14962			
							383		338																
							999		32196																

Camp Pine Camp Ponto Point Napanee Beach Lat of East Shore Ine Beach

Assessment Roll and Tax List of Real Property in the Town of Ponto Lake

Form 500 (56) MILLER-SAYRE COMPANY, MINNEAPOLIS

* Indicate Type of Property: R-Residential, C-Commercial, I-Industrial, U-Utility, F-Farm, L-Lakeshore, T-Timber, M-Mineral

Table with columns: IN WHOSE NAME ASSESSED, TO WHOM TRANSFERRED, DESCRIPTION OF PROPERTY, TRUE AND FULL VALUATIONS, ASSESSED VALUATIONS, FINAL EQUALIZED VALUE. Includes handwritten entries for Gladys R. & Alvin M. Kayser, W. Crouter, Benedict R. & Agnes M. Yochum, etc.

Cass County, Minnesota, for Taxes for the Year 1957.

Table with columns: SOLD FOR TAXES, VALUATIONS BY SCHOOL DISTRICTS AS EQUALIZED BY DEPARTMENT OF TAXATION, Tax including State Homestead, State Tax on Non-Homestead, SPECIAL TAXES, TOTAL TAXES, PAID, WHEN PAID, Number of Receipt, March Settlement 1958, June Settlement 1958, November Settlement 1958, Collections to First Monday in January 1959, Delinquent on First Monday in January 1959, Total Delinquent Tax and Penalty, REMARKS. Includes handwritten entries for property 1 through 20.

Camp Pine, Kane Camp, Ponto Point, Napanee Beach, lat of East Shore line Beach

Assessment Roll and Tax List of Real Property in the Town of Ponto Lake

* Indicate Type of Property: R-Residential, C-Commercial, I-Industrial, U-Utility, F-Farm, L-Lakeshore, T-Timber, M-Mineral

Form SCD (56) BULLOCK-BATH COMPANY, MINNEAPOLIS

Table with columns: IN WHOSE NAME ASSESSED, TO WHOM TRANSFERRED, SUBDIVISION, TRUE AND FULL VALUATIONS, ASSESSED VALUATIONS, and FINAL EQUALIZED VALUE.

630 86

Cass County, Minnesota, for Taxes for the Year 1957.

Table with columns: SOLD FOR TAXES, VALUATIONS BY SCHOOL DISTRICTS AS EQUALIZED BY DEPARTMENT OF TAXATION, SPECIAL TAXES, TOTAL TAXES, PAID, WHEN PAID, Number of Receipt, March Settlement 1958, June Settlement 1958, November Settlement 1958, Penalty, Collections to First Monday in January 1959, Delinquent on First Monday in January 1959, Total Delinquent Tax and Penalty, REMARKS.

* 742
151
893

21008 100

21108

2418 12503 6187

Cass County, Minnesota, for Taxes for the Year 1957. Kline Camp Ponto Point Napanee Beach lat of East Shore line Beach

Assessment Roll and Tax List of Real Property in the Town of Pontotoc

* Indicate Type of Property: R-Residential, C-Commercial, I-Industrial, U-Utility, F-Farm, L-Lakeshore, T-Timber, M-Mineral

Cass County, Minnesota, for Taxes for the Year 1957.

Table with columns: IN WHOSE NAME ASSESSED, TO WHOM TRANSFERRED, DESCRIPTION OF PROPERTY, TRUE AND FULL VALUATIONS, ASSESSED VALUATIONS, and FINAL EQUALIZED VALUE.

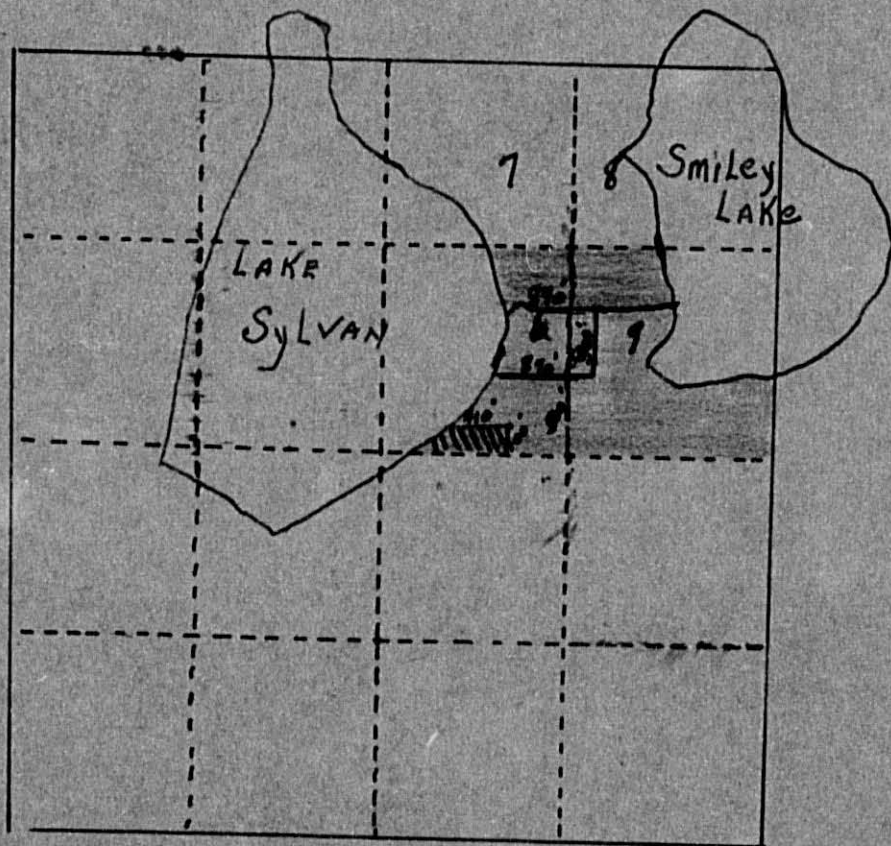
(Continued on next page)


Table with columns: SOLD FOR TAXES, VALUATIONS BY SCHOOL DISTRICTS AS EQUALIZED BY DEPARTMENT OF TAXATION, Tax including State Homestead, State Tax on Non-Homestead, SPECIAL TAXES, TOTAL TAXES, PAID, WHEN PAID, Number of Receipt, March Settlement, June Settlement, November Settlement, Collections to First Monday in January 1959, Delinquent on First Monday in January 1959, Total Delinquent Tax and Penalty, and REMARKS.

Camp Lake, Kinne Camp, Pontotoc, Napanee Beach, East Shore of the Beach

Goit Lots 6+9

Sec. 20 - 139 - 29



 S100' x W410' on 424.
 corner of Lot 6
 Bert & Aline Persons

X (870' x 500' of Lot 6+9)
 10 acs of S. 1000' of Lots 6+9
 Nick J. Laub

X S 1000' of Lot 6+9 less
 1/10 acre & less S. 100' of 20410'
 The Reckleton

X Lot 6+9 less S. 1000' (or
 N. 320' of Lot 6+9) L. G. Minette

Assessment Roll and Tax List of Real Property in the Town of Ponto Lake

Indicate Type of Property: R-Residential, C-Commercial, I-Industrial, U-Utility, F-Farm, L-Lakeshore, T-Timber, M-Mineral

Cass County, Minnesota, for Taxes for the Year 1957.

Table with columns: IN WHOSE NAME ASSESSED, TO WHOM TRANSFERRED, DESCRIPTION OF PROPERTY, TRUE AND FULL VALUATIONS, ASSESSED VALUATIONS, VALUATIONS BY SCHOOL DISTRICTS AS EQUALIZED BY DEPARTMENT OF TAXATION, TAXES, PAID, WHEN PAID, Number of Receipt, March Settlement, June Settlement, November Settlement, Collections to First Monday in January, Delinquent on First Monday in January, Total Delinquent Tax and Penalty, REMARKS.

56 95

Handwritten totals: 5882 140 6022

6022

Cass County Minnesota Ponto Lake Japanese Beach lat of East Shore line Beach

Assessment Roll and Tax List of Real Property in the Town of Ponto Lake

Indicate Type of Property: R-Residential, C-Commercial, I-Industrial, U-Utility, F-Farm, L-Lakeshore, T-Timber, M-Mineral

Form 5CD (56) JULY-1956 COMPILED, MINNEAPOLIS

Table with columns: IN WHOSE NAME ASSESSED, TO WHOM TRANSFERRED, DESCRIPTION OF PROPERTY (Subdivision, Sec. of Lot, Town or Block, Reg., Number of Acres of Land), TRUE AND FULL VALUATIONS (RURAL, ALL OTHER, MACHINERY), ASSESSED VALUATIONS (Homestead, Over \$4,000 and Non-Homestead, Timber Land, etc.), TOTAL ASSESSED VALUE, and FINAL EQUALIZED VALUE.

Cass County, Minnesota, for Taxes for the Year 1957.

Table with columns: SOLD FOR TAXES, VALUATIONS BY SCHOOL DISTRICTS AS EQUALIZED BY DEPARTMENT OF TAXATION (District No., Rate, etc.), Tax including State Homestead, State Tax on Non-Homestead, SPECIAL TAXES, TOTAL TAXES, PAID, WHEN PAID (Month, Day, Year), and REMARKS.

Cass County, Minnesota, for Taxes for the Year 1957. Ponto Lake, East Shore of the Beach

Assessment Roll and Tax List of Real Property in the Town of Ponto Lake,
* Indicate Type of Property: R-Residential, C-Commercial, I-Industrial, U-Utility, F-Farm, L-Lakeshore, T-Timber, M-Mineral

Form SCD (56) WILSON-BLVD COMPANY, MINNEAPOLIS

Table with columns: IN WHOSE NAME ASSESSED, TO WHOM TRANSFERRED, SUBDIVISION, TRUE AND FULL VALUATIONS, ASSESSED VALUATIONS, FINAL EQUALIZED VALUE.

Cass County, Minnesota, for Taxes for the Year 1957.

Table with columns: VALUATIONS BY SCHOOL DISTRICTS AS EQUALIZED BY DEPARTMENT OF TAXATION, TAXES, PAID, WHEN PAID, SPECIAL TAXES, TOTAL TAXES, MARCH SETTLEMENT, JUNE SETTLEMENT, PENALTY, NOVEMBER SETTLEMENT, COLLECTIONS TO FIRST MONDAY IN JANUARY 1959, DELINQUENT ON FIRST MONDAY IN JANUARY 1959, TOTAL DELINQUENT TAX AND PENALTY, REMARKS.

Assessment Roll and Tax List of Real Property in the Town of Pont Lake

Indicate Type of Property: R-Residential, C-Commercial, I-Industrial, U-Utility, F-Farm, L-Lakeshore, T-Timber, M-Mineral

Cass County, Minnesota, for Taxes for the Year 1957.

Table with columns: IN WHOSE NAME ASSESSED, TO WHOM TRANSFERRED, DESCRIPTION OF PROPERTY, TRUE AND FULL VALUATIONS, ABSESSED VALUATIONS, and FINAL EQUALIZED VALUE.

(Continued on next page)

Table with columns: VALUATIONS BY SCHOOL DISTRICTS AS EQUALIZED BY DEPARTMENT OF TAXATION, TAXES, PAID, WHEN PAID, and REMARKS.

Camp Point Kinross Camp Point Napanee Beach Lat of East Shore Pine Beach

Assessment Roll and Tax List of Real Property in the Town of Ponto Lake

Indicate Type of Property: R-Residential, C-Commercial, I-Industrial, U-Utility, F-Farm, L-Lakeshore, T-Timber, M-Mineral

Form 5CD (56) MILLER-GAY COMPANY, MINNEAPOLIS

Table with columns: IN WHOSE NAME ASSESSED, TO WHOM TRANSFERRED, DESCRIPTION OF PROPERTY, TRUE AND FULL VALUATIONS, ASSESSED VALUATIONS, and FINAL EQUALIZED VALUE.

(Continued on next page) S. 7' of N. 215. 72' less W. 12 1/2'

Cass County, Minnesota, for Taxes for the Year 1957.

Table with columns: VALUATIONS BY SCHOOL DISTRICTS AS EQUALIZED BY DEPARTMENT OF TAXATION, Tax including State Homestead, State Tax on Non-Homestead, SPECIAL TAXES, TOTAL TAXES, PAID, WHEN PAID, Number of Receipt, March Settlement 1958, June Settlement 1958, Penalty, November Settlement 1958, Penalty, Collections to First Monday in January 1959, Penalty, Delinquent on First Monday in January 1959, Total Delinquent Tax and Penalty, REMARKS.

Vertical text on the right edge of the page: Camp Ponto Point Japanese Beach, East Shore Pine Beach

Assessment Roll and Tax List of Real Property in the Town of Ponto Lake,

Cass County, Minnesota, for Taxes for the Year 1957.

Form 5CD (56) MILLER-DAY COMPANY, MINNEAPOLIS * Indicate Type of Property: R-Residential, C-Commercial, I-Industrial, U-Utility, F-Farm, L-Lakeshore, T-Timber, M-Mineral

Table with columns: IN WHOSE NAME ASSESSED, TO WHOM TRANSFERRED, DESCRIPTION OF PROPERTY (SUBDIVISION, Sec. or Lot, Town or Block, Reg., Number of Acres of Land, No. School District, Indicate Homestead, Indicate Agricultural, Indicate Type of Property), TRUE AND FULL VALUATIONS (LAND, BUILDINGS, MACHINERY, TOTAL True and Full Value), ASSESSED VALUATIONS (RURAL, ALL OTHER, TOTAL ASSESSED VALUE, Total Assessed Value as Equalized by the Board of Review), FINAL EQUALIZED VALUE.

Table with columns: SOLD FOR TAXES, VALUATIONS BY SCHOOL DISTRICTS AS EQUALIZED BY DEPARTMENT OF TAXATION (District No., District No., District No., District No., District No., District No., District No., District No., District No., District No., District No., District No., District No., District No., District No.), Tax including State Homestead, State Tax on Non-Homestead, SPECIAL TAXES, TOTAL TAXES, PAID, WHEN PAID (Month, Day, Year), Number of Receipt, March Settlement 1958, June Settlement 1958, Penalty, November Settlement 1958, Penalty, Collections to First Monday in January 1959, Penalty, Delinquent on First Monday in January 1959, Total Delinquent Tax and Penalty, REMARKS.

James H. & Sylvia S. Fullerton

" " "

Clayton E. & Ada O. Peterson

" " "

Daniel M. & Angeline M. Koolittle

Matt L. & Lucille Novatny

Van & Olive Alexander

" " "

William E. & Flora B. Anderson

" " "

" " "

State of Minnesota

State of Minnesota

Clayton E. & Ada O. Peterson

Red River Lumber Co.

" " "

" " "

" " "

" " "

" " "

" " "

440 50

4175

513

688

161 84

342

165 26

345

163 45

1 81

Cass County, Minnesota, for Taxes for the Year 1957. (Vertical text on the right edge of the page)

Assessment Roll and Tax List of Real Property in the Town of Ponto Lake

Cass County, Minnesota, for Taxes for the Year 1957.

Form 5C (56) MILLER-BELVE COMPANY, MINNEAPOLIS. Indicate Type of Property: R-Residential, C-Commercial, I-Industrial, U-Utility, F-Farm, L-Lakeshore, T-Timber, M-Mineral

Table with columns: IN WHOSE NAME ASSESSED, TO WHOM TRANSFERRED, SUBDIVISION, TRUE AND FULL VALUATIONS (RURAL, ALL OTHER, MACHINERY), TOTAL ASSESSED VALUE, and FINAL EQUALIZED VALUE. Includes handwritten notes and signatures.

Table with columns: VALUATIONS BY SCHOOL DISTRICTS AS EQUALIZED BY DEPARTMENT OF TAXATION, TAX INCLUDING STATE HOMESTEAD, SPECIAL TAXES, TOTAL TAXES, PAID, WHEN PAID, Number of Receipt, March Settlement, June Settlement, Penalty, November Settlement, Collections to First Monday in January 1959, Delinquent on First Monday in January 1959, Total Delinquent Tax and Penalty, REMARKS.

Camp Blanche

Ponto North Shore, Kinnear Camp, Ponto Point, Napanee Beach, 1st Add, East Shore

Assessment Roll and Tax List of Real Property in the Town of Pontolake

Cass County, Minnesota, for Taxes for the Year 1957.

Form 30 (56) HILLS-BAY COMPANY, MINNEAPOLIS
* Indicate Type of Property: R-Residential, C-Commercial, I-Industrial, U-Utility, F-Farm, L-Lakeshore, T-Timber, M-Mineral

Kinne Camp

Table with columns: IN WHOSE NAME ASSESSED, TO WHOM TRANSFERRED, SUBDIVISION, Sec. or Lot, Town or Block, Reg., Number of Acres of Land, No. School District, Indicate Homestead Tax, Indicate Agricultural Tax, Indicate Type of Property, TRUE AND FULL VALUATIONS (LAND, BUILDINGS, MACHINERY), ASSESSED VALUATIONS (RURAL, ALL OTHER), TOTAL ASSESSED VALUE, Total Assessed Value as Equalized by the Board of Review, FINAL EQUALIZED VALUE.

Table with columns: VALUATIONS BY SCHOOL DISTRICTS AS EQUALIZED BY DEPARTMENT OF TAXATION, TAXES (SPECIAL, TOTAL), PAID, WHEN PAID, Number of Receipt, March Settlement 1958, June Settlement 1958, Penalty, November Settlement 1958, Collections to First Monday in January 1959, Delinquent on First Monday in January 1959, Total Delinquent Tax and Penalty, REMARKS.

Ponto North Shore Acres, Snodgrass 1st add., Ponto Point, Napanee Beach at of East Shore

Assessment Roll and Tax List of Real Property in the Town of Ponto Lake

Cass County, Minnesota, for Taxes for the Year 1957.

Form 5C (56) MILLER-BAYNE COMPANY, MINNEAPOLIS. Indicate Type of Property: R-Residential, C-Commercial, I-Industrial, U-Utility, F-Farm, L-Lakeshore, T-Timber, M-Mineral

Table with columns: IN WHOSE NAME ASSESSED, TO WHOM TRANSFERRED, SUBDIVISION, Sec. of Lot, Town or Block, Ring, Number of Acres of Land, TRUE AND FULL VALUATIONS (RURAL, ALL OTHER, MACHINERY), TOTAL ASSESSED VALUE, and FINAL EQUALIZED VALUE.

Table with columns: SOLD FOR TAXES, VALUATIONS BY SCHOOL DISTRICTS AS EQUALIZED BY DEPARTMENT OF TAXATION, Tax including State Homestead, State Tax on Non-Homestead, SPECIAL TAXES, TOTAL TAXES, PAID, WHEN PAID, Number of Receipt, March Settlement 1958, June Settlement 1958, November Settlement 1958, Collections to First Monday in January 1959, Delinquent on First Monday in January 1959, Total Delinquent Tax and Penalty, and REMARKS.

Camp Blanche, Kinne Camp, Ponto Point

Snodgrass 1st Add, Napanee Beach, East Shore

Assessment Roll and Tax List of Real Property in the Town of Ponto Lake,

Cass County, Minnesota, for Taxes for the Year 1957.

* Indicate Type of Property: R-Residential, C-Commercial, I-Industrial, U-Utility, F-Farm, L-Lakeshore, T-Timber, M-Mineral

Table with columns: IN WHOSE NAME ASSESSED, TO WHOM TRANSFERRED, SUBDIVISION, TRUE AND FULL VALUATIONS (RURAL, ALL OTHER), ASSESSED VALUATIONS, VALUATIONS BY SCHOOL DISTRICTS AS EQUALIZED BY DEPARTMENT OF TAXATION, SOLD FOR TAXES, SPECIAL TAXES, TOTAL TAXES, PAID, WHEN PAID, Number of Receipt, March Settlement 1958, June Settlement 1958, November Settlement 1958, Penalty, Collections to First Monday in January 1959, Delinquent on First Monday in January 1959, Total Delinquent Tax and Penalty, REMARKS.

Stirling F. Sargent & Lillian Lushby
" " " "
Guy B. & Blanche R. Williams
" " "
Titus B. & Juanita M. Sargent
William H. & Leola E. Gustason
Jennie S. & Frank Fishback
Titus & Juanita M. Sargent
William H. & Leola E. Gustason
Jennie S. & Frank Fishback
George J. Schatter
Titus B. & Juanita M. Sargent

Ponto Point
1/2 of 12 2
13
14
15 less 71.25'
16
17 less 3.97'
18
19
20

No. School District
Indicate Homestead Yes or No
Indicate Agricultural Yes or No
Indicate Type of Property
LAND Exclusive of Structures and Improvements
BUILDINGS and Other Structures
MACHINERY Permanently Attached to Real Estate
TOTAL True and Full Value
RURAL: Homestead Up to \$4,000 20%, Over \$4,000 and Non-Homestead 33 1/3%
ALL OTHER: Homestead Up to \$4,000 25%, Over \$4,000 and Non-Homestead 40%
MACHINERY Permanently Attached to Real Estate 33 1/3%
TOTAL ASSESSED VALUE
Total Assessed Value as Equalized by the Board of Review
FINAL EQUALIZED VALUE

SOLD FOR TAXES
District No., District No., District No., District No., District No., District No., Rate, Rate, Rate, Rate, Rate, Rate
Tax including State Homestead
State Tax on Non-Homestead
SPECIAL TAXES
TOTAL TAXES
PAID
WHEN PAID
Number of Receipt
March Settlement 1958
June Settlement 1958
November Settlement 1958
Penalty
Collections to First Monday in January 1959
Penalty
Delinquent on First Monday in January 1959
Total Delinquent Tax and Penalty
REMARKS

Table columns corresponding to the 'VALUATIONS BY SCHOOL DISTRICTS...' and 'SOLD FOR TAXES' sections, containing numerical data and handwritten notes like 'PAID IN FULL'.

4118
366
424
12598 240
12838
5046 7526
266

Assessment Roll and Tax List of Real Property in the Town of Ponto Lake

Indicate Type of Property: R-Residential, C-Commercial, I-Industrial, U-Utility, F-Farm, L-Lakeshore, T-Timber, M-Mineral

Cass County, Minnesota, for Taxes for the Year 1957.

Form 5C (56) MILLER-BLVD COMPANY, MINNEAPOLIS

Main table with columns: IN WHOSE NAME ASSESSED, TO WHOM TRANSFERRED, DESCRIPTION OF PROPERTY, TRUE AND FULL VALUATIONS, ASSESSED VALUATIONS, VALUATIONS BY SCHOOL DISTRICTS AS EQUALIZED BY DEPARTMENT OF TAXATION, TAXES, PAID, WHEN PAID, Number of Receipt, March Settlement 1958, June Settlement 1958, November Settlement 1958, Collections to First Monday in January 1959, Delinquent on First Monday in January 1959, Total Delinquent Tax and Penalty, REMARKS.

Mapanee Beach Ponto Point Kinne Camp Camp Blanche

Ponto Lakes Snodgrass 1st Add. Snodgrass 2nd Add. to East Shore Plat of East Shore

Assessment Roll and Tax List of Real Property in the Town of Pontolake

Indicate Type of Property: R-Residential, C-Commercial, I-Industrial, U-Utility, F-Farm, L-Lakeshore, T-Timber, M-Mineral

Cass County, Minnesota, for Taxes for the Year 1957.

Table with columns: IN WHOSE NAME ASSESSED, TO WHOM TRANSFERRED, DESCRIPTION OF PROPERTY, TRUE AND FULL VALUATIONS, ASSESSED VALUATIONS, VALUATIONS BY SCHOOL DISTRICTS AS EQUALIZED BY DEPARTMENT OF TAXATION, TAXES, PAID, WHEN PAID, Number of Receipt, March Settlement, June Settlement, Penalty, November Settlement, Penalty, Collections to First Monday in January 1959, Penalty, Delinquent on First Monday in January 1959, Total Delinquent Tax and Penalty, REMARKS.

Plat of East Shore Spancee Beach Ponton Point Kinne Camp Camp Blanche

Ponton Point Kinne Camp Spancee Beach East Shore 1st Add. Spodgrass 2nd Add. to East Shore Lesheida Pine Beach

Assessment Roll and Tax List of Real Property in the Town of Pointe Lake

* Indicate Type of Property: R-Residential, C-Commercial, I-Industrial, U-Utility, F-Farm, L-Lakeshore, T-Timber, M-Mineral

Table with columns: IN WHOSE NAME ASSESSED, TO WHOM TRANSFERRED, SUBDIVISION, TRUE AND FULL VALUATIONS, ASSESSED VALUATIONS, FINAL EQUALIZED VALUE. Includes handwritten entries for Martin + Marion S. Wobasil, John + Bessie Lewis, Fred H. + Marion F. Bartholomew, Fred W. Lang, Leon O. Smith, Ward W. + Ellen P. Boyd.

Cass County, Minnesota, for Taxes for the Year 1957.

Table with columns: VALUATIONS BY SCHOOL DISTRICTS AS EQUALIZED BY DEPARTMENT OF TAXATION, SOLD FOR TAXES, SPECIAL TAXES, TOTAL TAXES, PAID, WHEN PAID, March Settlement, June Settlement, November Settlement, Collections to First Monday in January 1959, Delinquent on First Monday in January 1959, Total Delinquent Tax and Penalty, REMARKS. Includes handwritten entries for 'PAID IN FULL' and dates like 'MAY 31 1958'.

Plat of East Shore Spinee Beach Pointe Point Kinne Camp

Pointe Lake Spinee Beach Pointe Point Kinne Camp

Assessment Roll and Tax List of Real Property in the Town of Pontonak

* Indicate Type of Property: R-Residential, C-Commercial, I-Industrial, U-Utility, F-Farm, L-Lakeshore, T-Timber, M-Mineral

Cass County, Minnesota, for Taxes for the Year 1957.

Form 30 (56) WILLIAMSBURG, MISSOURI

Table with columns: IN WHOSE NAME ASSESSED, TO WHOM TRANSFERRED, DESCRIPTION OF PROPERTY, TRUE AND FULL VALUATIONS, ASSESSED VALUATIONS, and FINAL EQUALIZED VALUE.

Table with columns: VALUATIONS BY SCHOOL DISTRICTS AS EQUALIZED BY DEPARTMENT OF TAXATION, TAX including State Homestead, SPECIAL TAXES, TOTAL TAXES, PAID, WHEN PAID, and REMARKS.

Flat of East Shore Spance Beach Pontonak Point Kinne Camp

Point N. Shore es Snodgrass 1st add. Snodgrass 2nd Add. Leshel, Ida Pine Beach

Assessment Roll and Tax List of Real Property in the Town of Ponto Lake

* Indicate Type of Property: R-Residential, C-Commercial, I-Industrial, U-Utility, F-Farm, L-Lakeshore, T-Timber, M-Mineral

Cass County, Minnesota, for Taxes for the Year 1957.

Table with columns: IN WHOSE NAME ASSESSED, TO WHOM TRANSFERRED, SUBDIVISION, Sec. of Lot, Town or Block, Rng., Number of Acres of Land, No. School District, Indicate Homestead, Indicate Agricultural, Indicate Type of Property, TRUE AND FULL VALUATIONS (LAND, BUILDINGS, MACHINERY), ASSESSED VALUATIONS (RURAL, ALL OTHER, MACHINERY), TOTAL ASSESSED VALUE, Total Assessed Value as Equalized by the Board of Review, FINAL EQUALIZED VALUE.

Table with columns: SOLD FOR TAXES, VALUATIONS BY SCHOOL DISTRICTS AS EQUALIZED BY DEPARTMENT OF TAXATION, District No., District Rate, SPECIAL TAXES, TOTAL TAXES, PAID, WHEN PAID, Number of Receipt, March Settlement 1958, June Settlement 1958, November Settlement 1958, Penalty, Collections to First Monday in January 1959, Delinquent on First Monday in January 1959, Total Delinquent Tax and Penalty, REMARKS.

Map of East Shore Spance Beach Ponto Point Kinne Camp Ada Pine Beach

Ponto Lake East Shore Snodgrass 1st Add. Snodgrass 2nd Add. Leshner's Lake Ada Pine Beach

Assessment Roll and Tax List of Real Property in the Town of Ponto Lake

Cass County, Minnesota, for Taxes for the Year 1957.

Form 50 (57) BILLS-BAYB COMPANY, MINNEAPOLIS
* Indicate Type of Property: R-Residential, C-Commercial, I-Industrial, U-Utility, F-Farm, L-Lakeshore, T-Timber, M-Mineral

Table with columns: IN WHOSE NAME ASSESSED, TO WHOM TRANSFERRED, SUBDIVISION, DESCRIPTION OF PROPERTY, TRUE AND FULL VALUATIONS (LAND, BUILDINGS, MACHINERY, TOTAL), ASSESSED VALUATIONS (RURAL, ALL OTHER, MACHINERY, TOTAL ASSESSED), Total Assessed Value as Equalized, FINAL EQUALIZED VALUE.

Charles J. Jenschaff
" "
" "
Harris L. Johnson
" "
Ernest F. & Greg Kuarnas Wilkie
" "
Arthur F. & Bernadette V. Elson
" "
" "
" "
" "

Ada Pine Beach

30 110 110 L

Table with columns: VALUATIONS BY SCHOOL DISTRICTS AS EQUALIZED BY DEPARTMENT OF TAXATION (District No., Rate, etc.), SOLD FOR TAXES, SPECIAL TAXES, TOTAL TAXES, PAID, WHEN PAID, Number of Receipt, March Settlement, June Settlement, Penalty, November Settlement, Collections to First Monday in January in 1959, Delinquent on First Monday in January in 1959, Total Delinquent Tax and Penalty, REMARKS.

#86
298
384

9994 196

10190

7041 3149

anche
Camp
Kinne
Point
Beach
Ada Pine

Ponto North Shore
East Shore
Snodgrass 2nd Add.
Leshers Lake

Assessment Roll and Tax List of Real Property in the Town of Ponto Lake

Cass County, Minnesota, for Taxes for the Year 1957.

Form 30 (56) MILLER-GAYNE COMPANY, MINNEAPOLIS
* Indicate Type of Property: R-Residential, C-Commercial, I-Industrial, U-Utility, F-Farm, L-Lakeshore, T-Timber, M-Mineral

IN WHOSE NAME ASSESSED	TO WHOM TRANSFERRED	DESCRIPTION OF PROPERTY					TRUE AND FULL VALUATIONS											FINAL EQUALIZED VALUE				
		SUBDIVISION	Sec. of Lot	Town or Block	Number of Acres of Land	No. School District	Indicate Homestead Tax or No	Indicate Agricultural Tax or No	Indicate Type of Property	ASSESSED VALUATIONS												
										LAND Exclusive of Structures and Improvements	BUILDINGS and Other Structures	MACHINERY Permanently Attached to Real Estate	TOTAL True and Full Value	RURAL		ALL OTHER				TOTAL ASSESSED VALUE	Total Assessed Value as Equalized by the Board of Review	
														Homestead Up to \$4,000 20%	Over \$4,000 and Non-Homestead 33 1/3%	Timber Land Class 3e 20%	Homestead Up to \$4,000 25%		Over \$4,000 and Non-Homestead 40%			MACHINERY Permanently Attached to Real Estate 33 1/3%
									Dollars	Dollars	Dollars	Dollars	Dollars	Dollars	Dollars	Dollars	Dollars	Dollars				

to Edget Shore

Ober & Vivian Kobe

Glenn & Rosetta E. Snodgrass

Ben & Lyla Ansley

Robert & Dorothy Osborne

SOLD FOR TAXES	VALUATIONS BY SCHOOL DISTRICTS AS EQUALIZED BY DEPARTMENT OF TAXATION						Tax including State Homestead	State Tax on Non-Homestead	SPECIAL TAXES	TOTAL TAXES	PAID	WHEN PAID	Number of Receipt	March Settlement 1958	June Settlement 1958	Penalty 1958	November Settlement 1958	Penalty 1958	Collections to First Monday in January 1959	Penalty 1959	Delinquent on First Monday in January 1959	Total Delinquent Tax and Penalty	REMARKS
	District No.	District No.	District No.	District No.	District No.	District No.																	
	Rate	Rate	Rate	Rate	Rate	Rate																	
	Mills	Mills	Mills	Mills	Mills	Mills																	

184

4788

122

4910

1

PAID IN FULL

MAY 3 1 1958

14030

4910

3919

124

3228

82

3310

3

PAID IN FULL

MAY 3 1 1958

14028

3310

3920

170

4424

112

4536

4

PAID IN FULL

AUG 2 1 1958

15314

4536

1 13

3366

478

12440

316

12756

8220

4536

Ponto North Shore

Ponto Point

Snodgrass 1st Add. to East Shore

East Shore Spancee Beach

Ada Pine Beach

Shad

Shores

Haley Haven

Snodgrass 2nd Add. to East Shore

Leshner's Lake Park

Assessment Roll and Tax List of Real Property in the Town of Ponton Lake

Indicate Type of Property: R-Residential, C-Commercial, I-Industrial, U-Utility, F-Farm, L-Lakeshore, T-Timber, M-Mineral

Form 30 (56) MILLER-GAYNE SURVEY, MINNEAPOLIS

Table with columns: IN WHOSE NAME ASSESSED, TO WHOM TRANSFERRED, SUBDIVISION, Description of Property, TRUE AND FULL VALUATIONS, ASSESSED VALUATIONS, FINAL EQUALIZED VALUE.

Cass County, Minnesota, for Taxes for the Year 1957.

Table with columns: VALUATIONS BY SCHOOL DISTRICTS AS EQUALIZED BY DEPARTMENT OF TAXATION, SOLD FOR TAXES, SPECIAL TAXES, TOTAL TAXES, PAID, WHEN PAID, Number of Receipt, March Settlement, June Settlement, November Settlement, Collections to First Monday in January 1959, Delinquent on First Monday in January 1959, Total Delinquent Tax and Penalty, REMARKS.

Ponton North Shore, Snodgrass 1st Add. to East Shore, Snodgrass 2nd Add. to East Shore, Plusher's Lake Add. to East Shore, Snodgrass 2nd Add. to East Shore, Park

Shady Wood Shores, Ley Haven, Personal

Assessment Roll and Tax List of Real Property in the Town of Ponte Lake

* Indicate Type of Property: R-Residential, C-Commercial, I-Industrial, U-Utility, F-Farm, L-Lakeshore, T-Timber, M-Mineral

Form 5C (56) WILSON-JONES COMPANY, MINNEAPOLIS

Table with columns: IN WHOSE NAME ASSESSED, TO WHOM TRANSFERRED, SUBDIVISION, TRUE AND FULL VALUATIONS (LAND, BUILDINGS, MACHINERY, TOTAL), ASSESSED VALUATIONS (RURAL, ALL OTHER, MACHINERY, TOTAL), Total Assessed Value, FINAL EQUALIZED VALUE. Includes handwritten entries for 'Otto L. Griffin' and 'Shady Wood Shores'.

Cass County, Minnesota, for Taxes for the Year 1957.

Table with columns: SOLD FOR TAXES, VALUATIONS BY SCHOOL DISTRICTS AS EQUALIZED BY DEPARTMENT OF TAXATION, Tax Including State Homestead, State Tax on Non-Homestead, SPECIAL TAXES, TOTAL TAXES, PAID, WHEN PAID, Number of Receipt, March Settlement 1958, June Settlement 1958, November Settlement 1958, Penalty, Collections to First Monday in January 1959, Delinquent on First Monday in January 1959, Total Delinquent Tax and Penalty, REMARKS. Includes handwritten tax amounts and dates.

Assessment Roll and Tax List of Real Property in the Town of Ponte Lake, Minnesota

Form 5C (56) WILSON-JAYNE COMPANY, MINNEAPOLIS

Indicate Type of Property: R-Residential, C-Commercial, I-Industrial, U-Utility, F-Farm, L-Lakeshore, T-Timber, M-Mineral

Table with columns: IN WHOSE NAME ASSESSED, TO WHOM TRANSFERRED, DESCRIPTION OF PROPERTY, TRU AND FULL VALUATIONS, ASSESSED VALUATIONS, FINAL EQUALIZED VALUE.

Shady Wood Shores

Handwritten names: Otto S. Griffin, Hiram J. & Julia H. Gruba, Otto S. Griffin

Main table body containing property details for lots 1-20, including lot number, subdivision, area, and assessed values.

Table with columns: VALUATIONS BY SCHOOL DISTRICTS AS EQUALIZED BY DEPARTMENT OF TAXATION, TAX including State Homestead, State Tax on Non-Homestead, SPECIAL TAXES, TOTAL TAXES, PAID, WHEN PAID, Number of Receipt, March Settlement 1958, June Settlement 1958, November Settlement 1958, Collections to First Monday in January 1959, Delinquent on First Monday in January 1959, Total Delinquent Tax and Penalty, REMARKS.

Main table body containing tax details for lots 1-20, including school district valuations, tax amounts, payment dates, and settlement information.

Vertical text on the left edge: Ad Lusher's Lake Adas Snodgrass 2nd Add. to East Shore, Snodgrass 1st Add. to East Shore, Shady Wood Shores

Vertical text on the right edge: Halcyon Haven

Vertical text on the right edge: Personal

Assessment Roll and Tax List of Real Property in the *Town* of *Ponto Lake*

Cass County, Minnesota, for Taxes for the Year 1957.

Form 5C (56) MLLER-GATE DISPLAY, MINNEAPOLIS

* Indicate Type of Property: R-Residential, C-Commercial, I-Industrial, U-Utility, F-Farm, L-Lakeshore, T-Timber, M-Mineral

Main table with columns: IN WHOSE NAME ASSESSED, TO WHOM TRANSFERRED, DESCRIPTION OF PROPERTY, TRUE AND FULL VALUATIONS, ASSESSED VALUATIONS, VALUATIONS BY SCHOOL DISTRICTS AS EQUALIZED BY DEPARTMENT OF TAXATION, TAXES, PAID, WHEN PAID, Number of Receipt, March Settlement 1958, June Settlement 1958, November Settlement 1958, Collections to First Monday in January 1959, Delinquent on First Monday in January 1959, Total Delinquent Tax and Penalty, REMARKS.

Total Acres 12 215 99

Grand Totals

*119921 + 2955 = 14887
13332 / 13955 = 27287
25264 / 16910 = 42174*

5943.30 4400.92 180.32 10524.54

Shady Wood Shores
Haley Haven
Shodgrass 2nd Add.
Lusher's Lake Park
Lusher's Lake Park
Lusher's Lake Park

Personal