

ASSESSMENT & TAX LIST

Ponto Lake

1948





Math Eymer - Buildings lowered  
from #610 to #450 (line 6 - page 17)

---

M. Pearl Carroll (line 15 - page 17)  
Land raised to #36 - Buildings raised to 150

---

Mrs Omar Todd - Lot 3 - Sec 15 -  
(Line 20 - page 17) land raised from #21 to #36

---

Elmer Ellingson - 1/4 of Lot 1 - Sec 15 -  
(Line 1 - page 18) raised to #36.

---

Kick & Hickmann (line 2 - page 18) raised to  
\$36<sup>00</sup> on land

---

Kathryn H. Greene (line 3 - page 18) raised to  
\$36<sup>00</sup> on land

---

O. Harve Dinger (line 4 - page 18) raised to  
\$36<sup>00</sup> on land

---

Edith Mary Leatler (line 5 - page 18) raised to  
\$36<sup>00</sup> on land

O. W. Huesmann (line 6 - page 18) raised  
to \$36<sup>00</sup> on land

J. Magnus Rohne (line 7 - page 18) raised  
to \$36<sup>00</sup> on land

Flora A. Boermeke (line 9 - page 18) raised  
to \$36<sup>00</sup> on land.

Groves of Omaha Outing - Lot 4 -  
(page 56 - line 4) - granted homestead rights.

Lots 1-7-11 of Omaha Outing, <sup>land</sup> lowered  
from \$40 to \$36 (Lines 1-7-11) page 56.

Gustave E. & Ann King Ellsram Building  
raised from \$160 to \$200 (page 20 - line 7)

Fred Emmons land lowered from 267 to  
\$160 (line 9 - page 31)

Basil M. Brewer - land reduced to \$160 - no buildings,  
no homestead rights (Page 31 - line 11)

W. J. & Mary Ann Henselin -

S.W.  $\frac{1}{4}$  of S.W.  $\frac{1}{4}$  of Sec. 27 raised from \$125 to \$250

S.E.  $\frac{1}{4}$  of S.W.  $\frac{1}{4}$  of Sec. 27 raised to \$160

No homestead exemption on these two  
forties. (Page 32 - lines 13 & 14).

W. J. & Mary Ann Henselin (Page 54 - Line 1)

Sec 27 - Lot 1 -

Homestead on the \$480<sup>00</sup> - Home

No Homestead on the cabin - Raise cabin

from \$75<sup>00</sup> to \$100<sup>00</sup>

Vida Mildred Brown (Page 33 - line 11)

Sec. 28 - North 3 acres of lot 2 - Raise  
building from \$90<sup>00</sup> to \$150<sup>00</sup>

Leland Sawyer (Page 24 - line 12)

Sec. 20 - Lot 3 - 37.20 A - reduce from \$330<sup>00</sup>  
to \$148<sup>00</sup> - (brush land)

Walter A. Bruckner - entitled to Homestead rights on

(Page 23 - line 19) S.E.  $\frac{1}{4}$  of S.E.  $\frac{1}{4}$  - Sec 19 -

Page 24 - " 13) - 39.00 A

" 24 - line 14) 32. A

Leona Barchus (page 23 - line 11)  
N.E. of S.W. - Sec 19 - cut to \$160<sup>00</sup>

A. J. M<sup>rs</sup> Clintock (page 23 - line 17)  
Sec. 19 - 40A - Reduce to \$160<sup>00</sup>

H. W. & Ruth A. Stowe (page 36 - line 13)  
Lot 4 - raised from \$60 to \$100  
Cabins raised from \$75 to \$150  
No Homestead right

Arthur O. & Luella Anderson (Page 37 - line 7)  
reduced from \$165 to \$88

Bertie Whited (Page 37 - line 20)  
Sec. 32 - Buildings lowered from \$300 to \$150

Leslie & Esther Shepard (page 38 - line 14)  
S.E.  $\frac{1}{4}$  of S.E.  $\frac{1}{4}$  lowered from \$265 to \$160

Leslie & Esther Shepard (page 38 - line 16)  
N.E. of S.E. - Reduce from \$200 to \$160  
N.W. of S.E. (Line 17 - page 38) Reduce from \$200 to \$160

James & Sylvia B. Fullerton (page 40 - line 1)  
N.E. of N.E. - reduce from \$246 to \$198

Harry & Katharine Chapman (Page 40 - line 9)  
Buildings raised from \$110 to \$200

Peter & Julia Anderson (page 40 - line 11)  
S.E. of S.H. Sec 34 - land lowered from \$246 to \$160

Leona Mass (page 41 - line 7)  
S.W.  $\frac{1}{4}$  of N.W.  $\frac{1}{4}$  - Sec. 35 - land reduced from \$246 to \$160

Clifton Kuckow (page 41 - line 11)  
N.E. of S.H. - land raised from \$198 to \$246  
No buildings

Walter L. & Alice S. Chapman (page 46  
Line 4)  
Lot 3 of Kinne Camp - No Homestead exemption

Katie Miller { page 47 } Lot 1 - block 2 of Ponto Point  
line 9 } Raise from \$108 to \$150

E. F. & Inez Sargent (page 48  
line 1) of Ponto Point - no buildings

Walter H. Poirford (page 48  
line 4) Ponto Point  
no buildings shown

R. J. Henderson (page 47  
line 19) Lot 11 of Ponto Point -  
list buildings at \$100.00

Arthur O. Anderson / page 49 / Lot 2 of Nazeme Beach  
Lower buildings from \$600 to \$500  
line 2

A. E. Sadbury / page 49 / lot 4  
line 4  
Raise from \$72 to \$100 on buildings



Esther Reed McKay / page 49 / Lot 6  
Raise from \$81 to \$100 on buildings  
line 6

---

Arthur L & Bernadette V. Olson / page 55  
Lot 27 - No Homestead rights, / line 9

wait for assessed. on Page 32 Line 8

sent card over with English 8/6/48

SUMMARY OF TAX COLLECTION

Original Levy	- - - - -	\$ 7494.24
Additions	- - - - -	\$ 2.10
Cancellations	- - - - -	\$ 108.40
Abatements	- - - - -	\$ 43.98
		\$ 9344.76

COLLECTIONS

March Settlement	- - - - -	\$ 1,564.50
June Settlement	- - - - -	\$ 4,538.97
November Settlement	- - - - -	\$ 1,633.92
January Settlement	- - - - -	\$ 299.98
		\$
Over Collected	- - - - -	\$ 4.40
Under Collected	- - - - -	\$
Delinquent	- - - - -	\$ 1,324.23
Total	- - - - -	\$ 9,357.17

Treasurer's Office, Cass County, Minnesota

RECEIVED this, the first Monday (being the 3rd day) of January, A. D. 1949, of L. C. Peterson, Auditor of said County, Minnesota, the Tax List of all Taxable Real and Personal Property in the Town of Ponto Lake in said County for the year A. D. 1948, as specified above and amounting to \_\_\_\_\_ Dollars

Paul D. Jewell  
County Treasurer  
E. C. P.

Office of County Treasurer, Cass County, Minnesota

To L. C. Peterson, County Auditor:

January - 2 1949  
I herewith return to you the Tax List for the Town of Ponto Lake in said County for the year 1948, heretofore received from you. I certify that I have compared the same with the duplicate receipts in your office, and have written opposite the amount of each tax so received the words "First Quarter Paid", "Second Quarter Paid", "Third Quarter Paid" or "Paid in full" as the case may be, and the number of my receipt given in discharge of said tax, and each tract or lot of real property against which the taxes remain unpaid is delinquent for said year.

Yours respectfully,

County Treasurer.

Auditor's Office, Cass County, Minnesota

I, \_\_\_\_\_ Auditor of said County, and State of Minnesota, do hereby certify that the following is a correct list of the Taxes levied on the Real and Personal Property in the \_\_\_\_\_ of \_\_\_\_\_ for the year 1948.

WITNESS my hand and official seal, the \_\_\_\_\_ day of \_\_\_\_\_ 1949.

(SEAL) \_\_\_\_\_ County Auditor.

Auditor's Office, Cass County, Minnesota

\_\_\_\_\_ 194\_\_\_\_\_  
I hereby certify that on the first Monday in January 1950, I received of \_\_\_\_\_ County Treasurer, the Tax List of the \_\_\_\_\_ of \_\_\_\_\_ in said County for the year 1948; that I have compared the said list with the Statements received for by said Treasurer, which are on file in my office, and that each tract or lot of real property therein against which the taxes, or any part thereof, remains unpaid are delinquent for said year.

(SEAL) \_\_\_\_\_ County Auditor.



COLLECTIONS OF TAXES OF 1947 OF Tonto Lake, CASS COUNTY, MINNESOTA

FUNDS	MARCH SETTLEMENT 1947	JUNE SETTLEMENT 1947	NOV. SETTLEMENT 1947	Amount Collected from Nov. 1, 1947, to First Monday in Jan. 1948	REDUCTIONS	Total Reductions and Collected	BALANCE UNCOLLECTED	ADDITIONS	Total Uncollected to First Monday in January, 1948
State—Non-Homestead,	25 26	57 13	15 58	380					
State—Homestead,	19 32	58 32	20 98	422					
County Revenue,	155 37	468 96	168 71	3052					
County Road and Bridge,	47 81	144 29	51 91	939					
County Welfare,	322 06	977 98	349 67	63 25					
County Bond and Interest,	52 46	158 32	56 76	1030					
SKY.	43 16	130 27	46 86	848					
Town Revenue,	39 84	120 24	43 26	783					
Town Road and Bridge,	13 28	40 08	14 42	261					
Town Drag,	6 64	20 04	7 21	130					
Town State Loan, <i>Law</i>	33 20	100 20	36 05	852					
<i>2nd Indg.</i>	127 50	384 78	138 43	2504					
<i>Judge St. Loan</i>	17 93	354 11	19 47	352					
<i>Ed</i>	33 20	100 20	36 05	652					
School Local 1 Mill,	6 64	20 04	7 21	130					
School Special,	179 22	377 20	141 70	2860					
School State Loan,									
Deficiency	265 62	501 63	288 39	52 17					
Tuition									
Transportation	11 95	36 07	12 98	234					
B+I	97 61	294 60	105 77	19 17					
C. O.	66 41	200 41	72 07	1304					
	1564 50	4538 97	1633 92	299 92					

	SCHOOL DISTRICT NO.	LOCAL 1 MILL	SPECIAL	STATE LOAN	<i>Transp.</i>	<i>Defici.</i>	<i>B+I</i>	<i>C.O.</i>	TOTALS
MARCH SETTLEMENT	School District No. <i>A-WW</i>	133	20 00		240	53 84	19 60	13 34	110 01
	<i>NA-WW</i>	531	159 22		955	212 28	78 01	53 07	517 44
	Totals	664	179 22		11 95	265 62	97 61	66 41	627 45
JUNE SETTLEMENT	School District No. <i>A-WW</i>	1493	223 95		2687	597 19	219 47	149 30	1231 71
	<i>NA-WW</i>	511	153 35		920	204 44	75 13	51 11	498 34
	Totals	2004	377 30		3607	801 63	294 60	200 41	1730 05
NOVEMBER SETTLEMENT	School District No. <i>A-WW</i>	477	74 55		895	198 85	73 08	47 71	410 11
	<i>NA-WW</i>	224	67 15		403	87 54	32 91	22 38	218 25
	Totals	721	141 70		1298	288 39	105 99	72 07	628 36
NOVEMBER to JANUARY	School District No. <i>A-WW</i>	70	10 53		126	25 09	10 32	7 02	57 92
	<i>NA-WW</i>	60	18 07		108	24 08	8 85	6 02	158 70
	Totals	130	28 60		234	52 17	19 17	13 04	116 62
ADDITIONS	School District No.								
	Totals								
REDUCTIONS	School District No.								
	Totals								

Camp Blanche  
Kings Camp  
Ponto Point  
Majane Beach  
East Shore

REAL



Assessment Roll and Tax List of Real Property in the Town of Ponts Lake

Cass County, Minnesota, for Taxes for the Year 1948.

Main table with columns: IN WHOSE NAME ASSESSED, TO WHOM TRANSFERRED, DESCRIPTION OF PROPERTY, TRUE AND FULL VALUATIONS, ASSESSED VALUATIONS, VALUATIONS BY SCHOOL DISTRICTS AS EQUALIZED BY DEPARTMENT OF TAXATION, SOLD FOR TAXES, PAID, WHEN PAID, etc.

REAL

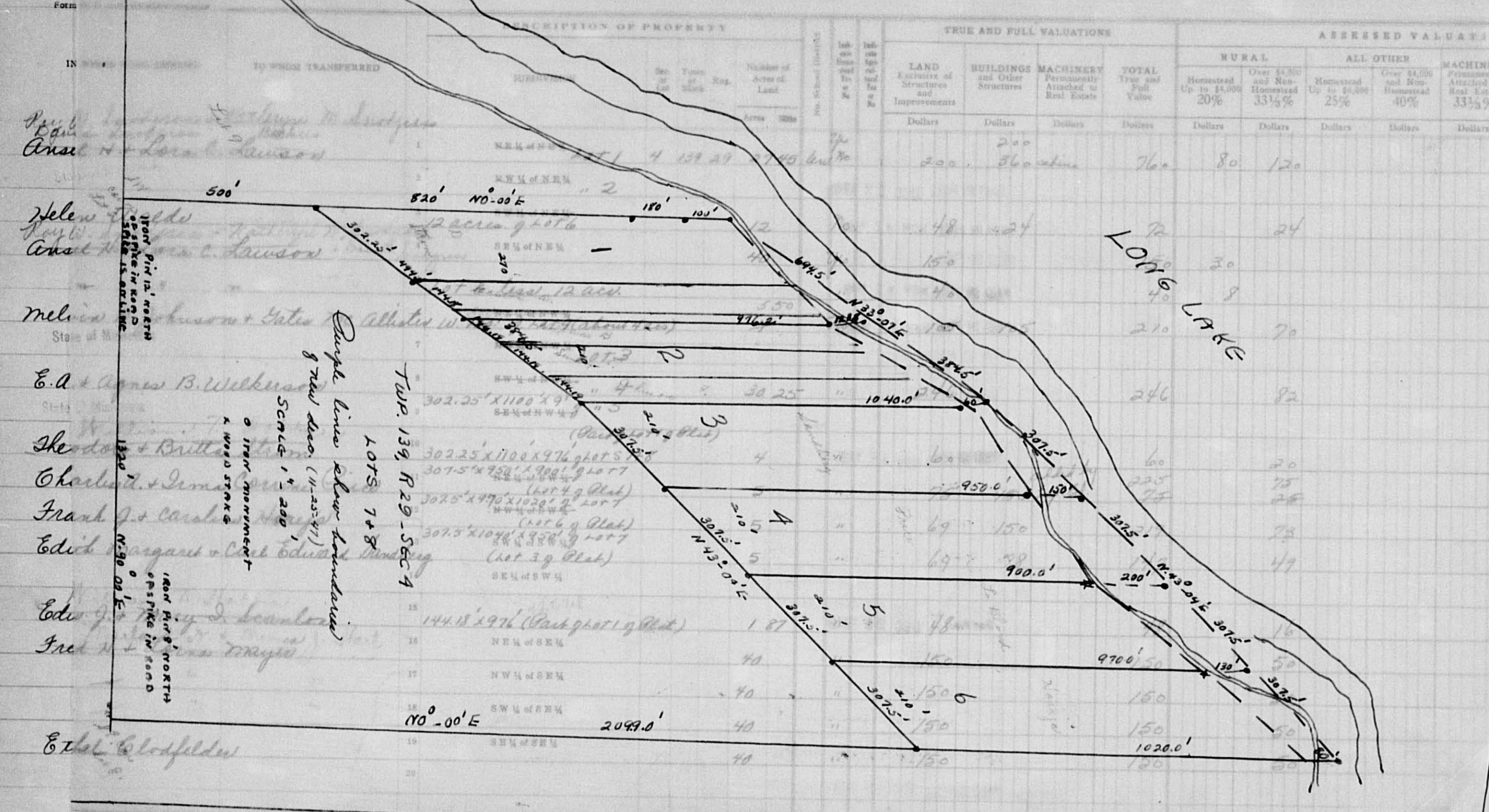
Camp Blanche, Kimms Camp, Ponts Lake, Napree Beach, East Shore







Assessment Roll and Tax List of Real Property in the Town of Pointe Lake



Cass County, Minnesota, for Taxes for the Year 1948.

SOLD FOR TAXES	VALUATIONS BY SCHOOL DISTRICTS AS EQUALIZED BY DEPARTMENT OF TAXATION						Tax including State Homestead	State Tax on Non-Homestead	SPECIAL TAXES	TOTAL TAXES	PAID	WHEN PAID	Number of Receipt	March Settlement 1949	June Settlement 1949	November Settlement 1949	Collections to First Monday in January 1950	Delinquent on First Monday in January 1950	Total Delinquent Tax and Penalty	REMARKS	
	District No.	District Rate	District No.	District Rate	District No.	District Rate															
1							4696	46	4742	1	PAID IN FULL MAY 28 1948	6572		4242							
2										2											
3																					
4							528	10	538	3	PAID IN FULL SEP 9 1948	12120									
5							66		66	4	PAID IN FULL MAY 28 1949	6511		660							
6							176		176	5	PAID IN FULL MAY 28 1949	6571		176							
7							1538	28	1566	6	PAID IN FULL MAY 31 1949	8695		1566							
8							1802	32	1834	8	2nd Half Paid NOV 28 1949	14668		917							
9										9	1st Half Paid MAY 29 1949	5789									
10							440	08	448	10	PAID IN FULL JUL 27 1948	7235									
11							1648	28	1676	11	PAID IN FULL OCT 6 1949	12553									
12							1604	28	1632	12	PAID IN FULL FEB 17 1949	1824		1632							
13							1078	18	1096	13	PAID IN FULL FEB 15 1949	1468		1096							
14										14											
15							352	06	358	15	PAID IN FULL JUL 27 1949	9235									
16							1100	20	1120	16	PAID IN FULL MAY 31 1949										
17							1100	20	1120	17	PAID IN FULL MAY 31 1949	8696		3360	3360						
18							1100	20	1120	18	PAID IN FULL MAY 31 1949										
19							1100	20	1120	19	PAID IN FULL MAY 31 1948	8328		1120							
20										20											

Cont on next page.

847

2928 12510

3020

919

MA 142 284 19206

38 80  
697 120  
49 200-547

Camp Blanche  
Kinne Camp  
Pointe Lake  
Mapase Beach  
East Shore











Assessment Roll and Tax List of Real Property in the Town of Bonto Lake

Table with columns: IN WHOSE NAME ASSESSED, TO WHOM TRANSFERRED, DESCRIPTION OF PROPERTY, TRUE AND FULL VALUATIONS, ASSESSED VALUATIONS, FINAL EQUALIZED VALUE. Includes handwritten entries for Mary E. Dorsey, Wm. N. Dorsey, N. F. Logan et al, and Vera Hilbury.

Cass County, Minnesota, for Taxes for the Year 1948.

Table with columns: SOLD FOR TAXES, VALUATIONS BY SCHOOL DISTRICTS AS EQUALIZED BY DEPARTMENT OF TAXATION, SPECIAL TAXES, TOTAL TAXES, PAID, WHEN PAID, March Settlement 1949, June Settlement 1949, Penalty, November Settlement 1949, Collections to First Monday in January 1950, Delinquent on First Monday in January 1950, Total Delinquent Tax and Penalty, REMARKS. Includes handwritten entries for 1948 tax payments and settlements.









Assessment Roll and Tax List of Real Property in the Town of Ponto Lake,

Cass County, Minnesota, for Taxes for the Year 1948.

Table with columns: IN WHOSE NAME ASSESSED, TO WHOM TRANSFERRED, DESCRIPTION OF PROPERTY, TRUE AND FULL VALUATIONS, ASSESSED VALUATIONS, VALUATIONS BY SCHOOL DISTRICTS AS EQUALIZED BY DEPARTMENT OF TAXATION, and REMARKS. Rows include property lots (e.g., Lot 3, Lot 1, Lot 2, Lot 5, Lot 6, Lot 7, Lot 8) and tax calculations for 1948.

REAL

Camp Blanche

Kennebec Camp

Ponto Point

Japanese Beach

East Shore

















Assessment Roll and Tax List of Real Property in the Town of Ponto Lake

Table with columns: IN WHOSE NAME ASSESSED, TO WHOM TRANSFERRED, DESCRIPTION OF PROPERTY, TRUE AND FULL VALUATIONS, ASSESSED VALUATIONS, FINAL EQUALIZED VALUE. Includes handwritten entries for Le Roy C. Baldwin, Richard G. + Dorothy M. Rieder, Louis Smith, Josephine Tibury, Joseph + Laura Daer, Bernhardt M. Stoker, Arthur A. Reuch, Margaret Reuch, Richard G. + Dorothy M. Rieder, Margaret Reuch.

Cass County, Minnesota, for Taxes for the Year 1948.

Table with columns: SOLD FOR TAXES, VALUATIONS BY SCHOOL DISTRICTS AS EQUALIZED BY DEPARTMENT OF TAXATION, SPECIAL TAXES, TOTAL TAXES, PAID, WHEN PAID, Number of Receipt, March Settlement 1949, June Settlement 1949, November Settlement 1949, Collections to First Monday in January 1950, Delinquent on First Monday in January 1950, Total Delinquent Tax and Penalty, REMARKS. Includes handwritten entries for 1-20, 1060, 162, 1222, 26924, 16861, 9437, 626.



















Assessment Roll and Tax List of Real Property in the Town of Ponto Lake,

Cass County, Minnesota, for Taxes for the Year 1948.

IN WHOSE NAME ASSESSED		TO WHOM TRANSFERRED		DESCRIPTION OF PROPERTY			TRUE AND FULL VALUATIONS					ASSESSED VALUATIONS						FINAL EQUALIZED VALUE	SOLD FOR TAXES	VALUATIONS BY SCHOOL DISTRICTS AS EQUALIZED BY DEPARTMENT OF TAXATION						TOTAL TAXES	PAID	WHEN PAID	Number of Receipt	March Settlement 1949	June Settlement 1949	Penalty	November Settlement 1949	Penalty	Collections to First Monday in January 1950	Penalty	Delinquent on First Monday in January 1950	Total Delinquent Tax and Penalty	REMARKS														
Subdivision	Sec. or Lot	Town or Block	Rng.	Number of Acres of Land	LAND Exclusive of Structures and Improvements	BUILDINGS and Other Structures	MACHINERY Permanently Attached to Real Estate	TOTAL True and Full Value	RURAL Homestead Up to \$4,000 20%	Over \$4,000 and Non-Homestead 33 1/3%	ALL OTHER Homestead Up to \$4,000 25%	Over \$4,000 and Non-Homestead 40%	MACHINERY Permanently Attached to Real Estate 33 1/3%	TOTAL ASSESSED VALUE	District No.	District No.	District No.			District No.	District No.	District No.	Tax including State Homestead	State Tax on Non-Homestead	SPECIAL TAXES															Month	Day	Year	\$	cts.	\$	cts.	\$	cts.	\$	cts.	\$	cts.	\$
Albert J. Smith				26 139 29 40				90		30				30							6.60	12																															
"				40				90		30				30							6.60	12																															
"				40				90		30				30							6.60	12																															
"				40				90		30				30							6.60	12																															
State of Minnesota																																																					
State of Minnesota																																																					
State of Minnesota																																																					
Fred Emmond				40			159	267		53			87	53							11.64	20																															
Basil M. Bremer				40			159	267		53			67	53							11.64	20																															
State of Minnesota																																																					
State of Minnesota																																																					
State of Minnesota																																																					
State of Minnesota																																																					
E.L. Giebert				40			198	198		66			66								14.50	26																															
				280			876	876		292			292								64.18	114																															

Camp Blanche  
Kimo Camp  
Ponto Point  
Kapanee Beach  
East Shore





Assessment Roll and Tax List of Real Property in the Town of Ponto Lake

IN WHOSE NAME ASSESSED	TO WHOM TRANSFERRED	DESCRIPTION OF PROPERTY					TRUE AND FULL VALUATIONS						TOTAL ASSESSED VALUE as Equalized by the Board of Review	FINAL EQUALIZED VALUE						
		SUBDIVISION	Sec. or Lot	Town or Block	Number of Acres of Land	No. School District	Indicate Homestead Yes or No	Indicate Agricultural Use or No	RURAL		ALL OTHER				MACHINERY Permanently Attached to Real Estate 33 1/3%	TOTAL ASSESSED VALUE				
									LAND Exclusive of Structures and Improvements	BUILDINGS and Other Structures	MACHINERY Permanently Attached to Real Estate	TOTAL True and Full Value					Homestead	Over \$4,000 and Non-Homestead	Homestead	Over \$4,000 and Non-Homestead
																	Up to \$4,000 20%	33 1/3%	Up to \$4,000 25%	40%
Mabel Middleton		NE 1/4 of NE 1/4 Lot 1	29	139	29	39.95	60					252	252	84	84					
Elias Haaland + Robert Schmelzer		NW 1/4 of NE 1/4			40			198				198	198	66	66					
"	"	SW 1/4 of NE 1/4			40			198				198	198	66	66					
Mabel Middleton		SE 1/4 of NE 1/4 " 2			34.90			252				252	252	84	84					
State of Minnesota		NE 1/4 of NW 1/4																		
Oscar + Vida M. Hanson		NW 1/4 of NW 1/4			40			265				265	265	53	53					
"		SW 1/4 of NW 1/4			40			265				265	265	53	53					
State of Minnesota		SE 1/4 of NW 1/4																		
Oscar + Vida M. Hanson		W. 200' of Lot 4			2			40	50			90	90	18	18					
State of Minnesota		NE 1/4 of SW 1/4																		
G.C. + Elva F. Marshall		Lot 4 NW 1/4 of SW 1/4 less W. 200'			30.20			125	50			175	175	35	35					
John J. Edwards		SW 1/4 of SW 1/4			46.75			312				312	312	104	104					
		SE 1/4 of SW 1/4																		
		NE 1/4 of SE 1/4 Lot 3			39.10			252				252	252	84	84					
Mabel Middleton		NW 1/4 of SE 1/4 lying E.			80			30	150			180	180	36	36					
Morris Kruckow		SW 1/4 of SE 1/4 2 St. Hy #54																		
Morris Kruckow		SE 1/4 of SE 1/4			40			200				200	200	40	40					
Norman L. + Marie Kruckow		That part of NW 1/4 of SE 1/4 lying W. of St. Hy #54						450	250			700	700	140	140					
					472.90			2839	500			3339	3339	375	488					

Cass County, Minnesota, for Taxes for the Year 1948.

SOLD FOR TAXES	VALUATIONS BY SCHOOL DISTRICTS AS EQUALIZED BY DEPARTMENT OF TAXATION						Tax including State Homestead	State Tax on Non-Homestead	SPECIAL TAXES	TOTAL TAXES	PAID	WHEN PAID	Number of Receipt	March Settlement 1949	June Settlement 1949	Penalty	November Settlement 1949	Penalty	Collections to First Monday in January 1950	Penalty	Delinquent on First Monday in January 1950	Total Delinquent Tax and Penalty	REMARKS
	District No.	District No.	District No.	District No.	District No.	District No.																	
	Rate	Rate	Rate	Rate	Rate	Rate																	
	Mills	Mills	Mills	Mills	Mills	Mills																	
1	84						18.46	32	18.78			1											PAID IN FULL MAY 31 1948 8339
2 SOLD FOR TAXES	66						14.50	26	14.76			2											
3 SOLD FOR TAXES	66						14.50	26	14.76			3											
4	84						18.46	32	18.78			4											PAID IN FULL MAY 31 1949 8339
5												5											
6												6											
7 SOLD FOR TAXES	H 53						11.64		11.64			7											11.64 9/280
8 SOLD FOR TAXES	H 53						11.64		11.64			8											11.64 9/280
9												9											
10 SOLD FOR TAXES	H 18						3.96		3.96			10											3.96
11												11											
12	H 35						7.70		7.70			12											PAID IN FULL FEB 2 8 1948 3760 7.70
13	104						22.86	40	23.26			13											PAID IN FULL MAY 3 2 1948 7415 23.26
14												14											
15												15											
16	84						18.46	32	18.78			16											PAID IN FULL MAY 31 1949 8339 18.78
17	H 36						7.92		7.92			17											PAID IN FULL MAY 31 1949 9304 7.92
18												18											
19	H 40						8.80		8.80			19											PAID IN FULL MAY 31 1949 9304 8.80
20	H 140						30.78		30.78			20											30.78
	H 489						a 18.968	188	191.56														87.54

Camp Blanchette  
 Kinnis Camp  
 Ponto Lake  
 Knapes Beach  
 East Shore



Assessment Roll and Tax List of Real Property in the Town of *Ponto Lake*

Cass County, Minnesota, for Taxes for the Year 1948.

Table with columns: IN WHOSE NAME ASSESSED, TO WHOM TRANSFERRED, DESCRIPTION OF PROPERTY, TRUE AND FULL VALUATIONS, ASSESSED VALUATIONS, and FINAL EQUALIZED VALUE.

Table with columns: VALUATIONS BY SCHOOL DISTRICTS AS EQUALIZED BY DEPARTMENT OF TAXATION, TAXES, PAID, WHEN PAID, Number of Receipt, March Settlement, June Settlement, November Settlement, Collections to First Monday, Delinquent on First Monday, Total Delinquent Tax and Penalty, and REMARKS.

Vertical text on the right margin: Camp Blanche, Kinne Camp, Ponto Point, Napanee Beach, East Shore.









Assessment Roll and Tax List of Real Property in the Town of Ponto Lake

Cass County, Minnesota, for Taxes for the Year 1948.

Table with columns: IN WHOSE NAME ASSESSED, TO WHOM TRANSFERRED, DESCRIPTION OF PROPERTY, TRUE AND FULL VALUATIONS, ASSESSED VALUATIONS, VALUATIONS BY SCHOOL DISTRICTS AS EQUALIZED BY DEPARTMENT OF TAXATION, TAXES, PAID, WHEN PAID, Number of Receipt, March Settlement 1949, June Settlement 1949, November Settlement 1949, Collections to First Monday in January 1950, Delinquent on First Monday in January 1950, Total Delinquent Tax and Penalty, REMARKS.









Assessment Roll and Tax List of Real Property in the \_\_\_\_\_ of \_\_\_\_\_,

IN WHOSE NAME ASSESSED	TO WHOM TRANSFERRED	DESCRIPTION OF PROPERTY				No. School District	Indicate Homestead Yes or No	Indicate Agricultural Yes or No	TRUE AND FULL VALUATIONS				ASSESSED VALUATIONS					FINAL EQUALIZED VALUE			
		SUBDIVISION	Sec. or Lot	Town or Block	Rng.				Number of Acres of Land	LAND Exclusive of Structures and Improvements	BUILDINGS and Other Structures	MACHINERY Permanently Attached to Real Estate	TOTAL True and Full Value	RURAL		ALL OTHER			MACHINERY Permanently Attached to Real Estate	TOTAL ASSESSED VALUE	Total Assessed Value as Equalized by the Board of Review
														Acres	100ths	Homestead Up to \$4,000 20%	Over \$4,000 and Non-Homestead 33 1/3%				
									Dollars	Dollars	Dollars	Dollars	Dollars	Dollars	Dollars	Dollars	Dollars				
		1																			
		2																			
		3																			
		4																			
		5																			
		6																			
		7																			
		8																			
		9																			
		10																			
		11																			
		12																			
		13																			
		14																			
		15																			
		16																			
		17																			
		18																			
		19																			
		20																			

Cass County, Minnesota, for Taxes for the Year 1948.

SOLD FOR TAXES	VALUATIONS BY SCHOOL DISTRICTS AS EQUALIZED BY DEPARTMENT OF TAXATION						Tax including State Homestead	State Tax on Non-Homestead	SPECIAL TAXES	TOTAL TAXES	PAID	WHEN PAID	Number of Receipt	March Settlement 1949	June Settlement 1949	November Settlement 1949	Penalty	Collections to First Monday in January 1950	Penalty	Delinquent on First Monday in January 1950	Total Delinquent Tax and Penalty	REMARKS
	District No.	District No.	District No.	District No.	District No.	District No.																
	Rate	Rate	Rate	Rate	Rate	Rate																
	Mills	Mills	Mills	Mills	Mills	Mills																
1																						
2																						
3																						
4																						
5																						
6																						
7																						
8																						
9																						
10																						
11																						
12																						
13																						
14																						
15																						
16																						
17																						
18																						
19																						
20																						

*See next page*

Camp Blanche  
Kimo Camp  
Point Point  
Mapase Beach  
East Shore











Assessment Roll and Tax List of Real Property in the Town of Ponto Lake

Cass County, Minnesota, for Taxes for the Year 1948.

Camp Blanche  
Kline Camp  
Ponto Point  
Napane Beach

Ada Pine Beach  
East Shore

IN WHOSE NAME ASSESSED	TO WHOM TRANSFERRED	DESCRIPTION OF PROPERTY					TRUE AND FULL VALUATIONS											FINAL EQUALIZED VALUE		
		SUBDIVISION	Sec. or Lot	Town or Block	Rng.	Number of Acres of Land	LAND Exclusive of Structures and Improvements	BUILDINGS and Other Structures	MACHINERY Permanently Attached to Real Estate	TOTAL True and Full Value	RURAL			ALL OTHER			MACHINERY Permanently Attached to Real Estate		TOTAL ASSESSED VALUE	Total Assessed Value as Equalized by the Board of Review
											Acres	100ths	Homestead Up to \$4,000 20%	Over \$4,000 and Non-Homestead 33 1/3%	Homestead Up to \$4,000 25%	Over \$4,000 and Non-Homestead 40%				
Arthur O. + Luella R. Anderson		Napane Beach	21				20	76	96			35			52 7/8					
"		Napane Beach	22				20	151	171			57			57 7/8					
							40	227	267			89			89					

SOLD FOR TAXES	VALUATIONS BY SCHOOL DISTRICTS AS EQUALIZED BY DEPARTMENT OF TAXATION						Tax including State Homestead	State Tax on Non-Homestead	SPECIAL TAXES	TOTAL TAXES	PAID	WHEN PAID	Number of Receipt	March Settlement 1949	June Settlement 1949	Penalty	November Settlement 1949	Penalty	Collections to First Monday in January 1950	Penalty	Delinquent on First Monday in January 1950	Total Delinquent Tax and Penalty	REMARKS
	District No.	District No.	District No.	District No.	District No.	District No.																	
	Rate	Rate	Rate	Rate	Rate	Rate																	
	Mills	Mills	Mills	Mills	Mills	Mills																	
						\$ cts.	\$ cts.	\$ cts.	\$ cts.		Month Day Year		\$ cts.	\$ cts.	\$ cts.	\$ cts.	\$ cts.	\$ cts.	\$ cts.	\$ cts.	\$ cts.		
1							752	12	764		2nd Half Paid SEP 13 1949	12274		382		382							
2							1338	22	1360		2nd Half Paid SEP 13 1949 1st Half Paid MAY 28 1949	5445		680		680							
15							NA		89					1062		1062							





Assessment Roll and Tax List of Real Property in the \_\_\_\_\_ of \_\_\_\_\_

Camp Blanche  
Kinne Camp  
Ponto Point  
Napasee Beach  
East Shore

IN WHOSE NAME ASSESSED	TO WHOM TRANSFERRED	SUBDIVISION	DESCRIPTION OF PROPERTY			No. School District	Indicates Homestead Yes or No	Indicates Agricultural Use Yes or No	TRUE AND FULL VALUATIONS					ASSESSED VALUATIONS					FINAL EQUALIZED VALUE			
			Sec. or Lot	Town or Block	Rng.				Number of Acres of Land	LAND Exclusive of Structures and Improvements	BUILDINGS and Other Structures	MACHINERY Permanently Attached to Real Estate	TOTAL True and Full Value	RURAL Homestead Up to \$4,000 20%	Over \$4,000 and Non-Homestead 33 1/3 %	ALL OTHER Homestead Up to \$4,000 25%	Over \$4,000 and Non-Homestead 40%	MACHINERY Permanently Attached to Real Estate 33 1/3 %		TOTAL ASSESSED VALUE	Total Assessed Value as Equalized by the Board of Review	
		Plot of East Shore																				
Marlin + Marion D. Woboril			1	20			No		12				4		4 na							
"	"		2	21			"		12				4		4 na							
"	"		3	22			"		12				4		4 na							
"	"		4	23			"		12				4		4 na							
Ralph Henry Burwill			5	24			"		12				4		4 na							
"	"		6	25			"		12				4		4 na							
John + Bessie Jones			7	26			"		12				4		4 na							
"	"		8	27			"		12				4		4 na							
"	"		9	28			"		12				4		4 na							
Ellen J + Rosetta E. Snodgrass			10	29			"		12				4		4 na							
"	"		11	30			"		12				4		4 na							
"	"		12	31			"		12				4		4 na							
"	"		13	32			"		12				4		4 na							
"	"		14	33			"		12				4		4 na							
Adolph A. Uhlig			15	34			"	14	160	174		58		58 na								
"	"		16	35			"	12		12		4		4 na								
Leon O. Smith			17	36			"	14	160	174		58		58 na								
"	"		18	37			"	12		12		4		4 na								
Ward W. + Ellen G. Boyd			19	38			"	14	160	174		58		58 na								
"	"		20	39			"	12		12		4		4 na								
								246	480	726		242		242								

Cass County, Minnesota, for Taxes for the Year 1948.

SOLD FOR TAXES	VALUATIONS BY SCHOOL DISTRICTS AS EQUALIZED BY DEPARTMENT OF TAXATION						Tax including State Homestead	State Tax on Non-Homestead	SPECIAL TAXES	TOTAL TAXES	PAID	WHEN PAID	Number of Receipt	March Settlement 1949	June Settlement 1949	November Settlement 1949	Penalty	Collections to First Monday in January 1950	Penalty	Delinquent on First Monday in January 1950	Total Delinquent Tax and Penalty	REMARKS
	District No.	District No.	District No.	District No.	District No.	District No.																
								94	02		96	1 PAID IN FULL JUN 13 1949	7280									
								94	02		96	2 PAID IN FULL JUN 13 1949	7280									
								94	02		96	3 PAID IN FULL JUN 13 1949	7280									
								94	02		96	4 PAID IN FULL JUN 13 1949	7280									
								94	02		96	5 PAID IN FULL MAY 31 1949	7410		96							
								94	02		96	6 PAID IN FULL MAY 31 1949	7410		96							
								94	02		96	7 PAID IN FULL APR 18 1949	4697		96							
								94	02		96	8 PAID IN FULL APR 18 1949	4697		96							
								94	02		96	9 PAID IN FULL APR 18 1949	4697		96							
								94	02		96	10 PAID IN FULL MAY 31 1949										
								94	02		96	11 PAID IN FULL MAY 31 1949	5336		480							
								94	02		96	12 PAID IN FULL MAY 31 1949										
								94	02		96	13 PAID IN FULL MAY 31 1949										
								94	02		96	14 PAID IN FULL MAY 31 1949										
								1362	22		1384	15 PAID IN FULL MAY 31 1949	8692		1480							
								94	02		96	16 PAID IN FULL MAY 31 1949										
								1362	22		1384	17 PAID IN FULL MAY 31 1949	9316		1384							
								94	02		96	18 PAID IN FULL MAY 31 1949	5316		96							
								1362	22		1384	19 PAID IN FULL FEB 17 1949	2035	1480								
								94	02		96	20 PAID IN FULL FEB 17 1949										
								na	56.14		57.84			1480	3920					384		

Ada Pine Beach









