

ASSESSMENT & TAX LIST  
Ponto Lake  
1953









TABULAR SCHEDULE OF VALUATIONS,

RATES AND TAXES

LEVIED IN THE Town OF Ponto Lake

COUNTY OF CASS, STATE OF MINNESOTA

NAME OF OWNER

School District No.	VALUATION BY SCHOOL DISTRICTS				RATE OF STATE TAXES		RATE OF COUNTY TAXES						RATE OF TOWN TAXES										RATE OF								
	Agri-cultural Lands	Non-Agri-cultural Lands	Personal Property	Total Value of all Property except Money and Credits	Total Rate of State Tax	Total Rate of County Tax	Rev.	R. & D.	Welfare	Bonds and Int.	P. & B.	Total Rate of County Tax	Rev.	R. & D.	Drag Tax	State Loan	Deficiency	Tuition	Transportation	Local	Special	State Loan	Deficiency	Tuition	Transportation	Local	Special	State Loan	Deficiency	Tuition	Transportation
# 30	25323	10007	9731	45721	H. 5.28	107.41	28.3	15.9	50.52	10.69	2	6.6	6	1	5	5	23.6	1	25	70.8	70.8	2	2	98.8	123.8	235.09	260.09	25323	63308	179287	5065
					N. H. 4.66																										
					9.94																										

Assessed Value	Rural	All Other	Personal Property	Total
Homestead	13828	1606		15434
Non-Homestead	13634	6922	9731	30287
Total	27462	8528	9731	45721

SCHOOL TAXES				LOCAL 1 MILL AND SPECIAL SCHOOL TAXES BY DISTRICTS										ALL OTHER TAXES							
Total Rate of Sch'l Tax	Total Rate of all Taxes	Local 1-Mill	Special	State Loan	Def. Jump	Local 1-Mill	Special	State Loan	Def. Jump	Tuition	Transportation	Local 1-Mill	Special	State Loan	Deficiency	Tuition	Transportation	FUNDS	Rate	Amounts	
98.8	235.09	25323	63308	179287	5065	25323	63308	179287	5065			25323	63308	179287	5065			State - Non-Homestead		14104	
123.8	260.09	20401	101980	144488	4080	20401	101980	144488	4080			20401	101980	144488	4080			State - Homestead		24141	
		45722	165298	323715	9145	45722	165298	323715	9145			45722	165298	323715	9145			County Revenue		129398	
																			County Road and Bridge		72695
																			County Welfare		230987
																			Bonds and Interest		48875
																			P. & B. Sinking		9144
																					491099
																			Town Revenue		30176
																			Town Road and Bridge		27432
																			Town Drag		4572
																			Town State Loan		
																			Oil		22860
																			Telephone		22860
																					107910
																			School Local 1 Mill		4572
																			School Special		165298
																			School State Loan		
																			Deficiency		323715
																			Tuition		9145
																			Transportation		
																					502720

Total Taxes Real Estate 8823.06  
 Pers. Prop. 2576.18  
 Total 11399.74

Total Levy, \$ 11,399.74

Total Number of Acres 12,163.36  
 State of Minnesota, ss.

I, D. C. Peterson, Auditor of said County and State aforesaid, do hereby certify that the foregoing is a true and correct Schedule, showing the valuation of all the taxable property, in the Town of Ponto Lake, in said County, the several rates of Taxation and Totals of the several Tax Funds levied thereon for the year A. D. 1953.

Witness my hand and official seal, this 7 day of December, A. D. 1953.

SEAL

D. C. Peterson, County Auditor.  
By Helen Billberg, Deputy



Assessment of 1

COLLECTIONS OF TAXES OF 1953 *Town* OF *Ponte Lake*, CASS COUNTY, MINNESOTA

FUNDS	MARCH SETTLEMENT 1953	JUNE SETTLEMENT 1953	NOV. SETTLEMENT 1953	Amount Collected from Nov. 1952 to First Monday in Jan. 1953	REDUCTIONS	Total Reductions and Collected	BALANCE UNCOLLECTED	ADDITIONS	Total Uncollected to First Monday in January, 1953
State--Non-Homestead	4222	6513	2643	—					
State--Homestead	5102	12506	5856	57					
County Revenue	27348	67028	27101	306					
County Road and Bridge	15365	37659	15227	172					
County Welfare	48820	119656	48380	546					
County Bond and Interest	10330	25319	10237	115					
<i>R. &amp; B. Sinking</i>	1933	4737	1915	22					
Town Revenue	6378	15632	6320	71					
Town Road and Bridge	5798	14211	5746	65					
Town Drain	966	2368	958	11					
Town State Loan									
<i>Fire</i>	4832	11842	4788	54					
<i>Telephone</i>	4832	11842	4788	54					
School Local 1 Mill	966	2368	958	11					
School Special	44994	77744	33216	268					
School State Loan									
Deficiency	68467	167687	67801	765					
Tuition									
Transportation	1933	4737	1915	22					
	252236	582057	237049	2539					

	School District No.	LOCAL 1 MILL	SPECIAL	STATE LOAN	<i>Deficiency</i>	<i>Transport.</i>	TOTALS
MARCH SETTLEMENT	<i>Q#30</i> <i>R#30</i>	133 833	3323 41671		9811 59006	266 1667	13133 103777
JUNE SETTLEMENT	<i>Q#30</i> <i>R#30</i>	966 1419 749	44794 40480 37464		61417 114639 53050	1933 3239 1499	116310 159976 92762
NOVEMBER SETTLEMENT	<i>Q#30</i> <i>R#30</i>	2368 587 371	77744 14668 18578		167687 41539 26262	4737 1173 742	252738 57967 45723
NOVEMBER to JANUARY	<i>Q#30</i>	958 11	33216 268		67801 765	1915 22	103890 1066
ADDITIONS		11	268		765	22	1066
REDUCTIONS							

CAMP BLANCHÉ  
Kinné Camp  
Ponte Lake  
Naponee Beach  
Plat of East Shore's Pine Beach Park























Long Lake

Lot 9

Sup 139 R. 29 Sec 4  
Lots 788

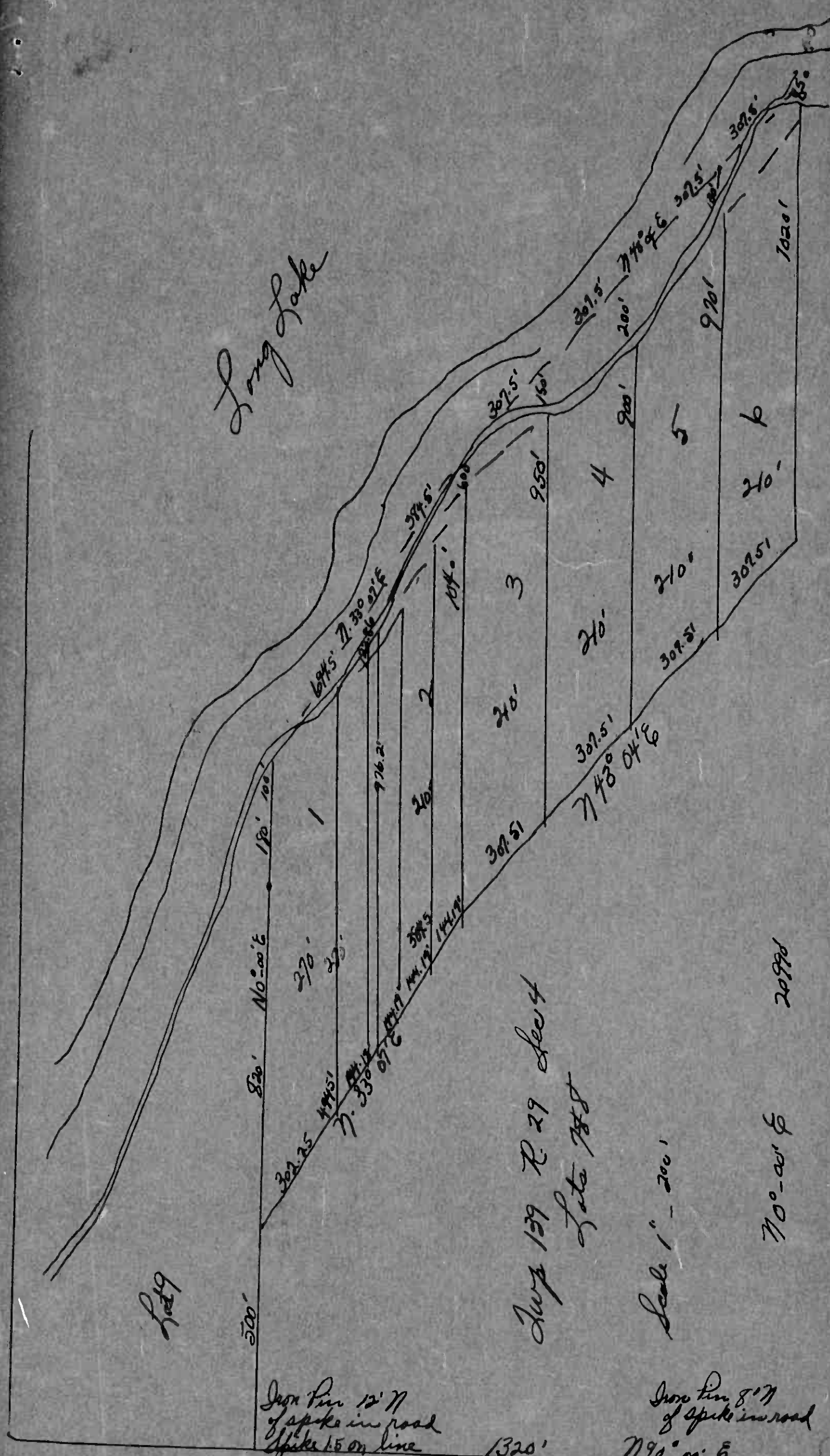
Scale 1" = 200'

710°-00' E 2099'

Iron Pin 12" N  
of spike in road  
Spike 15 on line

Iron Pin 8" N  
of spike in road  
790°-00' E

1320'





















Assessment Roll and Tax List of Real Property in the Town of Pointe Lake

Form 567 (53) MLLS-STATE BOARD, MINNAPOLIS

IN WHOSE NAME ASSESSED	TO WHOM TRANSFERRED	DESCRIPTION OF PROPERTY				TRUE AND FULL VALUATIONS				ASSESSED VALUATIONS					FINAL EQUALIZED VALUE		
		SUBDIVISION	Sec. of Lot	Town or Block	Number of Acres of Land	LAND Exclusive of Structures and Improvements	BUILDINGS and Other Structures	MACHINERY Permanently Attached to Real Estate	TOTAL True and Full Value	RURAL		ALL OTHER		MACHINERY Permanently Attached to Real Estate		TOTAL ASSESSED VALUE	Total Assessed Value as Equalized by the Board of Review
										Homestead Up to \$4,000 20%	Over \$4,000 and Non-Homestead 33 1/3%	Homestead Up to \$4,000 25%	Over \$4,000 and Non-Homestead 40%				
Mary E. Darrey		NE 1/4 of NE 1/4			8 137.27												
Wm. H. Darrey		NW 1/4 of NE 1/4			40												
State of Minnesota		SW 1/4 of NE 1/4			40												
Mary E. Darrey		SE 1/4 of NE 1/4			40												
Elmer & Ada Doty		NE 1/4 of NW 1/4			40												
Verl Silbury Jr		NW 1/4 of NW 1/4 Lot 1			36.25												
State of Minnesota		SW 1/4 of NW 1/4			40												
		SE 1/4 of NW 1/4															
Vern D. & Elva V. Keep		NE 1/4 of SW 1/4			40												
Vern & Elva Keep		NW 1/4 of SW 1/4			40												
Lela Lee Reynolda		SW 1/4 of SW 1/4			40												
		SE 1/4 of SW 1/4			40												
Mary E. Darrey		NE 1/4 of SE 1/4			40												
State of Minnesota		NW 1/4 of SE 1/4															
		SW 1/4 of SE 1/4															
Mary E. Darrey		SE 1/4 of SE 1/4			40												

2196 25

Cass County, Minnesota, for Taxes for the Year 1953.

SOED FOR TAXES	VALUATIONS BY SCHOOL DISTRICTS AS EQUALIZED BY DEPARTMENT OF TAXATION						Tax including State Homestead	State Tax on Non-Homestead	SPECIAL TAXES	TOTAL TAXES	PAID	WHEN PAID	Number of Receipts	March Settlement 1954	June Settlement 1954	November Settlement 1954	Penalty	Collections to First Monday in January 1955	Penalty	Delinquent on First Monday in January 1955	Total Delinquent Tax and Penalty	REMARKS
	District No. 20	District No. 20	District No. 20	District No. 20	District No. 20	District No. 20																
	Rate 2.0 Mills	Rate 2.0 Mills	Rate 2.0 Mills	Rate 2.0 Mills	Rate 2.0 Mills	Rate 2.0 Mills																
1	H 24						564		564	1	PAID IN FULL	MAY 31 1954										
2	H 32						752		752	2	PAID IN FULL	MAY 31 1954										
3										3												
4	H 37						728		728	4	PAID IN FULL	MAY 31 1954										
5										5												
6	SOLD FOR TAXES H 20						470		470	6												
7	SOLD FOR TAXES H 24						564		564	7	PAID IN FULL	JUL 22 1954										470 517
8	SOLD FOR TAXES 45						1058	20	1078	8												
9										9												
10										10												
11	SOLD FOR TAXES H 24						564		564	11												
12	SOLD FOR TAXES H 40						940		940	12												
13	36						846	16	862	13	PAID IN FULL	JUL 21 1954										
14	30						706	14	720	14	PAID IN FULL	JUL 21 1954										
15										15												
16	H 24						564		564	16	PAID IN FULL	MAY 31 1954										
17										17												
18										18												
19	H 40						940		940	19	PAID IN FULL	MAY 31 1954										
20	H 259 111 370						8696	50	8746	20												

CAMP BLANCHE  
Kline Camp  
Pointe Point  
Naponee Beach  
Plat of East Shore Pine Beach































# WHEELER LUMBER BRIDGE & SUPPLY CO.

3340 REPUBLIC AVENUE - WEST 9-7854 - ST. LOUIS PARK, MINN.



Low Cost — Quick, Simple Installation — Proven Permanency

In taking this Judg.  
Take:

"All of Lot 8 lying W. of  
Rd which runs N & S  
thru Lot 8. ~~Lot 150 x 300~~  
Now known as Lots 1 to 8  
& Outlet A Haley's Haven











Assessment Roll and Tax List of Real Property in the Town of Ponto Lake

IN WHOSE NAME ASSESSED	TO WHOM TRANSFERRED	DESCRIPTION OF PROPERTY				TRUE AND FULL VALUATIONS										FINAL EQUALIZED VALUE	
		SUBDIVISION	Sec. of Lot	Town or Block	Number of Acres of Land	LAND Exclusive of Structures and Improvements	BUILDINGS and Other Structures	MACHINERY Permanently Attached to Real Estate	TOTAL True and Full Value	RURAL		ALL OTHER		MACHINERY Permanently Attached to Real Estate	TOTAL ASSESSED VALUE		Total Assessed Value as Equalized by the Board of Review
										Homestead Up to \$4,000 20%	Over \$4,000 and Non-Homestead 33 1/3%	Homestead Up to \$4,000 25%	Over \$4,000 and Non-Homestead 40%				
Paul B. & Francis E. Loomis		Lot 1, "Home Camp" 16 139 29			19 50 30												
Robert E. Null		NW 1/4 of NE 1/4 - less 7,400' of E. 488'			35 52												
"		SE 1/4 of NE 1/4 less 2 acres			38												
A. W. Siltman		2 acs. of SE 1/4 of NE 1/4			2												
Jacob Tschida		NE 1/4 of NW 1/4			40												
"		NW 1/4 of NW 1/4			40												
"		SW 1/4 of NW 1/4			40												
"		SE 1/4 of NW 1/4			40												
Jacob W. & Helen Hullgraf		77,400' of E. 488' of SW 1/4 of NE 1/4			448												
Mike Smith		NE 1/4 of SW 1/4			40												
"		NW 1/4 of SW 1/4			40												
"		SW 1/4 of SW 1/4			40												
"		SE 1/4 of SW 1/4			40												
Maggie Smith		NE 1/4 of SE 1/4			40												
"		NW 1/4 of SE 1/4			40												
"		SW 1/4 of SE 1/4			40												
"		SE 1/4 of SE 1/4			40												

(Continued on next page)

57950

Cass County, Minnesota, for Taxes for the Year 1953.

SOLD FOR TAXES	VALUATIONS BY SCHOOL DISTRICTS AS EQUALIZED BY DEPARTMENT OF TAXATION						Tax including State Homestead	State Tax on Non-Homestead	SPECIAL TAXES	TOTAL TAXES	PAID	WHEN PAID	Number of Receipt	March Settlement 1954	June Settlement 1954	Penalty	November Settlement 1954	Penalty	Collection to First Monday in January 1955	Penalty	Delinquent on First Monday in January 1955	Total Delinquent Tax and Penalty	REMARKS
	District No.	District Rate	District No.	District Rate	District No.	District Rate																	
	Dollars	Mills	Dollars	Mills	Dollars	Mills																	
1	H 43						10.10		10.10		PAID IN FULL	FEB 27 1954	4440	10.10									
2																							
3	H 46						10.82		10.82		2nd Half Paid	OCT 30 1954											
4	H 50						11.76		11.76		1st Half Paid	MAY 31 1954	12069										
5																							
6	H 46						10.82		10.82		PAID IN FULL	MAY 31 1954											
7	H 57						13.40		13.40		PAID IN FULL	MAY 31 1954											
8	H 44						10.34		10.34		PAID IN FULL	MAY 31 1954											
9	H 38						8.94		8.94		PAID IN FULL	MAY 31 1954											
10	H 88						20.68		20.68		PAID IN FULL	MAY 31 1954	6026										
11	H 35						8.22		8.22		PAID IN FULL	APR 1 1954											
12	H 62						14.58		14.58		PAID IN FULL	APR 1 1954											
13	H 68						15.98		15.98		PAID IN FULL	APR 1 1954											
14	H 76						17.86		17.86		PAID IN FULL	APR 1 1954	4934										
15																							
16	H 39						9.16		9.16		PAID IN FULL	APR 1 1954											
17	H 65						15.28		15.28		PAID IN FULL	APR 1 1954											
18	H 171						53.14		53.40		PAID IN FULL	APR 1 1954											
19	H 38						8.94		8.94		PAID IN FULL	APR 1 1954											
20																							
	H 96						26.52		240.02														
	55								266.54														
	1021																						

ONE Karna Camp Ponto Lake Neptune Beach Plat of East Shore Pine Beach



















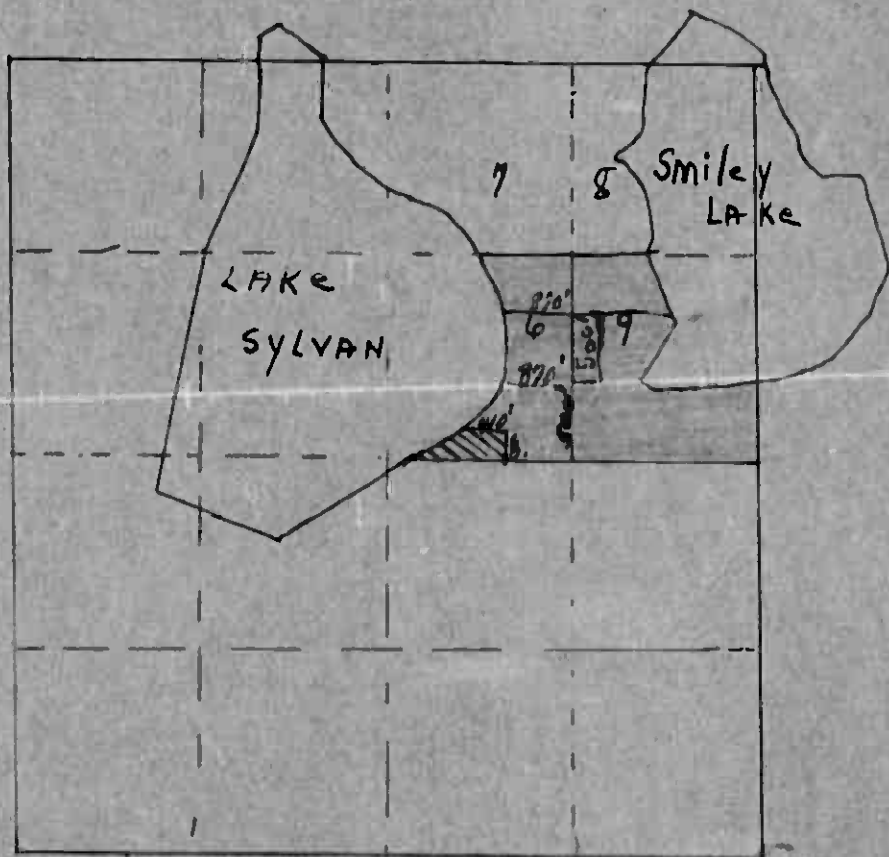





Ponto Lake.

Govt. Lots 6 + 9

Sec. 20-139-29



 5100' x W410' in SW  
 corner of Lot 6  
 Bert + Aline Persons.

X - (870' x 500' of Lots 6 + 9)  
 10 ac. of S. 1000' of Lots 6 + 9  
 Nick J. Laub

X - S. 1000' of Lots 6 + 9 less  
 10 acres + less S. 100' of W. 410'  
 G. Dreckleton

X - Lots 6 + 9 less S. 1000' (or  
 N 320' of Lots 6 + 9) L. E. Minnette



























































Assessment Roll and Tax List of Real Property in the Town of Ponto Lake

IN WHOSE NAME ASSESSED	TO WHOM TRANSFERRED	SUBDIVISION	Sec. of Lot	Town or Block	Rng.	Number of Acres of Land	No. School District	Indicate Homestead Tax or No.	TRUE AND FULL VALUATIONS					ASSESSED VALUATIONS					FINAL EQUALIZED VALUE	
									LAND Exclusive of Structures and Improvements	BUILDINGS and Other Structures	MACHINERY Permanently Attached to Real Estate	TOTAL True and Full Value	RURAL		ALL OTHER		MACHINERY Permanently Attached to Real Estate 33 1/3 %	TOTAL ASSESSED VALUE		Total Assessed Value as Equalized by the Board of Review
													Homestead Up to \$4,000 20%	Over \$4,000 and Non-Homestead 33 1/3 %	Homestead Up to \$4,000 25%	Over \$4,000 and Non-Homestead 40%				
Metzger Clothing Co.		Lot 1	33	139	29	38	30													
Joyce E. Hangan, et al		Lot 2				33	63													
"						40														
Donald J. Lindquist & Derwood A. Dorn		E. 80' of W. 610' of N. 500' of Lot 2				71														
A. A. Beckm		Lot 3				47	20													
Ernest Siltman						40														
H. Lauritz "Hansen" 1/8, Harry E. LeMay 1/8 & Velma Strayer 1/8		Lot 4				19	12													
State of Minnesota		Lot 5																		
Beatrice E. Wedge		Lot 6				29	50													
Leslie & Esther Shepard						40														
J. J. & Helen E. Armstrong		E. 80' of W. 160' of N. 500' of Lot 2				91														
Leslie & Esther Shepard						40														
"						40														
"						40														
"						40														
Continued on next page						45	75													

Cass County, Minnesota, for Taxes for the Year 1953.

SOLD FOR TAXES	VALUATIONS BY SCHOOL DISTRICTS AS EQUALIZED BY DEPARTMENT OF TAXATION						Tax including State Homestead	State Tax on Non-Homestead	SPECIAL TAXES	TOTAL TAXES	PAID	WHEN PAID	Number of Receipts	March Settlement 1954	June Settlement 1954	November Settlement 1954	Penalty	Collected to First Monday in January 1955	Penalty	Delinquent on First Monday in January 1955	Total Delinquent Tax and Penalty	REMARKS
	District No.	District No.	District No.	District No.	District No.	District No.																
	Rate	Rate	Rate	Rate	Rate	Rate																
1	176						41.38	82	42.20	1	PAID IN FULL	APR 29 1954	5639		42.20							
2										2												
3							53.84	72	54.56	3	2nd Half Paid	SEP 15 1954										
4	H 93						21.86		21.86	4	1st Half Paid	MAY 14 1954	5318		38.24							89.21
5	BOLD FOR TAXES 108						25.38	50	25.88	5	1st Half Paid	SEP 15 1954	13345									
6	134						21.50	62	32.12	6	PAID IN FULL	JUN 24 1954	8557									25.88
7	H 74						17.40		17.40	7	PAID IN FULL	MAY 31 1954	12117		32.12							
8	H 12						2.82		2.82	8	PAID IN FULL	MAY 31 1954	12115		17.40							
9	96						22.56	44	23.00	9	PAID IN FULL	MAR 18 1954	4893		2.82							
10										10												
11										11												
12										12												
13	H 49						11.52		11.52	13	PAID IN FULL	AUG 19 1954	12465									
14	H 32						7.52		7.52	14	1st Half Paid	MAY 31 1954	7638		3.76							11.52
15	H 46						10.82		10.82	15	2nd Half Paid	OCT 30 1954	16100									3.76
16	H 32						7.52		7.52	16	PAID IN FULL	MAY 31 1954	12114		10.82							
17	H 32						7.52		7.52	17	1st Half Paid	MAY 31 1954	16160									
18	H 110						25.86		25.86	18	2nd Half Paid	OCT 30 1954	7638		26.88							3.76
19	H 52						12.22		12.22	19	1st Half Paid	MAY 31 1954										
20	H 53						53.84		53.84	20	2nd Half Paid	OCT 30 1954										
	514						245.88	3.10	248.98													
	1046						279.72		279.72													

ANKHE Klumbe Camp Ponto Pointe Japanese Beach Plat of East Shore Pine Beach











































































































