

PINE LAKE
1925 - TAX LIST

1/10/26 - a/c Sam Gilbertson pers. prop. tax
 " - a/c Jonas Buchheit " " "
 7/25/26 - a/c John Stralichka " " "

Ass Debit
 10.93 ✓
 7.00 ✓
 3.17 ✓
 ✓

Auditor's Office, Cass County, Minnesota.

I, A. A. CATER, Auditor of Cass County and State of Minnesota,
 do hereby Certify that the following is a correct list of the taxes levied on the Real and Personal
 Property in the Town Pine Lake in said County, for the year 1925.

Witness my hand and official seal this 31st day of December 1925.

(SEAL) A. A. Cater
 County Auditor.

Treasurer's Office, Cass County, Minnesota.

Received this, the first Monday, being the 7th day of January,
 A. D. 1926, of A. A. CATER, Auditor of Cass County, Minnesota, the Tax List of all taxable
 Real and Personal Property in the Town of Pine Lake
 in said County, for the year 1925, as specified above, and amounting to Six thousand of
six hundred and forty one dollars and fifty six cents DOLLARS.

W. T. McKewen
 County Treasurer.

Office of County Treasurer, Cass County, Minnesota.

To A. A. CATER, County Auditor.

Sir: I herewith return to you the Tax List for the Town
Pine Lake in said County, for
 the year 1926, heretofore received from you. I certify that I have compared the same with the
 duplicate receipts in your office, and have written opposite the amount of each tax so receipted the
 words "One Half Paid," or "Paid in Full," as the case may be, and the number of my receipt
 given in discharge of said tax, and each tract or lot of Real Property against which the taxes
 remain unpaid is delinquent for said year.

W. T. McKewen
 County Treasurer.

Auditor's Office, Cass County, Minnesota.

I hereby certify that on the first Monday in January, 1926, I received of
 W. T. MCKEOWN, County Treasurer, the Tax List of the Town
Pine Lake in said County, for the year 1925 and that
 I have compared the said list with the statements receipted for by said County Treasurer,
 which are on file in my office, and that each tract or lot of Real property therein against
 which the taxes, or any part thereof remains unpaid, are delinquent for said year.

I further certify that the following statement of taxes collected, distributed and unpaid or
 cancelled are true and correct:

(SEAL) A. A. Cater
 County Auditor.

Ar. val. per ac. - 84.52

Levied in the Town of Town Lake
TABULAR SCHEDULE OF VALUATIONS,

No. School District	Valuation of Money and Credits Dollars	VALUATION BY SCHOOL DISTRICTS					RATE OF STATE TAXES					RATE OF COUNTY TAXES										RATE OF TOWN, CITY OR VILLAGE TAXES									
		Money and Credits Tax	Value of Lands other than Town Lots Including Structures Dollars	Value of Town and City Lots Including Structures Dollars	Personal Property Dollars	Total Value of all Property Money and Credits Dollars	State Rev.	State Sch'l	Terr. Ind. Rel. Ed.	Mun. Gen'l Prop.	Total Rate of State Tax	Co. Rec.	R. & B.	Co. Post	Co. Bond and Int.	Co. Sinking	Co. Bldg. Maint.	Rd. Maint.	Total Rate of County Tax	Town Rev.	Town R. & B.	1 Mill Drain.	Town State Loan	Town Bldg.	Fire Patrol	Phone	Total Rate of Town, City or Village Tax				
																												Mills	Mills	Mills	Mills
Ann.	800	240	68368		14988	69866	4.2	1.23	.05	.03	.773	5	8	7.09	9.11	2	31.2	358	15	1	3.64	5	5			33.2					
Total	800	240																													

RATES AND TAXES
 Cass County, State of Minnesota

RATE OF SCHOOL TAXES		TAXES LEVIED												
Local 1 Mill	Special	LOCAL 1 MILL AND SPECIAL SCHOOL TAXES BY DISTRICTS				Total School Tax	ALL OTHER TAXES							
		Local 1 Mill	Special	Interest	Sinking		FUNDS	Rate	AMOUNTS					
1.0007	4.67	1.45			37.19	109.34	6987	710087	37627	10131	259834	State Revenue	6.42	44854
												State School	1.73	8594
												Teacher's Insurance and Retirement Fund	.05	349
												Mun. Gen'l Hoop.	.02	210
												County Revenue	5	84933
												County Road and Bridge	8	55893
												County Poor	7.09	49532
												County Road and Interest		
												County Sinking	9.11	63648
												County Building		
												Rd. Maintenance		13972
												Town Revenue	3.68	75012
												Town Road and Bridge	15	104799
												Town 1 Mill Draining	1	6987
												Town State Loan	3.64	75431
												Town Building		
												Town Fire Patrol	5	34933
												Phone	5	34933
												School Local 1 Mill	1	6987
												School Special	20.07	710087
												School Interest	4.67	37627
												School Sinking	1.45	10131
												School		
												Money and Credits		240
														7641.56

Total No. Acres 15120.78 Total Levy, \$ 7641.56 Book Footings, \$ 7640.90

I, A. CATER, Auditor of said County and State of Minnesota, do hereby certify that the foregoing is a true and correct schedule, showing the valuation of all the taxable property in the Town of Town Lake in said County, year A. D. 1925. Witness my hand and official seal this 31st day of March, A. D. 1925.



[Signature]
 County Auditor.

Bk Footings 664.60

Tax List of Real Property in the Town of Pine Lake

Cass County, Minnesota, for Taxes for the Year 1925.

IN WHOSE NAME ASSESSED	TO WHOM TRANSFERRED	Sold for Taxes	SUB-DIVISION	Sec. or Lot	Town or Block	No. of Acres		VALUATION	No. School Dist.	SCHOOL DISTRICT			Highway Ditch No.	Ditch No.	Ditch No.	Ditch No.	TOTAL TAXES	PAID	WHEN PAID	Number of Receipt	March Settlement	June Settlement	Penalty	November Settlement	Penalty	Collections to First Monday in January	Penalty	Delinquent on First Monday in January	REMARKS
						Acres	100's			No. ... Rate	No. ... Rate	No. ... Rate																	
Leech Lake Land & Investment Co.			NE 1/4 of NE 1/4	Lot 1	1		1940									1760	✓												
			NW 1/4 of NE 1/4																										
			SW 1/4 of NE 1/4																										
			SE 1/4 of NE 1/4																										
			NE 1/4 of NW 1/4																										
			NW 1/4 of NW 1/4																										
			SW 1/4 of NW 1/4																										
			SE 1/4 of NW 1/4																										
			NE 1/4 of SW 1/4																										
Frances D. Barton			NW 1/4 of SW 1/4																										
			SW 1/4 of SW 1/4			40		161																					
			SE 1/4 of SW 1/4																										
Interstate Colonization Co.			<i>S2 of</i> NE 1/4 of SE 1/4			20		80																					
			NW 1/4 of SE 1/4																										
			SW 1/4 of SE 1/4																										
John Swedford	F. E. Knutson		SE 1/4 of SE 1/4			40		308																					
								770																					
						140																							

3873 3368 505

7763

1760

1760 ✓ PAID IN FULL MAY 31 1926 4672 ✓

1760

875 ✓

3368

Tax List of Real Property in the Town of Pine Lake

Cass County, Minnesota, for Taxes for the Year 1925.

IN WHOSE NAME ASSESSED	TO WHOM TRANSFERRED	Sold for Taxes	SUB-DIVISION	Sec. or Lot	Town or Block	No. of Acres		VALUATION	No. School Dist.	GENERAL TAXES	School District No. Rate	School District No. Rate	School District No. Rate	Highway Ditch No.	Ditch No.	Ditch No.	Ditch No.	TOTAL TAXES	PAID	WHEN PAID	Number of Receipt	March Settlement	June Settlement	Penalty	November Settlement	Penalty	Collection to First Monday in January	Penalty	Delinquent on First Monday in January	REMARKS							
						Acres	100's																								Dollars	\$	cts.	\$	cts.	\$	cts.
			NE 1/4 of NE 1/4	3			141.29																														
Ida M. Merritt			NW 1/4 of NE 1/4																																		
			S ² of SW 1/4 of NE 1/4			20		81																													
Ed. J. P. Storde	Ida Pieper & Carl Pieper		SE 1/4 of NE 1/4																																		
Wm. H. Radke			Lot 1				24.75	152																													
			NE 1/4 of NW 1/4		3		27.90	169																													
			NW 1/4 of NW 1/4																																		
			SW 1/4 of NW 1/4																																		
O. bim - way - we - dum - oke			E ² of S ² of SE 1/4 of NW 1/4			10		40																													
Katherine C. Miner					12		23.88	145																													
			NE 1/4 of SW 1/4																																		
Harvey C. Sowers			NW 1/4 of SW 1/4				11.90	477																													
Ida M. Merritt			SW 1/4 of SW 1/4				37.15	150																													
			SE 1/4 of SW 1/4																																		
E. Kennedy			n ² Lot 5 less 600				8.90	373																													
O. bim - way - we - dum - oke (Jules Cossette) and Jue wis (Kay - way - je - gah - bow)			NE 1/4 of SE 1/4				66	39																													
			NW 1/4 of SE 1/4																																		
			SW 1/4 of SE 1/4																																		
			SE 1/4 of SE 1/4																																		
Mrs Emma Carnahan	Eras. Sheddard & Janu. E. Sheddard		SW ² of S ² of SE ⁴ NW ¹			10		41																													
			bae for lots				19.33	1691																													

1
 2
 3
 4
 5
 6
 7
 8
 9
 10
 11
 12
 13
 14
 15
 16
 17
 18
 19
 20

2nd half paid JUL 28 1926 8685 ✓
 1st half paid MAY 31 1926 6080 ✓
 Paid in full MAY 31 1926 5374 ✓
 Paid in full APR 14 1926 3059 ✓
 Paid in full MAY 17 1926 3775 ✓
 And half paid JUL 27 1926 10035 ✓
 1st half paid MAY 31 1926 7201 ✓
 2nd half paid JUL 28 1926 8685 ✓
 1st half paid MAY 11 1926 6080 ✓
 Paid in full MAY 31 1926 4266 ✓
 Paid 11/27 by Wm. R. # 20696

412
 413
 414
 415
 416
 417
 418
 419
 420

503 437 .66
 490 426
 13088 3871

Abatement # 655
 Sherman # 19396 - 2/23/01
 # 1463

Tax List of Real Property in the Town of Pine Lake

Cass County, Minnesota, for Taxes for the Year 1925.

IN WHOSE NAME ASSESSED	TO WHOM TRANSFERRED	Sub-division	No. of Acres	VALUATION	No. School Dist.	GENERAL TAXES			Highway Ditch	Ditch No.	Ditch No.	Ditch No.	TOTAL TAXES	PAID	WHEN PAID	Number of Receipt	March Settlement	June Settlement	Penalty	November Settlement	Penalty	Collections to First Monday in January	Penalty	Delinquent on First Monday in January	REMARKS	
						No. Rate	No. Rate	No. Rate																		
		NE 1/4 of NE 1/4	6 1/11 29																							
		NW 1/4 of NE 1/4																								
		SW 1/4 of NE 1/4																								
Richard J. Robertson		SE 1/4 of NE 1/4																								
		1 ac. of SE SW	X 1	5																						
		NE 1/4 of NW 1/4																								
		NW 1/4 of NW 1/4																								
		SW 1/4 of NW 1/4																								
		SE 1/4 of NW 1/4																								
		NE 1/4 of SW 1/4																								
Gustave Kulander, S. H. Hender + A. S. Hoiland		NW 1/4 of SW 1/4 Lot 3	42.38	170																						
Gunder Nave 100		SW 1/4 of SW 1/4																								
Hannah Skare		SE 1/4 of SW 1/4 less 4 acres	35	230																						
Richard J. Robertson		3 acres of SE SW less 1 acre	3	14																						
		1 acre of SE SW																								
		NE 1/4 of SE 1/4																								
		NW 1/4 of SE 1/4																								
		SW 1/4 of SE 1/4																								
Gustave Kulander		SE 1/4 of SE 1/4	110	179																						
Edward Robertson		1 ac. of SE SW		5																						
			127.08	603																						

55 Paid in Full MAY 31 1926 6210 ✓

1859 12 2nd Half Paid OCT 21 1926 9734 3390 ✓

2515 14 Paid in Full JUL 1 1926 \$361 ✓

153 15 Paid in Full MAY 31 1926 6220 ✓

1957 19 Paid in Full DEC 28 1926 12672

55 20 Paid in Full OCT 26 1926 9925

6594

PAID UNDER PROTEST

1907 196

1138 3499 1957

Tax List of Real Property in the Town of Pine Lake

Cass County, Minnesota, for Taxes for the Year 1925.

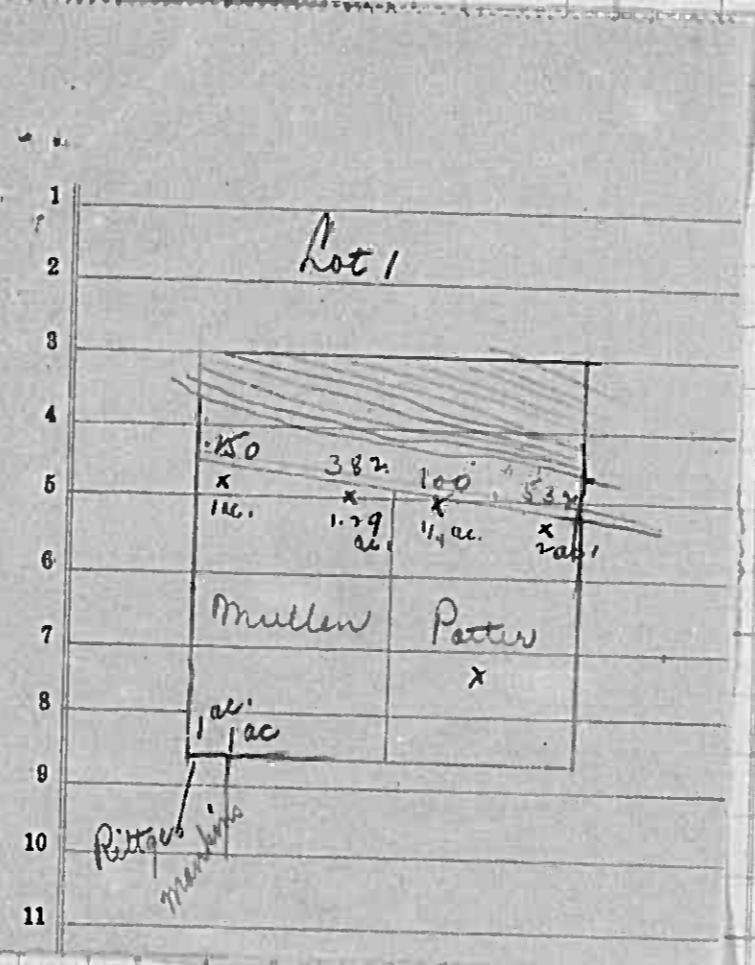
IN WHOSE NAME ASSESSED	TO WHOM TRANSFERRED	Sold for Taxes	SUB-DIVISION	No. of Acres		VALUATION	No. School Dist.	SCHOOL TAXES			Highway Ditch	Ditch No.	Ditch No.	Ditch No.	TOTAL TAXES	PAID	WHEN PAID	Number of Receipt	March Settlement	June Settlement	Penalty	November Settlement	Penalty	Collections to First Monday in January	Penalty	Delinquent on First Monday in January	REMARKS				
				Sec. or Lot	Town or Block			Acres	100'	No. Rate																		No. Rate	No. Rate	\$	cts.
Ida M. Merritt Gunder Nave			NE 1/4 of NE 1/4 Lot 1	7	141.29	1035									1793																
			NW 1/4 of NE 1/4		20		81																								
			SW 1/4 of NE 1/4																												
			SE 1/4 of NE 1/4																												
Daniel De Lury			NE 1/4 of NW 1/4		40										1760																
			NW 1/4 of NW 1/4																												
			SW 1/4 of NW 1/4																												
			SE 1/4 of NW 1/4		40		161																								
J.J. Welsh			NE 1/4 of SW 1/4		40										1760																
			NW 1/4 of SW 1/4 Lots		42	15	169																								
			SW 1/4 of SW 1/4 " 6		42	05	169																								
			SE 1/4 of SW 1/4		40		161																								
Daniel De Lury Webster Lbr. Co			NE 1/4 of SE 1/4		40										1760																
			NW 1/4 of SE 1/4																												
			SW 1/4 of SE 1/4		40		161																								
			SE 1/4 of SE 1/4		40		161																								
				424.55		1710								18695																	

2nd Half Paid JUL 28 1926 8685 ✓
 1st Half Paid MAY 31 1926 6184 ✓
 Paid in Full JUL 1 1926 896 897
 Paid in Full JUL 1 1926 8361 ✓ 2646 79
 ✓
 ✓
 ✓
 ✓
 1st Half Paid OCT 10 1926 10699 ✓
 1st Half Paid MAY 31 1926 5278 ✓
 880 880
 1776 4423

Tax List of Real Property in the Town of Pine Lake

Cass County, Minnesota, for Taxes for the Year 1925.

IN WHOSE NAME ASSESSED		TO WHOM TRANSFERRED		Sold for Taxes	SUB-DIVISION	Sec. or Lot	Town or Block	No. of Acres		VALUATION	No. School Dist.	GENERAL TAXES	School District No. Rate	School District No. Rate	School District No. Rate	Highway Ditch	Ditch No.	Ditch No.	Ditch No.	TOTAL TAXES	PAID	WHEN PAID	Number of Receipt	March Settlement	June Settlement	Penalty	November Settlement	Penalty	Collections to First Monday in January	Penalty	Delinquent on First Monday in January	REMARKS							
Dollars	cts.	Dollars	cts.	Dollars	cts.	Dollars	cts.	Acre	100's	Dollars		\$	cts.	\$	cts.	\$	cts.	\$	cts.	Dollars	cts.	Mo.	Day	\$	cts.	\$	cts.	\$	cts.	\$	cts.	\$	cts.	\$	cts.				
Emma J. Spencer		Edna Spencer Barrett			N. 250 ft of the W2 Lot 1 N. of Highway															350	✓	2nd Half Paid	OCT 10 1926	657															
Wm. Mullens					W2 Lot 1 Doof Road less 2 acres					54										590	✓	1st Half Paid	MAY 31 1926	6803	175			175											
Ray Potter					NE 1/4 of NE 1/4					64										700	✓	2nd Half Paid	JUL 9 1926	6614															
Wm. Mullen					NW 1/4 of NE 1/4					175										1913	✓	3rd Half Paid	OCT 28 1926	10063															
Oswald Lind					SW 1/4 of NE 1/4 Lot 6 S. of Rd.					81										886	✓	4th Half Paid	MAY 29 1926	5145	1400														
					W2 of SE 1/4 of NE 1/4					32										350	✓	5th Half Paid	SEP 24 1926	3541															
					E 2/3 of NE 1/4					81										886	✓	6th Half Paid	MAY 31 1926	5503	743														
Martin L. Rittgers					NW 1/4 of NW 1/4					15										164	✓	8th Half Paid	MAY 6 1926	3509	164														
Geo. Markins					SW 1/4 of NW 1/4 Lot 7 S. of Rd.					130										1421	✓	9th Half Paid	OCT 30 1926	10099															
Webster Lbr. Co.					NE 1/4 of SW 1/4 " 2					236										2580	✓	10th Half Paid	MAY 31 1926	5878	1290														
Gustave Kulander					NW 1/4 of SW 1/4 " 9					159										1739	✓	11th Half Paid	MAY 31 1926	5086	869														
J. J. Welsh					SW 1/4 of SW 1/4 " 10					202										2209	✓	12th Half Paid	OCT 30 1926	6699															
Webster Lbr. Co.					SE 1/4 of SW 1/4 " 10					127										1389	✓	13th Half Paid	MAY 31 1926	5878	695														
Francis Bonriville					SE 1/4 of SE 1/4 " 8					161										1760	✓	14th Half Paid	MAY 31 1926	5878	695														
Oswald Lind					NE 1/4 of SE 1/4 " 8					106										1159	✓	15th Half Paid	OCT 30 1926	6699	860														
R.E. Kreeger					NW 1/4 of SE 1/4 " 8					161										1760	✓	16th Half Paid	MAY 31 1926	5503	880														
"					SW 1/4 of SE 1/4 " 8					80										875	✓	17th Half Paid	SEP 25 1926	9050	880														
"					W2 of SE 1/4 of SE 1/4 " 8					80										875	✓	18th Half Paid	MAY 31 1926	3692	875														
"					E 2 of " " " 8					80										875	✓	19th Half Paid	MAY 31 1926	7050	875														
											23366					8436	8932	890																					



Tax List of Real Property in the Town of Pine Lake

Cass County, Minnesota, for Taxes for the Year 1925.

IN WHOSE NAME ASSESSED	TO WHOM TRANSFERRED	Sold for Taxes	SUB-DIVISION	Sec. or Lot	Town or Block	No. of Acres		VALUATION Dollars	No. School Dist.	GENERAL TAXES	School District No. Rate Mills	School District No. Rate Mills	School District No. Rate Mills	Highway Ditch No.	Ditch No.	Ditch No.	Ditch No.	TOTAL TAXES Dollars cts.	PAID	WHEN PAID	Number of Receipt	March Settlement	June Settlement	Penalty	November Settlement	Penalty	Collections to First Monday in January	Penalty	Delinquent on First Monday in January	REMARKS										
						Acres	100's																								\$	cts.	\$	cts.	\$	cts.	\$	cts.	\$	cts.
						Month	Day																								Year	\$	cts.	\$	cts.	\$	cts.	\$	cts.	\$
Ida M. Meritt			NE 1/4 of NE 1/4 Lot 1	9	14129	27	30	330																																
			NW 1/4 of NE 1/4																3608	1	2nd Half Paid 1st. Half Paid	JUL 23 1925 MAY 24 1925	8685 4530		1804	1804														
Immigration Land Co. Ida M. Meritt			SW 1/4 of NE 1/4																	2																				
			SE 1/4 of NE 1/4 Lot 2			55		665												3																				
			SE 1/4 of NE 1/4			40		161													4																			
			NE 1/4 of NW 1/4																		5	2nd Half Paid 1st. Half Paid	JUL 23 1925 MAY 24 1925	8685 4530		880	880													
			NW 1/4 of NW 1/4																		6																			
			SW 1/4 of NW 1/4																		7																			
			SE 1/4 of NW 1/4																		8																			
Ed. C. Stocumb			NE 1/4 of SW 1/4			40		161													10																			
			NW 1/4 of SW 1/4			40		161													11																			
R. E. Krueger Leech Lake Land & Invest Co.			SW 1/4 of SW 1/4			40		161													12																			
			SE 1/4 of SW 1/4			40		161													13	2nd Half Paid 1st. Half Paid	MAY 3 1925 MAY 3 1925	11940 7367		1760	1760													
			NE 1/4 of SE 1/4																		14																			
			NW 1/4 of SE 1/4																		15																			
			SW 1/4 of SE 1/4																		16																			
			SE 1/4 of SE 1/4																		17																			
																					18																			
																					19																			
																					20																			
						28230		1800																																
																						19679					5324	5324												

Tax List of Real Property in the Town of Pine Lake

IN WHOSE NAME ASSESSED	TO WHOM TRANSFERRED	Sold for Taxes	SUB-DIVISION	Sec. or Lot	Town or Block	No. of Acres		VALUATION	No. School Dist.	School District															
						Acres	100's			No. Rate	No. Rate	No. Rate													
									MillsMillsMills													
			NE 1/4 of NE 1/4			10	11	29																	
			NW 1/4 of NE 1/4																						
			SW 1/4 of NE 1/4																						
			SE 1/4 of NE 1/4																						
			NE 1/4 of NW 1/4																						
			S ² of NW 1/4 of NW 1/4				20																		
			SW 1/4 of NW 1/4				10																		
			SE 1/4 of NW 1/4																						
			n ² of n ^w 1/4 of NW 1/4				20																		
			NE 1/4 of SW 1/4				10																		
			NW 1/4 of SW 1/4																						
			SW 1/4 of SW 1/4																						
			SE 1/4 of SW 1/4				40																		
			NE 1/4 of SE 1/4																						
			NW 1/4 of SE 1/4																						
			SW 1/4 of SE 1/4																						
			SE 1/4 of SE 1/4																						
							160																		

Edw. C. Slocumb
Beatrice Munnell

Ida M. Merritt
Gust Kulander, S. E. Gerber & A. S. Hoiland

Gustave Kulander

Cass County, Minnesota, for Taxes for the Year 1925.

Highway Ditch No.	Ditch No.	Ditch No.	Ditch No.	TOTAL TAXES	PAID	WHEN PAID	Number of Receipt	March Settlement	June Settlement	Penalty	November Settlement	Penalty	Collections to First Monday in January	Penalty	Delinquent on First Monday in January	REMARKS														
																	\$	cts.	\$	cts.	\$	cts.	\$	cts.	\$	cts.	\$	cts.	\$	cts.
																	Dollars	cts.	Dollars	cts.	Month	Day	Year	\$	cts.	\$	cts.	\$	cts.	\$
				886																										
				1760																										
				886																										
				1760																										
				1760																										
				1760																										
				7052																										

2nd P^y Paid JUL 28 1925 8686
1st. Mail Paid MAY 1 1925 6082 ✓
443 443

443 443

Tax List of Real Property in the Town of Pine Lake

Cass County, Minnesota, for Taxes for the Year 1925.

IN WHOSE NAME ASSESSED	TO WHOM TRANSFERRED	Sold for Taxes	SUB-DIVISION	Sec. or Lot	Town or Block	No. of Acres		VALUATION	No. School Dist.	GENERAL TAXES	School District	School District	School District	Highway Ditch No.	Ditch No.	Ditch No.	Ditch No.	TOTAL TAXES		PAID	WHEN PAID	Number of Receipt	March Settlement	June Settlement	Penalty	November Settlement	Penalty	Collections to First Monday in January	Penalty	Delinquent on First Monday in January	REMARKS							
						No. Rate	No. Rate				No. Rate	Dollars	cts.																									
			NE 1/4 of NE 1/4		11	141	59			\$	cts.	\$	cts.	\$	cts.	\$	cts.	Dollars	cts.		Month	Day	Year	\$	cts.	\$	cts.	\$	cts.	\$	cts.	\$	cts.	\$	cts.			
			NW 1/4 of NE 1/4																																			
			SW 1/4 of NE 1/4																																			
			SE 1/4 of NE 1/4																																			
Amelia L. Kulanders			Lot 3				39	73		160																												
Bessie Sitar			NE 1/4 of NW 1/4				40			161																												
			NW 1/4 of NW 1/4																																			
			SW 1/4 of NW 1/4																																			
"			N ² of SE 1/4 of NW 1/4				20			81																												
Gustave Kulander, S.E. Herber & A.S. Hoiland							30	70		123																												
			NE 1/4 of SW 1/4																																			
			NW 1/4 of SW 1/4																																			
			SW 1/4 of SW 1/4																																			
"			SE 1/4 of SW 1/4				38	40		154																												
Gustave Kulander, S.E. Herber & A.S. Hoiland							59	95		242																												
Shepard H. Wood			S ² of NE 1/4 of SE 1/4				20			80																												
			NW 1/4 of SE 1/4																																			
			SW 1/4 of SE 1/4																																			
Herbert Strauss			S ² of SE 1/4 of SE 1/4				20			80																												
Wenzel Woodford			N ² NE 1/4 SE 1/4				20			158																												
							288	78		1239																												

1749 ✓
 1760 16 Paid to Full SEP 9 1926
 886 9 Paid to Full SEP 9 1926 } 8979
 1345 10 1st Half Paid MAY 3 1 1926 } 10917
 1684 14 1st Half Paid MAY 3 1 1926 } 5069 ✓
 2646 15 ✓
 875 16 1st Half Paid MAY 1 5 1926 } 4086 ✓
 875 19 1st Half Paid MAY 3 1 1926 } 5716 ✓
 1728 20 ✓
 13548
 2391 5034

PERSONAL

Tax List of Real Property in the Town of Pine Lake

Cass County, Minnesota, for Taxes for the Year 1925.

IN WHOSE NAME ASSESSED	TO WHOM TRANSFERRED	Sold for Taxes	SUB-DIVISION	Sec. or Lot	Town or Block	Trng.	No. of Acres Acres 100's	VALUATION Dollars	No. School Dist.	GENERAL TAXES \$ cts.	School District No. Rate Mills	School District No. Rate Mills	School District No. Rate Mills	Highway Ditch No.	Ditch No.	Ditch No.	Ditch No.	TOTAL TAXES Dollars cts.	PAID	WHEN PAID	Number of Receipt	March Settlement	June Settlement	Penalty	November Settlement	Penalty	Collections in First Monday in January	Penalty	Delinquent on First Monday in January	REMARKS							
Herbert Strauss Amelia Kulander			NE 1/4 of NE 1/4		14		14 129 20	81		\$	\$	\$	\$					886	1st. Half Paid	OCT 13 1926	9573																
			NW 1/4 of NE 1/4 } Lot 7				50 50	202										2209	2nd. Half Paid	MAY 31 1926	5716		443	443													
Gust. Kulander, S. H. Herber & U. S. Hoiland			SW 1/4 of NE 1/4 } SE 1/4 of NE 1/4 }				40	161																													
J. W. Allen	A. S. Hoiland		" 8				42	169										1760	1st. Half Paid	OCT 21 1926	3890		1804	1804													
			NE 1/4 of NW 1/4 } " 2				46 25	186										1848	2nd. Half Paid	OCT 21 1926	9734																
			NW 1/4 of NW 1/4 } SW 1/4 of NW 1/4 } SE 1/4 of NW 1/4 }															2034	1st. Half Paid	MAY 31 1926																	
Ed. C. Slacumb	"s int. & Hoiland & Wood		" 1				40 15	162										1771	2nd. Half Paid	OCT 30 1926	1140		885	886													
			NE 1/4 of SW 1/4 } NW 1/4 of SW 1/4 } SW 1/4 of SW 1/4 }																																		
Leech Lake Land & Inv. Co. Ed. C. Slacumb			SE 1/4 of SW 1/4 } S 2 of NE 1/4 of NE 1/4 }				40	161										1760	1st. Half Paid	OCT 30 1926	1140																
			NE 1/4 of SE 1/4 } NW 1/4 of SE 1/4 }				20	80										875	2nd. Half Paid	OCT 30 1926	1140		438	437													
Lewis Mills			SW 1/4 of SE 1/4 } " 9				36 75	292										3193	1st. Half Paid	MAY 31 1926	7367																
			SE 1/4 of SE 1/4 }																																		
								33565	1494																												
																			16336					3570	3570												

367x 8193 4.99

Tax List of Real Property in the Town of Pine Lake

Cass County, Minnesota, for Taxes for the Year 1925.

IN WHOSE NAME ASSESSED	TO WHOM TRANSFERRED	Sold for Taxes	SUB-DIVISION	Sec. or Lot	Town or Block	Rng.	No. of Acres		VALUATION	No. School Dist.	School District			Highway Ditch No.	Ditch No.	Ditch No.	Ditch No.	TOTAL TAXES		PAID	WHEN PAID	Number of Receipt	March Settlement	June Settlement	Penalty	November Settlement	Penalty	Collections in First Monday in January	Penalty	Delinquent on First Monday in January	REMARKS								
							Acre	100's			GENERAL TAXES	School District No. Rate Mills	School District No. Rate Mills					School District No. Rate Mills	Dollars													Cts.	Dollars	Cts.	Dollars	Cts.	Dollars	Cts.	Dollars
Farmer's State Bk Walker			NE 1/4 of NE 1/4	16	141	29																																	
"			NW 1/4 of NE 1/4				40		161																														
"			SW 1/4 of NE 1/4				40		161																														
"			SE 1/4 of NE 1/4 Lots				33	40	135																														
Leech Lake Land & Invest Co.			NE 1/4 of NW 1/4				40		161																														
Algina Owens			NW 1/4 of NW 1/4				40		161																														
Amelia Kulander			SW 1/4 of NW 1/4				40		161																														
Peder Dahl			SE 1/4 of NW 1/4				20		80																														
Wm. Kulander S. H. Mesher & A. S. Hoiland			S ² of SE 1/4 of NW 1/4				20		80																														
Leech Lake Land & Inv. Co.			N ² of SE 1/4 of NW 1/4				20		80																														
E. C. Slocumb			NE 1/4 of SW 1/4 Less 17 1/2 ac.				22	50	89																														
"			NW 1/4 of SW 1/4				40		161																														
Leech Lake Land & Inv. Co.			N ² of SW 1/4 of SW 1/4				20		81																														
Peder O. Dahl			SE 1/4 of SW 1/4				40		161																														
Ole P. Haugen			17 1/2 a. of NE 1/4 of SW 1/4 of Longville Tride				17	50	162																														
"			NE 1/4 of SE 1/4 Lot 3				37	90	152																														
"			NW 1/4 of SE 1/4				40		162																														
"			SW 1/4 of SE 1/4				40		423																														
Edw. C. Slocumb			SE 1/4 of SE 1/4				40		162																														
			S ² of SW 1/4 of SW 1/4				20		81																														
							59	30	2134																														

PERSONAL

Tax List of Real Property in the Town of Pine Lake

IN WHOSE NAME ASSESSED	TO WHOM TRANSFERRED	Sold for Taxes	SUB-DIVISION	Sec. or Lot	Town or Block	Rtg.	No. of Acres		VALUATION	No. School Dist.	GENERAL TAXES	School District No. Rate Mills	School District No. Rate Mills	School District No. Rate Mills
							Acres	100's						
Orin B. Swearingen			NE 1/4 of NE 1/4	20	141	29	40		129					
"			NW 1/4 of NE 1/4				40		196					
A. G. Emery			SW 1/4 of NE 1/4				40		228					
John A. Kamberling			SE 1/4 of NE 1/4				40		129					
Effie Mae Emery			NE 1/4 of NW 1/4				40		166					
Robt. Askin			NW 1/4 of NW 1/4				40		61					
Effie Mae Emery			SW 1/4 of NW 1/4 less 19.2 ch.				39		125					
"			SE 1/4 of NW 1/4				40		161					
"			Lot 3				31 80		153					
"			NE 1/4 of SW 1/4											
Wm. Kline			NW 1/4 of SW 1/4											
"			SW 1/4 of SW 1/4 " 5				55 39		223					
"			SE 1/4 of SW 1/4 " 6				48 20		194					
John W. Born			NE 1/4 of SE 1/4 " 1				46 20		186					
"			NW 1/4 of SE 1/4 " 2				39		158					
H. L. Gordon			SW 1/4 of SE 1/4 " 7				44		177					
"			SE 1/4 of SE 1/4 " 8				33 80		136					
							617 39		2422					

Cass County, Minnesota, for Taxes for the Year 1925.

Highway Ditch No.	Ditch No.	Ditch No.	Ditch No.	TOTAL TAXES	PAID	WHEN PAID	Number of Receipt	March Settlement	June Settlement	Penalty	November Settlement	Penalty	Collections to First Monday in January	Penalty	Delinquent on First Monday in January	REMARKS
				1410	1											
				2143	2											
				2493	3											
				1410	4	Paid in full	OCT 30 1926	11527					1410	63		
					5											
				1815	6											
				667	7	Paid in full	MAY 20 1926	4889					667		2087 1815 2.7	
				1367	8											
				1760	9										1574 1367 2.05	
				1673	10										2024 1760 2.64	
					11										1924 1673 2.51	
					12											
				2438	13	Paid in full	DEC 31 1926	12741								
				2121	14	Paid in full	DEC 31 1926								4559 456	
					15											
				2034	16											
				1728	17											
				1935	18	Paid in full	MAY 31 1926	7469					1935		2339 2034 3.05	
				1487	19	Paid in full	MAY 31 1926	7469					1487		1927 1728 2.59	
					20											
				26481									4089		1410	4559

Tax List of Real Property in the Town of Pine Lake

Cass County, Minnesota, for Taxes for the Year 1925.

IN WHOSE NAME ASSESSED	TO WHOM TRANSFERRED	Sold for Taxes	SUB-DIVISION	Sec. or Lot	Town or Block	Rtg.	No. of Acres		VALUATION	No. School Dist.	GENERAL TAXES			School District No.	School District No.	School District No.	Highway Ditch No.	Ditch No.	Ditch No.	Ditch No.	TOTAL TAXES	PAID	WHEN PAID			Number of Receipt	March Settlement	June Settlement	Penalty	November Settlement	Penalty	Collections in First Monday in January	Penalty	Delinquent on First Monday in January	REMARKS		
							Acres	100's			\$	cts.	\$	cts.	\$	cts.	\$	cts.	\$	cts.			Dollars	cts.	Month											Day	Year
			NE 1/4 of NE 1/4	25	141	29																															
			NW 1/4 of NE 1/4																																		
			SW 1/4 of NE 1/4																																		
			SE 1/4 of NE 1/4																																		
Theodore D. Anderson			NE 1/4 of NW 1/4				40		161																												
Ogden H. Hammond	Land Co.		NW 1/4 of NW 1/4																																		
			SW 1/4 of NW 1/4 Lot 5				19	06	78																												
			SE 1/4 of NW 1/4																																		
Weyerhauser et al			NE 1/4 of SW 1/4				40		161																												
"			NW 1/4 of SW 1/4				40		161																												
"			SW 1/4 of SW 1/4				40		161																												
"			SE 1/4 of SW 1/4				40		161																												
"			NE 1/4 of SE 1/4 " 8				38	04	154																												
"			NW 1/4 of SE 1/4 " 7				45	03	183																												
"			SW 1/4 of SE 1/4				40		161																												
"			SE 1/4 of SE 1/4				40		161																												
							38	13	1542																												

16858

9308 7123

491 427 .64

1760 Paid in full MAR 19 1926 5947 ✓

853 1st Half Paid MAY 31 1926 5793 ✓

1760 1st Half Paid MAY 21 1926 9354 ✓

1760 1st Half Paid MAY 21 1926 4254 ✓

1760 1st Half Paid MAY 21 1926 4254 ✓

2001 1st Half Paid MAY 21 1926 4254 ✓

1760 1st Half Paid MAY 21 1926 4254 ✓

1760 1st Half Paid MAY 21 1926 9354 ✓

Tax List of Real Property in the Town of Pine Lake

Cass County, Minnesota, for Taxes for the Year 1925.

IN WHOSE NAME ASSESSED	TO WHOM TRANSFERRED	Sold for Taxes	SUB-DIVISION	Sec. or Lot	Town or Block	No. of Acres		VALUATION	No. School Dist.	GENERAL TAXES	School District	School District	School District	Highway Ditch	Ditch No.	Ditch No.	Ditch No.	TOTAL TAXES	PAID	WHEN PAID	Number of Receipt	March Settlement	June Settlement	Penalty	November Settlement	Penalty	Collections to First Monday in January	Penalty	Delinquent on First Monday in January	REMARKS					
						No. Rate	No. Rate				No. Rate	Dollars	cts.																		Dollars	cts.	Dollars	cts.	Dollars
Wm. M. Livingston			NE 1/4 of NE 1/4	29	141	29	40	161										1760	1st. Half Paid	MAY 30	1926														
"			NW 1/4 of NE 1/4			40		161										1760	2nd. Half Paid	MAY 30	1926														
"			SW 1/4 of NE 1/4			40		161										1760	1st. Half Paid	MAY 30	1926														
"			SE 1/4 of NE 1/4			40		161										1760	1st. Half Paid	MAY 30	1926														
"			NE 1/4 of NW 1/4			40		161										1760	1st. Half Paid	MAY 30	1926														
"			NW 1/4 of NW 1/4			40		161										1760	2nd. Half Paid	OCT 30	1926														
"			SW 1/4 of NW 1/4			40		161										1760	1st. Half Paid	MAY 30	1926														
"			SE 1/4 of NW 1/4			40		161										1760	1st. Half Paid	MAY 30	1926														
James H. Smith			NE 1/4 of SW 1/4			40		161										1760	1st. Half Paid	MAY 30	1926														
"			NW 1/4 of SW 1/4			40		161										1760	1st. Half Paid	MAY 30	1926														
"			SW 1/4 of SW 1/4			40		161										1760	1st. Half Paid	MAY 30	1926														
"			SE 1/4 of SW 1/4			40		161										1760	1st. Half Paid	MAY 30	1926														
J. C. Hawkins			NE 1/4 of SE 1/4			40		161										1760	1st. Half Paid	MAY 30	1926														
"			NW 1/4 of SE 1/4			40		161										1760	1st. Half Paid	MAY 30	1926														
"			SW 1/4 of SE 1/4			40		161										1760	1st. Half Paid	MAY 30	1926														
"			SE 1/4 of SE 1/4			40		161										1760	1st. Half Paid	MAY 30	1926														
						640		257.6										28160																	

12-11-26
7655 ✓
7040
7040

10867
7676 ✓
3520
3520

10260
10560

Tax List of Real Property in the Town of Pine Lake

Cass County, Minnesota, for Taxes for the Year 1925.

IN WHOSE NAME ASSESSED	TO WHOM TRANSFERRED	Sold for Taxes	SUB-DIVISION	Sec. or Lot	Town or Block	No. of Acres		VALUATION	No. School Dist.	GENERAL TAXES	School District	School District	School District	Highway Ditch	Ditch No.	Ditch No.	Ditch No.	TOTAL TAXES	PAID	WHEN PAID	Number of Receipt	March Settlement	June Settlement	Penalty	November Settlement	Penalty	Collections in First Monday in January	Penalty	Delinquent on First Monday in January	REMARKS					
						No. Rate	No. Rate				No. Rate	\$	cts.																		\$	cts.	\$	cts.	\$
R. H. Ward			NE 1/4 of NE 1/4	31	141	29	40	161										1760	1																
A. H. Wilder			NW 1/4 of NE 1/4 Lot 1				34	137										1498	2	1st. Half Paid MAY 3 1926	30	1926	1190												
S. W. Farnham			SW 1/4 of NE 1/4 " 6				31	124										1356	3	1st. Half Paid MAY 3 1926	30	1926	751		1427		1427								
R. H. Ward			SE 1/4 of NE 1/4				40	161										1760	4																
A. H. Wilder			NE 1/4 of NW 1/4 " 2				28	75																											
R. H. Ward			NW 1/4 of NW 1/4 " 3				42	09										1268	6	1st. Half Paid MAY 3 1926	30	1926	751		634		634								
S. W. Farnham			SW 1/4 of NW 1/4 " 4				41	50										1848	7																
			SE 1/4 of NW 1/4 " 5				38	20										1826	8																
R. H. Ward			NE 1/4 of SW 1/4				40											1673	9	1st. Half Paid MAY 3 1926	30	1926	751		837		836								
"			NW 1/4 of SW 1/4 " 7				40	90										1760	11																
"			SW 1/4 of SW 1/4 " 8				40	30										1793	12																
"			SE 1/4 of SW 1/4				40											1771	13																
"			NE 1/4 of SE 1/4				40											1760	14																
E. L. Frank			NW 1/4 of SE 1/4				40											1760	16																
Ralph C. Frank			SW 1/4 of SE 1/4				40											1760	17	2nd Half Paid OCT 30 1926	11	1926	1175		880		880								
"			SE 1/4 of SE 1/4				40											1760	18	1st. Half Paid MAY 3 1926	30	1926	842												
							40											1760	19																
							616	74										27113	20						3778		3777								

Tax List of Real Property in the Town of Pine Lake

Cass County, Minnesota, for Taxes for the Year 1925.

IN WHOSE NAME ASSESSED	TO WHOM TRANSFERRED	Sold for Taxes	SUB-DIVISION	Sec. or Lot	Town or Block	Rtg.	No. of Acres		VALUATION	No. School Dist.	GENERAL TAXES	School District	School District	School District	Highway Ditch No.	Ditch No.	Ditch No.	Ditch No.	TOTAL TAXES	PAID	WHEN PAID	Number of Receipt	March Settlement	June Settlement	Penalty	November Settlement	Penalty	Collections in First Month in January	Penalty	Delinquent on First Monday in January	REMARKS						
							No. Rate	No. Rate				No. Rate	\$	cts.																		\$	cts.	\$	cts.	\$	cts.
A. H. Wilder			NE 1/4 of NE 1/4	33	141	29	40	161											1760																		
R. H. Ward			NW 1/4 of NE 1/4 Lot 2				26	65	104										1137																		
"			SW 1/4 of NE 1/4 " 3				39	40	159										1739																		
A. H. Wilder			SE 1/4 of NE 1/4				40		161										1760																		
R. H. Ward			NE 1/4 of NW 1/4																																		
"			NW 1/4 of NW 1/4 " 5				29	62	120																												
"			SW 1/4 of NW 1/4 " 4				15	35	62																												
"			SE 1/4 of NW 1/4																																		
"			NE 1/4 of SW 1/4				40		161																												
"			NW 1/4 of SW 1/4				40		161																												
"			SW 1/4 of SW 1/4 " 6				36	50	147																												
"			SE 1/4 of SW 1/4 " 7				38	15	153																												
A. H. Wilder			NE 1/4 of SE 1/4				40		161																												
R. H. Ward			NW 1/4 of SE 1/4				40		161																												
"			SW 1/4 of SE 1/4 " 8				39	40	159																												
John E. Smith			SE 1/4 of SE 1/4 " 9				26	15	105																												
							49	22	1975																												

21593

1148 5280

Tax List of Real Property in the Town of Pine Lake

Cass County, Minnesota, for Taxes for the Year 1925.

IN WHOSE NAME ASSESSED	TO WHOM TRANSFERRED	Subl for Taxes	SUB-DIVISION	Sec. or Lot	Town or Block	No. of Acres		VALUATION	No. School Dist.	GENERAL TAXES	School District No. Rate Mills	School District No. Rate Mills	School District No. Rate Mills	Highway Ditch No.	Ditch No.	Ditch No.	Ditch No.	TOTAL TAXES	PAID	WHEN PAID	Number of Receipt	March Settlement	June Settlement	Penalty	November Settlement	Penalty	Collections to First Monday in January	Penalty	Delinquent on First Monday in January	REMARKS																
						Dollars	Cts.																								Dollars	Cts.	Dollars	Cts.	Dollars	Cts.	Dollars	Cts.	Dollars	Cts.	Dollars	Cts.	Dollars	Cts.	Dollars	Cts.
						Dollars																									Cts.		Dollars		Cts.		Dollars		Cts.		Dollars		Cts.		Dollars	
R. H. Ward			NE 1/4 of NE 1/4	34	141	29	40	161	✓									1760	✓																											
S. W. Farnham			NW 1/4 of NE 1/4				40	161										1760	2	2nd Half Paid	OCT 30	1926																								
"			SW 1/4 of NE 1/4				40	161										1760	2	1st Half Paid	MAY 31	1926	8453 ✓		1760																					
R. H. Ward			SE 1/4 of NE 1/4				40	161	✓									1760	3	1st Half Paid	MAY 31	1926																								
S. W. Farnham			NE 1/4 of NW 1/4				40	161										1760	6	2nd Half Paid	OCT 30	1926	8453 ✓		880		880																			
R. H. Ward			NW 1/4 of NW 1/4				40	161	✓									1760	6	1st Half Paid	MAY 31	1926																								
"			SW 1/4 of NW 1/4				40	161	✓									1760	7	✓																										
A. H. Wilder			SE 1/4 of NW 1/4				40	161										1760	8	✓																										
H. L. Gordon			NE 1/4 of SW 1/4				40	161										1760	9	2nd Half Paid	OCT 30	1926	8453 ✓		880		880																			
A. H. Wilder			NW 1/4 of SW 1/4				40	161										1760	11	Paid in full	MAY 31	1926	7469 ✓		1760																					
D. H. Fidgewell			SW 1/4 of SW 1/4 Lot 4				37 50	151										1760	12	1st Half Paid	OCT 30	1926	8423 ✓		880		880																			
R. H. Ward			SE 1/4 of SW 1/4 " 3				39 90	161	✓									1651	13	1st Half Paid	MAY 31	1926	7513 ✓		825		825																			
"																		1760	14	✓																										
"			NE 1/4 of SE 1/4 " 1				54 35	219	✓									2395	16	✓																										
			NW 1/4 of SE 1/4 " 2				51 40	207	✓									2263	17	✓																										
			SW 1/4 of SE 1/4																																											
			SE 1/4 of SE 1/4																																											
							583 15	2348										25669								6985		5226																		

Tax List of Real Property in the Town of Pine Lake

Cass County, Minnesota, for Taxes for the Year 1925.

IN WHOSE NAME ASSESSED	TO WHOM TRANSFERRED	Sold for Taxes	SUB-DIVISION	Sec. or Lot	Town or Block	Hwy.	No. of Acres		VALUATION	No. School Dist.	School District			Highway Ditch No.	Ditch No.	Ditch No.	Ditch No.	TOTAL TAXES	PAID	WHEN PAID	Number of Receipt	March Settlement	June Settlement	Penalty	November Settlement	Penalty	Collections to First Monday in January	Penalty	Delinquent on First Monday in January	REMARKS
							Acres	100%			No. Rate	No. Rate	No. Rate																	
R. H. Ward			NE 1/4 of NE 1/4	35	141	29	40	129										1410												
"			NW 1/4 of NE 1/4				40	129										1410												
"			SW 1/4 of NE 1/4				40	129										1410												
"			SE 1/4 of NE 1/4				40	129										1410												
"			NE 1/4 of NW 1/4				40	129										1410												
"			NW 1/4 of NW 1/4				40	129										1410												
"			SW 1/4 of NW 1/4				40	129										1410												
"			SE 1/4 of NW 1/4				40	129										1410												
Will R. Peters	G.E. Fosbroke		NE 1/4 of SW 1/4 Lot 2				18	57										623												
"	"		NW 1/4 of SW 1/4 " 1				35	80										1268												
Christian J. Anderson	"		SW 1/4 of SW 1/4 " 4				32	1										11												
Will R. Peters	G.E. Fosbroke		SE 1/4 of SW 1/4 " 3				26	35										929												
Minnie P. Brewer			NE 1/4 of SE 1/4				40	129										1410												
"			NW 1/4 of SE 1/4				40	129										1410												
"			SW 1/4 of SE 1/4				40	129										1410												
"			SE 1/4 of SE 1/4				40	129										1410												
							560	47										1807												
																		19751												

See Abatement 787

11 2370

PERSONAL

Tax List of Real Property in the Town of Pine Lake

Cass County, Minnesota, for Taxes for the Year 1925.

IN WHOSE NAME ASSESSED	TO WHOM TRANSFERRED	Sold for Taxes	SUB-DIVISION	Sec. or Lot	Town or Block	No. of Acres		VALUATION	No. School Dist.	GENERAL TAXES	School District			Highway Ditch	Ditch No.	Ditch No.	Ditch No.	TOTAL TAXES	PAID	WHEN PAID			Number of Receipt	March Settlement	June Settlement	Penalty	November Settlement	Penalty	Collections to First Monday in January	Penalty	Delinquent on First Monday in January	REMARKS			
						100's	10's				Dollars	Dollars	cts.							Dollars	cts.	Dollars											cts.	Dollars	cts.
<i>Adolphe Utke</i>			NE 1/4 of NE 1/4	36	141	29	40	308											3368		1st Half Paid	MAY 31	1926												
"			NW 1/4 of NE 1/4				40	161											1760	✓	1st Half Paid	MAY 31	1926	7407	✓		4328								
"			SW 1/4 of NE 1/4				40	161											1760	✓	1st Half Paid	MAY 31	1926												
"			SE 1/4 of NE 1/4				40	161											1760	✓	1st Half Paid	MAY 31	1926												
<i>Frank W. George</i>			NE 1/4 of NW 1/4				40	161											1760	✓															
<i>Helen George</i>			NW 1/4 of NW 1/4				40	161											1760	✓															
<i>Sven Dyrdaahl</i>			SW 1/4 of NW 1/4				40	161											1760	✓	2nd Half Paid	MAY 12	1926	9284	✓		880		880						
<i>Frank W. George</i>			SE 1/4 of NW 1/4				40	161											1760	✓	1st Half Paid	MAY 12	1926	3726	✓										
<i>Martin J. Luam</i>			NE 1/4 of SW 1/4				40	161											1760	✓															
"			NW 1/4 of SW 1/4				40	161											1760	✓															
"			SW 1/4 of SW 1/4				40	161											1760	✓															
"			SE 1/4 of SW 1/4				40	161											1760	✓															
<i>Arthur H. Young</i>			NE 1/4 of SE 1/4				40	161											1760	✓	Paid in Full	APR 27	1926	3756	✓		3576								
"			NW 1/4 of SE 1/4				40	161											1760	✓	Paid in Full	APR 27	1926												
<i>Mary Helena Totten</i>			SW 1/4 of SE 1/4				40	161											1760	✓	Paid in Full	AUG 2	1926												
"			SE 1/4 of SE 1/4				40	161											1760	✓	Paid in Full	AUG 2	1926	9724	✓		3620		123						
						640		2723																											
						1513078		68368																											
																		29768				8923	4400												
																		747471	-650K																

Bal. due 4825

PERSONAL