

ASSESSMENT & TAX LIST · 1962  
Pike Bay

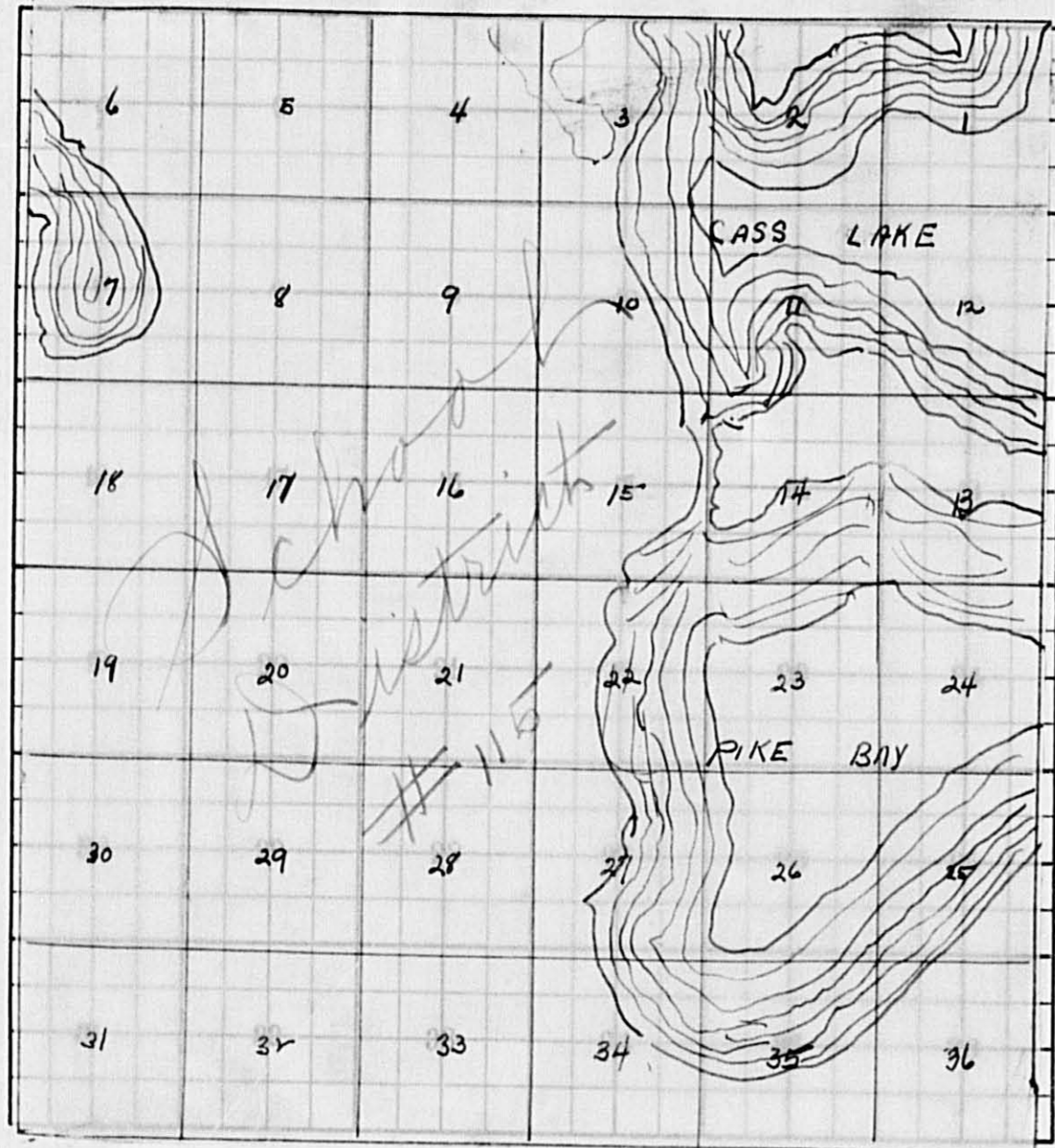
INDEX TO SECTIONS

SECTION PAGE

Sec. 1.....	
" 2.....	
" 3.....	
" 4.....	
" 5.....	
" 6.....	
" 7.....	
" 8.....	
" 9.....	
" 10.....	
" 11.....	
" 12.....	
" 13.....	
" 14.....	
" 15.....	
" 16.....	
" 17.....	
" 18.....	
" 19.....	
" 20.....	
" 21.....	
" 22.....	
" 23.....	
" 24.....	
" 25.....	
" 26.....	
" 27.....	
" 28.....	
" 29.....	
" 30.....	
" 31.....	
" 32.....	
" 33.....	
" 34.....	
" 35.....	
" 36.....	

For Convenience of Auditor in Showing Boundaries of School Districts

Township No. Township No 45 - Range - 31 Mer. P. M.



Returns Showing Grain Received in or Handled by Elevators, Warehouses and Mills in the \_\_\_\_\_ of \_\_\_\_\_ in the \_\_\_\_\_  
 County of \_\_\_\_\_ for the Year Ending May 1, 1962.

NAMES OF OWNERS	ADDRESS	SUBDIVISION 1			Total Subdivision 1 No. Bushels	★ Tax of ½ Mill per Bushel Dollars Cts.	SUBDIVISION 2					Total Subdivision 2 No. Bushels	★ Tax of ¼ Mill Per Bushel Dollars Cts.	★ Total Tax Dollars Cts.	REMARKS	
		Bushels of Wheat	Bushels of Soy Beans	Bushels of Flax			Bushels of Rye	Bushels of Oats	Bushels of Buckwheat	Bushels of Other Grains						

Note ★ Assessors will not fill these Columns

Ap. Name  
 Point on  
 Inn  
 Harding Jordan  
 Addition  
 Supplemantal Plat  
 B-20-96-Ming Beach  
 Auditor's  
 Plat # 5  
 Little We  
 Look-Out

Real Estate

SUMMARY OF TAX COLLECTION

Original Levy	- - - - -	\$ 5,8970.44	
Additions	- - - - -	\$ _____	
Abatements	- - - - -	\$ _____	\$ 395.16
			\$ 5,595.28

COLLECTIONS

March Settlement	- - - - -	\$ 3036.27	
June Settlement	- - - - -	\$ 1369.32	
November Settlement	- - - - -	\$ 11,595.84	
January Settlement	- - - - -	\$ 329.50	\$ 58,908.93
			\$ _____
Over Collected	- - - - -	\$ 73.66	
Under Collected	- - - - -	\$ _____	
Delinquent	- - - - -	\$ 2760.01	\$ _____
Total	- - - - -		\$ 58,595.28

Ab. Nung Inn  
 Point on  
 Harling Jordan  
 Addition  
 Supplemental Plat  
 Big E-Zo-We-King Beach  
 Auditor's  
 Plat # 3  
 Little with  
 Look-Out



FUNDS	MARCH SETTLEMENT 1962	JUNE SETTLEMENT 1963	NOV. SETTLEMENT 1963	Amount Collected from Nov. 1962 to First Monday in Jan. 1963	REDUCTIONS	Total Reductions and Collected	BALANCE UNCOLLECTED	ADDITIONS	Total Uncollected to First Monday in January, 1963
State-Non-Homestead,	702 90	197 65	167 79	250					
State-Homestead,	684 20	334 34	279 12	768					
County Revenue,	2798 01	1304 51	1101 54	3075					
County Road and Bridge,	1744 94	813 54	686 76	1917					
County Welfare,	4339 66	2023 28	1708 46	4769					
County Bond and Interest	1192 66	556 06	469 54	1311					
PERA	461 54	215 18	181 70	507					
C. Nurse	79 39	37 02	31 26	87					
C. N. Bldg	174 49	81 35	68 70	192					
Town Revenue,	151 81	70 78	59 77	167					
Town Road and Bridge,	354 22	165 15	139 44	389					
Town State Loan,									
300	151 81	70 78	59 77	167					
School Local 1 Mill,									
School Special,	4281 94	1573 69	1426 75	4784					
School State Loan,									
Deficiency	10469 62	4881 25	4121 75	11504					
Tuition									
Transportation									
C. O	697 98	325 42	274 79	767					
B. V. G	1308 71	610 15	515 22	1438					
PERA	610 73	284 74	240 43	671					
C. W. Bldg.	32 28	15 05	12 71	35					
Agri Assn	43 62	20 33	17 17	49					
Transp.	88 76	39 05	32 97	73					
	30364 27	13619 32	11595 84	32960					

	SCHOOL DISTRICT NO.	LOCAL 1 MILL	SPECIAL	STATE LOAN	Deficiency	c. o.	B. V. G	PERA	TOTALS
MARCH SETTLEMENT	School District No.								
	115a		80 39		385 88	25 73	48 24	22 51	562 75
	115na		4201 55		10083 74	672 25	1260 47	588 22	16806 23
	Totals		4281 94		10469 62	697 98	1308 71	610 73	17368 98
JUNE SETTLEMENT	School District No.								
	115a		460 15		2208 74	147 25	276 09	128 84	3221 07
	115na		1113 54		2672 51	178 17	334 06	155 90	7454 18
	Totals		1573 69		4881 25	325 42	610 15	284 74	7675 25
NOVEMBER SETTLEMENT	School District No.								
	115a		290 65		1395 11	73 01	174 39	81 38	3034 54
	115na		1136 10		2726 64	181 78	340 28	159 05	4544 40
	Totals		1426 75		4121 75	274 79	515 22	240 43	6578 94
NOVEMBER to JANUARY	School District No.								
	115na		4794		11504	767	1438	671	19174
	Totals		4794		11504	767	1438	671	19174
ADDITIONS	School District No.								
	Totals								
	Totals								
REDUCTIONS	School District No.								
	Totals								
	Totals								

Real Estate  
 Auditor's  
 Plat # 3  
 Little Hill  
 Look-Out  
 Supplemental Plat  
 Big 2-20-Me-Ning Beach  
 Harding Jondahl  
 Addition  
 Inn  
 Point  
 Ab

Assessor's Return of Exempt Real Property in the \_\_\_\_\_ of \_\_\_\_\_ County of \_\_\_\_\_, Minnesota, for the Year 1962

FORM 2 MILLER-DAVIS CO., MINNEAPOLIS

NAMES OF OWNERS	DESCRIPTION					FOR WHAT PURPOSE USED	TRUE AND FULL VALUATIONS				ASSESSED VALUATIONS		REMARKS
	SUBDIVISION	Sec. or Lot	Town or Block	Range	No of Acres		LAND Exclusive of Structures and Improvements Dollars	BUILDINGS and Other Structures Dollars	MACHINERY Permanently Attached to Real Estate Dollars	TOTAL True and Full Value Dollars	Rural Including Machinery	All Other	
											Acres	100ths	
Village / Clear Lake	SE 1/4 NW 1/4 SE 1/4	9	145	31	10		180	60	240	80			
Village / Canby	SW 1/4 SW 1/4	15	145	31	40		600		600	200			
Pike Bay Township	W 33' of East 133' of S 54 8' of SE 1/4 NE 1/4	16	145	31			45		45	15			

Real Estate

Ap. Nung Inn  
Point on  
Harding Jordan  
Addition  
Supplemental Plat  
Big E-Co-Me-Ming Beach  
Auditor's  
Plat # 3  
Little Wolf  
Look-Out

Assessment Roll and Tax List of Real Property in the Town of Pike Bay of Pike Bay  
\* Indicate Type of Property: R-Residential, C-Commercial, I-Industrial, U-Utility, F-Farm, L-Lakeshore, T-Timber, M-Mineral

Form 5CD MILLER-DAVIS CO., MINNEAPOLIS

IN WHOSE NAME ASSESSED	DESCRIPTION OF PROPERTY				No. School District	Indicate Homestead Yes or No	Agricultural Rec. Yes or No	Indicate Type of Property	TRUE AND FULL VALUATIONS												FINAL EQUALIZED VALUE	
	SUBDIVISION	Sec. or Lot	Town or Block	Rng.					Number of Acres of Land Acres 100ths	LAND Exclusive of Structures and Improvements			BUILDINGS and Other Structures			MACHINERY Permanently Attached to Real Estate			TOTAL True and Full Value			
										Dollars	Dollars	Dollars	Dollars	Dollars	Dollars	Dollars	Dollars	Dollars	Dollars	Dollars		Dollars
	ASSESED VALUATIONS				RURAL		ALL OTHER					MACHINERY Permanently Attached to Real Estate		Seasonal and Recreational Cabins			TOTAL ASSESSED VALUE	Total Assessed Value as Equalized by the Board of Review	Dollars			
						Homestead Up to \$4,000 20%	Over \$4,000 and Non-Homestead 33 1/4%	Timber Land Class 3e 20%	Homestead Up to \$4,000 25%	Over \$4,000 and Non-Homestead 40%	33 1/4%	33 1/4%	Dollars	Dollars	Dollars	Dollars	Dollars	Dollars	Dollars			

1 NEW of NE 1/4 1 14531 115

6 NEW of NW 1/4  
7 NW 1/4 of NW 1/4 } GOV'T LOT 1 PLATTED (Star Island)

8 SW 1/4 of NW 1/4

9 SE 1/4 of NW 1/4

11 NE 1/4 of SW 1/4

12 NW 1/4 of SW 1/4

13 SW 1/4 of SW 1/4

14 SE 1/4 of SW 1/4

16 NE 1/4 of SE 1/4

17 NW 1/4 of SE 1/4

18 SW 1/4 of SE 1/4

19 SE 1/4 of SE 1/4

Cass County, Minnesota, for Taxes for the Year 1962.

SOLD FOR TAXES	VALUATIONS BY SCHOOL DISTRICTS AS EQUALIZED BY DEPARTMENT OF TAXATION						Tax Including State Homestead Mills	State Tax on Non-Homestead Mills	SPECIAL TAXES	SPECIAL TAXES	TOTAL TAXES	PAID	WHEN PAID	Number of Receipt	March Settlement 1963	June Settlement 1963	Penalty	November Settlement 1963	Penalty	Collections to First Monday in January 1964	Penalty	Delinquent on First Monday in January 1964	Total Delinquent Tax and Penalty	REMARKS			
	District No.	District No.	District No.	District No.	District No.	District No.																					
	Rate..... Mills	Rate..... Mills	Rate..... Mills	Rate..... Mills	Rate..... Mills	Rate..... Mills																					
1																											
2																											
3																											
4																											
5																											
6																											
7																											
8																											
9																											
10																											
11																											
12																											
13																											
14																											
15																											
16																											
17																											
18																											
19																											
20																											

Ap Nung Inn  
on  
Handling Jonathan  
Addition  
Big B-Go-We-Ning Beach  
Supplemental Plat  
Auditor's  
Plat # 3  
Little Pond  
Look-out





Assessment Roll and Tax List of Real Property in the Town of Elk Bay

\* Indicate Type of Property: R-Residential, C-Commercial, I-Industrial, U-Utility, F-Farm, L-Lakeshore, T-Timber, M-Mineral

Cass County, Minnesota, for Taxes for the Year 1962.

IN WHOSE NAME ASSESSED	DESCRIPTION OF PROPERTY				No. School District	Indicate Home-stead Yes or No	Agricultural Rec. Yes or No	Indicate Type of Property	TRUE AND FULL VALUATIONS								FINAL EQUALIZED VALUE	SOLD FOR TAXES	VALUATIONS BY SCHOOL DISTRICTS AS EQUALIZED BY DEPARTMENT OF TAXATION							Tax Including State Homestead	State Tax on Non-Homestead	SPECIAL TAXES	SPECIAL TAXES	TOTAL TAXES	PAID	WHEN PAID	Number of Receipt	March Settlement 1963	June Settlement 1963	Penalty	November Settlement 1963	Penalty	Collections to First Monday in January 1964	Penalty	Delinquent on First Monday in January 1964	Total Delinquent Tax and Penalty	REMARKS																	
	SUBDIVISION	Sec. or Lot	Town or Block	No. Acres of Land					LAND Exclusive of Structures and Improvements	BUILDINGS and Other Structures	MACHINERY Permanently Attached to Real Estate	TOTAL True and Full Value	RURAL		ALL OTHER				TOTAL ASSESSED VALUE	Total Assessed Value as Equalized by the Board of Review	District No.	District No.	District No.	District No.	Rate																			Rate	Rate	Rate	Rate	Rate	Rate	Rate	Rate	Rate	Rate	Rate	Rate	Rate	Rate	Rate		
													Homestead Up to \$4,000 20%	Over \$4,000 and Non-Homestead 33 1/3%	Timber Land Class 3e 20%	Homestead Up to \$4,000 25%					Over \$4,000 and Non-Homestead 40%	Permanently Attached to Real Estate 33 1/3%	Seasonal and Recreational Cabins 33 1/3%	District No.	District No.																			District No.	District No.	Mills	Mills	Mills	Mills	Mills	Mills	Mills	Mills	Mills	Mills	Mills	Mills	Mills	Mills	Mills
<i>Frank + Elizabeth Schneider</i>	GOVT LOT 1			1.47 acs			F																																																					
" "	GOVT LOT 1			1.47 acs			L																																																					
<i>Thomas + Josephine Liccardo</i>	GOVT LOT 3			23.75			L																																																					
<i>Frank + Elizabeth Schneider</i>	GOVT LOT 2			35.25			R																																																					
<i>Melvin L. + Bessie M. Newstrand</i>	1/2 SW of NW 4			20			R																																																					
<i>Lelah + Bessie Myrtle Wilson</i>	SE 1/4 of NW 4			40			T																																																					
<i>Clarence + Dorothy Larmenter</i>	1/2 SW of NW 4			20			T																																																					
<i>George F. + Pearl H. Deal</i>	GOVT LOT 5			28.75			R																																																					
				262.22				1065	8453	9718	1040	1506																																																
								1428	12559	13981	1132	2776																																																

Assessor's Office  
 Auditor's Office  
 Tax Collector's Office  
 Clerk's Office  
 Treasurer's Office  
 Sheriff's Office  
 County Engineer's Office  
 County Board of Health  
 County Board of Supervisors  
 County Board of Education  
 County Board of Commissioners  
 County Board of Adjustment  
 County Board of Equalization  
 County Board of Zoning  
 County Board of Public Safety  
 County Board of Social Services  
 County Board of Mental Health  
 County Board of Corrections  
 County Board of Human Resources  
 County Board of Community Development  
 County Board of Economic Development  
 County Board of Environmental Control  
 County Board of Information Technology  
 County Board of Planning  
 County Board of Transportation  
 County Board of Utilities  
 County Board of Water Management  
 County Board of Waste Management  
 County Board of Parks and Recreation  
 County Board of Cultural Arts  
 County Board of Historical Preservation  
 County Board of Genealogy  
 County Board of Genealogy and History

Assessment Roll and Tax List of Real Property in the Loun of Pike Bay

Form 501 MILLER-DAVIS CO., MINNEAPOLIS

\* Indicate Type of Property: R-Residential, C-Commercial, I-Industrial, U-Utility, F-Farm, L-Lakeshore, T-Timber, M-Mineral

Cass County, Minnesota, for Taxes for the Year 1962.

Table with columns: IN WHOSE NAME ASSESSED, DESCRIPTION OF PROPERTY, TRUE AND FULL VALUATIONS, ASSESSED VALUATIONS, VALUATIONS BY SCHOOL DISTRICTS AS EQUALIZED BY DEPARTMENT OF TAXATION, and tax payment schedule (PAID, WHEN PAID, Number of Receipt, March Settlement, June Settlement, Penalty, November Settlement, Collections to First Monday in January 1964, Delinquent on First Monday in January 1964, Total Delinquent Tax and Penalty, REMARKS).

Harding, Jonathan; Auditor's Plat # 3; Littleton Look-Out

Assessment Roll and Tax List of Real Property in the Town of Pike Bay

\* Indicate Type of Property: R-Residential, C-Commercial, I-Industrial, U-Utility, F-Farm, L-Lakeshore, T-Timber, M-Mineral

Cass County, Minnesota, for Taxes for the Year 1962.

Main table with columns: IN WHOSE NAME ASSESSED, DESCRIPTION OF PROPERTY, TRUE AND FULL VALUATIONS, ASSESSED VALUATIONS, VALUATIONS BY SCHOOL DISTRICTS AS EQUALIZED BY DEPARTMENT OF TAXATION, TAXES, PAID, WHEN PAID, etc.

Real Estate

Ab Nung Point on

Harding Jonathan Addition

Supplemental Plat B-C-E-20-W-Ming Beach

Auditor's Plat # 3

Little Wolf

Assessment Roll and Tax List of Real Property in the Town of Pike Bay

\* Indicate Type of Property: R-Residential, C-Commercial, I-Industrial, U-Utility, F-Farm, L-Lakeshore, T-Timber, M-Mineral

Cass County, Minnesota, for Taxes for the Year 1962.

IN WHOSE NAME ASSESSED	DESCRIPTION OF PROPERTY				No. School District	Indicate Home-stead Yes or No	Agri. or Seas. Rec. Yes or No	* Indicate Type of Property	TRUE AND FULL VALUATIONS											FINAL EQUALIZED VALUE
	SUBDIVISION	Sec. or Lot	Town or Block	Rng.					Number of Acres of Land		LAND Exclusive of Structures and Improvements	BUILDINGS and Other Structures	MACHINERY Permanently Attached to Real Estate	TOTAL True and Full Value	ASSESSED VALUATIONS				Total Assessed Value as Equalized by the Board of Review	
									Acres	100ths					RURAL	ALL OTHER	MACHINERY Permanently Attached to Real Estate	Seasonal and Recreational Cabins		
Helmer Hanson	All of GOVT LOT 1 EXCEPT N E 1/4 of N E 1/4	6	145	31	3169	115	yr	T	180				180	36			36			
Melvin L. & Bessie M. Neuström	GOVT LOT 2				3557		No yr	F	320	325			645		215		215			
"	"				40		No yr	F	240				240		80		80			
Lily J. Hanson	"				40		yr	F	275	900			1175	235			235			
"	"				211		yr	T	15				15	3			3			
F. J. Christensen	GOVT LOT 3				3734		No yr	T	222				222	74			74			
A. F. Christensen	GOVT LOT 4				3874		yr	F	250	450			700	140			140			
Clarence R. Schmidt	GOVT LOT 5				3760		yr	F	250	615			865	173			173			
Henry J., Clarence R., Ronald J., Henry J. Schmidt	"						yr	T	240				240	48			48			
Albert J. & Agnes M. Peterson	GOVT LOT 6				5075		yr	C	585	500 150			2977	267	547		814			
"	"						No		390	1095 1642			1985	178	365		543			
Mathew N. & Edvina A. Mingghor	"				40		No yr	F	234				234	78			78			
Albert J. & Agnes M. Peterson	"				40		yr	T	240				240	48			48			
Boyd N. & Veretta J. Schluter	GOVT LOT 7				5485		yr	F	550	520			1070	214			214			
Mathew N. & Edvina A. Mingghor	"				40		No yr	F	240	600			840	280			280			
					48965				3646	5005			8651	1075	1092		2167			
									3841	5802			9643	1164	1274		2438			

SOLD FOR TAXES	VALUATIONS BY SCHOOL DISTRICTS AS EQUALIZED BY DEPARTMENT OF TAXATION						Tax Including State Homestead	State Tax on Non-Homestead	SPECIAL TAXES	SPECIAL TAXES	TOTAL TAXES	PAID	WHEN PAID	Number of Receipt	March Settlement 1963	June Settlement 1963	November Settlement 1963	Penalty	Collections to First Monday in January 1964	Penalty	Delinquent on First Monday in January 1964	Total Delinquent Tax and Penalty	REMARKS
	District No.	District No.	District No.	District No.	District No.	District No.																	
	Rate	Rate	Rate	Rate	Rate	Rate																	
1																							
2																							
3																							
4																							
5																							
6																							
7																							
8																							
9																							
10																							
11																							
12																							
13																							
14																							
15																							
16																							
17																							
18																							
19																							
20																							

Real Estate

Supplemental Plat  
Bag B-20-Me-Ming Beach  
Auditor's Plat # 3  
Little No. Look-out

Assessment Roll and Tax List of Real Property in the Town of Pike Bay, Cass County, Minnesota, for Taxes for the Year 1962.

Cass County, Minnesota, for Taxes for the Year 1962.

Table with columns: IN WHOSE NAME ASSESSED, DESCRIPTION OF PROPERTY, TRUE AND FULL VALUATIONS, ASSESSED VALUATIONS, VALUATIONS BY SCHOOL DISTRICTS AS EQUALIZED BY DEPARTMENT OF TAXATION, TAXES, PAID, WHEN PAID, Number of Receipt, March Settlement 1963, June Settlement 1963, Penalty, November Settlement 1963, Penalty, Collections to First Monday in January 1964, Delinquent on First Monday in January 1964, Total Delinquent Tax and Penalty, REMARKS.

Vertical text on the right edge of the page, including 'Auditor's Office' and 'Little Wolf Look-out'.





Assessment Roll and Tax List of Real Property in the Town of Pike Bay

Form SCD MILLER-DAVIS CO., MINNEAPOLIS

\* Indicate Type of Property: R-Residential, C-Commercial, I-Industrial, U-Utility, F-Farm, L-Lakeshore, T-Timber, M-Mineral

Table with columns: IN WHOSE NAME ASSESSED, DESCRIPTION OF PROPERTY, TRUE AND FULL VALUATIONS, ASSESSED VALUATIONS, FINAL EQUALIZED VALUE. Includes handwritten entries for various property owners like H.H. Richmond and Dean A. Christensen.

(Contd on next page)

Cass County, Minnesota, for Taxes for the Year 1962.

Table with columns: VALUATIONS BY SCHOOL DISTRICTS AS EQUALIZED BY DEPARTMENT OF TAXATION, TAXES, PAID, WHEN PAID, Number of Receipt, March Settlement, June Settlement, November Settlement, Collections to First Monday in January, Delinquent on First Monday in January, Total Delinquent Tax and Penalty, REMARKS. Includes handwritten entries and tax calculations.

Vertical text on the right edge of the page: Auditor's Office, Little Rock, Ark., and other administrative markings.



Assessment Roll and Tax List of Real Property in the Sown of \_\_\_\_\_  
 \* Indicate Type of Property: R-Residential, C-Commercial, I-Industrial, U-Utility, F-Farm, L-Lakeshore, T-Timber, M-Mineral

Form 500 MILLER-DAVIS CO., MINNEAPOLIS

IN WHOSE NAME ASSESSED	DESCRIPTION OF PROPERTY			No. School District	Indicate Homestead Yes or No	Agri. or Recr. Yes or No	Indicate Type of Property	TRUE AND FULL VALUATIONS										FINAL EQUALIZED VALUE				
	SUBDIVISION	Sec. or Lot	Town or Block Rng.					Number of Acres of Land	LAND Exclusive of Structures and Improvements	BUILDINGS and Other Structures	MACHINERY Permanently Attached to Real Estate	TOTAL True and Full Value	RURAL			ALL OTHER				TOTAL ASSESSED VALUE	Total Assessed Value as Equalized by the Board of Review	
													Acres 100ths	Homestead Up to \$4,000 20%	Over \$4,000 and Non-Homestead 33 1/3%	Timber Land Class 3e 20%	Homestead Up to \$4,000 25%		Over \$4,000 and Non-Homestead 40%			MACHINERY Permanently Attached to Real Estate 33 1/3%
1	NE 1/4 of NE 1/4																					
2	NW 1/4 of NE 1/4																					
3	SW 1/4 of NE 1/4																					
4	SE 1/4 of NE 1/4																					
5																						
6	NE 1/4 of NW 1/4																					
7	NW 1/4 of NW 1/4																					
8	SW 1/4 of NW 1/4																					
9	SE 1/4 of NW 1/4																					
10																						
11	NE 1/4 of SW 1/4																					
12	NW 1/4 of SW 1/4																					
13	SW 1/4 of SW 1/4																					
14	SE 1/4 of SW 1/4																					
15																						
16	NE 1/4 of SE 1/4																					
17	NW 1/4 of SE 1/4																					
18	SW 1/4 of SE 1/4																					
19	SE 1/4 of SE 1/4																					
20																						

Cass County, Minnesota, for Taxes for the Year 1962.

SOLD FOR TAXES	VALUATIONS BY SCHOOL DISTRICTS AS EQUALIZED BY DEPARTMENT OF TAXATION						Tax Including State Homestead	State Tax on Non-Homestead	SPECIAL TAXES	SPECIAL TAXES	TOTAL TAXES	PAID	WHEN PAID	Number of Receipt	March Settlement 1963	June Settlement 1963	Penalty November 1963	Penalty Collections to First Monday in January 1964	Penalty Delinquent on First Monday in January 1964	Total Delinquent Tax and Penalty	REMARKS
	District No.	District No.	District No.	District No.	District No.	District No.															
	Rate	Rate	Rate	Rate	Rate	Rate															
	Mills	Mills	Mills	Mills	Mills	Mills															
1																					
2																					
3																					
4																					
5																					
6																					
7																					
8																					
9																					
10																					
11																					
12																					
13																					
14																					
15																					
16																					
17																					
18																					
19																					
20																					

Auditor's Office  
 Supplemental Plat  
 Plat # 3  
 Little Wolf  
 Look-Out



Assessment Roll and Tax List of Real Property in the Town of Pike Bay, Cass County, Minnesota, for Taxes for the Year 1962.

\* Indicate Type of Property: R-Residential, C-Commercial, I-Industrial, U-Utility, F-Farm, L-Lakeshore, T-Timber, M-Mineral

Form 501 - MILLER-DAVIS CO., MINNEAPOLIS

Table with columns: IN WHOSE NAME ASSESSED, DESCRIPTION OF PROPERTY, TRUE AND FULL VALUATIONS, ASSESSED VALUATIONS, and FINAL EQUALIZED VALUE. Includes handwritten entries like 'Caroline Twin Darr (Indian)', 'John Joseph Kind (Indian)', and 'Northwest Paper Company'.

Cass County, Minnesota, for Taxes for the Year 1962.

Table with columns: SOLD FOR TAXES, VALUATIONS BY SCHOOL DISTRICTS AS EQUALIZED BY DEPARTMENT OF TAXATION, Tax including State Homestead, State Tax on Non-Homestead, SPECIAL TAXES, TOTAL TAXES, PAID, WHEN PAID, Number of Receipt, March Settlement 1963, June Settlement 1963, Penalty Settlement 1963, Collections to First Monday in January 1964, Delinquent on First Monday in January 1964, Total Delinquent Tax and Penalty, and REMARKS.

Vertical text on the right edge: Auditor's Office, Little North, Look-Out, B-20-96-Ming Beach, Supplemental Plat.



Assessment Roll and Tax List of Real Property in the

*Down* of *Lake Bay*

\* Indicate Type of Property: R-Residential, C-Commercial, I-Industrial, U-Utility, F-Farm, L-Lakeshore, T-Timber, M-Mineral

Cass County, Minnesota, for Taxes for the Year 1962.

SCD MILLER-DAVIS CO., MINNEAPOLIS

IN WHOSE NAME ASSESSED	DESCRIPTION OF PROPERTY				No. School District	Indicate Homestead Yes or No	Agri. or Recr. Yes or No	Indicate Type of Property	TRUE AND FULL VALUATIONS		ASSESSED VALUATIONS									FINAL EQUALIZED VALUE Dollars							
	SUBDIVISION	Sec. or Lot	Town or Block	Rng. Acres of Land					LAND Exclusive of Structures and Improvements Dollars	BUILDINGS and Other Structures Dollars	MACHINERY Permanently Attached to Real Estate Dollars	TOTAL True and Full Value Dollars	RURAL		ALL OTHER												
													Homestead Up to \$4,000 20%	Over \$4,000 and Non-Homestead 33 1/4%	Timber Land Class 3e 20%	Homestead Up to \$4,000 25%	Over \$4,000 and Non-Homestead 40%	MACHINERY Permanently Attached to Real Estate 33 1/4%	Seasonal and Recreational Cabins 33 1/4%		TOTAL ASSESSED VALUE Dollars	Total Assessed Value as Equalized by the Board of Review Dollars					
			1214531	115																							
U. S. of America			GOV'T LOT 1																								

SOLD FOR TAXES	VALUATIONS BY SCHOOL DISTRICTS AS EQUALIZED BY DEPARTMENT OF TAXATION												Tax Including State Homestead \$ cts.	State Tax on Non-Homestead \$ cts.	SPECIAL TAXES \$ cts.	SPECIAL TAXES \$ cts.	TOTAL TAXES \$ cts.	PAID	WHEN PAID Month Day Year	Number of Receipt	March Settlement 1963 \$ cts.	June Settlement 1963 \$ cts.	November Settlement 1963 \$ cts.	Penalty \$ cts.	Collections to First Monday in January 1964 \$ cts.	Penalty \$ cts.	Delinquent on First Monday in January 1964 \$ cts.	Total Delinquent Tax and Penalty \$ cts.	REMARKS															
	District No. Rate Mills	District No. Rate Mills	District No. Rate Mills	District No. Rate Mills	District No. Rate Mills	District No. Rate Mills	District No. Rate Mills	District No. Rate Mills	District No. Rate Mills	District No. Rate Mills																																		

Auditor's Office  
 307 1/2  
 Little Wolf  
 Look-Out  
 Auditor's Office  
 Bldg. B-20-16-117  
 Beach  
 Supplemental Plat  
 Harding Jondahl  
 Addition  
 on









Assessment Roll and Tax List of Real Property in the Town of Pike Bay

\* Indicate Type of Property: R-Residential, C-Commercial, I-Industrial, U-Utility, F-Farm, L-Lakeshore, T-Timber, M-Mineral

Table with columns: IN WHOSE NAME ASSESSED, DESCRIPTION OF PROPERTY, TRUE AND FULL VALUATIONS (LAND, BUILDINGS, MACHINERY, TOTAL), ASSESSED VALUATIONS (RURAL, ALL OTHER, TOTAL ASSESSED), FINAL EQUALIZED VALUE, and REMARKS.

(Continued on next page)

Cass County, Minnesota, for Taxes for the Year 1962.

Table with columns: SOLD FOR TAXES, VALUATIONS BY SCHOOL DISTRICTS AS EQUALIZED BY DEPARTMENT OF TAXATION, TAX INCLUDING STATE HOMESTEAD, SPECIAL TAXES, TOTAL TAXES, PAID, WHEN PAID, Number of Receipt, March, June, November Settlements, Collections to First Monday in January, Delinquent on First Monday in January, Total Delinquent Tax and Penalty, REMARKS.

A NA

Vertical text on the right edge: Harding, Jondahl, Supplemental Plat, Auditor's Plat # 3, Little Wolf, Look-Out.

Assessment Roll and Tax List of Real Property in the Town of Pike Bay

\* Indicate Type of Property: R-Residential, C-Commercial, I-Industrial, U-Utility, F-Farm, L-Lakeshore, T-Timber, M-Mineral

Form SCD MILLER-DAVIS CO., MINNEAPOLIS

Table with columns: IN WHOSE NAME ASSESSED, DESCRIPTION OF PROPERTY, TRUE AND FULL VALUATIONS (LAND, BUILDINGS, MACHINERY, TOTAL), ASSESSED VALUATIONS (RURAL, ALL OTHER, MACHINERY, Seasonal and Recreational Cabins, TOTAL ASSESSED VALUE), Total Assessed Value as Equalized by the Board of Review, FINAL EQUALIZED VALUE.

Cass County, Minnesota, for Taxes for the Year 1962.

Table with columns: SOLD FOR TAXES, VALUATIONS BY SCHOOL DISTRICTS AS EQUALIZED BY DEPARTMENT OF TAXATION (District No., Rate, Mills), Tax Including State Homestead, State Tax on Non-Homestead, SPECIAL TAXES, TOTAL TAXES, PAID, WHEN PAID, Number of Receipt, March Settlement 1963, June Settlement 1963, November Settlement 1963, Collections to First Monday in January 1964, Delinquent on First Monday in January 1964, Total Delinquent Tax and Penalty, REMARKS.

Vertical text on the right edge: Auditor's Office, Little Rock, Look-Out, Auditor's Office, Supplemental Plat, Plat # 3, Harding Jordan, Addition, Bldg. B-20-Me-Ning Beach.

SW 1/4 - SE 1/4 SEC. 16 - 145 - 31

RAINES

HWY. # 371

528'

P. ANDERSON

165'

D. BOHN

165'

C. RIGGLES

C. RIGGLES

CLIFFORD &  
CLARA RIGGLES

M. SEVERSON

302'

300'

226'

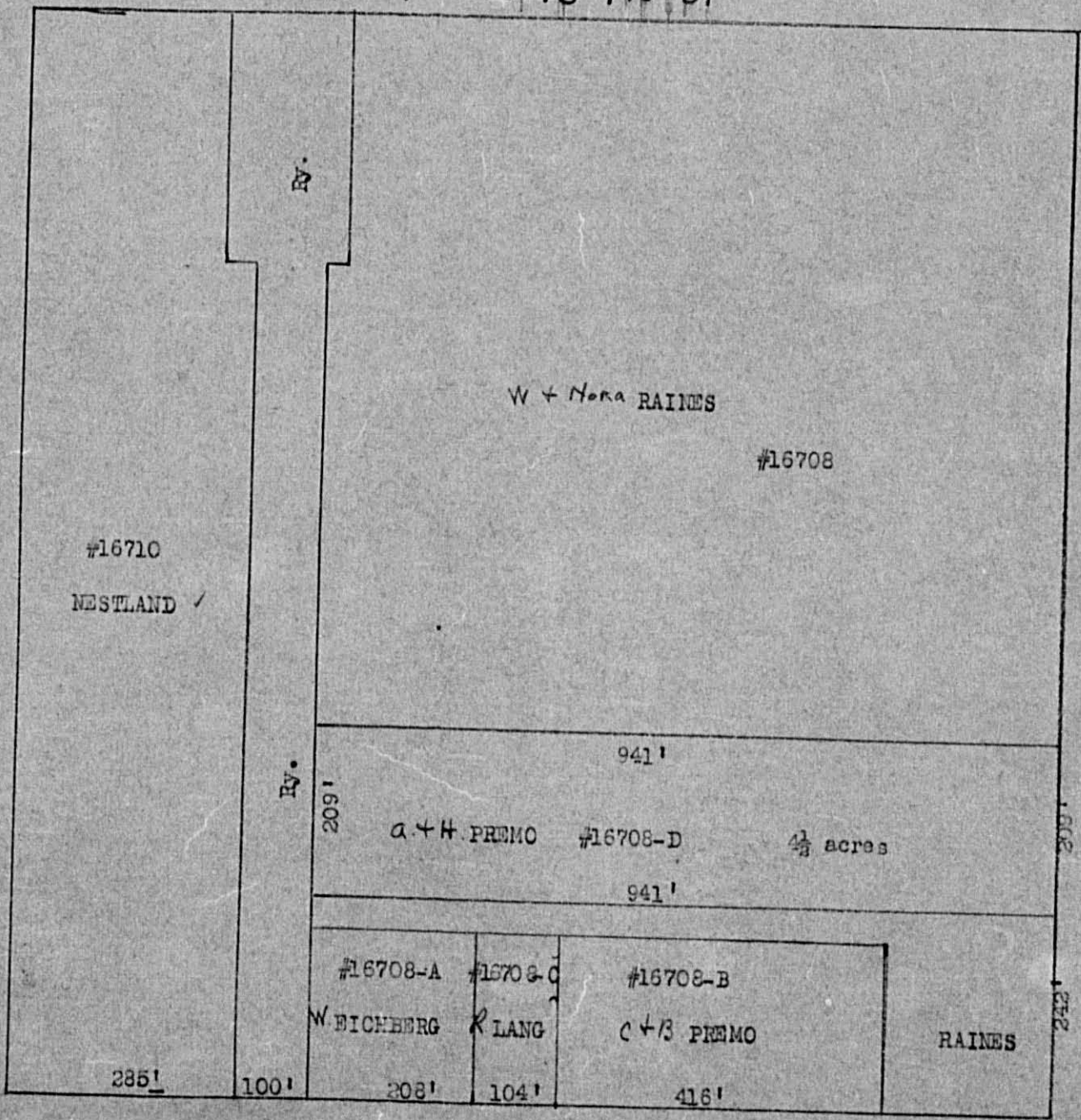
302'

302'

190'

# 371

SE 1/4 - SW 1/4 - SEC. 16 - 145 - 31



Assessment Roll and Tax List of Real Property in the Town of Pike Bay, Cass County, Minnesota, for Taxes for the Year 1962.

Form SCD MILLER-DAVIS CO., MINNEAPOLIS

\* Indicate Type of Property: R-Residential, C-Commercial, I-Industrial, U-Utility, F-Farm, L-Lakeshore, T-Timber, M-Mineral

Main table containing property descriptions, valuations, and tax information. Columns include: IN WHOSE NAME ASSESSED, DESCRIPTION OF PROPERTY, TRUE AND FULL VALUATIONS, ASSESSED VALUATIONS, VALUATIONS BY SCHOOL DISTRICTS AS EQUALIZED BY DEPARTMENT OF TAXATION, and various tax payment columns.

A NA

Handwritten entries for 'IN WHOSE NAME ASSESSED' including names like Harold L. & Donna M. Lehste, Ole Nordmarken, Floyd L. & Dagmar L. Baird, Hubert D. & Louise E. Ledeboer, Oscar & Esthelwyn Sidemoe, Otten Tail Lower Company, Joseph & Florence Hough, Louis & Bertha Bisson, Harry & Bertha B. Braman, and The Northwest Paper Company.

Handwritten entries for 'DESCRIPTION OF PROPERTY' including 'GOV'T LOT 1 except Ely 10acs', 'GOV'T LOT 2 Less Ry', 'GOV'T LOT 7 Less Ry R/W', 'GOV'T LOT 8', 'E 10 acs. of GOV'T LOT 1, Less Hy', 'GOV'T LOT 3, Less Ry R/W & Hy', 'GOV'T LOT 4, 4.12 acs & Less Hy', '4.12 acs of GOV'T LOT 4', 'Parts of GOV'T LOTS - 2-3-4', 'GOV'T LOT 2, Less Ry R/W & Less Ely 10acs. 3120.', 'N W 4 of S W 4', 'S W 4 of S W 4', 'S E 1/4 of S W 4 Less S 555' of E 624', 'S 555' of E 624' of S E 1/4 of S W 4', 'N W 4 of S E 4', 'S W 4 of S E 4', 'S 1/2 S E 4 of S E 4', 'N 1/2 of S E 1/4 of S E 4', 'MINNESOTA TREE GROWTH', and 'South next page'.

Table for 'VALUATIONS BY SCHOOL DISTRICTS AS EQUALIZED BY DEPARTMENT OF TAXATION'. Columns include District No., Rate, and various tax amounts (Mills, Cents). Includes handwritten 'SOLD FOR TAXES' and 'PAID IN FULL' notes.

Vertical text on the right edge: 'Handling Journal', 'Supplemental Plat B-20-Me-Ming Beach', 'Auditor's Plat # 3', 'Little Wolf Look-Out'.

Assessment Roll and Tax List of Real Property in the Down of Pike Bay,  
\* Indicate Type of Property: R-Residential, C-Commercial, I-Industrial, U-Utility, F-Farm, L-Lakeshore, T-Timber, M-Mineral

Form SCD - MILLER-DAVIS CO., MINNEAPOLIS

IN WHOSE NAME ASSESSED	DESCRIPTION OF PROPERTY			No. School District	Indicate Home-Stead Yes or No	Agricultural Rec. Yes or No	Indicate Type of Property	TRUE AND FULL VALUATIONS										FINAL EQUALIZED VALUE	
	SUBDIVISION	Sec. or Lot	Town or Block					Number of Acres of Land	ASSESSED VALUATIONS										
									LAND Exclusive of Structures and Improvements	BUILDINGS and Other Structures	MACHINERY Permanently Attached to Real Estate	TOTAL True and Full Value	RURAL			ALL OTHER			
			Acres 100ths	Dollars	Dollars	Dollars	Dollars	Dollars	Dollars	Dollars	Dollars	Dollars	Dollars	Dollars	Dollars	Dollars	Dollars		
State of Minnesota																			
State of Minnesota																			

Cass County, Minnesota, for Taxes for the Year 1962.

SOLD FOR TAXES	VALUATIONS BY SCHOOL DISTRICTS AS EQUALIZED BY DEPARTMENT OF TAXATION						Tax including State Homestead	State Tax on Non-Homestead	SPECIAL TAXES	SPECIAL TAXES	TOTAL TAXES	PAID	WHEN PAID	Number of Receipt	March Settlement 1961	June Settlement 1961	Penalty	November Settlement 1961	Penalty	Collections to First Monday in January 1964	Penalty	Delinquent on First Monday in January 1964	Total Delinquent Tax and Penalty	REMARKS
	District No.	District No.	District No.	District No.	District No.	District No.																		
	Rate	Rate	Rate	Rate	Rate	Rate																		

Harling, Jondahl  
Supplemental Plat  
B-20-We-Ming Beach  
Auditor's Plat # 3  
Little Hill  
Look-Out









Assessment Roll and Tax List of Real Property in the Town of Pike Bay

Form SCD-MILLER-DAVIS CO., MINNEAPOLIS

\* Indicate Type of Property: R-Residential, C-Commercial, I-Industrial, U-Utility, F-Farm, L-Lakeshore, T-Timber, M-Mineral

Table with columns: IN WHOSE NAME ASSESSED, DESCRIPTION OF PROPERTY, TRUE AND FULL VALUATIONS, ASSESSED VALUATIONS, and FINAL EQUALIZED VALUE. Includes handwritten entries like 'Wheeler Lumber Bridge & Supply Co' and 'THE NORTHWEST PAPER CO'.

Cass County, Minnesota, for Taxes for the Year 1962.

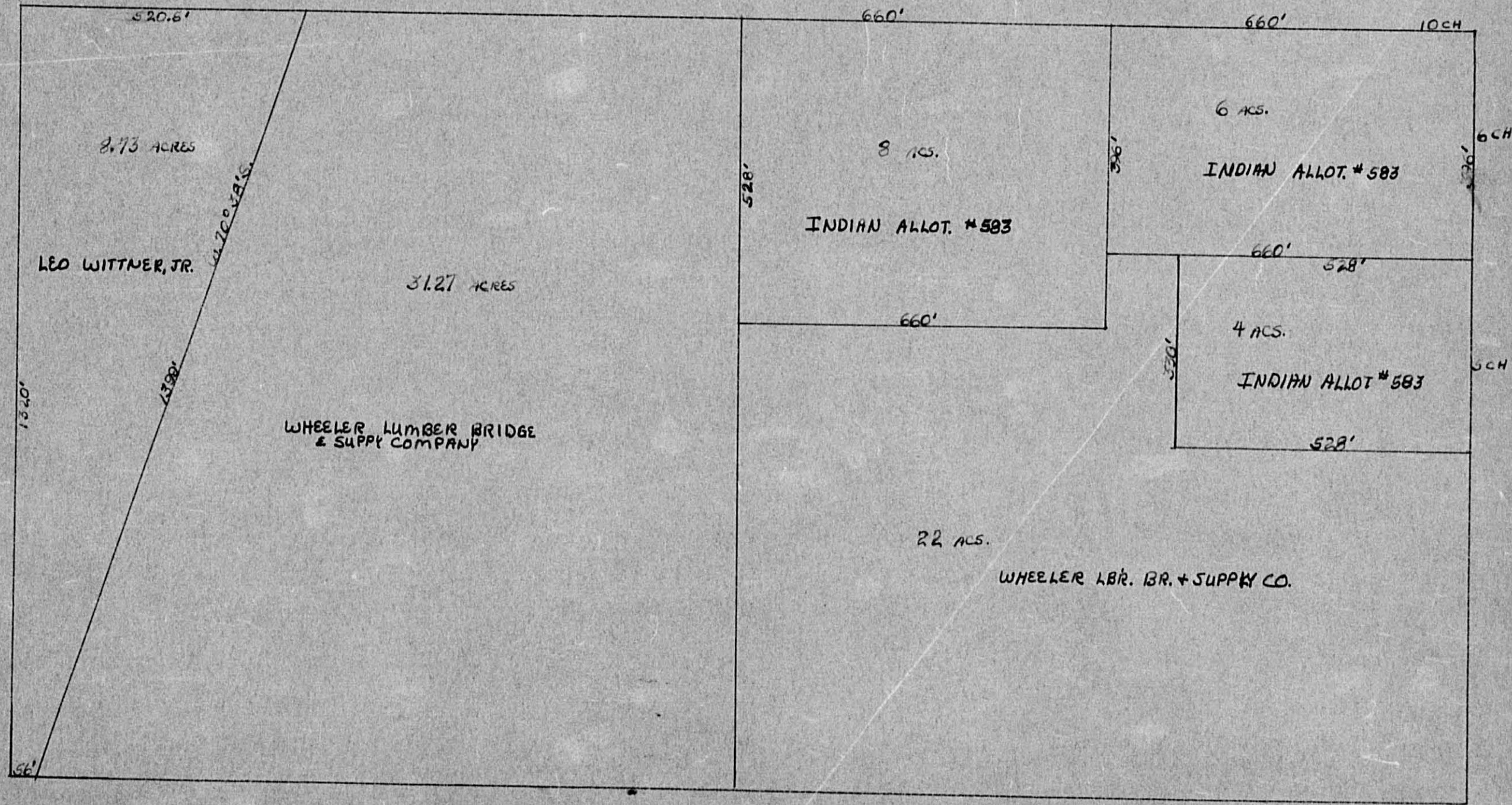
Table with columns: VALUATIONS BY SCHOOL DISTRICTS AS EQUALIZED BY DEPARTMENT OF TAXATION, TAXES, PAID, WHEN PAID, and REMARKS. Includes handwritten entries and numerical data.

Vertical text on the right edge of the page, including 'Auditor's Office' and other administrative markings.

N 1/2 - NE 1/4  
SEC. 21-145-31

NW-NE

NE-NE



520.6'

660'

660'

10 CH

8.73 ACRES

6 ACS.

8 ACS.

INDIAN ALLOT. # 583

LEO WITTNER, JR.

31.27 ACRES

INDIAN ALLOT. # 583

660'

528'

WHEELER LUMBER BRIDGE  
& SUPPLY COMPANY

660'

4 ACS.

INDIAN ALLOT # 583

1340'

1390'

528'

336'

520'

22 ACS.

WHEELER LBR. BR. + SUPPLY CO.

528'

56'

6 CH

6 CH

Assessment Roll and Tax List of Real Property in the Town of Pike Bay  
\* Indicate Type of Property: R-Residential, C-Commercial, I-Industrial, U-Utility, F-Farm, L-Lakeshore, T-Timber, M-Mineral

Cass County, Minnesota, for Taxes for the Year 1962.

IN WHOSE NAME ASSESSED	DESCRIPTION OF PROPERTY				No. School District	Indicate Homestead Yes or No	Agricultural Yes or No	Indicate Type of Property	TRUE AND FULL VALUATIONS			ASSESSED VALUATIONS							FINAL EQUALIZED VALUE		
	SUBDIVISION	Sec. or Lot	Town or Block	Rng.					Number of Acres of Land	LAND Exclusive of Structures and Improvements	BUILDINGS and Other Structures	MACHINERY Permanently Attached to Real Estate	TOTAL True and Full Value	RURAL			ALL OTHER				
														Acres	100ths	Homestead Up to \$4,000 20%	Over \$4,000 and Non-Homestead 33 1/3%	Timber Land Class 3e 20%		Homestead Up to \$4,000 25%	Over \$4,000 and Non-Homestead 40%
								Dollars	Dollars	Dollars	Dollars	Dollars	Dollars	Dollars	Dollars	Dollars	Dollars	Dollars			
U. S. of America																					
State of Minnesota																					
Oscar C. Sells																					
State of Minnesota																					
State of Minnesota																					
State of Minnesota																					

SOLD FOR TAXES	VALUATIONS BY SCHOOL DISTRICTS AS EQUALIZED BY DEPARTMENT OF TAXATION						Tax Including State Homestead	State Tax on Non-Homestead	SPECIAL TAXES	SPECIAL TAXES	TOTAL TAXES	PAID	WHEN PAID	Number of Receipt	March Settlement 1963	June Settlement 1963	November Settlement 1963	Penalty	Collections to First Monday in January 1964	Penalty	Delinquent on First Monday in January 1964	Total Delinquent Tax and Penalty	REMARKS
	District No.	District No.	District No.	District No.	District No.	District No.																	
	Rate	Rate	Rate	Rate	Rate	Rate																	

Auditor's Office  
 Little Wolf  
 Plat # 8  
 Auditor's  
 Big E-Zo-Me-Ning Beach  
 Supplemental List  
 Harding Jondahl  
 Addition

Assessment Roll and Tax List of Real Property in the Town of Pike Bay, Cass County, Minnesota, for Taxes for the Year 1962.

Cass County, Minnesota, for Taxes for the Year 1962.

Form 500 - MILLER-DAVIS CO., MINNEAPOLIS

Table with columns: IN WHOSE NAME ASSESSED, DESCRIPTION OF PROPERTY, TRUE AND FULL VALUATIONS, ASSESSED VALUATIONS, VALUATIONS BY SCHOOL DISTRICTS AS EQUALIZED BY DEPARTMENT OF TAXATION, TAX INCLUDING STATE HOMESTEAD, SPECIAL TAXES, TOTAL TAXES, PAID, WHEN PAID, Number of Receipt, March Settlement 1963, June Settlement 1963, November Settlement 1963, Collections to First Monday in January 1964, Delinquent on First Monday in January 1964, Total Delinquent Tax and Penalty, REMARKS.

316.26  
8.54  
24.90

A NA

Harling Jordan  
Supplemental Plat  
Bag B-20-Me-Ning Beach  
Auditor's  
Plat # 3  
Little North  
Look-Out









Assessment Roll and Tax List of Real Property in the Town of Pike Bay

\* Indicate Type of Property: R-Residential, C-Commercial, I-Industrial, U-Utility, F-Farm, L-Lakeshore, T-Timber, M-Mineral

Form 5CD MILLER-DAVIS CO., MINNEAPOLIS

THE NORTHWEST PAPER CO.

State of Minnesota  
State of Minnesota  
State of Minnesota  
State of Minnesota  
State of Minnesota  
Carl D. & Emily E. Foster  
State of Minnesota  
State of Minnesota  
Albert Fuhrman  
State of Minnesota  
State of Minnesota  
Albert Fuhrman  
Louis & Bertha Bisson  
" " "  
Roger A. Hanes  
Fred F. DeKith

Table with columns: IN WHOSE NAME ASSESSED, SUBDIVISION, Sec. or Lot, Town or Block, Rng., Number of Acres of Land, No. School District, Indicate Home-stead, Agr. or Seas. Rev., Indicate Type of Property, TRUE AND FULL VALUATIONS (LAND, BUILDINGS, MACHINERY, TOTAL), ASSESSED VALUATIONS (RURAL, ALL OTHER, MACHINERY, Seasonal and Recreational Cabins, TOTAL ASSESSED VALUE, Total Assessed Value as Equalized by the Board of Review), FINAL EQUALIZED VALUE.

Cass County, Minnesota, for Taxes for the Year 1962.

Table with columns: SOLD FOR TAXES, VALUATIONS BY SCHOOL DISTRICTS AS EQUALIZED BY DEPARTMENT OF TAXATION (District No., Rate, Mills), Tax including State Homestead, State Tax on Non-Homestead, SPECIAL TAXES, TOTAL TAXES, PAID, WHEN PAID, Number of Receipt, March Settlement, June Settlement, November Settlement, Collections to First Monday in January, Delinquent on First Monday in January, Total Delinquent Tax and Penalty, REMARKS.

Ab Nuns Town  
Harding, Jondahl  
Supplemental Plat  
Bldg B-20-We-Ming Beach  
Auditor's  
Plat # 3  
Little Hill  
Look-Out

Assessment Roll and Tax List of Real Property in the Town of Pike Bay, Cass County, Minnesota, for Taxes for the Year 1962.

Form 5CD MILLER-DAVIS CO., MINNEAPOLIS

Main table with columns: IN WHOSE NAME ASSESSED, DESCRIPTION OF PROPERTY, TRUE AND FULL VALUATIONS, ASSESSED VALUATIONS, VALUATIONS BY SCHOOL DISTRICTS AS EQUALIZED BY DEPARTMENT OF TAXATION, TAX INCLUDING STATE HOMESTEAD, SPECIAL TAXES, TOTAL TAXES, PAID, WHEN PAID, Number of Receipt, March Settlement 1963, June Settlement 1963, Penalty, November Settlement 1963, Penalty, Collections to First Monday in January 1964, Penalty, Delinquent on First Monday in January 1964, Total Delinquent Tax and Penalty, REMARKS.

(Contd on next page)

Vertical text on the right edge: Auditor's Plat # 3, Little Wolf Look-Out, Supplemental Plat, Harding Jordan Addition, Big 20-Me-Ning Beach.

Assessment Roll and Tax List of Real Property in the Dow of Pike Bay,  
\* Indicate Type of Property: R-Residential, C-Commercial, I-Industrial, U-Utility, F-Farm, L-Lakeshore, T-Timber, M-Mineral

Form SCD MILLER-DAVIS CO., MINNEAPOLIS

IN WHOSE NAME ASSESSED	DESCRIPTION OF PROPERTY				No. School District	Indicate Home-stead Yes or No	Agr. or Sema. Recr. Yes or No	Indicate Type of Prop-erty	TRUE AND FULL VALUATIONS										FINAL EQUALIZED VALUE			
	SUBDIVISION	Sec. or Lot	Town or Block	Rng.					Number of Acres of Land		ASSESSED VALUATIONS											
									Acres	100ths	RURAL			ALL OTHER				MACHINERY Permanently Attached to Real Estate		Seasonal and Recreational Cabins	TOTAL ASSESSED VALUE	Total Assessed Value as Equalized by the Board of Review
											Homestead Up to \$4,000 20%	Over \$4,000 and Non-Homestead 33 1/2%	Timber Land Class 3e 20%	Homestead Up to \$4,000 25%	Over \$4,000 and Non-Homestead 40%	33 1/2%	33 1/2%					
									Dollars	Dollars	Dollars	Dollars	Dollars	Dollars	Dollars	Dollars	Dollars					
	NE W of NE W	33	14531			115																
	NW W of NE W																					
	SW W of NE W																					
	SE W of NE W																					
<i>Hilding A. Kling</i>	E 1/2 of SE W of SW 1/4	20					F	185	185	37				37								
	NE W of NW W																					
	NW W of NW W																					
	SW W of NW W																					
	SE W of NW W																					
	NE W of SW W																					
	NW W of SW W																					
	SW W of SW W																					
	SE W of SW W																					
	NE W of SE W																					
	NW W of SE W																					
	SW W of SE W																					
	SE W of SE W																					
		20						185	185	37				37								

Cass County, Minnesota, for Taxes for the Year 1962.

SOLD FOR TAXES	VALUATIONS BY SCHOOL DISTRICTS AS EQUALIZED BY DEPARTMENT OF TAXATION						Tax Including State Homestead	State Tax on Non-Homestead	SPECIAL TAXES	SPECIAL TAXES	TOTAL TAXES	PAID	WHEN PAID	Number of Receipt	March Settlement 1963	June Settlement 1963	Penalty	November Settlement 1963	Penalty	Collections to First Monday in January 1964	Penalty	Delinquent on First Monday in January 1964	Total Delinquent Tax and Penalty	REMARKS
	District No.	District No.	District No. 115	District No.	District No.	District No.																		
	Rate	Rate	Rate	Rate	Rate	Rate																		
	Mills	Mills	Mills	Mills	Mills	Mills																		
	Dollars	Dollars	Dollars	Dollars	Dollars	Dollars																		
						\$ cts.	\$ cts.	\$ cts.	\$ cts.	\$ cts.		Month Day Year		\$ cts.	\$ cts.	\$ cts.	\$ cts.	\$ cts.	\$ cts.	\$ cts.	\$ cts.	\$ cts.	\$ cts.	
1												1												
2												2												
3												3												
4												4												
5												5											1st HALF PAID MAY 31 1963 2nd HALF PAID OCT 31 1963	
6												6												
7												7												
8												8												
9												9												
10												10												
11												11												
12												12												
13												13												
14												14												
15												15												
16												16												
17												17												
18												18												
19												19												
20												20												

Auditing Journal  
 Auditor's Plat # 3  
 Supplemental Plat  
 Big E-20-Me-Ning Beach  
 Little Wolf Look-Out



Assessment Roll and Tax List of Real Property in the \_\_\_\_\_ of \_\_\_\_\_

Form SCD - MILLER-DAVIS CO., MINNEAPOLIS

\* Indicate Type of Property: R-Residential, C-Commercial, I-Industrial, U-Utility, F-Farm, L-Lakeshore

IN WHOSE NAME ASSESSED	DESCRIPTION OF PROPERTY				No. School District	Indicate Homestead Yes or No	Agricultural Rec. Yes or No	Indicate Type of Property	TRUE AND FULL VALUATIONS				ASSESSED VAL.							
	SUBDIVISION	Sec. or Lot	Town or Block	Number of Acres of Land					LAND Exclusive of Structures and Improvements	BUILDINGS and Other Structures	MACHINERY Permanently Attached to Real Estate	TOTAL True and Full Value	RURAL		ALL OTHER			MACH. Attached Real E.		
													Acres 100ths	Dollars	Dollars	Dollars	Dollars		Dollars	Dollars

PAGES

36

THRU

46

BLANK

Cass County, Minnesota, for Taxes for the Year 1962.

Tax on- stead	SPECIAL TAXES		SPECIAL TAXES		TOTAL TAXES		PAID	WHEN PAID	Number of Receipt	March Settlement 1963	June Settlement 1963	Penalty 1963	November Settlement 1963	Penalty 1963	Collections to First Monday in January 1964	Penalty 1964	Delinquent on First Monday in January 1964	Total Delinquent Tax and Penalty	REMARKS	
	Mills	\$	cts.	\$	cts.	\$														cts.

AP Name on Addition

Inn

Harriet J. Jundahl

Supplemental Plat

Bag B-20-We-Ning Beach

Auditor's Plat # 3

202301

Little Wolf

Look-Out

Assessment Roll and Tax List of Real Property in the Town of Pike Bay

\* Indicate Type of Property: R-Residential, C-Commercial, I-Industrial, U-Utility, F-Farm, L-Lakeshore, T-Timber, M-Mineral

50 MILLER-DAVIS CO., MINNEAPOLIS

Table with columns: IN WHOSE NAME ASSESSED, DESCRIPTION OF PROPERTY, TRUE AND FULL VALUATIONS, ASSESSED VALUATIONS, FINAL EQUALIZED VALUE. Includes names like Florence R. Menger, Oscar R. & Hazel Martin, etc.

Cass County, Minnesota, for Taxes for the Year 1962.

Table with columns: VALUATIONS BY SCHOOL DISTRICTS AS EQUALIZED BY DEPARTMENT OF TAXATION, TAX INCLUDING STATE HOMESTEAD, SPECIAL TAXES, TOTAL TAXES, PAID, WHEN PAID, Number of Receipt, March Settlement, June Settlement, November Settlement, Collections to First Monday in January 1964, Delinquent on First Monday in January 1964, Total Delinquent Tax and Penalty, REMARKS. Includes tax amounts and payment dates.

Vertical text on the right edge: Auditor's Office, Little Hill, etc.



Assessment Roll and Tax List of Real Property in the South of Pike Bay

Form 5C MILLER-DAVIS CO., MINNEAPOLIS

\* Indicate Type of Property: R-Residential, C-Commercial, I-Industrial, U-Utility, F-Farm, L-Lakeshore, T-Timber, M-Mineral

Harding Johndahl Addition

Table with columns: IN WHOSE NAME ASSESSED, DESCRIPTION OF PROPERTY, TRUE AND FULL VALUATIONS, ASSESSED VALUATIONS, and FINAL EQUALIZED VALUE. Includes handwritten entries for Nels O. Helland, Donald L. Norenberg, Emer Kallstrom, and others.

Cass County, Minnesota, for Taxes for the Year 1962.

Table with columns: VALUATIONS BY SCHOOL DISTRICTS AS EQUALIZED BY DEPARTMENT OF TAXATION, TAX INCLUDING STATE HOMESTEAD, SPECIAL TAXES, TOTAL TAXES, PAID, WHEN PAID, and REMARKS. Includes handwritten entries for H 180, H 12, H 7, H 188, H 120, and H 533.

Highway Addition

Supplemental List Beg. B-20-Me-Ning Beach

Auditor's Plat # 3 Little Wolf



Assessment Roll and Tax List of Real Property in the town of Pike Bay, Minnesota

Form 50 MILLER-DAVIS CO., MINNEAPOLIS

\* Indicate Type of Property: R-Residential, C-Commercial, I-Industrial, U-Utility, F-Farm, L-Lakeshore, T-Timber, M-Mineral

Harding Johndahl Addition

Table with columns: IN WHOSE NAME ASSESSED, DESCRIPTION OF PROPERTY, TRUE AND FULL VALUATIONS, ASSESSED VALUATIONS, and FINAL EQUALIZED VALUE. Includes handwritten entries for Frank Sobies, Russell A. Shurley Smith, Rodney & Nina G. Mc Kenneth, Frank & Margaret Sobies, Lawrence & D'Ann Sobies, Nele & Freda A. Stabo, William & Ann M. Miller, Harry & Ruth E. Lates.

Cass County, Minnesota, for Taxes for the Year 1962.

Table with columns: VALUATIONS BY SCHOOL DISTRICTS AS EQUALIZED BY DEPARTMENT OF TAXATION, TAXES, PAID, WHEN PAID, and REMARKS. Includes handwritten entries for school districts H 76, H 19, H 188, H 325, H 510, H 9, H 324, H 12, H 143, H 5, H 375, H 165, H 106, H 151, H 177, H 15, H 20, H 261, H 15, H 117.

High School

Supplemental List Big S-20-Mc-Ning Beach

Auditor's Plat # 3

Little Wolf

63.16 Abated + refunded

Assessment Roll and Tax List of Real Property in the town of Pike Bay,  
\* Indicate Type of Property: R-Residential, C-Commercial, I-Industrial, U-Utility, F-Farm, L-Lakeshore, T-Timber, M-Mineral

Cass County, Minnesota, for Taxes for the Year 1962.

An Nunz Point

Harding Johndahl Addition

IN WHOSE NAME ASSESSED	DESCRIPTION OF PROPERTY				No. School District	Indicate Home-stead Yes or No	Agri. or Non-Agri. Yes or No	Indicate Type of Property	TRUE AND FULL VALUATIONS				ASSESSED VALUATIONS						FINAL EQUALIZED VALUE			
	SUBDIVISION	Sec. or Lot	Town or Block	Rng.					Number of Acres of Land	LAND Exclusive of Structures and Improvements	BUILDINGS and Other Structures	MACHINERY Permanently Attached to Real Estate	TOTAL True and Full Value	RURAL			ALL OTHER			TOTAL ASSESSED VALUE	Total Assessed Value as Equalized by the Board of Review	
														Acres 100ths	Dollars	Dollars	Dollars	Dollars				Dollars
Edwmt & Elsie B. Erickson	W. 124.33 of S 1/2 of 5	8	B.		115	1/2	R		60	1590				413	275	413						
" " "	S 1/2 of 9				116	1/2	R		60	40				15	10	15						
Frank & Margaret Lohrie	N 1/2 of 8 & 9				116	1/2	R		120	80				30	20	30						
									160	1060				305		305						
									240	1590				458		458						

SOLD FOR TAXES	VALUATIONS BY SCHOOL DISTRICTS AS EQUALIZED BY DEPARTMENT OF TAXATION						Tax Including State Homestead	State Tax on Non-Homestead	SPECIAL TAXES	SPECIAL TAXES	TOTAL TAXES	PAID	WHEN PAID	Number of Receipt	March Settlement 1963	June Settlement 1963	Penalty	November Settlement 1963	Penalty	Collections to First Monday in January 1964	Penalty	Delinquent on First Monday in January 1964	Total Delinquent Tax and Penalty	REMARKS																
	District No.	District No.	District No.	District No.	District No.	District No.																			Dollars	Dollars	Dollars	Dollars	Dollars	Dollars	Dollars	Dollars	Dollars	Dollars	Dollars	Dollars	Dollars	Dollars	Dollars	Dollars
	Rate	Rate	Rate	Rate	Rate	Rate																			Mills	Mills	Mills	Mills	Mills	Mills	Mills	Mills	Mills	Mills	Mills	Mills	Mills	Mills	Mills	Mills
1																																								
2																																								
3																																								
4																																								
5																																								
6																																								
7																																								
8																																								
9																																								
10																																								
11																																								
12																																								
13																																								
14																																								
15																																								
16																																								
17																																								
18																																								
19																																								
20																																								

Highway

Supplemental List

Auditor's

Little Wolf



Assessment Roll and Tax List of Real Property in the Town of Pike Bay

\* Indicate Type of Property: R-Residential, C-Commercial, I-Industrial, U-Utility, F-Farm, L-Lakeshore, T-Timber, M-Mineral

Cass County, Minnesota, for Taxes for the Year 1962.

Table with columns: IN WHOSE NAME ASSESSED, SUBDIVISION, No. School District, Indicate Homestead, Acreage, TRUE AND FULL VALUATIONS, ASSESSED VALUATIONS (RURAL, ALL OTHER, MACHINERY), TAXES, and FINAL EQUALIZED VALUE.

Table with columns: SOLD FOR TAXES, VALUATIONS BY SCHOOL DISTRICTS AS EQUALIZED BY DEPARTMENT OF TAXATION, Tax Including State Homestead, SPECIAL TAXES, PAID, WHEN PAID, Number of Receipt, March Settlement, June Settlement, November Settlement, Penalties, Collections to First Monday in January 1964, Delinquent on First Monday in January 1964, Total Delinquent Tax and Penalty, and REMARKS.

Supplemental Plat Bug E-Zo-We-Ning Beach

Harding Johndahl Addition, Auditor's Plat # 3, Little Wolf

Assessment Roll and Tax List of Real Property in the Town of Pike Bay

Cass County, Minnesota, for Taxes for the Year 1962.

an Nung Point

Haring Johndahl Addition

Supplemental Plat Bug-E-Zo-We-Ning Beach

Form 5C MILLER-DAVIS CO., MINNEAPOLIS

\* Indicate Type of Property: R-Residential, C-Commercial, I-Industrial, U-Utility, F-Farm, L-Lakeshore, T-Timber, M-Mineral

IN WHOSE NAME ASSESSED	DESCRIPTION OF PROPERTY				No. School District	TRUE AND FULL VALUATIONS				ASSESSED VALUATIONS								FINAL EQUALIZED VALUE		
	SUBDIVISION	Sec. or Lot	Town or Block	Rng. Acres of Land		LAND Exclusive of Structures and Improvements	BUILDINGS and Other Structures	MACHINERY Permanently Attached to Real Estate	TOTAL True and Full Value	RURAL		ALL OTHER			Machinery Permanently Attached to Real Estate	Seasonal and Recreational Cabins	TOTAL ASSESSED VALUE		Total Assessed Value as Equalized by the Board of Review	
										Rural Homestead Up to \$4,000	Over \$4,000 and Non-Homestead	Timber Land Class 3e	Homestead Up to \$4,000	Over \$4,000 and Non-Homestead						Seasonal and Recreational Cabins
<i>Armed S. &amp; Bertha Hughes</i>																				
<i>Henneth &amp; Howard Hudson</i>																				
"																				
"																				
<i>Ruth Engel</i>																				
"																				
"																				
"																				
<i>Carl &amp; Genevive Boombs</i>																				
"																				
"																				
"																				
<i>Leonard G. &amp; Naomi R. Strobel</i>																				
<i>Otto Larsen</i>																				
"																				

A NA

SOLD FOR TAXES	VALUATIONS BY SCHOOL DISTRICTS AS EQUALIZED BY DEPARTMENT OF TAXATION						Tax Including State Homestead	State Tax on Non-Homestead	SPECIAL TAXES	SPECIAL TAXES	TOTAL TAXES	PAID	WHEN PAID	Number of Receipt	March Settlement 1963	June Settlement 1963	Penalty	November Settlement 1963	Penalty	Collections to First Monday in January 1964	Penalty	Delinquent on First Monday in January 1964	Total Delinquent Tax and Penalty	REMARKS	
	District No.	District No.	District No.	District No.	District No.	District No.																			
	Rate	Rate	Rate	Rate	Rate	Rate																			
	Mills	Mills	Mills	Mills	Mills	Mills																			
1																									
2																									
3																									
4																									
5																									
6																									
7																									
8																									
9																									
10																									
11																									
12																									
13																									
14																									
15																									
16																									
17																									
18																									
19																									
20																									
					553	5448		6001			907		791	1078											
					820	8171		9001			1361		1186	2547											
										1186	H 1361	2547	46460												
															37522	1016									
															84998			20446			64552				

High School Addition

Auditor's Plat # 8

Assessment Roll and Tax List of Real Property in the Town of Pike Bay

\* Indicate Type of Property: R-Residential, C-Commercial, I-Industrial, U-Utility, F-Farm, L-Lakeshore, T-Timber, M-Mineral

Harding Johndahl Addition Supplemental Plat Bug E-20-We-Ning Beach

Table with columns: IN WHOSE NAME ASSESSED, DESCRIPTION OF PROPERTY, TRUE AND FULL VALUATIONS, ASSESSED VALUATIONS, FINAL EQUALIZED VALUE. Includes handwritten entries for Edna D. Hanson, Arthur P. & Borghild, Randall L. & Donna J. Pries, Otto & Mary Mae Hosenberg.

Cass County, Minnesota, for Taxes for the Year 1962.

Table with columns: SOLD FOR TAXES, VALUATIONS BY SCHOOL DISTRICTS AS EQUALIZED BY DEPARTMENT OF TAXATION, Tax Including State Homestead, State Tax on Non-Homestead, SPECIAL TAXES, TOTAL TAXES, PAID, WHEN PAID, Number of Receipt, March Settlement 1963, June Settlement 1963, November Settlement 1963, Collections to First Monday in January 1964, Delinquent on First Monday in January 1964, Total Delinquent Tax and Penalty, REMARKS. Includes handwritten entries for A NA and various tax amounts.

Vertical text on the right edge: Auditor's Plat # 3, Little Wolf Look-Out

Assessment Roll and Tax List of Real Property in the *Town of Pike Bay*

\* Indicate Type of Property: R-Residential, C-Commercial, I-Industrial, U-Utility, F-Farm, L-Lakeshore, T-Timber, M-Mineral

IN WHOSE NAME ASSESSED	DESCRIPTION OF PROPERTY					No. School District	Indicate Home-stead Yes or No	Agricult. Rec. Yes or No	Indicate Type of Property	TRUE AND FULL VALUATIONS				ASSESSED VALUATIONS								FINAL EQUALIZED VALUE
	SUBDIVISION	Sec. or Lot	Town or Block	Rng.	Number of Acres of Land					LAND Exclusive of Structures and Improvements	BUILDINGS and Other Structures	MACHINERY Permanently Attached to Real Estate	TOTAL True and Full Value	RURAL		ALL OTHER				Total Assessed Value as Equalized by the Board of Review		
														Homestead Up to \$4,000	Over \$4,000 and Non-Homestead	Timber Land Class 2e 20%	Homestead Up to \$4,000	Over \$4,000 and Non-Homestead	MACHINERY Permanently Attached to Real Estate		Seasonal and Recreational Cabins	
														Dollars	Dollars	Dollars	Dollars	Dollars	Dollars		Dollars	
<i>Edna D. Hanson</i>	<i>Supplemental Plat of Bug E-2o-We-Ning Beach</i>	<i>1</i>	<i>E</i>		<i>54</i>			<i>54</i>					<i>18</i>	<i>18</i>			<i>18</i>					
<i>Otto &amp; Mary Mae Rosenberg</i>		<i>2</i>			<i>54</i>			<i>54</i>					<i>18</i>	<i>18</i>			<i>18</i>					
<i>Lowell V &amp; Viola L. Lindberg</i>		<i>3</i>			<i>54</i>			<i>54</i>					<i>18</i>	<i>18</i>			<i>18</i>					
<i>Anna M. Hollister &amp; James L. Lambrecht</i>		<i>4</i>			<i>54</i>			<i>54</i>					<i>18</i>	<i>18</i>			<i>18</i>					
<i>Henry &amp; Caroline E. Hanson</i>		<i>5</i>			<i>54</i>			<i>54</i>					<i>18</i>	<i>18</i>			<i>18</i>					
<i>Henry J. &amp; Caroline E. Hanson</i>		<i>6</i>			<i>54</i>			<i>54</i>					<i>18</i>	<i>18</i>			<i>18</i>					
<i>Edna D. Hanson</i>		<i>7</i>			<i>54</i>			<i>54</i>					<i>18</i>	<i>18</i>			<i>18</i>					
<i>Henry J. &amp; Caroline E. Hanson</i>		<i>8</i>			<i>54</i>			<i>54</i>					<i>18</i>	<i>18</i>			<i>18</i>					
<i>Edna D. Hanson</i>		<i>9</i>			<i>54</i>			<i>54</i>					<i>18</i>	<i>18</i>			<i>18</i>					
<i>Edna D. Hanson</i>		<i>10</i>			<i>54</i>			<i>54</i>					<i>18</i>	<i>18</i>			<i>18</i>					
<i>Henry &amp; Caroline E. Hanson</i>		<i>11</i>			<i>54</i>			<i>54</i>					<i>18</i>	<i>18</i>			<i>18</i>					
<i>Henry &amp; Caroline E. Hanson</i>		<i>12</i>			<i>45</i>	<i>951</i>		<i>996</i>					<i>249</i>	<i>249</i>			<i>249</i>					
<i>Henry J. &amp; Caroline E. Hanson</i>		<i>13</i>			<i>48</i>	<i>634</i>		<i>522</i>					<i>128</i>	<i>128</i>			<i>128</i>					
<i>Edna D. Hanson</i>		<i>14</i>			<i>48</i>			<i>522</i>					<i>128</i>	<i>128</i>			<i>128</i>					
<i>Edna D. Hanson</i>		<i>15</i>			<i>54</i>			<i>54</i>					<i>18</i>	<i>18</i>			<i>18</i>					
<i>Edna D. Hanson</i>		<i>16</i>			<i>54</i>			<i>54</i>					<i>18</i>	<i>18</i>			<i>18</i>					
					<i>562</i>	<i>634</i>		<i>1196</i>					<i>182</i>	<i>182</i>			<i>182</i>					
					<i>843</i>	<i>951</i>		<i>1794</i>					<i>234</i>	<i>234</i>			<i>234</i>					

Cass County, Minnesota, for Taxes for the Year 1962.

SOLD FOR TAXES	VALUATIONS BY SCHOOL DISTRICTS AS EQUALIZED BY DEPARTMENT OF TAXATION						Tax Including State Homestead	State Tax on Non-Homestead	SPECIAL TAXES	SPECIAL TAXES	TOTAL TAXES	PAID	WHEN PAID	Number of Receipt	March Settlement 1963	June Settlement 1963	Penalty	November Settlement 1963	Penalty	Collections to First Monday in January 1964	Penalty	Delinquent on First Monday in January 1964	Total Delinquent Tax and Penalty	REMARKS
	District No.	District No.	District No.	District No.	District No.	District No.																		
	Rate	Rate	Rate	Rate	Rate	Rate																		

Supplemental Plat Bug E-2o-We-Ning Beach

Supplemental Plat Bug E-2o-We-Ning Beach

Auditor's Plat # 3

Assessment Roll and Tax List of Real Property in the Town of Pike Bay

Form 3C MILLER-DAVIS CO., MINNEAPOLIS

\* Indicate Type of Property: R-Residential, C-Commercial, I-Industrial, U-Utility, F-Farm, L-Lakeshore, T-Timber, M-Mineral

Harding Judicial Addition

Supplemental Plat Bug E-Zo-We-Ning Beach

Table with columns: IN WHOSE NAME ASSESSED, SUPPLEMENTAL PLAT SUBDIVISION, DESCRIPTION OF PROPERTY, TRUE AND FULL VALUATIONS, ASSESSED VALUATIONS, and FINAL EQUALIZED VALUE. Includes handwritten entries for names like Kathryn Olson, Melvin Lobb, John Mittelstaedt, Richard A & Anne M. Kingsley, Donald & Muriel Cole, and Gerald A. & Florence V. Fuller.

Cass County, Minnesota, for Taxes for the Year 1962.

Table with columns: VALUATIONS BY SCHOOL DISTRICTS AS EQUALIZED BY DEPARTMENT OF TAXATION, TAXES, PAID, WHEN PAID, and REMARKS. Includes handwritten notes like 'A NA' and 'SOLD FOR TAXES'.

Harding Judicial Addition

Auditor's Plat # 3 Little Wolf Look-Out



Assessment Roll and Tax List of Real Property in the Town of Pike Bay

Form 5C MILLER-DAVIS CO., MINNEAPOLIS

\* Indicate Type of Property: R-Residential, C-Commercial, I-Industrial, U-Utility, F-Farm, L-Lakeshore, T-Timber, M-Mineral

Table with columns: IN WHOSE NAME ASSESSED, DESCRIPTION OF PROPERTY, Aud. Plat #3, TRUE AND FULL VALUATIONS, ASSESSED VALUATIONS, and FINAL EQUALIZED VALUE.

Cass County, Minnesota, for Taxes for the Year 1962.

Table with columns: VALUATIONS BY SCHOOL DISTRICTS AS EQUALIZED BY DEPARTMENT OF TAXATION, TAX INCLUDING STATE HOMESTEAD, SPECIAL TAXES, TOTAL TAXES, PAID, WHEN PAID, and REMARKS.

Vertical text on the left margin: Auditor's Plat # 5, Supplemental Plat Bug E-20-16-16 Beach, Harding Jondahl Addition

Vertical text on the right margin: Auditor's Plat # 5, Supplemental Plat Bug E-20-16-16 Beach, Harding Jondahl Addition

Assessment Roll and Tax List of Real Property in the Down of Pike Bay,

Form 5C MILLER-DAVIS CO., MINNEAPOLIS

\* Indicate Type of Property: R-Residential, C-Commercial, I-Industrial, U-Utility, F-Farm, L-Lakeshore, T-Timber, M-Mineral

IN WHOSE NAME ASSESSED	DESCRIPTION OF PROPERTY			No. School District	Indicate Homestead Yes or No	Agricultural Yes or No	Indicate Type of Property	TRUE AND FULL VALUATIONS					ASSESSED VALUATIONS										Total Assessed Value as Equalized by the Board of Review	FINAL EQUALIZED VALUE				
	SUBDIVISION	Sec. or Lot	Town or Block					Number of Acres of Land	LAND Exclusive of Structures and Improvements	BUILDINGS and Other Structures	MACHINERY Permanently Attached to Real Estate	TOTAL True and Full Value	RURAL			ALL OTHER				TOTAL ASSESSED VALUE	Dollars							
													Homestead Up to \$4,000 20%	Over \$4,000 and Non-Homestead 33 1/3%	Timber Land Class 3e 20%	Homestead Up to \$4,000 25%	Over \$4,000 and Non-Homestead 40%	MACHINERY Permanent Attached to Real Estate 33 1/3%	Seasonal and Recreational Cabins 33 1/3%			Dollars			Dollars	Dollars	Dollars	Dollars
<u>First National Bank of Bemidji</u> <u>Clarakel Hill</u>	<u>Aud. Plat #3</u>	<u>13</u>	<u>less E 1/4 &amp; E 12 1/2 of W 1/4</u>	<u>115</u>	<u>No</u>	<u>No</u>	<u>R</u>	<u>45</u>				<u>45</u>																
<u>Hilda Arnold</u>	<u>E 1/2 + E 12 1/2 of W 1/2 of</u>	<u>13</u>			<u>No</u>	<u>No</u>	<u>R</u>	<u>37</u>				<u>37</u>																
<u>Harry Hill</u>		<u>14</u>			<u>No</u>	<u>No</u>	<u>R</u>	<u>74</u>				<u>74</u>																
<u>Clarakel Hill</u>		<u>15</u>			<u>No</u>	<u>No</u>	<u>R</u>	<u>73</u>	<u>720</u>			<u>792</u>																
<u>Harry Hill</u>		<u>16</u>			<u>No</u>	<u>No</u>	<u>R</u>	<u>49</u>	<u>480</u>			<u>528</u>																
<u>Thelma Wesley K. McGuire</u>		<u>17</u>			<u>No</u>	<u>No</u>	<u>C</u>	<u>40</u>	<u>450</u>			<u>510</u>																
<u>Joe W. &amp; Lauraine Cude</u>		<u>18</u>			<u>No</u>	<u>No</u>	<u>C</u>	<u>40</u>	<u>300</u>			<u>500</u>		<u>128</u>														
<u>Wesley K. McGuire</u>	<u>Lots 19 thru 24 in Cass Lake</u>	<u>25</u>			<u>No</u>	<u>No</u>	<u>R</u>	<u>48</u>				<u>48</u>		<u>13</u>														
								<u>299</u>	<u>1919</u>			<u>2218</u>		<u>394</u>	<u>12</u>			<u>304</u>	<u>40</u>									
								<u>447</u>	<u>2878</u>			<u>3325</u>		<u>591</u>	<u>18</u>			<u>605</u>	<u>914</u>									

Cass County, Minnesota, for Taxes for the Year 1962.

SOLD FOR TAXES	VALUATIONS BY SCHOOL DISTRICTS AS EQUALIZED BY DEPARTMENT OF TAXATION						Tax Including State Homestead	State Tax on Non-Homestead	SPECIAL TAXES	SPECIAL TAXES	TOTAL TAXES	PAID	WHEN PAID	Number of Receipt	March Settlement 1963	June Settlement 1963	Penalty	November Settlement 1963	Penalty	Collections to First Monday in January 1964	Penalty	Delinquent on First Monday in January 1964	Total Delinquent Tax and Penalty	REMARKS					
	District No.	District No.	District No.	District No.	District No.	District No.																							
	Rate	Rate	Rate	Rate	Rate	Rate																							
1							614	16			630																		
2																													
3 SOLD FOR TAXES							4506				4506																		
4 SOLD FOR TAXES							790	22			812																		
5 SOLD FOR TAXES							8352	22			8578																		
6																													
7							4370				4370																		
8							10890				10890																		
9																													
10																													
11																													
12																													
13																													
14																													
15																													
16																													
17																													
18																													
19																													
20																													

Supplemental Plat Bug E-20-16-Bing Beach Auditor's Plat # 3

Personal Little Wolf Look-Out

Assessment Roll and Tax List of Real Property in the Town of Down of Pike Bay

Form 5C MILLER-DAVIS CO., MINNEAPOLIS

\* Indicate Type of Property: R-Residential, C-Commercial, I-Industrial, U-Utility, F-Farm, L-Lakeshore, T-Timber, M-Mineral

Harding Jochan Addition

Supplemental Plat Bug B-20-Ming Beach

Auditor's Plat # 3 Little Wolf Look-Out

Main assessment table with columns: IN WHOSE NAME ASSESSED, DESCRIPTION OF PROPERTY, TRUE AND FULL VALUATIONS, ASSESSED VALUATIONS, and FINAL EQUALIZED VALUE.

Cass County, Minnesota, for Taxes for the Year 1962.

NA

Tax table with columns: SOLD FOR TAXES, VALUATIONS BY SCHOOL DISTRICTS AS EQUALIZED BY DEPARTMENT OF TAXATION, Tax Including State Homestead, State Tax on Non-Homestead, SPECIAL TAXES, TOTAL TAXES, PAID, WHEN PAID, Number of Receipt, March Settlement 1963, June Settlement 1963, Penalty, November Settlement 1963, Penalty, Collections to First Monday in January 1964, Delinquent on First Monday in January 1964, Total Delinquent Tax and Penalty, REMARKS.

Harding Inn Subdivision

2-20-21



Assessment Roll and Tax List of Real Property in the Town of Lake Park, Minnesota

Form 5C - MILLER-DAVIS CO., MINNEAPOLIS

\* Indicate Type of Property: R-Residential, C-Commercial, I-Industrial, U-Utility, F-Farm, L-Lakeshore, T-Timber, M-Mineral

Table with columns: IN WHOSE NAME ASSESSED, DESCRIPTION OF PROPERTY, TRUE AND FULL VALUATIONS, ASSESSED VALUATIONS, and FINAL EQUALIZED VALUE.

Vertical text on the left margin: Ah Hung Highland Inn, Hardig Johani Addition, Supplemental Bug P-Zo-Wg-Mi, Auditor's Plat # 3, Little Wolf Look-Out

Cass County, Minnesota, for Taxes for the Year 1962.

Table with columns: VALUATIONS BY SCHOOL DISTRICTS AS EQUALIZED BY DEPARTMENT OF TAXATION, TAXES, PAID, WHEN PAID, Number of Receipt, March Settlement 1963, June Settlement 1963, Penalty, November Settlement 1963, Penalty, Collections to First Monday in January 1964, Penalty, Delinquent on First Monday in January 1964, Total Delinquent Tax and Penalty, REMARKS.

Handwritten notes at the bottom of the tax table: Grand Total, H 12782, H 23578, 36360, 22476, 17319, 39815, 35278, 40899, 76175.

Vertical text on the right margin: 17208-22