

ASSESSMENT & TAX LIST

Pike Bay

1949



INDEX TO SECTIONS

SECTION	PAGE
Sec. 1.....	
" 2.....	
" 3.....	
" 4.....	
" 5.....	
" 6.....	
" 7.....	
" 8.....	
" 9.....	
" 10.....	
" 11.....	
" 12.....	
" 13.....	
" 14.....	
" 15.....	
" 16.....	
" 17.....	
" 18.....	
" 19.....	
" 20.....	
" 21.....	
" 22.....	
" 23.....	
" 24.....	
" 25.....	
" 26.....	
" 27.....	
" 28.....	
" 29.....	
" 30.....	
" 31.....	
" 32.....	
" 33.....	
" 34.....	
" 35.....	
" 36.....	

For Convenience of Auditor in Showing Boundaries of School Districts

Township No. 145 Range No. 31 Mer. P. M.



Returns Showing Grain Received in or Handled by Elevators, Warehouses and Mills in the \_\_\_\_\_ of \_\_\_\_\_ in the County of \_\_\_\_\_ for the Year Ending May 1, 1949.

NAMES OF OWNERS	ADDRESS	Bushels of Wheat	Bushels of Soy Beans	Bushels of Flax	Total No. of Bushels of Wheat, Soy Beans and Flax	★ Tax of 1/4 Mill per Bushel		Bushels of Corn	Bushels of Barley	Bushels of Rye	Bushels of Oats	Bushels of Buckwheat	Bushels of all Other Grains	Total No. Bushels of Corn, Barley, Rye, Oats, Buckwheat and all Other Grains	★ Tax of 1/4 Mill Per Bushel		★ Total Tax		REMARKS		
						Dollars	Cts.								Dollars	Cts.	Dollars	Cts.			

Note ★ Assessors will not fill these Columns



Assessment of T

Form 117 MILLER-GAYTS COMPANY, MINNEAPOLIS

NAME OF OWNER

Treasurer's Office, Cass County, Minnesota

RECEIVED this, the first Monday (being the 2nd day) of January, A. D. 1950, of L. C. Peterson, Auditor of said County, Minnesota, the Tax List of all Taxable Real and Personal Property in the Town of Pike Bay in said County for the year A. D. 1949, as specified above and amounting to Dollars

Paul D. Jewell, by J. M. P. County Treasurer.

Office of County Treasurer, Cass County, Minnesota

To L. C. Peterson, County Auditor:

Sir:—I herewith return to you the Tax List for the Town of Pike Bay in said County for the year 1949, heretofore received from you. I certify that I have compared the same with the duplicate receipts in your office, and have written opposite the amount of each tax so receipted the words "First Quarter Paid", "Second Quarter Paid", "Third Quarter Paid" or "Paid in full" as the case may be, and the number of my receipt given in discharge of said tax, and each tract or lot of real property against which the taxes remain unpaid is delinquent for said year.

Yours respectfully, Paul D. Jewell, by J. M. P. County Treasurer.

Auditor's Office, Cass County, Minnesota

I, Auditor of said County, and State of Minnesota, do hereby certify that the following is a correct list of the Taxes levied on the Real and Personal Property in the of for the year 1949.

WITNESS my hand and official seal, the day of 1950.

(SEAL) County Auditor.

Auditor's Office, Cass County, Minnesota

I hereby certify that on the first Monday in January 1951, I received of County Treasurer, the Tax List of the of in said County for the year 1949; that I have compared the said list with the Statements receipted for by said Treasurer, which are on file in my office, and that each tract or lot of real property therein against which the taxes, or any part thereof, remains unpaid are delinquent for said year.

(SEAL) County Auditor.

Assessment of 1

Form 316 MINN. STATE TAX COMMISSION, MINNEAPOLIS

TABULAR SCHEDULE OF VALUATIONS,

RATES AND TAXES

LEVIED IN THE

Twp. Pike Bay

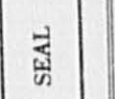
COUNTY OF CASS, STATE OF MINNESOTA

NAME OF OWNER

Table with columns for Valuation by School Districts (Agricultural, Non-Agricultural, Personal), Rate of State Taxes, Rate of County Taxes, Rate of Town Taxes, Rate of School Taxes, and Rate of All Other Taxes. Includes handwritten values and calculations.

Table with columns for School Taxes (Total Rate of Sch'l Tax, Total Rate of all Taxes) and Taxes Levied (Local 1 Mill, Special, State Loan, Def., Jan'y., C.O., B.&I., Total School Taxes, All Other Taxes). Includes handwritten calculations and totals.

Auditor of said County and State of Minnesota, do hereby certify that the foregoing is a true and correct Schedule, showing the valuation of all the taxable property, in the several Tax Funds levied therefor for the year A. D. 1934... By L. C. Peterson, Auditor.



Total Taxes Real Estate 7796.22
Pers. Prop. 4628.47
Total 12424.64

Assessment of 1

Form 315 WILCO-DAVIS COMPANY, MINNEAPOLIS

NAME OF OWNER

FUNDS	MARCH SETTLEMENT 19.....	JUNE SETTLEMENT 19..41	NOV. SETTLEMENT 19..50	Amount Collected from Nov. 1940 to First Monday in Jan. 1941	REDUCTIONS	Total Reductions and Collected	BALANCE UNCOLLECTED	ADDITIONS	Total Uncollected to First Monday in January, 19.....
State--Non-Homestead,	6891	4643	3734	258					
State--Homestead,	6227	7724	5566	383					
County Revenue,	40451	50177	36160	2489					
County Road and Bridge,	13485	16726	12053	830					
County Welfare,	75606	93777	67580	4652					
County Bond and Interest,	26970	33452	24107	1660					
Town Revenue,	8939	11088	7990	550					
Town Road and Bridge,	6515	8081	5823	401					
Town Drag,	1515	1879	1354	73					
Town State Loan, FIRE	1970	2443	1760	121					
School Local 1 Mill,	1515	1878	1354	93					
School Special,	45458	39288	31023	2028					
School State Loan,	5422	10473	9000	654					
Deficiency	63525	77668	55535	3714					
Tuition									
Transportation	3788	4678	3386	233					
C.O.	9729	8320	4543	278					
B.r.d.	14290	17224	14435	1007					
	332286	391532	285403	19544					

	SCHOOL DISTRICT NO.	LOCAL 1 MILL	SPECIAL	STATE LOAN	DEFICIENCY	B+J	TRANSP.	C.O.	TOTALS
MARCH SETTLEMENT	School District No. 7A #3 - 7A - W.	542 973	16270 29188	5422	21689 41836	6507 7783	1256 2432	9729	51786 91941
	Totals	1515	45458	5422	63525	14290	3788	9729	143727
JUNE SETTLEMENT	School District No. 4 #3 Na #3 A - W Na - W	758 287 381 450	11372 8675 5728 13506	7581 2872	30324 11567 16477 19358	9077 3470 3055 3602	1875 723 755 1125	3818 4502	61027 27616 30356 42543
	Totals	1878	39281	10473	77668	19224	4678	8320	161542
NOVEMBER SETTLEMENT	School District No. 3 - W. 3 - W. W - W W - W	436 464 204 250	6544 13918 3065 7499	4361 4639	17443 18557 8787 10748	5232 5567 1635 2000	1090 1160 511 625	2043 2500	35104 44305 16245 23622
	Totals	1354	21023	9000	55535	14435	3386	4543	119276
NOVEMBER to JANUARY	School District No. 3a 3 - Na W - A W - W	24 41 27 01	364 1233 406 25	243 411	972 1644 1161 37	271 473 216 07	61 103 67 02	270 08	1953 3725 2147 80
	Totals	73	2028	654	3814	1007	233	278	8107
ADDITIONS	School District No.								
	Totals								
REDUCTIONS	School District No.								
	Totals								

At-Mung Point

Harding-Jordahl Adm.

Supplemental plat of Bug-E-Zo-Me-King Beach

Increase or Decrease in Value of Property because of Erection or Destruction of Buildings or Structures  
in township or village of Pike Bay

Names of Owners	Description	Sec. or Lot	Twp. or Blk.	Range	True & Full Value of Buildings	Kind of Building	Assessed Value of Buildings	Assessed Value of Buildings no longer on prop.
Cecily Naomi Richards	barn 16'x60'x8'	29	145	31	400.	Frame		
Deerue barn on Sec. 20.								
Geo. D. Foster	12'x24'x5'	34			30.00	wood & blocks		
Carl D. Foster	milks pump house 12'x16'x8'	32			75.00	Frame		
Dora Wintermeyer	24'x28'x7'	30			200.00	Cement base		
	12'x26'x8'				80.00	Frame		
Charles Millard	garage 12'x32'x6'	28			25.	"		
Peter Duncan	28'x30'x12'	29			burnt down	"		
Donald Bohn	80'x16'x5'	16			\$325	"		
Jarvis & Gamode	24'x32'x7 1/2'	5			\$400	Cement blocks		
Lewis Irons	12'x16'x8'	11	145	31	250.	Frame basement		
J. A. Fuller	20'x24'x8'				\$400.	Cement blocks		
B. A. Black	8'x16'x6'	27			150	Frame porch		

C. D. Foster 5-16-49

Cass County, Minnesota, for Taxes for the Year 1949.

SOLD FOR TAXES	VALUATIONS BY SCHOOL DISTRICTS AS EQUALIZED BY DEPARTMENT OF TAXATION						Tax including State Homestead	State Tax on Non-Homestead	SPECIAL TAXES	TOTAL TAXES	PAID	WHEN PAID	Number of Receipt	March Settlement 1950	June Settlement 1950	Penalty	November Settlement 1950	Penalty	Collections to First Monday in January 1951	Penalty	Delinquent on First Monday in January 1951	Total Delinquent Tax and Penalty	REMARKS
	District No.	District No.	District No.	District No.	District No.	District No.																	
	Rate	Rate	Rate	Rate	Rate	Rate																	
	Dollars	Dollars	Dollars	Dollars	Dollars	Dollars	\$ cts.	\$ cts.	\$ cts.	\$ cts.	Month Day Year		\$ cts.	\$ cts.	\$ cts.	\$ cts.	\$ cts.	\$ cts.	\$ cts.	\$ cts.	\$ cts.		
1																							
2																							
3																							
4																							
5																							
6																							
7																							
8																							
9																							
10																							
11																							
12																							
13																							
14																							
15																							
16																							
17																							
18																							
19																							
20																							

Lot 1 Sec 5-145-31  
Frank Morgan  
not homestead for  
1949  
Pike Bay ✓



Assessment Roll and Tax List of Real Property in the Town of *Pike Bay*,

Form SCD MILLER-DAY COMPANY, MINNEAPOLIS

IN WHOSE NAME ASSESSED	TO WHOM TRANSFERRED	DESCRIPTION OF PROPERTY				No. School District	Indicate Homestead Yes or No	Indicate Agricultural Yes or No	TRUE AND FULL VALUATIONS				ASSESSED VALUATIONS						FINAL EQUALIZED VALUE		
		SUBDIVISION	Sec. or Lot	Town or Block	Rng.				Number of Acres of Land	LAND Exclusive of Structures and Improvements	BUILDINGS and Other Structures	MACHINERY Permanently Attached to Real Estate	TOTAL True and Full Value	RURAL		ALL OTHER		MACHINERY Permanently Attached to Real Estate		TOTAL ASSESSED VALUE	Total Assessed Value as Equalized by the Board of Review
														Acres	100ths	Homestead Up to \$4,000 20%	Over \$4,000 and Non-Homestead 33 1/3%				
		1	NE 1/4 of NE 1/4																		
		2	NW 1/4 of NE 1/4																		
		3	SW 1/4 of NE 1/4																		
		4	SE 1/4 of NE 1/4																		
		5																			
		6	NE 1/4 of NW 1/4																		
		7	NW 1/4 of NW 1/4																		
		8	SW 1/4 of NW 1/4																		
		9	SE 1/4 of NW 1/4																		
		10																			
		11	NE 1/4 of SW 1/4																		
		12	NW 1/4 of SW 1/4																		
		13	SW 1/4 of SW 1/4																		
		14	SE 1/4 of SW 1/4																		
		15																			
		16	NE 1/4 of SE 1/4																		
		17	NW 1/4 of SE 1/4																		
		18	SW 1/4 of SE 1/4																		
		19	SE 1/4 of SE 1/4																		
		20																			

14521

Cass County, Minnesota, for Taxes for the Year 1949.

SOLD FOR TAXES	VALUATIONS BY SCHOOL DISTRICTS AS EQUALIZED BY DEPARTMENT OF TAXATION						Tax including State Homestead	State Tax on Non-Homestead	SPECIAL TAXES	TOTAL TAXES	PAID	WHEN PAID	Number of Receipt	March Settlement 1950	June Settlement 1950	Penalty	November Settlement 1950	Penalty	Collections to First Monday in January 1951	Penalty	Delinquent on First Monday in January 1951	Total Delinquent Tax and Penalty	REMARKS
	District No.	District No.	District No.	District No.	District No.	District No.																	
	Rate	Rate	Rate	Rate	Rate	Rate																	
1																							
2																							
3																							
4																							
5																							
6																							
7																							
8																							
9																							
10																							
11																							
12																							
13																							
14																							
15																							
16																							
17																							
18																							
19																							
20																							

Ab-Hing Point

Harding-Jordanl Adm.

Supplemental list of Pike-Bay-Go-We-Ming Beach









Assessment Roll and Tax List of Real Property in the Pike Bay of

IN WHOSE NAME ASSESSED	TO WHOM TRANSFERRED	DESCRIPTION OF PROPERTY				No. School District	Indicate Homestead Yes or No	Indicate Agricultural Yes or No	TRUE AND FULL VALUATIONS					ASSESSED VALUATIONS					FINAL EQUALIZED VALUE	SOLD FOR TAXES	VALUATIONS BY SCHOOL DISTRICTS AS EQUALIZED BY DEPARTMENT OF TAXATION						Tax including State Homestead Mills	State Tax on Non-Homestead Mills	SPECIAL TAXES	TOTAL TAXES	PAID	WHEN PAID	Number of Receipt	March Settlement 1950	June Settlement 1950	Penalty	November Settlement 1950	Penalty	Collections to First Monday in January 1951	Penalty	Delinquent on First Monday in January 1951	Total Delinquent Tax and Penalty	REMARKS										
		SUBDIVISION	Sec. or Lot	Town or Block	Rng.				Number of Acres of Land	LAND Exclusive of Structures and Improvements	BUILDINGS and Other Structures	MACHINERY Permanently Attached to Real Estate	TOTAL True and Full Value	RURAL Homestead Up to \$4,000 20%	Over \$4,000 and Non-Homestead 33 1/4%	ALL OTHER Homestead Up to \$4,000 25%	Over \$4,000 and Non-Homestead 40%	MACHINERY Permanently Attached to Real Estate 33 1/4%			TOTAL ASSESSED VALUE	District No.	District No.	District No.	District No.	District No.																		District No.	Rate	Rate	Rate	Rate	Rate	Rate	Month	Day	Year
Delmer Hanson																																																					
Louis Norenberg																																																					
Harry L. Hanson																																																					
J.W. Christensen																																																					
Ahbert J. Christensen																																																					
Clarence B. Schmidt																																																					
Henry J., Clarence B., Roland W. + Henry H. Schmidt																																																					
Martin Anderson																																																					
M. N. Minzghor																																																					
Lettie Anderson																																																					
N. A. Schluter																																																					
Matthew N. Minzghor																																																					

Ah-Ning Point  
 Harding-Jondahl Adm.  
 Supplemental plat of Big-S-20-The-Ning Beach



FORM 500 - MILLER-DAVIS COMPANY, MINNEAPOLIS

IN WHOSE NAME ASSESSED	TO WHOM TRANSFERRED	DESCRIPTION OF PROPERTY				TRUE AND FULL VALUATIONS					ASSESSED VALUATIONS					FINAL EQUALIZED VALUE		
		SUBDIVISION	Sec. of Lot	Town or Block	Rng.	Number of Acres of Land	LAND Exclusive of Structures and Improvements	BUILDINGS and Other Structures	MACHINERY Permanently Attached to Real Estate	TOTAL True and Full Value	RURAL		ALL OTHER		MACHINERY Permanently Attached to Real Estate		TOTAL ASSESSED VALUE	Total Assessed Value as Equalized by the Board of Review
											Acres	100ths	Homestead Up to \$4,000 20%	Over \$4,000 and Non-Homestead 33 1/3%				
Cyrus A. & Thirza M. Braman		NE 1/4 of NE 1/4	8	14531	40													
"		NW 1/4 of NE 1/4			40													
Howard & Edna Braman		SW 1/4 of NE 1/4			40													
Leonard Noell & Dorothy Noell Roy St. 1		SE 1/4 of NE 1/4			40													
R. Hansley		N 1/2 of N 1/2 of SE 1/4			40													
Clifford D. Routley		NE 1/4 of NW 1/4			40													
Viola Routley		W 1/2 of NW 1/4			20													
Gladys Dale		SW 1/4 of NW 1/4			40													
Howard & Edna Braman		SE 1/4 of NW 1/4			40													
Lorraine R. Larson <sup>176 Calumet San Francisco</sup>		E 1/2 of NW 1/4 of NW 1/4			20													
Marie Hanson		NE 1/4 of SW 1/4			40													
Gordon D. Richmond		NW 1/4 of SW 1/4			40													
Henry J. Roland, & Harry N. Schmidt		SW 1/4 of SW 1/4			40													
Harry & Marie A. Hanson		SE 1/4 of SW 1/4 less Ry.			39 71													
Andrew J. Shively		4 acs. of S 1/2 of SE 1/4 - S. of Ry.			4													
Mercy Adkins		NE 1/4 of SE 1/4			98 76													
		NW 1/4 of SE 1/4																
		SW 1/4 of SE 1/4																
		SE 1/4 of SE 1/4																
Lena, E. Leida, Rudolf, Alfred, Clarence, & Robert Hansley & Florence Lovelace & Della Thomas		S. 10 acs. of N. 50 acs. of SE 1/4			10 00													
					632 47													

SOLD FOR TAXES	VALUATIONS BY SCHOOL DISTRICTS AS EQUALIZED BY DEPARTMENT OF TAXATION						Tax including State Homestead	State Tax on Non-Homestead	SPECIAL TAXES	TOTAL TAXES	PAID	WHEN PAID	Number of Receipt	March Settlement 1950	June Settlement 1950	Penalty	November Settlement 1950	Penalty	Collections to First Monday in January 1951	Penalty	Delinquent on First Monday in January 1951	Total Delinquent Tax and Penalty	REMARKS
	District No.	Rate	District No.	Rate	District No.	Rate																	
	Dollars	Dollars	Dollars	Dollars	Dollars	Dollars																	
	H 119					2372			2372	1	PAID IN FULL AUG 2 1950	11913											
	H 54					1076			1076	2	PAID IN FULL AUG 2 1950												
SOLD FOR TAXES	72					1436	32		1468	3	PAID IN FULL JULY 29 1950	11737											
	67					1336	30		1366	4	PAID IN FULL SEP 2 0 1950	12246											
	H 97					1934			1934	5	PAID IN FULL MAY 3 1 1950	8247		1934									
	H 74					1476			1476	6	PAID IN FULL OCT 3 1 1950	13723											
	H 29					578			578	7	PAID IN FULL MAY 3 1 1950	9997		578									
	H 91					1814			1814	8	PAID IN FULL OCT 3 1 1950	13722		734									
SOLD FOR TAXES	90					1794	42		1836	9													
	H 32					638			638	10	PAID IN FULL SEP 2 0 1950	12237											
	75					1496	34		1530	11													
	100					1994	46		2040	12	PAID IN FULL MAY 2 5 1950	7687		2040									
	75					1496	34		1530	13	2nd Half Paid MAY 3 1 1950	9853		765									
	97					1934	44		1978	14	PAID IN FULL APR 6 1950	4596		1978									
	H 58					1156			1156	15	PAID IN FULL MAY 3 1 1950	5210		1156									
	H 163					3250			3250	16	PAID IN FULL APR 2 5 1950	5029		3250									
										17													
										18													
										19													
										20	PAID IN FULL MAY 3 1 1950	8247		510									
	25					498	12		510														
	717					26278	274		26552					13145									
	601																						
	1318																						

1468  
 1266 ✓ 27  
 1366 ✓ 41 Ref. Warr. #92952 - 8/1/50 - 13.93 descrip.  
 Pd. on wrong

Penalty due \$ 38

At-Home Point

Harding-Jondahl Adm.

Supplemental part of Bug-E-Zo-The-Bing Beach



FORM 500 - MILLS-DAVIS COMPANY, MINNEAPOLIS

IN WHOSE NAME ASSESSED	TO WHOM TRANSFERRED	DESCRIPTION OF PROPERTY			TRUE AND FULL VALUATIONS					ASSESSED VALUATIONS					FINAL EQUALIZED VALUE
		Subdivision	Sec. or Lot	Town or Block	Rng.	Number of Acres of Land	LAND Exclusive of Structures and Improvements	BUILDINGS and Other Structures	MACHINERY Permanently Attached to Real Estate	TOTAL True and Full Value	RURAL	ALL OTHER	MACHINERY Permanently Attached to Real Estate	TOTAL ASSESSED VALUE	
Mark L. Burns	Kenneth Burns	NE 1/4 of NE 1/4				9.145			31.40				3		
Frank Gehlke		NW 1/4 of NE 1/4							40						
Mark L. Burns	Kenneth Burns	SE 1/4 of NE 1/4							40						
"	"	NE 1/4 of NW 1/4							61						
L. C. Sarah	Kerkpatrick	NW 1/4 of NW 1/4							40						
Clifford R. & Grace C. Swenson		NE 1/4 of SW 1/4							20						
Mark L. Burns	Kenneth Burns	NW 1/4 of SW 1/4							40						
Lloyd L. & Dagmar Baird		SW 1/4 of SW 1/4							40						
Leonard Howell & Dorothy Howell	Roy Stai	SE 1/4 of SW 1/4							40						
Hollace D. & Anne L. Wischert		SE 1/4 of NE 1/4 of SE 1/4 less S. 51'							7						
Village of Cass Lake		NE 1/4 of SE 1/4							10						
									350						

SOLD FOR TAXES	VALUATIONS BY SCHOOL DISTRICTS AS EQUALIZED BY DEPARTMENT OF TAXATION						Tax including State Homestead	State Tax on Non-Homestead	SPECIAL TAXES	TOTAL TAXES	PAID	WHEN PAID	Number of Receipt	March Settlement 1950	June Settlement 1950	Penalty	November Settlement 1950	Penalty	Collections to First Monday in January 1951	Penalty	Delinquent on First Monday in January 1951	Total Delinquent Tax and Penalty	REMARKS
	District No.	District No.	District No.	District No.	District No.	District No.																	
						75	15.04	34	15.38	1	PAID IN FULL	MAY 10 1950	7267		15.38								
						367	73.56	168	75.24	2	2nd Half Paid	OCT 2 1950	12937		34.62		37.62						
										3													
						67	13.42	30	13.72	4	PAID IN FULL	MAR 2 1950	3259		13.72								
						120	24.04	54	24.58	5	PAID IN FULL	MAR 2 1950	3265		24.58								
										6													
										7													
						75	15.04	34	15.38	8	2nd Half Paid	OCT 3 1950	13710		7.69		7.69						
										9													
										10													
						100	20.04	46	20.50	11	PAID IN FULL	MAY 3 1950	5107		20.50								
						80	16.04	36	16.40	12	PAID IN FULL	MAY 3 1950	8171		16.40								
						74.80	16.04		16.04	13	PAID IN FULL	MAR 2 1950	3264		16.04								
										14													
						1138	27.66		27.66	15	PAID IN FULL	MAY 3 1950	9780		27.66								
										16													
										17													
										18													
										19													
										20													
							220.88	402	224.90						172.59		45.31						

Ab-King Point

Harding-Jordan Adm.

Supplemental Plat of Big-E-Zo-Wa-Ring Beach



Assessment Roll and Tax List of Real Property in the \_\_\_\_\_ of \_\_\_\_\_,

Form SCD - MILLER-SAYRE COMPANY, MINNEAPOLIS

IN WHOSE NAME ASSESSED	TO WHOM TRANSFERRED	DESCRIPTION OF PROPERTY				No. School District	Indicate Homestead Yes or No	Indicate Agricultural Yes or No	TRUE AND FULL VALUATIONS				ASSESSED VALUATIONS						FINAL EQUALIZED VALUE		
		SURDIVISION	Sec. or Lot	Town or Block	Rng.				Number of Acres of Land	LAND Exclusive of Structures and Improvements	BUILDINGS and Other Structures	MACHINERY Permanently Attached to Real Estate	TOTAL True and Full Value	RURAL		ALL OTHER		MACHINERY Permanently Attached to Real Estate		TOTAL ASSESSED VALUE	Total Assessed Value as Equalized by the Board of Review
														Acres	100ths	Homestead Up to \$4,000 20%	Over \$4,000 and Non-Homestead 33 1/3%				
								Dollars	Dollars	Dollars	Dollars	Dollars	Dollars	Dollars	Dollars	Dollars	Dollars				
		NE 1/4 of NE 1/4																			
		NW 1/4 of NE 1/4																			
		SW 1/4 of NE 1/4																			
		SE 1/4 of NE 1/4																			
		NE 1/4 of NW 1/4																			
		NW 1/4 of NW 1/4																			
		SW 1/4 of NW 1/4																			
		SE 1/4 of NW 1/4																			
		NE 1/4 of SW 1/4																			
		NW 1/4 of SW 1/4																			
		SW 1/4 of SW 1/4																			
		SE 1/4 of SW 1/4																			
		NE 1/4 of SE 1/4																			
		NW 1/4 of SE 1/4																			
		SW 1/4 of SE 1/4																			
		SE 1/4 of SE 1/4																			

Cass County, Minnesota, for Taxes for the Year 1949.

SOLD FOR TAXES	VALUATIONS BY SCHOOL DISTRICTS AS EQUALIZED BY DEPARTMENT OF TAXATION						Tax including State Homestead	State Tax on Non-Homestead	SPECIAL TAXES	TOTAL TAXES	PAID	WHEN PAID	Number of Receipt	March Settlement 1950	June Settlement 1950	Penalty	November Settlement 1950	Penalty	Collections to First Monday in January 1951	Penalty	Delinquent on First Monday in January 1951	Total Delinquent Tax and Penalty	REMARKS
	District No.	District No.	District No.	District No.	District No.	District No.																	
	Rate	Rate	Rate	Rate	Rate	Rate																	

Supplemental plat of Blg.-E-Zo-me-Ning Beach



Assessment Roll and Tax List of Real Property in the \_\_\_\_\_ of \_\_\_\_\_, \_\_\_\_\_

FOOTING: SCD - MILLER-BAYNE COMPANY, MINNEAPOLIS

IN WHOSE NAME ASSESSED	TO WHOM TRANSFERRED	DESCRIPTION OF PROPERTY				TRUE AND FULL VALUATIONS				ASSESSED VALUATIONS						FINAL EQUALIZED VALUE							
		SUBDIVISION	Sec. or Lot	Town or Block	Rng.	Number of Acres of Land	LAND Exclusive of Structures and Improvements	BUILDINGS and Other Structures	MACHINERY Permanently Attached to Real Estate	TOTAL True and Full Value	RURAL		ALL OTHER		MACHINERY Permanently Attached to Real Estate		TOTAL ASSESSED VALUE	Total Assessed Value as Equalized by the Board of Review					
											Acres	100ths	No. School District	Indicate Homestead Yes or No					Indicate Agricultural Yes or No	Homestead	Over \$4,000 and Non-Homestead	Homestead	Over \$4,000 and Non-Homestead
																				20%	33 1/3%	25%	40%
Dollars	Dollars	Dollars	Dollars	Dollars	Dollars	Dollars	Dollars	Dollars	Dollars	Dollars	Dollars	Dollars											
		1																					
		2																					
		3																					
		4																					
		5																					
		6																					
		7																					
		8																					
		9																					
		10																					
		11																					
		12																					
		13																					
		14																					
		15																					
		16																					
		17																					
		18																					
		19																					
		20																					

SOLD FOR TAXES	VALUATIONS BY SCHOOL DISTRICTS AS EQUALIZED BY DEPARTMENT OF TAXATION						Tax including State Homestead	State Tax on Non-Homestead	SPECIAL TAXES	TOTAL TAXES	PAID	WHEN PAID	Number of Receipt	March Settlement 1950	June Settlement 1950	Penalty	November Settlement 1950	Penalty	Collections to First Monday in January 1951	Penalty	Delinquent on First Monday in January 1951	Total Delinquent Tax and Penalty	REMARKS
	District No.	District No.	District No.	District No.	District No.	District No.																	
	Rate	Rate	Rate	Rate	Rate	Rate																	
	Mills	Mills	Mills	Mills	Mills	Mills																	
Dollars	Dollars	Dollars	Dollars	Dollars	Dollars	\$ cts.	\$ cts.	\$ cts.	\$ cts.		Month Day Year		\$ cts.	\$ cts.	\$ cts.	\$ cts.	\$ cts.	\$ cts.	\$ cts.	\$ cts.	\$ cts.		

Ab-Nung Point

Harding-Jordahl Add.

Supplemental plat of Bug-E-Zo-Me-Hing Beach

Assessment Roll and Tax List of Real Property in the \_\_\_\_\_ of Pike Bay

FORM 500 - WILSON-DAVIS COMPANY, MINNEAPOLIS

IN WHOSE NAME ASSESSED	TO WHOM TRANSFERRED	DESCRIPTION OF PROPERTY				TRUE AND FULL VALUATIONS				ASSESSED VALUATIONS					FINAL EQUALIZED VALUE		
		SUBDIVISION	Sec. or Lot	Town or Block	Rng. Acres of Land	LAND Exclusive of Structures and Improvements	BUILDINGS and Other Structures	MACHINERY Permanently Attached to Real Estate	TOTAL True and Full Value	RURAL		ALL OTHER		MACHINERY Permanently Attached to Real Estate 33 1/3%		TOTAL ASSESSED VALUE	Total Assessed Value as Equalized by the Board of Review
										Homestead Up to \$4,000	Over \$4,000 and Non-Homestead	Homestead Up to \$4,000	Over \$4,000 and Non-Homestead				
										20%	33 1/3%	25%	40%				
Acres	100ths	Dollars	Dollars	Dollars	Dollars	Dollars	Dollars	Dollars	Dollars	Dollars	Dollars	Dollars	Dollars	Dollars			
	<i>Fred J. Gangelhoff</i>	NE 1/4 of NE 1/4			14 145 31												
		NW 1/4 of NE 1/4			40												
		SW 1/4 of NE 1/4															
		SE 1/4 of NE 1/4															
		NE 1/4 of NW 1/4															
		NW 1/4 of NW 1/4															
		SW 1/4 of NW 1/4															
	State of Minnesota	SE 1/4 of NW 1/4															
		NE 1/4 of SW 1/4															
		NW 1/4 of SW 1/4															
		SW 1/4 of SW 1/4															
		SE 1/4 of SW 1/4															
		NE 1/4 of SE 1/4															
		NW 1/4 of SE 1/4															
		SW 1/4 of SE 1/4															
		SE 1/4 of SE 1/4															
					40												

Cass County, Minnesota, for Taxes for the Year 1949.

SOLD FOR TAXES	VALUATIONS BY SCHOOL DISTRICTS AS EQUALIZED BY DEPARTMENT OF TAXATION						Tax including State Homestead	State Tax on Non-Homestead	SPECIAL TAXES	TOTAL TAXES	PAID	WHEN PAID	Number of Receipt	March Settlement 1950	June Settlement 1950	Penalty	November Settlement 1950	Penalty	Collections to First Monday in January 1951	Penalty	Delinquent on First Monday in January 1951	Total Delinquent Tax and Penalty	REMARKS
	District No.	District No.	District No.	District No.	District No.	District No.																	
	Rate	Rate	Rate	Rate	Rate	Rate																	
	Mills	Mills	Mills	Mills	Mills	Mills																	
	Dollars	Dollars	Dollars	Dollars	Dollars	Dollars		\$ cts.	\$ cts.	\$ cts.	\$ cts.	Month Day Year	\$ cts.	\$ cts.	\$ cts.	\$ cts.	\$ cts.	\$ cts.	\$ cts.	\$ cts.	\$ cts.		
						280		60 04	1 28		61 32		2nd Half Paid AUG 2 1950 13077 1st Half Paid MAY 15 1950 7402		30 66		30 66						

Supplemental part of Blg-E-Zo-Wie-Ring Beach

Assessment Roll and Tax List of Real Property in the Town of Pike Bay,

Form 500 WILHELM-BAY COMPANY, MINNEAPOLIS

IN WHOSE NAME ASSESSED	TO WHOM TRANSFERRED	DESCRIPTION OF PROPERTY			No. School District	Indicate Homestead Tax or No	Indicate Agricultural Tax or No	TRUE AND FULL VALUATIONS		ASSESSED VALUATIONS						FINAL EQUALIZED VALUE				
		SUBDIVISION	Sec. or Lot	Town or Block				Number of Acres of Land	LAND Exclusive of Structures and Improvements	BUILDINGS and Other Structures	MACHINERY Permanently Attached to Real Estate	TOTAL True and Full Value	RURAL		ALL OTHER		MACHINERY Permanently Attached to Real Estate	TOTAL ASSESSED VALUE	Total Assessed Value as Equalized by the Board of Review	
													Acres	100ths	Homestead Up to \$4,000 20%					Over \$4,000 and Non-Homestead 33 1/3%
		NE 1/4 of NE 1/4																		
		NW 1/4 of NE 1/4																		
		SW 1/4 of NE 1/4																		
		SE 1/4 of NE 1/4																		
		NE 1/4 of NW 1/4																		
		NW 1/4 of NW 1/4																		
		SW 1/4 of NW 1/4																		
		SE 1/4 of NW 1/4																		
		NE 1/4 of SW 1/4																		
		NW 1/4 of SW 1/4																		
		SW 1/4 of SW 1/4																		
		SE 1/4 of SW 1/4																		
		NE 1/4 of SE 1/4																		
		NW 1/4 of SE 1/4																		
		SW 1/4 of SE 1/4																		
		SE 1/4 of SE 1/4																		

*Village of Cass Lake*

*Exempt*

15 145 31

3

Cass County, Minnesota, for Taxes for the Year 1949.

SOLD FOR TAXES	VALUATIONS BY SCHOOL DISTRICTS AS EQUALIZED BY DEPARTMENT OF TAXATION						Tax including State Homestead .....Mills	State Tax on Non-Homestead .....Mills	SPECIAL TAXES	TOTAL TAXES	PAID	WHEN PAID Month Day Year	Number of Receipt	March Settlement 1950 \$ cts.	June Settlement 1950 \$ cts.	Penalty \$ cts.	November Settlement 1950 \$ cts.	Penalty \$ cts.	Collections to First Monday in January 1951 \$ cts.	Penalty \$ cts.	Delinquent on First Monday in January 1951 \$ cts.	Total Delinquent Tax and Penalty \$ cts.	REMARKS	
	District No.	District No.	District No.	District No.	District No.	District No.																		
	Rate	Rate	Rate	Rate	Rate	Rate																		
1																								
2																								
3																								
4																								
5																								
6																								
7																								
8																								
9																								
10																								
11																								
12																								
13																								
14																								
15																								
16																								
17																								
18																								
19																								
20																								

Appling Point  
Harding-Jordahl Adm.  
Supplemental plat of Bug-E-Go-Me-Ming Beach

Assessment Roll and Tax List of Real Property in the Town of Pike Bay,

Form 501 MILLER-DAVIS COMPANY, MINNEAPOLIS

Table with columns: IN WHOSE NAME ASSESSED, TO WHOM TRANSFERRED, DESCRIPTION OF PROPERTY, TRUE AND FULL VALUATIONS, ASSESSED VALUATIONS, and FINAL EQUALIZED VALUE. Rows include property owners like U.S. of America, Mary & Marcus Zuffteland, Lloyd & Dagmar L. Baird, and Donald H. & Isabella L. Bohn.

Continued on next Page

Table with columns: VALUATIONS BY SCHOOL DISTRICTS AS EQUALIZED BY DEPARTMENT OF REVENUE, Tax including State Homestead, State Tax on Non-Homestead, SPECIAL TAXES, TOTAL TAXES, PAID, WHEN PAID, Number of Receipt, March Settlement 1950, June Settlement 1950, November Settlement 1950, Collections to First Monday in January 1951, Delinquent on First Monday in January 1951, Total Delinquent Tax and Penalty, REMARKS. Includes handwritten notes like '2nd Half Paid OCT 31 1950' and 'PAID IN FULL'.

Supplemental Plat of

Harding-Jordahl Addn.

Supplemental Plat of

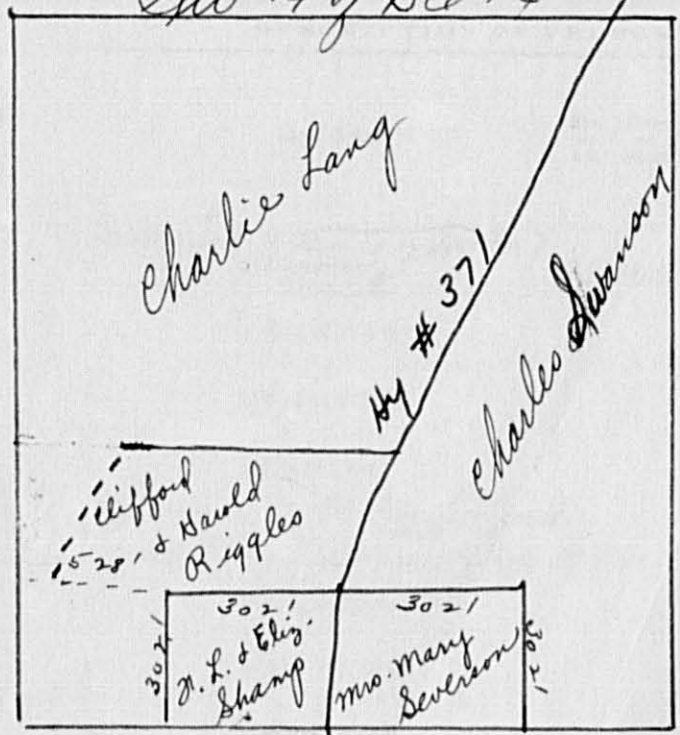
Big E-Zo-Ne-Hing Beach



Property in the town of Pike Bay,

Form 5CD MILLS-DAY COMPANY, MINNEAPOLIS

IN WHOSE NAME ASSESSED TO WHOM TRANSFERR



A. J. Atner

Mrs. Mary Swanson

J.L. & Elizabeth Shamp

Charles Swanson

Clifford Riggle & Clara Riggle  
Clifford & Harold Riggles  
Clifford Riggle & Elizabeth Riggle

Number of Acres of Land	Acres	No. School District	Indicate Homestead Yes or No	Indicate Agricultural Yes or No	TRUE AND FULL VALUATIONS				ASSESSED VALUATIONS						FINAL EQUALIZED VALUE	
					LAND Exclusive of Structures and Improvements	BUILDINGS and Other Structures	MACHINERY Permanently Attached to Real Estate	TOTAL True and Full Value	RURAL		ALL OTHER		MACHINERY Permanently Attached to Real Estate	TOTAL ASSESSED VALUE		Total Assessed Value as Equalized by the Board of Review
									Homestead Up to \$4,000	Over \$4,000 and Non-Homestead	Homestead Up to \$4,000	Over \$4,000 and Non-Homestead				
4		3			Dollars	Dollars	Dollars	Dollars	Dollars	Dollars	Dollars	Dollars	Dollars	Dollars	Dollars	
2																
2																
6.80																
2																
18.80																

SOLD FOR TAXES	VALUATIONS BY SCHOOL DISTRICTS AS EQUALIZED BY DEPARTMENT OF TAXATION						Tax including State Homestead	State Tax on Non-Homestead	SPECIAL TAXES	TOTAL TAXES	PAID	WHEN PAID	Number of Receipt	March Settlement 1950	June Settlement 1950	Penalty	November Settlement 1950	Penalty	Collections to First Monday in January 1951	Penalty	Delinquent on First Monday in January 1951	Total Delinquent Tax and Penalty	REMARKS
	District No.	District No.	District No.	District No.	District No.	District No.																	
	Rate	Rate	Rate	Rate	Rate	Rate																	
1							160	04		164													
2																							
3																							
4																							
5							200	04		204		PAID IN FULL MAY 5 1950 5548			204								
6																							
7																							
8																							
9																							
10							200	04		204		PAID IN FULL MAY 23 1950 6494			204								
11																							
12																							
13																							
14																							
15							440	10		450		PAID IN FULL MAY 31 1950 8245			450								
16																							
17																							
18							1584			1584		PAID IN FULL MAY 31 1950 9776			1584								
19																							
20																							

Supplemental plat of Big-B-20-114-Ming Beach

Assess

Town of Pike Bay

Form 301 - MINN. SALES TAX, WIRELESS

Table with columns: IN WHOSE NAME ASSESSED, TO WHOM TRANSFERRED, DESCRIPTION OF PROPERTY, TRUE AND FULL VALUATIONS, ASSESSED VALUATIONS, FINAL EQUALIZED VALUE. Includes entries for A. J. Ittner, Mrs. Mary Severson, J. L. + Elizabeth Shamp, Charles Swanson, and Clifford Rigges.

Cass County, Minnesota, for Taxes for the Year 1949.

Table with columns: VALUATIONS BY SCHOOL DISTRICTS AS EQUIPPED BY DEPARTMENT OF TAXATION, TAX INCLUDING STATE HOMESTEAD, STATE TAX ON NON-HOMESTEAD, SPECIAL TAXES, TOTAL TAXES, PAID, WHEN PAID, Number of Receipt, March Settlement, June Settlement, November Settlement, Collections to First Monday in January, Delinquent on First Monday in January, Total Delinquent Tax and Penalty, REMARKS. Includes handwritten tax amounts and settlement dates.

Assessment Roll and Tax List of Real Property in the Town of Pike Bay,

FORM 300 MILLER-DAY COMPANY, MINNEAPOLIS

IN WHOSE NAME ASSESSED	TO WHOM TRANSFERRED	DESCRIPTION OF PROPERTY				No. School District	Indicate Homestead Yes or No	Indicate Agricultural Yes or No	TRUE AND FULL VALUATIONS				ASSESSED VALUATIONS					FINAL EQUALIZED VALUE			
		SUBDIVISION	Sec. or Lot	Town or Block	Rng.				Number of Acres of Land	LAND Exclusive of Structures and Improvements	BUILDINGS and Other Structures	MACHINERY Permanently Attached to Real Estate	TOTAL True and Full Value	RURAL		ALL OTHER			MACHINERY Permanently Attached to Real Estate	TOTAL ASSESSED VALUE	Total Assessed Value as Equalized by the Board of Review
														Acres	100ths	Homestead Up to \$4,000 20%	Over \$4,000 and Non-Homestead 33 1/3%				
Crist Millard		Lot 1 except Easterly 10 ac. + less Ry	17	145	31	32	26	3													
Ole Hendrickson		Most Easterly 10 ac. of Lot 2 less Ry				10															
"		Lot 7 less Ry				72	96														
"		Lot 8 less Ry																			
Lloyd L. & Dagmar L. Baird		E. 10 ac. of Lot 1 less Ry				10															
J. E. Lundrigan		Lot 3 less Ry				13	40														
Robert Jarvis	State of Minnesota	Lot 4 less 41.12 ac.				46															
State of Minnesota		Lot 5 less Ry																			
State of Minnesota		Lot 6 less Ry																			
Oscar & Ethelwyn Eidamare	State of Minnesota	41.12 Ac. of Lot 4				41	12														
State of Minnesota		NE 1/4 of SW 1/4																			
State of Minnesota		NW 1/4 of SW 1/4																			
Frank & Johanna Elliott	State of Minnesota	SW 1/4 of SW 1/4				40															
State of Minnesota		SE 1/4 of SW 1/4				40															
J. E. Lundrigan		Lot 2 less Ry & less most easterly 10 acres				31	20														
Frank Mockius	State of Minnesota	NE 1/4 of SE 1/4				40															
State of Minnesota		NW 1/4 of SE 1/4																			
State of Minnesota		SW 1/4 of SE 1/4																			
State of Minnesota		SE 1/4 of SE 1/4				40															
Harry & Bertha Braman																					
						360	84														
						405	59														

Cass County, Minnesota, for Taxes for the Year 1949.

SOLD FOR TAXES	VALUATIONS BY SCHOOL DISTRICTS AS EQUALIZED BY DEPARTMENT OF TAXATION						Tax including State Homestead	State Tax on Non-Homestead	SPECIAL TAXES	TOTAL TAXES	PAID	WHEN PAID	Number of Receipt	March Settlement 1950	June Settlement 1950	Penalty	November Settlement 1950	Penalty	Collections to First Monday in January 1951	Penalty	Delinquent on First Monday in January 1951	Total Delinquent Tax and Penalty	REMARKS
	District No.	District No.	District No.	District No.	District No.	District No.																	
	Rate	Rate	Rate	Rate	Rate	Rate																	
1																							
2																							
3																							
4																							
5																							
6																							
7																							
8																							
9																							
10																							
11																							
12																							
13																							
14	SOLD FOR TAXES																						
15																							
16																							
17																							
18																							
19	SOLD FOR TAXES																						
20																							

Supplemental plat of Big-B-Zo-Wo-King Beach

Assessment Roll and Tax List of Real Property in the Town of Pike Bay

FORM 500 - MILLER-BAYNE COMPANY, MINNEAPOLIS

Table with columns: IN WHOSE NAME ASSESSED, TO WHOM TRANSFERRED, DESCRIPTION OF PROPERTY (Subdivision, Acres, 100ths), TRUE AND FULL VALUATIONS (LAND, BUILDINGS, MACHINERY, TOTAL), ASSESSED VALUATIONS (RURAL, ALL OTHER, MACHINERY, TOTAL ASSESSED VALUE), FINAL EQUALIZED VALUE.

Table with columns: SOLD FOR TAXES, VALUATIONS BY SCHOOL DISTRICTS AS EQUALIZED BY DEPARTMENT OF TAXATION (District No., Rate, etc.), Tax including State Homestead, State Tax on Non-Homestead, SPECIAL TAXES, TOTAL TAXES, PAID, WHEN PAID (Month, Day, Year), Number of Receipt, March Settlement 1950, June Settlement 1950, Penalty, November Settlement 1950, Collections to First Monday in January 1951, Delinquent on First Monday in January 1951, Total Delinquent Tax and Penalty, REMARKS.



Assessment Roll and Tax List of Real Property in the Town of Pike Bay

Form 500 WILLER-DAY COMPANY, MINNEAPOLIS

Table with columns: IN WHOSE NAME ASSESSED, TO WHOM TRANSFERRED, DESCRIPTION OF PROPERTY (Subdivision, Acres, etc.), TRUE AND FULL VALUATIONS, ASSESSED VALUATIONS (Rural, All Other, Machinery, etc.), FINAL EQUALIZED VALUE.

Cass County, Minnesota, for Taxes for the Year 1949.

Table with columns: SOLD FOR TAXES, VALUATIONS BY SCHOOL DISTRICTS AS EQUALIZED BY DEPARTMENT OF TAXATION, Tax including State Homestead, State Tax on Non-Homestead (4.58 Mills), SPECIAL TAXES, TOTAL TAXES, PAID, WHEN PAID, Number of Receipt, March Settlement, June Settlement, Penalty, November Settlement, Collections to First Monday in January 1951, Delinquent on First Monday in January 1951, Total Delinquent Tax and Penalty, REMARKS.

At-Ming Point

Harding-Jondahl Adm.

Supplemental plat of Big-5-20-Wie-Ming Beach

Assessment Roll and Tax List of Real Property in the Town of Pike Bay

FORM 50D MILLER-SAYRE COMPANY, MINNEAPOLIS

Table with columns: IN WHOSE NAME ASSESSED, TO WHOM TRANSFERRED, DESCRIPTION OF PROPERTY, TRUE AND FULL VALUATIONS, ASSESSED VALUATIONS, FINAL EQUALIZED VALUE.

John W. & Dollie Montague

State of Minnesota (Cont. to Lloyd DeWitt)

George Halvorson

State of Minnesota (Cont. to Elmer Kallstrom)

Roy O. DeWitt

State of Minnesota (Cont. to Hansley & Hager)

Roy O. DeWitt

Martin Monson, Jr.

"

"

"

Cass County, Minnesota, for Taxes for the Year 1949.

Table with columns: SOLD FOR TAXES, VALUATIONS BY SCHOOL DISTRICTS AS EQUALIZED BY DEPARTMENT OF TAXATION, Tax including State Homestead, State Tax on Non-Homestead, SPECIAL TAXES, TOTAL TAXES, PAID, WHEN PAID, Number of Receipt, March Settlement 1950, June Settlement 1950, November Settlement 1950, Collections to First Monday in January 1951, Delinquent on First Monday in January 1951, Total Delinquent Tax and Penalty, REMARKS.

SOLD FOR TAXES

SOLD FOR TAXES

for cont

for cont

H 45

H 50

H 50

H 50

H 250

H 194

Ab-lung Point

Harding-Jonckahl Adm.

Supplemental part of Bug-E-Co-Me-King Beach

Assessment Roll and Tax List of Real Property in the Town of Pike Bay

Form 500 - WILSON-BAY COMPANY, MINNEAPOLIS

Table with columns: IN WHOSE NAME ASSESSED, TO WHOM TRANSFERRED, DESCRIPTION OF PROPERTY, TRUE AND FULL VALUATIONS, ASSESSED VALUATIONS, FINAL EQUALIZED VALUE. Includes handwritten entries like 'Oscar C. Sells' and '27 145 31'.

Cass County, Minnesota, for Taxes for the Year 1949.

Table with columns: VALUATIONS BY SCHOOL DISTRICTS AS EQUALIZED BY DEPARTMENT OF TAXATION, Tax including State Homestead, SPECIAL TAXES, TOTAL TAXES, PAID, WHEN PAID, Number of Receipt, March Settlement 1950, June Settlement 1950, Penalty, November Settlement 1950, Penalty, Collections to First Monday in January 1951, Penalty, Delinquent on First Monday in January 1951, Total Delinquent Tax and Penalty, REMARKS. Includes handwritten entries like '4350', '7014', and '22753'.

Ab-Nung Point, Harding-Jordahl Adm., Supplemental plat of Bug-E-Zo-The-Ning Beach



Assessment Roll and Tax List of Real Property in the Town of Pike Bay

IN WHOSE NAME ASSESSED	TO WHOM TRANSFERRED	SUBDIVISION	Sec. or Lot	Town or Block	Reg.	Number of Acres of Land Acres 100ths	No. School District	TRUE AND FULL VALUATIONS					ASSESSED VALUATIONS					FINAL EQUALIZED VALUE Dollars	
								LAND Exclusive of Structures and Improvements	BUILDINGS and Other Structures	MACHINERY Permanently Attached to Real Estate	TOTAL True and Full Value	RURAL		ALL OTHER		MACHINERY Permanently Attached to Real Estate	TOTAL ASSESSED VALUE		Total Assessed Value as Equalized by the Board of Review
												Homestead Up to \$4,000 20%	Over \$4,000 and Non- Homestead 33 1/3%	Homestead Up to \$4,000 25%	Over \$4,000 and Non- Homestead 40%				
Charles Millard Francis Marty		NE 1/4 of NE 1/4	28	145	31	40	3			250				5					
		NW 1/4 of NE 1/4				40													
		SW 1/4 of NE 1/4																	
		SE 1/4 of NE 1/4																	
Francis Marty James Brunette (Indian Land)		NE 1/4 of NW 1/4 less Ry. & Hy.				32.48													
		NW 1/4 of NW 1/4 1/2 Int.				Exempt													
		SW 1/4 of NW 1/4																	
		SE 1/4 of NW 1/4 less Ry & Hy.				32.48													
		All W. of D.N. Ry. of NE 1/4 & SW 1/4				8													
		NE 1/4 of SW 1/4 less Ry. & Hy. 8 acres W. of Ry.				24.44													
		NW 1/4 of SW 1/4				40													
		SW 1/4 of SW 1/4				40													
		SE 1/4 of SW 1/4 lying W. of D.N. Ry.				8													
		SE 1/4 of SW 1/4 lying E. of D.N. Ry.				24													
		NE 1/4 of SE 1/4																	
		NW 1/4 of SE 1/4				40													
		SW 1/4 of SE 1/4				40													
		SE 1/4 of SE 1/4				40													
						409.40													

VALUATIONS BY SCHOOL DISTRICTS AS EQUALIZED BY DEPARTMENT OF TAXATION

SOLD FOR TAXES	VALUATIONS BY SCHOOL DISTRICTS AS EQUALIZED BY DEPARTMENT OF TAXATION						Tax including State Homestead	State Tax on Non-Homestead 4.58	SPECIAL TAXES	TOTAL TAXES	PAID	WHEN PAID	Number of Receipt	March Settlement 1950	June Settlement 1950	Penalty	November Settlement 1950	Penalty	Collections to First Monday in January 1951	Penalty	Delinquent on First Monday in January 1951	Total Delinquent Tax and Penalty	REMARKS
	District No.	District No.	District No.	District No.	District No.	District No.																	
1							2024		2024		Paid in full	DR # 22725	1-9-51									2024-PR	
2						75	1504	34	1538		PAID IN FULL	APR 6 1950	4594		1538								
6						H 135	2706		2706		PAID IN FULL	APR 6 1950	4594		2706								
9						60	1202	28	1230		PAID IN FULL	MAY 1 9 1950	6372		1230								
10						H 338	6774		6774		2nd Half Paid	OCT 17 1950	12706		3387		3387						
11						H 87	1744		1744		2nd Half Paid	OCT 17 1950	12706		872		872						
12						112	2244	52	2296		1st Half Paid	MAY 31 1950	9714		1148		1148						
13						134	2686	62	2748		2nd Half Paid	OCT 2 8 1950	13228		1374		1374						
14						H 99	1984		1984		1st Half Paid	MAY 31 1950	9714		1984								
15	SOLD FOR TAXES					H 113	2264		2264		PAID IN FULL	MAY 2 8 1950	7164									2264 & 2490 1948-10.82	
17						H 45	902		902		2nd Half Paid	OCT 1 1950	1738		451		451						
18						H 48	962		962		PAID IN FULL	MAY 31 1950	7946		962								
19	SOLD FOR TAXES					75	1504	34	1538		Paid in full	DR # 22725	1-9-51									1538-PR	
20							285.00	210	287.10					156.52		72.32						58.26	





Table with multiple columns: IN WHOSE NAME ASSESSED, TO WHOM TRANSFERRED, DESCRIPTION OF PROPERTY, TRUE AND FULL VALUATIONS, ASSESSED VALUATIONS, VALUATIONS BY SCHOOL DISTRICTS AS EQUALIZED BY DEPARTMENT OF TAXATION, SOLD FOR TAXES, PAID, WHEN PAID, March Settlement, June Settlement, etc.

Assessment Roll and Tax List of Real Property in the Town of Pike Bay

FORM SCD MILLER-SAYRE COMPANY, MINNEAPOLIS

Table with columns: IN WHOSE NAME ASSESSED, TO WHOM TRANSFERRED, DESCRIPTION OF PROPERTY, TRUE AND FULL VALUATIONS, ASSESSED VALUATIONS, FINAL EQUALIZED VALUE.

Cass County, Minnesota, for Taxes for the Year 1949.

Table with columns: VALUATIONS BY SCHOOL DISTRICTS AS EQUALIZED BY DEPARTMENT OF TAXATION, SOLD FOR TAXES, TAXES, PAID, WHEN PAID, Number of Receipt, March Settlement 1950, June Settlement 1950, November Settlement 1950, Delinquent on First Monday in January 1951, Total Delinquent Tax and Penalty, REMARKS.

Peter Kornezos

State of Minnesota

State of Minnesota

State of Minnesota

Earl D. & Emily W. Foster

State of Minnesota

State of Minnesota

Frank R. Balsley

State of Minnesota

State of Minnesota

Frank R. Balsley

E. L. Waldron

State of Minnesota (Cont. to Alice S. Grandy)

Edward Rabin  
Fred J. De Witt

Abate #4233

7500 added mill 9 year house

SOLD FOR TAXES

SOLD FOR TAXES

July cont

H 74

2nd Half Paid OCT 27 1950 12999  
1st Half Paid MAY 23 1950 6593

2nd Half Paid OCT 27 1950 13078  
1st Half Paid MAY 12 1950 6107

2nd Half Paid OCT 27 1950 13078  
1st Half Paid MAY 12 1950 6107

2nd Half Paid JUL 20 1950 11738  
1st Half Paid MAY 31 1950 8796

2nd Half Paid JUL 20 1950 11738  
1st Half Paid MAY 31 1950 8796

2nd Half Paid OCT 20 1950 12866  
1st Half Paid JUL 6 1950 11224

Supplemental plat of... Harling-Jondahl Adm.

Supplemental plat of... Harling-Jondahl Adm.

Assessment Roll and Tax List of Real Property in the Town of Pike Bay

FORM 301 WILLY-BAY COMPANY, MINNEAPOLIS

Table with columns: IN WHOSE NAME ASSESSED, TO WHOM TRANSFERRED, DESCRIPTION OF PROPERTY, TRUE AND FULL VALUATIONS, ASSESSED VALUATIONS, FINAL EQUALIZED VALUE.

Continued on next Page

551 88

Cass County, Minnesota, for Taxes for the Year 1949.

Table with columns: VALUATIONS BY SCHOOL DISTRICTS AS EQUALIZED BY DEPARTMENT OF TAXATION, Tax including State Homestead, SPECIAL TAXES, TOTAL TAXES, PAID, WHEN PAID, Number of Receipt, March Settlement 1950, June Settlement 1950, November Settlement 1950, Penalty, Collections to First Monday in January 1951, Delinquent on First Monday in January 1951, Total Delinquent Tax and Penalty, REMARKS.

4 1038 281 1319

264 34 130 265 64

141 49 108 71

15 44

Supplemental part of Bug-E-Go-Me-ting Beach

Assessment Roll and Tax List of Real Property in the Town of Pike Bay,

FD 301 (5-31) WILKES-BAYE COMPANY, MINNEAPOLIS

IN WHOSE NAME ASSESSED	TO WHOM TRANSFERRED	DESCRIPTION OF PROPERTY				No. School District	Indicates Homestead Yes or No	Indicates Agricultural Yes or No	TRUE AND FULL VALUATIONS								FINAL EQUALIZED VALUE												
		SUBDIVISION	Sec. or Lot	Town or Block	Rng.				Number of Acres of Land	ASSESSED VALUATIONS					Total Assessed Value as Equalized by the Board of Review														
										LAND Exclusion of Structures and Improvements	BUILDINGS and Other Structures	MACHINERY Permanently Attached to Real Estate	TOTAL True and Full Value	RURAL		ALL OTHER		MACHINERY Permanently Attached to Real Estate											
<i>R. W. Campbell</i>		<i>SE 1/4 &amp; SE 1/4</i>	33 1/5	31	40	3			Homestead Up to \$4,000 20%		Over \$4,000 and Non-Homestead 33 1/3%		Homestead Up to \$4,000 25%		Over \$4,000 and Non-Homestead 40%		Dollars	Dollars											
		NW 1/4 of NE 1/4							NW 1/4 of NE 1/4	NW 1/4 of NE 1/4	20																		
		SW 1/4 of NE 1/4							SW 1/4 of NE 1/4	SW 1/4 of NE 1/4																			
		SE 1/4 of NE 1/4							SE 1/4 of NE 1/4	SE 1/4 of NE 1/4																			
<i>Hildwig A. Kling</i>		<i>E 1/2 of SE 1/4 of SW 1/4</i>						Homestead Up to \$4,000 20%		Over \$4,000 and Non-Homestead 33 1/3%		Homestead Up to \$4,000 25%		Over \$4,000 and Non-Homestead 40%		Dollars	Dollars												
		NE 1/4 of NW 1/4						NW 1/4 of NW 1/4	SW 1/4 of NW 1/4	SE 1/4 of NW 1/4	NE 1/4 of SW 1/4	NW 1/4 of SW 1/4	SW 1/4 of SW 1/4	SE 1/4 of SW 1/4	NE 1/4 of SE 1/4			NW 1/4 of SE 1/4	SW 1/4 of SE 1/4	SE 1/4 of SE 1/4									
														60															

Cass County, Minnesota, for Taxes for the Year 1949.

SOLD FOR TAXES	VALUATIONS BY SCHOOL DISTRICTS AS EQUALIZED BY DEPARTMENT OF TAXATION						Tax including State Homestead	State Tax on Non-Homestead	SPECIAL TAXES	TOTAL TAXES	PAID	WHEN PAID	Number of Receipt	March Settlement 1950	June Settlement 1950	Penalty	November Settlement 1950	Penalty	Collections to First Monday in January 1951	Penalty	Delinquent on First Monday in January 1951	Total Delinquent Tax and Penalty	REMARKS
	District No.	District No.	District No.	District No.	District No.	District No.																	
	Rate	Rate	Rate	Rate	Rate	Rate																	
	Mills	Mills	Mills	Mills	Mills	Mills																	
	Dollars	Dollars	Dollars	Dollars	Dollars	Dollars																	
1						1604	36		1640		2nd Half Paid	13658				820							
2											1st Half Paid	11635				820							
3																							
4																							
5						802			802		paid in full	6315		802									
6																							
7																							
8																							
9																							
10																							
11																							
12																							
13																							
14																							
15																							
16																							
17																							
18																							
19																							
20										2406	36		2442		802		1640						

An-Hung Point Auditor's Plat Harding-Jordahl Add.

Supplemental Plat of Bug-E-Zo-Me-Hing Beach





Assessment Roll and Tax List of Real Property in the *Town* of *Pike Bay*

FORM 500 WISCONSIN STATUTE, WISCONSIN

IN WHOSE NAME ASSESSED	TO WHOM TRANSFERRED	SUBDIVISION	Sec. or Lot	Town or Block	Rug.	Number of Acres of Land Acres 100ths	TRUE AND FULL VALUATIONS					ASSESSED VALUATIONS						FINAL EQUALIZED VALUE
							LAND Exclusive of Structures and Improvements	BUILDINGS and Other Structures	MACHINERY Permanently Attached to Real Estate	TOTAL True and Full Value	RURAL		ALL OTHER		MACHINERY Permanently Attached to Real Estate	TOTAL ASSESSED VALUE	Total Assessed Value as Equalized by the Board of Review	
											Homestead Up to \$4,000 20%	Over \$4,000 and Non-Homestead 33 1/3%	Homestead Up to \$4,000 25%	Over \$4,000 and Non-Homestead 40%				
<i>Chas. W., Ralph H., &amp; Robert Ottwein</i>	<i>Lucille Collins, Maxine Nelson, Edna Kane</i>	<i>Ad. Nung - Paint</i>	1	<i>A</i>														
<i>J. E. M. &amp; Helen Thomson</i>			2															
			3															
<i>Helen Y. Thomson</i>			4															
<i>O. R. Martin</i>			5															
<i>Hariet McDaniel Moore</i>			6															
			7															
			8															
<i>A. J. Starr</i>			9															
			10															
<i>Helen, Edith &amp; Alice Sherwood</i>			11															
			12			<i>W 1/2</i>												
<i>Robert L. &amp; Helen Brewster</i>			13			<i>E 1/2</i>												
			14															
<i>Harold G. &amp; Lorene E. Bender</i>			15															
			16															
<i>Charles &amp; Margaret R. Boreman</i>			17															
			18															
<i>A. J. Starr</i>			19															
			20															

Cass County, Minnesota, for Taxes for the Year 1949.

SOLD FOR TAXES	VALUATIONS BY SCHOOL DISTRICTS AS EQUALIZED BY DEPARTMENT OF TAXATION						Tax Including State Homestead	State Tax on Non-Homestead	SPECIAL TAXES	TOTAL TAXES	PAID	WHEN PAID	Number of Receipt	March Settlement 1950	June Settlement 1950	Penalty	November Settlement 1950	Penalty	Collections to First Monday in January 1951	Penalty	Delinquent on First Monday in January 1951	Total Delinquent Tax and Penalty	REMARKS
	District No.	District No.	District No.	District No.	District No.	District No.																	
	Rate	Rate	Rate	Rate	Rate	Rate																	
						<i>232</i>	<i>4974</i>	<i>106</i>		<i>5080</i>	<i>1</i>	<i>Part Paid MAY 31 1950</i>	<i>7769</i>		<i>2692</i>						<i>2388</i>		
						<i>220</i>	<i>4718</i>	<i>100</i>		<i>4818</i>	<i>2</i>	<i>PAID IN FULL MAY 5 1950</i>	<i>5564</i>		<i>4818</i>								
						<i>40</i>	<i>858</i>	<i>18</i>		<i>876</i>	<i>3</i>	<i>PAID IN FULL MAY 5 1950</i>	<i>5565</i>		<i>438</i>								
						<i>40</i>	<i>858</i>	<i>18</i>		<i>876</i>	<i>4</i>	<i>PAID IN FULL MAY 5 1950</i>	<i>5565</i>		<i>876</i>								
						<i>200</i>	<i>4288</i>	<i>92</i>		<i>4380</i>	<i>5</i>	<i>PAID IN FULL MAY 18 1950</i>	<i>6318</i>		<i>4380</i>								
						<i>40</i>	<i>858</i>	<i>18</i>		<i>876</i>	<i>6</i>	<i>PAID IN FULL MAY 18 1950</i>	<i>6318</i>		<i>876</i>								
						<i>40</i>	<i>858</i>	<i>18</i>		<i>876</i>	<i>7</i>	<i>PAID IN FULL MAY 1 1950</i>	<i>7288</i>		<i>876</i>								
						<i>252</i>	<i>5404</i>	<i>116</i>		<i>5520</i>	<i>8</i>	<i>PAID IN FULL MAY 1 1950</i>	<i>7288</i>		<i>5520</i>								
						<i>20</i>	<i>428</i>	<i>10</i>		<i>438</i>	<i>9</i>	<i>PAID IN FULL MAY 5 1950</i>	<i>5552</i>		<i>438</i>								
						<i>20</i>	<i>428</i>	<i>10</i>		<i>438</i>	<i>10</i>	<i>PAID IN FULL MAY 5 1950</i>	<i>5552</i>		<i>438</i>								
						<i>200</i>	<i>4288</i>	<i>92</i>		<i>4380</i>	<i>11</i>	<i>1st Half Paid OCT 31 1950</i>	<i>13981</i>		<i>2190</i>		<i>2190</i>						
						<i>20</i>	<i>428</i>	<i>10</i>		<i>438</i>	<i>12</i>	<i>1st Half Paid OCT 31 1950</i>	<i>13981</i>		<i>219</i>		<i>219</i>						
						<i>20</i>	<i>428</i>	<i>10</i>		<i>438</i>	<i>13</i>	<i>PAID IN FULL SEP 8 1950</i>	<i>12357</i>				<i>438</i>			<i>13</i>			
						<i>120</i>	<i>2572</i>	<i>54</i>		<i>2626</i>	<i>14</i>	<i>PAID IN FULL SEP 8 1950</i>	<i>12357</i>		<i>2626</i>		<i>2626</i>			<i>79</i>			
						<i>20</i>	<i>428</i>	<i>10</i>		<i>438</i>	<i>15</i>	<i>PAID IN FULL MAY 5 1950</i>	<i>5547</i>		<i>438</i>								
						<i>20</i>	<i>428</i>	<i>10</i>		<i>438</i>	<i>16</i>	<i>PAID IN FULL MAY 5 1950</i>	<i>5547</i>		<i>438</i>								
						<i>296</i>	<i>6346</i>	<i>136</i>		<i>6482</i>	<i>17</i>	<i>PAID IN FULL MAY 5 1950</i>	<i>5545</i>		<i>6482</i>								
						<i>20</i>	<i>428</i>	<i>10</i>		<i>438</i>	<i>18</i>	<i>PAID IN FULL MAY 5 1950</i>	<i>5545</i>		<i>438</i>								
						<i>20</i>	<i>428</i>	<i>10</i>		<i>438</i>	<i>19</i>	<i>2nd Half Paid OCT 31 1950</i>	<i>14240</i>							<i>438</i>	<i>482</i>		
						<i>20</i>	<i>428</i>	<i>10</i>		<i>438</i>	<i>20</i>	<i>1st Half Paid MAY 1 1950</i>	<i>7266</i>		<i>219</i>		<i>219</i>						
							<i>29874</i>	<i>858</i>		<i>40732</i>						<i>32214</i>	<i>5692</i>			<i>2826</i>			

AH NUNG POINT

Auditor's Plat Harding-Jordahl Adm.

Supplemental Plat of Bug-E-Do-Me-Ring Beach

Assessment Roll and Tax List of Real Property in the Town of Pike Bay,

Cass County, Minnesota, for Taxes for the Year 1949.

AH NUNG POINT

IN WHOSE NAME ASSESSED	TO WHOM TRANSFERRED	DESCRIPTION OF PROPERTY		TRUE AND FULL VALUATIONS					ASSESSED VALUATIONS					FINAL EQUALIZED VALUE
		SUBDIVISION	Sec. or Lot	Town or Block	Rng.	Number of Acres of Land	Machinery Permanently Attached to Real Estate	BUILDINGS and Other Structures	LAND Exclusive of Structures and Improvements	RURAL		ALL OTHER		
Acres	100ths									Homestead Up to \$4,000 20%	Over \$4,000 and Non-Homestead 33 1/3%	Homestead Up to \$4,000 25%	Over \$4,000 and Non-Homestead 40%	Dollars
		Ah-Nung Point												
L. A. J. Starr			20A											
J. Elizabeth C. Bond			21											
"			22											
"			23											
A. J. Starr			24											
"			25											
"			26											
"			27											
"			28											
"			29											
Beatrice Berthold			30											
"			31											
R Sydney Kendall Gold		Block B												
B. Mabelle Starr		" C												
R. Ralph W. + Lu Maye Starr		" D												
A. J. Starr		Playground - Exempt												

SOLD FOR TAXES	VALUATIONS BY SCHOOL DISTRICTS AS EQUALIZED BY DEPARTMENT OF TAXATION						Tax including State Homestead	State Tax on Non-Homestead	SPECIAL TAXES	TOTAL TAXES	PAID	WHEN PAID	Number of Receipt	March Settlement 1950	June Settlement 1950	Penalty	November Settlement 1950	Penalty	Collections to First Monday in January 1951	Penalty	Delinquent on First Monday in January 1951	Total Delinquent Tax and Penalty	REMARKS
	District No.	District No.	District No.	District No.	District No.	District No.																	
	Rate	Rate	Rate	Rate	Rate	Rate																	

Handwritten notes and corrections at the bottom of the left page.

Summary totals and additional handwritten notes at the bottom of the right page.

Auditor's Plat Harding-Jordahl Adm.

Supplemental Plat of Bug-E-To-Me-Bing Beach





Assessment Roll and Tax List of Real Property in the town of Pike Bay

Cass County, Minnesota, for Taxes for the Year 1949.

Form 50 - MILLER-BAYBOTH COMPANY, MINNEAPOLIS

Main table with columns: IN WHOSE NAME ASSESSED, TO WHOM TRANSFERRED, DESCRIPTION OF PROPERTY, TRUE AND FULL VALUATIONS, ASSESSED VALUATIONS, VALUATIONS BY SCHOOL DISTRICTS, SOLD FOR TAXES, SPECIAL TAXES, TOTAL TAXES, PAID, WHEN PAID, Number of Receipt, March Settlement 1950, June Settlement 1950, Penalty, November Settlement 1950, Collections to First Monday in January 1951, Delinquent on First Monday in January 1951, Total Delinquent Tax and Penalty, REMARKS.

AH NUNG POINT

Harding-Jondehl Adm.

Supp. Plat of Bug-E-Zo-We-Ning Beach

Auditor's Plat # 3

Assessment Roll and Tax List of Real Property in the Town of Pike Bay

Cass County, Minnesota, for Taxes for the Year 1949.

AH NUNG POINT

Harding-Jordahl Adm.

Supp. Plat of Bug-E-Zo-We-Ning Beach

IN WHOSE NAME ASSESSED	TO WHOM TRANSFERRED	DESCRIPTION OF PROPERTY			No. School District	Indicate Homestead Yes or No	Indicate Agricultural Yes or No	TRUE AND FULL VALUATIONS				ASSESSED VALUATIONS					FINAL EQUALIZED VALUE
		Subdivision	Sec. or Lot	Town or Block				Map	LAND Exclusive of Structures and Improvements	BUILDINGS and Other Structures	MACHINERY Permanently Attached to Real Estate	TOTAL True and Full Value	RURAL Homestead Up to \$4,000 20%	Over \$4,000 and Non-Homestead 33 1/3%	ALL OTHER Homestead Up to \$4,000 25%	Over \$4,000 and Non-Homestead 40%	
	Supplemental Plat of Bug-E-Zo-We-Ning Beach																
Albert J. Hale			13	B													
"			14														
Paul D. Smith			15														
"			16														
Reinhold + Lydia Schoenborn			1	E													
"			2														
"			3														
"			4														
Ruth + Louis Engel			5														
"			6														
"			7														
"			8														
"			9														
Carl H. + Genevieve Coombs			9														
"			10														
"			11														
"			12														
"			13														
"			14														
Leonard D. + Naomi R. Strobel			14														
Otto Norenberg			15														

SOLD FOR TAXES	VALUATIONS BY SCHOOL DISTRICTS AS EQUALIZED BY DEPARTMENT OF TAXATION						State Tax on Non-Homestead 4.58 Mills	SPECIAL TAXES	TOTAL TAXES	PAID	WHEN PAID	Number of Receipt	March Settlement 1950	June Settlement 1950	Penalty	November Settlement 1950	Penalty	Collections to First Monday in January 1951	Penalty	Delinquent on First Monday in January 1951	Total Delinquent Tax and Penalty	REMARKS
	District No. Rate Rate Rate Rate Rate	District No. Rate Rate Rate Rate Rate	District No. Rate Rate Rate Rate Rate	District No. Rate Rate Rate Rate Rate	District No. Rate Rate Rate Rate Rate	District No. Rate Rate Rate Rate Rate																
									200	04	204	1 PAID IN FULL	MAY 3 1 1950	8798		204						
									200	04	204	2 PAID IN FULL	MAY 3 1 1950	8798		204						
SOLD FOR TAXES									200	04	204	3									204	
SOLD FOR TAXES									200	04	204	4									204	
									1202	28	1230	6 PAID IN FULL	MAY 5 1950			1230						
									200	04	204	7 PAID IN FULL	MAY 5 1950	5546		204						
									200	04	204	8 PAID IN FULL	MAY 5 1950			204						
									200	04	204	9 PAID IN FULL	MAY 5 1950			204						
									200	04	204	10 PAID IN FULL	MAY 23 1950	6589		204						
									200	04	204	11 PAID IN FULL	MAY 23 1950	6589		204						
									200	04	204	12 PAID IN FULL	MAY 23 1950	6589		204						
									200	04	204	13 PAID IN FULL	MAY 23 1950	6589		204						
									160		160	14 PAID IN FULL	MAY 1 6 1950	6180		160						
									160		160	15 PAID IN FULL	MAY 1 6 1950	6180		160						
									160		160	16 PAID IN FULL	MAY 1 6 1950	6180		160						
									5512		5512	17 PAID IN FULL	MAY 1 6 1950	6180		5512						
									160		160	18 PAID IN FULL	MAY 1 6 1950	6180		160						
									160		160	19 PAID IN FULL	SEP 2 2 1950	12297			160	05				
									562		562	20 PAID IN FULL	MAY 3 1 1950	8195		562						
									10276	72	10348					7780		160			408	

Auditor's Plat # 3



### Assessment Roll and Tax List of Real Property in the Town of Pike Bay,

Cass County, Minnesota, for Taxes for the Year 1949.

IN WHOSE NAME ASSESSED		TO WHOM TRANSFERRED				DESCRIPTION OF PROPERTY		TRUE AND FULL VALUATIONS												FINAL EQUALIZED VALUE	SOLD FOR TAXES	VALUATIONS BY SCHOOL DISTRICTS AS ESTABLISHED BY DEPARTMENT OF TAXATION						SPECIAL TAXES	TOTAL TAXES	PAID	WHEN PAID	Number of Receipt	March Settlement 1950	June Settlement 1950	Penalty	November Settlement 1950	Penalty	Collections to First Monday in January 1951	Penalty	Delinquent on First Monday in January 1951	Total Delinquent Tax and Penalty	REMARKS
Acres	100ths	Sec.	Town or Block	Rng.	No. of Acres of Land	No. School District	Indicate Homestead Yes or No	Indicate Agricultural Yes or No	LAND Exclusive of Structures and Improvements	BUILDINGS and Other Structures	MACHINERY Permanently Attached to Real Estate	TOTAL True and Full Value	RURAL		ALL OTHER		MACHINERY Permanently Attached to Real Estate	TOTAL ASSESSED VALUE	Total Assessed Value as Equalized by the Board of Review			District No.	Rate	District No.	Rate	District No.	Rate															
Anna M. Hollister + James L. Lambrecht		Petra D. Hellman		Supplemental Plat 7 Bug-6-30-We-Ning Beach		11	E	3																																		
" "		" "		" "		2																																				
" "		" "		" "		3																																				
Byrle E. + Mary L. Bardell		Albert O. + Edna D. Hanson		" "		4																																				
" "		" "		" "		5																																				
" "		" "		" "		6																																				
" "		" "		" "		7																																				
Floyd A. Kufus		Jessie A. Cole		Julius Jessie Stephenson		1																																				
Melvin Colby		John Mittelstaedt		" "		2																																				
" "		" "		" "		3																																				
" "		" "		" "		4																																				
" "		" "		" "		5																																				
" "		" "		" "		6																																				
" "		" "		" "		7																																				
" "		" "		" "		8																																				
" "		" "		" "		9																																				
" "		" "		" "		10																																				
" "		" "		" "		11																																				
" "		" "		" "		12																																				
" "		" "		" "		13																																				
" "		" "		" "		14																																				
" "		" "		" "		15																																				
Melvin Cole		Donald Cole		Frank Cole		16																																				
" "		" "		" "		17																																				
" "		" "		" "		18																																				
Dale O. + Alta J. Lumley		Lorna M. Anderson		" "		19																																				
" "		" "		" "		20																																				

AH NUNG POINT

Harding-Jondahl Adm.

Supp. Plat of Bug-6-30-We-Ning Beach

Auditor's Plat # 3



Assessment Roll and Tax List of Real Property in the Town of Pike Bay

FORM 50 MILLER BATH COMPANY, MINNEAPOLIS

Table with columns for IN WHOSE NAME ASSESSED, TO WHOM TRANSFERRED, DESCRIPTION OF PROPERTY, TRUE AND FULL VALUATIONS, ASSESSED VALUATIONS, and FINAL EQUALIZED VALUE. Includes handwritten entries for Dale O. & Alta J. Lumley and Gerald A. & Florence V. Muller.

AH NUNG POINT

Harding-Jondehl Adm.

Supp. Plat of Bug-E-Zo-We-Ning Beach

Cass County, Minnesota, for Taxes for the Year 1949.

Table with columns for VALUATIONS BY SCHOOL DISTRICTS AS EQUALIZED BY DEPARTMENT OF TAXATION, TAXES, PAID, WHEN PAID, Number of Receipt, March Settlement 1950, June Settlement 1950, November Settlement 1950, Penalty, Collections to First Monday in January 1951, Delinquent on First Monday in January 1951, Total Delinquent Tax and Penalty, REMARKS. Includes handwritten entries and calculations.

Auditor's Plat # 3

Assessment Roll and Tax List of Real Property in the Town of Pike Bay

Cass County, Minnesota, for Taxes for the Year 1949.

Harding-Jondahl Auditor's Plat No. 3  
Supp. Plat of Bug-E-Zo-We-Wing Beach

Table with columns: IN WHOSE NAME ASSESSED, TO WHOM TRANSFERRED, DESCRIPTION OF PROPERTY, TRUE AND FULL VALUATIONS, ASSESSED VALUATIONS, FINAL EQUALIZED VALUE. Includes handwritten entries like 'Mark Burns', 'Wm. J. & Ruth A. Frank', 'Herbert Newstrand'.

Table with columns: SOLD FOR TAXES, ALLOCATIONS BY SCHOOL DISTRICTS AS EQUALIZED BY DEPARTMENT OF TAXATION, Tax including State Homestead, SPECIAL TAXES, TOTAL TAXES, PAID, WHEN PAID, Number of Receipt, March Settlement, June Settlement, November Settlement, Penalty, Collections to First Monday in January 1951, Delinquent on First Monday in January 1951, Total Delinquent Tax and Penalty, REMARKS. Includes handwritten entries like 'PAID IN FULL', '1st Half Paid', '2nd Half Paid'.

Assessment Roll and Tax List of Real Property in the Town of Pike Bay

FORM 50 - MILLER BAY COMPANY, MINNEAPOLIS

Table with columns: IN WHOSE NAME ASSESSED, TO WHOM TRANSFERRED, DESCRIPTION OF PROPERTY, TRUE AND FULL VALUATIONS, ASSESSED VALUATIONS, FINAL EQUALIZED VALUE. Includes entries for Auditors Plat # 3 and various property owners.

Note: Lots 19 to 24 in Village of Cass Lake

Vertical text on the left margin: AH. MINN. PRINT, Auditor's Plat No. 3, Harding-Jondahl, Supp. Plat of Bug-B-Ze-We-Ning Beach.

Cass County, Minnesota, for Taxes for the Year 1949.

Table with columns: VALUATIONS BY SCHOOL DISTRICTS, SOLD FOR TAXES, PAID, WHEN PAID, Number of Receipt, March Settlement, June Settlement, November Settlement, Collections to First Monday in January 1951, Delinquent on First Monday in January 1951, Total Delinquent Tax and Penalty. Includes handwritten tax amounts and dates.

Assessment Roll and Tax List of Real Property in the \_\_\_\_\_ of \_\_\_\_\_,

44 MING POINT Auditor's Plat No. 3

Harding-Jondahl

Supp. Plat of Bug-B-Zo-We-Ming Beach

IN WHOSE NAME ASSESSED	TO WHOM TRANSFERRED	DESCRIPTION OF PROPERTY					TRUE AND FULL VALUATIONS				ASSESSED VALUATIONS					FINAL EQUALIZED VALUE		
		SUBDIVISION	Sec. or Lot	Town or Block	Rng.	Number of Acres of Land	LAND Exclusive of Structures and Improvements	BUILDINGS and Other Structures	MACHINERY Permanently Attached to Real Estate	TOTAL True and Full Value	RURAL		ALL OTHER		MACHINERY Permanently Attached to Real Estate		TOTAL ASSESSED VALUE	Total Assessed Value as Equalized by the Board of Review
											Homestead Up to \$4,000 20%	Over \$4,000 and Non-Homestead 33 1/3%	Homestead Up to \$4,000 25%	Over \$4,000 and Non-Homestead 40%				
		Dollars	Dollars	Dollars	Dollars	Dollars	Dollars	Dollars	Dollars	Dollars	Dollars	Dollars	Dollars	Dollars	Dollars	Dollars		

Cass County, Minnesota, for Taxes for the Year 1949.

SOLD FOR TAXES	VALUATION LOCALIZED BY SCHOOL DISTRICTS AS EQUALIZED BY BOARD OF TALENT						Tax including State Homestead	State Tax on Non-Homestead	SPECIAL TAXES	TOTAL TAXES	PAID	WHEN PAID	Number of Receipt	March Settlement 1950	June Settlement 1950	Penalty	November Settlement 1950	Penalty	Collections to First Monday in January 1951	Penalty	Delinquent on First Monday in January 1951	Total Delinquent Tax and Penalty	REMARKS
	District No.	Rate	District No.	Rate	District No.	Rate																	
1																							
2																							
3																							
4																							
5																							
6	H	3772	9295	742	446	18961																	
7	H	3287	6817	4140	4208	18552																	
8		7265	16412	4892	8854	27512																	
9																							
10																							
11																							
12																							
13																							
14																							
15																							
16																							
17																							
18																							
19																							
20																							

Total =

Agric. Use 146864  
 Agric. #3 328894  
 Non-Agric. Use 104668  
 Non-Agric. #3 190720  


---

 771146 8476

779622

Assessment Roll and Tax List of Real Property in the \_\_\_\_\_ of \_\_\_\_\_

Form 50 WILLER-BAYNE COMPANY, MINNEAPOLIS

IN WHOSE NAME ASSESSED	TO WHOM TRANSFERRED	DESCRIPTION OF PROPERTY				TRUE AND FULL VALUATIONS			ASSESSED VALUATIONS					FINAL EQUALIZED VALUE				
		SUBDIVISION	Sec. or Lot	Town or Block	Rng.	Number of Acres of Land	TOTAL True and Full Value	RURAL		ALL OTHER		MACHINERY Permanently Attached to Real Estate	TOTAL ASSESSED VALUE		Total Assessed Value as Equalized by the Board of Review			
								Acres	100ths	Homestead Up to \$4,000	Over \$4,000 and Non-Homestead 33 1/3 %					Homestead Up to \$4,000	Over \$4,000 and Non-Homestead 40 %	
																		20 %
No. School District	Indicate Homestead Yes or No	Indicate Agricultural Yes or No	Dollars	Dollars	Dollars	Dollars	Dollars	Dollars	Dollars	Dollars	Dollars							

Cass County, Minnesota, for Taxes for the Year 1949.

SOLD FOR TAXES	VALUATIONS BY SCHOOL DISTRICTS AS EQUALIZED BY DEPARTMENT OF TAXATION						Tax including State Homestead	State Tax on Non-Homestead	SPECIAL TAXES	TOTAL TAXES	PAID	WHEN PAID	Number of Receipt	March Settlement 1950	June Settlement 1950	Penalty	November Settlement 1950	Penalty	Collections to First Monday in January 1951	Penalty	Delinquent on First Monday in January 1951	Total Delinquent Tax and Penalty	REMARKS
	District No.	District No.	District No.	District No.	District No.	District No.																	
	Rate	Rate	Rate	Rate	Rate	Rate																	
	Mills	Mills	Mills	Mills	Mills	Mills																	
	Dollars	Dollars	Dollars	Dollars	Dollars	Dollars	\$ cts.	\$ cts.	\$ cts.	\$ cts.	Month Day Year		\$ cts.	\$ cts.	\$ cts.	\$ cts.	\$ cts.	\$ cts.	\$ cts.	\$ cts.	\$ cts.	\$ cts.	

A. H. WING POINT  
Auditor's Plat No. 3  
Harding-Jondahl  
Supp. Plat of  
Bug-E-Zo-We-Ning Beach





