

ASSESSMENT & TAX LIST - 1962  
Pike Bay

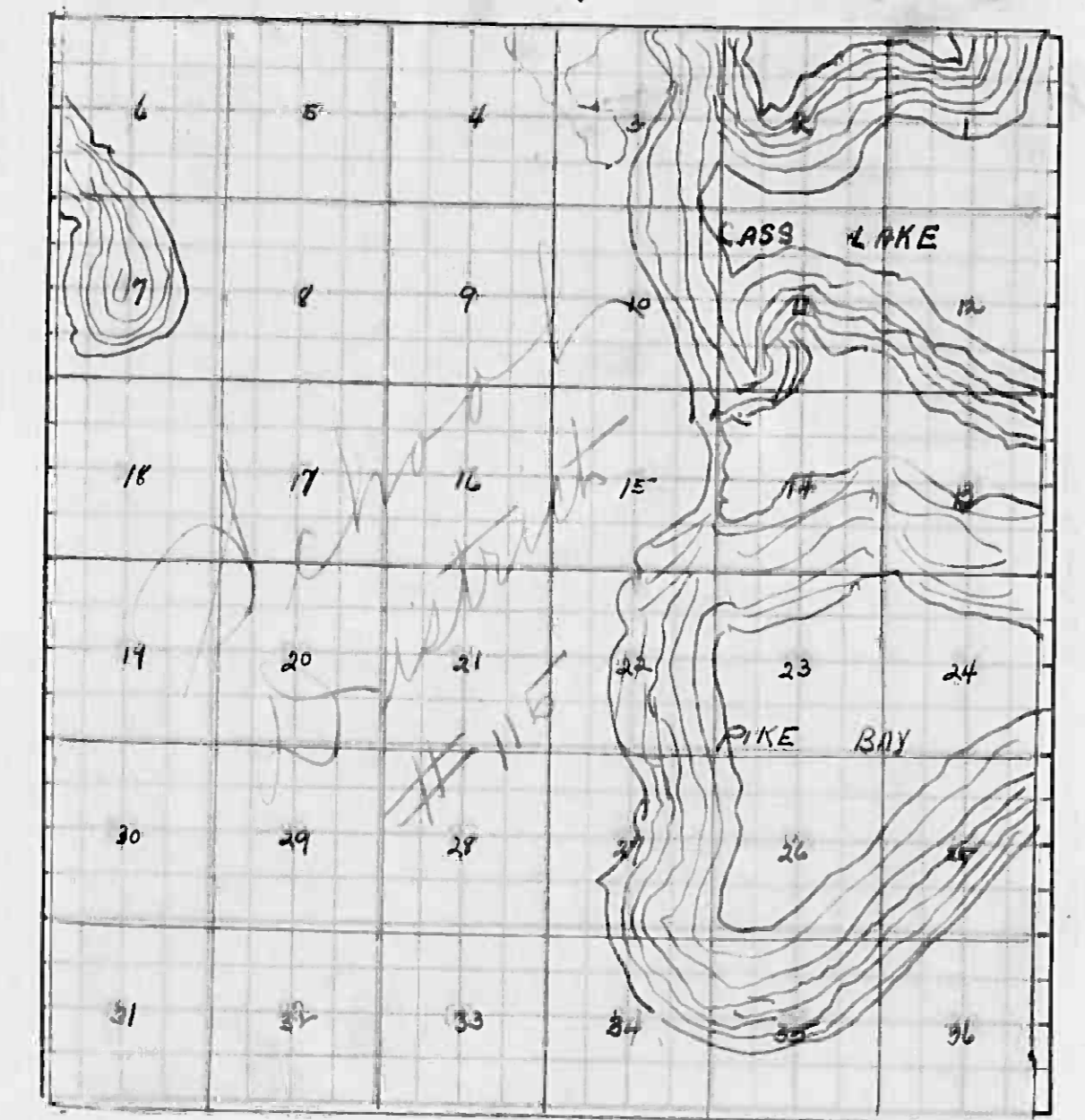
**INDEX TO SECTIONS**

SECTION PAGE

Sec. 1.....	
" 2.....	
" 3.....	
" 4.....	
" 5.....	
" 6.....	
" 7.....	
" 8.....	
" 9.....	
" 10.....	
" 11.....	
" 12.....	
" 13.....	
" 14.....	
" 15.....	
" 16.....	
" 17.....	
" 18.....	
" 19.....	
" 20.....	
" 21.....	
" 22.....	
" 23.....	
" 24.....	
" 25.....	
" 26.....	
" 27.....	
" 28.....	
" 29.....	
" 30.....	
" 31.....	
" 32.....	
" 33.....	
" 34.....	
" 35.....	
" 36.....	

For Convenience of Auditor in Showing Boundaries of School Districts

Township No. Township No. 45 Range - 31 Mer. P. M.



Returns Showing Grain Received in or Handled by Elevators, Warehouses and Mills in the \_\_\_\_\_ of \_\_\_\_\_ in the  
 County of \_\_\_\_\_ for the Year Ending May 1, 1962.

NAMES OF OWNERS	ADDRESS	SUBDIVISION 1				Total Subdivision 1 No. Bushels	★ Tax of 1/2 Mill per Bushel Dollars Cts.	SUBDIVISION 2					Total Subdivision 2 No. Bushels	★ Tax of 1/4 Mill Per Bushel Dollars Cts.	★ Total Tax Dollars Cts.	REMARKS
		Bushels of Wheat	Bushels of Soy Beans	Bushels of Flax	Bushels of Rye			Bushels of Oats	Bushels of Buckwheat	Bushels of Other Grains						
		Bushels of Corn	Bushels of Barley	Bushels of Rye	Bushels of Oats			Bushels of Buckwheat	Bushels of Other Grains							

Note ★ Assessors will not fill these Columns

Real Estate

Ap. Nure  
Port  
In  
Harding Jordan  
Addition  
Supplemental Plat  
B-20-10-Ming Beach  
Auditor's  
Plat # 3  
Little  
Look-Out

**SUMMARY OF TAX COLLECTION**

Original Levy	=	=	=	=	=	\$	58,910.44
Additions	=	=	=	=	=	\$	
Abatements	=	=	=	=	=	\$	375.16
						\$	58,535.28

**COLLECTIONS**

March Settlement	=	=	=	=	=	\$	30,364.27
June Settlement	=	=	=	=	=	\$	13,619.32
November Settlement	=	=	=	=	=	\$	11,595.84
January Settlement	=	=	=	=	=	\$	329.50
						\$	58,908.93
Over Collected	=	=	=	=	=	\$	73.66
Under Collected	=	=	=	=	=	\$	
Delinquent	=	=	=	=	=	\$	2760.01
Total	=	=	=	=	=	\$	58,595.28

Abundant Inn  
 Point on  
 Real Estate  
 Harding Jordan  
 Addition  
 Supplemental Plat  
 Big E-Zo-We-Sing Beach  
 Auditor's  
 Plat # 1  
 Little Noi  
 Look-Out



FUNDS	MARCH SETTLEMENT 1962	JUNE SETTLEMENT 1963	NOV. SETTLEMENT 1963	Amount Collected from Nov. 1962 to First Monday in Jan. 1963	REDUCTIONS	Total Reductions and Collected	BALANCE UNCOLLECTED	ADDITIONS	Total Uncollected to First Monday in January, 1963
State-Non-Homestead	702 90	197 65	167 79	250					
State-Homestead	684 20	334 34	279 12	768					
County Revenue	2798 01	1304 51	1101 54	3075					
County Road and Bridge	1744 94	813 54	686 76	1917					
County Welfare	4339 66	2023 28	1708 46	4769					
County Bond and Interest	1192 66	550 06	469 54	1311					
PERA	461 54	215 18	181 70	507					
C. Nurse	79 39	37 02	31 26	87					
C. N. Sleds	174 49	81 35	68 70	192					
Town Revenue	157 81	70 78	59 77	167					
Town Road and Bridge	354 22	165 15	139 44	389					
Town State Loan									
Sum	151 81	70 78	59 77	167					
School Local 1 Mill									
School Special	4281 94	1573 69	1426 75	4784					
School State Loan									
Deficiency	10469 62	4881 25	4121 75	11504					
Tuition									
Transportation									
C. O	697 98	325 42	274 79	767					
B. V. 9	1308 71	610 15	515 22	1438					
PERA	610 73	284 74	240 43	671					
C. O. Imp.	32 28	15 05	12 71	35					
Agri. Assn	43 62	20 33	17 47	49					
Transp.	88 76	39 05	32 97	73					
	31364 27	13619 32	11595 84	32960					

	School District No.	LOCAL 1 MILL.	SPECIAL.	STATE LOAN	Deficiency	c. o.	B. V. 9	PERA	TOTALS
MARCH SETTLEMENT	115 a		80 39		385 88	25 73	48 24	23 51	562 75
	115 na		4201 55		10082 74	672 25	1260 47	588 22	16806 23
	Totals		4281 94		10469 62	697 98	1308 71	610 73	17368 98
JUNE SETTLEMENT	115 a		460 15		2208 74	147 25	276 09	128 84	3221 07
	115 na		1113 54		2672 51	178 17	334 06	155 90	4454 18
	Totals		1573 69		4881 25	325 42	610 15	284 74	7675 25
NOVEMBER SETTLEMENT	115 a		290 65		1395 11	93 01	74 59	81 38	3039 54
	115 na		1136 10		3736 64	181 78	340 28	159 05	4544 40
	Totals		1426 75		4121 75	274 79	515 22	240 43	6578 94
NOVEMBER to JANUARY	115 na		479 4		1150 4	76 7	143 8	67 1	1917 4
	Totals		479 4		1150 4	76 7	143 8	67 1	1917 4
	Totals								
ADDITIONS									
	Totals								
	Totals								
REDUCTIONS									
	Totals								
	Totals								

Real Estate  
 Auditor's  
 Plat # 3  
 Little Wolf  
 Look-Out  
 Supplemental Plat  
 B. V. 9-20-Me-Ning Beach  
 Harding Jondahl  
 Auditor's  
 Addition  
 Point on  
 Ah Nung Inn

Assessor's Return of Exempt Real Property in the \_\_\_\_\_ of \_\_\_\_\_ County of \_\_\_\_\_, Minnesota, for the Year 1962

FORM 2 DICER-DAVIS CO., MINNEAPOLIS

NAMES OF OWNERS	DESCRIPTION				FOR WHAT PURPOSE USED	TRUE AND FULL VALUATIONS				ASSESSED VALUATIONS		REMARKS		
	SUBDIVISION	Sec. or Lot	Town or Block	Range		No. of Acres		LAND Exclusive of Structures and Improvements Dollars	BUILDINGS and Other Structures Dollars	MACHINERY Permanently Attached to Real Estate Dollars	TOTAL True and Full Value Dollars		Rural Including Machinery	All Other
						Acres	100ths						33 1/3%	40%
Village / Clear Lake	SE 1/4 NW 1/4 SE 1/4	9	145	31		10		180	60		240	80		
Village / Clear Lake	SW 1/4 SW 1/4	15	145	31		40		600			600	200		
Pike Bay Township	W 33' of East 133' / 554 8' of SE 1/4 NE 1/4	16	145	31				45			45	15		

Real Estate

A. N. Nung  
 Auditor  
 H. J. Jordan  
 Auditor  
 B. E. Z. Nung  
 Auditor  
 Little  
 Auditor  
 Look-Out

Assessment Roll and Tax List of Real Property in the Down of Pike Day

Form 5C13—MILLER-DAVIS CO., MINNEAPOLIS

\* Indicate Type of Property: R-Residential, C-Commercial, I-Industrial, U-Utility, F-Farm, L-Lakeshore, T-Timber, M-Mineral

Cass County, Minnesota, for Taxes for the Year 1962.

IN WHOSE NAME ASSESSED	DESCRIPTION OF PROPERTY				No. School District	Indicate Homestead Yes or No	Agricultural or Recreational Yes or No	Indicate Type of Property	TRUE AND FULL VALUATIONS														SOLD FOR TAXES	VALUATIONS BY SCHOOL DISTRICTS AS EQUALIZED BY DEPARTMENT OF TAXATION										PAID	WHEN PAID	Number of Receipt	March Settlement 1963	June Settlement 1963	Penalty 1963	November Settlement 1963	Penalty 1963	Collections to First Monday in January 1964	Penalty 1964	Delinquent on First Monday in January 1964	Total Delinquent Tax and Penalty	REMARKS																																																
	SUBDIVISION	Sec. or Lot	Town or Block	Acres of Land					No. of Acres	LAND Exclusive of Structures and Improvements	BUILDINGS and Other Structures	MACHINERY Permanently Attached to Real Estate	TOTAL True and Full Value	RURAL				ALL OTHER				TOTAL ASSESSED VALUE		Total Assessed Value as Equalized by the Board of Review	FINAL EQUALIZED VALUE	District No.	District No.	District No.	District No.	District No.	District No.	Tax Including State Homestead	State Tax on Non-Homestead														SPECIAL TAXES	SPECIAL TAXES	TOTAL TAXES	PAID	WHEN PAID	Number of Receipt	March Settlement 1963	June Settlement 1963	Penalty 1963	November Settlement 1963	Penalty 1963	Collections to First Monday in January 1964	Penalty 1964	Delinquent on First Monday in January 1964	Total Delinquent Tax and Penalty																																	
														Homestead Up to \$4,000 20%	Over \$4,000 and Non-Homestead 33 1/2%	Timber Land Class 3e 20%	Homestead Up to \$4,000 25%	Over \$4,000 and Non-Homestead 40%	MACHINERY Permanently Attached to Real Estate 33 1/2%	Seasonal and Recreational Cabins 33 1/2%	Rate																																									Rate	Rate	Rate	Rate	Rate																												
														Dollars	Dollars	Dollars	Dollars	Dollars	Dollars	Dollars	Dollars																																									Dollars	Dollars	Dollars	Dollars	Dollars	Dollars	Dollars	Dollars	Dollars	Dollars	Dollars	Dollars	Dollars	Dollars	Dollars	Dollars	Dollars	Dollars	Dollars	Dollars	Dollars	Dollars	Dollars	Dollars	Dollars	Dollars	Dollars	Dollars	Dollars	Dollars	Dollars	Dollars	Dollars
														Dollars	Dollars	Dollars	Dollars	Dollars	Dollars	Dollars	Dollars																																									Dollars	Dollars	Dollars	Dollars	Dollars	Dollars	Dollars	Dollars	Dollars	Dollars	Dollars	Dollars	Dollars	Dollars	Dollars	Dollars	Dollars	Dollars	Dollars	Dollars	Dollars	Dollars	Dollars	Dollars	Dollars	Dollars	Dollars	Dollars	Dollars	Dollars	Dollars	Dollars	Dollars
	N E 1/4 of N E 1/4	1	14531	115																																																																																										
	N W 1/4 of N E 1/4																																																																																													
	S W 1/4 of N E 1/4																																																																																													
	S E 1/4 of N E 1/4																																																																																													
	N E 1/4 of N W 1/4																																																																																													
	N W 1/4 of N W 1/4																																																																																													
	S W 1/4 of N W 1/4																																																																																													
	S E 1/4 of N W 1/4																																																																																													
	N E 1/4 of S W 1/4																																																																																													
	N W 1/4 of S W 1/4																																																																																													
	S W 1/4 of S W 1/4																																																																																													
	S E 1/4 of S W 1/4																																																																																													
	N E 1/4 of S E 1/4																																																																																													
	N W 1/4 of S E 1/4																																																																																													
	S W 1/4 of S E 1/4																																																																																													
	S E 1/4 of S E 1/4																																																																																													

GOV'T LOT 1 PLATTED (Star Island)

Appling Jonahni  
 Handling  
 Addition  
 B-20-We-Ning Beach  
 Auditor's  
 Little Foot  
 Look-Out

Assessment Roll and Tax List of Real Property in the Saw of Little Bay

\* Indicate Type of Property: R-Residential, C-Commercial, I-Industrial, U-Utility, F-Farm, L-Lakeshore, T-Timber, M-Mineral

Form 301 MILLER-DAVIS CO. MINNEAPOLIS

IN WHOSE NAME ASSESSED	DESCRIPTION OF PROPERTY			No. School District	Indicate Homestead Yes or No	Agricultural Yes or No	Indicate Type of Property	TRUE AND FULL VALUATIONS												FINAL EQUALIZED VALUE	
	SUBDIVISION	Sec. or Lot	Town or Block					Number of Acres of Land	LAND Exclusive of Structures and Improvements	BUILDINGS and Other Structures	MACHINERY Permanently Attached to Real Estate	TOTAL True and Full Value	RURAL		ASSESSED VALUATIONS						
													Acres 100ths	Homestead Up to \$4,000 20%	Over \$4,000 and Non-Homestead 33 1/3%	Timber Land Class 3e 20%	Homestead Up to \$4,000 25%	Over \$4,000 and Non-Homestead 40%	MACHINERY Permanently Attached to Real Estate 33 1/3%		Seasonal and Recreational Cabins 33 1/3%
								Dollars	Dollars	Dollars	Dollars	Dollars	Dollars	Dollars	Dollars	Dollars	Dollars				

*Stanley Johnson*

GOVT LOE 3

GOVT LOE 4

Cass County, Minnesota, for Taxes for the Year 1962.

SOLD FOR TAXES	VALUATIONS BY SCHOOL DISTRICTS AS EQUALIZED BY DEPARTMENT OF TAXATION						Tax Including State Homestead	State Tax on Non-Homestead	SPECIAL TAXES	SPECIAL TAXES	TOTAL TAXES	PAID	WHEN PAID	Number of Receipt	March Settlement 1963	June Settlement 1963	Penalty 1963	November Settlement 1963	Penalty	Collections to First Monday in January 1964	Penalty	Delinquent on First Monday in January 1964	Total Delinquent Tax and Penalty	REMARKS
	District No.	District No.	District No.	District No.	District No.	District No.																		
	Rate	Rate	Rate	Rate	Rate	Rate																		

NA

PAID IN FULL APR 15 1963

At Long Inn Point on Harding Johnson Addition Big B-20-M-King Beach Auditor's Plat # 3 Little Mt



Assessment Roll and Tax List of Real Property in the Town of Elk Bay

\* Indicate Type of Property: R-Residential, C-Commercial, I-Industrial, U-Utility, F-Farm, L-Lakeshore, T-Timber, M-Mineral

Cass County, Minnesota, for Taxes for the Year 1962.

Table with columns: IN WHOSE NAME ASSESSED, DESCRIPTION OF PROPERTY, TRUE AND FULL VALUATIONS, ASSESSED VALUATIONS, VALUATIONS BY SCHOOL DISTRICTS AS EQUALIZED BY DEPARTMENT OF TAXATION, TAX INCLUDING STATE HOMESTEAD, SPECIAL TAXES, PAID, WHEN PAID, Number of Receipt, March Settlement 1963, June Settlement 1963, November Settlement 1963, Collections to First Monday in January 1964, Delinquent on First Monday in January 1964, Total Delinquent Tax and Penalty, REMARKS. Rows include property owners like Frank & Elizabeth Schneider, Thomas & Josephine Accardo, Melvin & Bessie M. Newstrand, etc.

Vertical text on the right edge: Auditor's Office, Little Hill, Look-Out, Plat # 3, Bag B-20-Me-Ming Beech, Supplemental Plat, Harding Jondahl Addition, Inn, Point on



Assessment Roll and Tax List of Real Property in the Town of Pike Bay

\* Indicate Type of Property: R-Residential, C-Commercial, I-Industrial, U-Utility, F-Farm, L-Lakeshore, T-Timber, M-Mineral

Cass County, Minnesota, for Taxes for the Year 1962.

Table with columns: IN WHOSE NAME ASSESSED, DESCRIPTION OF PROPERTY, TRUE AND FULL VALUATIONS, ASSESSED VALUATIONS, VALUATIONS BY SCHOOL DISTRICTS AS EQUALIZED BY DEPARTMENT OF TAXATION, TAXES, PAID, WHEN PAID, March Settlement, June Settlement, November Settlement, Collections to First Monday in January 1964, Delinquent on First Monday in January 1964, Total Delinquent Tax and Penalty, REMARKS.

Real Estate

Ab Nung Point

Harding Jondahl

Supplemental Part

Big E-Zo-Wo-Ning Beach

Auditor's Plat # 8

Little No. 1

Assessment Roll and Tax List of Real Property in the Town of Pike Bay

\* Indicate Type of Property: R-Residential, C-Commercial, I-Industrial, U-Utility, F-Farm, L-Lakeshore, T-Timber, M-Mineral

Cass County, Minnesota, for Taxes for the Year 1962.

Table with columns: IN WHOSE NAME ASSESSED, DESCRIPTION OF PROPERTY, TRUE AND FULL VALUATIONS, ASSESSED VALUATIONS, VALUATIONS BY SCHOOL DISTRICTS AS EQUALIZED BY DEPARTMENT OF TAXATION, TAXES, PAID, WHEN PAID, Number of Receipt, March Settlement 1963, June Settlement 1963, November Settlement 1963, Collections to First Monday in January 1964, Delinquent on First Monday in January 1964, Total Delinquent Tax and Penalty, REMARKS.

Real Estate

Ad Name Point on Handling Jonathan Addition Bag B-20-We-Ning Beach Auditor's Plat # 8 Little No Look-Out

Assessment Roll and Tax List of Real Property in the Town of Pike Bay, Cass County, Minnesota, for Taxes for the Year 1962.

Cass County, Minnesota, for Taxes for the Year 1962.

Main table with columns: IN WHOSE NAME ASSESSED, DESCRIPTION OF PROPERTY, TRUE AND FULL VALUATIONS, ASSESSED VALUATIONS, VALUATIONS BY SCHOOL DISTRICTS AS EQUALIZED BY DEPARTMENT OF TAXATION, TAXES, PAID, WHEN PAID, Number of Receipt, March Settlement 1961, June Settlement 1961, Penalty, November Settlement 1961, Penalty, Collections to First Monday in January 1962, Penalty, Delinquent on First Monday in January 1962, Total Delinquent Tax and Penalty, REMARKS.

Vertical text on the right edge: An Nung Inn Point on Harding Jordan's Supplemental Part Bag E-20-Me-Ming Beach Auditor's Plat # 3 Life no Look-out





Assessment Roll and Tax List of Real Property in the Town of Pike Bay

\* Indicate Type of Property: R-Residential, C-Commercial, I-Industrial, U-Utility, F-Farm, L-Lakeshore, T-Timber, M-Mineral

Table with columns: IN WHOSE NAME ASSESSED, DESCRIPTION OF PROPERTY, TRUE AND FULL VALUATIONS, ASSESSED VALUATIONS, FINAL EQUALIZED VALUE. Includes handwritten entries for various property owners like H.H. Richmond and Dean A. Christensen.

(Contn on next page)

Cass County, Minnesota, for Taxes for the Year 1962.

Table with columns: SOLD FOR TAXES, VALUATIONS BY SCHOOL DISTRICTS AS EQUALIZED BY DEPARTMENT OF TAXATION, SPECIAL TAXES, TOTAL TAXES, PAID, WHEN PAID, Number of Receipt, March Settlement 1963, June Settlement 1963, November Settlement 1963, Collections to First Monday in January 1964, Delinquent on First Monday in January 1964, Total Delinquent Tax and Penalty, REMARKS. Includes handwritten entries and tax calculations.

Vertical text on the right edge of the page, including 'Auditor's Plat # 3' and other administrative markings.





















Assessment Roll and Tax List of Real Property in the Town of Pike Bay, Cass County, Minnesota

Form 300 - MILLER-DAVIS CO., MINNEAPOLIS

\* Indicate Type of Property: R-Residential, C-Commercial, I-Industrial, U-Utility, F-Farm, L-Lakeshore, T-Timber, M-Mineral

Table with columns: IN WHOSE NAME ASSESSED, SUBDIVISION, Acres, 100ths, No. School District, Ind. Home-stand, Agri. Recr., Indicate Type of Property, TRUE AND FULL VALUATIONS (LAND, BUILDINGS, MACHINERY, TOTAL), RURAL (Homestead, Over \$4,000), ALL OTHER (Timber, Homestead, Over \$4,000), MACHINERY, Seasonal and Recreational Cabins, TOTAL ASSESSED VALUE, Total Assessed Value as Equalized by the Board of Review, FINAL EQUALIZED VALUE.

(Continued on next page)

Cass County, Minnesota, for Taxes for the Year 1962.

Table with columns: SOLD FOR TAXES, VALUATIONS BY SCHOOL DISTRICTS AS EQUALIZED BY DEPARTMENT OF TAXATION (District No., Rate, etc.), Tax Including State Homestead, State Tax on Non-Homestead, SPECIAL TAXES, TOTAL TAXES, PAID, WHEN PAID, Number of Receipt, March Settlement, June Settlement, November Settlement, Collections to First Monday in January 1964, Delinquent on First Monday in January 1964, Total Delinquent Tax and Penalty, REMARKS.

Vertical text on the right edge: Auditor's Office, Little Wolf, Look-Out, etc.

Assessment Roll and Tax List of Real Property in the Town of Pike Bay

Indicate Type of Property: R-Residential, C-Commercial, I-Industrial, U-Utility, F-Farm, L-Lakeshore, T-Timber, M-Mineral

Form SCD, MILLER-DAVIS CO., MINNEAPOLIS

Table with columns: IN WHOSE NAME ASSESSED, DESCRIPTION OF PROPERTY, TRUE AND FULL VALUATIONS, ASSESSED VALUATIONS, FINAL EQUALIZED VALUE. Includes handwritten entries for various property owners like Wm A. Clark, Le Roy J. & Betty M. Ellis, etc.

Cass County, Minnesota, for Taxes for the Year 1962.

Table with columns: SOLD FOR TAXES, VALUATIONS BY SCHOOL DISTRICTS AS EQUALIZED BY DEPARTMENT OF TAXATION, Tax Including State Homestead, State Tax on Non-Homestead, SPECIAL TAXES, TOTAL TAXES, PAID, WHEN PAID, Number of Receipt, March Settlement 1963, June Settlement 1963, Penalty, November Settlement 1963, Penalty, Collections to First Monday in January 1964, Penalty, Delinquent on First Monday in January 1964, Total Delinquent Tax and Penalty, REMARKS. Includes handwritten notes like 'A NA', '316 31', '854', '440', '1853'.

Vertical text on the right edge: Auditor's Office, Look-Out, Hardening Jordan, Addition, Bag, E-20-Me-Ning Beach, Supplemental Parc

SW 1/4 - SE 1/4 SEC. 16 - 145 - 31

RAINES

Hwy. # 371

528'

165'

P. ANDERSON

D. BOHN

165'

C. RIGGLES

C. RIGGLES

CLIFFORD &  
CLARA RIGGLES

M. SEVERSON

302'

300'

226'

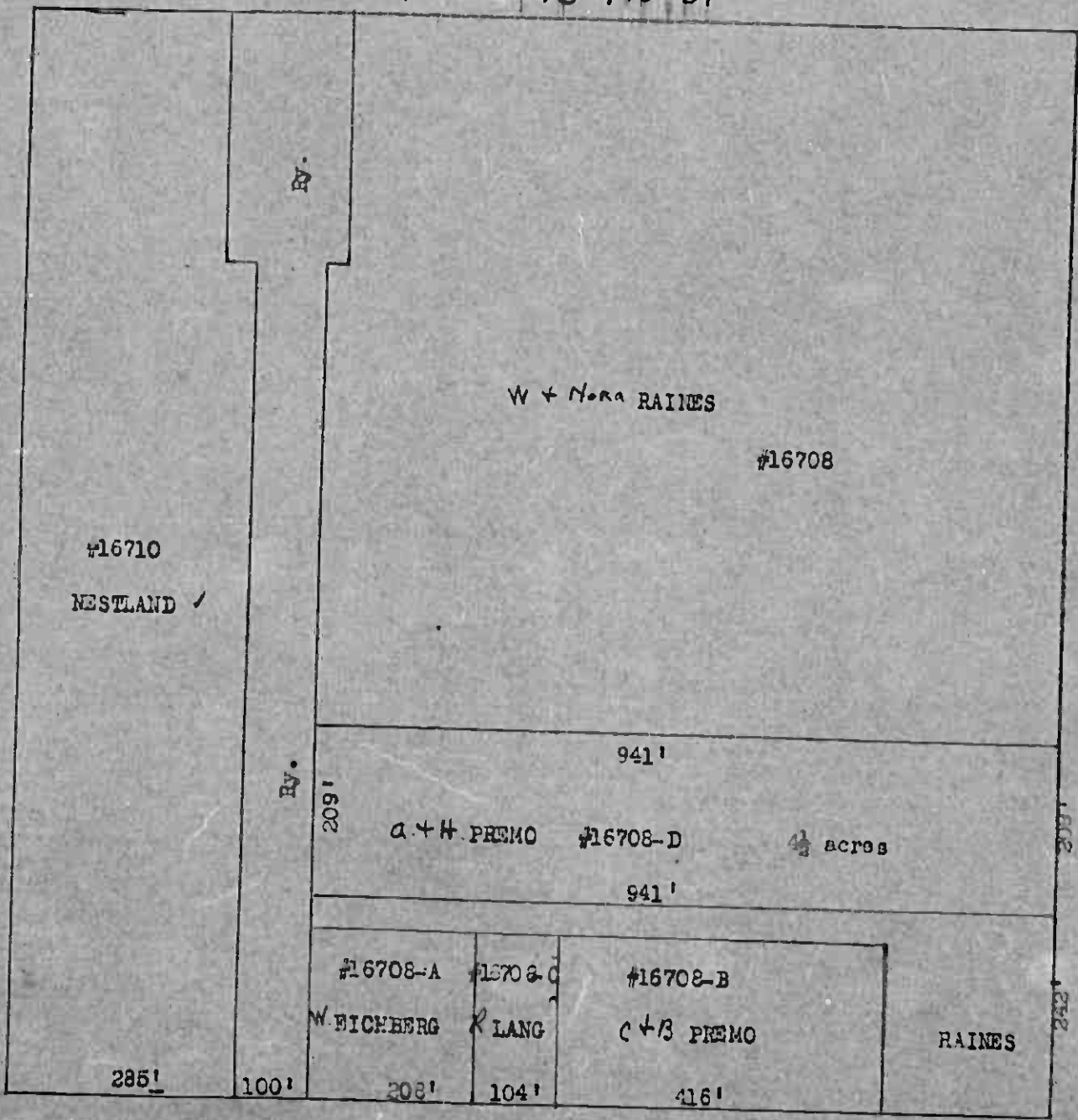
302'

302'

190'

# 371

SE 1/4 - SW 1/4 - SEC. 16 - 145 - 31



Assessment Roll and Tax List of Real Property in the Town of Pike Bay

Form 302-MILLER-DAVIS CO., MINNEAPOLIS

\* Indicate Type of Property: R-Residential, C-Commercial, I-Industrial, U-Utility, F-Farm, L-Lakeshore, T-Timber, M-Mineral

Cass County, Minnesota, for Taxes for the Year 1962.

Table with columns: IN WHOSE NAME ASSESSED, SUBDIVISION, No. School District, Indicate Home-stead, Agri. Rec., Indicate Type of Property, TRUE AND FULL VALUATIONS (LAND, BUILDINGS, MACHINERY, TOTAL), ASSESSED VALUATIONS (RURAL, ALL OTHER), FINAL EQUALIZED VALUE.

contin. next page

Table with columns: VALUATIONS BY SCHOOL DISTRICTS AS EQUALIZED BY DEPARTMENT OF TAXATION, SOLID FOR TAXES, TAXES PAID, TAX WHEN PAID, SPECIAL TAXES, TOTAL TAXES, PAID, WHEN PAID, Number of Receipts, March Settlement 1963, June Settlement 1963, Penalty, November Settlement 1963, Penalty, Collections to First Monday in January 1964, Penalty, Delinquent on First Monday in January 1964, Total Delinquent Tax and Penalty, REMARKS.

Handing Jordan, Auditor's Office, Additions, Supplemantal Plat, Bag 20-Me-Nire Beach, Auditor's Plat # 3, Little Vol 1, Look-Out

Assessment Roll and Tax List of Real Property in the *Down* of *Pike Bay*

Form 500 MILLER-DAVIES MINNEAPOLIS

\* Indicate Type of Property: R-Residential, C-Commercial, I-Industrial, U-Utility, F-Farm, L-Lakeshore, T-Timber, M-Mineral

IN WHOSE NAME ASSESSED	DESCRIPTION OF PROPERTY			No. School District	Indicate Homestead Yes or No	Agricultural Use Yes or No	Indicate Type of Property	TRUE AND FULL VALUATIONS				ASSESSED VALUATIONS								FINAL EQUALIZED VALUE			
	SUBDIVISION	Sec. or Lot	Town or Rng. Block					Number of Acres of Land	LAND Exclusive of Structures and Improvements	BUILDINGS and Other Structures	MACHINERY Permanently Attached to Real Estate	TOTAL True and Full Value	RURAL				ALL OTHER				TOTAL ASSESSED VALUE	Total Assessed Value as Equalized by the Board of Review	
													Acres	100ths	Homestead Up to \$4,000 20%	Over \$4,000 and Non-Homestead 33 1/3%	Timber Land Class 3e 20%	Homestead Up to \$4,000 25%	Over \$4,000 and Non-Homestead 40%				MACHINERY Permanently Attached to Real Estate 33 1/3%
								Dollars	Dollars	Dollars	Dollars	Dollars	Dollars	Dollars	Dollars	Dollars	Dollars	Dollars	Dollars				
	1	NE 1/4 of NE 1/4	17	145	31																		
	2	NW 1/4 of NE 1/4																					
	3	SW 1/4 of NE 1/4																					
State of Minnesota	4	SE 1/4 of NE 1/4																					
	5	GOVT LOT 5 Less R/R																					
	6	NW 1/4 of NW 1/4																					
	7	NW 1/4 of NW 1/4																					
	8	SW 1/4 of NW 1/4																					
State of Minnesota	9	SE 1/4 of NW 1/4																					
	10	GOVT LOT 6 Less R/R																					
	11	NE 1/4 of SW 1/4																					
	12	NW 1/4 of SW 1/4																					
	13	SW 1/4 of SW 1/4																					
	14	SE 1/4 of SW 1/4																					
	15																						
	16	NE 1/4 of SE 1/4																					
	17	NW 1/4 of SE 1/4																					
	18	SW 1/4 of SE 1/4																					
	19	SE 1/4 of SE 1/4																					
	20																						

Cass County, Minnesota, for Taxes for the Year 1962.

SOLD FOR TAXES	VALUATIONS BY SCHOOL DISTRICTS AS EQUALIZED BY DEPARTMENT OF TAXATION						Tax including State Homestead	State Tax on Non-Homestead	SPECIAL TAXES	SPECIAL TAXES	TOTAL TAXES	PAID	WHEN PAID	Number of Receipt	March Settlement 1962	June Settlement 1962	Penalty November 1962	Penalty January 1963	Collections to First Monday in January 1963	Penalty January 1963	Delinquent on First Monday in January 1963	Total Delinquent Tax and Penalty	REMARKS
	District No.	District No.	District No.	District No.	District No.	District No.																	
	Rate	Rate	Rate	Rate	Rate	Rate																	
	1																						
	2																						
	3																						
	4																						
	5																						
	6																						
	7																						
	8																						
	9																						
	10																						
	11																						
	12																						
	13																						
	14																						
	15																						
	16																						
	17																						
	18																						
	19																						
	20																						

Auditor's Office  
 Auditor's Plat # 3  
 Supplemental Plat  
 Big E-Zo-We-Ning Beach  
 Harding, Johnson  
 Addition

Assessment Roll and Tax List of Real Property in the Down of Lake Park \* Indicate Type of Property: R-Residential, C-Commercial, I-Industrial, U-Utility, F-Farm, L-Lakeshore, T-Timber, M-Mineral

Form 500 MILLER-DAVIS CO., MINNEAPOLIS

Table with columns: IN WHOSE NAME ASSESSED, DESCRIPTION OF PROPERTY, TRUE AND FULL VALUATIONS, ASSESSED VALUATIONS, and FINAL EQUALIZED VALUE. Includes entries for State of Minnesota, John Kames, Philip Lucille S. Sweeney, and The Northwest Paper Co.

Cass County, Minnesota, for Taxes for the Year 1962.

Table with columns: VALUATIONS BY SCHOOL DISTRICTS AS EQUALIZED BY DEPARTMENT OF TAXATION, TAXES, PAID, WHEN PAID, and REMARKS. Includes entries for Sold for Taxes, Paid in Full, and various tax amounts.

Vertical text on the right margin: Harding Jordan, Auditor's Office, Little Hill, Look-Out, Plat # 3.





Assessment Roll and Tax List of Real Property in the Town of Pike Bay

Cass County, Minnesota, for Taxes for the Year 1962.

Table with columns: IN WHOSE NAME ASSESSED, DESCRIPTION OF PROPERTY, TRUE AND FULL VALUATIONS, ASSESSED VALUATIONS, and FINAL EQUALIZED VALUE. Includes entries for George & Hazel Ellith, THE NORTHWEST PAPER CO., and Robert J. Richards.

Table with columns: VALUATIONS BY SCHOOL DISTRICTS AS EQUALIZED BY DEPARTMENT OF TAXATION, TAX INCLUDING STATE HOMESTEAD, SPECIAL TAXES, PAID, WHEN PAID, and REMARKS. Includes handwritten notes and dates like 'PAID IN FULL MAY 31 1963'.

Vertical text on the right edge: Harding Jondahl, Auditor's Plat # 3, Look-Out.

Assessment Roll and Tax List of Real Property in the Town of Pike Bay

\* Indicate Type of Property: R-Residential, C-Commercial, I-Industrial, U-Utility, F-Farm, L-Lakeshore, T-Timber, M-Mineral

Table with columns: IN WHOSE NAME ASSESSED, DESCRIPTION OF PROPERTY, TRUE AND FULL VALUATIONS, ASSESSED VALUATIONS, and FINAL EQUALIZED VALUE. Includes entries for Wheeler Lumber Bridge & Supply Co., THE NORTHWEST PAPER CO., and various individuals like Reuben H. & Sarah J. Diller.

Cass County, Minnesota, for Taxes for the Year 1962.

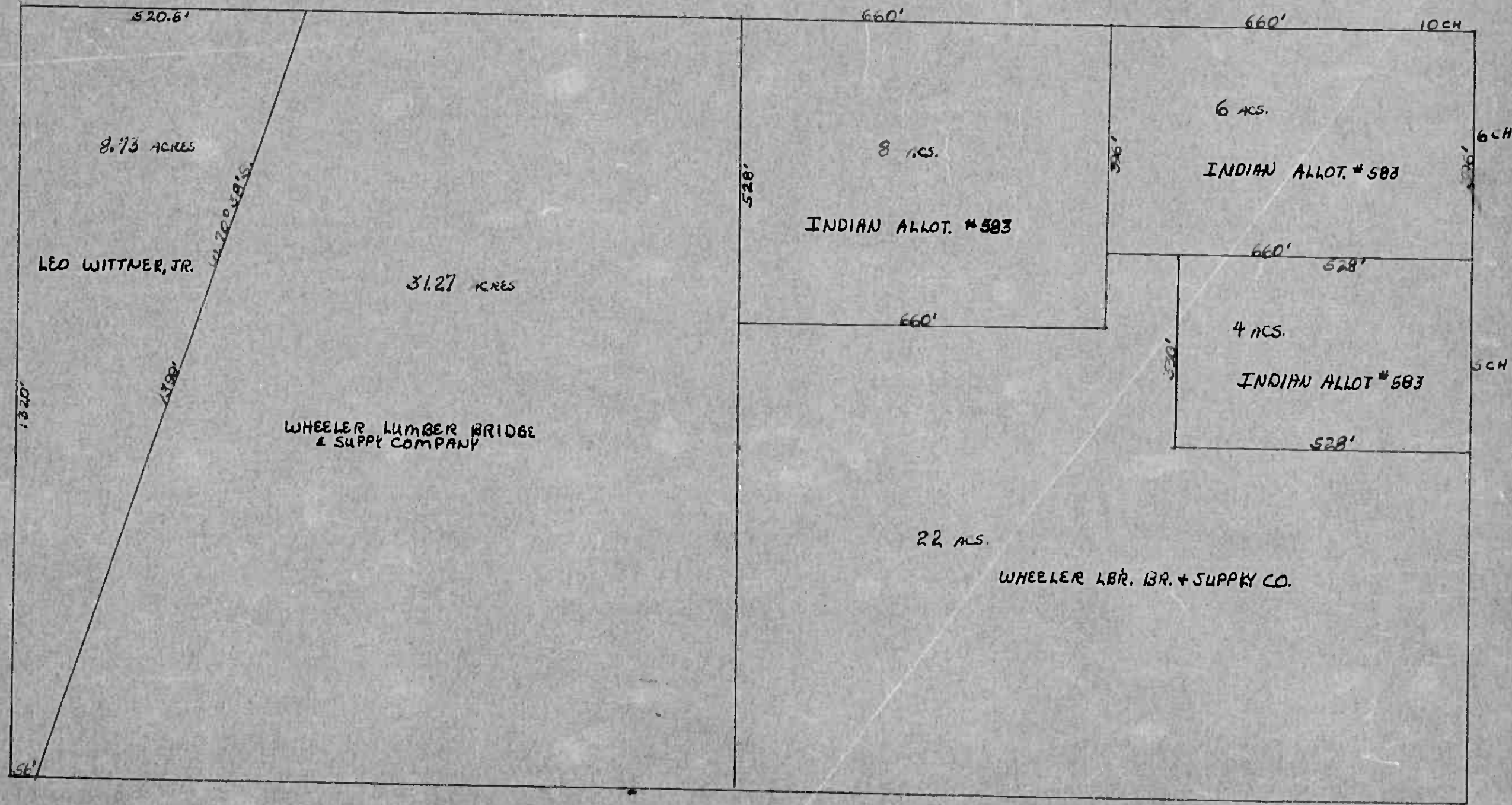
Table with columns: VALUATIONS BY SCHOOL DISTRICTS AS EQUALIZED BY DEPARTMENT OF TAXATION, TAX INCLUDING STATE, SPECIAL TAXES, PAID, WHEN PAID, and REMARKS. Includes handwritten notes like 'SOLD FOR TAXES' and '1/2 HALF PAID'.

Vertical text on the right edge: Auditor's Office, Auditor's Name, and other administrative markings.

N 1/2 - NE 1/4  
SEC. 21-145-31

NW-NE

NE-NE



8.73 ACRES

LEO WITTNER, JR.

31.27 ACRES

WHEELER LUMBER BRIDGE  
& SUPPLY COMPANY

8 ACS.

INDIAN ALLOT. #583

6 ACS.

INDIAN ALLOT. #583

4 ACS.

INDIAN ALLOT #583

22 ACS.

WHEELER LBR. BR. + SUPPLY CO.

520.6'

660'

660'

10 CH

1320'

4380'

528'

528'

660'

528'

660'

528'

528'

6 CH

6 CH

56'



Assessment Roll and Tax List of Real Property in the Town of Pike Bay, Cass County, Minnesota, for Taxes for the Year 1962.  
 \* Indicate Type of Property: R-Residential, C-Commercial, I-Industrial, U-Utility, F-Farm, L-Lakeshore, T-Timber, M-Mineral

Cass County, Minnesota, for Taxes for the Year 1962.

IN WHOSE NAME ASSESSED	DESCRIPTION OF PROPERTY			No. School District	Ind. case Homestead or No	Agricult. Rec. Yes or No	Ind. case Type of Property	TRUE AND FULL VALUATIONS				ASSESSED VALUATIONS						SOLD FOR TAXES	VALUATIONS BY SCHOOL DISTRICTS AS EQUALIZED BY DEPARTMENT OF TAXATION						Tax including State Homestead	State Tax on Non-Homestead	SPECIAL TAXES	SPECIAL TAXES	TOTAL TAXES	PAID	WHEN PAID	Number of Receipt	March Settlement 1963	June Settlement 1963	November Settlement 1963	Penalty	Collections to First Monday in January 1964	Penalty	Delinquent on First Monday in January 1964	Total Delinquent Tax and Penalty	REMARKS		
	Subdivision	Sec. or Lot	Town or Block					Number of Acres of Land	LAND Exclusive of Structures and Improvements	BUILDINGS and Other Structures	MACHINERY Permanently Attached to Real Estate	TOTAL True and Full Value	RURAL	ALL OTHER	MACHINERY Permanently Attached to Real Estate	Seasonal and Recreational Cabins	TOTAL ASSESSED VALUE		Total Assessed Value as Equalized by the Board of Review	FINAL EQUALIZED VALUE	District No.	District No.	District No.	District No.																		District No.	District No.
Charles Melander				40				225	540			765	153	153	1																												
Lasetta O. + Karen J. Hoglund				40				240				240	70	70	2											PAID IN FULL JUL 30 1963	14923																
Lasetta O. + Karen J. Hoglund				32 48				235	582			867	299	299	6											PAID IN FULL JUL 30 1963	14923																
Franklin Olson				32 48				180				180	60	60	9																												
Melvin + Millie Thompson				8				128	3157			3285	457	457	10											2nd HALF PAID NOV 18 1963	21669																
Herschel L. + Ruby B. Stierwalt				24 44				156	102			258	86	86	11											HALF PAID JUL 11 1963	14749																
Ernest Hinkemeyer				40				240				240	48	48	12											PAID IN FULL MAY 17 1963																	
Elmer Olson				40				540	525			1065	213	213	13											PAID IN FULL MAY 17 1963																	
Herman + Hilding A. Kling				8				620	600			1220	156	156	14											HALF PAID MAY 10 1963																	
Herschel L. + Ruby B. Stierwalt				24				195				195	39	39	15											HALF PAID MAY 9 1963																	
Louis M. + Bertha Bisson				40				360	142			502	100	100	17											PAID IN FULL MAY 17 1963																	
H. H. Richmond				40				240	95			335	67	67	18											PAID IN FULL MAY 17 1963																	
				40				165				165	55	55	19											PAID IN FULL MAY 17 1963																	
				40				2125	1174			3299	991	991	20																												

Auditor's Office  
 Little Hill  
 Look-Out  
 Plat # 3  
 Supplemental Year  
 Bag E-20-Me-Ning Beach  
 Addition  
 Hardly on hand  
 10/164  
 10/164  
 10/161  
 10/162  
 21708  
 21731  
 286  
 16480  
 16480  
 16480  
 16480  
 16480



Assessment Roll and Tax List of Real Property in the Town of Pine Bay, Cass County, Minnesota, for Taxes for the Year 1962.

Cass County, Minnesota, for Taxes for the Year 1962.

Form SCD MILLER-DAVIS CO., MINNEAPOLIS

\* Indicate Type of Property: R-Residential, C-Commercial, I-Industrial, U-Utility, F-Farm, L-Lakeshore, T-Timber, M-Mineral

Main table with columns for Description of Property, True and Full Valuations, Assessed Valuations, Final Equalized Value, Sold for Taxes, and Valuations by School Districts. Includes handwritten entries for property owners like Leland E. Russell and Duane & Frances Kintermeyer.

Vertical text on the right edge of the page, including 'Auditor's Office' and 'Title Office'.

Assessment Roll and Tax List of Real Property in the Town of Down of Pike Bay, Minnesota

Form 300-MILLER-DAVIS CO., MINNEAPOLIS

\* Indicate Type of Property: R-Residential, C-Commercial, I-Industrial, U-Utility, F-Farm, L-Lakeshore, T-Timber, M-Mineral

Cass County, Minnesota, for Taxes for the Year 1962.

Main table with columns: IN WHOSE NAME ASSESSED, DESCRIPTION OF PROPERTY, TRUE AND FULL VALUATIONS, ASSESSED VALUATIONS, VALUATIONS BY SCHOOL DISTRICTS AS EQUALIZED BY DEPARTMENT OF TAXATION, TAXES, PAID, WHEN PAID, and REMARKS. Includes handwritten entries for Carl D. & Emily Foster, Adolph & Emma Hornblad, Nora Reuter, and David & Mary Louise.

Vertical text on the right edge: Ap. No., Harding Jordan, Auditor's Addition, B-20-M-Ning Beach, Supplemental Plat, Auditor's Plat # 3, Little Wolf Look-Out













Assessment Roll and Tax List of Real Property in the Town of Pike Bay

\* Indicate Type of Property: R-Residential, C-Commercial, I-Industrial, U-Utility, F-Farm, L-Lakeshore, T-Timber, M-Mineral

50 MILLER-DAVIS CO. MINNEAPOLIS

Table with columns: IN WHOSE NAME ASSESSED, DESCRIPTION OF PROPERTY, TRUE AND FULL VALUATIONS, ASSESSED VALUATIONS, and FINAL EQUALIZED VALUE. Includes handwritten entries for names like Florence R. Menger and Charles Boreman.

Cass County, Minnesota, for Taxes for the Year 1962.

Table with columns: VALUATIONS BY SCHOOL DISTRICTS AS EQUALIZED BY DEPARTMENT OF TAXATION, TAXES, PAID, WHEN PAID, and REMARKS. Includes handwritten notes and dates like 'PAID IN FULL MAY 24 1963'.

Ab Hung Point

Supplemental Plat... Auditor's Plat # 3... Little Point Look-Out

Assessment Roll and Tax List of Real Property in the Town of Pike Bay

Form 3-C MILLER-DAVIS CO., MINNEAPOLIS

\* Indicate Type of Property: R-Residential, C-Commercial, I-Industrial, U-Utility, F-Farm, L-Lakeshore, T-Timber, M-Mineral

Table with columns: IN WHOSE NAME ASSESSED, DESCRIPTION OF PROPERTY, TRUE AND FULL VALUATIONS, ASSESSED VALUATIONS, and FINAL EQUALIZED VALUE. Includes handwritten entries for property owners like Rosalind Mary Margaret Martin and Elizabeth C. Good.

Cass County, Minnesota, for Taxes for the Year 1962.

Table with columns: VALUATIONS BY SCHOOL DISTRICTS AS EQUALIZED BY DEPARTMENT OF TAXATION, TAXES, PAID, WHEN PAID, and REMARKS. Includes handwritten entries for tax payments and dates.

Vertical text on the right edge: Harding Jondahl, Auditor's Office, Little Wolf, Look-out.

Assessment Roll and Tax List of Real Property in the South of Pike Bay

Form 30 MILLER-DAVIS CO., MINNEAPOLIS

\* Indicate Type of Property: R-Residential, C-Commercial, I-Industrial, U-Utility, F-Farm, L-Lakeshore, T-Timber, M-Mineral

Harding Johndahl Addition

Table with columns: IN WHOSE NAME ASSESSED, DESCRIPTION OF PROPERTY, TRUE AND FULL VALUATIONS, ASSESSED VALUATIONS, and FINAL EQUALIZED VALUE. Includes handwritten entries for Nelson O. Helland, Donald L. Norenberg, Elmer Hallstrom, and others.

Cass County, Minnesota, for Taxes for the Year 1962.

Table with columns: VALUATIONS BY SCHOOL DISTRICTS AS EQUALIZED BY DEPARTMENT OF TAXATION, TAXES, PAID, WHEN PAID, and various settlement and penalty columns. Includes handwritten entries for districts H 180, H 12, H 7, H 2, H 188, H 120, and H 533.

Supplemental Plat

Big R-Zo-Me-Ning Beach

Auditor's Plat # 3

Little Wolf



Assessment Roll and Tax List of Real Property in the Down of Pike Bay Wisconsin

Cass County, Minnesota, for Taxes for the Year 1962.

\* Indicate Type of Property: R-Residential, C-Commercial, I-Industrial, U-Utility, F-Farm, L-Lakeshore, T-Timber, M-Mineral

Harding Jondahl Addition

Table with columns: IN WHOSE NAME ASSESSED, DESCRIPTION OF PROPERTY, TRUE AND FULL VALUATIONS, ASSESSED VALUATIONS, VALUATIONS BY SCHOOL DISTRICTS AS EQUALIZED BY DEPARTMENT OF TAXATION, TAXES, PAID, WHEN PAID, etc. Includes handwritten entries for Frank Sobies, Russell & Shirley Smith, Rodney & Nina S. Mc Kenneth, Frank & Margaret Sobies, Lawrence & D'Ann Sobies, etc.

Supplemental Tax Auditor's Plat # 3 Little Rock Look-out



Assessment Roll and Tax List of Real Property in the Town of Pike Bay

\* Indicate Type of Property: R-Residential, C-Commercial, I-Industrial, U-Utility, F-Farm, L-Lakeshore, T-Timber, M-Mineral

Cass County, Minnesota, for Taxes for the Year 1962.

Form 5C-MILLER-DAVIS CO., MINNEAPOLIS

IN WHOSE NAME ASSESSED	DESCRIPTION OF PROPERTY	Sec. or Lot or Block	Town or Rng.	Number of Acres of Land	No. School District	Indicate Homestead Yes or No	Agricultural Yes or No	Indicate Type of Property	TRUE AND FULL VALUATIONS		ASSESSED VALUATIONS						TOTAL ASSESSED VALUE	Total Assessed Value as Equalized by the Board of Review	FINAL EQUALIZED VALUE		
									LAND Exclusive of Structures and Improvements	BUILDINGS and Other Structures	MACHINERY Permanently Attached to Real Estate	TOTAL True and Full Value	RURAL			ALL OTHER					
													Homestead Up to \$4,000 20%	Over \$4,000 and Non-Homestead 33 1/3%	Timber Land Class Bc 20%	Homestead Up to \$4,000 25%				Over \$4,000 and Non-Homestead 40%	MACHINERY Permanently Attached to Real Estate 33 1/3%
Paul D. Smith	SUPPLEMENTAL PLAT OF Bug-E-Zo-Wo-Ning Beach SUBDIVISION GOVT LOT 9 Sec. 10-145-31	1	H	<i>Acres 2.3</i>	115				90	3600		3690	23.5				3690	23.5			
" "	" "	2	"	"	"				120	5400		5520	100				5520	100			
Alfred A. & Aylce M. Heitschmidt	" "	3	"	"	"				105	800		1957	608				1957	608			
" "	" "	4	"	"	"				105	800		1957	423				1957	423			
" "	" "	5	"	"	"				105	800		1957	303				1957	303			
" "	" "	6	"	"	"				105	800		1957	297				1957	297			
" "	" "	7	"	"	"				105	800		1957	657				1957	657			
" "	" "	8	"	"	"				105	800		1957	53				1957	53			

NA

SOLD FOR TAXES	VALUATIONS BY SCHOOL DISTRICTS AS EQUALIZED BY DEPARTMENT OF TAXATION						Tax Including State Homestead	State Tax on Non-Homestead	SPECIAL TAXES	SPECIAL TAXES	TOTAL TAXES	PAID	WHEN PAID	Number of Receipt	March Settlement 1963	June Settlement 1963	Penalty	November Settlement 1963	Penalty	Collections to First Monday in January 1964	Penalty	Delinquent on First Monday in January 1964	Total Delinquent Tax and Penalty	REMARKS
	District No.	District No.	District No.	District No.	District No.	District No.																		
	Rate	Rate	Rate	Rate	Rate	Rate																		

Auditor's Office  
 Plat # 5  
 Littlefield  
 Look-Out

Assessment Roll and Tax List of Real Property in the Town of Pike Bay

\* Indicate Type of Property: R-Residential, C-Commercial, I-Industrial, U-Utility, F-Farm, L-Lakeshore, T-Timber, M-Mineral

Form 5C MILLER-DAVIS CO., MINNEAPOLIS

DESCRIPTION OF PROPERTY

TRUE AND FULL VALUATIONS

ASSESSED VALUATIONS

VALUATIONS BY SCHOOL DISTRICTS AS EQUALIZED BY DEPARTMENT OF TAXATION

Table with columns for IN WHOSE NAME ASSESSED, SUBDIVISION, Section or Lot, Town or Block, No. School District, Indicate Homestead, Agri. or Near, Ind. or Recreational, LAND, BUILDINGS, MACHINERY, TOTAL True and Full Value, RURAL, ALL OTHER, MACHINERY, Seasonal and Recreational Cabins, TOTAL ASSESSED VALUE, Total Assessed Value as Equalized by the Board of Review, FINAL EQUALIZED VALUE, SOLD FOR TAXES, District No., District No., District No., District No., District No., District No., Tax Including State Homestead, State Tax on Non-Homestead, SPECIAL TAXES, SPECIAL TAXES, TOTAL TAXES, PAID, WHEN PAID, Number of Receipt, March Settlement, June Settlement, Penalty, November Settlement, Penalty, Collections to First Monday in January 1964, Penalty, Delinquent on First Monday in January 1964, Total Delinquent Tax and Penalty, REMARKS.

Cass County, Minnesota, for Taxes for the Year 1962.

Harding Johndal Addition Bug E-Zo-We-Ning Beach

Auditor's Plat # 3

Assessment Roll and Tax List of Real Property in the Town of Pike Bay

\* Indicate Type of Property: R-Residential, C-Commercial, I-Industrial, U-Utility, F-Farm, L-Lakeshore, T-Timber, M-Mineral

Form 30-MILLER-DAVIS CO., MINNEAPOLIS

Harding Johndahl Addition Supplemental Plat Bug E-Zo-We-Ning Beach

Table with columns for IN WHOSE NAME ASSESSED, DESCRIPTION OF PROPERTY, and TRUE AND FULL VALUATIONS. Includes names like Harold E. & Bertha H. Hughes, Ruth Engel, and Leonard E. & Naomis R. Strobel.

Table with columns for VALUATIONS BY SCHOOL DISTRICTS AS EQUALIZED BY DEPARTMENT OF TAXATION and TAXES. Includes columns for District No., Rate, and Tax amounts.

Cass County, Minnesota, for Taxes for the Year 1962.

Vertical text on the far right edge of the page, including 'Antifer's Plat # 8' and 'Latter not Look-Out'.

Assessment Roll and Tax List of Real Property in the Town of Pike Bay

Form 3C MILLER-DAVIS CO., MINNEAPOLIS

\* Indicate Type of Property: R-Residential, C-Commercial, I-Industrial, U-Utility, F-Farm, L-Lakeshore, T-Timber, M-Mineral

Cass County, Minnesota, for Taxes for the Year 1962.

Harding Johndahl Addition Supplemental Plat Bug E-20-We-Ning Beach

Table with columns: IN WHOSE NAME ASSESSED, DESCRIPTION OF PROPERTY, TRUE AND FULL VALUATIONS, ASSESSED VALUATIONS, FINAL EQUALIZED VALUE. Includes handwritten entries for Edna D. Hanson, Arthur P. & Borghild, Randall L. & Donna J. Price, Otto & Mary Mae Rosenberg.

Table with columns: SOLD FOR TAXES, VALUATIONS BY SCHOOL DISTRICTS AS EQUALIZED BY DEPARTMENT OF TAXATION, Tax Including State Homestead, State Tax on Non-Homestead, SPECIAL TAXES, TOTAL TAXES, PAID, WHEN PAID, Number of Receipt, March Settlement 1963, June Settlement 1963, Penalty, November Settlement 1963, Collections to First Monday in January 1964, Delinquent on First Monday in January 1964, Total Delinquent Tax and Penalty, REMARKS. Includes handwritten entries for district 9207 and 9209.

Vertical text on the right edge: Auditor's Plat # 3, Little not look-out

Assessment Roll and Tax List of Real Property in the Town of Pike Bay

Form 5C MILLER-DAVIS CO., MINNEAPOLIS

\* Indicate Type of Property: R-Residential, C-Commercial, I-Industrial, U-Utility, F-Farm, L-Lakeshore, T-Timber, M-Mineral

Cass County, Minnesota, for Taxes for the Year 1962.

Harding Johndahl Addition Supplemental Plat Bug E-Zo-We-Ning Beach

Table with columns for IN WHOSE NAME ASSESSED, DESCRIPTION OF PROPERTY, TRUE AND FULL VALUATIONS, ASSESSED VALUATIONS, VALUATIONS BY SCHOOL DISTRICTS AS EQUALIZED BY DEPARTMENT OF TAXATION, SOLD FOR TAXES, PAID, WHEN PAID, Number of Receipt, March Settlement 1963, June Settlement 1963, Penalty, November Settlement 1963, Penalty, Collections to First Monday in January 1964, Delinquent on First Monday in January 1964, Total Delinquent Tax and Penalty, REMARKS.

Auditor's Plat # 3 Little Note Look-Out

Assessment Roll and Tax List of Real Property in the Town of Pike Bay

\* Indicate Type of Property: R-Residential, C-Commercial, I-Industrial, U-Utility, F-Farm, L-Lakeshore, T-Timber, M-Mineral

Point

Harding Jobdahl Addition

Supplemental Plat Bug E-Zo-We-Ning Beach

Table with columns: IN WHOSE NAME ASSESSED, SUPPLEMENTAL PLAT SUBDIVISION, DESCRIPTION OF PROPERTY, TRUE AND FULL VALUATIONS, ASSESSED VALUATIONS, FINAL EQUALIZED VALUE.

Cass County, Minnesota, for Taxes for the Year 1962.

Table with columns: VALUATIONS BY SCHOOL DISTRICTS AS EQUALIZED BY DEPARTMENT OF TAXATION, TAX INCLUDING STATE HOMESTEAD, SPECIAL TAXES, TOTAL TAXES, PAID, WHEN PAID, March Settlement 1963, June Settlement 1963, Penalty, November Settlement 1963, Collections to First Monday in January 1964, Delinquent on First Monday in January 1964, Total Delinquent Tax and Penalty, REMARKS.

HELD

SUB

100

100

100

100

100

100

100

100

100

100

100



Assessment Roll and Tax List of Real Property in the Town of Pike Bay

Form 5C MILLER-DAVIS CO., MINNEAPOLIS

\* Indicate Type of Property: R-Residential, C-Commercial, I-Industrial, U-Utility, F-Farm, L-Lakeshore, T-Timber, M-Mineral

Table with columns: IN WHOSE NAME ASSESSED, DESCRIPTION OF PROPERTY, TRUE AND FULL VALUATIONS, ASSESSED VALUATIONS, and FINAL EQUALIZED VALUE. Includes handwritten entries for various property owners like Loren & Jeanette Zuelow and Leo P. & Irene J. Schaak.

Vertical text on the left margin: Auditor's Plat # 5, Supplemental Plat Bug E-Zo-Wing Beach, Harding-Jordahl Addition

Cass County, Minnesota, for Taxes for the Year 1962.

Table with columns: VALUATIONS BY SCHOOL DISTRICTS AS EQUALIZED BY DEPARTMENT OF TAXATION, TAX INCLUDING STATE HOMESTEAD, SPECIAL TAXES, PAID, WHEN PAID, and REMARKS. Includes handwritten entries for various districts and tax amounts.

Vertical text on the right margin: Auditor's Plat # 5, Supplemental Plat Bug E-Zo-Wing Beach, Harding-Jordahl Addition

Assessment Roll and Tax List of Real Property in the Town of Pike Bay

Form 50 MILLER-DAVIS-GOV-MINNEAPOLIS

\* Indicate Type of Property: R-Residential, C-Commercial, I-Industrial, U-Utility, F-Farm, L-Lakeshore, T-Timber, M-Mineral

Table with columns: IN WHOSE NAME ASSESSED, SUBDIVISION, Sec. or Lot, Town or Block, No. of Acres of Land, No. School District, Indicate Homestead, Indicate Agricultural, Indicate Timber, TRUE AND FULL VALUATIONS, ASSESSED VALUATIONS (RURAL, ALL OTHER), TOTAL ASSESSED VALUE, Total Assessed Value as Equalized by the Board of Review, FINAL EQUALIZED VALUE.

Cass County, Minnesota, for Taxes for the Year 1962.

Table with columns: SOLD FOR TAXES, VALUATIONS BY SCHOOL DISTRICTS AS EQUALIZED BY DEPARTMENT OF TAXATION, Tax including State Homestead, State Tax on Non-Homestead, SPECIAL TAXES, TOTAL TAXES, PAID, WHEN PAID, Number of Receipt, March Settlement 1961, June Settlement 1961, Penalty, November Settlement 1961, Penalty, Collections to First Monday in January 1962, Delinquent on First Monday in January 1962, Total Delinquent Tax and Penalty, REMARKS.

Supplemental Plat Bug P-20-Me-Ming Beach Auditor's Plat # 3

Harding Jondahl Addition, Auditor's Plat # 3, Lattie Holt Look-Out

Assessment Roll and Tax List of Real Property in the Down of Pike Bay

Form 5C MILLER PAY CO. MINNEAPOLIS

\* Indicate Type of Property: R-Residential, C-Commercial, I-Industrial, U-Utility, F-Farm, L-Lakeshore, T-Timber, M-Mineral

Table with columns: IN WHOSE NAME ASSESSED, DESCRIPTION OF PROPERTY (Little Wolf Look-out, GOV'T LOT 7 & GOV'T LOT 6), TRUE AND FULL VALUATIONS, ASSESSED VALUATIONS (RURAL, ALL OTHER), and FINAL EQUALIZED VALUE.

NA

Table with columns: VALUATIONS BY SCHOOL DISTRICTS AS EQUALIZED BY DEPARTMENT OF TAXATION, SOLD FOR TAXES, SPECIAL TAXES, PAID, WHEN PAID, March Settlement, June Settlement, November Settlement, Delinquent on First Monday, Total Delinquent Tax and Penalty, REMARKS.

Assessment Roll and Tax List of Real Property in the Down of Pike Bay

Cass County, Minnesota, for Taxes for the Year 1962.

Highland Inn Subdivision  
Harding-Johdahl Addition  
Supplemental Plat # 5  
Little Wolf Look-Out

IN WHOSE NAME ASSESSED	DESCRIPTION OF PROPERTY				No. School District	Indicate Homestead Yes or No	Agri. or Rec. Yes or No	Indicate Type of Property	TRUE AND FULL VALUATIONS				ASSESSED VALUATIONS								FINAL EQUALIZED VALUE		
	SUBDIVISION	Sec. or Lot	Town or Block	Number of Acres of Land					LAND Exclusive of Structures and Improvements	BUILDINGS and Other Structures	MACHINERY Permanently Attached to Real Estate	TOTAL True and Full Value	RURAL			ALL OTHER						TOTAL ASSESSED VALUE	Total Assessed Value as Equalized by the Board of Review
													Homestead Up to \$4,000	Over \$4,000 and Non-Homestead	Timber Land Class 3e	Homestead Up to \$4,000	Over \$4,000 and Non-Homestead	MACHINERY Permanently Attached to Real Estate	Seasonal and Recreational Cabins				
Marcella Bergerson	1.28 acs of 89 acs in S.E. Cor	10	14531	Acres 100ths			R	300	2250	2550	510							510					
Ida J. Falk Jacobs		2					T	150		150		50						50					
		3					T	150		150		50						50					
		4					T	150		150		50						50					
		6						650	1500	2150	340	150						490					
								750	2250	3000	510							660					

SOLD FOR TAXES	VALUATIONS BY SCHOOL DISTRICTS AS EQUALIZED BY DEPARTMENT OF TAXATION						Tax Including State Homestead	State Tax on Non-Homestead	SPECIAL TAXES	SPECIAL TAXES	TOTAL TAXES	PAID	WHEN PAID	Number of Receipt	March Settlement 1963	June Settlement 1963	Penalty	November Settlement 1963	Penalty	Collections to First Monday in January 1964	Penalty	Delinquent on First Monday in January 1964	Total Delinquent Tax and Penalty	REMARKS
	District No.	District No.	District No.	District No.	District No.	District No.																		
	Rate	Rate	Rate	Rate	Rate	Rate																		
1																								
2																								
3																								
4																								
5																								
6																								
7																								
8																								
9																								
10																								
11																								
12																								
13																								
14																								
15																								
16																								
17																								
18																								
19																								
20																								

1962-63

Assessment Roll and Tax List of Real Property in the Town of Pike Bay

\* Indicate Type of Property: R-Residential, C-Commercial, I-Industrial, U-Utility, F-Farm, L-Lakeshore, T-Timber, M-Mineral

Form 5C MILLER-DAVIS CO., MINNEAPOLIS

DESCRIPTION OF PROPERTY				No. School District	Indicate Homestead Yes or No	Agricultural Yes or No	Indicate Type of Property	TRUE AND FULL VALUATIONS				ASSESSED VALUATIONS						Total Assessed Value as Equalized by the Board of Review	FINAL EQUALIZED VALUE			
SUBDIVISION	Sec. of Lot	Town or Block	Number of Acres of Land Acre 100ths					LAND Exclusive of Structures and Improvements	BUILDINGS and Other Structures	MACHINERY Permanently Attached to Real Estate	TOTAL True and Full Value	RURAL			ALL OTHER					TOTAL ASSESSED VALUE		
												Homestead Up to \$4,000 20%	Over \$4,000 and Non-Homestead 33 1/3%	Timber Land Class 3e 20%	Homestead Up to \$4,000 25%	Over \$4,000 and Non-Homestead 40%	MACHINERY Permanently Attached to Real Estate 33 1/3%				Seasonal and Recreational Cabins 33 1/3%	
																						Dollars

Cass County, Minnesota, for Taxes for the Year 1962.

SOLD FOR TAXES	VALUATIONS BY SCHOOL DISTRICTS AS EQUALIZED BY DEPARTMENT OF TAXATION						Tax Including State Homestead	State Tax on Non-Homestead	SPECIAL TAXES	SPECIAL TAXES	TOTAL TAXES	PAID	WHEN PAID	Number of Receipt	March Settlement 1961	June Settlement 1961	Penalty	November Settlement 1961	Penalty	Collections to First Monday in January 1962	Penalty	Delinquent on First Monday in January 1962	Total Delinquent Tax and Penalty	REMARKS
	District No.	District No.	District No.	District No.	District No.	District No.																		
	Rate	Rate	Rate	Rate	Rate	Rate																		
	Mills	Mills	Mills	Mills	Mills	Mills																		

Real Estate  
Ah Mung  
Highland Inn  
Subdivision  
Harding-Johnson  
Addition  
Bug P-Zo-We-Ni  
Auditor's  
Flat # 3  
Little Wolf  
Look-out

*Grand Total*      8,129.20      65,209.153004      218,213.20719      16,804.9143      730.8603      55,999.-30

*Less Dog*      - 40      - 90      - 90      - 30      - 30

*Total*      8,089.20      65,419.153004      218,123.20719      14,774.9143      730.8603      55,769.-30

107      76,969.210321      287,290.23741      24,149.12632      2,833.12      12,850.76205

127      76,899      287,240      24,119      - 12.617      2,846.413      12,850.76177

A. 11,160.58

77. 13,960.62

25,121.20

*Grand Total*      H 12782 H 23578 36360  
22496 17319 39815  
35278 40899 +76175

340.18      25,461.38

17508-30