

TAX LIST PAYABLE 1974
MOOSE LAKE

INDEX TO SECTIONS

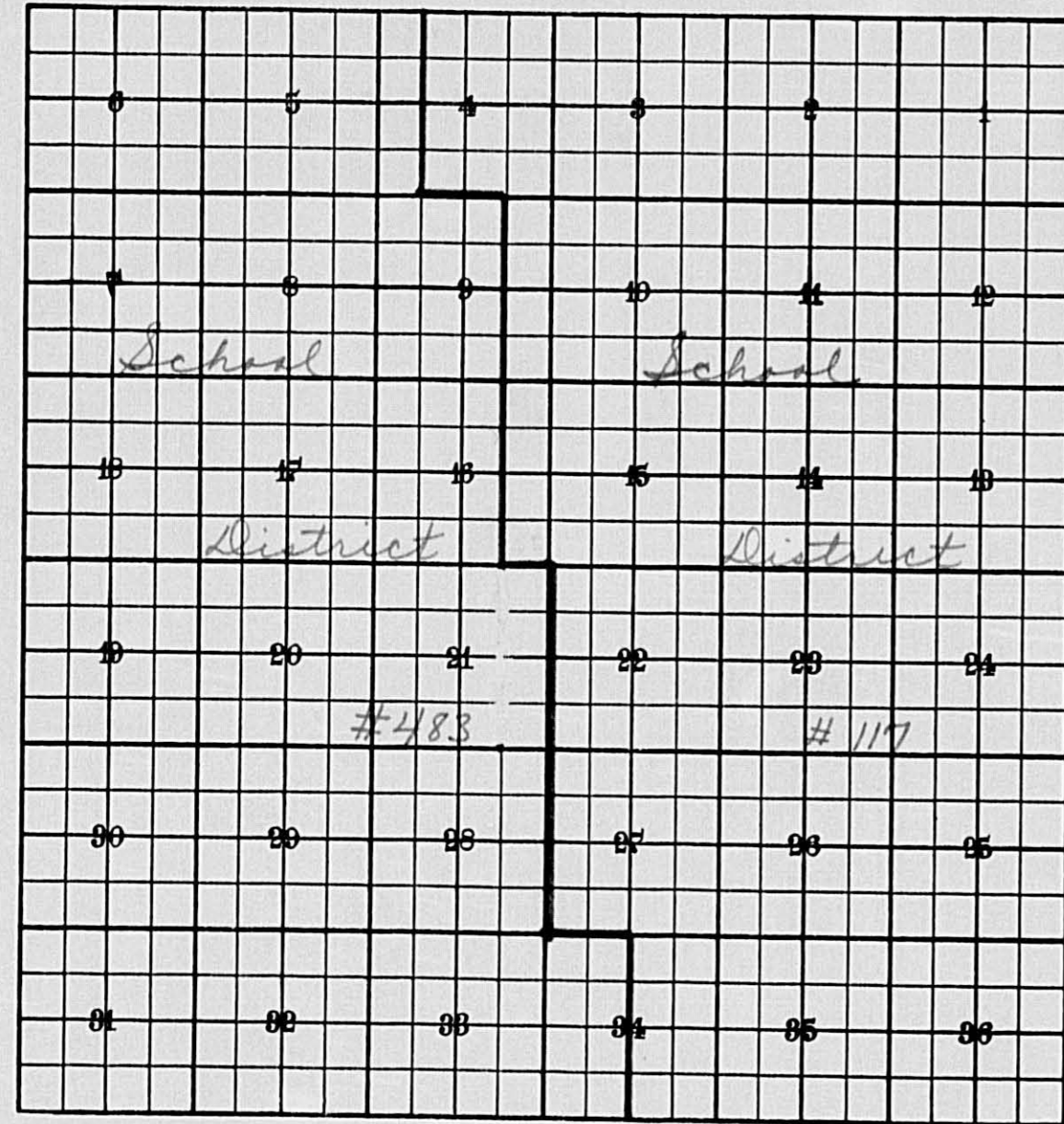
SECTION PAGE

Sec. 1	
" 2	
" 3	
" 4	
" 5	
" 6	
" 7	
" 8	
" 9	
" 10	
" 11	
" 12	
" 13	
" 14	
" 15	
" 16	
" 17	
" 18	
" 19	
" 20	
" 21	
" 22	
" 23	
" 24	
" 25	
" 26	
" 27	
" 28	
" 29	
" 30	
" 31	
" 32	
" 33	
" 34	
" 35	
" 36	

For Convenience of Auditor in Showing Boundaries of School Districts

Township No. 136 Range No. 31 Mer. P. M.

#269 became #483
8-19-68



SUMMARY OF TAX COLLECTION

Original Levy	- - - - -	\$ 6844.34	
Additions	- - - - -	\$ 15.98	
			\$ 6860.32
Abatements	- - - - -	\$	
			\$ 6860.32
<i>Replacement</i>			COLLECTIONS
March Settlement	- - - - -	\$ 61.09	
June Settlement	- - - - -	\$ 2,883.21	
November Settlement	- - - - -	\$ 1,511.96	
January Settlement	- - - - -	\$ 269.71	\$ 4,725.97
			\$ 6,217.13
Over Collected	- - - - -	\$	
Under Collected	- - - - -	\$	
Delinquent	- - - - -	\$ 643.19	\$
Total	- - - - -		\$ 6860.32

M. H 15.98

1491.16

Real Estate

COLLECTIONS OF TAXES PAYABLE IN 1974, Township Maase Lake OF Maase Lake, CASS COUNTY, MINNESOTA

FUNDS	MARCH SETTLEMENT 1974	JUNE SETTLEMENT 1974	NOV. SETTLEMENT 1974	Amount Collected from Nov. 1974 to First Monday in Jan. 1975	REDUCTIONS	Total Reductions and Collected	BALANCE UNCOLLECTED	ADDITIONS	Total Uncollected to First Monday in January, 1975
State-Non-Homestead, State-Homestead,									
County Revenue, County Road and Bridge, County Welfare, County Bond and Interest, Transportation P. E. R. A.	376 174 1062	19080 25045 53882	8769 11511 24764	1901 2496 5369					
Town Revenue, Town Road and Bridge, Bonds & Interest <i>Fire</i>	177 442 359	8964 22376 18224	4120 10284 8376	893 2230 1816					
School Special, Deficiency Bonds & Interest Tuition P. E. R. A. <i>C.O. Trans. Unempl. Ins.</i>	540 272 1954 313 105 15	27991 8362 88798 9194 6036 369	12587 8500 49694 9984 2115 492	3192 303 7835 259 677					
	6109	288321	151196	26971					

	SCHOOL DISTRICT NO.	LOCAL 1 MILL	SPECIAL	STATE LOAN	<i>Deficiency</i>	<i>B.O.</i>	<i>C.O.</i>	<i>Trans.</i>	<i>Unempl. Ins.</i>	TOTALS
MARCH SETTLEMENT	School District No, <i>483A</i>		253		240	1131	286	33	15	1958
	<i>117A</i>		287		32	823	27	72		1241
	Totals		540		272	1954	313	105	15	3199
	School District No, <i>117A</i>		20588		2274	58970	1952	5092		88876
JUNE SETTLEMENT	<i>11771A</i>		912		50	1307	43	112		2424
	<i>483A</i>		6279		5938	28048	7080	818	363	48526
	<i>48371A</i>		212		100	473	119	14	06	924
	Totals		27991		8362	88798	9194	6036	369	140750
NOVEMBER SETTLEMENT	School District No, <i>483A</i>		8512		8050	38023	9598	1107	492	65782
	<i>117A</i>		4075		450	11671	386	1008		17590
	Totals		12587		8500	49694	9984	2115	492	83372
NOVEMBER to JANUARY	School District No, <i>117A</i>		2279		252	6528	216	565		9840
	<i>11771A</i>		913		57	1307	43	112		2426
	Totals		3192		303	7835	259	677		12266
ADDITIONS	School District No,									
Totals										
REDUCTIONS	School District No,									
Totals										

Real Estate

1973 Tax List of Real Property in the Township of Moose Lake

Cass County, Minnesota, for Taxes Payable in the Year 1974.

Main tax list table with columns for Assessed Value, Valuations by School Districts, Non-Homestead General Tax, Homestead General Tax, 45% Homestead Credit, Rate & Tax Bonds & Int., Special Taxes, Total Taxes, Paid, When Paid, Number of Receipt, March Settlement, June Settlement, Penalty, November Settlement, Penalties, Delinquent on First Monday in January 1975, Total Delinquent Tax and Penalty, and Remarks.

179 1233 1402

A 117 11324

11324

3369

7956

Table with columns: IN WHOSE NAME ASSESSED, SUBDIVISION, Assessed Value, Valuations by School Districts, Taxes (Non-Homestead, Homestead, 45% Homestead Credit, Rate & Tax Bonds, Special, Total), PAID, WHEN PAID, Number of Receipt, Settlements (March, June, November, Penalty), Collections, Delinquent, Total Delinquent Tax and Penalty, REMARKS.

511 14490 3366 1326 3366

H 980 H 1366 1070 3866

H 117 16150 11030 4964

22314

15424

6792

444 506 4713 404 461 4910 5597 1034 1179

FORM 80 MILLER-DAVIS CO., MINNEAPOLIS

IN WHOSE NAME ASSESSED	DESCRIPTION OF PROPERTY					ESTIMATED MARKET VALUE	ASSESSED VALUE				SOLD FOR TAXES	VALUATIONS BY SCHOOL DISTRICTS AS EQUALIZED BY DEPARTMENT OF TAXATION						Non-Homestead General Tax Ex. Bonds	Homestead General Tax Ex. Bonds	45% Homestead Credit	Rate & Tax Bonds & Int. (Mills) Co. Sch. Vill. Tot.	SPECIAL TAXES	SPECIAL TAXES	TOTAL TAXES	PAID	WHEN PAID	Number of Receipt	March Settlement 1974	June Settlement 1974	Penalty	November Settlement 1974	Penalty	Collections to First Monday in January 1975	Penalty	Delinquent on First Monday in January 1975	Total Delinquent Tax and Penalty	REMARKS																													
	SUBDIVISION	Sec. or Lot	Town or Block	Rsq.	No. of Acres		No. School Districts	Type of Property	Total	Homestead Tax Credit		Agr.	Non Agr.	District No. 117	District No. 117	District No. 117	District No. 117																					District No. 117	District No. 117	Dollars	Dollars	Dollars	Dollars	Dollars	Dollars	Dollars	Dollars	Dollars	Dollars	Dollars	Dollars	Dollars	Dollars	Dollars	Dollars	Dollars										
																																																									Dollars	Dollars	Dollars	Dollars	Dollars	Dollars	Dollars	Dollars	Dollars	Dollars
																																																									Dollars	Dollars	Dollars	Dollars	Dollars	Dollars	Dollars	Dollars	Dollars	Dollars
4361 State of Minnesota 1	Gov. Lot 1	4	136	31	117																																																													
4361 State of Minnesota 2	Gov. Lot 2	4	136	31	117																																																													
4361 State of Minnesota 3	SW 1/4 of NE 1/4	4	136	31	117																																																													
4361 State of Minnesota 4	SE 1/4 of NE 1/4	4	136	31	117																																																													
4361 Marion F. Neumann 5	Gov. Lot 3	4	136	31	41	117																																																												
4361 State of Minnesota 6	Gov. Lot 4	4	136	31	483	N F	1467	489		489																																																								
4361 State of Minnesota 7	SW 1/4 of NW 1/4	4	136	31	483																																																													
4361 Marion F. Neumann 8	SE 1/4 of NW 1/4	4	136	31	40	117																																																												
4361 Marion F. Neumann 9	NE 1/4 of SW 1/4	4	136	31	40	117	N F	852	284	284																																																								
4361 State of Minnesota 10	NW 1/4 of SW 1/4	4	136	31	483	N F	837	279		279																																																								
4361 State of Minnesota 11	SW 1/4 of SW 1/4	4	136	31	483																																																													
4361 State of Minnesota 12	SE 1/4 of SW 1/4	4	136	31	117																																																													
4361 State of Minnesota 13	NE 1/4 of SE 1/4	4	136	31	117																																																													
4361 Maurice E. Davis & Hazel F. Davis 15	SW 1/4 of SE 1/4	4	136	31	40	117	Y F	896	178	178	178	H	178																																																					
4361 Maurice E. Davis & Hazel F. Davis 16	SE 1/4 of SE 1/4	4	136	31	40	117	Y F	755	151	151		H	151																																																					
					201		4801	1381	178	1381	H 151	H 178	1052																																																					
												R 117	9714	1438	648																																																			

2nd HALF PAID OCT 28 1974
1st HALF PAID MAY 24 1974

2nd HALF PAID OCT 28 1974
1st HALF PAID MAY 24 1974

2nd HALF PAID OCT 28 1974
1st HALF PAID MAY 24 1974

PAID IN FULL MAY 31 1974

PAID IN FULL MAY 31 1974

19814
6108

790
1230

6257

4718 - 19959

4718 -

4718 -

4719

4247

FORM 80 MILLER-DAVIS CO., MINNEAPOLIS

Table with columns: IN WHOSE NAME ASSESSED, DESCRIPTION OF PROPERTY, ASSESSED VALUE, VALUATIONS BY SCHOOL DISTRICTS AS EQUALIZED BY DEPARTMENT OF TAXATION, Non-Homestead General Tax, Homestead General Tax, 45% Homestead Credit, Rate & Tax Bonds & Int., SPECIAL TAXES, SPECIAL TAXES, TOTAL TAXES, PAID, WHEN PAID, Number of Receipt, March Settlement 1974, June Settlement 1974, Penalty, November Settlement 1974, Penalty, Collections to First Monday in January 1975, Penalty, Delinquent on First Monday in January 1975, Total Delinquent Tax and Penalty, REMARKS.

510 30493 5231 3904 5231

H3904 1327 5231

A483 14456 42526 19136

37846

14549

23297

2nd HALF PAID OCT 31 1974 20996
1st HALF PAID MAY 31 1974 14616
2nd HALF PAID OCT 31 1974 20996
1st HALF PAID MAY 31 1974 14616
2nd HALF PAID OCT 31 1974 20996
1st HALF PAID MAY 31 1974 14616
2nd HALF PAID OCT 30 1974
1st HALF PAID MAY 20 1974
2nd HALF PAID OCT 30 1974
1st HALF PAID MAY 20 1974
2nd HALF PAID OCT 30 1974
1st HALF PAID MAY 20 1974
2nd HALF PAID OCT 30 1974
1st HALF PAID MAY 20 1974

20996
20652
850
939
959

4720 - 19960
"
"
4721 - 19961
"
"
4721 - 19961
"
"
"

FORM 80 MILLER-DAVIS CO., MINNEAPOLIS

IN WHOSE NAME ASSESSED	DESCRIPTION OF PROPERTY						ASSESSED VALUE				SOLD FOR TAXES	VALUATIONS BY SCHOOL DISTRICTS AS EQUALIZED BY DEPARTMENT OF TAXATION						
	SUBDIVISION	Sec. or Lot	Town or Block	Rng.	No. of Acres	No. School District	ESTIMATED MARKET VALUE	Total	Homestead Tax Credit	Agr.		Non Agr.	District No. 9117	District No. NR117	District No.	District No.	District No.	District No.
													Mills	Mills	Mills	Mills	Mills	Mills
10361 Richard & Alice Roubal 1	NE 1/4 of NE 1/4	10	136	31	40	117												
10361 Richard & Alice Roubal 2	NW 1/4 of NE 1/4	10	136	31	40	117	7880	1576	1576	1576		H 1576						
10361 Richard & Alice Roubal 3	SW 1/4 of NE 1/4	10	136	31	40	117	1335	267	267	267		H 267						
10361 Richard & Alice Roubal 4	SE 1/4 of NE 1/4	10	136	31	40	117	525	105	105			H 105						
							495	99	99			H 99						
10361 Maurice E. & Hazel F. Davis 5	NE 1/4 of NW 1/4	10	136	31	40	117												
10361 Maurice E. & Hazel F. Davis 6	NW 1/4 of NW 1/4	10	136	31	40	117	1335	267	267	267		H 267						
10361 State of Minnesota 7	SW 1/4 of NW 1/4	10	136	31		117	3500	700	700	700		H 700						
10361 Maurice E. Sr. & Hazel Davis 8	SE 1/4 of NW 1/4 less SE 1/4	10	136	31	40	117												
10361 Maurice, Jr. & Dolores Davis 8.01	SE 1/4 of SE 1/4 of NW 1/4	10	136	31		117	7716	1929	1929	1929		H 1929						
							248	62	62	62		H 62						
10361 State of Minnesota 9	Gov. Lot 2	10	136	31		117												
10361 State of Minnesota 10	NW 1/4 of SW 1/4	10	136	31		117												
10361 State of Minnesota 11	Gov. Lot 3	10	136	31		117												
10361 State of Minnesota 13	NE 1/4 of SE 1/4	10	136	31		117												
10361 State of Minnesota 14	NW 1/4 of SE 1/4	10	136	31		117												
10361 State of Minnesota 15	Gov. Lot 1	10	136	31		117												
10361 State of Minnesota 16	SE 1/4 of SE 1/4	10	136	31		117												

280 23034 5005 4801 3014 1991
 H 204 H 204
 H 2810 H 1991 H 4801
 3014 1991 5005

	Non-Homestead General Tax Ex. Bonds	Homestead General Tax Ex. Bonds	45% Homestead Credit	Rate & Tax Bonds & Int. (Mills)	SPECIAL TAXES	SPECIAL TAXES	TOTAL TAXES	PAID	WHEN PAID	Number of Receipt	March Settlement 1974	June Settlement 1974	Penalty	November Settlement 1974	Penalty	Collections to First Monday in January 1975	Penalty	Delinquent on First Monday in January 1975	Total Delinquent Tax and Penalty	REMARKS	
																					\$ cts
1		12724	5726				6998	.1	PAID IN FULL	MAY 31 1974										4722	
2		2156	970				1186	.2	PAID IN FULL	MAY 31 1974											
3	848						848	.3	PAID IN FULL	MAY 31 1974											
4	800						800	.4	PAID IN FULL	MAY 31 1974											
5																					
6		2156	970				1186	.6	PAID IN FULL	MAY 31 1974	10910		1186								4719
7		5652	2544				3108	.7	PAID IN FULL	MAY 31 1974	10910		3108								
8																					
9		17184	7732				9452	.9	2nd HALF PAID	NOV 25 1974	21060										
									1st HALF PAID	MAY 31 1974	12287										4726
10		552	248				304	.10	2nd HALF PAID	NOV 25 1974	21060										4724 - 19902
									1st HALF PAID	MAY 31 1974	12287										
11																					
12																					
13																					
14																					
15																					
16																					
17																					
18																					
19																					
20																					

2117 1648 22688
 NR117 17736
 1648 40424 18190
 23882
 19804
 4878

FORM 30 MILLER-DAVIS CO., MINNEAPOLIS

IN WHOSE NAME ASSESSED	DESCRIPTION OF PROPERTY					ESTIMATED MARKET VALUE Dollars	ASSESSED VALUE				HOLD FOR TAXES	VALUATIONS BY SCHOOL DISTRICTS AS EQUALIZED BY DEPARTMENT OF TAXATION						Non-Homestead General Tax Ex. Bonds	Homestead General Tax Ex. Bonds	45% Homestead Credit	Rate & Tax Bonds & Int. (Mills) Co. Sch. Vill. Tot.	SPECIAL TAXES	SPECIAL TAXES	TOTAL TAXES	PAID	WHEN PAID	Number of Receipt	March Settlement 1974	June Settlement 1974	Penalty	November Settlement 1974	Penalty	Collections to First Monday in January 1975	Penalty	Delinquent on First Monday in January 1975	Total Delinquent Tax and Penalty	REMARKS																		
	SUBDIVISION	Sec. or Lot	Town or Block	Rag.	No. of Acres		No. School District	No. Homestead	No. Non-Agr.	Dollars		Dollars	Dollars	Dollars	Dollars	Dollars	Dollars																					Dollars	Dollars	Dollars	Dollars	Dollars	Dollars	Dollars	Dollars	Dollars	Dollars	Dollars	Dollars	Dollars	Dollars	Dollars	Dollars	Dollars	Dollars
14361 Morris S.Skow	1	NE 1/4 of NE 1/4	14 136 31 40	117	N F	618	206	206			206					1	1664	1664	1	PAID IN FULL	MAY 31 1974			1664							4725																								
14361 Morris S.Skow	2	NW 1/4 of NE 1/4	14 136 31 40	117	N F	306	102	102			102					2	824	824	2	PAID IN FULL	MAY 31 1974	9911		824							"																								
14361 Morris S.Skow	3	SW 1/4 of NE 1/4	14 136 31 40	117	N F	3765	1255	1255			1255					3	10132	10132	3	PAID IN FULL	MAY 31 1974			10132							"																								
14361 Morris S.Skow	4	SE 1/4 of NE 1/4	14 136 31 40	117	N F	282	94	94			94					4	760	760	4	PAID IN FULL	MAY 31 1974			760							"																								
14361 Eldon L.& Shirley I. Wioso	5	NE 1/4 of NW 1/4	14 136 31 40	117	N F	264	88	88			88					5	710	710	5																																				
14361 Eldon L.& Shirley I. Wioso	6	NW 1/4 of NW 1/4	14 136 31 40	117	N F	456	152	152			152					6	1228	1228	6	PAID IN FULL	MAY 31 1974										4728																								
14361 Eldon L.& Shirley I. Wioso	7	SW 1/4 of NW 1/4	14 136 31 40	117	N F	174	58	58			58					7	452	452	7	PAID IN FULL	MAY 31 1974										"																								
14361 Eldon L.& Shirley I. Wioso	8	SE 1/4 of NW 1/4	14 136 31 40	117	N F	942	314	314			314					8	2536	2536	8	PAID IN FULL	MAY 31 1974	9912		4926							"																								
14361 Eldon L.& Shirley I. Wioso	9	NE 1/4 of SW 1/4	14 136 31 40	117	N F	675	225	225			225					9	1816	1816	9	PAID IN FULL	MAY 31 1974										4728																								
14361 Eldon L.& Shirley I. Wioso	10	NW 1/4 of SW 1/4	14 136 31 40	117	N F	315	105	105			105					10	848	848	10	PAID IN FULL	MAY 31 1974					7218					"																								
14361 Eldon L.& Shirley I. Wioso	11	SW 1/4 of SW 1/4	14 136 31 40	117	N F	678	226	226			226					11	1824	1824	11	PAID IN FULL	MAY 31 1974										"																								
14361 Eldon L.& Shirley I. Wioso	12	SE 1/4 of SW 1/4	14 136 31 40	117	N F	1014	338	338			338					12	2730	2730	12	PAID IN FULL	MAY 31 1974										"																								
14361 State of Minnesota	13	NE 1/4 of SE 1/4	14 136 31	117												13			13																																				
14361 Morris S.Skow	14	NW 1/4 of SE 1/4	14 136 31 40	117	N F	867	289	289			289					14	2334	2334	14	PAID IN FULL	MAY 31 1974	9911		2334						4725																									
14361 Eldon L.& Shirley I. Wioso	15	SW 1/4 of SE 1/4	14 136 31 40	117	N F	8082	2694	2694			2694					15	21752	21752	15	PAID IN FULL	MAY 31 1974	9912		22872						4728																									
14361 Eldon L.& Shirley I. Wioso	16	SE 1/4 of SE 1/4	14 136 31 40	117	N F	312	104	104			104					16	840	840	16	PAID IN FULL	MAY 31 1974										"																								
	20															20			20																																				
				600		18150	6250	6250			6250					R117	50450	50450							50450																														

FORM 86 MILLER-DAVIS CO., MINNEAPOLIS

IN WHOSE NAME ASSESSED	DESCRIPTION OF PROPERTY				ESTIMATED MARKET VALUE	ASSESSED VALUE				SOLD FOR TAXES	VALUATIONS BY SCHOOL DISTRICTS AS EQUALIZED BY DEPARTMENT OF TAXATION						Non-Homestead General Tax Ex. Bonds	Homestead General Tax Ex. Bonds	45% Homestead Credit	Rate & Tax Bonds & Int. (Mills)	SPECIAL TAXES	SPECIAL TAXES	TOTAL TAXES	PAID	WHEN PAID	Number of Receipt	March Settlement 1974	June Settlement 1974	Penalty	November Settlement 1974	Penalty	Collections to First Monday in January 1975	Penalty	Delinquent on First Monday in January 1975	Total Delinquent Tax and Penalty	REMARKS
	SUBDIVISION	Sec. or Lot	Town or Block	Rng.		No. of Acres	Total	Homestead Tax Credit	Agr.		Non Agr.	District No. 117	District No.	District No.	District No.	District No.																				
15361 State of Minnesota	1	NE 1/4 of NE 1/4	15	136	31																															
15361 State of Minnesota	2	NW 1/4 of NE 1/4	15	136	31																															
15361 State of Minnesota	3	SW 1/4 of NE 1/4	15	136	31																															
15361 State of Minnesota	4	SE 1/4 of NE 1/4	15	136	31																															
15361 Henry H. Bokelman	5	Gov. Lot 1	15	136	31	28																														
15361 Henry H. Bokelman	6	Gov. Lot 4	15	136	31	28																														
15361 Henry H. Bokelman	7	Gov. Lot 2	15	136	31	40																														
15361 Henry H. Bokelman	8	Gov. Lot 2	15	136	31	40																														
15361 Henry H. Bokelman	9	Gov. Lot 2	15	136	31	40																														
15361 Volney & Margaret Olson	11	Gov. Lot 3	15	136	31	39																														
15361 Volney R. & Margaret Olson	12	SW 1/4 of SW 1/4	15	136	31	40																														
15361 Henry H. Bokelman	13	SE 1/4 of SW 1/4	15	136	31	40																														
15361 Henry H. Bokelman	14	SE 1/4 of SW 1/4	15	136	31	40																														
15361 State of Minnesota	16	NE 1/4 of SE 1/4	13	136	31																															
15361 State of Minnesota	17	NW 1/4 of SE 1/4	15	136	31																															
15361 Henry H. Bokelman	18	SW 1/4 of SE 1/4	15	136	31	40																														
15361 Henry H. Bokelman	19	SE 1/4 of SE 1/4	15	136	31	40																														
15361 Henry H. Bokelman	20	SE 1/4 of SE 1/4	15	136	31	40																														

PAID IN FULL MAY 22 1974
 PAID IN FULL MAY 22 1974
 PAID IN FULL MAY 22 1974

PAID IN FULL MAY 22 1974
 2ND HALF PAID OCT 31 1974
 1ST HALF PAID MAR 1 1974
 2ND HALF PAID OCT 31 1974
 1ST HALF PAID MAR 1 1974

PAID IN FULL MAY 22 1974
 PAID IN FULL MAY 22 1974

84
 # 88
 # 96
 # 117
 8478 710 320 8868
 534 7800 534

FORM MC MILLER-DAVIS CO., MINNEAPOLIS

IN WHOSE NAME ASSESSED	DESCRIPTION OF PROPERTY						ESTIMATED MARKET VALUE	ASSESSED VALUE				SOLD FOR TAXES	VALUATIONS BY SCHOOL DISTRICTS AS EQUALIZED BY DEPARTMENT OF TAXATION						Non-Homestead General Tax Ex. Bonds	Homestead General Tax Ex. Bonds	45% Homestead Credit	Rate & Tax Bonds & Int. (Mills)	SPECIAL TAXES	SPECIAL TAXES	TOTAL TAXES	PAID	WHEN PAID	Number of Receipts	March Settlement 1974	June Settlement 1974	Penalty	November Settlement 1974	Penalty	Collections to First Monday in January 1975	Penalty	Delinquent on First Monday in January 1975	Total Delinquent Tax and Penalty	REMARKS	
	SUBDIVISION	Sec. or Lot	Town or Block	Rag.	No. of Acres	No. School District		Municipality	Total	Homestead Tax Credit	Agr.		Non Agr.	District No. 108.93	District No.	District No.	District No.	District No.																					District No.
														Mills	Mills	Mills	Mills	Mills																					Mills
														Dollars	Dollars	Dollars	Dollars	Dollars																					Dollars
20361 State of Minnesota	1	NE 1/4 of NE 1/4	20	136	31	483																																	
20361 State of Minnesota	2	NW 1/4 of NE 1/4	20	136	31	483																																	
20361 State of Minnesota	3	SW 1/4 of NE 1/4	20	136	31	483																																	
20361 State of Minnesota	4	SE 1/4 of NE 1/4	20	136	31	483																																	
20361 State of Minnesota	5																																						
20361 State of Minnesota	6	NE 1/4 of NW 1/4	20	136	31	483																																	
20361 State of Minnesota	7	NW 1/4 of NW 1/4	20	136	31	483																																	
20361 Jack V. & Ruth E. Wells	8	SW 1/4 of NW 1/4	20	136	31	40	483																																
20361 State of Minnesota	9	SE 1/4 of NW 1/4	20	136	31	483																																	
20361 State of Minnesota	10																																						
20361 State of Minnesota	11	NE 1/4 of SW 1/4	20	136	31	483																																	
20361 Jack V. & Ruth E. Wells	12	NW 1/4 of SW 1/4	20	136	31	40	483																																
20361 Jack V. & Ruth E. Wells	13	SW 1/4 of SW 1/4	20	136	31	40	483																																
20361 Jack V. & Ruth E. Wells	14	SE 1/4 of SW 1/4	20	136	31	40	483																																
20361 State of Minnesota	15																																						
20361 State of Minnesota	16	NE 1/4 of SE 1/4	20	136	31	483																																	
20361 State of Minnesota	17	NW 1/4 of SE 1/4	20	136	31	483																																	
20361 Jack V. & Ruth E. Wells	18	SW 1/4 of SE 1/4	20	136	31	40	483																																
20361 Jack V. & Ruth E. Wells	19	SE 1/4 of SE 1/4	20	136	31	40	483																																
	20																																						

1154
 1269
 4737
 750
 825
 4737
 544
 598
 1228
 1351
 4737
 2870
 53157
 860
 946
 7406

H 235
 H 809
 1044

A483 2558 8814 3966
 7406

FORM 80 MILLER-DAVIS CO., MINNEAPOLIS

IN WHOSE NAME ASSESSED

DESCRIPTION OF PROPERTY

ASSESSED VALUE

VALUATIONS BY SCHOOL DISTRICTS AS EQUALIZED BY DEPARTMENT OF TAXATION

Main data table with columns for property description, assessed value, school district valuations, taxes, and payment status. Includes handwritten notes and totals at the bottom.

Handwritten notes: Eldon L. & Shirley Wieso, Peter A. Jewell

Handwritten totals: 399, 3901, 2193, 1490, 2193

Handwritten totals: 471, 1490, 633, 2193

Handwritten totals: R117, 5676, 12032, 5416

Handwritten total: 12292

Handwritten total: 3996

Handwritten total: 4656

Handwritten total: 3640

Handwritten total: 1106 1217 4740

Handwritten total: 422

Handwritten total: 3640

Handwritten total: 2534 2781 4740

Handwritten total: 841

Handwritten total: 1526

Handwritten total: 388

Handwritten total: 186

Handwritten total: 492

Handwritten total: 968

Handwritten total: 992

Handwritten total: 991

Handwritten total: 492

Handwritten total: 768

Handwritten total: 346

Handwritten total: 422

Handwritten total: 2994

Handwritten total: 2534

Handwritten total: 2076

Handwritten total: 4656

Handwritten total: 2076

Handwritten total: 1106

Handwritten total: 768

Handwritten total: 346

Handwritten total: 422

Handwritten total: 2994

Handwritten total: 2534

Handwritten total: 2076

Handwritten total: 4656

Handwritten total: 2076

REMARKS

FORM 86 MILLER-DAVIS CO., MINNEAPOLIS

Table with columns: IN WHOSE NAME ASSSESSED, DESCRIPTION OF PROPERTY, ASSESSED VALUE, VALUATIONS BY SCHOOL DISTRICTS AS EQUALIZED BY DEPARTMENT OF TAXATION, Non-Homestead General Tax, Homestead General Tax, 45% Homestead Credit, Rate & Tax Bonds & Int. (Mills), SPECIAL TAXES, SPECIAL TAXES, TOTAL TAXES, PAID, WHEN PAID, Number of Receipt, March Settlement 1974, June Settlement 1974, Penalty, November Settlement 1974, Penalty, Collections to First Monday in January 1975, Penalty, Delinquent on First Monday in January 1975, Total Delinquent Tax and Penalty, REMARKS.

640

13128 3576 1129 3576

H 71 H 1129 2376 3576

8117 19760 9116 4104

24772

15179

9593

4747

4746

4746

4746

FORM 86 MILLER-DAVIS CO., MINNEAPOLIS

Table with columns: IN WHOSE NAME ASSESSED, DESCRIPTION OF PROPERTY, ASSESSED VALUE, VALUATIONS BY SCHOOL DISTRICTS AS EQUALIZED BY DEPARTMENT OF TAXATION, Non-Homestead General Tax, Homestead General Tax, 45% Homestead Credit, Rate & Tax Bonds & Int., SPECIAL TAXES, SPECIAL TAXES, TOTAL TAXES, PAID, WHEN PAID, Number of Receipt, March Settlement 1974, June Settlement 1974, Penalty, November Settlement 1974, Penalty, Collections to First Monday in January 1975, Penalty, Delinquent on First Monday in January 1975, Total Delinquent Tax and Penalty, REMARKS.

200

3856 664 403 664

29
403
232
664

A117 2108 3254 1464

3898

3898

PAID IN FULL MAY 3 1974
PAID IN FULL MAY 3 1974
PAID IN FULL MAY 3 1974

4757

"

"

4758

4758

FORM 8C MILLER-DAVIS CO., MINNEAPOLIS

Main tax list table with columns: IN WHOSE NAME ADDRESSED, DESCRIPTION OF PROPERTY, ASSESSED VALUE, VALUATIONS BY SCHOOL DISTRICTS AS EQUALIZED BY DEPARTMENT OF TAXATION, SPECIAL TAXES, TOTAL TAXES, PAID, WHEN PAID, etc.

590 15706 4604 785 11644 162 785 4604

488 41600 8554 3850 46304

5194 39836

1274

FORM NO. MILLER-DAVIS CO., MINNEAPOLIS

IN WHOSE NAME ASSESSED	SUBDIVISION	Sec. or Lot	Town or Block	Rdg.	No. of Acres	No. School District	Indicates Homestead Yes or No	Indicates Type of Property	ASSESSED VALUE					SOLD FOR TAXES	VALUATIONS BY SCHOOL DISTRICTS AS EQUALIZED BY DEPARTMENT OF TAXATION						Non-Homestead General Tax Ex. Bonds	Homestead General Tax Ex. Bonds	45% Homestead Credit	Rate & Tax Bonds & Int. (Mills)	SPECIAL TAXES	SPECIAL TAXES	TOTAL TAXES	PAID	WHEN PAID	Number of Receipt	March Settlement 1974	June Settlement 1974	Penalty	November Settlement 1974	Penalty	Collections to First Monday in January 1975	Penalty	Delinquent on First Monday in January 1975	Total Delinquent Tax and Penalty	REMARKS				
									ESTIMATED MARKET VALUE	Total	Homestead Tax Credit	Agr.	Non Agr.		District No. 108.93	District No. Mills	District No. Mills	District No. Mills	District No. Mills	District No. Mills																					District No. Mills			
									Dollars	Dollars	Dollars	Dollars	Dollars		Dollars	Dollars	Dollars	Dollars	Dollars	Dollars																					Dollars			
27361 Donald P.Road & Richard P.Road	1				40	483																																						
27361 Donald P.Road & Richard P.Road	2				40	483	N	F	495	165				165						1798					1798	1	PAID IN FULL	MAY 14 1974											4763					
27361 State of Minnesota	3					483	N	F	429	143				143						1558					1558	2	PAID IN FULL	MAY 14 1974											4					
27361 State of Minnesota	4					483																																						
27361 State of Minnesota	5					483																																						
27361 State of Minnesota (Cont. to David A.Heath)	6					483	N	F	576	192			SOLD FOR TAXES	192						2092					2092	7	PAID IN FULL	JAN 29 1974	132	2092										4762				
27361 State of Minnesota	7					483																																						
27361 State of Minnesota	8					483																																						
27361 State of Minnesota	9					483																																						
27361 State of Minnesota	10					483																																						
27361 State of Minnesota	11					483																																						
27361 State of Minnesota	12					483																																						
27361 State of Minnesota	13					483																																						
27361 State of Minnesota	14					483																																						
27361 State of Minnesota	15					483																																						
27361 State of Minnesota	16					483																																						
27361 State of Minnesota	17					483																																						
27361 State of Minnesota	18					483																																						
27361 State of Minnesota	19					483																																						
27361 State of Minnesota	20					483																																						

80

1500 500 500 500

2483 5448

5448

2092 3356

FORM MC MILLER-DAVIS CO., MINNEAPOLIS

Table with columns: IN WHOSE NAME ASSESSED, DESCRIPTION OF PROPERTY, ASSESSED VALUE, VALUATIONS BY SCHOOL DISTRICTS AS EQUALIZED BY DEPARTMENT OF TAXATION, SOLD FOR TAXES, and REMARKS. Includes handwritten entries for property 30361.

Handwritten summary calculations at the bottom of the table, including totals for assessed values and school district valuations.

Table with columns: Non-Homestead General Tax, Homestead General Tax, 45% Homestead Credit, Rate & Tax Bonds & Int., SPECIAL TAXES, TOTAL TAXES, PAID, WHEN PAID, Number of Receipt, March Settlement, June Settlement, Penalty, November Settlement, Penalty, Collections to First Monday in January, Delinquent on First Monday in January, Total Delinquent Tax and Penalty, and REMARKS. Includes handwritten entries for property 19483.

Handwritten summary calculations at the bottom of the table, including totals for taxes payable and delinquent amounts.

FORM 86 MILLER-DAVIS CO., MINNEAPOLIS

IN WHOSE NAME ASSESSED	DESCRIPTION OF PROPERTY						ESTIMATED MARKET VALUE	ASSESSED VALUE				SOLD FOR TAXES	VALUATIONS BY SCHOOL DISTRICTS AS EQUALIZED BY DEPARTMENT OF TAXATION						Non-Homestead General Tax Exc. Bonds	Homestead General Tax Exc. Bonds	45% Homestead Credit	Rate & Tax Bonds & Int. (Mills)	SPECIAL TAXES	SPECIAL TAXES	TOTAL TAXES	PAID	WHEN PAID	Number of Receipt	March Settlement 1974	June Settlement 1974	Penalty	November Settlement 1974	Penalty	Collection to First Monday in January 1975	Penalty	Delinquent on First Monday in January 1975	Total Delinquent Tax and Penalty	REMARKS																
	SUBDIVISION	Sec. or Lot	Town or Block	Rng.	No. of Acres	N. School District		Type of Property	Total	Homestead Tax Credit	Agr.		Non Agr.	District No. 10893 Mills	District No. Mills	District No. Mills	District No. Mills	District No. Mills																					District No. Mills	0 cts	0 cts	0 cts	0 cts	0 cts	0 cts	0 cts	0 cts	0 cts	0 cts	0 cts	0 cts	0 cts	0 cts	0 cts
30361 Alvin A. & Maurine G. McAllister 9	1	Gov. Lot 9	30	136	31	40	493	N F	945	315	315																																											
30361 State of Minnesota 10	2	Gov. Lot 10	30	136	31	493																															4765 - 1973																	
30361 Jimmie A. & Rose Marie Gaines 10 (C. Line)	3	Gov. Lot 12 less Hwy.	30	136	31	32	493	N F	159	53	53																																											
30361 Alvin A. & Maurine G. McAllister 11	4	Gov. Lot 15	30	136	31	40	493	N F	291	97	97																																											
30361 Herman & Elizabeth Schoid 11 (C. Line)	6	Gov. Lot 13	30	136	31	32	493	Y F	8305	1661	1661	1661																																										
30361 Herman & Elizabeth Schoid 11 (C. Line)	7	Gov. Lot 14	30	136	31	40	493	Y F	1115	223	223	223																																										
30361 Alvin A. & Maurine G. McAllister 12	8	Gov. Lot 16	30	136	31	40	493	N F	717	239	239	239																																										
30361 Lena & Amund Johnson (Cont. to 13 Alvin & Maurine McAllister)	11	NE 1/4 of SE 1/4	30	136	31	40	493	N F	543	181	181																																											
30361 Alvin A. & Maurine G. McAllister 14	12	NW 1/4 of SE 1/4	30	136	31	40	493	N F	705	235	235	235																										4765 - 1973																
30361 Alvin R. & Maurine G. McAllister 15	13	SW 1/4 of SE 1/4	30	136	31	40	493	N F	528	176	176																																											
30361 Lena & Amund Johnson (Cont. to 16 Alvin & Maurine McAllister)	14	SE 1/4 of SE 1/4	30	136	31	40	493	N F	222	74	74																																											
	15																																																					
	16																																																					
	17																																																					
	18																																																					
	19																																																					
	20																																																					

H 2358
 876
 3254
 R483 9762 25688 11560
 23890
 11656
 12234

Table with columns: IN WHOSE NAME ADDRESSED, DESCRIPTION OF PROPERTY, ASSESSED VALUE, VALUATIONS BY SCHOOL DISTRICTS AS EQUALIZED BY DEPARTMENT OF TAXATION, Non-Homestead General Tax Ex. Bonds, Homestead General Tax Ex. Bonds, 45% Homestead Credit, Rate & Tax Bonds & Int. (Mills), SPECIAL TAXES, SPECIAL TAXES, TOTAL TAXES, PAID, WHEN PAID, Number of Receipt, March Settlement 1974, June Settlement 1974, Penalty, November Settlement 1974, Penalty, Collections to First Monday in January 1975, Penalty, Delinquent on First Monday in January 1975, Total Delinquent Tax and Penalty, REMARKS.

885
8595 2059 1067 2059

132
1067
260
2059

R483 10806 11624 5232

17198

12514

4684

Main data table with columns for Property Description, Assessed Value, Valuations by School Districts, Taxes, and Payment Status. Includes entries for State of Minnesota and Wilfred L. Champagne.

IN WHOSE NAME ASSESSED	DESCRIPTION OF PROPERTY					ESTIMATED MARKET VALUE	ASSESSED VALUE				SOLD FOR TAXES	VALUATIONS BY SCHOOL DISTRICTS AS EQUALIZED BY DEPARTMENT OF TAXATION						Non-Homestead General Tax Ex. Bonds	Homestead General Tax Ex. Bonds	45% Homestead Credit	Rate & Tax Bonds & Int. (Mills) Co. Sch. Vill. Tot.	SPECIAL TAXES	SPECIAL TAXES	TOTAL TAXES	PAID	WHEN PAID	Number of Receipt	March Settlement 1974	June Settlement 1974	Penalty	November Settlement 1974	Penalty	Collections to First Monday in January 1975	Penalty	Delinquent on First Monday in January 1975	Total Delinquent Tax and Penalty	REMARKS	
	SUBDIVISION	Sec. or Lot	Town or Block	Rag.	No. of Acres		Total	Homestead Tax Credit	Agr.	Non Agr.		District No.	District No.	District No.	District No.	District No.																						
												1843 Mills	1843 Mills	1843 Mills	1843 Mills	1843 Mills	Dollars																					Dollars
33361 State of Minnesota	1	NE 1/4 of NE 1/4	33	136	31	40	483																															
33361 State of Minnesota	2	NW 1/4 of NE 1/4	33	136	31		483																															
33361 State of Minnesota	3	SW 1/4 of NE 1/4	33	136	31		483																															
33361 Alfred & Virginia J. Lawronco	4	SE 1/4 of NE 1/4	33	136	31	40	483	Y	F	490	98		98	SOLD FOR TAXES	H	98																						
33361 State of Minnesota	5																																					
33361 State of Minnesota	6	NE 1/4 of NW 1/4	33	136	31		483																															
33361 State of Minnesota	7	NW 1/4 of NW 1/4	33	136	31		483																															
33361 State of Minnesota	8	SW 1/4 of NW 1/4	33	136	31		483																															
33361 State of Minnesota	9	SE 1/4 of NW 1/4	33	136	31		483																															
33361 State of Minnesota	10																																					
33361 State of Minnesota	11	NE 1/4 of SW 1/4	33	136	31		483																															
33361 State of Minnesota	12	NW 1/4 of SW 1/4	33	136	31		483																															
33361 State of Minnesota	13	SW 1/4 of SW 1/4	33	136	31		483																															
33361 State of Minnesota	14	SE 1/4 of SW 1/4	33	136	31		483																															
33361 State of Minnesota	15																																					
33361 State of Minnesota	16	NE 1/4 of SE 1/4	33	136	31		483																															
33361 State of Minnesota	17	NW 1/4 of SE 1/4	33	136	31		483																															
33361 State of Minnesota	18	SW 1/4 of SE 1/4	33	136	31		483																															
33361 State of Minnesota	19	SE 1/4 of SE 1/4	33	136	31		483																															
	20																																					

1068

R483 1068

1068

40

490

98

98

H 98

FORM 80 MILLER-DAVIS CO., MINNEAPOLIS

IN WHOSE NAME ASSESSED

DESCRIPTION OF PROPERTY

SUBDIVISION

Sec. or Lot, Town or Block, Rng., No. of Acres

No. School District, No. District, Homestead, Tax or No., Indicate Type of Property

ESTIMATED MARKET VALUE

ASSESSED VALUE: Total, Homestead Tax Credit, Agr., Non Agr.

SOLD FOR TAXES

VALUATIONS BY SCHOOL DISTRICTS AS EQUALIZED BY DEPARTMENT OF TAXATION

Table with columns for District No. and Valuation (Mills/Dollars) for districts 80.74, 89.08, 108.93, 117.21.

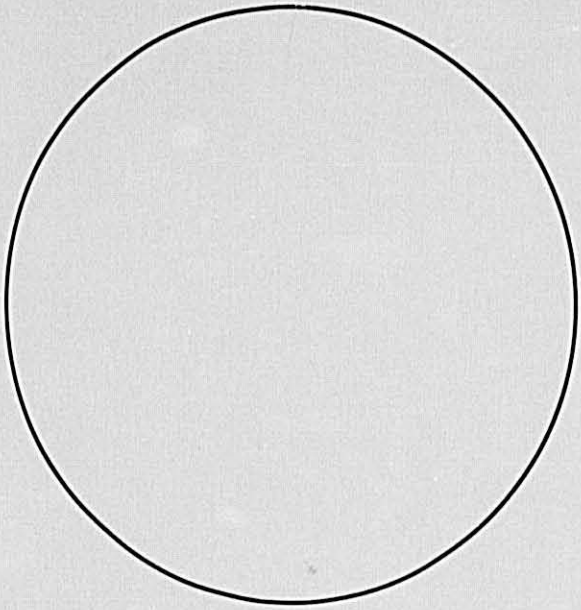
Tax columns: Non-Homestead General Tax, Homestead General Tax, 45% Homestead Credit, Rate & Tax Bonds & Int. (Mills), SPECIAL TAXES, SPECIAL TAXES, TOTAL TAXES.

Payment and penalty columns: PAID, WHEN PAID, Number of Receipt, March Settlement 1974, June Settlement 1974, Penalty, November Settlement 1974, Penalty, Collections to First Monday in January 1975, Delinquent on First Monday in January 1975, Total Delinquent Tax and Penalty.

Main data table with 20 rows. Row 7 has handwritten entries: H 3115, H 2938, = 46053, H 13396, H 1991, H 18610, H 232, H 34229, 23968, 9402, = 33390. Row 11 shows a 'Total' with 10.768 acres and values 294075, 73652, 37229, 71429, 2223. Row 11 also has handwritten entries: 40479, 1991, 90950, 232, 73652.

Right side of the table with columns for taxes and payments. Row 7 has handwritten entries: 218664, 108164, 48680, 17736, 7982, 134426, 202724, 91230, 2780, 1224. Row 11 shows a total: 353090, 331344, 149116, 535318.

IMAGE EVALUATION TEST TARGET (QA-2)



150mm

6"

POINT SIZE

4 Z35lg 1j87 Y046 Zhd6
 6 Hg47j W9pa9 A7a7q Ce92
 8 Su1xi 33q7n Oelvf 4ef8k

10 2xbiy Gmn0c
 Y5a5o E1t9g

12 7n34a K2b8t
 D6fmh 9ss9d

14 Wcuzl L1cdg
 6Y3sl Okjdg

FUTURA

NEWS GOTHIC

14 K2b8t Okjdg
 4ef8k Gmn0c

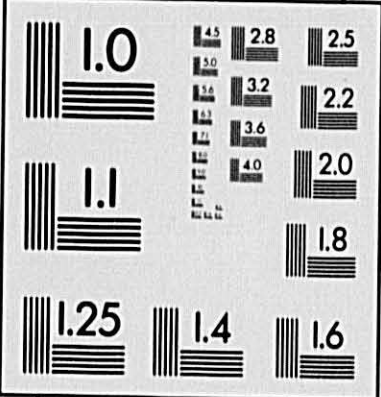
12 Zlo6x Ge92
 7n34a 6Y3sl

10 Y0r8j A7a7q
 Oelvf 2xbiy

8 9ss9d L1cdg
 33q7n E1t9g

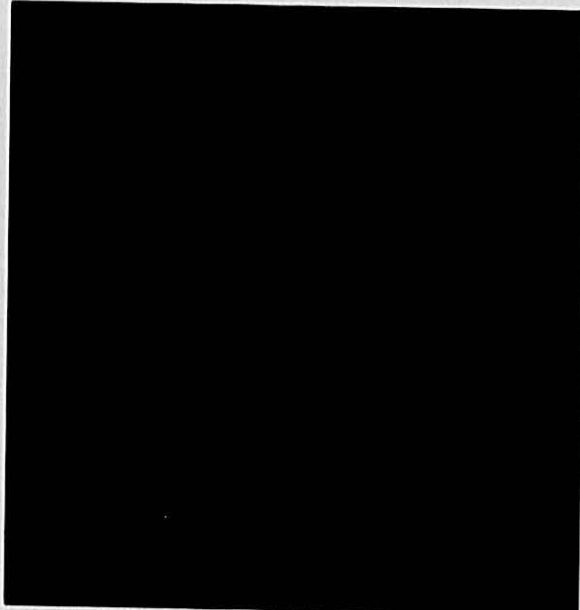
6 Z35lg Hq47j Su1xi Y5a5
 4 D6fmh Wcuzl 1j87 W9pa9

POINT SIZE



4 Jkrio Anshd On789 Gndar Bw1P
 8t1zx Wodnk C6Jfm Zm79a
 T1wh2 zh9oz bunYr Dm525
 KP7Yc Rho9t Umkh9 Ecafd
 C6Jfm Zm79a 3s431 iskrY
 Oz7h9B5e1P Wo8nk 8tizx
 4 C1TRD NZAUS B1WCU ZLICD IZC48
 6 IZC68 USM7P PN65B OIKOG
 8 XMBBO HWEKH XYAHQ SIDDS
 10 VILNU MZHSF XMBBO HWEKH
 I26FRKM EB7AU FUDWM BOONF
 B18AJ Z7QYI OKJDQ

SERIF (BASKERVILLE) SIZE SANS SERIF (MICROFONT) POINT



APPLIED IMAGE, Inc
 1653 East Main Street
 Rochester, NY 14609 USA
 Phone: 716/482-0300
 Fax: 716/288-5989