

ASSESSMENT & TAX LIST

Mc Kinley

1949













List of Lands in the \_\_\_\_\_ of \_\_\_\_\_, County of \_\_\_\_\_, Minn., for the Year 19\_\_\_\_, Which have Become Homesteads or Ceased to be Homesteads  
 SINCE THE LAST REAL ESTATE ASSESSMENT DATE

Form 24 Miller-Davis Company, Minneapolis, State Form No. 67

LANDS BECOMING HOMESTEADS

LANDS CEASING TO BE HOMESTEADS

DESCRIPTION OF PROPERTY

DESCRIPTION OF PROPERTY

Sec. or Lot  
 Town or Block  
 Range  
 Number of Acres of Land  
 Acres 10ths

Sec. or Lot  
 Town or Block  
 Range  
 Number of Acres of Land  
 Acres 10ths

NAME OF OWNER

SUBDIVISION

NAME OF OWNER

SUBDIVISION

INCREASE OR DECREASE in Value of Property Heretofore Assessed, by the Erection or Destruction of Buildings or Structures Thereon

Urban Property Assessed at 40 Per Cent of True and Full Value.  
 (Homesteads up to \$4,000 True and Full Value 25 Per Cent.)

Rural Property Assessed at 33 1/3 Per Cent of True and Full Value.  
 (Homesteads up to \$4,000 True and Full Value 20 Per Cent.)

FORM 3 MILLER-DAVIS COMPANY, MINNEAPOLIS

NAMES OF PROPERTY OWNERS

DESCRIPTION

Sec. or Lot  
 Town or Block  
 Range

True and Full Value of Structures worth more than \$100 each  
 Dollars

KIND OF STRUCTURES

Assessed Value of Additional Structures  
 Dollars

Reduction of Assessed Value on Account of Loss occasioned by Fire, Flood or otherwise  
 Dollars

*SE of SE Sec. 34-138-32*  
*#200 house removed*  
*only \$300 taxon remaining*  
*Wm. Kinsley*







Assessment of T

NAME OF OWNER

Treasurer's Office, Cass County, Minnesota

RECEIVED this, the first Monday (being the 2 day) of January, A. D. 1950, of L. C. Peterson, Auditor of said County, Minnesota, the Tax List of all Taxable Real and Personal Property in the Town of Mc Kinley in said County for the year A. D. 1949, as specified above and amounting to \$100.00

Paul D. Jewell  
County Treasurer.

Office of County Treasurer, Cass County, Minnesota

To L. C. Peterson, County Auditor:

Sir:—I herewith return to you the Tax List for the Town of Mc Kinley in said County for the year 1949, heretofore received from you. I certify that I have compared the same with the duplicate receipts in your office, and have written opposite the amount of each tax so receipted the words "First Quarter Paid", "Second Quarter Paid", "Third Quarter Paid" or "Paid in full" as the case may be, and the number of my receipt given in discharge of said tax, and each tract or lot of real property against which the taxes remain unpaid is delinquent for said year.

Yours respectfully,  
Paul D. Jewell  
County Treasurer.

Auditor's Office, Cass County, Minnesota

I, L. C. Peterson, Auditor of said County, and State of Minnesota, do hereby certify that the following is a correct list of the Taxes levied on the Real and Personal Property in the Town of Mc Kinley in said County for the year 1949.

WITNESS my hand and official seal, this 2 day of January, 1950.

(SEAL) County Auditor.

Auditor's Office, Cass County, Minnesota

I hereby certify that on the first Monday in January 1951, I received of L. C. Peterson, County Treasurer, the Tax List of the Town of Mc Kinley in said County for the year 1949; that I have compared the said list with the Statements receipted for by said Treasurer, which are on file in my office, and that each tract or lot of real property therein against which the taxes, or any part thereof, remains unpaid are delinquent for said year.

(SEAL) County Auditor.



Assessment of 1

TABULAR SCHEDULE OF VALUATIONS,

LEVIED IN THE Town OF McKinley

RATES AND TAXES

COUNTY OF CASS, STATE OF MINNESOTA

$\frac{219.61}{4.58} = 47.94$   
 $\frac{234.61}{24.19} = 9.69$

NAME OF OWNER	VALUATION BY SCHOOL DISTRICTS				RATE OF STATE TAXES		RATE OF COUNTY TAXES					RATE OF TOWN TAXES										SCHOOL TAXES			TAXES LEVIED					ALL OTHER TAXES					
	School District No.	Agricultural Lands Dollars	Non-Agricultural Lands Dollars	Personal Property Dollars	Total Value of all Property except Money and Credits Dollars	Total Rate of State Tax	Rev. Mills	R. & H. Mills	Welfare Mills	Bonds and Int. Mills	Total Rate of County Tax Mills	Rev. Mills	R. & H. Mills	Drag Tax Mills	State Loan Mills	Tel Mills	Total Rate of Town Tax Mills	Local Mills	Special Mills	State Loan Mills	Deficiency Mills	Tuition Mills	Transportation Mills	Co. Mills	Brd. Mills	Local 1 Mill	Special	State Loan	Total School Taxes	FUNDS	Rate	Amounts			
																																	Local 1 Mill	Special	State Loan
1	Un	4127	368	10167	51,822	H. 4.11	267	69	49.9	17.8	103.3	6.7	15	1	10	327	1	15	43	2.5	10	8	79.5	219.61	4129	61927	177524	10322	41284	33027	328213	State-Non-Homestead	151.12		
2						N. H. 4.88											1	30	43	2.5	10	8	94.8	234.61	1054	31605	45297	2634	10535	8428	49553	State-Homestead	212.98		
3																																			
4	Assessed Value Homestead	Rural 18865	All Other	Personal Property	Total 18865																														
5	Non-Homestead Total	22790		10167	32957																														
6		41,655		10167	51,822																														
7																																			
8																																			

Total Levy, \$ 11,689.24

Total Number of Acres 18314

I, L. L. Peterson, Auditor of said County and State aforesaid, do hereby certify that the foregoing is a true and correct Schedule, showing the valuation of all the taxable property, in the year of 1914, in said County, the several rates of Taxation and Totals of the several Tax Funds levied thereon for the year A. D. 1914, day of Dec 2 A. D. 1914.  
 Witness my hand and official seal, this

24

11,689

18314

1914

Dec 2

A. D. 1914

L. L. Peterson

County Auditor



Total Taxes Real Estate 9257.46  
 Pers. Prop. 2431.78  
 Total 11,689.24







Assessment Roll and Tax List of Real Property in the South of McKinley

IN WHOSE NAME ASSESSED	TO WHOM TRANSFERRED	DESCRIPTION OF PROPERTY				No. School District	Indicate Homestead Yes or No	Indicate Agricultural Yes or No	TRUE AND FULL VALUATIONS				ASSESSED VALUATIONS					Total Assessed Value as Equalized by the Board of Review	FINAL EQUALIZED VALUE		
		SUBDIVISION	Sec. or Lot	Town or Block	Rng.				Number of Acres of Land	LAND Exclusive of Structures and Improvements	BUILDINGS and Other Structures	MACHINERY Permanently Attached to Real Estate	TOTAL True and Full Value	RURAL		ALL OTHER				MACHINERY Permanently Attached to Real Estate	TOTAL ASSESSED VALUE
														Acres	100ths	Homestead Up to \$4,000 20%	Over \$4,000 and Non-Homestead 33 1/3%				
Palpe & Mary Melby	Laurie V. Baitley	NW 1/4 of NE 1/4	Lot 1	138	32	40	16	Yes													
"	"	NW 1/4 of NE 1/4	Lot 2	40		48		"													
"	"	SW 1/4 of NE 1/4		40				"													
"	"	SE 1/4 of NE 1/4		40				"													
"	"	NE 1/4 of NW 1/4	Lot 3	40		80		No													
"	"	NW 1/4 of NW 1/4	Lot 4	41		13		"													
Best Malms	Palpe & Mary Melby	SW 1/4 of NW 1/4		40				"													
"	Laurie V. Baitley	SE 1/4 of NW 1/4		40				"													
"	"	NE 1/4 of SW 1/4		40				Yes													
"	Olga Lloyd & Clifford L. Gardner	NW 1/4 of SW 1/4		40				"													
"	John Grove	SW 1/4 of SW 1/4		40				No													
"	Olga Lloyd & Clifford L. Gardner	SE 1/4 of SW 1/4		40				Yes													
"	"	NE 1/4 of SE 1/4		40				"													
"	"	NW 1/4 of SE 1/4		40				"													
"	"	SW 1/4 of SE 1/4		40				"													
"	"	SE 1/4 of SE 1/4		40				"													
				64		59															

Abate. #4786

Abate. #3991

Abate. #3991

Cass County, Minnesota, for Taxes for the Year 1949.

SOLD FOR TAXES	VALUATIONS BY SCHOOL DISTRICTS AS EQUALIZED BY DEPARTMENT OF TAXATION						Tax including State Homestead	State Tax on Non-Homestead 4.5%	SPECIAL TAXES	TOTAL TAXES	PAID	WHEN PAID	Number of Receipt	March Settlement 1950	June Settlement 1950	Penalty	November Settlement 1950	Penalty	Collections to First Monday in January 1951	Penalty	Delinquent on First Monday in January 1951	Total Delinquent Tax and Penalty	REMARKS
	District No.	District No.	District No.	District No.	District No.	District No.																	
	Rate	Rate	Rate	Rate	Rate	Rate																	
1	21	145					3250		3250	1	Balance Paid	MAY 31 1950	13593										
2	21	118					2592		2592	2	Part Paid	MAY 31 1950		8777		8919							
3	21	109					2394		2394	3	Part Paid	MAY 31 1950	9770										
4	21	425					9596	06 03	9602	4	Balance Paid	MAY 31 1950	13593										
5										5	Balance Paid	MAY 31 1950	13593										
6		160					3514	74 01	3588	6	Part Paid	MAY 31 1950	4490	2945		2915							
7		100					2196	46 23	2242	7	Part Paid	MAY 31 1950											
8		136					2986	62	3048	8	2nd Half Paid	OCT 4 1950	12547									13.68 Abated	
8		197					4326	90 31	4416	8	1st Half Paid	MAY 1 1950	7343										
9		104					2284	48 24	2332	9	Balance Paid	MAY 31 1950	1495	1166		1166							
10										10	2nd Half Paid	OCT 30 1950	13128										
11		110					2416		2416	11	1st Half Paid	JUN 26 1950	5087										
11		H 102								11	2nd Half Paid	OCT 30 1950	13128										
12		121					2240		2240	12	1st Half Paid	JUN 26 1950	5087										
12										12	2nd Half Paid	OCT 31 1950	5087										
13		55					1208	26 13	1234	13	1st Half Paid	MAY 18 1950	6509	617		617							
13		H 530								13	2nd Half Paid	OCT 30 1950	13128										
14		163					11640		11640	14	1st Half Paid	JUN 26 1950	5087										
15										15													
16		214					4700		4700	16	PAID IN FULL	MAR 23 1950	3835	4700									
17		104					2284		2284	17	PAID IN FULL	MAR 23 1950	3835	2284									
18		101					2218		2218	18	PAID IN FULL	MAR 23 1950	3835	2218									
19		101					2218		2218	19	PAID IN FULL	MAR 23 1950	3835	2218									
20										20													
				H 2062		628		59076		290		59366		265 61		31437						12 68	







Assessment Roll and Tax List of Real Property in the Town of Maple

IN WHOSE NAME ASSESSED	TO WHOM TRANSFERRED	DESCRIPTION OF PROPERTY				No. Section District	Indicate Homestead Yes or No	Indicate Agricultural Yes or No	TRUE AND FULL VALUATIONS					ASSESSED VALUATIONS					FINAL EQUALIZED VALUE		
		SUBDIVISION	Sec. or Lot	Town or Block	Rng.				Number of Acres of Land	LAND Exclusive of Structures and Improvements	BUILDINGS and Other Structures	MACHINERY Permanently Attached to Real Estate	TOTAL True and Full Value	RURAL		ALL OTHER		MACHINERY Permanently Attached to Real Estate		TOTAL ASSESSED VALUE	Total Assessed Value as Equalized by the Board of Review
														Acres	100ths	Homestead Up to \$4,000 20%	Over \$4,000 and Non-Homestead 33 1/3%				
Magnus Gjertson		Lot 1 less E. 100' Hwy	3	138	32	39	75	20													
"		NW 1/4 of NE 1/4				40															
"		SW 1/4 of NE 1/4				40															
"		SE 1/4 of NE 1/4 less E. 100' Hwy				40															
Erwin + Vermont Mullister		NE 1/4 of NW 1/4 Lot 3				40	24														
"		NW 1/4 of NW 1/4 Lot 4				40	48														
State of Minnesota		SW 1/4 of NW 1/4																			
B. J. Venable	State of Minnesota	SE 1/4 of NW 1/4				40															
State of Minnesota		NE 1/4 of SW 1/4																			
M. P. Ry. Co.		NW 1/4 of SW 1/4				40															
Erwin + Leski Williams		SW 1/4 of SW 1/4				40															
Glaucus Park Hotel		SE 1/4 of SW 1/4				40															
Davidson + Thomas M. Lye		NE 1/4 of SE 1/4				40															
"		NW 1/4 of SE 1/4				40															
"		SW 1/4 of SE 1/4				40															
"		SE 1/4 of SE 1/4				40															
						56047															

SOLD FOR TAXES	VALUATIONS BY SCHOOL DISTRICTS AS EQUALIZED BY DEPARTMENT OF TAXATION						Tax Including State Homestead	State Tax on Non-Homestead	SPECIAL TAXES	TOTAL TAXES	PAID	WHEN PAID	Number of Receipt	March Settlement 1950	June Settlement 1950	Penalty	November Settlement 1950	Penalty	Collections to First Monday in January 1951	Penalty	Delinquent on First Monday in January 1951	Total Delinquent Tax and Penalty	REMARKS
	District No.	District No.	District No.	District No.	District No.	District No.																	
	Rate	Rate	Rate	Rate	Rate	Rate																	
1						45	988	20	1008	1	2nd Half Paid	OCT 31 1950	14232		504		504						
2						49	1076	22	1098	2	2nd Half Paid	OCT 31 1950	14232		549		549						
3						35	768	16	784	3	1st Half Paid	OCT 31 1950	14232		392		392						
4						21	1560	32	1592	4	1st Half Paid	OCT 31 1950	14232		796		796						
5										5													
6	HOLD FOR TAXES					35	768	16	784	6												784	
7	HOLD FOR TAXES					35	768	16	784	7												784	
8										8													
9	HOLD FOR TAXES					35	768	16	784	9	Forfeited												784 Cancelled
10										10													
11										11													
12							52	1142	24	1166	12	PAID IN FULL	MAY 31 1950	10847		1166							
13	HOLD FOR TAXES					73	1604	34	1638	13												1638	1802
14						52	1142	24	1166	14	PAID IN FULL	MAY 31 1950	10852		1166								
15										15													
16						35	768	16	784	16	PAID IN FULL	MAY 31 1950											
17						61	1340	28	1368	17	PAID IN FULL	MAY 31 1950			3756								
18						79	1734	36	1770	18	PAID IN FULL	MAY 31 1950											
19						55	1208	26	1234	19	PAID IN FULL	MAY 31 1950											
20										20													
						717	15634	326	15960						9729		2241			3206		784	











































































Assessment Roll and Tax List of Real Property in the Town of Maple Valley

IN WHOSE NAME ASSESSED	TO WHOM TRANSFERRED	DESCRIPTION OF PROPERTY				TRUE AND FULL VALUATIONS					ASSESSED VALUATIONS					FINAL EQUALIZED VALUE	
		Subdivision	Sec. or Lot	Town or Block	No. of Acres of Land	LAND Exclusive of Structures and Improvements	BUILDINGS and Other Structures	MACHINERY Permanently Attached to Real Estate	TOTAL True and Full Value	RURAL		ALL OTHER		MACHINERY Permanently Attached to Real Estate	TOTAL ASSESSED VALUE		Total Assessed Value as Equalized by the Board of Review
										Homestead Up to \$4,000 20%	Over \$4,000 and Non-Homestead 33 1/3%	Homestead Up to \$4,000 25%	Over \$4,000 and Non-Homestead 40%				
State of Minnesota		NE 1/4 of NE 1/4	22	138	32												
<del>Thomas &amp; Millie Clew</del>	<del>Carl Boberg</del>	NW 1/4 of NE 1/4			40												
	"	SW 1/4 of NE 1/4			40												
State of Minnesota		SE 1/4 of NE 1/4			40												
		NE 1/4 of NW 1/4			40												
Richard & Audrey Eye		NW 1/4 of NW 1/4			40												
Vernon W. Martin		SW 1/4 of NW 1/4			40												
		SE 1/4 of NW 1/4			40												
Richard & Audrey Eye		NE 1/4 of SW 1/4			40												
		NW 1/4 of SW 1/4			40												
Guy J. & Leah M. Winkler		SW 1/4 of SW 1/4			40												
<del>Walter Martin</del>	<del>Walter M. B. Martin &amp; Vernon W. Martin</del>	SE 1/4 of SW 1/4			40												
<del>Walter &amp; Clara Johnson</del>	<del>Carl S. Nelson</del>	NE 1/4 of SE 1/4			40												
		NW 1/4 of SE 1/4			40												
Carl A. Hagberg		SW 1/4 of SE 1/4			40												
		SE 1/4 of SE 1/4			40												
Richard & Audrey Eye					40												
<del>Walter &amp; Clara Johnson</del>	<del>Carl S. Nelson</del>				40												
Carl A. Hagberg					40												

1560

Cass County, Minnesota, for Taxes for the Year 1949.

SOLD FOR TAXES	VALUATIONS BY SCHOOL DISTRICTS AS EQUALIZED BY DEPARTMENT OF TAXATION						Tax Including State Homestead	State Tax on Non-Homestead 4.37 Mills	SPECIAL TAXES	TOTAL TAXES	PAID	WHEN PAID	Number of Receipt	March Settlement 1950	June Settlement 1950	Penalty	November Settlement 1950	Penalty	Collections to First Monday in January 1951	Penalty	Delinquent on First Monday in January 1951	Total Delinquent Tax and Penalty	REMARKS
	District No.	District No.	District No.	District No.	District No.	District No.																	
	Rate	Rate	Rate	Rate	Rate	Rate																	
1							1538	32	1570	2 PAID IN FULL	MAY 17 1950	7465		1570									
2							1538	32	1570	3 PAID IN FULL	MAY 17 1950	7465		1570									
3																							
4																							
5																							
6							2460		2460	2nd Half Paid	OCT 26 1950	13393		1230		1230							
7							4128		4128	1st Half Paid	MAY 31 1950	8491		2064		2064							
8							3052		3052	2nd Half Paid	OCT 31 1950	13393		1526		1526							
9							2108		2108	1st Half Paid	MAY 31 1950	8491		1054		1054							
10																							
11							2416		2416	2nd Half Paid	OCT 26 1950	13393		1208		1208							
12							2174		2174	1st Half Paid	MAY 31 1950	8491		1087		1087							
13							1822		1822	2nd Half Paid	OCT 31 1950	13393		911		911							
14							2240		2240	1st Half Paid	MAY 31 1950	8491		1120		1120							
15																							
16							2482		2482	2nd Half Paid	OCT 31 1950	13393		1241		1241							
17							462		462	1st Half Paid	MAY 31 1950	8491		231		231							
18							1910		1910	2nd Half Paid	OCT 31 1950	13393		955		955							
19							2460		2460	1st Half Paid	MAY 31 1950	8491		1230		1230							
20																							
							307.90	.64	308.54					18995		11859							























































Assessment Roll and Tax List of Real Property in the

Form 500-1-1949

IN WHOSE NAME ASSESSED TO WHOM TRANSFERRED

DESCRIPTION OF PROPERTY

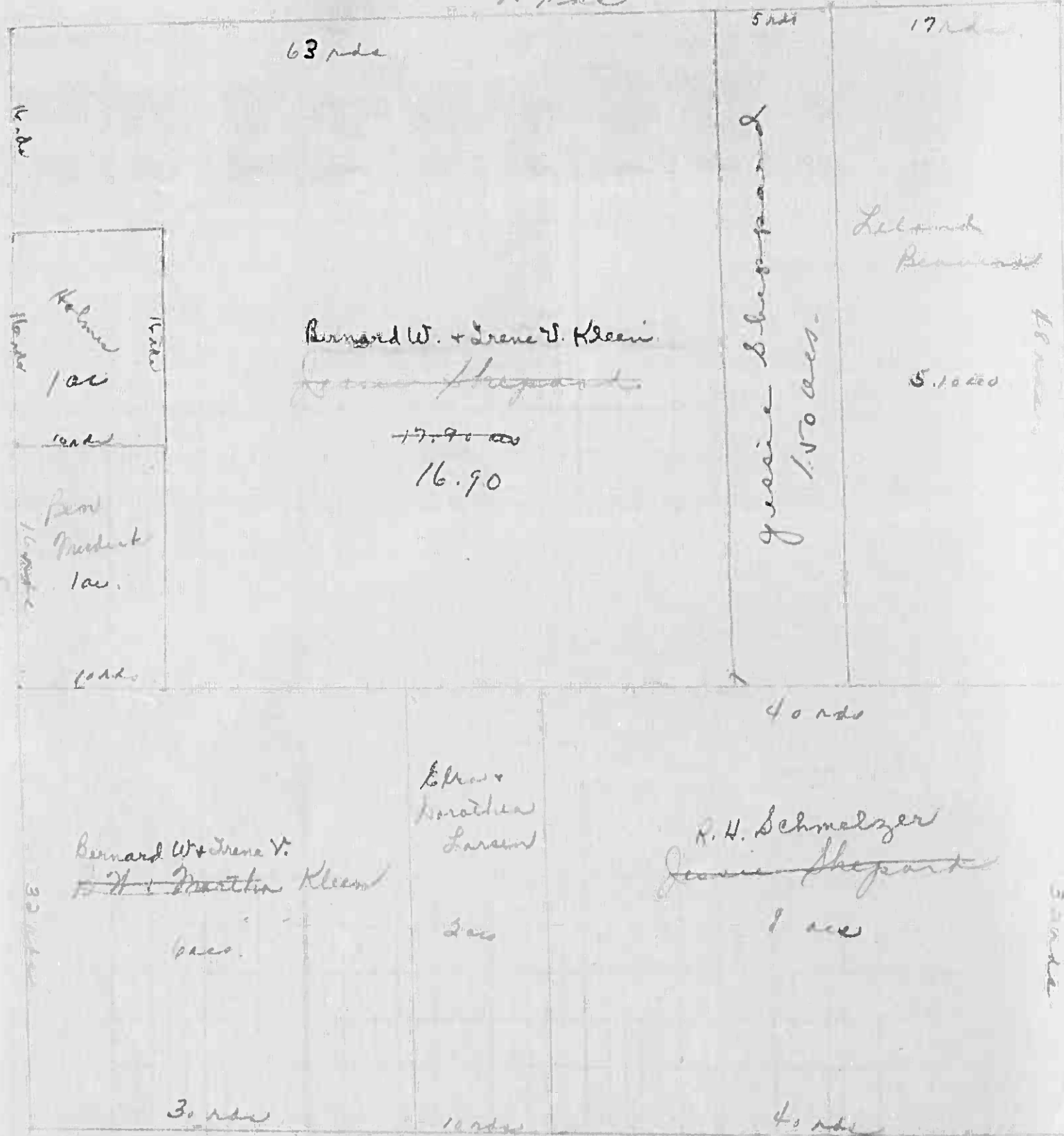
Table with columns: Subdivision, Sec. or Lot, Town or Block, Rng., Number of Acres of Land, No. School District, Indicate Homestead, Indicate Agricultural, LAND Exclusive Structure and Improvements, Dollars.

Leland Beavers
P. H. Schmelzer
Bernard W. + Irene V. Kleen
Ben Truckick

Jessie Shepard

3200

Part of 1/2 of 1/2
Sec 35-138-32



Handwritten notes on the left side of the map: 'Kalam 1 ac', 'road', 'Ben Truckick 1 ac', 'road'.

Handwritten notes in the center of the map: 'Bernard W. + Irene V. Kleen', 'Jessie Shepard', '17.90', '16.90'.

Handwritten notes on the right side of the map: 'Leland Beavers', '5.10 ac', 'road', 'H. H. Schmelzer', 'Jessie Shepard', '1 ac'.

30 rods

12 rods

40 rods

Cass County, Minnesota, for Taxes for the Year 1949.

Main tax table with columns: SOLD FOR TAXES, VALUATIONS BY SCHOOL DISTRICTS AS EQUALIZED BY DEPARTMENT OF TAXATION, State Tax on Non-Homestead, SPECIAL TAXES, TOTAL TAXES, PAID, WHEN PAID, Number of Receipt, March Settlement 1950, June Settlement 1950, November Settlement 1950, Collections to First Monday in January 1951, Delinquent on First Monday in January 1951, Total Delinquent Tax and Penalty, REMARKS.

SOLD FOR TAXES

SOLD FOR TAXES

SOLD FOR TAXES

20

Handwritten numbers: 11, 23, 96, 119, 11=130

Handwritten numbers: 2614, 50, 2922, 258

PAID IN FULL SEP 1 1950
2nd Half Paid Oct. 10 1950
1st Half Paid MAY 31 1950

Handwritten numbers: 1166, 493, 493, 35

506

264

770







