

Auditor's Office, Cass County, Minnesota.

I, E. T. Bacon Auditor of Cass County, and
State of Minnesota, do hereby certify that the following is a correct list of the Taxes levied on the Real and Personal
Property in the Town of May for the year 1915 (L. S.)

WITNESS my hand and official seal this 3 day of January 1916.
E. T. Bacon County Auditor.

Treasurer's Office, Cass County, State of Minnesota.

RECEIVED this, the first Monday (being the 3 day) of January, A. D. 1916, of E. T. Bacon
Auditor of Cass County, Minnesota, the Tax List of all taxable Real and Personal Property in the Town
of May in said County of Cass for the year A. D. 1915, as specified above, and
amounting to thirteen thousand nine hundred forty & 71/100 Dollars.

W. J. McKown
Treasurer of Cass County.

State of Minnesota,

County of Cass

OFFICE OF COUNTY TREASURER

Walker, Minn. Jan. 1 1917

To C.D. Bacon County Auditor:

SIR:—I herewith return to you the Tax List for the Town of May in said Cass County, for the year 1915 heretofore received from you. I certify that I have compared the same with the duplicate receipts in your office, and have written opposite the amount of each tax so received the words "One-Half Paid" or "Paid in Full" as the case may be, and the number of my receipt given in discharge of said Tax, and each tract or lot of Real Property against which the Taxes remain unpaid is delinquent for said year.

Yours respectfully,

W. J. McKee County Treasurer.

Walker, Minn. Jan. 2, 1917

Auditor's Office, Cass County, Minn.

RECEIVED OF W. J. McKee County Treasurer, the Tax List for the Town of May in said County of Cass for the year 1915.

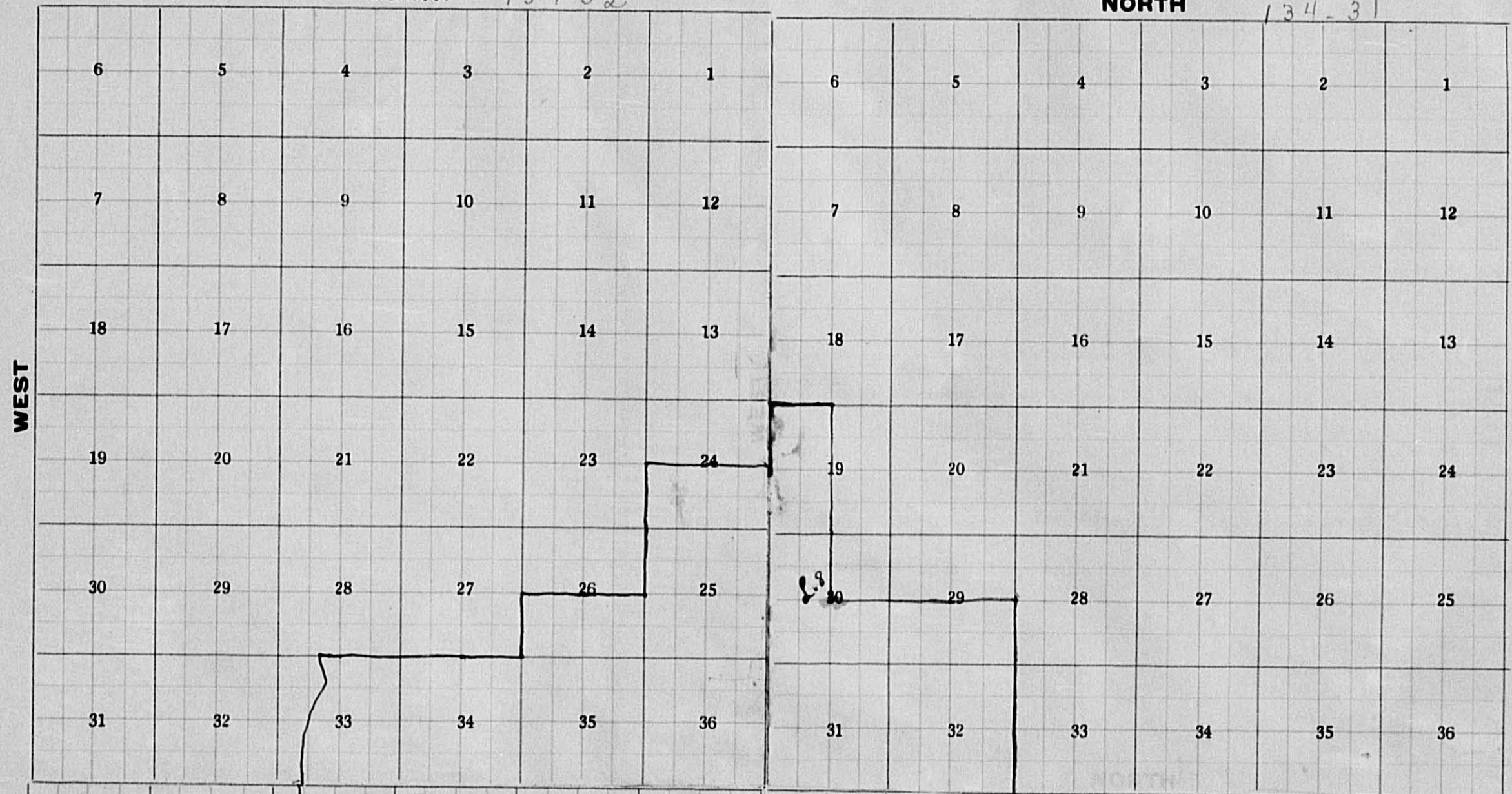
C.D. Bacon & Co. County Auditor.

School Dist. #12

6th of June - 1916

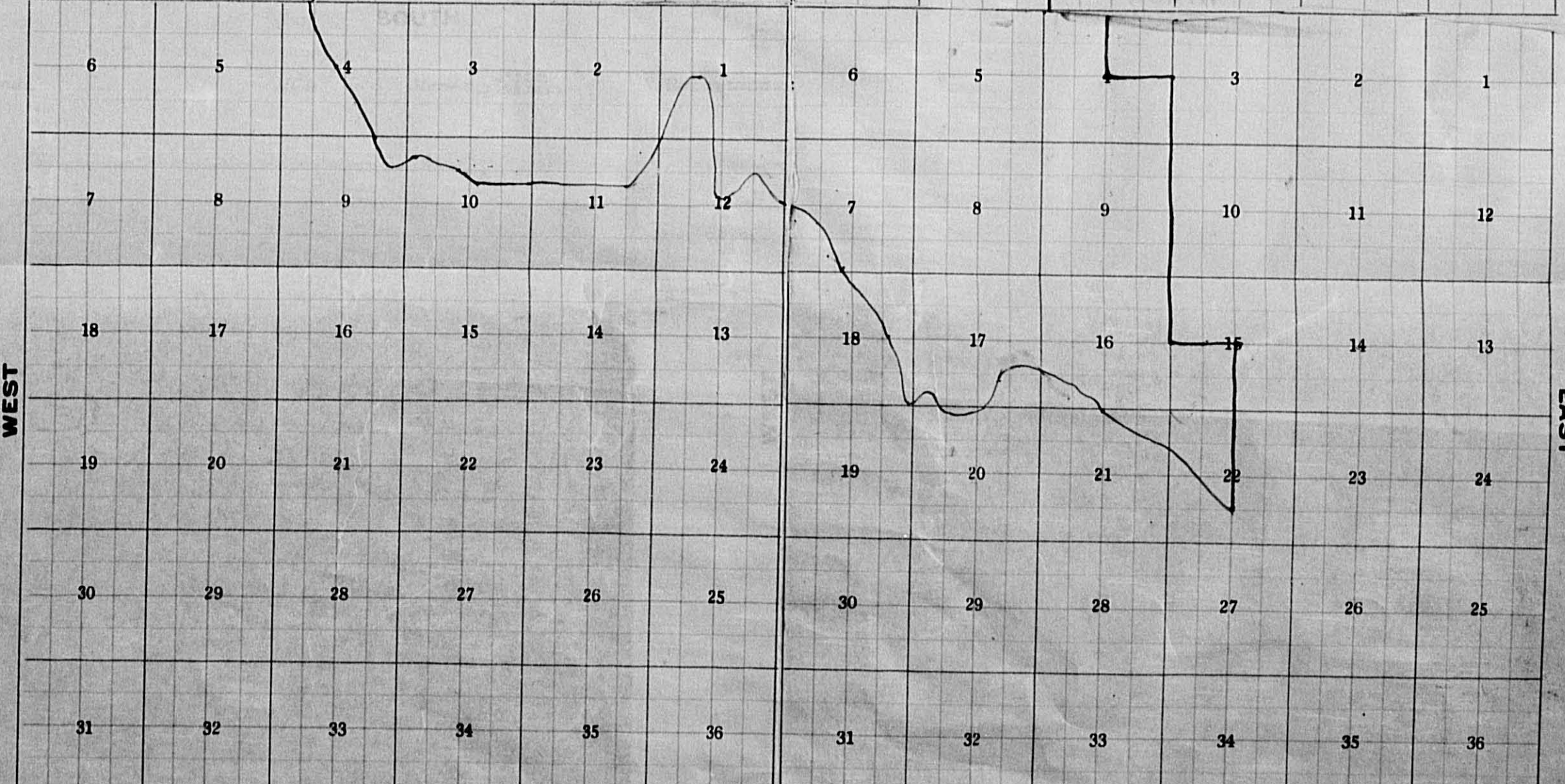
NORTH 134-32

NORTH 134-31



133-32

WEST



133-31

EAST

Tax List of Real Property in the Town of May

Kimball-Storer Co., Minneapolis, Minn.—78065

IN WHOSE NAME ASSESSED	TO WHOM TRANSFERRED	Sold for Taxes	SUBDIVISION	Sec. or Lot	Town or Block	Rng.	No. of Acres		VALUATION		GENERAL TAXES		State School Bonds	State No.
							Acres	100ths	Dollars	Mills	State Sch'l	County		
			Footings Brought Forward,											
St. Paul & Chicago N.P. Ry. Co.			NE 1/4 of NE 1/4	1	33	31	40	180	1074					233
"			NW 1/4 of NE 1/4	"	"	"	40	180	1074					233
"			SW 1/4 of NE 1/4	"	"	"	40	180	1074					233
St. Paul & Chicago N.P. Ry. Co.			SE 1/4 of NE 1/4	"	"	"	40	180	1074					233
"			NE 1/4 of NW 1/4	"	"	"	160	720	4295					
"			NW 1/4 of NW 1/4	"	"	"	160	720	4295					
"			SW 1/4 of NW 1/4	"	"	"	160	720	4295					
"			SE 1/4 of NW 1/4	"	"	"	160	720	4295					
"			NE 1/4 of SW 1/4	"	"	"	160	720	4295					
"			NW 1/4 of SW 1/4	"	"	"	160	720	4295					
"			SW 1/4 of SW 1/4	"	"	"	160	720	4295					
"			SE 1/4 of SW 1/4	"	"	"	160	720	4295					
"			NE 1/4 of SE 1/4	"	"	"	160	720	4295					233
"			NW 1/4 of SE 1/4	"	"	"	160	720	4295					233
"			SW 1/4 of SE 1/4	"	"	"	160	720	4295					233
"			SE 1/4 of SE 1/4	"	"	"	160	720	4295					233
			Footings Carried Forward,											
				640	2880		17181	1864						

P.R.H. Dist. No. 80

Cass County, Minnesota, for Taxes of the Year 1915

SCHOOL DISTRICT	TOTAL TAXES	PAID	WHEN PAID	No. of Receipt	March Settlement	June Settlement	Penalty	November Settlement	Penalty	Collections to First Monday in January	Penalty	Delinquent on First Monday in January	REMARKS
	1307		PAID in full MAR 14 1916	2193									
	1307		1st Half Paid MAY 20 1916										
	1307		2nd Half Paid OCT 26 1916										
	1307		1st Half Paid MAY 20 1916	3889									
	1307		2nd Half Paid OCT 26 1916										
	1307		PAID in full MAR 14 1916	2193									
	4295		2nd Half Paid OCT 26 1916										
	4295		1st Half Paid MAY 20 1916										
	4295		2nd Half Paid OCT 26 1916										
	4295		1st Half Paid MAY 20 1916										
	5227		2nd Half Paid OCT 26 1916										
	5227		1st Half Paid MAY 20 1916										
	19045												

8618 3889

6909

6909

Tax List of Real Property in the Town of May

Kimball-Storer Co., Minneapolis, Minn. - 70055

Cass County, Minnesota, for Taxes of the Year 1915

IN WHOSE NAME ASSESSED	TO WHOM TRANSFERRED	Sold for Taxes	SUBDIVISION	Sec. or Lot	Town or Rng. Block	No. of Acres Acres 100ths	VALUATION Dollars	GENERAL TAXES			S. R. Ditch No.	SCHOOL DISTRICT		TOTAL TAXES	PAID	WHEN PAID Month Day Year	No. of Receipt	March Settlement	June Settlement	Penalty	November Settlement	Penalty	Collections to First Monday in January	Penalty	Delinquent on First Monday in January	REMARKS									
								State	County	Local Sch.		District No.	District Rate																						
Footings Brought Forward,																																			
Samuel Hix			NE 1/4 of NE 1/4	2	1333	1/60	765																												
"			NW 1/4 of NE 1/4																																
"			SW 1/4 of NE 1/4																																
"			SE 1/4 of NE 1/4																																
H. I. Ritter			NE 1/4 of NW 1/4	"	"	40	180																												
J. E. Hix			NW 1/4 of NW 1/4 Lot 4	"	"	37	17																												
Geo. E. Brown			SW 1/4 of NW 1/4	"	"	40	331																												
"			SE 1/4 of NW 1/4	"	"	40	180																												
"			NE 1/4 of SW 1/4	"	"	40	196																												
Horton C. Mosher			NW 1/4 of SW 1/4	"	"	40	183																												
Geo. E. Brown			SW 1/4 of SW 1/4	"	"	40	203																												
"			SE 1/4 of SW 1/4	"	"	40	270																												
Eustace D. Ward			NE 1/4 of SE 1/4	"	"	40	180																												
"			NW 1/4 of SE 1/4	"	"	40	180																												
Peter Paulson	Metta Paulson		SW 1/4 of SE 1/4	"	"	40	225																												
"	"		SE 1/4 of SE 1/4	"	"	40	241																												
Footings Carried Forward,																																			
						637	17	3301																											
												19689																							

2nd Half Paid OCT 9 - 1916 7849
 4563 1st Half Paid MAY 31 1916 3793

3477 ✓ 2286 ✓

1074 2nd Half Paid OCT 2 - 1916 5402
 996 1st Half Paid MAY 31 1916 7694
 1974 2nd Half Paid OCT 2 - 1916 5732
 1974 1st Half Paid MAY 31 1916 2189
 1074 2nd Half Paid OCT 31 1916 5206
 1074 1st Half Paid MAY 31 1916 5206

1485 ✓ 1485 ✓
 537 ✓ 537 ✓

2nd Half Paid OCT 31 1916
 1169 1st Half Paid MAY 31 1916 9189
 2nd Half Paid OCT 31 1916
 1091 1st Half Paid MAY 31 1916 5206
 1210 Paid in Full MAY 31 1916 6389
 2nd Half Paid OCT 31 1916 9189
 1611 1st Half Paid MAY 31 1916 5206

1130 ✓ 1130 ✓
 1210 ✓
 803 ✓ 806 ✓

2nd Half Paid OCT 21 1916
 1074 1st Half Paid MAY 23 1916 8264
 2nd Half Paid OCT 21 1916
 1074 1st Half Paid MAY 23 1916 4032
 1342 Paid in Full MAY 18 1916 3739
 1437 Paid in Full MAY 18 1916

1074 ✓ 1074 ✓
 2779 ✓

1231 Paid subsequent to Cert. No. 3284

Tax List of Real Property in the Town of May

Kimball-Storer Co., Minneapolis, Minn.—78055

IN WHOSE NAME ASSESSED	TO WHOM TRANSFERRED	Sold for Taxes	SUBDIVISION	Sec. or Lot	Town or Block	Rng.	No. of Acres	VALUATION	GENERAL TAXES			Ditch No.						
									State	State	State							
								Dollars	\$	cts.	\$	cts.	\$	cts.				
Footings Brought Forward,																		
Lake Region Land Co.	J. C. Hicks		NE 1/4 of NE 1/4 Lot 1	3	123	31	40	180										
Andrew Rosvold			NW 1/4 of NE 1/4	"	"	"	36	70	196									
Aug. Miller			SW 1/4 of NE 1/4	"	"	"	40	196										
Ralph B. Millard	J. C. Hicks		SE 1/4 of NE 1/4	"	"	"	40	180										
H. S. Gearhart			NE 1/4 of NW 1/4	"	"	"	40	196										
Patrick Mee			NW 1/4 of NW 1/4	"	"	"	40	210								582		
Chas. McCreve			SW 1/4 of NW 1/4	"	"	"	40	183										
			SE 1/4 of NW 1/4	"	"	"	40	180										
N. S. Finn			NE 1/4 of SW 1/4	"	"	"	40	169										
Aug. Miller			NW 1/4 of SW 1/4	"	"	"	40	180										
"			SW 1/4 of SW 1/4	"	"	"	40	180										
N. S. Finn			SE 1/4 of SW 1/4	"	"	"	40	180										
Geo. Warden			NE 1/4 of SE 1/4	"	"	"	40	198										
N. S. Finn			NW 1/4 of SE 1/4	"	"	"	40	180								1181		
"			SW 1/4 of SE 1/4	"	"	"	40	180										
Geo. Warden			SE 1/4 of SE 1/4	"	"	"	40	180								1074		
Footings Carried Forward,																		
							636	70	2968									

Cass County, Minnesota, for Taxes of the Year 1915

SCHOOL DISTRICT	TOTAL TAXES	PAID	WHEN PAID	No. of Receipt	March Settlement	June Settlement	Penalty	November Settlement	Penalty	Collections to First Monday in January	Penalty	Delinquent on First Monday in January	REMARKS
\$	cts.	\$	cts.	\$	cts.	\$	cts.	\$	cts.	\$	cts.	\$	cts.
1074			Paid in Full APR 21 1916	2845									
1169			2nd Half Paid OCT 31 1916	9187									
1169			1st Half Paid MAY 31 1916	5307									
1169			Paid in Full OCT 31 1916	9886									
1074			Paid in Full MAY 26 1916	4399									
1169			X 4968 Paid in Full FEB 29 1916	3071									
1253			2nd Half Paid OCT 23 1916	8298									
1091			1st Half Paid MAY 31 1916	6523									
1074			2nd Half Paid OCT 26 1916	8684									
1074			1st Half Paid MAY 16 1916	3595									
1008			Paid in Full MAR 27 1916	2340									
1074			Paid in Full OCT 31 1916	9886									
1074			Paid in Full OCT 31 1916										
1074			Paid in Full MAR 27 1916	2340									
1181			Paid Feb 10 1916	6235									
1074			Paid in Full MAR 27 1916										
1074			Paid in Full MAR 27 1916	2340									
1074			Paid Feb 10 1916	6235									
Footings Carried Forward,													
17706													

Tax List of Real Property in the Town of May

Kimball-Storer Co., Minneapolis, Minn.—78055

IN WHOSE NAME ASSESSED	TO WHOM TRANSFERRED	Sold for Taxes	SUBDIVISION	Sec. or Lot	Town or Block	Rng.	No. of Acres		VALUATION	GENERAL TAXES				Ditch No.	
							Acres	100ths		State	State Sch'l	County	Local Schl.		Total
									Dollars	\$	cts.	\$	cts.	\$	cts.
Footings Brought Forward,															
Franks Seadlund			NE 1/4 of NE 1/4				10	1333	160	961					
"			NW 1/4 of NE 1/4												
"			SW 1/4 of NE 1/4												
"			SE 1/4 of NE 1/4												
W. Brendt			NE 1/4 of NW 1/4				"	"	160	360					
"			NW 1/4 of NW 1/4												
Geo. Brendt			SW 1/4 of NW 1/4							369					
"			SE 1/4 of NW 1/4												
"			NE 1/4 of SW 1/4				"	"	160	360					
"			NW 1/4 of SW 1/4							203					
"			SW 1/4 of SW 1/4							180					
"			SE 1/4 of SW 1/4							180					
Somers Lumber Co.			NE 1/4 of SE 1/4				"	"	40	180					
Frank Seadlund			NW 1/4 of SE 1/4				"	"	40	180					
J. H. Morgan			SW 1/4 of SE 1/4				"	"	40	189					
J. Britton			SE 1/4 of SE 1/4				"	"	40	180					
							Footings Carried Forward,				640	3342			

Cass County, Minnesota, for Taxes of the Year 1915

SCHOOL DISTRICT	TOTAL TAXES	PAID	WHEN PAID	No. of Receipt	March Settlement	June Settlement	Penalty	November Settlement	Penalty	Collections to First Monday in January	Penalty	Delinquent on First Monday in January	REMARKS														
														District No.	District Rate	District No.	District Rate										
														\$	cts.	\$	cts.	\$	cts.	\$	cts.	\$	cts.	\$	cts.	\$	cts.
			2nd Half Paid SEP 30 1916	7680																							
	5731		1st Half Paid MAY 20 1916	3864		2866		2865																			
	2147		2nd Half Paid OCT 28 1916	8806																							
	4570		1st Half Paid MAY 29 1916	4570		1074		1074																			
	2201		2nd Half Paid OCT 24 1916																								
			1st Half Paid MAY 31 1916																								
	3147		2nd Half Paid OCT 24 1916	8395																							
	5739		1st Half Paid MAY 31 1916	5739		3853		3853																			
	1210		2nd Half Paid OCT 24 1916																								
			1st Half Paid MAY 31 1916																								
	1074		2nd Half Paid OCT 24 1916																								
			1st Half Paid MAY 31 1916																								
	1074		2nd Half Paid OCT 24 1916																								
			1st Half Paid MAY 31 1916																								
	1074		Paid in Full MAY 31 1916	5048		1074																					
			2nd Half Paid SEP 30 1916	7680																							
	1074		1st Half Paid MAY 20 1916	3864		537		537																			
			2nd Half Paid OCT 30 1916	8947																							
	1127		1st Half Paid MAY 31 1916	5750		564		563																			
			2nd Half Paid AUG 31 1916	7504																							
	1074		1st Half Paid FEB 15 1916	674		537		537																			
														19933													

Tax List of Real Property in the Town of May

Cass County, Minnesota, for Taxes of the Year 1915

IN WHOSE NAME ASSESSED	TO WHOM TRANSFERRED	Sold for Taxes	SUBDIVISION	Sec. or Lot	Town or Block	Reg.	No. of Acres		VALUATION		GENERAL TAXES		State School Bonds	State No. S.R.H. Dist.	SCHOOL DISTRICT		TOTAL TAXES	PAID	WHEN PAID	No. of Receipt	March Settlement	June Settlement	Penalty	November Settlement	Penalty	Collections to First Monday in January	Penalty	Delinquent on First Monday in January	REMARKS									
							Acres	100ths	Dollars	Mills	State	Mills			District No.	District Rate														\$	cts.	\$	cts.	\$	cts.	\$	cts.	\$
Footings Brought Forward,																																						
W. N. Parsons	Maggie M. Hodges	M. G. Millsbaugh	NE 1/4 of NE 1/4	12	133	31	40	180	1074	233							1307	X 4586 1st Half Paid	MAY 31 1916	2703		654							653									
R. Richmond	"	"	NW 1/4 of NE 1/4	"	"	"	40	180	1074	233							1307	Paid in Full	NOV 17 1916	10132							1307	131										
"	"	"	SW 1/4 of NE 1/4	"	"	"	40	180	1074	233							1307	Paid in Full	NOV 11 1916	10053							1307	131										
"	"	"	SE 1/4 of NE 1/4	"	"	"	40	180	1074	233							1307	1st Half Paid	MAY 31 1916	5405 5807		654						75	Paid subsequent to Cert. No. 3289									
Maggie M. Hodges	"	"	NE 1/4 of NW 1/4	"	"	"	40	196	1169								1169	Paid in Full	NOV 17 1916	10132							2469	247										
H. A. Wilson	Maggie M. Hodges	M. G. Millsbaugh	NW 1/4 of NW 1/4	"	"	"	40	218	1300								1300	Paid in Full	NOV 17 1916																			
"	"	"	SW 1/4 of NW 1/4	"	"	"	40	180	1074								1074	2nd Half Paid	OCT 31 1916	9838		537		537														
"	"	"	SE 1/4 of NW 1/4	"	"	"	40	188	1121								1121	1st Half Paid	MAY 31 1916	6367							1121	112										
John P. Jodgaard	H. A. Wilson	"	NE 1/4 of SW 1/4	"	"	"	40	200	1193								1193	Paid in Full	APR 24 1916	2874		1193																
"	"	"	NW 1/4 of SW 1/4	"	"	"	40	188	1121								1121	2nd Half Paid	OCT 31 1916																			
"	"	"	SW 1/4 of SW 1/4	"	"	"	40	188	1121								1121	1st Half Paid	MAY 31 1916	9838		1658		1658														
"	"	"	SE 1/4 of SW 1/4	"	"	"	40	180	1074								1074	2nd Half Paid	OCT 31 1916	6367																		
R. Richmond	"	"	NE 1/4 of SE 1/4	"	"	"	40	180	1074	233							1307	Paid in Full	NOV 11 1916	10053							1307	131										
"	"	"	NW 1/4 of SE 1/4	"	"	"	40	180	1074	233							1307	Paid in Full	JUN 28 1916																			
"	"	"	SW 1/4 of SE 1/4	"	"	"	40	187	1115	233							1348	Paid in Full	JUN 28 1916	7137						5653	1266											
Andrew Haggy	"	"	SE 1/4 of SE 1/4	"	"	"	40	180	1074	233							1307	2nd Half Paid	OCT 31 1916	9404		654																
"	"	"		"	"	"	40										1307	1st Half Paid	MAY 31 1916	5952																		
Footings Carried Forward,																																						
							640	2953	17806	1861					19670																							

Tax List of Real Property in the Town of May

Kimball-Storer Co., Minneapolis, Minn.—78055

IN WHOSE NAME ASSESSED	TO WHOM TRANSFERRED	Sold for Taxes	SUBDIVISION	Sec. or Lot	Town or Block	Rng.	No. of Acres Acres 100ths	VALUATION Dollars	GENERAL TAXES			Ditch No.
									State	County	Local	
Footings Brought Forward,												
G. A. Schumacker			NE 1/4 of NE 1/4				14 133 31 160	781				
"			NW 1/4 of NE 1/4									
"			SW 1/4 of NE 1/4									
"			SE 1/4 of NE 1/4									
Lewis W. Babb			NE 1/4 of NW 1/4	"	"	"	40	180				
Jane C. Donovan			NW 1/4 of NW 1/4	"	"	"	40	196				
"			SW 1/4 of NW 1/4	"	"	"	40	196				
Lewis W. Babb			SE 1/4 of NW 1/4	"	"	"	40	180				
G. H. Sliter			NE 1/4 of SW 1/4	"	"	"	40	180				
John Donovan			NW 1/4 of SW 1/4	"	"	"	40	196				
"			SW 1/4 of SW 1/4	"	"	"	40	390				
G. H. Sliter			SE 1/4 of SW 1/4	"	"	"	40	218				
G. A. Schumacker			NE 1/4 of SE 1/4	"	"	"	40	196				
"			NW 1/4 of SE 1/4	"	"	"	40	495				
A. S. Cole			SW 1/4 of SE 1/4	"	"	"	40	180				
G. A. Schumacker			SE 1/4 of SE 1/4	"	"	"	40	196				
Footings Carried Forward,							640	3584				

Cass County, Minnesota, for Taxes of the Year 1915

SCHOOL DISTRICT	TOTAL TAXES	PAID	WHEN PAID	No. of Receipt	March Settlement	June Settlement	Penalty	November Settlement	Penalty	Collections to First Monday in January	Penalty	Delinquent on First Monday in January	REMARKS
	4658		2nd Half Paid OCT 2 4 1916 1st Half Paid MAY 3 1 1916	8452 6573			2329		2329				
	1074		Bal Paid May 8 1917 1st Half Paid MAY 3 1 1916	5406 6508								1235	Paid subsequent to cert. no. 3290
	1169		Bal Paid May 8 1917 1st Half Paid MAY 3 1 1916	6508 5642			1169					584	
	1074			5407								585	
	1074		2nd Half Paid OCT 3 1 1916 1st Half Paid MAY 3 1 1916	9030 4935		537		537					
	1169		Bal Paid May 8 1917 1st Half Paid MAY 3 1 1916	6508 5642			1748					584	
	2326		Bal Paid May 8 1917 1st Half Paid MAY 3 1 1916	6508 9030								1163	
	1300		2nd Half Paid OCT 3 1 1916 1st Half Paid MAY 3 1 1916	9030 4935		650		650					
	1169		2nd Half Paid OCT 2 4 1916 1st Half Paid MAY 3 1 1916	8452 6573		2061		2060					
	2952		1st Half Paid MAY 3 1 1916 Paid Mar 28 1917	6573 6358									
	1074		1st Half Paid APR 1 7 1916 2nd Half Paid OCT 2 4 1916	2678 8452		587						537	
	1169		1st Half Paid MAY 3 1 1916	6573			584		585				
Footings Carried Forward,													21377

Tax List of Real Property in the Town of May

Kimball-Storer Co., Minneapolis, Minn.—78055

IN WHOSE NAME ASSESSED	TO WHOM TRANSFERRED	Sold for Taxes	SUBDIVISION	Sec. or Lot	Town or Block	Rng.	No. of Acres	GENERAL TAXES			State School Bonds	State No. Ditch
								VALUATION	Mills	Dollars		
Footings Brought Forward,												
Oscar A. Butler			NE 1/4 of NE 1/4	16	133	31	157	822	49	02		S.R.H.
"			NW 1/4 of NE 1/4									
"			SW 1/4 of NE 1/4									
"			SE 1/4 of NE 1/4									
			less 1 ac. - sch.									
Geo. Hix			NE 1/4 of NW 1/4	"	"	"	160	720	42	95		74
"			NW 1/4 of NW 1/4									74
"			SW 1/4 of NW 1/4									74
"			SE 1/4 of NW 1/4									74
Fred Hines			NE 1/4 of SW 1/4	"	"	"	39	34	179	106	2	74
Edward Brazier			NW 1/4 of SW 1/4	"	"	"	33	12	150	89	5	62
Fred Hines			SW 1/4 of SW 1/4	"	"	"	26	83	136	8	11	57
"			SE 1/4 of SW 1/4	"	"	"	26	28	126	7	51	53
			less R.R.									
Frank Seadlund			NE 1/4 of SE 1/4	"	"	"	80		360	21	47	
"			NW 1/4 of SE 1/4	"	"	"						
Curtis M. Broom			SW 1/4 of SE 1/4	"	"	"	34	15	154	9	18	
Clara J. Jones	J. E. Stewart		SE 1/4 of SE 1/4	"	"	"	40		180	10	74	
			less R.R.									
Footings Carried Forward,												
							898	72	2826	168	55	542

Cass County, Minnesota, for Taxes of the Year 1915

SCHOOL DISTRICT	TOTAL TAXES	PAID	WHEN PAID	No. of Receipt	March Settlement	June Settlement	Penalty	November Settlement	Penalty	Collections to First Monday in January	Penalty	Delinquent on First Monday in January	REMARKS
	4902	Paid in Full	OCT 31 1915	9828						4902/490			
	4591	2nd Half Paid	OCT 31 1916	9834									
		1st Half Paid	MAY 26 1916	4393		2295		2296					
	1136	2nd Half Paid	OCT 28 1916	8810		568		568					
		1st Half Paid	MAY 31 1916	6687									
	957	Paid	Jan 29 1917	5525								957	
	868	2nd Half Paid	OCT 28 1916	8810									
		1st Half Paid	MAY 31 1916	6687		434		434					
	804	2nd Half Paid	OCT 28 1916	8810									
		1st Half Paid	MAY 31 1916	6687		402		402					
	2147	2nd Half Paid	SEP 30 1916	7680									
		Paid in Full	MAY 20 1916	3864		1073		1074					
	918	Paid in Full	OCT 28 1916	8809						918		91	
		2nd Half Paid	OCT 16 1916	7990									
	1074	1st Half Paid	MAY 31 1916	6874		537		537					
Footings Carried Forward,													
							898	72	2826	168	55	542	17397

Tax List of Real Property in the Town of May

Kimball-Storer Co., Minneapolis, Minn.—78085

IN WHOSE NAME ASSESSED	TO WHOM TRANSFERRED	Sold for Taxes	SUBDIVISION	Sec. or Lot	Town or Block	No. of Acres	VALUATION	GENERAL TAXES				SCHOOL DISTRICT		TOTAL TAXES	PAID	WHEN PAID	No. of Receipt	March Settlement	June Settlement	Penalty	November Settlement	Penalty	Collections to First Monday in January	Penalty	Delinquent on First Monday in January	REMARKS	
								State	County	Local Sch.	Total	District No.	District Rate														
Footings Brought Forward,																											
Jos. A. Schumacher			NE 1/4 of NE 1/4	23	133	31	1/60	781																			
"			NW 1/4 of NE 1/4																								
"			SW 1/4 of NE 1/4																								
"			SE 1/4 of NE 1/4																								
Sherman W. Jacobs			NE 1/4 of NW 1/4	"	"	"	40	180																			
Edyth Donovan			NW 1/4 of NW 1/4	"	"	"	40	180																			
Chas. L. Peterson	13/15 + Lee C. Peterson 2/15		SW 1/4 of NW 1/4	"	"	"	40	180																			
"	do		SE 1/4 of NW 1/4	"	"	"	40	180																			
"	do		NE 1/4 of SW 1/4	"	"	"	56	254																			
"	do		NW 1/4 of SW 1/4	"	"	"	56	254																			
"	do		SW 1/4 of SW 1/4	"	"	"	39 1/4	179																			
"	do		SE 1/4 of SW 1/4	"	"	"	40	180																			
Jos. A. Schumacher			All No. Ry in SE 1/4	"	"	"	900	41																			
Martin W. Petreim			NE 1/4 of SE 1/4	"	"	"	111	76																			
"			NW 1/4 of SE 1/4	"	"	"	111	76																			
"			SW 1/4 of SE 1/4	"	"	"	111	76																			
"			SE 1/4 of SE 1/4	"	"	"	111	76																			
Chas. L. Peterson	13/15 + Lee C. Peterson 2/15		W. 8 1/2 rds. on W side SE 1/4	"	"	"		68																			
Footings Carried Forward,																											

576 07

Cass County, Minnesota, for Taxes of the Year 1915

District No.	District Rate	TOTAL TAXES	PAID	WHEN PAID	No. of Receipt	March Settlement	June Settlement	Penalty	November Settlement	Penalty	Collections to First Monday in January	Penalty	Delinquent on First Monday in January
		\$ cts.	\$ cts.	Month Day Year		\$ cts.	\$ cts.	\$ cts.	\$ cts.	\$ cts.	\$ cts.	\$ cts.	\$ cts.
		4658		2nd Half Paid OCT 24 1916 1st Half Paid MAY 31 1916	8452 6573		2329		2329				
		1074		2nd Half Paid OCT 31 1916 1st Half Paid MAY 31 1916	9837 6866		1074		1074				
		1074		Paid in Full FEB 22 1916									
		1074		Paid in Full FEB 22 1916	1004	2148							
		1515		Paid in Full FEB 22 1916	1004	1515							
		1068		Paid in Full FEB 22 1916									
		1074		Paid in Full FEB 22 1916	1004	2142							
		244		2nd Half Paid OCT 24 1916 1st Half Paid MAY 31 1916	8452 6573		122		122				
		3000		2nd Half Paid OCT 27 1916 1st Half Paid MAY 31 1916	8672 5609		1500		1500				
		405		Paid in Full FEB 22 1916	1004	405							

16260

Tax List of Real Property in the Town of May

Kimball-Storer Co., Minneapolis, Minn.—78055

IN WHOSE NAME ASSESSED	TO WHOM TRANSFERRED	Sold for Taxes	SUBDIVISION	Sec. or Lot	Town or Block	Rng.	No. of Acres		VALUATION	GENERAL TAXES			Ditch No.			
							Acres	100ths		State	Mills	State		School	Bonds	
									Dollars	\$	cts.	\$	cts.	\$	cts.	
Footings Brought Forward,																
Joe. Simpson			NE 1/4 of NE 1/4					134	31	160	720					
"			NW 1/4 of NE 1/4													
"			SW 1/4 of NE 1/4													
"			SE 1/4 of NE 1/4													
Peter Peterson			NE 1/4 of NW 1/4					"	"	160	720					
"			NW 1/4 of NW 1/4													
"			SW 1/4 of NW 1/4													
"			SE 1/4 of NW 1/4													
"			NE 1/4 of SW 1/4					"	"	160	720					
"			NW 1/4 of SW 1/4													
"			SW 1/4 of SW 1/4													
"			SE 1/4 of SW 1/4													
Joe. Simpson			NE 1/4 of SE 1/4					"	"	160	720					
"			NW 1/4 of SE 1/4													
"			SW 1/4 of SE 1/4													
"			SE 1/4 of SE 1/4													
Footings Carried Forward,																
							640		2380							

Cass County, Minnesota, for Taxes of the Year 1915

SCHOOL DISTRICT	TOTAL TAXES	PAID	WHEN PAID	No. of Receipt	March Settlement	June Settlement	Penalty	November Settlement	Penalty	Collections to First Monday in January	Penalty	Delinquent on First Monday in January	REMARKS					
														District No.	District No.	Rate	Rate	Mills
District No.	Rate	Mills	Month	Day	Year	\$	cts.	\$	cts.	\$	cts.	\$	cts.	\$	cts.	\$	cts.	
	4295													4860				4295
Paid in Full MAY 31 1916																		
	4295													4860				4295
2nd Half Paid OCT 31 1916																		
1st Half Paid MAY 31 1916																		
	4492													6904				4295
4295																		
	4295													4860				4295
Paid in Full MAY 31 1916																		
Footings																		
17180																		

Tax List of Real Property in the Town of May

Kimball-Storer Co., Minneapolis, Minn. - 78095

IN WHOSE NAME ASSESSED	TO WHOM TRANSFERRED	Sold for Taxes	SUBDIVISION	Sec. Lot	Town or Rng. Block	No. of Acres		VALUATION	GENERAL TAXES			Ditch No.			
						Acres	100ths		State	Mills	State				
									State Sch. County	State School Bonds					
									Total						
									Dollars	\$	cts.	\$	cts.	\$	cts.
Footings Brought Forward,															
Ernest Peterson S. N. Jacobs Horace Huron			NE 1/4 of NE 1/4			10	43	140	180						
			NW 1/4 of NE 1/4			"	"	40	180						
			SW 1/4 of NE 1/4			"	"	40	283						
			SE 1/4 of NE 1/4			"	"	40	189						
Nels Peterson			NE 1/4 of NW 1/4			"	"	160	203						
			NW 1/4 of NW 1/4			"	"		180						
			SW 1/4 of NW 1/4			"	"		180						
			SE 1/4 of NW 1/4			"	"		216						
Ernest Peterson C. F. Walblow			NE 1/4 of SW 1/4			"	"	40	165						
			NW 1/4 of SW 1/4			"	"	40	165						
			SW 1/4 of SW 1/4			"	"	40	331						
			SE 1/4 of SW 1/4			"	"	40	180						
Ernest Peterson			NE 1/4 of SE 1/4			"	"	40	204						
A. Sandusky Clifford S. Green Ernest Peterson			NW 1/4 of SE 1/4			"	"	40	180						
			SW 1/4 of SE 1/4			"	"	40	180						
			SE 1/4 of SE 1/4			"	"	40	201						
Footings Carried Forward,						640			3217						

Cass County, Minnesota, for Taxes of the Year 1915

SCHOOL DISTRICT	TOTAL TAXES	PAID	WHEN PAID	No. of Receipt	March Settlement	June Settlement	Penalty	November Settlement	Penalty	Collections to First Monday in January	Penalty	Delinquent on First Monday in January	REMARKS	
														District No.
District No.	Rate													
Mills	Mills				\$	cts.	\$	cts.	\$	cts.	\$	cts.	\$	cts.
					\$	cts.	\$	cts.	\$	cts.	\$	cts.	\$	cts.
1074		Paid in Full	MAY 31 1916	6177										
		2nd Half Paid	OCT 31 1916	9837										
1074		1st Half Paid	MAY 31 1916	6866										
		2nd Half Paid	OCT 31 1916											
1687		1st Half Paid	MAY 31 1916	4697										
		2nd Half Paid	OCT 31 1916											
1127		1st Half Paid	MAY 31 1916	4115										
		2nd Half Paid	OCT 31 1916											
1210		1st Half Paid	MAY 15 1916	8139										
		2nd Half Paid	OCT 9 1916											
1074		1st Half Paid	MAY 15 1916	3476										
		2nd Half Paid	OCT 9 1916											
1074		1st Half Paid	MAY 15 1916											
		2nd Half Paid	OCT 9 1916											
1288		1st Half Paid	MAY 15 1916											
		2nd Half Paid	OCT 9 1916											
984		Paid in Full	MAY 31 1916	6177										
		2nd Half Paid	OCT 23 1916	8294										
984		1st Half Paid	MAY 31 1916	6278										
		2nd Half Paid	OCT 23 1916	8294										
1974		1st Half Paid	MAY 31 1916	6278										
		2nd Half Paid	OCT 23 1916											
1074		Paid in Full	MAY 31 1916	6177										
		2nd Half Paid	OCT 31 1916	9688										
1216		1st Half Paid	MAY 31 1916	6632										
		2nd Half Paid	OCT 31 1916											
1074		Paid in Full	MAY 31 1916											
		2nd Half Paid	OCT 31 1916	6177										
1074		1st Half Paid	MAY 31 1916	6177										
		2nd Half Paid	OCT 31 1916	9688										
1198		1st Half Paid	MAY 31 1916	6632										
		2nd Half Paid	OCT 31 1916											
19186														

Tax List of Real Property in the Town of May

Kimball-Storer Co., Minneapolis, Minn. - 78055

IN WHOSE NAME ASSESSED	TO WHOM TRANSFERRED	Sold for Taxes	SUBDIVISION	Sec. or Lot	Town or Block	Rng.	No. of Acres		VALUATION	GENERAL TAXES			Ditch No.		
							Acres	100ths		State	County	Local		State	School
									Dollars	\$	cts.	\$	cts.	\$	cts.
Footings Brought Forward,															
Ed. Bolton	Gaut M. Bigelow		NE 1/4 of NE 1/4	13	134	31	40		180						
E. E. Lindsley		NW 1/4 of NE 1/4	"	"	"	40		180							
John H. Brewer		SW 1/4 of NE 1/4	"	"	"	80		399							
"		SE 1/4 of NE 1/4	"	"	"	80		399							
Chas. Brinkman			NE 1/4 of NW 1/4	"	"	"	40		206						
J. R. Mannin		NW 1/4 of NW 1/4	"	"	"	40		169							
O. Rogers		SW 1/4 of NW 1/4	"	"	"	40		210							
Chas. Brinkman		SE 1/4 of NW 1/4	"	"	"	40		169							
J. M. Schmidt			NE 1/4 of SW 1/4	"	"	"	40		206						
A. R. Mannin		NW 1/4 of SW 1/4	"	"	"	40		232							
J. M. Schmidt		SW 1/4 of SW 1/4	"	"	"	40		206							
"		SE 1/4 of SW 1/4	"	"	"	40		169							
H. H. Swain			NE 1/4 of SE 1/4	"	"	"	40		180						
"		NW 1/4 of SE 1/4	"	"	"	40		191							
Chris Kidman		SW 1/4 of SE 1/4	"	"	"	40		180							
"		SE 1/4 of SE 1/4	"	"	"	40		180							
							Footings Carried Forward,			640		3057			

Cass County, Minnesota, for Taxes of the Year 1915

SCHOOL DISTRICT		TOTAL TAXES	PAID	WHEN PAID	No. of Receipt	March Settlement	June Settlement	Penalty	November Settlement	Penalty	Collections to First Monday in January	Penalty	Delinquent on First Monday in January	REMARKS		
District No.	District No.															
Rate	Rate	\$	cts.	Month	Day	Year	\$	cts.	\$	cts.	\$	cts.	\$	cts.	\$	cts.
		1074		Paid in Full	JAN 1 2	1916	53									
		1074		Paid in Full	MAY 23	1916	4029		1074							
		2380					5410								2737 Paid subsequent to Cert. No. 3307	
		1228		2nd Half Paid	OCT 20	1916	8152									
		1008		1st Half Paid	MAY 6	1916	3149		614		614					
		1263		2nd Half Paid	OCT 20	1916	8152									
		1008		1st Half Paid	MAY 6	1916	3149		504		504				627	
		1228		2nd Half Paid	OCT 23	1916	8296									
		1383		1st Half Paid	MAY 31	1916	6524		614		614					
		1228		2nd Half Paid	OCT 23	1916	8296									
		1008		1st Half Paid	MAY 31	1916	6524		1118		1118					
		1074		Paid in Full	OCT 28	1916	8805									
		1139		Paid in Full	OCT 28	1916					2213		221			
		1074		2nd Half Paid	OCT 4	1916										
		1074		1st Half Paid	MAY 31	1916	7781									
		1074		2nd Half Paid	OCT 4	1916										
		1074		1st Half Paid	MAY 31	1916	6874		1074		1074					
		18233														

Tax List of Real Property in the Town of May

Kimball-Storer Co., Minneapolis, Minn. - 78065

IN WHOSE NAME ASSESSED	TO WHOM TRANSFERRED	Sold for Taxes	SUBDIVISION	Sec. or Lot	Town or Block	Rng.	No. of Acres	VALUATION	GENERAL TAXES				Ditch No.	
									State	County	Town	Total		
								Dollars	\$	cts.	\$	cts.	\$	cts.
			Footings Brought Forward,											
J. Harris			NE 1/4 of NE 1/4	16	34	31	160	720						
"			NW 1/4 of NE 1/4											
"			SW 1/4 of NE 1/4											
"			SE 1/4 of NE 1/4											
Clem Thompson			NE 1/4 of NW 1/4	"	"	"	160	720						
"			NW 1/4 of NW 1/4											
"			SW 1/4 of NW 1/4											
"			SE 1/4 of NW 1/4											
"			NE 1/4 of SW 1/4	"	"	"	160	720						
"			NW 1/4 of SW 1/4											
"			SW 1/4 of SW 1/4											
"			SE 1/4 of SW 1/4											
J. Harris			NE 1/4 of SE 1/4	"	"	"	160	720						
"			NW 1/4 of SE 1/4											
"			SW 1/4 of SE 1/4											
"			SE 1/4 of SE 1/4											
			Footings Carried Forward,											
				640			2880							

Cass County, Minnesota, for Taxes of the Year 1915

SCHOOL DISTRICT		TOTAL TAXES	PAID	WHEN PAID	No. of Receipt	March Settlement	June Settlement	Penalty	November Settlement	Penalty	Collections to First Monday in January	Penalty	Delinquent on First Monday in January	REMARKS		
District No.	District Rate															
		\$	cts.	Month	Day	Year	\$	cts.	\$	cts.	\$	cts.	\$	cts.	\$	cts.
		4295		PAID in Full	MAY 3	1916	3075				4295					
		4295		2nd Half Paid	OCT 10	1916										
		4295		1st Half Paid	MAY 16	1916										
							11881									
							3623				4295		4295			
		4295		2nd Half Paid	OCT 10	1916										
		4295		1st Half Paid	MAY 16	1916										
		4295		PAID in Full	MAY 3	1916	3075				4295					
		17180														

Tax List of Real Property in the Town of May

Kimball-Storer Co., Minneapolis, Minn. 78055

IN WHOSE NAME ASSESSED	TO WHOM TRANSFERRED	Sold for Taxes	SUBDIVISION	Sec. or Lot	Town or Block	Rng.	No. of Acres		VALUATION	GENERAL TAXES			S. R. H. Ditch No.		
							Acres	100ths		State	County	Local		Mills	State
									Dollars	\$	cts.	\$	cts.	\$	cts.
Footings Brought Forward,															
H.P. Peterson	M.C. Petersen		NE 1/4 of NE 1/4		19	34	31	160	720	42	95		112		
"	"		NW 1/4 of NE 1/4										112		
"	"		SW 1/4 of NE 1/4										112		
"	"		SE 1/4 of NE 1/4										112		
Ingal Goplen			Lots 3-4-5-6				14	488	863	4	78		535		
H. Dennis	Peter Peterson		NE 1/4 of NW 1/4	"	"	"	40	210	1	253		149			
"	"		NW 1/4 of NW 1/4	"	"	"	40	230	1	372		149			
Hans O. Straughan			SW 1/4 of NW 1/4	"	"	"	40	180	1	074		149			
H. Dennis	Peter Peterson		SE 1/4 of NW 1/4	"	"	"	40	180	1	074		149			
Palmer Goplen			"	"	"	"	40	180	1	074		149			
H. C. Schlueter			"	"	"	"	40	180	1	074		149			
Hans O. Straughan			"	"	"	"	40	180	1	074		149			
H. C. Schlueter			"	"	"	"	40	180	1	074		149			
"			"	"	"	"	40	180	1	074		149			
The John P. Snyder Co.			NE 1/4 of SE 1/4				160	720	42	95		112			
"			NW 1/4 of SE 1/4									112			
"			SW 1/4 of SE 1/4									112			
"			SE 1/4 of SE 1/4									112			
Footings Carried Forward,															
							934	76	47	58	28	56	31	93	

Cass County, Minnesota, for Taxes of the Year 1915

SCHOOL DISTRICT		TOTAL TAXES	PAID	WHEN PAID	No. of Receipt	March Settlement	June Settlement	Penalty	November Settlement	Penalty	Collections to First Monday in January	Penalty	Delinquent on First Monday in January	REMARKS				
District No.	District Rate																	
\$	cts.	\$	cts.	Month	Day	Year	\$	cts.	\$	cts.	\$	cts.	\$	cts.	\$	cts.		
		47	43	Paid in Full	SEP	9	1916	73	34					47	43	✓		
12		53	24				48	83								53	24	
12		14	02	Paid in full	MAR	10	1916											
12		15	21	Paid in full	MAR	10	1916	2	139					2	923			
12		12	23	Is Half Paid	MAY	2	1915	3	053					6	12	6	11	
12		12	23	Paid in full	MAR	10	1916	2	139					12	23			
12		54	91	2nd Half Paid	OCT	31	1916	7	564									
12		66	84	Is Half Paid	MAY	31	1916	6	353					2	746	2	745	
12		12	23	Paid in Full	APR	12	1916	2	591					12	23			
12		12	23	Is Half Paid	MAY	2	1915	3	053					6	11		6	12
12		12	23	Paid in Full	APR	12	1916	2	591					2	446			
12		12	23	Paid in Full	APR	12	1916	2	591									
		47	43				48	86								11	86	
							48	87									11	86
							48	88									11	86
							48	89									11	85
Footings Carried Forward,																		
		31	75															

Tax List of Real Property in the Town of May

Kimball-Storer Co., Minneapolis, Minn. 74065

IN WHOSE NAME ASSESSED	TO WHOM TRANSFERRED	Sold for Taxes	SUBDIVISION	No. of Acres		VALUATION	GENERAL TAXES			Ditch No.
				Acres	100ths		State	County	Local	
Sec. or Lot	Town or Block	Rng.				Dollars	Mills	State School Bonds		
Footings Brought Forward,										
L.A. Ingebritson			NE 1/4 of NE 1/4	21	31	80	403			
"			NW 1/4 of NE 1/4							
C. Anderson			SW 1/4 of NE 1/4	"	"	80	495			
"			SE 1/4 of NE 1/4							
F.T. Capers			NE 1/4 of NW 1/4	"	"	160	180			
"			NW 1/4 of NW 1/4				180			
"			SW 1/4 of NW 1/4				180			
"			SE 1/4 of NW 1/4				180			
B.L. Burch			NE 1/4 of SW 1/4	"	"	40	180			
"			NW 1/4 of SW 1/4	"	"	40	180			
"			SW 1/4 of SW 1/4	"	"	40	180			
John C. Martin			SE 1/4 of SW 1/4	"	"	40	180			
E.M. Pety			NE 1/4 of SE 1/4	"	"	40	203			
"			NW 1/4 of SE 1/4	"	"	40	218			
John C. Martin			SW 1/4 of SE 1/4	"	"	40	180			
Mary J. Williams			SE 1/4 of SE 1/4	"	"	40	300			
Footings Carried Forward,										
				640		3239				

Cass County, Minnesota, for Taxes of the Year 1915

SCHOOL DISTRICT		TOTAL TAXES	PAID	WHEN PAID	No. of Receipt	March Settlement	June Settlement	Penalty	November Settlement	Penalty	Collections to First Monday in January	Penalty	Delinquent on First Monday in January	REMARKS					
District No.	District Rate																		
\$	cts.	\$	cts.	Month	Day	Year	\$	cts.	\$	cts.	\$	cts.	\$	cts.	\$	cts.	\$	cts.	
		2404																	276 Paid subsequent to Cert. No. 3310
		2952		2nd Half Paid	OCT 23	1916	8331												
				1st Half Paid	MAY 30	1916	4743		1476		1476								
		1074		2nd Half Paid	OCT 30	1916													
				1st Half Paid	MAY 31	1916													
		1074		2nd Half Paid	OCT 30	1916													
				1st Half Paid	MAY 31	1916	8905												
		1074		2nd Half Paid	OCT 30	1916													
				1st Half Paid	MAY 31	1916	5892		2148		2148								
		1074		2nd Half Paid	OCT 30	1916													
				1st Half Paid	MAY 31	1916													
		1074		Paid in Full		MAY 31 1916													
		1074		Paid in Full		MAY 31 1916	5105		3222										
		1074		Paid in Full		MAY 31 1916													
				2nd Half Paid	OCT 31	1916	9690												
				1st Half Paid	MAY 31	1916	5639		537		537								
		1210		Paid in Full		OCT 31 1916	9395				2511		251						
		1300		Paid in Full		OCT 31 1916													
				2nd Half Paid	OCT 31	1916	9690												
				1st Half Paid	MAY 31	1916	5639		537		537								
		1790		Paid in Full		OCT 31 1916	9862				1790		179						
		19320																	

Tax List of Real Property in the Town of May

Kimball-Storer Co., Minneapolis, Minn. - 78055

IN WHOSE NAME ASSESSED	TO WHOM TRANSFERRED	Sold for Taxes	SUBDIVISION	Sec. or Lot	Town or Block	Rng.	No. of Acres	VALUATION	GENERAL TAXES			Ditch No.				
									State	County	Local					
									Dollars	\$	cts.	\$	cts.	\$	cts.	
Footings Brought Forward,																
Carl Dehne			NE 1/4 of NE 1/4	1	27	13431	40	189								
"			NW 1/4 of NE 1/4	"	"	"	40	216								
Ellsworth & Jones			SW 1/4 of NE 1/4	"	"	"	40	180								
"			SE 1/4 of NE 1/4	"	"	"	40	180								
Wm. Strube			NE 1/4 of NW 1/4	"	"	"	40	180								
"			NW 1/4 of NW 1/4	"	"	"	40	180								
P. M. Loggin	Jacob Wendt		SW 1/4 of NW 1/4	"	"	"	40	210								
"			SE 1/4 of NW 1/4	"	"	"	40	180								
Wm. Norby			NE 1/4 of SW 1/4	"	"	"	40	180								
"			NW 1/4 of SW 1/4	"	"	"	40	198								
S. Swanson			SW 1/4 of SW 1/4	"	"	"	40	233								
Louis Williams			SE 1/4 of SW 1/4	"	"	"	40	180								
August Raddue's & Clara Nung 2/3			NE 1/4 of SE 1/4	"	"	"	40	180								
do			NW 1/4 of SE 1/4	"	"	"	40	180								
Louis Williams			SW 1/4 of SE 1/4	"	"	"	40	180								
August Raddue			SE 1/4 of SE 1/4	"	"	"	40	180								
Footings Carried Forward,							640	3026								

Cass County, Minnesota, for Taxes of the Year 1915

SCHOOL DISTRICT		TOTAL TAXES	PAID	WHEN PAID	No. of Receipt	March Settlement	June Settlement	Penalty	November Settlement	Penalty	Collections to First Monday in January	Penalty	Delinquent on First Monday in January	REMARKS		
District No.	District Rate															
\$	cts.	\$	cts.	Month	Day	Year	\$	cts.	\$	cts.	\$	cts.	\$	cts.	\$	cts.
		1127		SEP 22		1916										
		1288		SEP 22		1916					2415	241				
		1074		MAY 8		1916										
		1074		MAY 8		1916										
		1074		OCT 26		1916										
		1074		OCT 26		1916					2148	215				
		1253		MAY 8		1916										
		1074		MAY 8		1916										
		1074		MAY 27		1916										
		1181		MAY 27		1916					2255					
		1389		MAY 31		1916					695	695				
		1074														
		1074		MAY 31		1916										
		1074		MAY 31		1916					2148					
		1074														
		1074		MAY 31		1916										
		1074		MAY 31		1916										
		1074		MAY 31		1916										
		18050														

1234 Paid subsequent to Cert. No. 3319

1234 Paid subsequent to Cert. No. 3320

Tax List of Real Property in the Town of May

Kimball-Storer Co., Minneapolis, Minn.—78055

IN WHOSE NAME ASSESSED	TO WHOM TRANSFERRED	Sold for Taxes	SUBDIVISION	Sec. or Lot	Town or Block	Rng.	No. of Acres		VALUATION	GENERAL TAXES			S. R. H. Dist. No.			
							Acres	100ths		State	County	Mills				
										Dollars	\$	cts.	\$	cts.	\$	cts.
Footings Brought Forward,																
Ben Schnackenberg			NE 1/4 of NE 1/4						720	4295		149				
"			NW 1/4 of NE 1/4								149					
"			SW 1/4 of NE 1/4								149					
"			SE 1/4 of NE 1/4								149					
Arthur S. Chase	Jas. Francisco		Lot 3-4-5-6				155	16	699	4169		577				
G. A. Lindbergh			NE 1/4 of NW 1/4					160	720	4295		595				
"			NW 1/4 of NW 1/4													
"			SW 1/4 of NW 1/4													
"			SE 1/4 of NW 1/4													
Thos. Loggin			" 13-14					76	342	2039		264				
G. W. Thayer			NE 1/4 of SW 1/4					160	720	4295		595				
"			NW 1/4 of SW 1/4													
"			SW 1/4 of SW 1/4													
"			SE 1/4 of SW 1/4													
F. V. Chase			" 11-12					76	350	2088		264				
G. W. Thayer			NE 1/4 of SE 1/4					160	720	4295		149				
"			NW 1/4 of SE 1/4								149					
"			SW 1/4 of SE 1/4								149					
"			SE 1/4 of SE 1/4								149					
Footings Carried Forward,																
							94768		4271	25476		3487				

Cass County, Minnesota, for Taxes of the Year 1915

SCHOOL DISTRICT	TOTAL TAXES	PAID	WHEN PAID	No. of Receipt	March Settlement	June Settlement	Penalty	November Settlement	Penalty	Collections to First Monday in January	Penalty	Delinquent on First Monday in January	REMARKS
\$	cts.	\$	cts.	\$	cts.	\$	cts.	\$	cts.	\$	cts.	\$	cts.
				Month	Day	Year							
	4891												PAID in Full MAY 31 1916 4968
													4891
	4746												2nd Half Paid OCT 31 1916 9837 1st Half Paid MAY 31 1916 6866
													2373
	4890												PAID in Full MAY 31 1916 4851
													4890
	2303												2nd Half Paid OCT 27 1916 8468 1st Half Paid MAY 18 1916 3750
													1152
	4890												PAID in Full MAY 31 1916 4851
													4890
	2352												2nd Half Paid DEC 27 1916 10343 1st Half Paid MAY 31 1916 5738
													1176
	4891												PAID in Full MAY 31 1916 4851
													4891
													1176
													118
Footings Carried Forward,													
28963													

