

ASSESSMENT BOOKS

1930

May Township

THE FRITZ-CROSS CO., ST. CLOUD, MINN.

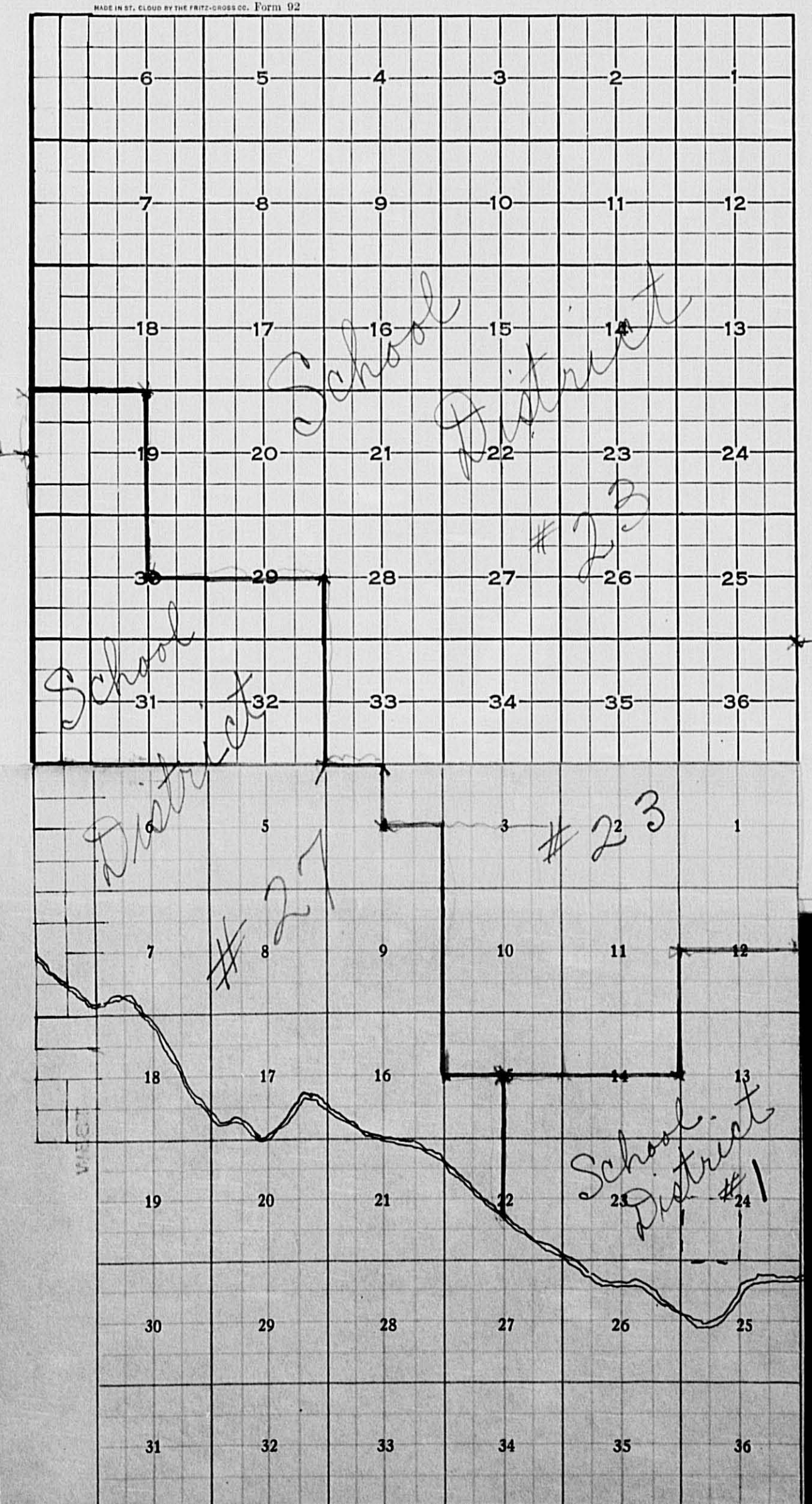
INDEX TO SECTIONS

SECTION PAGE

Section 1	
" 2	
" 3	
" 4	
" 5	
" 6	
" 7	
" 8	
" 9	
" 10	
" 11	
" 12	
" 13	
" 14	
" 15	
" 16	
" 17	
" 18	
" 19	
" 20	
" 21	
" 22	
" 23	
" 24	
" 25	
" 26	
" 27	
" 28	
" 29	
" 30	
" 31	
" 32	
" 33	
" 34	
" 35	
" 36	

For Convenience of Auditor in Showing Boundaries of School Districts

Township No. 134 Range No. 31 and part of Twp 133-R.31
Mer. P. M.



T. 134

T. 133

Dally SW 1/4 of 20-134-30
by special order in Dist 24

MAY TOWNSHIP
 PERCENTAGE INCREASES AND
 DECREASES MADE BY COUNTY BOARD
 AND STATE TAX COMMISSION ON
 1928 ASSESSMENT

County Board:
 Unplatted
 14% Inc. on Lands
 8% Inc. on Structures

Tax Commission:
 NONE

Assessor's Return of Taxable Real Property in the Town of May, County of Cass, Minn., for the Year 1930.

Unplatted Real Estate—Assessed at 33 1-3 per cent of True and Full Value.

NAME OF OWNER	No. of School Dist.	DESCRIPTION	Sec. or Lot	Twp. or Block	Range	Number of Acres	True and Full Value of Lands Exclusive of Structures and Improvements Dollars	ASSESSOR'S VALUATION		County Board Changes.	Tax Commission Changes.	VALUATIONS	
								True and Full Value of Buildings and Other Structures Dollars	True and Full Value of Machinery Permanently Attached to Real Estate Dollars			Value as Equalized by the County Board	Assessed Value as Equalized by the Minnesota Tax Commission
St. Paul & Chicago Ry Co.		NE 1/4 of NE 1/4	1	133	31	40	541.600						
Mrs Mary E. Waldron		NW 1/4 of NE 1/4				40	541.600						180
"		SW 1/4 of NE 1/4				40	541.600						180
St. Paul & Chicago Ry Co.		SE 1/4 of NE 1/4				40	541.600						180
Mrs Mary E. Waldron		NE 1/4 of NW 1/4				40	541.600						180
"		NW 1/4 of NW 1/4				40	541.600			541.600	200		180
"		SW 1/4 of NW 1/4				40	541.600			541.600	200		180
"		SE 1/4 of NW 1/4				40	541.600			541.600	200		180
"		NE 1/4 of SW 1/4				40	541.600			541.600	200		180
"		NW 1/4 of SW 1/4				40	541.600			541.600	200		180
"		SW 1/4 of SW 1/4				40	541.600			541.600	200		180
"		SE 1/4 of SW 1/4				40	541.600			541.600	200		180
"		NE 1/4 of SE 1/4				40	541.600			541.600	200		180
"		NW 1/4 of SE 1/4				40	541.600			541.600	200		180
"		SW 1/4 of SE 1/4				40	541.600			541.600	200		180
"		SE 1/4 of SE 1/4				40	541.600			541.600	200		180
						640	9600			9600	3200		2880
							8656			8656			2855
							8659						

MAY TWP.
 County Board Changes.
 Unplatted
 Lands - 18% Dec.
 Buildings and Structures -
 19% Dec. - 1911 ✓
 Tax Commission Changes.
 Platted and Unplatted
 Lands including Buildings,
 Structures and Machinery.
 10% Inc.

Value as Equalized by the County Board
 Assessed Value as Equalized by the Minnesota Tax Commission

PERSONAL

MAY TOWNSHIP

PERCENTAGE INCREASES AND DECREASES MADE BY COUNTY BOARD AND STATE TAX COMMISSION ON 1928 ASSESSMENT

County Board:
Unplatted
14% Inc. on Lands
8% Inc. on Structures

Tax Commission:
NONE

Assessor's Return of Taxable Real Property in the Town of May, County of _____, 1930.

Unplatted Real Estate—Assessed at 33 1-3 per cent of True and Full Value.

NAME OF OWNER	No. of School Dist.	DESCRIPTION	Number of Acres		True and Full Value of Lands Exclusive of Structures and Improvements Dollars	ASSESSOR'S VALUATION		Lands Including Structures, Improvements and Machinery Dollars	or Lands Including all Structures, Improvements and Machinery Dollars	as Equalized by Board of Review Dollars	VALUATIONS	
			Acres	100ths		True and Full Value of Buildings and Other Structures Dollars	True and Full Value of Machinery Permanently Attached to Real Estate Dollars				Assessed Value as Equalized by the County Board Dollars	Assessed Value as Equalized by the Minnesota Tax Commission Dollars
St. Paul & Chicago Ry Co.		NE 1/4 of NE 1/4	40		541 600		541 600					180
Mrs Mary E. Waldron		NW 1/4 of NE 1/4	40		541 600		541 600		200			180
"		SW 1/4 of NE 1/4	40		541 600		541 600		200			180
St Paul & Chicago Ry Co.		SE 1/4 of NE 1/4	40		541 600		541 600		200			180
Mrs Mary E. Waldron		NE 1/4 of NW 1/4	40		541 600		541 600		200			180
"		NW 1/4 of NW 1/4	40		541 600		541 600		200			180
"		SW 1/4 of NW 1/4	40		541 600		541 600		200			180
"		SE 1/4 of NW 1/4	40		541 600		541 600		200			180
"		NE 1/4 of SW 1/4	40		541 600		541 600		200			180
"		NW 1/4 of SW 1/4	40		541 600		541 600		200			180
"		SW 1/4 of SW 1/4	40		541 600		541 600		200			180
"		SE 1/4 of SW 1/4	40		541 600		541 600		200			180
"		NE 1/4 of SE 1/4	40		541 600		541 600		200			180
"		NW 1/4 of SE 1/4	40		541 600		541 600		200			180
"		SW 1/4 of SE 1/4	40		541 600		541 600		200			180
"		SE 1/4 of SE 1/4	40		541 600		541 600		200			180
			640		9600		9600		3200			7880
					8656		8656					2885
					8659							

2 Assessor's Return of Taxable Real Property in the Town of May, County of Cass, Minn., for the Year 1930.

Unplatted Real Estate—Assessed at 33 1-3 per cent of True and Full Value.

NAME OF OWNER	No. of School Dist.	DESCRIPTION	ASSESSOR'S VALUATIONS					EQUALIZED VALUATIONS					
			Sec. or Lot	Twp. or Block	Range	Number of Acres	True and Full Value of Lands Exclusive of Structures and Improvements	STRUCTURES AND IMPROVEMENTS True and Full Value of Buildings and Other Structures	Value of Machinery Permanently Attached to Real Estate	Total True and Full Value of Lands Including all Structures, Improvements and Machinery	Assessed Value Including all Structures, Improvements and Machinery	Assessed Value as Equalized by Board of Review	Assessed Value as Equalized by the County Board
Samuel Nix		NE 1/4 of NE 1/4	2	133	31	38	19387.429		387429	443			129
"		NW 1/4 of NE 1/4				37	15587.651		587651	217			196
"		SW 1/4 of NE 1/4				40	636705.358402		994107	369			331
"		SE 1/4 of NE 1/4				40	498.552		498552	184			166
N. J. Ritter		NE 1/4 of NW 1/4				37	51417462.8899		505561	187			168
J. C. Nix		NW 1/4 of NW 1/4				37	17430477		430477	159			143
Geo E Brown		SW 1/4 of NW 1/4				40	677750.401450		10781200	400			389
"		SE 1/4 of NW 1/4				40	433480		433480	160			144
"		NE 1/4 of SW 1/4				40	717795		717795	265			239
"		NW 1/4 of SW 1/4				40	468519		468519	173			156
Geo W Mosher		SW 1/4 of SW 1/4				40	541600		541600	200			180
Geo E Brown		SE 1/4 of SW 1/4				40	717795.508570		12251365	405			408
Eustace A Hard		NE 1/4 of SE 1/4				40	433480		433480	160			144
"		NW 1/4 of SE 1/4				40	487540		487540	180			162
C. E. Knutson		SW 1/4 of SE 1/4				40	636705.267300		9031005	335			301
"		SE 1/4 of SE 1/4				40	514570		514570	190			171
						63072	9510	1821	11331	3777			3397
							8578	1622	10200				3400
							8578	1623					

3 Assessor's Return of Taxable Real Property in the Town of May, County of Cass, Minn., for the Year 1930.

Unplatted Real Estate—Assessed at 33 1-3 per cent of True and Full Value.

NAME OF OWNER	No. of School Dist.	DESCRIPTION	ASSESSOR'S VALUATIONS					EQUALIZED VALUATIONS					
			Sec. or Lot	Twp. or Block	Range	Number of Acres	True and Full Value of Lands Exclusive of Structures and Improvements	STRUCTURES AND IMPROVEMENTS True and Full Value of Buildings and Other Structures	Value of Machinery Permanently Attached to Real Estate	Total True and Full Value of Lands Including all Structures, Improvements and Machinery	Assessed Value Including all Structures, Improvements and Machinery	Assessed Value as Equalized by Board of Review	Assessed Value as Equalized by the County Board
Richard G. Nicks		NE 1/4 of NE 1/4 Lot 1	3	133	31	3690	471522		471522	174			157
Andrew Roswald		NW 1/4 of NE 1/4				3670	471522	97	471522	124			137
John M Schmit		SW 1/4 of NE 1/4				40	471522		471522	174			157
Richard C. Nicks		SE 1/4 of NE 1/4				40	530588	88 99	618689	229			206
Robert Leich		NE 1/4 of NW 1/4				3650	530588		530588	196			177
Clifford Garner		NW 1/4 of NW 1/4				3630	570654		570654	218			197
Chas W. C. Reeve		SW 1/4 of NW 1/4				40	487540		487540	180			162
"		SE 1/4 of NW 1/4				40	433480		433480	160			144
N. E. Finn		NE 1/4 of SW 1/4				40	541600		541600	200			180
Geo E Hall		NW 1/4 of SW 1/4				40	541600		541600	200			180
"		SW 1/4 of SW 1/4				40	568630		568630	210			189
N. E. Finn		SE 1/4 of SW 1/4				40	541600		541600	200			180
Geo Norden		NE 1/4 of SE 1/4				40	525582		525582	194			175
N. E. Finn		NW 1/4 of SE 1/4				40	541600		541600	200			180
"		SW 1/4 of SE 1/4				40	541600		541600	200			180
Geo Norden		SE 1/4 of SE 1/4				40	482534/55174		637708	236			212
						62640	9162	273	9435	3145			2833
							8763	243	8506				2835
							8764	243					

4 Assessor's Return of Taxable Real Property in the Town of May, County of Cass, Minn., for the Year 1930.

Unplatted Real Estate—Assessed at 33 1-3 per cent of True and Full Value.

NAME OF OWNER	No. of School Dist.	DESCRIPTION	ASSESSOR'S VALUATIONS					EQUALIZED VALUATIONS				
			Sec. or Lot	Twp. or Block	Range	Number of Acres	True and Full Value of Land Exclusive of Structures and Improvements	STRUCTURES AND IMPROVEMENTS True and Full Value of Buildings and Other Structures	True and Full Value of Machinery Permanently Attached to Real Estate	Total True and Full Value of Land Including all Structures, Improvements and Machinery	Assessed Value of Land Including all Structures, Improvements and Machinery	Assessed Value as Equalized by Board of Review
Rasmus Olson		NE 1/4 of NE 1/4	4	133	31	36 13	622 690	904 790	1326 1480	493 1		442
"		NW 1/4 of NE 1/4				35 99	390 432		390 432	144		130
"		SW 1/4 of NE 1/4				40	433 480		433 480	160		144
"		SE 1/4 of NE 1/4				40	555 615		555 615	205		185
Robert Leith		NE 1/4 of NW 1/4				35 85	398 1141		398 1141	147		133
"		NW 1/4 of NW 1/4				35 71	563 624		563 624	208		188
"		SW 1/4 of NW 1/4				40	555 615	441 495	996 1110	370		332
"		SE 1/4 of NW 1/4				40	266 295		266 295	98		89
Ira R Felton		NE 1/4 of SW 1/4				40	244 270		244 270	90		81
"		NW 1/4 of SW 1/4				40	595 660		595 660	220		198
"		SW 1/4 of SW 1/4				40	579 642	388 435	967 1077	359		322
"		SE 1/4 of SW 1/4				40	465 516		465 516	172		155
Geo Hall		NE 1/4 of SE 1/4				40	717 775		717 775	265		239
"		NW 1/4 of SE 1/4				40	379 420		379 420	140		126
"		SW 1/4 of SE 1/4				40	271 300		271 300	100		90
"		SE 1/4 of SE 1/4				40	449 498	339 381	788 879	293		263
						623 68	8293	2101	10394	3464		3117
							7481	1872	9353			3118
							7480	1872				

Assessor's Return of Taxable Real Property in the Town of May, County of Cass, Minn., for the Year 1930.

Unplatted Real Estate—Assessed at 33 1-3 per cent of True and Full Value.

NAME OF OWNER	No. of School Dist.	DESCRIPTION	ASSESSOR'S VALUATIONS					EQUALIZED VALUATIONS					
			Sec. or Lot	Twp. or Block	Range	Number of Acres	True and Full Value of Land Exclusive of Structures and Improvements	STRUCTURES AND IMPROVEMENTS True and Full Value of Buildings and Other Structures	True and Full Value of Machinery Permanently Attached to Real Estate	Total True and Full Value of Land Including all Structures, Improvements and Machinery	Assessed Value of Land Including all Structures, Improvements and Machinery	Assessed Value as Equalized by Board of Review	Assessed Value as Equalized by the County Board
Carl Hagen		NE 1/4 of NE 1/4	5	133	31	35 74	457 507	214 240		671 747	249		224
"		NW 1/4 of NE 1/4				35 95	490 543		490 543	181		163	
Russell & Mary Corner		SW 1/4 of NE 1/4				40	677 750		677 750	250		226	
"		SE 1/4 of NE 1/4				40	530 588	374 420	904 1008	336		301	
Ernest Hagen		NE 1/4 of NW 1/4				36 16	520 576		520 576	192		173	
Chas Barnes		NW 1/4 of NW 1/4				36 36	717 795		717 795	265		239	
"		SW 1/4 of NW 1/4				40	717 795		717 795	265		239	
Russell & Mary Corner		SE 1/4 of NW 1/4				40	520 576		520 576	192		173	
W. R. Jones		NE 1/4 of SW 1/4				40	541 600		541 600	200		180	
Chas Barnes		NW 1/4 of SW 1/4				40	595 660	468 525	1063 1185	395		354	
O. G. Jones		SW 1/4 of SW 1/4				40	490 543	200 225	690 768	256		230	
De Witt Roberts & Ada Roberts		SE 1/4 of SW 1/4				40	425 471		425 471	157		142	
Jens Peterson & A. A. Christensen		NE 1/4 of SE 1/4				40	595 660		595 660	220		198	
O. G. Jones		NW 1/4 of SE 1/4				40	639 708		639 708	236		213	
De Witt Roberts & Ada Roberts		SW 1/4 of SE 1/4				40	465 515	233 261	698 776	258		233	
Jens Peterson & A. A. Christensen		SE 1/4 of SE 1/4				40	379 420		379 420	140		126	
						624 21	9707	1691	11378	3792		3414	
							8757	1489	10246			3415	
							8756	1489					

6 Assessor's Return of Taxable Real Property in the Town of May, County of Cass, Minn., for the Year 1930.
 Unplatted Real Estate—Assessed at 33 1-3 per cent of True and Full Value.

NAME OF OWNER	No. of School Dist.	DESCRIPTION	ASSESSOR'S VALUATIONS					EQUALIZED VALUATIONS				
			Sec. or Lot	Twp. or Block	Range	Number of Acres	True and Full Value of Land Exclusive of Structures and Improvements Dollars	STRUCTURES AND IMPROVEMENTS True and Full Value of Buildings and Other Structures Dollars	True and Full Value of Machinery Permanently Attached to Real Estate Dollars	Total True and Full Value of Land Including all Structures, Improvements and Machinery Dollars	Assessed Value as Equalized by Board of Review Dollars	Assessed Value as Equalized by the County Board Dollars
<i>Faye Cole Andrus</i>		NE 1/4 of NE 1/4	6	133	31	36 75	541 600		541 600	200		180
"		NW 1/4 of NE 1/4				37 34	541 600		541 600	200		180
"		SW 1/4 of NE 1/4				40	541 600		541 600	200		180
"		SE 1/4 of NE 1/4				40	541 600		541 600	200		180
<i>Peoples State Bk. Morley</i>		<i>Lots 7 & 8</i>				75 94	877 972		877 972	324		292
<i>Geo Hapner</i>		NE 1/4 of NW 1/4 Lot 3				37 94	460 510		460 510	170		153
"		NW 1/4 of NW 1/4				38 54	438 486	88 99	526 585	195		175
<i>People State Bk, Morley</i>		SW 1/4 of NW 1/4				40	438 486	88 99	526 585	195		175
"		SE 1/4 of NW 1/4				40	438 486		438 486	162		146
<i>James B. Reid</i>		NE 1/4 of SW 1/4 Lot 11				40	541 600		541 600	200		180
"		NW 1/4 of SW 1/4				40	509 564		509 564	188		170
"		SW 1/4 of SW 1/4				40	541 600		541 600	200		180
"		SE 1/4 of SW 1/4				40	509 564		509 564	188		170
<i>Lena Schmit</i>						37 71	308 342		308 342	114		103
<i>Faye Cole Andrus</i>		NE 1/4 of SE 1/4				40	541 600		541 600	200		180
"		NW 1/4 of SE 1/4				40	541 600		541 600	200		180
<i>Augusta Abrahamson</i>		SW 1/4 of SE 1/4				40	460 510		460 510	170		153
<i>Chas E. Barnes</i>		SE 1/4 of SE 1/4				40	433 480		433 480	160		144
<i>Lena Schmit</i>						39 13	471 522		471 522	174		157
<i>E. A. Gustafson</i>		<i>Lots 15 & 16</i>				76 42	830 920		830 920	314		282
<i>Billie V. Jones and Frederick C. Jones</i>						93 95	12800		12800	473		402
							115 44	619	134 19	447		402
							115 46	551	120 95	447		402

7 Assessor's Return of Taxable Real Property in the Town of May, County of Cass, Minn., for the Year 1930.
 Unplatted Real Estate—Assessed at 33 1-3 per cent of True and Full Value.

NAME OF OWNER	No. of School Dist.	DESCRIPTION	ASSESSOR'S VALUATIONS					EQUALIZED VALUATIONS				
			Sec. or Lot	Twp. or Block	Range	Number of Acres	True and Full Value of Land Exclusive of Structures and Improvements Dollars	STRUCTURES AND IMPROVEMENTS True and Full Value of Buildings and Other Structures Dollars	True and Full Value of Machinery Permanently Attached to Real Estate Dollars	Total True and Full Value of Land Including all Structures, Improvements and Machinery Dollars	Assessed Value as Equalized by Board of Review Dollars	Assessed Value as Equalized by the County Board Dollars
<i>B. J. Prettyman</i>		NE 1/4 of NE 1/4				40	379 420		379 420	140		126
"		NW 1/4 of NE 1/4				40	541 600		541 600	200		180
"		SW 1/4 of NE 1/4				40	541 600		541 600	200		180
<i>F. A. Swenson</i>		SE 1/4 of NE 1/4				40	379 420		379 420	140		126
<i>L. Leroy Reynolds</i>		Lot 11				47 31	682 756	347 390	1029 146	382		343
<i>Nish Nat'l Bk Linton, Minn</i>		NE 1/4 of NW 1/4				40	433 480		433 480	160		144
"		NW 1/4 of NW 1/4				40	547 606		547 606	202		182
"		SW 1/4 of NW 1/4				40	541 600	37 4420	915 1020	340		305
"		SE 1/4 of NW 1/4				40	460 510		460 510	170		153
<i>Mannie E. Armstrong</i>		<i>Lots 4 & 5 less 5.4 ac unless 4 ac.</i>				68 11	723 801		723 801	267		241
<i>A. R. Shyer</i>		NE 1/4 of SW 1/4 Lot 9				40	541 600		541 600	200		180
"		NW 1/4 of SW 1/4				40	541 600		541 600	200		180
<i>Augusta Abrahamson</i>		SW 1/4 of SW 1/4				22 63	298 330		298 330	110		99
<i>Geo F. Cushman</i>		SE 1/4 of SW 1/4				33 22	379 420		379 420	140		126
<i>Wm Jacobs</i>		" 3				40	541 600		541 600	200		180
<i>F. A. Swenson</i>		NE 1/4 of SE 1/4				40	525 582		525 582	194		175
<i>Herbert Henward</i>		NW 1/4 of SE 1/4				40	579 642	91 102	670 744	245		223
<i>Geo F. Cushman</i>		SW 1/4 of SE 1/4 <i>less Ry Rtg</i>				38 67	541 600		541 600	200		180
<i>F. A. Swenson</i>		SE 1/4 of SE 1/4				39 65	590 654	428 480	1018 1134	378		339
<i>Carl Alt</i>		Lot 6				40	460 510	13 4150	594 660	220		198
<i>Raymond B. Cole</i>		Lot 1 - <i>Belk 3 Whitesburg</i>				1 37	19 21		19 21	7		6
<i>Mabel Thomas</i>		5.4 ac. of Lot 5				5 40	73 81	88 99	161 80	60		54
<i>Lewis L. Smith</i>		4 acres of Lot 5				4 00	62 69	88 99	150 68	56		50
						10 375	820 36	1325 1502	1995 13242	44 7		3970

Assessor's Return of Taxable Real Property in the Town of May, County of Cass, Minn., for the Year 1930.

Unplatted Real Estate—Assessed at 33 1-3 per cent of True and Full Value.

Table with columns: NAME OF OWNER, No. of School Dist., DESCRIPTION, SUBDIVISION, Sec. or Lot, Twp. or Block, Range, Number of Acres, ASSESSOR'S VALUATIONS (True and Full Value, Structures and Improvements, Total True and Full Value), EQUALIZED VALUATIONS (Assessed Value as Equalized by Board of Review, Assessed Value as Equalized by the County Board, Assessed Value as Equalized by the Minnesota Tax Commission).

Assessor's Return of Taxable Real Property in the Town of May, County of Cass, Minn., for the Year 1930.

Unplatted Real Estate—Assessed at 33 1-3 per cent of True and Full Value.

Table with columns: NAME OF OWNER, No. of School Dist., DESCRIPTION, SUBDIVISION, Sec. or Lot, Twp. or Block, Range, Number of Acres, ASSESSOR'S VALUATIONS (True and Full Value, Structures and Improvements, Total True and Full Value), EQUALIZED VALUATIONS (Assessed Value as Equalized by Board of Review, Assessed Value as Equalized by the County Board, Assessed Value as Equalized by the Minnesota Tax Commission).

NAME OF OWNER	No. of School Dist.	DESCRIPTION	ASSESSOR'S VALUATIONS						EQUALIZED VALUATIONS			
			Sec. or Lot	Twp. or Block	Range	Number of Acres	True and Full Value of Land Exclusive of Structures and Improvements	STRUCTURES AND IMPROVEMENTS	Total True and Full Value of Land Including all Structures, Improvements and Machinery	Assessed Value of Land Including all Structures, Improvements and Machinery	Assessed Value as Equalized by Board of Review	Assessed Value as Equalized by the County Board
Frank Seadlund		NE 1/4 of NE 1/4	19	133	31	40	433 480		433 480	160		144
Anton Luck		NW 1/4 of NE 1/4				40	552 612		552 612	204		184
John M. Schmidt		SW 1/4 of NE 1/4				40	636 705	6 287 05	1264 1410	470		421
		SE 1/4 of NE 1/4				40	433 480		433 480	160		144
Artiel Berndt		NE 1/4 of NW 1/4				40	568 630		568 630	210		189
Edwin Newbirk		NW 1/4 of NW 1/4				40	568 630		568 630	210		189
Geo Berndt		SW 1/4 of NW 1/4				40	460 510		460 510	170		153
Anton Luck		SE 1/4 of NW 1/4				40	406 450		406 450	150		135
A. Rosold		NE 1/4 of SW 1/4				40	465 516		465 516	172		155
"		NW 1/4 of SW 1/4				40	687 762	855 960	1542 722	574		514
"		SW 1/4 of SW 1/4				40	649 720		649 720	240		216
"		SE 1/4 of SW 1/4				40	433 480		433 480	160		144
Owners Lbr Co		NE 1/4 of SE 1/4				40	541 600		541 600	200		180
Frank Seadlund		NW 1/4 of SE 1/4				40	555 615		555 615	205		185
J. N. Morgan		SW 1/4 of SE 1/4				40	566 627		566 627	209		189
J. Britton		SE 1/4 of SE 1/4				40	566 627		566 627	209		189
						640	9444	1665	11109	3703		3331
							8518	1483	10001			3334
							8518	1483				

NAME OF OWNER	No. of School Dist.	DESCRIPTION	ASSESSOR'S VALUATIONS						EQUALIZED VALUATIONS			
			Sec. or Lot	Twp. or Block	Range	Number of Acres	True and Full Value of Land Exclusive of Structures and Improvements	STRUCTURES AND IMPROVEMENTS	Total True and Full Value of Land Including all Structures, Improvements and Machinery	Assessed Value of Land Including all Structures, Improvements and Machinery	Assessed Value as Equalized by Board of Review	Assessed Value as Equalized by the County Board
Theodora Braun		NE 1/4 of NE 1/4	11	133	31	40	308 342		308 342	114		103
G. E. Brown		NW 1/4 of NE 1/4				40	460 570	77	460 570	180		153
		SW 1/4 of NE 1/4				40	460 510		460 510	170		153
Theodora Braun		SE 1/4 of NE 1/4				40	538 597	88 99	626 696	232		209
Mathilda Aurst		NE 1/4 of NW 1/4				40	498 552	249 279	747 831	277		249
Elmer H. Aurst		NW 1/4 of NW 1/4				40	433 480		433 480	160		144
Mathilda Aurst		SW 1/4 of NW 1/4				40	460 510		460 510	170		153
John A. Carlson		SE 1/4 of NW 1/4				40	639 708		639 708	236		213
"		NE 1/4 of SW 1/4				40	474 525	414 465	888 990	330		296
"		NW 1/4 of SW 1/4				40	555 615		555 615	205		185
John Britton		SW 1/4 of SW 1/4				40	533 591		533 591	199		178
"		SE 1/4 of SW 1/4				40	525 582	508 570	1033 1152	384		344
"		NE 1/4 of SE 1/4				40	433 480		433 480	160		144
"		NW 1/4 of SE 1/4				40	433 480		433 480	160		144
Maggie Cox		SW 1/4 of SE 1/4				40	541 600		541 600	200		180
S. H. Wright		SE 1/4 of SE 1/4				40	522 579	214 240	736 819	275		245
						640	9661	1653	10914	3434		3093
							7812	1473	7285			3045
							7812	1473				

Assessor's Return of Taxable Real Property in the Town of May, County of Cass, Minn., for the Year 1930.

Unplatted Real Estate—Assessed at 33 1-3 per cent of True and Full Value.

NAME OF OWNER	No. of School Dist.	DESCRIPTION	ASSESSOR'S VALUATIONS										EQUALIZED VALUATIONS			
			SUBDIVISION	Sec. or Lot	Twp. or Block	Range	Number of Acres		True and Full Value of Lands Exclusive of Structures and Improvements Dollars	STRUCTURES AND IMPROVEMENTS		Total True and Full Value of Lands Including all Structures, Improvements and Machinery Dollars	Assessed Value of Lands Including all Structures, Improvements and Machinery Dollars	Assessed Value as Equalized by Board of Review Dollars	Assessed Value as Equalized by the County Board Dollars	Assessed Value as Equalized by the Minnesota Tax Commission Dollars
							Acres	100ths		True and Full Value of Buildings and Other Structures Dollars	True and Full Value of Machinery Permanently Attached to Real Estate Dollars					
<i>Annie J. Whipple</i>		NE 1/4 of NE 1/4	12	133	31	40		460 570		460 570	170		153			
<i>J. G. Millsprague & N.W. Trust Co.</i>		NW 1/4 of NE 1/4				40		541 600		541 600	200		180			
<i>John K. Richmond</i>		SW 1/4 of NE 1/4				40		433 480	911 02	524 582	194		175			
"		SE 1/4 of NE 1/4				40		433 480		433 480	160		144			
<i>J. G. Millsprague & N.W. Trust Co.</i>		NE 1/4 of NW 1/4				40		541 600		541 600	200		180			
<i>H. A. Wilson</i>		NW 1/4 of NW 1/4				40		541 600		541 600	200		180			
<i>J. G. Millsprague & N.W. Trust Co.</i>		SW 1/4 of NW 1/4				40		325 360		325 360	120		108			
<i>J. G. Millsprague & N.W. Trust Co.</i>		SE 1/4 of NW 1/4				40		460 510		460 510	170		153			
<i>John P. Niskaard</i>		NE 1/4 of SW 1/4				40		460 510		460 510	170		153			
<i>H. A. Wilson</i>		NW 1/4 of SW 1/4				40		325 360		325 360	120		108			
"		SW 1/4 of SW 1/4				40		379 420		379 420	140		126			
"		SE 1/4 of SW 1/4				40		338 375	160 180	498 555	154		166			
<i>First National Bank, Motley</i>		NE 1/4 of SE 1/4				40		433 480		433 480	160		144			
"		NW 1/4 of SE 1/4				40		433 480		433 480	160		144			
"		SW 1/4 of SE 1/4				40		460 510		460 510	170		153			
<i>Andrew Hagg, Sr.</i>		SE 1/4 of SE 1/4				40		460 510		460 510	170		153			
						640		7985	283	8067	2688		2420			
								7022	251	7273			2424			
								7022	251							

Assessor's Return of Taxable Real Property in the Town of May, County of Cass, Minn., for the Year 1930.

Unplatted Real Estate—Assessed at 33 1-3 per cent of True and Full Value.

NAME OF OWNER	No. of School Dist.	DESCRIPTION	ASSESSOR'S VALUATIONS										EQUALIZED VALUATIONS			
			SUBDIVISION	Sec. or Lot	Twp. or Block	Range	Number of Acres		True and Full Value of Lands Exclusive of Structures and Improvements Dollars	STRUCTURES AND IMPROVEMENTS		Total True and Full Value of Lands Including all Structures, Improvements and Machinery Dollars	Assessed Value of Lands Including all Structures, Improvements and Machinery Dollars	Assessed Value as Equalized by Board of Review Dollars	Assessed Value as Equalized by the County Board Dollars	Assessed Value as Equalized by the Minnesota Tax Commission Dollars
							Acres	100ths		True and Full Value of Buildings and Other Structures Dollars	True and Full Value of Machinery Permanently Attached to Real Estate Dollars					
<i>Andrew Hagg, Sr.</i>		NE 1/4 of NE 1/4	15	133	31	40		652 723		652 723	241		217			
<i>C. L. Hannaka</i>		NW 1/4 of NE 1/4				40		433 450		433 450	160		144			
"		SW 1/4 of NE 1/4				40		570 555	347 390	948 945	315		283			
<i>Andrew Hagg, Sr.</i>		SE 1/4 of NE 1/4				40		465 504	254 285	709 789	262		236			
<i>C. L. Hannaka</i>		NE 1/4 of NW 1/4				40		617 654		617 654	228		206			
<i>Elizabeth Cole</i>		NW 1/4 of NW 1/4				40		460 570	88 99	548 609	203		183			
<i>J. Anderson</i>		SW 1/4 of NW 1/4				40		482 534		482 534	178		161			
<i>C. L. Hannaka</i>		SE 1/4 of NW 1/4				40		433 450		433 450	160		144			
<i>J. Anderson</i>		NE 1/4 of SW 1/4				40		563 624		563 624	208		188			
"		NW 1/4 of SW 1/4				40		677 750	356 399	1033 1149	383		344			
<i>B. A. Schumacher</i>		SW 1/4 of SW 1/4				40		563 624		563 624	208		188			
"		SE 1/4 of SW 1/4				40		595 660		595 660	220		198			
<i>Clair L. Hannaka</i>		NE 1/4 of SE 1/4				40		433 450		433 450	160		144			
<i>B. A. Schumacher</i>		NW 1/4 of SE 1/4				40		568 630		568 630	210		189			
"		SW 1/4 of SE 1/4				40		622 690		622 690	230		207			
<i>Clair L. Hannaka</i>		SE 1/4 of SE 1/4				40		363 402	88 99	451 501	167		150			
						640		9330	1272	10602	3534		3182			
								8417	1133	9550			3183			
								8416	1133							

Assessor's Return of Taxable Real Property in the Town of May, County of Cass, Minn., for the Year 1930.

Unplatted Real Estate—Assessed at 33 1-3 per cent of True and Full Value.

NAME OF OWNER	No. of School Dist.	DESCRIPTION	ASSESSOR'S VALUATIONS					EQUALIZED VALUATIONS					
			Sec. or Lot	Twp. or Block	Range	Number of Acres	True and Full Value of Lands Exclusive of Structures and Improvements	STRUCTURES AND IMPROVEMENTS True and Full Value of Buildings and Other Structures	True and Full Value of Machinery Permanently Attached to Real Estate	Total True and Full Value of Lands Including all Structures, Improvements and Machinery	Assessed Value of Lands Including all Structures, Improvements and Machinery	Assessed Value as Equalized by Board of Review	Assessed Value as Equalized by the County Board
G. A. Schumacher		NE 1/4 of NE 1/4	14	133	31	40	541 600		541 600	200			180
"		NW 1/4 of NE 1/4				40	541 600		541 600	200			180
"		SW 1/4 of NE 1/4				40	433 480		433 480	160			144
"		SE 1/4 of NE 1/4				40	595 660		595 660	220			198
Chas. A. Carlson & Chester A. Martin		NE 1/4 of NW 1/4				40	541 600		541 600	200			180
Jane C. Donovan		NW 1/4 of NW 1/4				40	433 480		433 480	160			144
"		SW 1/4 of NW 1/4				40	514 570		514 570	190			171
John A. Carlson & Chester A. Martin		SE 1/4 of NW 1/4				40	433 480	390	433 480	160			144
First Nat'l Bank, Motley		NE 1/4 of SW 1/4				40	579 642		579 642	214			193
John Donovan		NW 1/4 of SW 1/4				40	501 555	34 7390	848 945	315			283
"		SW 1/4 of SW 1/4				40	501 555		501 555	185			167
First National Bk., Motley		SE 1/4 of SW 1/4				40	514 570	45 4510	968 080	360			323
G. A. Schumacher		NE 1/4 of SE 1/4				40	595 660	400	595 660	220			198
"		NW 1/4 of SE 1/4				40	433 480	18 7121 00	2304 2580	860			768
"		SW 1/4 of SE 1/4				40	541 600		541 600	200			180
"		SE 1/4 of SE 1/4				40	704 780		704 780	260			235
						640	9312	3000	12312	4104			3688
							8399	2672	11071				3690
							8399	2672					

Assessor's Return of Taxable Real Property in the Town of May, County of Cass, Minn., for the Year 1930.

Unplatted Real Estate—Assessed at 33 1-3 per cent of True and Full Value.

NAME OF OWNER	No. of School Dist.	DESCRIPTION	ASSESSOR'S VALUATIONS					EQUALIZED VALUATIONS					
			Sec. or Lot	Twp. or Block	Range	Number of Acres	True and Full Value of Lands Exclusive of Structures and Improvements	STRUCTURES AND IMPROVEMENTS True and Full Value of Buildings and Other Structures	True and Full Value of Machinery Permanently Attached to Real Estate	Total True and Full Value of Lands Including all Structures, Improvements and Machinery	Assessed Value of Lands Including all Structures, Improvements and Machinery	Assessed Value as Equalized by Board of Review	Assessed Value as Equalized by the County Board
Joe Francisco		NE 1/4 of NE 1/4	15	133	31	40	541 600		541 600	200			180
J. N. Morgan		NW 1/4 of NE 1/4				40	517 528	30 7 545	824 918	306			275
"		SW 1/4 of NE 1/4				40	487 540		487 540	180			162
John Donovan		SE 1/4 of NE 1/4				40	541 600		541 600	200			180
J. N. Morgan		NE 1/4 of NW 1/4				40	325 360		325 360	120			108
Hazel Bickel Irma Ward		NW 1/4 of NW 1/4				40	541 600		541 600	200			180
"		SW 1/4 of NW 1/4				40	541 600		541 600	200			180
J. N. Morgan		SE 1/4 of NW 1/4				40	446 495		446 495	165			149
Hazel Bickel Irma Ward		NE 1/4 of SW 1/4				40	541 600		541 600	200			180
"		NW 1/4 of SW 1/4				40	541 600		541 600	200			180
Martin Roswald		SW 1/4 of SW 1/4				40	552 612	31 33 50	865 962	321			288
"		SE 1/4 of SW 1/4				40	563 624		563 624	208			188
Chas. Keenkecht		NE 1/4 of SE 1/4				40	476 528		476 528	176			159
"		NW 1/4 of SE 1/4				40	460 510		460 510	170			153
"		SW 1/4 of SE 1/4				40	460 510		460 510	170			153
"		SE 1/4 of SE 1/4				40	433 480		433 480	160			144
						640	8932	696	9528	3176			2859
							7965	620	8585				2862
							7965	620					

Assessor's Return of Taxable Real Property in the Town of May, County of Cass, Minn., for the Year 1930. Unplatted Real Estate—Assessed at 33 1-3 per cent of True and Full Value.

Table with columns: NAME OF OWNER, No. of School Dist., DESCRIPTION, ASSESSOR'S VALUATIONS (True and Full Value, Structures and Improvements, Total True and Full Value), EQUALIZED VALUATIONS (Assessed Value as Equalized by Board of Review, Assessed Value as Equalized by the County Board, Assessed Value as Equalized by the Minnesota Tax Commission).

Assessor's Return of Taxable Real Property in the Town of May, County of Cass, Minn., for the Year 1930. Unplatted Real Estate—Assessed at 33 1-3 per cent of True and Full Value.

Table with columns: NAME OF OWNER, No. of School Dist., DESCRIPTION, ASSESSOR'S VALUATIONS (True and Full Value, Structures and Improvements, Total True and Full Value), EQUALIZED VALUATIONS (Assessed Value as Equalized by Board of Review, Assessed Value as Equalized by the County Board, Assessed Value as Equalized by the Minnesota Tax Commission).

Assessor's Return of Taxable Real Property in the Town of May, County of Cass, Minn., for the Year 1930.

Unplatted Real Estate—Assessed at 33 1-3 per cent of True and Full Value.

NAME OF OWNER	No. of School Dist.	DESCRIPTION	ASSESSOR'S VALUATIONS							EQUALIZED VALUATIONS				
			Sec. or Lot	Twp. or Block	Range	Number of Acres		True and Full Value of Lands Exclusive of Structures and Improvements Dollars	STRUCTURES AND IMPROVEMENTS		Total True and Full Value of Lands Including all Structures, Improvements and Machinery Dollars	Assessed Value as Equalized by Board of Review Dollars	Assessed Value as Equalized by the County Board Dollars	Assessed Value as Equalized by the Minnesota Tax Commission Dollars
						Acres	100ths		True and Full Value of Buildings and Other Structures Dollars	True and Full Value of Machinery Permanently Attached to Real Estate Dollars				
Ira S. Butler Geo. Cashman		NE $\frac{1}{4}$ of NE $\frac{1}{4}$ Lot 1 Sec R1 T1y	18	33	31	34	506	561	506	561	187	169		
		NW$\frac{1}{4}$ of NE$\frac{1}{4}$ " 2 " " "				33	49	433	480	433	480	160		
		SW $\frac{1}{4}$ of NE $\frac{1}{4}$												
Ira S. Butler		SE$\frac{1}{4}$ of NE$\frac{1}{4}$ " 12				54	04	723	801	723	801	267		
		NE $\frac{1}{4}$ of NW $\frac{1}{4}$												
		NW $\frac{1}{4}$ of NW $\frac{1}{4}$												
		SW $\frac{1}{4}$ of NW $\frac{1}{4}$												
		SE $\frac{1}{4}$ of NW $\frac{1}{4}$												
		NE $\frac{1}{4}$ of SW $\frac{1}{4}$												
		NW $\frac{1}{4}$ of SW $\frac{1}{4}$												
		SW $\frac{1}{4}$ of SW $\frac{1}{4}$												
		SE $\frac{1}{4}$ of SW $\frac{1}{4}$												
Ira S. Butler		NE$\frac{1}{4}$ of SE$\frac{1}{4}$ Lots 13				29	54	262	291	374	420	237		
		NW $\frac{1}{4}$ of SE $\frac{1}{4}$												
		SW $\frac{1}{4}$ of SE $\frac{1}{4}$												
		SE $\frac{1}{4}$ of SE $\frac{1}{4}$												
						NT 07	2	133	420	255	3	851		
								1924	374	2298		766		
								1924	374			766		

Assessor's Return of Taxable Real Property in the Town of May, County of Cass, Minn., for the Year 1930.

Unplatted Real Estate—Assessed at 33 1-3 per cent of True and Full Value.

NAME OF OWNER	No. of School Dist.	DESCRIPTION	ASSESSOR'S VALUATIONS							EQUALIZED VALUATIONS				
			Sec. or Lot	Twp. or Block	Range	Number of Acres		True and Full Value of Lands Exclusive of Structures and Improvements Dollars	STRUCTURES AND IMPROVEMENTS		Total True and Full Value of Lands Including all Structures, Improvements and Machinery Dollars	Assessed Value as Equalized by Board of Review Dollars	Assessed Value as Equalized by the County Board Dollars	Assessed Value as Equalized by the Minnesota Tax Commission Dollars
						Acres	100ths		True and Full Value of Buildings and Other Structures Dollars	True and Full Value of Machinery Permanently Attached to Real Estate Dollars				
		NE $\frac{1}{4}$ of NE $\frac{1}{4}$				20	33	31						
		NW $\frac{1}{4}$ of NE $\frac{1}{4}$												
		SW $\frac{1}{4}$ of NE $\frac{1}{4}$												
		SE $\frac{1}{4}$ of NE $\frac{1}{4}$												
Harry Merrick		NE $\frac{1}{4}$ of NW $\frac{1}{4}$ } Lot 4				9	72	108	120	108	120	40		
		NW $\frac{1}{4}$ of NW $\frac{1}{4}$ }												
		SW $\frac{1}{4}$ of NW $\frac{1}{4}$												
		SE $\frac{1}{4}$ of NW $\frac{1}{4}$												
		NE $\frac{1}{4}$ of SW $\frac{1}{4}$												
		NW $\frac{1}{4}$ of SW $\frac{1}{4}$												
		SW $\frac{1}{4}$ of SW $\frac{1}{4}$												
		SE $\frac{1}{4}$ of SW $\frac{1}{4}$												
		NE $\frac{1}{4}$ of SE $\frac{1}{4}$												
		NW $\frac{1}{4}$ of SE $\frac{1}{4}$												
		SW $\frac{1}{4}$ of SE $\frac{1}{4}$												
		SE $\frac{1}{4}$ of SE $\frac{1}{4}$												
						9	72	120	120	108	108	40		
								108				36		
								108				36		

Assessor's Return of Taxable Real Property in the Town of May, County of Cass, Minn., for the Year 1930.

Unplatted Real Estate—Assessed at 33 1-3 per cent of True and Full Value.

NAME OF OWNER	No. of School Dist.	DESCRIPTION	ASSESSOR'S VALUATIONS					EQUALIZED VALUATIONS					
			Subdivision	Sec. or Lot	Twp. or Block	Range	Number of Acres	True and Full Value of Lands Exclusive of Structures and Improvements	STRUCTURES AND IMPROVEMENTS		Assessed Value as Equalized by Board of Review	Assessed Value as Equalized by the County Board	Assessed Value as Equalized by the Minnesota Tax Commission
									True and Full Value of Buildings and Other Structures	True and Full Value of Machinery Permanently Attached to Real Estate			
<i>J. E. Stewart</i>		NE 1/4 of NE 1/4 Lot 1 less rt way	21	133	31	26 3/8	298 330			298 330	110	99	
		NW 1/4 of NE 1/4											
		SW 1/4 of NE 1/4											
		SE 1/4 of NE 1/4											
		NE 1/4 of NW 1/4											
		NW 1/4 of NW 1/4											
		SW 1/4 of NW 1/4											
		SE 1/4 of NW 1/4											
		NE 1/4 of SW 1/4											
		NW 1/4 of SW 1/4											
		SW 1/4 of SW 1/4											
		SE 1/4 of SW 1/4											
		NE 1/4 of SE 1/4											
		NW 1/4 of SE 1/4											
		SW 1/4 of SE 1/4											
		SE 1/4 of SE 1/4											
						26 3/8	330			330	110	99	
							298			298		99	
							298			298		99	

Assessor's Return of Taxable Real Property in the Town of May, County of Cass, Minn., for the Year 1930.

Unplatted Real Estate—Assessed at 33 1-3 per cent of True and Full Value.

NAME OF OWNER	No. of School Dist.	DESCRIPTION	ASSESSOR'S VALUATIONS					EQUALIZED VALUATIONS					
			Subdivision	Sec. or Lot	Twp. or Block	Range	Number of Acres	True and Full Value of Lands Exclusive of Structures and Improvements	STRUCTURES AND IMPROVEMENTS		Assessed Value as Equalized by Board of Review	Assessed Value as Equalized by the County Board	Assessed Value as Equalized by the Minnesota Tax Commission
									True and Full Value of Buildings and Other Structures	True and Full Value of Machinery Permanently Attached to Real Estate			
<i>Chas Leenknecht</i>		NE 1/4 of NE 1/4	22	133	31	40	636705	703	789	13391494	498	446	
"		NW 1/4 of NE 1/4				40	514570			514570	190	171	
"		SW 1/4 of NE 1/4 Less Rt. Wy				38 63	460510			460510	170	153	
"		SE 1/4 of NE 1/4				40	677750			677750	250	226	
<i>Wm J Lenhard</i>		NE 1/4 of NW 1/4				40	541600			541600	200	180	
"		NW 1/4 of NW 1/4				36 39	460510			460510	170	153	
"		SW 1/4 of NW 1/4 Lot 1 - Less Rt Wy				17 56	216240			216240	80	72	
"		SE 1/4 of NW 1/4				27 89	433480			433480	160	144	
<i>Security St. Bk, Pillager</i>		NE 1/4 of SW 1/4 Lot 2 - less Rt. Wy.				25 96	271300			271300	100	90	
		NW 1/4 of SW 1/4											
		SW 1/4 of SW 1/4											
		SE 1/4 of SW 1/4											
"		NE 1/4 of SE 1/4 Less Ry Rt Wy				27 79							
"		NW 1/4 of SE 1/4 Lot 3 less				38 61				1563 134 150	1490 165 2	557	
"		SW 1/4 of SE 1/4 Ry. Rt Wy											
"		SE 1/4 of SE 1/4 Lot 4				24 61							
						397 44	6168	939		7107	2369	2132	
							5564	837		6401		2134	
							5564	837					

Assessor's Return of Taxable Real Property in the Town of May, County of Cass, Minn., for the Year 1930.

Unplatted Real Estate—Assessed at 33 1-3 per cent of True and Full Value.

NAME OF OWNER	No. of School Dist.	DESCRIPTION	ASSESSOR'S VALUATIONS						EQUALIZED VALUATIONS					
			Sec. or Lot	Twp. or Block	Range	Number of Acres		True and Full Value of Lands Exclusive of Structures and Improvements Dollars	STRUCTURES AND IMPROVEMENTS		Assessed Value of Lands Including all Structures, Improvements and Machinery Dollars	Assessed Value as Equalized by Board of Review Dollars	Assessed Value as Equalized by the County Board Dollars	Assessed Value as Equalized by the Minnesota Tax Commission Dollars
						Acres	100ths		True and Full Value of Buildings and Other Structures Dollars	True and Full Value of Machinery Permanently Attached to Real Estate Dollars				
Gus A. Schumacher		NE 1/4 of NE 1/4	23	133	31	40		717795		717795	265		234	
"		NW 1/4 of NE 1/4				40		717795		717795	265		234	
"		SW 1/4 of NE 1/4				40		433480		433480	160		144	
"		SE 1/4 of NE 1/4				40		433480		433480	160		144	
Sherman W. Jacobs		NE 1/4 of NW 1/4				40		636705		636705	235		212	
F. E. Gous		NW 1/4 of NW 1/4				40		528585		528585	195		176	
"		SW 1/4 of NW 1/4				40		487540		487540	180		162	
"		SE 1/4 of NW 1/4				40		487540		487540	180		162	
Security St. Bk. Pillager		All of 7 1/2 of NW 1/4 of Ry R. W. Ry				37	21	406450		406450	150		135	
F. E. Gous		all of { NE 1/4 of SW 1/4 } No. of Ry R. W. Ry				18	79	108120	388	435			165	
"		{ NW 1/4 of SW 1/4 }												
Security St. Bk. Pillager		SW 1/4 of SW 1/4 Lot 1				39	41	433480		433480	160		144	
Gus A. Schumacher		SE 1/4 of SW 1/4				40		460510		460510	170		153	
Maclin W. Ostrem		All No. of Ry of SE 1/4				9		97108		97108	36		32	
"		NE 1/4 of SE 1/4 all So. of Ry												
"		NW 1/4 of SE 1/4 less So. of Ry				120	38	14071560		14071560	520		469	
"		SW 1/4 of SE 1/4 & N. 8 1/2 rd												
Security St. Bk. Pillager		SE 1/4 of SE 1/4 N. 8 1/2 rd of N. of SE 1/4 So. of Ry R. W. Ry				6	38	6269		6269	23		21	
								8217	435	8652	2884		2597	
						591	17	7411	388	7799			2600	

Assessor's Return of Taxable Real Property in the Town of May, County of Cass, Minn., for the Year 1930.

Unplatted Real Estate—Assessed at 33 1-3 per cent of True and Full Value.

NAME OF OWNER	No. of School Dist.	DESCRIPTION	ASSESSOR'S VALUATIONS						EQUALIZED VALUATIONS					
			Sec. or Lot	Twp. or Block	Range	Number of Acres		True and Full Value of Lands Exclusive of Structures and Improvements Dollars	STRUCTURES AND IMPROVEMENTS		Assessed Value of Lands Including all Structures, Improvements and Machinery Dollars	Assessed Value as Equalized by Board of Review Dollars	Assessed Value as Equalized by the County Board Dollars	Assessed Value as Equalized by the Minnesota Tax Commission Dollars
						Acres	100ths		True and Full Value of Buildings and Other Structures Dollars	True and Full Value of Machinery Permanently Attached to Real Estate Dollars				
Sherman W. Miller et al		NE 1/4 of NE 1/4 Less Ry R. W. Ry	24	133	31	39	75	576639		576639	213		192	
"		NW 1/4 of NE 1/4				40		433480		433480	160		144	
"		all of Ry { SW 1/4 of NE 1/4 Less 12.48 ac to Ry } SE 1/4 of NE 1/4 " 12.23 ac "				18	92	203225		203225	75		68	
R. R. Ring		all So. of Ry of 1/2 of NE 1/4				36	37	392435		392435	145		131	
G. A. Schumacher		NE 1/4 of NW 1/4				40		622690		622690	230		207	
"		NW 1/4 of NW 1/4				40		595660		595660	220		198	
"		SW 1/4 of NW 1/4 Less 2.86 ac Ry R. W. Ry				37	14	563624		563624	208		188	
"		SE 1/4 of NW 1/4 " 11.49 " " "				28	51	411456		411456	152		137	
State of Minn. (Dept. of Forests)		NE 1/4 of SW 1/4 " 4.36 " " "				35	64	465516		465516	172		155	
"		NW 1/4 of SW 1/4 " 6.20 " " "				33	80	620687		620687	229		207	
"		SW 1/4 of SW 1/4				40		636705	585	600	117	1305	435	390
"		SE 1/4 of SW 1/4				40		482534		482534	178		161	
R. P. Ring		NE 1/4 of SE 1/4				40		433480	144	284	157	1764	588	526
"		NW 1/4 of SE 1/4				40		571632		571632	211		190	
"		SW 1/4 of SE 1/4				40		460510		460510	170		153	
"		SE 1/4 of SE 1/4				40		563624		563624	208		188	
						590	13	8899	1684		107	82	3594	3235
								8025	1679		970	4		3235
								8026	1679					

Assessor's Return of Taxable Real Property in the Town of May, County of Cass, Minn., for the Year 1930.

Unplatted Real Estate—Assessed at 33 1-3 per cent of True and Full Value.

NAME OF OWNER	No. of School Dist.	DESCRIPTION	ASSESSOR'S VALUATIONS										EQUALIZED VALUATIONS			
			SUBDIVISION	Sec. or Lot	Twp. or Block	Range	Number of Acres		True and Full Value of Lands Exclusive of Structures and Improvements	STRUCTURES AND IMPROVEMENTS		Total True and Full Value of Lands Including all Structures, Improvements and Machinery	Assessed Value of Lands Including all Structures, Improvements and Machinery	Assessed Value as Equalized by Board of Review	Assessed Value as Equalized by the County Board	Assessed Value as Equalized by the Minnesota Tax Commission
							Dollars	Cents		Dollars	Dollars					
Roy Ring		NE 1/4 of NE 1/4 Lot 4 less 12.5 a for flowage	25	133	31	19	12	189	210	189	210	70		63		
"		NW 1/4 of NE 1/4 " 3 " 12.5 " " "				24	72	227	252	227	252	84		76		
Minn Power Light Co		SW 1/4 of NE 1/4 " 2				30	44	333	369	333	369	124		111		
"		SE 1/4 of NE 1/4 " 1				51	36	603	669	603	669	223		201		
Roy Ring		NE 1/4 of NW 1/4				40		433	480	433	480	160		144		
R.P. Ring		NW 1/4 of NW 1/4				40		433	480	433	480	160		144		
Ward A. Reid		SW 1/4 of NW 1/4 that part lying below the 1205' elevation of lot 5				12	50	130	144	130	144	48		43		
"		SE 1/4 of NW 1/4 " 1205' " " 4				12	50	130	144	130	144	48		43		
		NE 1/4 of SW 1/4														
		NW 1/4 of SW 1/4														
		SW 1/4 of SW 1/4														
		SE 1/4 of SW 1/4														
		NE 1/4 of SE 1/4														
		NW 1/4 of SE 1/4														
		SW 1/4 of SE 1/4														
		SE 1/4 of SE 1/4														
						230	64	274	8	289	9	966		825		
								247	8	247	8			826		
								247	9	247	9					

Assessor's Return of Taxable Real Property in the Town of May, County of Cass, Minn., for the Year 1930.

Unplatted Real Estate—Assessed at 33 1-3 per cent of True and Full Value.

NAME OF OWNER	No. of School Dist.	DESCRIPTION	ASSESSOR'S VALUATIONS										EQUALIZED VALUATIONS			
			SUBDIVISION	Sec. or Lot	Twp. or Block	Range	Number of Acres		True and Full Value of Lands Exclusive of Structures and Improvements	STRUCTURES AND IMPROVEMENTS		Total True and Full Value of Lands Including all Structures, Improvements and Machinery	Assessed Value of Lands Including all Structures, Improvements and Machinery	Assessed Value as Equalized by Board of Review	Assessed Value as Equalized by the County Board	Assessed Value as Equalized by the Minnesota Tax Commission
							Dollars	Cents		Dollars	Dollars					
W. Hardy		NE 1/4 of NE 1/4				26	133	31	40	43	3480	433	480	160	144	
"		NW 1/4 of NE 1/4 } Lot 3				54	70	622	690	134	150	756	840	330	252	
"		SW 1/4 of NE 1/4 }														
Minn Power Light Co		SE 1/4 of NE 1/4 " 4				38	60	449	498	449	498	166		150		
"		NE 1/4 of NW 1/4 " 2				39	98	460	510	460	510	170		153		
"		NW 1/4 of NW 1/4 " 1				29	96	325	360	325	360	120		108		
		SW 1/4 of NW 1/4														
		SE 1/4 of NW 1/4														
		NE 1/4 of SW 1/4														
		NW 1/4 of SW 1/4														
		SW 1/4 of SW 1/4														
		SE 1/4 of SW 1/4														
		NE 1/4 of SE 1/4														
		NW 1/4 of SE 1/4														
		SW 1/4 of SE 1/4														
		SE 1/4 of SE 1/4														
						203	24	253	8	253	8	846		807		
								278	9	278	9	134		808		
								278	9	278	9	134				

Matley, Minn.

Aug 12 1930

Dear Mrs. Colby:-

It has been very hard for me to find out who's land the cottage in question is located on owing to the fact that there are no fences or section lines marked near by and no one is occupying the building. However I secured the information this morning and am passing it on to you.

I find that instead of being on Lots 3 and 4 sec 25 133-31 the building is on Lot 3 and the N.E. $\frac{1}{4}$ of N.E. $\frac{1}{4}$ Sec 26 Twp 133-31 R 31. and belongs to Oscar Larson and is worth \$150. True and full value.

Please advise me if there is any way that I can help further to correct the error.

Yours Truly

A. J. Hicks
Assessor.

Assessor's Return of Taxable Real Property in the Town of May, County of Cass, Minn., for the Year 1930.

Unplatted Real Estate—Assessed at 33 1-3 per cent of True and Full Value.

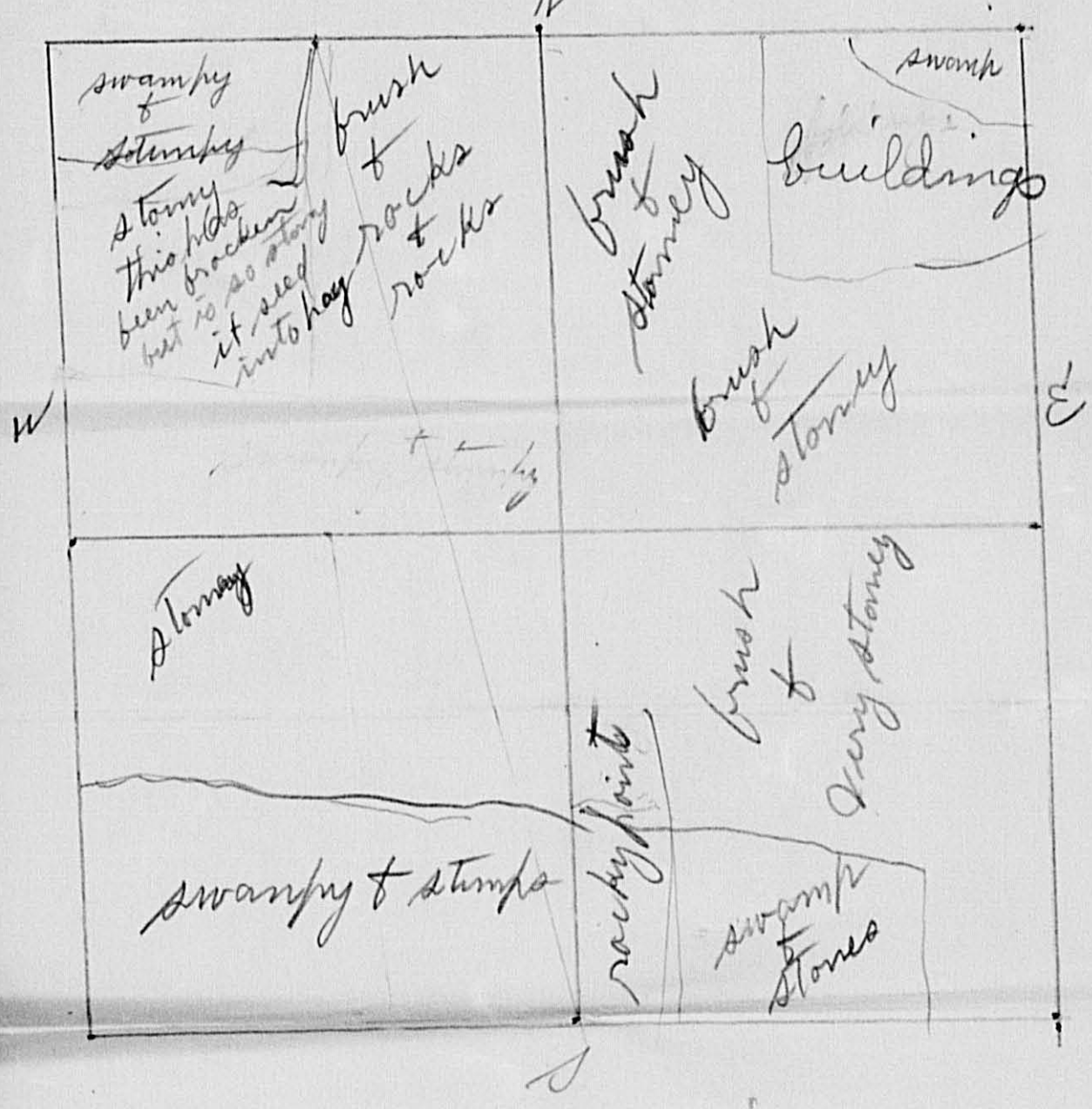
NAME OF OWNER	No. of School Dist.	DESCRIPTION	ASSESSOR'S VALUATIONS					EQUALIZED VALUATIONS					
			Subdivision	Sec. or Lot	Twp. or Block	Range	Number of Acres	True and Full Value of Land and Improvements	STRUCTURES AND IMPROVEMENTS		Assessed Value as Equalized by Board of Review	Assessed Value as Equalized by the County Board	Assessed Value as Equalized by the Minnesota Tax Commission
									True and Full Value of Buildings and Other Structures	True and Full Value of Machinery Permanently Attached to Real Estate			
Chas A. Gilchrist		NE 1/4 of NE 1/4	1	134	31	40	541600		541600	200	180		
"		NW 1/4 of NE 1/4				40	487540		487540	180	162		
"		SW 1/4 of NE 1/4				40	487540		487540	180	162		
"		SE 1/4 of NE 1/4				40	541600		541600	200	180		
B. J. Pettigman		NE 1/4 of NW 1/4				40	433480		433480	160	144		
"		NW 1/4 of NW 1/4				40	433480		433480	160	144		
"		SW 1/4 of NW 1/4				40	487540	88 99	575139	213	192		
"		SE 1/4 of NW 1/4				40	433480		433480	160	144		
Aunt Barthe		NE 1/4 of SW 1/4				40	257285		257285	95	86		
"		NW 1/4 of SW 1/4				40	325360		325360	120	108		
"		SW 1/4 of SW 1/4				40	346384	241 270	587654	218	196		
"		SE 1/4 of SW 1/4				40	357396		357396	132	119		
Chas H. Gilchrist		NE 1/4 of SE 1/4				40	479531		479531	177	160		
"		NW 1/4 of SE 1/4				40	479531		479531	177	160		
"		SW 1/4 of SE 1/4				40	479531		479531	177	160		
"		SE 1/4 of SE 1/4				40	479531		479531	177	160		
						640	17609	369	8178	2726	2457		
							7043	329	7372		2457		
							7044	329			2457		

Assessor's Return of Taxable Real Property in the Town of May, County of Cass, Minn., for the Year 1930.

Unplatted Real Estate—Assessed at 33 1-3 per cent of True and Full Value.

NAME OF OWNER	No. of School Dist.	DESCRIPTION	ASSESSOR'S VALUATIONS					EQUALIZED VALUATIONS					
			Subdivision	Sec. or Lot	Twp. or Block	Range	Number of Acres	True and Full Value of Land and Improvements	STRUCTURES AND IMPROVEMENTS		Assessed Value as Equalized by Board of Review	Assessed Value as Equalized by the County Board	Assessed Value as Equalized by the Minnesota Tax Commission
									True and Full Value of Buildings and Other Structures	True and Full Value of Machinery Permanently Attached to Real Estate			
E. A. Green		NE 1/4 of NE 1/4	2	134	31	39 60	216240		216240	80	72		
"		NW 1/4 of NE 1/4				39 20	433480		433480	160	144		
"		SW 1/4 of NE 1/4				40	298330		298330	110	99		
"		SE 1/4 of NE 1/4				40	216240	454510	670750	250	223		
George Horn		NE 1/4 of NW 1/4				38 80	271300		271300	100	90		
First Nat'l Bk. Motley		NW 1/4 of NW 1/4 Lot 4				38 40	433480		433480	160	144		
"		SW 1/4 of NW 1/4				40	460570		460570	170	153		
George Horn		SE 1/4 of NW 1/4				40	433480		433480	160	144		
First Nat. Bk. Motley		NE 1/4 of SW 1/4				40	460510		460510	170	153		
"		NW 1/4 of SW 1/4				40	460510		460570	170	153		
Thoyd Cahoon		SW 1/4 of SW 1/4				40	433480		433480	160	144		
"		SE 1/4 of SW 1/4				40	433480	120	433480	160	144		
J. A. Ackerson		NE 1/4 of SE 1/4				40	360399		360399	133	120		
"		NW 1/4 of SE 1/4				40	549609		549609	203	183		
"		SW 1/4 of SE 1/4				40	398441		398441	147	133		
"		SE 1/4 of SE 1/4				40	452501	396445	848945	315	283		
						63600	6990	955	7945	2648	2382		
							6305	850	7155		2385		
							6305	851			2385		

N. E. 1/4 Sec. 2, Town 134 P. 31.
 E. A. Green,



There has been no improvement since it was assessed two years ago. The assessors receipt to me at that time was \$5-33 on the whole 160 acres,
 (over)

I have enclosed a list of
my personal property for
1930. I have based the
valuation from last years
assessment, except the
live stock and will leave
that to you.

E. A. Green

Assessor's Return of Taxable Real Property in the Town of May, County of Cass, Minn., for the Year 1930.

Unplatted Real Estate—Assessed at 33 1-3 per cent of True and Full Value.

NAME OF OWNER	No. of School Dist.	DESCRIPTION	ASSESSOR'S VALUATIONS										EQUALIZED VALUATIONS			
			SUBDIVISION	Sec. or Lot	Twp. or Block	Range	Number of Acres		True and Full Value of Lands Exclusive of Structures and Improvements Dollars	STRUCTURES AND IMPROVEMENTS		Total True and Full Value of Lands Including all Structures, Improvements and Machinery Dollars	Assessed Value of Lands Including all Structures, Improvements and Machinery Dollars	Assessed Value as Equalized by Board of Review Dollars	Assessed Value as Equalized by the County Board Dollars	Assessed Value as Equalized by the Minnesota Tax Commission Dollars
							True and Full Value of Buildings and Other Structures Dollars	True and Full Value of Machinery Permanently Attached to Real Estate Dollars								
<i>Fidelity Finance Corporation</i>		NE 1/4 of NE 1/4 Lot 1	3	134	31		38	20	541	600	541	600	200	180		
"		NW 1/4 of NE 1/4 " 2					38	20	541	600	541	600	200	180		
"		SW 1/4 of NE 1/4					40		541	600	541	600	200	180		
"		SE 1/4 of NE 1/4					40		541	600	541	600	200	180		
"		NE 1/4 of NW 1/4 " 3					38	20	460	510	460	510	170	153		
"		NW 1/4 of NW 1/4 " 4					38	20	460	510	460	510	170	153		
"		SW 1/4 of NW 1/4					40		541	600	541	600	200	180		
"		SE 1/4 of NW 1/4					40		541	600	541	600	200	180		
"		NE 1/4 of SW 1/4					40		541	600	541	600	200	180		
"		NW 1/4 of SW 1/4					40		541	600	541	600	200	180		
<i>G. N. Halblom</i>		SW 1/4 of SW 1/4					40		541	600	541	600	200	180		
<i>Fidelity Finance Corporation</i>		SE 1/4 of SW 1/4					40		460	510	1604	1800	770	688		
"		NE 1/4 of SE 1/4					40		460	510	460	510	170	153		
"		NW 1/4 of SE 1/4					40		460	510	460	510	170	153		
"		SW 1/4 of SE 1/4					40		541	600	541	600	200	180		
"		SE 1/4 of SE 1/4					40		460	510	460	510	170	153		
							632	80	9060	1800	10860	3620		3253		
									8170	1604	9774			3258		
									8172	1604						

Assessor's Return of Taxable Real Property in the Town of May, County of Cass, Minn., for the Year 1930.

Unplatted Real Estate—Assessed at 33 1-3 per cent of True and Full Value.

NAME OF OWNER	No. of School Dist.	DESCRIPTION	ASSESSOR'S VALUATIONS										EQUALIZED VALUATIONS			
			SUBDIVISION	Sec. or Lot	Twp. or Block	Range	Number of Acres		True and Full Value of Lands Exclusive of Structures and Other Improvements Dollars	STRUCTURES AND IMPROVEMENTS		Total True and Full Value of Lands Including all Structures, Improvements and Machinery Dollars	Assessed Value of Lands Including all Structures, Improvements and Machinery Dollars	Assessed Value as Equalized by Board of Review Dollars	Assessed Value as Equalized by the County Board Dollars	Assessed Value as Equalized by the Minnesota Tax Commission Dollars
							True and Full Value of Buildings and Other Structures Dollars	True and Full Value of Machinery Permanently Attached to Real Estate Dollars								
<i>J. A. Serber</i>		NE 1/4 of NE 1/4 Lot 1	4	134	31		37	78	525	582	525	582	194		175	
"		NW 1/4 of NE 1/4 " 2					36	93	417	462	417	462	154		139	
"		SW 1/4 of NE 1/4					40		479	531	479	531	177		160	
"		SE 1/4 of NE 1/4					40		541	600	541	600	200		180	
<i>S. H. Jacobs</i>		NE 1/4 of NW 1/4 " 3					36	07	541	600	541	600	200		180	
"		NW 1/4 of NW 1/4 " 4					35	22	563	624	563	624	208		188	
"		SW 1/4 of NW 1/4					40		563	624	563	624	208		188	
"		SE 1/4 of NW 1/4					40		541	600	541	600	200		180	
<i>John Durbin</i>		NE 1/4 of SW 1/4					40		498	552	498	552	184		166	
"		NW 1/4 of SW 1/4					40		511	568	725	808	269		242	
<i>Dydney E. Benion</i>		SW 1/4 of SW 1/4					40		541	600	541	600	200		180	
"		SE 1/4 of SW 1/4					40		541	600	541	600	200		180	
"		NE 1/4 of SE 1/4					40		541	600	541	600	200		180	
"		NW 1/4 of SE 1/4					40		541	600	541	600	200		180	
"		SW 1/4 of SE 1/4					40		541	600	541	600	200		180	
"		SE 1/4 of SE 1/4					40		541	600	541	600	200		180	
							626	00	9342	240	9582	3194			2878	
									8425	214	9639				2580	
									8426	214						

NAME OF OWNER	No. of School Dist.	DESCRIPTION	ASSESSOR'S VALUATIONS					EQUALIZED VALUATIONS				
			Sec. or Lot	Twp. or Block	Range	Number of Acres	True and Full Value of Lands Exclusive of Structures and Improvements	STRUCTURES AND IMPROVEMENTS True and Full Value of Buildings and Other Structures	True and Full Value of Machinery Permanently Attached to Real Estate	Total True and Full Value of Lands Including all Structures, Improvements and Machinery	Assessed Value of Lands Including all Structures, Improvements and Machinery	Assessed Value as Equalized by Board of Review
Richard N. Gardner		NE 1/4 of NE 1/4 Lot 1	5	134	31	34 87	568 630		568 630	210		189
"		NW 1/4 of NE 1/4 " 2				35 01	568 630		568 630	210		189
Sophie O. A. Goplen		SW 1/4 of NE 1/4				40	433 480		433 480	160		144
"		SE 1/4 of NE 1/4				40	433 480		433 480	160		144
Richard N. Gardner		NE 1/4 of NW 1/4 " 3				35 15	506 561		506 561	187		169
P. F. Caspers		NW 1/4 of NW 1/4 " 4				35 30	506 561		506 561	187		169
Richard N. Gardner		SW 1/4 of NW 1/4				40	541 600		541 600	200		180
"		SE 1/4 of NW 1/4				40	541 600		541 600	200		180
Sofia Goplen		NE 1/4 of SW 1/4				40	514 570		514 570	190		171
"		NW 1/4 of SW 1/4				40	595 660		595 660	220		198
"		SW 1/4 of SW 1/4				40	595 660	561 630	1157 290	430		385
"		SE 1/4 of SW 1/4				40	433 480		433 480	160		144
Sophia O. A. Goplen		NE 1/4 of SE 1/4				40	433 480		433 480	160		144
Katie Stehly		NW 1/4 of SE 1/4				40	541 600		541 600	200		180
"		SW 1/4 of SE 1/4				40	541 600		541 600	200		180
"		SE 1/4 of SE 1/4				40	541 600		541 600	200		180
						620 33	9192	630	9822	3274		2946
							8789	561	8850			2950
							8291	561				

NAME OF OWNER	No. of School Dist.	DESCRIPTION	ASSESSOR'S VALUATIONS					EQUALIZED VALUATIONS				
			Sec. or Lot	Twp. or Block	Range	Number of Acres	True and Full Value of Lands Exclusive of Structures and Improvements	STRUCTURES AND IMPROVEMENTS True and Full Value of Buildings and Other Structures	True and Full Value of Machinery Permanently Attached to Real Estate	Total True and Full Value of Lands Including all Structures, Improvements and Machinery	Assessed Value of Lands Including all Structures, Improvements and Machinery	Assessed Value as Equalized by Board of Review
R. A. Zuade		NE 1/4 of NE 1/4 Lot 1	6	134	31	35 78	452 501		452 501	167		151
Wm. Thompson Cornell College A. D. Kleinman		NW 1/4 of NE 1/4 " 2				36 58	452 501		452 501	167		151
"		SW 1/4 of NE 1/4				40	460 510		460 510	170		153
R. A. Zuade		SE 1/4 of NE 1/4				40	379 420		379 420	140		126
Hans & Margrethe Anderson		Lots 12-13-14				135 56	1751 935	428 480	2173 2415	805		724
John O. Johnson		NE 1/4 of NW 1/4 Lot 3				37 38	520 576		520 576	192		173
"		NW 1/4 of NW 1/4 " 4				38 18	520 576		520 576	192		173
"		SW 1/4 of NW 1/4 " 8				40	520 576		520 576	192		173
"		SE 1/4 of NW 1/4 " 9				40	541 600		541 600	200		180
Pauley Sheldon		NE 1/4 of SW 1/4 " 10				40	541 600		541 600	200		180
"		NW 1/4 of SW 1/4 " 11				40	541 600		541 600	200		180
"		SW 1/4 of SW 1/4 " 15				40	541 600		541 600	200		180
"		SE 1/4 of SW 1/4 " 16				40	541 600		541 600	200		180
R. A. Zuade		NE 1/4 of SE 1/4				40	595 660		595 660	220		198
Pauley Sheldon		NW 1/4 of SE 1/4				40	541 600		541 600	200		180
"		SW 1/4 of SE 1/4				40	560 621	401 450	961 071	357		320
R. A. Zuade		SE 1/4 of SE 1/4				40	541 600		541 600	200		180
Union Central Lf Ins. Co.		Lots 5-6-7				137 24	16871 870	27530 9	1962 2179	7264		654
						900 72	12946	1289	14185	4728		4256
							11677	1104	12781			4260
							11677	1104				

32 Assessor's Return of Taxable Real Property in the Town of May, County of Cass, Minn., for the Year 1930.
 Unplatted Real Estate—Assessed at 33 1-3 per cent of True and Full Value.

NAME OF OWNER	No. of School Dist.	DESCRIPTION	ASSESSOR'S VALUATIONS						EQUALIZED VALUATIONS						
			Sec. or Lot	Twp. or Block	Range	Number of Acres		True and Full Value of Lands Exclusive of Structures and Improvements Dollars	STRUCTURES AND IMPROVEMENTS		Total True and Full Value of Lands Including all Structures, Improvements and Machinery Dollars	Assessed Value of Lands Including all Structures, Improvements and Machinery Dollars	Assessed Value as Equalized by Board of Review Dollars	Assessed Value as Equalized by the County Board Dollars	Assessed Value as Equalized by the Minnesota Tax Commission Dollars
						Acres	100ths		True and Full Value of Buildings and Other Structures Dollars	True and Full Value of Machinery Permanently Attached to Real Estate Dollars					
G. W. Nassom		NE 1/4 of NE 1/4	7	134	31	40	717	795	361	405	1078	1200	100	359	
"		NW 1/4 of NE 1/4				40	514	570			514	570	190	171	
"		SW 1/4 of NE 1/4				40	555	615			555	615	205	185	
"		SE 1/4 of NE 1/4				40	492	546			492	546	182	164	
State of Minn. (Dept. of general credits)		Lots 10-11-12				138	16	1194	1324	338	278	1532	1703	568	511
J. Zindall		NE 1/4 of NW 1/4 Lot 1				40	541	600			541	600	200	180	
"		NW 1/4 of NW 1/4 " 2				40	541	600			541	600	200	180	
"		SW 1/4 of NW 1/4 " 6				40	541	600			541	600	200	180	
"		SE 1/4 of NW 1/4 " 7				40	541	600			541	600	200	180	
"		Lots 3-4-5				134	48	1932	2142			1932	2142	714	644
Geo. W. Nassom		NE 1/4 of SW 1/4 Lot 8				40	433	480			433	480	160	144	
L. E. Thorne		NW 1/4 of SW 1/4 " 9				40	541	600			541	600	200	180	
"		SW 1/4 of SW 1/4 " 13				40	541	600			541	600	200	180	
Geo. W. Nassom		SE 1/4 of SW 1/4 " 14				40	433	480			433	480	160	144	
"		NE 1/4 of SE 1/4				40	555	615			555	615	205	185	
"		NW 1/4 of SE 1/4				40	514	570			514	570	190	171	
"		SW 1/4 of SE 1/4				40	555	615			555	615	205	185	
"		SE 1/4 of SE 1/4				40	636	705			636	705	235	212	
						92	64	13057	784			13841	4614	4155	
								11776	699			12475		4158	
								11777	699						

Assessor's Return of Taxable Real Property in the Town of May, County of Cass, Minn., for the Year 1930. 33
 Unplatted Real Estate—Assessed at 33 1-3 per cent of True and Full Value.

NAME OF OWNER	No. of School Dist.	DESCRIPTION	ASSESSOR'S VALUATIONS						EQUALIZED VALUATIONS						
			Sec. or Lot	Twp. or Block	Range	Number of Acres		True and Full Value of Lands Exclusive of Structures and Other Improvements Dollars	STRUCTURES AND IMPROVEMENTS		Total True and Full Value of Lands Including all Structures, Improvements and Machinery Dollars	Assessed Value of Lands Including all Structures, Improvements and Machinery Dollars	Assessed Value as Equalized by Board of Review Dollars	Assessed Value as Equalized by the County Board Dollars	Assessed Value as Equalized by the Minnesota Tax Commission Dollars
						Acres	100ths		True and Full Value of Buildings and Other Structures Dollars	True and Full Value of Machinery Permanently Attached to Real Estate Dollars					
W. Durbin		NE 1/4 of NE 1/4	8	134	31	40	575	600			575	600	220	198	
"		NW 1/4 of NE 1/4				40	498	552			498	552	184	166	
"		SW 1/4 of NE 1/4				40	433	480			433	480	160	144	
"		SE 1/4 of NE 1/4				40	649	720	454	510	1103	1270	410	368	
M. Kendall		NE 1/4 of NW 1/4				40	541	600			541	600	200	180	
"		NW 1/4 of NW 1/4				40	541	600			541	600	200	180	
Page C. Andrus		SW 1/4 of NW 1/4				40	541	600			541	600	200	180	
"		SE 1/4 of NW 1/4				40	541	600			541	600	200	180	
"		NE 1/4 of SW 1/4				40	541	600			541	600	200	180	
"		NW 1/4 of SW 1/4				40	541	600			541	600	200	180	
J. B. Walker		SW 1/4 of SW 1/4				40	541	600			541	600	200	180	
"		SE 1/4 of SW 1/4				40	541	600			541	600	200	180	
Clara E. Green, Emma P. Locken		NE 1/4 of SE 1/4				40	568	630			568	630	210	189	
"		NW 1/4 of SE 1/4				40	363	402			363	402	134	121	
"		SW 1/4 of SE 1/4				40	509	564			509	564	188	170	
"		SE 1/4 of SE 1/4				40	655	726	262	294	917	1020	340	306	
						640	9524	804			10339	3446		3102	
							8598	716			9314			3105	
							8600	716							

Assessor's Return of Taxable Real Property in the Town of May, County of Cass, Minn., for the Year 1930.

Unplatted Real Estate—Assessed at 33 1-3 per cent of True and Full Value.

NAME OF OWNER	No. of School Dist.	DESCRIPTION	ASSESSOR'S VALUATIONS					EQUALIZED VALUATIONS					
			Subdivision	Sec. or Lot	Twp. or Block	Range	Number of Acres	STRUCTURES AND IMPROVEMENTS		Assessed Value of Lands Including all Structures, Improvements and Machinery Dollars	Assessed Value as Equalized by Board of Review Dollars	Assessed Value as Equalized by the County Board Dollars	Assessed Value as Equalized by the Minnesota Tax Commission Dollars
								True and Full Value of Lands Exclusive of Structures and Improvements Dollars	True and Full Value of Buildings and Other Structures Dollars				
A. Samuelson		NE 1/4 of NE 1/4		9	134	31	40	541 600	541 600	200	180		
Retta Durbin		NW 1/4 of NE 1/4				40	433 480	433 480	160	144			
"		SW 1/4 of NE 1/4				40	433 480	433 480	160	144			
Janette McCormick		SE 1/4 of NE 1/4				40	541 600	541 600	200	180			
John Coleman		NE 1/4 of NW 1/4				40	530 588	530 588	196	177			
"		NW 1/4 of NW 1/4				40	433 480	433 480	160	144			
"		SW 1/4 of NW 1/4				40	474 525 369 414	843 939	313	281			
"		SE 1/4 of NW 1/4				40	570 565	570 565	288	170			
A. Samuelson		NE 1/4 of SW 1/4				40	541 600	541 600	200	180			
Berit Hoogheem		NW 1/4 of SW 1/4				40	547 606 428 480	975 1086	362	325			
"		SW 1/4 of SW 1/4				40	563 624	563 624	208	188			
Sam Niederhoff		SE 1/4 of SW 1/4				40	609 675	609 675	225	203			
Raymond Martin		NE 1/4 of SE 1/4				40	617 684	617 684	228	206			
A. Samuelson		NW 1/4 of SE 1/4				40	541 600	541 600	200	180			
J. R. Martin		SW 1/4 of SE 1/4				40	530 588	530 588	196	177			
"		SE 1/4 of SE 1/4				40	544 603 187 210	731 813	271	244			
						640	9298 1104	10400	3469	3123			
							8387 984	9371		3124			
							8387 984						

Assessor's Return of Taxable Real Property in the Town of May, County of Cass, Minn., for the Year 1930.

Unplatted Real Estate—Assessed at 33 1-3 per cent of True and Full Value.

NAME OF OWNER	No. of School Dist.	DESCRIPTION	ASSESSOR'S VALUATIONS					EQUALIZED VALUATIONS					
			Subdivision	Sec. or Lot	Twp. or Block	Range	Number of Acres	STRUCTURES AND IMPROVEMENTS		Assessed Value of Lands Including all Structures, Improvements and Machinery Dollars	Assessed Value as Equalized by Board of Review Dollars	Assessed Value as Equalized by the County Board Dollars	Assessed Value as Equalized by the Minnesota Tax Commission Dollars
								True and Full Value of Lands Exclusive of Structures and Improvements Dollars	True and Full Value of Buildings and Other Structures Dollars				
First Nat'l Bk. Motley		NE 1/4 of NE 1/4		10	134	31	40	541 600	541 600	200	180		
Fidelity Finance Corporation		NW 1/4 of NE 1/4				40	549 609	549 609	203	183			
"		SW 1/4 of NE 1/4				40	549 609	549 609	203	183			
"		SE 1/4 of NE 1/4				40	568 630	568 630	210	189			
Andrew & Ingva Kvam		NE 1/4 of NW 1/4				40	549 609	549 609	203	183			
"		NW 1/4 of NW 1/4				40	541 600	541 600	200	180			
"		SW 1/4 of NW 1/4				40	541 600	541 600	200	180			
"		SE 1/4 of NW 1/4				40	549 609	549 609	203	183			
First Nat'l Bk. Motley		NE 1/4 of SW 1/4				40	541 600	541 600	200	180			
G. F. Rabblom		NW 1/4 of SW 1/4				40	587 651	587 651	217	196			
"		SW 1/4 of SW 1/4				40	574 636 187 210	761 846	282	254			
First Nat'l Bk. Motley		SE 1/4 of SW 1/4				40	433 480	433 480	160	144			
Clifford S. Green		NE 1/4 of SE 1/4				40	574 636	574 636	212	191			
First Nat'l Bk. Motley		NW 1/4 of SE 1/4				40	541 600	541 600	200	180			
"		SW 1/4 of SE 1/4				40	541 600	541 600	200	180			
Clifford S. Greene		SE 1/4 of SE 1/4				40	474 525 453 508	927 1032	344	309			
						640	9594 918	10312	3437	3095			
							8652 640	9292		3098			
							8652 640						

Assessor's Return of Taxable Real Property in the Town of May, County of Cass, Minn., for the Year 1930.

Unplatted Real Estate—Assessed at 33 1-3 per cent of True and Full Value.

Table with columns: NAME OF OWNER, No. of School Dist., DESCRIPTION, ASSESSOR'S VALUATIONS (True and Full Value, Structures and Improvements, Total True and Full Value, Assessed Value), EQUALIZED VALUATIONS (Assessed Value as Equalized by Board of Review, Assessed Value as Equalized by the County Board, Assessed Value as Equalized by the Minnesota Tax Commission).

Assessor's Return of Taxable Real Property in the Town of May, County of Cass, Minn., for the Year 1930.

Unplatted Real Estate—Assessed at 33 1-3 per cent of True and Full Value.

Table with columns: NAME OF OWNER, No. of School Dist., DESCRIPTION, ASSESSOR'S VALUATIONS (True and Full Value, Structures and Improvements, Total True and Full Value, Assessed Value), EQUALIZED VALUATIONS (Assessed Value as Equalized by Board of Review, Assessed Value as Equalized by the County Board, Assessed Value as Equalized by the Minnesota Tax Commission).

Assessor's Return of Taxable Real Property in the Town of May, County of Cass, Minn., for the Year 1930.

Unplatted Real Estate—Assessed at 33 1-3 per cent of True and Full Value.

NAME OF OWNER	No. of School Dist.	DESCRIPTION	ASSESSOR'S VALUATIONS					EQUALIZED VALUATIONS							
			Subdivision	Sec. or Lot	Twp. or Block	Range	Number of Acres	True and Full Value of Land Exclusive of Structures and Improvements	STRUCTURES AND IMPROVEMENTS		Total True and Full Value of Land Including all Structures, Improvements and Machinery	Assessed Value of Land Including all Structures, Improvements and Machinery	Assessed Value as Equalized by Board of Review	Assessed Value as Equalized by the County Board	Assessed Value as Equalized by the Minnesota Tax Commission
									True and Full Value of Buildings and Other Structures	True and Full Value of Machinery Permanently Attached to Real Estate					
<u>Ed. Bollen</u>		NE 1/4 of NE 1/4		13	134	31	40	441489		441489	163		147		
<u>J. H. Phaff</u>		NW 1/4 of NE 1/4				40	441489		441489	163			147		
<u>Union Central Life Ins. Co.</u>		SW 1/4 of NE 1/4				40	541600		541600	200			180		
"		SE 1/4 of NE 1/4				40	541600		541600	200			180		
<u>Paul E. & Fred C. Riedel</u>		NE 1/4 of NW 1/4				40	514570	230258	744828	276			248		
<u>J. R. Mannin</u>		NW 1/4 of NW 1/4				40	541600		541600	200			180		
<u>Uranon & Harry Griffith</u>		SW 1/4 of NW 1/4				40	609675		609675	225			203		
<u>Paul E. & Fred C. Riedel</u>		SE 1/4 of NW 1/4				40	555615		555615	200			185		
<u>Chas. Peterreins</u>		NE 1/4 of SW 1/4				40	636705		636705	235			212		
<u>J. R. Mannin</u>		NW 1/4 of SW 1/4				40	595660	187210	782870	290			261		
<u>Chas. Peterreins</u>		SW 1/4 of SW 1/4				40	717795		717795	265			239		
"		SE 1/4 of SW 1/4				40	595660		595660	220			198		
<u>Frank Swanson</u>		NE 1/4 of SE 1/4				40	533591		533591	197			178		
<u>Chris Medman</u>		NW 1/4 of SE 1/4				40	36240	1233262	595662	221			198		
"		SW 1/4 of SE 1/4				40	547606		547606	202			182		
"		SE 1/4 of SE 1/4				40	595660	436489	1031149	383			344		
						640	9716	1219	10935	3645			3282		
							8763	1086	9849				3283		
							1764	1096							

Assessor's Return of Taxable Real Property in the Town of May, County of Cass, Minn., for the Year 1930.

Unplatted Real Estate—Assessed at 33 1-3 per cent of True and Full Value.

NAME OF OWNER	No. of School Dist.	DESCRIPTION	ASSESSOR'S VALUATIONS					EQUALIZED VALUATIONS							
			Subdivision	Sec. or Lot	Twp. or Block	Range	Number of Acres	True and Full Value of Land Exclusive of Structures and Improvements	STRUCTURES AND IMPROVEMENTS		Total True and Full Value of Land Including all Structures, Improvements and Machinery	Assessed Value of Land Including all Structures, Improvements and Machinery	Assessed Value as Equalized by Board of Review	Assessed Value as Equalized by the County Board	Assessed Value as Equalized by the Minnesota Tax Commission
									True and Full Value of Buildings and Other Structures	True and Full Value of Machinery Permanently Attached to Real Estate					
<u>Tanson Tugate</u>		NE 1/4 of NE 1/4		14	134	31	39	487540		487540	180		162		
"		NW 1/4 of NE 1/4				40	487540		487540	180			162		
<u>Sweet & Ingelbrotson</u>		SW 1/4 of NE 1/4				40	509564		509564	188			170		
<u>Paul R. and Fred C. Riedel</u>		SE 1/4 of NE 1/4				40	509564	267300	776864	288			259		
<u>Modern Woodmen of America</u>		1 ac of NE 1/4 of NE 1/4				1	141540	1450	413465	155			138		
<u>J. A. Ackerson</u>		NE 1/4 of NW 1/4				40	460510		460510	170			153		
<u>Wm. Crocker</u>		NW 1/4 of NW 1/4				40	474525		474525	175			158		
"		SW 1/4 of NW 1/4				40	636705		636705	235			212		
"		SE 1/4 of NW 1/4				40	595660		595660	220			198		
<u>H. A. Williams</u>		NE 1/4 of SW 1/4				40	433480		433480	160			144		
"		NW 1/4 of SW 1/4				40	487540	428480	915920	340			305		
"		SW 1/4 of SW 1/4				40	603669	480	603669	223			201		
<u>John M. Schmit</u>		SE 1/4 of SW 1/4				40	433480		433480	160			144		
<u>Christian E. Waldt</u>		NE 1/4 of SE 1/4				40	433480		433480	160			144		
"		NW 1/4 of SE 1/4				40	433480		433480	160			144		
"		SW 1/4 of SE 1/4				40	595660	8899	683789	253			228		
"		SE 1/4 of SE 1/4				40	595660		595660	220			198		
						640	90725	1329	10401	3464			3120		
							8183	1184	9367				3122		
							2183	1484							

Assessor's Return of Taxable Real Property in the Town of May, County of Cass, Minn., for the Year 1930.

Unplatted Real Estate—Assessed at 33 1-3 per cent of True and Full Value.

Table with columns: NAME OF OWNER, No. of School Dist., DESCRIPTION, ASSESSOR'S VALUATIONS (True and Full Value of Lands, Structures and Improvements, etc.), EQUALIZED VALUATIONS (Assessed Value as Equalized by Board of Review, etc.).

Assessor's Return of Taxable Real Property in the Town of May, County of Cass, Minn., for the Year 1930.

Unplatted Real Estate—Assessed at 33 1-3 per cent of True and Full Value.

Table with columns: NAME OF OWNER, No. of School Dist., DESCRIPTION, ASSESSOR'S VALUATIONS (True and Full Value of Lands, Structures and Improvements, etc.), EQUALIZED VALUATIONS (Assessed Value as Equalized by Board of Review, etc.).

Assessor's Return of Taxable Real Property in the Town of May, County of Cass, Minn., for the Year 1930.

Unplatted Real Estate—Assessed at 33 1-3 per cent of True and Full Value.

Table with columns: NAME OF OWNER, No. of School Dist., DESCRIPTION, ASSESSOR'S VALUATIONS (True and Full Value of Lands, Structures and Improvements, Total True and Full Value), and EQUALIZED VALUATIONS (Assessed Value as Equalized by Board of Review, Assessed Value as Equalized by the County Board, Assessed Value as Equalized by the Minnesota Tax Commission).

Assessor's Return of Taxable Real Property in the Town of May, County of Cass, Minn., for the Year 1930.

Unplatted Real Estate—Assessed at 33 1-3 per cent of True and Full Value.

Table with columns: NAME OF OWNER, No. of School Dist., DESCRIPTION, ASSESSOR'S VALUATIONS (True and Full Value of Lands, Structures and Improvements, Total True and Full Value), and EQUALIZED VALUATIONS (Assessed Value as Equalized by Board of Review, Assessed Value as Equalized by the County Board, Assessed Value as Equalized by the Minnesota Tax Commission).

Assessor's Return of Taxable Real Property in the Town of May, County of Cass, Minn., for the Year 1930.

Unplatted Real Estate—Assessed at 33 1-3 per cent of True and Full Value.

NAME OF OWNER	No. of School Dist.	DESCRIPTION	ASSESSOR'S VALUATIONS					EQUALIZED VALUATIONS					
			Sec. or Lot	Twp. or Block	Range	Number of Acres	True and Full Value of Lands Including Structures and Improvements	True and Full Value of Buildings and Other Structures	True and Full Value of Machinery Permanently Attached to Real Estate	Total True and Full Value of Lands Including all Structures, Improvements and Machinery	Assessed Value Including all Structures, Improvements and Machinery	Assessed Value as Equalized by Board of Review	Assessed Value as Equalized by the County Board
B. J. Prettyman		NE 1/4 of NE 1/4	19	34	31	40	541 600	248 278	789 878	326			263
"		NW 1/4 of NE 1/4				40	555 615		555 615	205			185
"		SW 1/4 of NE 1/4				40	541 600		541 600	200			180
"		SE 1/4 of NE 1/4				40	541 600		541 600	200			180
First National Bank, Mpls Peter Peterson		Lots 3-4-5-6				144	882 130	236 114 2 159	227 252 0	840			757
"		NE 1/4 of NW 1/4 Lot 1				40	541 600	33 4 375	875 975	325			292
"		NW 1/4 of NW 1/4 " 2				40	552 612		552 612	204			184
Anton Thoma Peter Peterson		SW 1/4 of NW 1/4 " 7				40	487 540		487 540	180			162
" Palmer Goplen		SE 1/4 of NW 1/4 " 8				40	414 459		414 459	153			138
"		Lots 11-12-13-14				149	862 178	2415 551 615	2729 3033	1011			910
"		NE 1/4 of SW 1/4 Lot 9				40	433 480		433 480	160			144
Anton Thoma Palmer Goplen		NW 1/4 of SW 1/4 " 10				40	271 300		271 300	100			90
"		SW 1/4 of SW 1/4 " 15 less 1 acre church				39	325 360		325 360	120			108
"		SE 1/4 of SW 1/4 " 16				40	433 480		433 480	160			144
Anton Probstater		NE 1/4 of SE 1/4				40	541 600		541 600	200			180
"		NW 1/4 of SE 1/4				40	541 600		541 600	200			180
"		SW 1/4 of SE 1/4				40	541 600		541 600	200			180
"		SE 1/4 of SE 1/4				40	541 600		541 600	200			180
						933 76	13 420	1430	14852	4951			4457
							12106	1275	13381				4460
							12107	1274					

Assessor's Return of Taxable Real Property in the Town of May, County of Cass, Minn., for the Year 1930.

Unplatted Real Estate—Assessed at 33 1-3 per cent of True and Full Value.

NAME OF OWNER	No. of School Dist.	DESCRIPTION	ASSESSOR'S VALUATIONS					EQUALIZED VALUATIONS					
			Sec. or Lot	Twp. or Block	Range	Number of Acres	True and Full Value of Lands Including Structures and Improvements	True and Full Value of Buildings and Other Structures	True and Full Value of Machinery Permanently Attached to Real Estate	Total True and Full Value of Lands Including all Structures, Improvements and Machinery	Assessed Value Including all Structures, Improvements and Machinery	Assessed Value as Equalized by Board of Review	Assessed Value as Equalized by the County Board
O. Klingbeil		NE 1/4 of NE 1/4	20	34	31	40	442 490	363 408	805 898	299			268
"		NW 1/4 of NE 1/4				40	528 585		528 585	195			176
"		SW 1/4 of NE 1/4				40	555 615		555 615	205			185
Alfred A. Anderson		SE 1/4 of NE 1/4				40	487 540		487 540	180			162
Arthur Klingbeil		NE 1/4 of NW 1/4				40	406 450		406 450	150			135
A. S. Sperry		NW 1/4 of NW 1/4				40	460 510		460 510	170			153
"		SW 1/4 of NW 1/4				40	460 510		460 510	170			153
Arthur Klingbeil		SE 1/4 of NW 1/4				40	406 450		406 450	150			135
B. J. Prettyman		NE 1/4 of SW 1/4				40	433 480		433 480	160			144
A. S. Sperry		NW 1/4 of SW 1/4				40	541 600		541 600	200			180
"		SW 1/4 of SW 1/4				40	514 570		514 570	190			171
B. J. Prettyman		SE 1/4 of SW 1/4				40	433 480		433 480	160			144
Alfred A. Anderson		NE 1/4 of SE 1/4				40	563 624		563 624	208			188
O. Klingbeil		NW 1/4 of SE 1/4				40	563 624		563 624	208			188
Alfred A. Anderson		SW 1/4 of SE 1/4				40	595 660	428 480	1023 1140	380			341
"		SE 1/4 of SE 1/4				40	575 660		575 660	220			198
						640	8846	887	9735	3245			2921
							7981	791	8772				2924
							7981	796					

Assessor's Return of Taxable Real Property in the Town of May, County of Cass, Minn., for the Year 1930.

Unplatted Real Estate—Assessed at 33 1-3 per cent of True and Full Value.

NAME OF OWNER	No. of School Dist.	DESCRIPTION	Sec. or Lot	Twp. or Block	Range	Number of Acres		ASSESSOR'S VALUATIONS				EQUALIZED VALUATIONS			
						Acres	100ths	True and Full Value of Lands Exclusive of Structures and Improvements Dollars	STRUCTURES AND IMPROVEMENTS		Total True and Full Value of Lands Including all Structures, Improvements and Machinery Dollars	Assessed Value of Lands Including all Structures, Improvements and Machinery Dollars	Assessed Value as Equalized by Board of Review Dollars	Assessed Value as Equalized by the County Board Dollars	Assessed Value as Equalized by the Minnesota Tax Commission Dollars
									True and Full Value of Buildings and Other Structures Dollars	True and Full Value of Machinery Permanently Attached to Real Estate Dollars					
Peoples State Bank Matley		NE 1/4 of NE 1/4	21	134	31	40	525	582 33	4375	859	957	319	286		
"		NW 1/4 of NE 1/4				40	525	582		525	582	194	175		
C. R. Anderson		SW 1/4 of NE 1/4				40	622	690		622	690	230	207		
"		SE 1/4 of NE 1/4				40	525	582 48	1540	1006	1122	374	335		
P. F. Caspers		NE 1/4 of NW 1/4				40	582	645		582	645	215	194		
"		NW 1/4 of NW 1/4				40	582	645		582	645	215	194		
"		SW 1/4 of NW 1/4				40	541	600		541	600	200	180		
"		SE 1/4 of NW 1/4				40	541	600		541	600	200	180		
Edwin Eggen		NE 1/4 of SW 1/4				40	541	600		541	600	200	180		
"		NW 1/4 of SW 1/4				40	549	609		549	609	203	183		
"		SW 1/4 of SW 1/4				40	541	600		541	600	200	180		
Henry Pietz		SE 1/4 of SW 1/4				40	460	510 98	99	548	609	203	183		
E. M. Pietz		NE 1/4 of SE 1/4				40	541	600 195	219	736	819	273	245		
"		NW 1/4 of SE 1/4				40	506	566		506	561	187	169		
Emma Pietz		SW 1/4 of SE 1/4 <i>used as for church</i>				39	433	480		433	480	110	144		
Geo L Williams		SE 1/4 of SE 1/4				40	506	561 267	300	773	862	287	258		
						639	9447	1533		10960	3660		3293		
							8520	1365		9885			3295		
							8521	1366							

Assessor's Return of Taxable Real Property in the Town of May, County of Cass, Minn., for the Year 1930.

Unplatted Real Estate—Assessed at 33 1-3 per cent of True and Full Value.

NAME OF OWNER	No. of School Dist.	DESCRIPTION	Sec. or Lot	Twp. or Block	Range	Number of Acres		ASSESSOR'S VALUATIONS				EQUALIZED VALUATIONS			
						Acres	100ths	True and Full Value of Lands Exclusive of Structures and Improvements Dollars	STRUCTURES AND IMPROVEMENTS		Total True and Full Value of Lands Including all Structures, Improvements and Machinery Dollars	Assessed Value of Lands Including all Structures, Improvements and Machinery Dollars	Assessed Value as Equalized by Board of Review Dollars	Assessed Value as Equalized by the County Board Dollars	Assessed Value as Equalized by the Minnesota Tax Commission Dollars
									True and Full Value of Buildings and Other Structures Dollars	True and Full Value of Machinery Permanently Attached to Real Estate Dollars					
Myra F. Powell		NE 1/4 of NE 1/4	22	134	31	40	290	321		290	321	107	97		
"		NW 1/4 of NE 1/4				40	444	492 107	120	551	612	204	184		
"		SW 1/4 of NE 1/4				40	235	262		235	262	89	78		
"		SE 1/4 of NE 1/4				40	395	438		395	438	146	132		
Oliver Kinneberg		NE 1/4 of NW 1/4				40	541	600		541	600	200	180		
A. Roddean		NW 1/4 of NW 1/4				40	541	600		541	600	200	180		
"		SW 1/4 of NW 1/4				40	541	600		541	600	200	180		
Oliver Kinneberg		SE 1/4 of NW 1/4				40	541	600		541	600	200	180		
"		NE 1/4 of SW 1/4				40	541	600		541	600	200	180		
A. Roddean		NW 1/4 of SW 1/4				40	541	600		541	600	200	180		
Geo L. Williams		SW 1/4 of SW 1/4				40	568	630		568	630	210	189		
Oliver Kinneberg		SE 1/4 of SW 1/4				40	541	600		541	600	200	180		
Wm Munsterman		NE 1/4 of SE 1/4				40	582	645		582	645	215	194		
Wm Fred Berndt		NW 1/4 of SE 1/4				40	568	630		568	630	210	189		
"		SW 1/4 of SE 1/4				40	568	630 374	420	942	1050	350	314		
Wm Munsterman		SE 1/4 of SE 1/4				40	582	645		582	645	215	194		
						640	6892	540		9482	3142		2831		
							8019	481		8500			2833		
							8021	481							

Assessor's Return of Taxable Real Property in the Dawn of May, County of Cass, Minn., for the Year 1930.

Unplatted Real Estate—Assessed at 33 1-3 per cent of True and Full Value.

MADE IN ST. CLOUD BY THE FRITZ-GROSS CO.

NAME OF OWNER	No. of School or Dist.	DESCRIPTION	ASSESSOR'S VALUATIONS						EQUALIZED VALUATIONS						
			Sec. Lot	Twp. Block	Range	Number of Acres		True and Full Value of Lands Exclusive of Structures and Improvements Dollars	STRUCTURES AND IMPROVEMENTS		Total True and Full Value of Lands Including all Structures, Improvements and Machinery Dollars	Assessed Value of Lands Including all Structures, Improvements and Machinery Dollars	Assessed Value as Equalized by Board of Review Dollars	Assessed Value as Equalized by the County Board Dollars	Assessed Value as Equalized by the Minnesota Tax Commission Dollars
						Acres	100ths		True and Full Value of Buildings and Other Structures Dollars	True and Full Value of Permanently Attached to Real Estate Machinery Dollars					
Albert Ellgen		NE 1/4 of NE 1/4	23	134	31	40		717	795	717	795	265	239		
"		NW 1/4 of NE 1/4				40		433	480	433	480	160	144		
"		SW 1/4 of NE 1/4				40		595	660	595	660	220	198		
N. Benedix		SE 1/4 of NE 1/4				40		693	768	484	543	177	131	437	392
H.G. Mc Innis		NE 1/4 of NW 1/4				40		514	570	514	570	190	171		
Otto Kober		NW 1/4 of NW 1/4				40		364	403	601	675	966	1079	389	322
Jam Harwegs		SW 1/4 of NW 1/4				40		677	750	677	750	250	226		
"		SE 1/4 of NW 1/4				40		363	402	363	402	134	121		
"		NE 1/4 of SW 1/4				40		460	510	460	510	170	153		
"		NW 1/4 of SW 1/4				40		406	450	406	450	150	135		
"		SW 1/4 of SW 1/4				40		363	402	543	609	906	1012	337	302
"		SE 1/4 of SW 1/4				40		587	651	587	651	217	196		
N. Benedix		NE 1/4 of SE 1/4				40		555	615	555	615	205	185		
"		NW 1/4 of SE 1/4				40		582	645	582	645	210	194		
"		SW 1/4 of SE 1/4				40		541	600	541	600	200	180		
"		SE 1/4 of SE 1/4				40		541	600	541	600	200	180		
						640		9301	1927	11125	3709	3338			
								8391	1628	10019		3340			
								8390	1628						

Assessor's Return of Taxable Real Property in the Dawn of May, County of Cass, Minn., for the Year 1930.

Unplatted Real Estate—Assessed at 33 1-3 per cent of True and Full Value.

NAME OF OWNER	No. of School or Dist.	DESCRIPTION	ASSESSOR'S VALUATIONS						EQUALIZED VALUATIONS						
			Sec. Lot	Twp. Block	Range	Number of Acres		True and Full Value of Lands Exclusive of Structures and Other Improvements Dollars	STRUCTURES AND IMPROVEMENTS		Total True and Full Value of Lands Including all Structures, Improvements and Machinery Dollars	Assessed Value of Lands Including all Structures, Improvements and Machinery Dollars	Assessed Value as Equalized by Board of Review Dollars	Assessed Value as Equalized by the County Board Dollars	Assessed Value as Equalized by the Minnesota Tax Commission Dollars
						Acres	100ths		True and Full Value of Buildings and Other Structures Dollars	True and Full Value of Permanently Attached to Real Estate Machinery Dollars					
Orlando Rogers		NE 1/4 of NE 1/4	24	134	31	40		595	660	321	360	916	1020	340	305
"		NW 1/4 of NE 1/4				40		433	480	433	480	160	144		
"		SW 1/4 of NE 1/4				40		433	480	433	480	160	144		
"		SE 1/4 of NE 1/4				40		595	660	595	660	220	198		
Chas Peterreins		NE 1/4 of NW 1/4				40		487	540	514	580	1006	1122	374	335
"		NW 1/4 of NW 1/4				40		571	633	571	633	211	190		
"		SW 1/4 of NW 1/4				40		490	543	490	543	181	163		
"		SE 1/4 of NW 1/4				40		411	456	411	456	152	137		
Vernon Harry Griffith		NE 1/4 of SW 1/4				40		622	690	401	450	1023	1140	350	341
"		NW 1/4 of SW 1/4				40		655	726	655	726	242	218		
"		SW 1/4 of SW 1/4				40		560	620	560	621	207	187		
"		SE 1/4 of SW 1/4				40		560	620	560	621	207	187		
Geo E. Peterreins		NE 1/4 of SE 1/4				40		555	615	555	615	205	185		
"		NW 1/4 of SE 1/4				40		379	420	379	420	140	126		
"		SW 1/4 of SE 1/4				40		549	609	549	609	203	183		
"		SE 1/4 of SE 1/4				40		579	642	588	660	1167	1302	434	389
						640		9395	2052	11448	3916	3432			
								8474	1829	10303		3734			
								8475	1828						

Unplatted Real Estate—Assessed at 33 1-3 per cent of True and Full Value.

NAME OF OWNER	No. of School Dist.	SUBDIVISION	DESCRIPTION			ASSESSOR'S VALUATIONS				EQUALIZED VALUATIONS		
			Sec. or Lot	Twp. or Block	Range	Number of Acres	True and Full Value of Land Exclusive of Structures and Improvements Dollars	STRUCTURES AND IMPROVEMENTS True and Full Value of Buildings and Other Structures Dollars	True and Full Value of Machinery Permanently Attached to Real Estate Dollars	Total True and Full Value of Land Including all Structures, Improvements and Machinery Dollars	Assessed Value of Land Including all Structures, Improvements and Machinery Dollars	Assessed Value as Equalized by Board of Review Dollars
Ferdinand C. Meier		NE 1/4 of NE 1/4	25	134	31	40	541600		541600	200		180
Ferdinand Meier		NW 1/4 of NE 1/4				40	582645	533600	1117245	415		372
"		SW 1/4 of NE 1/4				40	595660		595660	220		198
Ferdinand C. Meier		SE 1/4 of NE 1/4				40	541600		541600	200		180
Chas. F. Bandlow		NE 1/4 of NW 1/4				40	595660	401450	996110	370		332
"		NW 1/4 of NW 1/4				40	541600		541600	200		180
"		SW 1/4 of NW 1/4				40	541600		541600	200		180
"		SE 1/4 of NW 1/4				40	582645		582645	215		194
William Neigel		NE 1/4 of SW 1/4				40	541600		541600	200		180
"		NW 1/4 of SW 1/4				40	541600		541600	200		180
"		SW 1/4 of SW 1/4				40	568630	401450	9691080	360		323
"		SE 1/4 of SW 1/4				40	568630		568630	210		189
Wm R. Mitton		NE 1/4 of SE 1/4				40	433480		433480	160		144
"		NW 1/4 of SE 1/4				40	636705		636705	235		212
Wm Mitton		SW 1/4 of SE 1/4				40	636705		636705	235		212
"		SE 1/4 of SE 1/4				40	595660	356399	9511059	353		317
						640	10030	1899	11919	5993		3573
							9036	1693	10729			3576
							9032	1694				

Unplatted Real Estate—Assessed at 33 1-3 per cent of True and Full Value.

NAME OF OWNER	No. of School Dist.	SUBDIVISION	DESCRIPTION			ASSESSOR'S VALUATIONS				EQUALIZED VALUATIONS		
			Sec. or Lot	Twp. or Block	Range	Number of Acres	True and Full Value of Land Exclusive of Structures and Improvements Dollars	STRUCTURES AND IMPROVEMENTS True and Full Value of Buildings and Other Structures Dollars	True and Full Value of Machinery Permanently Attached to Real Estate Dollars	Total True and Full Value of Land Including all Structures, Improvements and Machinery Dollars	Assessed Value of Land Including all Structures, Improvements and Machinery Dollars	Assessed Value as Equalized by Board of Review Dollars
Ira Cottingham		NE 1/4 of NE 1/4	26	134	31	40	568630		568630	210		189
"		NW 1/4 of NE 1/4				40	325360	142159	467519	173		156
"		SW 1/4 of NE 1/4				40	487540		487540	180		162
"		SE 1/4 of NE 1/4				40	379420		379420	140		126
State of Minn (Dept of Rural Cr)		NE 1/4 of NW 1/4				40	433480		433480	160		144
"		NW 1/4 of NW 1/4				40	341378		341378	126		114
"		SW 1/4 of NW 1/4				40	636705	110123	746828	276		249
"		SE 1/4 of NW 1/4				40	636705		636705	235		212
"		NE 1/4 of SW 1/4				40	433480		433480	160		144
Matt Loftis		NW 1/4 of SW 1/4				40	514570		514570	190		171
"		SW 1/4 of SW 1/4				40	547606	214240	761846	252		254
State of Minn (Dept of rural cr)		SE 1/4 of SW 1/4				40	433480		433480	160		144
"		NE 1/4 of SE 1/4				40	528585		528585	195		176
"		NW 1/4 of SE 1/4				40	433480		433480	160		144
Thos Horn		SW 1/4 of SE 1/4				40	603669		603669	223		201
"		SE 1/4 of SE 1/4				40	636705	241270	877975	325		292
						640	5793	792	9595	3195		2878
							7932	707	8639			2880
							7931	706				

Assessor's Return of Taxable Real Property in the Town of May, County of Cass, Minn., for the Year 1930.

Unplatted Real Estate—Assessed at 33 1-3 per cent of True and Full Value.

NAME OF OWNER	No. of School or Dist.	DESCRIPTION	ASSESSOR'S VALUATIONS					EQUALIZED VALUATIONS					
			Sec. Lot	Twp. Block	Range	Number of Acres		True and Full Value of Land Exclusive of Structures and Improvements Dollars	STRUCTURES AND IMPROVEMENTS		Assessed Value as Equalized by Board of Review Dollars	Assessed Value as Equalized by the County Board Dollars	Assessed Value as Equalized by the Minnesota Tax Commission Dollars
						Acres	100ths		True and Full Value of Buildings and Other Structures Dollars	True and Full Value of Machinery Permanently Attached to Real Estate Dollars			
Carl Schme		NE 1/4 of NE 1/4	27	134	31	40		449 498	187 210	636 708	236	212	
"		NW 1/4 of NE 1/4				40		460 510		460 510	170	153	
Matt Loftis		SW 1/4 of NE 1/4				40		460 510		460 510	170	153	
"		SE 1/4 of NE 1/4				40		460 510		460 510	170	153	
Anna Elener		NE 1/4 of NW 1/4				40		595 660		595 660	220	198	
Jacob Wendt		NW 1/4 of NW 1/4				40		514 570	160 180	674 750	250	225	
"		SW 1/4 of NW 1/4				40		487 540	267 300	754 840	280	251	
"		SE 1/4 of NW 1/4				40		717 795		717 795	265	239	
Wm Norby		NE 1/4 of SW 1/4				40		549 609		549 609	203	183	
"		NW 1/4 of SW 1/4				40		549 609		549 609	203	183	
St of Minn (Dept of rural credit)		SW 1/4 of SW 1/4				40		390 432		390 432	144	130	
"		SE 1/4 of SW 1/4				40		330 366	88 99	418 465	155	139	
Joe Francisco + John Schmit		NE 1/4 of SE 1/4				40		541 600		541 600	200	180	
"		NW 1/4 of SE 1/4				40		541 600		541 600	200	180	
State of Minn (Dept of rural cr)		SW 1/4 of SE 1/4				40		390 432		390 432	144	130	
Joe Francisco John Schmit		SE 1/4 of SE 1/4				40		541 600		541 600	200	180	
						640		8941	789	9630	3210	2889	
								7973	702	8675		2892	
								7975	103				

Assessor's Return of Taxable Real Property in the Town of May, County of Cass, Minn., for the Year 1930.

Unplatted Real Estate—Assessed at 33 1-3 per cent of True and Full Value.

NAME OF OWNER	No. of School or Dist.	DESCRIPTION	ASSESSOR'S VALUATIONS					EQUALIZED VALUATIONS					
			Sec. Lot	Twp. Block	Range	Number of Acres		True and Full Value of Land Exclusive of Structures and Improvements Dollars	STRUCTURES AND IMPROVEMENTS		Assessed Value as Equalized by Board of Review Dollars	Assessed Value as Equalized by the County Board Dollars	Assessed Value as Equalized by the Minnesota Tax Commission Dollars
						Acres	100ths		True and Full Value of Buildings and Other Structures Dollars	True and Full Value of Machinery Permanently Attached to Real Estate Dollars			
Herman M Pietz		NE 1/4 of NE 1/4	28	134	31	40		636 705		636 705	235	212	
"		NW 1/4 of NE 1/4				40		541 600	134 150	675 750	250	225	
Gust Pietz		SW 1/4 of NE 1/4				40		649 720		649 720	240	216	
"		SE 1/4 of NE 1/4				40		465 516	26 730	732 816	272	244	
Adolph Pietz		NE 1/4 of NW 1/4				40		595 660	409 459	1004 1119	373	335	
Alfred Pietz		NW 1/4 of NW 1/4				40		390	222	574 639	213	191	
Peter Sjowall		SW 1/4 of NW 1/4				40		541 600		541 600	200	180	
Adolph Pietz		SE 1/4 of NW 1/4				40		649 720		649 720	240	216	
J. N. Dundas		NE 1/4 of SW 1/4				40		582 645		582 645	215	194	
Peter Sjowall		NW 1/4 of SW 1/4				40		568 630		568 630	210	189	
Arthur J. Dahl		SW 1/4 of SW 1/4				40		574 626		574 626	212	191	
Henry Strube		SE 1/4 of SW 1/4				40		482 534	200 225	682 759	252	227	
Vernon D. Griffith		NE 1/4 of SE 1/4				40		595 660		595 660	220	198	
"		NW 1/4 of SE 1/4				40		528 555		528 555	195	176	
"		SW 1/4 of SE 1/4				40		541 600		541 600	220	198	
"		SE 1/4 of SE 1/4				39 50		677 750	48 1540	1158 1290	430	386	
"						50		8 9		8 9	3	3	
						640 00		10020	1925	11943	3941	3581	
								9037	1713	10750		3553	
								9038	1713				

54 Assessor's Return of Taxable Real Property in the Town of May, County of Cass, Minn., for the Year 1930.

Unplatted Real Estate—Assessed at 33 1-3 per cent of True and Full Value.

NAME OF OWNER	No. of School Dist.	DESCRIPTION	ASSESSOR'S VALUATIONS				EQUALIZED VALUATIONS					
			Sec. or Lot	Twp. or Block	Range	Number of Acres	True and Full Value of Lands Exclusive of Structures and Improvements	STRUCTURES AND IMPROVEMENTS True and Full Value of Buildings and Other Structures	Total True and Full Value of Lands Including all Structures, Improvements and Machinery	Assessed Value of Lands Including all Structures, Improvements and Machinery	Assessed Value as Equalized by Board of Review	Assessed Value as Equalized by the County Board
Grant Goplen		NE 1/4 of NE 1/4	29	134	31	40	479 531		479 531	177		160
"		NW 1/4 of NE 1/4				40	530 588	222 249	752 837	279		251
"		SW 1/4 of NE 1/4				40	514 570		514 570	190		171
"		SE 1/4 of NE 1/4				40	563 624		563 624	208		188
Hans Polson		NE 1/4 of NW 1/4				40	555 615		555 615	205		185
"		NW 1/4 of NW 1/4				40	560 621	187 210	747 831	277		249
"		SW 1/4 of NW 1/4				40	568 630		568 630	210		189
"		SE 1/4 of NW 1/4				40	568 630		568 630	210		189
St of Minn (Dept of ruraler)		NE 1/4 of SW 1/4				40	560 621		560 621	207		187
"		NW 1/4 of SW 1/4				40	560 621		560 621	207		187
"		SW 1/4 of SW 1/4				40	609 675		609 675	225		203
"		SE 1/4 of SW 1/4				40	582 645		582 645	215		194
"		NE 1/4 of SE 1/4				40	541 600		541 600	200		180
"		NW 1/4 of SE 1/4				40	541 600		541 600	200		180
"		SW 1/4 of SE 1/4				40	568 630	428 480	996 1110	370		332
"		SE 1/4 of SE 1/4				40	568 630		568 630	210		189
						640	9631	939	10770	3590		3234
							8866	837	9703			3284
							8868	829				

Assessor's Return of Taxable Real Property in the Town of May, County of Cass, Minn., for the Year 1930.

Unplatted Real Estate—Assessed at 33 1-3 per cent of True and Full Value.

NAME OF OWNER	No. of School Dist.	DESCRIPTION	ASSESSOR'S VALUATIONS				EQUALIZED VALUATIONS					
			Sec. or Lot	Twp. or Block	Range	Number of Acres	True and Full Value of Lands Exclusive of Structures and Improvements	STRUCTURES AND IMPROVEMENTS True and Full Value of Buildings and Other Structures	Total True and Full Value of Lands Including all Structures, Improvements and Machinery	Assessed Value of Lands Including all Structures, Improvements and Machinery	Assessed Value as Equalized by Board of Review	Assessed Value as Equalized by the County Board
Peter J. Embretson		NE 1/4 of NE 1/4	30	134	31	40	568 630		568 630	210		189
"		NW 1/4 of NE 1/4				40	541 600		541 600	200		180
"		SW 1/4 of NE 1/4				40	541 600		541 600	200		180
"		SE 1/4 of NE 1/4				40	568 630		568 630	210		189
Joe Kraker		NE 1/4 of NW 1/4 Lot 1				40						
"		NW 1/4 of NW 1/4 " 2				40						
"		SW 1/4 of NW 1/4 " 7				40						
"		SE 1/4 of NW 1/4 " 8				40						
A. N. Herwood		Lots 3-6-11-14				160	1575 1280	722 810	2297 2490	830		746
J. E. Sampson		NE 1/4 of SW 1/4 Lot 9				40	541 600		541 600	200		180
Arthur J. Sampson		NW 1/4 of SW 1/4 " 10				40	571 635		571 635	211		190
J. E. Sampson		SW 1/4 of SW 1/4 " 15				40	474 525	270 303	744 828	276		248
"		SE 1/4 of SW 1/4 " 16				40	541 600	235 264	776 864	285		259
A. N. Herwood		Lots 45-12-13				148	8420 92282		2059 2283	761		686
Arthur J. Sampson		NE 1/4 of SE 1/4				40	379 420		379 420	140		126
J. E. Sampson		NW 1/4 of SE 1/4				40	677 700		677 700	200		226
"		SW 1/4 of SE 1/4				40	271 300		271 300	100		90
Arthur J. Sampson		SE 1/4 of SE 1/4				40	379 420		379 420	140		126
						948 814	13312	1808	15120	5040		4537
							12007	1611	13618			4539
							17007	1611				

56 Assessor's Return of Taxable Real Property in the Town of May, County of Cass, Minn., for the Year 1930.

Unplatted Real Estate—Assessed at 33 1-3 per cent of True and Full Value.

NAME OF OWNER	No. of School Dist.	DESCRIPTION	ASSESSOR'S VALUATIONS					EQUALIZED VALUATIONS				
			Sec. or Lot	Twp. or Block	Range	Number of Acres	True and Full Value of Land Exclusive of Structures and Improvements	STRUCTURES AND IMPROVEMENTS	Total True and Full Value of Land Including all Structures, Improvements and Machinery	Assessed Value of Land Including all Structures, Improvements and Machinery	Assessed Value as Equalized by Board of Review	Assessed Value as Equalized by the County Board
Jay Converse		NE 1/4 of NE 1/4	31	134	31	40	379 420		379 420	140		126
"		NW 1/4 of NE 1/4				40	311 345		311 345	115		104
"		SW 1/4 of NE 1/4				40	455 504		455 504	168		152
"		SE 1/4 of NE 1/4				40	406 450		406 450	150		135
Joe Francisco		Lots 3-4-5-6				155 16	2088 2315	185 208	2273 2523	841		758
Fred W. Hielt		NE 1/4 of NW 1/4 Lot 1				40	541 600		541 600	200		180
"		NW 1/4 of NW 1/4 " 2				40	541 600		541 600	200		180
"		SW 1/4 of NW 1/4 " 7				40	549 609		549 609	203		183
"		SE 1/4 of NW 1/4 " 8				40	460 510		460 510	170		153
Shoof Goggin Farmers State Bk. Gelman, Iowa		Lots 13-14				75 93	944 1047		944 1047	349		315
Fred Hielt		NE 1/4 of SW 1/4 Lot 9				40	541 600		541 600	200		180
"		NW 1/4 of SW 1/4 " 10				40	541 600		541 600	200		180
"		SW 1/4 of SW 1/4 " 15				40	541 600		541 600	200		180
"		SE 1/4 of SW 1/4 " 16				40	541 600		541 600	200		180
Apel Lamb, Jr		Lots 11 + 12				76 59	953 1056	441 495	1394 1551	517		465
Fred Hielt		NE 1/4 of SE 1/4				40	460 510		460 510	170		153
"		NW 1/4 of SE 1/4				40	541 600		541 600	200		180
"		SW 1/4 of SE 1/4				40	460 510		460 510	170		153
"		SE 1/4 of SE 1/4				40	541 600		541 600	200		180
						947 68	13076	703	13979	4593		4127
							11793	626	12419			4140
							11795	626				

Assessor's Return of Taxable Real Property in the Town of May, County of Cass, Minn., for the Year 1930.

Unplatted Real Estate—Assessed at 33 1-3 per cent of True and Full Value.

NAME OF OWNER	No. of School Dist.	DESCRIPTION	ASSESSOR'S VALUATIONS					EQUALIZED VALUATIONS				
			Sec. or Lot	Twp. or Block	Range	Number of Acres	True and Full Value of Land Exclusive of Structures and Improvements	STRUCTURES AND IMPROVEMENTS	Total True and Full Value of Land Including all Structures, Improvements and Machinery	Assessed Value of Land Including all Structures, Improvements and Machinery	Assessed Value as Equalized by Board of Review	Assessed Value as Equalized by the County Board
Arthur J Dahl		NE 1/4 of NE 1/4	32	134	31	40	663 735		663 735	245		221
"		NW 1/4 of NE 1/4				40	579 642		579 642	215		193
"		SW 1/4 of NE 1/4				40	273 303		273 303	101		91
"		SE 1/4 of NE 1/4				40	433 480 588 660		1021 1140	380		340
H. W. Converse		NE 1/4 of NW 1/4				40	433 480		433 480	160		144
"		NW 1/4 of NW 1/4				40	582 645		582 645	215		194
"		SW 1/4 of NW 1/4				40	644 714 655 735		1299 1449	485		433
"		SE 1/4 of NW 1/4				40	487 540		487 540	180		162
V. Lockwood		NE 1/4 of SW 1/4				40	717 795		717 795	265		239
"		NW 1/4 of SW 1/4				40	514 570		514 570	190		171
"		SW 1/4 of SW 1/4				40	465 516 722 810		1187 1326	442		396
"		SE 1/4 of SW 1/4				40	622 690		622 690	230		207
Frank H. Packer		NE 1/4 of SE 1/4				40	487 540		487 540	180		162
"		NW 1/4 of SE 1/4				40	649 720		649 720	240		216
"		SW 1/4 of SE 1/4				40	541 600		541 600	200		180
"		SE 1/4 of SE 1/4				40	649 720 623 699		1272 1419	473		424
						640	9690	2904	12594	4199		3773
							8738	2588	11326			3775
							8740	2587				

Assessor's Return of Taxable Real Property in the Town of May, County of Cass, Minn., for the Year 1930.

Unplatted Real Estate—Assessed at 33 1-3 per cent of True and Full Value.

Table with columns: NAME OF OWNER, No. of School or Dist., DESCRIPTION, ASSESSOR'S VALUATIONS (True and Full Value, Structures and Improvements, Total True and Full Value), EQUALIZED VALUATIONS (Assessed Value as Equalized by Board of Review, Assessed Value as Equalized by County Board, Assessed Value as Equalized by Minnesota Tax Commission).

Mike Naerack, P. F. Caspers, Otto Klingbeil, Geo J. Moon, L. D. Tutts, Geo Littrel, L. D. Tutts, P. F. Caspers, John M. Schmit

Assessor's Return of Taxable Real Property in the Town of May, County of Cass, Minn., for the Year 1930.

Unplatted Real Estate—Assessed at 33 1-3 per cent of True and Full Value.

Table with columns: NAME OF OWNER, No. of School or Dist., DESCRIPTION, ASSESSOR'S VALUATIONS (True and Full Value, Structures and Improvements, Total True and Full Value), EQUALIZED VALUATIONS (Assessed Value as Equalized by Board of Review, Assessed Value as Equalized by County Board, Assessed Value as Equalized by Minnesota Tax Commission).

P. M. Olson, Dower Lbr Co, Mary Lamm, P. M. Olson, Dower Lbr Co, Mary Lamm, Clifford J Corner, E. M. Barnett, Mary Lamm, Allen Mishatt, Henry Hanebuth, Julia & Alex Robertson, Allen Mishatt, Henry Hanebuth