

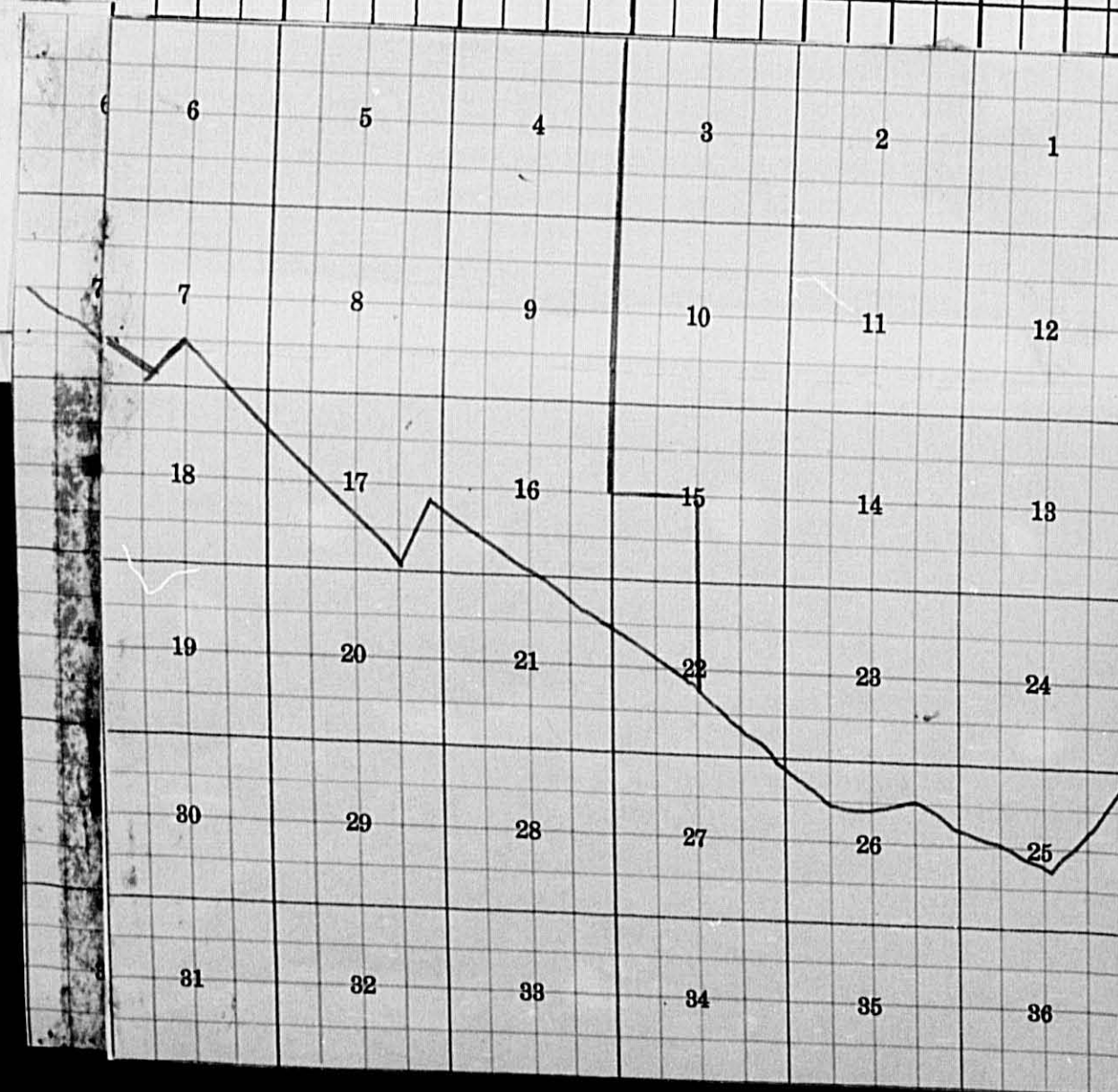
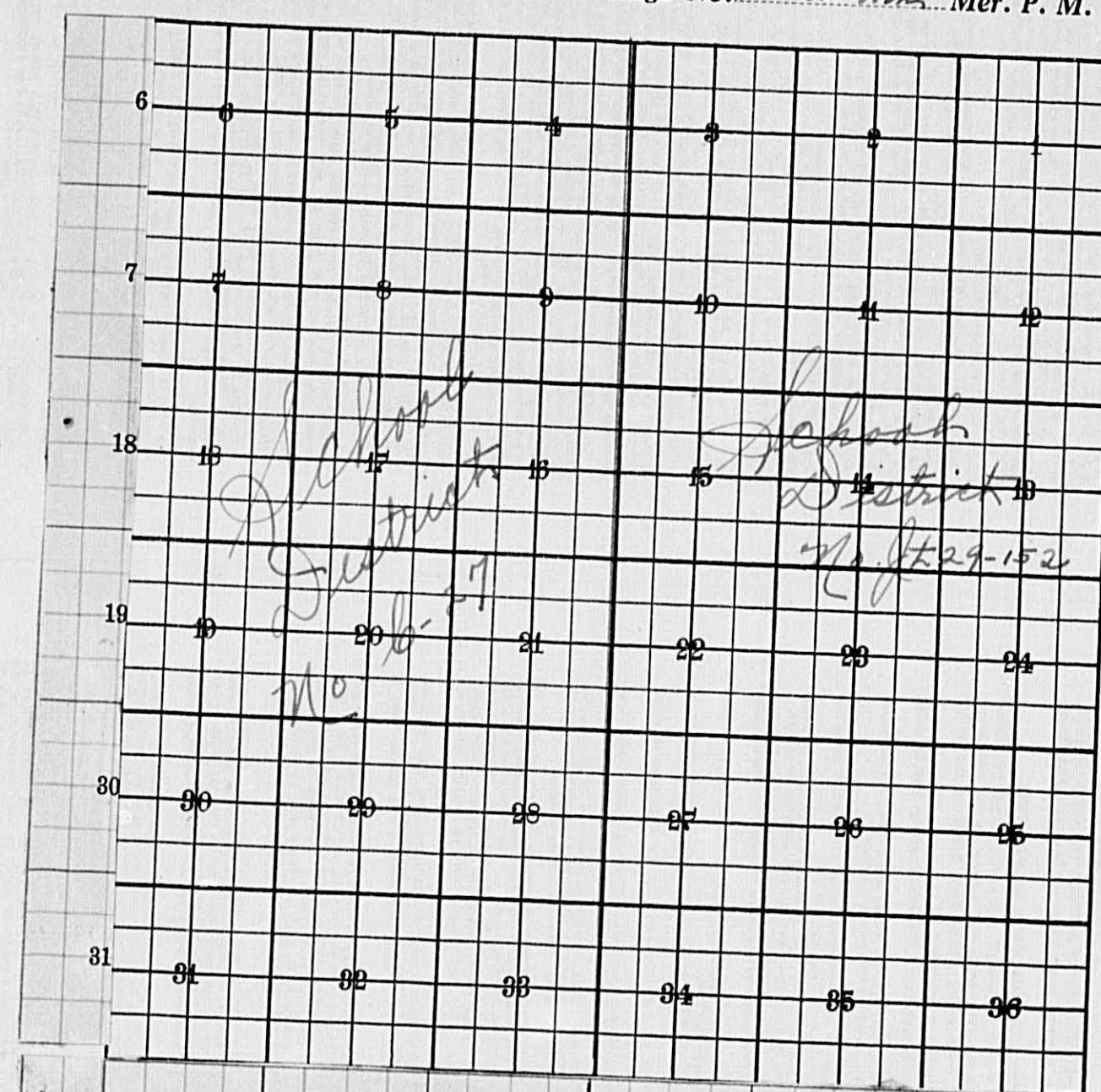
Assessment & Tax List - 1935

May

SECTION	PAGE
1	1
2	2
3	3
4	4
5	5
6	6
7	7
8	8
9	9
10	10
11	11
12	12
13	13
14	14
15	15
16	16
17	17
18	18
19	19
20	20
21	21
22	22
23	23
24	24
25	25
26	26
27	27
28	28
29	29
30	30
31	31
32	32
33	33
34	34
35	35
36	36
37	37
38	38
39	39
40	40
41	41
42	42
43	43
44	44
45	45
46	46
47	47
48	48
49	49
50	50
51	51
52	52
53	53
54	54
55	55
56	56
57	57
58	58
59	59
60	60
61	61
62	62
63	63
64	64
65	65
66	66
67	67
68	68
69	69
70	70
71	71
72	72
73	73
74	74
75	75
76	76
77	77
78	78
79	79
80	80
81	81
82	82
83	83
84	84
85	85
86	86
87	87
88	88
89	89
90	90
91	91
92	92
93	93
94	94
95	95
96	96
97	97
98	98
99	99
100	100

Sec. 1.....	
" 2.....	
" 3.....	
" 4.....	
" 5.....	
" 6.....	
" 7.....	
" 8.....	
" 9.....	
" 10.....	
" 11.....	
" 12.....	
" 13.....	
" 14.....	
" 15.....	
" 16.....	
" 17.....	
" 18.....	
" 19.....	
" 20.....	
" 21.....	
" 22.....	
" 23.....	
" 24.....	
" 25.....	
" 26.....	
" 27.....	
" 28.....	
" 29.....	
" 30.....	
" 31.....	
" 32.....	
" 33.....	
" 34.....	
" 35.....	
" 36.....	

Part of 133
Township No. 134 Range No. 31 on both Mer. P. M.



C^{1/2} of 134.31 joined to 29.152 - 7/1/52

Sec. 1-2-3-10-11, $\pi \frac{1}{2}$ of 12
 $\pi \frac{1}{2}$ of 14
 $\pi \frac{1}{2}$ of 15 } 133-31

All Sch. Dist #1 joined #29-152
7-1-52

Returns Showing Grain Received in or Handled by Elevators, Warehouses and Mills in the _____ of _____ in the
 County of _____ for the Year Ending May 1, 1955.

[illegible]

Note ★ Assessors will not fill these Column

Rea Estate

134-31

[illegible]

<i>Original Levy</i>	-	-	-	-	-	\$	<u>24,961.⁵⁶</u>	
<i>Additions</i>	-	-	-	-	-	\$	<u>24,⁰⁰</u>	<u>\$ 34,885.⁵⁶</u>
<i>Abatements</i>	-	-	-	-	-		<u>\$ 27,⁹⁸</u>	<u>\$ 24,767.⁵⁸</u>
COLLECTIONS								
<i>March Settlement</i>	-	-	-	-	-	\$	<u>4876.¹²</u>	
<i>June Settlement</i>	-	-	-	-	-	\$	<u>9658.²⁵</u>	
<i>November Settlement</i>	-	-	-	-	-	\$	<u>6109.⁰⁹</u>	
<i>January Settlement</i>	-	-	-	-	-	\$	<u>140.¹⁶</u>	<u>\$ 20783.¹⁶</u>
								<u>\$ 3983.⁹⁶</u>
<i>Over Collected</i>	-	-	-	-	-	\$	
<i>Under Collected</i>	-	-	-	-	-	\$	
<i>Delinquent</i>	-	-	-	-	-	\$	<u>3983.⁹⁶</u>	<u>\$ 3983.⁹⁶</u>
<i>Total</i>	-	-	-	-	-	\$	<u>24767.⁵⁸</u>	

—	Sec. or Lot	Town or Block	Range	Number of Acres of Land	
				Acres	100

No. 2. rate:
133-31: 8 1/2 Sec. 12
8 1/2 Sec. 13
8 1/2 Sec. 14
8 1/2 Sec. 15
7 5/4 Sec. 22
Sec. 23-24-25
8 5/4 Sec. 26.

TABULAR SCHEDULE OF VALUATIONS,
LEVIED IN THE Town OF May

VALUATION BY SCHOOL DISTRICTS					RATE OF STATE TAXES	RATE OF COUNTY TAXES										RATE OF TOWN TAXES										RATE OF									
School District No.	Agri-cultural Lands	Non-Agri-cultural Lands	Personal Property	Total Value of all Property except Money and Credits	Total Rate of State Tax	Rev.	R. & B.	Wel-fare	Bonds and Int.	Court House Bldg.	Total Rate of County Tax	Rev.	R. & B.	Drag Tax	State Loan	Em. Fire Rd.	Total Rate of Town Tax	Local	Spe-cial	State Loan	Defi-ciency	Tui-tion	Trans-portion	C.O. Bldg.	Old #1										
	Dollars	Dollars	Dollars	Dollars	Mills	Mills	Mills	Mills	Mills	Mills	Mills	Mills	Mills	Mills	Mills	Mills	Mills	Mills	1 Mill	Mills	Mills	Mills	Mills	Mills	Mills	Mills									
1. C 27	41,510		15,192	56,702	H. 3.98	28.01	14.01	49.83	9.97	2.00	103.82	5.	15.	1.		1.	5.	27.	1.	25.															
2. 29-152	32,540		14,822	47,362														1.	1.	25.															
	7350		22 58	7350														2.	1.	25.															
				111,472	N.H. 5.17																														
					9.15																														
Assessed Value	Rural	All Other	Personal Property	Total																															
Homestead	46,643			46,643																															
Non-Homestead	34,757		30,072	64,829																															
Total	81,400		30,072	111,472																															

RATES AND TAXES
COUNTY OF CASS, STATE OF MINNESOTA

SCHOOL TAXES			TAXES LEVIED														
			LOCAL 1 MILL AND SPECIAL SCHOOL TAXES BY DISTRICTS										ALL OTHER TAXES				
Mills	Total Rate of Sch'l Tax	Total Rate of all Taxes	Local 1 Mill	Special	State Loan	Ref.	Transp.	C.O.	Bld.	Old	Total School Taxes	FUNDS	Rate	Amounts			
93.44	228.24		56.70	141.75		1083.01	61.24	343.61	2336.12		5298.23	State - Non-Homestead,		335.18			
78.38	213.18		473.6	1184.05		2165.39	51.15	264.28			3712.23	State - Homestead,		443.66			
103.38	238.18		06	290		265	06	32			599	County Revenue,		3122.33			
79.38	214.18		735	183.75		336.04	79.4	41.01		735	583.44	County Road and Bridge,		1561.72			
104.38	239.18											County Welfare,		5554.72			
												Bonds and Interest		1111.38			
												Court House Bldg.		222.94			
			111.47	2788.25		3587.09	120.39	649.22	2336.12	735	9599.89			11,573.09			
												Town Revenue,		557.36			
												Town Road and Bridge,		1672.08			
												Town Drag,		111.47			
												Town State Loan,					
												Fire		141.47			
												Em. Road.		557.36			
														3009.74			
												School Local 1 Mill,		111.47			
												School Special,		2788.25			
												School State Loan,					
												Deficiency		3587.09			
												Tuition					
												Transportation		120.39			
												C.O.		649.22			
												Bld. C-27		2336.12			
												Old #1 Debt		735			
														9599.89			
														24961.56			

Total Taxes Real Estate 18,165.14
Pers. Prop. 6796.42
Total 24,961.56

Total Number of Acres 34,553.35
State of Minnesota, ss. L. C. Peterson
COUNTY OF CASS Auditor of said County and State aforesaid, do hereby certify that the foregoing is a true and correct Schedule, showing the valuation of all the taxable property, in the Town of May, in said County, the several rates of Taxation and Totals of the several Tax Funds levied thereon for the year A. D. 1915.
Witness my hand and official seal, this day of January A. D. 1915.
By L. C. Peterson County Auditor.
By Ellen Billen Deputy.

SEAL

or Ceased to be Homesteads

HOMESTEADS			
Sec. or Lot	Town or Block	Range	Number of Acres of Land
			Acres 100ths

COLLECTIONS OF TAXES OF 1956.....6

Lawrence

.....OF

May

..., CASS COUNTY, MINNESOTA

FUNDS		MARCH SETTLEMENT 19.56	JUNE SETTLEMENT 19.56	NOV. SETTLEMENT 19.56	Amount Collected from Nov. 19.56 to First Monday in Jan. 19.57	REDUCTIONS	Total Reductions and Collected	BALANCE UNCOLLECTED	ADDITIONS	Total Uncollected to First Monday January, 19.57
State—Homestead,	10420	8974	6862	41						
State—Homestead,	8642	17242	10854	242						
County Revenue,	60817	121345	76394	1703						
County Road and Bridge,	30418	60684	38208	852						
County Welfare,	108193	215874	135998	3038						
County Board and Interest,	21647	43172	27190	606						
County House	4342	1664	5454	123						
Town Revenue,	10856	21661	13636	304						
Town Road and Bridge,	32569	64983	40908	912						
Town Drag,	2171	4332	2727	61						
Town State Loan,	2171	4332	2727	61						
Free Cem. Road	10856	21661	13636	304						
School Local 1 Mill,	2171	4332	2727	62						
School Special,	54283	108308	68325	1756						
School State Loan,										
Deficiency	73959	140012	85072	1413						
Tuition										
Transportation	2345	4678	2945	65						
C. O.	12572	25220	15932	367						
B. & J.	39173	89854	61315	2114						
Bed.		467								
21 Shift.			98							
	487612	965825	610909	14016						

[illegible]

Assessment Roll and Tax List of Real Property in the Town of May
*Indicate Type of Property: R-Residential, C-Commercial, I-Industrial, U-Utility, F-Farm

IN WHOSE NAME ASSESSED	TO WHOM TRANSFERRED	DESCRIPTION OF PROPERTY					No. School District	Indicate Homestead Yes or No	Indicate Agricultural Yes or No	Indicate Type of Property	TRUE AND FULL VALUATIONS				ASSESSED VALUATIONS								FINAL EQUALIZED VALUE	
		SUBDIVISION	Sec. or Lot	Town or Block	Rng	Number of Acres of Land					LAND Exclusive of Structures and Improvements	BUILDINGS and Other Structures	MACHINERY Permanently Attached to Real Estate	TOTAL True and Full Value	RURAL		ALL OTHER		MACHINERY Permanently Attached to Real Estate	TOTAL ASSESSED VALUE	Total Assessed Value as Equalized by the Board of Review			
															Acres	100ths	Homestead Up to \$4,000 20%	Over \$4,000 and Non-Homestead 33 1/3%				Homestead Up to \$4,000 25%		Over \$4,000 and Non-Homestead 40%
George H. & Ruth C. Hip	1	NE 1/4 of NE 1/4	1	133	31	40	Yes	Yes																
Enoch & Etta Mushatt	State of Minnesota	NW 1/4 of NE 1/4				40	"	"																
"	"	SW 1/4 of NE 1/4				40	"	"																
Enoch & Etta Mushatt	4	SE 1/4 of NE 1/4				40	"	"																
	5																							
Paul O., Theodore H., & Walter Berglund	6	NE 1/4 of NW 1/4				40	"	"																
Effie Tolles & Alice Isaacson	7	NW 1/4 of NW 1/4				40	Yes	"																
State of Minnesota	8	SW 1/4 of NW 1/4																						
Enoch & Etta Mushatt	State of Minnesota	SE 1/4 of NW 1/4				40	No	"																
	10																							
State of Minnesota	"	NE 1/4 of SW 1/4				40	"	"																
State of Minnesota	12	NW 1/4 of SW 1/4																						
Rudolph & Edna Topp	13	SW 1/4 of SW 1/4				40	Yes	"																
Wills T. & Flossie Mann	14	SE 1/4 of SW 1/4				40	No	"																
	15																							
Enoch & Etta Mushatt	State of Minnesota	NE 1/4 of SE 1/4				40	"	"																
State of Minnesota	17	NW 1/4 of SE 1/4																						
Lottie & Mary Richmond	18	SW 1/4 of SE 1/4				40	Yes	"																
"	19	SE 1/4 of SE 1/4				40	"	"																
	20																							
						520																		

Cass County, Minnesota, for Taxes for the Year 1955.

SOLD FOR TAXES	VALUATIONS BY SCHOOL DISTRICTS AS EQUALIZED BY DEPARTMENT OF TAXATION						Tax including State HomesteadMills	State Tax on Non-HomesteadMills	SPECIAL TAXES \$ cts.	TOTAL TAXES \$ cts.	PAID	WHEN PAID Month Day Year	Number of Receipt	March Settlement 1956 \$ cts.	June Settlement 1956 \$ cts.	Penalty \$ cts.	November Settlement 1956 \$ cts.	Penalty \$ cts.	Collections to First Monday in January 1957 \$ cts.	Penalty \$ cts.	Delinquent on First Monday in January 1957 \$ cts.	Total Delinquent Tax and Penalty \$ cts.
	District No. 152	District No.	District No.	District No.	District No.	District No.																
	Rate.....	Rate.....	Rate.....	Rate.....	Rate.....	Rate.....																
MillsMillsMillsMillsMillsMills																
	Dollars	Dollars	Dollars	Dollars	Dollars	Dollars	\$ cts.	\$ cts.	\$ cts.	\$ cts.				\$ cts.	\$ cts.	\$ cts.	\$ cts.	\$ cts.	\$ cts.	\$ cts.	\$ cts.	\$ cts.
1	24 40						852			852	1	PAID IN FULL FEB 14 1956	2140	852								
2	88						1876	46		1922	2	Forfeited	10-1-56									
3	88						1876	46		1922	3	Forfeited	10-1-56									
4	88						1876	46		1922	4									1922		
5											5											
6	99						2110	52		2162	6									2162	2378	
7	24 40						852			852	7	PAID IN FULL MAY 31 1956	7193	852								
8											8											
9	122						2600	64		2664	9	Forfeited	10-1-56									
10											10											
11											11											
12											12											
13	24 53						1130			1130	13									1130		
14	70						1492	36		1528	14									1528	1681	
15											15											
16											16											
17											17											
18	24 53						1130			1130	18									1130	1243	
19	24 42						896			896	19									896		
20	228 555 783						16690	290		16980	20			852	852					8768		

Assessment Roll and Tax List of Real Property in the

Town

of May

*Indicate Type of Property: R-Residential, C-Commercial, I-Industrial, U-Utility, F-Farm

Form 5CD (55) WILSON-BAYNE COMPANY, MINNEAPOLIS

IN WHOSE NAME ASSESSED	TO WHOM TRANSFERRED	DESCRIPTION OF PROPERTY					No. School District	Indicate Homestead Yes or No	Indicate Agricultural Yes or No	Indicate Type of Property	TRUE AND FULL VALUATIONS				ASSESSED VALUATIONS							FINAL EQUALIZED VALUE Dollars		
		SUBDIVISION	Sec. or Lot	Town or Block	Rng	Number of Acres of Land					LAND Exclusive of Structures and Improvements	BUILDINGS and Other Structures	MACHINERY Permanently Attached to Real Estate	TOTAL True and Full Value	RURAL		ALL OTHER		MACHINERY Permanently Attached to Real Estate 33 1/3%	TOTAL ASSESSED VALUE	Total Assessed Value as Equalized by the Board of Review			
															Acres	100ths	Homestead Up to \$1,000 20%	Over \$4,000 and Non-Homestead 33 1/3%					Homestead Up to \$1,000 25%	Over \$4,000 and Non-Homestead 40%
Dollars	Dollars	Dollars	Dollars	Dollars	Dollars	Dollars	Dollars	Dollars	Dollars	Dollars	Dollars													
Samuel Hix		1				NE 1/4 of NE 1/4	2	133	31	38	14	45												
"		2				NW 1/4 of NE 1/4				37	85													
"		3				SW 1/4 of NE 1/4				40														
"		4				SE 1/4 of NE 1/4				40														
		5																						
A. J. Riter		6				NE 1/4 of NW 1/4				37	51													
Carl W. & Hazel S. Fox		7				NW 1/4 of NW 1/4				37	17													
"		8				SW 1/4 of NW 1/4				40														
Jesse C. & Rose C. Babb		9				SE 1/4 of NW 1/4				40														
		10																						
"		11				NE 1/4 of SW 1/4				40														
"		12				NW 1/4 of SW 1/4				40														
Annie Ketherbee		13				SW 1/4 of SW 1/4				40														
Jesse C. & Rose C. Babb		14				SE 1/4 of SW 1/4				40														
		15																						
Effie Tolles & Alice Isaacson		16				NE 1/4 of SE 1/4				40														
"		17				NW 1/4 of SE 1/4				40														
"		18				SW 1/4 of SE 1/4				40														
"		19				SE 1/4 of SE 1/4				40														
		20																						
							630		72															

630 72

150 added assessment 1935 Town Board

24221

Cass County, Minnesota, for Taxes for the Year 1955.

SOLD FOR TAXES	VALUATIONS BY SCHOOL DISTRICTS AS EQUALIZED BY DEPARTMENT OF TAXATION						Tax Including State HomesteadMills	State Tax on Non- HomesteadMills	SPECIAL TAXES \$ cts.	TOTAL TAXES \$ cts.	PAID	WHEN PAID Month Day Year	Number of Receipt	March Settlement 1956 \$ cts.	June Settlement 1956 \$ cts.	Penalty \$ cts.	November Settlement 1956 \$ cts.	Penalty \$ cts.	Collections to First Monday in January 1957 \$ cts.	Penalty \$ cts.	Delinquent on First Monday in January 1957 \$ cts.	Total Delinquent Tax and Penalty \$ cts.	REMARKS
	District No. 150	District No.	District No.	District No.	District No.	District No.																	
	RateMills	RateMills	RateMills	RateMills	RateMills	RateMills																	
	Dollars	Dollars	Dollars	Dollars	Dollars	Dollars																	
1	H 51						10 88			10 88	1	2nd Half Paid 1st Half Paid 2nd Half Paid	OCT 1 1956 MAY 1 1956 OCT 1 1956										
2	H 73						15 56			15 56	2	1st Half Paid 2nd Half Paid	MAY 1 1956 OCT 1 1956	60 32	37 52		37 52						
3	H 155						33 04			33 04	3	1st Half Paid 2nd Half Paid	MAY 1 1956 OCT 1 1956	40 84									
4	H 73						15 56			15 56	4	1st Half Paid 2nd Half Paid	OCT 1 1956 MAY 1 1956										
5											5												
6	H 61						13 00			13 00	6	PAID IN FULL 2nd Half Paid	MAY 31 1956 OCT 1 1956	71 94		13 00							
7	H 44						9 38			9 38	7	1st Half Paid 2nd Half Paid	MAY 31 1956 OCT 1 1956	71 92		14 28		14 28					
8	H 90						19 18			19 18	8	1st Half Paid 2nd Half Paid	MAY 31 1956 OCT 2 2 1956	156 86									
9	H 53						11 30			11 30	9	1st Half Paid 2nd Half Paid	MAY 31 1956 OCT 2 2 1956	147 93		5 65		5 65					
10											10												
11	H 83						17 70			17 70	11	2nd Half Paid 1st Half Paid	OCT 2 2 1956 MAY 31 1956	71 88		8 85		8 85					
12	H 61						13 00			13 00	12	2nd Half Paid 1st Half Paid	OCT 2 2 1956 MAY 31 1956	147 93		6 50		6 50					
13	SOLD FOR TAXES H 91						19 40			19 40	13	PAID IN FULL 2nd Half Paid	MAY 31 1956 OCT 2 2 1956	8 87		19 40							
14	H 221						47 12			47 12	14	2nd Half Paid 1st Half Paid	OCT 2 2 1956 MAY 31 1956	147 93		23 56		23 56					
15											15												
16	H 25						15 98			15 98	16	PAID IN FULL	MAY 31 1956										
17	H 24						51 2			51 2	17	PAID IN FULL	MAY 31 1956	71 93		55 22							
18	H 98						20 90			20 90	18	PAID IN FULL	MAY 31 1956										
19	H 62						13 22			13 22	19	PAID IN FULL	MAY 31 1956										
20											20												
	21 1315						28034			28034					183 98		96 36						

21 1315

28034

28034

183 98

96 34

*Indicate Type of Property: R-Residential, C-Commercial, I-Industrial, U-Utility, F-Farm

Form SCD (55) WILLES-DAVIS COMPANY, MINNEAPOLIS

[illegible]

Cass County, Minnesota, for Taxes for the Year 1955.

	SOLD FOR TAXES	VALUATIONS BY SCHOOL DISTRICTS AS EQUALIZED BY DEPARTMENT OF TAXATION						Tax including State HomesteadMills	State Tax on Non- HomesteadMills	SPECIAL TAXES	TOTAL TAXES	PAID	WHEN PAID	Number of Receipt	March Settlement 1956	June Settlement 1956	Penalty	November Settlement 1956	Penalty	Collections to First Monday in January 1957	Penalty	Delinquent on First Monday in January 1957	Total Delinquent Tax and Penalty	REMARKS
		District No..... Rate.....Mills	District No..... Rate.....Mills	District No..... Rate.....Mills	District No..... Rate.....Mills	District No..... Rate.....Mills	District No..... Rate.....Mills																	
		Dollars	Dollars	Dollars	Dollars	Dollars	Dollars																	
							\$ cts.	\$ cts.	\$ cts.	\$ cts.		Month Day Year	\$ cts.	\$ cts.	\$ cts.	\$ cts.	\$ cts.	\$ cts.	\$ cts.	\$ cts.	\$ cts.	\$ cts.		
1	N 68						1450				1450	1st Half Paid OCT 31 1956	15686		725	v	725							
2	2nd Half Paid MAY 31 1956	72					1534	38			1572	2									1572			
3	44						938	22			960	3 PAID IN FULL APR 28 1956	5905		960	v								
4	H 75						1598				1598	4 2nd Half Paid OCT 31 1956	15686		799	v	799							
5												1st Half Paid MAY 31 1956	7192											
6	H 26						554				554	6									554x 609			
7	H 77						1642				1642	7									1642x 1806			
8	H 79						1684				1684	8									1684x 1852			
9	50						1066	26			1092	9 PAID IN FULL APR 28 1956	5905		1092	v								
10												10												
11	H 53						1130				1130	11 2nd Half Paid OCT 31 1956	15686		565	v	565							
12	90						1918	46			1964	12 PAID IN FULL APR 28 1956	5905		1964	v								
13	74						1578	38			1616	13 PAID IN FULL APR 28 1956	5905		1616	v								
14	H 53						1130				1130	14 2nd Half Paid OCT 31 1956	15686		565	v	565							
15												1st Half Paid MAY 31 1956	7192											
16	H 96						2046				2046	16 2nd Half Paid OCT 31 1956	15686											
17	H 53						1130				1130	17 1st Half Paid MAY 31 1956	7192		3944	v	3944							
18	H 159						3390				3390	18 2nd Half Paid OCT 31 1956	15686											
19	H 62						1322				1322	19 1st Half Paid MAY 31 1956	7192											
20												20												
	H 801 330 1131						24110	170			24280				12230		6598				5452			

e Down of May

Cass County, Minnesota, for Taxes for the Year 1955.

SOLD FOR TAXES	VALUATIONS BY SCHOOL DISTRICTS AS EQUALIZED BY DEPARTMENT OF TAXATION						Tax including State HomesteadMills	State Tax on Non-HomesteadMills	SPECIAL TAXES	TOTAL TAXES	PAID	WHEN PAID	Number of Receipt	March Settlement 1956	June Settlement 1956	Penalty	November Settlement 1956	Penalty	Collections to First Monday in January 1957	Penalty	Delinquent on First Monday in January 1957	Total Delinquent Tax and Penalty	REMARKS
	District No.	District No.	District No.	District No.	District No.	District No.																	
	Rate.	Rate.	Rate.	Rate.	Rate.	Rate.																	
MillsMillsMillsMillsMillsMills																	
	Dollars	Dollars	Dollars	Dollars	Dollars	Dollars	\$ cts.	\$ cts.	\$ cts.	\$ cts.	Month Day Year		\$ cts.	\$ cts.	\$ cts.	\$ cts.	\$ cts.	\$ cts.	\$ cts.	\$ cts.	\$ cts.	\$ cts.	
1				H	142		3242		3242		1										3242	3566	
2				H	46		1050		1050		2										1050	1156	
3				H	84		1918		1918		3										1918	2110	
4				H	23		524		524		4										524	576	
5											5												
6	WOLD FOR TAXES				81		1848	42	1890		6										1890		
7	WOLD FOR TAXES				105		2396	54	2450		7										2450		
8	WOLD FOR TAXES				321		7326	166	7492		8										7492		
9	WOLD FOR TAXES				80		1826	42	1868		9										1868		
10											10												
11				H	26		594		594		11	PAID IN FULL	APR 11 1956										
12				H	95		2168		2168		12	PAID IN FULL	APR 11 1956	5359		10478							
13				H	283		6460		6460		13	PAID IN FULL	APR 11 1956										
14				H	55		1256		1256		14	PAID IN FULL	APR 11 1956										
15											15												
16					170		3880	88	3968		16	PAID IN FULL	APR 28 1956										
17					102		2328	52	2380		17	PAID IN FULL	APR 28 1956	5905		16034							
18					55		1256	28	1284		18	PAID IN FULL	APR 28 1956										
19					360		8216	186	8402		19	PAID IN FULL	APR 28 1956										
20											20												
				H	754		46288	658	46946												20434		

Assessment Roll and Tax List of Real Property in the Down of May,
 *Indicate Type of Property: R-Residential, C-Commercial, I-Industrial, U-Utility, F-Farm

Form 500 (55) - MILLER-BAYNE & COMPANY, MINNEAPOLIS

IN WHOSE NAME ASSESSED	TO WHOM TRANSFERRED	DESCRIPTION OF PROPERTY					No. School District	Indicate Home- stead Yes or No	Indicate Agri- cul- tural Yes or No	Indicate Type of Prop- erty	TRUE AND FULL VALUATIONS				ASSESSED VALUATIONS							FINAL EQUALIZED VALUE
		SUBDIVISION	Sec. or Lot	Town or Block	Rng	Number of Acres of Land					LAND Exclusive of Structures and Improvements	BUILDINGS and Other Structures	MACHINERY Permanently Attached to Real Estate	TOTAL True and Full Value	RURAL		ALL OTHER		MACHINERY Permanently Attached to Real Estate 33 1/3 %	TOTAL ASSESSED VALUE	Total Assessed Value as Equalized by the Board of Review	
															Homestead Up to \$4,000 20%	Over \$4,000 and Non- Homestead 33 1/3 %	Homestead Up to \$4,000 25%	Over \$4,000 and Non- Homestead 40%				
Dollars	Dollars	Dollars	Dollars	Dollars	Dollars	Dollars	Dollars	Dollars	Dollars	Dollars	Dollars	Dollars	Dollars	Dollars	Dollars							

Herman & Leona Hagen	1	NE 1/4 of NE 1/4		5 133 31	35.74	27 2/3	Yes														
" " "	2	NW 1/4 of NE 1/4			35.95	"	"														
James H. & Hazel M. Converse	3	SW 1/4 of NE 1/4			40	"	"														
" " "	4	SE 1/4 of NE 1/4			40	"	"														
	5																				
Herman & Leona Hagen	6	NE 1/4 of NW 1/4			36.16	"	"														
George & Bettie Bernth	7	NW 1/4 of NW 1/4			36.36	"	"														
" " "	8	SW 1/4 of NW 1/4			40	"	"													138	
James H. & Hazel M. Converse	9	SE 1/4 of NW 1/4			40	"	"													90	
	10																				
W.R. Jones Ray & Jones	11	NE 1/4 of SW 1/4			40	"	"														
George & Bettie Bernth	12	NW 1/4 of SW 1/4			40	"	"														
Ray & Jones	13	SW 1/4 of SW 1/4			40	"	"														
De Witt & Ada Roberts	14	SE 1/4 of SW 1/4			40	"	"														
	15																				
Clifford J. & Alice L. Corner	16	NE 1/4 of SE 1/4			40	"	"														
Ray & Jones	17	NW 1/4 of SE 1/4			40	"	"														
De Witt & Ada Roberts	18	SW 1/4 of SE 1/4			40	"	"														
Clifford J. & Alice L. Corner	19	SE 1/4 of SE 1/4			40	"	"														
	20																				

624.21

Cass County, Minnesota, for Taxes for the Year 1955.

SOLD FOR TAXES	VALUATIONS BY SCHOOL DISTRICTS AS EQUALIZED BY DEPARTMENT OF TAXATION						Tax including State Homestead	State Tax on Non- Homestead	SPECIAL TAXES	TOTAL TAXES	PAID	WHEN PAID	Number of Receipt	March Settlement 1956	June Settlement 1956	Penalty	November Settlement 1956	Penalty	Collections to First Monday in January 1957	Penalty	Delinquent on First Monday in January 1957	Total Delinquent Tax and Penalty	REMARKS
	District	District	District	District	District	District																	
	No.	No.	No.	No.	No.	No.																	
	Rate.....	Rate.....	Rate.....	Rate.....	Rate.....	Rate.....																	
.....MillsMillsMillsMillsMillsMills																		
Dollars	Dollars	Dollars	Dollars	Dollars	Dollars	\$ cts.	\$ cts.	\$ cts.	\$ cts.	Month	Day	Year	\$ cts.	\$ cts.	\$ cts.	\$ cts.	\$ cts.	\$ cts.	\$ cts.	\$ cts.	\$ cts.	\$ cts.	
1					H 163	3720			3720	1	Balance Paid	OCT 31 1956	15691										
2	SOLD FOR TAXES				H 85	1940			1940	2	1st Half Paid	MAY 31 1956	8748		1860		1860						
3					H 102	2328			2328	3	2nd Half Paid	OCT 31 1956			3344		3344				1940		
4					H 191	4360			4360	4	1st Half Paid	MAY 31 1956	8727										
5										5	2nd Half Paid	OCT 31 1956	15682										
6					H 41	936			936	6	Balance Paid	OCT 31 1956	15691										
7		Abate #6786			H 83	1894			1894	7	1st Half Paid	MAY 31 1956	8748		478		458						
8		" #6786			H 90	2054	46		2054	8	Balance Paid	OCT 31 1956	15629		1611		183				13.28 Abated		
9					H 69	1574			1574	9	1st Half Paid	MAY 31 1956	8340				182				8.68		
10										10	2nd Half Paid	OCT 31 1956	15682										
11					H 53	1210			1210	11	1st Half Paid	MAY 31 1956	8727										
12		Abate #6786			H 161	3674	140		3674	12	Balance Paid	OCT 31 1956	15643		605		605				26.06 Abated		
13					H 72	1644			1644	13	1st Half Paid	MAY 31 1956	8735		3140		534						
14					H 67	1530			1530	14	2nd Half Paid	OCT 31 1956	15693		822		822						
15										15	1st Half Paid	MAY 31 1956	8735										
16					H 80	1826			1826	16	PAID IN FULL	APR 16 1956	5417		1530								
17					H 91	2076			2076	17	2nd Half Paid	OCT 31 1956	15693										
18					H 122	2784			2784	18	1st Half Paid	MAY 31 1956	8735		1038		1038						
19					H 42	958			958	19	PAID IN FULL	APR 16 1956	5417		2784								
20					H 1178	38230	254		38488	20	2nd Half Paid	OCT 31 1956	15693										
					H 497																		
					H 1645																		

the Down of Mass

of Mass

Form SCD (55) MILLER-DAVIS COMPANY, MINNEAPOLIS

762.03

6

134-31

Assessment Roll and Tax List of Real Property in the Town of May,
*Indicate Type of Property: R-Residential, C-Commercial, I-Industrial, U-Utility, F-Farm

Form SCD (55) JULY-1954 EDITION, MINNEAPOLIS

IN WHOSE NAME ASSESSED		TO WHOM TRANSFERRED		DESCRIPTION OF PROPERTY					No. School District	Indicate Homestead Yes or No	Indicate Agricultural Yes or No	Indicate Type of Property	TRUE AND FULL VALUATIONS				ASSESSED VALUATIONS							FINAL EQUALIZED VALUE																																																																																																																																																																																																																																																																																																																																																																																																																																																																																																																																																																																																																																																																																																																																																																																																																																																																																																																																																																																																																																																																																																																																																																																																																															
				SUBDIVISION	Sec. or Lot	Town or Block	Rng.	Number of Acres of Land					LAND Exclusive of Structures and Improvements	BUILDINGS and Other Structures	MACHINERY Permanently Attached to Real Estate	TOTAL True and Full Value	RURAL		ALL OTHER		MACHINERY Permanently Attached to Real Estate	TOTAL ASSESSED VALUE	Total Assessed Value as Equalized by the Board of Review																																																																																																																																																																																																																																																																																																																																																																																																																																																																																																																																																																																																																																																																																																																																																																																																																																																																																																																																																																																																																																																																																																																																																																																																																																
																	Acres	100ths	Homestead Up to \$4,000 20%	Over \$4,000 and Non-Homestead 33 1/3%					Homestead Up to \$1,000 25%	Over \$4,000 and Non-Homestead 40%																																																																																																																																																																																																																																																																																																																																																																																																																																																																																																																																																																																																																																																																																																																																																																																																																																																																																																																																																																																																																																																																																																																																																																																																																													
																											Dollars	Dollars	Dollars	Dollars	Dollars	Dollars	Dollars	Dollars																																																																																																																																																																																																																																																																																																																																																																																																																																																																																																																																																																																																																																																																																																																																																																																																																																																																																																																																																																																																																																																																																																																																																																																																																					
Lippert Ahrens Lordon Jewell S. Falconer		1				NE 1/4 of NE 1/4				6	133	31	6-27																																																																																																																																																																																																																																																																																																																																																																																																																																																																																																																																																																																																																																																																																																																																																																																																																																																																																																																																																																																																																																																																																																																																																																																																																																										

Lippert Ahrens
Lordon Jewell S. Fakoner

Hubert & Donna Alt

9598

Cass County, Minnesota, for Taxes for the Year 1955.

SOLD FOR TAXES	VALUATIONS BY SCHOOL DISTRICTS AS EQUALIZED BY DEPARTMENT OF TAXATION						Tax Including State Homestead	State Tax on Non-Homestead	SPECIAL TAXES	TOTAL TAXES	PAID	WHEN PAID	Number of Receipt	March Settlement 1956	June Settlement 1956	Penalty	November Settlement 1956	Penalty	Collections to First Monday in January 1957	Penalty	Delinquent on First Monday in January 1957	Total Delinquent Tax and Penalty	REMARKS
	District No.	District No.	District No.	District No.	District No.	District No.																	
	Rate	Rate	Rate	Rate	Rate	Rate																	
	Mills	Mills	Mills	Mills	Mills	Mills																	
1																							
2																							
3																							
4																							
5																							
6																							
7																							
8																							
9																							
10																							
11																							
12																							
13																							
14																							
15																							
16																							
17																							
18																							
19																							
20																							

H 2482
63/19 2
220

Assessment Roll and Tax List of Real Property in the Down of May

*Indicate Type of Property: R-Residential, C-Commercial, I-Industrial, U-Utility, F-Farm

Form SCD (55) MILLER-BAYNE COMPANY, MINNEAPOLIS

IN WHOSE NAME ASSESSED	TO WHOM TRANSFERRED	DESCRIPTION OF PROPERTY					No. School District	Indicate Homestead Yes or No	Indicate Agricultural Yes or No	Indicate Type of Property	TRUE AND FULL VALUATIONS				ASSESSED VALUATIONS						Total Assessed Value as Equalized by the Board of Review	FINAL EQUALIZED VALUE	
		SUBDIVISION	Sec. or Lot	Town or Block	Rng	Acres of Land					LAND Exclusive of Structures and Improvements	BUILDINGS and Other Structures	MACHINERY Permanently Attached to Real Estate	TOTAL True and Full Value	RURAL		ALL OTHER		MACHINERY Permanently Attached to Real Estate	TOTAL ASSESSED VALUE			
						Homestead Up to \$4,000 20%									Over \$4,000 and Non-Homestead 33 1/3%	Homestead Up to \$4,000 25%	Over \$4,000 and Non-Homestead 40%						
																		Dollars					Dollars
Peter S. & Christine Sampson		1	NE 1/4 of NE 1/4	7	133	31	40	27	Yes	Yes													
Frank C. & Alta L. Dietz		2	NW 1/4 of NE 1/4				40		"	"													
"	"	3	SW 1/4 of NE 1/4				40		"	"													
Peter S. & Christine Sampson		4	SE 1/4 of NE 1/4				40		"	"													
Jessie Reynolds & Alta M. Austin		5	Lot 11 less 1.08 acs. Hwy				46	23	No	"													
Roy H. Buckner		6	NE 1/4 of NW 1/4 Lot 1				40		Yes	"													
"	"	7	NW 1/4 of NW 1/4 Lot 2				40		"	"													
"	"	8	SW 1/4 of NW 1/4 Lot 7				40		"	"													
"	"	9	SE 1/4 of NW 1/4 Lot 8				40		"	"													
Verb & Violet White		10	Lot 44 330' x 1293.6' on E. side of Hwy				44	10	"	"													
J. Leroy & Jessiie S. Reynolds		11	NE 1/4 of SW 1/4 Lot 9				40		No	"													
J. Leroy & Jessiie S. Reynolds		12	NW 1/4 of SW 1/4 Lot 10				40		"	"													
Geo. St. Mosher		13	SW 1/4 of SW 1/4 Lot 12				22	63	"	"													
R. A. Monty		14	SE 1/4 of SW 1/4 Lot 13				33	22	Yes	"													
Gerald Thout		15	Lot 3				40		No	"			150	Homestead assessment 1923 by Town Board							410.0		
Peter S. & Christine Sampson		16	NE 1/4 of SE 1/4				40		Yes	"													
Frank C. & Alta L. Dietz		17	NW 1/4 of SE 1/4				40		"	"													
R. A. Monty		18	SW 1/4 of SE 1/4 less Hwy				38	67	"	"													
Peter S. & Christine Sampson		19	SE 1/4 of SE 1/4				39	65	"	"													
		20						748	50														

Cass County, Minnesota, for Taxes for the Year 1955.

SOLD FOR TAXES	VALUATIONS BY SCHOOL DISTRICTS AS EQUALIZED BY DEPARTMENT OF TAXATION						Tax Including State Homestead	State Tax on Non-Homestead	SPECIAL TAXES	TOTAL TAXES	PAID	WHEN PAID	Number of Receipt	March Settlement 1956	June Settlement 1956	Penalty	November Settlement 1956	Penalty	Collections to First Monday in January 1957	Penalty	Delinquent on First Monday in January 1957	Total Delinquent Tax and Penalty	REMARKS
	District No.	District No.	District No.	District No.	District No.	District No.																	
	Rate	Rate	Rate	Rate	Rate	Rate																	
	Mills	Mills	Mills	Mills	Mills	Mills																	
1					H	49	11.18			11.18	1 PAID IN FULL	MAY 31 1956	8747		11.18								
2					H	40	9.12			9.12	2 PAID IN FULL	MAY 31 1956	8737		9.12								
3					H	56	12.78			12.78	3 PAID IN FULL	MAY 31 1956	8737		12.78								
4					H	53	12.10			12.10	4 PAID IN FULL	MAY 31 1956	8747		12.10								
5						225	51.36	116		52.52	5 PAID IN FULL	AUG 20 1956	13607					52.52	131				
6	SOLD FOR TAXES				H	64	14.60			14.60	6 PAID IN FULL	AUG 24 1956											
7	SOLD FOR TAXES				H	251	57.28			57.28	7 PAID IN FULL	AUG 24 1956											
8	SOLD FOR TAXES				H	50	11.42			11.42	8 PAID IN FULL	AUG 24 1956											
9	SOLD FOR TAXES				H	53	12.10			12.10	9 PAID IN FULL	AUG 24 1956											
10					H	85	19.40			19.40	10 PAID IN FULL	OCT 1 1956	14081					19.40	67				
11						88	20.08	46		20.54	11 PAID IN FULL	AUG 20 1956	13607					20.54	52				
12	SOLD FOR TAXES					88	20.08	46		20.54	12												
13						48	10.96	24		11.20	13 PAID IN FULL	MAY 31 1956	8743		11.20								
14					H	160	36.52			36.52	14 2nd Half Paid	OCT 31 1956	15698		18.26			18.26					
15					H	100	22.82			22.82	15 PAID IN FULL	AUG 27 1956	13956					22.82	57				
16					H	180	41.08			41.08	16 PAID IN FULL	MAY 31 1956	8747		41.08								
17					H	138	31.50			31.50	17 PAID IN FULL	MAY 31 1956	8737		31.50								
18					H	99	22.60			22.60	18 2nd Half Paid	OCT 31 1956	16698		11.30			11.30					
19					H	94	21.46			21.46	19 PAID IN FULL	MAY 31 1956	8747		21.46								
20					H	1492	438.44	232		440.76					179.98			240.24			2054		

Form SCD (55) HILLIS-DAVIS COMPANY, MINNEAPOLIS

134-31

SOLD FOR TAXES	VALUATIONS BY SCHOOL DISTRICTS AS EQUALIZED BY DEPARTMENT OF TAXATION							Tax including State Homestead	State Tax on Non-Homestead	SPECIAL TAXES	TOTAL TAXES	PAID	WHEN PAID	Number of Receipt	March Settlement 1956	June Settlement 1956	Penalty	November Settlement 1956	Penalty	Collections to First Monday in January 1957	Penalty	Delinquent on First Monday in January 1957	Total Delinquent Tax and Penalty	REMARKS
	District No.	District No.	District No.	District No.	District No.	District No.	No.....	No.....																
	Rate.....	Rate.....	Rate.....	Rate.....	Rate.....	Rate.....	Rate.....	Rate.....																
	Mills	Mills	Mills	Mills	Mills	Mills	Mills	Mills																
	Dollars	Dollars	Dollars	Dollars	Dollars	Dollars	\$ cts.	\$ cts.	\$ cts.	\$ cts.		Month Day Year	\$ cts.	\$ cts.	\$ cts.	\$ cts.	\$ cts.	\$ cts.	\$ cts.	\$ cts.	\$ cts.	\$ cts.	\$ cts.	
1																								
2																								
3				H	111		25 ³⁴																	
4																								
5				H	100		22 ⁸²																	
6																								
7				H	28		6 ⁴⁰																	
8																								
9																								
10																								
11																								
12																								
13																								
14																								
15																								
16																								
17																								
18																								
19																								
20				H	239 136 <u>375</u>		85 ⁶⁰		70							61 ¹⁴		25 ¹⁶						

Assessment Roll and Tax List of Real Property in the Town of May,
*Indicate Type of Property: R-Residential, C-Commercial, I-Industrial, U-Utility, F-Farm

Form 5CD (55) - WILSON-DALY COMPANY, MINNEAPOLIS												* Indicate Type of Property: R - Residential, C - Commercial, I - Industrial, U - Utility, F - Farm												
IN WHOSE NAME ASSESSED	TO WHOM TRANSFERRED	DESCRIPTION OF PROPERTY					No. School District	Indicate Homestead Yes or No	Indicate Agricultural Yes or No	Indicate Type of Property	TRUE AND FULL VALUATIONS				ASSESSED VALUATIONS							FINAL EQUALIZED VALUE		
		SUBDIVISION	Sec. or Lot	Town or Block	Rng.	Number of Acres of Land					LAND Exclusive of Structures and Improvements	BUILDINGS and Other Structures	MACHINERY Permanently Attached to Real Estate	TOTAL True and Full Value	RURAL		ALL OTHER		MACHINERY Permanently Attached to Real Estate	TOTAL ASSESSED VALUE	Total Assessed Value as Equalized by the Board of Review			
															Acres	100ths	Homestead Up to \$4,000 20%	Over \$4,000 and Non-Homestead 33 1/3%					Homestead Up to \$4,000 25%	Over \$4,000 and Non-Homestead 40%
Harvey Paul & Shirley Marohn		1	6 1/4 of NE 1/4 of NE 1/4	813331	20	6.27	Yes	Yes																
Delbert & Lester Newkirk		2	NW 1/4 of NE 1/4		40		"	"																
"		3	SW 1/4 of NE 1/4		40		"	"																
Harvey Paul & Shirley Marohn		4	6 1/4 of SE 1/4 of NE 1/4		20		"	"																
Joseph E. & Bertha C. Haler		5	2 1/2 of NE 1/4 of NE 1/4		20		"	"																
Delbert & Lester Newkirk		6	NE 1/4 of NW 1/4		40		"	"																
Geo. Bernth		7	NW 1/4 of NW 1/4		40		"	"																
"		8	SW 1/4 of NW 1/4		40		"	"																
Delbert & Lester Newkirk		9	SE 1/4 of NW 1/4		40		"	"																
Joseph E. & Bertha C. Haler		10	2 1/2 of SE 1/4 of NE 1/4		20		"	"																
"		11	NE 1/4 of SW 1/4		40		"	"																
Geo. Bernth		12	NW 1/4 of SW 1/4		40		"	"																
Josephine & Geo. Sheffer		13	SW 1/4 of SW 1/4		40		"	"																
"		14	SE 1/4 of SW 1/4		40		"	"																
		15																						
Harvey Paul & Shirley Marohn		16	NE 1/4 of SE 1/4		40		"	"																
"		17	NW 1/4 of SE 1/4 less 1 ac.		39		"	"																
Josephine & Geo. Sheffer		18	SW 1/4 of SE 1/4		40		"	"																
Conrad B. Roswald & Grace L. Roswald		19	SE 1/4 of SE 1/4		40		"	"																
Joseph E. & Bertha C. Haler		20	1 ac. of NW 1/4 of SE 1/4		1		"	"																
					640																			

Cass County, Minnesota, for Taxes for the Year 1955.

SOLD FOR TAXES	VALUATIONS BY SCHOOL DISTRICTS AS EQUALIZED BY DEPARTMENT OF TAXATION						Tax including State Homestead	State Tax on Non-Homestead	SPECIAL TAXES	TOTAL TAXES	PAID	WHEN PAID	Number of Receipt	March Settlement 1955	June Settlement 1955	Penalty	November Settlement 1955	Penalty	Collections to First Monday in January 1957	Penalty	Delinquent on First Monday in January 1957	Total Delinquent Tax and Penalty	REMARKS
	District No.	District No.	District No.	District No.	District No.	District No.																	
	Rate	Rate	Rate	Rate	Rate	Rate																	
	Mills	Mills	Mills	Mills	Mills	Mills																	
1				H	26	27	594			594	1	PAID IN FULL MAY 31 1955	8738		594								
2				H	64	27	1460			1460	2										1460		
3				H	132	27	3012			3012	3										3012		
4				H	41	27	936			936	4	PAID IN FULL MAY 31 1955	8738		936								
5				H	36	27	822			822	5	2nd Half Paid OCT 31 1955	8738				411						
6				H	36	27	822			822	6	1st Half Paid MAY 31 1955	8738								822		
7				H	53	27	1210			1210	7	2nd Half Paid OCT 31 1955	8738		605		605						
8				H	63	27	1438			1438	8	1st Half Paid MAY 31 1955	8738		719		719						
9				H	56	27	1278			1278	9	2nd Half Paid OCT 31 1955	8738								1278		
10				H	43	27	982			982	10	1st Half Paid MAY 31 1955	8738		491		491						
11				H	172	27	3926			3926	11	2nd Half Paid OCT 31 1955	8738		1963		1963						
12				H	188	27	4290			4290	12	1st Half Paid MAY 31 1955	8738		2145		2145						
13				H	146	27	3332			3332	13	PAID IN FULL APR 18 1955	5746		4546								
14				H	53	27	1210			1210	14	PAID IN FULL APR 18 1955	5746										
15											15												
16				H	170	27	3880			3880	16	PAID IN FULL MAY 31 1955	8738		3880								
17				H	91	27	2076			2076	17	PAID IN FULL MAY 31 1955	8738		2076								
18				H	62	27	1416			1416	18	PAID IN FULL APR 18 1955	5746		1416								
19				H	185	27	4222			4222	19	PAID IN FULL MAY 31 1955	12251		4222								
20				H	1	27	22			22	20	2nd Half Paid OCT 31 1955	8738										
				H	1618	27	36928			36928					24011		6345				6572		

Assessment Roll and Tax List of Real Property in the Down of May,
*Indicate Type of Property: R-Residential, C-Commercial, I-Industrial, U-Utility, F-Farm

Form 502 (55) MILLER-BAYNE COMPANY, MINNEAPOLIS

IN WHOSE NAME ASSESSED	TO WHOM TRANSFERRED	DESCRIPTION OF PROPERTY					No. School District	Indicate Homestead Yes or No	Indicate Agricultural Yes or No	Indicate Type of Property	TRUE AND FULL VALUATIONS				ASSESSED VALUATIONS						Total Assessed Value as Equalized by the Board of Review	FINAL EQUALIZED VALUE	
		SUBDIVISION	Sec. or Lot	Town or Block	Rug	Number of Acres of Land					LAND Exclusive of Structures and Improvements	BUILDINGS and Other Structures	MACHINERY Permanently Attached to Real Estate	TOTAL True and Full Value	RURAL		ALL OTHER		MACHINERY Permanently Attached to Real Estate	TOTAL ASSESSED VALUE			
															Homestead Up to \$4,000 20%	Over \$4,000 and Non-Homestead 33 1/3%	Homestead Up to \$4,000 25%	Over \$4,000 and Non-Homestead 40%					
																							Dollars
					Acres	100ths																	
Robert D. & Celestine Harper		1			NE 1/4 of NE 1/4	9 133.31	40	Yes	No	Yes													
Steve Jordahl		2			NW 1/4 of NE 1/4		40		"	"													
"	"	3			SW 1/4 of NE 1/4		40		"	"													
Robert D. & Celestine Harper		4			SE 1/4 of NE 1/4		40		"	"													
		5																					
Steve Jordahl		6			NE 1/4 of NW 1/4		40		"	"													
Delbert & Lester Newkirk		7			NW 1/4 of NW 1/4		40	Yes	"	"													
"	"	8			SW 1/4 of NW 1/4		40		"	"													
Steve Jordahl		9			SE 1/4 of NW 1/4		40	No	"	"													
		10																					
J. E. Ernst & Alice Rosvold		11			NE 1/4 of SW 1/4		40		"	"													
"	"	12			NW 1/4 of SW 1/4		40		"	"													
"	"	13			SW 1/4 of SW 1/4		40		"	"													
"	"	14			SE 1/4 of SW 1/4		40		"	"													
		15																					
Roy, Clifford, Woodrow & Connie Montgomery		16			NE 1/4 of SE 1/4		40	Yes	"	"													
"	"	17			NW 1/4 of SE 1/4		40		"	"													
"	"	18			SW 1/4 of SE 1/4		40		"	"													
"	"	19			SE 1/4 of SE 1/4		40		"	"													
		20																					
							640																

Cass County, Minnesota, for Taxes for the Year 1955.

SOLD FOR TAXES	VALUATIONS BY SCHOOL DISTRICTS AS EQUALIZED BY DEPARTMENT OF TAXATION						Tax including State Homestead	State Tax on Non-Homestead	SPECIAL TAXES	TOTAL TAXES	PAID	WHEN PAID	Number of Receipt	March Settlement 1956	June Settlement 1956	Penalty	November Settlement 1956	Penalty	Collections to First Monday in January 1957	Penalty	Delinquent on First Monday in January 1957	Total Delinquent Tax and Penalty	REMARKS
	District No.	District No.	District No.	District No.	District No.	District No.																	
	Rate	Rate	Rate	Rate	Rate	Rate																	
	Mills	Mills	Mills	Mills	Mills	Mills																	
1					148		3378	16		3454	1	PAID IN FULL APR 28 1956	5980		3454								
2					128		2922	66		2988	2	PAID IN FULL APR 24 1956	5568		2988								
3					110		2510	56		2566	3	PAID IN FULL APR 24 1956	5568		2566								
4					91		2076	48		2124	4	PAID IN FULL APR 28 1956	5915		2124								
5											5												
6					97		2214	60		2264	6	PAID IN FULL APR 24 1956	5568		2264								
7					H 210		4794			4794	7										4794		
8					H 61		1392			1392	8										1392		
9					67		1530	34		1564	9	PAID IN FULL APR 24 1956	5568		1564								
10											10												
11					H 53		1210			1210	11	2nd Half Paid OCT 31 1956											
12					H 188		4290			4290	12	1st Half Paid MAY 31 1956	15165		4234		4234						
13					H 70		1598			1598	13	2nd Half Paid OCT 31 1956	7190										
14					H 60		1370			1370	14	1st Half Paid MAY 31 1956											
15											15												
16					H 53		1210			1210	16	2nd Half Paid OCT 31 1956			605		605						
17					H 45		1028			1028	17	1st Half Paid MAY 31 1956	15659		514		514						
18					H 118		2694			2694	18	2nd Half Paid OCT 31 1956	6334		1347		1347						
19					H 53		1210			1210	19	1st Half Paid MAY 31 1956			605		605						
20					H 911		35426	330		35756	20				22265		7305				6186		

Assessment Roll and Tax List of Real Property in the Down of May,
 *Indicate Type of Property: R-Residential, C-Commercial, I-Industrial, U-Utility, F-Farm

Form SCD (55) - MILLER-DAY COMPANY, MINNEAPOLIS

IN WHOSE NAME ASSESSED	TO WHOM TRANSFERRED	DESCRIPTION OF PROPERTY						No. School District	Indicate Homestead Yes or No	Indicate Agricultural Yes or No	Indicate Type of Property	TRUE AND FULL VALUATIONS				ASSESSED VALUATIONS							Total Assessed Value as Equalized by the Board of Review	FINAL EQUALIZED VALUE
		SUBDIVISION	Sec. or Lot	Town or Block	Rng	Number of Acres of Land						LAND Exclusive of Structures and Improvements	BUILDINGS and Other Structures	MACHINERY Permanently Attached to Real Estate	TOTAL True and Full Value	RURAL		ALL OTHER		MACHINERY Permanently Attached to Real Estate	TOTAL ASSESSED VALUE			
						Acres	100ths									Homestead Up to \$4,000 20%	Over \$4,000 and Non-Homestead 33 1/3%	Homestead Up to \$1,000 25%	Over \$4,000 and Non-Homestead 40%					
																						Dollars		
Albert C. Bernth		1	NE 1/4 of NE 1/4	10	133	31	40	45	Yes															
"	"	2	NW 1/4 of NE 1/4				40		"	"														
"	"	3	SW 1/4 of NE 1/4				40		"	"														
"	"	4	SE 1/4 of NE 1/4				40		"	"														
		5																						
Amich Bernth		6	NE 1/4 of NW 1/4				40	70	"	"														
"	"	7	NW 1/4 of NW 1/4				40		"	"														
Albert C. Bernth		8	SW 1/4 of NW 1/4				40		"	"												77		
"	"	9	SE 1/4 of NW 1/4				40		"	"												73		
		10																						
"	"	11	NE 1/4 of SW 1/4				40		"	"												58		
"	"	12	NW 1/4 of SW 1/4				40		"	"												87		
"	"	13	SW 1/4 of SW 1/4				40		"	"												79		
"	"	14	SE 1/4 of SW 1/4				40		"	"												171		
		15																						
Bert A. & Delphine Quine		16	NE 1/4 of SE 1/4				40	Yes	"															
Albert C. Bernth		17	NW 1/4 of SE 1/4				40		"	"														
"	"	18	SW 1/4 of SE 1/4				40		"	"														
Bert A. & Delphine Quine		19	SE 1/4 of SE 1/4				40		"	"														
		20																						
							640																	

Cass County, Minnesota, for Taxes for the Year 1955.

SOLD FOR TAXES		VALUATIONS BY SCHOOL DISTRICTS AS EQUALIZED BY DEPARTMENT OF TAXATION						Tax Including State HomesteadMills	State Tax on Non- HomesteadMills	SPECIAL TAXES \$ cts.	TOTAL TAXES \$ cts.	PAID	WHEN PAID	Number of Receipt	March Settlement 1956	June Settlement 1956	Penalty	November Settlement 1956	Penalty	Collections to First Monday in January 1957	Penalty	Delinquent on First Monday in January 1957	Total Delinquent Tax and Penalty	REMARKS
		District No.	District No.	District No.	District No.	District No.	District No.																	
		Rate.....	Rate.....	Rate.....	Rate.....	Rate.....	Rate.....																	
	MillsMillsMillsMillsMillsMills																	
Dollars		Dollars	Dollars	Dollars	Dollars	Dollars	\$ cts.	\$ cts.	\$ cts.	\$ cts.	Month	Day	Year	\$ cts.	\$ cts.	\$ cts.	\$ cts.	\$ cts.	\$ cts.	\$ cts.	\$ cts.	\$ cts.	\$ cts.	
1	H 56						1194			1194	1	PAID IN FULL	OCT 31 1956											
2	H 76						1620			1620	2	PAID IN FULL	OCT 31 1956											
3	H 172						3666			3666	3	PAID IN FULL	OCT 31 1956	15668				8334						
4	H 87						1854			1854	4	PAID IN FULL	OCT 31 1956											
5											5													
6	77						1642	40		1682	6	2nd Half Paid OCT 31 1956 1st Half Paid MAY 31 1956	8749		1802	✓		1802						
7	88						1876	46		1922	7	2nd Half Paid OCT 31 1956 1st Half Paid MAY 31 1956	16161											
8	H 79						1684			1684	8	PAID IN FULL	MAY 31 1956	8756		3240	✓							
9	H 73						1556			1556	9	PAID IN FULL	MAY 31 1956											
10											10													
11	H 58						1236			1236	11	PAID IN FULL	MAY 31 1956											
12	H 87						1854			1854	12	PAID IN FULL	MAY 31 1956	8764		8420	✓							
13	H 79						1684			1684	13	PAID IN FULL	MAY 31 1956											
14	H 171						3646			3646	14	PAID IN FULL	MAY 31 1956											
15											15													
16	H 53						1130			1130	16	2nd Half Paid OCT 31 1956 1st Half Paid MAY 31 1956	15673 8707		565	✓		565						
17	H 45						960			960	17	PAID IN FULL	OCT 31 1956											
18	H 57						1216			1216	18	PAID IN FULL	OCT 31 1956	15668				2176						
19	H 112						2388			2388	19	2nd Half Paid OCT 31 1956 1st Half Paid MAY 31 1956	15673 8707		1194	✓		1194						
20	H 1205 165 1370						29206	86		29292	20				15221		14071							

Assessment Roll and Tax List of Real Property in the Down of May
*Indicate Type of Property: R-Residential, C-Commercial, I-Industrial, U-Utility, F-Farm

Form 5CD (55) WALKER-BAY'S COMPANY, MINNEAPOLIS												TRUE AND FULL VALUATIONS												ASSESSED VALUATIONS												FINAL
IN WHOSE NAME ASSESSED	TO WHOM TRANSFERRED	DESCRIPTION OF PROPERTY						No. School District	Indicate Homestead Yes or No	Indicate Agricultural Yes or No	Indicate Type of Property	LAND Exclusive of Structures and Improvements	BUILDINGS and Other Structures	MACHINERY Permanently Attached to Real Estate	TOTAL True and Full Value	RURAL		ALL OTHER		MACHINERY Permanently Attached to Real Estate	TOTAL ASSESSED VALUE	Total Assessed Value as Equalized by the Board of Review	FINAL EQUALIZE VALUE													
		SUBDIVISION	Sec. or Lot	Town or Block	Rng	Number of Acres of Land										Homestead Up to \$1,000 20%	Over \$4,000 and Non-Homestead 33 1/3 %	Homestead Up to \$1,000 25%	Over \$4,000 and Non-Homestead 40%																	
						Acres	100ths																	Dollars	Dollars	Dollars	Dollars	Dollars	Dollars	Dollars	Dollars					
Edna Knight Topp & Rudolph L. Topp		1		NE 1/4 of NE 1/4	11	133	31	40	2415	Yes	No																									
Jesse C. & Rose E. Rabb		2		NW 1/4 of NE 1/4				40		"	"																									
"	"	3		SW 1/4 of NE 1/4				40		"	"																									
Edna Knight Topp & Rudolph L. Topp		4		SE 1/4 of NE 1/4				40		"	"																									
		5																																		
Effie Dolan & Alice Isaacson		6		NE 1/4 of NW 1/4				40		"	"																									
"	"	7		NW 1/4 of NW 1/4				40		"	"																									
John A. Carlson		8		SW 1/4 of NW 1/4				40		"	"																									
"	"	9		SE 1/4 of NW 1/4				40		"	"																									
		10																																		
"	"	11		NE 1/4 of SW 1/4				40		"	"																									
"	"	12		NW 1/4 of SW 1/4				40		"	"																									
Bert A. & Delphine Guine		13		SW 1/4 of SW 1/4				40		"	"																									
"	"	14		SE 1/4 of SW 1/4				40		"	"																									
		15																																		
Edna Knight Topp & Rudolph L. Topp		16		NE 1/4 of SE 1/4				40		"	"																									
Bert A. & Delphine Guine		17		NW 1/4 of SE 1/4				40		"	"																									
Harvey L. & Isabel H. Hummels		18		SW 1/4 of SE 1/4				40		No	"																									
Edna Knight Topp & Rudolph L. Topp		19		SE 1/4 of SE 1/4				40		Yes	"																									
		20																																		

640

Cass County, Minnesota, for Taxes for the Year 1955.

SOLD FOR TAXES	VALUATIONS BY SCHOOL DISTRICTS AS EQUALIZED BY DEPARTMENT OF TAXATION						Tax including State Homestead	State Tax on Non-Homestead	SPECIAL TAXES	TOTAL TAXES	PAID	WHEN PAID	Number of Receipt	March Settlement 1956	June Settlement 1956	Penalty	November Settlement 1956	Penalty	Collections to First Monday in January 1957	Penalty	Delinquent on First Monday in January 1957	Total Delinquent Tax and Penalty	REMARKS
	District No.	District No.	District No.	District No.	District No.	District No.																	
	Rate	Rate	Rate	Rate	Rate	Rate																	
	Dollars	Dollars	Dollars	Dollars	Dollars	Dollars																	
1	H	53					11 30			11 30	1	2nd Half Paid OCT 22 1956										1130	
2	H	42					896			896	2	1st Half Paid MAY 31 1956	7188		448		448						
3	H	53					11 30			11 30	3	1st Half Paid OCT 22 1956	14793		565		565					1556	
4	H	73					1556			1556	4												
5											5												
6	H	198					4220			4220	6	PAID IN FULL MAY 31 1956	7193		5244								
7	H	48					1024			1024	7	PAID IN FULL MAY 31 1956											
8	H	58					1236			1236	8	PAID IN FULL MAY 31 1956			1236								
9	H	103					2196			2196	9	PAID IN FULL MAY 31 1956			2196								
10											10												
11	H	261					5564			5564	11	PAID IN FULL MAY 31 1956			5564								
12	H	54					1152			1152	12	PAID IN FULL MAY 31 1956			1152								
13	H	83					1770			1770	13	2nd Half Paid OCT 31 1956	8707		2868		2868						
14	H	186					3966			3966	14	1st Half Paid OCT 31 1956	15673										
15											15												
16	H	63					1344			1344	16	2nd Half Paid OCT 31 1956	15673		703		703					1344	
17	H	66					1406			1406	17	1st Half Paid MAY 31 1956	8707									1922	
18		88					1876	46		1922	18											6566	
19	H	308					6566			6566	19												
20											20												
	H	1649					37032	46		37078					19976		4584					12518	
		88																					
		1757																					

[illegible]

Assessment Roll and Tax List of Real Property in the Town of May,
*Indicate Type of Property: R-Residential, C-Commercial, I-Industrial, U-Utility, F-Farm

Form 5CD (55) MILLER-DAY COMPANY, MINNEAPOLIS

IN WHOSE NAME ASSESSED	TO WHOM TRANSFERRED	DESCRIPTION OF PROPERTY					No. School District	Indicate Homestead Yes or No	Indicate Agricultural Yes or No	Indicate Type of Property	TRUE AND FULL VALUATIONS				ASSESSED VALUATIONS							Total Assessed Value as Equalized by the Board of Review	FINAL EQUALIZED VALUE
		SUBDIVISION	Sec. or Lot	Town or Block	Rng.	Number of Acres of Land					LAND Exclusive of Structures and Improvements	BUILDINGS and Other Structures	MACHINERY Permanently Attached to Real Estate	TOTAL True and Full Value	RURAL		ALL OTHER		MACHINERY Permanently Attached to Real Estate	TOTAL ASSESSED VALUE			
															Homestead Up to \$1,000 20%	Over \$4,000 and Non-Homestead 33 1/3%	Homestead Up to \$1,000 25%	Over \$4,000 and Non-Homestead 40%					
																					Dollars		
Ole Haugen		1		NE 1/4 of NE 1/4		13 133 31	40																
C. L. Hannahs		2		NW 1/4 of NE 1/4			40																
"	"	3		SW 1/4 of NE 1/4			40																
Ole Haugen		4		SE 1/4 of NE 1/4			40																
		5																					
C. L. Hannahs		6		NE 1/4 of NW 1/4			40																
Franklin C. & Meriam Lopp		7		NW 1/4 of NW 1/4			40																
Leslie A. & Ethel F. Swanson		8		SW 1/4 of NW 1/4			40																
C. L. Hannahs		9		SE 1/4 of NW 1/4			40																
		10																					
Leslie A. & Ethel F. Swanson		11		NE 1/4 of SW 1/4			40																
"	"	12		NW 1/4 of SW 1/4			40																
"	"	13		SW 1/4 of SW 1/4			40																
"	"	14		SE 1/4 of SW 1/4			40																
		15																					
Leonard & Leona Fomshell		16		NE 1/4 of SE 1/4			40																
Pete Laalswyk		17		NW 1/4 of SE 1/4			40																
"	"	18		SW 1/4 of SE 1/4			40																
Leonard & Leona Fomshell		19		SE 1/4 of SE 1/4			40																
		20																					
							640																

Cass County, Minnesota, for Taxes for the Year 1955.

SOLD FOR TAXES	VALUATIONS BY SCHOOL DISTRICTS AS EQUALIZED BY DEPARTMENT OF TAXATION						Tax including State Homestead	State Tax on Non- Homestead	SPECIAL TAXES	TOTAL TAXES	PAID	WHEN PAID	Number of Receipt	March Settlement 1956	June Settlement 1956	Penalty	November Settlement 1956	Penalty	Collections to First Monday in January 1957	Penalty	Delinquent on First Monday in January 1957	Total Delinquent Tax and Penalty	REMARKS
	District No.	District No.	District No.	District No.	District No.	District No.																	
	Rate	Rate	Rate	Rate	Rate	Rate																	
	Mills	Mills	Mills	Mills	Mills	Mills																	
1		H	94				20 14			20 14	1 PAID IN FULL OCT 1 7 1956	14360								20 14	70		
2		H	66				14 14			14 14	2 PAID IN FULL MAY 31 1956	8715			25 70								
3		H	54				11 56			11 56	3 PAID IN FULL MAY 31 1956												
4		H	132				28 28			28 28	4 PAID IN FULL OCT 1 7 1956	14360								28 28	1 00		
5											5												
6		H	53				11 36			11 36	6 PAID IN FULL MAY 31 1956	8715			11 36								
7		H	90				19 28			19 28	7 PAID IN FULL MAY 31 1956	8706			19 28								
8		H	55				11 78			11 78	8 PAID IN FULL MAY 1 1 1956	6309			11 78								
9		H	53				11 36			11 36	9 PAID IN FULL MAY 31 1956	8715			11 36								
10											10												
11		H	75				16 06			16 06	11 PAID IN FULL MAY 1 1 1956												
12		H	178				42 40			42 40	12 PAID IN FULL MAY 1 1 1956	6309			89 94								
13		H	55				11 78			11 78	13 PAID IN FULL MAY 1 1 1956												
14		H	72				19 70			19 70	14 PAID IN FULL MAY 1 1 1956												
15											15												
16		H	58				12 42			12 42	16 PAID IN FULL MAY 31 1956	8715			12 42								
17		H	72				19 70			19 70	17										19 70		
18		H	67				14 36			14 36	18										14 36		
19		H	246				52 68			52 68	19 PAID IN FULL MAY 31 1956	8715			52 68								
20											20												
							H 1480			31700					23452		4842				3406		

Assessment Roll and Tax List of Real Property in the Town of May,
 *Indicate Type of Property: R-Residential, C-Commercial, I-Industrial, U-Utility, F-Farm

Form 5CD (55) MILLER-BAYNE COMPANY, MINNEAPOLIS

[illegible]

Cass County, Minnesota, for Taxes for the Year 1955.

SOLD FOR TAXES	VALUATIONS BY SCHOOL DISTRICTS AS EQUALIZED BY DEPARTMENT OF TAXATION						Tax Including State Homestead Mills	State Tax on Non-Homestead Mills	SPECIAL TAXES	TOTAL TAXES	PAID	WHEN PAID	Number of Receipt	March Settlement 1956	June Settlement 1956	Penalty	November Settlement 1956	Penalty	Collections to First Monday in January 1957	Penalty	Delinquent on First Monday in January 1957	Total Delinquent Tax and Penalty	REMARKS
	District No. 1-12	District No. 13-18	District No. 19-24	District No. 25-30	District No. 31-36	District No. 37-42																	
	Rate	Rate	Rate	Rate	Rate	Rate																	
	Mills	Mills	Mills	Mills	Mills	Mills																	
Dollars	Dollars	Dollars	Dollars	Dollars	Dollars	\$ cts.	\$ cts.	\$ cts.	\$ cts.	Month	Day	Year	\$ cts.	\$ cts.	\$ cts.	\$ cts.	\$ cts.	\$ cts.	\$ cts.	\$ cts.	\$ cts.	\$ cts.	
1 SOLD FOR TAXES	H 53						11 30			11 30	1										1130		
2 SOLD FOR TAXES	H 40						852			852	2										852		
3	H 53						11 30			11 30	3										1130		
4	H 52						11 08			11 08	4										1108		
5											5												
6	H 27						1854			1854	6	PAID IN FULL MAY 31 1956	8263		1854 ✓								
7	88						1876	46		1922	7	PAID IN FULL MAY 31 1956	7195		4148 ✓								
8	102						2174	52		2226	8	PAID IN FULL MAY 31 1956											
9	H 53						11 30			11 30	9	PAID IN FULL MAY 31 1956	8263		1130 ✓								
10											10												
11		H 75					1606			1606	11	2nd Half Paid OCT 31 1956 1st Half Paid MAY 31 1956	15672 8705		803		803						
12		88					1884	46		1930	12	PAID IN FULL MAY 31 1956	7195		3860								
13		88					1884	46		1930	13	PAID IN FULL MAY 31 1956											
14		H 307					6576			6576	14	2nd Half Paid OCT 31 1956 1st Half Paid MAY 31 1956	15672 8705		3288		3288						
15											15												
16 SOLD FOR TAXES	H 53						1130			1130	16										1130		
17 SOLD FOR TAXES	H 258						5526			5526	17										5526		
18 SOLD FOR TAXES	H 620						1328			1328	18										1328		
19 SOLD FOR TAXES	H 620						1328			1328	19										1328		
20	H 338 190 528	H 817 = 1155 176 = 316 993 1521					224-154 = 11254 " " #2 = 31262 32516	190		32706	20				15083		4091				13532		

Assessment Roll and Tax List of Real Property in the Down of May,
 *Indicate Type of Property: R-Residential, C-Commercial, I-Industrial, U-Utility, F-Farm

*Indicate Type of Property: R-Residential, C-Commercial, I-Industrial, U-Utility, F-Farm

[illegible]

Cass County, Minnesota, for Taxes for the Year 1955.

VALUATIONS BY SCHOOL DISTRICTS AS EQUALIZED BY DEPARTMENT OF TAXATION						Tax including State Homestead	State Tax on Non- Homestead	SPECIAL TAXES	TOTAL TAXES	PAID	WHEN PAID	Number of Receipt	March Settlement 1956	June Settlement 1956	Penalty	November Settlement 1956	Penalty	Collections to First Monday in January 1957	Penalty	Delinquent on First Monday in January 1957	Total Delinquent Tax and Penalty	REMARKS
District No.	District Rate	District No.	District Rate	District No.	District Rate																	
Mills	Mills	Mills	Mills	Mills	Mills																	
Dollars	Dollars	Dollars	Dollars	Dollars	Dollars	\$ cts.	\$ cts.	\$ cts.	\$ cts.	Month	Day	Year	\$ cts.	\$ cts.	\$ cts.	\$ cts.	\$ cts.	\$ cts.	\$ cts.	\$ cts.	\$ cts.	\$ cts.
1	80					1706	42		1748	1	PAID IN FULL	APR 25 1956	5603		1748 ✓							
2	H 110					2344			2344	2	2nd Half Paid	OCT 31 1956										
3	H 54					1152			1152	3	1st Half Paid	MAY 31 1956	8714		1748 ✓		1748					
4	125					2664	64		2728	4	PAID IN FULL	MAY 31 1956	7195		2728 ✓							
5										5												
6	H 34					724			724	6	2nd Half Paid	OCT 31 1956	15164									
7	101					2154	52		2206	7	1st Half Paid	MAY 31 1956	8714		362 ✓		362			2206		
8	60					1280	32		1312	8										1312		
9	H 55					1172			1172	9	2nd Half Paid	OCT 31 1956	15164									
10										10	1st Half Paid	MAY 31 1956	8714		586 ✓		586					
11						2192	50		2242	11										2242		
12						1370	32		1402	12										1402		
13						6346	144		6490	13										6490		
14						3744	84		3828	14										3828		
15										15												
16		H 62				1328			1328	16	1st Half Paid	AUG 4 1956				664				664	730	
17		H 44				942			942	17	1st Half Paid	AUG 4 1956	10739			471	71			471	518	
18		H 53				1136			1136	18	1st Half Paid	AUG 4 1956				568				568	625	
19		H 62				1328			1328	19	1st Half Paid	AUG 4 1956				664				664	730	
20	H 253 366 619	A 221				13196	429.52		32082	20				7172		5063				19847		
						598	74		4734													
						1438			31582													

Assessment Roll and Tax List of Real Property in the Down of May,
*Indicate Type of Property: R-Residential, C-Commercial, I-Industrial, U-Utility, F-Farm

Form 500 (55) WILSON-DAVIS COMPANY, MINNEAPOLIS

IN WHOSE NAME ASSESSED	TO WHOM TRANSFERRED	DESCRIPTION OF PROPERTY					No. School District	Indicate Homestead Yes or No	Indicate Agricultural Yes or No	Indicate Type of Property	TRUE AND FULL VALUATIONS				ASSESSED VALUATIONS						Total Assessed Value as Equalized by the Board of Review	FINAL EQUALIZED VALUE
		SUBDIVISION	Sec. or Lot	Town or Block	Rug	Number of Acres of Land					LAND Exclusive of Structures and Improvements	BUILDINGS and Other Structures	MACHINERY Permanently Attached to Real Estate	TOTAL True and Full Value	RURAL		ALL OTHER		MACHINERY Permanently Attached to Real Estate	TOTAL ASSESSED VALUE		
															Homestead Up to \$1,000 20%	Over \$4,000 and Non-Homestead 33 1/3%	Homestead Up to \$1,000 25%	Over \$4,000 and Non-Homestead 40%				
Martin Rosvold Rose Kamondy		NE 1/4 of NE 1/4	16	133	31	40	27	No	Yes													
"	"	NW 1/4 of NE 1/4				40		"	"													
"	"	SW 1/4 of NE 1/4 less 1 ac. school				39		"	"													
"	"	SE 1/4 of NE 1/4				40		"	"													
Adolph L. Rosvold		NE 1/4 of NW 1/4				40		"	"													
"	"	NW 1/4 of NW 1/4				40		"	"													
"	"	SW 1/4 of NW 1/4				40		"	"													
"	"	SE 1/4 of NW 1/4				40		"	"													
Virgil W. Parks		NE 1/4 of SW 1/4 less Ry Rt. Hwy				38.93		Yes	"													
Wm + Florence Morrow		NW 1/4 of SW 1/4 Lot 1 less Ry Rt. Hwy				33.22		"	"													
Virgil W. Parks		SW 1/4 of SW 1/4 Lot 2 " " " "				26.83		"	"													
"	"	SE 1/4 of SW 1/4 Lot 3 " " " "				27.08		"	"													
Elmer Rosvold																						
John Headland		NE 1/4 of SE 1/4				40		No	"												4.50	
"	"	NW 1/4 of SE 1/4				40		"	"												4.46	
L. L. Nelson & Co. Inc.		SW 1/4 of SE 1/4 Lot 4 less Ry				34.69		"	"													
"	"	SE 1/4 of SE 1/4				40		"	"													
						599.55																

Cass County, Minnesota, for Taxes for the Year 1955.

SOLD FOR TAXES	VALUATIONS BY SCHOOL DISTRICTS AS EQUALIZED BY DEPARTMENT OF TAXATION						Tax including State Homestead	State Tax on Non-Homestead	SPECIAL TAXES	TOTAL TAXES	PAID	WHEN PAID	Number of Receipt	March Settlement 1955	June Settlement 1955	Penalty	November Settlement 1955	Penalty	Collections to First Monday in January 1957	Penalty	Delinquent on First Monday in January 1957	Total Delinquent Tax and Penalty	REMARKS
	District No.	District No.	District No.	District No.	District No.	District No.																	
	Rate	Rate	Rate	Rate	Rate	Rate																	
	Mills	Mills	Mills	Mills	Mills	Mills																	
1						97	22.14	50		22.64	1	1st Half Paid OCT 9 1955											
2						323	73.72	166		75.38	2	1st Half Paid MAY 31 1955	14776		37.69		37.69						
3						157	35.84	82		36.66	3	1st Half Paid MAY 31 1955	1315		18.33		18.33						
4						105	23.96	54		24.50	4	1st Half Paid MAY 31 1955			12.25		12.25						
5											5												
6						H 83	18.94			18.94	6	PAID IN FULL OCT 1 9 1955											
7						H 78	17.80			17.80	7	PAID IN FULL OCT 1 9 1955	14715				6938 2 43						
8						H 56	12.78			12.78	8	PAID IN FULL OCT 1 9 1955											
9						H 87	19.86			19.86	9	PAID IN FULL OCT 1 9 1955											
10											10												
11						H 92	21.00			21.00	11	2nd Half Paid SEP 1 2 1955	13953		10.50		10.50						
12						H 225	51.36			51.36	12	PAID IN FULL MAY 31 1955	8876		51.36								
13						H 59	13.46			13.46	13	2nd Half Paid SEP 1 2 1955	13953		6.73		6.73						
14						H 43	9.82			9.82	14	2nd Half Paid SEP 1 2 1955	13953		4.91		4.91						
15											15												
16						H 30	11.42			11.42	16	2nd Half Paid OCT 3 1 1955	2190		10.96		10.96						
17						H 46	10.50			10.50	17	2nd Half Paid OCT 3 1 1955	15165										
18						108	24.64	56		25.20	18	PAID IN FULL JAN 1 9 1956	147	53.44									
19						121	27.62	62		28.24	19	PAID IN FULL JAN 1 9 1956											
20						H 819	39.486	410		39.956	20			53.44	164.05		182.07						

Assessment Roll and Tax List of Real Property in the Town of May,
*Indicate Type of Property: R-Residential, C-Commercial, I-Industrial, U-Utility, F-Farm

Form SCD (55) JULY-1946 COMPANY, MINNEAPOLIS

IN WHOSE NAME ASSESSED	TO WHOM TRANSFERRED	DESCRIPTION OF PROPERTY					TRUE AND FULL VALUATIONS												ASSESSED VALUATIONS					FINAL EQUALIZED VALUE																																																																																																																																																																																																																																																																																																																																																																																																																																																																																																																																																																																																																																																																																																																																																																																																																																																																																																																																																																																																																																																																																																																																																																																																												
		SUBDIVISION	Sec. or Lot	Town or Block	Rng	Number of Acres of Land	No. School District	Indi- cate Hous- ing Yes or No	Indi- cate Agricultural Yes or No	Indi- cate Type of Prop- erty	LAND Exclusive of Structures and Improvements	BUILDINGS and Other Structures	MACHINERY Permanently Attached to Real Estate	TOTAL True and Full Value	RURAL		ALL OTHER		MACHINERY Permanently Attached to Real Estate 33 1/8 %	TOTAL ASSESSED VALUE	Total Assessed Value as Equalized by the Board of Review																																																																																																																																																																																																																																																																																																																																																																																																																																																																																																																																																																																																																																																																																																																																																																																																																																																																																																																																																																																																																																																																																																																																																																																																															
															Homestead Up to \$4,000 20%	Over \$4,000 and Non- Homestead 33 1/3 %	Homestead Up to \$1,000 25%	Over \$4,000 and Non- Homestead 40%																																																																																																																																																																																																																																																																																																																																																																																																																																																																																																																																																																																																																																																																																																																																																																																																																																																																																																																																																																																																																																																																																																																																																																																																																		
																						Dollars	Dollars		Dollars	Dollars	Dollars	Dollars																																																																																																																																																																																																																																																																																																																																																																																																																																																																																																																																																																																																																																																																																																																																																																																																																																																																																																																																																																																																																																																																																																																																																																																																								
Conrad B. Rosvold		1		NE 1/4 of NE 1/4		17 133.31	40																																																																																																																																																																																																																																																																																																																																																																																																																																																																																																																																																																																																																																																																																																																																																																																																																																																																																																																																																																																																																																																																																																																																																																																																																													</

Cass County, Minnesota, for Taxes for the Year 1955.

SOLD FOR TAXES	VALUATIONS BY SCHOOL DISTRICTS AS EQUALIZED BY DEPARTMENT OF TAXATION						Tax including State Homestead	State Tax on Non-Homestead	SPECIAL TAXES	TOTAL TAXES	PAID	WHEN PAID	Number of Receipt	March Settlement 1956	June Settlement 1956	Penalty	November Settlement 1956	Penalty	Collections to First Monday in January 1957	Penalty	Delinquent on First Monday in January 1957	Total Delinquent Tax and Penalty	REMARKS
	District No.	District No.	District No.	District No.	District No.	District No.																	
	Rate	Rate	Rate	Rate	Rate	Rate																	
	Mills	Mills	Mills	Mills	Mills	Mills																	
1				H	57		1300			1306		1 PAID IN FULL MAY 31 1956	10051		1306								
2				H	53		1210			1210		2 PAID IN FULL APR 13 1956	5746		1210								
3 SOLD FOR TAXES				H	24		548			548		3									548		
4				H	51		1164			1164		4 PAID IN FULL MAY 31 1956	10051		1164								
5				H	2		46			46		5 PAID IN FULL MAY 31 1956	8876		46								
6				H	46		1050			1050		6 PAID IN FULL MAY 31 1956	8147		2762								
7				H	75		1712			1712		7 PAID IN FULL MAY 31 1956											
8																							
9																							
10																							
11																							
12 SOLD FOR TAXES				H	53		1210			1210		12									1210		
13 SOLD FOR TAXES				H	30		684			684		13									684		
14																							
15				H	53		1210			1210		15 PAID IN FULL MAY 31 1956	8876		1210								
16				H	2		46			46		16 PAID IN FULL MAY 31 1956	10051		46								
17																							
18				H	90		2054			2054		18 PAID IN FULL MAY 31 1956	8876		2054								
19																							
20 SOLD FOR TAXES				H	86		2008	46		2054		20									2054		
					536		14242	46		14288					9792						4496		
					624																		

Form SCD (55) MILLER-BAVE COMPANY, MINNEAPOLIS

Personal

	SOLD FOR TAXES	VALUATIONS BY SCHOOL DISTRICTS AS EQUALIZED BY DEPARTMENT OF TAXATION						Tax including State Homestead	State Tax on Non- Homestead	SPECIAL TAXES	TOTAL TAXES	PAID	WHEN PAID	Number of Receipt	March Settlement 1956	June Settlement 1956	Penalty	November Settlement 1956	Penalty	Collections to First Monday in January 1957	Penalty	Delinquent on First Monday in January 1957	Total Delinquent Tax and Penalty	REMARKS
		District No. Rate.....Mills	District No. Rate.....Mills	District No. Rate.....Mills	District No. Rate.....Mills	District No. Rate.....Mills	\$ cts. Mills	\$ cts. Mills	\$ cts.	\$ cts.	\$ cts.	Month Day Year		\$ cts.	\$ cts.	\$ cts.	\$ cts.	\$ cts.	\$ cts.	\$ cts.	\$ cts.	\$ cts.		
1	SOLD FOR TAXES				H 101		2306				2306	1										2306		
2					H 85		1940				1940	2	2nd Half Paid OCT 31 1956 1st Half Paid MAY 31 1956	15698 8724	970'		970'							
3												3												
4	SOLD FOR TAXES				H 133		3036				3036	4										3036		
5												5												
6												6												
7												7												
8												8												
9												9												
10												10												
11												11												
12												12												
13												13												
14												14												
15												15												
16	SOLD FOR TAXES				H 31		708				708	16										708		
17												17												
18												18												
19												19												
20												20												
					H 350		7990				7990				970		970					6050		

Assessment Roll and Tax List of Real Property in the Down of Map,
*Indicate Type of Property: R-Residential, C-Commercial, I-Industrial, U-Utility, F-Farm

Form SCD (55) JULY-1954 ESTATE COMPANY, MINNEAPOLIS

IN WHOSE NAME ASSESSED	TO WHOM TRANSFERRED	DESCRIPTION OF PROPERTY					No. School District	Indicate Homestead Yes or No	Indicate Agricultural Yes or No	Indicate Type of Property	TRUE AND FULL VALUATIONS				ASSESSED VALUATIONS							FINAL EQUALIZE VALUE Dollars
		SUBDIVISION	Sec. or Lot	Town or Block	Rng	Number of Acres of Land					LAND Exclusive of Structures and Improvements	BUILDINGS and Other Structures	MACHINERY Permanently Attached to Real Estate	TOTAL True and Full Value	RURAL		ALL OTHER		MACHINERY Permanently Attached to Real Estate	TOTAL ASSESSED VALUE	Total Assessed Value as Equalized by the Board of Review	
															Homestead Up to \$4,000 20%	Over \$4,000 and Non-Homestead 33 1/3%	Homestead Up to \$4,000 25%	Over \$4,000 and Non-Homestead 40%				
Acres	100ths	Dollars	Dollars	Dollars	Dollars	Dollars	Dollars	Dollars	Dollars	Dollars	Dollars	Dollars	Dollars	Dollars	Dollars	Dollars						
		1	NE 1/4 of NE 1/4	20	133	31	27															
		2	NW 1/4 of NE 1/4																			
		3	SW 1/4 of NE 1/4																			
		4	SE 1/4 of NE 1/4																			
		5																				
Bernard Dilly		6	NE 1/4 of NW 1/4	Lot 4		9	72	70	Yes													
		7	NW 1/4 of NW 1/4																			
		8	SW 1/4 of NW 1/4																			
		9	SE 1/4 of NW 1/4																			
		10																				
		11	NE 1/4 of SW 1/4																			
		12	NW 1/4 of SW 1/4																			
		13	SW 1/4 of SW 1/4																			
		14	SE 1/4 of SW 1/4																			
		15																				
		16	NE 1/4 of SE 1/4																			
		17	NW 1/4 of SE 1/4																			
		18	SW 1/4 of SE 1/4																			
		19	SE 1/4 of SE 1/4																			
		20																				

Bernard Dilley

97✓

Cass County, Minnesota, for Taxes for the Year 1955.

SOLD FOR TAXES	VALUATIONS BY SCHOOL DISTRICTS AS EQUALIZED BY DEPARTMENT OF TAXATION						Tax including State Homestead	State Tax on Non- Homestead	SPECIAL TAXES	TOTAL TAXES	PAID	WHEN PAID	Number of Receipt	March Settlement 1956	June Settlement 1956	Penalty	November Settlement 1956	Penalty	Collections to First Monday in January 1957	Penalty	Delinquent on First Monday in January 1957	Total Delinquent Tax and Penalty	REMARKS
	District No.	District No.	District No.	District No.	District No.	District No.																	
	Rate	Rate	Rate	Rate	Rate	Rate																	
	Mills	Mills	Mills	Mills	Mills	Mills																	
1																							
2																							
3																							
4																							
5																							
6																							
7																							
8																							
9																							
10																							
11																							
12																							
13																							
14																							
15																							
16																							
17																							
18																							
19																							
20																							

22 502 12 514

514

Assessment Roll and Tax List of Real Property in the Down of May,
*Indicate Type of Property: R-Residential, C-Commercial, I-Industrial, U-Utility, F-Farm

Form SCD (55) BILLS-BAYE COMPANY, MINNEAPOLIS

IN WHOSE NAME ASSESSED	TO WHOM TRANSFERRED	DESCRIPTION OF PROPERTY					No. School District	Indicate Homestead Yes or No	Indicate Agricultural Yes or No	Indicate Type of Property	TRUE AND FULL VALUATIONS				ASSESSED VALUATIONS							FINAL EQUALIZED VALUE		
		SUBDIVISION	Sec. or Lot	Town or Block	Range	Number of Acres of Land					LAND Exclusive of Structures and Improvements	BUILDINGS and Other Structures	MACHINERY Permanently Attached to Real Estate	TOTAL True and Full Value	RURAL		ALL OTHER		MACHINERY Permanently Attached to Real Estate	TOTAL ASSESSED VALUE	Total Assessed Value as Equalized by the Board of Review			
															Homestead Up to \$4,000 20%	Over \$4,000 and Non-Homestead 33 1/3%	Homestead Up to \$4,000 25%	Over \$4,000 and Non-Homestead 40%						
Dollars	Dollars	Dollars	Dollars	Dollars	Dollars	Dollars	Dollars	Dollars	Dollars	Dollars	Dollars	Dollars	Dollars	Dollars	Dollars	Dollars								
L. L. Nelson & Co. Inc.	1	NE 1/4 of NE 1/4 Lot 1	21	133	31	26	38	27																
	2	NW 1/4 of NE 1/4																						
	3	SW 1/4 of NE 1/4																						
	4	SE 1/4 of NE 1/4																						
	5																							
	6	NE 1/4 of NW 1/4																						
	7	NW 1/4 of NW 1/4																						
	8	SW 1/4 of NW 1/4																						
	9	SE 1/4 of NW 1/4																						
	10																							
	11	NE 1/4 of SW 1/4																						
	12	NW 1/4 of SW 1/4																						
	13	SW 1/4 of SW 1/4																						
	14	SE 1/4 of SW 1/4																						
	15																							
	16	NE 1/4 of SE 1/4																						
	17	NW 1/4 of SE 1/4																						
	18	SW 1/4 of SE 1/4																						
	19	SE 1/4 of SE 1/4																						
	20																							
						2638																		

2638

Cass County, Minnesota, for Taxes for the Year 1955.

SOLD FOR TAXES	VALUATIONS BY SCHOOL DISTRICTS AS EQUALIZED BY DEPARTMENT OF TAXATION						Tax including State Homestead	State Tax on Non-Homestead	SPECIAL TAXES	TOTAL TAXES	PAID	WHEN PAID	Number of Receipt	March Settlement 1956	June Settlement 1956	Penalty	November Settlement 1956	Penalty	Collections to First Monday in January 1957	Penalty	Delinquent on First Monday in January 1957	Total Delinquent Tax and Penalty	REMARKS
	District No.	District No.	District No.	District No.	District No.	District No.																	
	Rate	Rate	Rate	Rate	Rate	Rate																	
	Mills	Mills	Mills	Mills	Mills	Mills																	
1							57	1300	30	1330	1	PAID IN FULL JAN 19 1956	148	1330									
2											2												
3											3												
4											4												
5											5												
6											6												
7											7												
8											8												
9											9												
10											10												
11											11												
12											12												
13											13												
14											14												
15											15												
16											16												
17											17												
18											18												
19											19												
20											20												

57

1300

30

1330

1330

*Indicate Type of Property: R-Residential, C-Commercial, I-Industrial, U-Utility, F-Farm

Form 5CD (55) MILLER-DAVIS COMPANY, MINNEAPOLIS

134-31[illegible]

Assessment Roll and Tax List of Real Property in the Down of May,
 *Indicate Type of Property: R-Residential, C-Commercial, I-Industrial, U-Utility, F-Farm

Form SCD (55) - MILLAGE-RATE SUMMARY, MINNESOTA

IN WHOSE NAME ASSESSED	TO WHOM TRANSFERRED	DESCRIPTION OF PROPERTY					No. School District	Indicate Homestead Tax or No	Indicate Agricultural Tax or No	Indicate Type of Property	TRUE AND FULL VALUATIONS				ASSESSED VALUATIONS						Total Assessed Value as Equalized by the Board of Review	FINAL EQUALIZED VALUE
		SUBDIVISION	Sec. or Lot	Town or Block	Rd#	Number of Acres of Land					LAND Exclusive of Structures and Improvements	BUILDINGS and Other Structures	MACHINERY Permanently Attached to Real Estate	TOTAL True and Full Value	RURAL		ALL OTHER		MACHINERY Permanently Attached to Real Estate	TOTAL ASSESSED VALUE		
															Homestead Up to \$1,000 20%	Over \$4,000 and Non-Homestead 33 1/3%	Homestead Up to \$1,000 25%	Over \$4,000 and Non-Homestead 40%				
						Acres	100ths				Dollars	Dollars	Dollars	Dollars	Dollars	Dollars	Dollars	Dollars	Dollars	Dollars		
Pete Laabswoyk		1	NE 1/4 of NE 1/4	23	133	31	40	Yes	Yes													
"	"	2	NW 1/4 of NE 1/4				40	"	"													
"	"	3	SW 1/4 of NE 1/4				40	"	"													
"	"	4	SE 1/4 of NE 1/4				40	"	"													
		5																				
Lo Leslie & J. Kasky Carlson		6	NE 1/4 of NW 1/4				40	"	"													
"	"	7	NW 1/4 of NW 1/4				40	"	"													
Alfred R. Hoyle, Jr.		8	SW 1/4 of NW 1/4				40	No	"													
"	"	9	SE 1/4 of NW 1/4				40	"	"													
St Olaf College		10	all 1/2 of NW 1/4 S. of Ry. Rte. 1/2				37.21	"	"													
Alfred R. Hoyle, Jr.		11	all NW 1/4 of NW 1/4				18.79	"	"													
		12	NW 1/4 of SW 1/4																			
St Olaf College		13	SW 1/4 of SW 1/4 Lot 1				39.41	"	"													
"	"	14	SE 1/4 of SW 1/4				40	"	"													
Pete Laabswoyk		15	all 1/2 of Ry. of SE 1/4				9	Yes	"													
St Olaf College, Westfield		16	SE 1/4 less all 1/2 of Ry. & less 2 1/2 ac.				120.38	No	"													
		17	NW 1/4 of SE 1/4																			
		18	SW 1/4 of SE 1/4																			
		19	SE 1/4 of SE 1/4																			
St Olaf College		20	2 1/2 ac. of NW 1/4 of SE 1/4 S. of Ry.				6.38	No	"													
							591.17															

Cass County, Minnesota, for Taxes for the Year 1955.

SOLD FOR TAXES	VALUATIONS BY SCHOOL DISTRICTS AS EQUALIZED BY DEPARTMENT OF TAXATION						Tax including State Homestead	State Tax on Non-Homestead	SPECIAL TAXES	TOTAL TAXES	PAID	WHEN PAID	Number of Receipt	March Settlement 1956	June Settlement 1956	Penalty	November Settlement 1956	Penalty	Collections to First Monday in January 1957	Penalty	Delinquent on First Monday in January 1957	Total Delinquent Tax and Penalty	REMARKS
	District No.	District No.	District No.	District No.	District No.	District No.																	
	Rate	Rate	Rate	Rate	Rate	Rate																	
	Mills	Mills	Mills	Mills	Mills	Mills																	
1		H	40				856			856	1										856		
2		H	44				942			942	2										942		
3		H	62				1328			1328	3										1328		
4		H	100				2142			2142	4										2142		
5											5												
6		H	107				2292			2292	6	2nd Half Paid OCT 31 1956											
7		H	62				1328			1328	7	1st Half Paid MAY 31 1956	8705		1146		1146						
8			141				3192	78		3270	8	2nd Half Paid OCT 31 1956	15672		664		664				3270		
9			200				4284	104		4388	9	1st Half Paid MAY 31 1956									4388		
10			38				814	20		834	10	PAID IN FULL MAY 31 1956	8731		834								
11			110				2356	56		2412	11	PAID IN FULL MAY 31 1956	8730		2412								
12											12												
13			39				836	20		856	13	PAID IN FULL MAY 31 1956	8731		856								
14			40				856	20		876	14	PAID IN FULL MAY 31 1956	8731		876								
15		H	6				128			128	15										128		
16			264				5654	136		5790	16	PAID IN FULL MAY 31 1956	8731		5790								
17											17												
18											18												
19											19												
20		H	12				258	06		264	20	PAID IN FULL MAY 31 1956	8731		264								
			421				27266	440		27706					12842		1810				13054		
			852																				
			1275																				

Assessment Roll and Tax List of Real Property in the Down of May,
 *Indicate Type of Property: R-Residential, C-Commercial, I-Industrial, U-Utility, F-Farm

Form SCD (55) WILSON-BAYNE COMPANY, MINNEAPOLIS

IN WHOSE NAME ASSESSED	TO WHOM TRANSFERRED	DESCRIPTION OF PROPERTY					No. School District	Indicate Homestead Yes or No	Indicate Agricultural Yes or No	Indicate Type of Property	TRUE AND FULL VALUATIONS				ASSESSED VALUATIONS					Total Assessed Value as Equalized by the Board of Review	FINAL EQUALIZED VALUE	
		SUBDIVISION	Sec. or Lot	Town or Block	Rng	Number of Acres of Land					LAND Exclusive of Structures and Improvements	BUILDINGS and Other Structures	MACHINERY Permanently Attached to Real Estate	TOTAL True and Full Value	RURAL		ALL OTHER		MACHINERY Permanently Attached to Real Estate			TOTAL ASSESSED VALUE
															Homestead Up to \$4,000 20%	Over \$4,000 and Non-Homestead 33 1/8%	Homestead Up to \$4,000 25%	Over \$4,000 and Non-Homestead 40%				
						Acres					Dollars	Dollars	Dollars	Dollars	Dollars	Dollars	Dollars	Dollars	Dollars	Dollars		
Peter yde & Lena yde		NE 1/4 of NE 1/4 less Ry Rtg	24	133	31	39.75	15	No														
"	"	NW 1/4 of NE 1/4				40		"														
"	"	all of 1/2 of NE 1/4 lying N of Ry.				18.92		"														
		SE 1/4 of NE 1/4						"														
St Olaf College, Northfield		all 1/2 of Ry of 1/2 of NE 1/4				36.37		"														
Pete Haalswyk		NE 1/4 of NW 1/4				40		Yes														
"	"	NW 1/4 of NW 1/4 less 1 ac. school				39		"														
"	"	SW 1/4 of NW 1/4 less 2.86 ac. Ry Rtg				37.14		"														
"	"	SE 1/4 of NW 1/4 less 11.79 ac				28.51		"														
St Olaf College, Northfield		NE 1/4 of SW 1/4 less 4.36 Ry Rtg				35.64		No														
"	"	NW 1/4 of SW 1/4 less 6.20 " " "				33.80		"														
"	"	SW 1/4 of SW 1/4				40		"														
"	"	SE 1/4 of SW 1/4				40		"														
"	"	NE 1/4 of SE 1/4				40		"														
"	"	NW 1/4 of SE 1/4				40		"														
"	"	SW 1/4 of SE 1/4				40		"														
"	"	SE 1/4 of SE 1/4				40		"														
						589.18																

Cass County, Minnesota, for Taxes for the Year 1955.

SOLD FOR TAXES	VALUATIONS BY SCHOOL DISTRICTS AS EQUALIZED BY DEPARTMENT OF TAXATION						Tax including State Homestead	State Tax on Non-Homestead	SPECIAL TAXES	TOTAL TAXES	PAID	WHEN PAID	Number of Receipt	March Settlement 1956	June Settlement 1956	Penalty	November Settlement 1956	Penalty	Collections to First Monday in January 1957	Penalty	Delinquent on First Monday in January 1957	Total Delinquent Tax and Penalty	REMARKS
	District No.	District No.	District No.	District No.	District No.	District No.																	
	Rate	Rate	Rate	Rate	Rate	Rate																	
	Dollars	Dollars	Dollars	Dollars	Dollars	Dollars	\$ cts.	\$ cts.	\$ cts.	\$ cts.		Month Day Year		\$ cts.	\$ cts.	\$ cts.	\$ cts.	\$ cts.	\$ cts.	\$ cts.	\$ cts.	\$ cts.	\$ cts.
1			123				2634	64		269'8	1	PAID IN FULL MAY 31 1956			269'8								
2			66				1414	34		144'8	2	PAID IN FULL MAY 31 1956	8365		144'8								
3			38				814	20		83'4	3	PAID IN FULL MAY 31 1956			83'4								
4																							
5			72				1970	48		201'8	5	PAID IN FULL MAY 31 1956	8732		201'8								
6	SOLD FOR TAXES	H	70				1500			1500	6										1500		
7	SOLD FOR TAXES	H	57				1220			1220	7										1220		
8	SOLD FOR TAXES	H	57				1220			1220	8										1220		
9	SOLD FOR TAXES	H	36				772			772	9										772		
10																							
11			451				9660	234		989'4	11	PAID IN FULL MAY 31 1956			989'4								
12			77				1650	40		169'0	12	PAID IN FULL MAY 31 1956	8732		169'0								
13			78				2098	50		214'8	13	PAID IN FULL MAY 31 1956			214'8								
14			74				1584	38		162'2	14	PAID IN FULL MAY 31 1956			162'2								
15																							
16			559				11972	290		1226'2	16	PAID IN FULL MAY 31 1956											
17			44				942	22		964	17	PAID IN FULL MAY 31 1956	8732		1642'6								
18			102				2184	52		223'6	18	PAID IN FULL MAY 31 1956											
19			44				942	22		964	19	PAID IN FULL MAY 31 1956											
20																							
			H 220 1768 1988				42576	914		43490					38778						4712		

Assessment Roll and Tax List of Real Property in the Down of Map,
*Indicate Type of Property: R-Residential, C-Commercial, I-Industrial, U-Utility, F-Farm

FORM 3CD (55) MILLER-DAY'S COMPANY, MINNEAPOLIS											TRUE AND FULL VALUATIONS											ASSESSED VALUATIONS							Total Assessed Value as Equalized by the Board of Review	FINAL EQUALIZED VALUE
IN WHOSE NAME ASSESSED	TO WHOM TRANSFERRED	DESCRIPTION OF PROPERTY					No. School District	Indicate Homestead Yes or No	Indicate Agricultural Yes or No	Indicate Type of Property	LAND Exclusive of Structures and Improvements	BUILDINGS and Other Structures	MACHINERY Permanently Attached to Real Estate	TOTAL True and Full Value	RURAL		ALL OTHER		MACHINERY Permanently Attached to Real Estate	TOTAL ASSESSED VALUE	Dollars									
		SUBDIVISION	Sec. or Lot	Town or Block	Rng	Number of Acres of Land									Homestead Up to \$1,000 20%	Over \$4,000 and Non-Homestead 33 1/3%	Homestead Up to \$1,000 25%	Over \$4,000 and Non-Homestead 40%												
																						Acres	100ths							
Peter yde & Lena yde		1	NE 1/4 of NE 1/4 less Rght by 24 133 31			3975	45	No																						
"	"	2	NW 1/4 of NE 1/4			40		"																						
"	"	3	all of S 1/2 of NE 1/4 by org N of Rgt. SW 1/4 of NE 1/4			1892		"																						
		4	SE 1/4 of NE 1/4																											
St Olaf College, Northfield		5	all S of Rgt of S 1/2 of NE 1/4			3637		"																						
Pete Haalswyk		6	NE 1/4 of NW 1/4			40		Yes																						
"	"	7	NW 1/4 of NW 1/4 less 1 ac. school			39		"																						
"	"	8	SW 1/4 of NW 1/4 less 2.86 acs Rght by 24 133 31			3714		"																						
"	"	9	SE 1/4 of NW 1/4 less 11.49 acs			2851		"																						
		10																												
St Olaf College, Northfield		11	NE 1/4 of SW 1/4 less 4.36 Rgt by 24 133 31			3564		No																						
"	"	12	NW 1/4 of SW 1/4 less 6.20 " " "			3380		"																						
"	"	13	SW 1/4 of SW 1/4			40		"																						
"	"	14	SE 1/4 of SW 1/4			40		"																						
		15																												
"	"	16	NE 1/4 of SE 1/4			40		"																						
"	"	17	NW 1/4 of SE 1/4			40		"																						
"	"	18	SW 1/4 of SE 1/4			40		"																						
"	"	19	SE 1/4 of SE 1/4			40		"																						
		20																												
						589 18																								

Cass County, Minnesota, for Taxes for the Year 1955.

SOLD FOR TAXES	VALUATIONS BY SCHOOL DISTRICTS AS EQUALIZED BY DEPARTMENT OF TAXATION						Tax including State Homestead	State Tax on Non-Homestead	SPECIAL TAXES	TOTAL TAXES	PAID	WHEN PAID	Number of Receipt	March Settlement 1956	June Settlement 1956	Penalty	November Settlement 1956	Penalty	Collections to First Monday in January 1957	Penalty	Delinquent on First Monday in January 1957	Total Delinquent Tax and Penalty	REMARKS
	District No.	District No.	District No.	District No.	District No.	District No.																	
	Rate	Rate	Rate	Rate	Rate	Rate																	
	Mills	Mills	Mills	Mills	Mills	Mills																	
1			123				2634	64		2698	1	PAID IN FULL MAY 31 1956											
2			66				1414	34		1448	2	PAID IN FULL MAY 31 1956											
3			38				814	20		834	3	PAID IN FULL MAY 31 1956											
4											4												
5			92				1970	48		2018	5	PAID IN FULL MAY 31 1956											
6	SOLD FOR TAXES		H 70				1500			1500	6											1500	
7	SOLD FOR TAXES		H 57				1220			1220	7											1220	
8	SOLD FOR TAXES		H 57				1220			1220	8											1220	
9	SOLD FOR TAXES		H 36				772			772	9											772	
10											10												
11			451				9660	234		9894	11	PAID IN FULL MAY 31 1956											
12			77				1650	40		1690	12	PAID IN FULL MAY 31 1956											
13			98				2098	50		2148	13	PAID IN FULL MAY 31 1956											
14			14				1584	38		1622	14	PAID IN FULL MAY 31 1956											
15											15												
16			559				11970	290		12262	16	PAID IN FULL MAY 31 1956											
17			44				942	22		964	17	PAID IN FULL MAY 31 1956											
18			102				2184	52		2236	18	PAID IN FULL MAY 31 1956											
19			44				942	22		964	19	PAID IN FULL MAY 31 1956											
20			H 220 1768 1988				42576	914		43490	20												

Form 5CD (55) MILLER-DAVIS COMPANY, MINNEAPOLIS

230 64

no. 2

2895

Assessment Roll and Tax List of Real Property in the Town of May,
*Indicate Type of Property: R-Residential, C-Commercial, I-Industrial, U-Utility, F-Farm

Form SCD (55) HILLS-BAYN COMPANY, MINNEAPOLIS

Form SCD (55) HILLIS-BAYNE COMPANY, MINNEAPOLIS																							
IN WHOSE NAME ASSESSED	TO WHOM TRANSFERRED	DESCRIPTION OF PROPERTY						No. School District	Indicate Homestead Yes or No	Indicate Agricultural Yes or No	Indicate Type of Property	TRUE AND FULL VALUATIONS				ASSESSED VALUATIONS						Total Assessed Value as Equalized by the Board of Review	FINAL EQUALIZED VALUE
		SUBDIVISION	Sec. of Lot	Town or Block	Range	Number of Acres of Land						LAND Exclusive of Structures and Improvements	BUILDINGS and Other Structures	MACHINERY Permanently Attached to Real Estate	TOTAL True and Full Value	RURAL		ALL OTHER		MACHINERY Permanently Attached to Real Estate	TOTAL ASSESSED VALUE		
						Acres	100ths									Homestead Up to \$4,000 20%	Over \$4,000 and Non-Homestead 33 1/3 %	Homestead Up to \$4,000 25%	Over \$4,000 and Non-Homestead 40%				
Ralph L. & Lydia M. Larson		1		NE 1/4 of NE 1/4	26 133 31	40																	
"	"	2		NW 1/4 of NE 1/4		54 70																	
		3		SW 1/4 of NE 1/4																			
Minn. Power & Light Co.		4		SE 1/4 of NE 1/4	Lot 4	38 60																	
		5																					
"	"	6		NE 1/4 of NW 1/4	Lot 2	39 48																	
"	"	7		NW 1/4 of NW 1/4	Lot 1	29 96																	
		8		SW 1/4 of NW 1/4																			
		9		SE 1/4 of NW 1/4																			
		10																					
		11		NE 1/4 of SW 1/4																			
		12		NW 1/4 of SW 1/4																			
		13		SW 1/4 of SW 1/4																			
		14		SE 1/4 of SW 1/4																			
		15																					
		16		NE 1/4 of SE 1/4																			
		17		NW 1/4 of SE 1/4																			
		18		SW 1/4 of SE 1/4																			
		19		SE 1/4 of SE 1/4																			
		20																					
												20324											

2032.4

Cass County, Minnesota, for Taxes for the Year 1955.

SOLD FOR TAXES	VALUATIONS BY SCHOOL DISTRICTS AS EQUALIZED BY DEPARTMENT OF TAXATION						Tax including State HomesteadMills	State Tax on Non- Homestead 5.17.....Mills	SPECIAL TAXES	TOTAL TAXES	PAID	WHEN PAID	Number of Receipt	March Settlement 1956	June Settlement 1956	Penalty	November Settlement 1956	Penalty	Collections to First Monday in January 1957	Penalty	Delinquent on First Monday in January 1957	Total Delinquent Tax and Penalty				
	District No.	District No.	District No.	District No.	District No.	District No.																				
	Rate.....	Rate.....	Rate.....	Rate.....	Rate.....	Rate.....																				
	Mills	Mills	Mills	Mills	Mills	Mills																				
Dollars	Dollars	Dollars	Dollars	Dollars	Dollars	\$	cts.	\$	cts.	\$	cts.	Month	Day	Year	\$	cts.	\$	cts.	\$	cts.	\$	cts.	\$	cts.	\$	cts.
1	710 District No. 152							2004	48		2052	1	PAID IN FULL	MAY 31 1956	7189		46 50									
2								2536	62		2598	2	PAID IN FULL	MAY 31 1956												
3								2068	50		2118	3	2nd Half Paid	OCT 31 1956	16272		1059		1059							
4												4	1st Half Paid	MAY 31 1956	10305											
5												5														
6								2132	52		2184	6	2nd Half Paid	OCT 31 1956	16272		1092		1092							
7								1642	40		1682	7	1st Half Paid	OCT 31 1956	10305		841		841							
8												8														
9												9														
10												10														
11												11														
12												12														
13												13														
14												14														
15												15														
16												16														
17												17														
18												18														
19												19														
20												20														

487

10382 252

10634

7642

2992

Assessment Roll and Tax List of Real Property in the Down of May,
 *Indicate Type of Property: R-Residential, C-Commercial, I-Industrial, U-Utility, F-Farm

Form SCD (55) JULY-DAY COMPANY, MINNEAPOLIS

IN WHOSE NAME ASSESSED	TO WHOM TRANSFERRED		DESCRIPTION OF PROPERTY					No. School District	Indicate Homestead Yes or No	Indicate Agricultural Yes or No	Indicate Type of Property	TRUE AND FULL VALUATIONS				ASSESSED VALUATIONS						Total Assessed Value as Equalized by the Board of Review	FINAL EQUALIZED VALUE																																																																																																																																																																																																																																																																																																																																																																																																																																																																																																																																																																																																																																																																																																																																																																																																																																																																																																																																																																																																																																																																																																																																																																																																																																													
			SUBDIVISION	Sec. or Lot	Town or Block	Rng	Number of Acres of Land					LAND Exclusive of Structures and Improvements	BUILDINGS and Other Structures	MACHINERY Permanently Attached to Real Estate	TOTAL True and Full Value	RURAL		ALL OTHER		MACHINERY Permanently Attached to Real Estate	TOTAL ASSESSED VALUE																																																																																																																																																																																																																																																																																																																																																																																																																																																																																																																																																																																																																																																																																																																																																																																																																																																																																																																																																																																																																																																																																																																																																																																																																																															
																Homestead Up to \$4,000 20%	Over \$4,000 and Non-Homestead 33 1/8%	Homestead Up to \$4,000 25%	Over \$4,000 and Non-Homestead 40%																																																																																																																																																																																																																																																																																																																																																																																																																																																																																																																																																																																																																																																																																																																																																																																																																																																																																																																																																																																																																																																																																																																																																																																																																																																	
																								Dollars	Dollars	Dollars	Dollars																																																																																																																																																																																																																																																																																																																																																																																																																																																																																																																																																																																																																																																																																																																																																																																																																																																																																																																																																																																																																																																																																																																																																																																																																																									
						Acres	100ths																																																																																																																																																																																																																																																																																																																																																																																																																																																																																																																																																																																																																																																																																																																																																																																																																																																																																																																																																																																																																																																																																																																																																																																																																																																													</

240

Cass County, Minnesota, for Taxes for the Year 1955.

SOLD FOR TAXES	VALUATIONS BY SCHOOL DISTRICTS AS EQUALIZED BY DEPARTMENT OF TAXATION						Tax including State Homestead Mills	State Tax on Non- Homestead Mills	SPECIAL TAXES	TOTAL TAXES	PAID	WHEN PAID	Number of Receipt	March Settlement 1956	June Settlement 1956	Penalty	November Settlement 1956	Penalty	Collections to First Monday in January 1957	Penalty	Delinquent on First Monday in January 1957	Total Delinquent Tax and Penalty	REMARKS
	District No.....	District No.....	District No.....	District No.....	District No.....	District No.....																	
	Rate.....	Rate.....	Rate.....	Rate.....	Rate.....	Rate.....																	
 Mills Mills Mills Mills Mills Mills																	
Dollars	Dollars	Dollars	Dollars	Dollars	Dollars	\$ cts.	\$ cts.	\$ cts.	\$ cts.	Month	Day	Year	\$ cts.	\$ cts.	\$ cts.	\$ cts.	\$ cts.	\$ cts.	\$ cts.	\$ cts.	\$ cts.	\$ cts.	
1												1											
2												2											
3												3											
4												4											
5												5											
6												6											
7	H 43						916		916			7 PAID IN FULL APR 25 1956	5604		1946	✓							
8	H 48						1024		1024			8 PAID IN FULL APR 25 1956											
9												9											
10												10											
11	H 43						916		916			11 PAID IN FULL APR 25 1956											
12	H 40						852		852			12 PAID IN FULL APR 25 1956	5604		4348	✓							
13	H 91						1514		1514			13 PAID IN FULL APR 25 1956											
14	H 50						1066		1066			14 PAID IN FULL APR 25 1956											
15												15											
16												16											
17												17											
18												18											
19												19											
20												20											
	H 295						6288		6288						6288								

Assessment Roll and Tax List of Real Property in the Down of May,
*Indicate Type of Property: R-Residential, C-Commercial, I-Industrial, U-Utility, F-Farm

TRUE AND FULL VALUATIONS										ASSESSED VALUATIONS												
IN WHOSE NAME ASSESSED	TO WHOM TRANSFERRED	DESCRIPTION OF PROPERTY				No. School District	Indicate Homestead Tax or No	Indicate Agricultural Tax or No	Indicate Type of Property	LAND Exclusive of Structures and Improvements	BUILDINGS and Other Structures	MACHINERY Permanently Attached to Real Estate	TOTAL True and Full Value	RURAL		ALL OTHER		MACHINERY Permanently Attached to Real Estate	TOTAL ASSESSED VALUE	Total Assessed Value as Equalized by the Board of Review	FINAL EQUALIZED VALUE	
		SUBDIVISION	Sec. or Lot	Town or Block	Rng									Number of Acres of Land	Homestead Up to \$4,000 20%	Over \$4,000 and Non-Homestead 33 1/3%	Homestead Up to \$4,000 25%					Over \$4,000 and Non-Homestead 40%
Agnes M. Green		1	NE 1/4 of NE 1/4	2 134 31	3960	25	Yes	Yes														
"	"	2	NW 1/4 of NE 1/4		3920		"	"														
"	"	3	SW 1/4 of NE 1/4		40		"	"														
"	"	4	SE 1/4 of NE 1/4		40		"	"														
		5																				
Geo. Horn		6	NE 1/4 of NW 1/4		3880		No	"														
State of Minnesota		7	NW 1/4 of NW 1/4 Lot 4																			
State of Minnesota		8	SW 1/4 of NW 1/4																			
Geo. Horn		9	SE 1/4 of NW 1/4		40		"	"														
		10																				
State of Minnesota		11	NE 1/4 of SW 1/4																			
State of Minnesota		12	NW 1/4 of SW 1/4																			
Leslie Horn		13	SW 1/4 of SW 1/4		40		Yes	"														
"	"	14	SE 1/4 of SW 1/4		40		"	"														
		15																				
"	"	16	NE 1/4 of SE 1/4		40		"	"														
"	"	17	NW 1/4 of SE 1/4		40		"	"														
"	"	18	SW 1/4 of SE 1/4		40		"	"														
"	"	19	SE 1/4 of SE 1/4		40		"	"														
		20																				
					47760																	

Cass County, Minnesota, for Taxes for the Year 1955.

SOLD FOR TAXES	VALUATIONS BY SCHOOL DISTRICTS AS EQUALIZED BY DEPARTMENT OF TAXATION						Tax Including State HomesteadMills	State Tax on Non- HomesteadMills	SPECIAL TAXES	TOTAL TAXES	PAID	WHEN PAID	Number of Receipt	March Settlement 1956	June Settlement 1956	Penalty	November Settlement 1956	Penalty	Collections to First Monday in January 1957	Penalty	Delinquent on First Monday in January 1957	Total Delinquent Tax and Penalty	REMARKS
	District No.	District No.	District No.	District No.	District No.	District No.																	
	Rate.....	Rate.....	Rate.....	Rate.....	Rate.....	Rate.....																	
MillsMillsMillsMillsMillsMills																	
Dollars	Dollars	Dollars	Dollars	Dollars	Dollars	\$ cts.	\$ cts.	\$ cts.	\$ cts.	Month Day Year	\$ cts.	\$ cts.	\$ cts.	\$ cts.	\$ cts.	\$ cts.	\$ cts.	\$ cts.	\$ cts.	\$ cts.	\$ cts.		
1	H 152						3240			3240	1	PAID IN FULL MAY 31 1956											
2	H 44						938			938	2	PAID IN FULL MAY 31 1956	7191		6316								
3	H 36						768			768	3	PAID IN FULL MAY 31 1956											
4	H 64						1364			1364	4	PAID IN FULL MAY 31 1956											
5											5												
6	37						788	18		806	6	PAID IN FULL MAY 31 1956	8300		806								
7											7												
8											8												
9	63						1344	32		1376	9	PAID IN FULL MAY 31 1956	8300		1376								
10											10												
11											11												
12											12												
13	H 47						1002			1002	13	PAID IN FULL MAY 31 1956	8886		1470								
14	H 22						468			468	14	PAID IN FULL MAY 31 1956											
15											15												
16	H 42						896			896	16	PAID IN FULL MAY 31 1956											
17	H 64						1364			1364	17	PAID IN FULL MAY 31 1956	8886		4584								
18	H 48						1024			1024	18	PAID IN FULL MAY 31 1956											
19	H 61						1300			1300	19	PAID IN FULL MAY 31 1956											
20	H 580										20												
	100						14496	50		14546					14546								

Assessment Roll and Tax List of Real Property in the Town of May,
 *Indicate Type of Property: R-Residential, C-Commercial, I-Industrial, U-Utility, F-Farm

[illegible]

Cass County, Minnesota, for Taxes for the Year 1955.

	SOLD FOR TAXES	VALUATIONS BY SCHOOL DISTRICTS AS EQUALIZED BY DEPARTMENT OF TAXATION						Tax including State HomesteadMills	State Tax on Non-Homestead 5.11.....Mills	SPECIAL TAXES \$ cts.	TOTAL TAXES \$ cts.	PAID	WHEN PAID Month Day Year	Number of Receipt	March Settlement 1956 \$ cts.	June Settlement 1956 \$ cts.	Penalty \$ cts.	November Settlement 1956 \$ cts.	Penalty \$ cts.	Collections to First Monday in January 1957 \$ cts.	Penalty \$ cts.	Delinquent on First Monday in January 1957 \$ cts.	Total Delinquent Tax and Penalty \$ cts.	REMARKS																																																																																																																																																																																																																																																																																																																																																																																																																																																																																																																																																																																																																																																																																																																																																																																																																																																																																																																																																																																																																																																																																																																																																																																																																																								
		District No.	District No.	District No.	District No.	District No.	District No.																																																																																																																																																																																																																																																																																																																																																																																																																																																																																																																																																																																																																																																																																																																																																																																																																																																																																																																																																																																																																																																																																																																																																																																																																																																									
		Rate.....	Rate.....	Rate.....	Rate.....	Rate.....	Rate.....																																																																																																																																																																																																																																																																																																																																																																																																																																																																																																																																																																																																																																																																																																																																																																																																																																																																																																																																																																																																																																																																																																																																																																																																																																																									
	MillsMillsMillsMillsMillsMills																																																																																																																																																																																																																																																																																																																																																																																																																																																																																																																																																																																																																																																																																																																																																																																																																																																																																																																																																																																																																																																																																																																																																																																																																																																									
		Dollars	Dollars	Dollars	Dollars	Dollars	Dollars	\$ cts.	\$ cts.	\$ cts.	\$ cts.																																																																																																																																																																																																																																																																																																																																																																																																																																																																																																																																																																																																																																																																																																																																																																																																																																																																																																																																																																																																																																																																																																																																																																																																																																																					

[illegible]

[illegible]

[illegible]

SOLD FOR TAXES	VALUATIONS BY SCHOOL DISTRICTS AS EQUALIZED BY DEPARTMENT OF TAXATION						Tax including State HomesteadMills	State Tax on Non-Homestead 5.11 Mills	SPECIAL TAXES	TOTAL TAXES	PAID	WHEN PAID	Number of Receipt	March Settlement 1956	June Settlement 1956	Penalty	November Settlement 1956	Penalty	Collections to First Monday in January 1957	Penalty	Delinquent on First Monday in January 1957	Total Delinquent Tax and Penalty
	District No.	District No.	District No.	District No.	District No.	District No.																
	Rate.....	Rate.....	Rate.....	Rate.....	Rate.....	Rate.....																
MillsMillsMillsMillsMillsMills																
Dollars	Dollars	Dollars	Dollars	Dollars	Dollars	\$ cts.	\$ cts.	\$ cts.	\$ cts.	Month	Day	Year	\$ cts.	\$ cts.	\$ cts.	\$ cts.	\$ cts.	\$ cts.	\$ cts.	\$ cts.	\$ cts.	
1					H 43		982		982	1	Balance Paid	OCT 31 1956										
2										2	Part Paid	MAY 31 1956	15679 7151		12 89		11 09					
3										3												
4					H 62		1416		1416	4	Balance Paid	OCT 31 1956										
5					H 315		7190		7190	5	2nd Half Paid	OCT 31 1956	15662 7144		35 95		35 95					
6					H 50		1142		1142	6	1st Half Paid	MAY 31 1956	7150		10 72		10 72					
7					H 44		1004		1004	7	2nd Half Paid	SEP 1 2 1956										
8										8	1st Half Paid	MAY 31 1956	13954									
9										9												
10										10												
11	SOLD FOR TAXES				H 53		1210		1210	11											1210	
12										12												
13										13												
14	SOLD FOR TAXES				88		2008	46	2054	14											2054	
15										15												
16					H 76		1734		1734	16	2nd Half Paid	OCT 31 1956										
17					H 42		958		958	17	1st Half Paid	MAY 31 1956	15679 7151		38 11		38 11					
18					H 51		1164		1164	18	2nd Half Paid	OCT 31 1956										
19					H 165		3766		3766	19	1st Half Paid	MAY 31 1956										
20					H 205		4678		4678	20	2nd Half Paid	OCT 1 7 1956	14859 8261		23 39		23 39					
					H 1106 88 1194		27252	46	27298						12107		11927				3264	

[illegible]

Wm Cooper
24 Duane

Personal

Assessment Roll and Tax List of Real Property in the Town of May,
 *Indicate Type of Property: R - Residential, C - Commercial, I - Industrial, U - Utility, F - Farm

[illegible]

Cass County, Minnesota, for Taxes for the Year 1955.

SOLD FOR TAXES	VALUATIONS BY SCHOOL DISTRICTS AS EQUALIZED BY DEPARTMENT OF TAXATION						Tax including State HomesteadMills	State Tax on Non-HomesteadMills	SPECIAL TAXES	TOTAL TAXES	PAID	WHEN PAID	Number of Receipt	March Settlement 1956	June Settlement 1956	Penalty	November Settlement 1956	Penalty	Collections to First Monday in January 1957	Penalty	Delinquent on First Monday in January 1957	Total Delinquent Tax and Penalty	REMARKS
	District No. Rate.....Mills	District No. Rate.....Mills	District No. Rate.....Mills	District No. Rate.....Mills	District No. Rate.....Mills	District No. Rate.....Mills																	
	Dollars	Dollars	Dollars	Dollars	Dollars	Dollars																	
1					88	2008	46		2054	1	2nd Half Paid	SEP 1 9 1956											
2					88	2008	46		2054	2	1st Half Paid	APR 26 1956	5614										
3					88	2008	46		2054	3	2nd Half Paid	SEP 1 9 1956											
4										4	1st Half Paid	APR 26 1956											
5										5	2nd Half Paid	SEP 1 9 1956											
6	SOLD FOR TAXES				H 80	1826			1826	6											1826		
7	SOLD FOR TAXES				H 89	2032			2032	7											2032		
8	SOLD FOR TAXES				H 66	1506			1506	8											1506		
9	SOLD FOR TAXES				H 87	1986			1986	9											1986		
10										10													
11					H 48	1096			1096	11	2nd Half Paid	OCT 3 1 1956	15677										
12					H 239	5454			5454	12	1st Half Paid	MAY 3 1 1956	8739		548						548		
13					H 81	1848			1848	13	PAID IN FULL	MAY 3 1 1956	7159		7302								
14					H 85	1940			1940	14	2nd Half Paid	OCT 3 1 1956	15677										
15										15	1st Half Paid	MAY 3 1 1956	8739		970						970		
16					H 62	1416			1416	16	2nd Half Paid	OCT 3 1 1956											
17					H 52	1186			1186	17	1st Half Paid	MAY 3 1 1956	8739		4325						4325		
18					H 52	1186			1186	18	2nd Half Paid	OCT 3 1 1956	15677										
19					H 213	4862			4862	19	1st Half Paid	MAY 3 1 1956											
20					H 1154 264 1418	32362	138		32500	20					16226						8924		7350

Assessment Roll and Tax List of Real Property in the Lower of May,
*Indicate Type of Property: R-Residential, C-Commercial, I-Industrial, U-Utility, F-Farm

Form SCD (55) MILLER-DAY'S COPYART, MINNEAPOLIS										TRUE AND FULL VALUATIONS										ASSESSED VALUATIONS									
IN WHOSE NAME ASSESSED	TO WHOM TRANSFERRED	DESCRIPTION OF PROPERTY					No. School District	Indicate Homestead Yes or No	Indicate Agricultural Yes or No	Indicate Type of Property	LAND Exclusive of Structures and Improvements	BUILDINGS and Other Structures	MACHINERY Permanently Attached to Real Estate	TOTAL True and Full Value	RURAL		ALL OTHER		MACHINERY Permanently Attached to Real Estate	TOTAL ASSESSED VALUE	Total Assessed Value as Equalized by the Board of Review	FINAL EQUALIZED VALUE							
		SUBDIVISION	Sec. or Lot	Town or Block	Rng.	Number of Acres of Land									Homestead Up to \$4,000 20%	Over \$4,000 and Non-Homestead 33 1/3%	Homestead Up to \$4,000 25%	Over \$4,000 and Non-Homestead 40%											
Acres	1000s	Dollars	Dollars	Dollars	Dollars	Dollars	Dollars	Dollars	Dollars	Dollars	Dollars	Dollars	Dollars	Dollars	Dollars	Dollars	Dollars	Dollars	Dollars	Dollars									
Archie C. Crocker		1				NE 1/4 of NE 1/4	10-12431	40	215	2000																			
Harry & Evelyn Hedger		2				NW 1/4 of NE 1/4		40	"	"																			
Albert Pitz		3				SW 1/4 of NE 1/4		40	yes	"																			
"		4				SE 1/4 of NE 1/4		40	"	"																			
		5																											
State of Minnesota		6				NE 1/4 of NW 1/4																							
State of Minnesota		7				NW 1/4 of NW 1/4																							
State of Minnesota		8				SW 1/4 of NW 1/4																							
State of Minnesota		9				SE 1/4 of NW 1/4																							
		10																											
Albert H. Pitz		11				NE 1/4 of SW 1/4		40	yes	"																			
Chester Marton		12				NW 1/4 of SW 1/4		40	yes	"																			
"		13				SW 1/4 of SW 1/4		40	"	"																			
Albert H. Pitz		14				SE 1/4 of SW 1/4		40	yes	"																			
		15																											
Ordell & Irene Pitz		16				NE 1/4 of SE 1/4		40	"	"																			
Albert H. Pitz		17				NW 1/4 of SE 1/4		40	"	"																			
"		18				SW 1/4 of SE 1/4		40	"	"																			
Ordell & Irene Pitz		19				SE 1/4 of SE 1/4		40	"	"																			
		20																											
								480																					

Cass County, Minnesota, for Taxes for the Year 1955.

SOLD FOR TAXES	VALUATIONS BY SCHOOL DISTRICTS AS EQUALIZED BY DEPARTMENT OF TAXATION						Tax Including State Homestead	State Tax on Non-Homestead	SPECIAL TAXES	TOTAL TAXES	PAID	WHEN PAID	Number of Receipt	March Settlement 1956	June Settlement 1956	Penalty	November Settlement 1956	Penalty	Collections to First Monday in January 1957	Penalty	Delinquent on First Monday in January 1957	Total Delinquent Tax and Penalty	REMARKS
	District No.	District No.	District No.	District No.	District No.	District No.																	
	Rate	Rate	Rate	Rate	Rate	Rate																	
	Dollars	Dollars	Dollars	Dollars	Dollars	Dollars																	
1	37						788	18		80'6	1st Half Paid	OCT 31 1956	15677										
2	80						1706	42		174'8	2nd Half Paid	OCT 31 1956	8739		403		403						
3	H 65						1386			1386	1st Half Paid	MAY 31 1956	15540		874		874						
4	H 76						1620			1620	2nd Half Paid	OCT 31 1956	1588		1503		1503						
5																							
6																							
7																							
8																							
9																							
10																							
11	H 56						1194			1194	2nd Half Paid	OCT 31 1956	15678		597		597						
12	80						1706	42		174'8	1st Half Paid	MAY 31 1956	7148		3974								
13	102						2174	52		222'6	PAID IN FULL	MAY 31 1956	7153										
14	H 46						1024			1024	2nd Half Paid	OCT 31 1956	15678		512		512						
15																							
16	H 80						1706			1706	2nd Half Paid	OCT 24 1956	15304		853		853						
17	H 56						1194			1194	1st Half Paid	MAY 31 1956	8969		1897		1897						
18	H 122						2600			2600	2nd Half Paid	OCT 31 1956	7198										
19	H 133						2836			2836	1st Half Paid	MAY 31 1956	15678		1418		1418						
20	H 636						19934	154		20088	2nd Half Paid	OCT 24 1956	15304		8057								
	299																						
	935																						

Assessment Roll and Tax List of Real Property in the Town of Mus,
 *Indicate Type of Property: R-Residential, C-Commercial, I-Industrial, U-Utility, F-Farm

*Indicate Type of Property: R - Residential, C - Commercial, I - Industrial, U - Utility, F - Farm

[illegible]

Cass County, Minnesota, for Taxes for the Year 1955.

	SOLD FOR TAXES	VALUATIONS BY SCHOOL DISTRICTS AS EQUALIZED BY DEPARTMENT OF TAXATION						Tax including State HomesteadMills	State Tax on Non-Homestead 5.17.....Mills	SPECIAL TAXES	TOTAL TAXES	PAID	WHEN PAID	Number of Receipt	March Settlement 1956	June Settlement 1956	Penalty	November Settlement 1956	Penalty	Collections to First Monday in January 1957	Penalty	Delinquent on First Monday in January 1957	Total Delinquent Tax and Penalty
		District No.....	District No.....	District No.....	District No.....	District No.....	District No.....																
		Rate.....	Rate.....	Rate.....	Rate.....	Rate.....	Rate.....																
	MillsMillsMillsMillsMillsMills																
		Dollars	Dollars	Dollars	Dollars	Dollars	Dollars	\$ cts.	\$ cts.	\$ cts.	\$ cts.	Month Day Year			\$ cts.	\$ cts.	\$ cts.	\$ cts.	\$ cts.	\$ cts.	\$ cts.	\$ cts.	
1	H 48							1024			1024	1	PAID IN FULL	MAY 31 1956	8886								
2		74						1578	38		1616	2	PAID IN FULL	MAY 31 1956	8332								
3		88						1876	46		1922	3	2nd Half Paid	OCT 2 1 1956	15302								
4	H 75							1598			1598	4	1st Half Paid	OCT 3 1 1956	7154			961					
5												5	2nd Half Paid	MAY 31 1956	15149			799					
6	SOLD FOR TAXES	88						1876	46		1922	6										1922	
7	SOLD FOR TAXES	98						2090	50		2140	7										2140	
8	SOLD FOR TAXES	88						1876	46		1922	8										1922	
9	SOLD FOR TAXES	88						1876	46		1922	9										1922	
10												10											
11	SOLD FOR TAXES	95						2026	50		2076	11										2076	
12	SOLD FOR TAXES	88						1876	46		1922	12										1922	
13	SOLD FOR TAXES	95						2026	50		2076	13										2076	
14	SOLD FOR TAXES	80						1706	42		1748	14										1748	
15												15											
16	H 123							2622			2622	16	2nd Half Paid	OCT 3 1 1956	15149			1311					
17		89						1898	46		1944	17	1st Half Paid	MAY 31 1956	8745								
18		157						3346	82		3428	18	2nd Half Paid	OCT 2 4 1956	7154			2686					
19	H 57							1216			1216	19	1st Half Paid	MAY 31 1956	8734								
20	N 303 1128							30510	588		31098	20	2nd Half Paid	OCT 3 1 1956	15677							15728	
																9005		6365					

Assessment Roll and Tax List of Real Property in the Down of May,
 *Indicate Type of Property: R-Residential, C-Commercial, I-Industrial, U-Utility, F-Farm

Form 5CD (55) WILSON-BAYNE COMPANY, MINNEAPOLIS

IN WHOSE NAME ASSESSED		TO WHOM TRANSFERRED	DESCRIPTION OF PROPERTY					No. School District	Indicate Homestead Yes or No	Indicate Agricultural Yes or No	Indicate Type of Property	TRUE AND FULL VALUATIONS				ASSESSED VALUATIONS						Total Assessed Value as Equalized by the Board of Review	FINAL EQUALIZED VALUE		
			SUBDIVISION	Sec. or Lot	Town or Block	Rug	Number of Acres of Land					LAND Exclusive of Structures and Improvements	BUILDINGS and Other Structures	MACHINERY Permanently Attached to Real Estate	TOTAL True and Full Value	RURAL		ALL OTHER		MACHINERY Permanently Attached to Real Estate	TOTAL ASSESSED VALUE				
																Acres	100ths	Homestead Up to \$4,000 20%	Over \$4,000 and Non-Homestead 33 1/3%					Homestead Up to \$4,000 25%	Over \$4,000 and Non-Homestead 40%
G. H. Horn			1			NE 1/4 of NE 1/4	12 134 31	40	12-15	affers ju															
" "			2			NW 1/4 of NE 1/4		40	"	"															
" "			3			SW 1/4 of NE 1/4		40	"	"															
" "			4			SE 1/4 of NE 1/4		40	"	"															
			5																						
John & Katherine Solars			6			NE 1/4 of NW 1/4		40	"	"															
" "			7			NW 1/4 of NW 1/4		40	"	"															
" "			8			SW 1/4 of NW 1/4		40	"	"															
" "			9			SE 1/4 of NW 1/4		40	"	"															
			10																						
Florence A. & Elmer F. Martin			11			NE 1/4 of SW 1/4		40	"	"															
" "			12			NW 1/4 of SW 1/4		40	"	"															
" "			13			SW 1/4 of SW 1/4		40	"	"															
" "			14			SE 1/4 of SW 1/4		40	"	"															
			15																						
Donald Ruckelshaus			16			NE 1/4 of SE 1/4		40	No	"															
" "			17			NW 1/4 of SE 1/4		40	"	"															
Rose Ruckelshaus			18			SW 1/4 of SE 1/4		40	"	"															
Donald Ruckelshaus			19			SE 1/4 of SE 1/4		40	"	"															
			20																						
								640																	

Cass County, Minnesota, for Taxes for the Year 1955.

SOLD FOR TAXES	VALUATIONS BY SCHOOL DISTRICTS AS EQUALIZED BY DEPARTMENT OF TAXATION						Tax including State Homestead	State Tax on Non-Homestead	SPECIAL TAXES	TOTAL TAXES	PAID	WHEN PAID	Number of Receipt	March Settlement 1956	June Settlement 1956	Penalty	November Settlement 1956	Penalty	Collections to First Monday in January 1957	Penalty	Delinquent on First Monday in January 1957	Total Delinquent Tax and Penalty	REMARKS
	District No.	District No.	District No.	District No.	District No.	District No.																	
	Rate	Rate	Rate	Rate	Rate	Rate																	
	Dollars	Dollars	Dollars	Dollars	Dollars	Dollars																	
1	H 58						12 36			12 36	1	PAID IN FULL MAY 31 1956			12 36								
2	H 157						33 46			33 46	2	PAID IN FULL MAY 31 1956			33 46								
3	H 65						13 86			13 86	3	PAID IN FULL MAY 31 1956			13 86								
4	H 59						12 58			12 58	4	PAID IN FULL MAY 31 1956			12 58								
5											5												
6	H 84						17 90			17 90	6	2nd Half Paid AUG 1 0 1956			8 95								
7	H 211						44 98			44 98	7	1st Half Paid MAY 31 1956			22 49			41 46					
8	H 50						10 66			10 66	8	2nd Half Paid AUG 1 0 1956			5 33								
9	H 44						9 38			9 38	9	1st Half Paid MAY 31 1956			4 69								
10											10												
11	H 40						8 52			8 52	11	2nd Half Paid OCT 1 0 1956			4 26			4 26					
12	H 62						13 22			13 22	12	1st Half Paid MAY 31 1956			6 61			6 61					
13	H 97						20 68			20 68	13	2nd Half Paid OCT 1 0 1956			10 34			10 34					
14	H 126						29 00			29 00	14	1st Half Paid MAY 31 1956			14 50			14 50					
15											15												
16	SOLD FOR TAXES 11 0						23 44	56		24 00	16										24 00		
17	SOLD FOR TAXES 9 3						19 82	48		20 30	17										20 30		
18	TRIMPTON TAXES 26 0						55 42	134		56 76	18										56 76		
19	TRIMPTON TAXES 9 1						20 68	50		21 18	19										21 18		
20	H 1063 560 16 23						34 596	288		34 884	20				149 43		77 17				122 24		

*Indicate Type of Property: R-Residential, C-Commercial, I-Industrial, U-Utility, F-Farm

IN WHOSE NAME ASSESSED		TO WHOM TRANSFERRED	DESCRIPTION OF PROPERTY							No. School District	Indicate Homestead Yes or No	Indicate Agricultural Yes or No	Indicate Type of Property	TRUE AND FULL VALUATIONS				ASSESSED VALUATIONS							FINAL EQUALIZED VALUE	
			SUBDIVISION	Sec. or Lot	Town or Block	Range	Number of Acres of Land		LAND Exclusive of Structures and Improvements					BUILDINGS and Other Structures	MACHINERY Permanently Attached to Real Estate	TOTAL True and Full Value	RURAL		ALL OTHER		MACHINERY Permanently Attached to Real Estate	TOTAL ASSESSED VALUE	Total Assessed Value as Equalized by the Board of Review			
							Acres	100ths					Dollars	Dollars	Dollars	Dollars	Homestead Up to \$1,000 20%	Over \$4,000 and Non-Homestead 33 1/3%	Homestead Up to \$4,000 25%	Over \$4,000 and Non-Homestead 40%	Dollars	Dollars	Dollars	Dollars	Dollars	Dollars
Elvora F. & Florence A. Martin			NE 1/4 of NE 1/4	13	134.31		40		24.15	No	Yes															
Donald Ruckelshaus			NW 1/4 of NE 1/4				40			"	"															
Union Central Life Ins. Co.			SW 1/4 of NE 1/4				40			"	"															
" "			SE 1/4 of NE 1/4				40			"	"															
Fred C. Reidel			NE 1/4 of NW 1/4				40		9.4	"	"															
Ferdinand Martin			NW 1/4 of NW 1/4				40			"	"															
" "			SW 1/4 of NW 1/4				40			"	"															
Fred C. Reidel			SE 1/4 of NW 1/4				40			"	"															
James B. & Shirley Aubrey			NE 1/4 of SW 1/4				40			"	"															
" "			NW 1/4 of SW 1/4				40			"	"															
" "			SW 1/4 of SW 1/4				40			"	"															
" "			SE 1/4 of SW 1/4				40			"	"															
William D. Widman			NE 1/4 of SE 1/4				40			"	"															
" "			NW 1/4 of SE 1/4				40			"	"															
Esther & Wm. D. Widman			SW 1/4 of SE 1/4				40			"	"															
" "			SE 1/4 of SE 1/4				40			"	"															

640

Cass County, Minnesota, for Taxes for the Year 1955.

SOLD FOR TAXES	VALUATIONS BY SCHOOL DISTRICTS AS EQUALIZED BY DEPARTMENT OF TAXATION						Tax including State HomesteadMills	State Tax on Non-HomesteadMills	SPECIAL TAXES	TOTAL TAXES	PAID	WHEN PAID	Number of Receipt	March Settlement 1956	June Settlement 1956	Penalty	November Settlement 1956	Penalty	Collections to First Monday in January 1957	Penalty	Delinquent on First Monday in January 1957	Total Delinquent Tax and Penalty	REMARKS
	District No. 292	District No.	District No.	District No.	District No.	District No.																	
	Rate	Rate	Rate	Rate	Rate	Rate																	
MillsMillsMillsMillsMillsMills																	
	Dollars	Dollars	Dollars	Dollars	Dollars	Dollars																	
						\$ cts.	\$ cts.	\$ cts.	\$ cts.		Month Day Year		\$ cts.	\$ cts.	\$ cts.	\$ cts.	\$ cts.	\$ cts.	\$ cts.	\$ cts.	\$ cts.	\$ cts.	
1							80	1706	42		1748	1 2nd Half Paid MAY 31 1956	14713		874		874						
2 SOLD FOR TAXES							110	2344	56		2400	2 1st Half Paid MAY 31 1956	8304								2400		24.00 added
3 SOLD FOR TAXES							110	2344	56		2400	3 1st Half Paid MAY 31 1956									2400		
4 SOLD FOR TAXES							95	2026	50		2076	4 1st Half Paid MAY 31 1956									2076		
5												5											
6	H 115						2452	2452			2452	6 PAID IN FULL MAY 31 1956	8337		2452								
7	H 196						4178	4178			4178	7 2nd Half Paid OCT 31 1956			2089		2089						
8	H 92						1962	1962			1962	8 1st Half Paid MAY 31 1956	8302		981		981						
9	H 80						1706	1706			1706	9 1st Half Paid MAY 31 1956	15797										
10												10 PAID IN FULL MAY 31 1956	8337		1706								
11	H 98						2090	2090			2090	11 2nd Half Paid OCT 2 1956											
12	H 106						2260	2260			2260	12 1st Half Paid MAY 31 1956			4104		4104						
13	H 113						2408	2408			2408	13 2nd Half Paid OCT 2 1956	7155										
14	H 68						1450	1450			1450	14 1st Half Paid MAY 31 1956	14745										
15												15 2nd Half Paid OCT 2 1956											
16	H 102						2174	2174			2174	16 1st Half Paid MAY 31 1956			1081								
17	H 55						1172	1172			1172	17 2nd Half Paid OCT 8 1956	14450		586		6022						
18	H 71						1514	1514			1514	18 1st Half Paid MAY 31 1956	8379		757								
19	H 337						7184	7184			7184	19 2nd Half Paid OCT 8 1956			3592								
20	H 1433 235 1718						36626	36626	148		36774	20 1st Half Paid MAY 31 1956			18225		14070				6876		24.00 added

Assessment Roll and Tax List of Real Property in the Down of May,
 *Indicate Type of Property: R-Residential, C-Commercial, I-Industrial, U-Utility, F-Farm

Form SCD (55) DILLON-BATH COMPANY, MINNEAPOLIS

IN WHOSE NAME ASSESSED	TO WHOM TRANSFERRED	DESCRIPTION OF PROPERTY						No. School District	Indicate Homestead Yes or No	Indicate Agricultural Yes or No	Indicate Type of Property	TRUE AND FULL VALUATIONS				ASSESSED VALUATIONS						Total Assessed Value as Equalized by the Board of Review	FINAL EQUALIZED VALUE
		SUBDIVISION	Sec. or Lot	Town or Block	Rng	Number of Acres of Land						LAND Exclusive of Structures and Improvements	BUILDINGS and Other Structures	MACHINERY Permanently Attached to Real Estate	TOTAL True and Full Value	RURAL		ALL OTHER		MACHINERY Permanently Attached to Real Estate	TOTAL ASSESSED VALUE		
						Acres	100ths									Homestead Up to \$4,000 20%	Over \$4,000 and Non-Homestead 33 1/3%	Homestead Up to \$1,000 25%	Over \$1,000 and Non-Homestead 40%				
Gerdomando Martin		1				NE 1/4 of NE 1/4	14	124	31	40	24	Yes	Yes										
"	"	2				NW 1/4 of NE 1/4				40	"	"											
Fred C. Reich		3				SW 1/4 of NE 1/4				40	"	"											
"	"	4				SE 1/4 of NE 1/4				40	"	"											
		5																					
Harley Buckwalter		6				NE 1/4 of NW 1/4				40	70	"											
"	"	7				NW 1/4 of NW 1/4				40	"	"											
"	"	8				SW 1/4 of NW 1/4				40	"	"											
"	"	9				SE 1/4 of NW 1/4				40	"	"											
		10																					
Paul M. & Mabel R. Crocker		11				NE 1/4 of SW 1/4				40	Yes	"											
"	"	12				NW 1/4 of SW 1/4				40	"	"											
"	"	13				SW 1/4 of SW 1/4				40	"	"											
Otto A. & Harriet Kober		14				SE 1/4 of SW 1/4				40	"	"											
		15																					
Raymond C. Blomstrom		16				NE 1/4 of SE 1/4				40	"	"											
"	"	17				NW 1/4 of SE 1/4				40	"	"											
"	"	18				SW 1/4 of SE 1/4				40	"	"											
"	"	19				SE 1/4 of SE 1/4				40	"	"											
		20																					

640

Cass County, Minnesota, for Taxes for the Year 1955.

SOLD FOR TAXES	VALUATIONS BY SCHOOL DISTRICTS AS EQUALIZED BY DEPARTMENT OF TAXATION						Tax including State Homestead	State Tax on Non-Homestead	SPECIAL TAXES	TOTAL TAXES	PAID	WHEN PAID	Number of Receipt	March Settlement 1956	June Settlement 1956	Penalty	November Settlement 1956	Penalty	Collections to First Monday in January 1957	Penalty	Delinquent on First Monday in January 1957	Total Delinquent Tax and Penalty	REMARKS
	District No.	District No.	District No.	District No.	District No.	District No.																	
	Rate	Rate	Rate	Rate	Rate	Rate																	
	Dollars	Dollars	Dollars	Dollars	Dollars	Dollars	\$ cts.	\$ cts.	\$ cts.	\$ cts.		Month Day Year		\$ cts.	\$ cts.	\$ cts.	\$ cts.	\$ cts.	\$ cts.	\$ cts.	\$ cts.	\$ cts.	
1	H 53						11 30			11 30		2nd Half Paid OCT 31 1956											
2	H 64						13 64			13 64		2nd Half Paid OCT 31 1956											
3	H 80						17 06			17 06		2nd Half Paid OCT 31 1956											
4	H 80						17 06			17 06		2nd Half Paid OCT 31 1956											
5																							
6	SOLD FOR TAXES	137					29 20	70		29 90		2nd Half Paid OCT 31 1956											
7	SOLD FOR TAXES	80					17 06	42		17 48		2nd Half Paid OCT 31 1956											
8	SOLD FOR TAXES	160					34 10	82		34 92		2nd Half Paid OCT 31 1956											
9	SOLD FOR TAXES	163					34 74	84		35 58		2nd Half Paid OCT 31 1956											
10																							
11	H 81						17 26			17 26		2nd Half Paid OCT 31 1956											
12	H 153						32 62			32 62		2nd Half Paid OCT 31 1956											
13	H 65						13 86			13 86		2nd Half Paid OCT 31 1956											
14	H 48						10 24			10 24		2nd Half Paid OCT 31 1956											
15																							
16	H 92						19 62			19 62		2nd Half Paid OCT 31 1956											
17	H 53						11 30			11 30		2nd Half Paid OCT 31 1956											
18	H 165						35 18			35 18		2nd Half Paid OCT 31 1956											
19	H 200						42 64			42 64		2nd Half Paid OCT 31 1956											
20																							

356 88

2 18

359 66

137 95

103 83

117 08

Assessment Roll and Tax List of Real Property in the Town of May,
 *Indicate Type of Property: R-Residential, C-Commercial, I-Industrial, U-Utility, F-Farm

Form SCD (55) MILLER-BATH COMPANY, MINNEAPOLIS

TRUE AND FULL VALUATIONS												ASSESSED VALUATIONS							Total Assessed Value as Equalized by the Board of Review	FINAL EQUALIZED VALUE
LAND Exclusive of Structures and Improvements	BUILDINGS and Other Structures	MACHINERY Permanently Attached to Real Estate	TOTAL True and Full Value	RURAL		ALL OTHER		MACHINERY Permanently Attached to Real Estate	TOTAL ASSESSED VALUE											
				Homestead Up to \$4,000 20%	Over \$4,000 and Non-Homestead 33 1/3 %	Homestead Up to \$4,000 25%	Over \$4,000 and Non-Homestead 40%													
Dollars	Dollars	Dollars	Dollars	Dollars	Dollars	Dollars	Dollars	Dollars	Dollars	Dollars	Dollars									
									</											

Cass County, Minnesota, for Taxes for the Year 1955.

SOLD FOR TAXES	VALUATIONS BY SCHOOL DISTRICTS AS EQUALIZED BY DEPARTMENT OF TAXATION						Tax including State Homestead	State Tax on Non-Homestead	SPECIAL TAXES	TOTAL TAXES	PAID	WHEN PAID	Number of Receipt	March Settlement 1956	June Settlement 1956	Penalty	November Settlement 1956	Penalty	Collections to First Monday in January 1957	Penalty	Delinquent on First Monday in January 1957	Total Delinquent Tax and Penalty	REMARKS
	District No.	District No.	District No.	District No.	District No.	District No.																	
	Rate	Rate	Rate	Rate	Rate	Rate																	
1	48						1024			1024		2nd Half Paid OCT 24 1956											
2	45						960			960		1st Half Paid MAY 31 1956	8769		512		512						
3	48						1024			1024		2nd Half Paid OCT 24 1956	15304		480		480				1024		
4	92						1960	48		2010		1st Half Paid MAY 31 1956									2010		
5																							
6	77						1642			1642		6 PAID IN FULL OCT 31 1956											
7	121						2580			2580		7 PAID IN FULL OCT 31 1956								6844	240		
8	69						1470			1470		8 PAID IN FULL OCT 31 1956	15163										
9	54						1152			1152		9 PAID IN FULL OCT 31 1956											
10																							
11	56						1194			1194		11 PAID IN FULL MAY 31 1956											
12	217						4626			4626		12 PAID IN FULL MAY 31 1956	7153		10296								
13	100						2132			2132		13 PAID IN FULL MAY 31 1956											
14	110						2344			2344		14 PAID IN FULL MAY 31 1956											
15																							
16	88						1876			1876		2nd Half Paid OCT 31 1956											
17	48						1024			1024		1st Half Paid MAY 31 1956	7157		3955		3955						
18	142						3028			3028		2nd Half Paid OCT 31 1956	16246										
19	92						1982			1982		1st Half Paid MAY 31 1956											
20	1316						30020	48		30068					15243		11791				3034		

Assessment Roll and Tax List of Real Property in the Town of May,
 *Indicate Type of Property: R-Residential, C-Commercial, I-Industrial, U-Utility, F-Farm

Form SCD (55) MILLER-DAVIS COMPANY, MINNEAPOLIS

IN WHOSE NAME ASSESSED	TO WHOM TRANSFERRED	DESCRIPTION OF PROPERTY						No. School District	Indicate Homestead Yes or No	Indicate Agricultural Tax or No	Indicate Type of Property	TRUE AND FULL VALUATIONS				ASSESSED VALUATIONS							FINAL EQUALIZED VALUE
		SUBDIVISION	Sec. or Lot	Town or Block	Rng.	Number of Acres of Land						LAND Exclusive of Structures and Improvements	BUILDINGS and Other Structures	MACHINERY Permanently Attached to Real Estate	TOTAL True and Full Value	RURAL		ALL OTHER		MACHINERY Permanently Attached to Real Estate	TOTAL ASSESSED VALUE	Total Assessed Value as Equalized by the Board of Review	
						Acres	100ths									Homestead Up to \$1,000 20%	Over \$4,000 and Non-Homestead 33 1/8 %	Homestead Up to \$1,000 25%	Over \$4,000 and Non-Homestead 40%				
												Dollars	Dollars	Dollars	Dollars	Dollars	Dollars	Dollars	Dollars	Dollars	Dollars	Dollars	Dollars
John L. Martin		1	NE ¼ of NE ¼	16	134	31	40	27	No	yes													
State of Minnesota		2	NW ¼ of NE ¼																				
State of Minnesota		3	SW ¼ of NE ¼																				
Chester Martin		4	SE ¼ of NE ¼				40	yes	"														
		5																					
Lester Burns		6	NE ¼ of NW ¼				40	No	"														
" "		7	NW ¼ of NW ¼				40	"	"														
" "		8	SW ¼ of NW ¼				40	"	"														
" "		9	SE ¼ of NW ¼				40	"	"														
		10																					
" "		11	NE ¼ of SW ¼				40	"	"														
" "		12	NW ¼ of SW ¼				40	"	"														
" "		13	SW ¼ of SW ¼				40	"	"														
" "		14	SE ¼ of SW ¼				40	"	"														
		15																					
Chester Martin		16	NE ¼ of SE ¼				40	yes	"														
State of Minnesota		17	NW ¼ of SE ¼																				
Chester Martin		18	SW ¼ of SE ¼				40	"	"														
" "		19	SE ¼ of SE ¼				40	"	"														
		20																					
														</									

Cass County, Minnesota, for Taxes for the Year 1955.

	SOLD FOR TAXES	VALUATIONS BY SCHOOL DISTRICTS AS EQUALIZED BY DEPARTMENT OF TAXATION						Tax including State HomesteadMills	State Tax on Non-Homestead <u>5.17</u> Mills	SPECIAL TAXES	TOTAL TAXES	PAID	WHEN PAID	Number of Receipt	March Settlement 1956	June Settlement 1956	Penalty	November Settlement 1956	Penalty	Collections to First Monday in January 1957	Penalty	Delinquent on First Monday in January 1957	Total Delinquent Tax and Penalty	REMARKS
		District No. Rate Mills	District No. Rate Mills	District No. Rate Mills	District No. Rate Mills	District No. Rate Mills	District No. Rate Mills																	
		Dollars	Dollars	Dollars	Dollars	Dollars	Dollars																	
1						93	2122	48			2170	1											2170	
2												2												
3												3												
4					H	43	982				982	4	PAID IN FULL MAY 31 1956	7153		982								
5												5												
6						93	2122	48			2170	6	PAID IN FULL OCT 31 1956											
7						148	3378	76			3454	7	PAID IN FULL OCT 31 1956											
8						77	1758	40			1798	8	PAID IN FULL OCT 31 1956											
9						186	4246	96			4342	9	PAID IN FULL OCT 31 1956	15676										
10												10							21542	754				
11						120	2738	62			2800	11	PAID IN FULL OCT 31 1956											
12						93	2122	48			2170	12	PAID IN FULL OCT 31 1956											
13						96	2192	50			2242	13	PAID IN FULL OCT 31 1956											
14						110	2510	56			2566	14	PAID IN FULL OCT 31 1956											
15												15												
16					H	121	2762				2762	16	PAID IN FULL MAY 31 1956			2762								
17												17		7153										
18					H	52	1186				1186	18	PAID IN FULL MAY 31 1956			1186								
19					H	55	1256				1256	19	PAID IN FULL MAY 31 1956			1256								
20												20												
					H	271	29374	524			29848					6186		21542					2170	

Assessment Roll and Tax List of Real Property in the Town of May

*Indicate Type of Property: R-Residential, C-Commercial, I-Industrial, U-Utility, F-Farm

Form SCD (55) MILLER-DAY COMPANY, MINNEAPOLIS

IN WHOSE NAME ASSESSED	TO WHOM TRANSFERRED	DESCRIPTION OF PROPERTY						No. School District	Indicate Homestead Yes or No	Indicate Agricultural Yes or No	Indicate Type of Property	TRUE AND FULL VALUATIONS				ASSESSED VALUATIONS							FINAL EQUALIZE VALUE	
		SUBDIVISION	Sec. or Lot	Town or Block	Rng	Number of Acres of Land						LAND Exclusive of Structures and Improvements	BUILDINGS and Other Structures	MACHINERY Permanently Attached to Real Estate	TOTAL True and Full Value	RURAL		ALL OTHER		MACHINERY Permanently Attached to Real Estate	TOTAL ASSESSED VALUE	Total Assessed Value as Equalized by the Board of Review		
						Acres	100ths									Homestead Up to \$4,000 20%	Over \$4,000 and Non-Homestead 33 1/3%	Homestead Up to \$4,000 25%	Over \$4,000 and Non-Homestead 40%					
																								Dollars
Carl A. & Alice B. Lorber		1				NE 1/4 of NE 1/4	17	134	31	40	37	yes	yes											
W.E. Pierce		2				NW 1/4 of NE 1/4				40	70	"	"											
"	"	3				SW 1/4 of NE 1/4				40	"	"	"											
State of Minnesota		4				SE 1/4 of NE 1/4																		
		5																						
State of Minnesota		6				NE 1/4 of NW 1/4																		
State of Minnesota		7				NW 1/4 of NW 1/4																		
State of Minnesota		8				SW 1/4 of NW 1/4																		
State of Minnesota		9				SE 1/4 of NW 1/4																		
		10																						
State of Minnesota		11				NE 1/4 of SW 1/4																		
State of Minnesota		12				NW 1/4 of SW 1/4																		
State of Minnesota		13				SW 1/4 of SW 1/4																		
Harvey & Marie Schmalz		14				SE 1/4 of SW 1/4				40	yes	"	"											
		15																						
George A. & Grace Oppelsheimer		16				NE 1/4 of SE 1/4				40	yes	"	"											
"	"	17				NW 1/4 of SE 1/4				40	"	"	"											
"	"	18				SW 1/4 of SE 1/4				40	"	"	"											
"	"	19				SE 1/4 of SE 1/4				40	"	"	"											
		20																						
									320															

Cass County, Minnesota, for Taxes for the Year 1955.

SOLD FOR TAXES	VALUATIONS BY SCHOOL DISTRICTS AS EQUALIZED BY DEPARTMENT OF TAXATION						Tax including State Homestead	State Tax on Non- Homestead	SPECIAL TAXES	TOTAL TAXES	PAID	WHEN PAID	Number of Receipt	March Settlement 1956	June Settlement 1956	Penalty	November Settlement 1956	Penalty	Collections to First Monday in January 1957	Penalty	Delinquent on First Monday in January 1957	Total Delinquent Tax and Penalty	REMARKS
	District No.	District No.	District No.	District No.	District No.	District No.																	
	Rate.....	Rate.....	Rate.....	Rate.....	Rate.....	Rate.....																	
MillsMillsMillsMillsMillsMills																	
Dollars	Dollars	Dollars	Dollars	Dollars	Dollars	\$ cts.	\$ cts.	\$ cts.	\$ cts.	Month	Day	Year	\$ cts.	\$ cts.	\$ cts.	\$ cts.	\$ cts.	\$ cts.	\$ cts.	\$ cts.	\$ cts.		
1				H	57	1300			1300	1	PAID IN FULL	MAY 31	1956	7159		1300							
2					93	2122	48		2170	2											2170		
3					90	2054	46		2100	3											2100		
4										4													
5										5													
6										6													
7										7													
8										8													
9										9													
10										10													
11										11													
12										12													
13										13													
14				H	72	1644			1644	14	PAID IN FULL	MAY 31	1956	7160		1644							
15										15													
16				H	69	1574			1574	16	2nd Half Paid	OCT 31	1956			787							
17				H	48	1096			1096	17	1st Half Paid	MAY 31	1956	15150		548		3789					
18				H	48	1096			1096	18	2nd Half Paid	OCT 31	1956	8335		548							
19				H	167	3812			3812	19	1st Half Paid	MAY 31	1956			1906							
20				H	461	14698	94		14792	20						6733		3789			4270		
					183																		
					644																		

[illegible]

Assessment Roll and Tax List of Real Property in the Down of May,
 *Indicate Type of Property: R-Residential, C-Commercial, I-Industrial, U-Utility, F-Farm

Form SCD (55) JULY-1954 EDITION, MINNAPOLIS

IN WHOSE NAME ASSESSED	TO WHOM TRANSFERRED	DESCRIPTION OF PROPERTY					No. School District	Indicate Homestead Yes or No	Indicate Agricultural Yes or No	* Indicate Type of Property	TRUE AND FULL VALUATIONS				ASSESSED VALUATIONS							FINAL EQUALIZE VALUE
		SUBDIVISION	Sec. or Lot	Town or Block	Rng	Number of Acres of Land					LAND Exclusive of Structures and Improvements	BUILDINGS and Other Structures	MACHINERY Permanently Attached to Real Estate	TOTAL True and Full Value	RURAL		ALL OTHER		MACHINERY Permanently Attached to Real Estate	TOTAL ASSESSED VALUE	Total Assessed Value as Equalized by the Board of Review	
															Homestead Up to \$4,000 20%	Over \$4,000 and Non-Homestead 33 1/3 %	Homestead Up to \$4,000 25%	Over \$4,000 and Non-Homestead 40%				
						Acres	100ths				Dollars	Dollars	Dollars	Dollars	Dollars	Dollars	Dollars	Dollars	Dollars	Dollars		
Harry J. Esther M. Arthur & Clara Haran	1	NE 1/4 of NE 1/4	19	134	31	40		627	yes	yes												
"	"	"	"	"	"	40		"	"													
"	"	"	"	"	"	40		"	"													
"	"	"	"	"	"	40		"	"													
	5																					
Guy R. Drwin	6	Lots 3-4-5-6 NE 1/4 of NW 1/4				144	88	10	"													
Myrton & Claire F. Esler	7	NW 1/4 of NW 1/4 Lot 1				40		"	"													
"	8	SW 1/4 of NW 1/4 Lot 2				40		"	"													
Palmer L. L. L.	9	SE 1/4 of NW 1/4 Lot 7				40		"	"													
Myrton & Claire F. Esler	10	Lot 8				40		"	"													
Reynold St. A. & Eloise H. Krupke	11	Lots 11-12-13-14 NE 1/4 of SW 1/4				149	88	yes	"													
"	12	NW 1/4 of SW 1/4 Lot 9				40		"	"													
"	13	SW 1/4 of SW 1/4 Lot 10				40		"	"													
"	14	Lot 15 less 1 ac. to church SE 1/4 of SW 1/4				39		"	"													
"	15	Lot 16				40		"	"													
State of Minnesota	16	NE 1/4 of SE 1/4																				
State of Minnesota	17	NW 1/4 of SE 1/4																				
State of Minnesota	18	SW 1/4 of SE 1/4																				
State of Minnesota	19	SE 1/4 of SE 1/4																				
	20																					
		773 76																				

Cass County, Minnesota, for Taxes for the Year 1955.

SOLD FOR TAXES	VALUATIONS BY SCHOOL DISTRICTS AS EQUALIZED BY DEPARTMENT OF TAXATION						Tax including State Homestead	State Tax on Non-Homestead	SPECIAL TAXES	TOTAL TAXES	PAID	WHEN PAID	Number of Receipt	March Settlement 1956	June Settlement 1956	Penalty	November Settlement 1956	Penalty	Collections to First Monday in January 1957	Penalty	Delinquent on First Monday in January 1957	Total Delinquent Tax and Penalty	REMARKS
	District No.	District No.	District No.	District No.	District No.	District No.																	
	Rate	Rate	Rate	Rate	Rate	Rate																	
	Mills	Mills	Mills	Mills	Mills	Mills																	
1					H 171		39 02			39 02		2nd Half Paid OCT 31 1956											
2					H 100		22 82			22 82		2nd Half Paid OCT 31 1956											
3					H 64		14 60			14 60		2nd Half Paid OCT 31 1956											
4					H 48		10 96			10 96		2nd Half Paid OCT 31 1956											
5																							
6					H 298		68 02			68 02		PAID IN FULL MAR 19 1956	4656		68 02								
7					206		47 02	1 06		48 08													4808 52 89
8					127		28 98	66		29 64													2964 32 60
9					80		18 26	42		18 68													1868 20 55
10					125		28 54	64		29 18													2918 32 10
11					H 433		98 82			98 82		2nd Half Paid OCT 31 1956											
12					H 38		86 8			86 8		2nd Half Paid OCT 31 1956											
13					H 66		15 06			15 06		2nd Half Paid OCT 31 1956											
14					H 47		10 72			10 72		2nd Half Paid OCT 31 1956											
15					H 59		13 46			13 46		2nd Half Paid OCT 31 1956											
16																							
17																							
18																							
19																							
20																							
		H 1324 535 1862		42496		278		42774						18509		11767				12558			

[illegible]

Assessment Roll and Tax List of Real Property in the Down of May, *Indicate Type of Property: R-Residential, C-Commercial, I-Industrial, U-Utility, F-Farm

Form 500 (55) - 1955

IN WHOSE NAME ASSESSED	TO WHOM TRANSFERRED	DESCRIPTION OF PROPERTY					No. School District	Indicate Homestead Yes or No	Indicate Agricultural Yes or No	Indicate Type of Property	TRUE AND FULL VALUATIONS				ASSESSED VALUATIONS						Total Assessed Value as Equalized by the Board of Review	FINAL EQUALIZED VALUE
		SUBDIVISION	Sec. or Lot	Town or Block	Rng	Number of Acres of Land					LAND Exclusive of Structures and Improvements	BUILDINGS and Other Structures	MACHINERY Permanently Attached to Real Estate	TOTAL True and Full Value	RURAL		ALL OTHER		MACHINERY Permanently Attached to Real Estate	TOTAL ASSESSED VALUE		
															Homestead Up to \$4,000 20%	Over \$4,000 and Non-Homestead 33 1/3%	Homestead Up to \$4,000 25%	Over \$4,000 and Non-Homestead 40%				
Chair L. Hammels		1		NE 1/4 of NE 1/4	21	134	31	40	637	No	yes			Homesteaded for 1923	abatement -							123
" "		2		NW 1/4 of NE 1/4				40	"	"				"								68
Emma Anderson		3		SW 1/4 of NE 1/4				40	yes	"												
" "		4		SE 1/4 of NE 1/4				40	"	"												
		5																				
State of Minnesota		6		NE 1/4 of NW 1/4																		
State of Minnesota		7		NW 1/4 of NW 1/4																		
State of Minnesota		8		SW 1/4 of NW 1/4																		
State of Minnesota		9		SE 1/4 of NW 1/4																		
		10																				
Henry & Ulla Pietz		11		NE 1/4 of SW 1/4				40	710	"				Homesteaded 1955 by Town Board								53
" "		12		NW 1/4 of SW 1/4				40	"	"				"								53
Lyman & Nellie C. Heyre		13		SW 1/4 of SW 1/4				40	yes	"												
Henry Pietz		14		SE 1/4 of SW 1/4				40	"	"				Homesteaded 1955 by Town Board								60
		15																				
August Schmalz		16		NE 1/4 of SE 1/4				40	"	"												
" "		17		NW 1/4 of SE 1/4				40	"	"												
Raymond F. & Elgia Anderson		18		SW 1/4 of SE 1/4				40	"	"												
Lester L. Newkirk		19		SE 1/4 of SE 1/4 less 24.65 acs of S 25.3 acs of S 1/4 of S 1/4				40	No	"												
Town of May		20		24.65 acs of S 25.3 acs of S 1/4 of S 1/4				40	Exempt													

Cass County, Minnesota, for Taxes for the Year 1955.

SOLD FOR TAXES	VALUATIONS BY SCHOOL DISTRICTS AS EQUALIZED BY DEPARTMENT OF TAXATION						Tax Including State HomesteadMills	State Tax on Non-Homestead 5.11 Mills	SPECIAL TAXES	TOTAL TAXES	PAID	WHEN PAID	Number of Receipt	March Settlement 1956	June Settlement 1956	Penalty	November Settlement 1956	Penalty	Collections to First Monday in January 1957	Penalty	Delinquent on First Monday in January 1957	Total Delinquent Tax and Penalty	REMARKS
	District No.	District No.	District No.	District No.	District No.	District No.																	
	Rate.....	Rate.....	Rate.....	Rate.....	Rate.....	Rate.....																	
MillsMillsMillsMillsMillsMills																	
Dollars	Dollars	Dollars	Dollars	Dollars	Dollars	\$ cts.	\$ cts.	\$ cts.	\$ cts.	Month	Day	Year	\$ cts.	\$ cts.	\$ cts.	\$ cts.	\$ cts.	\$ cts.	\$ cts.	\$ cts.	\$ cts.		
1				H 123		2808			2808	1	PAID IN FULL	MAY 31 1956		2808									
2				H 68		1552			1552	2	PAID IN FULL	MAY 31 1956	10482	1552									
3				H 191		4360			4360	3	1st Half Paid	MAY 31 1956		2180		2180							
4				H 109		2488			2488	4	2nd Half Paid	OCT 31 1956	8336	1244		1244							
5										5	1st Half Paid	MAY 31 1956	15714										
6										6													
7										7													
8										8													
9										9													
10										10													
11	SOLD FOR TAXES			H 53		1210			1210	11											1210		
12	SOLD FOR TAXES			H 53		1210			1210	12											1210		
13				H 34		776			776	13											776	854	
14				H 60		1370			1370	14	PAID IN FULL	MAY 31 1956	7147	1370									
15										15													
16				H 170		3880			3880	16	PAID IN FULL	MAY 31 1956	7160	5318									
17				H 63		1438			1438	17	PAID IN FULL	MAY 31 1956											
18				H 57		1300			1300	18	PAID IN FULL	MAY 31 1956	8258	1300									
19	SOLD FOR TAXES			112		3926	88		4014	19											4014		
20				H 981		26318	88		26406	20				15772	3424						7210		
				172																			
				1153																			

[illegible]

Cass County, Minnesota, for Taxes for the Year 1955.

Assessment Roll and Tax List of Real Property in the Down of May,
*Indicate Type of Property: R-Residential, C-Commercial, I-Industrial, U-Utility, F-Farm

Form SCD (55) MILLER-BAYL COMPANY, MINNEAPOLIS

IN WHOSE NAME ASSESSED	TO WHOM TRANSFERRED	DESCRIPTION OF PROPERTY						No. School District	Indicate Homestead Yes or No	Indicate Agricultural Yes or No	Indicate Type of Property	TRUE AND FULL VALUATIONS				ASSESSED VALUATIONS						Total Assessed Value as Equalized by the Board of Review	FINAL EQUALIZED VALUE
		SUBDIVISION	Sec. or Lot	Town or Block	Rng	Number of Acres of Land	LAND Exclusive of Structures and Improvements					BUILDINGS and Other Structures	MACHINERY Permanently Attached to Real Estate	TOTAL True and Full Value	RURAL		ALL OTHER		MACHINERY Permanently Attached to Real Estate	TOTAL ASSESSED VALUE			
															Homestead Up to \$4,000 20%	Over \$4,000 and Non-Homestead 33 1/3%	Homestead Up to \$4,000 25%	Over \$4,000 and Non-Homestead 40%					
															Dollars	Dollars	Dollars	Dollars			Dollars		
Ferdinand Martin & Edwin F. Martin		1	NE 1/4 of NE 1/4	24	134	31	40	24-15-12	Yes	Yes													
"	"	2	NW 1/4 of NE 1/4				40	"	"														
"	"	3	SW 1/4 of NE 1/4				40	"	"														
"	"	4	SE 1/4 of NE 1/4				40	"	"														
		5																					
James B. & Shirley Aubrey		6	NE 1/4 of NW 1/4				40	"	"														
"	"	7	NW 1/4 of NW 1/4				40	"	"														
"	"	8	SW 1/4 of NW 1/4				40	"	"														
"	"	9	SE 1/4 of NW 1/4				40	"	"														
		10																					
D. P. Rudbeck		11	NE 1/4 of SW 1/4				40	"	"														
Roy Aubrey		12	NW 1/4 of SW 1/4				40	"	"														
"	"	13	SW 1/4 of SW 1/4				40	"	"														
"	"	14	SE 1/4 of SW 1/4				40	"	"														
State of Minnesota		15	10 x 16 rods of NE 1/4 of SE 1/4																				
Carl J. & Bertha H. Vaughn		16	NE 1/4 of SE 1/4 less 10 x 16 rods				39	"	"														
"	"	17	NW 1/4 of SE 1/4				40	"	"														
"	"	18	SW 1/4 of SE 1/4				40	"	"														
"	"	19	SE 1/4 of SE 1/4 less 12 x 14 rods				39	"	"														
		20																					

632

Cass County, Minnesota, for Taxes for the Year 1955.

SOLD FOR TAXES	VALUATIONS BY SCHOOL DISTRICTS AS EQUALIZED BY DEPARTMENT OF TAXATION						Tax including State HomesteadMills	State Tax on Non- HomesteadMills	SPECIAL TAXES	TOTAL TAXES	PAID	WHEN PAID	Number of Receipt	March Settlement 1956	June Settlement 1956	Penalty	November Settlement 1956	Penalty	Collections to First Monday in January 1957	Penalty	Delinquent on First Monday in January 1957	Total Delinquent Tax and Penalty	REMARKS
	District	District	District	District	District	District																	
	No.....	No.....	No.....	No.....	No.....	No.....																	
	Rate.....	Rate.....	Rate.....	Rate.....	Rate.....	Rate.....																	
273.78	Mills	Mills	Mills	Mills	Mills	Mills																	
Dollars	Dollars	Dollars	Dollars	Dollars	Dollars	Dollars	\$ cts.	\$ cts.	\$ cts.	\$ cts.		Month Day Year	\$ cts.	\$ cts.	\$ cts.	\$ cts.	\$ cts.	\$ cts.	\$ cts.	\$ cts.	\$ cts.	\$ cts.	
1	H 140						2984			2984	1	2nd Half Paid OCT 3 1 1956											
2	H 53						1130			1130	2	1st Half Paid MAY 3 1 1956	15797		1492		1492						
3	H 53						1130			1130	3	2nd Half Paid OCT 3 1 1956	18302		565		565						
4	H 85						1812			1812	4	1st Half Paid MAY 3 1 1956			565		565						
5											5	2nd Half Paid OCT 3 1 1956			906		906						
6	H 181						3858			3858	6	1st Half Paid MAY 3 1 1956											
7	H 94						2004		4	2004	7	Balance Paid OCT 2 2 1956	7155		4396		4388						
8	H 29						1898			1898	8	Part Paid MAY 3 1 1956	14795										
9	H 48						1024			1024	9	Balance Paid OCT 2 2 1956											
10											10	Part Paid MAY 3 1 1956											
11	H 107						2282			2282	11	PAID IN FULL MAY 3 1 1956											
12	H 105						2238			2238	12	PAID IN FULL MAY 3 1 1956	7162		10702								
13	H 203						4328			4328	13	PAID IN FULL MAY 3 1 1956											
14	H 81						1854			1854	14	PAID IN FULL MAY 3 1 1956											
15											15												
16	H 57						1216			1216	16	PAID IN FULL MAY 3 1 1956											
17	H 53						1130			1130	17	PAID IN FULL MAY 3 1 1956	8723		8338								
18	H 86						1834			1834	18	PAID IN FULL MAY 3 1 1956											
19	H 195						4158			4158	19	PAID IN FULL MAY 3 1 1956											
20											20												
	H 1636						34880			34880					26944		7916						

Assessment Roll and Tax List of Real Property in the Down of May,
 *Indicate Type of Property: R-Residential, C-Commercial, I-Industrial, U-Utility, F-Farm

Form 500 (55) JULY-1954 EDITION, MINNEAPOLIS

IN WHOSE NAME ASSESSED	TO WHOM TRANSFERRED	DESCRIPTION OF PROPERTY					No. School District	Indicate Homestead Yes or No	Indicate Agricultural Yes or No	Indicate Type of Property	TRUE AND FULL VALUATIONS				ASSESSED VALUATIONS						Total Assessed Value as Equalized by the Board of Review	FINAL EQUALIZE VALUE
		SUBDIVISION	Sec. or Lot	Town or Block	Rng	Number of Acres of Land					LAND Exclusive of Structures and Improvements	BUILDINGS and Other Structures	MACHINERY Permanently Attached to Real Estate	TOTAL True and Full Value	RURAL		ALL OTHER		MACHINERY Permanently Attached to Real Estate	TOTAL ASSESSED VALUE		
															Homestead Up to \$4,000 20%	Over \$4,000 and Non-Homestead 33 1/3%	Homestead Up to \$4,000 25%	Over \$4,000 and Non-Homestead 40%				
						Acres	100ths				Dollars	Dollars	Dollars	Dollars	Dollars	Dollars	Dollars	Dollars	Dollars	Dollars	Dollars	
Claude L. & Ethel E. Vinson		1	NE 1/4 of NE 1/4	25	134	31	40	25	Yes	Yes												
"	"	2	NW 1/4 of NE 1/4				40		"	"												
"	"	3	SW 1/4 of NE 1/4				40		"	"												
"	"	4	SE 1/4 of NE 1/4				40		"	"												
		5																				
Clifford J. & Roger Griffith		6	NE 1/4 of NW 1/4				40		"	"												
"	"	7	NW 1/4 of NW 1/4				40		"	"												
"	"	8	SW 1/4 of NW 1/4				40		"	"												
"	"	9	SE 1/4 of NW 1/4				40		"	"												
		10																				
John & Charlotte Krueger		11	NE 1/4 of SW 1/4				40		"	"												
"	"	12	NW 1/4 of SW 1/4				40		"	"												
"	"	13	SW 1/4 of SW 1/4				40		"	"												
"	"	14	SE 1/4 of SW 1/4				40		"	"												
		15																				
Lawrence L. & Emma V. Hix		16	NE 1/4 of SE 1/4				40		"	"												
Raymond A. & Carl Kortman		17	NW 1/4 of SE 1/4				40		"	"												
"	"	18	SW 1/4 of SE 1/4				40		"	"												
"	"	19	SE 1/4 of SE 1/4				40		"	"												
		20																				

Cass County, Minnesota, for Taxes for the Year 1955.

SOLD FOR TAXES	VALUATIONS BY SCHOOL DISTRICTS AS EQUALIZED BY DEPARTMENT OF TAXATION						Tax including State HomesteadMills	State Tax on Non- HomesteadMills	SPECIAL TAXES	TOTAL TAXES	PAID	WHEN PAID	Number of Receipt	March Settlement 1956	June Settlement 1956	Penalty	November Settlement 1956	Penalty	Collections to First Monday in January 1957	Penalty	Delinquent on First Monday in January 1957	Total Delinquent Tax and Penalty	REMARKS
	District	District	District	District	District	District																	
	No.....	No.....	No.....	No.....	No.....	No.....																	
	Rate.....	Rate.....	Rate.....	Rate.....	Rate.....	Rate.....																	
273 Mills																							
Dollars	Dollars	Dollars	Dollars	Dollars	Dollars	\$ cts.	\$ cts.	\$ cts.	\$ cts.	Month	Day	Year	\$ cts.	\$ cts.	\$ cts.	\$ cts.	\$ cts.	\$ cts.	\$ cts.	\$ cts.	\$ cts.	\$ cts.	
1	H	44					938		938	1	PAID IN FULL	APR 27 1956											
2	H	187					3986		3986	2	PAID IN FULL	APR 27 1956	5874		8102								
3	H	107					2282		2282	3	PAID IN FULL	APR 27 1956											
4	H	42					896		896	4	PAID IN FULL	APR 27 1956											
5										5													
6	H	142					3028		3028	6	PAID IN FULL	MAY 31 1956											
7	H	76					1620		1620	7	PAID IN FULL	MAY 31 1956	7163		7952								
8	H	53					1130		1130	8	PAID IN FULL	MAY 31 1956											
9	H	102					2174		2174	9	PAID IN FULL	MAY 31 1956											
10										10													
11	H	76					1620		1620	11	2nd Half Paid 1st Half Paid	OCT 31 JUN 29 1956											
12	H	84					1790		1790	12	2nd Half Paid 1st Half Paid	OCT 31 JUN 29 1956	9367										
13	H	53					1130		1130	13	2nd Half Paid 1st Half Paid	OCT 31 JUN 29 1956	15683										
14	H	123					2622		2622	14	2nd Half Paid 1st Half Paid	OCT 31 JUN 29 1956											
15										15													
16	H	53					1130		1130	16	PAID IN FULL	SEP 17 1956											
17	H	84					1790		1790	17	PAID IN FULL	SEP 17 1956	13705										
18	H	88					1876		1876	18	PAID IN FULL	SEP 17 1956											
19	H	112					2388		2388	19	PAID IN FULL	SEP 17 1956											
20										20													
	H	1426					30400		30400					16054		14346							

[illegible]

[illegible]

Form 5CD (55) MILLER-DAVIS COMPANY, MINNEAPOLIS

[illegible]

Cass County, Minnesota, for Taxes for the Year 1955.

[illegible]

[illegible]

11

Persona

Assessment Roll and Tax List of Real Property in the Down of May,
 *Indicate Type of Property: R-Residential, C-Commercial, I-Industrial, U-Utility, F-Farm

*Indicate Type of Property: R-Residential, C-Commercial, I-Industrial, U-Utility, F-Farm

IN WHOSE NAME ASSESSED		TO WHOM TRANSFERRED	DESCRIPTION OF PROPERTY						TRUE AND FULL VALUATIONS				ASSESSED VALUATIONS							FINAL EQUALIZED VALUE							
			SUBDIVISION	Sec. or Lot	Town or Block	Rng	Number of Acres of Land	No. School District	Indicate Homestead Yes or No	Indicate Agricultural Yes or No	Indicate Type of Property	LAND Exclusive of Structures and Improvements	BUILDINGS and Other Structures	MACHINERY Permanently Attached to Real Estate	TOTAL True and Full Value	RURAL		ALL OTHER			MACHINERY Permanently Attached to Real Estate	TOTAL ASSESSED VALUE	Total Assessed Value as Equalized by the Board of Review				
																Acres	100ths	Homestead Up to \$4,000 20%	Over \$4,000 and Non-Homestead 33 1/3 %					Homestead Up to \$4,000 25%	Over \$4,000 and Non-Homestead 40%		
State of Minnesota			1	N E 1/4 of N E 1/4				30 134 31	66																		
State of Minnesota			2	N W 1/4 of N E 1/4					57																		
State of Minnesota			3	S W 1/4 of N E 1/4																							
State of Minnesota			4	S E 1/4 of N E 1/4																							
			5																								
Knut Hanneh Kristenson			6	N E 1/4 of N W 1/4				Lot 1	40																		
" "			7	N W 1/4 of N W 1/4				Lot 2	40																		
" "			8	S W 1/4 of N W 1/4				Lot 7	40																		
" "			9	S E 1/4 of N W 1/4				Lot 8	40																		
Frank L. Sullivan			10	Lots 3-6-11-14					160																		
Arthur F. & Frances M. Sampson			11	N E 1/4 of S W 1/4				Lot 9	40																		
" "			12	N W 1/4 of S W 1/4				Lot 10	40																		
" "			13	S W 1/4 of S W 1/4				Lot 15	40																		
" "			14	S E 1/4 of S W 1/4				Lot 16	40																		
Frank L. Sullivan			15	Lots 4-5-12-13					148 84																		
Arthur F. & Frances M. Sampson			16	N E 1/4 of S E 1/4					40																		
Kalter S. Berglund			17	N W 1/4 of S E 1/4					40																		
" "			18	S W 1/4 of S E 1/4					40																		
Arthur F. & Frances M. Sampson			19	S E 1/4 of S E 1/4					40																		
			20																								
									788 84																		

Cass County, Minnesota, for Taxes for the Year 1955.

SOLD FOR TAXES	VALUATIONS BY SCHOOL DISTRICTS AS EQUALIZED BY DEPARTMENT OF TAXATION						Tax including State Homestead Mills	State Tax on Non-Homestead Mills	SPECIAL TAXES	TOTAL TAXES	PAID	WHEN PAID	Number of Receipt	March Settlement 1956	June Settlement 1956	Penalty	November Settlement 1956	Penalty	Collections to First Monday in January 1957	Penalty	Delinquent on First Monday in January 1957	Total Delinquent Tax and Penalty	REMARKS	
	District No. Rate.....Mills	District No. Rate.....Mills	District No. Rate.....Mills	District No. Rate.....Mills	District No. Rate.....Mills	District No. Rate.....Mills																		
	Dollars	Dollars	Dollars	Dollars	Dollars	Dollars																		
1																								
2																								
3																								
4																								
5																								
6					H 70		1598			1598	6 PAID IN FULL	MAY 31 1956												
7					H 181		4132			4132	7 PAID IN FULL	MAY 31 1956	7171		84 00									
8					H 35		798			798	8 PAID IN FULL	MAY 31 1956												
9					H 82		1872			1872	9 PAID IN FULL	MAY 31 1956												
10					H 309		7052			7052	2nd Half Paid	OCT 31 1956	15688											
					H 55		1256			1256	1st Half Paid	MAY 31 1956	7169		35 26		3526							
11					Abate #6833		2100	46		2146	1st Half Paid	MAY 21 1956												
12					H 199		4520			4520	Balance Paid													
					H 330		7532	170		7702	1st Half Paid	MAY 31 1956	15674											
13					H 59		1346			1346	Balance Paid													
					H 98		2236	50		2286	1st Half Paid	MAY 21 1956	7170		70 36		1226							
14					H 50		1140			1140	Balance Paid													
					H 82		1844	42		1886	1st Half Paid	MAY 31 1956												
15					H 247		5638			5638	2nd Half Paid	OCT 31 1956	15688											
					H 110		2510	56		2566	1st Half Paid	MAY 31 1956	7169		28 19		2819							
16											Balance Paid	OCT 31 1956	15147											
											Part Paid	OCT 31 1956	15730											
17					H 42		958			958	2nd Half Paid	OCT 31 1956												
											1st Half Paid	MAY 31 1956	8726		9 24		924							
18					H 39		890			890	2nd Half Paid	OCT 31 1956												
											1st Half Paid	MAY 31 1956	15674											
19											Balance Paid	OCT 31 1956	15147											
											Part Paid	OCT 31 1956	15730											
20																								
					H 1005		41720	422		42142														
					823																			
					1828																			
				</																				

Assessment Roll and Tax List of Real Property in the Down of May,
 *Indicate Type of Property: R - Residential, C - Commercial, I - Industrial, U - Utility, F - Farm

Form SCD (55) MILLER-DAY COMPANY, NEWBORN, N.J.

[illegible]

Cass County, Minnesota, for Taxes for the Year 1955.

SOLD FOR TAXES	VALUATIONS BY SCHOOL DISTRICTS AS EQUALIZED BY DEPARTMENT OF TAXATION						Tax including State HomesteadMills	State Tax on Non-HomesteadMills	SPECIAL TAXES	TOTAL TAXES	PAID	WHEN PAID	Number of Receipt	March Settlement 1956	June Settlement 1956	Penalty	November Settlement 1956	Penalty	Collections to First Monday in January 1957	Penalty	Delinquent on First Monday in January 1957	Total Delinquent Tax and Penalty	REMARKS
	District No. Rate.....Mills	District No. Rate.....Mills	District No. Rate.....Mills	District No. Rate.....Mills	District No. Rate.....Mills	District No. Rate.....Mills																	
	Dollars	Dollars	Dollars	Dollars	Dollars	Dollars																	
1					91	2076	48		2124	1	2nd Half Paid OCT 3 1 1956												
2					82	1872	42		1914	2	1st Half Paid MAY 3 1 1956 2nd Half Paid OCT 3 1 1956	7174		4494		4494							
3					116	2648	60		2708	3	1st Half Paid MAY 3 1 1956 2nd Half Paid OCT 3 1 1956	15696											
4					96	2192	50		2242	4	1st Half Paid MAY 3 1 1956 2nd Half Paid OCT 3 1 1956												
5					H 390	6618			6618	5	PAID IN FULL DEC 3 1 1956									6618			
6					88	2008	46		2054	6	1st Half Paid MAY 3 1 1956 2nd Half Paid OCT 3 1 1956												
7					88	2008	46		2054	7	1st Half Paid MAY 3 1 1956 2nd Half Paid OCT 3 1 1956	7175		4108		4108							
8					88	2008	46		2054	8	1st Half Paid MAY 3 1 1956 2nd Half Paid OCT 3 1 1956	15681											
9					88	2008	46		2054	9	1st Half Paid MAY 3 1 1956 2nd Half Paid OCT 3 1 1956												
10					H 122	2784			2784	10	PAID IN FULL DEC 3 1 1956	1658							2784	223			
11					88	2008	46		2054	11	1st Half Paid MAY 3 1 1956 2nd Half Paid OCT 3 1 1956												
12					88	2008	46		2054	12	1st Half Paid MAY 3 1 1956 2nd Half Paid OCT 3 1 1956	7172		4104		4104							
13					88	2008	46		2054	13	1st Half Paid MAY 3 1 1956 2nd Half Paid OCT 3 1 1956	15675											
14					88	2008	46		2054	14	1st Half Paid MAY 3 1 1956 2nd Half Paid OCT 3 1 1956												
15					H 295	6734			6734	15	PAID IN FULL DEC 3 1 1956	1658							6734	538			
16					88	2008	44		2052	16	1st Half Paid MAY 3 1 1956 2nd Half Paid OCT 3 1 1956												
17					88	2008	44		2052	17	1st Half Paid MAY 3 1 1956 2nd Half Paid OCT 3 1 1956												
18					88	2008	44		2052	18	1st Half Paid MAY 3 1 1956 2nd Half Paid OCT 3 1 1956	15675		4108		4108							
19					88	2008	44		2052	19	1st Half Paid MAY 3 1 1956 2nd Half Paid OCT 3 1 1956	7172											
20					H 707 1441 2148	49020	744		49764	20				16814		16814		9518		6618			

Assessment Roll and Tax List of Real Property in the Down of May,
 *Indicate Type of Property: R-Residential, C-Commercial, I-Industrial, U-Utility, F-Farm

Form SCD (55) MILLER-BAYNE COMPANY, MINNEAPOLIS

IN WHOSE NAME ASSESSED	TO WHOM TRANSFERRED	DESCRIPTION OF PROPERTY						No. School District	Indicate Homestead Yes or No	Indicate Agricultural Yes or No	Indicate Type of Property	TRUE AND FULL VALUATIONS				ASSESSED VALUATIONS						Total Assessed Value as Equalized by the Board of Review	FINAL EQUALIZED VALUE
		SUBDIVISION	Sec. or Lot	Town or Block	Rng.	Number of Acres of Land						LAND Exclusive of Structures and Improvements	BUILDINGS and Other Structures	MACHINERY Permanently Attached to Real Estate	TOTAL True and Full Value	RURAL		ALL OTHER		MACHINERY Permanently Attached to Real Estate	TOTAL ASSESSED VALUE		
						Acres	100ths									Homestead Up to \$4,000 20%	Over \$4,000 and Non-Homestead 33 1/3 %	Homestead Up to \$4,000 25%	Over \$4,000 and Non-Homestead 40%				
Arthur J. Dahl + Ethel Dahl		1				NE 1/4 of NE 1/4	32	134	31	40	327	Yes											
"	"	"	"			NW 1/4 of NE 1/4				40		"	"										
"	"	"	"			SW 1/4 of NE 1/4				40		"	"										
"	"	"	"			SE 1/4 of NE 1/4				40		"	"										
		5																					
Arvon + Luetina Harey		6				NE 1/4 of NW 1/4				40		No	"										
"	"	"	"			NW 1/4 of NW 1/4				40		"	"										
"	"	"	"			SW 1/4 of NW 1/4				40		"	"										
"	"	"	"			SE 1/4 of NW 1/4				40		"	"										
		10																					
Armin L. + Lyle B. Holmberg		11				NE 1/4 of SW 1/4				40		Yes	"										
"	"	"	"			NW 1/4 of SW 1/4				40		"	"										
"	"	"	"			SW 1/4 of SW 1/4				40		"	"										
"	"	"	"			SE 1/4 of SW 1/4				40		"	"										
		15																					
Earl, Katherine + John L. Hervey		16				NE 1/4 of SE 1/4				40		"	"										
"	"	"	"			NW 1/4 of SE 1/4				40		"	"										
"	"	"	"			SW 1/4 of SE 1/4				40		"	"										
"	"	"	"			SE 1/4 of SE 1/4				40		"	"										
		20																					
										640													

Assessment Roll and Tax List of Real Property in the Down of May
*Indicate Type of Property: R-Residential, C-Commercial, I-Industrial, U-Utility, F-Farm

Form SCD (55) BULLER-BATH COMPANY, MINNEAPOLIS

IN WHOSE NAME ASSESSED	TO WHOM TRANSFERRED	DESCRIPTION OF PROPERTY					No. School District	Indicate Homesteaded Yes or No	Indicate Agricultural Yes or No	Indicate Type of Property	TRUE AND FULL VALUATIONS				ASSESSED VALUATIONS						Total Assessed Value as Equalized by the Board of Review	FINAL EQUALIZED VALUE		
		SUBDIVISION	Sec. or Lot	Town or Block	Rng	Number of Acres of Land					LAND Exclusive of Structures and Improvements	BUILDINGS and Other Structures	MACHINERY Permanently Attached to Real Estate	TOTAL True and Full Value	RURAL		ALL OTHER		MACHINERY Permanently Attached to Real Estate 33 1/3 %	TOTAL ASSESSED VALUE				
															Homestead Up to \$4,000 20%	Over \$4,000 and Non-Homesteaded 33 1/3 %	Homestead Up to \$4,000 25%	Over \$4,000 and Non-Homesteaded 40%						
																							Dollars	Dollars
Miker Kasnack		1	NE 1/4 of NE 1/4 Sec. 20 of E. 16th	33	13	4	31	38	27	No	Yes													
"		2	NW 1/4 of NE 1/4					40	"	"														
Clinton Converse & Evelyn Converse		3	SW 1/4 of NE 1/4					40	"	"														
"		4	SE 1/4 of NE 1/4					40	"	"														
Alvino D. & Orpha L. Boylan		5	N. 20th of E. 16th of NE 1/4 of NE 1/4					2	Yes	"														
Arthur Klingbeil		6	NE 1/4 of NW 1/4					40	"	"														
"		7	NW 1/4 of NW 1/4					40	"	"														
George D. Moon		8	SW 1/4 of NW 1/4					40	No	"														
"		9	SE 1/4 of NW 1/4					40	"	"														
"		10																						
"		11	NE 1/4 of SW 1/4					40	"	"														
James H. & Hazel M. Converse		12	NW 1/4 of SW 1/4					40	"	"														
"		13	SW 1/4 of SW 1/4					40	"	"														
George D. Moon		14	SE 1/4 of SW 1/4					40	"	"														
"		15																						
Clinton Converse & Evelyn Converse		16	NE 1/4 of SE 1/4					40	"	"														
"		17	NW 1/4 of SE 1/4					40	"	"														
John M. Schmit		18	SW 1/4 of SE 1/4					40	Yes	"														
"		19	SE 1/4 of SE 1/4					40	"	"														
		20																						
								640																

Cass County, Minnesota, for Taxes for the Year 1955.

SOLD FOR TAXES	VALUATIONS BY SCHOOL DISTRICTS AS EQUALIZED BY DEPARTMENT OF TAXATION						Tax including State Homestead	State Tax on Non-Homestead	SPECIAL TAXES	TOTAL TAXES	PAID	WHEN PAID	Number of Receipt	March Settlement 1956	June Settlement 1956	Penalty	November Settlement 1956	Penalty	Collections to First Monday in January 1957	Penalty	Delinquent on First Monday in January 1957	Total Delinquent Tax and Penalty	REMARKS
	District No.	District No.	District No.	District No.	District No.	District No.																	
	Rate	Rate	Rate	Rate	Rate	Rate																	
1						84	1918	44		1962	1	PAID IN FULL MAY 31 1956	7178		4016								
2						88	2008	46		2054	2	PAID IN FULL MAY 31 1956											
3						80	1826	42		1868	3	PAID IN FULL MAY 31 1956	7176		3736								
4						80	1826	42		1868	4	PAID IN FULL MAY 31 1956											
5						H 42	758			958	5										958	1054	
6						H 63	1438			1438	6										1438		
7						H 194	4428			4428	7										4428		
8						145	3310	14		3384	8										3384	3722	
9						125	2854	64		2918	9										2918	3210	
10											10												
11						93	2132	48		2170	11										2170	2387	
12						106	2420	54		2474	12	Balance Paid OCT 31 1956	8727										
13						141	3218	72		3290	13	Balance Paid OCT 31 1956	10682										
14						98	2236	50		2286	14	Part Paid MAY 31 1956											
15											15												
16						80	1826	42		1868	16	PAID IN FULL MAY 31 1956	7176		3736								
17						80	1826	42		1868	17	PAID IN FULL MAY 31 1956											
18						H 104	2374			2374	18	PAID IN FULL MAY 31 1956	7177		3926								
19						H 68	1552			1552	19	PAID IN FULL MAY 31 1956											
20						H 471	38140	620		38760	20				18309	2869					17572		

Assessment Roll and Tax List of Real Property in the Down of May
*Indicate Type of Property: R-Residential, C-Commercial, I-Industrial, U-Utility, F-Farm

Form SCD (55) BILLINGHAM COUNTY, MINNESOTA

IN WHOSE NAME ASSESSED	TO WHOM TRANSFERRED	DESCRIPTION OF PROPERTY						TRUE AND FULL VALUATIONS					ASSESSED VALUATIONS						Total Assessed Value as Equalized by the Board of Review	FINAL EQUALIZE VALUE		
		SUBDIVISION	Sec. or Lot	Town or Block	Rng	Number of Acres of Land	No. School District	Indicate Homestead Tax or No	Indicate Agricultural Tax or No	Indicate Type of Property	LAND Exclusive of Structures and Improvements	BUILDINGS and Other Structures	MACHINERY Permanently Attached to Real Estate	TOTAL True and Full Value	RURAL		ALL OTHER				MACHINERY Permanently Attached to Real Estate	TOTAL ASSESSED VALUE
															Homestead Up to \$4,000 20%	Over \$4,000 and Non-Homestead 33 1/3 %	Homestead Up to \$4,000 25%	Over \$4,000 and Non-Homestead 40%				
State of Minnesota (Cont. to Emil Pietz)		NE 1/4 of NE 1/4	34	13	431	40	24-15	Yes	Yes													
Edward & Sadie Ackerson		NW 1/4 of NE 1/4				40		"	"													
Herman Hanebrith, Guardian		SW 1/4 of NE 1/4 less 200 ac.				38		"	"													
Edna Olson		SE 1/4 of NE 1/4				40		No	"													
E. R. & Hazel Allen, State of Minnesota		NE 1/4 of NW 1/4 less 10 1/4 ac.				41		"	"													
Raymond & Dorothy M. Forshell		NW 1/4 of NW 1/4 less 1 ac.				39		Yes	"													
"	"	SW 1/4 of NW 1/4				40		"	"													
"	"	SE 1/4 of NW 1/4				40		"	"													
Edward L. Schmitz		NE 1/4 of SW 1/4				40		No	"													
"	"	NW 1/4 of SW 1/4				40		"	"													
"	"	SW 1/4 of SW 1/4				40		"	"													
"	"	SE 1/4 of SW 1/4				40		"	"													
Edward & Sadie Ackerson		NE 1/4 of SE 1/4				40		Yes	"													
Herman Hanebrith, Guardian		NW 1/4 of SE 1/4				40		"	"													
"	"	SW 1/4 of SE 1/4				40		"	"													
State of Minnesota		SE 1/4 of SE 1/4																				

598

Cass County, Minnesota, for Taxes for the Year 1955.

SOLD FOR TAXES	VALUATIONS BY SCHOOL DISTRICTS AS EQUALIZED BY DEPARTMENT OF TAXATION						Tax including State HomesteadMills	State Tax on Non- Homestead 5.11.....Mills	SPECIAL TAXES	TOTAL TAXES	PAID	WHEN PAID	Number of Receipt	March Settlement 1956	June Settlement 1956	Penalty	November Settlement 1956	Penalty	Collections to First Monday in January 1957	Penalty	Delinquent on First Monday in January 1957	Total Delinquent Tax and Penalty	REMARKS
	District	District	District	District	District	District																	
	No.	No.	No.	No.	No.	No.																	
	Rate	Rate	Rate	Rate	Rate	Rate																	
Dollars	Dollars	Dollars	Dollars	Dollars	Dollars	\$ cts.	\$ cts.	\$ cts.	\$ cts.	Month	Day	Year	\$ cts.	\$ cts.	\$ cts.	\$ cts.	\$ cts.	\$ cts.	\$ cts.	\$ cts.	\$ cts.		
1	Ray Co. H	51					1088			1088	1	1st Half Paid	MAY 31 1956	8704		544				544	598		
2	H	53					1130			1130	2	2nd Half Paid	OCT 31 1956	15671		565		565					
3	H	36					768			768	3	1st Half Paid	MAY 31 1956	15711		384		384					
4		88					1876	46		1922	4	2nd Half Paid	OCT 31 1956	16171		961		961					
5											5	1st Half Paid	MAY 31 1956	7186		961		961					
6											6												
7	H	134					2856			2856	7	2nd Half Paid	OCT 31 1956	15711		1428		1428					
8	H	48					1024			1024	8	1st Half Paid	MAY 31 1956	8307		512		512					
9	H	36					768			768	9	2nd Half Paid	OCT 31 1956	8307		384		384					
10											10	1st Half Paid	MAY 31 1956										
11	H	101					2154			2154	11									2154	2369		
12	H	196					4178			4178	12									4178	4596		
13	H	52					1108			1108	13									1108	1219		
14	H	63					1344			1344	14									1344	1478		
15											15												
16	H	79					1684			1684	16	2nd Half Paid	OCT 31 1956	15671		842		842					
17	H	67					1428			1428	17	1st Half Paid	MAY 31 1956	8338		714		714					
18	H	49					1044			1044	18	2nd Half Paid	OCT 31 1956	15711		522		522					
19											19	1st Half Paid	MAY 31 1956	8307									
20											20												
	H	968 88 1053					22450	46		22496						6856		6312		9328			

2450 46 22496

6856 6312

9328

Assessment Roll and Tax List of Real Property in the Down of May,
 *Indicate Type of Property: R-Residential, C-Commercial, I-Industrial, U-Utility, F-Farm

Form 5CD (55) MILLER-DAY COMPANY, MINNEAPOLIS

IN WHOSE NAME ASSESSED	TO WHOM TRANSFERRED	DESCRIPTION OF PROPERTY						No. School District	Indicate Homestead Yes or No	Indicate Agricultural Yes or No	Indicate Type of Property	TRUE AND FULL VALUATIONS				ASSESSED VALUATIONS						Total Assessed Value as Equalized by the Board of Review	FINAL EQUALIZED VALUE																																																																																																																																																																																																																																																																																																																																																																																																																																																																																																																																																																																																																																																																																																																																																																																																																																																																																																																																																																																																																																																																																																																																																																																																																																														
		SUBDIVISION	Sec. of Lot	Town or Block	Rng	Number of Acres of Land	LAND Exclusive of Structures and Improvements					BUILDINGS and Other Structures	MACHINERY Permanently Attached to Real Estate	TOTAL True and Full Value	RURAL		ALL OTHER		MACHINERY Permanently Attached to Real Estate	TOTAL ASSESSED VALUE																																																																																																																																																																																																																																																																																																																																																																																																																																																																																																																																																																																																																																																																																																																																																																																																																																																																																																																																																																																																																																																																																																																																																																																																																																																	
															Homestead Up to \$4,000 20%	Over \$4,000 and Non-Homestead 33 1/3 %	Homestead Up to \$4,000 25%	Over \$4,000 and Non-Homestead 40%																																																																																																																																																																																																																																																																																																																																																																																																																																																																																																																																																																																																																																																																																																																																																																																																																																																																																																																																																																																																																																																																																																																																																																																																																																																			
																					Dollars			Dollars	Dollars	Dollars																																																																																																																																																																																																																																																																																																																																																																																																																																																																																																																																																																																																																																																																																																																																																																																																																																																																																																																																																																																																																																																																																																																																																																																																																																											
						Acres	100ths																																																																																																																																																																																																																																																																																																																																																																																																																																																																																																																																																																																																																																																																																																																																																																																																																																																																																																																																																																																																																																																																																																																																																																																																																																																														</

480

Cass County, Minnesota, for Taxes for the Year 1955.

SOLD FOR TAXES	VALUATIONS BY SCHOOL DISTRICTS AS EQUALIZED BY DEPARTMENT OF TAXATION						Tax Including State Homestead	State Tax on Non-Homestead	SPECIAL TAXES	TOTAL TAXES	PAID	WHEN PAID	Number of Receipt	March Settlement 1956	June Settlement 1956	Penalty	November Settlement 1956	Penalty	Collections to First Monday in January 1957	Penalty	Delinquent on First Monday in January 1957	Total Delinquent Tax and Penalty	REMARKS
	District	No.	District	No.	District	No.																	
	Rate	Mills	Rate	Mills	Rate	Mills																	
	Dollars	Dollars	Dollars	Dollars	Dollars	Dollars	\$ cts.	\$ cts.	\$ cts.	\$ cts.		Month Day Year		\$ cts.	\$ cts.	\$ cts.	\$ cts.	\$ cts.	\$ cts.	\$ cts.	\$ cts.	\$ cts.	\$ cts.
1	H 48						1024			1024	1	PAID IN FULL MAY 31 1956	8716		2048								
2	H 48						1024			1024	2	PAID IN FULL MAY 31 1956											
3											3												
4											4												
5											5												
6	H 36						768			768	6	2nd Half Paid OCT 31 1956											
7	H 123						2622			2622	7	2nd Half Paid OCT 31 1956	1671		384		384						
8	H 76						1620			1620	8	2nd Half Paid OCT 31 1956	8338		1311		1311						
9	55						1172	28		1200	9	PAID IN FULL MAY 31 1956	8945		1200								
10											10												
11	76						1620	40		1660	11	PAID IN FULL MAY 31 1956	8945		1660								
12	101						2154	52		2206	12	PAID IN FULL MAY 31 1956			2206								
13	67						1428	34		1462	13												
14	60						1280	32		1312	14	PAID IN FULL MAY 31 1956	8945		1312								
15											15												
16											16												
17											17												
18	H 48						1024			1024	18	2nd Half Paid OCT 1 1956											
19	H 36						768			768	19	2nd Half Paid OCT 1 1956	6032		896		896						
20	H 415						16504	186		16690	20	2nd Half Paid OCT 1 1956	14084										

359
774

11827

3401

1462

Assessment Roll and Tax List of Real Property in the Down of May,
 *Indicate Type of Property: R-Residential, C-Commercial, I-Industrial, U-Utility, F-Farm

*Indicate Type of Property: R - Residential, C - Commercial, I - Industrial, U - Utility, F - Farm

[illegible]

Cass County, Minnesota, for Taxes for the Year 1955.

SOLD FOR TAXES	VALUATIONS BY SCHOOL DISTRICTS AS EQUALIZED BY DEPARTMENT OF TAXATION						Tax including State Homestead Mills	State Tax on Non-Homestead Mills	SPECIAL TAXES	TOTAL TAXES	PAID	WHEN PAID	Number of Receipt	March Settlement 1956	June Settlement 1956	Penalty	November Settlement 1956	Penalty	Collections to First Monday in January 1957	Penalty	Delinquent on First Monday in January 1957	Total Delinquent Tax and Penalty	REMARKS
	District No.	District No.	District No.	District No.	District No.	District No.																	
	Rate.....	Rate.....	Rate.....	Rate.....	Rate.....	Rate.....																	
 Mills Mills Mills Mills Mills Mills																	
Dollars	Dollars	Dollars	Dollars	Dollars	Dollars	\$ cts.	\$ cts.	\$ cts.	\$ cts.	Month Day Year	\$ cts.	\$ cts.	\$ cts.	\$ cts.	\$ cts.	\$ cts.	\$ cts.	\$ cts.	\$ cts.	\$ cts.	\$ cts.		
1	H	48					1024			1024	1 PAID IN FULL MAY 31 1956			1024									
2	H	76					1620			1620	2 PAID IN FULL MAY 31 1956	8716		1620									
3	H	48					1024			1024	3 PAID IN FULL MAY 31 1956			1024									
4	OLD FOR TAXES	95					2026	50		2076	4										2076		
5											5												
6	H	89					1898			1898	6 PAID IN FULL MAY 31 1956	8716		1898									
7											7												
8											8												
9	H	48					1024			1024	9 PAID IN FULL MAY 31 1956	8716		1024									
10											10												
11	H	85					1812			1812	11 PAID IN FULL MAY 31 1956	7165		2408									
12	H	28					596			596	12 PAID IN FULL MAY 31 1956												
13											13												
14		110					2344	56		2400	14										2400 x 2640		
15											15												
16		110					2344	56		2400	16 PAID IN FULL MAY 31 1956	7266		2400									
17	H	48					1024			1024	17 PAID IN FULL MAY 31 1956	7165		1024									
18		150					3198	78		3276	18										3276 x 3604		
19		135					2878	70		2948	19										2948 x 3243		
20											20												
	H	470 600 1090					22812	310		23122				12422							10700		

Form 5CD (55) MILLER-DAY'S COMPANY, MINNEAPOLIS

[illegible][illegible]