

Auditor's Office, Cass County, Minnesota.

I, E. A. Bacon Auditor of Cass County, and
State of Minnesota, do hereby certify that the following is a correct list of the Taxes levied on the Real and Personal
Property in the Town of May for the year 1915 (L. S.)

WITNESS my hand and official seal this 3 day of January 1916.
[Signature] County Auditor.

Treasurer's Office, Cass County, State of Minnesota.

RECEIVED this, the first Monday (being the 3 day) of January, A. D. 1916, of E. A. Bacon
Auditor of Cass County, Minnesota, the Tax List of all taxable Real and Personal Property in the Town
of May in said County of Cass for the year A. D. 1915, as specified above, and
amounting to thirteen thousand nine hundred forty & 71/100 Dollars.

W. J. McKee
Treasurer of Cass County.

State of Minnesota,

OFFICE OF COUNTY TREASURER

County of Cass

Walker, Minn. Jan. 1 1917

To C.D. Bacon County Auditor:

SIR:—I herewith return to you the Tax List for the Town of May in said Cass County, for the year 1915 heretofore received from you. I certify that I have compared the same with the duplicate receipts in your office, and have written opposite the amount of each tax so received the words "One-Half Paid" or "Paid in Full" as the case may be, and the number of my receipt given in discharge of said Tax, and each tract or lot of Real Property against which the Taxes remain unpaid is delinquent for said year.

Yours respectfully,

W. J. McKelown County Treasurer.

Walker, Minn. Jan. 2, 1917

Auditor's Office, Cass County, Minn.

RECEIVED OF W. J. McKelown County Treasurer, the Tax List for the Town of May in said County of Cass for the year 1915.

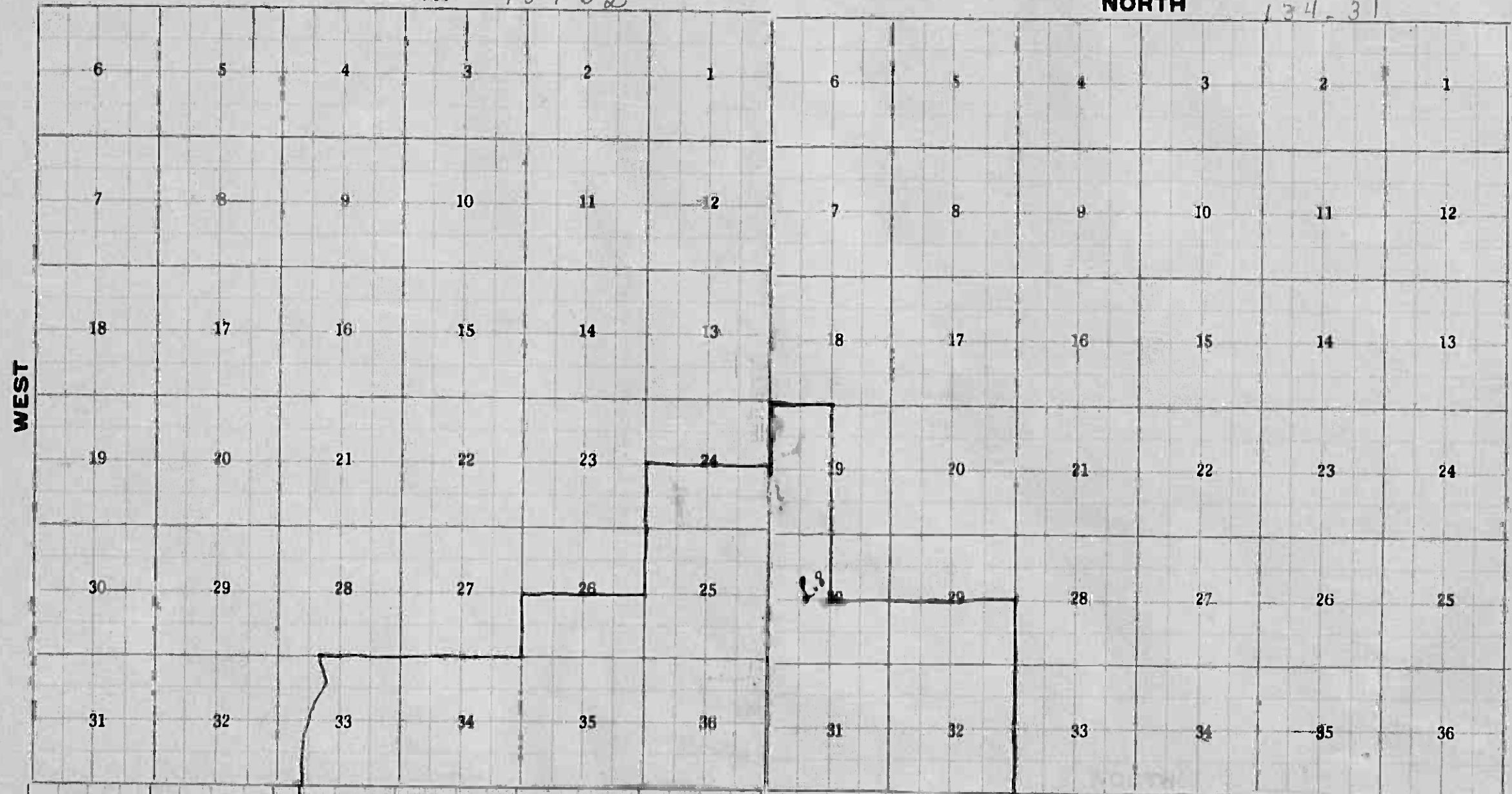
C.D. Bacon County Auditor.

School Dist #12

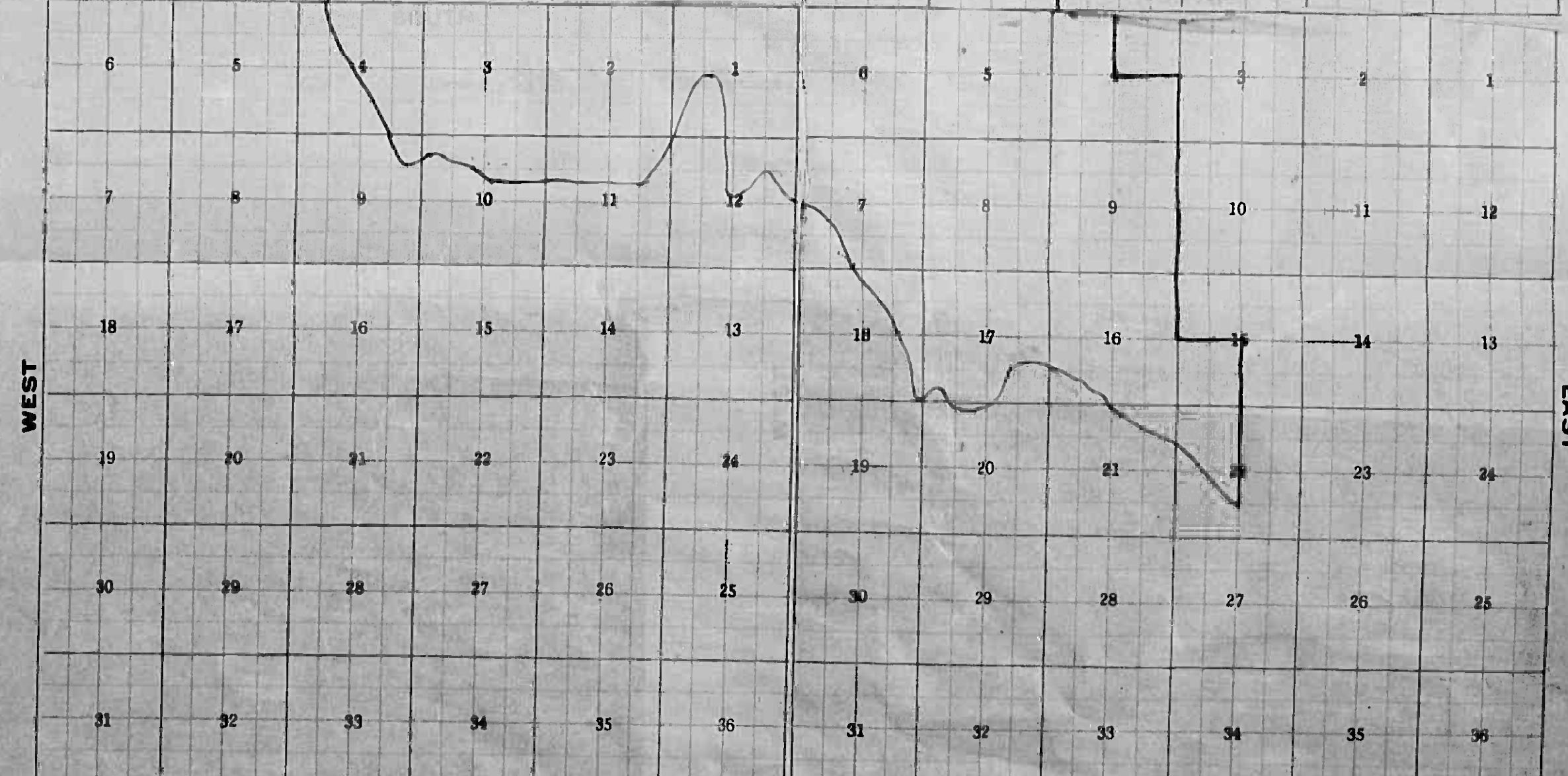
6th of June - 1916

NORTH 134-32

NORTH 134-31



133-32



133-31

Tax List of Real Property in the Town of May

Cass County, Minnesota, for Taxes of the Year 1915

IN WHOSE NAME ASSESSED	TO WHOM TRANSFERRED	Sold for Taxes	SUBDIVISION	Sec. or Lot	Town or Block	Rng.	No. of Acres Acres 100ths	GENERAL TAXES					SCHOOL DISTRICT		TOTAL TAXES	PAID	WHEN PAID	No. of Receipt	March Settlement	June Settlement	Penalty	November Settlement	Penalty	Collections to First Monday in January	Penalty	Delinquent on First Monday in January	REMARKS	
								State	State	Ditch	District	District	Mills	Mills														Mills
Footings Brought Forward																												
Lake Region Land Co. J.C. Hicks			NE 1/4 of NE 1/4 Lot 1	3	123	31	40		180																			
Andrew Rosvold			NW 1/4 of NE 1/4	"	"	"	36 70		196																			
Aug. Miller			SW 1/4 of NE 1/4	"	"	"	40		196																			
Ralph B. Millard J.C. Hicks			SE 1/4 of NE 1/4	"	"	"	40		280																			
H.S. Gearhart			NE 1/4 of NW 1/4	"	"	"	40		196																			
Patrick Mee			NW 1/4 of NW 1/4	"	"	"	40		210																			
Chas. McCrewe			SW 1/4 of NW 1/4	"	"	"	40		183																			
			SE 1/4 of NW 1/4	"	"	"	40		180																			
N.S. Finn			NE 1/4 of SW 1/4	"	"	"	40		169																			
Aug. Miller			NW 1/4 of SW 1/4	"	"	"	40		180																			
N.S. Finn			SW 1/4 of SW 1/4	"	"	"	40		180																			
			SE 1/4 of SW 1/4	"	"	"	40		180																			
Geo. Warden			NE 1/4 of SE 1/4	"	"	"	40		198																			
N.E. Finn			NW 1/4 of SE 1/4	"	"	"	40		180																			
			SW 1/4 of SE 1/4	"	"	"	40		180																			
Geo. Warden			SE 1/4 of SE 1/4	"	"	"	40		180																			
Footings Carried Forward																												
							636 70	2968																				

1074 Paid in Full APR 21 1916 2805
 2nd Half Paid OCT 31 1916 9187
 1169 1st Half Paid MAY 31 1916 8307
 1169 Paid in Full OCT 31 1916 9886
 1074 Paid in Full MAY 26 1916 4399
 1169 Paid in Full FEB 29 1916 2071
 2nd Half Paid OCT 23 1916 587
 1253 1st Half Paid MAY 31 1916 8298
 2nd Half Paid OCT 23 1916 6523
 1091 1st Half Paid MAY 31 1916 8604
 1074 2nd Half Paid OCT 26 1916 3595
 1st Half Paid MAY 16 1916 537
 1008 Paid in Full MAR 27 1916 2340
 1008
 1074 Paid in Full OCT 31 1916 9886
 1074 Paid in Full OCT 31 1916 2148 215
 1074 Paid in Full MAR 27 1916 2340
 1074
 1181 Paid Feb 10 1917 6235
 1074 Paid in Full MAR 27 1916
 1074 Paid in Full MAR 27 1916 2340
 2148
 1074 Paid Feb 10 1917 6235
 1074

17706

Tax List of Real Property in the Town of May

Kimball-Storer Co., Minneapolis, Minn.—78055

Cass County, Minnesota, for Taxes of the Year 1915

IN WHOSE NAME ASSESSED	TO WHOM TRANSFERRED	Sold for Taxes	SUBDIVISION	Sec. or Lot	Town or Block	Rng.	No. of Acres	GENERAL TAXES			S.R.H. Ditch No.	SCHOOL DISTRICT		TOTAL TAXES	PAID	No. of Receipt	March Settlement	June Settlement	Penalty	November Settlement	Penalty	Collections to First Monday in January	Penalty	Delinquent on First Monday in January	REMARKS	
								State	County	Local Schl.		State	School													Bonds
								Dollars	¢	cts.	¢	cts.	¢	cts.	¢	cts.	¢	cts.	¢	cts.	¢	cts.	¢	cts.	¢	cts.
Footings Brought Forward,																										
White & Morrison			NE 1/4 of NE 1/4 Lot 11	7	10		331.4868	219	13	06	87			2nd Half Paid OCT 31 1916 9658												
John Doost			NW 1/4 of NE 1/4 " 4 & 5	"	"	"	7751	349	20	82	136			1393 1st Half Paid MAY 4 1916 3101			697		696							
W. B. Jones Pearl Cameron			SW 1/4 of NE 1/4 " 3	"	"	"	40	180	10	74	74			2218 Adm. Full April 10/16 2543			2218									
D. Behmer			SE 1/4 of NE 1/4 " 6	"	"	"	40	180	10	74	74			1148 2nd Half Paid OCT 24 1916 445			574		574							
			NE 1/4 of NW 1/4											1148 1st Half Paid MAY 2 1915 3637			1148									
			NW 1/4 of NW 1/4																							
			SW 1/4 of NW 1/4																							
			SE 1/4 of NW 1/4																							
			NE 1/4 of SW 1/4																							
			NW 1/4 of SW 1/4																							
			SW 1/4 of SW 1/4																							
			SE 1/4 of SW 1/4																							
			NE 1/4 of SE 1/4																							
			NW 1/4 of SE 1/4																							
			SW 1/4 of SE 1/4																							
			SE 1/4 of SE 1/4																							
							20619	928	55	36	371			5407												
Footings Carried Forward,																										

Tax List of Real Property in the Town of May

Cass County, Minnesota, for Taxes of the Year 1915

IN WHOSE NAME ASSESSED	TO WHOM TRANSFERRED	Sold for Taxes	SUBDIVISION	Sec. or Lot	Town or Block	No. of Acres	VALUATION	GENERAL TAXES			Ditch No.	SCHOOL DISTRICT		TOTAL TAXES	PAID	WHEN PAID	No. of Receipt	March Settlement	June Settlement	Penalty	November Settlement	Penalty	Collections to First Monday in January	Penalty	Delinquent on First Monday in January	REMARKS	
								State	County	Local		District No.	Rate														
								Dollars	\$	cts.	\$	cts.	\$	cts.													
Footings Brought Forward,																											
W. J. Mills			NE 1/4 of NE 1/4			24 1/33 31 4/60	720							4295	PAID in Full	MAY 27 1916	4498		4295								
			NW 1/4 of NE 1/4																								
			SW 1/4 of NE 1/4			12.48 to R.R.																					
			SE 1/4 of NE 1/4			12.23 "																					
G. A. Schumacher			NE 1/4 of NW 1/4			40	196							2169	2nd Half Paid	OCT 24 1916											
			NW 1/4 of NW 1/4			40	196							1169	1st Half Paid	MAY 24 1916											
			SW 1/4 of NW 1/4			2.86 ac.	3714	108						1002	1st Half Paid	MAY 24 1916											
			SE 1/4 of NW 1/4			1.44 to R.R.	2851	137						817	2nd Half Paid	OCT 24 1916											
John O. Bonhus			NE 1/4 of SW 1/4			40	150							4157	1st Half Paid	MAY 24 1916											
J. Gustafson			NW 1/4 of SW 1/4			10.56 ac to R.R.	3944	175						1043	1st Half Paid	MAY 24 1916											
			SW 1/4 of SW 1/4			40	345							2057	2nd Half Paid	OCT 31 1916											
			SE 1/4 of SW 1/4			40	225							1342	1st Half Paid	MAY 31 1916											
Andrew Luedberg			NE 1/4 of SE 1/4			40	531							1974	PAID in Full	MAR 13 1916											
Edyth M. Thompson			NW 1/4 of SE 1/4			40	188							1121	2nd Half Paid	OCT 24 1916											
Carl B. Peterson			SW 1/4 of SE 1/4			40	180							1094	1st Half Paid	MAY 6 1916											
			SE 1/4 of SE 1/4			40	180							1071	2nd Half Paid	OCT 31 1916											
Footings Carried Forward,																											
						62509	3221																				

19211

Tax List of Real Property in the Town of May

Kimball-Storer Co., Minneapolis, Minn.—78055

IN WHOSE NAME ASSESSED	TO WHOM TRANSFERRED	Sold for Taxes	SUBDIVISION	Sec. or Lot	Town or Block	Rng.	No. of Acres		VALUATION	GENERAL TAXES				Ditch No.		
							Acres	100ths		State	State Sch'l	County	Town		Local Sch'l	Total
									Dollars	\$	cts.	\$	cts.	\$	cts.	
			Footings Brought Forward,													
Joe Simpson			NE 1/4 of NE 1/4				134	31	160	720						
"			NW 1/4 of NE 1/4													
"			SW 1/4 of NE 1/4													
"			SE 1/4 of NE 1/4													
Peter Peterson			NE 1/4 of NW 1/4				"	"	160	720						
"			NW 1/4 of NW 1/4													
"			SW 1/4 of NW 1/4													
"			SE 1/4 of NW 1/4													
"			NE 1/4 of SW 1/4				"	"	160	720						
"			NW 1/4 of SW 1/4													
"			SW 1/4 of SW 1/4													
"			SE 1/4 of SW 1/4													
Joe Simpson			NE 1/4 of SE 1/4				"	"	160	720						
"			NW 1/4 of SE 1/4													
"			SW 1/4 of SE 1/4													
"			SE 1/4 of SE 1/4													
			Footings Carried Forward,													
							640		2380							

Cass County, Minnesota, for Taxes of the Year 1915

SCHOOL DISTRICT		TOTAL TAXES	PAID	WHEN PAID	No. of Receipt	March Settlement	June Settlement	Penalty	November Settlement	Penalty	Collections to First Monday in January	Penalty	Delinquent on First Monday in January	REMARKS		
District No.	District No.															
Rate	Rate	\$	cts.	Month	Day	Year	\$	cts.	\$	cts.	\$	cts.	\$	cts.	\$	cts.
		4295		PAID in Full												
		4860		MAY 31												
		4295														
		4295		2nd Half Paid												
		6904		1st Half Paid												
		4492		OCT 31												
		6904		MAY 31												
		4295		2nd Half Paid												
		4860		1st Half Paid												
		4295		PAID in Full												
		4860		MAY 31												
		4295														
		17180														

Tax List of Real Property in the Town of May

Kimball Store Co., Minneapolis, Minn. 78055

IN WHOSE NAME ASSESSED	TO WHOM TRANSFERRED	Sold for Taxes	SUBDIVISION	Sec. or Lot	Town or Block	Rng.	No. of Acres		VALUATION	GENERAL TAXES			Dist. No.	
							Acres	100ths		State	Mills	State		Ditch
Footings Brought Forward,														
J. A. Lerber			NE 1/4 of NE 1/4				4	3431	15771	140				
"			NW 1/4 of NE 1/4							180				
"			SW 1/4 of NE 1/4							320				
"			SE 1/4 of NE 1/4							180				
Leta Smith			NE 1/4 of NW 1/4							131				
"			NW 1/4 of NW 1/4							180				
J. J. Blough			SW 1/4 of NW 1/4							169				
"			SE 1/4 of NW 1/4							198				
G. F. Cushman	John Durbin		NE 1/4 of SW 1/4						40	180				
"	"		NW 1/4 of SW 1/4						40	225				
Sydney E. Bennion			SW 1/4 of SW 1/4						40	156				
"			SE 1/4 of SW 1/4						40	157				
"			NE 1/4 of SE 1/4											
"			NW 1/4 of SE 1/4						160	673				
"			SW 1/4 of SE 1/4											
"			SE 1/4 of SE 1/4											
Footings Carried Forward,														
							62300	2889						

Cass County, Minnesota, for Taxes of the Year 1915

SCHOOL DISTRICT		TOTAL TAXES	PAID	WHEN PAID	No. of Receipt	March Settlement	June Settlement	Penalty	November Settlement	Penalty	Collections to First Monday in January	Penalty	Delinquent on First Monday in January	REMARKS
District No.	District Rate													
				Month Day Year		\$ cts.	\$ cts.	\$ cts.	\$ cts.	\$ cts.	\$ cts.	\$ cts.	\$ cts.	
		836		2nd Half Paid OCT 30 1916 1st Half Paid MAY 31 1916										
		1074		2nd Half Paid OCT 30 1916 1st Half Paid MAY 31 1916										
		1909		2nd Half Paid OCT 30 1916 1st Half Paid MAY 31 1916										
		1074		2nd Half Paid OCT 30 1916 1st Half Paid MAY 31 1916										
		4892		2nd Half Paid OCT 21 1916 1st Half Paid MAY 12 1916										
		781		2nd Half Paid OCT 21 1916 1st Half Paid MAY 12 1916										
		4074		2nd Half Paid OCT 21 1916 1st Half Paid MAY 12 1916										
		1068		Paid in Full MAY 12 1916										
		4180		Paid in Full MAY 12 1916										
				2nd Half Paid SEP 23 1916 1st Half Paid MAY 20 1916										
		1074		2nd Half Paid SEP 23 1916 1st Half Paid MAY 20 1916										
		1342		2nd Half Paid SEP 23 1916 1st Half Paid MAY 20 1916										
		930		Paid in Full MAY 30 1916										
		936		Paid in Full MAY 30 1916										
		1014		Paid in Full MAY 30 1916										
Footings Carried Forward,														
		1783	32											

Tax List of Real Property in the Town of May

Cass County, Minnesota, for Taxes of the Year 1915

IN WHOSE NAME ASSESSED	TO WHOM TRANSFERRED	Sold for Taxes	SUBDIVISION	Sec. or Lot	Town or Block	No. of Acres	GENERAL TAXES			S.P.H. Ditch No.	SCHOOL DISTRICT		TOTAL TAXES	PAID	WHEN PAID	No. of Receipt	March Settlement	June Settlement	Penalty	November Settlement	Penalty	Collections to First Monday in January	Penalty	Delinquent on First Monday in January	REMARKS		
							VALUATION	State	Mills		State	District														Rate	Rate
				Dollars			\$	cts.	\$	cts.	\$	cts.	\$	cts.	Month	Day	Year	\$	cts.	\$	cts.	\$	cts.	\$	cts.	\$	cts.
Footings Brought Forward,																											
Geo. W. Wasson			NE 1/4 of NE 1/4			7 1/4	1343	160	871	5	119	112															
			NW 1/4 of NE 1/4									112															
			SW 1/4 of NE 1/4									212															
			SE 1/4 of NE 1/4									212															
John Blake			Lots 10-11-12				138	16	622	37	09	519															
G. Jendall			NE 1/4 of NW 1/4 Lot 1				40		180	10	74	149															
			NW 1/4 of NW 1/4 " 2				40		180	10	74	149															
			SW 1/4 of NW 1/4 " 6				40		180	10	74	149															
			SE 1/4 of NW 1/4 " 7				48		180	10	74	149															
			" 3-4-5				134	48	545	32	50	504															
Geo. W. Wasson			NE 1/4 of SW 1/4 " 8				40		180	10	74	149															
L. E. Thorne			NW 1/4 of SW 1/4 " 9				40		180	10	74	149															
			SW 1/4 of SW 1/4 " 13				40		180	10	74	149															
Geo. W. Wasson			SE 1/4 of SW 1/4 " 14				40		180	10	74	149															
			NE 1/4 of SE 1/4				160		156	9	30	112															
			NW 1/4 of SE 1/4						165	9	84	112															
			SW 1/4 of SE 1/4						165	9	84	112															
			SE 1/4 of SE 1/4						180	10	74	112															
Footings Carried Forward,																											
						912	64		4120	24	574	311															

2nd Half Paid OCT 24 1916 8428
 1st Half Paid MAY 31 1916 5526
 2822 2821

4228 Paid in Full MAY 24 1916 4223
 4228

1223 Paid in Full MAY 8 1916
 1223 Paid in Full MAY 8 1916
 1223 Paid in Full MAY 8 1916 } 3205
 1223 Paid in Full MAY 8 1916 } 8646

754 Paid in Full MAY 8 1916 } 8428
 1223 2nd Half Paid OCT 24 1916 } 5526
 612 612

4223 Paid in Full MAY 22 1916 }
 1223 Paid in Full MAY 22 1916 } 2446
 1079 2nd Half Paid OCT 24 1916 } 8428
 1079 1st Half Paid MAY 31 1916 } 5526
 539 540

2nd Half Paid OCT 24 1916
 1042 1st Half Paid MAY 31 1916 } 8428
 1096 1st Half Paid MAY 31 1916 } 5526
 2210 2210

1096 1st Half Paid MAY 31 1916 }
 1186 1st Half Paid MAY 31 1916 }
 2768

Tax List of Real Property in the Town of May

Kimball Street Co., Minneapolis, Minn. - 70955

IN WHOSE NAME ASSESSED	TO WHOM TRANSFERRED	Sold for Taxes	SUBDIVISION	Sec. or Lot	Town or Block	No. of Acres	VALUATION	GENERAL TAXES				Ditch No.	
								State	Mills	State	Ditch		
							Dollars	\$	cts.	\$	cts.	\$	cts.
Footings Brought Forward,													
Ernest Peterson	S. N. Jacobs		NE 1/4 of NE 1/4	20	1343	140	180						
	Horace Huron		NW 1/4 of NE 1/4	"	"	40	180						
	"		SW 1/4 of NE 1/4	"	"	40	183						
	"		SE 1/4 of NE 1/4	"	"	40	189						
Nels Peterson			NE 1/4 of NW 1/4	"	"	160	203						
			NW 1/4 of NW 1/4	"	"		180						
			SW 1/4 of NW 1/4	"	"		180						
			SE 1/4 of NW 1/4	"	"		216						
Ernest Peterson	C. F. Walblom		NE 1/4 of SW 1/4	"	"	40	165						
	"		NW 1/4 of SW 1/4	"	"	40	165						
	"		SW 1/4 of SW 1/4	"	"	40	331						
Ernest Peterson			SE 1/4 of SW 1/4	"	"	40	180						
A. Sandusky	Clifford S. Green		NE 1/4 of SE 1/4	"	"	40	204						
Ernest Peterson			NW 1/4 of SE 1/4	"	"	40	180						
			SW 1/4 of SE 1/4	"	"	40	180						
A. Sandusky	Clifford S. Green		SE 1/4 of SE 1/4	"	"	40	201						
						640	3217	Footings Carried Forward,					

Cass County, Minnesota, for Taxes of the Year 1915

SCHOOL DISTRICT	TOTAL TAXES	PAID	WHEN PAID	No. of Receipt	March Settlement	June Settlement	Penalty	November Settlement	Penalty	Collections to First Monday in January	Penalty	Delinquent on First Monday in January	REMARKS		
														District No.	District Rate
District No.	Rate	Mills	District No.	Rate	Mills	\$	cts.	\$	cts.	\$	cts.	\$	cts.	\$	cts.
1074						6177									
						1074									
1074						6866									
1687						4697									
1127						4115									
1210						8139									
1074						3476									
1074															
1288															
984						6177									
984						8294									
974						6278									
1074						6278									
1074						6177									
1216						4688									
1074						6632									
1074															
1074						6177									
1198						4688									
						6632									
19186															

Tax List of Real Property in the Town of May

Cass County, Minnesota, for Taxes of the Year 1915

IN WHOSE NAME ASSESSED	TO WHOM TRANSFERRED	Sold for Taxes	SUBDIVISION	Sec. or Lot	Town or Block	Rng.	No. of Acres		VALUATION	GENERAL TAXES			Ditch No.	SCHOOL DISTRICT		TOTAL TAXES	PAID	WHEN PAID	No. of Receipt	March Settlement	June Settlement	Penalty	November Settlement	Penalty	Collections to First Monday in January	Penalty	Delinquent on First Monday in January	REMARKS						
							Acres	100ths		State	County	Local		State Sch'l	County														Local	No.	Rate	No.	Rate	
							Dollars	cts.		cts.	cts.	cts.		cts.	cts.														cts.	cts.	cts.	cts.	cts.	
Footings Brought Forward,																																		
C. Jacobs			NE 1/4 of NE 1/4				14	3431	100	720																								
"			NW 1/4 of NE 1/4																															
Harry Oberg			SW 1/4 of NE 1/4																															
"			SE 1/4 of NE 1/4																															
J. A. Ackerson			NE 1/4 of NW 1/4						40	198																								
W. M. Crocker			NW 1/4 of NW 1/4						40	192																								
"			SW 1/4 of NW 1/4						40	225																								
"			SE 1/4 of NW 1/4						40	236																								
H. R. Williams			NE 1/4 of SW 1/4						40	195																								
"			NW 1/4 of SW 1/4						40	195																								
"			SW 1/4 of SW 1/4						40	246																								
Emma L. Durbin	George F. Cashman		SE 1/4 of SW 1/4						40	180																								
Betsy Oberg	Leonard L. Scheer		NE 1/4 of SE 1/4						100	846																								
"	"		NW 1/4 of SE 1/4																															
"	"		SW 1/4 of SE 1/4																															
"	"		SE 1/4 of SE 1/4																															
Footings Carried Forward,																																		
							140			3283																								

2 1/2 NE 1/4 MAY 31 1916 5150

1 1/2 NE 1/4 MAY 31 1916 3923

1st Half Paid MAY 31 1916 5643

2nd Half Paid OCT 31 1916 9483

1st Half Paid MAY 31 1916 5182

2nd Half Paid OCT 31 1916 8208

1st Half Paid MAY 31 1916 3998

2nd Half Paid OCT 31 1916 8493

1st Half Paid MAY 31 1916 3953

2nd Half Paid OCT 31 1916 1897

1st Half Paid MAY 31 1916 5046

2nd Half Paid OCT 31 1916 1896

1st Half Paid MAY 31 1916 352

2nd Half Paid OCT 31 1916 5046

Tax List of Real Property in the Town of May

Kimball-Strayer Co., Minneapolis, Minn. 70055

IN WHOSE NAME ASSESSED	TO WHOM TRANSFERRED	Sold from Taxes	SUBDIVISION	Sec. or Lot	Town or Block	Rng.	No. of Acres Acres 100ths	VALUATION Dollars	GENERAL TAXES			Ditch No.		
									State	Mills	State			
									State Sch'l	County	Town	Local Sch'l	Total	State School Bonds
			Footings Brought Forward,											
J. Harris			NE 1/4 of NE 1/4	16	34	31	160	720						
"			NW 1/4 of NE 1/4											
"			SW 1/4 of NE 1/4											
"			SE 1/4 of NE 1/4											
Clem Thompson			NE 1/4 of NW 1/4	"	"	"	160	720						
"			NW 1/4 of NW 1/4											
"			SW 1/4 of NW 1/4											
"			SE 1/4 of NW 1/4											
"			NE 1/4 of SW 1/4	"	"	"	160	720						
"			NW 1/4 of SW 1/4											
"			SW 1/4 of SW 1/4											
"			SE 1/4 of SW 1/4											
J. Harris			NE 1/4 of SE 1/4	"	"	"	160	720						
"			NW 1/4 of SE 1/4											
"			SW 1/4 of SE 1/4											
"			SE 1/4 of SE 1/4											
			Footings Carried Forward,											
				640			2880							

Cass County, Minnesota, for Taxes of the Year 1915

SCHOOL DISTRICT		TOTAL TAXES	PAID	WHEN PAID	No. of Receipt	March Settlement	June Settlement	Penalty	November Settlement	Penalty	Collections to First Monday in January	Penalty	Delinquent on First Monday in January	REMARKS		
District No.	District No.															
Rate	Rate	\$	cts.	Month	Day	Year	\$	cts.	\$	cts.	\$	cts.	\$	cts.	\$	cts.
		4295		PAID In Full MAY 3 1916	3073		4295									
		4295		2nd Half Paid OCT 10 1916 1st Half Paid MAY 16 1916			11881 3623		4295		4295					
		4295		PAID In Full MAY 3 1916	3073		4295									
		17180														

Tax List of Real Property in the Town of May

Kimball Stone Co., Minneapolis, Minn.—73055

IN WHOSE NAME ASSESSED	TO WHOM TRANSFERRED	Sold for Taxes	SUBDIVISION	Sec. or Lot	Town or Block	No. of Acres	VALUATION	GENERAL TAXES			S.R.H. Ditch No.	
								State	Mills	Dolls.		
				Acres	100ths	Dollars	\$	cts.	\$	cts.	\$	cts.
Footings Brought Forward,												
A. L. Cole	Faye C. Andrews		NE 1/4 of NE 1/4	18	134	31	40	180	107 1/4		298	
Gull River Lumber Co.	"		NW 1/4 of NE 1/4	"	"	"	40	180	107 1/4		112	
George Green			SW 1/4 of NE 1/4	"	"	"	40	180	107 1/4		112	
"			SE 1/4 of NE 1/4	"	"	"	40	180	107 1/4		112	
A. L. Cole	Faye C. Andrews		Lots 3-4-5	"	"	"	140	632	376 9/16		225	
A. L. Cole	"		NE 1/4 of NW 1/4	"	"	"	40	180	107 1/4		149	
Faye C. Andrews			NW 1/4 of NW 1/4 Lot 2	"	"	"	40	180	107 1/4		149	
"			SW 1/4 of NW 1/4	"	"	"	40	180	107 1/4		149	
A. L. Cole			SE 1/4 of NW 1/4	"	"	"	40	180	107 1/4		149	
Butler-Wells-Co	Faye C. Andrews		"	"	"	"	40	180	107 1/4		149	
"			NE 1/4 of SW 1/4	"	"	"	40	180	107 1/4		149	
"			NW 1/4 of SW 1/4	"	"	"	40	180	107 1/4		149	
"			SW 1/4 of SW 1/4	"	"	"	40	180	107 1/4		149	
"			SE 1/4 of SW 1/4	"	"	"	40	180	107 1/4		149	
"			NE 1/4 of SE 1/4	"	"	"	40	180	107 1/4		149	
"			NW 1/4 of SE 1/4	"	"	"	40	180	107 1/4		149	
"			SW 1/4 of SE 1/4	"	"	"	40	180	107 1/4		149	
"			SE 1/4 of SE 1/4	"	"	"	40	180	107 1/4		149	
Geo. C. Green			Lots 1-7	"	"	"	80	360	214 1/4		112	
Footings Carried Forward,												
							940	410	2437	2646 9/16	2909	

Cass County, Minnesota, for Taxes of the Year 1915

SCHOOL DISTRICT	TOTAL TAXES	PAID	WHEN PAID	No. of Receipt	March Settlement	June Settlement	Penalty	November Settlement	Penalty	Collections to First Monday in January	Penalty	Delinquent on First Monday in January	REMARKS		
														District No.	District Rate
District No.	Rate	Mills	District No.	Rate	Mills	\$	cts.	\$	cts.	\$	cts.	\$	cts.	\$	cts.
	1372		Paid in Full	MAY 31 1916											
	1186		Paid in Full	MAY 31 1916						4953		2558			
	1186		2nd Half Paid	OCT 31 1916						9692		1260			
	1334		1st Half Paid	MAY 31 1916						6383					
	3994		Paid in Full	MAY 31 1916						4953		3994			
	1223		x 4881											1223	
	1223		Paid in Full	MAY 31 1916						4953		2446			
	1223		x 4881											1223	
	1223		2nd Half Paid	SEP 9 1916						3561		612			
	1223		1st Half Paid	MAY 16 1916						4953		1223			
	1223		Paid in Full	MAY 31 1916						4953		1223			
	1223		2nd Half Paid	SEP 9 1916						3561		612			
	1223		1st Half Paid	MAY 16 1916						4953		1223			
	1223		2nd Half Paid	SEP 9 1916						3561		612			
	1223		1st Half Paid	MAY 16 1916						4953		1223			
	1223		Paid in Full	MAY 31 1916						4953		1223			
	1223		2nd Half Paid	SEP 9 1916						3561		612			
	1223		1st Half Paid	MAY 16 1916						4953		1223			
	4743		2nd Half Paid	OCT 31 1916						9692		2372			
	1186		2nd Half Paid	SEP 9 1916						7532		593			
	1186		1st Half Paid	MAY 16 1916						3561		1074			
	2147		2nd Half Paid	OCT 31 1916						8383					
	2147		1st Half Paid	MAY 31 1916						8383					

Tax List of Real Property in the Town of May

Cass County, Minnesota, for Taxes of the Year 1915

Kimball-Storey Co., Minneapolis, Minn. - 78055

IN WHOSE NAME ASSESSED	TO WHOM TRANSFERRED	Sold for Taxes	SUBDIVISION	Sec. or Lot	Town or Block	No. of Acres	VALUATION	GENERAL TAXES			S. R. H. Dist. No.	SCHOOL DISTRICT		TOTAL TAXES	PAID	WHEN PAID	No. of Receipt	March Settlement	June Settlement	Penalty	November Settlement	Penalty	Collections to First Monday in January	Penalty	Delinquent on First Monday in January	REMARKS										
								State	County	Local Sch.		District No.	District Rate																							
Footings Brought Forward,																																				
J. R. Johnson			NE 1/4 of NE 1/4			32.13431	160	916	54664	87			5812	PAID in Full	MAY 23 1916	4068		5812																		
"			NW 1/4 of NE 1/4							87																										
"			SW 1/4 of NE 1/4							87																										
"			SE 1/4 of NE 1/4							87																										
H. W. Converse			NE 1/4 of NW 1/4				160	1020	42084	112			6532	2nd Half Paid	OCT 24 1916	8396		3266		3266																
"			NW 1/4 of NW 1/4							112				1st Half Paid	MAY 31 1916	4806																				
"			SW 1/4 of NW 1/4							112																										
"			SE 1/4 of NW 1/4							112																										
J. Harris			NE 1/4 of SW 1/4				160	826	4927	87			5375	PAID in Full	MAY 3 1916	3075		5375																		
"			NW 1/4 of SW 1/4							112																										
"			SW 1/4 of SW 1/4							112																										
"			SE 1/4 of SW 1/4							112																										
Rosale Adams			NE 1/4 of SE 1/4				160	961	5732	87			6080	2nd Half Paid	SEP 21 1916	7600		3040		3040																
"			NW 1/4 of SE 1/4							87				1st Half Paid	MAY 31 1916	5117																				
"			SW 1/4 of SE 1/4							87																										
"			SE 1/4 of SE 1/4							87																										
Footings Carried Forward,																																				
						640	3723	22207		1592			23799																							

Tax List of Real Property in the Town of May

Kimball-Store Co., Minneapolis, Minn.—78688

IN WHOSE NAME ASSESSED	TO WHOM TRANSFERRED	Sold for Taxes	SUBDIVISION	No. of Acres	VALUATION	GENERAL TAXES			Ditch No.			
						State	County	Local Sch.				
				Sec. or Lot	Town or Block	Range	Acres 100ths	Mills	Dollars	cts.	cts.	cts.
Footings Brought Forward,												
Weyerhaeuser et al			NE 1/4 of NE 1/4		35	34	36	40	180			
Hugo Lindahl			NW 1/4 of NE 1/4		40				180			
Weyerhaeuser et al			SW 1/4 of NE 1/4		40				180			
"			SE 1/4 of NE 1/4		40				180			
Hugo Lindahl			NE 1/4 of NW 1/4		40				180			
P. M. Olson			NW 1/4 of NW 1/4		40				270			
John M. Emmett			SW 1/4 of NW 1/4		40				210			
"			SE 1/4 of NW 1/4		40				169			
"			NE 1/4 of SW 1/4		100				169			
"			NW 1/4 of SW 1/4						169			
"			SW 1/4 of SW 1/4						169			
"			SE 1/4 of SW 1/4						169			
Weyerhaeuser et al			NE 1/4 of SE 1/4		40				169			
Robert Ellingboe			NW 1/4 of SE 1/4		40				169			
Weyerhaeuser et al			SW 1/4 of SE 1/4		40				169			
"			SE 1/4 of SE 1/4		40				169			
				640			2901					

Cass County, Minnesota, for Taxes of the Year 1915

SCHOOL DISTRICT	TOTAL TAXES	PAID	WHEN PAID	No. of Receipt	March Settlement	June Settlement	Penalty	November Settlement	Penalty	Collections to First Monday in January	Penalty	Delinquent on First Monday in January	REMARKS	
														District No.
			2nd Half Paid OCT 2 - 1916	7747										
	1074		1st Half Paid MAY 13 1916	3433			337		537					
	12074		Paid in Full APR 15 1916	2670			1074							
	1074		2nd Half Paid OCT 2 - 1916	7747										
	1074		1st Half Paid MAY 13 1916	3433										
	1074		2nd Half Paid OCT 2 - 1916	3433			4074		1074					
	1074		1st Half Paid MAY 13 1916											
	1074		Paid in Full APR 15 1916	2670			1074							
	1161		2nd Half Paid OCT 2 6 1916	8589										
	1253		1st Half Paid MAY 3 1916	5741			1432		1432					
	1008		2nd Half Paid OCT 2 6 1916	5741										
	1008		1st Half Paid MAY 3 1916	4906								Paid subsequent to Cert. No. 3014		
	1008	✓		5418								1159 Paid subsequent to Cert. No. 3329		
	1008	✓		5419								1159 Paid subsequent to Cert. No. 3330		
	1008	✓		5420								1159 Paid subsequent to Cert. No. 3331		
	1008	✓		5421								1159 Paid subsequent to Cert. No. 3332		
			2nd Half Paid OCT 2 - 1916	7747										
	1008		1st Half Paid MAY 13 1916	3433			504		504					
	1008			4820								Paid subsequent to Cert. No. 3332		
	1008		2nd Half Paid OCT 2 - 1916	7747										
	1008		1st Half Paid MAY 13 1916	3433			1008		1008					
	1008		2nd Half Paid OCT 2 - 1916	3433										
	1008		1st Half Paid MAY 13 1916											
				17306										

