

ASSESSMENT BOOKS

1928

Town of May

THE FRITZ-CROSS CO., ST. CLOUD, MI

INDEX TO SECTIONS

SECTION PAGE

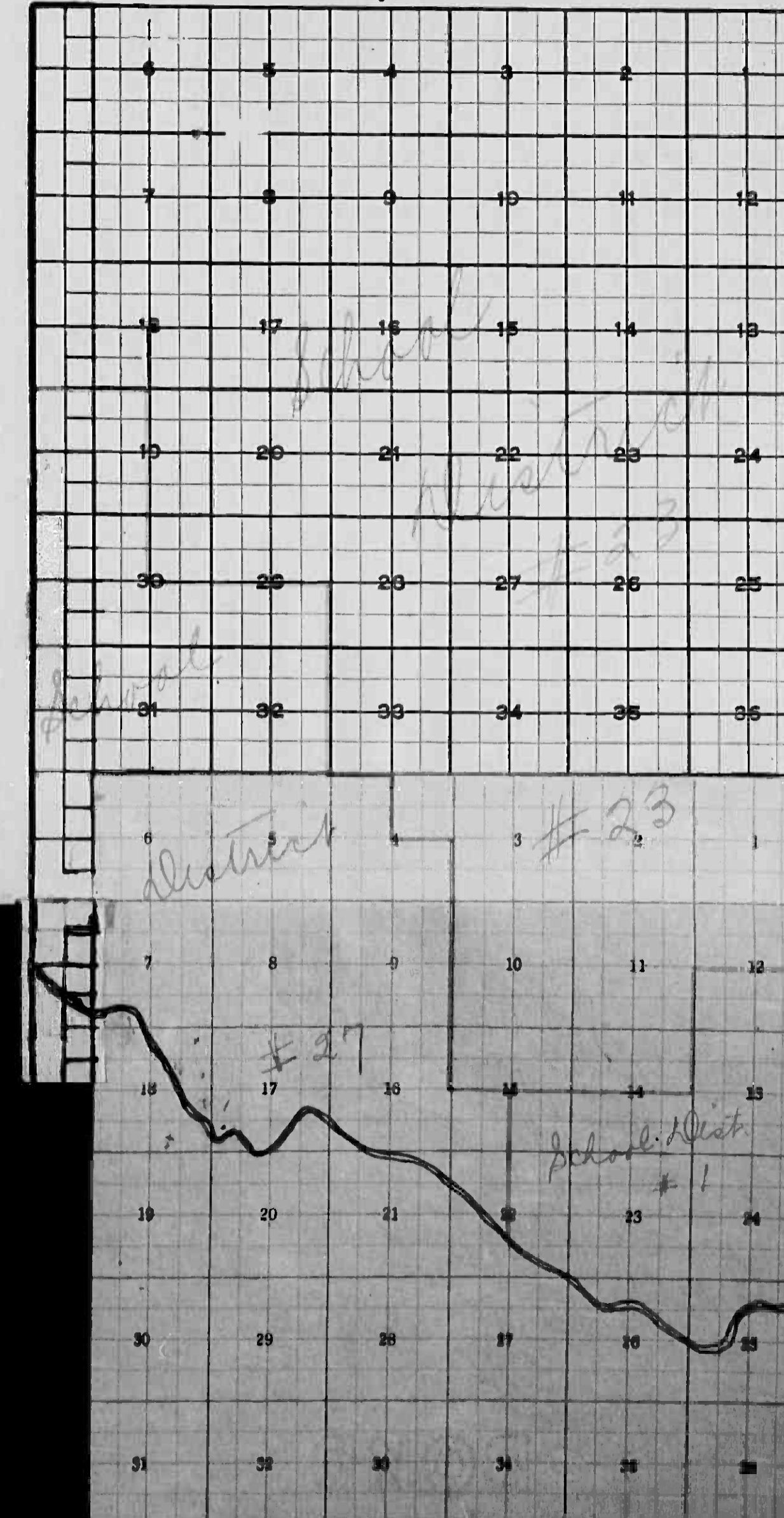
Section 1	
" 2	
" 3	
" 4	
" 5	
" 6	
" 7	
" 8	
" 9	
" 10	
" 11	
" 12	
" 13	
" 14	
" 15	
" 16	
" 17	
" 18	
" 19	
" 20	
" 21	
" 22	
" 23	
" 24	
" 25	
" 26	
" 27	
" 28	
" 29	
" 30	
" 31	
" 32	
" 33	
" 34	
" 35	
" 36	

For Convenience of Auditor in Showing Boundaries of School Districts.

Township No. 134^{part} Range No. 31 Mer. P. M.

7.134

7.133



Assessor's Return of Exempt Real Property in the _____ of _____ County of _____, Minnesota, for the Year 1928.

NAMES OF PROPERTY OWNERS	DESCRIPTION OF PROPERTY	Sec. or Lot	Town or Block	No. of Acres	FOR WHAT PURPOSE USED	ASSESSOR'S VALUATIONS				REMARKS	
						True and Full Value of Land exclusive of Structures and Improvements	STRUCTURES AND IMPROVEMENTS		Total True and Full Value of Land including all Structures, Improvements and Machinery		Assessed Value of Land including all Structures, Improvements and Machinery
							True and Full Value of Buildings and Other Structures	True and Full Value of Machinery permanently attached to Real Estate			
Dollars	Dollars	Dollars	Dollars	Dollars							
School Dist 23	School House	14	34 31	1 00	School	15	300	315	105		
" " "	" "	15	34 31	1 00	School	15	240	255	85		
School Dist 23	" "	24	34 31		"	12	240	252	84		
Church	Full Gospel Assembly	12	34 31		Church		300	300	100		
District No 23	School house	2	33 31	1 00	School	15	240	255	85		
" " "	" "	6	34 31	1 00	School	15	240	255	85		
" " "	" "	2	34 31	1 00	School	15	240	255	85		
" " "	" "	27	34 30	1 00	"	15	240	255	85		

Assessor's Return of Exempt Real Property in the _____ of _____ County of _____, Minnesota, for the Year 1928.

NAMES OF PROPERTY OWNERS	DESCRIPTION OF PROPERTY	Sec. or Lot	Town or Block	No. of Acres	FOR WHAT PURPOSE USED	ASSESSOR'S VALUATIONS				REMARKS	
						True and Full Value of Land exclusive of Structures and Improvements	STRUCTURES AND IMPROVEMENTS		Total True and Full Value of Land including all Structures, Improvements and Machinery		Assessed Value of Land including all Structures, Improvements and Machinery
							True and Full Value of Buildings and Other Structures	True and Full Value of Machinery permanently attached to Real Estate			
Dollars	Dollars	Dollars	Dollars	Dollars							

Personal Property Assessment for the

Of Property Omitted from the Assessment Book of 1927 or former years, and assessed

this year in accordance with the provisions of Chapter 11, General Statutes, 1913.

County of

State of Minnesota for the Year 1928

MADE IN U.S.A. BY THE WEST COAST CO.

NAMES OF PROPERTY OWNERS
To be entered in Alphabetical Order and
the Post Office Address on the line
Immediately below the name
(Care should be taken to make every
NAME and FIGURE plain and distinct.)

Number of Members of
Household Assessed

No. of R. F. D.

No. of School District

Value of
Tangible
Property
Dollars

Total
Assessed
Value as
Equalized
by the
State Tax
Commission
Dollars

Total
Assessed
Value as
Equalized
by the
County
Board
Dollars

Total
Assessed
Value as
Equalized
by the
Local
Board of
Review
Dollars

Assessed
Value of all
Property
Included in
the Items
as Returned
by Assessor
Dollars

CLASS 1—Assessed at 50% of
True and Full Value

CLASS 2—Assessed at 25% of
True and Full Value

Mined Iron Ore
No. Tons Assessed Value Dollars
Dollars

Household
furniture, stoves,
household
utensils, and
wearing apparel
of members
of the family
Assessed
Value
Dollars

Rugs
and
Carpets
Assessed
Value
Dollars

Books,
Pictures,
Engravings,
and
Works of
Art
Assessed
Value
Dollars

Writing
Machines,
Sewing
Machines,
stamps and
similar appli-
ances used in
the home
Assessed
Value
Dollars

Watches
and
Clocks
Assessed
Value
Dollars

Jewelry,
Diamonds,
Gold and
Silver
Plate and
Printed Ware
Assessed
Value
Dollars

Plains
Assessed
Value
Dollars

Photographs,
Other
Musical In-
struments and
Radio
Units
Assessed
Value
Dollars

All Other Per-
sonal Property
Used by
Owner for
Personal and
Domestic Pur-
poses or Family
Entertainment
Assessed
Value
Dollars

Total
Assessed
Value
Class 2
Dollars

Total True
and
Full Value
Class 2
Dollars

CLASS 3—Assessed at 25% of
True and Full Value

11—HORSES, MULES AND ASSES

A
Under
One Year
No. Assessed
Value
Dollars

B
One Year
Old and
under
Two Years
No. Assessed
Value
Dollars

C
Two Years
Old and
under
Three Years
No. Assessed
Value
Dollars

D
Three Years
Old and
under
Sixteen
Years
No. Assessed
Value
Dollars

E
Sixteen
Years Old
and Over
No. Assessed
Value
Dollars

F
Stallions,
Five Bred
Mares
and Race
Horses
No. Assessed
Value
Dollars

G
Pure Bred
Cattle
under
One Year
No. Assessed
Value
Dollars

H
Grade Cattle
under
One Year
No. Assessed
Value
Dollars

I
Pure Bred
Cattle One
Year Old
and under
Two Years
No. Assessed
Value
Dollars

J
Grade Cattle
One Year
Old and
under
Two Years
No. Assessed
Value
Dollars

K
Pure Bred
Cattle Two
Years Old
and under
Three Years
No. Assessed
Value
Dollars

L
Grade Cattle
Two Years
Old and
under
Three Years
No. Assessed
Value
Dollars

M
Pure Bred
Cows
No. Assessed
Value
Dollars

N
Grade Cows
No. Assessed
Value
Dollars

O
Pure Bred
Bulls
No. Assessed
Value
Dollars

P
Grade Bulls
No. Assessed
Value
Dollars

Q
All Other
Cattle
Three Years
Old
and over
No. Assessed
Value
Dollars

R
Under Three
Months Old
No. Assessed
Value
Dollars

S
Three Months
Old and
over
No. Assessed
Value
Dollars

T
Under Three
Months
No. Assessed
Value
Dollars

U
Three Months
old and
over
No. Assessed
Value
Dollars

V
All other
Cattle
Three Years
Old
and over
No. Assessed
Value
Dollars

W
Under Three
Months Old
No. Assessed
Value
Dollars

X
Three Months
Old and
over
No. Assessed
Value
Dollars

Y
Under Three
Months
No. Assessed
Value
Dollars

Z
Three Months
old and
over
No. Assessed
Value
Dollars

AA
All other
Cattle
Three Years
Old
and over
No. Assessed
Value
Dollars

AB
Under Three
Months Old
No. Assessed
Value
Dollars

AC
Three Months
Old and
over
No. Assessed
Value
Dollars

AD
Under Three
Months
No. Assessed
Value
Dollars

AE
Three Months
old and
over
No. Assessed
Value
Dollars

AF
All other
Cattle
Three Years
Old
and over
No. Assessed
Value
Dollars

AG
Under Three
Months Old
No. Assessed
Value
Dollars

AH
Three Months
Old and
over
No. Assessed
Value
Dollars

AJ
Under Three
Months
No. Assessed
Value
Dollars

AK
Three Months
old and
over
No. Assessed
Value
Dollars

AL
All other
Cattle
Three Years
Old
and over
No. Assessed
Value
Dollars

AM
Under Three
Months Old
No. Assessed
Value
Dollars

AN
Three Months
Old and
over
No. Assessed
Value
Dollars

AO
Under Three
Months
No. Assessed
Value
Dollars

AP
Three Months
old and
over
No. Assessed
Value
Dollars

AQ
All other
Cattle
Three Years
Old
and over
No. Assessed
Value
Dollars

AR
Under Three
Months Old
No. Assessed
Value
Dollars

AS
Three Months
Old and
over
No. Assessed
Value
Dollars

AT
Under Three
Months
No. Assessed
Value
Dollars

AU
Three Months
old and
over
No. Assessed
Value
Dollars

AV
All other
Cattle
Three Years
Old
and over
No. Assessed
Value
Dollars

AW
Under Three
Months Old
No. Assessed
Value
Dollars

AX
Three Months
Old and
over
No. Assessed
Value
Dollars

AY
Under Three
Months
No. Assessed
Value
Dollars

AZ
Three Months
old and
over
No. Assessed
Value
Dollars

BA
All other
Cattle
Three Years
Old
and over
No. Assessed
Value
Dollars

BB
Under Three
Months Old
No. Assessed
Value
Dollars

BC
Three Months
Old and
over
No. Assessed
Value
Dollars

BD
Under Three
Months
No. Assessed
Value
Dollars

BE
Three Months
old and
over
No. Assessed
Value
Dollars

BF
All other
Cattle
Three Years
Old
and over
No. Assessed
Value
Dollars

BG
Under Three
Months Old
No. Assessed
Value
Dollars

BH
Three Months
Old and
over
No. Assessed
Value
Dollars

BI
Under Three
Months
No. Assessed
Value
Dollars

BJ
Three Months
old and
over
No. Assessed
Value
Dollars

BK
All other
Cattle
Three Years
Old
and over
No. Assessed
Value
Dollars

BL
Under Three
Months Old
No. Assessed
Value
Dollars

BM
Three Months
Old and
over
No. Assessed
Value
Dollars

BN
Under Three
Months
No. Assessed
Value
Dollars

BO
Three Months
old and
over
No. Assessed
Value
Dollars

BP
All other
Cattle
Three Years
Old
and over
No. Assessed
Value
Dollars

BQ
Under Three
Months Old
No. Assessed
Value
Dollars

BR
Three Months
Old and
over
No. Assessed
Value
Dollars

BS
Under Three
Months
No. Assessed
Value
Dollars

BT
Three Months
old and
over
No. Assessed
Value
Dollars

BU
All other
Cattle
Three Years
Old
and over
No. Assessed
Value
Dollars

BV
Under Three
Months Old
No. Assessed
Value
Dollars

BW
Three Months
Old and
over
No. Assessed
Value
Dollars

BX
Under Three
Months
No. Assessed
Value
Dollars

BY
Three Months
old and
over
No. Assessed
Value
Dollars

BZ
All other
Cattle
Three Years
Old
and over
No. Assessed
Value
Dollars

CA
Under Three
Months Old
No. Assessed
Value
Dollars

CB
Three Months
Old and
over
No. Assessed
Value
Dollars

CC
Under Three
Months
No. Assessed
Value
Dollars

CD
Three Months
old and
over
No. Assessed
Value
Dollars

CE
All other
Cattle
Three Years
Old
and over
No. Assessed
Value
Dollars

CF
Under Three
Months Old
No. Assessed
Value
Dollars

CG
Three Months
Old and
over
No. Assessed
Value
Dollars

CH
Under Three
Months
No. Assessed
Value
Dollars

CI
Three Months
old and
over
No. Assessed
Value
Dollars

CJ
All other
Cattle
Three Years
Old
and over
No. Assessed
Value
Dollars

CK
Under Three
Months Old
No. Assessed
Value
Dollars

CL
Three Months
Old and
over
No. Assessed
Value
Dollars

CM
Under Three
Months
No. Assessed
Value
Dollars

CN
Three Months
old and
over
No. Assessed
Value
Dollars

CO
All other
Cattle
Three Years
Old
and over
No. Assessed
Value
Dollars

CP
Under Three
Months Old
No. Assessed
Value
Dollars

CQ
Three Months
Old and
over
No. Assessed
Value
Dollars

CR
Under Three
Months
No. Assessed
Value
Dollars

CS
Three Months
old and
over
No. Assessed
Value
Dollars

CT
All other
Cattle
Three Years
Old
and over
No. Assessed
Value
Dollars

CU
Under Three
Months Old
No. Assessed
Value
Dollars

CV
Three Months
Old and
over
No. Assessed
Value
Dollars

CW
Under Three
Months
No. Assessed
Value
Dollars

CX
Three Months
old and
over
No. Assessed
Value
Dollars

CY
All other
Cattle
Three Years
Old
and over
No. Assessed
Value
Dollars

CA
Under Three
Months Old
No. Assessed
Value
Dollars

CB
Three Months
Old and
over
No. Assessed
Value
Dollars

CC
Under Three
Months
No. Assessed
Value
Dollars

CD
Three Months
old and
over
No. Assessed
Value
Dollars

CE
All other
Cattle
Three Years
Old
and over
No. Assessed
Value
Dollars

CF
Under Three
Months Old
No. Assessed
Value
Dollars

CG
Three Months
Old and
over
No. Assessed
Value
Dollars

CH
Under Three
Months
No. Assessed
Value
Dollars

CI
Three Months
old and
over
No. Assessed
Value
Dollars

CJ
All other
Cattle
Three Years
Old
and over
No. Assessed
Value
Dollars

CK
Under Three
Months Old
No. Assessed
Value
Dollars

CL
Three Months
Old and
over
No. Assessed
Value
Dollars

CM
Under Three
Months
No. Assessed
Value
Dollars

CN
Three Months
old and
over
No. Assessed
Value
Dollars

CO
All other
Cattle
Three Years
Old
and over
No. Assessed
Value
Dollars

CP
Under Three
Months Old
No. Assessed
Value
Dollars

CQ
Three Months
Old and
over
No. Assessed
Value
Dollars

CR
Under Three
Months
No. Assessed
Value
Dollars

CS
Three Months
old and
over
No. Assessed
Value
Dollars

CT
All other
Cattle
Three Years
Old
and over
No. Assessed
Value
Dollars

CU
Under Three
Months Old
No. Assessed
Value
Dollars

CV
Three Months
Old and
over
No. Assessed
Value
Dollars

CW
Under Three
Months
No. Assessed
Value
Dollars

CX
Three Months
old and
over
No. Assessed
Value
Dollars

CY
All other
Cattle
Three Years
Old
and over
No. Assessed
Value
Dollars

CA
Under Three
Months Old
No. Assessed
Value
Dollars

CB
Three Months
Old and
over
No. Assessed
Value
Dollars

CC
Under Three
Months
No. Assessed
Value
Dollars

CD
Three Months
old and
over
No. Assessed
Value
Dollars

CE
All other
Cattle
Three Years
Old
and over
No. Assessed
Value
Dollars

CF
Under Three
Months Old
No. Assessed
Value
Dollars

CG
Three Months
Old and
over
No. Assessed
Value
Dollars

CH
Under Three
Months
No. Assessed
Value
Dollars

CI
Three Months
old and
over
No. Assessed
Value
Dollars

CJ
All other
Cattle
Three Years
Old
and over
No. Assessed
Value
Dollars

CK
Under Three
Months Old
No. Assessed
Value
Dollars

CL
Three Months
Old and
over
No. Assessed
Value
Dollars

CM
Under Three
Months
No. Assessed
Value
Dollars

CN
Three Months
old and
over
No. Assessed
Value
Dollars

CO
All other
Cattle
Three Years
Old
and over
No. Assessed
Value
Dollars

CP
Under Three
Months Old
No. Assessed
Value
Dollars

CQ
Three Months
Old and
over
No. Assessed
Value
Dollars

CR
Under Three
Months
No. Assessed
Value
Dollars

CS
Three Months
old and
over
No. Assessed
Value
Dollars

CT
All other
Cattle
Three Years
Old
and over
No. Assessed
Value
Dollars

CU
Under Three
Months Old
No. Assessed
Value
Dollars

CV
Three Months
Old and
over
No. Assessed
Value
Dollars

CW
Under Three
Months
No. Assessed
Value
Dollars

CX
Three Months
old and
over
No. Assessed
Value
Dollars

CY
All other
Cattle
Three Years
Old
and over
No. Assessed
Value
Dollars

CA
Under Three
Months Old
No. Assessed
Value
Dollars

CB
Three Months
Old and
over
No. Assessed
Value
Dollars

CC
Under Three
Months
No. Assessed
Value
Dollars

CD
Three Months
old and
over
No. Assessed
Value
Dollars

CE
All other
Cattle
Three Years
Old
and over
No. Assessed
Value
Dollars

CF
Under Three
Months Old
No. Assessed
Value
Dollars

CG
Three Months
Old and
over
No. Assessed
Value
Dollars

CH
Under Three
Months
No. Assessed
Value
Dollars

CI
Three Months
old and
over
No. Assessed
Value
Dollars

CJ
All other
Cattle
Three Years
Old
and over
No. Assessed
Value
Dollars

CK
Under Three
Months Old
No. Assessed
Value
Dollars

CL
Three Months
Old and
over
No. Assessed
Value
Dollars

CM
Under Three
Months
No. Assessed
Value
Dollars

CN
Three Months
old and
over
No. Assessed
Value
Dollars

CO
All other
Cattle
Three Years
Old
and over
No. Assessed
Value
Dollars

CP
Under Three
Months Old
No. Assessed
Value
Dollars

CQ
Three Months
Old and
over
No. Assessed
Value
Dollars

CR
Under Three
Months
No. Assessed
Value
Dollars

CS
Three Months
old and
over
No. Assessed
Value
Dollars

Assessor's Return of Taxable Real Property in the Town of May
 Unplatted Real Estate—Assessed at 33 1-3 per cent of True and Full Value.

RECEIVED
 MAY 1928
 COMPTROLLER GENERAL

for the Year 1928. 1

NAME OF OWNER	No. of School Dist.	DESCRIPTION					ASSESSOR'S VALUATIONS				EQUALIZED VALUATIONS			
		SUBDIVISION	Sec. or Lot	Twp. or Block	Range	Number of Acres	True and Full Value of Lands Exclusive of Structures and Improvements	STRUCTURES AND IMPROVEMENTS True and Full Value of Buildings and Other Structures	True and Full Value of Machinery Permanently Attached to Real Estate	Total True and Full Value of Lands Including all Structures, Improvements and Machinery	Assessed Value of Lands Including all Structures, Improvements and Machinery	Assessed Value as Equalized by Board of Review	Assessed Value as Equalized by the County Board	Assessed Value as Equalized by the Minnesota Tax Commission
St. Paul & Chicago Ry. Co.		NE $\frac{1}{4}$ of NE $\frac{1}{4}$	1	133	31	40	547			547	160			182
Mr. Mary E. Waldron		NW $\frac{1}{4}$ of NE $\frac{1}{4}$				40	547			547	157			179
"		SW $\frac{1}{4}$ of NE $\frac{1}{4}$				40	547			547	160			182
St. Paul & Chicago Ry. Co.		SE $\frac{1}{4}$ of NE $\frac{1}{4}$				40	547			547	157			179
Mr. Mary E. Waldron		NE $\frac{1}{4}$ of NW $\frac{1}{4}$				40	547			547	160			182
"		NW $\frac{1}{4}$ of NW $\frac{1}{4}$				40	547			547	160			182
"		SW $\frac{1}{4}$ of NW $\frac{1}{4}$				40	547			547	160			182
"		SE $\frac{1}{4}$ of NW $\frac{1}{4}$				40	547			547	160			182
"		NE $\frac{1}{4}$ of SW $\frac{1}{4}$				40	547			547	160			182
"		NW $\frac{1}{4}$ of SW $\frac{1}{4}$				40	547			547	160			182
"		SW $\frac{1}{4}$ of SW $\frac{1}{4}$				40	547			547	160			182
"		SE $\frac{1}{4}$ of SW $\frac{1}{4}$				40	513			513	150			171
"		NE $\frac{1}{4}$ of SE $\frac{1}{4}$				40	513			513	150			171
"		NW $\frac{1}{4}$ of SE $\frac{1}{4}$				40	547			547	160			182
"		SW $\frac{1}{4}$ of SE $\frac{1}{4}$				40	547			547	160			182
"		SE $\frac{1}{4}$ of SE $\frac{1}{4}$				40	513			513	150			171
						640	8630			8630	2521			2973

Assessor's Return of Taxable Real Property in the Town of May, County of Cass, Minn., for the Year 1928.

Unplatted Real Estate—Assessed at 33 1/3 per cent of True and Full Value.

Table with columns: NAME OF OWNER, No. of School Dist., DESCRIPTION, SUBDIVISION, Sec. or Lot, Twp. or Block, Range, Number of Acres, ASSESSOR'S VALUATIONS (True and Full Value of Lands, Structures and Improvements, Total True and Full Value), EQUALIZED VALUATIONS (Assessed Value as Equalized by Board of Review, Assessed Value as Equalized by the County Board, Assessed Value as Equalized by the Minnesota Tax Commission).

Assessor's Return of Taxable Real Property in the Town of May, County of Cass, Minn., for the Year 1928.

Unplatted Real Estate—Assessed at 33 1/3 per cent of True and Full Value.

Table with columns: NAME OF OWNER, No. of School Dist., DESCRIPTION, SUBDIVISION, Sec. or Lot, Twp. or Block, Range, Number of Acres, ASSESSOR'S VALUATIONS (True and Full Value of Lands, Structures and Improvements, Total True and Full Value), EQUALIZED VALUATIONS (Assessed Value as Equalized by Board of Review, Assessed Value as Equalized by the County Board, Assessed Value as Equalized by the Minnesota Tax Commission).

Assessor's Return of Taxable Real Property in the Town of May, County of Cass, Minn., for the Year 1928.

Unplatted Real Estate—Assessed at 33 1-3 per cent of True and Full Value.

Table with columns: NAME OF OWNER, No. of School Dist., DESCRIPTION, SUBDIVISION, Sec. or Lot, Twp. or Block, Range, Number of Acres, ASSESSOR'S VALUATIONS (True and Full Value of Land, Structures and Improvements, Total True and Full Value), ASSESSED VALUE OF LAND INCLUDING ALL STRUCTURES, IMPROVEMENTS AND MACHINERY, EQUALIZED VALUATIONS (Assessed Value as Equalized by Board of Review, Assessed Value as Equalized by the County Board, Assessed Value as Equalized by the Minnesota Tax Commission).

Assessor's Return of Taxable Real Property in the Town of May, County of Cass, Minn., for the Year 1928.

Unplatted Real Estate—Assessed at 33 1-3 per cent of True and Full Value.

Table with columns: NAME OF OWNER, No. of School Dist., DESCRIPTION, SUBDIVISION, Sec. or Lot, Twp. or Block, Range, Number of Acres, ASSESSOR'S VALUATIONS (True and Full Value of Land, Structures and Improvements, Total True and Full Value), ASSESSED VALUE OF LAND INCLUDING ALL STRUCTURES, IMPROVEMENTS AND MACHINERY, EQUALIZED VALUATIONS (Assessed Value as Equalized by Board of Review, Assessed Value as Equalized by the County Board, Assessed Value as Equalized by the Minnesota Tax Commission).

Assessor's Return of Taxable Real Property in the Town of May, County of Cass, Minn., for the Year 1928.

Unplatted Real Estate—Assessed at 33 1-3 per cent of True and Full Value.

NAME OF OWNER	No. of School Dist.	DESCRIPTION	ASSESSOR'S VALUATIONS						EQUALIZED VALUATIONS						
			SUBDIVISION	Sec. or Lot	Twp. or Block	Range	Number of Acres		True and Full Value of Land Exclusive of Structures and Improvements Dollars	STRUCTURES AND IMPROVEMENTS		Assessed Value as Equalized by Board of Review Dollars	Assessed Value as Equalized by the County Board Dollars	Assessed Value as Equalized by the Minnesota Tax Commission Dollars	
							Acres	100ths		True and Full Value of Buildings and Other Structures Dollars	True and Full Value of Machinery Permanently Attached to Real Estate Dollars				Total True and Full Value of Land Including all Structures, Improvements and Machinery Dollars
Jay Cole Andrews		NE 1/4 of NE 1/4		6	133	31	36	75	547	480	160	182			
"		NW 1/4 of NE 1/4					37	34	480	547	160	182			
"		SW 1/4 of NE 1/4					40		480	547	165	188			
"		SE 1/4 of NE 1/4					40		480	547	165	188			
Peoples St. Bk., Molloy		lots 7 + 8					75	94	997	819	107	104	305		
Geo. Stepha		lot 3					37	94	567	99	189	347			
"		" 4					38	54	480	547	160	182			
Peoples St. Bk., Motley		" 9					40		696	558	63	186			
"		" 10					40		646	567	64	189			
John Stillman Hubbard		lots 13 + 14					76	18	1043	915	305	348			
James G. Reid		lot 11					40		547	480	160	182			
"		" 12					40		480	547	165	188			
"		" 17					40		480	547	160	182			
"		" 18					40		480	547	160	182			
Lena Schmit		" 6					37	72	390	342	114	130			
Jay Cole Andrews		NE 1/4 of SE 1/4					40		480	547	165	188			
"		NW 1/4 of SE 1/4					40		480	547	165	188			
Augusta Abrahamson		SW 1/4 of SE 1/4					40		480	547	160	182			
Caro. E. Barnes		SE 1/4 of SE 1/4					40		480	547	160	182			
Lena Schmit		lots 5					39	13	521	597	177	192			
E. A. Gustafson		lots 15 + 16					96	42	1385	1077	422	483			
							935	95	11438	593	13628	4540			

Assessor's Return of Taxable Real Property in the Town of May, County of Cass, Minn., for the Year 1928.

Unplatted Real Estate—Assessed at 33 1-3 per cent of True and Full Value.

NAME OF OWNER	No. of School Dist.	DESCRIPTION	ASSESSOR'S VALUATIONS						EQUALIZED VALUATIONS						
			SUBDIVISION	Sec. or Lot	Twp. or Block	Range	Number of Acres		True and Full Value of Land Exclusive of Structures and Improvements Dollars	STRUCTURES AND IMPROVEMENTS		Assessed Value as Equalized by Board of Review Dollars	Assessed Value as Equalized by the County Board Dollars	Assessed Value as Equalized by the Minnesota Tax Commission Dollars	
							Acres	100ths		True and Full Value of Buildings and Other Structures Dollars	True and Full Value of Machinery Permanently Attached to Real Estate Dollars				Total True and Full Value of Land Including all Structures, Improvements and Machinery Dollars
Veronica Ryan		NE 1/4 of NE 1/4		7	133	31	30		547	480	160	182			
"		NW 1/4 of NE 1/4					40		480	547	160	182			
"		SW 1/4 of NE 1/4					40		480	547	160	182			
J. A. Swanson		SE 1/4 of NE 1/4					40		480	547	160	182			
D. Leroy Reynolds		lot 11					48	68	862	421	1273	347			
A. W. Haller		NE 1/4 of NW 1/4					40		547	390	1746	382			428
"		NW 1/4 of NW 1/4					40		480	547	160	182			
"		SW 1/4 of NW 1/4					40		480	547	160	182			
"		SE 1/4 of NW 1/4					40		480	547	160	182			
Nannie E. Armstrong		" 4 + 5					77	51	1327	1164	388	442			
A. P. Shyres		NE 1/4 of SW 1/4					40		480	547	165	188			
"		NW 1/4 of SW 1/4					40		480	547	165	188			
Augusta Abrahamson		SW 1/4 of SW 1/4					22	63	311	343	91	104			
Geo. F. Cashman		SE 1/4 of SW 1/4					33	22	313	313	91	104			
Wm. Jacobs		" 3					40		787	797	230	262			
J. A. Swanson		NE 1/4 of SE 1/4					40		776	578	1294	262			
Herbert Newwood		NW 1/4 of SE 1/4					40		684	194	1161	387			431
Geo. F. Cashman		SW 1/4 of SE 1/4					40		680	180	1078	260			293
J. A. Swanson		SE 1/4 of SE 1/4					38	67	480	480	180	182			
Coart Alt		lot 6					40		651	742	217	247			
Raymond B. Cook		lot 1 Blk. 3 Whitesburg					1	37	27	24	8	9			
							821	73	12518	1295	13873	4061			
									10983	1200	12183	4061			4602

Assessor's Return of Taxable Real Property in the Town of May, County of Cass, Minn., for the Year 1928.

Unplatted Real Estate—Assessed at 33 1-3 per cent of True and Full Value.

NAME OF OWNER	No. of School Dist.	DESCRIPTION	ASSESSOR'S VALUATIONS										EQUALIZED VALUATIONS			
			Subdivision	Sec. or Lot	Twp. or Block	Range	Number of Acres		True and Full Value of Land Excluding Structures and Improvements	STRUCTURES AND IMPROVEMENTS		Total True and Full Value of Land Including all Structures, Improvements and Machinery	Assessed Value of Land Including all Structures, Improvements and Machinery	Assessed Value as Equalized by Board of Review	Assessed Value as Equalized by the County Board	Assessed Value as Equalized by the Minnesota Tax Commission
							Dollars	Cents		Value of Buildings and Other Structures	Value of Machinery Permanently Attached to Real Estate					
Lawrence Keith	E 1/2	NE 1/4 of NE 1/4	8	133	31	20	195			195		57		65		
Edwin Newkirk		NW 1/4 of NE 1/4				40	480			480		160		182		
"		SW 1/4 of NE 1/4				40	300			300		99		113		
Lawrence Keith	E 1/2	SE 1/4 of NE 1/4				20	297			297		99		113		
Homer Lawhead		W 1/2 NW 1/4 NE 1/4				20	333			333		99		113		
Edwin Newkirk		NE 1/4 of NW 1/4				40	271			271		99		111		
Geo. Berndt		NW 1/4 of NW 1/4				40	330			330		110		125		
"		SW 1/4 of NW 1/4				40	650			650		190		217		
Edwin Newkirk		SE 1/4 of NW 1/4				40	570			570		190		217		
Homer Lawhead		W 1/2 SE 1/4 NE 1/4				20	324			324		108		129		
"		NE 1/4 of SW 1/4				40	312			312		104		119		
Geo. Berndt		NW 1/4 of SW 1/4				40	138	437		1183		353		394		
Samuel Shepner		SW 1/4 of SW 1/4				40	540			540		180		205		
"		SE 1/4 of SW 1/4				40	680	583	30	1280		420		467		
Lawrence Keith		NE 1/4 of SE 1/4				40	547			547		160		182		
"		NW 1/4 of SE 1/4				40	480			480		160		182		
Samuel Shepner		SW 1/4 of SE 1/4				39	691	269		960		283		320		
Margaret Roswald		SE 1/4 of SE 1/4				40	606	249		855		261		298		
Homer Lawhead		1 ac. of NW 1/4 SE 1/4				1	783			783		261		298		
						1	684			684		201		228		
						1	603			603		184		210		
						1	552			552		184		210		
						1	14			14		4		5		
						640	10307	1289	30	11626		3427		3893		

Assessor's Return of Taxable Real Property in the Town of May, County of Cass, Minn., for the Year 1928. 9

Unplatted Real Estate—Assessed at 33 1-3 per cent of True and Full Value.

NAME OF OWNER	No. of School Dist.	DESCRIPTION	ASSESSOR'S VALUATIONS										EQUALIZED VALUATIONS			
			Subdivision	Sec. or Lot	Twp. or Block	Range	Number of Acres		True and Full Value of Land Excluding Structures and Improvements	STRUCTURES AND IMPROVEMENTS		Total True and Full Value of Land Including all Structures, Improvements and Machinery	Assessed Value of Land Including all Structures, Improvements and Machinery	Assessed Value as Equalized by Board of Review	Assessed Value as Equalized by the County Board	Assessed Value as Equalized by the Minnesota Tax Commission
							Dollars	Cents		Value of Buildings and Other Structures	Value of Machinery Permanently Attached to Real Estate					
John M. Schmit		NE 1/4 of NE 1/4	9	133	31	42	657	243		900		267		300		
Anton Luck		NW 1/4 of NE 1/4				40	410	225		635		120		137		
"		SW 1/4 of NE 1/4				40	360			360		120		137		
John M. Schmit		SE 1/4 of NE 1/4				40	410			410		120		137		
Anton Luck		NE 1/4 of NW 1/4				40	576			576		192		219		
Edwin Newkirk		NW 1/4 of NW 1/4				40	701	437		1138		340		399		
"		SW 1/4 of NW 1/4				40	615	405		1020		340		399		
Anton Luck		SE 1/4 of NW 1/4				40	886	852		1738		576		605		
"		Less 3 acres state road.				37	720			720		240		274		
A. Roswald		NE 1/4 of SW 1/4				40	695			695		205		234		
"		NW 1/4 of SW 1/4				40	588			588		172		196		
"		SW 1/4 of SW 1/4				40	726	946		1672		504		557		
"		SE 1/4 of SW 1/4				40	636	876		1512		454		500		
Julia Lindberg		NE 1/4 of SE 1/4				40	579			579		172		196		
"		NW 1/4 of SE 1/4				40	660			660		192		213		
"		SW 1/4 of SE 1/4				40	579			579		172		196		
"		SE 1/4 of SE 1/4				40	735	153		888		268		298		
						40	685			685		205		234		
						640	10669	2214	153	13280		3781		4260		

Assessor's Return of Taxable Real Property in the Town of May, County of Cass, Minn., for the Year 1928.

Unplatted Real Estate—Assessed at 33 1-3 per cent of True and Full Value:

Table with columns: NAME OF OWNER, No. of School Dist., DESCRIPTION, SUBDIVISION, Sec. or Lot, Twp. or Block, Range, Number of Acres, ASSESSOR'S VALUATIONS (Structures and Improvements, True and Full Value of Land, etc.), EQUALIZED VALUATIONS (Assessed Value as Equalized by Board of Review, etc.).

Assessor's Return of Taxable Real Property in the Town of May, County of Cass, Minn., for the Year 1928. 11

Unplatted Real Estate—Assessed at 33 1-3 per cent of True and Full Value:

Table with columns: NAME OF OWNER, No. of School Dist., DESCRIPTION, SUBDIVISION, Sec. or Lot, Twp. or Block, Range, Number of Acres, ASSESSOR'S VALUATIONS (Structures and Improvements, True and Full Value of Land, etc.), EQUALIZED VALUATIONS (Assessed Value as Equalized by Board of Review, etc.).

NAME OF OWNER	No. of School Dist.	DESCRIPTION	ASSESSOR'S VALUATIONS					EQUALIZED VALUATIONS				
			Sec. or Lot	Twp. or Block	Range	Number of Acres	True and Full Value of Land Exclusive of Structures and Improvements	STRUCTURES AND IMPROVEMENTS True and Full Value of Buildings and Other Structures	True and Full Value of Machinery Permanently Attached to Real Estate	Total True and Full Value of Land Including all Structures, Improvements and Machinery	Assessed Value of Land Including all Structures, Improvements and Machinery	Assessed Value as Equalized by Board of Review
Annie J. Whipple		NE 1/4 of NE 1/4	12	133	31	40	547		547	160		182
J. G. Millopaugh		NW 1/4 of NE 1/4				40	460		460	160		182
John K. Richmond		SW 1/4 of NE 1/4				40	547		547	160		182
"		SE 1/4 of NE 1/4				40	460		460	160		182
J. G. Millopaugh		NE 1/4 of NW 1/4				40	547		547	160		182
"		NW 1/4 of NW 1/4				40	460		460	160		182
W. A. Wilson		SW 1/4 of NW 1/4				40	410		410	160		182
J. G. Millopaugh		SE 1/4 of NW 1/4				40	360		360	120		137
John P. Frigaard		NE 1/4 of SW 1/4				40	479		479	140		160
W. A. Wilson		NW 1/4 of SW 1/4				40	420		420	140		160
"		SW 1/4 of SW 1/4				40	479		479	140		160
"		SE 1/4 of SW 1/4				40	420	194	614	180		207
Grace Richmond		NE 1/4 of SE 1/4				40	547		547	160		182
"		NW 1/4 of SE 1/4				40	460		460	160		182
"		SW 1/4 of SE 1/4				40	547		547	160		182
Andrew Hagg, Sr.		SE 1/4 of SE 1/4				40	510		510	170		194
						40	547		547	160		182
						640	3223	194	8417	2465		2403
							1215	150	1395			

NAME OF OWNER	No. of School Dist.	DESCRIPTION	ASSESSOR'S VALUATIONS					EQUALIZED VALUATIONS				
			Sec. or Lot	Twp. or Block	Range	Number of Acres	True and Full Value of Land Exclusive of Structures and Improvements	STRUCTURES AND IMPROVEMENTS True and Full Value of Buildings and Other Structures	True and Full Value of Machinery Permanently Attached to Real Estate	Total True and Full Value of Land Including all Structures, Improvements and Machinery	Assessed Value of Land Including all Structures, Improvements and Machinery	Assessed Value as Equalized by Board of Review
Andrew Hagg, Sr.		NE 1/4 of NE 1/4	13	133	31	40	524		524	160		182
C. L. Hannahs		NW 1/4 of NE 1/4				40	723		723	241		295
"		SW 1/4 of NE 1/4				40	547		547	160		182
Andrew Hagg, Sr.		SE 1/4 of NE 1/4				40	460		460	160		182
"						40	535	421	1054	315		351
"						40	375	391	866	255		294
C. L. Hannahs		NE 1/4 of NW 1/4				40	780		780	224		260
Elizabeth Cole		NW 1/4 of NW 1/4				40	547	159	706	209		235
J. Anderson		SW 1/4 of NW 1/4				40	609	147	756	209		235
C. L. Hannahs		SE 1/4 of NW 1/4				40	534		534	170		209
"						40	600	324	924	272		328
J. Anderson		NE 1/4 of SW 1/4				40	579	300	879	258		328
"		NW 1/4 of SW 1/4				40	724		724	208		237
"		SW 1/4 of SW 1/4				40	953	156	1109	288		337
"		SE 1/4 of SW 1/4				40	750	144	894	288		337
G. A. Schumacher		SE 1/4 of SW 1/4				40	711		711	208		237
"						40	624		624	208		237
"						40	752		752	220		251
"						40	660		660	220		251
Nels Hyatt		NE 1/4 of SE 1/4				40	581		581	170		194
G. A. Schumacher		NW 1/4 of SE 1/4				40	718		718	210		239
"		SW 1/4 of SE 1/4				40	630		630	210		239
"		SE 1/4 of SE 1/4				40	787		787	230		262
Nels Hyatt		SE 1/4 of SE 1/4				40	670		670	230		262
						40	510	350	860	250		280
						640	10824	1627	12498	3681		4165
							9537	1506	11043			

Assessor's Return of Taxable Real Property in the Town of May, County of Cass, Minn., for the Year 1928.

Unplatted Real Estate—Assessed at 33 1-3 per cent of True and Full Value.

Table with columns: NAME OF OWNER, No. of School Dist., DESCRIPTION, ASSESSOR'S VALUATIONS (True and Full Value of Land, Structures and Improvements, etc.), EQUALIZED VALUATIONS (Assessed Value as Equalized by Board of Review, etc.).

Assessor's Return of Taxable Real Property in the Town of May, County of Cass, Minn., for the Year 1928. 17

Unplatted Real Estate—Assessed at 33 1-3 per cent of True and Full Value.

Table with columns: NAME OF OWNER, No. of School Dist., DESCRIPTION, ASSESSOR'S VALUATIONS (True and Full Value of Land, Structures and Improvements, etc.), EQUALIZED VALUATIONS (Assessed Value as Equalized by Board of Review, etc.).

Assessor's Return of Taxable Real Property in the Town of May, County of Cass, Minn., for the Year 1928.

Unplatted Real Estate—Assessed at 33 1-3 per cent of True and Full Value.

NAME OF OWNER	No. of School Dist.	DESCRIPTION	Sec. or Lot	Twp. or Block	Range	Number of Acres	ASSESSOR'S VALUATIONS				EQUALIZED VALUATIONS		
							True and Full Value of Lands Exclusive of Structures and Improvements Dollars	STRUCTURES AND IMPROVEMENTS True and Full Value of Buildings and Other Structures Dollars	True and Full Value of Machinery Permanently Attached to Real Estate Dollars	Total True and Full Value of Lands Including all Structures, Improvements and Machinery Dollars	Assessed Value of Lands Including all Structures, Improvements and Machinery Dollars	Assessed Value as Equalized by Board of Review Dollars	Assessed Value as Equalized by the County Board Dollars
Geo. S. Butler		NE 1/4 of NE 1/4 Lot 1 less Rt. Wy	18	133	31	34	640			640	187		213
Geo. Cashman		NW 1/4 of NE 1/4 " 2 " " "				33 49	381			381	112		129
Ira Butler		SW 1/4 of NE 1/4 Lot 13				29 54	551	420	1003	903	301		335
Ira S. Butler		SE 1/4 of NE 1/4 Lot 12				54 04	1139		1139	999	333		380
		NE 1/4 of NW 1/4											
		NW 1/4 of NW 1/4											
		SW 1/4 of NW 1/4											
		SE 1/4 of NW 1/4											
		NE 1/4 of SW 1/4											
		NW 1/4 of SW 1/4											
		SW 1/4 of SW 1/4											
		SE 1/4 of SW 1/4											
		NE 1/4 of SE 1/4											
		NW 1/4 of SE 1/4											
		SW 1/4 of SE 1/4											
		SE 1/4 of SE 1/4											
						151 07	3713	454	3167	933			1256
							2379	420	2799				

Ira S. Butler
This lot as shown in this quarter should be in Morrison Co.

PERSONAL

Assessor's Return of Taxable Real Property in the Town of May, County of Cass, Minn., for the Year 1928. 19

Unplatted Real Estate—Assessed at 33 1-3 per cent of True and Full Value.

NAME OF OWNER	No. of School Dist.	DESCRIPTION	Sec. or Lot	Twp. or Block	Range	Number of Acres	ASSESSOR'S VALUATIONS				EQUALIZED VALUATIONS		
							True and Full Value of Lands Exclusive of Structures and Improvements Dollars	STRUCTURES AND IMPROVEMENTS True and Full Value of Buildings and Other Structures Dollars	True and Full Value of Machinery Permanently Attached to Real Estate Dollars	Total True and Full Value of Lands Including all Structures, Improvements and Machinery Dollars	Assessed Value of Lands Including all Structures, Improvements and Machinery Dollars	Assessed Value as Equalized by Board of Review Dollars	Assessed Value as Equalized by the County Board Dollars
		NE 1/4 of NE 1/4		20	133	31							
		NW 1/4 of NE 1/4											
		SW 1/4 of NE 1/4											
		SE 1/4 of NE 1/4											
Nancy Merriks		NE 1/4 of NW 1/4 Lot 4				9 72	137		137	40			46
		NW 1/4 of NW 1/4											
		SW 1/4 of NW 1/4											
		SE 1/4 of NW 1/4											
		NE 1/4 of SW 1/4											
		NW 1/4 of SW 1/4											
		SW 1/4 of SW 1/4											
		SE 1/4 of SW 1/4											
		NE 1/4 of SE 1/4											
		NW 1/4 of SE 1/4											
		SW 1/4 of SE 1/4											
		SE 1/4 of SE 1/4											
						9 72	137		137	40			46

Assessor's Return of Taxable Real Property in the Town of May, County of Cass, Minn., for the Year 1928.

Unplatted Real Estate—Assessed at 33 1-3 per cent of True and Full Value.

Table with columns: NAME OF OWNER, No. of School Dist., DESCRIPTION, ASSESSOR'S VALUATIONS, EQUALIZED VALUATIONS. Includes entries for J. E. Stewart and various land subdivisions.

Assessor's Return of Taxable Real Property in the Town of May, County of Cass, Minn., for the Year 1928.

Unplatted Real Estate—Assessed at 33 1-3 per cent of True and Full Value.

Table with columns: NAME OF OWNER, No. of School Dist., DESCRIPTION, ASSESSOR'S VALUATIONS, EQUALIZED VALUATIONS. Includes entries for Chas. Leenknecht, Wm. J. Lehard, and Security St. Bk., Village.

NAME OF OWNER	No. of School Dist.	DESCRIPTION	Sec. or Lot	Twp. or Block	Range	Number of Acres	ASSESSOR'S VALUATIONS				EQUALIZED VALUATIONS					
							True and Full Value of Land and Improvements Dollars	STRUCTURES AND IMPROVEMENTS True and Full Value of Buildings and Other Structures Dollars	True and Full Value of Machinery Permanently Attached to Real Estate Dollars	Total True and Full Value of Land Including all Improvements and Machinery Dollars	Assessed Value as Equalized by Board of Review Dollars	Assessed Value as Equalized by the County Board Dollars	Assessed Value as Equalized by the Minnesota Tax Commission Dollars			
Gus A. Schumacher		NE¼ of NE¼	23	133	31	40	706			706						
"		NW¼ of NE¼				40	795			795			265			
"		SW¼ of NE¼				40	775			775			265			
"		SE¼ of NE¼				40	547			547			160			
"						40	547			547			160			
Sherman W. Jacobs		NE¼ of NW¼				40	804			804						
"		NW¼ of NW¼				40	705			705			235			
J. E. Gouss		SW¼ of NW¼				40	667			667			195			
"		SE¼ of NW¼				40	703			703			207			
"						40	726			726			207			
Security St. Bk., Pillager		All of N ² of SW ⁴ So. of Ry. R. W. y.				37 21	479			479			140			
J. E. Gouss		NE¼ of SW¼ No. of Ry. R. W. y.				18 79	420	470		420			160			
"		NW¼ of SW¼				18 79	780	235		780			225			
Security St. Bk., Pillager		SW¼ of SW¼														
"		SE¼ of SW¼ Lot 1				39 41	479			479			140			
Gus A. Schumacher		All no. of Ry. of S ² E ⁴				40	420			420			160			
Martin W. Ostrom		NE¼ of SE¼				9	547			547			160			
"		NW¼ of SE¼				9	137			137			40			
"		SW¼ of SE¼ All So. of Ry. R. W. y. less R. W. y. & W. 8 1/2 lds.				520 38	1446			1446			482			
"		SE¼ of SE¼														
Security St. Bk., Pillager		W 8 1/2 rd. of W 1/2 of S ² E ⁴ So. of Ry. R. W. y.				6 38	86			86			25			
						571 17	9374	470		9374			2886			
							8233	433		8653			2886			

NAME OF OWNER	No. of School Dist.	DESCRIPTION	Sec. or Lot	Twp. or Block	Range	Number of Acres	ASSESSOR'S VALUATIONS				EQUALIZED VALUATIONS					
							True and Full Value of Land and Improvements Dollars	STRUCTURES AND IMPROVEMENTS True and Full Value of Buildings and Other Structures Dollars	True and Full Value of Machinery Permanently Attached to Real Estate Dollars	Total True and Full Value of Land Including all Improvements and Machinery Dollars	Assessed Value as Equalized by Board of Review Dollars	Assessed Value as Equalized by the County Board Dollars	Assessed Value as Equalized by the Minnesota Tax Commission Dollars			
Sherman W. Mills, et al		NE¼ of NE¼ Less Ry. R. W. y.	24	133	31	39 75	758			758						
"		NW¼ of NE¼				40	639			639			213			
"		all no. of Ry. SW¼ of NE¼ Less 12.48 ac. to Ry.				18 92	547			547			160			
"		SE¼ of NE¼ " 12.23 " " "					257			257			76			
R. R. Ring		All So. of Ry. of S ² E ⁴				36 37	497			497						
G. A. Schumacher		NE¼ of NW¼				40	430			430			145			
"		NW¼ of NW¼				40	787			787			230			
"		SW¼ of NW¼ Less 2.86 ac. Ry. R. W. y.				40	752			752			220			
"		SE¼ of NW¼ " 11.49 " " " "				37 14	660			660			220			
"						28 51	711			711			208			
"							520			520			173			
J. W. Gouss		NE¼ of SW¼ Less 4.36 ac. " " "				35 64	589			589			172			
"		NW¼ of SW¼ " 6.20 " " " "				33 80	517			517			196			
"		SW¼ of SW¼				40	783			783			227			
"		SE¼ of SW¼				40	648	600		1048			435			
"						40	705			705			209			
"						40	534			534			178			
R. R. Ring		NE¼ of SE¼				40	547			547			160			
"		NW¼ of SE¼				40	280			280			82			
"		SW¼ of SE¼				40	722			722			211			
"		SE¼ of SE¼				40	533			533			170			
"						40	581			581			170			
"						40	572			572			170			
						40	624	1225		1749			580			
						590 13	10647	1973		12620			3545			
							3600	1737		5337			1606			

Assessor's Return of Taxable Real Property in the Town of May, County of Cass, Minn., for the Year 1928.

Unplatted Real Estate—Assessed at 33 1-3 per cent of True and Full Value.

Table with columns: NAME OF OWNER, No. of School Dist., DESCRIPTION, ASSESSOR'S VALUATIONS, EQUALIZED VALUATIONS. Includes entries for Roy Ring, Minn. Power + Light Co., and Frank A. Reid.

230 64 2854 2505 2834 2505 835 951

PERSONAL

Assessor's Return of Taxable Real Property in the Town of May, County of Cass, Minn., for the Year 1928.

Unplatted Real Estate—Assessed at 33 1-3 per cent of True and Full Value.

Table with columns: NAME OF OWNER, No. of School Dist., DESCRIPTION, ASSESSOR'S VALUATIONS, EQUALIZED VALUATIONS. Includes entries for W. Hardy and Minn. Power + Light Co.

203 24 3728 3394 3728 2394 798 909

Assessor's Return of Taxable Real Property in the Town of May, County of Cass, Minn., for the Year 1928.

Unplatted Real Estate—Assessed at 33 1-3 per cent of True and Full Value.

NAME OF OWNER	No. of School Dist.	DESCRIPTION	ASSESSOR'S VALUATIONS						EQUALIZED VALUATIONS					
			Subdivision	Sec. or Lot	Twp. or Block	Range	Number of Acres	STRUCTURES AND IMPROVEMENTS		Total True and Full Value of Lands Including all Structures, Improvements and Machinery Dollars	Assessed Value of Lands Including all Structures, Improvements and Machinery Dollars	Assessed Value as Equalized by Board of Review Dollars	Assessed Value as Equalized by the County Board Dollars	Assessed Value as Equalized by the Minnesota Tax Commission Dollars
								True and Full Value of Lands Exclusive of Structures and Improvements Dollars	True and Full Value of Buildings and Other Structures and Value of Machinery Permanently Attached to Real Estate Dollars					
W. J. Burke		NE 1/4 of NE 1/4	#	134	31	40	410		410					
"		NW 1/4 of NE 1/4				40	360		360	120		137		
"		SW 1/4 of NE 1/4				40	360		360	120		137		
"		SE 1/4 of NE 1/4				40	360		360	120		137		
B. J. Pottymann		NE 1/4 of NW 1/4				40	410		410					
"		NW 1/4 of NW 1/4				40	360		360	120		137		
"		SW 1/4 of NW 1/4				40	360	130	490	160		180		
"		SE 1/4 of NW 1/4				40	360		360	120		137		
"						40	360		360	120		137		
Ant Barth		NE 1/4 of SW 1/4				40	325		325					
"		NW 1/4 of SW 1/4				40	310		310	95		108		
"		SW 1/4 of SW 1/4				40	430		430	120		137		
"		SE 1/4 of SW 1/4				40	384		384	128		146		
"						40	396	292	688	222		249		
W. J. Burke		NE 1/4 of SE 1/4				40	410		410					
"		NW 1/4 of SE 1/4				40	360		360	120		137		
"		SW 1/4 of SE 1/4				40	360		360	120		137		
"		SE 1/4 of SE 1/4				40	360		360	120		137		
						640	6544	432	6976	2045		2306		
							5745	390	6135					

Assessor's Return of Taxable Real Property in the Town of May, County of Cass, Minn., for the Year 1928.

Unplatted Real Estate—Assessed at 33 1-3 per cent of True and Full Value.

NAME OF OWNER	No. of School Dist.	DESCRIPTION	ASSESSOR'S VALUATIONS						EQUALIZED VALUATIONS					
			Subdivision	Sec. or Lot	Twp. or Block	Range	Number of Acres	STRUCTURES AND IMPROVEMENTS		Total True and Full Value of Lands Including all Structures, Improvements and Machinery Dollars	Assessed Value of Lands Including all Structures, Improvements and Machinery Dollars	Assessed Value as Equalized by Board of Review Dollars	Assessed Value as Equalized by the County Board Dollars	Assessed Value as Equalized by the Minnesota Tax Commission Dollars
								True and Full Value of Buildings and Other Structures Dollars	True and Full Value of Machinery Permanently Attached to Real Estate Dollars					
E. A. Green		NE 1/4 of NE 1/4				40	274		274					
"		NW 1/4 of NE 1/4	2	134	34	39.60	240	576	816	250		275		
"		SW 1/4 of NE 1/4				39.30	480		480	160		182		
"		SE 1/4 of NE 1/4				40	330		330	110		125		
"						40	240		240	50		91		
George Horn		NE 1/4 of NW 1/4				38.80	470		470	140		160		
First Nat. Bk., Molley		NW 1/4 of NW 1/4				38.40	547		547	160		182		
"		SW 1/4 of NW 1/4				40	480		480	160		182		
George Horn		SE 1/4 of NW 1/4				40	479		479	140		160		
"						40	420		420	140		160		
First Nat. Bk., Molley		NE 1/4 of SW 1/4				40	480		480	160		182		
"		NW 1/4 of SW 1/4				40	547		547	160		182		
Floyd Cahoon		SW 1/4 of SW 1/4				40	480		480	160		182		
"		SE 1/4 of SW 1/4				40	479		479	160		182		
"						40	420		420	140		160		
J. A. Ackerson		NE 1/4 of SE 1/4				40	455		455	133		152		
"		NW 1/4 of SE 1/4				40	399		399	103		118		
"		SW 1/4 of SE 1/4				40	694		694	203		231		
"		SE 1/4 of SE 1/4				40	606		606	147		168		
"						40	503		503	147		168		
"						40	448		448	147		168		
"						40	563	445	1008	316		351		
						636	7868	1032	8900	2619		2965		
							6902	955	7857					

Assessor's Return of Taxable Real Property in the Town of May, County of Cass, Minn., for the Year 1928.

Unplatted Real Estate—Assessed at 33 1-3 per cent of True and Full Value.

Table with columns: NAME OF OWNER, No. of School Dist., DESCRIPTION, ASSESSOR'S VALUATIONS (True and Full Value, Structures and Improvements, Total True and Full Value, Assessed Value), EQUALIZED VALUATIONS (Assessed Value as Equalized by Board of Review, Assessed Value as Equalized by County Board, Assessed Value as Equalized by Minnesota Tax Commission).

Fidelity Finance Corp.
C. H. Walblom
Fidelity Finance Corp.

632 80
7360 1944
9360 3120
3520

PERSONAL

Assessor's Return of Taxable Real Property in the Town of May, County of Cass, Minn., for the Year 1928. 29

Unplatted Real Estate—Assessed at 33 1-3 per cent of True and Full Value.

Table with columns: NAME OF OWNER, No. of School Dist., DESCRIPTION, ASSESSOR'S VALUATIONS (True and Full Value, Structures and Improvements, Total True and Full Value, Assessed Value), EQUALIZED VALUATIONS (Assessed Value as Equalized by Board of Review, Assessed Value as Equalized by County Board, Assessed Value as Equalized by Minnesota Tax Commission).

J. A. Barber
First Natl Bk, Motley
John Durbin
Sydney E. Benion
Sydney E. Benion

626
8169 259
8109 2803
3191

Assessor's Return of Taxable Real Property in the Town of May, County of Cass, Minn., for the Year 1928.

Unplatted Real Estate—Assessed at 33 1-3 per cent of True and Full Value.

Table with columns: NAME OF OWNER, No. of School Dist., DESCRIPTION, SUBDIVISION, Sec. or Lot, Twp. or Block, Range, Number of Acres, ASSESSOR'S VALUATIONS (True and Full Value of Land, Structures and Improvements, Total True and Full Value), EQUALIZED VALUATIONS (Assessed Value as Equalized by Board of Review, Assessed Value as Equalized by the County Board, Assessed Value as Equalized by the Minnesota Tax Commission).

Handwritten owner names: G. W. Wasson, Mary J. Swecker, J. Zindall, Geo. W. Wasson, L. E. Thorne, Geo. W. Wasson.

Summary totals for the left page: 9/2 67, 13863, 845, 14508, 4257, 4838.

Assessor's Return of Taxable Real Property in the Town of May, County of Cass, Minn., for the Year 1928.

Unplatted Real Estate—Assessed at 33 1-3 per cent of True and Full Value.

Table with columns: NAME OF OWNER, No. of School Dist., DESCRIPTION, SUBDIVISION, Sec. or Lot, Twp. or Block, Range, Number of Acres, ASSESSOR'S VALUATIONS (True and Full Value of Land, Structures and Improvements, Total True and Full Value), EQUALIZED VALUATIONS (Assessed Value as Equalized by Board of Review, Assessed Value as Equalized by the County Board, Assessed Value as Equalized by the Minnesota Tax Commission).

Handwritten owner names: Durbin Wm., N. Kendall, Page Co. Anders, J. B. Walker & Co., Clara E. Green + Emma B. Lorbert.

Summary totals for the right page: 640, 10045, 803, 109124, 3206, 3640.

Assessor's Return of Taxable Real Property in the Town of May, County of Cass, Minn., for the Year 1928.

Unplatted Real Estate—Assessed at 33 1-3 per cent of True and Full Value.

NAME OF OWNER	No. of School Dist.	DESCRIPTION	ASSESSOR'S VALUATIONS					EQUALIZED VALUATIONS			
			Sec. or Lot	Twp. or Block	Range	Number of Acres	True and Full Value of Land	STRUCTURES AND IMPROVEMENTS	Total True and Full Value of Land	Assessed Value of Land	Assessed Value as Equalized by Board of Review
A. Samuelson		NE 1/4 of NE 1/4	9	134	31	40	581		581	194	194
Betta Durbin		NW 1/4 of NE 1/4				40	510		510	160	182
"		SW 1/4 of NE 1/4				40	547		547	160	182
Jeanette Mc Cormick		SE 1/4 of NE 1/4				40	510		510	170	194
John Coleman		NE 1/4 of NW 1/4				40	670		670	196	223
"		NW 1/4 of NW 1/4				40	588		588	160	182
"		SW 1/4 of NW 1/4				40	547		547	195	200
"		SE 1/4 of NW 1/4				40	523		523	326	364
A. Samuelson		NE 1/4 of SW 1/4				40	581		581	194	194
Berit Hoogheem		NW 1/4 of SW 1/4				40	686	518	1204	362	403
"		SW 1/4 of SW 1/4				40	711		711	208	237
Sam Nederhoff		SE 1/4 of SW 1/4				40	624		624	225	257
Raymond Martin		NE 1/4 of SE 1/4				40	780		780	228	260
A. Samuelson		NW 1/4 of SE 1/4				40	684		684	170	194
J. R. Martin		SW 1/4 of SE 1/4				40	581	397	978	266	297
"		SE 1/4 of SE 1/4				40	670		670	201	229
						640	10838	1193	11379	3347	3794

Assessor's Return of Taxable Real Property in the Town of May, County of Cass, Minn., for the Year 1928. 35

Unplatted Real Estate—Assessed at 33 1-3 per cent of True and Full Value.

NAME OF OWNER	No. of School Dist.	DESCRIPTION	ASSESSOR'S VALUATIONS					EQUALIZED VALUATIONS			
			Sec. or Lot	Twp. or Block	Range	Number of Acres	True and Full Value of Land	STRUCTURES AND IMPROVEMENTS	Total True and Full Value of Land	Assessed Value of Land	Assessed Value as Equalized by Board of Review
First Natl. Bk., Motley		NE 1/4 of NE 1/4	10	134	31	40	581		581	170	194
Fidelity Finance Corp.		NW 1/4 of NE 1/4				40	510		510	200	229
"		SW 1/4 of NE 1/4				40	547		547	200	228
"		SE 1/4 of NE 1/4				40	510		510	170	194
Andrew & Ingeva Kram		NE 1/4 of NW 1/4				40	650		650	190	217
"		NW 1/4 of NW 1/4				40	570		570	170	194
"		SW 1/4 of NW 1/4				40	581		581	170	194
"		SE 1/4 of NW 1/4				40	510		510	190	217
First Natl. Bk., Motley		NE 1/4 of SW 1/4				40	581		581	170	194
C. F. Walblom		NW 1/4 of SW 1/4				40	742		742	217	247
"		SW 1/4 of SW 1/4				40	651		651	282	317
First Natl. Bk., Motley		SE 1/4 of SW 1/4				40	581	227	808	170	194
Clifford S. Green		NE 1/4 of SE 1/4				40	715		715	209	238
First Natl. Bk., Motley		NW 1/4 of SE 1/4				40	627		627	170	194
"		SW 1/4 of SE 1/4				40	581		581	170	194
Clifford S. Green		SE 1/4 of SE 1/4				40	510		510	170	194
						640	10097	901	10998	3231	3668

Assessor's Return of Taxable Real Property in the Town of May, County of Cass, Minn., for the Year 1928.

Unplatted Real Estate—Assessed at 33 1-3 per cent of True and Full Value.

Table with columns: NAME OF OWNER, No. of School Dist., DESCRIPTION, SUBDIVISION, Sec. or Lot, Twp. or Block, Range, Number of Acres, ASSESSOR'S VALUATIONS (True and Full Value, Structures and Improvements, Total True and Full Value, Assessed Value), EQUALIZED VALUATIONS (Assessed Value as Equalized by Board of Review, Assessed Value as Equalized by County Board, Assessed Value as Equalized by Minnesota Tax Commission).

Assessor's Return of Taxable Real Property in the Town of May, County of Cass, Minn., for the Year 1928. 37

Unplatted Real Estate—Assessed at 33 1-3 per cent of True and Full Value.

Table with columns: NAME OF OWNER, No. of School Dist., DESCRIPTION, SUBDIVISION, Sec. or Lot, Twp. or Block, Range, Number of Acres, ASSESSOR'S VALUATIONS (True and Full Value, Structures and Improvements, Total True and Full Value, Assessed Value), EQUALIZED VALUATIONS (Assessed Value as Equalized by Board of Review, Assessed Value as Equalized by County Board, Assessed Value as Equalized by Minnesota Tax Commission).

Assessor's Return of Taxable Real Property in the Town of May, County of Cass, Minn., for the Year 1928.

Unplatted Real Estate—Assessed at 33 1-3 per cent of True and Full Value.

Table with columns: NAME OF OWNER, No. of School Dist., DESCRIPTION, SUBDIVISION, Sec. or Lot, Twp. or Block, Range, Number of Acres, ASSESSOR'S VALUATIONS (True and Full Value of Land, Structures and Improvements, Total True and Full Value of Land Including all Structures, Improvements and Machinery, Assessed Value of Land Including all Structures, Improvements and Machinery), EQUALIZED VALUATIONS (Assessed Value as Equalized by Board of Review, Assessed Value as Equalized by County Board, Assessed Value as Equalized by the Minnesota Tax Commission).

Ed Bolton
J. W. Shoff
Union Central Life Ins. Co.
"

Paul E. + Fred C. Riedel
J. R. Mannin
Edward W. Griffith
Paul E. + Fred C. Riedel

Chas. Peterreins
J. R. Mannin
Chas. Peterreins
"

Frank Swanson
Chris Wedman
"

640
10860
9528
1196
1107
12056
10635
3545
4021

PERSONAL

Assessor's Return of Taxable Real Property in the Town of May, County of Cass, Minn., for the Year 1928.

Unplatted Real Estate—Assessed at 33 1-3 per cent of True and Full Value.

Table with columns: NAME OF OWNER, No. of School Dist., DESCRIPTION, SUBDIVISION, Sec. or Lot, Twp. or Block, Range, Number of Acres, ASSESSOR'S VALUATIONS (True and Full Value of Land, Structures and Improvements, Total True and Full Value of Land Including all Structures, Improvements and Machinery, Assessed Value of Land Including all Structures, Improvements and Machinery), EQUALIZED VALUATIONS (Assessed Value as Equalized by Board of Review, Assessed Value as Equalized by County Board, Assessed Value as Equalized by the Minnesota Tax Commission).

Louison Fugate
" "
Sewert A. Ingebreton
" "

Modern Woodman of America
J. A. Beckerson
Wm. Crocker
" "

H. A. Williams
" "
" "
John M. Schmit

Leonard Hischer
" "
" "
" "

640
10388
9113
1149
11629
10262
3421
3876

Assessor's Return of Taxable Real Property in the Town of May, County of Cass, Minn., for the Year 1928.

Unplatted Real Estate—Assessed at 33 1-3 per cent of True and Full Value.

Table with columns: NAME OF OWNER, No. of School Dist., DESCRIPTION, ASSESSOR'S VALUATIONS (True and Full Value of Land, Structures and Improvements, Total True and Full Value), and EQUALIZED VALUATIONS (Assessed Value as Equalized by Board of Review, Assessed Value as Equalized by the County Board, Assessed Value as Equalized by the Minnesota Tax Commission).

Assessor's Return of Taxable Real Property in the Town of May, County of Cass, Minn., for the Year 1928. 41

Unplatted Real Estate—Assessed at 33 1-3 per cent of True and Full Value.

Table with columns: NAME OF OWNER, No. of School Dist., DESCRIPTION, ASSESSOR'S VALUATIONS (True and Full Value of Land, Structures and Improvements, Total True and Full Value), and EQUALIZED VALUATIONS (Assessed Value as Equalized by Board of Review, Assessed Value as Equalized by the County Board, Assessed Value as Equalized by the Minnesota Tax Commission).

Assessor's Return of Taxable Real Property in the Town of May, County of Cass, Minn., for the Year 1928.

Unplatted Real Estate—Assessed at 33 1-3 per cent of True and Full Value.

Table with columns: NAME OF OWNER, No. of School Dist., DESCRIPTION, SUBDIVISION, Sec. or Lot, Twp. or Block, Range, Number of Acres, ASSESSOR'S VALUATIONS (True and Full Value of Land, Structures and Improvements, Total True and Full Value), ASSESSOR'S VALUATIONS (Assessed Value as Equalized by Board of Review, Assessed Value as Equalized by the County Board, Assessed Value as Equalized by the Minnesota Tax Commission).

Assessor's Return of Taxable Real Property in the Town of May, County of Cass, Minn., for the Year 1928. 43

Unplatted Real Estate—Assessed at 33 1-3 per cent of True and Full Value.

Table with columns: NAME OF OWNER, No. of School Dist., DESCRIPTION, SUBDIVISION, Sec. or Lot, Twp. or Block, Range, Number of Acres, ASSESSOR'S VALUATIONS (True and Full Value of Land, Structures and Improvements, Total True and Full Value), ASSESSOR'S VALUATIONS (Assessed Value as Equalized by Board of Review, Assessed Value as Equalized by the County Board, Assessed Value as Equalized by the Minnesota Tax Commission).

Assessor's Return of Taxable Real Property in the Town of May, County of Cass, Minn., for the Year 1928.

Unplatted Real Estate—Assessed at 33 1-3 per cent of True and Full Value.

NAME OF OWNER	No. of School Dist.	DESCRIPTION	ASSESSOR'S VALUATIONS										EQUALIZED VALUATIONS			
			SUBDIVISION	Sec. or Lot	Twp. or Block	Range	Number of Acres		True and Full Value of Land Exclusive of Structures and Improvements	STRUCTURES AND IMPROVEMENTS		Total True and Full Value of Land Including all Structures, Improvements and Machinery	Assessed Value of Land Including all Structures, Improvements and Machinery	Assessed Value as Equalized by Board of Review	Assessed Value as Equalized by the County Board	Assessed Value as Equalized by the Minnesota Tax Commission
							Dollars	Dollars		Dollars	Dollars					
People St. Bk., Staples		NE 1/4 of NE 1/4	21	134	31		40	663	340	1003	299			334		
"		NW 1/4 of NE 1/4					40	582	315	897	194			221		
C. R. Andersons		SW 1/4 of NE 1/4					40	663		897	230			262		
"		SE 1/4 of NE 1/4					40	290		290	230			262		
"							40	581	542	1246	374			415		
J. P. Casper		NE 1/4 of NW 1/4					40	581		581	170			194		
"		NW 1/4 of NW 1/4					40	510		510	170			194		
"		SW 1/4 of NW 1/4					40	510		510	170			194		
"		SE 1/4 of NW 1/4					40	510		510	170			194		
Edwin Eggen		NE 1/4 of SW 1/4					40	547		547	160			182		
"		NW 1/4 of SW 1/4					40	440		440	160			182		
"		SW 1/4 of SW 1/4					40	547		547	160			182		
Henry Pietz		SE 1/4 of SW 1/4					40	575		575	160			182		
"							40	504		504	160			182		
E. M. Pietz		NE 1/4 of SE 1/4					40	684	237	921	273			307		
"		NW 1/4 of SE 1/4					40	640	219	859	187			213		
Emmal Pietz		SW 1/4 of SE 1/4					40	561		561	160			182		
Henry Volls		SE 1/4 of SE 1/4					40	547	486	1033	340			399		
							640	3935	1648	11483	3385			3827		
								8629	1526	10155	3385			3827		

PERSONAL

Assessor's Return of Taxable Real Property in the Town of May, County of Cass, Minn., for the Year 1928. 47

Unplatted Real Estate—Assessed at 33 1-3 per cent of True and Full Value.

NAME OF OWNER	No. of School Dist.	DESCRIPTION	ASSESSOR'S VALUATIONS										EQUALIZED VALUATIONS			
			SUBDIVISION	Sec. or Lot	Twp. or Block	Range	Number of Acres		True and Full Value of Land Exclusive of Structures and Improvements	STRUCTURES AND IMPROVEMENTS		Total True and Full Value of Land Including all Structures, Improvements and Machinery	Assessed Value of Land Including all Structures, Improvements and Machinery	Assessed Value as Equalized by Board of Review	Assessed Value as Equalized by the County Board	Assessed Value as Equalized by the Minnesota Tax Commission
							Dollars	Dollars		Dollars	Dollars					
Myra J. Powell		NE 1/4 of NE 1/4	22	134	31		40	366		366	107			122		
"		NW 1/4 of NE 1/4					40	370		370	107			122		
"		SW 1/4 of NE 1/4					40	492	130	622	204			230		
"		SE 1/4 of NE 1/4					40	361		361	87			99		
"							40	492		492	144			164		
Oliver Kinneberg		NE 1/4 of NW 1/4					40	650		650	190			217		
A. Roddean		NW 1/4 of NW 1/4					40	570		570	170			194		
"		SW 1/4 of NW 1/4					40	581		581	170			194		
Oliver Kinneberg		SE 1/4 of NW 1/4					40	510		510	170			194		
"							40	547		547	160			182		
"		NE 1/4 of SW 1/4					40	581		581	170			194		
A. Roddean		NW 1/4 of SW 1/4					40	510		510	170			194		
Geo. L. Williams		SW 1/4 of SW 1/4					40	581		581	170			194		
Oliver Kinneberg		SE 1/4 of SW 1/4					40	684		684	200			228		
"							40	604		604	200			228		
Wm. Munsterman		NE 1/4 of SE 1/4					40	581		581	170			194		
Wm. Fred Berndt		NW 1/4 of SE 1/4					40	633		633	185			211		
"		SW 1/4 of SE 1/4					40	555		555	185			211		
Wm. Munsterman		SE 1/4 of SE 1/4					40	581	420	1001	330			366		
"							40	571		571	170			194		
							640	4932	648	9630	2827			3211		
								7881	668	8481	2827			3211		

Assessor's Return of Taxable Real Property in the Town of May, County of Cass, Minn., for the Year 1928.

Unplatted Real Estate—Assessed at 33 1-3 per cent of True and Full Value.

NAME OF OWNER	No. of School Dist.	DESCRIPTION	ASSESSOR'S VALUATIONS						EQUALIZED VALUATIONS							
			SUBDIVISION	Sec. or Lot	Twp. or Block	Range	Number of Acres		True and Full Value of Land Exclusive of Structures and Improvements	STRUCTURES AND IMPROVEMENTS		Total True and Full Value of Land Including all Structures, Improvements and Machinery	Assessed Value of Land Including all Structures, Improvements and Machinery	Assessed Value as Equalized by Board of Review	Assessed Value as Equalized by the County Board	Assessed Value as Equalized by the Minnesota Tax Commission
							Dollars	Dollars		Dollars	Dollars					
Albert Ellgen		NE 1/4 of NE 1/4	23	134	31	40	40	906		906	215			302		
"		NW 1/4 of NE 1/4				40	40	795		795	160			182		
"		SW 1/4 of NE 1/4				40	40	752		752	220			251		
N. Benedix		SE 1/4 of NE 1/4				40	40	768	573	1311	437			487		
A. C. Mc Innis		NE 1/4 of NW 1/4				40	40	770	729	1499	450			500		
"		NW 1/4 of NW 1/4				40	40	675	675	1350	151			206		
Sam Narvego		SW 1/4 of NW 1/4				40	40	543		543	250			285		
"		SE 1/4 of NW 1/4				40	40	750		750	458			153		
"		NE 1/4 of SW 1/4				40	40	402		402	134			171		
"		NW 1/4 of SW 1/4				40	40	513		513	170			194		
"		SW 1/4 of SW 1/4				40	40	581		581	134			153		
"		SE 1/4 of SW 1/4				40	40	458		458	420			467		
H. Benedix		NE 1/4 of SE 1/4				40	40	650	659	1260	209			230		
"		NW 1/4 of SE 1/4				40	40	510	102	612	170			194		
"		SW 1/4 of SE 1/4				40	40	510		510	170			194		
"		SE 1/4 of SE 1/4				40	40	510		510	170			194		
						640		18460	2084	12484	3685			4163		
								9125	1930	11055						

PERSONAL

Assessor's Return of Taxable Real Property in the Town of May, County of Cass, Minn., for the Year 1928. 49

Unplatted Real Estate—Assessed at 33 1-3 per cent of True and Full Value.

NAME OF OWNER	No. of School Dist.	DESCRIPTION	ASSESSOR'S VALUATIONS						EQUALIZED VALUATIONS							
			SUBDIVISION	Sec. or Lot	Twp. or Block	Range	Number of Acres		True and Full Value of Land Exclusive of Structures and Improvements	STRUCTURES AND IMPROVEMENTS		Total True and Full Value of Land Including all Structures, Improvements and Machinery	Assessed Value of Land Including all Structures, Improvements and Machinery	Assessed Value as Equalized by Board of Review	Assessed Value as Equalized by the County Board	Assessed Value as Equalized by the Minnesota Tax Commission
							Dollars	Dollars		Dollars	Dollars					
Orlando Rogers		NE 1/4 of NE 1/4	24	134	31	40	40	752		752	220			251		
"		NW 1/4 of NE 1/4				40	40	660		660	280			312		
"		SW 1/4 of NE 1/4				40	40	447	339	786	160			182		
"		SE 1/4 of NE 1/4				40	40	752		752	220			251		
John Peterreins		NE 1/4 of NW 1/4				40	40	616	639	1245	374			415		
"		NW 1/4 of NW 1/4				40	40	540	552	1092	211			241		
"		SW 1/4 of NW 1/4				40	40	633		633	181			206		
"		SE 1/4 of NW 1/4				40	40	619		619	186			212		
Edward W. Griffith		NE 1/4 of SW 1/4				40	40	787		787	230			262		
"		NW 1/4 of SW 1/4				40	40	690		690	241			275		
"		SW 1/4 of SW 1/4				40	40	824		824	357			398		
"		SE 1/4 of SW 1/4				40	40	723	486	1209	207			236		
John Peterreins		NE 1/4 of SE 1/4				40	40	700	458	1158	215			234		
"		NW 1/4 of SE 1/4				40	40	621		621	184			153		
"		SW 1/4 of SE 1/4				40	40	701		701	202			230		
"		SE 1/4 of SE 1/4				40	40	458		458	134			153		
						640		19800	2517	13017	3842			4340		
								9474	2652	11526						

Assessor's Return of Taxable Real Property in the Town of May, County of Cass, Minn., for the Year 1928.

Unplatted Real Estate—Assessed at 33 1-3 per cent of True and Full Value.

Table with columns: NAME OF OWNER, No. of School Dist., DESCRIPTION, SUBDIVISION, ASSESSOR'S VALUATIONS, EQUALIZED VALUATIONS. Includes entries for L.P. Sisson, Ferdinand Meis, L.P. Sisson, Chas. J. Bandlow, Wm. Weigel, Wm. R. Mitton, Wm. Mitton.

Assessor's Return of Taxable Real Property in the Town of May, County of Cass, Minn., for the Year 1928. 51

Unplatted Real Estate—Assessed at 33 1-3 per cent of True and Full Value.

Table with columns: NAME OF OWNER, No. of School Dist., DESCRIPTION, SUBDIVISION, ASSESSOR'S VALUATIONS, EQUALIZED VALUATIONS. Includes entries for Ira Cottingham, W. J. Eagan, Matt Hagtis, W. J. Eagan, Shon Horn.

Assessor's Return of Taxable Real Property in the Town of May, County of Cass, Minn., for the Year 1928.

Unplatted Real Estate—Assessed at 33 1-3 per cent of True and Full Value.

Table with columns: NAME OF OWNER, DESCRIPTION, SUBDIVISION, ASSESSOR'S VALUATIONS (True and Full Value of Lands, Structures and Improvements, Total True and Full Value of Lands), EQUALIZED VALUATIONS (Assessed Value as Equalized by Board of Review, Assessed Value as Equalized by the County Board, Assessed Value as Equalized by the Minnesota Tax Commission).

Assessor's Return of Taxable Real Property in the Town of May, County of Cass, Minn., for the Year 1928. 53

Unplatted Real Estate—Assessed at 33 1-3 per cent of True and Full Value.

Table with columns: NAME OF OWNER, DESCRIPTION, SUBDIVISION, ASSESSOR'S VALUATIONS (True and Full Value of Lands, Structures and Improvements, Total True and Full Value of Lands), EQUALIZED VALUATIONS (Assessed Value as Equalized by Board of Review, Assessed Value as Equalized by the County Board, Assessed Value as Equalized by the Minnesota Tax Commission).

Assessor's Return of Taxable Real Property in the Town of May, County of Cass, Minn., for the Year 1928.

Unplatted Real Estate—Assessed at 33 1-3 per cent of True and Full Value.

Table with columns: NAME OF OWNER, No. of School Dist., DESCRIPTION, SUBDIVISION, Sec. or Lot, Twp. or Block, Range, Number of Acres, ASSESSOR'S VALUATIONS (True and Full Value of Land, Structures and Improvements, Total True and Full Value), ASSESSOR'S VALUATIONS (True and Full Value of Buildings and Other Structures, True and Full Value of Machinery Permanently Attached to Real Estate, Total True and Full Value of Land Including all Structures, Improvements and Machinery), EQUALIZED VALUATIONS (Assessed Value as Equalized by Board of Review, Assessed Value as Equalized by the County Board, Assessed Value as Equalized by the Minnesota Tax Commission).

Grant Goplen
Hans P. Olson
Peter Sjowall

Assessor's Return of Taxable Real Property in the Town of May, County of Cass, Minn., for the Year 1928. 55

Unplatted Real Estate—Assessed at 33 1-3 per cent of True and Full Value.

Table with columns: NAME OF OWNER, No. of School Dist., DESCRIPTION, SUBDIVISION, Sec. or Lot, Twp. or Block, Range, Number of Acres, ASSESSOR'S VALUATIONS (True and Full Value of Land, Structures and Improvements, Total True and Full Value), ASSESSOR'S VALUATIONS (True and Full Value of Buildings and Other Structures, True and Full Value of Machinery Permanently Attached to Real Estate, Total True and Full Value of Land Including all Structures, Improvements and Machinery), EQUALIZED VALUATIONS (Assessed Value as Equalized by Board of Review, Assessed Value as Equalized by the County Board, Assessed Value as Equalized by the Minnesota Tax Commission).

Peter J. Embretson
Joe Kraker
A. H. Henwood
S. E. Sampson
Arthur F. Sampson
A. F. Sampson
S. E.
A. H. Henwood
Arthur F. Sampson
S. E. Sampson
Arthur F. Sampson

PERSONAL

Assessor's Return of Taxable Real Property in the Town of May, County of Cass, Minn., for the Year 1928.

Unplatted Real Estate—Assessed at 33 1-3 per cent of True and Full Value.

NAME OF OWNER	No. of School Dist.	DESCRIPTION	SUBDIVISION		ASSESSOR'S VALUATIONS				EQUALIZED VALUATIONS			
			Sec. or Lot	Twp. or Block	Range	Number of Acres	True and Full Value of Land Exclusive of Structures and Improvements	STRUCTURES AND IMPROVEMENTS	Total True and Full Value of Land Including Structures, Improvements and Machinery	Assessed Value of Land Including all Structures, Improvements and Machinery	Assessed Value as Equalized by Board of Review	Assessed Value as Equalized by the County Board
Jay Converse		NE 1/4 of NE 1/4	21	134	31	40	479		479			160
"		NW 1/4 of NE 1/4				40	420		420	140		
"		SW 1/4 of NE 1/4				40	345		345	115		
"		SE 1/4 of NE 1/4				40	374		374	168		
Joe Francisco		lots 3-4-5-6				155	2315	222	2523	641		160
Fred W. Wiest		NE 1/4 of NW 1/4 Lot 1				40	674		674	200		955
"		NW 1/4 of NW 1/4 " 2				40	600		600	200		228
"		SW 1/4 of NW 1/4 " 7				40	791		791	205		234
"		SE 1/4 of NW 1/4 " 8				40	630		630	200		239
Thos. Goggin		lots 13-14				75	1194		1194	349		228
Fred Wiest		NE 1/4 of SW 1/4 Lot 9				40	1047		1047	349		398
"		NW 1/4 of SW 1/4 " 10				40	684		684	200		228
"		SW 1/4 of SW 1/4 " 15				40	600		600	200		228
"		SE 1/4 of SW 1/4 " 16				40	600		600	200		228
Alex Lamb, Jr.		lots 11-12				76	581		581	170		194
Fred Wiest		NE 1/4 of SE 1/4				40	576	335	911	170		194
"		NW 1/4 of SE 1/4				40	718	495	1213	210		259
"		SW 1/4 of SE 1/4				40	730		730	210		239
"		SE 1/4 of SE 1/4				40	684		684	200		228
						40	600		600	200		228
						40	570		570	170		194
						947	15118	763	15881	4655		5294

Assessor's Return of Taxable Real Property in the Town of May, County of Cass, Minn., for the Year 1928. 57

Unplatted Real Estate—Assessed at 33 1-3 per cent of True and Full Value.

NAME OF OWNER	No. of School Dist.	DESCRIPTION	SUBDIVISION		ASSESSOR'S VALUATIONS				EQUALIZED VALUATIONS			
			Sec. or Lot	Twp. or Block	Range	Number of Acres	True and Full Value of Land Exclusive of Structures and Improvements	STRUCTURES AND IMPROVEMENTS	Total True and Full Value of Land Including Structures, Improvements and Machinery	Assessed Value of Land Including all Structures, Improvements and Machinery	Assessed Value as Equalized by Board of Review	Assessed Value as Equalized by the County Board
Arthur J. Dahl		NE 1/4 of NE 1/4	32	134	31	40	838		838			279
"		NW 1/4 of NE 1/4				40	735		735	245		
"		SW 1/4 of NE 1/4				40	642		642	214		244
"		SE 1/4 of NE 1/4				40	343		343	101		115
"						40	547	713	1260	380		420
H. W. Converse		NE 1/4 of NW 1/4				40	547		547	160		182
"		NW 1/4 of NW 1/4				40	480		480	160		182
"		SW 1/4 of NW 1/4				40	735	244	979	460		510
"		SE 1/4 of NW 1/4				40	645	726	1371	238		271
"						40	814		814	238		271
"						40	714		714	238		271
"						40	616		616	180		205
V. Lockwood		NE 1/4 of SW 1/4				40	540		540	180		205
"		NW 1/4 of SW 1/4				40	806		806	265		302
"		SW 1/4 of SW 1/4				40	630		630	190		217
"		SE 1/4 of SW 1/4				40	570	875	1445	442		488
"						40	576	510	1086	230		262
"						40	690		690	230		262
Frank H. Packer		NE 1/4 of SE 1/4				40	616		616	180		205
"		NW 1/4 of SE 1/4				40	540		540	180		205
"		SW 1/4 of SE 1/4				40	821		821	240		274
"		SE 1/4 of SE 1/4				40	684	940	1624	490		541
"						40	600	870	1470	440		511
"						40	570		570	170		194
						640	11047	3322	14369	4255		4789

Assessor's Return of Taxable Real Property in the Town of May, County of Cass, Minn., for the Year 1928.

Unplatted Real Estate—Assessed at 33 1-3 per cent of True and Full Value.

NAME OF OWNER	No. of School Dist.	DESCRIPTION	ASSESSOR'S VALUATIONS					EQUALIZED VALUATIONS			
			Sec. or Lot	Twp. or Block	Range	Number of Acres	True and Full Value of Land	Structures and Improvements	Total True and Full Value	Assessed Value	Assessed Value
Mike Wasmack		NE 1/4 of NE 1/4 less 2 ac.	33	134	31	38	581		581	170	194
"		NW 1/4 of NE 1/4				40	510		510	170	194
P. J. Casper		SW 1/4 of NE 1/4				40	510		510	170	194
"		SE 1/4 of NE 1/4				40	510		510	170	194
Louis Williams		2 ac. of NW 1/4 of NE 1/4				2	68	109	173	53	58
Otto Klingbeil		NE 1/4 of NW 1/4				40	579		579	173	197
"		NW 1/4 of NW 1/4				40	522	150	672	234	265
Geo. J. Moon		SW 1/4 of NW 1/4				40	609		609	178	203
"		SE 1/4 of NW 1/4				40	609		609	178	203
L. D. Tutts		NE 1/4 of SW 1/4				40	581		581	170	194
Geo. Litter & L. Vinsen		NW 1/4 of SW 1/4				40	581		581	170	194
"		SW 1/4 of SW 1/4				40	752	227	979	290	326
L. D. Tutts		SE 1/4 of SW 1/4				40	660	210	870	290	326
"						40	581		581	170	194
P. J. Casper		NE 1/4 of SE 1/4				40	581		581	170	194
"		NW 1/4 of SE 1/4				40	510		510	170	194
John M. Schmit		SW 1/4 of SE 1/4				40	629	259	888	264	296
"		SE 1/4 of SE 1/4				40	532	240	772	264	296
						40	640		640	187	213
						640	9723	739	10510	3087	3505
							8532	129	9261	3087	3505

Assessor's Return of Taxable Real Property in the Town of May, County of Cass, Minn., for the Year 1928. 59

Unplatted Real Estate—Assessed at 33 1-3 per cent of True and Full Value.

NAME OF OWNER	No. of School Dist.	DESCRIPTION	ASSESSOR'S VALUATIONS					EQUALIZED VALUATIONS			
			Sec. or Lot	Twp. or Block	Range	Number of Acres	True and Full Value of Land	Structures and Improvements	Total True and Full Value	Assessed Value	Assessed Value
P. M. Olson		NE 1/4 of NE 1/4				40	650		650	190	217
Dowes Lbr. Co.		NW 1/4 of NE 1/4	34	134	3E	40	570		570	190	217
Mary Lamm		SW 1/4 of NE 1/4				40	600		600	200	228
P. M. Olson		SE 1/4 of NE 1/4				40	459		459	153	174
"						40	513		513	171	195
Dowes Lbr. Co.		NE 1/4 of NW 1/4 and 1 ac. of NW 1/4 NW 1/4				41	581		581	170	194
Mary Lamm		NW 1/4 of NW 1/4 less 1 acre				39	472		472	138	157
Mary Lamm		SW 1/4 of NW 1/4				40	414		414	138	157
"		SE 1/4 of NW 1/4				40	459		459	153	174
"						40	513	324 300	813	271	303
Clifford J. Cornes		NE 1/4 of SW 1/4				40	821		821	240	274
"		NW 1/4 of SW 1/4				40	720		720	240	274
"		SW 1/4 of SW 1/4				40	616	853	1469	430	490
"		SE 1/4 of SW 1/4				40	540	770	1310	430	490
"						40	599		599	175	200
"						40	525		525	175	200
"						40	680		680	220	251
E. M. Barnett		NE 1/4 of SE 1/4				40	691	107	798	235	266
Mary Lamm		NW 1/4 of SE 1/4				40	606	99	705	235	266
"		SW 1/4 of SE 1/4				40	827		827	271	309
"		SE 1/4 of SE 1/4				40	513		513	271	309
Julia + Alex Robertson						40	692		692	206	235
"						40	645		645	215	245
						640	10449	1524	11933	3450	3912
							9165	1189	10354	3450	3912

Assessor's Return of Taxable Real Property in the Town of May, County of Cass, Minn., for the Year 1928.

Unplatted Real Estate—Assessed at 33 1-3 per cent of True and Full Value.

MADE IN ST. CLOUD BY THE FOSTER-ROSS CO.

NAME OF OWNER	No. of School Dist.	DESCRIPTION	Sec. or Lot	Twp. or Block	Range	Number of Acres	ASSESSOR'S VALUATIONS				EQUALIZED VALUATIONS		
							True and Full Value of Land Exclusive of Structures and Improvements Dollars	STRUCTURES AND IMPROVEMENTS True and Full Value of Buildings and Other Structures Dollars	True and Full Value of Machinery Permanently Attached to Real Estate Dollars	Total True and Full Value of Land Including all Structures, Improvements and Machinery Dollars	Assessed Value of Land Including all Structures, Improvements and Machinery Dollars	Assessed Value as Equalized by Board of Review Dollars	Assessed Value as Equalized by the County Board Dollars
F. J. Grantham		NE 1/4 of NE 1/4	35	134	31	40	581			581	170		194
Hugo Lindahl		NW 1/4 of NE 1/4				40	570			570	190		217
F. J. Grantham		SW 1/4 of NE 1/4				40	570			570	190		217
"		SE 1/4 of NE 1/4				40	581			581	170		194
Hugo Lindahl		NE 1/4 of NW 1/4				40	650			650	190		217
C. M. Olson		NW 1/4 of NW 1/4				40	570			570	190		217
"		SW 1/4 of NW 1/4				40	465			465	136		155
Julia & Alex Robertson		SE 1/4 of NW 1/4				40	410	573	983	890	297		328
"		NE 1/4 of SW 1/4				40	588			588	172		196
"		NW 1/4 of SW 1/4				40	701	340	1041	310	310		347
"		SW 1/4 of SW 1/4				40	530	315	845	530	155		177
"		SE 1/4 of SW 1/4				40	465		465	300	100		114
F. J. Grantham		NE 1/4 of SE 1/4				40	684			684	200		228
Security St. Bk., Broten, Minn.		NW 1/4 of SE 1/4				40	630			630	210		239
F. J. Grantham		SW 1/4 of SE 1/4				40	630			630	210		239
"		SE 1/4 of SE 1/4				40	684			684	200		228
						640	7854	913	8767	8700	2900		3290
							9602	976	10578				3507

Grand Total

38,066 12 587441 72245 30 669716 2891 3295 219921

PERSONAL

Assessor's Return of Taxable Real Property in the Town of May, County of Cass, Minn., for the Year 1928. 61

Unplatted Real Estate—Assessed at 33 1-3 per cent of True and Full Value.

NAME OF OWNER	No. of School Dist.	DESCRIPTION	Sec. or Lot	Twp. or Block	Range	Number of Acres	ASSESSOR'S VALUATIONS				EQUALIZED VALUATIONS		
							True and Full Value of Land Exclusive of Structures and Improvements Dollars	STRUCTURES AND IMPROVEMENTS True and Full Value of Buildings and Other Structures Dollars	True and Full Value of Machinery Permanently Attached to Real Estate Dollars	Total True and Full Value of Land Including all Structures, Improvements and Machinery Dollars	Assessed Value of Land Including all Structures, Improvements and Machinery Dollars	Assessed Value as Equalized by Board of Review Dollars	Assessed Value as Equalized by the County Board Dollars
S. R. Child		NE 1/4 of NE 1/4	36	134	31	40	684			684	200		228
"		NW 1/4 of NE 1/4				40	684			684	200		228
"		SW 1/4 of NE 1/4				40	600			600	200		228
"		SE 1/4 of NE 1/4				40	684			684	200		228
"		NE 1/4 of NW 1/4				40	684			684	200		228
Effe P. Wacholy		NW 1/4 of NW 1/4				40	684			684	200		228
"		SW 1/4 of NW 1/4				40	684			684	200		228
S. R. Child		SE 1/4 of NW 1/4				40	570			570	190		217
Richard M. Randall		NE 1/4 of SW 1/4				40	684			684	200		228
"		NW 1/4 of SW 1/4				40	722			722	241		275
Nancy S. Hix		SW 1/4 of SW 1/4				40	547			547	164		187
Zach A. Barnett		SE 1/4 of SW 1/4				40	480			480	160		182
Henry Koepke		NE 1/4 of SE 1/4				40	547			547	160		182
"		NW 1/4 of SE 1/4				40	480			480	160		182
Effe P. Wacholy Zach Barnett		SW 1/4 of SE 1/4				40	325			325	95		108
"		SE 1/4 of SE 1/4				40	360			360	120		139
						640	9774	187	9961	873	2891		3295
							8574	199	8773	2891			219921

Grand Total

38,066 12 587441 72245 30 669716 2891 3295 219921

Tabular Statement of Real Property Assessment of the _____ of _____, County of _____, Minnesota, 1928.

Amount Brought Forward from Page	Number of Acres of Land Assessed		ASSESSOR'S VALUATIONS				EQUALIZED VALUATIONS			REMARKS
	Acres	100ths	True and Full Value of Lands Exclusive of Structures and Improvements Dollars	True and Full Value of Buildings and Other Structures Dollars	True and Full Value of Machinery Permanently attached to Real Estate Dollars	Total True and Full Value of Lands Including all Structures, Improvements and Machinery Dollars	Assessed Value as Equalized by Board of Review Dollars	Assessed Value as Equalized by the County Board Dollars	Assessed Value as Equalized by the Minnesota Tax Commission Dollars	
11728 97			158622	2273	181098	60367				
" " " " " 22	591	17	8228	435	8658	2886				
" " " " " 23	590	13	2902	1734	16636	3545				
" " " " " 24	230	64	2505		2505	835				
" " " " " 25	203	24	2394		2394	798				
" " " " " 26	640		5745	396	6135	3045				
" " " " " 27	636		6902	955	7857	2619				
" " " " " 28	632	80	7560	1800	9360	3120				
" " " " " 29	626		8169	240	8409	2803				
" " " " " 30	620	33	8412	638	9042	3014				
" " " " " 31	900	72	11942	1339	13181	4394				
" " " " " 32	912	64	11988	783	12771	4257				
" " " " " 33	640		8815	803	9618	3206				
" " " " " 34	640		8938	1104	10042	3347				
" " " " " 35	640		8859	834	9693	3231				
" " " " " 36	640		8490	990	9480	3160				
" " " " " 37	640		7719	1941	9660	3220				
" " " " " 38	640		9528	1107	10635	3545				
" " " " " 39	640		9113	149	10262	3421				
" " " " " 40	640		8420	2503	10923	3641				
" " " " " 41	640		8616	991	9606	3202				
24072 64			319862	41920	361965	120556				

Tabular Statement of Real Property Assessment of the _____ of _____, County of _____, Minnesota, 1928.

Amount Brought Forward from Page	Number of Acres of Land Assessed		ASSESSOR'S VALUATIONS				EQUALIZED VALUATIONS			REMARKS
	Acres	100ths	True and Full Value of Lands Exclusive of Structures and Improvements Dollars	True and Full Value of Buildings and Other Structures Dollars	True and Full Value of Machinery Permanently attached to Real Estate Dollars	Total True and Full Value of Lands Including all Structures, Improvements and Machinery Dollars	Assessed Value as Equalized by Board of Review Dollars	Assessed Value as Equalized by the County Board Dollars	Assessed Value as Equalized by the Minnesota Tax Commission Dollars	
24072 64			319862	41920	361965	120556				
" " " " " 42	640		8373	540	8913	2971				av for d value per exclusive of imp. \$13.54
" " " " " 43	922	20	13371	2676	16047	5316				
" " " " " 44	934	76	12594	1557	14151	4717				including imp. \$5.10
" " " " " 45	640		8850	888	9738	3246				changed to 10.00
" " " " " 46	640		8629	1526	10155	3385				check th.
" " " " " 47	640		7881	600	8481	2827				
" " " " " 48	640		9125	1990	11055	3685				
" " " " " 49	640		9474	2052	11526	3842				
" " " " " 50	640		9360	1899	11259	3753				
" " " " " 51	640		9153	792	9945	3315				
" " " " " 52	640		9153	690	9843	3281				
" " " " " 53	640		10050	1932	11982	3994				
" " " " " 54	640		9639	699	10338	3446				
" " " " " 55	948	84	13540	1808	15348	5116				
" " " " " 56	947	68	13262	703	13965	4655				
" " " " " 57	640		9691	3075	12765	4255				
" " " " " 58	640		8532	729	9261	3087				
" " " " " 59	640		9165	1189	10354	3451				
" " " " " 60	640		7854	846	8700	2900				
" " " " " 61	640		8574	29	8603	2891				
Grand Total	3866	12	513314	62773	576087	194004				