

ASSESSMENT BOOKS

1930

Town of Maple

THE FRITZ-CROSS CO., ST. CLOUD, MINN.

INDEX TO SECTIONS

SECTION PAGE

Section 1	
" 2	
" 3	
" 4	
" 5	
" 6	
" 7	
" 8	
" 9	
" 10	
" 11	
" 12	
" 13	
" 14	
" 15	
" 16	
" 17	
" 18	
" 19	
" 20	
" 21	
" 22	
" 23	
" 24	
" 25	
" 26	
" 27	
" 28	
" 29	
" 30	
" 31	
" 32	
" 33	
" 34	
" 35	
" 36	

For Convenience of Auditor in Showing Boundaries of School Districts

Township No. 136 Range No. 30 Mer. P. M.

MADE IN ST. CLOUD BY THE FIRST-CROSS CO. Form 02

6	5	4	3	2	1
Unorganized School District					
18	17	16	15	14	13
School District #20					
30	29	28	27	26	25
31	32	33	34	35	36
School District #22					

Assessor's Return of Taxable Real Property in the Town of Maple, County of Cass, Minn., for the Year 1930.

Unplatted Real Estate—Assessed at 33 1-3 per cent of True and Full Value.

MAPLE TOWNSHIP

PERCENTAGE INCREASES AND DECREASES MADE BY COUNTY BOARD AND STATE TAX COMMISSION ON 1928 ASSESSMENT

County Board:
Unplatted
73% Inc. on Lands
25% Inc. on Structures

Tax Commission:
NONE

MAPLE TWP.

County Board Changes.

Unplatted

Lands - 46% Inc. ^{160.6}
Buildings and Structures -
6% Dec. ^{103.4}

Tax Commission Changes.

Platted and Unplatted
Lands including Buildings,
Structures and Machinery.
10% Inc.

ASSESSOR'S VALUATIONS

Assessed Value as Equalized by the Minnesota Tax Commission Dollars

NAME OF OWNER	No. of School Dist.	SUBDIVISION	DESCRIPTION			Number of Acres	True and Full Value of Lands Exclusive of Structures and Improvements Dollars	ASSESSOR'S VALUATIONS			Total Full Land all Improvements	County Board Changes	Assessed Value as Equalized by the Minnesota Tax Commission Dollars
			Sec. or Lot	Twp. or Block	Range			True and Full Value of Buildings and Other Structures Dollars	True and Full Value of Machinery Permanently Attached to Real Estate Dollars	Total			
Adolph Jaffer	20	NE 1/4 of NE 1/4	Lot 1	1	136	30	3957	602375	279270		18		
"		NW 1/4 of NE 1/4	" 2				4137	602375			60		
Henry Anderson		SW 1/4 of NE 1/4					40	23650405			65		
Adolph Jaffer		SE 1/4 of NE 1/4	less 11 ac.				29	41289180			28		
Henry Anderson		11 ac. of SE 1/4 of NE 1/4					11	0414490			14		
Olie E. Boots		NE 1/4 of NW 1/4	Lot 3				43	09650405			65		
"		NW 1/4 of NW 1/4	" 4 less 1 ac. Sch.				43	60626390	372360		998750	250	333
Olof Olson		SW 1/4 of NW 1/4					39	35434270			434270	90	145
Olie E. Boots		SE 1/4 of NW 1/4					39	56434270			434270	90	145
O.C. Kindig		NE 1/4 of SW 1/4					39	38434270			434270	90	145
"		NW 1/4 of SW 1/4					39	33434270			434270	90	145
Apel W. Larson		SW 1/4 of SW 1/4					39	07434270			434270	90	145
Victor Larson		SE 1/4 of SW 1/4					39	11434270			434270	90	145
Henry Anderson		NE 1/4 of SE 1/4					40	58650405	465450		1115855	285	372
"		NW 1/4 of SE 1/4					40	49578360			578360	120	193
Emil Skovdahl		SW 1/4 of SE 1/4					40	84723450			723450	150	241
"		SE 1/4 of SE 1/4					41	06723450	558540		1281990	330	427
							64708	5505	1620		7125	2375	3509
								8841	1675		10515		
								8841	1675				

MAPLE TOWNSHIP

PERCENTAGE INCREASES AND DECREASES MADE BY COUNTY BOARD AND STATE TAX COMMISSION ON 1928 ASSESSMENT

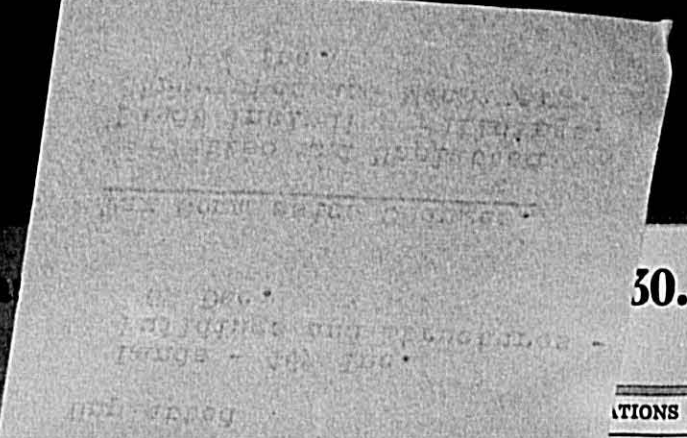
County Board:
Unplatted
73% Inc. on Lands
25% Inc. on Structures

Tax Commission:
NONE

Assessor's Return of Taxable Real Property in the Town of Maple, County of ...

Unplatted Real Estate—Assessed at 33 1-3 per cent of True and Full Value.

NAME OF OWNER	No. of School Dist.	DESCRIPTION	Number of Acres		ASSESSOR'S VALUATIONS										
			Acres	100ths	True and Full Value of Lands Exclusive of Structures and Improvements Dollars	STRUCTURES AND IMPROVEMENTS True and Full Value of Buildings and Other Structures Dollars	True and Full Value of Machinery Permanently Attached to Real Estate Dollars	Total Full Value of Lands Including all Structures, Improvements and Machinery Dollars	of Lands Including all Structures, Improvements and Machinery Dollars	as Equalized by Board of Review Dollars	as Equalized by the County Board Dollars	Assessed Value as Equalized by the Minnesota Tax Commission Dollars			
Adolph Jaffer	20	NE 1/4 of NE 1/4 Lot 1	39	57	602375	279270	181645	215							294
"		NW 1/4 of NE 1/4 " 2	41	37	602375		602375	125							201
Henry Anderson		SW 1/4 of NE 1/4	40		23650405		650405	135							217
Adolph Jaffer		SE 1/4 of NE 1/4 less 11 ac.	29	41	289180		289180	60							96
Henry Anderson		11 ac. of SE 1/4 of NE 1/4	11	04	14490		14490	30							48
Olie E. Boots		NE 1/4 of NW 1/4 Lot 3	43	09	650405		650405	135							217
"		NW 1/4 of NW 1/4 " 4 less 100. Sch.	43	60	626390	372360	998750	250							333
Claf Olson		SW 1/4 of NW 1/4	39	35	434270		434270	90							145
Olie E. Boots		SE 1/4 of NW 1/4	39	56	434270		434270	90							145
O.C. Kindig		NE 1/4 of SW 1/4	39	38	434270		434270	90							145
"		NW 1/4 of SW 1/4	39	33	434270		434270	90							145
Apel W. Larson		SW 1/4 of SW 1/4	39	07	434270		434270	90							145
Victor Larson		SE 1/4 of SW 1/4	39	11	434270		434270	90							145
Henry Anderson		NE 1/4 of SE 1/4	40	58	650405	465450	1115855	285							372
"		NW 1/4 of SE 1/4	40	49	578360		578360	120							193
Emil Skooldahl		SW 1/4 of SE 1/4	40	84	723450		723450	150							241
"		SE 1/4 of SE 1/4	41	06	723450	558540	1281990	330							427
			647	08	550.5	1620	7125	2375							3509
					8841	1675	10515								
					8841	1675									



UNPLATTED

PERSONAL

Assessor's Return of Taxable Real Property in the Town of Maple, County of Cass, Minn., for the Year 1930.

Unplatted Real Estate—Assessed at 33 1-3 per cent of True and Full Value.

MADE IN ST. CLOUD BY THE BILT. BOARD CO.

NAME OF OWNER	No. of School Dist.	DESCRIPTION					ASSESSOR'S VALUATIONS					EQUALIZED VALUATIONS		
		SUBDIVISION	Sec. or Lot	Twp. or Block	Range	Number of Acres Acres 100ths	True and Full Value of Lands Exclusive of Structures and Improvements Dollars	STRUCTURES AND IMPROVEMENTS		Total True and Full Value of Lands Including all Structures, Improvements and Machinery Dollars	Assessed Value of Lands Including all Structures, Improvements and Machinery Dollars	Assessed Value as Equalized by Board of Review Dollars	Assessed Value as Equalized by the County Board Dollars	Assessed Value as Equalized by the Minnesota Tax Commission Dollars
								True and Full Value of Buildings and Other Structures Dollars	True and Full Value of Machinery Permanently Attached to Real Estate Dollars					
<i>Ber J. Finke</i>	20	NE ¹ / ₄ of NE ¹ / ₄		2	136 30	45 44	578360	174120	702480	160		234		
"		NW ¹ / ₄ of NE ¹ / ₄				46 15	578360		578360	120		193		
<i>Martin Jorkelson</i>		SW ¹ / ₄ of NE ¹ / ₄				40	650405	388375	1038780	260		346		
<i>Olof Oleson</i>		SE ¹ / ₄ of NE ¹ / ₄				40	650405	465450	1115855	285		372		
<i>Martin Jorkelson</i>		NE ¹ / ₄ of NW ¹ / ₄		" 3		46 33	650405		650405	135		217		
<i>Danfred Hill</i>		NW ¹ / ₄ of NW ¹ / ₄		" 4		46 69	650405	78 75	728480	160		243		
<i>Geo. Findlay</i>		SW ¹ / ₄ of NW ¹ / ₄				40	434270		434270	90		145		
"		SE ¹ / ₄ of NW ¹ / ₄				40	434270		434270	90		145		
<i>L. E. Larson</i>		NE ¹ / ₄ of SW ¹ / ₄				40	626390		626390	130		209		
"		NW ¹ / ₄ of SW ¹ / ₄				40	626390		626390	130		209		
"		SW ¹ / ₄ of SW ¹ / ₄				40	650405		650405	135		217		
"		SE ¹ / ₄ of SW ¹ / ₄				40	650405	543525	1193930	310		398		
<i>Olof Oleson</i>		NE ¹ / ₄ of SE ¹ / ₄				40	482300		482300	100		161		
"		NW ¹ / ₄ of SE ¹ / ₄				40	482300		482300	100		161		
"		SW ¹ / ₄ of SE ¹ / ₄				40	554345		554345	115		185		
"		SE ¹ / ₄ of SE ¹ / ₄				40	530330		530330	110		177		
						664 61	5745	1545	7290 5515	2420		3612		
							9224	1598	10822					
							9126	1598						

Assessor's Return of Taxable Real Property in the Town of Maple, County of Cass, Minn., for the Year 1930.

Unplatted Real Estate—Assessed at 33 1-3 per cent of True and Full Value.

NAME OF OWNER	No. of School Dist.	DESCRIPTION					ASSESSOR'S VALUATIONS					EQUALIZED VALUATIONS		
		SUBDIVISION	Sec. or Lot	Twp. or Block	Range	Number of Acres Acres 100ths	True and Full Value of Lands Exclusive of Structures and Improvements Dollars	STRUCTURES AND IMPROVEMENTS		Total True and Full Value of Lands Including all Structures, Improvements and Machinery Dollars	Assessed Value of Lands Including all Structures, Improvements and Machinery Dollars	Assessed Value as Equalized by Board of Review Dollars	Assessed Value as Equalized by the County Board Dollars	Assessed Value as Equalized by the Minnesota Tax Commission Dollars
								True and Full Value of Buildings and Other Structures Dollars	True and Full Value of Machinery Permanently Attached to Real Estate Dollars					
<i>John Holten</i>	20	NE ¹ / ₄ of NE ¹ / ₄		3	136 30	48 34	626390	310300	936690	230		312		
"		NW ¹ / ₄ of NE ¹ / ₄		" 2		48 98	482300		482300	100		161		
<i>Geo. Findlay</i>		SW ¹ / ₄ of NE ¹ / ₄				40	602375		602375	125		201		
"		SE ¹ / ₄ of NE ¹ / ₄				40	578360	620600	1198960	320		399		
<i>J. M. Elden</i>		NE ¹ / ₄ of NW ¹ / ₄		" 3		49 51	530330		530330	110		177		
<i>Reinhold Beylin</i>		NW ¹ / ₄ of NW ¹ / ₄		" 4		50 11	554345		554345	115		185		
"		SW ¹ / ₄ of NW ¹ / ₄				40	482300		482300	100		161		
<i>Geo. Findlay</i>		SE ¹ / ₄ of NW ¹ / ₄				40	602375		602375	125		201		
<i>Dora Sands</i>		NE ¹ / ₄ of SW ¹ / ₄				40	410255		410255	85		137		
<i>Hull River Lbr. Co.</i>		NW ¹ / ₄ of SW ¹ / ₄				40	410255		410255	85		137		
<i>L. A. Clark</i>		SW ¹ / ₄ of SW ¹ / ₄				40	434270		434270	90		145		
<i>Dora Sands</i>		SE ¹ / ₄ of SW ¹ / ₄				40	434270		434270	90		145		
<i>L. E. Mortenson</i>		NE ¹ / ₄ of SE ¹ / ₄				40	578360		578360	120		193		
<i>Dora Sands</i>		NW ¹ / ₄ of SE ¹ / ₄				40	410255		410255	85		137		
<i>L. E. Mortenson</i>		SW ¹ / ₄ of SE ¹ / ₄				40	482300		482300	100		161		
"		SE ¹ / ₄ of SE ¹ / ₄				40	578360	78 75	656425	145		219		
						676 94	5100	975	6075 2555	2025		3071		
							8192	1008	9200					
							5191	1068						

4 Assessor's Return of Taxable Real Property in the Town of Maple, County of Cass, Minn., for the Year 1930.
 Unplatted Real Estate—Assessed at 33-1-3 per cent of True and Full Value.

5 Assessor's Return of Taxable Real Property in the Town of Maple, County of Cass, Minn., for the Year 1930.
 Unplatted Real Estate—Assessed at 33-1-3 per cent of True and Full Value.

NAME OF OWNER	No. of School Dist.	SUBDIVISION	DESCRIPTION						ASSESSOR'S VALUATIONS					EQUALIZED VALUATIONS		
			Sec. or Lot	Twp. or Block	Range	Number of Acres		True and Full Value of Land Exclusive of Structures and Improvements	STRUCTURES AND IMPROVEMENTS		Total True and Full Value of Land Including all Structures, Improvements and Machinery	Assessed Value of Land Including all Structures, Improvements and Machinery	Assessed Value as Equalized by Board of Review	Assessed Value as Equalized by the County Board	Assessed Value as Equalized by the Minnesota Tax Commission	
						Acres	100ths		True and Full Value of Buildings and Other Structures	True and Full Value of Machinery Permanently Attached to Real Estate						
Frank Anderson	20	NE 1/4 of NE 1/4	Lot 1	4	136.30	49.67	530.330	155.150	685.480	1.60			228			
"	"	NW 1/4 of NE 1/4	" 2			49.95	530.330		530.330	1.60			177			
Clifford W. & Carl R. Moon	"	SW 1/4 of NE 1/4				40	482.300		482.300	1.00			161			
"	"	SE 1/4 of NE 1/4				40	482.300		482.300	1.00			161			
Frank Anderson	un.	NE 1/4 of NW 1/4	" 3			50.17	530.330		530.330	1.10			177			
Aug. Stevens	"	NW 1/4 of NW 1/4	" 4			50.41	506.315		506.315	1.05			169			
"	"	SW 1/4 of NW 1/4				40	410.255		410.255	.85			137			
"	"	SE 1/4 of NW 1/4				40	410.255		410.255	.85			137			
Annetta Richmond	"	NE 1/4 of SW 1/4				40	410.255		410.255	.85			137			
R. E. Brown	"	NW 1/4 of SW 1/4				40	410.255		410.255	.85			137			
Annetta Richmond	"	SW 1/4 of SW 1/4				40	410.255		410.255	.85			137			
"	"	SE 1/4 of SW 1/4				40	410.255		410.255	.85			137			
Arvid Peterson	20	NE 1/4 of SE 1/4				40	458.285		458.285	.95			153			
Clifford W. & Carl R. Moon	"	NW 1/4 of SE 1/4				40	578.360		578.360	1.20			193			
"	"	SW 1/4 of SE 1/4				40	578.360	450.435	1028.795	2.65			343			
Arvid Peterson	"	SE 1/4 of SE 1/4				40	458.285		458.285	.95			153			
						680.20	4725	585	5310		1770		2737			
							7592	605	8197							

NAME OF OWNER	No. of School Dist.	SUBDIVISION	DESCRIPTION						ASSESSOR'S VALUATIONS					EQUALIZED VALUATIONS		
			Sec. or Lot	Twp. or Block	Range	Number of Acres		True and Full Value of Land Exclusive of Structures and Improvements	STRUCTURES AND IMPROVEMENTS		Total True and Full Value of Land Including all Structures, Improvements and Machinery	Assessed Value of Land Including all Structures, Improvements and Machinery	Assessed Value as Equalized by Board of Review	Assessed Value as Equalized by the County Board	Assessed Value as Equalized by the Minnesota Tax Commission	
						Acres	100ths		True and Full Value of Buildings and Other Structures	True and Full Value of Machinery Permanently Attached to Real Estate						
Olaf Erickson	un.	NE 1/4 of NE 1/4	Lot 1.	5	136.30	50.39	530.330	155.150	685.480	1.60			228			
"	"	NW 1/4 of NE 1/4	" 2			50.63	482.300		482.300	1.00			161			
R. E. Brown	"	SW 1/4 of NE 1/4				40	313.195		313.195	.65			104			
"	"	SE 1/4 of NE 1/4				40	313.195		313.195	.65			104			
Banker J. S. Lund Bank, Milwaukee	"	NE 1/4 of NW 1/4	" 3			51	747.465		747.465	1.55			249			
"	"	NW 1/4 of NW 1/4	" 4 less 2 ac. 24.0			49.23	723.450	248.240	971.690	2.30			374			
August J. Bode	"	SW 1/4 of NW 1/4				40	313.195		313.195	.65			104			
"	"	SE 1/4 of NW 1/4				40	313.195		313.195	.65			104			
"	"	NE 1/4 of SW 1/4				40	313.195		313.195	.65			104			
"	"	NW 1/4 of SW 1/4				40	313.195		313.195	.65			104			
"	"	SW 1/4 of SW 1/4				40	313.195		313.195	.65			104			
"	"	SE 1/4 of SW 1/4				40	313.195		313.195	.65			104			
R. E. Brown	"	NE 1/4 of SE 1/4				40	361.225		361.225	.75			120			
"	"	NW 1/4 of SE 1/4				40	361.225		361.225	.75			120			
"	"	SW 1/4 of SE 1/4				40	361.225		361.225	.75			120			
"	"	SE 1/4 of SE 1/4				40	361.225		361.225	.75			120			
						681.25	4005	390	4395		1465		2274			
							6430	403	6833							

8 Assessor's Return of Taxable Real Property in the Town of Maple, County of Cass, Minn., for the Year 1930.

Unplatted Real Estate—Assessed at 33 1-3 per cent of True and Full Value.

NAME OF OWNER	No. of School Dist.	DESCRIPTION	ASSESSOR'S VALUATIONS										EQUALIZED VALUATIONS			
			Sec. or Lot	Twp. or Block	Range	Number of Acres		True and Full Value of Lands Exclusive of Structures and Improvements Dollars	STRUCTURES AND IMPROVEMENTS		Total True and Full Value of Lands Including all Structures, Improvements and Machinery Dollars	Assessed Value of Lands Including all Structures, Improvements and Machinery Dollars	Assessed Value as Equalized by Board of Review Dollars	Assessed Value as Equalized by the County Board Dollars	Assessed Value as Equalized by the Minnesota Tax Commission Dollars	
						Acres	100ths		True and Full Value of Buildings and Other Structures Dollars	True and Full Value of Machinery Permanently Attached to Real Estate Dollars						
P. B. Nettleton	Nw.	NE 1/4 of NE 1/4	8	136	30	40		313195		313195	65		104			
"		NW 1/4 of NE 1/4				40		313195		313195	65		104			
"		SW 1/4 of NE 1/4				40		313195		313195	65		104			
"		SE 1/4 of NE 1/4				40		313195		313195	65		104			
Thos Craver		NE 1/4 of NW 1/4				40		313195		313195	65		104			
"		NW 1/4 of NW 1/4				40		313195		313195	65		104			
"		SW 1/4 of NW 1/4				40		313195		313195	65		104			
"		SE 1/4 of NW 1/4				40		313195		313195	65		104			
St. Bank of Byron, Minn.	20	NE 1/4 of SW 1/4				40		313195		313195	65		104			
"		NW 1/4 of SW 1/4				40		313195		313195	65		104			
"		SW 1/4 of SW 1/4				40		313195		313195	65		104			
"		SE 1/4 of SW 1/4				40		313195		313195	65		104			
"		NE 1/4 of SE 1/4				40		313195		313195	65		104			
"		NW 1/4 of SE 1/4				40		313195		313195	65		104			
"		SW 1/4 of SE 1/4				40		313195		313195	65		104			
"		SE 1/4 of SE 1/4				40		313195		313195	65		104			
						640		3120		3120	1040		1660			
								5008		5008						
								5011								

Assessor's Return of Taxable Real Property in the Town of Maple, County of Cass, Minn., for the Year 1930.

Unplatted Real Estate—Assessed at 33 1-3 per cent of True and Full Value.

NAME OF OWNER	No. of School Dist.	DESCRIPTION	ASSESSOR'S VALUATIONS										EQUALIZED VALUATIONS			
			Sec. or Lot	Twp. or Block	Range	Number of Acres		True and Full Value of Lands Exclusive of Structures and Improvements Dollars	STRUCTURES AND IMPROVEMENTS		Total True and Full Value of Lands Including all Structures, Improvements and Machinery Dollars	Assessed Value of Lands Including all Structures, Improvements and Machinery Dollars	Assessed Value as Equalized by Board of Review Dollars	Assessed Value as Equalized by the County Board Dollars	Assessed Value as Equalized by the Minnesota Tax Commission Dollars	
						Acres	100ths		True and Full Value of Buildings and Other Structures Dollars	True and Full Value of Machinery Permanently Attached to Real Estate Dollars						
Wm. H. Harwood	20	NE 1/4 of NE 1/4	9	136	30	40		313195		313195	65		104			
"		NW 1/4 of NE 1/4				40		313195		313195	65		104			
"		SW 1/4 of NE 1/4				40		313195		313195	65		104			
"		SE 1/4 of NE 1/4				40		313195		313195	65		104			
L. J. Field		NE 1/4 of NW 1/4				40		313195		313195	65		104			
"		NW 1/4 of NW 1/4				40		313195		313195	65		104			
"		SW 1/4 of NW 1/4				40		313195		313195	65		104			
"		SE 1/4 of NW 1/4				40		313195		313195	65		104			
Lust J. Anderson		NE 1/4 of SW 1/4				40		337210		337210	70		112			
"		NW 1/4 of SW 1/4				40		482300		482300	100		161			
"		SW 1/4 of SW 1/4				40		482300		482300	100		161			
"		SE 1/4 of SW 1/4				40		424270	93 90	527360	120		176			
Henry & Geo. S. Lively		NE 1/4 of SE 1/4				40		313195		313195	65		104			
"		NW 1/4 of SE 1/4				40		313195		313195	65		104			
"		SW 1/4 of SE 1/4				40		313195		313195	65		104			
"		SE 1/4 of SE 1/4				40		313195		313195	65		104			
						640		3420	90	3510	1170		1858			
								5491	93	5084						
								5493								

UNPLATTED

PERSONAL

10 Assessor's Return of Taxable Real Property in the Town of Maple, County of Cass, Minn., for the Year 1930.

Unplatted Real Estate—Assessed at 33 1-3 per cent of True and Full Value.

NAME OF OWNER	No. of School Dist.	DESCRIPTION	Sec. or Lot	Twp. or Block	Range	ASSESSOR'S VALUATIONS					EQUALIZED VALUATIONS					
						Number of Acres		True and Full Value of Land Exclusive of Structures and Improvements	STRUCTURES AND IMPROVEMENTS		Total True and Full Value of Land Including all Structures, Improvements and Machinery	Assessed Value of Land Including all Structures, Improvements and Machinery	Assessed Value as Equalized by Board of Review	Assessed Value as Equalized by the County Board	Assessed Value as Equalized by the Minnesota Tax Commission	
						Acres	100ths		True and Full Value of Buildings and Other Structures	True and Full Value of Machinery Permanently Attached to Real Estate						Dollars
N. O. Seltzer	20	NE 1/4 of NE 1/4	10	136	30	40	482300		482300	100	161					
C. J. Fredrickson		NW 1/4 of NE 1/4				40	434270		434270	90	145					
Ora Rendahl		SW 1/4 of NE 1/4				40	578360	419405	997765	255	332					
N. O. Seltzer		SE 1/4 of NE 1/4				40	679435	279270	978705	235	326					
State of Minnesota		NE 1/4 of NW 1/4				40	530330		530330	110	177					
"		NW 1/4 of NW 1/4				40	530330	279270	809600	200	270					
"		SW 1/4 of NW 1/4				40	337210		337210	70	112					
Ora Rendahl		SE 1/4 of NW 1/4				40	337210		337210	70	112					
"		NE 1/4 of SW 1/4				40	337210		337210	70	112					
Henry & Geo. Shipley		NW 1/4 of SW 1/4				40	337210		337210	70	112					
Lydin A. Sadrick		SW 1/4 of SW 1/4				40	434270		434270	90	145					
Marie & Peter Walberg		SE 1/4 of SW 1/4				40	434270		434270	90	145					
Ora Rendahl		NE 1/4 of SE 1/4				40	723450		723450	150	241					
"		NW 1/4 of SE 1/4				40	337210		337210	70	112					
Oscar Walberg		SW 1/4 of SE 1/4				40	482300		482300	100	161					
"		SE 1/4 of SE 1/4				40	482300		482300	100	161					
						640	11665	945	5610	1870	2824					
							7493	977	8470							

Assessor's Return of Taxable Real Property in the Town of Maple, County of Cass, Minn., for the Year 1930.

Unplatted Real Estate—Assessed at 33 1-3 per cent of True and Full Value.

NAME OF OWNER	No. of School Dist.	DESCRIPTION	Sec. or Lot	Twp. or Block	Range	ASSESSOR'S VALUATIONS					EQUALIZED VALUATIONS					
						Number of Acres		True and Full Value of Land Exclusive of Structures and Improvements	STRUCTURES AND IMPROVEMENTS		Total True and Full Value of Land Including all Structures, Improvements and Machinery	Assessed Value of Land Including all Structures, Improvements and Machinery	Assessed Value as Equalized by Board of Review	Assessed Value as Equalized by the County Board	Assessed Value as Equalized by the Minnesota Tax Commission	
						Acres	100ths		True and Full Value of Buildings and Other Structures	True and Full Value of Machinery Permanently Attached to Real Estate						Dollars
Amanda Philstrom	20	NE 1/4 of NE 1/4	11	136	30	40	434270		434270	90	145					
Lauris P. Solberg		NW 1/4 of NE 1/4				40	434270		434270	90	145					
"		SW 1/4 of NE 1/4				40	410255		410255	85	137					
Amanda P. Hilstrom		SE 1/4 of NE 1/4				40	410255		410255	85	137					
Perry Hand		NE 1/4 of NW 1/4				40	434270		434270	90	145					
"		NW 1/4 of NW 1/4				40	434270	155150	589420	140	196					
H. J. Wenker		SW 1/4 of NW 1/4				40	530330	372360	902690	230	301					
Perry Hand		SE 1/4 of NW 1/4				40	434270		434270	90	145					
E. W. Johnson		NE 1/4 of SW 1/4				40	482300		482300	100	161					
H. J. Wenker		NW 1/4 of SW 1/4				40	578360		578360	120	193					
E. W. Johnson		SW 1/4 of SW 1/4				40	434270		434270	90	145					
"		SE 1/4 of SW 1/4				40	482300		482300	100	161					
First Natl. Bk., Pequot		NE 1/4 of SE 1/4				40	434270		434270	90	145					
Faye C. Andrew		NW 1/4 of SE 1/4				40	434270		434270	90	145					
"		SW 1/4 of SE 1/4				40	434270		434270	90	145					
First Natl. Bk., Pequot		SE 1/4 of SE 1/4				40	482300	9390	575390	130	192					
						640	4530	600	5130	1710	2638					
							7280	620	7900							
							1075	620	7900							

Assessor's Return of Taxable Real Property in the Town of Maple, County of Cass, Minn., for the Year 1930.

Unplatted Real Estate—Assessed at 33 1-3 per cent of True and Full Value.

Table with columns: NAME OF OWNER, No. of School Dist., DESCRIPTION, SUBDIVISION, Sec. or Lot, Twp. or Block, Range, Number of Acres, ASSESSOR'S VALUATIONS (True and Full Value of Lands, Structures and Improvements, Total True and Full Value), EQUALIZED VALUATIONS (Assessed Value as Equalized by Board of Review, Assessed Value as Equalized by the County Board, Assessed Value as Equalized by the Minnesota Tax Commission).

Assessor's Return of Taxable Real Property in the Town of Maple, County of Cass, Minn., for the Year 1930.

Unplatted Real Estate—Assessed at 33 1-3 per cent of True and Full Value.

Table with columns: NAME OF OWNER, No. of School Dist., DESCRIPTION, SUBDIVISION, Sec. or Lot, Twp. or Block, Range, Number of Acres, ASSESSOR'S VALUATIONS (True and Full Value of Lands, Structures and Improvements, Total True and Full Value), EQUALIZED VALUATIONS (Assessed Value as Equalized by Board of Review, Assessed Value as Equalized by the County Board, Assessed Value as Equalized by the Minnesota Tax Commission).

Assessor's Return of Taxable Real Property in the Town of Maple, County of Cass, Minn., for the Year 1930.

Unplatted Real Estate—Assessed at 33 1-3 per cent of True and Full Value.

Table with columns: NAME OF OWNER, No. of School Dist., DESCRIPTION, ASSESSOR'S VALUATIONS (True and Full Value, Structures and Improvements, Total True and Full Value, Assessed Value), EQUALIZED VALUATIONS (Assessed Value as Equalized by Board of Review, Assessed Value as Equalized by the County Board, Assessed Value as Equalized by the Minnesota Tax Commission).

Assessor's Return of Taxable Real Property in the Town of Maple, County of Cass, Minn., for the Year 1930.

Unplatted Real Estate—Assessed at 33 1-3 per cent of True and Full Value.

Table with columns: NAME OF OWNER, No. of School Dist., DESCRIPTION, ASSESSOR'S VALUATIONS (True and Full Value, Structures and Improvements, Total True and Full Value, Assessed Value), EQUALIZED VALUATIONS (Assessed Value as Equalized by Board of Review, Assessed Value as Equalized by the County Board, Assessed Value as Equalized by the Minnesota Tax Commission).

Assessor's Return of Taxable Real Property in the Town of Maple, County of Cass, Minn., for the Year 1930.

Unplatted Real Estate—Assessed at 33 1-3 per cent of True and Full Value.

Table with columns: NAME OF OWNER, No. of School Dist., DESCRIPTION, ASSESSOR'S VALUATIONS (True and Full Value, Structures and Improvements, Total True and Full Value, Assessed Value), EQUALIZED VALUATIONS (Assessed Value as Equalized by Board of Review, Assessed Value as Equalized by the County Board, Assessed Value as Equalized by the Minnesota Tax Commission).

Assessor's Return of Taxable Real Property in the Town of Maple, County of Cass, Minn., for the Year 1930.

Unplatted Real Estate—Assessed at 33 1-3 per cent of True and Full Value.

Table with columns: NAME OF OWNER, No. of School Dist., DESCRIPTION, ASSESSOR'S VALUATIONS (True and Full Value, Structures and Improvements, Total True and Full Value, Assessed Value), EQUALIZED VALUATIONS (Assessed Value as Equalized by Board of Review, Assessed Value as Equalized by the County Board, Assessed Value as Equalized by the Minnesota Tax Commission).

Assessor's Return of Taxable Real Property in the Town of Maple, County of Cass, Minn., for the Year 1930.

Unplatted Real Estate—Assessed at 33 1-3 per cent of True and Full Value.

NAME OF OWNER	No. of School Dist.	DESCRIPTION	ASSESSOR'S VALUATIONS					EQUALIZED VALUATIONS				
			Sec. or Lot	Twp. or Block	Range	Number of Acres	True and Full Value of Lands Exclusive of Structures and Improvements	STRUCTURES AND IMPROVEMENTS	Total True and Full Value of Lands Including all Structures, Improvements and Machinery	Assessed Value of Lands Including all Structures, Improvements and Machinery	Assessed Value as Equalized by Board of Review	Assessed Value as Equalized by the County Board
W. E. Wheeler	20	NE 1/4 of NE 1/4	18	136	30	40	361225		361225	75		120
Martha S. Curo		NW 1/4 of NE 1/4				40	361225		361225	75		120
W. E. Wheeler		SW 1/4 of NE 1/4				40	361225		361225	75		120
"		SE 1/4 of NE 1/4				40	361225		361225	75		120
B. J. Hinkle		NE 1/4 of NW 1/4				40	241150		241150	50		80
"		NW 1/4 of NW 1/4			Lat 1	45 85	361225		361225	75		120
"		SW 1/4 of NW 1/4			" 2	45 95	361225		361225	75		120
"		SE 1/4 of NW 1/4				40	241150		241150	50		80
Christian Knutson		NE 1/4 of SW 1/4				40	385240		385240	80		128
W. E. Clark		NW 1/4 of SW 1/4			" 3	46 05	410255		410255	85		137
"		SW 1/4 of SW 1/4			" 4	46 15	410255		410255	85		137
Christian Knutson		SE 1/4 of SW 1/4				40	578360		578360	120		193
"		NE 1/4 of SE 1/4				40	385240		385240	80		128
"		NW 1/4 of SE 1/4				40	410255		410255	85		137
"		SW 1/4 of SE 1/4				40	578360	543525	1121885	295		374
"		SE 1/4 of SE 1/4				40	578360		578360	120		193
						664 00	3975	525	4500	1500		7307
							6382	543	6925			
							6384					

Assessor's Return of Taxable Real Property in the Town of Maple, County of Cass, Minn., for the Year 1930.

Unplatted Real Estate—Assessed at 33 1-3 per cent of True and Full Value.

NAME OF OWNER	No. of School Dist.	DESCRIPTION	ASSESSOR'S VALUATIONS					EQUALIZED VALUATIONS				
			Sec. or Lot	Twp. or Block	Range	Number of Acres	True and Full Value of Lands Exclusive of Structures and Improvements	STRUCTURES AND IMPROVEMENTS	Total True and Full Value of Lands Including all Structures, Improvements and Machinery	Assessed Value of Lands Including all Structures, Improvements and Machinery	Assessed Value as Equalized by Board of Review	Assessed Value as Equalized by the County Board
L. Siefke	20	NE 1/4 of NE 1/4	19	136	30	40	554345		554345	115		185
"		NW 1/4 of NE 1/4				40	554345	64255	818600	200		273
"		SW 1/4 of NE 1/4				40	482300		482300	100		161
"		SE 1/4 of NE 1/4				40	530330		530330	110		177
First St. Bk., Hewitt		NE 1/4 of NW 1/4				40	385240		385240	80		128
"		NW 1/4 of NW 1/4			Lat 1	46 45	434270		434270	90		145
Faye C. Andrus		SW 1/4 of NW 1/4			" 2	46 96	434270		434270	90		145
"		SE 1/4 of NW 1/4				40	385240		385240	80		128
Carrie S. Smithers		NE 1/4 of SW 1/4				40	385240		385240	80		128
Lula M. Boyer & W. A. Crowley		NW 1/4 of SW 1/4			" 3 } less	87 72	795495		795495	165		265
"		SW 1/4 of SW 1/4			" 4 } 7.72 rd.							
Carrie S. Smithers		SE 1/4 of SW 1/4				40	410255		410255	85		137
"		E. 7.72 rd. of Lot 3 & 4.				7 73	7245		7245	15		24
R. F. & J. H. Cornpart		NE 1/4 of SE 1/4				40	434270		434270	90		145
"		NW 1/4 of SE 1/4				40	410255		410255	85		137
"		SW 1/4 of SE 1/4				40	410255		410255	85		137
"		SE 1/4 of SE 1/4				40	410255		410255	85		137
						668 86	4410	255	4665	1555		2452
							7084	264	7349			
							7082	260				

Assessor's Return of Taxable Real Property in the Town of Maple, County of Cass, Minn., for the Year 1930.

Unplatted Real Estate—Assessed at 33 1-3 per cent of True and Full Value.

Table with columns: NAME OF OWNER, No. of School Dist., DESCRIPTION, SUBDIVISION, Sec. or Lot, Twp. or Block, Range, Number of Acres, ASSESSOR'S VALUATIONS (True and Full Value of Lands, Structures and Improvements, Total True and Full Value), and EQUALIZED VALUATIONS (Assessed Value as Equalized by Board of Review, Assessed Value as Equalized by the County Board, Assessed Value as Equalized by the Minnesota Tax Commission).

Assessor's Return of Taxable Real Property in the Town of Maple, County of Cass, Minn., for the Year 1930.

Unplatted Real Estate—Assessed at 33 1-3 per cent of True and Full Value.

Table with columns: NAME OF OWNER, No. of School Dist., DESCRIPTION, SUBDIVISION, Sec. or Lot, Twp. or Block, Range, Number of Acres, ASSESSOR'S VALUATIONS (True and Full Value of Lands, Structures and Improvements, Total True and Full Value), and EQUALIZED VALUATIONS (Assessed Value as Equalized by Board of Review, Assessed Value as Equalized by the County Board, Assessed Value as Equalized by the Minnesota Tax Commission).

22 Assessor's Return of Taxable Real Property in the Town of Maple, County of Cass, Minn., for the Year 1930.

Unplatted Real Estate—Assessed at 33 1-3 per cent of True and Full Value.

NAME OF OWNER	No. of School Dist.	DESCRIPTION	ASSESSOR'S VALUATIONS						EQUALIZED VALUATIONS						
			Sec. or Lot	Twp. or Block	Range	Number of Acres		True and Full Value of Lands Exclusive of Structures and Improvements Dollars	STRUCTURES AND IMPROVEMENTS		Total True and Full Value of Lands Including all Structures, Improvements and Machinery Dollars	Assessed Value of Lands Including all Structures, Improvements and Machinery Dollars	Assessed Value as Equalized by Board of Review Dollars	Assessed Value as Equalized by the County Board Dollars	Assessed Value as Equalized by the Minnesota Tax Commission Dollars
						Acres	100ths		True and Full Value of Buildings and Other Structures Dollars	Value of Machinery Permanently Attached to Real Estate Dollars					
Claude Gardner	20	NE 1/4 of NE 1/4	22	136	30	40	530330	465450	995780	260			332		
Andrew J. Peterson		NW 1/4 of NE 1/4				40	337210		337210	70			112		
"		SW 1/4 of NE 1/4				40	385240		385240	80			128		
Claude Gardner		SE 1/4 of NE 1/4 Less d. 15 ac.				25	241150		241150	50			80		
F. E. Larsen		d. 15 ac. of SE 1/4 of NE 1/4				15	169105		169105	35			56		
Walter W. Bonik		NE 1/4 of NW 1/4				40	337210		337210	70			112		
John Bergquist		NW 1/4 of NW 1/4				40	482300		482300	100			161		
Nels A. Bergquist		SW 1/4 of NW 1/4				40	337210		337210	70			112		
Walter W. Bonik		SE 1/4 of NW 1/4				40	337210		337210	70			112		
Mrs. Sarah Hanson		NE 1/4 of SW 1/4				40	458285		458285	95			153		
Emma L. Hyl		NW 1/4 of SW 1/4				40	530330	124120	654450	150			218		
"		SW 1/4 of SW 1/4				40	434270		434270	90			145		
Mrs. Sarah Hanson		SE 1/4 of SW 1/4				40	578360	217210	795570	190			265		
C. A. Lundberg		NE 1/4 of SE 1/4				40	482300		482300	100			161		
Mrs. Sarah Hanson		NW 1/4 of SE 1/4				40	482300		482300	100			161		
"		SW 1/4 of SE 1/4				40	530330		530330	110			177		
C. A. R. Lundberg		SE 1/4 of SE 1/4				40	482300	310300	792600	200			264		
						640	4440	1080	5520				2749		
							7131	1116	8247	1840					
							7131	1117							

Assessor's Return of Taxable Real Property in the Town of Maple, County of Cass, Minn., for the Year 1930. 23

Unplatted Real Estate—Assessed at 33 1-3 per cent of True and Full Value.

NAME OF OWNER	No. of School Dist.	DESCRIPTION	ASSESSOR'S VALUATIONS						EQUALIZED VALUATIONS						
			Sec. or Lot	Twp. or Block	Range	Number of Acres		True and Full Value of Lands Exclusive of Structures and Improvements Dollars	STRUCTURES AND IMPROVEMENTS		Total True and Full Value of Lands Including all Structures, Improvements and Machinery Dollars	Assessed Value of Lands Including all Structures, Improvements and Machinery Dollars	Assessed Value as Equalized by Board of Review Dollars	Assessed Value as Equalized by the County Board Dollars	Assessed Value as Equalized by the Minnesota Tax Commission Dollars
						Acres	100ths		True and Full Value of Buildings and Other Structures Dollars	Value of Machinery Permanently Attached to Real Estate Dollars					
Lustav A. Pohl	20	NE 1/4 of NE 1/4	23	136	30	40	699435	372360	1071795	265			357		
Alfred Lund		NW 1/4 of NE 1/4				40	578360	155150	733510	170			244		
"		SW 1/4 of NE 1/4				40	578360		578360	120			193		
Lustav A. Pohl		SE 1/4 of NE 1/4				40	699435		699435	145			233		
Georgiana Monson		NE 1/4 of NW 1/4				40	434270		434270	90			145		
Emma Halverson		NW 1/4 of NW 1/4				40	434270		434270	90			145		
"		SW 1/4 of NW 1/4				40	482300	217210	699510	170			233		
Georgiana Monson		SE 1/4 of NW 1/4				40	434270		434270	90			145		
Marie R. Breher		NE 1/4 of SW 1/4				40	530330		530330	110			177		
Jessie Loman		NW 1/4 of SW 1/4				40	434270		434270	90			145		
"		SW 1/4 of SW 1/4				40	578360	279270	857630	210			286		
Marie R. Breher		SE 1/4 of SW 1/4				40	578360	186180	764540	180			255		
Mary Roebke		NE 1/4 of SE 1/4				40	434270		434270	90			145		
O. Monson		NW 1/4 of SE 1/4				40	699435		699435	145			233		
"		SW 1/4 of SE 1/4				40	699435		699435	145			233		
Mary Roebke		SE 1/4 of SE 1/4				40	434270		434270	90			145		
						640	5430	1170	6600	2200			3314		
							8724	1209	9933						
							8721	1210							

Unplatted Real Estate—Assessed at 33 1-3 per cent of True and Full Value.

NAME OF OWNER	No. of School Dist.	DESCRIPTION	ASSESSOR'S VALUATIONS					EQUALIZED VALUATIONS					
			Sec. or Lot	Twp. or Block	Range	Number of Acres	True and Full Value of Land Exclusive of Structures and Improvements	STRUCTURES AND IMPROVEMENTS		Assessed Value of Land Including all Structures, Improvements and Machinery	Assessed Value as Equalized by Board of Review	Assessed Value as Equalized by the County Board	Assessed Value as Equalized by the Minnesota Tax Commission
								Value of Buildings and Other Structures	Value of Machinery Permanently Attached to Real Estate				
W. J. Stinson	20	NE 1/4 of NE 1/4	24	136	30	40	578360		578360	120	193		
"		NW 1/4 of NE 1/4				40	578360		578360	120	193		
"		SW 1/4 of NE 1/4				40	578360	465450	1043810	270	348		
"		SE 1/4 of NE 1/4				40	578360		578360	120	193		
F. Bressemer		NE 1/4 of NW 1/4				40	482300		482300	100	161		
August Pohl		NW 1/4 of NW 1/4				40	506315	279270	785585	195	262		
F. Bressemer		SW 1/4 of NW 1/4				40	699435		699435	145	233		
"		SE 1/4 of NW 1/4				40	482300		482300	100	161		
First Natl. Bk., Deposit		NE 1/4 of SW 1/4				40	482300		482300	100	161		
F. Bressemer		NW 1/4 of SW 1/4				40	650405	450435	1100840	280	367		
Mary Roebke		SW 1/4 of SW 1/4				40	434270		434270	90	145		
Minneapolis Trust Co.		SE 1/4 of SW 1/4				40	410255		410255	85	137		
Ray C. Stinson		NE 1/4 of SE 1/4				40	434270		434270	90	145		
Minneapolis Trust Co.		NW 1/4 of SE 1/4				40	482300		482300	100	161		
"		SW 1/4 of SE 1/4				40	410255		410255	85	137		
"		SE 1/4 of SE 1/4				40	434270		434270	90	145		
						640	5115	1155	6270	2090	3142		
							8217	1194	9411				
							8715	1190					

Unplatted Real Estate—Assessed at 33 1-3 per cent of True and Full Value.

NAME OF OWNER	No. of School Dist.	DESCRIPTION	ASSESSOR'S VALUATIONS					EQUALIZED VALUATIONS					
			Sec. or Lot	Twp. or Block	Range	Number of Acres	True and Full Value of Land Exclusive of Structures and Improvements	STRUCTURES AND IMPROVEMENTS		Assessed Value of Land Including all Structures, Improvements and Machinery	Assessed Value as Equalized by Board of Review	Assessed Value as Equalized by the County Board	Assessed Value as Equalized by the Minnesota Tax Commission
								Value of Buildings and Other Structures	Value of Machinery Permanently Attached to Real Estate				
Carl G. Day	20	NE 1/4 of NE 1/4	25	136	30	40	434270		434270	90	145		
Ed. Erickson		NW 1/4 of NE 1/4				40	530330		530330	110	177		
"		SW 1/4 of NE 1/4				40	530330		530330	110	177		
Carl G. Day		SE 1/4 of NE 1/4				40	434270		434270	90	145		
Ed. Erickson		NE 1/4 of NW 1/4				40	626290	341330	967720	240	322		
F. Bressemer		NW 1/4 of NW 1/4				37	554345		554345	115	185		
E. M. Osterlund		SW 1/4 of NW 1/4				40	434270		434270	90	145		
"		SE 1/4 of NW 1/4				40	434270		434270	90	145		
Katherine Wemter		NE 1/4 of SW 1/4				40	699435		699435	145	233		
"		NW 1/4 of SW 1/4				40	699435	620600	1319035	345	440		
"		SW 1/4 of SW 1/4				40	530330		530330	110	177		
"		SE 1/4 of SW 1/4				40	530330		530330	110	177		
J. M. Day		NE 1/4 of SE 1/4				40	482300		482300	100	161		
"		NW 1/4 of SE 1/4				40	434270		434270	90	145		
"		SW 1/4 of SE 1/4				40	482300		482300	100	161		
"		SE 1/4 of SE 1/4				40	482300	543525	1025825	275	342		
						637	5175	1455	6630	2210	3277		
							8314	1504	9818				
							8314	1504					

Assessor's Return of Taxable Real Property in the Town of Maple, County of Cass, Minn., for the Year 1930.

Unplatted Real Estate—Assessed at 33 1-3 per cent of True and Full Value.

Table with columns: NAME OF OWNER, No. of School Dist., DESCRIPTION, ASSESSOR'S VALUATIONS (STRUCTURES AND IMPROVEMENTS, Total True and Full Value of Lands, Assessed Value of Lands), EQUALIZED VALUATIONS (Assessed Value as Equalized by Board of Review, Assessed Value as Equalized by the County Board, Assessed Value as Equalized by the Minnesota Tax Commission).

Assessor's Return of Taxable Real Property in the Town of Maple, County of Cass, Minn., for the Year 1930.

Unplatted Real Estate—Assessed at 33 1-3 per cent of True and Full Value.

Table with columns: NAME OF OWNER, No. of School Dist., DESCRIPTION, ASSESSOR'S VALUATIONS (STRUCTURES AND IMPROVEMENTS, Total True and Full Value of Lands, Assessed Value of Lands), EQUALIZED VALUATIONS (Assessed Value as Equalized by Board of Review, Assessed Value as Equalized by the County Board, Assessed Value as Equalized by the Minnesota Tax Commission).

Assessor's Return of Taxable Real Property in the Town of Maple, County of Cass, Minn., for the Year 1930.
 Unplatted Real Estate—Assessed at 33 1-3 per cent of True and Full Value.

NAME OF OWNER	No. of School Dist.	DESCRIPTION			ASSESSOR'S VALUATIONS					EQUALIZED VALUATIONS			
		SUBDIVISION	Sec. or Lot	Twp. or Block	Number of Acres		True and Full Value of Lands Exclusive of Structures and Improvements Dollars	STRUCTURES AND IMPROVEMENTS		Assessed Value of Lands Including all Structures, Improvements and Machinery Dollars	Assessed Value as Equalized by Board of Review Dollars	Assessed Value as Equalized by the County Board Dollars	Assessed Value as Equalized by the Minnesota Tax Commission Dollars
					Acres	100ths		True and Full Value of Buildings and Other Structures Dollars	True and Full Value of Machinery Permanently Attached to Real Estate Dollars				
C. A. Schneider & Chas. Joengies	20	NE 1/4 of NE 1/4	28	136	30	40	410 25 5		410 25 5	8 5		137	
Midwest Farms Co.		NW 1/4 of NE 1/4				40	410 25 5	93 90	50 33 4 5	11 5		168	
Earl Babbitt & Lettie Foster		SW 1/4 of NE 1/4				40	361 22 5		361 22 5	7 5		120	
Midwest Farms Co.		SE 1/4 of NE 1/4				40	361 22 5		361 22 5	7 5		120	
Gustav Sieffe		NE 1/4 of NW 1/4				40	602 37 5		602 37 5	12 5		201	
Julius P. Stowell		NW 1/4 of NW 1/4				40	530 33 0		530 33 0	11 0		177	
"		SW 1/4 of NW 1/4				40	530 33 0		530 33 0	11 0		177	
Earl Babbitt & Lettie Foster		SE 1/4 of NW 1/4				40	482 30 0		482 30 0	10 0		161	
"		NE 1/4 of SW 1/4				40	385 24 0		385 24 0	8 0		128	
Julius P. Stowell		NW 1/4 of SW 1/4				40	434 27 0	171 16 5	605 43 5	14 5		202	
"		SW 1/4 of SW 1/4				40	434 27 0		434 27 0	9 0		145	
Herbert G. Hoover		SE 1/4 of SW 1/4				40	337 21 0		337 21 0	7 0		112	
Ben J. Fint		NE 1/4 of SE 1/4				40	337 21 0		337 21 0	7 0		112	
Earl Babbitt & Lettie Foster		NW 1/4 of SE 1/4				40	337 21 0		337 21 0	7 0		112	
C. J. Frederickson		SW 1/4 of SE 1/4				40	434 27 0		434 27 0	9 0		145	
Henry W. Hanson		SE 1/4 of SE 1/4				40	530 33 0	78 7 5	608 40 5	13 5		203	
						640	4305	330	4635	154 5		2420	
							691 4	330	7256				
							691 4	301					

Assessor's Return of Taxable Real Property in the Town of Maple, County of Cass, Minn., for the Year 1930.
 Unplatted Real Estate—Assessed at 33 1-3 per cent of True and Full Value.

NAME OF OWNER	No. of School Dist.	DESCRIPTION			ASSESSOR'S VALUATIONS					EQUALIZED VALUATIONS			
		SUBDIVISION	Sec. or Lot	Twp. or Block	Number of Acres		True and Full Value of Lands Exclusive of Structures and Improvements Dollars	STRUCTURES AND IMPROVEMENTS		Assessed Value of Lands Including all Structures, Improvements and Machinery Dollars	Assessed Value as Equalized by Board of Review Dollars	Assessed Value as Equalized by the County Board Dollars	Assessed Value as Equalized by the Minnesota Tax Commission Dollars
					Acres	100ths		True and Full Value of Buildings and Other Structures Dollars	True and Full Value of Machinery Permanently Attached to Real Estate Dollars				
Peter J. Jewel	20	NE 1/4 of NE 1/4	29	136	30	40	530 33 0		530 33 0	11 0		177	
"		NW 1/4 of NE 1/4				40	434 27 0		434 27 0	9 0		145	
"		SW 1/4 of NE 1/4				40	434 27 0		434 27 0	9 0		145	
"		SE 1/4 of NE 1/4				40	482 30 0		482 30 0	10 0		161	
Faye C. Andrus		NE 1/4 of NW 1/4				40	337 21 0		337 21 0	7 0		112	
"		NW 1/4 of NW 1/4				40	337 21 0		337 21 0	7 0		112	
G. I. Prettyman		SW 1/4 of NW 1/4				40	337 21 0		337 21 0	7 0		112	
"		SE 1/4 of NW 1/4				40	337 21 0		337 21 0	7 0		112	
H. J. Dahlman		NE 1/4 of SW 1/4				40	337 21 0		337 21 0	7 0		112	
"		NW 1/4 of SW 1/4				40	434 27 0		434 27 0	9 0		145	
"		SW 1/4 of SW 1/4				40	337 21 0		337 21 0	7 0		112	
"		SE 1/4 of SW 1/4				40	434 27 0		434 27 0	9 0		145	
"		NE 1/4 of SE 1/4				40	434 27 0		434 27 0	9 0		145	
"		NW 1/4 of SE 1/4				40	337 21 0		337 21 0	7 0		112	
Wm. J. Lott		SW 1/4 of SE 1/4				40	578 36 0		578 36 0	12 0		193	
Elizabeth J. Hemming		SE 1/4 of SE 1/4				40	530 33 0		530 33 0	11 0		177	
						640	4140		4140	138 0		227	
							6647		6647				
							6649		6649				

Unplatted Real Estate—Assessed at 33 1-3 per cent of True and Full Value.

NAME OF OWNER	No. of School Dist.	DESCRIPTION	ASSESSOR'S VALUATIONS					EQUALIZED VALUATIONS						
			Sec. or Lot	Twp. or Block	Range	Number of Acres		True and Full Value of Land Exclusive of Structures and Improvements	STRUCTURES AND IMPROVEMENTS		Assessed Value of Land Including all Structures, Improvements and Machinery	Assessed Value as Equalized by Board of Review	Assessed Value as Equalized by the County Board	Assessed Value as Equalized by the Minnesota Tax Commission
						Acres	100ths		True and Full Value of Buildings and Other Structures	True and Full Value of Permanently Attached to Real Estate				
Adolph Hagen	20	NE¼ of NE¼	30	136	30	40		482300		482300	100	161		
P. P. Rendahl		NW¼ of NE¼				40	482300		482300	100	161			
M. Olafson & John Olson		SW¼ of NE¼				40	482300		482300	100	161			
Adolph Hagen		SE¼ of NE¼				40	554345	248240	802585	195	267			
P. P. Rendahl		NE¼ of NW¼				40	434270		434270	90	145			
Mils Peterson		NW¼ of NW¼				48	28	482300		482300	100	161		
"		SW¼ of NW¼				48	37	506315		506315	105	169		
M. Olafson & John Olson		SE¼ of NW¼				40		482300		482300	100	161		
"		NE¼ of SW¼				40	602375	419405	1021780	260	340			
Carrie Olafson		NW¼ of SW¼				48	46	530330		530330	110	177		
Frank Devick		SW¼ of SW¼				48	55	506315		506315	105	169		
"		SE¼ of SW¼				40		482300		482300	100	161		
Adolph Hagen		NE¼ of SE¼				40		482300		482300	100	161		
M. Olafson & John Olson		NW¼ of SE¼				40	602375		602375	125	201			
Frank Devick		SW¼ of SE¼				40	578360		578360	120	193			
Adolph Hagen		SE¼ of SE¼				40	578360		578360	120	193			
						67266	5145	645	5790	1930	2781			
							8264	667	7205					
							8263	667	8931					

Unplatted Real Estate—Assessed at 33 1-3 per cent of True and Full Value.

NAME OF OWNER	No. of School Dist.	DESCRIPTION	ASSESSOR'S VALUATIONS					EQUALIZED VALUATIONS						
			Sec. or Lot	Twp. or Block	Range	Number of Acres		True and Full Value of Land Exclusive of Structures and Improvements	STRUCTURES AND IMPROVEMENTS		Assessed Value of Land Including all Structures, Improvements and Machinery	Assessed Value as Equalized by Board of Review	Assessed Value as Equalized by the County Board	Assessed Value as Equalized by the Minnesota Tax Commission
						Acres	100ths		True and Full Value of Buildings and Other Structures	True and Full Value of Permanently Attached to Real Estate				
State Bk. of Danvers	20	NE¼ of NE¼	31	136	30	40		361225		361225	75	120		
"		NW¼ of NE¼				40		361225		361225	75	120		
"		SW¼ of NE¼				40		361225		361225	75	120		
"		SE¼ of NE¼				40		361225		361225	75	120		
Ruth L. Skioseth		NE¼ of NW¼				40		361225		361225	75	120		
"		NW¼ of NW¼				48	28	241150		241150	50	80		
"		SW¼ of NW¼				47	63	337210		337210	70	112		
"		SE¼ of NW¼				40		361225		361225	75	120		
Alfred Olson		NE¼ of SW¼				40		578360		578360	120	193		
"		NW¼ of SW¼				46	98	626390	419405	1045795	265	348		
"		SW¼ of SW¼				46	33	626390		626390	130	209		
C. B. Muntagh		SE¼ of SW¼				40		361225		361225	75	120		
"		NE¼ of SE¼				40		337210		337210	70	112		
"		NW¼ of SE¼				40		361225		361225	75	120		
"		SW¼ of SE¼				40		361225		361225	75	120		
"		SE¼ of SE¼				40		337210		337210	70	112		
						66922	3945	405	4350	1450	2746			
							6331	419	775					
							6336		6750					

Unplatted Real Estate—Assessed at 33 1-3 per cent of True and Full Value.

Table with columns: NAME OF OWNER, No. of School Dist., DESCRIPTION, No. of Acres, ASSESSOR'S VALUATIONS, and EQUALIZED VALUATIONS.

Unplatted Real Estate—Assessed at 33 1-3 per cent of True and Full Value.

Table with columns: NAME OF OWNER, No. of School Dist., DESCRIPTION, No. of Acres, ASSESSOR'S VALUATIONS, and EQUALIZED VALUATIONS.

PERSONAL

Assessor's Return of Taxable Real Property in the Town of Maple, County of Cass, Minn., for the Year 1930.

Unplatted Real Estate—Assessed at 33 1-3 per cent of True and Full Value.

Table with columns: NAME OF OWNER, No. of School Dist., DESCRIPTION, ASSESSOR'S VALUATIONS (True and Full Value of Lands, Structures and Improvements, Total True and Full Value), EQUALIZED VALUATIONS (Assessed Value as Equalized by Board of Review, Assessed Value as Equalized by the County Board, Assessed Value as Equalized by the Minnesota Tax Commission).

Assessor's Return of Taxable Real Property in the Town of Maple, County of Cass, Minn., for the Year 1930.

Unplatted Real Estate—Assessed at 33 1-3 per cent of True and Full Value.

Table with columns: NAME OF OWNER, No. of School Dist., DESCRIPTION, ASSESSOR'S VALUATIONS (True and Full Value of Lands, Structures and Improvements, Total True and Full Value), EQUALIZED VALUATIONS (Assessed Value as Equalized by Board of Review, Assessed Value as Equalized by the County Board, Assessed Value as Equalized by the Minnesota Tax Commission).

Assessor's Return of Taxable Real Property in the Town of Maple, County of Cass, Minn., for the Year 1930.

Unplatted Real Estate—Assessed at 33 1-3 per cent of True and Full Value.

Table with columns: NAME OF OWNER, No. of School Dist., DESCRIPTION, ASSESSOR'S VALUATIONS, EQUALIZED VALUATIONS. Includes entries for Anna De Groat, Andrew Berkedal, John W. Cole, Edd O. Anderson, Iva Petterson, Rev. Lotfred Petterson.

Handwritten summary calculations: 640, 4250, 585, 4935, 6984, 6786, 605, 7589, 1645, 2529.

Assessor's Return of Taxable Real Property in the Town of Maple, County of Cass, Minn., for the Year 1930.

Unplatted Real Estate—Assessed at 33 1-3 per cent of True and Full Value.

Table with columns: NAME OF OWNER, No. of School Dist., DESCRIPTION, ASSESSOR'S VALUATIONS, EQUALIZED VALUATIONS. Includes entries for August Groat, Herman Hecht, P. B. Middleton & E. Kronberg, Ella Kamnety, J. C. Duxbury.

Handwritten summary calculations: 640, 4590, 540, 5130, 7376, 7372, 559, 558, 7935, 1710, 2650.

Assessor's Return of Taxable Real Property in the Town of Maple, County of Cass, Minn., for the Year 1930.

Unplatted Real Estate—Assessed at 33 1-3 per cent of True and Full Value.

Table with columns: NAME OF OWNER, No. of School Dist., DESCRIPTION, ASSESSOR'S VALUATIONS (STRUCTURES AND IMPROVEMENTS, Total True and Full Value of Lands), EQUALIZED VALUATIONS. Includes entries for Fred B. Stull, Peter J. Kulig, John Zupschwerdt, and Mal Goodborn.

640 4170 5110 4710 1570 2473
23 386.68 6698 558 7256 286199

Assessor's Return of Taxable Real Property in the _____ of _____, County of Cass, Minn., for the Year 1930.

Unplatted Real Estate—Assessed at 33 1-3 per cent of True and Full Value.

Table with columns: NAME OF OWNER, No. of School Dist., DESCRIPTION, ASSESSOR'S VALUATIONS, EQUALIZED VALUATIONS. This page is mostly blank with some faint entries.

UNPLATTED

PERSONAL

Assessor's Return of Taxable Real Property in the _____ of _____, County of Cass, Minn., for the Year 1930.

Unplatted Real Estate—Assessed at 33 1-3 per cent of True and Full Value.

Table with columns: NAME OF OWNER, No. of School Dist., DESCRIPTION, SUBDIVISION, Sec. or Lot, Twp. or Block, Range, Number of Acres, ASSESSOR'S VALUATIONS (STRUCTURES AND IMPROVEMENTS, True and Full Value of Lands, etc.), EQUALIZED VALUATIONS.

NE 1/4 of NE 1/4
NW 1/4 of NE 1/4
SW 1/4 of NE 1/4
SE 1/4 of NE 1/4
NE 1/4 of NW 1/4
NW 1/4 of NW 1/4
SW 1/4 of NW 1/4
SE 1/4 of NW 1/4
NE 1/4 of SW 1/4
NW 1/4 of SW 1/4
SW 1/4 of SW 1/4
SE 1/4 of SW 1/4
NE 1/4 of SE 1/4
NW 1/4 of SE 1/4
SW 1/4 of SE 1/4
SE 1/4 of SE 1/4

Assessor's Return of Taxable Real Property in the _____ of _____, County of Cass, Minn., for the Year 1930.

Unplatted Real Estate—Assessed at 33 1-3 per cent of True and Full Value.

Table with columns: NAME OF OWNER, No. of School Dist., DESCRIPTION, SUBDIVISION, Sec. or Lot, Twp. or Block, Range, Number of Acres, ASSESSOR'S VALUATIONS (STRUCTURES AND IMPROVEMENTS, True and Full Value of Lands, etc.), EQUALIZED VALUATIONS.

NE 1/4 of NE 1/4
NW 1/4 of NE 1/4
SW 1/4 of NE 1/4
SE 1/4 of NE 1/4
NE 1/4 of NW 1/4
NW 1/4 of NW 1/4
SW 1/4 of NW 1/4
SE 1/4 of NW 1/4
NE 1/4 of SW 1/4
NW 1/4 of SW 1/4
SW 1/4 of SW 1/4
SE 1/4 of SW 1/4
NE 1/4 of SE 1/4
NW 1/4 of SE 1/4
SW 1/4 of SE 1/4
SE 1/4 of SE 1/4

UNPLATTED

PERSONAL

Assessor's Return of Taxable Real Property in the _____ of _____, County of Cass, Minn., for the Year 1930.

Unplatted Real Estate—Assessed at 33 1-3 per cent of True and Full Value.

Table with columns: NAME OF OWNER, No. of School Dist., DESCRIPTION, ASSESSOR'S VALUATIONS (STRUCTURES AND IMPROVEMENTS, Total True and Full Value of Lands, Assessed Value), EQUALIZED VALUATIONS (Assessed Value as Equalized by Board of Review, Assessed Value as Equalized by the County Board, Assessed Value as Equalized by the Minnesota Tax Commission).

Tabular Statement of Real Property Assessment of the Town of Maple, County of Cass, Minnesota, 1930

Table with columns: Amount Brought Forward from Page, Number of Acres of Land Assessed (Acres, 100ths), ASSESSOR'S VALUATIONS (True and Full Value of Lands, STRUCTURES AND IMPROVEMENTS, Total True and Full Value of Lands, Assessed Value), EQUALIZED VALUATIONS (Assessed Value as Equalized by Board of Review, Assessed Value as Equalized by the County Board, Assessed Value as Equalized by the Minnesota Tax Commission), REMARKS.

