

ASSESSMENT & TAX LIST - 1960

Loon Lake

Return showing items shown as added by Section 170(b)(1)(C) and this is the amount of the tax credit for the year ending 1980

SUMMARY OF TAX COLLECTION

Original Levy	\$ 7632.00	
Additions	\$	
		\$ 7635.00
Abatements	\$ 14.42	
		\$ 7617.58

COLLECTIONS

March Settlement	\$ 1364.68	
June Settlement	\$ 3568.57	
November Settlement	\$ 1749.53	
January Settlement	\$ 105.30	\$ 6289.08
		\$
Over Collected	\$	
Under Collected	\$	
Delinquent	\$ 829.50	\$ 829.50
Total		\$ 7617.58

Real Estate

Personal

TABULAR SCHEDULE OF VALUATIONS,

LEVIED IN THE Town of Loun Lake

RATES AND TAXES

COUNTY OF CASS, STATE OF MINNESOTA

Main data table with columns: VALUATION BY SCHOOL DISTRICTS, RATE OF STATE TAXES, RATE OF COUNTY TAXES, RATE OF TOWN TAXES, SCHOOL TAXES, TAXES LEVIED (LOCAL 1 MILL AND SPECIAL SCHOOL TAXES BY DISTRICTS, ALL OTHER TAXES).

Assessed Value Homestead, Non-Homestead, Total. Rural, Other, Personal Property. Total 11,857.

C-2 1333, Other 4454

Total Taxes Real Estate 6014.98, Pers. Prop. 1617.02, Total 7632.00

Total Number of Acres 8650.57, State of Minnesota, COUNTY OF CASS, Auditor of said County and State aforesaid, showing the valuation of all the taxable property, in the Town of Loun Lake...

SEAL

Real Estate

Personal

COLLECTIONS OF TAXES OF 1960

Town of *Lone Lake*

CASS COUNTY, MINNESOTA

FUNDS	MARCH SETTLEMENT 19.6.1	JUNE SETTLEMENT 19.6.1	NOV. SETTLEMENT 19.6.1	Amount Collected from Nov. 19... to First Monday in Jan. 19...	REDUCTIONS	Total Reductions and Collect-1	BALANCE UNCOLLECTED	ADDITIONS	Total Uncollected to First Monday in January, 19...
State-Non-Homestead	2704	4295	1552	19					
State-Homestead	2659	8640	4127	39					
County Revente.	16210	42261	20894	1280					
County Road and Bridge.	9736	25382	12549	769					
County Welfare.	28254	73657	36418	2231					
County Bond and Interest, PERA	2740	7145	3533	216					
Civ. Def.	112	292	144	09					
Co. Nurse	974	2537	1255	77					
R. + B. Bldg.	974	2537	1255	77					
Town Revenue.	3894	10153	5020	308					
Town Road and Bridge.	10710	27920	13804	846					
Town Fire	2434	6345	3136	192					
Town State Loan									
School Local 1 Mill.									
School Special.	13018	33730	16275	961					
School State Loan.									
Deficiency	32830	83973	41767	2465					
Tuition C. O.	4814	12327	6129	363					
Transportation									
PERA	1519	3851	1922	112					
Bldg.	2643	6672	3333	191					
Tuition		3927	1332	311					
B. + S.		571	194	45					
Agri. Assn	243	635	314	19					
	136468	356857	174953	10530					

	SCHOOL DISTRICT NO.	LOCAL 1 MILL	SPECIAL	STATE LOAN	Deficiency	C. O.	PERA	Bldg.	Tuition	B. + S.	TOTALS
MARCH SETTLEMENT	186 a 186 7A		11323 1695		30544 2286	4479 335	1413 106	2459 184			50218 4606
	Totals		13018		32830	4814	1519	2643			54824
JUNE SETTLEMENT	186-a 186-7A 185-a		28710 4015 1010		77445 5415 1110	11358 794 175	3583 250 18	6236 436	3927	571	127335 10910 6811
	Totals		33735		83973	12327	3751	6672	3927	571	175056
NOVEMBER SETTLEMENT	186 a 185 a 186 7A		14757 343 1175		39807 376 1584	5838 59 232	1842 06 74	3205 128	1332	194	65449 2310 3193
	Totals		16275		41767	6129	1922	3333	1332	194	70952
NOVEMBER to JANUARY	185a 186a		80 881		88 2377	14 349	02 110	191	311	45	540 3908
	Totals		961		2465	363	112	191	311	45	4448
ADDITIONS											
	Totals										
REDUCTIONS											
	Totals										

Real Estate

Personal

Assessment Roll and Tax List of Real Property in the Town of Iron Lake

Cass County, Minnesota, for Taxes for the Year 1960.

Table with columns for Property Description, True and Full Valuations (Rural, All Other, Machinery, Seasonal/Recreational), Assessed Valuations (Homebased, Total Assessed), Valuations by School Districts, Taxes (Including State, Local, Special), and Payment/Collection details (Paid, When Paid, Settlement, Penalties).

Real Estate

Personal

Assessment Roll and Tax List of Real Property in the Town of Loon Lake

Cass County, Minnesota, for Taxes for the Year 1960.

Form 507 MILLER-DAVIS CO., MINNEAPOLIS * Indicate Type of Property: R-Residential, C-Commercial, I-Industrial, U-Utility, F-Farm, L-Lakeshore, T-Timber, M-Mineral

Table with columns: IN WHOSE NAME ASSESSED, DESCRIPTION OF PROPERTY, TRUE AND FULL VALUATIONS, ASSESSED VALUATIONS, VALUATIONS BY SCHOOL DISTRICTS AS EQUALIZED BY DEPARTMENT OF TAXATION, TAX INCLUDING STATE HOMESTEAD, SPECIAL TAXES, TOTAL TAXES, PAID, WHEN PAID, Number of Receipt, March Settlement 1961, June Settlement 1961, November Settlement 1961, Collections to First Monday in January 1962, Delinquent on First Monday in January 1962, Total Delinquent Tax and Penalty, REMARKS.

Assessment Roll and Tax List of Real Property in the Town of Iron Lake

Cass County, Minnesota, for Taxes for the Year 1960.

PLUM BLD MILLER FALL CO., MINNEAPOLIS * Indicate Type of Property: R-Residential, C-Commercial, I-Industrial, U-Utility, F-Farm, L-Lakeshore, T-Timber, M-Mineral

Table with columns: IN WHOSE NAME ASSESSED, SUBDIVISION, ACRES, TRUE AND FULL VALUATIONS (LAND, BUILDINGS, MACHINERY, TOTAL), ASSESSED VALUATIONS (RURAL, ALL OTHER, MACHINERY, Seasonal and Recreational Cabins, TOTAL ASSESSED VALUE, Total Assessed Value as Equalized by the Board of Review, FINAL EQUALIZED VALUE), VALUATIONS BY SCHOOL DISTRICTS AS EQUALIZED BY DEPARTMENT OF TAXATION, Tax Including State Homestead, State Tax on Non-Homestead, SPECIAL TAXES, TOTAL TAXES, PAID, WHEN PAID, Number of Receipt, March Settlement 1961, June Settlement 1961, Penalty, November Settlement 1961, Penalty, Collections to First Monday in January 1962, Penalty, Delinquent on First Monday in January 1962, Total Delinquent Tax and Penalty, REMARKS.

Real Estate

Personal

Assessment Roll and Tax List of Real Property in the Town of Down Lake

Cass County, Minnesota, for Taxes for the Year 1960.

* Indicate Type of Property: R-Residential, C-Commercial, I-Industrial, U-Utility, F-Farm, L-Lakeshore, T-Timber, M-Mineral

Table with columns: IN WHOSE NAME ASSESSED, DESCRIPTION OF PROPERTY, TRUE AND FULL VALUATIONS, ASSESSED VALUATIONS, VALUATIONS BY SCHOOL DISTRICTS, TAXES, PAID, WHEN PAID, Number of Receipt, March Settlement, June Settlement, November Settlement, Collections to First Monday in January, Delinquent on First Monday in January, Total Delinquent Tax and Penalty, REMARKS.

Assessment Roll and Tax List of Real Property in the town of Loom Lake

* Indicate Type of Property: R-Residential, C-Commercial, I-Industrial, U-Utility, F-Farm, L-Lakeshore, T-Timber, M-Mineral

Cass County, Minnesota, for Taxes for the Year 1960.

IN WHOSE NAME ASSESSED	SUBDIVISION	Sec. or Lot	Town or Block	Rtg.	Number of Acres of Land	No. School District	Ind. rate Homestead Yes or No	Agri. or Seas. Use Yes or No	Ind. rate Type of Property	TRUE AND FULL VALUATIONS														SOLD FOR TAXES	VALUATIONS BY SCHOOL DISTRICTS AS EQUALIZED BY DEPARTMENT OF TAXATION						SPECIAL TAXES	SPECIAL TAXES	TOTAL TAXES	PAID	WHEN PAID	Number of Receipt	March Settlement 1961	June Settlement 1961	November Settlement 1961	Penalty	Collections to First Monday in January 1962	Penalty	Delinquent on First Monday in January 1962	Total Delinquent Tax and Penalty	REMARKS											
										LAND Exclusive of Structures and Improvements		BUILDINGS and Other Structures	MACHINERY Permanently Attached to Real Estate	TOTAL True and Full Value	RURAL					ALL OTHER					TOTAL ASSESSED VALUE	Total Assessed Value as Equalized by the Board of Review	FINAL EQUALIZED VALUE	District No.	District No.	District No.																District No.	Rate Mills	Rate Mills	Rate Mills	Rate Mills	Mills	Mills	Mills	Mills	Mills	Mills
										Homestead Up to \$4,000 20%	Over \$4,000 and Non-Homestead 23 3/4%				Timber Land Class 3c 20%	Homestead Up to \$4,000 25%	Over \$4,000 and Non-Homestead 40%	Seasonal and Recreational Cabins 33 1/4%	Seasonal and Recreational Cabins 33 1/4%																																					
										Dollars	Dollars				Dollars	Dollars	Dollars	Dollars	Dollars																																					
<i>Emanuel E. + Cecelia Buschmann</i>					40	186	70	40	F	475	170	585	195	195	107	195	107	107	85	105	105	105	195	5350	136	5486	PAID IN FULL OCT 3 1 1961 / 8382	5486	192							15767																				
<i>Victor + Lois M. Larson</i>					40	40	40	F	235	300	535	107	107	107	85	107	85	85	105	105	105	107	2936		2936	PAID IN FULL OCT 2 5 1961									8023																					
<i>Victor + Lois Larson</i>					40	40	40	F	425		425	85	85	85	85	85	85	85	105	105	105	85	2332		2332	PAID IN FULL OCT 2 5 1961																														
<i>Victor + Lois Larson</i>					40	70	40	F	315		315	105	105	105	85	105	85	85	105	105	105	105	2882	74	2956	PAID IN FULL OCT 3 1 1961 / 8382	2956	103							15767																					
<i>Roy Hartwig</i>					40	40	40	F	250		250	50	50	50	50	50	50	50	105	105	105	50	1372		1372	2 nd HALF PAID OCT 3 1 1961									8032																					
<i>Victor + Lois Larson</i>					40	40	40	F	375	525	900	180	180	180	180	180	180	80	36	36	36	180	4940		4940	1 st HALF PAID OCT 3 1 1961			4254																											
<i>Victor + Lois Larson</i>					40	40	40	F	400		400	80	80	80	80	80	80	80	105	105	105	80	2196		2196	2 nd HALF PAID OCT 3 1 1961									8033																					
<i>Harry + Evelyn Hedges</i>					40	40	40	T	200		200	40	40	40	40	40	40	40	105	105	105	40	1098		1098	1 st HALF PAID OCT 3 1 1961									8031																					
<i>The Northwest Paper Co.</i>					40	40	40	F	295	195	490	98	98	98	98	98	98	98	105	105	105	98	2690		2690	1 st HALF PAID OCT 3 1 1961																														
<i>Aho. O. Schulberg</i>					40	70	40	F	384		384	128	128	128	80	128	80	80	105	105	105	128	3512	70	3602	2 nd HALF PAID OCT 1 6 1961									8030																					
<i>Aho. O. Schulberg</i>					40	70	40	F	240		240	80	80	80	80	80	80	80	105	105	105	80	2196	56	2252	1 st HALF PAID OCT 1 6 1961																														
<i>Aho. O. Schulberg</i>					40	70	40	F	300		300	100	100	100	100	100	100	100	105	105	105	100	2744	70	2814	2 nd HALF PAID OCT 1 6 1961			7584	7584																										
<i>Aho. O. Schulberg</i>					40	70	40	F	343	350	693	231	231	231	231	231	231	231	105	105	105	231	6338	162	6500	1 st HALF PAID OCT 1 6 1961																														
					560				4357	1540	5897	676	839	839	839	839	839	839	105	105	105	839	41594	588	42162				13732	28430																										

Assessment Roll and Tax List of Real Property in the Town of Down of Leon Lake

* Indicate Type of Property: R-Residential, C-Commercial, I-Industrial, U-Utility, F-Farm, L-Lakeshore, T-Timber, M-Mineral

Cass County, Minnesota, for Taxes for the Year 1960.

Table with columns: IN WHOSE NAME ASSESSED, DESCRIPTION OF PROPERTY, TRUE AND FULL VALUATIONS, ASSESSED VALUATIONS, VALUATIONS BY SCHOOL DISTRICTS AS EQUALIZED BY DEPARTMENT OF TAXATION, TAX INCLUDING STATE HOMESTEAD, STATE TAX ON NON-HOMESTEAD, SPECIAL TAXES, TOTAL TAXES, PAID, WHEN PAID, Number of Receipt, March Settlement 1961, July Settlement 1961, Penalty, No. of Settlement 1961, Penalty, Collections to First Monday in January 1962, Delinquent on First Monday in January 1962, Total Delinquent Tax and Penalty, REMARKS.

Assessment Roll and Tax List of Real Property in the Town of Spoon Lake of Spoon Lake

* Indicate Type of Property: R-Residential, C-Commercial, I-Industrial, U-Utility, F-Farm, L-Lakeshore, T-Timber, M-Mineral

Table with columns: IN WHOSE NAME ASSESSED, SUBDIVISION, No. School District, Ind. Rate Homestead, Agr. or Seas. Rec. or No., Ind. Type of Property, TRUE AND FULL VALUATIONS (LAND, BUILDINGS, MACHINERY, TOTAL), ASSESSED VALUATIONS (RURAL, ALL OTHER, MACHINERY, Seasonal and Recreational Cabins, TOTAL ASSESSED VALUE), Total Assessed Value as Equalized by the Board of Review, FINAL EQUALIZED VALUE.

Cass County, Minnesota, for Taxes for the Year 1960.

Table with columns: SOLID FOR TAXES, VALUATIONS BY SCHOOL DISTRICTS AS EQUALIZED BY DEPARTMENT OF TAXATION (District No., Rate, Mills), Tax Including State Homestead, State Tax on Non-Homestead, SPECIAL TAXES, TOTAL TAXES, PAID, WHEN PAID, Number of Receipt, March Settlement 1961, June Settlement 1961, Penalty, November Settlement 1961, Penalty, Collections to First Monday in January 1962, Penalty, Delinquent on First Monday in January 1962, Total Delinquent Tax and Penalty, REMARKS.

Assessment Roll and Tax List of Real Property in the Down of Iron Lake

Cass County, Minnesota, for Taxes for the Year 1960.

Form 501-D MILLER-DAVIS CO., MINNEAPOLIS * Indicate Type of Property: R-Residential, C-Commercial, I-Industrial, U-Utility, F-Farm, L-Lakeshore, T-Timber, M-Mineral

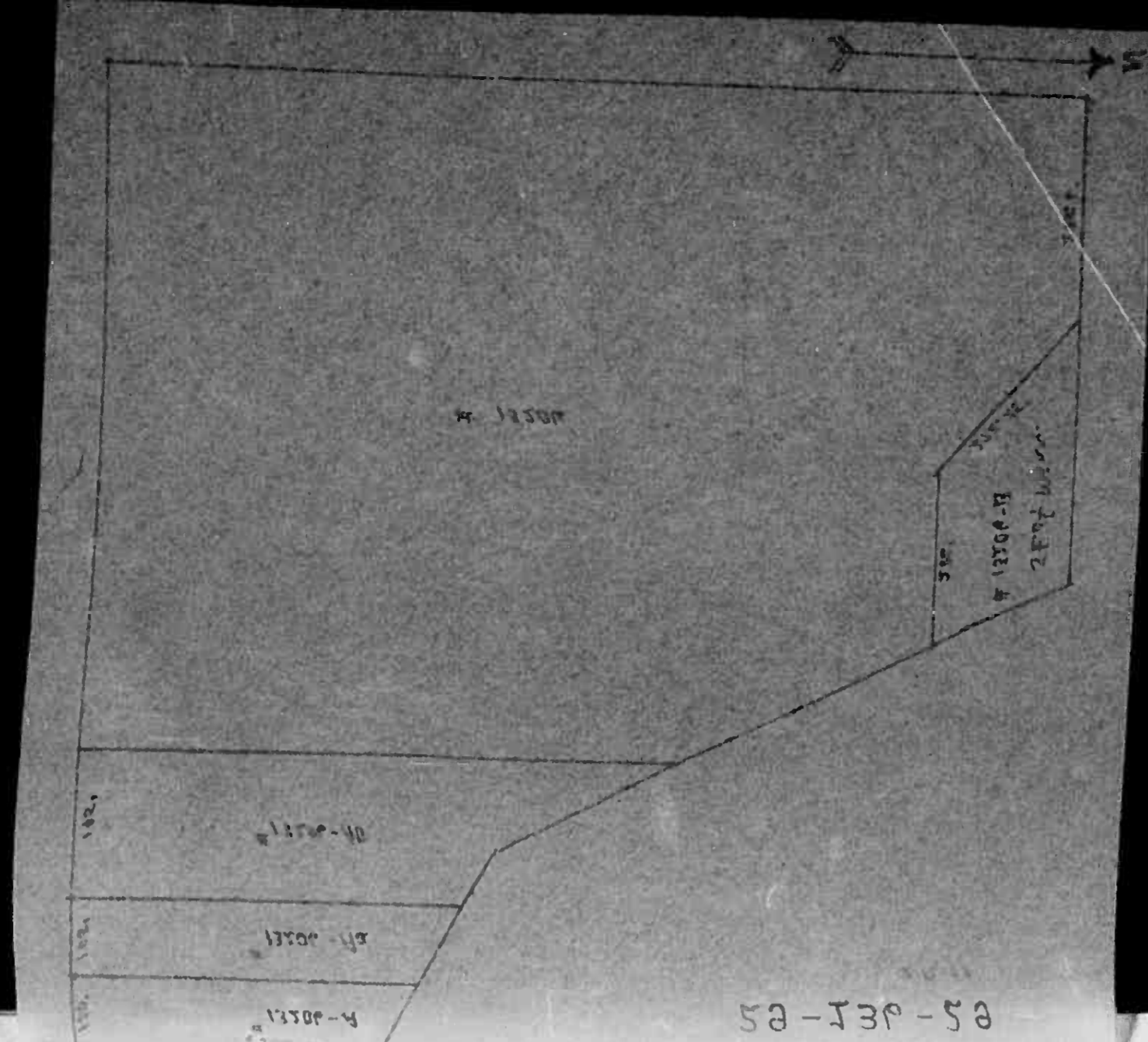
Table with columns: IN WHOSE NAME ASSESSED, DESCRIPTION OF PROPERTY, TRUE AND FULL VALUATIONS, ASSESSED VALUATIONS, VALUATIONS BY SCHOOL DISTRICTS AS EQUALIZED BY DEPARTMENT OF TAXATION, Tax including State Homestead, State Tax on Non-Homestead, SPECIAL TAXES, TOTAL TAXES, PAID, WHEN PAID, Number of Receipt, March Settlement 1961, June Settlement 1961, Penalty, November Settlement 1961, Penalty, Collections to First Monday in January 1962, Delinquent on First Monday in January 1962, Total Delinquent Tax and Penalty, REMARKS.

Real Estate

Personal

Assessment Roll and Tax List of Real Property in the Town of Down of Scott County, Minnesota

* Indicate Type of Property: R-Residential, C-Commercial, I-Industrial, U-Utility, F-Farm, L-Lakeshore, T-Timber, M-Mineral



Cass County, Minnesota, for Taxes for the Year 1961.

Table with columns: IN WHOSE NAME ASSESSED, DESCRIPTION OF PROPERTY, THUR AND FULL VALUATIONS, ASSESSED VALUATIONS, VALUATIONS BY SCHOOL DISTRICTS AS EQUALIZED BY DEPARTMENT OF TAXATION, TAXES, PAID, WHEN PAID, Number of Receipt, March Settlement 1961, June Settlement 1961, November Settlement 1961, Collections to First Monday in January 1961, Delinquent on First Monday in January 1962, Total Delinquent Tax and Penalty, REMARKS.

Real Estate

Personal

Assessment Roll and Tax List of Real Property in the Town of Lion Lake

* Indicate Type of Property: R-Residential, C-Commercial, I-Industrial, U-Utility, F-Farm, L-Lakeshore, T-Timber, M-Mineral

Cass County, Minnesota, for Taxes for the Year 1960.

Table with columns: IN WHOSE NAME ASSESSED, SUBDIVISION, TRUE AND FULL VALUATIONS, ASSESSED VALUATIONS, VALUATIONS BY SCHOOL DISTRICTS AS EQUALIZED BY DEPARTMENT OF TAXATION, TAXES, PAID, WHEN PAID, Number of Receipt, March Settlement, June Settlement, November Settlement, Collections to First Monday in January, Delinquent on First Monday in January, Total Delinquent Tax and Penalty, REMARKS.

Real Estate

Personal

Assessment Roll and Tax List of Real Property in the Town of Loon Lake, Cass County, Minnesota, for Taxes for the Year 1960.

* Indicate Type of Property: R-Residential, C-Commercial, I-Industrial, U-Utility, F-Farm, L-Lakeshore, T-Timber, M-Mineral

Table with columns for IN WHOSE NAME ASSESSED, DESCRIPTION OF PROPERTY, TRUE AND FULL VALUATIONS, ASSESSED VALUATIONS, VALUATIONS BY SCHOOL DISTRICTS AS EQUALIZED BY DEPARTMENT OF TAXATION, and various tax and payment details.

Assessment Roll and Tax List of Real Property in the Town of Loom Lake

* Indicate Type of Property: R-Residential, C-Commercial, I-Industrial, U-Utility, F-Farm, L-Lakeshore, T-Timber, M-Mineral

Form 600 MILLER-DAVIS CO., MINNEAPOLIS

Real Estate

IN WHOSE NAME ASSESSED	DESCRIPTION OF PROPERTY				No. School District	Indicate Home-lead Yes or No	Agricult. or Forest, Yes or No	Indicate Type of Property	TRUE AND FULL VALUATIONS				ASSESSED VALUATIONS							FINAL EQUALIZED VALUE	REMARKS			
	SUBDIVISION	Sec. or Lot	Town or Block	No. of Acres of Land					LAND Exclusive of Structures and Improvements	BUILDINGS and Other Structures	MACHINERY Permanently Attached to Real Estate	TOTAL Type and Full Value	RURAL		ALL OTHER			MACHINERY Permanently Attached to Real Estate	Seasonal and Recreational Cabins			TOTAL ASSESSED VALUE	Total Assessed Value as Equalized by the Board of Review	
													Homestead Up to \$4,000	Over \$4,000 and Non-Homestead	Timber Land Class 3e	Homestead Up to \$4,000	Over \$4,000 and Non-Homestead							Over \$4,000 and Non-Homestead
													20%	33 1/3%	20%	25%	40%							33 1/3%
Phoe Newman				36			T	215		20		235	47			47								
John + Martha Schultz				40			T	180				180	36			36								
"				20			T	200				200	40			40								
Arthur G. + Josephine M. Picha				40			T	244		200		444	148			148								
Edith M. + Claude G. Lease 1/2 int.				20			F	216			72	216	72			72								
Edith Marie Lease 1/2 int.				40			F	318			106	318	106			106								
Margaret M. Erickson				40			T	159			53	159	53			53								
State of Minnesota																								
The Northwest Paper Co.				20			T	159			53	159	53			53								
State of Minnesota																								
State of Minnesota																								
State of Minnesota																								
State of Minnesota																								
Edith Marie Lease 1/2 int.				40			F	345		375		690	138			138								
Edith M. + Claude G. Lease 1/2 int.				40			T	190				190	38			38								
John H. + Martha Schultz				40			T	220				220	44			44								
State of Minnesota																								
John H. + Martha Schultz				40			T	220				220	44			44								
				396				2446		565		3011	548	132		1775								

Cass County, Minnesota, for Taxes for the Year 1960.

SOLD FOR TAXES	VALUATIONS BY SCHOOL DISTRICTS AS EQUALIZED BY DEPARTMENT OF TAXATION						Tax Including State Homestead	State Tax on Non-Homestead	SPECIAL TAXES	SPECIAL TAXES	TOTAL TAXES	PAID	WHEN PAID	Number of Receipt	March Settlement 1961	June Settlement 1961	Penalty	November Settlement 1961	Penalty	Collections to First Monday in January 1962	Penalty	Delinquent on First Monday in January 1962	Total Delinquent Tax and Penalty	REMARKS
	District No.	District No.	District No.	District No.	District No.	District No.																		
	Rate	Rate	Rate	Rate	Rate	Rate																		
	Mills	Mills	Mills	Mills	Mills	Mills																		
1							1562			1562	1	PAID IN FULL MAY 24 1961	12187		1562								8071	
2							1196			1196	2											1196	1316	
3							1328			1328	3											1328	1461	
4							4916	104		5020	4	PAID IN FULL FEB 21 1961	3964	5020									8072	
5											5													
6							2392	50		2442	6	2nd HALF PAID OCT 31 1961	19366										8073	
7							3520	74		3594	7	PAID IN FULL APR 21 1961											8074	
8							1760	38		1798	8	PAID IN FULL APR 21 1961	8482											
9											9													
10							1760	38		1798	10	PAID IN FULL MAY 23 1961	10375										14514	
11											11													
12											12													
13											13													
14											14													
15											15													
16							4584			4584	16	2nd HALF PAID OCT 31 1961	19366										8075	
17							1262			1262	17	1st HALF PAID APR 21 1961	8469										1262	1388
18											18													
19							1462			1462	19												1462	1608
20							25742	304		26046	20												5248	

Personal

