

1924
TAX LIST
LIMA

Auditor's Office, Cass County, Minn.

I, A. A. Gater, Auditor of Cass County, and State of Minnesota, do hereby certify that the following is a correct list of the taxes levied on the Real and Personal Property in the Wronship of Lima for the year 1924.

Witness my hand and official seal this 5 day of January, 1925.

(SEAL) A. A. Gater County Auditor.
By _____ Deputy.

Treasurer's Office, Cass County, Minn.

Received this, the first Monday (being the 5th day) of January, A. D. 1925, of A. A. Gater, Auditor of Cass County, Minnesota, the Tax List of all taxable Real and Personal Property in the Town of Lima in said County, for the year A. D. 1924, as specified above, and amounting to Fifteen thousand ninety six and 11/100 DOLLARS.

H. J. McKeown County Treasurer.
By A. M. Deputy.

Office of County Treasurer, Cass County, Minn.

To A. A. Gater, County Auditor, Jan 4 1926

Sir: I herewith return to you the Tax List for the Town of Lima in said Cass County, for the year 1924, heretofore received from you. I certify that I have compared the same with the duplicate receipts in your office, and have written opposite the amount of each tax so received the words "One Half Paid," or "Paid in Full," as the case may be, and the number of my receipt given in discharge of said tax, and each tract or lot of Real Property against which the taxes remain unpaid is delinquent for said year.

H. J. McKeown County Treasurer.
By A. M. Deputy.

Auditor's Office, Cass County, Minn.

Received of Mr. J. McKeown, County Treasurer, the Tax List for the Town of Lima in said County of Cass, for the year 1924.

A. A. Gater County Auditor.
By _____ Deputy.

Tax List of Real Property in the Town of Linn of Linn County

71931—LOUIS FLOOD CO., ST. PAUL

Cass County, Minnesota, for Taxes for the Year 1924

IN WHOSE NAME ASSESSED	TO WHOM TRANSFERED	Sold for Taxes	SUBDIVISION	Sec. or Lot	Town or Block	Rng.	No. of Acres		VALUATION	No. School Dist.	General Taxes	School District				Highway Ditch No.	Ditch No.	Ditch No.	Ditch No.	TOTAL TAXES	PAID	WHEN PAID	No. of Receipt	March Settlement	June Settlement	Penalty	November Settlement	Penalty	Collections to First Monday in January	Penalty	Delinquent on First Monday in January	REMARKS					
							Acres	100's				No.	Rate	No.	Rate																		No.	Rate	No.	Rate	No.
									Dollars																												
									\$	cts.	\$	cts.	\$	cts.	\$	cts.	\$	cts.	\$	cts.	\$	cts.	Month	Day	Year	\$	cts.	\$	cts.	\$	cts.	\$	cts.	\$	cts.	\$	cts.
Immigration Land Co.			NE 1/4 of NE 1/4	5	141	25	38	34	148	21										2388																	
"			NW 1/4 of NE 1/4					38	30											2388																	
J. B. Larson			SW 1/4 of NE 1/4					39	10											2388																	
The Sheldon Co.			SE 1/4 of NE 1/4					40												2388																	
H. P. Roberts			NE 1/4 of NW 1/4					38	26											2388																	
"			NW 1/4 of NW 1/4					38	22											4452																	
Immigration Land Co.			SW 1/4 of NW 1/4					40												2597																	
Thos. H. Simmons			SE 1/4 of NW 1/4					39												2452																	
"			NE 1/4 of SW 1/4																																		
"			NW 1/4 of SW 1/4					52	75											3517																	
"			SW 1/4 of SW 1/4					13	25											920																	
"			SE 1/4 of SW 1/4																																		
"			NE 1/4 of SE 1/4					40												2597																	
"			NW 1/4 of SE 1/4					24	75											1662																	
"			SW 1/4 of SE 1/4					52	30											3517																	
"			SE 1/4 of SE 1/4																																		
									496	27									31654																		

31654

13770

8204

2nd Half Paid OCT 12 1925
1st Half Paid MAY 20 1925
2nd Half Paid OCT 12 1925
1st Half Paid MAY 20 1925
Paid in Full OCT 31 1925

Paid 427/46 by Del Rec #20185
2nd Half Paid OCT 12 1925
1st Half Paid MAY 20 1925

Paid in Full MAY 29 1925
Paid in Full MAY 29 1925

2nd Half Paid OCT 12 1925
1st Half Paid MAY 20 1925
2nd Half Paid OCT 12 1925
1st Half Paid MAY 20 1925
Paid in Full MAY 29 1925

Tax List of Real Property in the Town of Linn of Lincoln

71931-LOUIS F. DOW CO., ST. PAUL

IN WHOSE NAME ASSESSED	TO WHOM TRANSFERRED	Sold for Taxes	SUBDIVISION	Sec. or Lot	Town or Block	Rng.	No. of Acres		VALUATION	No. School Dist.	General Taxes	School District					
							Acres	100's				No. 1	No. 2	No. 3	No. 4		
									Dollars		\$ cts.	\$ cts.	\$ cts.	\$ cts.			
A. R. Roberts			N E ¼ of N E ¼	6	141	25		38.43				172	01	2775			
J. C. Hessian			N W ¼ of N E ¼					38.88				172		2775			
Charles Johnson	Fred R. Lamborn		S W ¼ of N E ¼					40				376		6066			
H. P. Roberts			S E ¼ of N E ¼					40				183		2952			
J. C. Hessian			N E ¼ of N W ¼					39.33				195		3146			
Dennis Esten	Bevelia Johnson		N W ¼ of N W ¼					38.94				224		3614			
Christina Smith	Otto J. Miller		S W ¼ of N W ¼					38.44				388		6260			
J. H. Selberg			S E ¼ of N W ¼					40				459		7405			
Eugene Miller			S of SW ¼ of NW ¼ NW ¼					5				54		871			
"			N E ¼ of S W ¼					40				206		3323			
E. R. Young			N W ¼ of S W ¼					37.72				229		3694			
"			S W ¼ of S W ¼					37				200		3227			
"			S E ¼ of S W ¼					40				200		3227			
J. E. Lundrigan			N E ¼ of S E ¼					40				177		2856			
Robt. L. Norton & Frank B. Clark			N W ¼ of S E ¼					40				376		6066			
"			S W ¼ of S E ¼					40				200		3227			
J. B. Larson			S E ¼ of S E ¼					40				138		2226			
							628.74	394.7					637.10				

Cass County, Minnesota, for Taxes for the Year 1924

Highway Ditch No.	Ditch No.	Ditch No.	Ditch No.	TOTAL TAXES	PAID	WHEN PAID	No. of Receipt	March Settlement	June Settlement	Penalty	November Settlement	Penalty	Collections to First Monday in January	Penalty	Delinquent on First Monday in January	REMARKS
				2775	1	Paid 2/27/25 by Del. Rec. #20185										
				2775	2	2nd Half Paid OCT 31 1925 11732										
				6066	3	1st Half Paid MAY 29 1925 5237				1388 ✓		1387				
				2952	4	Paid in Full FEB 21 1925 1151 ✓ 6066										
					5	Paid 2/27/25 by Del. Rec. #20185										
				3146	6	2nd Half Paid OCT 31 1925 11732 ✓										
				3614	7	1st Half Paid MAY 29 1925 5237 ✓				1573 ✓		1573				
				6260	8	Paid 7/15/25 by Del. Rec. #20066										
				7405	9	2nd Half Paid OCT 31 1925 10859 ✓				3130 ✓		3130				
				871	10	1st Half Paid MAY 29 1925 5237 ✓										
				3323	11	1st Half Paid APR 28 1925 3316 ✓				3703 ✓		3702				
				3694	12	Paid in Full FEB 14 1925 795 ✓ 871										
				5227	13	2nd Half Paid OCT 31 1925 17258 ✓				1662 ✓		1661				
				3227	14	1st Half Paid MAY 2 1925 3403 ✓										
					15	2nd Half Paid OCT 31 1925 11078 ✓										
				2856	16	1st Half Paid MAY 29 1925 7930 ✓				5074 ✓		5074				
				6066	17	2nd Half Paid OCT 31 1925										
				3227	18	1st Half Paid MAY 29 1925										
				2226	19										6976 6066 9.10	
					20										3711 3227 4.84	
				637.10					6937	16530		16527				

Tax List of Real Property in the Town of Linn of Iowa

71931-LOUIS F. DOW CO., ST. PAUL

IN WHOSE NAME ASSESSED	TO WHOM TRANSFERED	Sold for Taxes	SUBDIVISION	Sec. or Lot	Town or Block	Rng.	No. of Acres		VALUATION	No. School Dist.	General Taxes	School District	School District	School District	School District	Highway Ditch No.	Ditch No.	Ditch No.	Ditch No.	TOTAL TAXES	PAID	WHEN PAID	No. of Receipt	March Settlement	June Settlement	Penalty	November Settlement	Penalty	Collections to First Monday in January	Penalty	Delinquent on First Monday in January	REMARKS			
							No. No. Mills	No. No. Mills				No. No. Mills	No. No. Mills	\$	cts.																		\$	cts.	\$
J. B. Sarum			NE 1/4 of NE 1/4	7	141	25	40	172	01			2775																							
H. E. Shreve			NW 1/4 of NE 1/4				40	172				2775																							
J. B. Sarum			SW 1/4 of NE 1/4				40	352				5679																							
			SE 1/4 of NE 1/4				40	459				7405																							
Thos. M. Klement			NE 1/4 of NW 1/4				40	200				3227																							
			NW 1/4 of NW 1/4 Lot 1				36	76				3243																							
			SW 1/4 of NW 1/4				20	107				1726																							
H. E. Shreve			SE 1/4 of NW 1/4				39	09				2952																							
W. H. Reasoner			SW 1/4 of NW 1/4				17	10				1387																							
H. E. Shreve			NE 1/4 of SW 1/4				36	60				2775																							
J. M. Egan			NW 1/4 of SW 1/4				37	24				2952																							
Herb. Hevener + Wm. Ward			SW 1/4 of SW 1/4				37	48				2856																							
			SE 1/4 of SW 1/4				40	183				2952																							
E. B. Boe			NE 1/4 of SE 1/4				40	228				3678																							
E. J. Resch + H. A. Astell			NW 1/4 of SE 1/4				38	64				3582																							
Immigration Land			SW 1/4 of SE 1/4				36	58				2952																							
			SE 1/4 of SE 1/4				39	32				3162																							
							618.81	3489				562.87																							

Cass County, Minnesota, for Taxes for the Year 1924

TOTAL TAXES	PAID	WHEN PAID	No. of Receipt	March Settlement	June Settlement	Penalty	November Settlement	Penalty	Collections to First Monday in January	Penalty	Delinquent on First Monday in January	REMARKS
\$ cts.	\$ cts.	Month Day Year		\$ cts.	\$ cts.	\$ cts.	\$ cts.	\$ cts.	\$ cts.	\$ cts.	\$ cts.	
2775	12160	PAID in Full OCT 31 1925	12160									
2775		1st. Half Paid MAY 2 1925	11067									
5679		2nd Half Paid OCT 31 1925	7578		4227		4227					
7405		1st. Half Paid MAY 2 1925	7578									
		2nd Half Paid OCT 31 1925	12160									
3227												
3227												
3243												
1726												
1839												
2952		2nd Half Paid OCT 31 1925	11067									
		1st. Half Paid MAY 2 1925	5728		1476		1476					
1387		PAID in Full DEC 15 1925	1387									
2775		2nd Half Paid OCT 31 1925	11067									
		1st. Half Paid MAY 2 1925	5728		1388		1387					
2952		PAID in Full MAY 25 1925	4386		2952							
2856												
2952												
3678		2nd Half Paid OCT 31 1925	11907									
		1st. Half Paid MAY 2 9 1925	5728									
3582		2nd Half Paid OCT 31 1925	6573		3630		3630					
		1st. Half Paid MAY 2 9 1925	5728									
2952		2nd Half Paid OCT 31 1925	11907									
		1st. Half Paid MAY 2 9 1925	4701		1800		1152					
3162		2nd Half Paid OCT 12 1925	7521									
		1st. Half Paid MAY 2 9 1925	4246		1581		1581					
562.87					17054		23633					

As per court findings 4.98 and order

As per court findings 4.86 and order.

See Abatement # 674

Pal. due 11.52

Tax List of Real Property in the Town of Pinna

71031—LOUIS F. BOW CO., ST. PAUL

IN WHOSE NAME ASSESSED	TO WHOM TRANSFERED	Sold for Taxes	SUBDIVISION	Sec. or Lot	Town or Block	No. of Acres		VALUATION	No. School Dist.	General Taxes	School District No. 21	School District	School District	School District
						Rng.	Acres 100's				No. Rate	No. Rate	No. Rate	No. Rate
								Dollars			\$ cts.	\$ cts.	\$ cts.	\$ cts.
Immigration Land Co.			NE 1/4 of NE 1/4	7	141	25	40	161	01		2597			
Marcus Nelson			NW 1/4 of NE 1/4				40	161			2597			
Harry M. Auld			SW 1/4 of NE 1/4				40	161			2597			
"			SE 1/4 of NE 1/4				40	172			2775			
Marcus Nelson			NE 1/4 of NW 1/4				40	161			2597			
"			NW 1/4 of NW 1/4				40	161			2597			
Geo. L. Gardner	Geo. H. Steinmetz		SW 1/4 of NW 1/4				40	161			2597			
Harry M. Auld			SE 1/4 of NW 1/4				40	161			2597			
Immigration Land Co.			NE 1/4 of SW 1/4				40	183			2952			
Geo. L. Gardner	Geo. H. Steinmetz		NW 1/4 of SW 1/4				40	172			2775			
"	"		SW 1/4 of SW 1/4				40	172			2775			
"	"		SE 1/4 of SW 1/4				40	350			5647			
Harry M. Auld			NE 1/4 of SE 1/4				40	182			2936			
"			NW 1/4 of SE 1/4				40	182			2936			
"			SW 1/4 of SE 1/4				40	204			3291			
"			SE 1/4 of SE 1/4				40	182			2936			
						640	2926	472	02					

Cass County, Minnesota, for Taxes for the Year 1924

Highway Ditch No.	Ditch No.	Ditch No.	Ditch No.	TOTAL TAXES	PAID	WHEN PAID	No. of Receipt	March Settlement	June Settlement	Penalty	November Settlement	Penalty	Collections to First Monday in January	Penalty	Delinquent on First Monday in January	REMARKS
				2597	1	2nd Half Paid OCT 12 1925 1st Half Paid MAY 20 1925	9521		1299		1298					
				2597	2											
				2597	3											
				2775	4											
				2597	6											
				2597	7											
				2597	8	Paid in Full FEB 4 1925	407	2597								
				2597	9											
				2952	11	2nd Half Paid OCT 12 1925 1st Half Paid MAY 20 1925	9521		1476		1476					
				2775	12	Paid in Full FEB 4 1925										
				2775	13	Paid in Full FEB 4 1925										
				5647	14	Paid in Full FEB 4 1925	407	11197								
				2936	16											
				2936	17											
				3291	18											
				2936	19											
				472	02				137	94	27	75	27	74		

Tax List of Real Property in the Town of Linna

71031—LOUIS R. BOW CO., ST. PAUL

IN WHOSE NAME ASSESSED	TO WHOM TRANSFERRED	Sold for Taxes	SUBDIVISION	Sec. or Lot	Town or Block	Rng.	No. of Acres		VALUATION	No. School Dist.	General Taxes	School District No.	School District No.	School District No.	School District No.	
							Acres	100's				No. 21	No.	No.	No.	
												Rate	Rate	Rate	Rate	
												Mills	Mills	Mills	Mills	
												Dollars	\$ cts.	\$ cts.	\$ cts.	\$ cts.
<i>L B Wacker</i>			NE 1/4 of NE 1/4	11	141	25	40		161	C1		2597				
"			NW 1/4 of NE 1/4				40		161			2597				
"			SW 1/4 of NE 1/4				40		161			2597				
"			SE 1/4 of NE 1/4				40		161			2597				
"																
"			NE 1/4 of NW 1/4				40		166			2678				
"			NW 1/4 of NW 1/4				40		166			2678				
"			SW 1/4 of NW 1/4				40		166			2678				
"			SE 1/4 of NW 1/4				40		166			2678				
"																
<i>J M Auld</i>			NE 1/4 of SW 1/4				40		166			2678				
"			NW 1/4 of SW 1/4				40		166			2678				
"			SW 1/4 of SW 1/4				40		166			2678				
"			SE 1/4 of SW 1/4				40		166			2678				
"																
"			NE 1/4 of SE 1/4				40		161			2597				
"			NW 1/4 of SE 1/4				40		161			2597				
"			SW 1/4 of SE 1/4				40		161			2597				
"			SE 1/4 of SE 1/4				40		161			2597				
							640		2616			422.00				

Cass County, Minnesota, for Taxes for the Year 1924

Highway Ditch No.	Ditch No.	Ditch No.	Ditch No.	TOTAL TAXES	PAID	WHEN PAID	No. of Receipt	March Settlement	June Settlement	Penalty	November Settlement	Penalty	Collections to First Monday in January	Penalty	Delinquent on First Monday in January	REMARKS
				2597	1	1st. Half Paid MAY 29 1925	9969									
				2597	2	1st. Half Paid MAY 29 1925	6069		5194				5194			
				2597	3	1st. Half Paid MAY 29 1925										
				2597	4	1st. Half Paid MAY 29 1925										
					5											
				2678	6	1st. Half Paid OCT 22 1925	9969									
				2678	7	1st. Half Paid OCT 22 1925	6069		5356				5356			
				2678	8	1st. Half Paid OCT 22 1925										
				2678	9	1st. Half Paid OCT 22 1925										
					10											
				2678	11											
				2678	12											
				2678	13											
				2678	14											
					15											
				2597	16											
				2597	17											
				2597	18											
				2597	19											
					20											
				422.00					10550				10550			

Tax List of Real Property in the Town of Luverne of Minnesota

71031—LOUIS F. DOW CO., ST. PAUL

IN WHOSE NAME ASSESSED	TO WHOM TRANSFERRED	Sold for Taxes	SUBDIVISION	Sec. or Lot	Town or Block	Rng.	No. of Acres		VALUATION	No. School Dist.	General Taxes	School District	School District	School District	School District				
							No. Acres	100's				No. Rate	No. Rate	No. Rate	No. Rate				
										Dollars	\$	cts.	\$	cts.	\$	cts.	\$	cts.	
Nelson Jenny Co.			NE 1/4 of NE 1/4	12	111	25	40		161	C1		2597							
"			NW 1/4 of NE 1/4				40		161			2597							
J. B. Walker			SW 1/4 of NE 1/4				40		161			2597							
H. W. Jones & Sharpe Bros.			SE 1/4 of NE 1/4				40		161			2597							
J. B. Walker			NE 1/4 of NW 1/4				40		161			2597							
"			NW 1/4 of NW 1/4				40		161			2597							
"			SW 1/4 of NW 1/4				40		161			2597							
"			SE 1/4 of NW 1/4				40		161			2597							
"			NE 1/4 of SW 1/4				40		161			2597							
"			NW 1/4 of SW 1/4				40		161			2597							
"			SW 1/4 of SW 1/4				40		160			2581							
"			SE 1/4 of SW 1/4				40		160			2581							
H. W. Jones & Sharpe Bros.			NE 1/4 of SE 1/4				40		160			2581							
"			NW 1/4 of SE 1/4				40		160			2581							
Nelson Jenny Co.			SW 1/4 of SE 1/4				40		160			2581							
"			SE 1/4 of SE 1/4				40		160			2581							
							640		2570			41456							

Cass County, Minnesota, for Taxes for the Year 1924

TOTAL TAXES	PAID	WHEN PAID	No. of Receipt	March Settlement	June Settlement	Penalty	November Settlement	Penalty	Collections to First Monday in January	Penalty	Delinquent on First Monday in January	REMARKS	
													\$
2597	1	End Half Paid OCT 22 1925 Ist. Half Paid MAY 29 1925											
2597	2	End Half Paid OCT 22 1925 Ist. Half Paid MAY 29 1925	9969		3896		3895						
2597	3	End Half Paid OCT 22 1925 Ist. Half Paid MAY 29 1925	6069										
2597	4	Int. Paid in Full MAY 14 1925	3842		1298								
2597	5												
2597	6	End Half Paid OCT 22 1925 Ist. Half Paid MAY 29 1925	9969										
2597	7	End Half Paid OCT 22 1925 Ist. Half Paid MAY 29 1925	6069		5194		5194						
2597	8	End Half Paid OCT 22 1925 Ist. Half Paid MAY 29 1925											
2597	9	Ist. Half Paid MAY 29 1925											
2597	10												
2597	11	End Half Paid OCT 22 1925 Ist. Half Paid MAY 29 1925	9969										
2597	12	End Half Paid OCT 22 1925 Ist. Half Paid MAY 29 1925	6069		5178		5178						
2581	13	Ist. Half Paid MAY 29 1925											
2581	14	Ist. Half Paid MAY 29 1925											
2581	15												
2581	16	Int. Paid in Full MAY 14 1925	3842		2581								
2581	17	Int. Paid in Full MAY 14 1925	3842										
2581	18	End Half Paid OCT 22 1925 Ist. Half Paid MAY 29 1925	9969		2581		2581						
2581	19	End Half Paid OCT 22 1925 Ist. Half Paid MAY 29 1925	6069										
41456					20728		16848						

Tax List of Real Property in the Town of Reina

71031—LAWSON CO., ST. PAUL

IN WHOSE NAME ASSESSED	TO WHOM TRANSFERRED	Sold for Taxes	SUBDIVISION	Sec. or Lot	Town or Block	Rng.	No. of Acres		VALUATION	No. School Dist.	General Taxes	School District	School District	School District	School District				
							Acres	100's				No. 07	No.	No.	No.				
												Rate	Rate	Rate	Rate				
												Mills	Mills	Mills	Mills				
												\$	cts.	\$	cts.	\$	cts.	\$	cts.
												Dollars							
A. W. Lounsbury	Archie A. Walker		NE 1/4 of NE 1/4	13	141	25	40	161	0.1			25	97						
"	"		NW 1/4 of NE 1/4				40	161				25	97						
"	"		SW 1/4 of NE 1/4				40	161				25	97						
"	"		SE 1/4 of NE 1/4				40	161				25	97						
A. W. Lounsbury	Archie A. Walker		NE 1/4 of NW 1/4				40	161				25	97						
Adel Rosing	"		NW 1/4 of NW 1/4				40	161				25	97						
"	"		SW 1/4 of NW 1/4				40	161				25	97						
A. W. Lounsbury	Archie A. Walker		SE 1/4 of NW 1/4				40	161				25	97						
A. W. Lounsbury	Archie A. Walker		NE 1/4 of SW 1/4				40	160				25	81						
Christ Luke	"		NW 1/4 of SW 1/4				40	154				24	84						
"	"		SW 1/4 of SW 1/4				40	154				24	84						
A. W. Lounsbury	"		SE 1/4 of SW 1/4				40	160				25	81						
"	Archie A. Walker		NE 1/4 of SE 1/4				40	160				25	81						
"	"		NW 1/4 of SE 1/4				40	160				25	81						
"	"		SW 1/4 of SE 1/4				40	160				25	81						
"	"		SE 1/4 of SE 1/4				40	160				25	81						
							640	2556					412	30					

Cass County, Minnesota, for Taxes for the Year 1924

Highway Ditch No.	Ditch No.	Ditch No.	Ditch No.	TOTAL TAXES	PAID	WHEN PAID	No. of Receipt	March Settlement	June Settlement	Penalty	November Settlement	Penalty	Collections to First Monday in January	Penalty	Delinquent on First Monday in January	REMARKS
Month Day Year																
				2597	1	2d Half Paid OCT 31 1925										
				2597	2	1st Half Paid MAY 29 1925 17681V										
				2597	3	2d Half Paid OCT 31 1925 7882		5194			5194					
				2597	4	1st Half Paid MAY 29 1925										
				2597	5	2d Half Paid OCT 31 1925 17681V										
				2597	6	1st Half Paid MAY 29 1925 7882		1298			1299					
				2597	7										2987	2597 3.90
				2597	8										2597	
				2597	9	2d Half Paid OCT 31 1925 17681V										
				2597	10	1st Half Paid MAY 29 1925 7882		1299			1298					
				2581	11										2968	2581 3.87
				2484	12	paid in full MAY 29 1925		4968								
				2484	13	paid in full MAY 29 1925		6187								
				2581	14										2581	
				2581	15	2d Half Paid OCT 31 1925										
				2581	16	1st Half Paid MAY 29 1925										
				2581	17	2d Half Paid OCT 31 1925 17681V										
				2581	18	1st Half Paid MAY 29 1925 7882		5162			5162					
				2581	19	2d Half Paid OCT 31 1925										
				2581	20	1st Half Paid MAY 29 1925										
				412	30			17921			12953					

Tax List of Real Property in the Town of Lima

71931—LOUISIANA CO., ST. PAUL

IN WHOSE NAME ASSESSED	TO WHOM TRANSFERRED	Sold for Taxes	SUBDIVISION	Sec. or Lot	Town or Block	No. of Acres		VALUATION	No. School Dist.	General Taxes	School District	School District	School District	School District
						Rate Mills	Rate Mills				Rate Mills	Rate Mills		
<i>H. M. Auld</i>			NE 1/4 of NE 1/4	14	141	25	10	166	C. 1.		2678			
"			NW 1/4 of NE 1/4				40	166			2678			
"			SW 1/4 of NE 1/4				40	166			2678			
"			SE 1/4 of NE 1/4				40	166			2678			
"														
"			NE 1/4 of NW 1/4				40	172			2775			
"			NW 1/4 of NW 1/4				40	172			2775			
"			SW 1/4 of NW 1/4				40	172			2775			
"			SE 1/4 of NW 1/4				40	172			2775			
<i>Harlan P. Roberts</i>			NE 1/4 of SW 1/4				40	172			2775			
"			NW 1/4 of SW 1/4				40	172			2775			
<i>Grand Rapids Land & Ore Co.</i>			SW 1/4 of SW 1/4				40	161			2597			
<i>Frank Taylor</i>			SE 1/4 of SW 1/4				40	158			2549			
"														
"			NE 1/4 of SE 1/4				40	161			2597			
<i>Lud Blair</i>			NW 1/4 of SE 1/4				40	166			2678			
<i>Frank Taylor</i>			SW 1/4 of SE 1/4				40	154			2484			
"			SE 1/4 of SE 1/4				40	154			2484			
							640	2650			427.51			

Cass County, Minnesota, for Taxes for the Year 1924

Highway Ditch No.	Ditch No.	Ditch No.	Ditch No.	TOTAL TAXES	PAID	WHEN PAID	No. of Receipt	March Settlement	June Settlement	Penalty	November Settlement	Penalty	Collections to First Monday in January	Penalty	Delinquent on First Monday in January	REMARKS		
																	\$	cts.
				2678	✓													
				2678	✓													
				2678	✓													
				2678	✓													
				2775	✓													
				2775	✓													
				2775	✓													
				2775	✓													
				2775	✓													
				2775	✓													
				2775	✓													
				2775	✓													
				2597	✓													
				2549	✓													
				2597	✓													
				2678	✓													
				2484	✓													
				2484	✓													
				427.51														

3191 2775 4.16
2775

paid in full OCT 31 1925 11215 ✓

2549 253 ✓

paid in full OCT 31 1925 11215 ✓

4968 497

7517

Tax List of Real Property in the Town of Leina

71031—LOUIS R. BOW CO., ST. PAUL

IN WHOSE NAME ASSESSED	TO WHOM TRANSFERED	Sold for Taxes	SUBDIVISION	Sec. or Lot	Town or Block	Rng.	No. of Acres		VALUATION	No. School Dist.	General Taxes	School District	School District	School District	School District
							Acres	100's				No. C1	No.	No.	No.
												Rate	Rate	Rate	Rate
												Mills	Mills	Mills	Mills
												\$	\$	\$	\$
												cts.	cts.	cts.	cts.
Weyerhaeuser et al	Henry O. Salvarson		NE 1/4 of NE 1/4	15	H1	25	40		172	C1			27	75	
"	"		NW 1/4 of NE 1/4				40		177				32	10	
"	"		SW 1/4 of NE 1/4				40		172				27	75	
Weyerhaeuser et al			SE 1/4 of NE 1/4				40		172				27	75	
"	"		NE 1/4 of NW 1/4				40		177				28	56	
"	"		NW 1/4 of NW 1/4				40		177				28	56	
"	"		SW 1/4 of NW 1/4				40		172				27	75	
"	"		SE 1/4 of NW 1/4				40		177				28	56	
Fred Blais	Anderson & Hawkinson		NE 1/4 of SW 1/4				40		202				32	59	
Weyerhaeuser et al			NW 1/4 of SW 1/4				40		172				27	75	
Fred Blais			SW 1/4 of SW 1/4				40		166				26	78	
			SE 1/4 of SW 1/4				40		161				25	97	
Immigration Land Co.	Fred Blais		NE 1/4 of SE 1/4				40		172				27	75	
Anderson & Hawkinson			NW 1/4 of SE 1/4				40		172				27	75	
Immigration Land Co.			SW 1/4 of SE 1/4				40		86				13	87	
			SE 1/4 of SE 1/4				40		161				25	97	
							640		2710				437	21	

Cass County, Minnesota, for Taxes for the Year 1924

Highway Ditch No.	Ditch No.	Ditch No.	Ditch No.	TOTAL TAXES	PAID	WHEN PAID	No. of Receipt	March Settlement	June Settlement	Penalty	November Settlement	Penalty	Collections to First Monday in January	Penalty	Delinquent on First Monday in January	REMARKS
				2775		2nd Half Paid OCT 12 1925 9521V										
				3210		1st Half Paid MAY 20 1925 4746			1387		1388					
				2775		2nd Half Paid OCT 17 1925 9393V										
				2775		1st Half Paid MAY 14 1925 3878			2856		3129					Due 2nd half \$ 29
				2775		2nd Half Paid OCT 12 1925 9521V			1387		1388					
				2856		1st Half Paid MAY 20 1925 4746										
				2856		2nd Half Paid OCT 12 1925 9522V										
				2856		1st Half Paid MAY 20 1925 4747			5672		5671					
				2775		2nd Half Paid OCT 12 1925 9521V										
				2856		1st Half Paid MAY 20 1925 4747										
				3259		2nd Half Paid OCT 12 1925 9522V										
				2775		1st Half Paid MAY 20 1925 4747										
				2678		2nd Half Paid OCT 12 1925 9522V										
				2597		1st Half Paid MAY 20 1925 4747			1339		1339					
				2775		2nd Half Paid OCT 12 1925 9522V										
				2775		1st Half Paid MAY 20 1925 4747			1387		1388					
				2775		2nd Half Paid OCT 31 1925 11828V										
				2775		1st Half Paid MAY 20 1925 4747			1388		1387					
				1387		2nd Half Paid OCT 31 1925 11828V			347		347					
				2597		1st Half Paid MAY 20 1925 4747			173		173					
				2597		2nd Half Paid OCT 12 1925 9522V			1298		1299					
							437		246		51		190		69	

Tax List of Real Property in the Town of Lerna of Minnesota

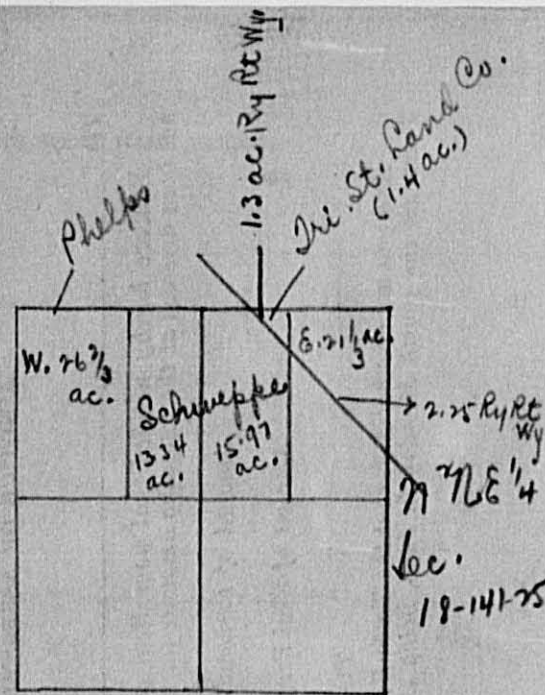
71931—Louis F. Dow Co., St. Paul

IN WHOSE NAME ASSESSED	TO WHOM TRANSFERRED	Sold for Taxes	SUBDIVISION	Sec. or Lot	Town or Block	Rng.	No. of Acres		VALUATION	No. School Dist.	General Taxes	School District	School District	School District	School District		
							Rate	Rate				Rate	Rate				
												No. of Mills	No. of Mills	No. of Mills	No. of Mills		
												\$	\$	\$	\$		
												cts.	cts.	cts.	cts.		
Fred Blais	Wm Parise		NE 1/4 of NE 1/4	17	141	25	40	288	01			4646					
Jules DeLage			NW 1/4 of NE 1/4				40	315				5084					
Fred Blais			SW 1/4 of NE 1/4				40	182				2936					
"	Wm Parise		SE 1/4 of NE 1/4				40	112				2775					
"																	
"	Ben Brown		NE 1/4 of NW 1/4				40	300				4840					
"	"		NW 1/4 of NW 1/4				39 24	195				3146					
Dan S. Mact			SW 1/4 of NW 1/4				36 37	161				2597					
J.A. Elliott			SE 1/4 of NW 1/4				39 29	172				2775					
"																	
"			NE 1/4 of SW 1/4				36 57	148				2388					
"			NW 1/4 of SW 1/4				40	350				5647					
Erick Wilberg			SW 1/4 of SW 1/4				40	242				3904					
Immigration Land Co.			SE 1/4 of SW 1/4				40	172				2775					
"																	
Fred Blais			NE 1/4 of SE 1/4				40	161				2597					
"			NW 1/4 of SE 1/4				39 13	161				2897					
"			SW 1/4 of SE 1/4				36 60	337				5437					
"			SE 1/4 of SE 1/4				39 41	161				2597					
							626.61	3517					56739				

Cass County, Minnesota, for Taxes for the Year 1924

Highway Ditch No.	Ditch No.	Ditch No.	Ditch No.	TOTAL TAXES	PAID	WHEN PAID	No. of Receipt	March Settlement	June Settlement	Penalty	November Settlement	Penalty	Collections to First Monday in January	Penalty	Delinquent on First Monday in January	REMARKS
				4646	1	2nd Half Paid OCT 26 1925	10217									
				5084	2	1st Half Paid MAY 29 1925	7836		2323				7313			
				2936	3	Paid in Full MAY 11 1925	3685		5082							
				2775	4	2nd Half Paid OCT 31 1925	11878		1468				1468			
					5	1st Half Paid MAY 29 1925	7912									
				4840	6	2nd Half Paid OCT 26 1925	7836		1388				1387			
				3146	7	1st Half Paid MAY 29 1925	7836									
				2597	8	Paid in Full FEB 5 1925										
				2775	9	Paid in Full FEB 5 1925	444		444							
					10											
				3373	11	Paid 7/25/26 by Del. Rec. # 20094										
				6090	12	Paid 11/6/26 by Del. Rec. # 19736										
				5217	13	Paid subsequent to Cert. No. 12532										
				3267	14	Paid 11/6/26 by Del. Rec. # 19737										
					15	2nd Half Paid OCT 12 1925	9572									
				2990	16	1st Half Paid MAY 20 1925	4247		1634				1633			
				2926	17											
				5807	18	2nd Half Paid OCT 31 1925	7912		4366				4367			
				2597	19	1st Half Paid MAY 29 1925	7912									
					20											
				4375					79.86				162.61			111.78

Tax List of Real Property in the Town of Reina



TO WHOM TRANSFERRED	Sold for Taxes	SUBDIVISION	Sec. or Lot	Town or Block	Rng.	No. of Acres	VALUATION	No. School Dist.	General Taxes	School District	School District	School District	School District	
						Acres 100's				No. 1	No.	No.	No.	Rate Mills
						66	125 01			2017				
		<i>W. 1/4 of NE 1/4</i>				26 75	103			1662				
		<i>NW 1/4 of NE 1/4</i>				40	195			3146				
		<i>SE 1/4 of NE 1/4</i>				40	206			3323				
		<i>Triangular piece of NE 1/4 NE 1/4 lying NE of Railway</i>				140	11			177				
		<i>NE 1/4 of NW 1/4</i>				40	214			3452				
		<i>NW 1/4 of NW 1/4 Lot 1</i>				37 67	171			2759				
		<i>SW 1/4 of NW 1/4 - 2</i>				37 32	152			2936				
		<i>SE 1/4 of NW 1/4</i>				40	195			3146				
		<i>E. 13 1/2 a. of NW 1/4 NE 1/4 + NW 1/4 SE 1/4 NE 1/4 of Ry</i>				29 30	138			2226				
		<i>NE 1/4 of SW 1/4</i>				40	206			3323				
		<i>NW 1/4 of SW 1/4 Lot 13</i>				37 97	195			3146				
		<i>SW 1/4 of SW 1/4 - 4</i>				38 12	195			3146				
		<i>SE 1/4 of SW 1/4</i>				40	200			3227				
		<i>NE 1/4 of SE 1/4</i>				40	448			7228				
		<i>NW 1/4 of SE 1/4</i>				40	200			3227				
		<i>SW 1/4 of SE 1/4</i>				40	195			3146				
		<i>SE 1/4 of SE 1/4</i>				40	200			3227				
						630 68	3379			545 14				

W. 26 3/4 ac.
Schweppes
13 1/4 ac.
15.97 ac.
2.25 Ry Rt. W. 1/4
77 7/8 1/4 ac.
18-14175 i St. Paul Co.

Henry O. Halverson
C. E. Yast
Hudson & Jacques
Henry O. Halverson
Ole Halverson
J. A. Schweigger + Wm. Hart

Cass County, Minnesota, for Taxes for the Year 1924

Highway Ditch No.	Ditch No.	Ditch No.	Ditch No.	TOTAL TAXES	PAID	WHEN PAID	No. of Receipt	March Settlement	June Settlement	Penalty	November Settlement	Penalty	Collections to First Monday in January	Penalty	Delinquent on First Monday in January	REMARKS
				2017		Paid in Full MAY 29 1925	5043		2017							
				1062		Paid in Full MAY 29 1925	5044		1662							
				3146		1st Half Paid MAY 6 1925	10860									
				3323		2nd Half Paid MAY 6 1925	3531		3234		3235					
				177		Paid in Full MAY 29 1925	6389		177							
				3452		Paid in Full OCT 31 1925	1163				3452	155				
				2759		2nd Half Paid OCT 31 1925	12470									
				3036	100	1st Half Paid MAY 29 1925	7118		1518		1518					
				3146		Paid in Full OCT 31 1925	11632				3146	142				
				2226									1560	2226	334	
				3323		1st Half Paid OCT 31 1925	9393		1662		1661					
				3475	329	2nd Half Paid OCT 31 1925	17470		1737		1738					
				3638	492	1st Half Paid OCT 31 1925	10933		1819		1819					
				3523	296	2nd Half Paid MAY 29 1925	7522		1761		1762					
				7475	247	2nd Half Paid OCT 31 1925	10860									
				3227		1st Half Paid MAY 6 1925	3531		5351		5351					
				3146		2nd Half Paid OCT 31 1925	9227									
				3227		1st Half Paid MAY 29 1925	7277		3186		3187					
				1464					24124		26869					

NOTICE OF ASSESSMENT AND E
 are hereby notified that your Real and Personal
 assessed at the following amounts for the year 1924:
 Amount of Personal Property,
 Amount of Real Property,
 TOTAL,
 you are also notified, that the Town Board of Equ
 the fourth Monday in June, being the 23rd day

of Real Property in the Town of River

TO WHOM TRANSFERRED	Sold for Taxes	SUBDIVISION	Sec. or Lot	Town or Block	No. of Acres		VALUATION	No. School Dist.	General Taxes	School District	School District	School District	School District
					Rate	Rate				Rate	Rate		
Ida M. Phelps		N-E 1/4 of N-E 1/4	18	141	25	26	66	125	C1.	2017			
S. H. Conkey		N-W 1/4 of N-E 1/4					19	103		1662			
Old Halverson		S-W 1/4 of N-E 1/4				40	195			3146			
"		S-E 1/4 of N-E 1/4				40	206			3323			
Irish Land Co.		Triangular piece of NW 1/4 of NE 1/4 of Railway					140	11		177			
Jacob B. Yast		NE 1/4 of NW 1/4				40	214			3452			
"		NW 1/4 of NW 1/4 Lot 1				37	67	171		2759			
C. E. Yast		S-W 1/4 of NW 1/4 " 2				37	32	152		2936			
Jacob B. Yast		S-E 1/4 of NW 1/4				40	195			3146			
L. L. Schueppe		E 1/2 of NW 1/4 of NE 1/4 of NW 1/4 of Ry				29	30	138		2226			
Henry O. Halverson		NE 1/4 of SW 1/4				40	206			3323			
C. E. Yast		NW 1/4 of SW 1/4 Lot 3				37	77	195		3146			
Hudson's Jacques & White		S-W 1/4 of SW 1/4 " 4				38	12	195		3146			
Henry O. Halverson		S-E 1/4 of SW 1/4				40	200			3227			
Old Halverson		NE 1/4 of SE 1/4				40	148			7228			
"		NW 1/4 of SE 1/4				40	200			3227			
J. A. Schweiger + Wm. Hart		S-W 1/4 of SE 1/4				40	195			3146			
"		S-E 1/4 of SE 1/4				40	200			3227			
						630	68	3379		545	14		

Cass County, Minnesota, for Taxes for the Year 1924

Highway Ditch No.	Ditch No.	Ditch No.	Ditch No.	TOTAL TAXES	PAID	WHEN PAID	No. of Receipt	March Settlement	June Settlement	Penalty	November Settlement	Penalty	Collections to First Monday in January	Penalty	Delinquent on First Monday in January	REMARKS
				2017	1	Paid in Full MAY 29 1925	5043		2017							
				1062	2	Paid in Full MAY 29 1925	5044		1662							
				3146	3	1st Half Paid MAY 6 1925	10860									
				3323	4	1st Half Paid MAY 6 1925	3531		3234		3235					
				177	5	1st Half Paid MAY 29 1925	6389		177							
				3452	6	Paid in Full OCT 31 1925	11632				3452	155				
				2759	7	1st Half Paid OCT 31 1925	17470									
				3036	8	1st Half Paid MAY 29 1925	7118		1518		1518					
				3146	9	Paid in Full OCT 31 1925	11632				3146	142				
				2226	10								2560	2226	334	
				3323	11	1st Half Paid OCT 31 1925	9393		1662		1661					
				3475	12	1st Half Paid OCT 31 1925	17470		1737		1738					
				3638	13	1st Half Paid OCT 31 1925	10923		1819		1819					
				3523	14	1st Half Paid OCT 31 1925	9393		1761		1762					
					15											
				7475	16	1st Half Paid OCT 31 1925	10860									
				3227	17	1st Half Paid MAY 6 1925	3531		5351		5351					
				3146	18	1st Half Paid MAY 29 1925	8292									
				3227	19	1st Half Paid OCT 31 1925	7277		3186		3187					
					20											
				1464					24124		26869					

Tax List of Real Property in the Town of Lincoln

71931-LOUIS F. DOW CO., ST. PAUL

IN WHOSE NAME ASSESSED	TO WHOM TRANSFERRED	Sold for Taxes	SUBDIVISION	Sec. or Lot	Town or Block	Rng.	No. of Acres		VALUATION	No. School Dist.	General Taxes	School District	School District	School District	School District		
							Rate	Rate				Rate	Rate				
Anderson & Sawbinson			NE 1/4 of NE 1/4	19	141	25	110	172				2045					
"			NW 1/4 of NE 1/4				40	172				2045					
"			SW 1/4 of NE 1/4				40	172				2045					
Ben A. Mizen			SE 1/4 of NE 1/4				40	172				2045					
Robert A. Whiteside			NE 1/4 of NW 1/4				40	182				2164					
"			NW 1/4 of NW 1/4 Lot 1				38 12	172				2045					
"			SW 1/4 of NW 1/4 " 2				37 91	161				1914					
"			SE 1/4 of NW 1/4				40	172				2045					
A. E. Haer	Minn. & Ontario Paper Co.		NE 1/4 of SW 1/4				40	161				1914					
Nels Anderson			NW 1/4 of SW 1/4 " 3				37 82	161				1914					
"			SW 1/4 of SW 1/4 " 4				37 67	161				1914					
A. E. Haer	Minn. & Ontario Paper Co.		SE 1/4 of SW 1/4				40	171				2033					
Ben A. Mizen			NE 1/4 of SE 1/4				40	171				2033					
Anderson & Sawbinson			NW 1/4 of SE 1/4				40	171				2033					
Ben A. Mizen			SW 1/4 of SE 1/4				40	171				2033					
"			SE 1/4 of SE 1/4				40	171				2033					
							631.58	2713					32255				

Cass County, Minnesota, for Taxes for the Year 1924

Highway Ditch No.	Ditch No.	Ditch No.	Ditch No.	TOTAL TAXES	PAID	WHEN PAID	No. of Receipt	March Settlement	June Settlement	Penalty	November Settlement	Penalty	Collections to First Monday in January	Penalty	Delinquent on First Monday in January	REMARKS
\$ cts.	\$ cts.	\$ cts.	\$ cts.	\$ cts.	\$ cts.	Month Day Year		\$ cts.	\$ cts.	\$ cts.	\$ cts.	\$ cts.	\$ cts.	\$ cts.	\$ cts.	
1313				3358	1/2 of 1/2 Int- Oct 31 1925	14128V										
2045				2045	1st Half Paid MAY 29 1925	7842		176			2787					
1641				3686	2nd Half Paid MAY 29 1925	7358		1136			1136					
492				2537	1st Half Paid OCT 31 1925	10841V		880			880					5-11 Bal due on 1/2 of 1/2 int
1313				3477	2nd Half Paid OCT 31 1925	10933V		1268			1269					
533				2578	1st Half Paid MAY 29 1925	7522		1739			1738					
1518				3432	2nd Half Paid OCT 31 1925	10933V		1289			1289					
1641				3686	1st Half Paid MAY 29 1925	7522		1716			1716					
1641				3686	2nd Half Paid OCT 31 1925	10933V		1843			1843					
1641				3555	1st Half Paid OCT 31 1925	11974V		1017			1016					
1822				3736	2nd Half Paid MAY 29 1925	6602		586			955					This amount given on ditch be- cause of 18.27 19.28 statement. Bal due on ditch no. 663 is 19.10.
533				2447	1st Half Paid OCT 31 1925	11974V		1016			1017					4127 1914 2.89
1641				3674	2nd Half Paid MAY 29 1925	6602		686			955					2764 1914 2.89 L. 5.33=5.63
1109				3142	1st Half Paid OCT 31 1925	10841V		1571			1571					
1313				8346	2nd Half Paid MAY 29 1925	7842		836			836					
533				2566	1st Half Paid MAY 29 1925	7358		418			418					
263				2296	2nd Half Paid OCT 31 1925	10841V		419			419					
17306				49561	1st Half Paid MAY 29 1925	4982		2431			2431					
							20713			22278						

Tax List of Real Property in the Town of Lunda of Minnesota

71931—COUNTY OF CASS, MINN.

IN WHOSE NAME ASSESSED	TO WHOM TRANSFERRED	Sold for Taxes	SUBDIVISION	No. of Acres		VALUATION	No. School Dist.	General Taxes	School District	School District	School District	School District	
				Sec. or Lot	Town or Block				Rng.	Acres	100's	No.	Rate Mills
Nector Beckman			Cass Ry. R. Way	20	111	25	36.40			249			
Anderson & Hutchinson			NE 1/4 of NE 1/4				40			2960			
"			NW 1/4 of NE 1/4				40			1914			
"			SW 1/4 of NE 1/4				40			1914			
"			SE 1/4 of NE 1/4				40			1914			
Hudson & Jacques	White	78	NE 1/4 of NW 1/4				40			171			
Anderson & Hutchinson			NW 1/4 of NW 1/4				40			171			
John McAuffe			SW 1/4 of NW 1/4				40			171			
Hudson & Jacques	White	78	SE 1/4 of NW 1/4				40			171			
John J. McAuffe			NE 1/4 of SW 1/4				40			161			
"			NW 1/4 of SW 1/4				40			161			
A. O. Astell	First State Bk. Rumer		SW 1/4 of SW 1/4				40			198			
John J. McAuffe			SE 1/4 of SW 1/4				40			161			
Robert B. White			NE 1/4 of SE 1/4				40			154			
"			NW 1/4 of SE 1/4				40			154			
John J. McAuffe	Archib. W. Walker		SW 1/4 of SE 1/4				40			154			
Robert B. White			SE 1/4 of SE 1/4				40			154			
				636.40		2713			32254				

Cass County, Minnesota, for Taxes for the Year 1924

Highway Ditch No.	Ditch No.	Ditch No.	Ditch No.	TOTAL TAXES	PAID	WHEN PAID	No. of Receipt	March Settlement	June Settlement	Penalty	November Settlement	Penalty	Collections to First Monday in January	Penalty	Delinquent on First Monday in January	REMARKS	
\$ cts.	\$ cts.	\$ cts.	\$ cts.	\$ cts.		Month Day Year		\$ cts.	\$ cts.	\$ cts.	\$ cts.	\$ cts.	\$ cts.	\$ cts.	\$ cts.		
1148				4108	1	Paid in Full FEB 13 1925	715	4108		663							
739				2653	2	1/2 of 1/4 Int. Oak St. 12131 ✓ Paid in Full MAY 29 1925	7362			332			663				
865				2776	3	1/2 of 1/4 Int. Oak St. 12131 ✓ Paid in Full MAY 29 1925	7362			694			694				
1313				3227	4	1/2 of 1/4 Int. Oak St. 12131 ✓ Paid in Full MAY 29 1925	7362			1082			1082				
				2525	5	1/2 of 1/4 Int. Oak St. 12131 ✓ Paid in Full OCT 31 1925	10933			807			807				
492				2525	6	1/2 of 1/2 Int. Oak St. 12131 ✓ Paid in Full OCT 31 1925	10933			1263			1263				
1313				3346	7	1/2 of 1/4 Int. Oak St. 12131 ✓ Paid in Full MAY 29 1925	7362			836			836				
1313				3346	8	1/2 of 1/4 Int. Oak St. 12131 ✓ Paid in Full MAY 29 1925	7362			418			418				
739				2772	9	1st Half Paid MAY 29 1925 2nd Half Paid OCT 31 1925	10933			417			417				
					10												
985				2899	11	Paid in Full MAY 29 1925	7029			1386			1386				
1026				2940	12	Paid in Full MAY 29 1925	7029			5839							
615				2969	13	Paid in Full MAY 29 1925	7336			2969							
739				2653	14	Paid in Full MAY 29 1925	7029			2653							
					15												
1313				3144	16	1st Half Paid OCT 31 1925 2nd Half Paid MAY 29 1925	10933			1572			1572				
985				2816	17	1st Half Paid OCT 31 1925 2nd Half Paid MAY 29 1925	10933			1408			1408				
615				2446	18	1st Half Paid MAY 29 1925 2nd Half Paid OCT 31 1925	10933			1223			1223				
1313				3144	19	1st Half Paid MAY 29 1925 2nd Half Paid OCT 31 1925	10933			1572			1572				
					20												
				15510		47764			4108	26885			14424				

Tax List of Real Property in the Town of Linn

71931—Linn Co., Minn.

IN WHOSE NAME ASSESSED	TO WHOM TRANSFERRED	Sold for Taxes	SUBDIVISION	Sec. or Lot	Town or Block	Rng.	No. of Acres		VALUATION	No. School Dist.	General Taxes	School District	School District	School District	School District				
							No. 100's	100's				No. 100's	No. 100's	No. 100's	No. 100's	No. 100's	No. 100's		
							Rate	Rate				Rate	Rate	Rate	Rate	Rate	Rate		
Emanuel Martin			NE 1/4 of NE 1/4	21	141	25	40	161	1914			1914							
"			NW 1/4 of NE 1/4				40	154	1831			1831							
Mabel A. Pary			SW 1/4 of NE 1/4				40	154	1831			1831							
Robert B. Whiteside			SE 1/4 of NE 1/4				40	161	1914			1914							
George H. Crosby			NE 1/4 of NW 1/4				40	154	1831			1831							
"			NW 1/4 of NW 1/4	Less Rg. Rt. of Way			38.81	148	1760			1760							
Anderson & Hawkinson			SW 1/4 of NW 1/4	"	"	"	37.08	143	1700			1700							
"			SE 1/4 of NW 1/4	"	"	"	38.48	148	1760			1760							
Linn State Land Co.			All of NE 1/4 SW 1/4	"	"	"	6.46	29	345			345							
Robert B. Whiteside			All of NE 1/4 of SW 1/4	SW of Rg. Rt. of Way			30.90	125	1486			1486							
"			NW 1/4 of SW 1/4				40	154	1831			1831							
"			SW 1/4 of SW 1/4				40	154	1831			1831							
"			SE 1/4 of SW 1/4				40	154	1831			1831							
Immigration Land Co.			NE 1/4 of SE 1/4				40	161	1914			1914							
"			NW 1/4 of SE 1/4	Less Rg. Rt. of Way			38.24	148	1760			1760							
"			SW 1/4 of SE 1/4	"	"	"	37.61	143	1700			1700							
R. B. Whiteside			SE 1/4 of SE 1/4	"	"	"	38	154	1831			1831							
							625.58		2445			29070							

Cass County, Minnesota, for Taxes for the Year 1924

Highway or Ditch No.	Ditch No.	Ditch No.	Ditch No.	TOTAL TAXES	PAID	WHEN PAID	No. of Receipt	March Settlement	June Settlement	Penalty	November Settlement	Penalty	Collections to First Monday in January	Penalty	Delinquent on First Monday in January	REMARKS
				\$ cts.	\$ cts.	Month Day Year	\$ cts.	\$ cts.	\$ cts.	\$ cts.	\$ cts.	\$ cts.	\$ cts.	\$ cts.	\$ cts.	\$ cts.
1				2406												
				2520					1260				1260			
				2356					1278				1078			Due and half 10 78
				205												
				739												
				1076												
				1313												
				985												
				170												
				851												
				1313												
				1313												
				985												
				459												
				689												
				985												
				615												
				13318					19289				18572			

Tax List of Real Property in the Town of Lina

71031—LOUIS F. DODD CO., ST. PAUL

Cass County, Minnesota, for Taxes for the Year 1924

IN WHOSE NAME ASSESSED	TO WHOM TRANSFERRED	Sold for Taxes	SUBDIVISION	Sec. or Lot	Town or Block	Rng.	No. of Acres Acres 100's	VALUATION Dollars	No. School Dist.	General Taxes	School District No. Rate Mills	School District No. Rate Mills	School District No. Rate Mills	School District No. Rate Mills	Highway Ditch No.	Ditch No.	Ditch No.	Ditch No.	TOTAL TAXES \$ cts.	PAID \$ cts.	WHEN PAID Month Day Year	No. of Receipt	March Settlement \$ cts.	June Settlement \$ cts.	Penalty \$ cts.	November Settlement \$ cts.	Penalty \$ cts.	Collections to First Monday in January \$ cts.	Penalty \$ cts.	Delinquent on First Monday in January \$ cts.	REMARKS	
Red River Lbr. Co.			NE 1/4 of NE 1/4	22	141	25	40	172			2045								2045		2nd Half Paid OCT 31 1925 1768 ^{1/2} 1st Half Paid MAY 29 1925 7883	1768 ^{1/2} 7883		1022		1023						
Sharpe Bros.			NW 1/4 of NE 1/4				40	114				1355							1355		1/2 Int Paid in Full MAY 14 1925 3845	3845		678								
Red River Lbr. Co.			SW 1/4 of NE 1/4				40	172				2045							2045		2nd Half Paid OCT 31 1925 1768 ^{1/2} 1st Half Paid MAY 29 1925 7883	1768 ^{1/2} 7883		2075		2045						
"			SE 1/4 of NE 1/4				40	172				2045							2045													
Sharpe Bros.			NE 1/4 of NW 1/4				40	172				2045							2045		1/2 Int Paid in Full MAY 14 1925 3845	3845		1073								
J.B. Walker			NW 1/4 of NW 1/4				40	172				2045							2045									23 52	2045	3.07		
Sharpe Bros.			SW 1/4 of NW 1/4				40	172				2045							2045		1st Half Paid in Full MAY 14 1925 3845 2nd Half Paid OCT 31 1925 1768 ^{1/2}	3845 1768 ^{1/2}		1072		1072						
Red River Lbr. Co.			SE 1/4 of NW 1/4				40	172				2045							2045		2nd Half Paid OCT 31 1925 1768 ^{1/2} 1st Half Paid MAY 29 1925 7883	1768 ^{1/2} 7883		1023		1072						
"																																
Sharpe Bros.			NE 1/4 of SW 1/4				40	172				2045							2045		2nd Half Paid OCT 31 1925 1768 ^{1/2} 1st Half Paid MAY 29 1925 7883	1768 ^{1/2} 7883		1022		1073						
"			NW 1/4 of SW 1/4				40	172				2045							2045		1st Half Paid in Full MAY 14 1925 3845	3845										
"			SW 1/4 of SW 1/4				40	171				2033							2033		1st Half Paid in Full MAY 14 1925 3845 2nd Half Paid OCT 31 1925 1768 ^{1/2}	3845 1768 ^{1/2}		2039								
Red River Lbr. Co.			SE 1/4 of SW 1/4				40	171				2033							2033		1st Half Paid in Full MAY 14 1925 3845 2nd Half Paid OCT 31 1925 1768 ^{1/2}	3845 1768 ^{1/2}		1016		1017						
Pine Tree Mfg Co.			NE 1/4 of SE 1/4				40	138				1641							1641		2nd Half Paid OCT 31 1925 11927 ^{1/2} 1st Half Paid MAY 29 1925 7802	11927 ^{1/2} 7802		821		820						
Robert B. Whitehead			NW 1/4 of SE 1/4				40	160				1902							1902		2nd Half Paid OCT 31 1925 1093 ^{1/2} 1st Half Paid MAY 29 1925 523	1093 ^{1/2} 523		951		951						
Red River Lbr. Co.			SW 1/4 of SE 1/4				40	160				1902							1902		2nd Half Paid OCT 31 1925 1768 ^{1/2} 1st Half Paid MAY 29 1925 7883	1768 ^{1/2} 7883		951		951						
Cecil R. Fitch			SE 1/4 of SE 1/4				40	125				1486							1486		Paid in Full FEB 28 1925 2424	2424		1486								
							640	2587				307 57							307 57					14.86	136 13		8852					

Tax List of Real Property in the Town of Resia

71931—LOUIS F. BOW CO., ST. PAUL

IN WHOSE NAME ASSESSED	TO WHOM TRANSFERRED	Sold for Taxes	SUBDIVISION	Sec. or Lot	Town or Block	No. of Acres		VALUATION	No. School Dist.	General Taxes	School District	School District	School District	School District			
						Rng.	100's				No. No. Mills	No. No. Mills	No. No. Mills	No. No. Mills			
Robert B. Whiteside	Roland Hicks		all of NE 1/4 of NE 1/4 (SW 1/4) 28 141 25 33 82				143					17.00					
Robert B. Whiteside			NW 1/4 of NE 1/4				161					19.14					
Nels Anderson			SW 1/4 of NE 1/4				161					19.14					
"			SE 1/4 of NE 1/4				161					19.14					
The Six State Land Co.			all of NE 1/4 NE 1/4 NE of Pt. of Hwy				18					2.14					
Robert B. Whiteside			NE 1/4 of NW 1/4				161					19.14					
"			NW 1/4 of NW 1/4				154					18.31					
Nels Anderson			SW 1/4 of NW 1/4				154					18.31					
A.D. Cleverly & Lelia D. Reinhart + H.E. Kundert			SE 1/4 of NW 1/4				161					19.14					
H. M. Auld			NE 1/4 of SW 1/4				161					19.14					
"			NW 1/4 of SW 1/4				161					19.14					
"			SW 1/4 of SW 1/4				171					20.33					
"			SE 1/4 of SW 1/4				171					20.33					
"			NE 1/4 of SE 1/4				171					20.33					
"			NW 1/4 of SE 1/4				171					20.33					
"			SW 1/4 of SE 1/4				171					20.33					
"			SE 1/4 of SE 1/4				171					20.33					
							637.89	262.2					311.72				

Cass County, Minnesota, for Taxes for the Year 1924

Highway Ditch No.	Ditch No.	Ditch No.	Ditch No.	TOTAL TAXES	PAID	WHEN PAID	No. of Receipt	March Settlement	June Settlement	Penalty	November Settlement	Penalty	Collections to First Monday in January	Penalty	Delinquent on First Monday in January	REMARKS
\$ cts.	\$ cts.	\$ cts.	\$ cts.	\$ cts.	\$ cts.	Month Day Year		\$ cts.	\$ cts.	\$ cts.	\$ cts.	\$ cts.	\$ cts.	\$ cts.	\$ cts.	
659				23.59	1	Paid in Full MAY 29 1925	5267									
6561				25.70	2	2nd Half Paid OCT 31 1925	10935V			23.59						
6561				25.70	3	1st Half Paid MAY 29 1925	1524			12.85			12.85			
2291				22.43	4	1st Half Paid MAY 29 1925	17176V									
80				2.94	5	2nd Half Paid OCT 31 1925	182840			24.07			24.06			
985				28.99	6	Paid in Full MAY 29 1925	6383			2.94						
985				28.16	7	2nd Half Paid OCT 31 1925	10935V			14.50			14.49			
1313				31.44	8	1st Half Paid MAY 29 1925	1524			14.08			14.08			
985				28.99	9	2nd Half Paid OCT 31 1925	17176V			15.72			15.72			
					10											
					11											
					12											
					13											
					14											
					15											
					16											
					17											
					18											
					19											
					20											
				84.14				395.86		107.75			81.20			

Tax List of Real Property in the Town of Lima

71931—LOUIS F. DOW CO., ST. PAUL

IN WHOSE NAME ASSESSED	TO WHOM TRANSFERRED	Sold for Taxes	SUBDIVISION	Sec. or Lot	Town or Block	Rng.	No. of Acres		VALUATION	No. School Dist.	General Taxes	School District	School District	School District	School District	Highway Ditch No.	Ditch No.	Ditch No.	Ditch No.	TOTAL TAXES	PAID	WHEN PAID	No. of Receipt	March Settlement	June Settlement	Penalty	November Settlement	Penalty	Collections to First Monday in January	Penalty	Delinquent on First Monday in January	REMARKS									
							No. Rate	No. Rate				No. Rate	No. Rate	Dollars	\$ cts.																		\$ cts.	\$ cts.	\$ cts.	\$ cts.	\$ cts.	\$ cts.	\$ cts.	\$ cts.	\$ cts.
E. L. Trask			NE 1/4 of NE 1/4	30	141	25	40		172											2045																					
Ludson + Jacques 1/8 Whiteside 1/8			NW 1/4 of NE 1/4				40		166											1974																					
Robt. B. Whiteside			SW 1/4 of NE 1/4				40		161											1914																					
"			SE 1/4 of NE 1/4				40		161											1914																					
J. M. Shook			NE 1/4 of NW 1/4				40		161											1914																					
Ludson + Jacques 1/8 Whiteside 1/8			NW 1/4 of NW 1/4 Lot 1				37	80	249											2960																					
Robert B. Whiteside			SW 1/4 of NW 1/4 " 2				38	20	161											1914																					
"			SE 1/4 of NW 1/4				40		161											1914																					
"			NE 1/4 of SW 1/4				40		160											1902																					
"			NW 1/4 of SW 1/4 " 3				38	60	154											1831																					
"			SW 1/4 of SW 1/4 " 4				39		166											1974																					
"			SE 1/4 of SW 1/4				40		160											1902																					
J. M. Shook			NE 1/4 of SE 1/4				40		301											3579																					
A. B. Whiteside			NW 1/4 of SE 1/4				40		160											1902																					
"			SW 1/4 of SE 1/4				40		160											1902																					
"			SE 1/4 of SE 1/4				40		160											1902																					
							633.60		2813										33443																						

Cass County, Minnesota, for Taxes for the Year 1924

Highway Ditch No.	Ditch No.	Ditch No.	Ditch No.	TOTAL TAXES	PAID	WHEN PAID	No. of Receipt	March Settlement	June Settlement	Penalty	November Settlement	Penalty	Collections to First Monday in January	Penalty	Delinquent on First Monday in January	REMARKS
\$ cts.	\$ cts.	\$ cts.	\$ cts.	\$ cts.	\$ cts.	Month Day Year		\$ cts.	\$ cts.	\$ cts.	\$ cts.	\$ cts.	\$ cts.	\$ cts.	\$ cts.	
				2045												
				3000												
				5555												
				3146												
				3350												
				3302												
				2653												
				3227												
				3215												
				2979												
				3574												
				3543												
				5220												
				3215												
				3543												
				3543												
				53110												

1923
21.91

2045 1
3000 2
5555 3
3146 4
3350 5
3302 6
2653 7
3227 8
3215 9
2979 10
3574 11
3543 12
5220 13
3215 14
3543 15
3543 16
53110 17

And Half Paid OCT 31 1925 10935 ✓
1st Half Paid MAY 2 1925 1524 ✓
2nd Half Paid OCT 31 1925 10935 ✓
1st Half Paid MAY 2 1925 1524 ✓
Paid MAY 29 1925 6892 ✓
Bal pd. May 29 1925 8052 ✓
289 ✓
Paid to Paid FEB 18 1925 }
Paid to Paid FEB 18 1925 } 998 ✓ 5955 ✓
1st Half Paid OCT 31 1925 10935 ✓
1st Half Paid MAY 2 1925 1524 ✓

1500 ✓ 1500
1778 ✓ 1777
3851 ✓
289 ✓
1613 ✓ 1614

4871 4236 6.35

123 + 24

Bal. due 2.84

13.13 = 13.88
11.48 = 12.13
16.00 = 16.91
16.41 = 17.35
3575 1902 2.85
3319 1831 2.75
3961 1974 2.96
3922 1902 2.85
5851 3599 5.37
16.41 = 17.35
3922 1902 2.85
16.41 = 17.35
3922 1902 2.85
16.41 = 17.35

59.55 8037 4891

Tax List of Real Property in the Town of Prima

71031—LOUIS R. BOW CO., ST. PAUL

IN WHOSE NAME ASSESSED	TO WHOM TRANSFERRED	Sold for Taxes	SUBDIVISION	Sec. or Lot	Town or Block	No. of Acres		VALUATION	No. School Dist.	General Taxes	School District	School District	School District	School District
						Rate	Rate				Rate	Rate		
											No.Mills	No.Mills	No.Mills	No.Mills
											\$ cts.	\$ cts.	\$ cts.	\$ cts.
											Dollars			
W. A. Spitzer Jr. & Co.			NE 1/4 of NE 1/4	32	H1 25	40		166	Unl.			1974		
Wm. Deibert			NW 1/4 of NE 1/4			40		166				1974		
A. J. Auld + Cecile Auld			SW 1/4 of NE 1/4			40		166				1974		
"			SE 1/4 of NE 1/4			40		166				1974		
Robert B. Whiteside			NE 1/4 of NW 1/4			40		166				1974		
"			NW 1/4 of NW 1/4			40		183				2176		
"			SW 1/4 of NW 1/4			40		166				1974		
S. A. Dodd			SE 1/4 of NW 1/4			40		166				1974		
"			NE 1/4 of SW 1/4			40		166				1974		
"			NW 1/4 of SW 1/4			40		166				1974		
"			SW 1/4 of SW 1/4			40		166				1974		
"			SE 1/4 of SW 1/4			40		166				1974		
A. J. Auld + Cecile Auld			NE 1/4 of SE 1/4			40		166				1974		
"			NW 1/4 of SE 1/4			40		166				1974		
"			SW 1/4 of SE 1/4			40		166				1974		
"			SE 1/4 of SE 1/4			40		166				1974		
						640		2673				31786		

Cass County, Minnesota, for Taxes for the Year 1924

Highway Ditch No.	Ditch No.	Ditch No.	Ditch No.	TOTAL TAXES	PAID	WHEN PAID	No. of Receipt	March Settlement	June Settlement	Penalty	November Settlement	Penalty	Collections to First Monday in January	Penalty	Delinquent on First Monday in January	REMARKS
\$ cts.	\$ cts.	\$ cts.	\$ cts.	\$ cts.		Month Day Year		\$ cts.	\$ cts.	\$ cts.	\$ cts.	\$ cts.	\$ cts.	\$ cts.	\$ cts.	
821				2795	1											
821				2795	2											
				1974	3											
829				2303	4											
					5											
1148				3122	6										3483	1974 2.96 = 11.48 = 12.13
1313				3489	7										3890	2176 3.26 = 13.13 = 13.88
1034				3008	8										3363	1974 2.96 = 10.34 = 10.93
411				2385	9											
					10											
				1974	11											
				1974	12											
				1974	13											
				1974	14											
					15											
				1974	16											
				1974	17											
				1974	18											
				1974	19											
					20											
5877				37663												

2nd Half Paid AUG 29 1925
 1st Half Paid MAY 25 1925

903 ✓
 4448

6000 ✓

4281

~~Dec 2nd half 4281~~

6000 4281

Tax List of Real Property in the Town of Reina

Cass County, Minnesota, for Taxes for the Year 1924

IN WHOSE NAME ASSESSED	TO WHOM TRANSFERED	Sold for Taxes	SUBDIVISION	Sec. or Lot	Town or Block	No. of Acres		VALUATION	No. School Dist.	General Taxes	School District	School District	School District	School District	Highway Ditch No.	Ditch No.	Ditch No.	Ditch No.	TOTAL TAXES	PAID	WHEN PAID	No. of Receipt	March Settlement	June Settlement	Penalty	November Settlement	Penalty	Collections to First Monday in January	Penalty	Delinquent on First Monday in January	REMARKS			
						Rate	Rate				Rate	Rate																						
						Dollars					\$ cts.	\$ cts.	\$ cts.	\$ cts.	\$ cts.	\$ cts.	\$ cts.	\$ cts.	\$ cts.	Month Day Year		\$ cts.	\$ cts.	\$ cts.	\$ cts.	\$ cts.	\$ cts.	\$ cts.	\$ cts.	\$ cts.				
Robert B. Whiteside	Immigration Land Co.		NE 1/4 of NE 1/4	33	141	25	40	172	Unl.		2045				656				2701	1	2nd Half Paid	OCT 31 1925	10933v		1350		1351							
"	"		NW 1/4 of NE 1/4				40	172			2045			821				2866	2	1st Half Paid	MAY 29 1925	7524												
"	"		SW 1/4 of NE 1/4				40	172			2045			656				2701	3	1st Half Paid	MAY 20 1925	9524v												
Robert B. Whiteside			SE 1/4 of NE 1/4				40	172			2045			821				2866	4	1st Half Paid	MAY 20 1925	7249		2783		2784								
John J. McLiffie			NE 1/4 of NW 1/4				40	172			2045			656				2701	6															
"			NW 1/4 of NW 1/4				40	172			2045			656				2701	7															
"			SW 1/4 of NW 1/4				40	172			2045			492				2537	8															
"			SE 1/4 of NW 1/4				40	172			2045			656				2701	9															
Immigration Land Co.			NE 1/4 of SW 1/4				40	172			2045							2045	11	1st Half Paid	MAY 20 1925													
"			NW 1/4 of SW 1/4				40	172			2045							2045	12	2nd Half Paid	OCT 12 1925	9524v		4078		4078								
"			SW 1/4 of SW 1/4				40	171			2033							2033	13	1st Half Paid	MAY 20 1925	4249												
"			SE 1/4 of SW 1/4				40	171			2033							2033	14	1st Half Paid	MAY 20 1925													
"			NE 1/4 of SE 1/4				40	171			2033							2033	16	2nd Half Paid	OCT 12 1925													
"			NW 1/4 of SE 1/4				40	171			2033							2033	17	1st Half Paid	MAY 20 1925	9524v		4066		4066								
"			SW 1/4 of SE 1/4				40	171			2033							2033	18	1st Half Paid	MAY 20 1925	4249												
"			SE 1/4 of SE 1/4				40	171			2033							2033	19	2nd Half Paid	OCT 12 1925													
						640		2746			32648			5414				38062					13710		13712									

Tax List of Real Property in the Town of Lima

71931—LOUIS BROW CO., ST. PAUL

Cass County, Minnesota, for Taxes for the Year 1924

IN WHOSE NAME ASSESSED	TO WHOM TRANSFERRED	Sold for Taxes	SUBDIVISION	Sec. or Lot	Town or Block	Rng.	No. of Acres		VALUATION	No. School Dist.	General Taxes	School District	School District	School District	School District	Highway Ditch No.	Ditch No.	Ditch No.	Ditch No.	TOTAL TAXES	PAID	WHEN PAID	No. of Receipt	March Settlement	June Settlement	Penalty	November Settlement	Penalty	Collections to First Monday in January	Penalty	Delinquent on First Monday in January	REMARKS					
							No. Rate Mills	No. Rate Mills				No. Rate Mills	No. Rate Mills	\$ cts.	\$ cts.																		\$ cts.	\$ cts.	\$ cts.	Month	Day
A. E. Falson			NE 1/4 of NE 1/4	36	141	25	40	161	101				1914							1914	1																
"			NW 1/4 of NE 1/4				40	166					1974							1974	2																
"			SW 1/4 of NE 1/4				40	166					1974							1974	3																
"			SE 1/4 of NE 1/4				40	161					1914							1914	4																
Frank W. Smetana			NE 1/4 of NW 1/4				40	166					1974							1974	6																
"			NW 1/4 of NW 1/4				40	161					1914	492						2406	7																
"			SW 1/4 of NW 1/4				40	161					1914	411						2325	8																
"			SE 1/4 of NW 1/4				40	166					1974							1974	9																
Austin L. Hamilton			NE 1/4 of SW 1/4				40	166					1974							1974	11																
"			NW 1/4 of SW 1/4				40	166					1974	370						2344	12																
August Vandeplass			SW 1/4 of SW 1/4				40	161					1914	1148						3062	13																
"			SE 1/4 of SW 1/4				40	166					1974							1974	14																
Sever Gervais			NE 1/4 of SE 1/4				40	166					1974							1974	16																
H. H. Landel			NW 1/4 of SE 1/4				40	166					1974							1974	17																
"			SW 1/4 of SE 1/4				40	166					1974							1974	18																
Sever Gervais			SE 1/4 of SE 1/4				40	166					1974							1974	19																
							640	2631					31284					2421					33765					4339					4340				
Grand Totals							22561.63	104689					8016.24					1201.88					14777.52					472.57					414246				