

1924
TAX LIST
LIMA

Auditor's Office, Cass County, Minn.

I, A. A. Gater, Auditor of Cass County, and State of Minnesota, do hereby certify that the following is a correct list of the taxes levied on the Real and Personal Property in the Township of Lima for the year 1924.

Witness my hand and official seal this 5 day of January, 1926.

(SEAL) A. A. Gater County Auditor.

By _____ Deputy.

Treasurer's Office, Cass County, Minn.

Received this, the first Monday (being the 5th day) of January, A. D. 1926, of A. A. Gater, Auditor of Cass County, Minnesota, the Tax List of all taxable Real and Personal Property in the Town of Lima in said County, for the year A. D. 1924, as specified above, and amounting to Fifteen thousand ninety six and 11/100 DOLLARS.

A. J. McKeown County Treasurer.

By A. M. Deputy.

Office of County Treasurer, Cass County, Minn.

To A. A. Gater, County Auditor, January 4 1926, Town of Lima in said Cass County, for the year 1924.

Sir: I herewith return to you the Tax List for the Town of Lima in said Cass County, for the year 1924, heretofore received from you. I certify that I have compared the same with the duplicate receipts in your office, and have written opposite the amount of each tax so received the words "One Half Paid," or "Paid in Full," as the case may be, and the number of my receipt given in discharge of said tax, and each tract or lot of Real Property against which the taxes remain unpaid is delinquent for said year.

A. J. McKeown County Treasurer.

By A. M. Deputy.

Auditor's Office, Cass County, Minn.

Received of A. J. McKeown, County Treasurer, the Tax List for the Town of Lima in said County of Cass, for the year 1924.

A. A. Gater County Auditor.

By _____ Deputy.

TABULAR SCHEDULE OF VALUATIONS

Levied in the Town of Lewis

RATES AND TAXES

COUNTY OF Cass, STATE OF MINNESOTA.

No. of School Dist.	VALUATION BY SCHOOL DISTRICTS					RATE OF STATE TAXES				RATE OF COUNTY TAXES							RATE OF TOWN TAXES							Total Rate of Town Tax		
	Total Acres	Av. Value per Acre	Value of Lands other than Town Lots Including Structures	Value of Town and City Lots Including Structures	Personal Property	Total Value of all Property Except Money and Credits	State Rev.	State Sch'l	Tchr. Ins. and Ret.	Total Rate of State Tax	Co. Rev.	Co. R. & B.	Co. Poor	Road Maint.	Co. Bond and Int.	Co. Skg.	Co. Bldg.	Total Rate of County Tax	Town Rev.	Town R. & B.	Town Drag.	Town Bldg.	Town State Loan		Town Fire Patrol	Town Judicial Dist. #1
<u>Un. C #1</u>			<u>46760</u>		<u>753</u>	<u>47513</u>	<u>4.5</u>	<u>1.33</u>	<u>.05</u>	<u>5.89</u>	<u>5.</u>	<u>7.</u>	<u>4.19</u>	<u>2.</u>	<u>4.24</u>	<u>8.47</u>	<u>.16</u>	<u>3.00</u>	<u>2.6</u>	<u>15.</u>	<u>1.</u>		<u>15.7</u>	<u>4.1</u>	<u>1.9</u>	<u>40.3</u>
			<u>49689</u>		<u>1424</u>	<u>51113</u>	<u>Minn. Gen. Ass.</u>	<u>.11</u>			<u>Cass-M. J. R.</u>	<u>1.</u>														
	<u>22561</u>	<u>63</u>																								
	<u>4</u>	<u>27</u>	<u>96449</u>																							
					<u>2177</u>	<u>98626</u>																				

RATE OF SCHOOL TAXES										TAXES LEVIED									
School Local 1 Mill	School Spec.	School State Loan	Sinking Int. Fund.	Total Rate of School Taxes	Total Rate of all Taxes	LOCAL 1 MILL AND SPECIAL SCHOOL TAXES BY DISTRICTS					ALL OTHER TAXES								
1 Mill	Mills	1 Mills	Mills	Mills	Mills	Local 1 Mill	Special	Interest Sinking	State Loan	Total School Tax	FUNDS	Rate	AMOUNTS						
<u>1.</u>	<u>3426</u>		<u>4.65</u>	<u>.73</u>	<u>4064</u>	<u>4751</u>	<u>1677</u>	<u>80</u>	<u>77094</u>	<u>3468</u>	State Revenue	<u>4.5</u>	<u>443.82</u>						
<u>1.</u>	<u>7706</u>	<u>5.02</u>		<u>83.05</u>	<u>161.33</u>	<u>5111</u>	<u>3938</u>	<u>77</u>			State School	<u>1.33</u>	<u>171.31</u>						
						<u>9862</u>	<u>5566</u>	<u>57</u>			State Teachers Ins. and Ret.	<u>.05</u>	<u>4.93</u>						
									<u>25659</u>	<u>424647</u>	Minn. Gen. Ass.	<u>.11</u>	<u>10.95</u>						
											Co. Revenue	<u>5.</u>	<u>493.15</u>						
											Co. Road and Bridge	<u>7.</u>	<u>690.38</u>						
											Co. Poor	<u>4.19</u>	<u>413.24</u>						
											Co. Bond and Interest	<u>4.24</u>	<u>418.17</u>						
											Co. Sinking	<u>8.47</u>	<u>835.36</u>						
											Co. Building	<u>.16</u>	<u>15.78</u>						
											Co. Maintenance	<u>2.</u>	<u>197.25</u>						
											Cass-Madison J. Rd.	<u>1.</u>	<u>98.63</u>						
											Town Revenue	<u>2.6</u>	<u>256.43</u>						
											Town Road and Bridge	<u>15.</u>	<u>1479.39</u>						
											Town Drag.	<u>1.</u>	<u>98.63</u>						
											Town St. Loan	<u>15.7</u>	<u>1548.43</u>						
											Town Building	<u>1.9</u>	<u>187.39</u>						
											Town Fire Patrol	<u>4.1</u>	<u>404.37</u>						
											School Local 1 mill		<u>98.62</u>						
											School Special		<u>5566.57</u>						
											School Sinking		<u>770.94</u>						
											School St. Loan		<u>3468</u>						
											School (Main)		<u>756.59</u>						
											TOTALS		<u>15096.77</u>						

22561⁶³ 4²⁷ 96449

2177 98626

Valuation 3686 Amount of Tax 11.08

MONEY AND CREDITS

84
Book Footings, \$15107

83
Total Levy, \$15107

State of Minnesota
County of Cass

I, A. A. Galin, Auditor of said County and correct schedule, showing the valuation of all the taxable property in the County of Cass, in said County, the several rates of taxation and totals of the several Tax Funds levied thereon for the year A. D. 1927.

Witness my hand and official seal this 5 day of January, A. D. 1927

(SEAL)
By A. A. Galin County Auditor.
Deputy

Tax List of Real Property in the Town of Leina

71931 - Cass App Co., et. al.

IN WHOSE NAME ASSESSED	TO WHOM TRANSFERRED	Sold for Taxes	SUBDIVISION	No. of Acres		VALUATION	No. School Dist.	General Taxes	School District	School District	School District	School District
				Sec. or Lot	Town or Block				Rate	Rate	Rate	Rate
						Dollars			\$ cts.	\$ cts.	\$ cts.	\$ cts.
<i>Immigration Land Co.</i>			NE 1/4 of NE 1/4	1	39.75	149 C1			2404			
			NW 1/4 of NE 1/4	2	39.85	149			2404			
			SW 1/4 of NE 1/4	3	40	149			2404			
			SE 1/4 of NE 1/4	4	40	149			2404			
			NE 1/4 of NW 1/4	5	39.75	149			2404			
<i>J.B. Walker</i>			NW 1/4 of NW 1/4	6	39.65	149			2404			
			SW 1/4 of NW 1/4	7	40	149			2404			
			SE 1/4 of NW 1/4	8	40	149			2404			
<i>Immigration Land Co.</i>			NE 1/4 of SW 1/4	9	40	148			2388			
<i>J.B. Walker</i>			NW 1/4 of SW 1/4	10	40	148			2388			
			SW 1/4 of SW 1/4	11	40	148			2388			
			SE 1/4 of SW 1/4	12	40	148			2388			
<i>Immigration Land Co.</i>			NE 1/4 of SE 1/4	13	40	148			2388			
			NW 1/4 of SE 1/4	14	40	148			2388			
			SW 1/4 of SE 1/4	15	40	148			2388			
			SE 1/4 of SE 1/4	16	40	148			2388			
						639.20	2376		38336			

Cass County, Minnesota, for Taxes for the Year 1924

Highway Ditch No.	Ditch No.	Ditch No.	Ditch No.	TOTAL TAXES	PAID	WHEN PAID	No. of Receipt	March Settlement	June Settlement	Penalty	November Settlement	Penalty	Collections to First Monday in January	Penalty	Delinquent on First Monday in January	REMARKS
				2404		OCT 12 1925										
				2404	1st Half Paid	MAY 20 1925	9520									
				2404	2nd Half Paid	OCT 12 1925	4745									
				2404	1st Half Paid	MAY 20 1925	4745		2404		2404					
				2404	2nd Half Paid	OCT 12 1925	9570									
				2404	1st Half Paid	MAY 20 1925	4745		2404		2404					
				2404	2nd Half Paid	OCT 12 1925	9570									
				2404	1st Half Paid	MAY 20 1925	4745		6702		1202					
				2404	2nd Half Paid	OCT 12 1925	9969									
				2404	1st Half Paid	MAY 29 1925	6069		3606		3606					
				2404	2nd Half Paid	OCT 22 1925	6069									
				2388	1st Half Paid	MAY 20 1925	9520									
				2388	2nd Half Paid	OCT 22 1925	4245									
				2388	1st Half Paid	MAY 20 1925	4245		1194		1194					
				2388	2nd Half Paid	OCT 22 1925	9969									
				2388	1st Half Paid	MAY 29 1925	6069		3582		3582					
				2388	2nd Half Paid	OCT 22 1925	6069									
				2388	1st Half Paid	MAY 20 1925	9520									
				2388	2nd Half Paid	OCT 22 1925	4245									
				2388	1st Half Paid	MAY 20 1925	4245		1194		1194					
				2388	2nd Half Paid	OCT 12 1925	9570									
				2388	1st Half Paid	MAY 20 1925	4745		2388		7388					
				2388	2nd Half Paid	OCT 12 1925	9570									
				2388	1st Half Paid	MAY 20 1925	4245		1194		1194					
				38336				19168		19168						

Tax List of Real Property in the Town of Rice of Rice

Cass County, Minnesota, for Taxes for the Year 1924

IN WHOSE NAME ASSESSED	TO WHOM TRANSFERRED	Sold for Taxes	SUBDIVISION	Sec. or Lot	Town or Block	No. of Acres		VALUATION	No. School Dist.	General Taxes	School District No. 1	School District No. 2	School District No. 3	School District No. 4	Highway Ditch No.	Ditch No.	Ditch No.	Ditch No.	TOTAL TAXES	PAID	WHEN PAID	No. of Receipt	March Settlement	June Settlement	Penalty	November Settlement	Penalty	Collections to First Monday in January	Penalty	Delinquent on First Monday in January	REMARKS		
						Rate Mills	Rate Mills				Rate Mills	Rate Mills	\$	cts.																		\$	cts.
J. B. Walker			NE 1/4 of NE 1/4	3	141	25	39.50	119	01		2404								2404	2nd Half Paid	OCT 31 1925												
"			NW 1/4 of NE 1/4				39.30	149			2404								2404	1st Half Paid	MAY 9 1925	11828											
"			SW 1/4 of NE 1/4				40	147			2404								2404	2nd Half Paid	OCT 31 1925	7912	4507		4808								
"			SE 1/4 of NE 1/4				40	149			2404								2404	2nd Half Paid	OCT 31 1925												
John J. Kuley, No. 1, P. Behring, No. 2, E. S. Munnell, No. 3, R. S. Munnell, No. 4	Wm. L. Mc Garry		NE 1/4 of NW 1/4				39.10	138			2226								2226	6													
St. Anthony Lbr. Co.	J. B. Walker		NW 1/4 of NW 1/4				38.90	138			2226								2226	7	PAID in J. MAY 9 1925	5665		2226									
"	"		SW 1/4 of NW 1/4				40	138			2226								2226	8	1st Half Paid	MAY 9 1925	11328										
"	"		SE 1/4 of NW 1/4				40	148			2404								2404	9	2nd Half Paid	OCT 31 1925	11528	1113		1113							
"	"		NE 1/4 of SW 1/4				40	148			2388								2388	10	2nd Half Paid	OCT 31 1925	11828										
L. W. Lankham	"		NW 1/4 of SW 1/4				40	148			2388								2388	11	1st Half Paid	MAY 9 1925	7912		1194		1194						
J. B. Walker	"		SW 1/4 of SW 1/4				40	148			2388								2388	12	1st Half Paid	MAY 9 1925	11328										
"	"		SE 1/4 of SW 1/4				40	148			2388								2388	13	2nd Half Paid	OCT 31 1925	7912	1194		1194							
"	"		NE 1/4 of SE 1/4				40	148			2388								2388	14	2nd Half Paid	OCT 31 1925	11528	1194		1194							
"	"		NW 1/4 of SE 1/4				40	148			2388								2388	15	2nd Half Paid	OCT 31 1925	7912	1194		1194							
"	"		SW 1/4 of SE 1/4				40	148			2388								2388	16	1st Half Paid	MAY 9 1925	11878										
"	"		SE 1/4 of SE 1/4				40	148			2388								2388	17	2nd Half Paid	OCT 31 1925	7912	4776		4776							
"	"						40	148			2388								2388	18	2nd Half Paid	MAY 9 1925											
"	"						40	148			2388								2388	19	2nd Half Paid	OCT 31 1925											
							636.80	2343			37802								37802				1890		16675								

Tax List of Real Property in the Town of Leina

Cass County, Minnesota, for Taxes for the Year 1924

IN WHOSE NAME ASSESSED	TO WHOM TRANSFERRED	Sold for Taxes	SUBDIVISION	Sec. Lot	Town or Block	No. of Acres		VALUATION	No. School Dist.	General Taxes	School District	School District	School District	School District	Highway Ditch No.	Ditch No.	Ditch No.	Ditch No.	TOTAL TAXES	PAID	WHEN PAID	No. of Receipt	March Settlement	June Settlement	Penalty	November Settlement	Penalty	Collections to First Monday in January	Penalty	Delinquent on First Monday in January	REMARKS		
						Rate	Rate				Rate	Rate																					
								Dollars			\$ cts.	\$ cts.	\$ cts.	\$ cts.	\$ cts.	\$ cts.	\$ cts.	\$ cts.	\$ cts.	\$ cts.	\$ cts.	\$ cts.	\$ cts.	\$ cts.	\$ cts.	\$ cts.	\$ cts.	\$ cts.	\$ cts.	\$ cts.			
Immigration Land Co.			NE 1/4 of NE 1/4 Lot 1	3	64	25	38.77	139.01			2243								2243	2nd Half Paid	OCT 12 1925	9570											
H. M. Auld			NW 1/4 of NE 1/4 " 2				38.72	248			2388								2388	1st Half Paid	MAY 20 1925	4745	1177		1121								
B. R. Heeseman			SW 1/4 of NE 1/4				40	149			2404								2404	2nd Half Paid	OCT 31 1925	11926											
J. L. Waterbury			SE 1/4 of NE 1/4				40	114			1839								1839	1st Half Paid	MAY 29 1925	7801	2202		1202								
Immigration Land Co.			NE 1/4 of NW 1/4 " 3				38.67	149			2404								2404	2nd Half Paid	OCT 12 1925	9570											
"			NW 1/4 of NW 1/4 " 4				38.62	149			2404								2404	1st Half Paid	MAY 20 1925	4745	2404		2404								
Clover Belt Land Co.			SW 1/4 of NW 1/4				40	114			1839								1839	2nd Half Paid	OCT 31 1925	11926											
"			SE 1/4 of NW 1/4				40	149			2404								2404	1st Half Paid	MAY 20 1925	4745	2404		2404								
A. J. + Carrie L. Sean			NE 1/4 of SW 1/4				40	114			1839								1839	2nd Half Paid	OCT 31 1925	11926											
C. Morrison			NW 1/4 of SW 1/4				40	125			2017								2017	1st Half Paid	MAY 29 1925	8478	919		920								
C. A. Smith			SW 1/4 of SW 1/4				40	125			2017								2017	Paid 2/27/26 by Del. Rec. # 20183													
B. R. Heeseman			SE 1/4 of SW 1/4				40	149			1839								1839	2nd Half Paid	OCT 31 1925	11926											
"			NE 1/4 of SE 1/4				40	149			2404								2404	1st Half Paid	MAY 20 1925	4745	2202		1202								
B. R. Heeseman			NW 1/4 of SE 1/4				40	149			2404								2404	2nd Half Paid	OCT 31 1925	11926											
"			SW 1/4 of SE 1/4				40	149			2404								2404	1st Half Paid	MAY 29 1925	7801	2404		2404								
H. M. Auld			SE 1/4 of SE 1/4				40	149			2404								2404	2nd Half Paid	OCT 31 1925	11926											
								634.78	2185		35253								35253				10173		10173								

Tax List of Real Property in the Town of Linn

Cass County, Minnesota, for Taxes for the Year 1924

IN WHOSE NAME ASSESSED	TO WHOM TRANSFERED	Sold for Taxes	SUBDIVISION	Sec. or Lot	Town or Block	Rng.	No. of Acres		VALUATION	No. School Dist.	General Taxes	School District				Highway Ditch No.	Ditch No.	Ditch No.	Ditch No.	TOTAL TAXES	PAID	WHEN PAID	No. of Receipt	March Settlement	June Settlement	Penalty	November Settlement	Penalty	Collections to First Monday in January	Penalty	Delinquent on First Monday in January	REMARKS				
							Acres 100's	Acres 100's				No. Rate Mills	No. Rate Mills	No. Rate Mills	No. Rate Mills																		\$	cts.	\$	cts.
H. P. Roberts			NE 1/4 of NE 1/4	6	1-18	25	38	43	172	01		2775							2775																	
J. C. Hessman			NW 1/4 of NE 1/4					38	88	172		2775							2775																	
Charles Johnson	Fred B. Lambert		SW 1/4 of NE 1/4					40		376		6066							6066																	
H. P. Roberts			SE 1/4 of NE 1/4					40		183		2952							2952																	
J. C. Hessman			NE 1/4 of NW 1/4					39	33	195		3146							3146																	
Quinn Estlin	Beulah Johnson		NW 1/4 of NW 1/4					33	94	224		3614							3614																	
Christina Smith	Otto J. Miller		SW 1/4 of NW 1/4					38	44	388		6260							6260																	
H. Salberg			SE 1/4 of NW 1/4					40		459		7405							7405																	
Eugene Miller			SW 1/4 of NW 1/4					5		54		871							871																	
E. R. Young			NE 1/4 of SW 1/4					40		206		3323							3323																	
			NW 1/4 of SW 1/4					37	72	227		3694							3694																	
			SW 1/4 of SW 1/4					37		200		3227							3227																	
			SE 1/4 of SW 1/4					40		200		3227							3227																	
J. E. Lundrigan			NE 1/4 of SE 1/4					40		177		2856							2856																	
Rolf L. Nelson	Frank B. Nelson		NW 1/4 of SE 1/4					40		376		6066							6066																	
J. B. Sorenson			SW 1/4 of SE 1/4					40		200		3227							3227																	
			SE 1/4 of SE 1/4					40		138		2226							2226																	
							628	74	374		697	10					637	10																		

1 Paid 2/7/25 by Del. Rec. #20185
 2 2nd Half Paid OCT 31 1925 11732 ✓
 3 1st Half Paid MAY 29 1925 5237 ✓
 4 Paid in Full FEB 21 1925 1151 ✓ 6066
 5 Paid 2/7/25 by Del. Rec. #20185
 6 2nd Half Paid OCT 31 1925 11732 ✓
 7 1st Half Paid MAY 29 1925 5237 ✓
 8 Paid 7/5/25 by Del. Rec. #20066
 9 2nd Half Paid OCT 31 1925 10859 ✓
 10 1st Half Paid MAY 29 1925 5237 ✓
 11 Paid in Full FEB 14 1925 795 ✓ 871
 12 2nd Half Paid OCT 31 1925 17758 ✓
 13 1st Half Paid MAY 29 1925 3403 ✓
 14 2nd Half Paid OCT 31 1925 11078 ✓
 15 1st Half Paid MAY 29 1925 7930 ✓
 16 2nd Half Paid OCT 31 1925 1
 17
 18
 19
 20

6976 6066 9.10
 3711 3227 4.84

6937 16520 10527

Tax List of Real Property in the Town of Randa of Randa

71931-COURT REPORT CO., ST. PAUL

IN WHOSE NAME ASSESSED	TO WHOM TRANSFERRED	Sold for Taxes	SUBDIVISION	Sec. or Lot	Town or Block	Rng.	No. of Acres		VALUATION	No. School Dist.	General Taxes	School District No. 1	School District No. 2	School District No. 3	School District No. 4			
							Rate	Rate				Rate	Rate					
											Mills				Mills			
											\$	cts.	\$	cts.	\$	cts.	\$	cts.
J. B. Larsson			NE 1/4 of NE 1/4	1	141	25	10	172	01			2775						
H. E. Shivers			NW 1/4 of NE 1/4	2			40	172				2775						
			SW 1/4 of NE 1/4	3			40	352				5679						
J. B. Larsson			SE 1/4 of NE 1/4	4			40	459				7405						
				5														
Geo. M. Clement			NE 1/4 of NW 1/4	6			40	200				3227						
			NW 1/4 of NW 1/4 Lot 1	7			36	76				3243						
			SW 1/4 of NW 1/4	8			20	107				1726						
H. E. Shivers			SE 1/4 of NW 1/4	9			39	09				183						
W. H. Reasoner			SW 1/4 of NW 1/4	10			17	10				86						
H. E. Shivers			NE 1/4 of SW 1/4	11			36	60				172						
J. M. Egan			NW 1/4 of SW 1/4	12			37	24				183						
Hub. Hansen & Wm. Ward			SW 1/4 of SW 1/4	13			37	18				177						
			SE 1/4 of SW 1/4	14			40	183				2952						
				15														
E. B. Roe			NE 1/4 of SE 1/4	16			40	228				3678						
			NW 1/4 of SE 1/4	17			38	64				222						
E. J. Roscher & O. A. O. O.			SW 1/4 of SE 1/4	18			36	58				183						
Immigration Land			SE 1/4 of SE 1/4	19			39	32				196						
				20														
							618.81	2487				562.87						

Cass County, Minnesota, for Taxes for the Year 1924

Highway Ditch No.	Ditch No.	Ditch No.	Ditch No.	TOTAL TAXES	PAID	WHEN PAID	No. of Receipt	March Settlement	June Settlement	Penalty	November Settlement	Penalty	Collections to First Monday in January	Penalty	Delinquent on First Monday in January	REMARKS
				2775	1	Paid in Full OCT 31 1925	12160									
				2775	2	1st. Half Paid MAY 2 1925	11067									
				5679	3	1st. Half Paid MAY 2 1925	5728									
				7405	4	Paid in Full OCT 31 1925	12160									
				3227	5											
				3243	6											
				3243	7											
				1726	8											
				183	9	1st. Half Paid OCT 31 1925	11067									
				1387	10	Paid in Full DEC 15 1925	15823									
				2775	11	1st. Half Paid OCT 31 1925	11067									
				2952	12	Paid in Full MAY 25 1925	4386									
				2856	13											
				2952	14											
				3678	16	1st. Half Paid OCT 31 1925	11907									
				3582	17	1st. Half Paid MAY 2 1925	5728									
				2952	18	1st. Half Paid OCT 31 1925	11067									
				3162	19	1st. Half Paid OCT 12 1925	4246									
				562.87	20											
							17054									

As per court findings 4.98 and order

As per court findings 4.86 and order.

See Abstract # 674

bal. due 11.52

Tax List of Real Property in the Town of Linn

Cass County, Minnesota, for Taxes for the Year 1924

IN WHOSE NAME ASSESSED	TO WHOM TRANSFERED	Sold for Taxes	SUBDIVISION	Sec. or Lot	Town or Rng. Block	No. of Acres	VALUATION	No. School Dist.	General Taxes	School District	School District	School District	School District	Highway Ditch No.	Ditch No.	Ditch No.	Ditch No.	TOTAL TAXES	PAID	WHEN PAID	No. of Receipt	March Settlement	June Settlement	Penalty	November Settlement	Penalty	Collections to First Monday in January	Penalty	Delinquent on First Monday in January	REMARKS		
										No. Rate Mills	No. Rate Mills	No. Rate Mills	No. Rate Mills																		\$ cts.	\$ cts.
Marcus Nelson			NE 1/4 of NE 1/4	8	141 25	58 85	200 01			3227								3227														
"			NW 1/4 of NE 1/4																													
"			SW 1/4 of NE 1/4			31 40	125			2017								2017														
"			SE 1/4 of NE 1/4			40	161			2597								2597														
J B Armons			NE 1/4 of NW 1/4																													
"			NW 1/4 of NW 1/4			17 70	80			1291								1291														
"			SW 1/4 of NW 1/4			38 75	154			2484								2484														
"			SE 1/4 of NW 1/4			25 90	103			1662								1662														
Erick & Roe			NE 1/4 of SW 1/4			40	183			2952								2952														
"			NW 1/4 of SW 1/4			40	470			7583								7583														
"			SW 1/4 of SW 1/4			40	195			3146								3146														
"			SE 1/4 of SW 1/4			40	183			2952								2952														
The Sheldon Co.			NE 1/4 of SE 1/4			40	172			2775								2775														
"			NW 1/4 of SE 1/4			40	161			2597								2597														
"			SW 1/4 of SE 1/4			40	57			920								920														
John Paulsen	Wm. P. Paulsen		SE 1/4 of SE 1/4			40	183			2952								2952														
						526 60	2427			39155								39155														

Paid in Full SEP 26 1925
 Paid in Full SEP 26 1925
 Paid in Full SEP 26 1925
 9209 ✓
 5437 217

2nd Half Paid OCT 11 1925
 1st Half Paid MAY 20 1925
 2nd Half Paid OCT 11 1925
 1st Half Paid MAY 20 1925
 11907 ✓
 8317 ✓
 8316

Paid in Full OCT 26 1925
 1st Half Paid MAY 29 1925
 10217 ✓
 7836
 1476 ✓
 1476

9798
 15229

Tax List of Real Property in the Town of Leina

71031—LOWE & BOW CO., ST. PAUL

IN WHOSE NAME ASSESSED	TO WHOM TRANSFERRED	Sold for Taxes	SUBDIVISION	Sec. or Lot	Town or Block	No. of Acres		VALUATION	No. School Dist.	General Taxes	School District No. 21	School District	School District	School District
						Rate	Rate				Rate	Rate		
Immigration Land Co.			NE 1/4 of NE 1/4	7	40	20	161	01		2597				
Marcus Nelson			NW 1/4 of NE 1/4			40	161			2597				
Harry M. Auld			SW 1/4 of NE 1/4			40	161			2597				
			SE 1/4 of NE 1/4			40	172			2775				
Marcus Nelson			NE 1/4 of NW 1/4			40	261			2597				
			NW 1/4 of NW 1/4			40	161			2597				
James L. Gardner	Geo. H. Steinmetz		SW 1/4 of NW 1/4			40	161			2597				
Harry M. Auld			SE 1/4 of NW 1/4			40	161			2597				
Immigration Land Co.			NE 1/4 of SW 1/4			40	183			2952				
James L. Gardner	Geo. H. Steinmetz		NW 1/4 of SW 1/4			40	172			2775				
			SW 1/4 of SW 1/4			40	172			2775				
			SE 1/4 of SW 1/4			40	350			5647				
Harry M. Auld			NE 1/4 of SE 1/4			40	182			2936				
			NW 1/4 of SE 1/4			40	282			2936				
			SW 1/4 of SE 1/4			40	204			3291				
			SE 1/4 of SE 1/4			40	182			2936				
						640	2256			47202				

Cass County, Minnesota, for Taxes for the Year 1924

Highway Ditch No.	Ditch No.	Ditch No.	Ditch No.	TOTAL TAXES	PAID	WHEN PAID	No. of Receipt	March Settlement	June Settlement	Penalty	November Settlement	Penalty	Collections to First Monday in January	Penalty	Delinquent on First Monday in January	REMARKS
				2597	1	1st Half Paid										
				2597	2	MAY 20 1925	4246		1299		1298					
				2597	3											
				2775	4											
				2597	6											
				2597	7											
				2597	8	Paid in Full		FEB 4 1925		407		2597				
				2597	9											
				2952	11	2nd Half Paid		NOV 12 1925		4246		1476		1476		
				2775	12	Paid in Full		FEB 4 1925								
				2775	13	Paid in Full		FEB 4 1925		407		11197				
				5647	14	Paid in Full		FEB 4 1925								
				2936	16											
				2936	17											
				3291	18											
				2936	19											
				47202					43794		2775		2774			

Tax List of Real Property in the Town of Linn of Linn

71031—LOUISIANA CO., ST. PAUL

IN WHOSE NAME ASSESSED	TO WHOM TRANSFERRED	Sold for Taxes	SUBDIVISION	Sec. or Lot	Town or Block	No. of Acres		VALUATION	No. School Dist.	General Taxes	School District No.	School District No.	School District No.	School District No.	
						Acres	100 th				Rate Mills	Rate Mills	Rate Mills	Rate Mills	
<i>B. Wicker</i>			NE 1/4 of NE 1/4	40	411 25	40	161	2597							
			NW 1/4 of NE 1/4			40	161	2597							
			SW 1/4 of NE 1/4			40	161	2597							
			SE 1/4 of NE 1/4			40	161	2597							
				NE 1/4 of NW 1/4			40	166	2678						
				NW 1/4 of NW 1/4			40	166	2678						
				SW 1/4 of NW 1/4			40	166	2678						
				SE 1/4 of NW 1/4			40	166	2678						
<i>M. Auld</i>			NE 1/4 of SW 1/4			40	166	2678							
			NW 1/4 of SW 1/4			40	166	2678							
			SW 1/4 of SW 1/4			40	166	2678							
			SE 1/4 of SW 1/4			40	166	2678							
				NE 1/4 of SE 1/4			40	161	2597						
				NW 1/4 of SE 1/4			40	161	2597						
				SW 1/4 of SE 1/4			40	161	2597						
				SE 1/4 of SE 1/4			40	161	2597						
						640	2616	422.00							

Cass County, Minnesota, for Taxes for the Year 1924

Highway Ditch No.	Ditch No.	Ditch No.	Ditch No.	TOTAL TAXES	PAID	WHEN PAID	No. of Receipt	March Settlement	June Settlement	Penalty	November Settlement	Penalty	Collections to First Monday in January	Penalty	Delinquent on First Monday in January	REMARKS
				2597		1st. Half Paid MAY 29 1925	9969									
				2597		2nd. Half Paid OCT 22 1925										
				2597		1st. Half Paid MAY 29 1925	6069	5194								
				2597		2nd. Half Paid OCT 22 1925										
				2678		1st. Half Paid MAY 29 1925										
				2678		2nd. Half Paid OCT 22 1925	9969									
				2678		1st. Half Paid MAY 29 1925	6069	5356								
				2678		2nd. Half Paid OCT 22 1925										
				2597												
				2597												
				2597												
				2597												
				422.00				10550					10550			

Tax List of Real Property in the Town of Lima

Cass County, Minnesota, for Taxes for the Year 1924

IN WHOSE NAME ASSESSED	TO WHOM TRANSFERRED	Sold for Taxes	SUBDIVISION	Sec. or Lot	Town or Block	No. of Acres		VALUATION	No. School Dist.	General Taxes	School District No. <u>C1</u>	School District	School District	School District	Highway Ditch No.	Ditch No.	Ditch No.	Ditch No.	TOTAL TAXES	PAID	WHEN PAID	No. of Receipt	March Settlement	June Settlement	Penalty	November Settlement	Penalty	Collections to First Monday in January	Penalty	Delinquent on First Monday in January	REMARKS		
						Rate Mills	Rate Mills				Rate Mills	Rate Mills	\$ cts.	\$ cts.																		\$ cts.	\$ cts.
<i>Wm Guild</i>			NE 1/4 of NE 1/4	14	144 25	40	166	C1			2678								2678	1													
			NW 1/4 of NE 1/4			40	166				2678								2678	2													
			SW 1/4 of NE 1/4			40	166				2678								2678	3													
			SE 1/4 of NE 1/4			40	166				2678								2678	4													
			NE 1/4 of NW 1/4			40	172				2775								2775	16													
			NW 1/4 of NW 1/4			40	172				2775								2775	17													
			SW 1/4 of NW 1/4			40	172				2775								2775	18													
			SE 1/4 of NW 1/4			40	172				2775								2775	19													
<i>Harlan P. Roberts</i>			NE 1/4 of SW 1/4			40	172				2775								2775	11													
			NW 1/4 of SW 1/4			40	172				2775								2775	12													
<i>Grand Rapids Land & Cattle Co</i>			SW 1/4 of SW 1/4			40	161				2597								2597	13													
<i>Frank Taylor</i>			SE 1/4 of SW 1/4			40	158				2549								2549	14													
			NE 1/4 of SE 1/4			40	161				2597								2597	16													
<i>Fred Blair</i>			NW 1/4 of SE 1/4			40	166				2678								2678	17													
<i>Frank Taylor</i>			SW 1/4 of SE 1/4			40	154				2484								2484	18													
			SE 1/4 of SE 1/4			40	154				2484								2484	19													
						640	2650				427.51								427.51														

paid in full OCT 31 1925

2549 253

paid in full OCT 31 1925

4968 497

3191 2775 4.16
2775

7517

Tax List of Real Property in the Town of Reina

IN WHOSE NAME ASSESSED	TO WHOM TRANSFERRED	Sold for Taxes	SUBDIVISION	Sec. or Lot	Town or Block	No. of Acres		VALUATION	No. School Dist.	General Taxes	School District	School District	School District	School District
						Rate Mills	Rate Mills				Rate Mills	Rate Mills		
Weyerhaeuser et al			NE 1/4 of NE 1/4	40	41 25	40	172	C1		27 75				
Henry O. Salvanson			NW 1/4 of NE 1/4	40		40	177			32 10				
"			SW 1/4 of NE 1/4	40		40	172			27 75				
Weyerhaeuser et al			SE 1/4 of NE 1/4	40		40	172			27 75				
"														
"			NE 1/4 of NW 1/4	40		40	177			28 56				
"			NW 1/4 of NW 1/4	40		40	177			28 56				
"			SW 1/4 of NW 1/4	40		40	172			27 75				
"			SE 1/4 of NW 1/4	40		40	177			28 56				
Feed Blaise			NE 1/4 of SW 1/4	40		40	202			32 59				
Anderson & Hawkins			NW 1/4 of SW 1/4	40		40	172			27 75				
Weyerhaeuser et al			SW 1/4 of SW 1/4	40		40	166			26 78				
Feed Blaise			SE 1/4 of SW 1/4	40		40	161			25 97				
Immigration Land Co			NE 1/4 of SE 1/4	40		40	172			27 75				
Feed Blaise			NW 1/4 of SE 1/4	40		40	172			27 75				
Anderson & Hawkins			SW 1/4 of SE 1/4	40		40	86			13 87				
Immigration Land Co			SE 1/4 of SE 1/4	40		40	161			25 97				
						640	2710			437 21				

Cass County, Minnesota, for Taxes for the Year 1924

Highway Ditch No.	Ditch No.	Ditch No.	Ditch No.	TOTAL TAXES	PAID	WHEN PAID	No. of Receipt	March Settlement	June Settlement	Penalty	November Settlement	Penalty	Collections to First Monday in January	Penalty	Delinquent on First Monday in January	REMARKS
				2775	2775	1st Half Paid MAY 20 1925	9521V		13 87		13 88					
				3210	3210	2nd Half Paid OCT 12 1925	4746									
				2775	2775	1st Half Paid MAY 20 1925	9393V		21 56		31 29					Done and half 51
				2775	2775	2nd Half Paid OCT 12 1925	4746		13 87		13 88					
				2856	2856	1st Half Paid MAY 20 1925	9522V									
				2856	2856	2nd Half Paid OCT 12 1925	4747		56 72		50 71					
				2775	2775	1st Half Paid MAY 20 1925	9394V									
				2856	2856	2nd Half Paid OCT 12 1925	4748									
				3259	3259	Paid in Fall MAR 30 1925	2878		32 59							
				2775	2775	1st Half Paid MAY 20 1925	9395V		21 56		31 29					
				2678	2678	2nd Half Paid OCT 12 1925	4749		13 39		13 39					
				2597	2597	Paid in Fall MAR 30 1925	2879		25 97							
				2775	2775	1st Half Paid MAY 20 1925	9396V		13 17		13 88					
				2775	2775	2nd Half Paid OCT 12 1925	4750		13 88		13 87					
				1387	1387	1st Half Paid MAY 20 1925	7541		3 47		3 47					
				2597	2597	2nd Half Paid OCT 12 1925	4751		17 3		17 3					
				2597	2597	1st Half Paid MAY 20 1925	4247		12 48		12 99					
				437 21	437 21				246 51		690 69					

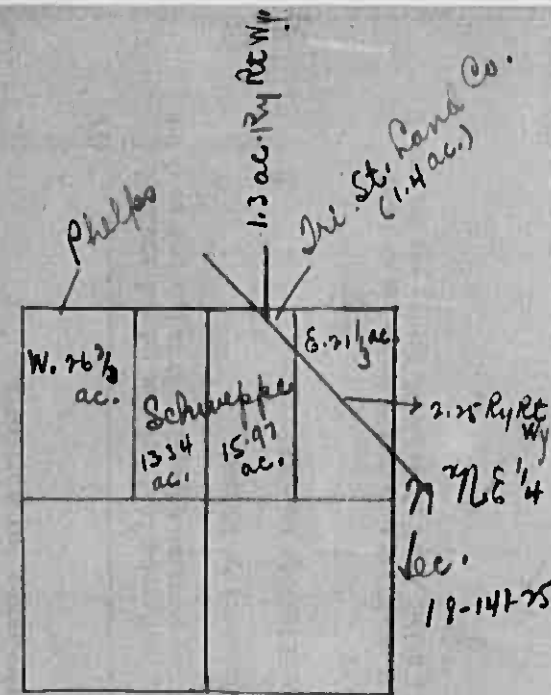
Tax List of Real Property in the Town of Linn of Iowa

IN WHOSE NAME ASSESSED	TO WHOM TRANSFERRED	Sold for Taxes	SUBDIVISION	Sec. or Lot	Town or Block	Rng.	No. of Acres		VALUATION	No. School Dist.	General Taxes	School District	School District	School District	School District		
							Rate	Rate				Rate	Rate				
												Mills	Mills	Mills	Mills		
												\$ cts.	\$ cts.	\$ cts.	\$ cts.		
Fred Blais	Wm Parise		NE 1/4 of NE 1/4	27	48	35	40	288	01			4646					
Jules De Lage			NW 1/4 of NE 1/4				40	315				5084					
Fred Blais			SW 1/4 of NE 1/4				40	182				2936					
	Wm Parise		SE 1/4 of NE 1/4				40	112				2775					
	Bew Brown		NE 1/4 of NW 1/4				40	300				4840					
			NW 1/4 of NW 1/4				39	24				3146					
Dan S. Mart			SW 1/4 of NW 1/4				36	37				2597					
J. B. Elliott			SE 1/4 of NW 1/4				39	29				2775					
			NE 1/4 of SW 1/4				36	57				2388					
			NW 1/4 of SW 1/4				40	350				5647					
Erick Wulberg			SW 1/4 of SW 1/4				40	242				3904					
Immigration Land			SE 1/4 of SW 1/4				40	172				2775					
Fred Blais			NE 1/4 of SE 1/4				40	161				2597					
			NW 1/4 of SE 1/4				39	13				2897					
			SW 1/4 of SE 1/4				36	60				5437					
			SE 1/4 of SE 1/4				39	11				2597					
							626.61	3517					56739				

Cass County, Minnesota, for Taxes for the Year 1924

Highway Ditch No.	Ditch No.	Ditch No.	Ditch No.	TOTAL TAXES	PAID	WHEN PAID	No. of Receipt	March Settlement	June Settlement	Penalty	November Settlement	Penalty	Collection to First Monday in January	Penalty	Delinquent on First Monday in January	REMARKS
				4646	1	2nd Half Paid OCT 26 1925	10217									
				5084	2	1st Half Paid MAY 29 1925	7836		2323				7313			
				2936	3	Paid in Full MAY 11 1925	3685		5082							
				2775	4	2nd Half Paid OCT 31 1925	11878		1468				1468			
					5	1st Half Paid MAY 29 1925	7912									
					6	2nd Half Paid OCT 26 1925	7836		1388				1387			
					7											
				4840	6	Paid in Full FEB 5 1925										
				3146	7	Paid in Full FEB 5 1925	444		7986							
				2597	8											
				2775	9	Paid 7/23/26 by Del. Rec # 20094										
					10	Paid 11/6/26 by Del. Rec # 19737										
				3373	11	Paid subsequent to Cert. No. 12524										
				6090	12	Paid 11/6/26 by Del. Rec # 19738										
					13	Paid subsequent to Cert. No. 12525										
				5217	13	Paid 7/23/26 by Del. Rec # 20104										
				3267	14	2nd Half Paid OCT 12 1925	9572		1634				1633			
					15	1st Half Paid MAY 20 1925	4247									
					16											
				2990	16	2nd Half Paid OCT 31 1925										
				2926	17	1st Half Paid MAY 29 1925	11878									
				5807	18	2nd Half Paid OCT 31 1925	7912		4366				4367			
				2597	19											
					20											
				61064		7986	10261		21178							

Tax List of Real Property in the Town of Prima



TO WHOM TRANSFERRED	Sold for Taxes	SUBDIVISION	Sec. or Lot	Town or Block	No. of Acres	VALUATION	No. School Dist.	General Taxes	School District	School District	School District	School District	
									No. Rate	No. Rate	No. Rate	No. Rate	
						Dollars			cts.	\$	cts.	\$	cts.
		N E 1/4 of N E 1/4	18	111	25	66			2017				
		N W 1/4 of N E 1/4				103			1662				
		S W 1/4 of N E 1/4			40	195			3146				
		S E 1/4 of N E 1/4			40	206			3323				
		Triangular piece of 187 3/4 ac. lying N E of Railway			140	11			177				
		N E 1/4 of N W 1/4			40	214			3152				
		N W 1/4 of N W 1/4 Lot 1			37	67			2759				
		S W 1/4 of N W 1/4 2			37	32			2936				
		S E 1/4 of N W 1/4			40	195			3146				
		N E 1/4 of S W 1/4			40	206			3323				
		N W 1/4 of S W 1/4 Lot 13			37	97			3146				
		S W 1/4 of S W 1/4			38	12			3146				
		S E 1/4 of S W 1/4			40	206			3227				
		N E 1/4 of S E 1/4			40	448			1228				
		N W 1/4 of S E 1/4			40	200			3227				
		S W 1/4 of S E 1/4			40	195			3146				
		S E 1/4 of S E 1/4			40	200			3227				
					630	68			3379				
									545				

W. L. Schnepper
 Henry O. Halverson
 C. E. Faust
 Andrew & Jacques & Whitehouse & Co.
 Henry O. Halverson
 Ole Halverson
 J. A. Schweiger & Wm. Hart

Cass County, Minnesota, for Taxes for the Year 1924

Highway Ditch No.	Ditch No.	Ditch No.	Ditch No.	TOTAL TAXES	PAID	WHEN PAID	No. of Receipt	March Settlement	June Settlement	Penalty	November Settlement	Penalty	Collections to First Monday in January	Penalty	Delinquent on First Monday in January	REMARKS
				2017		PAID in Full	MAY 29 1925	5043		2017						
				1662		PAID in Full	MAY 29 1925	5014		1662						
				3146		1st Half Paid	MAY 6 1925	10860								
				3323		1st Half Paid	MAY 6 1925	3531		3234			3235			
				177		PAID in Full	MAY 29 1925	6389		177						
				3452		PAID in Full	OCT 31 1925	1163					3452	15		
				2759		2nd Half Paid	OCT 31 1925	12470								
				3036		PAID in Full	OCT 31 1925	7118		1518			1518			
				3146		PAID in Full	OCT 31 1925	11632					3146	142		
				2226		PAID in Full	OCT 31 1925	9393					1560	2226	334	
				3323		1st Half Paid	OCT 31 1925	5878		1662			1661			
				3475		2nd Half Paid	OCT 31 1925	17470		1737			1738			
				3638		1st Half Paid	OCT 31 1925	10933		1819			1819			
				3523		1st Half Paid	MAY 29 1925	7522								
						2nd Half Paid	MAY 14 1925	3878		1761			1762			
						PAID in Full	OCT 31 1925									
				1475		1st Half Paid	MAY 6 1925	10860								
				3227		2nd Half Paid	OCT 31 1925	3531		5351			5351			
				3146		1st Half Paid	MAY 6 1925	9292								
				3227		2nd Half Paid	OCT 31 1925	7277		3186			3186			
						PAID in Full	MAY 29 1925									
				1464												
				55978						24124			26869			

NOTICE OF ASSESSMENT AND E
 are hereby notified that your Real and Personal
 assessed at the following amounts for the year 1924:
 Amount of Personal Property,
 Amount of Real Property,
 TOTAL,
 you are also notified, that the Town Board of Equa
 the fourth Monday in June, being the 23rd day

of Real Property in the Town of River

TO WHOM TRANSFERRED	Sold for Taxes	SUBDIVISION	Sec. or Lot	Town or Block	Rng.	No. of Acres		VALUATION	No. School Dist.	General Taxes	School District	School District	School District	School District	
						Rate	Rate				Rate	Rate			
Ida M. Phelps		N-E 1/4 of N-E 1/4	18	141	25	26	66	125	C1.		2017				
S. H. Conkey		N-W 1/4 of N-E 1/4				19	38	103			1662				
Old Halverson		S-W 1/4 of N-E 1/4				40	195				3146				
"		S-E 1/4 of N-E 1/4				40	206				3323				
Jacob B. Yast		N-E 1/4 of N-W 1/4				40	214				3452				
"		N-W 1/4 of N-W 1/4 Lot 1				37	67	171			2759				
C. E. Yast		S-W 1/4 of N-W 1/4 " 2				37	32	152			2936				
Jacob B. Yast		S-E 1/4 of N-W 1/4				40	195				3146				
H. L. Schueppe		N-E 1/4 of S-W 1/4				29	30	138			2226				
Henry O. Halverson		N-W 1/4 of S-W 1/4 Lot 3				37	77	195			3146				
C. E. Yast		S-W 1/4 of S-W 1/4 " 4				38	12	195			3146				
Hudson & Jacques 1/8 Whiteside 7/8		S-E 1/4 of S-W 1/4				40	200				3227				
Henry O. Halverson		N-E 1/4 of S-E 1/4				40	148				7228				
"		N-W 1/4 of S-E 1/4				40	200				3227				
J. A. Schweiger + Wm. Hart		S-W 1/4 of S-E 1/4				40	195				3146				
"		S-E 1/4 of S-E 1/4				40	200				3227				
						630	68	3379			545	14			

Cass County, Minnesota, for Taxes for the Year 1924

Highway Ditch No.	Ditch No.	Ditch No.	Ditch No.	TOTAL TAXES	PAID	WHEN PAID	No. of Receipt	March Settlement	June Settlement	Penalty	November Settlement	Penalty	Collections to First Monday in January	Penalty	Delinquent on First Monday in January	REMARKS
				2017	1	Paid in Full MAY 29 1925	5043		2017							
				1062	2	Paid in Full MAY 29 1925	5044		1662							
				3146	3	1st Half Paid MAY 6 1925	10860									
				3323	4	1st Half Paid MAY 6 1925	3531		3234		3235					
				177	5	1st Half Paid MAY 29 1925	6389		177							
				3452	6	Paid in Full OCT 31 1925	11632				3452	155				
				2759	7	1st Half Paid OCT 31 1925	17470									
				3036	8	1st Half Paid MAY 29 1925	7118		1518		1518					
				3146	9	Paid in Full OCT 31 1925	11632				3146	142				
				2226	10								2560	2226	334	
				3323	11	1st Half Paid OCT 31 1925	9393		1662		1661					
				3475	12	1st Half Paid OCT 31 1925	17470		1737		1738					
				3638	13	1st Half Paid OCT 31 1925	10923		1819		1819					
				3523	14	1st Half Paid OCT 31 1925	9393		1761		1762					
				7475	15	1st Half Paid OCT 31 1925	10860									
				3227	16	1st Half Paid MAY 6 1925	3531		5351		5351					
				3146	17	1st Half Paid MAY 6 1925	8292									
				3227	18	1st Half Paid OCT 31 1925	7277		3186		3187					
					19											
					20											
				559					24124		26869					

Tax List of Real Property in the Town of Lincoln

71931—LOUIS F. DOW CO., ST. PAUL

IN WHOSE NAME ASSESSED	TO WHOM TRANSFERRED	Sold for Taxes	SUBDIVISION	Sec. or Lot	Town or Block	No. of Acres		VALUATION	No. School Dist.	General Taxes	School District	School District	School District	School District
						Rate	Rate				Rate	Rate		
Anderson + Sawlinson			NE 1/4 of NE 1/4	19	25	40	172				2045			
			NW 1/4 of NE 1/4			40	172				2045			
			SW 1/4 of NE 1/4			40	172				2045			
Ben A. Mizen			SE 1/4 of NE 1/4			40	172				2045			
Robert A. Whiteside			NE 1/4 of NW 1/4			40	152				2164			
			NW 1/4 of NW 1/4			38 1/2	172				2045			
			SW 1/4 of NW 1/4			37 9/11	161				1914			
			SE 1/4 of NW 1/4			40	172				2045			
A. E. [unclear]	Minnesota & Ontario Paper Co.		NE 1/4 of SW 1/4			40	161				1914			
Nels Anderson			NW 1/4 of SW 1/4			37 8/11	161				1914			
			SW 1/4 of SW 1/4			37 6/11	161				1914			
A. E. [unclear]	Minnesota & Ontario Paper Co.		SE 1/4 of SW 1/4			40	171				2033			
Ben A. Mizen			NE 1/4 of SE 1/4			40	171				2033			
Anderson + Sawlinson			NW 1/4 of SE 1/4			40	171				2033			
Ben A. Mizen			SW 1/4 of SE 1/4			40	171				2033			
			SE 1/4 of SE 1/4			40	171				2033			
						631.58	2713				32255			

Cass County, Minnesota, for Taxes for the Year 1924

Highway Ditch No.	Ditch No.	Ditch No.	Ditch No.	TOTAL TAXES	PAID	WHEN PAID	No. of Receipt	March Settlement	June Settlement	Penalty	November Settlement	Penalty	Collections to First Monday in January	Penalty	Delinquent on First Monday in January	REMARKS
				1313	3358	1/2 of 1/2 Int Oct 31 1925 14128V			176		2787					
				2045	2045	1st Half Paid MAY 29 1925 7358			1136		1136					
				7641	3686	1st Half Paid MAY 29 1925 7777			880		880					5-11 Bal due on 1/2 of 1/2 Int
				4927	2537	1st Half Paid MAY 29 1925 4982			1268		1269					
				6313	3477	1st Half Paid OCT 31 1925 10933V			1737		1738					
				533	2578	1st Half Paid OCT 31 1925 7522			1289		1289					
				1518	3432	1st Half Paid OCT 31 1925 7522			1716		1716					
				1641	3686	1st Half Paid OCT 31 1925 10733V			4843		1843					
				1641	3555	1st Half Paid OCT 31 1925 6602			1017		955					This amount given on check be- cause of error in 1924 settlement. Bal due on dist. re. 6603 is 19.10.
				1822	3736	1st Half Paid OCT 31 1925 6603			686		955					
				533	2447	1st Half Paid OCT 31 1925 11974V			1016		1017					
				1641	3674	1st Half Paid OCT 31 1925 6603			686		955					
				8109	3142	1st Half Paid OCT 31 1925 10841V			1571		1571					
				1313	8346	1st Half Paid MAY 29 1925 7842			418		418					
				533	2566	1st Half Paid MAY 29 1925 7777			419		419					
				263	2296	1st Half Paid OCT 31 1925 10841V			2431		2431					
				17306	49561	1st Half Paid MAY 29 1925 1982			22713		22278					

Tax List of Real Property in the Town of Lincoln

IN WHOSE NAME ASSESSED	TO WHOM TRANSFERRED	Sold for Taxes	SUBDIVISION	Sec. or Lot	Town or Block	Rng.	No. of Acres		VALUATION	No. School Dist.	General Taxes	School District	School District	School District	School District				
							No. Rate	No. Rate				No. Rate	No. Rate						
												Mills				Mills			
												Rate				Rate			
												Dollars				Dollars			
												\$ cts.				\$ cts.			
Red River Lbr. Co			NE 1/4 of NE 1/4	22	141	25	40		172	100		2045							
Sharpe Bros.			NW 1/4 of NE 1/4				40		114			2045							
Red River Lbr. Co			SW 1/4 of NE 1/4				40		172			2045							
			SE 1/4 of NE 1/4				40		172			2045							
Sharpe Bros			NE 1/4 of NW 1/4				40		172			2045							
L B Walker			NW 1/4 of NW 1/4				40		172			2045							
Sharpe Bros			SW 1/4 of NW 1/4				40		172			2045							
Red River Lbr. Co			SE 1/4 of NW 1/4				40		172			2045							
			NE 1/4 of SW 1/4				40		172			2045							
Sharpe Bros			NW 1/4 of SW 1/4				40		172			2045							
			SW 1/4 of SW 1/4				40		171			2033							
Red River Lbr. Co			SE 1/4 of SW 1/4				40		171			2033							
Pine Tree Mfg Co.			NE 1/4 of SE 1/4				40		138			1641							
Robert B. Whitehead			NW 1/4 of SE 1/4				40		160			1902							
Red River Lbr. Co			SW 1/4 of SE 1/4				40		160			1902							
Cecil R. Fitch			SE 1/4 of SE 1/4				40		125			1486							
							640		2587			307 57							

Cass County, Minnesota, for Taxes for the Year 1924

Highway Ditch No.	Ditch No.	Ditch No.	Ditch No.	TOTAL TAXES	PAID	WHEN PAID	No. of Receipt	March Settlement	June Settlement	Penalty	November Settlement	Penalty	Collections to First Monday in January	Penalty	Delinquent on First Monday in January	REMARKS
				2045	1	2nd Half Paid OCT 31 1925 1768 1/2										
				2045	2	1st Half Paid MAY 29 1925 7883				1022 1/2			1022			
				1355	2	1/2 Sett Paid In Full MAY 14 1925 3845				678 1/2						✓
				2045	3	2nd Half Paid OCT 31 1925 1768 1/2										
				2045	4	1st Half Paid MAY 29 1925 7883				2075 1/2			2045			
					5											
				2045	6	1/2 Sett Paid In Full MAY 14 1925 3845				1073 1/2						✓
				2045	7										23 52	2045 3.07
				2045	8	1st Sett Paid In Full MAY 14 1925 3845				1074 1/2						✓
				2045	9	2nd Half Paid OCT 31 1925 1768 1/2				1023 1/2			1074			✓
					10											
				2045	11	2nd Half Paid OCT 31 1925 1768 1/2				1022 1/2			1073			
				2045	12	1st Sett Paid In Full MAY 14 1925										✓
				2033	13	1st Sett Paid In Full MAY 14 1925 3845				2039 1/2						✓
				2033	14	2nd Half Paid OCT 31 1925 1768 1/2				1016 1/2			1017			
					15											
				1641	16	2nd Half Paid OCT 31 1925 1768 1/2				824 1/2			820			
				902	17	1st Half Paid MAY 29 1925 7802				951 1/2			951			
				1902	18	2nd Half Paid OCT 31 1925 1768 1/2				951 1/2			951			
				1486	19	1st Sett Paid FEB 28 1925 2424 1/2 1486										
					20											
				307 57					1486	136 1/2		8852				

Tax List of Real Property in the Town of Lina

IN WHOSE NAME ASSESSED	TO WHOM TRANSFERED	Sold for Taxes	SUBDIVISION	Sec. or Lot	Town or Block	No. of Acres		VALUATION	No. School Dist.	General Taxes	School District	School District	School District	School District				
						Rate	Rate				Rate	Rate						
											\$	cts.	\$	cts.	\$	cts.	\$	cts.
J. H. Simmons			NE 1/4 of NE 1/4	23	141	25	40	161				1914						
Federal C. Buxton			NW 1/4 of NE 1/4				40	161				1914						
			SW 1/4 of NE 1/4				40	161				1914						
J. H. Simmons			SE 1/4 of NE 1/4				40	161				1914						
Immigration Land Co.			NE 1/4 of NW 1/4				40	172				2045						
			NW 1/4 of NW 1/4				40	172				2045						
			SW 1/4 of NW 1/4				40	172				2045						
			SE 1/4 of NW 1/4				40	172				2045						
B. R. Heerman			NE 1/4 of SW 1/4				40	134				1831						
Nels Anderson			NW 1/4 of SW 1/4				40	139				1641						
B. R. Heerman			SW 1/4 of SW 1/4				40	125				1486						
			SE 1/4 of SW 1/4				40	125				1486						
Lewisberry & Simmons			NE 1/4 of SE 1/4				40	160				1902						
B. R. Heerman			NW 1/4 of SE 1/4				40	160				1902						
Nels Anderson			SW 1/4 of SE 1/4				40	125				1486						
B. R. Heerman			SE 1/4 of SE 1/4				40	125				1486						
								640				2144						

Cass County, Minnesota, for Taxes for the Year 1924

Highway Ditch No.	Ditch No.	Ditch No.	Ditch No.	TOTAL TAXES	PAID	WHEN PAID	No. of Receipt	March Settlement	June Settlement	Penalty	November Settlement	Penalty	Collections to First Monday in January	Penalty	Delinquent on First Monday in January	REMARKS
				1914												
				1914	2	Part Paid MAY 29 1925	5769		702						2201 1914 287	
				1914	3	1st Half Paid MAY 20 1925	4748		957		957				1394 1914 188	
				1914	4	2nd Half Paid OCT 12 1925	4748									
				2045	6	1st Half Paid MAY 20 1925	9573									
				2045	7	2nd Half Paid OCT 12 1925	4748		4090		4090					
				2045	8	1st Half Paid MAY 20 1925										
				2045	9	2nd Half Paid OCT 12 1925										
				6831	11	1st Half Paid MAY 20 1925	11927		915		916					
				1641	12	2nd Half Paid OCT 12 1925	7840		820		821					
				1486	13	1st Half Paid MAY 20 1925	11927		1486		1486					
				1486	14	2nd Half Paid OCT 12 1925	7802									
				2902	16	1st Half Paid MAY 20 1925	11927								2187 1902 285	
				1902	17	2nd Half Paid OCT 12 1925	7802		951		951					
				1486	18	1st Half Paid MAY 20 1925	11927		743		743					
				1486	19	2nd Half Paid OCT 12 1925	7802		742		742					
				29056					11406		10706					

Tax List of Real Property in the Town of Pine

71031—LOUISIANA F. B. CO., ST. LOUIS, MO.

IN WHOSE NAME ASSESSED	TO WHOM TRANSFERRED	Sold for Taxes	SUBDIVISION	Sec. or Lot	Town or Block	No. of Acres		VALUATION	No. School Dist.	General Taxes	School District	School District	School District	School District	
						Rate	Rate				Rate	Rate			
								Dollars			cts.	cts.	cts.	cts.	
B. R. Hesseman			NE 1/4 of NE 1/4	25	141	25	40	154	Unk.			18	31		
			NW 1/4 of NE 1/4				40	138				16	41		
Nels Anderson			SW 1/4 of NE 1/4				40	154				18	31		
B. R. Hesseman			SE 1/4 of NE 1/4				40	164				19	14		
Nels Anderson			NE 1/4 of NW 1/4				40	125				14	86		
			NW 1/4 of NW 1/4				40	125				14	86		
			SW 1/4 of NW 1/4				40	125				14	86		
			SE 1/4 of NW 1/4				40	148				17	60		
Immigration Land Co.			NE 1/4 of SW 1/4				40	161				19	14		
B. R. Hesseman			NW 1/4 of SW 1/4				40	161				19	14		
			SW 1/4 of SW 1/4				40	161				19	14		
Immigration Land Co.			SE 1/4 of SW 1/4				40	161				19	14		
B. R. Hesseman			NE 1/4 of SE 1/4				40	160				19	02		
			NW 1/4 of SE 1/4				40	160				19	02		
			SW 1/4 of SE 1/4				40	160				19	02		
			SE 1/4 of SE 1/4				40	154				18	31		
								640	2408			286	28		

Cass County, Minnesota, for Taxes for the Year 1924

Highway Ditch No.	Ditch No.	Ditch No.	Ditch No.	TOTAL TAXES	PAID	WHEN PAID	No. of Receipt	March Settlement	June Settlement	Penalty	November Settlement	Penalty	Collections to First Monday in January	Penalty	Delinquent on First Monday in January	REMARKS
				18 31		2nd Half Paid OCT 31 1925	11927V									
				16 41		1st Half Paid MAY 1 1925	7802						915			
				18 31		2nd Half Paid OCT 31 1925	11927V						821			
				19 14		1st Half Paid MAY 1 1925	7802						916			
						2nd Half Paid OCT 31 1925	11927V						915			
						1st Half Paid MAY 1 1925	7802						957			
				14 86		2nd Half Paid OCT 31 1925	11927V									
				14 86		1st Half Paid MAY 1 1925	7802									
				14 86		2nd Half Paid OCT 31 1925	11927V									
				17 60		1st Half Paid MAY 1 1925	7802									
						2nd Half Paid OCT 31 1925	11927V									
				19 14		1st Half Paid MAY 20 1925	4748						957			
				19 14		2nd Half Paid OCT 31 1925	11927V									
				19 96		1st Half Paid MAY 1 1925	7802						1955			
				19 14		2nd Half Paid OCT 31 1925	11927V									
						1st Half Paid MAY 20 1925	4748						957			
				19 02		2nd Half Paid OCT 31 1925	11927V									
				39 02		1st Half Paid MAY 1 1925	7802									
				19 02		2nd Half Paid OCT 31 1925	11927V									
				18 31		1st Half Paid MAY 1 1925	7802						3319			
						2nd Half Paid OCT 31 1925	11927V									
				287				287 10					139 06			

Tax List of Real Property in the Town of Lunda of Minnesota

71091-COURT BOOK CO., ST. PAUL

IN WHOSE NAME ASSESSED	TO WHOM TRANSFERRED	Sold for Taxes	SUBDIVISION	Sec. or Lot	Town or Block	No. of Acres		VALUATION	No. School Dist.	General Taxes	School District	School District	School District	School District
						Rate Mills	Rate Mills				Rate Mills	Rate Mills		
Robert B. Whiteside			NE 1/4 of NE 1/4	26	156	25	40	125	1				1486	
			NW 1/4 of NE 1/4											
Harold Anderson			SW 1/4 of NE 1/4				40	149					1771	
			SE 1/4 of NE 1/4				40	139					1653	
Robert B. Whiteside			NE 1/4 of NW 1/4				40	154					1831	
			NW 1/4 of NW 1/4				40	161					1914	
Red River Lbr. Co.			SW 1/4 of NW 1/4				40	166					1974	
			SE 1/4 of NW 1/4				40	166					1974	
Robert B. Whiteside			NE 1/4 of SW 1/4				40	166					1974	
			NW 1/4 of SW 1/4				40	166					1974	
J. B. Walker			SW 1/4 of SW 1/4				40	166					1974	
			SE 1/4 of SW 1/4				40	166					1974	
Ellen Cecelia Wilson			NE 1/4 of SE 1/4				40	154					1831	
Clyde E. Marrow			NW 1/4 of SE 1/4				40	161					1914	
Red River Lbr. Co.			SW 1/4 of SE 1/4				40	161					1914	
			SE 1/4 of SE 1/4				40	161					1914	
						1000		2361					28072	

Cass County, Minnesota, for Taxes for the Year 1924

Highway Ditch No.	Ditch No.	Ditch No.	Ditch No.	TOTAL TAXES	PAID	WHEN PAID	No. of Receipt	March Settlement	June Settlement	Penalty	November Settlement	Penalty	Collections to First Monday in January	Penalty	Delinquent on First Monday in January	REMARKS
				1186		Oct 31 1925	10934									
				1771		MA 2 1925	1523									
				1653												
				1831		Oct 31 1925	10934									
				1914		MA 2 1925	1523									
				1974		Oct 31 1925	17682									
				1974		Oct 31 1925	7863									
				1974												
				1974												
				1974												
				1974												
				1831												
				1914												
				1914												
				2037												
				28195												

2270 1974 2.96

1974

2201 1914 2.87

2331 1914 2.87 1.23=1.30

4590 4589

Tax List of Real Property in the Town of Lucas of Lucas

71031—LOUIS K. BOWEN, ST. PAUL

IN WHOSE NAME ASSESSED	TO WHOM TRANSFERRED	Sold for Taxes	SUBDIVISION	No. of Acres		VALUATION	No. School Dist.	General Taxes	School District	School District	School District	School District
				Sec. or Lot	Town or Block				Rate	Rate	Rate	Rate
						Dollars			\$ cts.	\$ cts.	\$ cts.	\$ cts.
<i>J. M. Auld</i>			NE 1/4 of NE 1/4	27	140.25	40			172			2045
<i>Joseph Duggan</i>			NW 1/4 of NE 1/4			40			171			1914
			SW 1/4 of NE 1/4			40			172			2045
<i>Immigration Land Co.</i>			SE 1/4 of NE 1/4			40			172			2045
<i>B. R. Heeseman</i>			NE 1/4 of NW 1/4			40			172			2042
			NW 1/4 of NW 1/4			37.70			154			1831
			SW 1/4 of NW 1/4			38			154			1831
<i>Immigration Land Co.</i>			SE 1/4 of NW 1/4			37.70			154			1831
<i>Joseph Fishback</i>			NE 1/4 of SW 1/4			38			154			1831
			NW 1/4 of SW 1/4			40			171			2033
			SW 1/4 of SW 1/4			40			171			2033
<i>J. W. Franklin</i>			SE 1/4 of SW 1/4			40			171			2033
<i>Immigration Land Co.</i>			NE 1/4 of SE 1/4			40			171			2033
<i>Joseph Fishback</i>			NW 1/4 of SE 1/4			37.70			154			1831
<i>J. W. Franklin</i>			SW 1/4 of SE 1/4			38.32			154			1831
<i>Nicholas P. Nelson</i>			SE 1/4 of SE 1/4			37.01			149			1771
						22413			2606			30980

Cass County, Minnesota, for Taxes for the Year 1924

Highway Ditch No.	Ditch No.	Ditch No.	Ditch No.	TOTAL TAXES	PAID	WHEN PAID	No. of Receipt	March Settlement	June Settlement	Penalty	November Settlement	Penalty	Collections to First Monday in January	Penalty	Delinquent on First Monday in January	REMARKS		
																	\$	cts.
				\$	cts.	Month	Day	Year	\$	cts.	\$	cts.	\$	cts.	\$	cts.	\$	cts.
				2045	3													
				1914	2	Paid in Full	MAY 20 1925											
				2045	3	Paid in Full	MAY 29 1925			5454			3959					
				2045	4	1st Half Paid	MAY 20 1925			7248			1073		1022			
					5													
				2042	6	2nd Half Paid	OCT 12 1925			7523			1021		1028			
				1831	7	1st Half Paid	MAY 20 1925			4748								
				1831	8	2nd Half Paid	OCT 11 1925			1178								
				1831	9	1st Half Paid	OCT 31 1925			7803			1831		1831			
				1831	10	2nd Half Paid	MAY 20 1925			9523			915		916			
				1831	11	1st Half Paid	MAY 20 1925			4748								
				2033	12	2nd Half Paid	OCT 31 1925			11291								
				2033	13	1st Half Paid	MAY 29 1925			6040			2449					
				2033	14	Paid in Full	FEB 21 1925			1126								
					15													
				2033	16	2nd Half Paid	OCT 12 1925			9523			1017		1016			
				1831	17	1st Half Paid	MAY 20 1925			4748								
				1831	18	2nd Half Paid	OCT 31 1925			11291			915		916			
				1771	19	Paid in Full	FEB 21 1925			1126								
					20	2nd Half Paid	DEC 28 1925			12899								
						1st Half Paid	FEB 28 1925			2524								
				30980						4750			13630		9670			

Tax List of Real Property in the Town of Prima

71031—LOUIS RABOW CO., ST. PAUL

IN WHOSE NAME ASSESSED	TO WHOM TRANSFERRED	Sold for Taxes	SUBDIVISION	Sec. or Lot	Town or Block	No. of Acres		VALUATION	No. School Dist.	General Taxes	School District	School District	School District	School District
						Rate Mills	Rate Mills				Rate Mills	Rate Mills		
W. A. Spruice Jr. & Co.			NE 1/4 of NE 1/4	32	141 33	40	16.6	1974						
Wm. Leibert			NW 1/4 of NE 1/4			40	16.6	1974						
A. J. Auld + Cecile Auld			SW 1/4 of NE 1/4			40	16.6	1974						
"			SE 1/4 of NE 1/4			40	16.6	1974						
Robert B. Whitende			NE 1/4 of NW 1/4			40	16.6	1974						
"			NW 1/4 of NW 1/4			40	18.3	2176						
"			SW 1/4 of NW 1/4			40	16.6	1974						
S. A. Dodd			SE 1/4 of NW 1/4			40	16.6	1974						
"			NE 1/4 of SW 1/4			40	16.6	1974						
"			NW 1/4 of SW 1/4			40	16.6	1974						
"			SW 1/4 of SW 1/4			40	16.6	1974						
"			SE 1/4 of SW 1/4			40	16.6	1974						
A. J. Auld + Cecile Auld			NE 1/4 of SE 1/4			40	16.6	1974						
"			NW 1/4 of SE 1/4			40	16.6	1974						
"			SW 1/4 of SE 1/4			40	16.6	1974						
"			SE 1/4 of SE 1/4			40	16.6	1974						
						640	2673				31786			

Cass County, Minnesota, for Taxes for the Year 1924

Highway Ditch No.	Ditch No.	Ditch No.	Ditch No.	TOTAL TAXES	PAID	WHEN PAID	No. of Receipt	March Settlement	June Settlement	Penalty	November Settlement	Penalty	Collections to First Monday in January	Penalty	Delinquent on First Monday in January	REMARKS
821				2795	1											
851				2795	2											
				1974	3											
879				2303	4											
					5											
9148				5122	6										3483 1974 2.96 = 11.48 = 12.13	
1313				3489	7										3890 2176 3.26 = 13.13 = 13.88	
1034				3008	8										3363 1974 2.96 = 10.34 = 10.93	
461				2385	9											
					10											
				4974	11											
				1974	12											
				4974	13											
				1974	14											
					15											
				1974	16											
				1974	17											
				1974	18											
				1974	19											
					20											
				5877												
				37663												

2nd Half Paid AUG 29 1925
 1st Half Paid MAY 25 1925

903 ✓
 4445

6000 ✓

4281

~~Due 2nd half 1925~~

6000 4281

