

1912
HIRAM

INDEX TO SECTIONS

SECTION	PAGE
Section 1	
" 2	
" 3	
" 4	
" 5	
" 6	
" 7	
" 8	
" 9	
" 10	
" 11	
" 12	
" 13	
" 14	
" 15	
" 16	
" 17	
" 18	
" 19	
" 20	
" 21	
" 22	
" 23	
" 24	
" 25	
" 26	
" 27	
" 28	
" 29	
" 30	
" 31	
" 32	
" 33	
" 34	
" 35	
" 36	

For Convenience of Auditor in Showing Boundaries of School Districts

Township No. 140 Range No. 31 Mer. P. M.

1	2	3	4	5	6
7	8	9	10	11	12
13	14	15	16	17	18
19	20	21	22	23	24
25	26	27	28	29	30
31	32	33	34	35	36

SUMMARY OF TAX COLLECTION

Original Levy	- - - - -	\$
Additions	- - - - -	\$
Abatements	- - - - -	\$
		\$
COLLECTIONS			
March Settlement	- - - - -	\$
June Settlement	- - - - -	\$
November Settlement	- - - - -	\$
January Settlement	- - - - -	\$
		\$
Over Collected	- - - - -	\$
Under Collected	- - - - -	\$
Delinquent	- - - - -	\$
Total	- - - - -	\$

Treasurer's Office, Cass County, Minnesota

RECEIVED this, the first Monday (being the fourth day) of January, A. D. 1943, of L. C. Peterson, Auditor of said County, Minnesota, the Tax List of all Taxable Real and Personal Property in the Township of Hiram in said County for the year A. D. 1942, as specified above and amounting to Six thousand one hundred nineteen & 26/100 Dollars.
W. J. MacKeown
County Treasurer.

December 31 1942

Office of County Treasurer, Cass County, Minnesota

To L. C. Peterson, County Auditor:
Sir:—I herewith return to you the Tax List for the Township of Hiram in said County for the year 1942, heretofore received from you. I certify that I have compared the same with the duplicate receipts in your office, and have written opposite the amount of each tax so receipted the words "First Quarter Paid", "Second Quarter Paid", "Third Quarter Paid" or "Paid in full" as the case may be, and the number of my receipt given in discharge of said tax, and each tract or lot of real property against which the taxes remain unpaid is delinquent for said year.
Yours respectfully,
W. J. MacKeown
County Treasurer.

Auditor's Office, Cass County, Minnesota

I, _____ Auditor of said County, and State of Minnesota, do hereby certify that the following is a correct list of the Taxes levied on the Real and Personal Property in the _____ of _____ for the year 1942.
WITNESS my hand and official seal, the _____ day of _____ 1943.
(SEAL) _____ County Auditor.

Auditor's Office, Cass County, Minnesota

I hereby certify that on the first Monday in January 1944, I received of _____ 194_____, County Treasurer, the Tax List of the _____ of _____ in said County for the year 1942 that I have compared the said list with the Statements receipted for by said Treasurer, which are on file in my office, and that each tract or lot of real property therein against which the taxes, or any part thereof, remains unpaid are delinquent for said year.
(SEAL) _____ County Auditor.

COLLECTIONS OF TAXES OF 1942, Township OF Huron, CASS COUNTY, MINNESOTA

FUNDS	MARCH SETTLEMENT 19. 43	JUNE SETTLEMENT 19. 43	NOV. SETTLEMENT 19. 43	Amount Collected from Nov. 19. 43 to First Monday in Jan. 19. 44	REDUCTIONS	Cancelled + Forfeited	Total Reductions and Collected	BALANCE UNCOLLECTED	ADDITIONS	Taxes Over paid	Total Uncollected to First Monday in January, 19.
State Revenue.											
State School.											
Teachers Insurance.											
State Debt--Non-Homestead.	3163	10658	2877	876							
State Debt--Homestead.	807	3077	894	246							
County Revenue.	13640	51986	15094	4133							
County Road and Bridge.	2071	7893	2282	628							
County Welfare.	16525	63167	18344	5822							
County Bond and Interest.	8275	31536	9158	2507							
Town Revenue.	2508	4456	2475	760							
Town Road and Bridge.	6670	25420	7382	2021							
Town Drag.	502	1911	555	152							
Town State Loan.											
School Local 1 Mill.	502	1911	556	152							
School Special.	12331	41360	12055	2468							
School State Loan.	2357	8983	2609	714							
Defic. Cap. Outlay	10030	38225	11100	3039							
	4012	15290	4440	1216							
Total	83442	310973									
Money and Credits.	902										
	84344	310973	90184	23934	20062	4324				7139	85293

	SCHOOL DISTRICT NO.	LOCAL 1 MILL	SPECIAL	STATE LOAN	Deficiency	Cap. Outlay	TOTALS
MARCH SETTLEMENT	School District No. <u>Un</u>	502	12331	2357	10030	4012	89232
	Totals						
JUNE SETTLEMENT	School District No. <u>Un.</u>	1911	41360	8983	38225	15290	105769
	Totals	1911	41360	8983	38225	15290	105769
NOVEMBER SETTLEMENT	School District No. <u>Un..</u>	556	12055	2609	11100	4440	30760
	Totals	556	12055	2609	11100	4440	30760
NOVEMBER to JANUARY	School District No. <u>Un</u>	152	2468	714	3039	1216	7589
	Totals	152	2468	714	3039	1216	7589
ADDITIONS	School District No.						
	Totals						
REDUCTIONS	School District No.						
	Totals						

Table with columns for property owner, recipient, subdivision, valuation, taxes, and payment status. Includes handwritten entries for John Lundblad, George Bowman, John Lundblad, Alvie Thompson, Ole B. Borchert, Ralph Plantz, Mathilda Blakeman, and Genev S. Thomas. Includes a large handwritten note at the bottom left describing a portion of Lot 3.

That part of Lot 3 B2-140-31 described as follows: Beginning at a point 23 rods N. + 14 rods S. of the N.W. corner of said Lot 3, thence running S. 14 rods, thence E. to Ten Mile Lake, thence N. following the lake shore to a point where the land reaches the lake 1/4 mile S. of N. line of said Lot 3, thence N. to place of beginning.

Tax List of Real Property in the Town of Hiram

Cass County, Minnesota, for Taxes for the Year 1942

IN WHOSE NAME ASSESSED	TO WHOM TRANSFERRED	SUB-DIVISION	Sec or Lot	Town or Block	NO. OF ACRES		No. of School District	VALUATION BY SCHOOL DISTRICTS					SOLD FOR TAXES
					District No. <i>11</i>	District No.		District No.	District No.	District No.	District Rate <i>150.48 Mills</i>	District Rate	
		NE 1/4 of NE 1/4			11 140 31								
		NW 1/4 of NE 1/4											
		SW 1/4 of NE 1/4											
		SE 1/4 of NE 1/4											
<i>Robert H. & Mabel Mayer</i>	<i>Part of Lot 3 - formerly Lots 58 & 78 - Shady Shore</i>					<i>650</i>		<i>9</i>					
		NE 1/4 of NW 1/4											
		NW 1/4 of NW 1/4											
		SW 1/4 of NW 1/4											
		SE 1/4 of NW 1/4											
<i>Clara J. Moore</i>	<i>Lot 3 in Shady Shore & into Patch</i>					<i>890</i>		<i>20</i>					
		NE 1/4 of SW 1/4											
		NW 1/4 of SW 1/4											
<i>Louise L. Jaeger & Helen Hill</i>	<i>SW 1/4 of SW 1/4 Lot 4</i>					<i>36</i>		<i>288</i>		<i>Abate # 1825</i>			
		SE 1/4 of SW 1/4						<i>7.760</i>					
<i>E. S. Magdanz & F. H. Luedtke</i>	<i>Part of Lot 1 - 300' on lake</i>					<i>1</i>		<i>5</i>					
		NE 1/4 of SE 1/4											
		NW 1/4 of SE 1/4											
		SW 1/4 of SE 1/4 Lot 2											
<i>The L. M. Company</i>		SE 1/4 of SE 1/4				<i>40</i>		<i>116</i>			SOLD FOR TAXES		
						<i>72 40</i>		<i>914</i>		<i>621 NW</i>			
								<i>630</i>					

Rate and Tax Less Homestead Exemption	State Tax on Non-Homestead	TOTAL GENERAL TAXES	SPECIAL ASSESSMENTS					TOTAL TAXES	PAID	WHEN PAID	Number of Receipt	March Settlement 1943	June Settlement 1943	Penalty 1943	November Settlement 1943	Penalty 1943	Collections to First Monday in January 1944	Penalty 1944	Delinquent on First Monday in January 1944	Total Delinquent Tax and Penalty	REMARKS	
			\$	cts.	\$	cts.	\$															cts.
<i>136</i>								<i>136</i>														
<i>136</i>								<i>136</i>														
<i>300</i>	<i>14</i>							<i>314</i>														
	<i>18</i>							<i>318</i>														
<i>4334</i>	<i>357</i>							<i>4334</i>														
<i>7224</i>	<i>432</i>							<i>7224</i>														
<i>76</i>	<i>04</i>							<i>80</i>														
<i>1746</i>	<i>36</i>							<i>1830</i>														
	<i>104</i>							<i>1850</i>														
<i>9482</i>	<i>558</i>							<i>10040</i>														
	<i>458</i>							<i>9940</i>														

The L. M. Company

Robert H. & Mabel Mayer

Clara J. Moore

Louise L. Jaeger & Helen Hill

E. S. Magdanz & F. H. Luedtke

JUL 6 1943

NOV 10 1943

JUN 17 1943

808 88

1832

1912

32.44

32.44 A

32.44 NW

Tax List of Real Property in the Town of Hiram

Cass County, Minnesota, for Taxes for the Year 1942

Table with multiple columns: IN WHOSE NAME ASSESSED, TO WHOM TRANSFERRED, SUB-DIVISION, VALUATION BY SCHOOL DISTRICTS, Ratio and Tax, State Tax on, SPECIAL ASSESSMENTS, TOTAL TAXES, PAID, WHEN PAID, and REMARKS. Includes handwritten entries for Edna M. Parker, A. C. Bennett, and others, with detailed tax calculations and payment dates.

Table with columns: IN WHOSE NAME ASSESSED, TO WHOM TRANSFERRED, SUB-DIVISION, No. of School District, VALUATION BY SCHOOL DISTRICTS, Rate and Tax Less Homestead Exemption, State Tax on Non-Homestead, TOTAL GENERAL TAXES, SPECIAL ASSESSMENTS, TOTAL TAXES, PAID, WHEN PAID, Number of Receipt, March Settlement 1943, June Settlement 1943, November Settlement 1943, Collections to First Monday in January 1944, Delinquent on First Monday in January 1944, Total Delinquent Tax and Penalty, REMARKS.

Tax List of Real Property in the Town of Hiram

IN WHOSE NAME ASSESSED	TO WHOM TRANSFERRED	SUB-DIVISION	Sec. or Lot	Town or Block	Range	NO. OF ACRES		No. of School District	VALUATION BY SCHOOL DISTRICTS					SOLD FOR TAXES
						District No.	District No.		District No.	District No.	District No.	District No.	District No.	
State of Minnesota		NE 1/4 of NE 1/4												
State of Minnesota		NW 1/4 of NE 1/4												
State of Minnesota - Dept. Rur. Gr.	Byron Selnes	SW 1/4 of NE 1/4												
State of Minnesota		SE 1/4 of NE 1/4												
State of Minnesota - Dept. Rur. Gr.	Byron Selnes	NE 1/4 of NW 1/4												
Chas. H. Wood & Belle Wood		NW 1/4 of NW 1/4				40			87					
"		SW 1/4 of NW 1/4				40			87					
State of Minnesota - Dept. Rur. Gr.	Byron Selnes	SE 1/4 of NW 1/4												
Jerry & Amelia Kramer		NE 1/4 of SW 1/4				40			61					
"		NW 1/4 of SW 1/4				40			61					
"		SW 1/4 of SW 1/4				40			61					
State of Minnesota		SE 1/4 of SW 1/4												
State of Minnesota		NE 1/4 of SE 1/4												
State of Minnesota - Dept. Rur. Gr.	Byron Selnes	NW 1/4 of SE 1/4												
State of Minnesota		SW 1/4 of SE 1/4												
State of Minnesota		SE 1/4 of SE 1/4												

Cass County, Minnesota, for Taxes for the Year 1942

Rate and Tax Less Homestead Exemption	State Tax on Homestead	TOTAL GENERAL TAXES	SPECIAL ASSESSMENTS					TOTAL TAXES	PAID	WHEN PAID	Number of Receipts	March Settlement 1943	June Settlement 1943	Penalty	November Settlement 1943	Penalty	Collections to First Monday in January 1944	Penalty	Delinquent on First Monday in January 1944	Total Delinquent Tax and Penalty	REMARKS
			\$	cts.	\$	cts.	\$														

200
183 1/4
174 1/4
257

5374 156
128
5530
5502

2948

PAID IN FULL MAY 26 1943
PAID IN FULL MAY 26 1943
PAID IN FULL MAY 26 1943

2754

1374 1511
1274 87511

IN WHOSE NAME ASSESSED	TO WHOM TRANSFERRED	SUB-DIVISION	Sec. or Lot	Town or Block	Range	NO. OF ACRES		No. of School District	VALUATION BY SCHOOL DISTRICTS					SOLD FOR TAXES	Rate and Tax Less Homestead Exemption Mills	State Tax on Non-Homestead Mills	TOTAL GENERAL TAXES	SPECIAL ASSESSMENTS								TOTAL TAXES	PAID	WHEN PAID	Number of Receipt	March Settlement 1943	June Settlement 1943	Penalty	November Settlement 1943	Penalty	Collections to First Monday in January 1944	Penalty	Delinquent on First Monday in January 1944	Total Delinquent Tax and Penalty	REMARKS							
						Acres	100m		District No. 1	District No. 2	District No. 3	District No. 4	District Rate					District Rate	District Rate	District Rate	District Rate	District Rate																								
						Dollars	Dollars		Dollars	Dollars	Dollars	Dollars	Dollars					Dollars	Dollars	Dollars	Dollars	Dollars																								
Aldrich Johnson		NE 1/4 of NE 1/4				22 1/4	31 1/4										1820							1820	1	2nd Half Paid NOV 13 1943 1176																				
Arne Carlson		NW 1/4 of NE 1/4					40										2157							2157	2	1st Half Paid JUN 18 1943 1075																				
"		E 1/2 of SW 1/4 of NE 1/4					20										526							526	3	2nd Half Paid OCT 25 1943 628																				
Aldrich Johnson		SE 1/4 of NE 1/4					40										1054							1054	4	1st Half Paid JUN 18 1943 625																				
State of Minnesota		W 1/2 of SW 1/4 of NW 1/4																																												
State of Minnesota		NE 1/4 of NW 1/4																																												
State of Minnesota		NW 1/4 of NW 1/4																																												
State of Minnesota		SW 1/4 of NW 1/4																																												
State of Minnesota		SE 1/4 of NW 1/4																																												
State of Minnesota		NE 1/4 of SW 1/4																																												
State of Minnesota		NW 1/4 of SW 1/4																																												
State of Minnesota		SW 1/4 of SW 1/4																																												
State of Minnesota		SE 1/4 of SW 1/4																																												
State of Minnesota - Dept. Rur. Cr.		NE 1/4 of SE 1/4																																												
A. J. Petrie	State of Minnesota	NW 1/4 of SE 1/4					40																																							
State of Minnesota		SW 1/4 of SE 1/4																																												
State of Minnesota - Dept. Rur. Cr.		SE 1/4 of SE 1/4																																												
							180											369 1/2																												

5557

5557

Tax List of Real Property in the Town of Hiram

Cass County, Minnesota, for Taxes for the Year 1942

IN WHOSE NAME ASSESSED		TO WHOM TRANSFERRED	SUB-DIVISION	Sec. or Lot	Town or Block	Range	NO. OF ACRES Acres 100s	No. of School District	VALUATION BY SCHOOL DISTRICTS					SOLD FOR TAXES	Rate and Tax Less Homestead Exemption Mills	State Tax on Non-Homestead Homestead 7.39 Mills	TOTAL GENERAL TAXES	SPECIAL ASSESSMENTS				TOTAL TAXES	PAID	WHEN PAID	Number of Receipt	March Settlement 1942	June Settlement 1942	November Settlement 1942	Penalty	Collections to First Monday in January 1941	Penalty	Delinquent on First Monday in January 1941	Total Delinquent Tax and Penalty	REMARKS		
									District No. <i>h</i>	District No.	District No.	District No.	District No.					Dollars	Dollars	Dollars	Dollars														Dollars	
									RateMills	RateMills	RateMills	RateMills	RateMills																							
State of Minnesota	1		NE 1/4 of NE 1/4																																	
State of Minnesota	2		NW 1/4 of NE 1/4																																	
State of Minnesota	3		SW 1/4 of NE 1/4																																	
State of Minnesota	4		SE 1/4 of NE 1/4																																	
State of Minnesota	5																																			
State of Minnesota	6		NE 1/4 of NW 1/4																																	
State of Minnesota	7		NW 1/4 of NW 1/4																																	
State of Minnesota	8		SW 1/4 of NW 1/4																																	
State of Minnesota	9		SE 1/4 of NW 1/4																																	
	10																																			
<i>Magnus M. Graff</i>	11	State of Minnesota	NE 1/4 of SW 1/4				40			73			SOLD FOR TAXES	1098	<i>54</i>																					
	12	State of Minnesota	NW 1/4 of SW 1/4				40			73			SOLD FOR TAXES	1098	<i>54</i>																					
State of Minnesota	13		SW 1/4 of SW 1/4																																	
<i>Magnus M. Graff</i>	14	State of Minnesota	SE 1/4 of SW 1/4				40			73			SOLD FOR TAXES	1098	<i>54</i>																					
	15																																			
State of Minnesota	16		NE 1/4 of SE 1/4																																	
State of Minnesota	17		NW 1/4 of SE 1/4																																	
State of Minnesota	18		SW 1/4 of SE 1/4																																	
State of Minnesota	19		SE 1/4 of SE 1/4 11.67 acs. of SE 1/4 SE 1/4																																	
<i>David S. Burke</i>	20		28.33 acs. of SE 1/4 SE 1/4				28.33			62			SOLD FOR TAXES	934	<i>44</i>																					
			<i>Total Acreage</i>				<i>148.33</i>			<i>281 N 1/4</i>				<i>4228</i>	<i>208</i>																					
							<i>Grand Total</i>			<i>15586</i>				<i>339958</i>	<i>1115</i>																					
										<i>21925</i>																										

Inf to State

1152 } case
1152 } case

34.56 case

Tax List of Real Property in the Town of Hiram

Cass County, Minnesota, for Taxes for the Year 1942

IN WHOSE NAME ASSESSED	TO WHOM TRANSFERRED	SUB-DIVISION	Sec. or Lot	Town or Block	Range	NO. OF ACRES Acres 100s	No. of School District	VALUATION BY SCHOOL DISTRICTS				SOLD FOR TAXES	Rate and Tax Loss Homestead Exemption	State Tax on Non-Homestead	TOTAL GENERAL TAXES	SPECIAL ASSESSMENTS				TOTAL TAXES	PAID	WHEN PAID	Number of Receipt	March Settlement 1943	June Settlement 1943	Penalty	November Settlement 1943	Penalty	Collections to First Monday in January 1944	Penalty	Delinquent on First Monday in January 1944	Total Delinquent Tax and Penalty	REMARKS	
								VALUATION	District No.	District No.	District No.					District No.	Rate	Rate	Rate															Rate
								Dollars	No.	No.	No.					No.	Mills	Mills	Mills															Mills
								Dollars																										
M. B. Lathrop & Lou Mae Lathrop		Long Beach	1	2					20	Abate #1815		330	174	348	174	348	1	PAID IN FULL	SEP 4	1943											\$ 1.70 abated			
"	"		2	2					20	" #1815		330	174	348	174	348	2	PAID IN FULL	SEP 4	1943											\$ 1.70 "			
"	"		3	3					20	" #1815		330	174	348	174	348	3	PAID IN FULL	SEP 4	1943											\$ 1.70 "			
"	"		4	4					20	" #1815		330	174	348	174	348	4	PAID IN FULL	SEP 4	1943											\$ 1.70 "			
"	"		5	5					20	" #1815		330	174	348	174	348	5	PAID IN FULL	SEP 4	1943											\$ 1.70 "			
"	"		6	6					20	" #1815		330	174	348	174	348	6	PAID IN FULL	SEP 4	1943											\$ 1.70 "			
"	"		7	7					20	" #1815		330	174	348	174	348	7	PAID IN FULL	SEP 4	1943	9627				1740					\$ 1.70 "				
"	"		8	8					20	" #1815		330	174	348	174	348	8	PAID IN FULL	SEP 4	1943										\$ 1.70 "				
"	"		9	9					20	" #1815		330	174	348	174	348	9	PAID IN FULL	SEP 4	1943										\$ 1.70 "				
"	"		10	10					20	" #1815		330	174	348	174	348	10	PAID IN FULL	SEP 4	1943										\$ 1.70 "				
Mason B. Lathrop			11	11					20	Abate #1815		330	174	348	3112	3480	11	PAID IN FULL	SEP 4	1943	9626				3112					\$ 7.78 abated				
"			12	12					20	Abate #1815		330	174	348	174	348	12	PAID IN FULL	SEP 4	1943	9627				1740					\$ 1.70 "				
Ivar G. Sigveland			13	13					140			2316	2420	348	348	13	PAID IN FULL	MAY 22	1943				2764											
"			14	14					20			330	348	348	348	14	PAID IN FULL	MAY 22	1943	4477														
M. Logeland			15	15					20			330	348	348	348	15	PAID IN FULL	JUN 17	1943															
"			16	16					249			4120	4304	348	348	16	PAID IN FULL	JUN 17	1943	6256				4822										
"			17	17	1/2				10			166	176	176	176	17	PAID IN FULL	JUN 17	1943															
Julia S. Gamble			18	18	1/2				7			116	116	116	116	18	PAID IN FULL	APR 29	1943															
"			19	19					283			4684	4684	4684	4684	19	PAID IN FULL	APR 29	1943	3924				5016										
"			20	20					13			216	216	216	216	20	PAID IN FULL	APR 29	1943															
W. H. Weirich		205' X 300' of	20	20					345			5710	5964	5964	5964	20	PAID IN FULL	JUN 18	1943	6301				5964							\$ 8.30 abated			
Harry Strueland		60' X 300' of	20	20					228	303 ft	Abate #1815	228	228	228	228	20	PAID IN FULL	SEP 8	1943	9657						8112					\$ 34.28 abated			

Tax List of Real Property in the Town of Hiram

Cass County, Minnesota, for Taxes for the Year 1942

IN WHOSE NAME ASSESSED	TO WHOM TRANSFERRED	SUB-DIVISION	Sec. or Lot	Town or Block	Range	NO. OF ACRES Acres 100s	No. of School District	VALUATION BY SCHOOL DISTRICTS				SOLD FOR TAXES	Rate and Tax Less Homestead Exemption - Mills	State Tax on Non-Homestead - Mills	TOTAL GENERAL TAXES	SPECIAL ASSESSMENTS					TOTAL TAXES	PAID	WHEN PAID Month Day Year	Number of Receipt	March Settlement 1943	June Settlement 1943	Penalty	November Settlement 1943	Penalty	Collections to First Monday in January 1944	Penalty	Delinquent on First Monday in January 1944	Total Delinquent Tax and Penalty	REMARKS				
								District No. 1000	District No. Rate Mills	District No. Rate Mills	District No. Rate Mills					District No. Rate Mills	Dollars	Dollars	Dollars	Dollars															Dollars	Dollars	Dollars	Dollars
		Shady Shore																																				
Harriet Stange		Lot of	21					10					166	08																								
Florence N. Walls		W 1/4 of 21 + all of	22					122					2018	90																								
Alice Pearson Fahr			23					20					330	18																								
"			24					140					2316	126																								
"			25					20					330	18																								
Louise L. Jaeger + Helen Hall			26					14					237	12																								
Paul F. H. Purwin			27					136					2250	127																								
L. E. Roberts			28					20					330	18																								
Peter B. + Alice V. Rasmussen			29					20					330	18																								
"			30					20					330	18																								
"			31					20					330	18																								
"			32					137					2268	124																								
"			33					20					330	18																								
"			34					102					1688	124																								
"		Arthur + Myrtle + Betty	35					102					1688	124																								
"		"	36					20					330	18																								
Chas. H. Estrand		"	37					108					1788	88																								
L. J. Burns			38					20					330	18																								
Geo. J. + Lydia L. Sandry			39					105					1738	88																								
Pete Larson + Mary Larson			40					20					330	18																								
								1094 N.H.						18094		98							19080															
														802							18896																	

Fragment of Lot 19, White Pine P.

White Pine Beach

White Pine Beach

White Pine Beach

IN WHOSE NAME ASSESSED	TO WHOM TRANSFERRED	SUB-DIVISION	Sec. or Lot	Town or Block	Range	NO. OF ACRES Acres 100s	No. of School District	VALUATION BY SCHOOL DISTRICTS				SOLD FOR TAXES	Rate and Tax Less Homestead Exemption Mills	State Tax on Non-Homestead Mills	TOTAL GENERAL TAXES	SPECIAL ASSESSMENTS						TOTAL TAXES	PAID	WHEN PAID	Number of Receipts	March Settlement 1943	June Settlement 1943	November Settlement 1943	Penalty	Collections to First Monday in January 1944	Delinquent on First Monday in January 1944	Total Delinquent Tax and Penalty	REMARKS							
								District No. Rate Mills	District No. Rate Mills	District No. Rate Mills	District No. Rate Mills					Dollars	Dollars	Dollars	Dollars	Dollars	Dollars													Dollars	Dollars	Dollars	Dollars	Dollars	Dollars	Dollars
<i>A. F. Juanita C. Kelander</i>	<i>Mrs. A. B. Hertzman</i>	<i>White Pine Beach</i>																																						
		<i>Part of Lot 2-812-140-31</i>																																						
			1						10					166	08																									
<i>Mrs. Julius Aasen</i>			2						20					330	14																									
<i>Katherine J. Hartzell</i>			3						20					330	14																									
<i>P. P. Johnson</i>	<i>Katherine J. Hartzell</i>		4						20					330	14																									
			5						20					330	14																									
			6						20					330	14																									
<i>Katherine J. Hartzell</i>			7						329					5444	240																									
			8						20					330	14																									
			9						20					330	14																									
<i>John A. Mull</i>			10						149					2466	110																									
			11						20					330	14																									
<i>Mabel Sigveland</i>	<i>Margaret M. & Jean de Mull</i>		12						103					1704	93																									
<i>Rose G. Sigveland</i>	<i>Helmer M. & Louise de-Hass Johnson.</i>		13						117					1936	86																									
<i>H. B. Johnson</i>	<i>Maude M. Berry</i>		14						20					330	14																									
<i>Betty Johnson</i>	<i>Mrs. Maude M. Berry</i>		15						20					330	14																									
<i>J. P. Johnson</i>			16						89					1497	66																									
<i>Mrs. Maude Berry</i>			17						20					330	14																									
<i>Claude & Margaret Sheldon</i>			18						57					944	52																									
			19																																					
		<i>See Lot 19 see Rearrangement of Lot 11 - Page 12</i>	20																																					
		<i>Helmer M. Johnson & Louise de-Hass Johnson, No. 25 ft</i>																																						
									1074 N. W.																															
															17762	968																								

Long Beach

Shady Shore

White Pine Beach

Rearrangement of Lot 19, White Pine B.

Hiram

Ritewood Beach

Sea Wall

Tax List of Real Property in the Town of Hiram

Cass County, Minnesota, for Taxes for the Year 1942

Long Beach
Shady Shores
White Pine
Plainview
Beach

Resubdiv of
Lot 19, White Pine B.
Sunset
Beach

IN WHOSE NAME ASSESSED	TO WHOM TRANSFERRED	SUB-DIVISION	Sec. or Lot	Town or Block	Range	NO. OF ACRES		No. of School District	VALUATION BY SCHOOL DISTRICTS					SOLD FOR TAXES	Rate and Tax Less Homestead Exemption Mills	State Tax on Non-Homestead Mills	TOTAL GENERAL TAXES	SPECIAL ASSESSMENTS					TOTAL TAXES	PAID	WHEN PAID	Number of Receipt	March Settlement 1943	June Settlement 1943	Penalty	November Settlement 1943	Penalty	Collections to First Monday in January 1944	Penalty	Delinquent on First Monday in January 1944	Total Delinquent Tax and Penalty	REMARKS																			
						Acres	100s		District No.	District No.	District No.	District No.	District No.					District No.	District No.	District No.	District No.	District No.															\$	cts.	\$	cts.	\$	cts.	\$	cts.	\$	cts.	Month	Day	Year						
		Plainview Beach Part of Lot 1-115-140-21																																																					
Joe Welsch			1										116					1920																																					
Clarence Fox			2										94					1556																																					
Geo. S. & Clara B. Page			3										20					330																																					
Geo. S. Page			4										65					1076																																					
Chas. L. Page			5										20					330																																					
Fred R. Bilgelow			6										82					1358																																					
Lena M. Carlson	Margaret Carlson		7										20					330																																					
George Benish			8										115					1904																																					
Christina McPhilly			9										20					330																																					
Elizabeth W. Scott	Oscar B. & Caroline Bakken		10										102					1688																																					
			11																																																				
			12																																																				
			13																																																				
			14																																																				
			15																																																				
			16																																																				
			17																																																				
			18																																																				
			19																																																				
			20																																																				
													116 1/4 538 N 1/4 65 1/4						10822																																				

Resubdiv of Lot 19, White Pine B. Sunset Beach

Tax List of Real Property in the Town of Hiram

Cass County, Minnesota, for Taxes for the Year 1942

IN WHOSE NAME ASSESSED	TO WHOM TRANSFERRED	SUB-DIVISION	Sec. or Lot	Town or Block	Range	NO. OF ACRES	No. of School District	VALUATION BY SCHOOL DISTRICTS					SOLD FOR TAXES	Rate and Tax Less Homestead Exemption	State Tax on Non-Homestead	TOTAL GENERAL TAXES	SPECIAL ASSESSMENTS				TOTAL TAXES	PAID	WHEN PAID	Number of Receipts	March Settlement 1943	June Settlement 1943	Penalty	November Settlement 1943	Penalty	Collections to First Monday in January 1944	Penalty	Delinquent on First Monday in January 1944	Total Delinquent Tax and Penalty	REMARKS																								
								District No.	District No.	District No.	District No.	District No.					Dollars	Dollars	Dollars	Dollars															Dollars	Dollars	Dollars	Dollars	Dollars	Dollars	Dollars	Dollars	Dollars	Dollars														
								Rate	Rate	Rate	Rate	Rate					Mills	Mills	Mills	Mills															Mills	Mills	Mills	Mills	Mills	Mills	Mills	Mills	Mills	Mills														
<i>Nels Angfeldt</i>		<i>The Sea Wall Part of Lot 3 - Sec. 16-40-21</i>	1																																																							
	12																																																									
	2																																																									
	3																																																									
	4																																																									
	5																																																									
	6																																																									
	7																																																									
	8																																																									
	9																																																									
	10																																																									
	11																																																									
	12																																																									
	13																																																									
	14																																																									
	15																																																									
	16																																																									
	17																																																									
	18																																																									
	19																																																									
20																																																										
												240 N.H.																																														
													3960	240																																												
														200																																												

Long Beach
 Shady Shore
 White Pine Beach
 Plainview Beach
 Sea Wall

Parkersburg
 White Pine B.
 I. Street
 H. Street
 Sunset Beach
 Carlton Beach

Tax List of Real Property in the Town of Hiram

Cass County, Minnesota, for Taxes for the Year 1942

Re-arrangement of Lot 19, White Pine B. Shady Shores White Pine Beach Plainview Beach Sea Hill

Table with columns: IN WHOSE NAME ASSESSED, TO WHOM TRANSFERRED, SUB-DIVISION, Sec. or Lot, Town or Block, Range, NO. OF ACRES (Acres, 100s), No. of School District, VALUATION BY SCHOOL DISTRICTS (VALUATION, District No. Rate, District No. Rate, District No. Rate, District No. Rate, SOLD FOR TAXES), Rate and Tax Loss Exemption Mills, State Tax on Non-Homestead Mills, TOTAL GENERAL TAXES, SPECIAL ASSESSMENTS, TOTAL TAXES, PAID, WHEN PAID, Number of Receipt, March Settlement 1943, June Settlement 1943, Penalty, November Settlement 1943, Penalty, Collections to First Monday in January 1944, Penalty, Delinquent on First Monday in January 1944, Total Delinquent Tax and Penalty, REMARKS.

Claude E. Shelton

Harry P. & Signe H. Kneeland

Julia S. Gamble

Harry P. & Signe H. Kneeland

Leah C. Sigvaland

Julia S. Gamble

Re-arrangement of Lot 19 White Pine Beach

(All lying S. of block 19 of Long Beach)

Implications: lying S. of N. line of 19th & Long Beach intended to intersect N. line of Lake Street - Part of White Pine Beach

all that part of lot 5-10 on arrangement of block 19 part White Pine Beach lying S. of N. line of Lot 19 block 19 that part Long Beach intended to intersect N. line of Lake St. No line Lake St. part White Pine Beach.

7 1/2 60 1/2 67

Table with columns: Rate and Tax Loss Exemption Mills, State Tax on Non-Homestead Mills, TOTAL GENERAL TAXES, SPECIAL ASSESSMENTS, TOTAL TAXES, PAID, WHEN PAID, Number of Receipt, March Settlement 1943, June Settlement 1943, Penalty, November Settlement 1943, Penalty, Collections to First Monday in January 1944, Penalty, Delinquent on First Monday in January 1944, Total Delinquent Tax and Penalty, REMARKS.

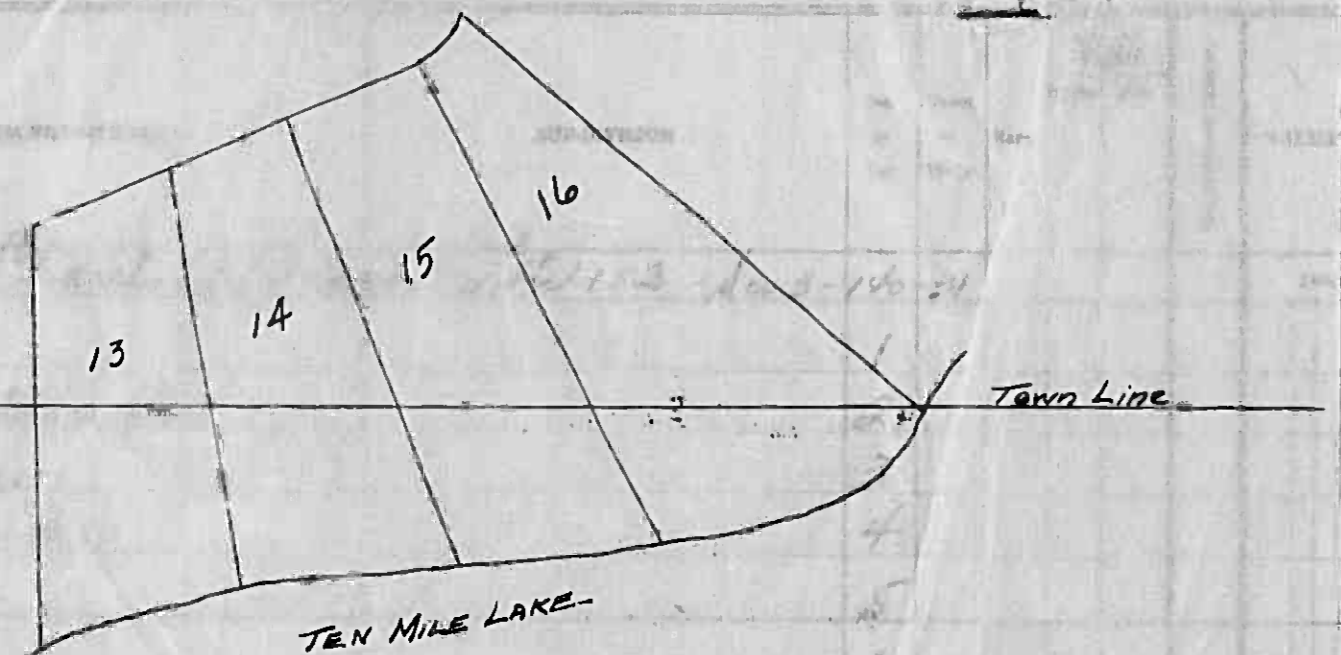
1112 60 48

1170 1160

348

174 Cant

Tax Map in the Town of Hiram



IN WHOSE NAME ASSESSED

William Eichenberg

Shingabe Township
Hiram Township

Wm Eichenberg
Wm Eichenberg

Wm Eichenberg

Wm Eichenberg

Lots 13-14-15-16 - CHARITON BEACH

Chariton Beach

Grand Total

IN WHOSE NAME ASSESSED	VALUATION BY SCHOOL DISTRICTS	SOLD FOR TAXES	Rate and Tax Less Homestead Exemption	State Tax on Non-Homestead	TOTAL GENERAL TAXES	SPECIAL ASSESSMENTS				TOTAL TAXES	PAID	WHEN PAID	Number of Receipt	March Settlement 1943	June Settlement 1943	Penalty	November Settlement 1943	Penalty	Collections to First Monday in January 1944	Penalty	Delinquent on First Monday in January 1944	Total Delinquent Tax and Penalty	REMARKS	
						District No.	District No.	District No.	District No.															
						Dollars	Dollars	Dollars	Dollars															
1	123		20.36	7.39	27.75																			
2	196		37.47	17.68	55.15																			
3	108		17.88	8.28	26.16																			
4	133		22.02	10.28	32.30																			
5	75		12.47	5.88	18.35																			
6	166		27.48	12.78	40.26																			
7	187		30.94	14.38	45.32																			
8	204		33.76	15.58	49.34																			
9	154		25.48	11.88	37.36																			
10	30		4.96	2.38	7.34																			
11	30		4.96	2.38	7.34																			
12	30		4.96	2.38	7.34																			
13	20		3.30	1.58	4.88																			
14	20		3.30	1.58	4.88																			
15	20		3.30	1.58	4.88																			
16	20		3.30	1.58	4.88																			
Grand Total	1423 N.H.		235.46	104.68	340.14																			

Refund #73884 1-4-44

13.52 Abated

23.00

26.62

34.48

245.92

220.20

23.00

13.52 A

13.52 over

