

Assessment & Tax List - 1955

Hiram

Assessment Roll and Tax List of Real Property in the Town of *Hiram*, of *Hiram* County, Minnesota. *Indicate Type of Property: R-Residential, C-Commercial, I-Industrial, U-Utility, F-Farm

Table with columns: IN WHOSE NAME ASSESSED, TO WHOM TRANSFERRED, DESCRIPTION OF PROPERTY, TRUE AND FULL VALUATIONS, ASSESSED VALUATIONS, FINAL EQUALIZED VALUE. Includes handwritten entries for John E. Blomquist, Marion E. Lier, and others.

Cass County, Minnesota, for Taxes for the Year 1955.

Table with columns: SOLD FOR TAXES, VALUATIONS BY SCHOOL DISTRICTS AS EQUALIZED BY DEPARTMENT OF TAXATION, Tax including State Homestead, State Tax on Non-Homestead, SPECIAL TAXES, TOTAL TAXES, PAID, WHEN PAID, Number of Receipt, March Settlement 1956, June Settlement 1956, Penalty, November Settlement 1956, Penalty, Collections to First Monday in January 1957, Delinquent on First Monday in January 1957, Total Delinquent Tax and Penalty, REMARKS. Includes handwritten tax amounts and payment dates.

Long Shady Stores White Pine Beach Fairview Beach

Assessment Roll and Tax List of Real Property in the Town of Hiawatha of Hiawatha County, Minnesota.
 *Indicate Type of Property: R-Residential, C-Commercial, I-Industrial, U-Utility, F-Farm

IN WHOSE NAME ASSESSED	TO WHOM TRANSFERRED	DESCRIPTION OF PROPERTY				No. School District	Indicate Homestead Yes or No	Indicate Agricultural Yes or No	Indicate Type of Property	TRUE AND FULL VALUATIONS				ASSESSED VALUATIONS					FINAL EQUALIZED VALUE		
		SUBDIVISION	Sec. or Lot	Town or Block	No. of Acres of Land					LAND Exclusive of Structures and Improvements	BUILDINGS and Other Structures	MACHINERY Permanently Attached to Real Estate	TOTAL True and Full Value	RURAL		ALL OTHER				Total Assessed Value as Equalized by the Board of Review	
														Homestead Up to \$4,000 20%	Over \$4,000 and Non-Homestead 33 1/3%	Homestead Up to \$4,000 25%	Over \$4,000 and Non-Homestead 40%	MACHINERY Permanently Attached to Real Estate 33 1/3%			TOTAL ASSESSED VALUE
														Dollars	Dollars	Dollars	Dollars	Dollars			
State of Minnesota		1	N-E 1/4 of N-B 1/4	Lot 1	6 1/2 51																
State of Minnesota		2	N-W 1/4 of N-E 1/4	Lot 2																	
State of Minnesota		3	S-W 1/4 of N-E 1/4																		
State of Minnesota		4	S-E 1/4 of N-E 1/4																		
		5																			
State of Minnesota		6	N-E 1/4 of N-W 1/4	Lot 3																	
State of Minnesota		7	N-W 1/4 of N-W 1/4	Lot 4																	
State of Minnesota		8	S-W 1/4 of N-W 1/4	Lot 5																	
State of Minnesota		9	S-E 1/4 of N-W 1/4																		
		10																			
State of Minnesota		11	N-E 1/4 of S-W 1/4																		
State of Minnesota		12	N-W 1/4 of S-W 1/4	Lot 6																	
State of Minnesota		13	S-W 1/4 of S-W 1/4	Lot 7																	
State of Minnesota		14	S-E 1/4 of S-W 1/4																		
		15																			
State of Minnesota		16	N-E 1/4 of S-E 1/4																		
State of Minnesota		17	N-W 1/4 of S-E 1/4																		
State of Minnesota		18	S-W 1/4 of S-E 1/4																		
State of Minnesota		19	S-E 1/4 of S-E 1/4																		
		20																			

Cass County, Minnesota, for Taxes for the Year 1955.

SOLD FOR TAXES	VALUATIONS BY SCHOOL DISTRICTS AS EQUALIZED BY DEPARTMENT OF TAXATION						Tax including State Homestead	State Tax on Non-Homestead	SPECIAL TAXES	TOTAL TAXES	PAID	WHEN PAID	Number of Receipt	March Settlement 1956	June Settlement 1956	Penalty	November Settlement 1956	Penalty	Collections to First Monday in January 1957	Penalty	Delinquent on First Monday in January 1957	Total Delinquent Tax and Penalty	REMARKS
	District No.	District No.	District No.	District No.	District No.	District No.																	
	Rate	Rate	Rate	Rate	Rate	Rate																	
	Mills	Mills	Mills	Mills	Mills	Mills																	
1																							
2																							
3																							
4																							
5																							
6																							
7																							
8																							
9																							
10																							
11																							
12																							
13																							
14																							
15																							
16																							
17																							
18																							
19																							
20																							

Long Beach
 Shady Shores
 White Pine Beach
 Fairview Beach
 The Arrangement of 19 of White Pine

Assessment Roll and Tax List of Real Property in the Town of Hiram, Minnesota

Table with columns: IN WHOSE NAME ASSESSED, TO WHOM TRANSFERRED, DESCRIPTION OF PROPERTY, TRUE AND FULL VALUATIONS, ASSESSED VALUATIONS, FINAL EQUALIZED VALUE.

Cass County, Minnesota, for Taxes for the Year 1955.

Table with columns: SOLD FOR TAXES, VALUATIONS BY SCHOOL DISTRICTS AS EQUALIZED BY DEPARTMENT OF TAXATION, SPECIAL TAXES, TOTAL TAXES, PAID, WHEN PAID, Number of Receipt, March Settlement 1955, June Settlement 1955, Penalty, November Settlement 1955, Penalty, Collections to First Monday in January 1957, Delinquent on First Monday in January 1957, Total Delinquent Tax and Penalty, REMARKS.

Long Beach, Shady Shores, White Pine Beach, Plainview Beach, Rearrangement of 19 of White Pine

Assessment Roll and Tax List of Real Property in the Town of Neum

*Indicate Type of Property: R-Residential, C-Commercial, I-Industrial, U-Utility, F-Farm

Table with columns: IN WHOSE NAME ASSESSED, TO WHOM TRANSFERRED, DESCRIPTION OF PROPERTY, TRUE AND FULL VALUATIONS, ASSESSED VALUATIONS, and FINAL EQUALIZED VALUE. Includes handwritten entries for Cecil & Opal Robey, George Bowman, L.W. Bowman, and others.

(Continued on next page)

Cass County, Minnesota, for Taxes for the Year 1955.

Table with columns: SOLD FOR TAXES, VALUATIONS BY SCHOOL DISTRICTS AS EQUALIZED BY DEPARTMENT OF TAXATION, Tax Including State Homestead, State Tax on Non-Homestead, SPECIAL TAXES, TOTAL TAXES, PAID, WHEN PAID, Number of Receipt, March Settlement 1956, June Settlement 1956, November Settlement 1956, Collections to First Monday in January 1957, Delinquent on First Monday in January 1957, Total Delinquent Tax and Penalty, and REMARKS. Includes handwritten entries for various tax payments and dates.

Long Beach, Starry Shores, White Pine Beach, and other vertical text on the right edge of the page.

Assessment Roll and Tax List of Real Property in the Town of *Hiram*

*Indicate Type of Property: R-Residential, C-Commercial, I-Industrial, U-Utility, F-Farm

Table with columns: IN WHOSE NAME ASSESSED, TO WHOM TRANSFERRED, SUBDIVISION, TRUE AND FULL VALUATIONS (LAND, BUILDINGS, MACHINERY, TOTAL), ASSESSED VALUATIONS (RURAL, ALL OTHER, MACHINERY, TOTAL), FINAL EQUALIZED VALUE.

(Continued on next page)

Cass County, Minnesota, for Taxes for the Year 1955.

Table with columns: SOLD FOR TAXES, VALUATIONS BY SCHOOL DISTRICTS AS EQUALIZED BY DEPARTMENT OF TAXATION, Tax including State Homestead, SPECIAL TAXES, TOTAL TAXES, PAID, WHEN PAID, Number of Receipt, March Settlement 1956, June Settlement 1956, November Settlement 1956, Collections to First Monday in January 1957, Delinquent on First Monday in January 1957, Total Delinquent Tax and Penalty, REMARKS.

Long, Shortes, White Pine Beach, Larrier Beach, re-arrangement of 19 of White Pine

Assessment Roll and Tax List of Real Property in the Town of Hiram, Cass County, Minnesota, for Taxes for the Year 1955.

*Indicate Type of Property: R-Residential, C-Commercial, I-Industrial, U-Utility, F-Farm

Table with columns: IN WHOSE NAME ASSESSED, TO WHOM TRANSFERRED, DESCRIPTION OF PROPERTY, TRUB AND FULL VALUATIONS (LAND, BUILDINGS, MACHINERY, TOTAL), ASSESSED VALUATIONS (RURAL, ALL OTHER, MACHINERY, TOTAL), Total Assessed Value, FINAL EQUALIZED VALUE.

Cass County, Minnesota, for Taxes for the Year 1955.

Table with columns: SOLD FOR TAXES, VALUATIONS BY SCHOOL DISTRICTS AS EQUALIZED BY DEPARTMENT OF TAXATION, Tax including State Homestead, State Tax on Non-Homestead, SPECIAL TAXES, TOTAL TAXES, PAID, WHEN PAID, Number of Receipt, March Settlement 1956, June Settlement 1956, Penalty, November Settlement 1956, Penalty, Collections to First Monday in January 1957, Penalty, Delinquent on First Monday in January 1957, Total Delinquent Tax and Penalty, REMARKS.

Assessment Roll and Tax List of Real Property in the Town of Swanum of Minn.

*Indicate Type of Property: R-Residential, C-Commercial, I-Industrial, U-Utility, F-Farm

Table with columns: IN WHOSE NAME ASSESSED, TO WHOM TRANSFERRED, DESCRIPTION OF PROPERTY, TRUE AND FULL VALUATIONS, ASSESSED VALUATIONS, FINAL EQUALIZED VALUE.

Cass County, Minnesota, for Taxes for the Year 1955.

Table with columns: SOLD FOR TAXES, VALUATIONS BY SCHOOL DISTRICTS AS EQUALIZED BY DEPARTMENT OF TAXATION, SPECIAL TAXES, TOTAL TAXES, PAID, WHEN PAID, Number of Receipt, March Settlement 1956, June Settlement 1956, November Settlement 1956, Collections to First Monday in January 1957, Delinquent on First Monday in January 1957, Total Delinquent Tax and Penalty, REMARKS.

Vertical text on the right edge of the page: White Pine Beach, Interview Beach, arrangement of...

Assessment Roll and Tax List of Real Property in the Town of Louns of Hennepin County, Minnesota
*Indicate Type of Property: R-Residential, C-Commercial, I-Industrial, U-Utility, F-Farm

IN WHOSE NAME ASSESSED	TO WHOM TRANSFERRED	DESCRIPTION OF PROPERTY				No. School District	Indicate Homestead Yes or No	Indicate Agricultural Yes or No	* Indicate Type of Property	TRUE AND FULL VALUATIONS			ASSESSED VALUATIONS					FINAL EQUALIZED VALUE	
		SUBDIVISION	Sec. or Lot	Town or Block	Range					Number of Acres of Land	TOTAL True and Full Value	RURAL		ALL OTHER		MACHINERY Permanently Attached to Real Estate	TOTAL ASSESSED VALUE		Total Assessed Value as Equalized by the Board of Review
												Acres	100ths	Homestead Up to \$4,000 20%	Over \$4,000 and Non-Homestead 33 1/8%				
Gerald E Wood		NE 1/4 of NE 1/4	15	44	31	40		Un	1/4	No									
Alfred Wood		NW 1/4 of NE 1/4				40		"	1/4										
"		SW 1/4 of NE 1/4				40		"	"										
D. E. Wood		SE 1/4 of NE 1/4				40		"	"										
Anna C. Blanchard		NE 1/4 of NW 1/4				40		"	"										
		NW 1/4 of NW 1/4																	
State of Minnesota		SW 1/4 of NW 1/4																	
State of Minnesota		SE 1/4 of NW 1/4																	
Arne & Selma Carlsson		NE 1/4 of SW 1/4				40		710	"										
Earl A. & Lorraine D. Anderson		NW 1/4 of SW 1/4				40		"	"										
Victor Martin		SW 1/4 of SW 1/4				40		"	"										
Charles F. & Aline K. Alstrott		SE 1/4 of SW 1/4 less town hall				40		"	"										
State of Minnesota		NE 1/4 of SE 1/4																	
Arne & Selma Carlsson		NW 1/4 of SE 1/4				40		"	"										
Rex Carlsson		SW 1/4 of SE 1/4				40		1/4	"										
State of Minnesota		SE 1/4 of SE 1/4																	

[Continued on Next Page]

440

Cass County, Minnesota, for Taxes for the Year 1955.

SOLD FOR TAXES	VALUATIONS BY SCHOOL DISTRICTS AS EQUALIZED BY DEPARTMENT OF TAXATION						Tax including State Homestead	State Tax on Non-Homestead	SPECIAL TAXES	TOTAL TAXES	PAID	WHEN PAID	Number of Receipt	March Settlement 1955	June Settlement 1955	Penalty	November Settlement 1955	Penalty	Collections to First Monday in January 1957	Penalty	Delinquent on First Monday in January 1957	Total Delinquent Tax and Penalty	REMARKS
	District No.	Rate	District No.	Rate	District No.	Rate																	
	Dollars	Dollars	Dollars	Dollars	Dollars	Dollars																	

2156 12372

1314 1500

3520

Long Beach Shady Shore White Pine Beach Fairview Beach Re-arrangement of

Assessment Roll and Tax List of Real Property in the Town of Hiram, of Hiram County, Minnesota

*Indicate Type of Property: R-Residential, C-Commercial, I-Industrial, U-Utility, F-Farm

Table with columns: IN WHOSE NAME ASSESSED, TO WHOM TRANSFERRED, DESCRIPTION OF PROPERTY, TRUE AND FULL VALUATIONS (LAND, BUILDINGS, MACHINERY, TOTAL), ASSESSED VALUATIONS (RURAL, ALL OTHER, MACHINERY, TOTAL), FINAL EQUALIZED VALUE.

Cass County, Minnesota, for Taxes for the Year 1955.

Table with columns: SOLD FOR TAXES, VALUATIONS BY SCHOOL DISTRICTS AS EQUALIZED BY DEPARTMENT OF TALLATION, TAX INCLUDING STATE HOMESTEAD, SPECIAL TAXES, TOTAL TAXES, PAID, WHEN PAID, Number of Receipt, March Settlement 1956, June Settlement 1956, November Settlement 1956, Collections to First Monday in January 1957, Delinquent on First Monday in January 1957, Total Delinquent Tax and Penalty, REMARKS.

Assessment Roll and Tax List of Real Property in the Town of Nissau, Cass County, Minnesota, for Taxes for the Year 1955.

Table with columns: IN WHOSE NAME ASSESSED, TO WHOM TRANSFERRED, DESCRIPTION OF PROPERTY, TRUE AND FULL VALUATIONS, ASSESSED VALUATIONS, FINAL EQUALIZED VALUE.

1955 BK. 7-1-1955

[Continued on next page]

11350

Cass County, Minnesota, for Taxes for the Year 1955.

Table with columns: VALUATIONS BY SCHOOL DISTRICTS AS EQUALIZED BY DEPARTMENT OF TAXATION, Tax including State Homestead, State Tax on Non-Homestead, SPECIAL TAXES, TOTAL TAXES, PAID, WHEN PAID, Number of Receipt, March Settlement 1956, June Settlement 1956, November Settlement 1956, Penalty, Collections to First Monday in January 1957, Delinquent on First Monday in January 1957, Total Delinquent Tax and Penalty, REMARKS.

Long Beach, Sandy Shores, White Pine Bay, Mainview Beach, 10 of White Pine

Assessment Roll and Tax List of Real Property in the Town of Duane, of Duane County, Minnesota.
*Indicate Type of Property: R-Residential, C-Commercial, I-Industrial, U-Utility, F-Farm

IN WHOSE NAME ASSESSED	TO WHOM TRANSFERRED	DESCRIPTION OF PROPERTY				No. School District	Indicate Homestead Yes or No	Indicate Agricultural Yes or No	Indicate Type of Property	TRUE AND FULL VALUATIONS					ASSESSED VALUATIONS					FINAL EQUALIZED VALUE		
		SUBDIVISION	Sec. of Lot	Town or Block	Rog.					Number of Acres of Land	LAND Exclusive of Structures and Improvements	BUILDINGS and Other Structures	MACHINERY Permanently Attached to Real Estate	TOTAL True and Full Value	RURAL		ALL OTHER		MACHINERY Permanently Attached to Real Estate 33 1/8%		TOTAL ASSESSED VALUE	Total Assessed Value as Equalized by the Board of Review
															Acres	100ths	Homestead Up to \$4,000 20%	Over \$4,000 and Non-Homestead 33 1/8%				
<i>Christina L. & Lee J. Seapp</i>	<i>H.W. & Edith M. Jensen</i>	NE 1/4 of NW 1/4	17	140	51	31	wa	No	Yes													
<i>Robert W. & Emily J. Anderson</i>		NW 1/4 of NE 1/4				40																
		SW 1/4 of NE 1/4				40																
<i>Arthur J. Peterson</i>	State of Minnesota	Lot 2 less 71,300"				45																
<i>Robert E. & Lois Barr</i>		N 1/2 of Lot 2				2																
State of Minnesota		NE 1/4 of NW 1/4																				
State of Minnesota		NW 1/4 of NW 1/4																				
State of Minnesota		SW 1/4 of NW 1/4																				
State of Minnesota		SE 1/4 of NW 1/4																				
<i>Carl M. & Elizabeth Carlson</i>		S 200' of 71,300' of Lot 2				4																
State of Minnesota		NE 1/4 of SW 1/4																				
State of Minnesota		NW 1/4 of SW 1/4																				
<i>Andrew J. & Bessie V. Gray</i>	State of Minnesota (Cont to Robert Barr)	SW 1/4 of SW 1/4				40																
State of Minnesota		SE 1/4 of SW 1/4																				
<i>Eric G. & Helma H. Lundberg</i>	State of Minnesota	NE 1/4 of SE 1/4 Lot 3				57.95																
State of Minnesota		NW 1/4 of SE 1/4																				
State of Minnesota		SW 1/4 of SE 1/4																				
State of Minnesota		SE 1/4 of SE 1/4																				
						219.95																

Cass County, Minnesota, for Taxes for the Year 1955.

SOLD FOR TAXES	VALUATIONS BY SCHOOL DISTRICTS AS EQUALIZED BY DEPARTMENT OF TAXATION					Tax including State Homestead	State Tax on Non-Homestead	SPECIAL TAXES	TOTAL TAXES	PAID	WHEN PAID	Number of Receipt	March Settlement 1955	June Settlement 1955	Penalty	November Settlement 1955	Penalty	Collections to First Monday in January 1957	Penalty	Delinquent on First Monday in January 1957	Total Delinquent Tax and Penalty	REMARKS														
	District No.	District No.	District No.	District No.	District No.																		Dollars	Dollars	Dollars	Dollars	Dollars	Dollars	Dollars	Dollars	Dollars	Dollars	Dollars	Dollars	Dollars	Dollars
	Rate	Rate	Rate	Rate	Rate																		Mills	Mills	Mills	Mills	Mills	Mills	Mills	Mills	Mills	Mills	Mills	Mills	Mills	Mills
1						123	25.18	64	25.82	1	PAID IN FULL MAY 31 1955	2281		25.82																						
2						41	8.40	22	8.62	2										8.62																
3						41	8.40	22	8.62	3										8.62																
4										4																										
5						10	2.04	26	2.10	5	PAID IN FULL APR 25 1955	5595		2.10																						
6										6																										
7										7																										
8										8																										
9										9																										
10						4	12.0	62	25.18	10	PAID IN FULL MAY 31 1955	10348		25.18																						
11										11																										
12										12																										
13						40	13.92	36	14.28	13	PAID IN FULL OCT 31 1955	5773		7.14		7.14																				
14										14																										
15										15																										
16										16																										
17										17																										
18										18																										
19										19																										
20										20																										
						403	82.50	212	84.62					60.24		7.14				17.24																

Long Beach, Sandy Shores, White Pine Beach, Tinleyview Beach, 19 of White Pine

Assessment Roll an

Law of Real Property 175'

FORM 504 (55)

Indicate Type of Property

TRUE AND SHU

LAND USES AND BUILDINGS

DOLLARS

18-10-31

IN WHOSE NAME ASSESSED	TO WHOM TRANSFERRED	E	LAND USES AND BUILDINGS	DOLLARS
State of Minnesota		1	Carlson W. 104'	
John Carlson	Wm. Katz	2	E. 100' of W. 204'	
William H. & Edna L. Katz	Brown	3	E. 100' of W. 304'	
State of Minnesota		4		
Leo. E. & Selma R. Brown		5	E. 100' of W. 404'	
Robert J. Cocks		6	E. 100' of W. 504'	
Edward O. Schaffer & Jim Armstrong		7	E. 200' of W. 804'	
Charles Ruback		8	E. 100' of W. 1004'	
Ruth Swenson		9	E. 200' of W. 1004'	
Harold S. & Alice M. Kostka		10	E. 100' of W. 1004'	
Raymond M. Young		11	E. 100' of W. 1004'	
Jerome L. & Patricia S. Katz		12	E. 100' of W. 1104'	
State of Minnesota		13		
State of Minnesota		14	E. 100' of W. 1204'	
Blanche K. Stokes		15	E. 50' of W. 1584'	
State of Minnesota		16		
State of Minnesota		17		
State of Minnesota		18		
State of Minnesota		19		
State of Minnesota		20		

(Continued on Next Page)

88.66

C - Commercial, I - Industrial, U - Utility, F - Farm

ASSESSED VALUATIONS					Total Assessed Value as Equalized by the Board or Review	FINAL EQUALIZED VALUE
RURAL	ALL OTHER	MACHINERY	TOTAL ASSESSED VALUE	Dollars		
Homestead up to \$4,000 20%	Over \$4,000 Homestead 25%	Over \$4,000 and Non-Homestead 40%	Permanently Attached to Real Estate 33 1/3%	Dollars	Dollars	

SOLD FOR TAXES	VALUATIONS BY SCHOOL DISTRICTS AS EQUALIZED BY DEPARTMENT OF TAXATION						Tax including State Homestead	State Tax on Non-Homestead	SPECIAL TAXES	TOTAL TAXES	PAID	WHEN PAID	Number of Receipt	March Settlement 1956	June Settlement 1956	Penalty	November Settlement 1956	Penalty	Collections to First Monday in January 1957	Penalty	Delinquent on First Monday in January 1957	Total Delinquent Tax and Penalty	REMARKS
	District No.	District No.	District No.	District No.	District No.	District No.																	

Long Beach, Shady Shores, White Pine Beach, Rainview Beach, arrangement of 19 of White Pine

Assessment Roll and Tax List of Real Property in the Town of *Stiam* of *Stiam* County, Minnesota, for Taxes for the Year 1955.

Table with columns: IN WHOSE NAME ASSESSED, TO WHOM TRANSFERRED, DESCRIPTION OF PROPERTY, TRUE AND FULL VALUATIONS, ASSESSED VALUATIONS, FINAL EQUALIZED VALUE. Includes handwritten entries for various property owners like John Carlson, William H. & Edna S. Katz, Leo. E. & Selma R. Brown, etc.

(Continued on Next Page)

Handwritten notes and calculations on a separate sheet, including a list of property values and acreages.

Cass County, Minnesota, for Taxes for the Year 1955.

Table with columns: SOLD FOR TAXES, VALUATIONS BY SCHOOL DISTRICTS AS EQUALIZED BY DEPARTMENT OF TAXATION, SPECIAL TAXES, TOTAL TAXES, PAID, WHEN PAID, Number of Receipt, March Settlement 1956, June Settlement 1956, November Settlement 1956, Collections to First Monday in January 1957, Delinquent on First Monday in January 1957, Total Delinquent Tax and Penalty, REMARKS. Includes handwritten entries for various property owners and tax payment dates.

Vertical text on the right edge of the page: Long Beach, Shady Shores, White Pine Beach, Fairview Beach, arrangement of 10 of White Pine.

Assessment Roll of Real Property in the

LOT 2 - 18-140-81

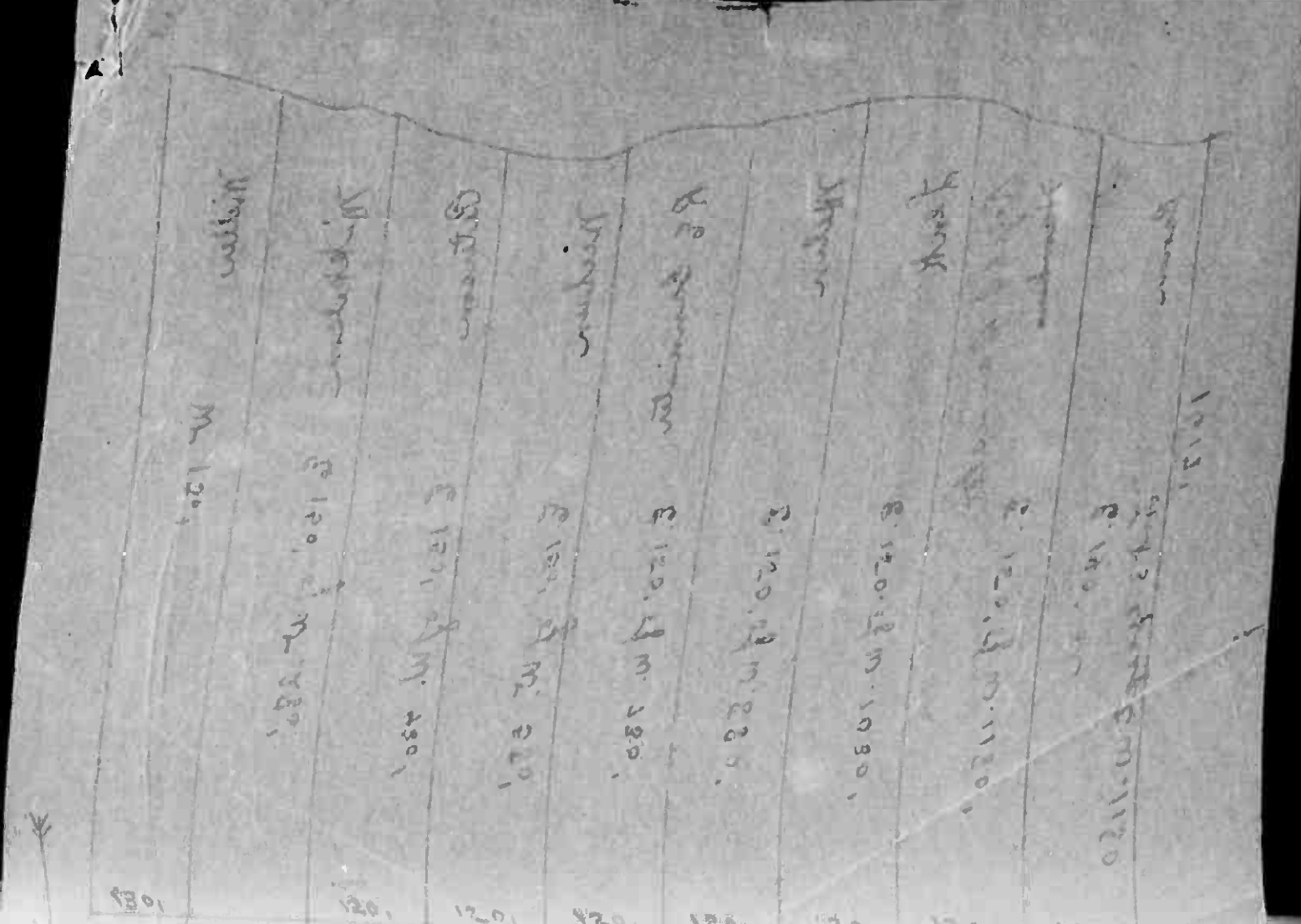
Cass County, Minnesota, for Taxes for the Year 1955.

IN WHOSE NAME ASSESSED	TO WHOM ?	Dimensions	Area	Value
Angelo Santiago Robert		180'		
Gertrude D. & Douglas A. B.		150'		
Gertrude Woodbeck		150'		
Emil H. & Margaret Braun		150'		
Ralph E. & Florence M. Ba		150'		
Theresa A. & Mary V. Lovels		150'		
Floyd Gammeter		150'		
Theodore A. & Mary V. Lovels		150'		
Anthony L. & Lucille L. S.		150'		
Arthur Miller		150'		
Gordon A. & Theresia M.		150'		
Marlyse V. Peterson		150'		
Edward E. Nielsen		150'		
Ralph E. & Florence M. Ba		150'		
Arnold L. & Dorothy L. Mason		150'		
William E. Link		150'		
Ralph E. Gammeter		150'		
James J. & Agnes Hawkins		150'		
Leo E. Brown		150'		

SOLD FOR TAXES	VALUATIONS BY SCHOOL DISTRICTS AS EQUALIZED BY DEPARTMENT OF TAXATION						Tax including State Homestead	State Tax on Non-Homestead	SPECIAL TAXES	TOTAL TAXES	PAID	WHEN PAID	Number of Receipt	March Settlement 1955	June Settlement 1955	Penalty	November Settlement 1955	Penalty	Collections to First Monday in January 1957	Penalty	Delinquent on First Monday in January 1957	Total Delinquent Tax and Penalty	REMARKS
	District No.	District No.	District No.	District No.	District No.	District No.																	
1						37	758	18	776	1	PAID IN FULL	MAY 20 1955	4734		776								
2						12	246	26	252	2	PAID IN FULL	MAY 31 1955	10359		252								
3	SOLD FOR TAXES					78	1596	40	1636	3												1636	
4						76	1556	40	1596	4	PAID IN FULL	MAY 31 1955	10353		1596								
5						67	1372	34	1406	5	PAID IN FULL	MAY 31 1955	10361		1406								
6						25	512	42	524	6	PAID IN FULL	APR 23 1955	5553		524								
7						61	1248	32	1280	7	PAID IN FULL	PR 23 1955	5555		1280								
8						25	512	12	524	8	PAID IN FULL	AUG 15 1955	13808				1048	26					
9						25	512	12	524	9	PAID IN FULL	AUG 15 1955											
10	SOLD FOR TAXES					25	512	12	524	10	PAID IN FULL	JAN 1 1955	10712						524	42			
11	SOLD FOR TAXES					104	2128	54	2182	11												2182	2400
12						89	1822	46	1868	12	PAID IN FULL	MAY 31 1955	10360		1868								
13	SOLD FOR TAXES					104	2128	54	2182	13	PAID IN FULL	JUL 9 1955	10540				2182						
14						25	512	12	524	14	PAID IN FULL	MAY 31 1955	10361		524								
15						89	1822	46	1868	15	PAID IN FULL	OCT 5 1955	14184		934		934						
16						25	512	12	524	16	Pd DR # 28781	1-15-57	542									524 Pd	
17						54	1106	28	1134	17	PAID IN FULL	MAY 31 1955	10354		1134								
18	SOLD FOR TAXES					62	1270	32	1302	18	PAID IN FULL	MAY 30 1955	6090		1302								
19										19													
20										20													
						983	20124	607	20626						11596		4164		524		4342		

Assessment and List of Real Property in the Town of...

Cass County, Minnesota, for Taxes for the Year 1955.



IN WHOSE NAME ASSESSED	TO WHOM TRANSFERRED	DESCRIPTION OF PROPERTY	Subdiv.	Town or Block	No. of Acres of Land	No. School District	Indicate House Used	Indicate Agricultural Use	* Indicate Type of Property	TRUE AND PURE		TOTAL Value
										LAND Enclosure of Structures and Improvements	BUILDING and Other	
Angelo Santiago	Robert Bisson	E 50' of Lot 1 + W 100' of Lot 2			5.41				Un	No		
Gertrude D. & Douglas O. Woodbeck		E 15' of W 250' of Lot 2			2.50				"	"		
Gertrude Woodbeck		E 75' of W 175' of Lot 2			2.50				"	"		
Emil N. & Margaret Braunsnik		E 150' of W 400' of Lot 2			4.88				"	"		
Ralph E. & Florence M. Bannister		E 150' of W 550' of Lot 2			5.10				"	"		
Joseph A. & Mary V. Loveland		E 150' of W 700' of Lot 2			5.27				"	"		
Theodore H. & Mary V. Loveland		E 300' of W 1000' of Lot 2			12.75				"	"		
Anthony A. & Lucille L. Boyer		E 150' of W 1150' of Lot 2			6.39				"	"		
Arthur Miller		E 150' of W 1300' of Lot 2			6.36				"	"		
Landon A. & Norris R. Mickelson		E 20' of Lot 2 + W 130' of Lot 3			6.01				"	"		
Marlye V. Peterson		E 150' of W 280' of Lot 3			5.66				"	"		
Edward E. Nielsen		E 150' of W 430' of Lot 3			5.50				"	"		
Ralph E. & Florence M. Bannister		E 150' of W 550' of Lot 3			5.40				"	"		
Arnold L. & Dorothy S. Melius		E 150' of W 750' of Lot 3			5.66				"	"		
William L. Cook		E 150' of W 880' of Lot 3			5.96				"	"		
Ralph E. & Florence M. Bannister		E 150' of W 1030' of Lot 3			6.19				"	"		
John E. & Virginia A. Anderson		E 150' of W 1180' of Lot 3			6.19				"	"		
Leo E. Brown		E 140' of Lot 3 or (Lot 3) (Map)			5.19				"	"		

SOLD FOR TAXES	VALUATIONS BY SCHOOL DISTRICTS AS EQUALIZED BY DEPARTMENT OF TAXATION						Rate Tax on Non-Homestead	SPECIAL TAXES	TOTAL TAXES	PAID	WHEN PAID	Number of Receipt	March Settlement 1955	June Settlement 1955	Penalty	November Settlement 1955	Penalty	Collections to First Monday in January 1957	Penalty	Delinquency on First Monday in January 1957	Total Delinquent Tax and Penalty	REMARKS
	District No.	Rate	District No.	Rate	District No.	Rate																
	Dollars	Dollars	Dollars	Dollars	Dollars	Dollars																
	37		758	18	776	1 PAID IN FULL	MAR 28 1956	4739														
	12		246	06	252	2 PAID IN FULL	MAY 31 1956	13359														
	78		1596	40	1636	3															1636	
	76		1556	40	1596	4 PAID IN FULL	MAY 31 1956	13355														
	67		1372	34	1406	5 PAID IN FULL	MAY 31 1956	13361														
	25		512	12	524	6 PAID IN FULL	APR 23 1956	5553														
	61		2248	32	1280	7 PAID IN FULL	APR 23 1956	5553														
	25		512	12	524	8 PAID IN FULL	AUG 15 1956	13805									1048	26				
	25		512	12	524	9 PAID IN FULL	AUG 15 1956															
	25		512	12	524	10 PAID IN FULL	JAN 1 1957	712														
	104		2128	54	2182	11																
	89		1822	46	1868	12 PAID IN FULL	MAY 31 1956	10360														2182 + 2400
	104		2128	54	2182	13 PAID IN FULL	JUL 9 1956	10340														
	25		512	12	524	14 PAID IN FULL	MAY 31 1956	10361														
	87		1822	46	1868	15																
	25		512	12	524	16 Pd OR # 28781	1-15-57	5.42														5.42 Pd
	54		1106	28	1134	17 PAID IN FULL	MAY 31 1956	10354														
	62		1270	32	1302	18 PAID IN FULL	MAY 10 1956	6090														

103.46

78 20124 507 20626

11596 4164 524 4842

ASSESSMENT ROLL AND TAX LIST OF REAL PROPERTY IN THE TOWN OF...

*Indicate Type of Property: R-Residential, C-Commercial, I-Industrial, U-Utility, F-Farm

Table with columns: IN WHOSE NAME ASSESSED, TO WHOM TRANSFERRED, DESCRIPTION OF PROPERTY, TRUE AND FULL VALUATIONS, ASSESSED VALUATIONS, FINAL EQUALIZED VALUE.

Cass County, Minnesota, for Taxes for the Year 1955.

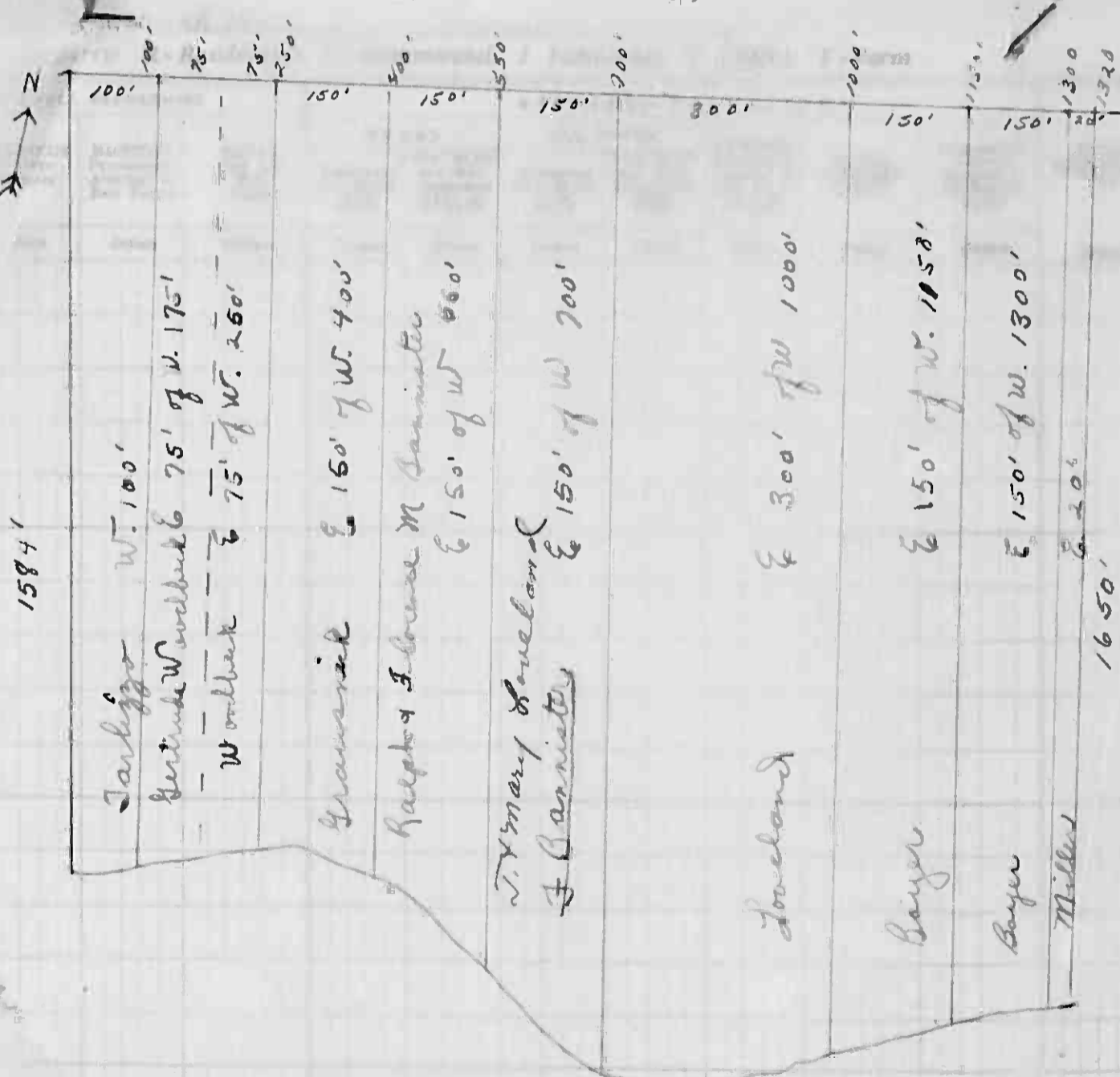
Table with columns: VALUATIONS BY SCHOOL DISTRICTS AS EQUALIZED BY DEPARTMENT OF TAXATION, TAXES, PAID, WHEN PAID, Number of Receipt, March Settlement 1956, June Settlement 1956, November Settlement 1956, Collections to First Monday in January 1957, Delinquent on First Monday in January 1957, Total Delinquent Tax and Penalty, REMARKS.

Assessment Roll and Tax List of Real Property in the Town of...

Indicate T...

Table with columns: IN WHOSE NAME ASSESSED, TO WHOM TRANSFERRED, SUBDIVISION, No. of Acres, No. of Lots, No. of Shares, Ind. Rate, Ind. Tax, Ind. Penalty, LAND, Remarks. Contains handwritten entries for various property owners like Robert Bisson, Bertie D. Woodcock, etc.

LOT 2 - 18-140-81



Cass County, Minnesota, for Taxes for the Year 1955.

Table with columns: SOLD FOR TAXES, VALUATIONS BY SCHOOL DISTRICTS AS EQUALIZED BY DEPARTMENT OF TAXATION, SPECIAL TAXES, TOTAL TAXES, PAID, WHEN PAID, Number of Receipt, March Settlement, June Settlement, November Settlement, Collections to First Monday in January, Delinquency on First Monday in January, Total Delinquent Tax and Penalty, REMARKS. Includes handwritten notes and calculations.

Long Beach, Shady Shores, White Pine Beach, Fairview Beach, 10-arrangement of...

Assessment Roll and Tax List of Real Property in the Town of Hiram, Cass County, Minnesota, for Taxes for the Year 1955.

Form 502 (55) REAL ESTATE TAXES, MINNESOTA

Table with columns: IN WHOSE NAME ASSESSED, TO WHOM TRANSFERRED, DESCRIPTION OF PROPERTY, TRUE AND FULL VALUATIONS, ASSESSED VALUATIONS, FINAL EQUALIZED VALUE. Includes entries for Mrs. Bessie Bray and Ralph & Lorraine S. Hoopman.

Cass County, Minnesota, for Taxes for the Year 1955.

Table with columns: SOLD FOR TAXES, VALIDATIONS BY SCHOOL DISTRICTS AS EQUALIZED BY DEPARTMENT OF TAXATION, Tax including State Homestead, State Tax on Non-Homestead, SPECIAL TAXES, TOTAL TAXES, PAID, WHEN PAID, Number of Receipt, March Settlement 1956, June Settlement 1956, November Settlement 1956, Collections to First Monday in January 1957, Delinquent on First Monday in January 1957, Total Delinquent Tax and Penalty, REMARKS. Includes handwritten tax amounts and payment dates.

Long, Hardy, Hores, White Pine Beach, Rainier Beach, arrangement of 19 of the 14, 1955

Assessment Roll and Tax List of Real Property in the Town of Hiram of Hiram County, Minnesota
*Indicate Type of Property: R-Residential, C-Commercial, I-Industrial, U-Utility, F-Farm

Table with columns: IN WHOSE NAME ASSESSED, TO WHOM TRANSFERRED, SUBDIVISION, ACRES, TRUTH AND FULL VALUATIONS (LAND, BUILDINGS, MACHINERY, TOTAL), ASSESSED VALUATIONS (RURAL, ALL OTHER, MACHINERY, TOTAL), FINAL EQUALIZED VALUE.

Cass County, Minnesota, for Taxes for the Year 1955.

Table with columns: SOLD FOR TAXES, VALUATIONS BY SCHOOL DISTRICTS AS EQUALIZED BY DEPARTMENT OF TAXATION, TAX INCLUDING STATE HOMESTEAD, SPECIAL TAXES, TOTAL TAXES, PAID, WHEN PAID, Number of Receipt, March Settlement, June Settlement, Penalty, November Settlement, Penalty, Collections to First Monday in January 1957, Penalty, Delinquent on First Monday in January 1957, Total Delinquent Tax and Penalty, REMARKS.

Assessment Roll and Tax List of Real Property in the Town of Hiram of Hiram Minnesota
*Indicate Type of Property: R-Residential, C-Commercial, I-Industrial, U-Utility, F-Farm

Table with columns: IN WHOSE NAME ASSESSED, TO WHOM TRANSFERRED, DESCRIPTION OF PROPERTY, TRUE AND FULL VALUATIONS, ASSESSED VALUATIONS, FINAL EQUALIZED VALUE.

Cass County, Minnesota, for Taxes for the Year 1955.

Table with columns: SOLD FOR TAXES, VALUATIONS BY SCHOOL DISTRICTS AS EQUALIZED BY DEPARTMENT OF TAXATION, TAX INCLUDING STATE HOMESTEAD, SPECIAL TAXES, TOTAL TAXES, PAID, WHEN PAID, Number of Receipt, March Settlement 1956, June Settlement 1956, November Settlement 1956, Collections to First Monday in January 1957, Delinquent on First Monday in January 1957, Total Delinquent Tax and Penalty, REMARKS.

Long Beach, Sandy Shores, White Pine Beach, Fairview Beach, e-arrangement of 19 of White Pine

Assessment Roll and Tax List of Real Property in the Town of Hiram

*Indicate Type of Property: R-Residential, C-Commercial, I-Industrial, U-Utility, F-Farm

IN WHOSE NAME ASSESSED	TO WHOM TRANSFERRED	DESCRIPTION OF PROPERTY				No. School District	Indicate Homestead Yes or No	Indicate Agricultural Yes or No	Indicate Type of Property	TRUE AND FULL VALUATIONS			ASSESSED VALUATIONS					Total Assessed Value as Equalized by the Board of Review	FINAL EQUALIZED VALUE			
		SUBDIVISION	Sec. or Lot	Town or Block	Range					Number of Acres of Land	MACHINERY Permanently Attached to Real Estate	RURAL		ALL OTHER			TOTAL ASSESSED VALUE					
												Land Exclusive of Structures and Improvements	BUILDINGS and Other Structures	TOTAL True and Full Value	Homestead	Over \$4,000 and Non-Homestead				Homestead	Over \$4,000 and Non-Homestead	MACHINERY Permanently Attached to Real Estate
															Up to \$4,000 20%	33 1/3%				Up to \$4,000 25%	40%	33 1/3%
State of Minnesota																						
<i>John A. Martin</i>																						
State of Minnesota																						
State of Minnesota																						
State of Minnesota																						
State of Minnesota																						
State of Minnesota																						
State of Minnesota																						
State of Minnesota																						
State of Minnesota																						
State of Minnesota																						

7025

Cass County, Minnesota, for Taxes for the Year 1955.

SOLD FOR TAXES	VALUATIONS BY SCHOOL DISTRICTS AS EQUALIZED BY DEPARTMENT OF TAXATION						Tax including State Homestead	State Tax on Non-Homestead	SPECIAL TAXES	TOTAL TAXES	PAID	WHEN PAID	Number of Receipts	March Settlement 1956	June Settlement 1956	Penalty 1956	November Settlement 1956	Penalty 1956	Collections to First Monday in January 1957	Penalty 1957	Delinquent on First Monday in January 1957	Total Delinquent Tax and Penalty	REMARKS
	District No.	District No.	District No.	District No.	District No.	District No.																	
	Rate	Rate	Rate	Rate	Rate	Rate																	
	Mills	Mills	Mills	Mills	Mills	Mills																	

#129

2640

2640

2640

Long, Shady Shores, White Pine Beach, Minnetonka Beach, Minnetonka

Assessment Roll and Tax List of Real Property in the Town of Hiram of Minnesota

Cass County, Minnesota, for Taxes for the Year 1955.

Form SCD-455, June 1954 Edition, Minnesota Department of Taxation. *Indicate Type of Property: R-Residential, C-Commercial, I-Industrial, U-Utility, F-Farm

Table with columns: IN WHOSE NAME ASSESSED, TO WHOM TRANSFERRED, DESCRIPTION OF PROPERTY, TRUE AND FULL VALUATIONS, ASSESSED VALUATIONS, FINAL EQUALIZED VALUE. Includes entries for Barbara A. & Earl Ford, Marjorie D. Reason, Charles E. & Alveda Graham, Clara F. Fastow, David Raclof, State of Minnesota, George D. & Livona Witham, Ellsworth N. Bates, Ray A. & Genieve L. Bannister.

Table with columns: VALUATIONS BY SCHOOL DISTRICTS AS EQUALIZED BY DEPARTMENT OF TAXATION, Tax Including State Homestead, State Tax on Non-Homestead, SPECIAL TAXES, TOTAL TAXES, PAID, WHEN PAID, Number of Receipt, March Settlement 1956, June Settlement 1956, Penalty, November Settlement 1956, Penalty, Collections to First Monday in January 1957, Penalty, Delinquent on First Monday in January 1957, Total Delinquent Tax and Penalty, REMARKS. Includes entries for Balance Paid, 1st Half Paid, 2nd Half Paid, PAID IN FULL.

Long Beach, Shady Shores, White Pine Beach, Inverlev Beach, The arrangement of 19 of White Pine.

Assessment Roll and Tax List of Real Property in the Town of Hiram, of Hiram County, Minnesota
*Indicate Type of Property: R-Residential, C-Commercial, I-Industrial, U-Utility, F-Farm

IN WHOSE NAME ASSESSED	TO WHOM TRANSFERRED	DESCRIPTION OF PROPERTY				No. School District	Indicate Homestead Yes or No	Indicate Agricultural Yes or No	Indicate Type of Property	TRUE AND FULL VALUATIONS					Total Assessed Value as Equalized by the Board of Review	FINAL EQUALIZED VALUE						
		SUBDIVISION	Sec. or Lot	Town or Block	Rdg.					Number of Acres of Land	LAND Exclusive of Structures and Improvements	BUILDINGS and Other Structures	MACHINERY Permanently Attached to Real Estate	TOTAL True and Full Value			RURAL		ALL OTHER		MACHINERY Permanently Attached to Real Estate	TOTAL ASSESSED VALUE
																	Acres	100ths	Homestead Up to \$4,000 20%	Over \$4,000 and Non-Homestead 33 1/3%		
Everett W. Chadwick & Caroline J. Munro		Lot 1	5	140	31	32	Un	No	Y													
W. C. Smith		Lot 2				3650	Y	No														
Jay Forrest						40	No															
David Roslofs						40	"															
Leon A. Fleischer						40	Y	No														
Clarence & Bessie Kendall						40	No															
Frank M. & Lena M. Closer						40	Y	No				1080 added for 1956 by T. R.		407								
Kate Graves						40	"															
Walter & Hans C. Carlsson						40	"															
"						40	"															
"						40	"															
"						40	"															
State of Minnesota							"															
State of Minnesota							"															
State of Minnesota							"															
State of Minnesota							"															
						46850																

Gass County, Minnesota, for Taxes for the Year 1955.

SOLD FOR TAXES	VALUATIONS BY SCHOOL DISTRICTS AS EQUALIZED BY DEPARTMENT OF TAXATION						Tax Including State Homestead	State Tax on Non-Homestead	SPECIAL TAXES	TOTAL TAXES	PAID	WHEN PAID	Number of Receipt	March Settlement 1956	June Settlement 1956	Penalty	November Settlement 1956	Penalty	Collections to First Monday in January 1957	Penalty	Delinquent on First Monday in January 1957	Total Delinquent Tax and Penalty	REMARKS
	District No.	District No.	District No.	District No.	District No.	District No.																	
	Rate	Rate	Rate	Rate	Rate	Rate																	
1						47	962	24	986		1 PAID IN FULL APR 23 1956 5559												
2						101	2068		2068		2nd Half Paid OCT 19 1956 14712												
3						54	1106	28	1134		1st Half Paid MAY 9 1956 5995												1134
4						54	1106	28	1134														1134
5																							
6						175	3582		3582		6 PAID IN FULL APR 28 1956 5854												
7						47	962	24	986		2nd Half Paid AUG 8 1956 13517												
8						407	8330		8330		1st Half Paid APR 9 1956 4769												493
9						72	1474		1474		8 PAID IN FULL MAY 19 1956 6375												
10																							
11						82	1678		1678		11 2nd Half Paid OCT 22 1956												
12						170	3480		3480		1st Half Paid MAY 28 1956												
13						29	594		594		12 2nd Half Paid OCT 22 1956												
14						29	594		594		1st Half Paid MAY 28 1956												
15																							
16																							
17																							
18																							
19																							
20																							
						1065	25936	104	26040														
						2021																	
						1267																	

Long Beach
Snady Shores
White Pine Beach
Fairview Beach
arrangement of
19 of White Pine

Assessment Roll and Tax List of Real Property in the Town of Hiawatha, Cass County, Minnesota

* Indicate Type of Property: R-Residential, C-Commercial, I-Industrial, U-Utility, F-Farm

Table with columns for IN WHOSE NAME ASSESSED, TO WHOM TRANSFERRED, DESCRIPTION OF PROPERTY (SUBDIVISION, Acres, 100th), TRUE AND FULL VALUATIONS (LAND, BUILDINGS, MACHINERY, TOTAL), ASSESSED VALUATIONS (RURAL, ALL OTHER, MACHINERY, TOTAL ASSESSED), Total Assessed Value as Equalized by the Board of Review, and FINAL EQUALIZED VALUE.

Cass County, Minnesota, for Taxes for the Year 1955.

Table with columns for VALUATIONS BY SCHOOL DISTRICTS AS EQUALIZED BY DEPARTMENT OF TAXATION (District No., Rate), Tax Including State Homestead, State Tax on Non-Homestead, SPECIAL TAXES, TOTAL TAXES, PAID, WHEN PAID, Number of Receipt, March Settlement 1955, June Settlement 1955, November Settlement 1955, Collections to First Monday in January 1957, Delinquent on First Monday in January 1957, Total Delinquent Tax and Penalty, and REMARKS.

Assessment Roll and Tax List of Real Property in the Town of Hiram, Cass County, Minnesota, for Taxes for the Year 1955.

Table with columns for IN WHOSE NAME ASSESSED, TO WHOM TRANSFERRED, DESCRIPTION OF PROPERTY, TRUE AND FULL VALUATIONS, ASSESSED VALUATIONS, VALUATIONS BY SCHOOL DISTRICTS AS EQUALIZED BY DEPARTMENT OF TAXATION, TAX INCLUDING STATE HOMESTEAD, SPECIAL TAXES, TOTAL TAXES, PAID, WHEN PAID, Number of Receipt, March Settlement 1956, June Settlement 1956, Penalty, November Settlement 1956, Penalty, Collections to First Monday in January 1957, Penalty, Delinquent on First Monday in January 1957, Total Delinquent Tax and Penalty, REMARKS.

Assessment Roll and Tax List of Real Property in the Town of Hiram, Cass County, Minnesota, for Taxes for the Year 1955.

Table with columns: IN WHOSE NAME ASSESSED, TO WHOM TRANSFERRED, DESCRIPTION OF PROPERTY, TRUE AND FULL VALUATIONS (RURAL, ALL OTHER, MACHINERY), and FINAL EQUALIZED VALUE.

Cass County, Minnesota, for Taxes for the Year 1955.

Table with columns: VALUATIONS BY SCHOOL DISTRICTS AS EQUALIZED BY DEPARTMENT OF TAXATION, Tax Including State Homestead, State Tax on Non-Homestead, SPECIAL TAXES, TOTAL TAXES, PAID, WHEN PAID, Number of Receipts, March Settlement 1956, June Settlement 1956, November Settlement 1956, Collections to First Monday in January 1957, Delinquent on First Monday in January 1957, Total Delinquent Tax and Penalty, REMARKS.

Assessment Roll and Tax List of Real Property in the Town of *Hiram* of *Hiram*

*Indicate Type of Property: R-Residential, C-Commercial, I-Industrial, U-Utility, F-Farm

Table with columns: IN WHOSE NAME ASSESSED, TO WHOM TRANSFERRED, SUBDIVISION, TRUE AND FULL VALUATIONS (LAND, BUILDINGS, MACHINERY, TOTAL), ASSESSED VALUATIONS (RURAL, ALL OTHER, MACHINERY), TOTAL ASSESSED VALUE, FINAL EQUALIZED VALUE.

Cass County, Minnesota, for Taxes for the Year 1955.

Table with columns: SOLD FOR TAXES, VALUATIONS BY SCHOOL DISTRICTS AS EQUALIZED BY DEPARTMENT OF TAXATION, Tax including State Homestead, State Tax on Non-Homestead, SPECIAL TAXES, TOTAL TAXES, PAID, WHEN PAID, Number of Receipt, March Settlement 1956, June Settlement 1956, November Settlement 1956, Penalty, Collections to First Monday in January 1957, Delinquent on First Monday in January 1957, Total Delinquent Tax and Penalty, REMARKS.

Long Beach, Sandy Shores, White Pine Beach, Rainview Beach, arrangement of 19 of the place

Assessment Roll and Tax List of Real Property in the Town of *Hiram* of *Hiram*, Indicate Type of Property: R-Residential, C-Commercial, I-Industrial, U-Utility, F-Farm

Table with columns: IN WHOSE NAME ASSESSED, TO WHOM TRANSFERRED, DESCRIPTION OF PROPERTY, TRUE AND FULL VALUATIONS, ASSESSED VALUATIONS, and FINAL EQUALIZED VALUE.

Cass County, Minnesota, for Taxes for the Year 1955.

Table with columns: SOLD FOR TAXES, VALUATIONS BY SCHOOL DISTRICTS AS EQUALIZED BY DEPARTMENT OF TAXATION, SPECIAL TAXES, TOTAL TAXES, PAID, WHEN PAID, and REMARKS.

Assessment Roll and Tax List of Real Property in the Town of Hiram,
*Indicate Type of Property: R-Residential, C-Commercial, I-Industrial, U-Utility, F-Farm

IN WHOSE NAME ASSESSED	TO WHOM TRANSFERRED	DESCRIPTION OF PROPERTY				No. School District	Indicate Homestead Tax or No	Indicate Aft. Total Tax or No	Indicate Type of Property	TRUE AND FULL VALUATIONS					ASSESSED VALUATIONS					Total Assessed Value as Equalized by the Board of Review	FINAL EQUALIZED VALUE		
		Subdivision	Sec. or Lot	Town or Block	Rdg.					Number of Acres of Land	LAND Exclusive of Structures and Improvements	BUILDINGS and Other Structures	MACHINERY Permanently Attached to Real Estate	TOTAL True and Full Value	RURAL		ALL OTHER		MACHINERY Permanently Attached to Real Estate			TOTAL ASSESSED VALUE	
					Acres	100ths			Dollars	Dollars	Dollars	Dollars	Dollars	Dollars	Dollars	Dollars	Dollars	Dollars	Dollars	Dollars	Dollars	Dollars	
State of Minnesota		NE 1/4 of NE 1/4			32	140.31		U															
State of Minnesota		NW 1/4 of NE 1/4																					
Dorothy Marie Hely		SW 1/4 of NE 1/4 Lot 2				35		Y															
"		SE 1/4 of NE 1/4 Lot 1				18		"															
Dorothy Marie Hely		NE 1/4 of SE 1/4 Lot 3				15		Y															
State of Minnesota		SW 1/4 of SE 1/4 Lot 4																					
State of Minnesota		SE 1/4 of SE 1/4 Lot 5																					
						68																	

Cass County, Minnesota, for Taxes for the Year 1955.

SOLD FOR TAXES	VALUATIONS BY SCHOOL DISTRICTS AS EQUALIZED BY DEPARTMENT OF TAXATION						Tax Including State Homestead	State Tax on Non-Homestead	SPECIAL TAXES	TOTAL TAXES	PAID	WHEN PAID	Number of Receipt	March Settlement 1956	June Settlement 1956	Penalty	November Settlement 1956	Penalty	Collection to First Monday in January 1957	Penalty	Delinquent on First Monday in January 1957	Total Delinquent Tax and Penalty	REMARKS
	District No.	District No.	District No.	District No.	District No.	District No.																	
	Rate	Rate	Rate	Rate	Rate	Rate																	

Long Beach, Sandy Shores, White Pine Beach, Halverson Beach, and arrangements of...

Assessment Roll and Tax List of Real Property in the Town of Hiram, Cass County, Minnesota, for Taxes for the Year 1955.

Table with columns: IN WHOSE NAME ASSESSED, TO WHOM TRANSFERRED, DESCRIPTION OF PROPERTY, TRUE AND FULL VALUATIONS (LAND, BUILDINGS, MACHINERY, TOTAL), ASSESSED VALUATIONS (RURAL, ALL OTHER, MACHINERY, TOTAL ASSESSED), Total Assessed Value, FINAL EQUALIZED VALUE.

Cass County, Minnesota, for Taxes for the Year 1955.

Table with columns: SOLD FOR TAXES, VALUATIONS BY SCHOOL DISTRICTS AS EQUALIZED BY DEPARTMENT OF TAXATION, Tax including State Homestead, State Tax on Non-Homestead, SPECIAL TAXES, TOTAL TAXES, PAID, WHEN PAID, Number of Receipt, March Settlement, June Settlement, November Settlement, Collections to First Monday in January, Delinquent on First Monday in January, Total Delinquent Tax and Penalty, REMARKS.

44350

Handwritten calculations: 18, 186, 204, 780, 323, 6978, 11753, 166, 1124.

902 3001 5597

1824

Long Beach, Shady Shores, White Pine Beach, Fairview Beach, 19th St. White Pine

Assessment Roll and Tax List of Real Property in the Town of Hiram, of Hiram, Minnesota. *Indicate Type of Property: R-Residential, C-Commercial, I-Industrial, U-Utility, F-Farm

Table with columns: IN WHOSE NAME ASSESSED, TO WHOM TRANSFERRED, DESCRIPTION OF PROPERTY, TRUE AND FULL VALUATIONS, ASSESSED VALUATIONS, FINAL EQUALIZED VALUE. Includes handwritten entries for Richard Salminen and various subdivision descriptions.

40

Cass County, Minnesota, for Taxes for the Year 1955.

Table with columns: VALUATIONS BY SCHOOL DISTRICTS AS EQUALIZED BY DEPARTMENT OF TAXATION, Tax including State Homestead, State Tax on Non-Homestead, SPECIAL TAXES, TOTAL TAXES, PAID, WHEN PAID, Number of Receipt, March Settlement 1956, June Settlement 1956, November Settlement 1956, Collections to First Monday in January 1957, Delinquent on First Monday in January 1957, Total Delinquent Tax and Penalty, REMARKS. Includes handwritten tax amounts and settlement dates.

67

1372 34

1406

1406

Long Beach, Stady Shores, White Pine Beach, Plainview Beach, re-arrangement of 1919 of White Pine Beach

Assessment Roll and Tax List of Real Property in the Town of Hiram

Indicate Type of Property: R-Residential, C-Commercial, I-Industrial, U-Utility, F-Farm

Cass County, Minnesota, for Taxes for the Year 1955.

Table with columns for IN WHOSE NAME ASSESSED, DESCRIPTION OF PROPERTY, TRUE AND FULL VALUATIONS, ASSESSED VALUATIONS, VALUATIONS BY SCHOOL DISTRICTS AS EQUALIZED BY DEPARTMENT OF TAXATION, TAXES, PAID, WHEN PAID, Number of Receipt, March Settlement, June Settlement, November Settlement, Collections to First Monday in January 1957, Delinquent on First Monday in January 1957, Total Delinquent Tax and Penalty, REMARKS.

Assessment Roll and Tax List of Real Property in the Town of Oshtemo of Wisconsin,
 *Indicate Type of Property: R-Residential, C-Commercial, I-Industrial, U-Utility, F-Farm

IN WHOSE NAME ASSESSED	TO WHOM TRANSFERRED	DESCRIPTION OF PROPERTY				No. School District	Indicate Homestead Yes or No	Indicate Agricultural Yes or No	Indicate Type of Property	TRUE AND FULL VALUATIONS					Total Assessed Value as Equalized by the Board of Review	FINAL EQUALIZED VALUE						
		SUBDIVISION	Sec. or Lot	Town or Block	Reg. Acres					Number of Acres of Land	LAND Exclusive of Structures and Improvements	BUILDINGS and Other Structures	MACHINERY Permanently Attached to Real Estate	TOTAL True and Full Value			RURAL		ALL OTHER		MACHINERY Permanently Attached to Real Estate 33 1/3 %	TOTAL ASSESSED VALUE
																	20%	33 1/3 %	25%	40%		
Burton C. Ford		Long Beach	1	3		Un	No	No														
Jean E & Rose D. Sigurdson		Lot 2 + 3 Block 3 of Subd 1	2																			
Ethelyn		Part of Blk 3 East of Long Beach																				
Joseph W. & Louise J. Reed		Part of Blk 3 East of Long Beach																				
		Part of Blk 3 East of Long Beach																				
		Part of Blk 3 East of Long Beach																				
F. C. Knight		Block 14 Vacated	6																			
J. E. Knight		Outlot A	7																			
			8																			
			9																			
			10																			
		Note: Blk 4 Vacated	11																			
		Blk 19	12																			
		Blk 14	13																			
		also street	14																			
			15																			
			16																			
			17																			
			18																			
			19																			
			20																			

Cass County, Minnesota, for Taxes for the Year 1955.

SOLD FOR TAXES	VALUATIONS BY SCHOOL DISTRICTS AS EQUALIZED BY DEPARTMENT OF TAXATION						Tax Including State Homestead	State Tax on Non-Homestead	SPECIAL TAXES	TOTAL TAXES	PAID	WHEN PAID	Number of Receipt	March Settlement 1956	June Settlement 1956	November Settlement 1956	Penalty	Collections to First Monday in January 1957	Penalty	Delinquent on First Monday in January 1957	Total Delinquent Tax and Penalty	REMARKS
	District No.	District No.	District No.	District No.	District No.	District No.																
	Rate	Rate	Rate	Rate	Rate	Rate																
1							1.80	04	1.84		PAID	OCT 3 1 1956	16890									
2							3.82	08	3.90		PAID IN FULL	MAY 3 1 1956	5899	3.90								
3							1.80	04	1.84		PAID IN FULL	MAY 3 1 1956	1380	1.84								
4																						
5																						
6																						
7							1.80	04	1.84		PAID IN FULL	MAY 3 1 1956	1383	1.84								
8																						
9																						
10																						
11																						
12																						
13																						
14																						
15																						
16																						
17																						
18																						
19																						
20																						
							71			70	9.22	20	9.42	860	92							

arrangement of 10
 of White Pine 389

Assessment Roll and Tax List of Real Property in the Town of Hiram

*Indicate Type of Property: R-Residential, C-Commercial, I-Industrial, U-Utility, F-Farm

Cass County, Minnesota, for Taxes for the Year 1955.

IN WHOSE NAME ASSESSED	TO WHOM TRANSFERRED	SUBDIVISION	DESCRIPTION OF PROPERTY			No. School District	Indicate Home-estead or No.	Indicate Age of Property	TRUE AND FULL VALUATIONS						Total Assessed Value as Equalized by the Board of Review	FINAL EQUALIZED VALUE									
			Sec. of Lot	Town or Block	Rag				Number of Acres of Land	LAND Excludes of Structures and Improvements	BUILDINGS and Other Structures	MACHINERY Permanently Attached to Real Estate	TOTAL True and Full Value	RURAL			ALL OTHER		MACHINERY Permanently Attached to Real Estate	TOTAL ASSESSED VALUE					
														Acres			100ths	Dollars			Dollars	Dollars	Dollars	Dollars	Dollars
																		Homestead Up to \$4,000 20%			Over \$4,000 and Non-Homestead 33 1/3%	Homestead Up to \$4,000 25%	Over \$4,000 and Non-Homestead 40%	33 1/3%	
Shady Shores																									
George C. Brandt		Lot 3 - Sec. 11-140-31																							
"																									
"																									
"																									
"																									
J. J. + June Bryngelson																									
"																									
W. C. + Lucy G. Hunt 1/2 + Rebecca Hunt 1/2																									
George L. Tolson + Mervin L. Tolson																									
"																									
Edwin B. + Caroline Stallard		was of 10																							
"																									
W. D. + Amy Kohl																									
"																									
John A. Wilkinson																									
Helen Jameson Bateman + Harold Jameson																									
Helen Jameson Bateman																									
Anne E. + Walter Jameson + Helen Bateman																									
Donald W. + Della B. Gray																									
Donald W. + Della B. Gray																									

SOLD FOR TAXES	VALUATIONS BY SCHOOL DISTRICTS AS EQUALIZED BY DEPARTMENT OF TAXATION						Tax Including State Homestead	State Tax on Non-Homestead	SPECIAL TAXES	TOTAL TAXES	PAID	WHEN PAID	Number of Receipt	March Settlement 1956	June Settlement 1956	Penalty 1956	November Settlement 1956	Penalty 1956	Collections to First Monday in January 1957	Penalty 1957	Delinquent on First Monday in January 1957	Total Delinquent Tax and Penalty	REMARKS		
	District No.	District No.	District No.	District No.	District No.	District No.																		District No.	District No.
	Rate	Rate	Rate	Rate	Rate	Rate																		Rate	Rate
	Mills	Mills	Mills	Mills	Mills	Mills																		Mills	Mills

Page 101 Valley Summit View Summit Bear White Pine Beach Rainier Beach... 19 of White Pine Beach

Assessment Roll and Tax List of Real Property in the Town of Hiram, Cass County, Minnesota, for Taxes for the Year 1955. *Indicate Type of Property: R-Residential, C-Commercial, I-Industrial, U-Utility, F-Farm

Long Beach

Shady Shores

Table with columns: IN WHOSE NAME ASSESSED, TO WHOM TRANSFERRED, SUBDIVISION, DESCRIPTION OF PROPERTY, TRUE AND FULL VALUATIONS (LAND, BUILDINGS, MACHINERY, TOTAL TRUG AND FULL VALUE, RURAL, ALL OTHER, MACHINERY PERMANENTLY ATTACHED TO REAL ESTATE, TOTAL ASSESSED VALUE, Total Assessed Value as Equalized by the Board of Review, FINAL EQUALIZED VALUE).

Cass County, Minnesota, for Taxes for the Year 1955.

Table with columns: SOLD FOR TAXES, VALUATIONS BY SCHOOL DISTRICTS AS EQUALIZED BY DEPARTMENT OF TAXATION, Tax including State Homestead, State Tax on Non-Homestead, SPECIAL TAXES, TOTAL TAXES, PAID, WHEN PAID, Number of Receipt, March Settlement 1956, June Settlement 1956, Penalty, November Settlement 1956, Penalty, Collections to First Monday in January 1957, Penalty, Delinquent on First Monday in January 1957, Total Delinquent Tax and Penalty, REMARKS.

Vertical text on the right edge of the page, including 'Subject Beach White Pine Beach' and 'arrangement of Lot 19 of White Pine Beach'.

Assessment Roll and Tax List of Real Property in the Town of Miami of Miami

*Indicate Type of Property: R-Residential, C-Commercial, I-Industrial, U-Utility, F-Farm

Cass County, Minnesota, for Taxes for the Year 1955.

Long Beach Shady Shores

Table with columns: IN WHOSE NAME ASSESSED, TO WHOM TRANSFERRED, SUBDIVISION, DESCRIPTION OF PROPERTY, TRUE AND FULL VALUATIONS, ASSESSED VALUATIONS, VALUATIONS BY SCHOOL DISTRICTS AS EQUALIZED BY DEPARTMENT OF TAXATION, TAXES, PAID, WHEN PAID, Number of Receipt, March Settlement 1956, June Settlement 1956, November Settlement 1956, Collections to First Monday in January 1957, Delinquent on First Monday in January 1957, Total Delinquent Tax and Penalty, REMARKS.

Lots 58-110 Vacated

* 213 871 1084 24352 444 24796

2608 22188

Shady Shores Pine Beach Fairview Beach 19 of White Pine Beach

Assessment Roll and Tax List of Real Property in the Town of Nissau
*Indicate Type of Property: R-Residential, C-Commercial, I-Industrial, U-Utility, F-Farm

Table with columns: IN WHOSE NAME ASSESSED, TO WHOM TRANSFERRED, SUBDIVISION (White Pine Beach), TRUE AND FULL VALUATIONS (LAND, BUILDINGS, MACHINERY, TOTAL), ASSESSED VALUATIONS (RURAL, ALL OTHER, MACHINERY, TOTAL), and FINAL EQUALIZED VALUE.

Cass County, Minnesota, for Taxes for the Year 1955.

Table with columns: SOLD FOR TAXES, VALUATIONS BY SCHOOL DISTRICTS AS EQUALIZED BY DEPARTMENT OF TAXATION, TAX INCLUDING STATE HOMESTEAD, STATE TAX ON NON-HOMESTEAD, SPECIAL TAXES, TOTAL TAXES, PAID, WHEN PAID, Number of Receipt, March Settlement 1956, June Settlement 1956, Penalty, November Settlement 1956, Penalty, Collections to First Monday in January 1957, Penalty, Delinquent on First Monday in January 1957, Total Delinquent Tax and Penalty, REMARKS.

Long Beach, Shady Shores, White Pine Beach

Charlton Beach, Beaver Shoars, Sunset View, Sunset View, Subset Beach, Rainwater Beach, 19 of White Pine Beach

Assessment Roll and Tax List of Real Property in the Town of Nissam
*Indicate Type of Property: R-Residential, C-Commercial, I-Industrial, U-Utility, F-Farm

Form 30 (55) - MINNAPAC COMPANY, MINNEAPOLIS

Table with columns: IN WHOSE NAME ASSESSED, TO WHOM TRANSFERRED, SUBDIVISION (Plainview Beach), DESCRIPTION OF PROPERTY, TRUE AND FULL VALUATIONS, ASSESSED VALUATIONS (RURAL, ALL OTHER, MACHINERY), TOTAL ASSESSED VALUE, FINAL EQUALIZED VALUE.

Long Beach, Shady Shores, White Pine Beach, Plainview Beach

Cass County, Minnesota, for Taxes for the Year 1955.

Table with columns: VALUATIONS BY SCHOOL DISTRICTS AS EQUALIZED BY DEPARTMENT OF TAXATION, Tax including State Homestead, State Tax on Non-Homestead, SPECIAL TAXES, TOTAL TAXES, PAID, WHEN PAID, Number of Receipt, March Settlement, June Settlement, November Settlement, Collections to First Monday in January 1957, Delinquent on First Monday in January 1957, Total Delinquent Tax and Penalty, REMARKS.

Peaceful, Shady Shores, Sunnyside Beach, Chariton Beach, Peaceful, Shady Shores, Sunnyside Beach, Chariton Beach, Peaceful, Shady Shores, Sunnyside Beach, Chariton Beach, Peaceful, Shady Shores, Sunnyside Beach, Chariton Beach

* 47
542
959
21548 260
21828

21828

Assessment Roll and Tax List of Real Property in the Town of Hiram, of Minnesota,
Indicate Type of Property: R-Residential, C-Commercial, I-Industrial, U-Utility, F-Farm

Table with columns: IN WHOSE NAME ASSESSED, TO WHOM TRANSFERRED, SUBDIVISION, DESCRIPTION OF PROPERTY, TRUE AND FULL VALUATIONS, ASSESSED VALUATIONS, FINAL EQUALIZED VALUE.

Cass County, Minnesota, for Taxes for the Year 1955.

Table with columns: VALUATIONS BY SCHOOL DISTRICTS AS EQUALIZED BY DEPARTMENT OF TAXATION, TAXES, PAID, WHEN PAID, Number of Receipt, March Settlement, June Settlement, November Settlement, Collections to First Monday in January, Delinquent on First Monday in January, Total Delinquent Tax and Penalty, REMARKS.

Long Beach, Shady Shores, White Pine Beach, Plainview Beach, e-Arrangement of lot of White Pine Beach

Charlton Beach, Peaceful Shores, Sagsack Beach

Assessment Roll and Tax List of Real Property in the Town of Niham, of Niham County, Missouri.

*Indicate Type of Property: R-Residential, C-Commercial, I-Industrial, U-Utility, F-Farm

Table with columns: IN WHOSE NAME ASSESSED, TO WHOM TRANSFERRED, SUBDIVISION, Sec. or Lot, Town or Block, King, Number of Acres of Land, No. School District, Indicate Homestead, Indicate Agricultural, Indicate Property, TRUE AND FULL VALUATIONS (LAND, BUILDINGS, MACHINERY, TOTAL), ASSESSED VALUATIONS (RURAL, ALL OTHER, MACHINERY, TOTAL ASSESSED), Total Assessed Value as Equalized by the Board of Review, FINAL EQUALIZED VALUE.

Cass County, Minnesota, for Taxes for the Year 1955.

Table with columns: SOLD FOR TAXES, VALUATIONS BY SCHOOL DISTRICTS AS EQUALIZED BY DEPARTMENT OF TAXATION, Tax Including State Homestead, State Tax on Non-Homestead, SPECIAL TAXES, TOTAL TAXES, PAID, WHEN PAID, Number of Receipt, March Settlement 1956, June Settlement 1956, Penalty, November Settlement 1956, Penalty, Collections to First Monday in January 1957, Penalty, Delinquent on First Monday in January 1957, Total Delinquent Tax and Penalty, REMARKS.

Elmhurst, Shady Shores, White Pine Beach, Plainview Beach, Arrangement of Lot of White Pine Beach

Peaceful Valley, Hillmond, Sunset Beach, Chariton Beach, Peaceful Shores, Peacack Beach

Assessment Roll and Tax List of Real Property in the Town of Niam

*Indicate Type of Property: R-Residential, C-Commercial, I-Industrial, U-Utility, F-Farm

Table with columns: IN WHOSE NAME ASSESSED, TO WHOM TRANSFERRED, SUBDIVISION, Sec. of Lot, Town or Block, Reg., Number of Acres of Land, TRUE AND FULL VALUATIONS (LAND, BUILDINGS, MACHINERY, TOTAL), ASSESSED VALUATIONS (RURAL, ALL OTHER, MACHINERY, TOTAL), Total Assessed Value as Equalized by the Board of Review, FINAL EQUALIZED VALUE.

Cass County, Minnesota, for Taxes for the Year 1955.

Table with columns: SOLD FOR TAXES, VALUATIONS BY SCHOOL DISTRICTS AS EQUALIZED BY DEPARTMENT OF TAXATION, Tax including State Homestead, State Tax on Non-Homestead, SPECIAL TAXES, TOTAL TAXES, PAID, WHEN PAID, Number of Receipt, March Settlement 1956, June Settlement 1956, Penalty, November Settlement 1956, Penalty, Collections to First Monday in January 1957, Penalty, Delinquent on First Monday in January 1957, Total Delinquent Tax and Penalty, REMARKS.

Elmhurst, Shady Shore, Ritzmond, Sunset View, Sunset Beach, White Pine Beach, Plainview Beach, Arrangement of lot of White Pine Beach

Peaceful Valley, Sunset View, Sunset Beach, Chariton Beach, Peaceful Shores, Kenack Hatchery Beach

Assessment Roll and Tax List of Real Property in the Town of Hilans,
 *Indicate Type of Property: R-Residential, C-Commercial, I-Industrial, U-Utility, F-Farm

IN WHOSE NAME ASSESSED	TO WHOM TRANSFERRED	DESCRIPTION OF PROPERTY					TRUE AND FULL VALUATIONS													FINAL EQUALIZED VALUE		
		SUBDIVISION	Sec. of Lot	Town or Block	Range	Number of Acres of Land	LAND Exclusive of Structures and Improvements	BUILDINGS and Other Structures	MACHINERY Permanently Attached to Real Estate	TOTAL True and Full Value	RURAL				ALL OTHER				MACHINERY Permanently Attached to Real Estate		TOTAL ASSESSED VALUE	Total Assessed Value as Equalized by the Board of Review
											Homestead	Over \$4,000 and Non-Homestead	Homestead	Over \$4,000 and Non-Homestead	Homestead	Over \$4,000 and Non-Homestead	Homestead	Over \$4,000 and Non-Homestead				
											Up to \$4,000 20%	33 1/3%	Up to \$4,000 25%	40%	Up to \$4,000 33 1/3%	40%						
Sunset Beach																						
(Lot 2, Sec. 14-31, Lot 2, Sec. 14-140-31)																						
R. E. & Selma N. Wood		1	1																			
"	"	2	2																			
"	"	3	3																			
"	"	4	4																			
"	"	5	5																			
"	"	6	6																			
"	"	7	7																			
"	"	8	8																			
Herbert F. & Lenora K. Garbisch		9	9																			
"	"	10	10																			
"	"	11	11																			
"	"	12	12																			
		13																				
		14																				
		15																				
		16																				
		17																				
		18																				
		19																				
		20																				

Cass County, Minnesota, for Taxes for the Year 1955.

SOLD FOR TAXES	VALUATIONS BY SCHOOL DISTRICTS AS EQUALIZED BY DEPARTMENT OF TAXATION						Tax includes State Homestead	State Tax on Non-Homestead	SPECIAL TAXES	TOTAL TAXES	PAID	WHEN PAID	Number of Receipt	March Settlement 1956	June Settlement 1956	Penalty	November Settlement 1956	Penalty	Collections to First Monday in January 1957	Penalty	Delinquent on First Monday in January 1957	Total Delinquent Tax and Penalty	REMARKS
	District No.	District No.	District No.	District No.	District No.	District No.																	
	Rate	Rate	Rate	Rate	Rate	Rate																	
	Mills	Mills	Mills	Mills	Mills	Mills																	
1						17		382	08		390	1	Balance Paid	OCT 31 1956									
2						100		2246	52		2298	2	Balance Paid	OCT 31 1956									
3						129		2898	66		2964	3	Balance Paid	OCT 31 1956									
4						113		2538	58		2596	4	Balance Paid	OCT 31 1956									
5						17		382	08		390	5	Balance Paid	OCT 31 1956	7819	7387	7387						
6						108		2426	56		2482	6	Balance Paid	OCT 31 1956	15778								
7						90		2022	46		2068	7	Balance Paid	OCT 31 1956									
8						69		1550	36		1586	8	Balance Paid	OCT 31 1956									
9						17		382	08		390	9	PAID BY FULL	MAY 31 1956								390	
10						417		9370	216		9586	10	PAID BY FULL	MAY 31 1956	10410							9586	
11						17		382	08		390	11	PAID BY FULL	MAY 31 1956								390	
12						17		382	08		390	12	PAID BY FULL	MAY 31 1956								390	
13																							
14																							
15																							
16																							
17																							
18																							
19																							
20																							
						1111		24960	570		25530											18143	7387

Assessment Roll and Tax List of Real Property in the Town of Hiram, Cass County, Minnesota, for Taxes for the Year 1955.

Table with columns: IN WHOSE NAME ASSESSED, TO WHOM TRANSFERRED, SUBDIVISION, DESCRIPTION OF PROPERTY, TRUE AND FULL VALUATIONS, ASSESSED VALUATIONS, FINAL EQUALIZED VALUE.

Cass County, Minnesota, for Taxes for the Year 1955.

Table with columns: SOLD FOR TAXES, VALUATIONS BY SCHOOL DISTRICTS AS EQUALIZED BY DEPARTMENT OF TAXATION, SPECIAL TAXES, TOTAL TAXES, PAID, WHEN PAID, Number of Receipt, March Settlement 1956, June Settlement 1956, November Settlement 1956, Collections to First Monday in January 1957, Delinquent on First Monday in January 1957, Total Delinquent Tax and Penalty, REMARKS.

Blmurst, Shor, Ritmond, Sunset View, 1st, Charlton Beach, Peaceful Shores, Kossack Beach

Blmurst, Shor, Ritmond, Sunset View, 1st, Charlton Beach, Peaceful Shores, Kossack Beach

Assessment Roll and Tax List of Real Property in the Town of *Niame* of *Niame*

*Indicate Type of Property: R-Residential, C-Commercial, I-Industrial, U-Utility, F-Farm

Table with columns: IN WHOSE NAME ASSESSED, TO WHOM TRANSFERRED, SUBDIVISION (Sunset Beach), TRUK AND FULL VALUATIONS, ASSESSED VALUATIONS, and FINAL EQUALIZED VALUE.

Cass County, Minnesota, for Taxes for the Year 1955.

Table with columns: SOLD FOR TAXES, VALUATIONS BY SCHOOL DISTRICTS AS EQUALIZED BY DEPARTMENT OF TAXATION, Tax including State Homestead, State Tax on Non-Homestead, SPECIAL TAXES, TOTAL TAXES, PAID, WHEN PAID, Number of Receipt, March Settlement 1956, June Settlement 1956, Penalty, November Settlement 1956, Collections to First Monday in January 1957, Delinquent on First Monday in January 1957, Total Delinquent Tax and Penalty, REMARKS.

Vertical text on the left margin: Elmhurst, Shor Fitzmond, Beach, Sunset View, 1st, Charlton Beach, Peaceful Shores, Hansack, White Pine Beach, Plainview Beach, White Pine Beach, Element of lot.

Vertical text on the right margin: 66, Hansack, Peaceful Shores, Charlton Beach, 1st, Sunset View, Beach.

Assessment Roll and Tax List of Real Property in the *Town* of *Nevas*,
 *Indicate Type of Property: R-Residential, C-Commercial, I-Industrial, U-Utility, F-Farm

Form 30 (1-15-55)

IN WHOSE NAME ASSESSED	TO WHOM TRANSFERRED	DESCRIPTION OF PROPERTY				No. School District	Indicate Homestead Yes or No	Indicate Agricultural Yes or No	Indicate Type of Property	TRUE AND FULL VALUATIONS				ASSESSED VALUATIONS					FINAL EQUALIZED VALUE		
		SUBDIVISION	Sec. or Lot	Town or Block	Number of Acres of Land					LAND Exclusive of Structures and Improvements	BUILDINGS and Other Structures	MACHINERY Permanently Attached to Real Estate	TOTAL True and Full Value	RURAL		ALL OTHER		MACHINERY Permanently Attached to Real Estate		TOTAL ASSESSED VALUE	Total Assessed Value as Equalized by the Board of Review
														Acres	100ths	Homestead Up to \$4,000 20%	Over \$4,000 and Non-Homestead 33 1/3%				
		Sunset Beach																			
A. E. & Selma N. Wasch				Outlot A 3		No	Yes														
The Lundtke Company				Bliss Part sold																	
Richard E. LaFisch				part of Outlot B																	
The Lundtke Company				" C																	

Cass County, Minnesota, for Taxes for the Year 1955.

SOLD FOR TAXES	VALUATIONS BY SCHOOL DISTRICTS AS EQUALIZED BY DEPARTMENT OF TAXATION						Tax Including State Homestead	State Tax on Non-Homestead	SPECIAL TAXES	TOTAL TAXES	PAID	WHEN PAID	Number of Receipt	March Settlement 1955	June Settlement 1955	Penalty	November Settlement 1955	Penalty	Collections to First Monday in January 1957	Penalty	Delinquent on First Monday in January 1957	Total Delinquent Tax and Penalty	REMARKS
	District No.	District No.	District No.	District No.	District No.	District No.																	
	Dollars	Dollars	Dollars	Dollars	Dollars	Dollars	\$ cts.	\$ cts.	\$ cts.	\$ cts.		Month Day Year	\$ cts.	\$ cts.	\$ cts.	\$ cts.	\$ cts.	\$ cts.	\$ cts.	\$ cts.	\$ cts.	\$ cts.	
						125	2968	74		3042													
						8	164	04		168													
						8	164	04		268													
						14	286	08		294													
											175	3582	90		3672								

Shore View
 Sunset Beach
 1st A Charlton Beach
 Peaceful Shores
 Mansack Beach
 Sunset Beach
 La Pina Beach
 Plainview Beach
 White Pine
 Sunset Beach
 Shor Aitzmond
 Elmhurst

Shore View
 Sunset Beach
 1st A Charlton Beach
 Peaceful Shores
 Mansack Beach
 Sunset Beach
 La Pina Beach
 Plainview Beach
 White Pine
 Sunset Beach
 Shor Aitzmond
 Elmhurst

Assessment Roll and Tax List of Real Property in the Town of Hiram, Cass County, Minnesota, for Taxes for the Year 1955.

*Indicate Type of Property: R-Residential, C-Commercial, I-Industrial, U-Utility, F-Farm

Table with columns: IN WHOSE NAME ASSESSED, TO WHOM TRANSFERRED, SUBDIVISION, DESCRIPTION OF PROPERTY, TRUE AND FULL VALUATIONS (LAND, BUILDINGS, MACHINERY, TOTAL TRUG AND FULL VALUE), ASSESSED VALUATIONS (RURAL, ALL OTHER, MACHINERY, TOTAL ASSESSED VALUE), Total Assessed Value as Equalized by the Board of Review, FINAL EQUALIZED VALUE.

Handwritten entries for rows 1-18, including names like Anne Frances Lusk, Ivar E. & Shirley B. Sigurdson, Helen Reese, Elmer L. Gookin, William M. Ekenberry, Marion W. Kennedy, Marcia M. Ekenberry, June & Allen L. Dewey, Mary E. Shelton, Chas. A. & Anna E. Rowe, Ollie C. & June Cochran, Alfred C. & Sigrid West, W.M. & Jone Carpenter, R. A. & Thelma G. Finley, Edward M. & Jean M. Cook, Sam V. Carpenter, Arthur G. & Evelyn S. Hunt, J.M. Brandt.

Cass County, Minnesota, for Taxes for the Year 1955.

Table with columns: SOLD FOR TAXES, VALUATIONS BY SCHOOL DISTRICTS AS EQUALIZED BY DEPARTMENT OF TAXATION, Tax Including State Homestead, State Tax on Non-Homestead, SPECIAL TAXES, TOTAL TAXES, PAID, WHEN PAID, Number of Receipt, March Settlement 1955, June Settlement 1955, November Settlement 1955, Collections to First Monday in January 1957, Delinquent on First Monday in January 1957, Total Delinquent Tax and Penalty, REMARKS.

Handwritten entries for rows 1-20, including tax amounts, settlement dates (e.g., MAY 31 1955), and remarks like 'PAID IN FULL' and '50' assessment for 1955'.

Summary totals for rows 19-20: 4200, 3807, 1027, 90478, 1968, 92448, 83446, 3252, 5748.

Vertical text on the left margin: Elmhurst, Shore, Hiram, Sunset Beach, White Pine, Sunset Beach, Chariton Beach, Plainview Beach, White Pine Beach, Chariton Beach, Peaceful View, Peaceful Shores, Peaceful Shores, Peaceful Shores.

Vertical text on the right margin: Elmhurst, Shore, Hiram, Sunset Beach, White Pine, Sunset Beach, Chariton Beach, Plainview Beach, White Pine Beach, Chariton Beach, Peaceful View, Peaceful Shores, Peaceful Shores, Peaceful Shores.

Assessment Roll and Tax List of Real Property in the Town of Hiram, Cass County, Minnesota, for Taxes for the Year 1955. *Indicate Type of Property: R-Residential, C-Commercial, I-Industrial, U-Utility, F-Farm

Cass County, Minnesota, for Taxes for the Year 1955.

Main table with columns: IN WHOSE NAME ASSESSED, TO WHOM TRANSFERRED, SUBDIVISION (Peaceful Shores), Sec. or Lot, Town or Block, No. of Acres of Land, No. School District, Indicate Improved or Not, Indicate Agricultural or Not, Indicate Lease Type, Indicate Property, TRUE AND FULL VALUATIONS (LAND, BUILDINGS, MACHINERY, TOTAL True and Full Value), RURAL (Homestead, Over \$4,000), ALL OTHER (Homestead, Over \$4,000), MACHINERY Permanently Attached to Real Estate, TOTAL ASSESSED VALUE, Total Assessed Value as Equalized by the Board of Review, FINAL EQUALIZED VALUE.

Table with columns: SOLD FOR TAXES, VALUATIONS BY SCHOOL DISTRICTS AS EQUALIZED BY DEPARTMENT OF TAXATION (District No., Rate), Tax Including State Homestead, State Tax on Non-Homestead, SPECIAL TAXES, TOTAL TAXES, PAID, WHEN PAID, Number of Receipt, March Settlement 1956, June Settlement 1956, Penalty, November Settlement 1956, Penalty, Collections to First Monday in January 1957, Penalty, Delinquent on First Monday in January 1957, Total Delinquent Tax and Penalty, REMARKS.

Elmhurst, Ritzmond, Beach, Plainview, Chariton, Peaceful Shores, Hiram, Sunset View, 1st Addition to Peaceful Shores, Hackensack Beach

Assessment Roll and Tax List of Real Property in the Town of Noram,

*Indicate Type of Property: R-Residential, C-Commercial, I-Industrial, U-Utility, F-Farm

IN WHOSE NAME ASSESSED	TO WHOM TRANSFERRED	DESCRIPTION OF PROPERTY					TRUE AND FULL VALUATIONS											FINAL EQUALIZED VALUE
		Subdivision	Sec. of Lot	Town or Block	Rng	Number of Acres of Land	LAND Exclusive of Structures and Improvements	BUILDINGS and Other Structures	MACHINERY Permanently Attached to Real Estate	TOTAL True and Full Value	RURAL		ALL OTHER		MACHINERY Permanently Attached to Real Estate 33 1/2 %	TOTAL ASSESSED VALUE	Total Assessed Value as Equivalized by the Board of Review	
											Acres	100ths	Homestead Up to \$4,000 20%	Over \$4,000 and Non-Homestead 33 1/2 %				
Paul E. Huckleberry		Peaceful Shores	39															
Gerald W + Helen M. Barrow			41															
Oscar M. + Gazzella Magnuson			44															
Irving A + Hazel M. Kellum			45															
Henry J. Y. Spaw			46															
Carl A. Ryan			48															
James M. Hicks			49															
John F. + Alma S. Green		Outlat	A															
Carl A. Ryan			B															
			C															

Cass County, Minnesota, for Taxes for the Year 1955.

SOLD FOR TAXES	VALUATIONS BY SCHOOL DISTRICTS AS EQUALIZED BY DEPARTMENT OF TAXATION						Tax Including State Homestead	State Tax on Non-Homestead	SPECIAL TAXES	TOTAL TAXES	PAID	WHEN PAID	Number of Receipt	March Settlement 1956	June Settlement 1956	Penalty	November Settlement 1956	Penalty	Collections to First Monday in January 1957	Penalty	Delinquent on First Monday in January 1957	Total Delinquent Tax and Penalty	REMARKS		
	District No.	Rate	District No.	Rate	District No.	Rate																			
	Dollars	Dollars	Dollars	Dollars	Dollars	Dollars																			
1	17						348	10		358	1	PAID IN FULL	OCT 1 1956	14108											
2	17						348	10		358	2	PAID IN FULL	OCT 1 1956												
3	17						6324	50		6426	3	Balance Paid	AUG 20 1956	13023		6338		6000							
4	17						1986	44		2030	4	Part Paid	MAY 22 1956	7684											
5	17						3786	48		3882	5	Part Paid	MAY 22 1956												
6	17						2640	66		2706	6	PAID IN FULL	MAY 31 1956	10400		2706									
7	17						2416	62		2478	7	PAID IN FULL	MAY 31 1956	10430		2478									
8	17						348	10		358	8	PAID IN FULL	MAY 31 1956	10433		716									
9	17						348	10		358	9	PAID IN FULL	MAY 31 1956												
10	17						348	10		358	10	2nd Half Paid	OCT 26 1956	15370											
11	17						348	10		358	11	1st Half Paid	MAY 31 1956	8970		179		179							
12	17						348	10		358	12	PAID IN FULL	MAY 31 1956												
13	17						8884	224		9108	13	2nd Half Paid	OCT 31 1956	15772											
14	17						1024	26		1050	14	1st Half Paid	MAY 31 1956	8970		525		871							
15	17						676	16		692	15	2nd Half Paid	OCT 26 1956	15370											
16	17										16	1st Half Paid	MAY 31 1956	8970		346									
17	17										17														
18	17										18														
19	17										19														
20	17										20														

Elmhurst Short Fitzmond Beach Sunset View 1st Addition to Peaceful Shores

Form 30 (55) Peaceful Shores Chariton Beach

Peaceful Shores

Assessment Roll and Tax List of Real Property in the Town of Hiam of Winn County, Minnesota
* Indicate Type of Property: R-Residential, C-Commercial, I-Industrial, U-Utility, F-Farm

Form 30 (35)

IN WHOSE NAME ASSESSED	TO WHOM TRANSFERRED	DESCRIPTION OF PROPERTY							TRUE AND FULL VALUATIONS													FINAL EQUALIZED VALUE	REMARKS					
		SUBDIVISION	Sec. of Lot	Town or Block	Rng.	Number of Acres of Land	No. School District	Indicate Homestead Yes or No	Indicate Agricultural Use Yes or No	Indicate Type of Property	LAND Exclusive of Structures and Improvements	BUILDINGS and Other Structures	MACHINERY Permanently Attached to Real Estate	TOTAL True and Full Value	RURAL					TOTAL ASSESSED VALUE	Total Assessed Value as Equalized by the Board of Review			Dollars				
															RURAL		ALL OTHER								Dollars	Dollars	Dollars	
															Homestead Up to \$4,000 20%	Over \$4,000 and Non-Homestead 33 1/3%	Homestead Up to \$1,000 25%	Over \$4,000 and Non-Homestead 40%	MACHINERY Permanently Attached to Real Estate 33 1/3%									
Henry P. & Augusta Henderson		Hiackensack Bathing Beach																										
" " " "		(Part of Lot 4 - Sec 13 - 140 - 31)	1																									
" " " "			2																									
" " " "			3																									
" " " "			4																									
" " " "			5																									
" " " "			6																									
" " " "			7																									
" " " "			8																									
" " " "			9																									
" " " "			10																									
" " " "			11																									
" " " "			12																									
" " " "			13																									
" " " "			14																									
" " " "			15																									
" " " "			16																									
" " " "			17																									
" " " "			18																									
" " " "			19																									
" " " "			20																									

Cass County, Minnesota, for Taxes for the Year 1955.

SOLD FOR TAXES	VALUATIONS BY SCHOOL DISTRICTS AS EQUALIZED BY DEPARTMENT OF TAXATION						Tax Including State Homestead	State Tax on Non-Homestead	SPECIAL TAXES	TOTAL TAXES	PAID	WHEN PAID	Number of Receipt	March Settlement 1956	June Settlement 1956	Penalty 1956	November Settlement 1956	Penalty 1956	Collections to First Monday in January 1957	Penalty 1957	Delinquent on First Monday in January 1957	Total Delinquent Tax and Penalty	REMARKS				
	District No.	Rate	District No.	Rate	District No.	Rate																					
	No.	No.	No.	No.	No.	No.																					
	Mills	Mills	Mills	Mills	Mills	Mills																					
1		80				1638	42		1680	1	PAID IN FULL	APR 2	1955														
2		73				1494	38		1532	2	PAID IN FULL	APR 2	1955	4742	10044												
3			4	79		1774			1774	3	PAID IN FULL	APR 2	1955														
4		174				3562	90		3652	4	PAID IN FULL	APR 2	1955														
5		67				1372	34		1406	5	PAID IN FULL	APR 2	1955														
6		75				1536	38		1574	6	Part Paid	MAY 31	1956	10437	800						774						
7		75				1536	38		1574	7	PAID IN FULL	MAY 31	1958														
8		65				1330	34		1364	8	PAID IN FULL	MAY 31	1958														
9		63				1290	32		1322	9	PAID IN FULL	MAY 31	1956	10438	5938												
10		63				1290	32		1322	10	PAID IN FULL	MAY 31	1958														
11		17				348	08		356	11	PAID IN FULL	MAY 31	1958														
12																											
13																											
14																											
15																											
16																											
17																											
18																											
19																											
20																											

752
 754
 79 = 79
 75 =
 79 = 831
 1774
 15396
 17190
 384
 17556
 16782
 774

Assessment Roll and Tax List of Real Property in the Town of Nissau, Cass County, Minnesota, for Taxes for the Year 1955.

*Indicate Type of Property: R-Residential, C-Commercial, I-Industrial, U-Utility, F-Farm

Table with columns: WHOSE NAME ASSESSED, TO WHOM TRANSFERRED, SUBDIVISION, DESCRIPTION OF PROPERTY, TRUE AND FULL VALUATIONS (RURAL, ALL OTHER, MACHINERY, TOTAL), ASSESSED VALUATIONS (RURAL, ALL OTHER, MACHINERY, TOTAL), FINAL EQUALIZED VALUE.

Cass County, Minnesota, for Taxes for the Year 1955.

Table with columns: SOLD FOR TAXES, VALUATIONS BY SCHOOL DISTRICTS AS EQUALIZED BY DEPARTMENT OF TAXATION, Tax Including State Homestead, State Tax on Non-Homestead, SPECIAL TAXES, TOTAL TAXES, PAID, WHEN PAID, Number of Receipt, March Settlement 1956, June Settlement 1956, Penalty, November Settlement 1956, Penalty, Collections to First Monday in January 1957, Penalty, Delinquent on First Monday in January 1957, Total Delinquent Tax and Penalty, REMARKS.

Peaceful Valley, Sunset View, 1st Addition to Peaceful Shores

Peaceful Valley, Sunset View, 1st Addition to Peaceful Shores

Assessment Roll and Tax List of Real Property in the Town of Hiram

*Indicate Type of Property: R-Residential, C-Commercial, I-Industrial, U-Utility, F-Farm

Cass County, Minnesota, for Taxes for the Year 1955.

IN WHOSE NAME ASSESSED	TO WHOM TRANSFERRED	DESCRIPTION OF PROPERTY					TRUE AND FULL VALUATIONS							FINAL EQUALIZED VALUE										
		SUBDIVISION	Sec. or Lot	Town or Block	Rgs.	Number of Acres of Land	LAND Exclusive of Structures and Improvements	BUILDINGS and Other Structures	MACHINERY Permanently Attached to Real Estate	TOTAL True and Full Value	RURAL		ALL OTHER			Machinery Permanently Attached to Real Estate	TOTAL ASSESSED VALUE	Total Assessed Value as Equalized by the Board of Review						
											Acres	100ths	Homestead Up to \$4,000 20%		Over \$4,000 and Non-Homestead 33 1/3%				Homestead Up to \$1,000 25%	Over \$1,000 and Non-Homestead 40%	Dollars	Dollars	Dollars	Dollars
Carl A. Ryans		Peaceful Valley	21																					
"			22																					
Gene A. Peterson			23																					
"			24																					
"			25																					

SOLD FOR TAXES	VALUATIONS BY SCHOOL DISTRICTS AS EQUALIZED BY DEPARTMENT OF TAXATION						Tax Including State Homestead	State Tax on Non-Homestead	SPECIAL TAXES	TOTAL TAXES	PAID	WHEN PAID	Number of Receipt	March Settlement 1956	June Settlement 1956	Penalty	November Settlement 1956	Penalty	Collections to First Monday in January 1957	Penalty	Delinquent on First Monday in January 1957	Total Delinquent Tax and Penalty	REMARKS																																		
	District No.	Rate	District No.	Rate	District No.	Rate																		District No.	Rate																																
	Dollars	Dollars	Dollars	Dollars	Dollars	Dollars																		Dollars	Dollars																																
1	33							6.76	16																																																
2	33							6.76	18																																																
3	33							6.76	18																																																
4	33							6.76	16																																																
5	33							6.76	18																																																
6																																																									
7																																																									
8																																																									
9																																																									
10																																																									
11																																																									
12																																																									
13																																																									
14																																																									
15																																																									
16																																																									
17																																																									
18																																																									
19																																																									
20																																																									

165 3380 86 3466 3466

Peaceful Valley, Sunset View, 1st Addition to Peaceful Shores

Assessment Roll and Tax List of Real Property in the Town of Hiram, of Hiram, Minnesota. *Indicate Type of Property: R-Residential, C-Commercial, I-Industrial, U-Utility, F-Farm

Table with columns: IN WHOSE NAME ASSESSED, TO WHOM TRANSFERRED, SUBDIVISION, DESCRIPTION OF PROPERTY, TRUE AND FULL VALUATIONS, ASSESSED VALUATIONS, FINAL EQUALIZED VALUE. Includes handwritten entries for Carl A. Ryan, Paul William Mosher, and Town of Hiram.

Cass County, Minnesota, for Taxes for the Year 1955.

Table with columns: SOLD FOR TAXES, VALUATIONS BY SCHOOL DISTRICTS AS EQUALIZED BY DEPARTMENT OF TAXATION, SPECIAL TAXES, TOTAL TAXES, PAID, WHEN PAID, Number of Receipt, March Settlement 1956, June Settlement 1956, November Settlement 1956, Collections to First Monday in January 1957, Delinquent on First Monday in January 1957, Total Delinquent Tax and Penalty, REMARKS. Includes handwritten entries for payments and settlements.

Assessment Roll and Tax List of Real Property in the Town of Hiram

*Indicate Type of Property: R-Residential, C-Commercial, I-Industrial, U-Utility, F-Farm

Table with columns: IN WHOSE NAME ASSESSED, TO WHOM TRANSFERRED, DESCRIPTION OF PROPERTY, TRUE AND FULL VALUATIONS, ASSESSED VALUATIONS, and FINAL EQUALIZED VALUE. Includes handwritten entries for 'Coughlin Beach' and 'Joseph & Blanche L. Coughlin'.

Total Area 785379

Cass County, Minnesota, for Taxes for the Year 1955.

Table with columns: SOLD FOR TAXES, VALUATIONS BY SCHOOL DISTRICTS AS EQUALIZED BY DEPARTMENT OF TAXATION, Tax including State Homestead, State Tax on Non-Homestead, SPECIAL TAXES, TOTAL TAXES, PAID, WHEN PAID, Number of Receipt, March Settlement 1956, June Settlement 1956, November Settlement 1956, Collections to First Monday in January 1957, Delinquent on First Monday in January 1957, Total Delinquent Tax and Penalty, and REMARKS. Includes handwritten calculations for 'Grand Total'.

Grand Total
H 9027 2496 = 11573
28060 20881 = 48941
37087 28377 = 60464

MA 525234
N 759104 352.30
1284338 1309568