





INDEX TO SECTIONS

SECTION PAGE

Section 1	
" 2	
" 3	
" 4	
" 5	
" 6	
" 7	
" 8	
" 9	
" 10	
" 11	
" 12	
" 13	
" 14	
" 15	
" 16	
" 17	
" 18	
" 19	
" 20	
" 21	
" 22	
" 23	
" 24	
" 25	
" 26	
" 27	
" 28	
" 29	
" 0	
" 31	
" 32	
" 33	
" 34	
" 35	
" 36	

For Convenience of Auditor in Showing Boundaries of School Districts

Township No. 139 Range No. 26 Mer. P.M.

6	5	4	3	2	
7	8	9	10	11	12
13	17	18	15	14	13
19	20	21	22	23	24
30	29	28	27	28	25
31	32	33	34	35	36

SUMMARY OF TAX COLLECTION

Original Levy	- - - - -	\$	.....
Additions	- - - - -	\$	.....
Abatements	- - - - -	\$	.....
		\$	.....
COLLECTIONS			
March Settlement	- - - - -	\$	.....
June Settlement	- - - - -	\$	.....
November Settlement	- - - - -	\$	.....
January Settlement	- - - - -	\$	.....
		\$	.....
Over Collected	- - - - -	\$	.....
Under Collected	- - - - -	\$	.....
Delinquent	- - - - -	\$	.....
Total	- - - - -	\$	.....



Treasurer's Office, Cass County, Minnesota

RECEIVED this, the first Monday (being the fourth day) of January, A. D. 1943, of L. C. Peterson, Auditor of said County, Minnesota, the Tax List of all Taxable Real and Personal Property in the Township of Crooked Lake in said County for the year A. D. 1942, as specified above and amounting to Nine thousand one hundred sixty six  $\frac{40}{100}$  cents.  
W. J. McKeown  
County Treasurer.

December 31 1942

Office of County Treasurer, Cass County, Minnesota

To L. C. Peterson, County Auditor:  
Sir:—I herewith return to you the Tax List for the Township of Crooked Lake in said County for the year 1942, heretofore received from you. I certify that I have compared the same with the duplicate receipts in your office, and have written opposite the amount of each tax so received the words "First Quarter Paid", "Second Quarter Paid", "Third Quarter Paid" or "Paid in full" as the case may be, and the number of my receipt given in discharge of said tax, and each tract or lot of real property against which the taxes remain unpaid is delinquent for said year.  
Yours respectfully,  
W. J. McKeown  
County Treasurer.

Auditor's Office, Cass County, Minnesota

I, \_\_\_\_\_ Auditor of said County, and State of Minnesota, do hereby certify that the following is a correct list of the Taxes levied on the Real and Personal Property in the \_\_\_\_\_ of \_\_\_\_\_ for the year 1942.  
WITNESS my hand and official seal, the \_\_\_\_\_ day of \_\_\_\_\_ 1943.  
\_\_\_\_\_  
County Auditor.

(SEAL)

Auditor's Office, Cass County, Minnesota

\_\_\_\_\_ 1942  
I hereby certify that on the first Monday in January 1944, I received of \_\_\_\_\_, County Treasurer, the Tax List of the \_\_\_\_\_ of \_\_\_\_\_ in said County for the year 1942 that I have compared the said list with the Statements receipted for by said Treasurer, which are on file in my office, and that each tract or lot of real property therein against which the taxes, or any part thereof, remains unpaid are delinquent for said year.  
\_\_\_\_\_  
County Auditor.

(SEAL)







COLLECTIONS OF TAXES OF 1942

*Town*

OF

*Crooked Lake*

CASS COUNTY, MINNESOTA

FUNDS	MARCH SETTLEMENT 1942	JUNE SETTLEMENT 1943	NOV. SETTLEMENT 1943	Amount Collected from Nov. 1943 to First Monday in Jan. 1944	REDUCTIONS	Cancelled + Forfeited	Total Reductions and Collected	BALANCE UNCOLLECTED	ADDITIONS	Taxes Overpaid	Total Uncollected to First Monday in January, 1944
State Revenue, State School, Teachers Insurance, State Debt--Non-Homestead, State Debt--Homestead,	26 21 6 48	130 88 33 98	47 04 12 38	6 02 1 81							
County Revenue, County Road and Bridge, County Welfare, County Bond and Interest,	109 49 16 62 133 04 66 42	574 04 87 16 697 50 348 22	208 78 31 70 253 68 126 65	30 61 4 65 37 19 18 57							
Town Revenue, Town Road and Bridge, Town Drag, Town State Loan, <i>Tire</i> <i>Phone</i> <i>Skj.</i>	18 52 54 34 4 03 10 06 10 06 10 06	97 08 284 91 2 110 52 76 52 76 52 76	35 31 103 62 7 68 19 19 19 19 19 19	5 18 15 19 1 13 2 81 2 81 2 81							
School Local 1 Mill, School Special, School State Loan, <i>Deficiency</i> <i>C.P.O.</i>	4 03 105 21 12 92 80 50 32 20	21 12 435 33 99 20 432 09 168 84	7 67 154 20 36 07 153 52 61 41	1 13 25 36 9 29 72 50 9 10							
<i>Total</i>	706 19	3579 72	1297 28								
Money and Credits,	4 48	214	180								
	710 67	3581 87	1299 08	192 06	442 38	315 36			180	149 80	277 658

	SCHOOL DISTRICT NO.	LOCAL 1 MILL	SPECIAL	STATE LOAN	Deficiency	Cap Outlay	TOTALS
MARCH SETTLEMENT	<i>Un.</i>	403	105 21	1892	80 50	32 20	240 86
	Totals	403	105 21	1892	80 50	32 20	240 86
JUNE SETTLEMENT	<i>Un.</i>	2112	435 33	9920	432 09	168 84	1146 58
	Totals	2112	435 33	9920	432 09	168 84	1146 58
NOVEMBER SETTLEMENT	<i>Un.</i>	767	154 20	3607	153 52	61 41	412 87
	Totals	767	154 20	3607	153 52	61 41	412 87
NOVEMBER to JANUARY		113	25 36	529	22 50	9 00	63 28
	Totals	113	25 36	529	22 50	9 00	63 28
ADDITIONS							
	Totals						
REDUCTIONS							
	Totals						



































Tax List of Real Property in the Town of Crooked Lake

IN WHOSE NAME ASSESSED	TO WHOM TRANSFERRED	SUB-DIVISION	Sec. or Lot	Town or Block	Range	NO. OF ACRES Acres 100s	No. of School District	VALUATION BY SCHOOL DISTRICTS					SOLD FOR TAXES	Rate and Tax Less Homestead Exemption Mills	State Tax on Non-Homestead Mills	TOTAL GENERAL TAXES	SPECIAL ASSESSMENTS					TOTAL TAXES	PAID	WHEN PAID Month Day Year	Number of Receipt	March Settlement 1943	June Settlement 1943	Penalty	November Settlement 1943	Penalty	Collections to First Monday in January 1944	Penalty	Delinquent on First Monday in January 1944	Total Delinquent Tax and Penalty	REMARKS						
								District No.	District No.	District No.	District No.	District No.					District Rate	District Rate	District Rate	District Rate	District Rate																				
								Dollars	Dollars	Dollars	Dollars	Dollars					Dollars	Dollars	Dollars	Dollars	Dollars																				
Ed. Nystrom		<del>NE 1/4 of NE 1/4</del> Lot 1				9 139 26 29 06					109		1720	80 48	1800 1818							1	PAID IN FULL	FEB 11 1943	842	1800															
		NW 1/4 of NE 1/4																																							
		SW 1/4 of NE 1/4																																							
Lloyd A. Brown		SE 1/4 of NE 1/4 " 2				32 68					114		1798	84 102	1882 1700									4	PAID IN FULL	MAY 20 1943	4367		1882												
State of Minnesota		NE 1/4 of NW 1/4 " 10																																							
State of Minnesota		NW 1/4 of NW 1/4																																							
Wasca Realty Co.		SW 1/4 of NW 1/4 " 8				39 65					110		SOLD FOR TAXES	1736	82 100	1818 1836									8	PAID IN FULL	JUN 2 1943	5063		1818							480 Cane.				
"	State of Minnesota	SE 1/4 of NW 1/4 " 9				20 65					29		SOLD FOR TAXES	458	22 26	480 484									9	Inf.											544 Cane.				
"																																									
"	State of Minnesota	NE 1/4 of SW 1/4 " 6				30 31					33		SOLD FOR TAXES	520	34 39	544 560																									
"		NW 1/4 of SW 1/4 " 7				46 22					159		SOLD FOR TAXES	2508	118 142	2636 2650																									
"		SW 1/4 of SW 1/4																																							
Lawrence	Naomi V. Fallander	SE 1/4 of SW 1/4 " 5				38 64					105		SOLD FOR TAXES	1656	78 94	1734 1750																									
Cleveland Land Co.		NE 1/4 of SE 1/4 " 3				36 82					102		SOLD FOR TAXES	1610	76 92	1686 1702																									
		NW 1/4 of SE 1/4																																							
		SW 1/4 of SE 1/4																																							
"		SE 1/4 of SE 1/4 " 4				40 73					112		SOLD FOR TAXES	1784	84 102	1868 1886																									
						314 76					874 N.H.			13790	786 648	14576 14438																								3554	10.24 Cane.



























































SECURITY PRINTING COMPANY, ST. CLOUD, MINN.

IN WHOSE NAME ASSESSED

TO WHOM

Walter M. & Althea H. Faust

1

A. G. Bogen

2

Eva Rindahl

3

4

5

6

Fred & Emma Donicht

7

Arthur L. & Emma

Oliver Donicht

8

Lawrence & Lauretta Rogers

9

Oliver Orvold

10

Minnie I. Falk

11

A. G. Bogen

12

13

Alice Matthews & Douglas Audette

14

Nathaniel & Dorothy Goldberg

15

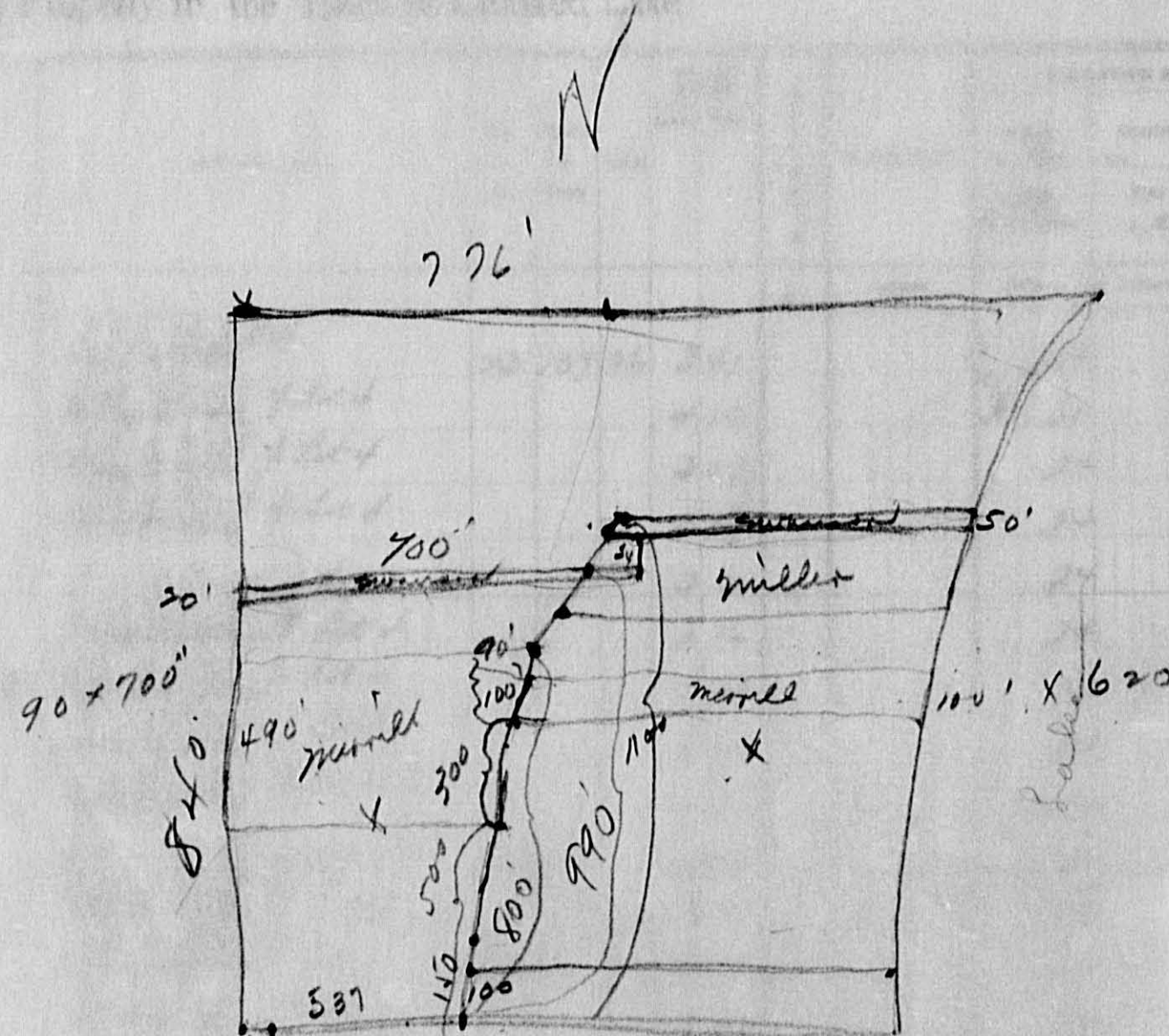
16

17

18

19

20



SCHOOL DISTRICTS

District No.	District No.	SOLD FOR TAXES	Rate and Tax Less Exemption	State Tax on Non-Homestead
Rate	Rate		Mills	Mills
Dollars	Dollars	Dollars	\$ cts.	\$ cts.
			1088	50
		SOLD FOR TAXES	804	62
		SOLD FOR TAXES	378	18
		SOLD FOR TAXES	378	18
		SOLD FOR TAXES	378	18
		SOLD FOR TAXES	378	18
			1136	61
			378	18
			1956	122
			1642	102
			1798	109
		SOLD FOR TAXES	378	18
		SOLD FOR TAXES	378	18
		SOLD FOR TAXES	1752	108
			3172	198
			15994	564
				688

This map is for 1942 tax list

REMARKS

Acres	Owner	Assessment	Remarks
136	Walter M. & Althea H. Faust	2.05	A
	A. G. Bogen	4.10	B
	A. G. Bogen	3.07	C
	A. G. Bogen	3.07	D
	A. G. Bogen	3.11	E
	A. G. Bogen	3.16	F
	Fred & Emma Donicht	3.21	G
	Oliver Donicht	3.22	H
	Lawrence & Lauretta Rogers	3.29	I
	Oliver Orvold	3.31	J
	Minnie I. Falk	3.35	K
	A. G. Bogen	3.38	L
	A. G. Bogen	3.40	M
	Alice Matthews & Douglas Audette	4.56	N
	Nathaniel & Dorothy Goldberg	9.70	O

ROOSEVELT LAKE

South line of Gov't Lot 4, Sec. 23-139-26

16558  
76682

3072







































































































































































































IN WHOSE NAME ASSESSED	TO WHOM TRANSFERRED	SUB-DIVISION	Sec. or Lot	Town or Block	Range	NO. OF ACRES		No. of School District	VALUATION BY SCHOOL DISTRICTS					SOLD FOR TAXES
						Acres	100s		District No.	District No.	District No.	District No.	District No.	
		<i>Brown's Lake Washburn Addition</i>												
		<i>all of Gov't Lot 2-D. 5-139-26</i>												
<i>Geo. W. &amp; Eleanore M. Lawson</i>				<i>1</i>	<i>1</i>									
"				<i>2</i>										
"				<i>3</i>										
"				<i>4</i>										
"				<i>5</i>										
"				<i>6</i>										
"				<i>7</i>										
"				<i>8</i>										
"				<i>9</i>										
"				<i>10</i>										
<i>Modern Home Co.</i>				<i>11</i>								SOLD FOR TAXES		
<i>Geo. W. &amp; Eleanore M. Lawson</i>				<i>12</i>										
"				<i>13</i>										
<i>Modern Home Co.</i>				<i>14</i>								SOLD FOR TAXES		
<i>Wm Earl &amp; Marie Lowe</i>				<i>15</i>										
<i>Geo. C. Osen</i>				<i>16</i>								SOLD FOR TAXES		
<i>Modern Home Co.</i>				<i>17</i>								SOLD FOR TAXES		
"				<i>18</i>								SOLD FOR TAXES		
<i>George W. &amp; Eleanore M. Lawson</i>				<i>19</i>										
"				<i>20</i>										

*300.72.*

Rate and Tax Less Homestead Exemption	State Tax on Non-Homestead	TOTAL GENERAL TAXES	SPECIAL ASSESSMENTS				TOTAL TAXES	PAID	WHEN PAID	Number of Receipt	March Settlement 1943	June Settlement 1943	Penalty	November Settlement 1943	Penalty	Collections to First Monday in January 1944	Penalty	Delinquent on First Monday in January 1944	Total Delinquent Tax and Penalty	REMARKS
\$ cts.	\$ cts.	\$ cts.	\$ cts.	\$ cts.	\$ cts.	\$ cts.														
<i>208</i>	<i>08</i>	<i>208</i>	<i>16</i>	<i>18</i>	<i>16</i>	<i>18</i>	<i>16</i>	<i>18</i>	<i>16</i>	<i>18</i>	<i>16</i>	<i>18</i>	<i>16</i>	<i>18</i>	<i>16</i>	<i>18</i>	<i>16</i>	<i>18</i>	<i>16</i>	<i>18</i>
<i>208</i>	<i>08</i>	<i>208</i>	<i>16</i>	<i>18</i>	<i>16</i>	<i>18</i>	<i>16</i>	<i>18</i>	<i>16</i>	<i>18</i>	<i>16</i>	<i>18</i>	<i>16</i>	<i>18</i>	<i>16</i>	<i>18</i>	<i>16</i>	<i>18</i>	<i>16</i>	<i>18</i>
<i>208</i>	<i>08</i>	<i>208</i>	<i>16</i>	<i>18</i>	<i>16</i>	<i>18</i>	<i>16</i>	<i>18</i>	<i>16</i>	<i>18</i>	<i>16</i>	<i>18</i>	<i>16</i>	<i>18</i>	<i>16</i>	<i>18</i>	<i>16</i>	<i>18</i>	<i>16</i>	<i>18</i>
<i>208</i>	<i>08</i>	<i>208</i>	<i>16</i>	<i>18</i>	<i>16</i>	<i>18</i>	<i>16</i>	<i>18</i>	<i>16</i>	<i>18</i>	<i>16</i>	<i>18</i>	<i>16</i>	<i>18</i>	<i>16</i>	<i>18</i>	<i>16</i>	<i>18</i>	<i>16</i>	<i>18</i>
<i>208</i>	<i>08</i>	<i>208</i>	<i>16</i>	<i>18</i>	<i>16</i>	<i>18</i>	<i>16</i>	<i>18</i>	<i>16</i>	<i>18</i>	<i>16</i>	<i>18</i>	<i>16</i>	<i>18</i>	<i>16</i>	<i>18</i>	<i>16</i>	<i>18</i>	<i>16</i>	<i>18</i>
<i>208</i>	<i>08</i>	<i>208</i>	<i>16</i>	<i>18</i>	<i>16</i>	<i>18</i>	<i>16</i>	<i>18</i>	<i>16</i>	<i>18</i>	<i>16</i>	<i>18</i>	<i>16</i>	<i>18</i>	<i>16</i>	<i>18</i>	<i>16</i>	<i>18</i>	<i>16</i>	<i>18</i>
<i>208</i>	<i>08</i>	<i>208</i>	<i>16</i>	<i>18</i>	<i>16</i>	<i>18</i>	<i>16</i>	<i>18</i>	<i>16</i>	<i>18</i>	<i>16</i>	<i>18</i>	<i>16</i>	<i>18</i>	<i>16</i>	<i>18</i>	<i>16</i>	<i>18</i>	<i>16</i>	<i>18</i>
<i>208</i>	<i>08</i>	<i>208</i>	<i>16</i>	<i>18</i>	<i>16</i>	<i>18</i>	<i>16</i>	<i>18</i>	<i>16</i>	<i>18</i>	<i>16</i>	<i>18</i>	<i>16</i>	<i>18</i>	<i>16</i>	<i>18</i>	<i>16</i>	<i>18</i>	<i>16</i>	<i>18</i>
<i>208</i>	<i>08</i>	<i>208</i>	<i>16</i>	<i>18</i>	<i>16</i>	<i>18</i>	<i>16</i>	<i>18</i>	<i>16</i>	<i>18</i>	<i>16</i>	<i>18</i>	<i>16</i>	<i>18</i>	<i>16</i>	<i>18</i>	<i>16</i>	<i>18</i>	<i>16</i>	<i>18</i>
<i>208</i>	<i>08</i>	<i>208</i>	<i>16</i>	<i>18</i>	<i>16</i>	<i>18</i>	<i>16</i>	<i>18</i>	<i>16</i>	<i>18</i>	<i>16</i>	<i>18</i>	<i>16</i>	<i>18</i>	<i>16</i>	<i>18</i>	<i>16</i>	<i>18</i>	<i>16</i>	<i>18</i>
<i>208</i>	<i>08</i>	<i>208</i>	<i>16</i>	<i>18</i>	<i>16</i>	<i>18</i>	<i>16</i>	<i>18</i>	<i>16</i>	<i>18</i>	<i>16</i>	<i>18</i>	<i>16</i>	<i>18</i>	<i>16</i>	<i>18</i>	<i>16</i>	<i>18</i>	<i>16</i>	<i>18</i>
<i>208</i>	<i>08</i>	<i>208</i>	<i>16</i>	<i>18</i>	<i>16</i>	<i>18</i>	<i>16</i>	<i>18</i>	<i>16</i>	<i>18</i>	<i>16</i>	<i>18</i>	<i>16</i>	<i>18</i>	<i>16</i>	<i>18</i>	<i>16</i>	<i>18</i>	<i>16</i>	<i>18</i>
<i>208</i>	<i>08</i>	<i>208</i>	<i>16</i>	<i>18</i>	<i>16</i>	<i>18</i>	<i>16</i>	<i>18</i>	<i>16</i>	<i>18</i>	<i>16</i>	<i>18</i>	<i>16</i>	<i>18</i>	<i>16</i>	<i>18</i>	<i>16</i>	<i>18</i>	<i>16</i>	<i>18</i>
<i>208</i>	<i>08</i>	<i>208</i>	<i>16</i>	<i>18</i>	<i>16</i>	<i>18</i>	<i>16</i>	<i>18</i>	<i>16</i>	<i>18</i>	<i>16</i>	<i>18</i>	<i>16</i>	<i>18</i>	<i>16</i>	<i>18</i>	<i>16</i>	<i>18</i>	<i>16</i>	<i>18</i>
<i>208</i>	<i>08</i>	<i>208</i>	<i>16</i>	<i>18</i>	<i>16</i>	<i>18</i>	<i>16</i>	<i>18</i>	<i>16</i>	<i>18</i>	<i>16</i>	<i>18</i>	<i>16</i>	<i>18</i>	<i>16</i>	<i>18</i>	<i>16</i>	<i>18</i>	<i>16</i>	<i>18</i>
<i>208</i>	<i>08</i>	<i>208</i>	<i>16</i>	<i>18</i>	<i>16</i>	<i>18</i>	<i>16</i>	<i>18</i>	<i>16</i>	<i>18</i>	<i>16</i>	<i>18</i>	<i>16</i>	<i>18</i>	<i>16</i>	<i>18</i>	<i>16</i>	<i>18</i>	<i>16</i>	<i>18</i>
<i>208</i>	<i>08</i>	<i>208</i>	<i>16</i>	<i>18</i>	<i>16</i>	<i>18</i>	<i>16</i>	<i>18</i>	<i>16</i>	<i>18</i>	<i>16</i>	<i>18</i>	<i>16</i>	<i>18</i>	<i>16</i>	<i>18</i>	<i>16</i>	<i>18</i>	<i>16</i>	<i>18</i>
<i>208</i>	<i>08</i>	<i>208</i>	<i>16</i>	<i>18</i>	<i>16</i>	<i>18</i>	<i>16</i>	<i>18</i>	<i>16</i>	<i>18</i>	<i>16</i>	<i>18</i>	<i>16</i>	<i>18</i>	<i>16</i>	<i>18</i>	<i>16</i>	<i>18</i>	<i>16</i>	<i>18</i>
<i>208</i>	<i>08</i>	<i>208</i>	<i>16</i>	<i>18</i>	<i>16</i>	<i>18</i>	<i>16</i>	<i>18</i>	<i>16</i>	<i>18</i>	<i>16</i>	<i>18</i>	<i>16</i>	<i>18</i>	<i>16</i>	<i>18</i>	<i>16</i>	<i>18</i>	<i>16</i>	<i>18</i>
<i>208</i>	<i>08</i>	<i>208</i>	<i>16</i>	<i>18</i>	<i>16</i>	<i>18</i>	<i>16</i>	<i>18</i>	<i>16</i>	<i>18</i>	<i>16</i>	<i>18</i>	<i>16</i>	<i>18</i>	<i>16</i>	<i>18</i>	<i>16</i>	<i>18</i>	<i>16</i>	<i>18</i>
<i>208</i>	<i>08</i>	<i>208</i>	<i>16</i>	<i>18</i>	<i>16</i>	<i>18</i>	<i>16</i>	<i>18</i>	<i>16</i>	<i>18</i>	<i>16</i>	<i>18</i>	<i>16</i>	<i>18</i>	<i>16</i>	<i>18</i>	<i>16</i>	<i>18</i>	<i>16</i>	<i>18</i>
<i>208</i>	<i>08</i>	<i>208</i>	<i>16</i>	<i>18</i>	<i>16</i>	<i>18</i>	<i>16</i>	<i>18</i>	<i>16</i>	<i>18</i>	<i>16</i>	<i>18</i>	<i>16</i>	<i>18</i>	<i>16</i>	<i>18</i>	<i>16</i>	<i>18</i>	<i>16</i>	<i>18</i>
<i>208</i>	<i>08</i>	<i>208</i>	<i>16</i>	<i>18</i>	<i>16</i>	<i>18</i>	<i>16</i>	<i>18</i>	<i>16</i>	<i>18</i>	<i>16</i>	<i>18</i>	<i>16</i>	<i>18</i>	<i>16</i>	<i>18</i>	<i>16</i>	<i>18</i>	<i>16</i>	<i>18</i>
<i>208</i>	<i>08</i>	<i>208</i>	<i>16</i>	<i>18</i>	<i>16</i>	<i>18</i>	<i>16</i>	<i>18</i>	<i>16</i>	<i>18</i>	<i>16</i>	<i>18</i>	<i>16</i>	<i>18</i>	<i>16</i>	<i>18</i>	<i>16</i>	<i>18</i>	<i>16</i>	<i>18</i>
<i>208</i>	<i>08</i>	<i>208</i>	<i>16</i>	<i>18</i>	<i>16</i>	<i>18</i>	<i>16</i>	<i>18</i>	<i>16</i>	<i>18</i>	<i>16</i>	<i>18</i>	<i>16</i>	<i>18</i>	<i>16</i>	<i>18</i>	<i>16</i>	<i>18</i>	<i>16</i>	<i>18</i>
<i>208</i>	<i>08</i>	<i>208</i>	<i>16</i>	<i>18</i>	<i>16</i>	<i>18</i>	<i>16</i>	<i>18</i>	<i>16</i>	<i>18</i>	<i>16</i>	<i>18</i>	<i>16</i>	<i>18</i>	<i>16</i>	<i>18</i>	<i>16</i>	<i>18</i>	<i>16</i>	<i>18</i>
<i>208</i>	<i>08</i>	<i>208</i>	<i>16</i>	<i>18</i>	<i>16</i>	<i>18</i>	<i>16</i>	<i>18</i>	<i>16</i>	<i>18</i>	<i>16</i>	<i>18</i>	<i>16</i>	<i>18</i>	<i>16</i>	<i>18</i>	<i>16</i>	<i>18</i>	<i>16</i>	<i>18</i>
<i>208</i>	<i>08</i>	<i>208</i>	<i>16</i>	<i>18</i>	<i>16</i>	<i>18</i>	<i>16</i>	<i>18</i>	<i>16</i>	<i>18</i>	<i>16</i>	<i>18</i>	<i>16</i>	<i>18</i>	<i>16</i>	<i>18</i>	<i>16</i>	<i>18</i>	<i>16</i>	<i>18</i>
<i>208</i>	<i>08</i>	<i>208</i>	<i>16</i>	<i>18</i>	<i>16</i>	<i>18</i>	<i>16</i>	<i>18</i>	<i>16</i>	<i>18</i>	<i>16</i>	<i>18</i>	<i>16</i>	<i>18</i>	<i>16</i>	<i>18</i>	<i>16</i>	<i>18</i>	<i>16</i>	<i>18</i>
<i>208</i>	<i>08</i>	<i>208</i>	<i>16</i>	<i>18</i>	<i>16</i>	<i>18</i>	<i>16</i>	<i>18</i>	<i>16</i>	<i>18</i>	<i>16</i>	<i>18</i>	<i>16</i>	<i>18</i>	<i>16</i>	<i>18</i>	<i>16</i>	<i>18</i>	<i>16</i>	<i>18</i>
<i>208</i>	<i>08</i>	<i>208</i>	<i>16</i>	<i>18</i>	<i>16</i>	<i>18</i>	<i>16</i>	<i>18</i>	<i>16</i>	<i>18</i>	<i>16</i>	<i>18</i>	<i>16</i>	<i>18</i>	<i>16</i>	<i>18</i>	<i>16</i>	<i>18</i>	<i>16</i>	<i>18</i>
<i>208</i>	<i>08</i>	<i>208</i>	<i>16</i>	<i>18</i>	<i>16</i>	<i>18</i>	<i>16</i>	<i>18</i>	<i>16</i>	<i>18</i>	<i>16</i>	<i>18</i>	<i>16</i>	<i>18</i>	<i>16</i>	<i>18</i>	<i>16</i>	<i>18</i>	<i>16</i>	<i>18</i>
<i>208</i>	<i>08</i>	<i>208</i>	<i>16</i>	<i>18</i>	<i>16</i>	<i>18</i>	<i>16</i>	<i>18</i>	<i>16</i>	<i>18</i>	<i>16</i>	<i>18</i>	<i>16</i>	<i>18</i>	<i>16</i>	<i>18</i>	<i>16</i>	<i>18</i>	<i>16</i>	<i>18</i>
<i>208</i>	<i>08</i>	<i>208</i>	<i>16</i>	<i>18</i>	<i>16</i>	<i>18</i>	<i>16</i>	<i>18</i>	<i>16</i>	<i>18</i>	<i>16</i>	<i>18</i>	<i>16</i>	<i>18</i>	<i>16</i>	<i>18</i>	<i>16</i>	<i>18</i>	<i>16</i>	<i>18</i>
<i>208</i>	<i>08</i>	<i>208</i>	<i>16</i>	<i>18</i>	<i>16</i>	<i>18</i>	<i>16</i>	<i>18</i>	<i>16</i>	<i>18</i>	<i>16</i>	<i>18</i>	<i>16</i>	<i>18</i>	<i>16</i>	<i>18</i>	<i>16</i>	<i>18</i>	<i>16</i>	<i>18</i>
<i>208</i>	<i>08</i>	<i>208</i>	<i>16</i>	<i>18</i>	<i>16</i>	<i>18</i>	<i>16</i>	<i>18</i>	<i>16</i>	<i>18</i>	<i>16</i>	<i>18</i>	<i>16</i>	<i>18</i>	<i>16</i>	<i>18</i>	<i>16</i>	<i>18</i>	<i>16</i>	<i>18</i>
<i>208</i>	<i>08</i>	<i></i>																		



























SECURITY PRINTING COMPANY, ST. CLOUD, MINN.

IN WHOSE NAME ASSESSED

TO WHOM TRANSFERRED

SUB-DIVISION

Sec. or Lot

Town or Block

Range

NO. OF ACRES

Acres

100s

No. of School District

VALUATION

VALUATION BY SCHOOL DISTRICTS

District No., District No., District No., District No., Rate Mills, Rate Mills, Rate Mills, Rate Mills

SOLD FOR TAXES

Dollars, Dollars, Dollars, Dollars, Dollars, Dollars

Rate and Tax Less Homestead Exemption

State Tax on Non-Homestead

TOTAL GENERAL TAXES

SPECIAL ASSESSMENTS

TOTAL TAXES

PAID

WHEN PAID

Number of Receipt

March Settlement 1943

June Settlement 1943

Penalty

November Settlement 1943

Penalty

Collections to First Monday in January 1941

Penalty

Delinquent on First Monday in January 1944

Total Delinquent Tax and Penalty

REMARKS

1  
2  
3  
4  
5  
6  
7  
8  
9  
10  
11  
12  
13  
14  
15  
16  
17  
18  
19  
20

1.80  
3.60  
90  
1.80  
2.70  
90  
1.80  
1.80  
1.80  
90  
90  
18.90\*

1  
2  
3  
4  
5  
6  
7  
8  
9  
10  
11  
12  
13  
14  
15  
16  
17  
18  
19  
20