

BOOK OF THE GREAT EAST  
Crooked Lake









COLLECTIONS OF TAXES OF 1956

Sum OF *Canoch Lake* CASS COUNTY, MINNESOTA

FUNDS	MARCH SETTLEMENT	JUNE SETTLEMENT	NOV. SETTLEMENT	Amount Collected from Nov. 1954 to First Monday in Jan. 1955	REDUCTIONS	Total Reductions and Collected	BALANCE UNCOLLECTED	ADDITIONS	Total Uncollected to First Monday in January, 1955
	1957	1957	1957						
State-Non-Homestead,	4768	18119	4697	90					
State-Homestead,	3438	15226	4464	197					
County Revenue,	24437	108221	31726	1403					
County Road and Bridge,	12796	56668	16672	734					
County Welfare,	43045	190626	55883	2472					
County Bond and Interest,	6985	30931	9067	402					
R. & B. Bldg.	1804	7993	2343	103					
Mil. Bldg.	6515	28854	8458	375					
Chas Co. Agri.	452	1998	577	27					
Town Revenue,	3312	14667	4350	196					
Town Road and Bridge,	10576	46837	13732	607					
Town Drag,	902	3996	1171	52					
Town State Loan,									
Wire	1985	8792	2577	114					
Phone									
School Local 1 Mill,	911	3976	1171	52					
School Special,	38246	157308	43377	1621					
School State Loan,									
Deficiency	18680	82725	24251	1073					
Tuition									
Transportation	659	2917	853	37					
C.O.	8664	38365	11247	497					
	188165	820239	236540	10046					

MARCH SETTLEMENT	School District No.	LOCAL 1 MILL	SPECIAL	STATE LOAN	Deficiency	Transp.	C.O.	TOTALS
	A-1 a C-17a	274	6874		5692	201	2641	15682
		627	31372		12988	458	6023	51468
		Totals	901	38246		18680	659	8664
	A-1 a C-17a	1620	40510		33542	1183	15556	92411
		2376	118798		49183	1734	22809	174900
		Totals	3996	159308		82725	2917	38365
	C-1a C-17a	607	15182		12569	443	5829	34630
		564	28217		11682	412	5418	46293
		Totals	1171	43399		24251	855	11247
	C-1a C-17a	39	971		804	28	372	2214
		13	650		269	89	125	1066
		Totals	52	1621		1073	37	497
ADDITIONS	School District No.							
	Totals							
REDUCTIONS	School District No.							
	Totals							

Paul Estate

The Harrows and Top's Part of Lake Roosevelt Trails  
Mendota Bros. Assessor's Office  
Toman's Bros. Assessor's Office  
Hoover's Lake Hills















































Assessment Roll and Tax List of Real Property in the Town of Wooded Lake, of Wooded Lake County, Minnesota. \* Indicate Type of Property: R-Residential, C-Commercial, I-Industrial, U-Utility, F-Farm, L-Lakeshore, T-Timber, M-Mineral

Cass County, Minnesota, for Taxes for the Year 1956.

Table with columns: IN WHOSE NAME ASSESSED, TO WHOM TRANSFERRED, DESCRIPTION OF PROPERTY, TRUE AND FULL VALUATIONS, ASSESSED VALUATIONS, VALUATIONS BY SCHOOL DISTRICTS AS EQUALIZED BY DEPARTMENT OF TAXATION, TAXES, PAID, WHEN PAID, Number of Receipt, March Settlement 1957, June Settlement 1957, November Settlement 1957, Penalty, Collections to First Monday in January 1958, Delinquent on First Monday in January 1958, Total Delinquent Tax and Penalty, REMARKS.

Frank H. Lamphere  
Maude L. Lamphere  
State of Minnesota  
State of Minnesota

Clifford L. & Pearl Thon  
State of Minnesota  
State of Minnesota  
State of Minnesota

State of Minnesota  
State of Minnesota  
State of Minnesota  
Moneta Improvement Co.

Moneta Improvement Co.  
" " "  
State of Minnesota  
State of Minnesota

The Harrows and Top's Part of Lake Roosevelt Trails  
Michigan Bros.  
Township of  
Roosevelt Lake, Minn.









Assessment Roll and Tax List of Real Property in the Town of Crooked Lake

\* Indicate Type of Property: R-Residential, C-Commercial, I-Industrial, U-Utility, F-Farm, L-Lakeshore, T-Timber, M-Mineral

Cass County, Minnesota, for Taxes for the Year 1956.

Table with columns: IN WHOSE NAME ASSESSED, TO WHOM TRANSFERRED, DESCRIPTION OF PROPERTY, TRUE AND FULL VALUATIONS, ASSESSED VALUATIONS, VALUATIONS BY SCHOOL DISTRICTS AS EQUALIZED BY DEPARTMENT OF TAXATION, SOLD FOR TAXES, PAID, WHEN PAID, Number of Receipt, March Settlement 1957, June Settlement 1957, November Settlement 1957, Collections to First Monday in January 1958, Delinquent on First Monday in January 1958, Total Delinquent Tax and Penalty, REMARKS.

[Continued on next page]

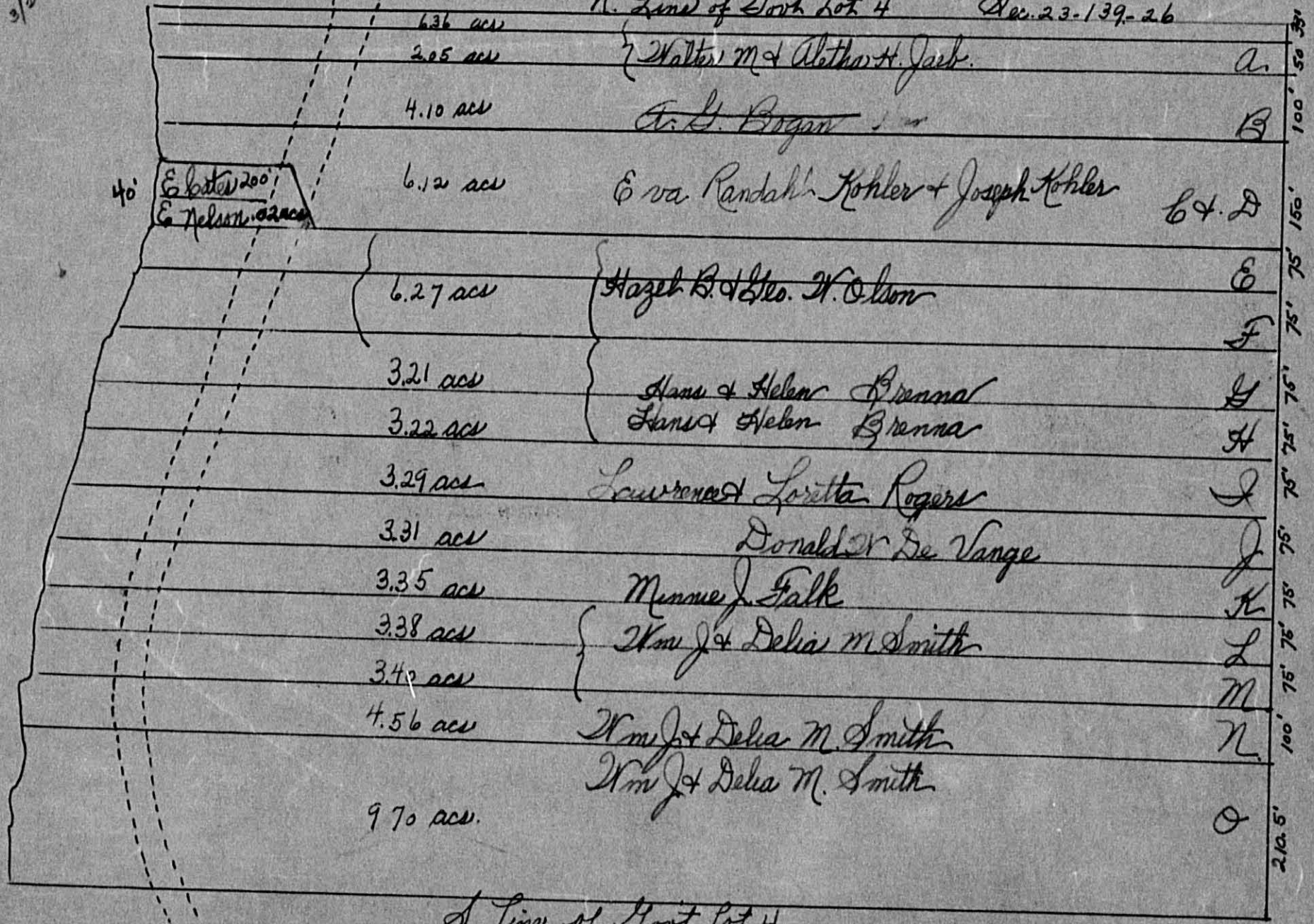
Vertical text on the right edge: The Herrows, and for a part of Lake, Assessor's Office, Mable Bros., Roosevelt & Trails, Town of Crooked Lake, Roosevelt & Lake Field.





40  
3/20/56

N. Line of Gort Lot 4 Dec. 23-139-26



6.36 ac			
2.05 ac	{	Walter M & Althor H. Jack.	A.
4.10 ac		A. G. Bogan	B.
6.12 ac		Eva Randaeh Kohler + Joseph Kohler	C. D.
6.27 ac	{	Hazel B. & Geo. W. Olson	E.
3.21 ac			F.
3.22 ac	{	Hans & Helen Brenna	G.
3.29 ac			H.
3.31 ac		Lawrence & Loretta Rogers	I.
3.35 ac		Donald R De Vange	J.
3.38 ac		Menue J. Falk	K.
3.42 ac	{	Wm J & Delia M. Smith	L.
4.56 ac			M.
		Wm J & Delia M. Smith	N.
		Wm J & Delia M. Smith	O.
9.70 ac.			

S. Line of Gort Lot 4.





















Assessment Roll and Tax List of Real Property in the Town of Crooked Lake

Indicate Type of Property: R-Residential, C-Commercial, I-Industrial, U-Utility, F-Farm, L-Lakeshore, T-Timber, M-Mineral

Cass County, Minnesota, for Taxes for the Year 1956.

Table with columns: IN WHOSE NAME ASSESSED, TO WHOM TRANSFERRED, DESCRIPTION OF PROPERTY, TRUE AND FULL VALUATIONS, ASSESSED VALUATIONS, VALUATIONS BY SCHOOL DISTRICTS AS EQUALIZED BY DEPARTMENT OF TAXATION, TAXES, PAID, WHEN PAID, Number of Receipt, March Settlement 1957, June Settlement 1957, November Settlement 1957, Collections to First Monday in January 1958, Delinquent on First Monday in January 1958, Total Delinquent Tax and Penalty, REMARKS.

Vertical text on the right edge of the page, including names like 'The Herrows' and 'Iovanarielights'.

Assessment Roll and Tax List of Real Property in the Town of Crooked Lake

Indicate Type of Property: R-Residential, C-Commercial, I-Industrial, U-Utility, F-Farm, L-Lakeshore, T-Timber, M-Mineral

Cass County, Minnesota, for Taxes for the Year 1956.

Table with columns: IN WHOSE NAME ASSESSED, TO WHOM TRANSFERRED, DESCRIPTION OF PROPERTY, TRUE AND FULL VALUATIONS, ASSESSED VALUATIONS, VALUATIONS BY SCHOOL DISTRICTS AS EQUALIZED BY DEPARTMENT OF TAXATION, TAXES, PAID, WHEN PAID, Number of Receipt, March Settlement 1957, June Settlement 1957, November Settlement 1957, Collections to First Monday in January 1958, Delinquent on First Monday in January 1958, Total Delinquent Tax and Penalty, REMARKS.

Vertical text on the right edge: The Herons and Top's Part of Lake Roosevelt Trails, Municipal Pros., Town of Lake Roosevelt Trails, Town of Lake Roosevelt, Lake Field.

Assessment Roll and Tax List of Real Property in the Town of Spoon Lake

\* Indicate Type of Property: R-Residential, C-Commercial, I-Industrial, U-Utility, F-Farm, L-Lakeshore, T-Timber, M-Mineral

Cass County, Minnesota, for Taxes for the Year 1956.

Table with columns: IN WHOSE NAME ASSESSED, TO WHOM TRANSFERRED, DESCRIPTION OF PROPERTY, TRUE AND FULL VALUATIONS, ASSESSED VALUATIONS, VALUATIONS BY SCHOOL DISTRICTS AS EQUALIZED BY DEPARTMENT OF TAXATION, SOLD FOR TAXES, PAID, WHEN PAID, March Settlement 1957, June Settlement 1957, November Settlement 1957, Collections to First Monday in January 1958, Delinquent on First Monday in January 1958, Total Delinquent Tax and Penalty, REMARKS.



Lot 3  
Sec. 35-139-26

638.24'

661.16'

727.68'

19. AF Anderson & Lula Anderson

18. E. O. Berry & Carol A. Berry

17. Anthony & Charlene O. Berry  
Cottage

16. E. O. Berry

15. SW & Ethel O. Berry

14. E. O. Berry & M. Berry

638.12'

C. Lohse

SMOKEY HOLLOW LAKE

40 Scale



73-07-26































Assessment Roll and Tax List of Real Property in the Town of Crooked Lake

Form 5C (56) ... Indicate Type of Property: R-Residential, C-Commercial, I-Industrial, U-Utility, F-Farm, L-Lakeshore, T-Timber, M-Mineral

Table with columns: IN WHOSE NAME ASSESSED, TO WHOM TRANSFERRED, DESCRIPTION OF PROPERTY, TRUE AND FULL VALUATIONS, ASSESSED VALUATIONS, FINAL EQUALIZED VALUE. Includes handwritten entries for properties like 'Sandy Lake, Roosevelt Trails'.

Cass County, Minnesota, for Taxes for the Year 1956.

Table with columns: SOLD FOR TAXES, VALUATIONS BY SCHOOL DISTRICTS AS EQUALIZED BY DEPARTMENT OF TAXATION, Tax including State Homestead, State Tax on Non-Homestead, SPECIAL TAXES, TOTAL TAXES, PAID, WHEN PAID, Number of Receipt, March Settlement 1957, June Settlement 1957, November Settlement 1957, Collections to First Monday in January 1958, Delinquent on First Monday in January 1958, Total Delinquent Tax and Penalty, REMARKS.

Vertical text on the left edge: Auditor's Plat of Lake Roosevelt, Plat of Outlots, Iwanaga Outlots, Roosevelt Lake Hotel

Vertical text on the right edge: Auditor's Plat of Lake Roosevelt, Plat of Outlots, Iwanaga Outlots, Roosevelt Lake Hotel

Assessment Roll and Tax List of Real Property in the Town of Crooked Lake

Cass County, Minnesota, for Taxes for the Year 1956.

Form 5C (56) WILSON-DAVIS COMPANY, MINNEAPOLIS. \* Indicate Type of Property: R-Residential, C-Commercial, I-Industrial, U-Utility, F-Farm, L-Lakeshore, T-Timber, M-Mineral

Table with columns: IN WHOSE NAME ASSESSED, TO WHOM TRANSFERRED, DESCRIPTION OF PROPERTY, TRUE AND FULL VALUATIONS, ASSESSED VALUATIONS, VALUATIONS BY SCHOOL DISTRICTS AS EQUALIZED BY DEPARTMENT OF TAXATION, SOLD FOR TAXES, SPECIAL TAXES, TOTAL TAXES, PAID, WHEN PAID, Number of Receipt, March Settlement 1957, June Settlement 1957, November Settlement 1957, Collections to First Monday in January 1958, Delinquent on First Monday in January 1958, Total Delinquent Tax and Penalty, REMARKS.

Auditor's Plat of Lake Washburn Outlots, Plat of Outlots, Iowan Heights, Roosevelt Lake Heights, Lake

Roosevelt Lake Heights, Iowan Heights, Roosevelt Lake Heights, Lake









Assessment Roll and Tax List of Real Property in the Town of *Carroll Lake*

Cass County, Minnesota, for Taxes for the Year 1956.

Form 5C (56) MILLER-DAVIS COMPANY, MINNEAPOLIS. Indicate Type of Property: R-Residential, C-Commercial, I-Industrial, U-Utility, F-Farm, L-Lakeshore, T-Timber, M-Mineral

Table with columns: IN WHOSE NAME ASSESSED, TO WHOM TRANSFERRED, DESCRIPTION OF PROPERTY, TRUE AND FULL VALUATIONS, ASSESSED VALUATIONS, VALUATIONS BY SCHOOL DISTRICTS AS EQUALIZED BY DEPARTMENT OF TAXATION, SOLD FOR TAXES, SPECIAL TAXES, TOTAL TAXES, PAID, WHEN PAID, Number of Receipt, March Settlement, June Settlement, November Settlement, Collections to First Monday in January 1958, Delinquent on First Monday in January 1958, Total Delinquent Tax and Penalty, REMARKS.

Auditor's Plat of Lake Washburn Outlots, The Narrows, Roosevelt Trails, State of Minnesota, Plat of Outlots, Town of Helguts, Roosevelt Lake Field

Roosevelt Trails, Plat of Outlots, Town of Helguts, Roosevelt Lake

Assessment Roll and Tax List of Real Property in the Town of *Goodhue Lake*

Cass County, Minnesota, for Taxes for the Year 1956.

Form 5C (56) ILLINOIS STATE DEPARTMENT OF REVENUE \* Indicate Type of Property: R-Residential, C-Commercial, I-Industrial, U-Utility, F-Farm, L-Lakeshore, T-Timber, M-Mineral

Table with columns: IN WHOSE NAME ASSESSED, TO WHOM TRANSFERRED, SUBDIVISION, TRUE AND FULL VALUATIONS (RURAL, ALL OTHER, MACHINERY), ASSESSED VALUATIONS, VALUATIONS BY SCHOOL DISTRICTS AS EQUALIZED BY DEPARTMENT OF TAXATION, TAXES, PAID, WHEN PAID, March Settlement, June Settlement, November Settlement, Collections to First Monday in January 1958, Delinquent on First Monday in January 1958, Total Delinquent Tax and Penalty, REMARKS.

Auditor's Plat of Lake Washburn Outlots

Roosevelt Lake Plat of Outlots Town of Goodhue

































Assessment Roll and Tax List of Real Property in the Town of Crooked Lake

Cass County, Minnesota, for Taxes for the Year 1956.

Form 50 (56) MILLER-BAYNE COMPANY, MINNEAPOLIS

\* Indicate Type of Property: R-Residential, C-Commercial, I-Industrial, U-Utility, F-Farm, L-Lakeshore, T-Timber, M-Mineral

Table with columns: IN WHOSE NAME ASSESSED, TO WHOM TRANSFERRED, SUBDIVISION, DESCRIPTION OF PROPERTY, TRUE AND FULL VALUATIONS (LAND, BUILDINGS, MACHINERY, TOTAL), ASSESSED VALUATIONS (RURAL, ALL OTHER, MACHINERY, TOTAL), FINAL EQUALIZED VALUE, SOLD FOR TAXES, VALUATIONS BY SCHOOL DISTRICTS AS EQUALIZED BY DEPARTMENT OF TAXATION, SPECIAL TAXES, TOTAL TAXES, PAID, WHEN PAID, Number of Receipt, March Settlement 1957, June Settlement 1957, November Settlement 1957, Collections to First Monday in January 1958, Delinquent on First Monday in January 1958, Total Delinquent Tax and Penalty, REMARKS.

Auditor's Plat of Lake Washburn Outlots, Tingle Bros. Lake Roosevelt Shores, Tingle Bros. Lake Roosevelt, Plat of Outlots of L. Washburn, Plat of Lot Part of Roosevelt Heights, Iowa Heights, Roosevelt

Sunset Beach on Roosevelt Lake, Plat of Part of Tingle Bros. Lake Roosevelt









Assessment Roll and Tax List of Real Property in the Town of Crooked Lake

Indicate Type of Property: R-Residential, C-Commercial, I-Industrial, U-Utility, F-Farm, L-Lakeshore, T-Timber, M-Mineral

Cass County, Minnesota, for Taxes for the Year 1956.

Table with columns: IN WHOSE NAME ASSESSED, TO WHOM TRANSFERRED, SUBDIVISION, DESCRIPTION OF PROPERTY, TRUE AND FULL VALUATIONS, ASSESSED VALUATIONS, VALUATIONS BY SCHOOL DISTRICTS AS EQUALIZED BY DEPARTMENT OF TAXATION, SOLD FOR TAXES, PAID, WHEN PAID, Number of Receipt, March Settlement, June Settlement, November Settlement, Collections to First Monday in January 1958, Delinquent on First Monday in January 1958, Total Delinquent Tax and Penalty, REMARKS.

Vertical text on the left edge: Roosevelt Soo, Washburn Pines, Minnigale Bros, Brown's Washburn, Jankov

Vertical text on the right edge: Address Book, Sunset Beach on Roosevelt Lake, Part of Part of, Roosevelt Shores in Lake Washburn, Lakes-A-Penry















Assessment Roll and Tax List of Real Property in the Town of Crooked Lake

Cass County, Minnesota, for Taxes for the Year 1956.

Form 30 (56) DALLAS-BATH COMPANY, MINNEAPOLIS. \* Indicate Type of Property: R-Residential, C-Commercial, I-Industrial, U-Utility, F-Farm, L-Lakeshore, T-Timber, M-Mineral

Table with columns: IN WHOSE NAME ASSESSED, TO WHOM TRANSFERRED, SUBDIVISION, DESCRIPTION OF PROPERTY, TRUE AND FULL VALUATIONS, ASSESSED VALUATIONS, VALUATIONS BY SCHOOL DISTRICTS AS EQUALIZED BY DEPARTMENT OF TAXATION, TAXES, PAID, WHEN PAID, Number of Receipt, March Settlement 1957, June Settlement 1957, November Settlement 1957, Collections to First Monday in January 1958, Delinquent on First Monday in January 1958, Total Delinquent Tax and Penalty, REMARKS.

Vertical text on the left margin: Roosevelt, Brown's, Outlot, Sunset Beach, etc.

Vertical text on the right margin: Part of, Andrew Bay, Lusher, etc.

Assessment Roll and Tax List of Real Property in the Town of Crooked Lake

Cass County, Minnesota, for Taxes for the Year 1956.

Form 5C (56) MINN. STATE DEPT. OF REVENUE, ST. PAUL, MINN. \* Indicate Type of Property: R-Residential, C-Commercial, I-Industrial, U-Utility, F-Farm, L-Lakeshore, T-Timber, M-Mineral

Table with columns: IN WHOSE NAME ASSESSED, TO WHOM TRANSFERRED, SUBDIVISION, DESCRIPTION OF PROPERTY, TRUE AND FULL VALUATIONS, ASSESSED VALUATIONS, VALUATIONS BY SCHOOL DISTRICTS AS EQUALIZED BY DEPARTMENT OF TAXATION, SOLD FOR TAXES, PAID, WHEN PAID, Number of Receipt, March Settlement 1957, June Settlement 1957, November Settlement 1957, Penalty, Collections to First Monday in January 1958, Delinquent on First Monday in January 1958, Total Delinquent Tax and Penalty, REMARKS.

Grant & Doris M. Nordahl  
D.M. & Doris M. Nordahl  
Harold B. & Basie K. Champlin

Josephine E. Meyer, Jr.  
Verlie & Olga Ricknell  
Thorlief N. & Eleanor R. Andersen

Harold B. & Basie K. Champlin  
Harold B. & Basie K. Champlin

PAID IN FULL APR 1 1957  
PAID IN FULL FEB 26 1957  
PAID IN FULL FEB 26 1957  
PAID IN FULL FEB 26 1957  
PAID IN FULL FEB 26 1957  
PAID IN FULL FEB 26 1957  
PAID IN FULL FEB 26 1957  
PAID IN FULL FEB 26 1957  
PAID IN FULL APR 26 1957  
PAID IN FULL MAY 31 1957  
PAID IN FULL FEB 26 1957  
PAID IN FULL FEB 26 1957  
PAID IN FULL FEB 26 1957  
PAID IN FULL FEB 26 1957  
PAID IN FULL FEB 26 1957



Assessment Roll and Tax List of Real Property in the Town of Crooked Lake

\* Indicate Type of Property: R-Residential, C-Commercial, I-Industrial, U-Utility, F-Farm, L-Lakeshore, T-Timber, M-Mineral

Cass County, Minnesota, for Taxes for the Year 1956.

Table with columns: IN WHOSE NAME ASSESSED, TO WHOM TRANSFERRED, SUBDIVISION, TRUE AND FULL VALUATIONS, ASSESSED VALUATIONS, VALUATIONS BY SCHOOL DISTRICTS AS EQUALIZED BY DEPARTMENT OF TAXATION, SOLD FOR TAXES, SPECIAL TAXES, TOTAL TAXES, PAID, WHEN PAID, Number of Receipt, March Settlement 1957, June Settlement 1957, November Settlement 1957, Collection to First Monday in January 1958, Delinquent on First Monday in January 1958, Total Delinquent Tax and Penalty, REMARKS.

Andersen Bay

Robert J. & Pearl C. Flegel, Robert A. Flegel, Harold B. & Florence + Elvira Johnson, Thorevald Andersen

196 496 693 231 231

4294 126 4420

4420

Vertical text on the right edge of the page, including 'Lusher's Bay' and other property-related notes.



Assessment Roll and Tax List of Real Property in the Town of Crooked Lake

Indicate Type of Property: R-Residential, C-Commercial, I-Industrial, U-Utility, F-Farm, L-Lakeshore, T-Timber, M-Mineral

Cass County, Minnesota, for Taxes for the Year 1956.

Table with columns: IN WHOSE NAME ASSESSED, TO WHOM TRANSFERRED, DESCRIPTION OF PROPERTY, TRUE AND FULL VALUATIONS, ASSESSED VALUATIONS, VALUATIONS BY SCHOOL DISTRICTS AS EQUALIZED BY DEPARTMENT OF TAXATION, SOLD FOR TAXES, PAID, WHEN PAID, March Settlement 1957, June Settlement 1957, November Settlement 1957, Collections to First Monday in January 1958, Delinquent on First Monday in January 1958, Total Delinquent Tax and Penalty, REMARKS.



Assessment Roll and Tax List of Real Property in the Town of Crooked Lake

Indicate Type of Property: R-Residential, C-Commercial, I-Industrial, U-Utility, F-Farm, L-Lakeshore, T-Timber, M-Mineral

Cass County, Minnesota, for Taxes for the Year 1956.

Form 5C (56) JULY 1955 EDITION, MINNAPOLIS

Main table with columns: IN WHOSE NAME ASSESSED, TO WHOM TRANSFERRED, DESCRIPTION OF PROPERTY, TRUE AND FULL VALUATIONS, ASSESSED VALUATIONS, VALUATIONS BY SCHOOL DISTRICTS AS EQUALIZED BY DEPARTMENT OF TAXATION, SOLD FOR TAXES, SPECIAL TAXES, TOTAL TAXES, PAID, WHEN PAID, Number of Receipt, March Settlement 1957, June Settlement 1957, November Settlement 1957, Collections to First Monday in January 1958, Delinquent on First Monday in January 1958, Total Delinquent Tax and Penalty, REMARKS.

Vertical text on the left margin: Sunset Beach, Lusher's Bay, Kavli's Wood Lake Shores, Roseville Shores, only on...

Vertical text on the right margin: A.G. Pagan's Commission, Roseville Lake Addition, Olafson's Plat, One...

Assessment Roll and Tax List of Real Property in the Town of Crooked Lake

\* Indicate Type of Property: R-Residential, C-Commercial, I-Industrial, U-Utility, F-Farm, L-Lakeshore, T-Timber, M-Mineral

Cass County, Minnesota, for Taxes for the Year 1956.

Table with columns: IN WHOSE NAME ASSESSED, TO WHOM TRANSFERRED, DESCRIPTION OF PROPERTY, TRUE AND FULL VALUATIONS, ASSESSED VALUATIONS, VALUATIONS BY SCHOOL DISTRICTS AS EQUALIZED BY DEPARTMENT OF TAXATION, TAXES, PAID, WHEN PAID, etc.

Vertical text on the left margin: Sunset Bay, Lusher's Bay, Kavli's Wood Lake Shores, etc.

Vertical text on the right margin: Smokey Hollow Addition, A.G. Jensen's Company's Orion's Flat, etc.



Assessment Roll and Tax List of Real Property in the Town of Crooked Lake

Indicate Type of Property: R-Residential, C-Commercial, I-Industrial, U-Utility, F-Farm, L-Lakeshore, T-Timber, M-Mineral

Cass County, Minnesota, for Taxes for the Year 1956.

Table with columns: IN WHOSE NAME ASSESSED, TO WHOM TRANSFERRED, DESCRIPTION OF PROPERTY, TRUE AND FULL VALUATIONS, ASSESSED VALUATIONS, VALUATIONS BY SCHOOL DISTRICTS AS EQUALIZED BY DEPARTMENT OF TAXATION, SOLD FOR TAXES, SPECIAL TAXES, TOTAL TAXES, PAID, WHEN PAID, Number of Receipt, March Settlement 1957, June Settlement 1957, Penalty, November Settlement 1957, Penalty, Collections to First Monday in January 1958, Penalty, Delinquent on First Monday in January 1958, Total Delinquent Tax and Penalty, REMARKS.

Handwritten entries in the 'IN WHOSE NAME ASSESSED' and 'TO WHOM TRANSFERRED' columns, including names like Anna Wingard, Carl & Mary L. Kauli, Alfred L. Olson, and Carl Arthur Olson & Oliver Johnson.

Handwritten entries in the 'DESCRIPTION OF PROPERTY' column, including 'Kauli's Wood Lake Shores' and lot numbers 61 through 80.

Printed columns for 'TRUE AND FULL VALUATIONS' and 'ASSESSED VALUATIONS', containing numerical values for land, buildings, and machinery.

Printed columns for 'VALUATIONS BY SCHOOL DISTRICTS AS EQUALIZED BY DEPARTMENT OF TAXATION', 'SOLD FOR TAXES', 'SPECIAL TAXES', 'TOTAL TAXES', 'PAID', 'WHEN PAID', and settlement/penalty information.

Vertical text on the left edge of the page, including 'Sunset Bay Lusher's Bay' and 'Kauli's Wood Lake Shores'.

Vertical text on the right edge of the page, including 'A.G. Ferguson's Corner of Roosevelt Lake Addition' and 'O'Brien's Plat'.





Assessment Roll and Tax List of Real Property in the Town of Crooked Lake

\* Indicate Type of Property: R-Residential, C-Commercial, I-Industrial, U-Utility, F-Farm, L-Lakeshore, T-Timber, M-Mineral

Cass County, Minnesota, for Taxes for the Year 1956.

Form 5C (56) MINN. STATE UNIVERSITY, MINNEAPOLIS

Table with columns: IN WHOSE NAME ASSESSED, TO WHOM TRANSFERRED, DESCRIPTION OF PROPERTY, TRUE AND FULL VALUATIONS, ASSESSED VALUATIONS, VALUATIONS BY SCHOOL DISTRICTS AS EQUALIZED BY DEPARTMENT OF TAXATION, SOLD FOR TAXES, SPECIAL TAXES, TOTAL TAXES, PAID, WHEN PAID, Number of Receipt, March Settlement 1957, June Settlement 1957, Penalty, November Settlement 1957, Collections to First Monday in January 1958, Delinquent on First Monday in January 1958, Total Delinquent Tax and Penalty, REMARKS.

(Book Lot 3-See 23-139-26)

W. G. Bogem Co

Laurel Allen Palas

R. G. Bogem Co

Kathy M. & Althea H. Jacob

W. G. Bogem Company  
Roosevelt Lake Addition

1 1  
2 2  
3 3  
4 4  
5 5  
6 6  
7 7  
8 8  
9 9  
10 10  
11 11  
12 12  
13 13  
14 14

Table with columns: No. School District, Indicate Homestead, Indicate Agricultural, Indicate Property, LAND Exclusive of Structures and Improvements, BUILDINGS and Other Structures, MACHINERY Permanently Attached to Real Estate, TOTAL True and Full Value, RURAL (Homestead, Over \$4,000 and Non-Homestead, Timber Land Class 3e), ALL OTHER (Homestead, Over \$4,000 and Non-Homestead, MACHINERY permanently Attached to Real Estate), TOTAL ASSESSED VALUE, Total Assessed Value as Equalized by the Board of Review, FINAL EQUALIZED VALUE.

Table with columns: SOLD FOR TAXES, VALUATIONS BY SCHOOL DISTRICTS AS EQUALIZED BY DEPARTMENT OF TAXATION (District No., Rate, District No., Rate, District No., Rate, District No., Rate, District No., Rate), Tax including State Homestead, State Tax on Non-Homestead, SPECIAL TAXES, TOTAL TAXES, PAID, WHEN PAID (Month, Day, Year), Number of Receipt, March Settlement 1957, June Settlement 1957, Penalty, November Settlement 1957, Collections to First Monday in January 1958, Delinquent on First Monday in January 1958, Total Delinquent Tax and Penalty, REMARKS.

SOLD FOR TAXES

Vertical text on the right edge of the page, including '104' and other markings.



Assessment Roll and Tax List of Real Property in the Town of Crystal Lake

Indicate Type of Property: R-Residential, C-Commercial, I-Industrial, U-Utility, F-Farm, L-Lakeshore, T-Timber, M-Mineral

Cass County, Minnesota, for Taxes for the Year 1956.

Table with columns: IN WHOSE NAME ASSESSED, TO WHOM TRANSFERRED, DESCRIPTION OF PROPERTY, TRUE AND FULL VALUATIONS, ASSESSED VALUATIONS, VALUATIONS BY SCHOOL DISTRICTS AS EQUALIZED BY DEPARTMENT OF TAXATION, SOLD FOR TAXES, PAID, WHEN PAID, Number of Receipt, March Settlement 1957, June Settlement 1957, November Settlement 1957, Collections to First Monday in January 1958, Delinquent on First Monday in January 1958, Total Delinquent Tax and Penalty, REMARKS.

Vertical text on the left margin: Sunset Beach, Lusher's Bay, O'Brien's Plat, Roosevelt Shores, etc.

Vertical text on the right margin: Part of Lot 10, 11, 12, 13, 14, 15, 16, 17, 18, 19, 20, etc.



Assessment Roll and Tax List of Real Property in the Town of Crooked Lake

Indicate Type of Property: R-Residential, C-Commercial, I-Industrial, U-Utility, F-Farm, L-Lakeshore, T-Timber, M-Mineral

Form 50 (56) ILLINOIS STATE BOARD OF TAXATION

Table with columns: IN WHOSE NAME ASSESSED, TO WHOM TRANSFERRED, DESCRIPTION OF PROPERTY, TRUE AND FULL VALUATIONS, ASSESSED VALUATIONS (RURAL, ALL OTHER), and FINAL EQUALIZED VALUE. Includes handwritten entries for Melvin L. & Margaret M. O'Brien, James M. & Viola M. Olds, Eugene L. & Viola L. O'Brien, and Clinton W. & Irene N. Nelson.

205 674 879 126 83 209

Cass County, Minnesota, for Taxes for the Year 1956.

Table with columns: SOLD FOR TAXES, VALUATIONS BY SCHOOL DISTRICTS AS EQUALIZED BY DEPARTMENT OF TAXATION, Tax including State Homestead, State Tax on Non-Homestead, SPECIAL TAXES, TOTAL TAXES, PAID, WHEN PAID, Number of Receipt, March Settlement 1957, June Settlement 1957, Penalty, November Settlement 1957, Penalty, Collections to First Monday in January 1958, Penalty, Delinquent on First Monday in January 1958, Total Delinquent Tax and Penalty, REMARKS. Includes handwritten tax amounts and payment dates.

H 126 83 209 4406 46 4452

2981 1471

Smoker Hollow Add'l. Wagon Fetterjohn Lake Shore Rees Anchorage Onai

















