

Assessment & Tax List - 1955  
Crooked Lake











TABULAR SCHEDULE OF VALUATIONS,

LEVIED IN THE Town OF Crooked Lake

School District No.	VALUATION BY SCHOOL DISTRICTS				RATE OF STATE TAXES		RATE OF COUNTY TAXES								RATE OF TOWN TAXES								RATE OF	
	Agri-cultural Lands	Non-Agri-cultural Lands	Personal Property	Total Value of all Property except Money and Credits	Total Rate of State Tax	Rev.	R. & B.	Wel-fare	Bonds and Int.	<i>Court House Bldg Fund</i>	Total Rate of County Tax	Rev.	R. & B.	Drag Tax	State Loan	<i>Fire</i>	Total Rate of Town Tax	Local	Spe-cial	State Loan	Defi-ciency	Tui-tion	Trans-portion	<i>E. O.</i>
Dollars	Dollars	Dollars	Dollars	Mills	Mills	Mills	Mills	Mills	Mills	Mills	Mills	Mills	Mills	Mills	Mills	Mills	Mills	Mills	Mills	Mills	Mills	Mills	Mills	Mills
<i>C1</i>	<i>38601</i>	<i>18,503</i>	<i>2,294</i> <i>72,673.9</i>	<i>64,137</i>	<i>3.98</i>	<i>28.01</i>	<i>14.01</i>	<i>49.83</i>	<i>9.97</i>	<i>2.00</i>	<i>103.82</i>	<i>3.9</i>	<i>12.86</i>	<i>1.</i>	<i>2.</i>	<i>19.76</i>	<i>1.25</i>	<i>1.50</i>	<i>27.47</i>	<i>27.47</i>	<i>1.08</i>	<i>1.08</i>	<i>6.46</i>	<i>6.46</i>
Assessed Value	Rural	All Other	Personal Property	Total																				
Homestead	<i>11,373</i>			<i>11,373</i>																				
Non-Homestead	<i>40,731</i>		<i>7,033</i>	<i>52,764</i>																				
Total	<i>57,104</i>		<i>7,033</i>	<i>64,137</i>																				

N. H. *5.17*  
*9.15*

RATES AND TAXES

COUNTY OF CASS, STATE OF MINNESOTA

*188.57*  
*5.17*  
*193.74*

SCHOOL TAXES	LOCAL 1 MILL AND SPECIAL SCHOOL TAXES BY DISTRICTS										ALL OTHER TAXES	
	Total Rate of Sch'l Tax	Total Rate of all Taxes	Local 1 Mill	Special	State Loan	Def. Drang.	<i>E. O.</i>	Total School Taxes	FUNDS	Rate	Amounts	
Mills	Mills	Mills	Mills	Mills	Mills	Mills	Mills	Mills				
<i>61.01</i>	<i>188.57</i>	<i>38.90</i>	<i>97.238</i>	<i>10.68</i>	<i>45</i>	<i>4200</i>	<i>25,126</i>	<i>237,299</i>	State - Non-Homestead,		<i>27,452</i>	
<i>86.01</i>	<i>213.57</i>	<i>25.24</i>	<i>126.210</i>	<i>6.93</i>	<i>40</i>	<i>2,726</i>	<i>16,306</i>	<i>217,106</i>	State - Homestead,		<i>25,526</i>	
		<i>64.14</i>	<i>223.448</i>	<i>17.61</i>	<i>85</i>	<i>6,926</i>	<i>41,432</i>	<i>454,405</i>	County Revenue,		<i>17,960.00</i>	
									County Road and Bridge,		<i>8,984.46</i>	
									County Welfare,		<i>3,195.25</i>	
									Bonds and Interest		<i>6,394.45</i>	
									<i>Court House Bldg.</i>		<i>1,282.7</i>	
											<i>6,657.43</i>	
									Town Revenue,		<i>2,501.3</i>	
									Town Road and Bridge,		<i>8,248.0</i>	
									Town Drag,		<i>64.14</i>	
									Town State Loan,		<i>1,282.7</i>	
									<i>Fire</i>		<i>1,267.34</i>	
											<i>12,998.60</i>	
									School Local 1 Mill,		<i>64.14</i>	
									School Special,		<i>223,448</i>	
									School State Loan,		<i>17,618.5</i>	
									Deficiency		<i>6,926</i>	
									Tuition		<i>41,432</i>	
									Transportation		<i>45,440.5</i>	
									<i>E. O.</i>			

Total Taxes Real Estate *11,467.92*  
Pers. Prop. *1,530.68*  
Total *12,998.60*

Total Number of Acres *6879.52*  
State of Minnesota, ss. *L. C. Peterson*  
COUNTY OF CASS Auditor of said County and State aforesaid, do hereby certify that the foregoing is a true and correct Schedule, showing the valuation of all the taxable property, in the town of Crooked Lake, in said County, the several rates of Taxation and Totals of the several Tax Funds levied thereon for the year A. D. 1955.

Witness my hand and official seal, this 2nd day of January, A. D. 1955.  
*L. C. Peterson*  
County Auditor.  
*By Helen Bilben, Deputy*

SEAL

or Ceased to be Homesteads

Sec. or Lot	Town or Block	Range	Number of Acres of Land	
			Acres	100ths

Map of Cass County, Minn. to Roosevelt Trail  
Inglede Bros.  
Glen & Heights  
Roosevelt Trail



COLLECTIONS OF TAXES OF 1956

Town

OF Crooked Lake

CASS COUNTY, MINNESOTA

FUNDS	MARCH SETTLEMENT 1956	JUNE SETTLEMENT 1956	NOV. SETTLEMENT 1956	Amount Collected from Nov. 15 <sup>th</sup> to First Monday in Jan. 1957	REDUCTIONS	Total Reductions and Collected	BALANCE UNCOLLECTED	ADDITIONS	Total Uncollected to First Monday in January, 1957
State-Non-Homestead,	4270	17169	4409	129					
State-Homestead,	3328	15508	4410	601					
County Revenue,	23424	109138	31034	692					
County Road and Bridge,	11716	54588	15523	362					
County Welfare,	41671	124756	55210	1402					
County Bond and Interest,	1338	58847	11046	198					
County House,	1473	7773	2216	64					
Town Revenue,	3261	15196	4321	73					
Town Road and Bridge,	10754	50608	14248	300					
Town Drag,	836	3896	1108	25					
Town State Loan,	1673	7793	2216	55					
Tree									
School Local 1 Mill,	836	3897	1108	26					
School Special,	34762	130225	37751	1127					
School State Loan,									
Deficiency	22972	107034	30436	529					
Tuition									
Transportation	904	4208	1196	18					
C.G.	5403	25170	7157	244					
	175821	784727	223389	5365					

	SCHOOL DISTRICT NO.	LOCAL 1 MILL	SPECIAL	STATE LOAN	Deficiency	C. O.	Transport	TOTALS
MARCH SETTLEMENT	a-c/ na-c/	282 857	7050 27712		7746 15226	1822 3581	305 599	17205 47672
	Totals	836	34762		22972	5403	904	64877
JUNE SETTLEMENT	a-c/ na-c/	2584 1313	64585 65630		70977 36057	16681 8479	2790 1418	157637 112897
	Totals	3897	130225		107034	25170	4208	270534
NOVEMBER SETTLEMENT	a-c/ na-c/	706 402	17648 20102		19392 11044	4560 2597	762 434	43069 34579
	Totals	1108	37751		30436	7157	1196	77648
NOVEMBER to JANUARY	a-c/ na-c/	06 20	150 977		624 405	57 187	04 14	341 1603
	Totals	26	1127		529	244	18	1944
ADDITIONS	School District No.							
	Totals							
REDUCTIONS	School District No.							
	Totals							

Homesteads Ceased to be Homesteads

Sec. or Lot	Town or Block	Range	Number of Acres of Land
			Acres 100ths

Map 1881-1882, 1883, 1884, 1885, 1886, 1887, 1888, 1889, 1890, 1891, 1892, 1893, 1894, 1895, 1896, 1897, 1898, 1899, 1900, 1901, 1902, 1903, 1904, 1905, 1906, 1907, 1908, 1909, 1910, 1911, 1912, 1913, 1914, 1915, 1916, 1917, 1918, 1919, 1920, 1921, 1922, 1923, 1924, 1925, 1926, 1927, 1928, 1929, 1930, 1931, 1932, 1933, 1934, 1935, 1936, 1937, 1938, 1939, 1940, 1941, 1942, 1943, 1944, 1945, 1946, 1947, 1948, 1949, 1950, 1951, 1952, 1953, 1954, 1955, 1956, 1957, 1958, 1959, 1960, 1961, 1962, 1963, 1964, 1965, 1966, 1967, 1968, 1969, 1970, 1971, 1972, 1973, 1974, 1975, 1976, 1977, 1978, 1979, 1980, 1981, 1982, 1983, 1984, 1985, 1986, 1987, 1988, 1989, 1990, 1991, 1992, 1993, 1994, 1995, 1996, 1997, 1998, 1999, 2000, 2001, 2002, 2003, 2004, 2005, 2006, 2007, 2008, 2009, 2010, 2011, 2012, 2013, 2014, 2015, 2016, 2017, 2018, 2019, 2020, 2021, 2022, 2023, 2024, 2025, 2026, 2027, 2028, 2029, 2030, 2031, 2032, 2033, 2034, 2035, 2036, 2037, 2038, 2039, 2040, 2041, 2042, 2043, 2044, 2045, 2046, 2047, 2048, 2049, 2050, 2051, 2052, 2053, 2054, 2055, 2056, 2057, 2058, 2059, 2060, 2061, 2062, 2063, 2064, 2065, 2066, 2067, 2068, 2069, 2070, 2071, 2072, 2073, 2074, 2075, 2076, 2077, 2078, 2079, 2080, 2081, 2082, 2083, 2084, 2085, 2086, 2087, 2088, 2089, 2090, 2091, 2092, 2093, 2094, 2095, 2096, 2097, 2098, 2099, 2100, 2101, 2102, 2103, 2104, 2105, 2106, 2107, 2108, 2109, 2110, 2111, 2112, 2113, 2114, 2115, 2116, 2117, 2118, 2119, 2120, 2121, 2122, 2123, 2124, 2125, 2126, 2127, 2128, 2129, 2130, 2131, 2132, 2133, 2134, 2135, 2136, 2137, 2138, 2139, 2140, 2141, 2142, 2143, 2144, 2145, 2146, 2147, 2148, 2149, 2150, 2151, 2152, 2153, 2154, 2155, 2156, 2157, 2158, 2159, 2160, 2161, 2162, 2163, 2164, 2165, 2166, 2167, 2168, 2169, 2170, 2171, 2172, 2173, 2174, 2175, 2176, 2177, 2178, 2179, 2180, 2181, 2182, 2183, 2184, 2185, 2186, 2187, 2188, 2189, 2190, 2191, 2192, 2193, 2194, 2195, 2196, 2197, 2198, 2199, 2200, 2201, 2202, 2203, 2204, 2205, 2206, 2207, 2208, 2209, 2210, 2211, 2212, 2213, 2214, 2215, 2216, 2217, 2218, 2219, 2220, 2221, 2222, 2223, 2224, 2225, 2226, 2227, 2228, 2229, 2230, 2231, 2232, 2233, 2234, 2235, 2236, 2237, 2238, 2239, 2240, 2241, 2242, 2243, 2244, 2245, 2246, 2247, 2248, 2249, 2250, 2251, 2252, 2253, 2254, 2255, 2256, 2257, 2258, 2259, 2260, 2261, 2262, 2263, 2264, 2265, 2266, 2267, 2268, 2269, 2270, 2271, 2272, 2273, 2274, 2275, 2276, 2277, 2278, 2279, 2280, 2281, 2282, 2283, 2284, 2285, 2286, 2287, 2288, 2289, 2290, 2291, 2292, 2293, 2294, 2295, 2296, 2297, 2298, 2299, 2300, 2301, 2302, 2303, 2304, 2305, 2306, 2307, 2308, 2309, 2310, 2311, 2312, 2313, 2314, 2315, 2316, 2317, 2318, 2319, 2320, 2321, 2322, 2323, 2324, 2325, 2326, 2327, 2328, 2329, 2330, 2331, 2332, 2333, 2334, 2335, 2336, 2337, 2338, 2339, 2340, 2341, 2342, 2343, 2344, 2345, 2346, 2347, 2348, 2349, 2350, 2351, 2352, 2353, 2354, 2355, 2356, 2357, 2358, 2359, 2360, 2361, 2362, 2363, 2364, 2365, 2366, 2367, 2368, 2369, 2370, 2371, 2372, 2373, 2374, 2375, 2376, 2377, 2378, 2379, 2380, 2381, 2382, 2383, 2384, 2385, 2386, 2387, 2388, 2389, 2390, 2391, 2392, 2393, 2394, 2395, 2396, 2397, 2398, 2399, 2400, 2401, 2402, 2403, 2404, 2405, 2406, 2407, 2408, 2409, 2410, 2411, 2412, 2413, 2414, 2415, 2416, 2417, 2418, 2419, 2420, 2421, 2422, 2423, 2424, 2425, 2426, 2427, 2428, 2429, 2430, 2431, 2432, 2433, 2434, 2435, 2436, 2437, 2438, 2439, 2440, 2441, 2442, 2443, 2444, 2445, 2446, 2447, 2448, 2449, 2450, 2451, 2452, 2453, 2454, 2455, 2456, 2457, 2458, 2459, 2460, 2461, 2462, 2463, 2464, 2465, 2466, 2467, 2468, 2469, 2470, 2471, 2472, 2473, 2474, 2475, 2476, 2477, 2478, 2479, 2480, 2481, 2482, 2483, 2484, 2485, 2486, 2487, 2488, 2489, 2490, 2491, 2492, 2493, 2494, 2495, 2496, 2497, 2498, 2499, 2500, 2501, 2502, 2503, 2504, 2505, 2506, 2507, 2508, 2509, 2510, 2511, 2512, 2513, 2514, 2515, 2516, 2517, 2518, 2519, 2520, 2521, 2522, 2523, 2524, 2525, 2526, 2527, 2528, 2529, 2530, 2531, 2532, 2533, 2534, 2535, 2536, 2537, 2538, 2539, 2540, 2541, 2542, 2543, 2544, 2545, 2546, 2547, 2548, 2549, 2550, 2551, 2552, 2553, 2554, 2555, 2556, 2557, 2558, 2559, 2560, 2561, 2562, 2563, 2564, 2565, 2566, 2567, 2568, 2569, 2570, 2571, 2572, 2573, 2574, 2575, 2576, 2577, 2578, 2579, 2580, 2581, 2582, 2583, 2584, 2585, 2586, 2587, 2588, 2589, 2590, 2591, 2592, 2593, 2594, 2595, 2596, 2597, 2598, 2599, 2600, 2601, 2602, 2603, 2604, 2605, 2606, 2607, 2608, 2609, 2610, 2611, 2612, 2613, 2614, 2615, 2616, 2617, 2618, 2619, 2620, 2621, 2622, 2623, 2624, 2625, 2626, 2627, 2628, 2629, 2630, 2631, 2632, 2633, 2634, 2635, 2636, 2637, 2638, 2639, 2640, 2641, 2642, 2643, 2644, 2645, 2646, 2647, 2648, 2649, 2650, 2651, 2652, 2653, 2654, 2655, 2656, 2657, 2658, 2659, 2660, 2661, 2662, 2663, 2664, 2665, 2666, 2667, 2668, 2669, 2670, 2671, 2672, 2673, 2674, 2675, 2676, 2677, 2678, 2679, 2680, 2681, 2682, 2683, 2684, 2685, 2686, 2687, 2688, 2689, 2690, 2691, 2692, 2693, 2694, 2695, 2696, 2697, 2698, 2699, 2700, 2701, 2702, 2703, 2704, 2705, 2706, 2707, 2708, 2709, 2710, 2711, 2712, 2713, 2714, 2715, 2716, 2717, 2718, 2719, 2720, 2721, 2722, 2723, 2724, 2725, 2726, 2727, 2728, 2729, 2730, 2731, 2732, 2733, 2734, 2735, 2736, 2737, 2738, 2739, 2740, 2741, 2742, 2743, 2744, 2745, 2746, 2747, 2748, 2749, 2750, 2751, 2752, 2753, 2754, 2755, 2756, 2757, 2758, 2759, 2760, 2761, 2762, 2763, 2764, 2765, 2766, 2767, 2768, 2769, 2770, 2771, 2772, 2773, 2774, 2775, 2776, 2777, 2778, 2779, 2780, 2781, 2782, 2783, 2784, 2785, 2786, 2787, 2788, 2789, 2790, 2791, 2792, 2793, 2794, 2795, 2796, 2797, 2798, 2799, 2800, 2801, 2802, 2803, 2804, 2805, 2806, 2807, 2808, 2809, 2810, 2811, 2812, 2813, 2814, 2815, 2816, 2817, 2818, 2819, 2820, 2821, 2822, 2823, 2824, 2825, 2826, 2827, 2828, 2829, 2830, 2831, 2832, 2833, 2834, 2835, 2836, 2837, 2838, 2839, 2840, 2841, 2842, 2843, 2844, 2845, 2846, 2847, 2848, 2849, 2850, 2851, 2852, 2853, 2854, 2855, 2856, 2857, 2858, 2859, 2860, 2861, 2862, 2863, 2864, 2865, 2866, 2867, 2868, 2869, 2870, 2871, 2872, 2873, 2874, 2875, 2876, 2877, 2878, 2879, 2880, 2881, 2882, 2883, 2884, 2885, 2886, 2887, 2888, 2889, 2890, 2891, 2892, 2893, 2894, 2895, 2896, 2897, 2898, 2899, 2900, 2901, 2902, 2903, 2904, 2905, 2906, 2907, 2908, 2909, 2910, 2911, 2912, 2913, 2914, 2915, 2916, 2917, 2918, 2919, 2920, 2921, 2922, 2923, 2924, 2925, 2926, 2927, 2928, 2929, 2930, 2931, 2932, 2933, 2934, 2935, 2936, 2937, 2938, 2939, 2940, 2941, 2942, 2943, 2944, 2945, 2946, 2947, 2948, 2949, 2950, 2951, 2952, 2953, 2954, 2955, 2956, 2957, 2958, 2959, 2960, 2961, 2962, 2963, 2964, 2965, 2966, 2967, 2968, 2969, 2970, 2971, 2972, 2973, 2974, 2975, 2976, 2977, 2978, 2979, 2980, 2981, 2982, 2983, 2984, 2985, 2986, 2987, 2988, 2989, 2990, 2991, 2992, 2993, 2994, 2995, 2996, 2997, 2998, 2999, 3000, 3001, 3002, 3003, 3004, 3005, 3006, 3007, 3008, 3009, 3010, 3011, 3012, 3013, 3014, 3015, 3016, 3017, 3018, 3019, 3020, 3021, 3022, 3023, 3024, 3025, 3026, 3027, 3028, 3029, 3030, 3031, 3032, 3033, 3034, 3035, 3036, 3037, 3038, 3039, 3040, 3041, 3042, 3043, 3044, 3045, 3046, 3047, 3048, 3049, 3050, 3051, 3052, 3053, 3054, 3055, 3056, 3057, 3058, 3059, 3060, 3061, 3062, 3063, 3064, 3065, 3066, 3067, 3068, 3069, 3070, 3071, 3072, 3073, 3074, 3075, 3076, 3077, 3078, 3079, 3080, 3081, 3082, 3083, 3084, 3085, 3086, 3087, 3088, 3089, 3090, 3091, 3092, 3093, 3094, 3095, 3096, 3097, 3098, 3099, 3100, 3101, 3102, 3103, 3104, 3105, 3106, 3107, 3108, 3109, 3110, 3111, 3112, 3113, 3114, 3115, 3116, 3117, 3118, 3119, 3120, 3121, 3122, 3123, 3124, 3125, 3126, 3127, 3128, 3129, 3130, 3131, 3132, 3133, 3134, 3135, 3136, 3137, 3138, 3139, 3140, 3141, 3142, 3143, 3144, 3145, 3146, 3147, 3148, 3149, 3150, 3151, 3152, 3153, 3154, 3155, 3156, 3157, 3158, 3159, 3160, 3161, 3162, 3163, 3164, 3165, 3166, 3167, 3168, 3169, 3170, 3171, 3172, 3173, 3174, 3175, 3176, 3177, 3178, 3179, 3180, 3181, 3182, 3183, 3184, 3185, 3186, 3187, 3188, 3189, 3190, 3191, 3192, 3193, 3194, 3195, 3196, 3197, 3198, 3199, 3200, 3201, 3202, 3203, 3204, 3205, 3206, 3207, 3208, 3209, 3210, 3211, 3212, 3213, 3214, 3215, 3216, 3217, 3218, 3219, 3220, 3221, 3222, 3223, 3224, 3225, 3226, 3227, 3228, 3229, 3230, 3231, 3232, 3233, 3234, 3235, 3236, 3237, 3238, 3239, 3240, 3241, 3242, 3243, 3244, 3245, 3246, 3247, 3248, 3249, 3250, 3251, 3252, 3253, 3254, 3255, 3256, 3257, 3258, 3259, 3260, 3261, 3262, 3263, 3264, 3265, 3266, 3267, 3268, 3269, 3270, 3271, 3272, 3273, 3274, 3275, 3276, 3277, 3278, 3279, 3280, 3281, 3282, 3283, 3284, 3285, 3286, 3287, 3288, 3289, 3290, 3291, 3292, 3293, 3294, 3295, 3296, 3297, 3298, 3299, 3300, 3301, 3302, 3303, 3304, 3305, 3306, 3307, 3308, 3309, 3310, 3311, 3312, 3313, 3314, 3315, 3316, 3317, 3318, 3319, 3320, 3321, 3322, 3323, 3324, 3325, 3326, 3327, 3328, 3329, 3330, 3331, 3332, 3333, 3334, 3335, 3336, 3337, 3338, 3339, 3340, 3341, 3342, 3343, 3344, 3345, 3346, 3347, 3348, 3349, 3350, 3351, 3352, 3353, 3354, 3355, 3356, 3357, 3358, 3359, 3360, 3361, 3362, 3363, 3364, 3365, 3366, 3367, 3368, 3369, 3370, 3371, 3372, 3373, 3374, 3375







Assessment Roll and Tax List of Real Property in the Town of Crooked Lake

\*Indicate Type of Property: R-Residential, C-Commercial, I-Industrial, U-Utility, F-Farm

Form SCD (55) MILLER-BYER COMPANY, MINNEAPOLIS

Table with columns: IN WHOSE NAME ASSESSED, TO WHOM TRANSFERRED, SUBDIVISION, TRUE AND FULL VALUATIONS, ASSESSED VALUATIONS, FINAL EQUALIZED VALUE. Includes handwritten entries for Henry J. & Ida M. King and Mimie Bryans Brege.

160

Cass County, Minnesota, for Taxes for the Year 1955.

Table with columns: SOLD FOR TAXES, VALUATIONS BY SCHOOL DISTRICTS AS EQUALIZED BY DEPARTMENT OF TAXATION, Tax including State Homestead, State Tax on Non-Homestead, SPECIAL TAXES, TOTAL TAXES, PAID, WHEN PAID, Number of Receipt, March Settlement 1956, June Settlement 1956, November Settlement 1956, Penalty, Collections to First Monday in January 1957, Delinquent on First Monday in January 1957, Total Delinquent Tax and Penalty, REMARKS. Includes handwritten entries for property 7, 8, 12, and 20.

The Morris

Large West Bank of Lake Superior

Engels Bros. 10 Hoopstail Trails

Dean & Heights Hoopstail Ln







Assessment Roll and Tax List of Real Property in the Lower of Brookside Lake

\*Indicate Type of Property: R-Residential, C-Commercial, I-Industrial, U-Utility, F-Farm

Form SCD (55) MILLER-DAY COMPANY, MINNEAPOLIS

IN WHOSE NAME ASSESSED	TO WHOM TRANSFERRED	DESCRIPTION OF PROPERTY		TRUE AND FULL VALUATIONS										FINAL EQUALIZED VALUE
				ASSESSED VALUATIONS					Total Assessed Value as Equalized by the Board of Review					
				LAND Exclusive of Structures and Improvements	BUILDINGS and Other Structures	MACHINERY Permanently Attached to Real Estate	TOTAL True and Full Value	RURAL		ALL OTHER	MACHINERY Permanently Attached to Real Estate	TOTAL ASSESSED VALUE		
Acres	100ths	Dollars	Dollars	Dollars	Dollars	Dollars	Dollars	Dollars	Dollars	Dollars	Dollars	Dollars	Dollars	
No. School District	Indicate Homestead Yes or No	Indicate Agricultural Yes or No	Indicate Type of Property	Homestead Up to \$4,000 20%	Over \$4,000 and Non-Homestead 33 1/3%	Homestead Up to \$4,000 25%	Over \$4,000 and Non-Homestead 40%	33 1/3%						
1														
2														
3														
4														
5														
6														
7														
8														
9														
10														
11														
12														
13														
14														
15														
16														
17														
18														
19														
20														

Cass County, Minnesota, for Taxes for the Year 1955.

SOLD FOR TAXES	VALUATIONS BY SCHOOL DISTRICTS AS EQUALIZED BY DEPARTMENT OF TAXATION						Tax including State Homestead	State Tax on Non-Homestead	SPECIAL TAXES	TOTAL TAXES	PAID	WHEN PAID	Number of Receipt	March Settlement 1956	June Settlement 1956	Penalty	November Settlement 1956	Penalty	Collections to First Monday in January 1957	Penalty	Delinquent on First Monday in January 1957	Total Delinquent Tax and Penalty	REMARKS
	District No.	District No.	District No.	District No.	District No.	District No.																	
	Rate	Rate	Rate	Rate	Rate	Rate																	
	Dollars	Dollars	Dollars	Dollars	Dollars	Dollars	\$ cts.	\$ cts.	\$ cts.	\$ cts.	Month Day Year		\$ cts.	\$ cts.	\$ cts.	\$ cts.	\$ cts.	\$ cts.	\$ cts.	\$ cts.	\$ cts.	\$ cts.	
1																							
2																							
3																							
4																							
5																							
6																							
7																							
8																							
9																							
10																							
11																							
12																							
13																							
14																							
15																							
16																							
17																							
18																							
19																							
20																							

The Narrows

Land of the Plains Plats 97 to 100

Meadale Bros. own a Heights in Rosevelt La







Assessment Roll and Tax List of Real Property in the Town of Brookdale Lake, of Brookdale Lake, Minnesota. \*Indicate Type of Property: R-Residential, C-Commercial, I-Industrial, U-Utility, F-Farm

Form SCD (55) MILLER-GUTH COMPANY, MINNEAPOLIS

Table with columns: IN WHOSE NAME ASSESSED, TO WHOM TRANSFERRED, DESCRIPTION OF PROPERTY, TRUE AND FULL VALUATIONS, ASSESSED VALUATIONS, and FINAL EQUALIZED VALUE. Includes handwritten entries for William D. Stiles, State of Minnesota, Clover Land Co., and Moneta Improvements Co.

Cass County, Minnesota, for Taxes for the Year 1955.

Table with columns: VALUATIONS BY SCHOOL DISTRICTS AS EQUALIZED BY DEPARTMENT OF TAXATION, TAXES, PAID, WHEN PAID, and REMARKS. Includes handwritten entries for tax payments and dates like '2nd Half Paid OCT 31 1958'.



























































Assessment Roll and Tax List of Real Property in the Town of Crooked Lake, Cass County, Minnesota, for Taxes for the Year 1955.

Form SCD (55) BULLOCK COMPANY, MINNEAPOLIS

\*Indicate Type of Property: R-Residential, C-Commercial, I-Industrial, U-Utility, F-Farm

Table with columns: IN WHOSE NAME ASSESSED, TO WHOM TRANSFERRED, DESCRIPTION OF PROPERTY, TRUE AND FULL VALUATIONS, ASSESSED VALUATIONS, and FINAL EQUALIZED VALUE. Includes handwritten entries for property owners like Frank H. Lampshire and Clifford L. & Pearl Phoe.

Cass County, Minnesota, for Taxes for the Year 1955.

Table with columns: VALUATIONS BY SCHOOL DISTRICTS AS EQUALIZED BY DEPARTMENT OF TAXATION, TAX INCLUDING STATE HOMESTEAD, SPECIAL TAXES, TOTAL TAXES, PAID, WHEN PAID, Number of Receipt, March Settlement 1956, June Settlement 1956, November Settlement 1956, Collections to First Monday in January 1957, Delinquent on First Monday in January 1957, Total Delinquent Tax and Penalty, and REMARKS. Includes handwritten tax amounts and payment dates.

240

261

6810 190

2000

1542

1542

3916

The Kerkovs

LAMM BROS. & CO. REAL ESTATE BROKERS

Over & Holdings Hoosier & Trails



















Assessment Roll and Tax List of Real Property in the Town of Crooked Lake, Cass County, Minnesota, for Taxes for the Year 1955.

Form 50D (55) WILCO-DAVIS COMPANY, MINNEAPOLIS

\*Indicate Type of Property: R-Residential, C-Commercial, I-Industrial, U-Utility, F-Farm

Table with columns: IN WHOSE NAME ASSESSED, TO WHOM TRANSFERRED, DESCRIPTION OF PROPERTY, TRUE AND FULL VALUATIONS (LAND, BUILDINGS, MACHINERY, TOTAL), ASSESSED VALUATIONS (RURAL, ALL OTHER), TOTAL ASSESSED VALUE, and FINAL EQUALIZED VALUE.

Cass County, Minnesota, for Taxes for the Year 1955.

Table with columns: SOLD FOR TAXES, VALUATIONS BY SCHOOL DISTRICTS AS EQUALIZED BY DEPARTMENT OF TAXATION, Tax including State Homestead, State Tax on Non-Homestead, SPECIAL TAXES, TOTAL TAXES, PAID, WHEN PAID, Number of Receipt, March Settlement 1956, June Settlement 1956, November Settlement 1956, Penalty, Collections to First Monday in January 1957, Delinquent on First Monday in January 1957, Total Delinquent Tax and Penalty, and REMARKS.

(Continued on next page)

Vertical text on the right edge of the page, including 'The Harrows' and 'Lambert's Plots'.



Assessment Roll and Tax List of Real Property in the Town of Crooked Lake, Cass County, Minnesota, for Taxes for the Year 1955.

Form 5CD (55) MILLER-DAY COMPANY, MINNEAPOLIS

Table with columns: IN WHOSE NAME ASSESSED, TO WHOM TRANSFERRED, DESCRIPTION OF PROPERTY, TRUE AND FULL VALUATIONS (LAND, BUILDINGS, MACHINERY, TOTAL), ASSESSED VALUATIONS (RURAL, ALL OTHER, MACHINERY), TOTAL ASSESSED VALUE, and FINAL EQUALIZED VALUE.

Cass County, Minnesota, for Taxes for the Year 1955.

Table with columns: SOLD FOR TAXES, VALUATIONS BY SCHOOL DISTRICTS AS EQUALIZED BY DEPARTMENT OF TAXATION, Tax including State Homestead, State Tax on Non-Homestead, SPECIAL TAXES, TOTAL TAXES, PAID, WHEN PAID, Number of Receipt, March Settlement 1956, June Settlement 1956, November Settlement 1956, Collections to First Monday in January 1957, Delinquent on First Monday in January 1957, Total Delinquent Tax and Penalty, and REMARKS.

(Continued on next page)

Vertical text on the right edge of the page, including 'The Herrows' and 'Addy for a Plat of...'.



Assessment Roll and Tax List of Real Property in the Town of Leewood Lake, of Leewood Lake, \*Indicate Type of Property: R-Residential, C-Commercial, I-Industrial, U-Utility, F-Farm

Form SCD (55) BAKER-BAY COMPANY, MINNEAPOLIS

Table with columns: IN WHOSE NAME ASSESSED, TO WHOM TRANSFERRED, DESCRIPTION OF PROPERTY, TRUE AND FULL VALUATIONS, ASSESSED VALUATIONS, FINAL EQUALIZED VALUE. Includes handwritten entries for various lots and owners like Walter M. & Althea H. Jacob.

5934

Cass County, Minnesota, for Taxes for the Year 1955.

Table with columns: VALUATIONS BY SCHOOL DISTRICTS AS EQUALIZED BY DEPARTMENT OF TAXATION, Tax including State Homestead, State Tax on Non-Homestead, SPECIAL TAXES, TOTAL TAXES, PAID, WHEN PAID, Number of Receipt, March Settlement, June Settlement, November Settlement, Penalty, Collections to First Monday in January 1957, Delinquent on First Monday in January 1957, Total Delinquent Tax and Penalty, REMARKS. Includes handwritten entries for various lots and owners.

H 337 781 1118

21086 402

21488

17727

3761

The Herrows

Add to the Plat of the Leewood Lake

Over a Height of 100 feet



Assessment Roll and Tax List of Real Property in the Town of *Brookdale Lake*

Form SCD (55) WISCONSIN DEPARTMENT OF REVENUE

\*Indicate Type of Property: R-Residential, C-Commercial, I-Industrial, U-Utility, F-Farm

Table with columns: IN WHOSE NAME ASSESSED, TO WHOM TRANSFERRED, DESCRIPTION OF PROPERTY, TRUE AND FULL VALUATIONS, ASSESSED VALUATIONS, and FINAL EQUALIZED VALUE. Includes handwritten entries for Carl O. R. Edberg & George Pittolla, Carl Edberg, Henry L. Young, Charles E. Eggers, Edward C. Della Schermacher, and H. L. Co.

Cass County, Minnesota, for Taxes for the Year 1955.

Table with columns: VALUATIONS BY SCHOOL DISTRICTS AS EQUALIZED BY DEPARTMENT OF TAXATION, TAXES, PAID, WHEN PAID, Number of Receipt, March Settlement 1956, June Settlement 1956, November Settlement 1956, Collections to First Monday in January 1957, Delinquent on First Monday in January 1957, Total Delinquent Tax and Penalty, and REMARKS. Includes handwritten entries for 'PAID IN FULL' and 'PAID FOR TAXES'.

The Barrows

Land for Sale of Roosevelt & Tralls

Over a Heights Roosevelt & Lake



Assessment Roll and Tax List of Real Property in the Town of Crooked Lake, Cass County, Minnesota, for Taxes for the Year 1955.

Form 5CD (55) MILLER-DAVIS COMPANY, MINNEAPOLIS

\*Indicate Type of Property: R-Residential, C-Commercial, I-Industrial, U-Utility, F-Farm

Table with columns: IN WHOSE NAME ASSESSED, TO WHOM TRANSFERRED, SUBDIVISION, TRUE AND FULL VALUATIONS, ASSESSED VALUATIONS, and FINAL EQUALIZED VALUE. Includes handwritten entries for Anton Robert & Esther J. Anderson and Rosalie V. Taylor.

Cass County, Minnesota, for Taxes for the Year 1955.

Table with columns: VALUATIONS BY SCHOOL DISTRICTS AS EQUALIZED BY DEPARTMENT OF TAXATION, TAXES, PAID, WHEN PAID, and various settlement/penalty columns. Includes handwritten tax amounts and payment dates.

The Narrows

Landi Washburn & Sons - 111 Ringdale Bros. - 111 Roosevelt & Trails

Lowen & Helge - 111 Roosevelt & Trails



























Assessment Roll and Tax List of Real Property in the Town of Crooked Lake, Cass County, Minnesota, for Taxes for the Year 1955.

Table with columns: IN WHOSE NAME ASSESSED, TO WHOM TRANSFERRED, SUBDIVISION, TRUE AND FULL VALUATIONS, ASSESSED VALUATIONS, FINAL EQUALIZED VALUE. Includes handwritten entries for 'Moneta Improvement Co.' and 'State of Minnesota'.

Cass County, Minnesota, for Taxes for the Year 1955.

Table with columns: SOLD FOR TAXES, VALUATIONS BY SCHOOL DISTRICTS AS EQUALIZED BY DEPARTMENT OF TAXATION, SPECIAL TAXES, TOTAL TAXES, PAID, WHEN PAID, Number of Receipt, March Settlement 1956, June Settlement 1956, November Settlement 1956, Collections to First Monday in January 1957, Delinquent on First Monday in January 1957, Total Delinquent Tax and Penalty, REMARKS. Includes handwritten entries for '1000 28', '1028', '53', '11308', '5654'.

Vertical text on the right edge of the page, including 'The Harrows' and 'Lambert's'.



Assessment Roll and Tax List of Real Property in the Down of Crooked Lake,  
\*Indicate Type of Property: R-Residential, C-Commercial, I-Industrial, U-Utility, F-Farm

Form 5CD (55) HILLIS-DAY COMPANY, MINNEAPOLIS

IN WHOSE NAME ASSESSED	TO WHOM TRANSFERRED	DESCRIPTION OF PROPERTY					No. School District	Indicate Homestead Yes or No	Indicate Agricultural Yes or No	* Indicate Type of Property	TRUE AND FULL VALUATIONS				ASSESSED VALUATIONS					FINAL EQUALIZED VALUE		
		SUBDIVISION	Sec. or Lot	Town or Block	Rng	Number of Acres of Land					LAND Exclusive of Structures and Improvements	BUILDINGS and Other Structures	MACHINERY Permanently Attached to Real Estate	TOTAL True and Full Value	RURAL		ALL OTHER		MACHINERY Permanently Attached to Real Estate		TOTAL ASSESSED VALUE	Total Assessed Value as Equalized by the Board of Review
															Homestead	Over \$4,000 and Non-Homestead	Homestead	Over \$4,000 and Non-Homestead				
															Up to \$4,000 20%	33 1/3%	Up to \$4,000 25%	40%				
Acres	100ths	Dollars	Dollars	Dollars	Dollars	Dollars	Dollars	Dollars	Dollars	Dollars	Dollars	Dollars	Dollars	Dollars	Dollars							
Moneta Improvement Co.		NE 1/4 of NE 1/4	31	26	40																	
"	"	NW 1/4 of NE 1/4			40																	
State of Minnesota		SW 1/4 of NE 1/4																				
Moneta Improvement Co.		SE 1/4 of NE 1/4			40																	
"	"				40																	
State of Minnesota		NE 1/4 of NW 1/4																				
State of Minnesota		NW 1/4 of NW 1/4																				
State of Minnesota		SW 1/4 of NW 1/4																				
State of Minnesota		SE 1/4 of NW 1/4																				
A. G. Kaulis		Lot 3 NE 1/4 of SW 1/4 less plat			16.48																	
"	"	Lot 1 NW 1/4 of SW 1/4 " "			38.70																	
"	"	Lot 2 SW 1/4 of SW 1/4 " "			14.88																	
		SE 1/4 of SW 1/4																				
Anna W. Olson		NE 1/4 of SE 1/4 less plat			40																	
"	"	Lot 4 NW 1/4 of SE 1/4 less plat & less 14.5 ac			24.78																	
Emil F. & Martha M. Berg		14.5 acres SW 1/4 of SE 1/4 of Lot 4 part of plat			14.50																	
A. G. Kaulis		Lot 5 SE 1/4 of SE 1/4 less plat & less part 29																				
Alfred L. Olson		Part of Lot 5																				

33834

Cass County, Minnesota, for Taxes for the Year 1955.

SOLD FOR TAXES	VALUATIONS BY SCHOOL DISTRICTS AS EQUALIZED BY DEPARTMENT OF TAXATION						Tax including State Homestead	State Tax on Non-Homestead	SPECIAL TAXES	TOTAL TAXES	PAID	WHEN PAID	Number of Receipt	March Settlement 1956	June Settlement 1956	Penalty	November Settlement 1956	Penalty	Collections to First Monday in January 1957	Penalty	Delinquent on First Monday in January 1957	Total Delinquent Tax and Penalty	REMARKS
	District No.	District No.	District No.	District No.	District No.	District No.																	
	Rate	Rate	Rate	Rate	Rate	Rate																	
	Mills	Mills	Mills	Mills	Mills	Mills																	
Dollars	Dollars	Dollars	Dollars	Dollars	Dollars	\$ cts.	\$ cts.	\$ cts.	\$ cts.	\$ cts.	Month Day Year	\$ cts.	\$ cts.	\$ cts.	\$ cts.	\$ cts.	\$ cts.	\$ cts.	\$ cts.	\$ cts.			
1							1000	28		1028	1	2nd Half Paid OCT 31 1956 1st Half Paid MAY 31 1956	1023 <sup>30</sup> 1199 <sup>6</sup>		1028								
2							1000	28		1028	2	2nd Half Paid OCT 31 1956 1st Half Paid MAY 31 1956	1023 <sup>30</sup> 1199 <sup>6</sup>		1028								
3											3												
4							1000	28		1028	4	2nd Half Paid OCT 31 1956 1st Half Paid MAY 31 1956	1023 <sup>30</sup> 1199 <sup>6</sup>		514								
5											5												
6							1000	28		1028	6	2nd Half Paid OCT 31 1956 1st Half Paid MAY 31 1956	1023 <sup>30</sup> 1199 <sup>6</sup>		514								
7											7												
8											8												
9											9												
10											10												
11							1000	28		1028	11	PAID IN FULL MAY 31 1956	10217		1028								
12							1000	28		1028	12	PAID IN FULL APR 27 1956	5845		1028								
13							1000	28		1028	13	PAID IN FULL MAY 31 1956	10217		1028								
14											14												
15											15												
16							1000	28		1028	16	PAID IN FULL MAY 31 1956	10217		1028								
17							1000	28		1028	17	PAID IN FULL SEP 17 1956 Penalty AUG 8 1956	13514				1028	26				penalty 264	
18							378	10		388	18	PAID IN FULL MAY 31 1956	8094		388								
19							1000	28		1028	19	PAID IN FULL MAY 31 1956	10217		1028								
20											20												
							550	290		10668						7584							

The Narrows  
Lambert Washburn Plats of  
1/2 Inglede Bros.  
Town & Heights  
Roosevelt Trails  
Roosevelt Plats  
Roosevelt Plats







Assessment Roll and Tax List of Real Property in the Town of Crooked Lake, Minnesota

Table with columns: IN WHOSE NAME ASSESSED, TO WHOM TRANSFERRED, SUBDIVISION, TRUE AND FULL VALUATIONS, ASSESSED VALUATIONS, FINAL EQUALIZED VALUE. Includes handwritten entries for property owners like Kenneth D. & Mae M. Angus and L.D. Williams.

Cass County, Minnesota, for Taxes for the Year 1955.

Table with columns: VALUATIONS BY SCHOOL DISTRICTS AS EQUALIZED BY DEPARTMENT OF TAXATION, Tax including State Homestead, SPECIAL TAXES, TOTAL TAXES, PAID, WHEN PAID, Number of Receipt, March Settlement, June Settlement, November Settlement, Collections to First Monday in January, Delinquent on First Monday in January, Total Delinquent Tax and Penalty, REMARKS. Includes handwritten notes like '1st half paid' and '2nd half paid'.



Assessment Roll and Tax List of Real Property in the Town of Crooked Lake, Cass County, Minnesota, for Taxes for the Year 1955. \*Indicate Type of Property: R-Residential, C-Commercial, I-Industrial, U-Utility, F-Farm

Form 501 (55) WILCOX-DAVIS COMPANY, MINNEAPOLIS

Table with columns: IN WHOSE NAME ASSESSED, TO WHOM TRANSFERRED, SUBDIVISION, TRUE AND FULL VALUATIONS, ASSESSED VALUATIONS, FINAL EQUALIZED VALUE. Includes handwritten entries for Edward Lillian Wilkaste, Louise A. Busch, Lamont D. Williams, etc.

Cass County, Minnesota, for Taxes for the Year 1955.

Table with columns: SOLD FOR TAXES, VALUATIONS BY SCHOOL DISTRICTS AS EQUALIZED BY DEPARTMENT OF TAXATION, Tax Including State Homestead, State Tax on Non-Homestead, SPECIAL TAXES, TOTAL TAXES, PAID, WHEN PAID, Number of Receipt, March Settlement 1956, June Settlement 1956, November Settlement 1956, Collections to First Monday in January 1957, Delinquent on First Monday in January 1957, Total Delinquent Tax and Penalty, REMARKS. Includes handwritten entries for tax payments and dates.

Vertical text on the right edge of the page, including 'The Narrows' and 'Lambert's Pl...'

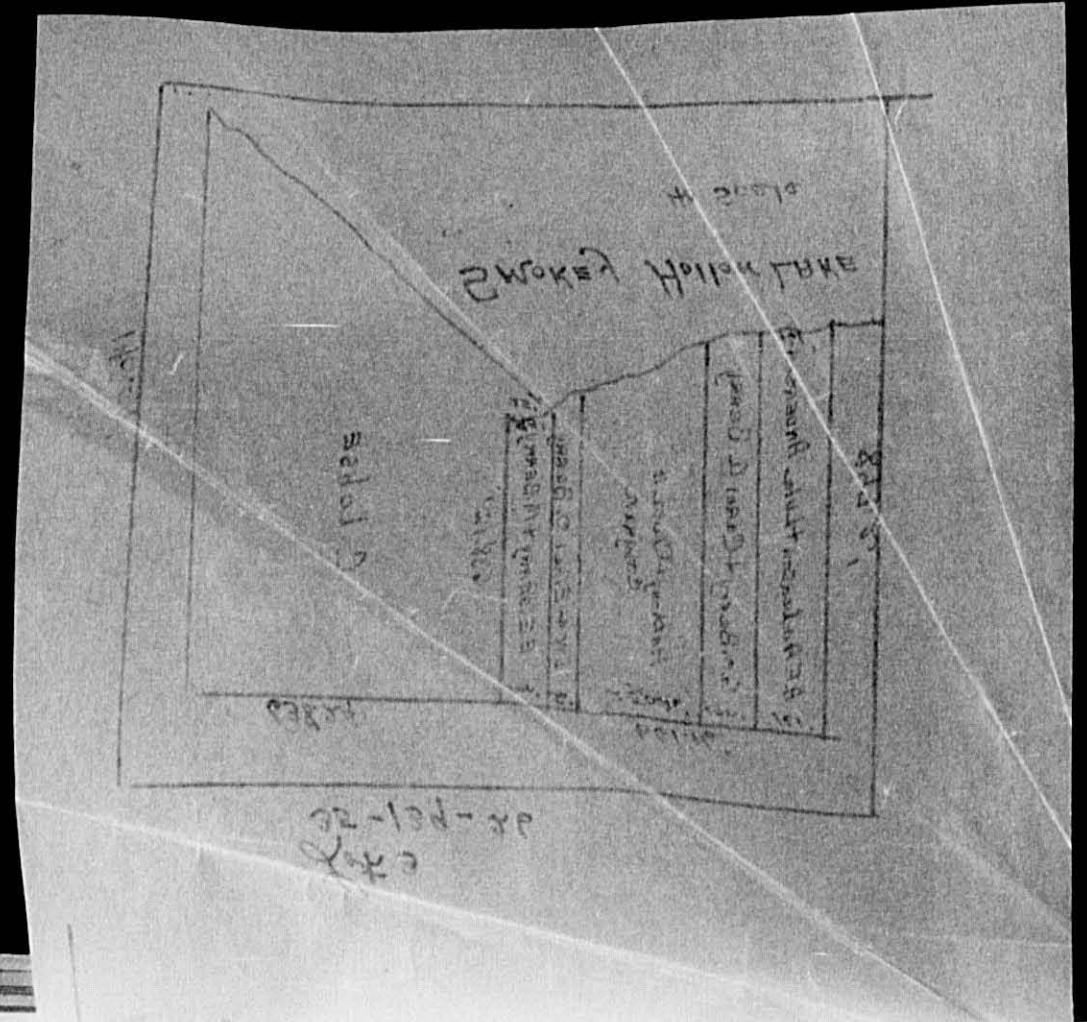






Assessment Roll and Tax List of Real Property in the Town of Crooked Lake, Cass County, Minnesota, for Taxes for the Year 1955.

Table with columns: IN WHOSE NAME ASSESSED, TO WHOM TRANSFERRED, DESCRIPTION OF PROPERTY, TRUE AND FULL VALUATIONS, ASSESSED VALUATIONS (RURAL, ALL OTHER), TOTAL ASSESSED VALUE, and FINAL EQUALIZED VALUE.



Cass County, Minnesota, for Taxes for the Year 1955.

Table with columns: VALUATIONS BY SCHOOL DISTRICTS AS EQUALIZED BY DEPARTMENT OF TAXATION, TAXES (SOLD FOR, PAID FOR), PAID, WHEN PAID, Number of Receipt, March Settlement, June Settlement, November Settlement, Collections to First Monday in January 1957, Delinquent on First Monday in January 1957, Total Delinquent Tax and Penalty, and REMARKS.











Assessment Roll and Tax List of Real Property in the \_\_\_\_\_ of \_\_\_\_\_, \_\_\_\_\_, Minnesota. \*Indicate Type of Property: R-Residential, C-Commercial, I-Industrial, U-Utility, F-Farm

Form 5CD (55) WILF-SAYN COMPANY, MINNEAPOLIS

Table with columns: IN WHOSE NAME ASSESSED, TO WHOM TRANSFERRED, DESCRIPTION OF PROPERTY (Subdivision, Sec. of Lot, Town or Block, Range, Acres, 100ths), TRUE AND FULL VALUATIONS (LAND, BUILDINGS, MACHINERY, TOTAL), ASSESSED VALUATIONS (RURAL: Homestead, Over \$4,000; ALL OTHER: Homestead, Over \$4,000; MACHINERY), TOTAL ASSESSED VALUE, Total Assessed Value as Equalized by the Board of Review, FINAL EQUALIZED VALUE.

Cass County, Minnesota, for Taxes for the Year 1955.

Table with columns: SOLD FOR TAXES, VALUATIONS BY SCHOOL DISTRICTS AS EQUALIZED BY DEPARTMENT OF TAXATION (District No., Rate, Mills), Tax including State Homestead, State Tax on Non-Homestead, SPECIAL TAXES, TOTAL TAXES, PAID, WHEN PAID (Month, Day, Year), Number of Receipt, March Settlement 1956, June Settlement 1956, November Settlement 1956, Penalty, Collections to First Monday in January 1957, Delinquent on First Monday in January 1957, Total Delinquent Tax and Penalty, REMARKS.

The Harrows

Added for 1/2 Plat of Roosevelt Bros. Roosevelt & Traill

Lower Heights Roosevelt & Traill



















Assessment Roll and Tax List of Real Property in the Town of Crystal Lake

\*Indicate Type of Property: R-Residential, C-Commercial, I-Industrial, U-Utility, F-Farm

Form 5C (55) MILLER-GAYNE COMPANY, MINNEAPOLIS

Table with columns: IN WHOSE NAME ASSESSED, TO WHOM TRANSFERRED, SUBDIVISION, DESCRIPTION OF PROPERTY, TRUE AND FULL VALUATIONS, ASSESSED VALUATIONS, FINAL EQUALIZED VALUE.

Auditor's Plat of Lake Washburn Outlots

4090

Cass County, Minnesota, for Taxes for the Year 1955.

Table with columns: SOLD FOR TAXES, VALUATIONS BY SCHOOL DISTRICTS AS EQUALIZED BY DEPARTMENT OF TAXATION, Tax including State Homestead, State Tax on Non-Homestead, SPECIAL TAXES, TOTAL TAXES, PAID, WHEN PAID, Number of Receipt, March Settlement 1956, June Settlement 1956, Penalty, November Settlement 1956, Penalty, Collections to First Monday in January 1957, Delinquent on First Monday in January 1957, Total Delinquent Tax and Penalty, REMARKS.

Roosvelt & Co

Tring's Prop. Lake Washburn Outlot A of Auditor's Plat of Lake Washburn Outlots

Roosvelt & Co

Roosvelt & Co



















Assessment Roll and Tax List of Real Property in the Town of Crooked Lake, Cass County, Minnesota, for Taxes for the Year 1955.

Form 5C (55) WILSON-JAY COMPANY, MINNEAPOLIS

\*Indicate Type of Property: R-Residential, C-Commercial, I-Industrial, U-Utility, F-Farm

Table with columns: IN WHOSE NAME ASSESSED, TO WHOM TRANSFERRED, SUBDIVISION, TRUE AND FULL VALUATIONS, ASSESSED VALUATIONS, FINAL EQUALIZED VALUE. Includes handwritten entries for Roosevelt Trails and other properties.

Table with columns: SOLD FOR TAXES, VALUATIONS BY SCHOOL DISTRICTS AS EQUALIZED BY DEPARTMENT OF TAXATION, SPECIAL TAXES, TOTAL TAXES, PAID, WHEN PAID, Number of Receipt, March Settlement 1956, June Settlement 1956, November Settlement 1956, Collections to First Monday in January 1957, Delinquent on First Monday in January 1957, Total Delinquent Tax and Penalty, REMARKS.

Vertical text on the left margin: The Narrows, Auditor's Plat of Lake Washburn Outlots, Roosevelt Trails, Tinglee Bros., Roosevelt Trails.

Vertical text on the right margin: Roosevelt & Soo, Tinglee Bros., Lake Washburn Outlots, Plat of Lake Wash. Outlots, Plat of Lake Wash. Outlots, Tinglee Bros., Plat of Lake Wash. Outlots, Tinglee Bros., Plat of Lake Wash. Outlots.







Assessment Roll and Tax List of Real Property in the Town of Down of Cass County, Minnesota, for Taxes for the Year 1955. \*Indicate Type of Property: R-Residential, C-Commercial, I-Industrial, U-Utility, F-Farm

Form 5C (55) MINN. STATE COMPT. CONTROL

The Narrows Auditor's Plat of Lake Washburn Outlots Tingle's Bros. Roosevelt Trails

Table with columns: IN WHOSE NAME ASSESSED, TO WHOM TRANSFERRED, SUBDIVISION, DESCRIPTION OF PROPERTY, TRUE AND FULL VALUATIONS, ASSESSED VALUATIONS, FINAL EQUALIZED VALUE.

Cass County, Minnesota, for Taxes for the Year 1955.

Table with columns: VALUATIONS BY SCHOOL DISTRICTS AS EQUALIZED BY DEPARTMENT OF TAXATION, TAX INCLUDING STATE HOMESTEAD, SPECIAL TAXES, TOTAL TAXES, PAID, WHEN PAID, Number of Receipt, March Settlement, June Settlement, November Settlement, Collections to First Monday in January 1957, Delinquent on First Monday in January 1957, Total Delinquent Tax and Penalty, REMARKS.

Roosevelt & So... Tingle's Bros. Lake Washburn Outlots Auditor's Plat of Lake Washburn Outlots































Assessment Roll and Tax List of Real Property in the Town of Crooked Lake, Cass County, Minnesota, for Taxes for the Year 1955.

Table with columns: IN WHOSE NAME ASSESSED, TO WHOM TRANSFERRED, SUBDIVISION, TRUE AND FULL VALUATIONS, ASSESSED VALUATIONS, FINAL EQUALIZED VALUE. Includes handwritten entries for Roosevelt Trails and property owners like Gilbert Auren & Linnhilda Auren.

Auditor's Plat of Lake Washburn Outlots

The Narrows

Cass County, Minnesota, for Taxes for the Year 1955.

Table with columns: SOLD FOR TAXES, VALUATIONS BY SCHOOL DISTRICTS AS EQUALIZED BY DEPARTMENT OF TAXATION, TAX INCLUDING STATE HOMESTEAD, SPECIAL TAXES, TOTAL TAXES, PAID, WHEN PAID, Number of Receipt, March Settlement 1956, June Settlement 1956, November Settlement 1956, Penalty, Collections to First Monday in January 1957, Delinquent on First Monday in January 1957, Total Delinquent Tax and Penalty, REMARKS. Includes handwritten entries for Roosevelt Trails and property owners like Gilbert Auren & Linnhilda Auren.

Roosevelt & So. Ringlake Bros. Lake Washburn Outlots

Auditor's Plat of Lake Washburn Outlots



















Assessment Roll and Tax List of Real Property in the Town of Crooked Lake, Cass County, Minnesota, for Taxes for the Year 1955.

Form 50 (55) WILSON-DAY COMPANY, MINNEAPOLIS

\*Indicate Type of Property: R-Residential, C-Commercial, I-Industrial, U-Utility, F-Farm

Table with columns: IN WHOSE NAME ASSESSED, TO WHOM TRANSFERRED, DESCRIPTION OF PROPERTY, TRUE AND FULL VALUATIONS, ASSESSED VALUATIONS, Total Assessed Value as Equalized by the Board of Review, FINAL EQUALIZED VALUE.

Table with columns: VALUATIONS BY SCHOOL DISTRICTS AS EQUALIZED BY DEPARTMENT OF TAXATION, Tax including State Homestead, State Tax on Non-Homestead, SPECIAL TAXES, TOTAL TAXES, PAID, WHEN PAID, Number of Receipt, March Settlement 1956, June Settlement 1956, November Settlement 1956, Collections to First Monday in January 1957, Delinquent on First Monday in January 1957, Total Delinquent Tax and Penalty, REMARKS.

Vertical text on the left margin: The Narrows, Auditor's Plat of Lake Washburn Outlots, Tindles Bros. Roosevelt Trails, Iovana Heights, Roosevelt Lake Heights.

Vertical text on the right margin: Roosevelt & Co., Tindles Bros. Lake Roosevelt Shores, Plat of Lake Washburn Outlots A of Auditor's Plat of Lake Washburn Outlots Addition, Tindles Bros. Lake Lawrence.



Assessment Roll and Tax List of Real Property in the Town of Crooked Lake, Cass County, Minnesota, for Taxes for the Year 1955.

Table with columns: IN WHOSE NAME ASSESSED, TO WHOM TRANSFERRED, SUBDIVISION, TRUE AND FULL VALUATIONS (LAND, BUILDINGS, MACHINERY, TOTAL), ASSESSED VALUATIONS (RURAL, ALL OTHER, MACHINERY, TOTAL ASSESSED), Total Assessed Value, FINAL EQUALIZED VALUE.

Cass County, Minnesota, for Taxes for the Year 1955.

Table with columns: SOLD FOR TAXES, VALUATIONS BY SCHOOL DISTRICTS AS EQUALIZED BY DEPARTMENT OF TAXATION, Tax including State Homestead, State Tax on Non-Homestead, SPECIAL TAXES, TOTAL TAXES, PAID, WHEN PAID, Number of Receipt, March Settlement 1956, June Settlement 1956, November Settlement 1956, Collections to First Monday in January 1957, Delinquent on First Monday in January 1957, Total Delinquent Tax and Penalty, REMARKS.

Vertical text on the left edge of the page: Auditor's Plat of Lake Washburn Outlots, The Narrows, Iowana Heights, Roosevelt Lake Heights.

Vertical text on the right edge of the page: Roosevelt & So, Plat of Lake Washburn Outlots, Auditor's Plat of Lake Washburn Outlots, Lake Lawrence P.











Assessment Roll and Tax List of Real Property in the Town of Wood Lake,  
\*Indicate Type of Property: R-Residential, C-Commercial, I-Industrial, U-Utility, F-Farm

Form 5C (55) WILCO-DAVIS COMPANY, MINNEAPOLIS

IN WHOSE NAME ASSESSED	TO WHOM TRANSFERRED	SUBDIVISION	Sec. or Lot	Town or Block	Rng.	Number of Acres of Land	No. School District	Indicate Homestead Yes or No	Indicate Agricultural Yes or No	Indicate Type of Property	TRUE AND FULL VALUATIONS				ASSESSED VALUATIONS					FINAL EQUALIZED VALUE				
											LAND Exclusive of Structures and Improvements	BUILDINGS and Other Structures	MACHINERY Permanently Attached to Real Estate	TOTAL True and Full Value	RURAL		ALL OTHER				TOTAL ASSESSED VALUE	Total Assessed Value as Equalized by the Board of Review		
															Over \$4,000 and Non-Homestead 20%	Over \$4,000 and Non-Homestead 33 1/3%	Homestead Up to \$4,000 25%	Over \$4,000 and Non-Homestead 40%	MACHINERY Permanently Attached to Real Estate 33 1/3%				Dollars	Dollars
		Roosevelt Shores				Acres					Dollars	Dollars	Dollars	Dollars	Dollars	Dollars	Dollars	Dollars	Dollars	Dollars	Dollars	Dollars		
Jennie L. Anderson	Dingle Lake		1																					
"	"		2																					
Carl M. Carlson, Curt C. Carlson & Francis Wilson			3																					
Bear Ridge Land Co.			4																					
Harold C. & Grace M. Ehlers			5																					
"	"		6																					
"	"		7																					
"	"		8																					
Fred J. Ruppert & Myrtle K. Ruppert			9																					
"	"		10																					
Arvid Peterson			11																					
"	"		12																					
Aidney J. & Frances E. Orr			13																					
Geo. H. & Manilla V. Tessmer			14																					
Jennie L. Lagner & Frank Fishback			15																					
"	"		16																					
Wm. C. & Loretta M. Anderson			17																					
Bear Ridge Land Company			18																					
"	"		19																					
"	"		20																					

Cass County, Minnesota, for Taxes for the Year 1955.

SOLD FOR TAXES	VALUATIONS BY SCHOOL DISTRICTS AS EQUALIZED BY DEPARTMENT OF TAXATION						Tax including State Homestead	State Tax on Non-Homestead	SPECIAL TAXES	TOTAL TAXES	PAID	WHEN PAID	Number of Receipt	March Settlement 1956	June Settlement 1956	Penalty	November Settlement 1956	Penalty	Collections to First Monday in January 1957	Penalty	Delinquent on First Monday in January 1957	Total Delinquent Tax and Penalty	REMARKS
	District No.	District No.	District No.	District No.	District No.	District No.																	
	Rate	Rate	Rate	Rate	Rate	Rate																	
	Dollars	Dollars	Dollars	Dollars	Dollars	Dollars	\$ cts.	\$ cts.	\$ cts.	\$ cts.	Month Day Year		\$ cts.	\$ cts.	\$ cts.	\$ cts.	\$ cts.	\$ cts.	\$ cts.	\$ cts.	\$ cts.	\$ cts.	
1		10					188	06	194	1	PAID IN FULL	MAY 31 1956	7464		194								
2		10					188	06	194	2	PAID IN FULL	MAY 31 1956			194								
3		35					660	18	678	3	PAID IN FULL	SEP 1 2 1956	13958				678	06					
4		35					660	18	678	4	PAID IN FULL	MAY 31 1956	8061		678								
5		H 6					114		114	5											114x	125	
6		H 26					490		490	6	2nd Half Paid	OCT 3 1 1956											
7		H 139					2622		2622	7	1st Half Paid	MAY 31 1956	7851		245		245						
8		H 6					114		114	8	2nd Half Paid	OCT 3 1 1956	15643		1311		1311						
9		10					188	06	194	9	1st Half Paid	MAY 31 1956	8071		57		57						
10		10					188	06	194	10	PAID IN FULL	MAY 31 1956			194								
11		H 11					208		208	11	PAID IN FULL	MAY 31 1956	8069		208								
12		H 7					132		132	12	PAID IN FULL	MAY 31 1956			132								
13		57					1074	30	1104	13	PAID IN FULL	MAY 31 1956	9033		1104								
14		62					1170	32	1202	14	PAID IN FULL	MAY 31 1956	8955		1202								
15		45					848	24	872	15	PAID IN FULL	APR 5 1956			822								
16		10					188	06	194	16	PAID IN FULL	APR 8 1956	7762		194								
17		37					698	18	716	17											716		
18		11					208	06	214	18	PAID IN FULL	MAY 31 1956			214								
19		10					188	06	194	19	PAID IN FULL	MAY 31 1956	8020		194								
20		10					188	06	194	20	PAID IN FULL	MAY 31 1956			194								
		H 195					10314	148	10502						7381		2291				830		
		352																					
		547																					

The Narrows  
Roosevelt Soo  
Roosevelt Beach on  
Roosevelt Lake  
Outlot A of Auditor's Plat of  
Lake Washburn  
Iowa Heights  
Roosevelt Trails  
Roosevelt Heights  
Roosevelt Lake  
Roosevelt Heights

The Narrows  
Roosevelt Soo  
Roosevelt Beach on  
Roosevelt Lake  
Outlot A of Auditor's Plat of  
Lake Washburn  
Iowa Heights  
Roosevelt Trails  
Roosevelt Heights  
Roosevelt Lake  
Roosevelt Heights



























Assessment Roll and Tax List of Real Property in the Town of Crooked Lake

\*Indicate Type of Property: R-Residential, C-Commercial, I-Industrial, U-Utility, F-Farm

Table with columns: IN WHOSE NAME ASSESSED, TO WHOM TRANSFERRED, DESCRIPTION OF PROPERTY, TRUE AND FULL VALUATIONS, ASSESSED VALUATIONS, FINAL EQUALIZED VALUE.

Cass County, Minnesota, for Taxes for the Year 1955.

Table with columns: VALUATIONS BY SCHOOL DISTRICTS AS EQUALIZED BY DEPARTMENT OF TAXATION, TAXES, PAID, WHEN PAID, March Settlement, June Settlement, November Settlement, Delinquent on First Monday in January 1957, Total Delinquent Tax and Penalty, REMARKS.

Vertical text on the left edge of the page, including 'The Narrows', 'Roosevelt Soo', 'Auditor's Plat of Lake Washburn Outlots', 'Roosevelt Trails', 'Iovana Heights', 'Roosevelt Lake Heights'.

Vertical text on the right edge of the page, including 'Washburn Plots', 'Strat Beach on Roosevelt Lake', 'Plat of Part of Lot 7', 'Roosevelt's Washburn Lake Addition', 'Plat of Part of Roosevelt's Washburn Lake Addition'.



























Assessment Roll and Tax List of Real Property in the Town of Crossed Lake,  
\*Indicate Type of Property: R-Residential, C-Commercial, I-Industrial, U-Utility, F-Farm

Form 5C (55) MILLER-BAYNE COMPANY, MINNEAPOLIS

IN WHOSE NAME ASSESSED	TO WHOM TRANSFERRED	DESCRIPTION OF PROPERTY				TRUE AND FULL VALUATIONS										FINAL EQUALIZED VALUE	
		SUBDIVISION	Sec. of Lot	Town or Block	Number of Acres of Land	LAND Exclusive of Structures and Improvements	BUILDINGS and Other Structures	MACHINERY Permanently Attached to Real Estate	TOTAL True and Full Value	RURAL		ALL OTHER		MACHINERY Permanently Attached to Real Estate 33 1/8%	TOTAL ASSESSED VALUE		Total Assessed Value as Equalized by the Board of Review
										Acres	100ths	Homestead Up to \$4,000 20%	Over \$4,000 and Non-Homestead 33 1/3%				
	Sunset Beach on roosevelt Lake					Dollars	Dollars	Dollars	Dollars	Dollars	Dollars	Dollars	Dollars	Dollars	Dollars	Dollars	
Roy H. Erickson		Tract 15			6-1 7/8												
Kenneth R. & Theodore B. Fossen		Tract 16															
William C. & Cecelia D. Vehe		Tract 17															
State of Minnesota		Tract 18															

Cass County, Minnesota, for Taxes for the Year 1955.

SOLD FOR TAXES	VALUATIONS BY SCHOOL DISTRICTS AS EQUALIZED BY DEPARTMENT OF TAXATION						Tax including State Homestead	State Tax on Non-Homestead	SPECIAL TAXES	TOTAL TAXES	PAID	WHEN PAID	Number of Receipt	March Settlement 1956	June Settlement 1956	Penalty 1956	November Settlement 1956	Penalty 1956	Collections to First Monday in January 1957	Penalty 1957	Delinquent on First Monday in January 1957	Total Delinquent Tax and Penalty	REMARKS
	District No.	District No.	District No.	District No.	District No.	District No.																	
	Rate	Rate	Rate	Rate	Rate	Rate																	
1							848	24	872	1	PAID IN FULL	MAY 31 1956	8043		872								
2							226	06	232	2	PAID IN FULL	MAY 31 1956	9036		232								
3							1742	50	1842	3	PAID IN FULL	FEB 10 1956	1846		1842								
4										4													
5										5													
6										6													
7										7													
8										8													
9										9													
10										10													
11										11													
12										12													
13										13													
14										14													
15										15													
16										16													
17										17													
18										18													
19										19													
20										20													
										152			2866	40	2946			1842	1104				

Auditor's Plat of The Narrows Lake Washburn Outlots Lake Washburn Outlots Sunset Beach on Roosevelt Lake

Shoey Hollow Karali's Wood Lake Plat of Part of Roosevelt Shores Lines A Planity on Lake Washburn







Assessment Roll and Tax List of Real Property in the Town of Crooked Lake, Cass County, Minnesota, for Taxes for the Year 1955.

Form 3C (55) HILL-BATE COMPANY, MINNEAPOLIS

Table with columns: IN WHOSE NAME ASSESSED, TO WHOM TRANSFERRED, SUBDIVISION, TRUE AND FULL VALUATIONS (LAND, BUILDINGS, MACHINERY, TOTAL), ASSESSED VALUATIONS (RURAL, ALL OTHER, MACHINERY, TOTAL), Total Assessed Value, FINAL EQUALIZED VALUE.

Cass County, Minnesota, for Taxes for the Year 1955.

Table with columns: SOLD FOR TAXES, VALUATIONS BY SCHOOL DISTRICTS AS EQUALIZED BY DEPARTMENT OF TAXATION, Tax including State Homestead, State Tax on Non-Homestead, SPECIAL TAXES, TOTAL TAXES, PAID, WHEN PAID, Number of Receipt, March Settlement 1956, June Settlement 1956, Penalty, November Settlement 1956, Penalty, Collections to First Monday in January 1957, Delinquent on First Monday in January 1957, Total Delinquent Tax and Penalty, REMARKS.

Vertical text on the left edge of the page listing various locations and property descriptions.

Vertical text on the right edge of the page listing various locations and property descriptions.



Assessment Roll and Tax List of Real Property in the Town of Crooked Lake, Minnesota

Form 5C (55) MILLER-BAYNE COMPANY, MINNEAPOLIS

\*Indicate Type of Property: R-Residential, C-Commercial, I-Industrial, U-Utility, F-Farm

Table with columns: IN WHOSE NAME ASSESSED, TO WHOM TRANSFERRED, SUBDIVISION, DESCRIPTION OF PROPERTY, TRUE AND FULL VALUATIONS, ASSESSED VALUATIONS, FINAL EQUALIZED VALUE.

Cass County, Minnesota, for Taxes for the Year 1955.

Table with columns: SOLD FOR TAXES, VALUATIONS BY SCHOOL DISTRICTS AS EQUALIZED BY DEPARTMENT OF TAXATION, SPECIAL TAXES, TOTAL TAXES, PAID, WHEN PAID, Number of Receipt, March Settlement 1956, June Settlement 1956, November Settlement 1956, Collections to First Monday in January 1957, Delinquent on First Monday in January 1957, Total Delinquent Tax and Penalty, REMARKS.

Vertical text on the left edge of the page listing various property owners and locations like 'The Narrows', 'Washburn Pines', 'Auditor's Plat of Lake Washburn Outlots', etc.

Vertical text on the right edge of the page listing various property owners and locations like 'Smoky Hollow', 'Inisher's Bay', 'Kavali's Wood Lake', etc.































Assessment Roll and Tax List of Real Property in the Town of Crooked Lake

\*Indicate Type of Property: R-Residential, C-Commercial, I-Industrial, U-Utility, F-Farm

Form 5C (55) WALKER-BAY COMPANY, MINNEAPOLIS

Table with columns: IN WHOSE NAME ASSESSED, TO WHOM TRANSFERRED, SUBDIVISION, TRUE AND FULL VALUATIONS (LAND, BUILDINGS, MACHINERY, TOTAL), ASSESSED VALUATIONS (RURAL, ALL OTHER, MACHINERY, TOTAL), Total Assessed Value, FINAL EQUALIZED VALUE.

Cass County, Minnesota, for Taxes for the Year 1955.

Table with columns: SOLD FOR TAXES, VALUATIONS BY SCHOOL DISTRICTS AS EQUALIZED BY DEPARTMENT OF TAXATION, Tax including State Homestead, State Tax on Non-Homestead, SPECIAL TAXES, TOTAL TAXES, PAID, WHEN PAID, Number of Receipt, March Settlement 1956, June Settlement 1956, November Settlement 1956, Penalty, Collections to First Monday in January 1957, Delinquent on First Monday in January 1957, Total Delinquent Tax and Penalty, REMARKS.

Vertical text on the left edge of the page, including 'Lusher's Bay', 'Kavli's Wood Lake Shores', and other property identifiers.

Vertical text on the right edge of the page, including 'Sandy Hollow Addition', 'Robert's Lake', and other property identifiers.











Assessment Roll and Tax List of Real Property in the Town of Greenwood Lake, Minnesota

Form 50 (55) MILLER-BAY COMPANY, MINNEAPOLIS

\*Indicate Type of Property: R-Residential, C-Commercial, I-Industrial, U-Utility, F-Farm

Table with columns: IN WHOSE NAME ASSESSED, TO WHOM TRANSFERRED, DESCRIPTION OF PROPERTY, TRUE AND FULL VALUATIONS (RURAL, ALL OTHER, MACHINERY), and FINAL EQUALIZED VALUE.

Handwritten entries: A. G. & Mary & Kavli, Carl Arthur Olson & Oliver John Olson

Cass County, Minnesota, for Taxes for the Year 1955.

Table with columns: SOLD FOR TAXES, VALUATIONS BY SCHOOL DISTRICTS AS EQUALIZED BY DEPARTMENT OF TAXATION, Tax including State Homestead, SPECIAL TAXES, TOTAL TAXES, PAID, WHEN PAID, Number of Receipt, March Settlement 1956, June Settlement 1956, November Settlement 1956, Collections to First Monday in January 1957, Delinquent on First Monday in January 1957, Total Delinquent Tax and Penalty, REMARKS.

Handwritten totals: 130, 2452, 10, 2522, 2522







Watch lines for values new figures added

Assessment Roll and Tax List of Real Property in the Town of Crooked Lake

\*Indicate Type of Property: R-Residential, C-Commercial, I-Industrial, U-Utility, F-Farm

Table with columns: IN WHOSE NAME ASSESSED, TO WHOM TRANSFERRED, SUBDIVISION, TRUE AND FULL VALUATIONS, ASSESSED VALUATIONS, FINAL EQUALIZED VALUE. Includes handwritten entries for George & Bertha Linn, Edwin S. Carlson & Emmett S. Leach, etc.

Cass County, Minnesota, for Taxes for the Year 1955.

Table with columns: VALUATIONS BY SCHOOL DISTRICTS AS EQUALIZED BY DEPARTMENT OF TAXATION, TAXES, PAID, WHEN PAID, Number of Receipt, March Settlement 1956, June Settlement 1956, November Settlement 1956, Collections to First Monday in January 1957, Delinquent on First Monday in January 1957, Total Delinquent Tax and Penalty, REMARKS. Includes handwritten entries for 1 PAID IN FULL MAY 31 1956, etc.

Vertical text on the left edge: Auditor's Plat of..., Kings Lake..., Rosevelt Shores..., O'Brien's Plat...

Vertical text on the right edge: Smally's Addition, Part of O'Brien's Plat...







Assessment Roll and Tax List of Real Property in the Town of Crooked Lake,  
\*Indicate Type of Property: R-Residential, C-Commercial, I-Industrial, U-Utility, F-Farm

Form 5C (55) WILHELM-BAY COMPANY, MINNEAPOLIS

IN WHOSE NAME ASSESSED	TO WHOM TRANSFERRED	DESCRIPTION OF PROPERTY				TRUE AND FULL VALUATIONS										FINAL EQUALIZED VALUE	
		Sec. or Lot	Town or Block	Rug	Number of Acres of Land	LAND Exclusive of Structures and Improvements	BUILDINGS and Other Structures	MACHINERY Permanently Attached to Real Estate	TOTAL True and Full Value	RURAL		ALL OTHER		MACHINERY Permanently Attached to Real Estate	TOTAL ASSESSED VALUE		Total Assessed Value as Equalized by the Board of Review
										Acres	100ths	Homestead Up to \$4,000 20%	Over \$4,000 and Non-Homestead 33 1/3%				
Melvin L. & Margaret M. O'Brien		1															
James M. Olds		2															
James M. & Viola M. Olds		3															
Eugene L. & Vida R. O'Brien		4															
Melvin L. & Margaret M. O'Brien		5															
Leontine U. & Irene N. Wilson		6															
		7															
		8															
		9															
		10															
		11															
		12															
		13															
		14															
		15															
		16															
		17															
		18															
		19															
		20															

SUBDIVISION: Part of Outlot A, L. O'Brien's Plat on Roosevelt & Lawrence Streets

Indicate Homestead Yes or No: 6-1 Yes, 2 Yes, 3 No, 4 Yes, 5 Yes, 6 No

100 added by Town Board for 1955 + M.H.

45

Cass County, Minnesota, for Taxes for the Year 1955.

SOLD FOR TAXES	VALUATIONS BY SCHOOL DISTRICTS AS EQUALIZED BY DEPARTMENT OF TAXATION						Tax including State Homestead	State Tax on Non-Homestead	SPECIAL TAXES	TOTAL TAXES	PAID	WHEN PAID	Number of Receipt	March Settlement 1956	June Settlement 1956	Penalty	November Settlement 1956	Penalty	Collections to First Monday in January 1957	Penalty	Delinquent on First Monday in January 1957	Total Delinquent Tax and Penalty	REMARKS
	District No.	District No.	District No.	District No.	District No.	District No.																	
	Rate	Rate	Rate	Rate	Rate	Rate																	
	H 6						114		114	1	PAID IN FULL	MAY 18 1956	6671		114								
	H 6						114		114	2	PAID IN FULL	APR 24 1956	5552		114								
	10						188	06	194	3	2nd Half PAID	OCT 31 1956	15751		97		97						
	H 69						1302		1302	4	PAID IN FULL	AUG 17 1956	13020				1302	33					
SOLD FOR TAXES	H 7						132		132	5	PAID IN FULL	MAY 18 1956	6671		132								
	45						848	24	872	6	PAID IN FULL	MAY 31 1956	8095		872								
										7													
										8													
										9													
										10													
										11													
										12													
										13													
										14													
										15													
										16													
										17													
										18													
										19													
										20													
	H 88						2698	30	2788														
	55																						
	143																						

Auditor's Plat of... Lusher's Bay... Plat of Part of... Roosevelt Lake... O'Brien's Plat... Plat of Outlot "A" of... O'Brien's Plat on Roosevelt & Lawrence Streets

SMOKY HOLLOW ADDITION



























