

ASSESSMENT & TAX LIST

Crooked Lake

1953















Assessment of T

COLLECTIONS OF TAXES OF 1953

Town

OF Crooked Lake

CASS COUNTY, MINNESOTA

FUNDS	MARCH SETTLEMENT 1953	JUNE SETTLEMENT 1953	NOV. SETTLEMENT 1953	Amount Collected from Nov. 1952 to First Monday in Jan. 1953	REDUCTIONS	Total Reductions and collected	BALANCE UNCOLLECTED	ADDITIONS	Total Uncollected to First Monday in January, 1953
State—Non-Homestead, State—Homestead,	2428 2969	13360 18914	3388 5829	120 393					
County Revenue, County Road and Bridge, County Welfare, County Bond and Interest, <i>A. &amp; O. Sinking</i>	15912 8940 28406 6011 1125	101377 56957 18073 38294 7164	31242 17552 55772 11801 2208	2107 1184 3762 796 149					
Town Revenue, Town Road and Bridge, Town Drag, Town State Loan, <i>Fire Telephone</i>	2305 7028 562 1406	14687 44778 3582 8956	4526 13799 1104 2760	305 931 74 196					
School Local 1 Mill, School Special, School State Loan, Deficiency Tuition Transportation C.O.	562 23087 23616 1124 3205	3582 119082 150453 7164 20419	1104 37399 46366 2208 6292	75 3303 3127 149 425					
	128686	789742	243358	17086					

NAME OF OWNER

1

2

3

4

5

6

7

8

	SCHOOL DISTRICT NO.	LOCAL 1 MILL	SPECIAL	STATE LOAN	Deficiency	Transport.	C.O.	TOTALS
MARCH SETTLEMENT	A C / NAC /	201 361	5028 18059		8488 15768	402 722	1146 2059	15225 36369
	Totals	562	23087		23616	1124	3205	51594
JUNE SETTLEMENT	A C / NAC /	2401 1181	60028 59054		108889 49604	4802 2362	13687 6732	181767 118933
	Totals	3582	119082		150453	7164	20419	300700
NOVEMBER SETTLEMENT	A C / NAC /	712 392	17800 19599		29903 16463	1424 784	4058 2234	53897 37472
	Totals	1104	37399		46366	2208	6292	93369
NOVEMBER to JANUARY	A C / NAC /	17 58	419 2884		704 2423	34 115	96 329	1270 5809
	Totals	75	3303		3127	149	425	7079
ADDITIONS	School District No.							
	Totals							
REDUCTIONS	School District No.							
	Totals							

The Barrows  
 Auditor's Plat of Lake  
 Washburn Outlets  
 Roosevelt Trails  
 Ingalls Bros.  
 Rosevelt Trails  
 Tomma Heights  
 part of  
 Washburn Outlets





































































































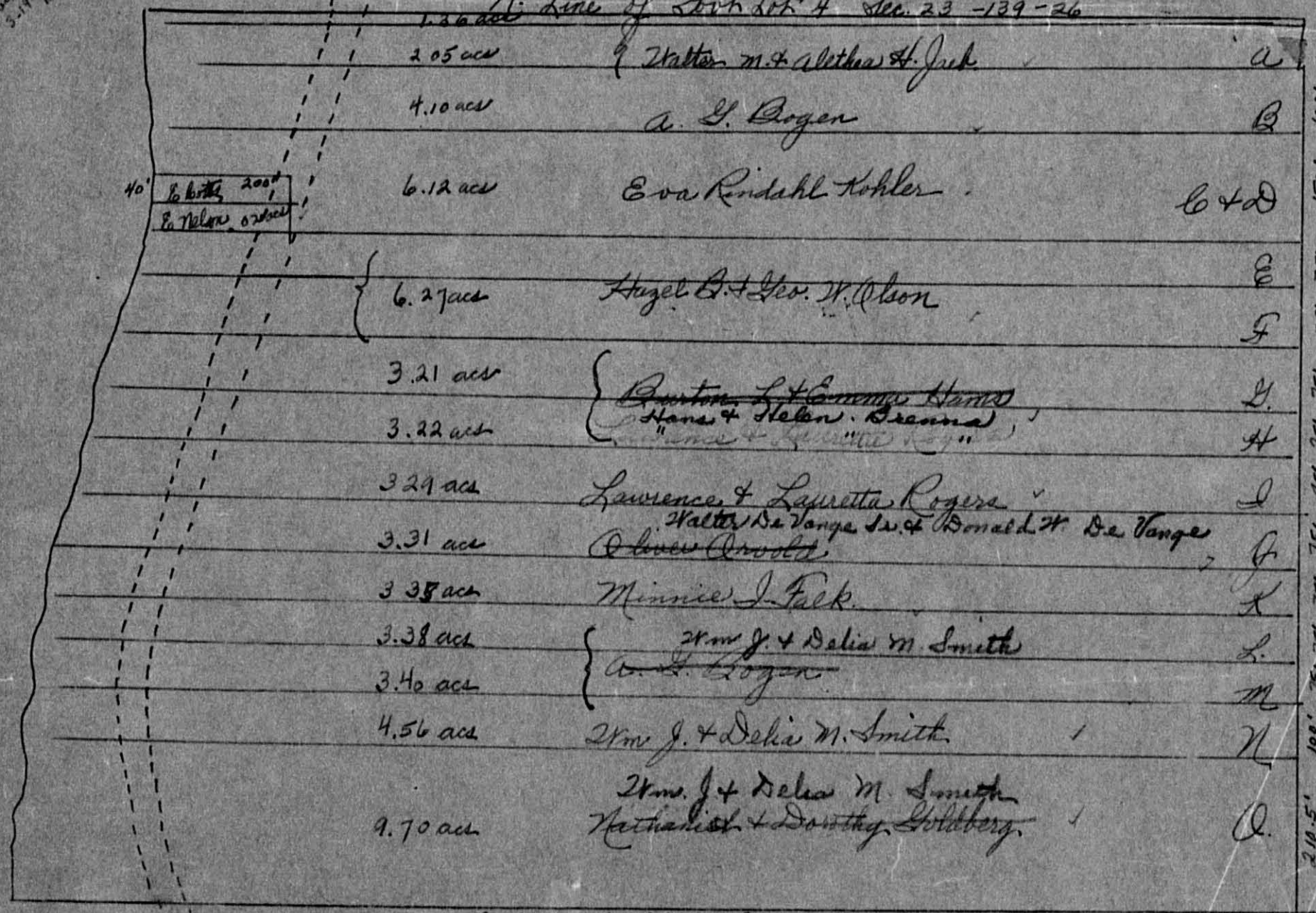






checked  
5-19-53  
RDB

N. Line of Sect Lot 4 Sec. 23 -139-26



S. Line of Sect Lot 4

100' 100' 100' 75' 75' 75' 75' 75' 75' 100' 210.5'

















































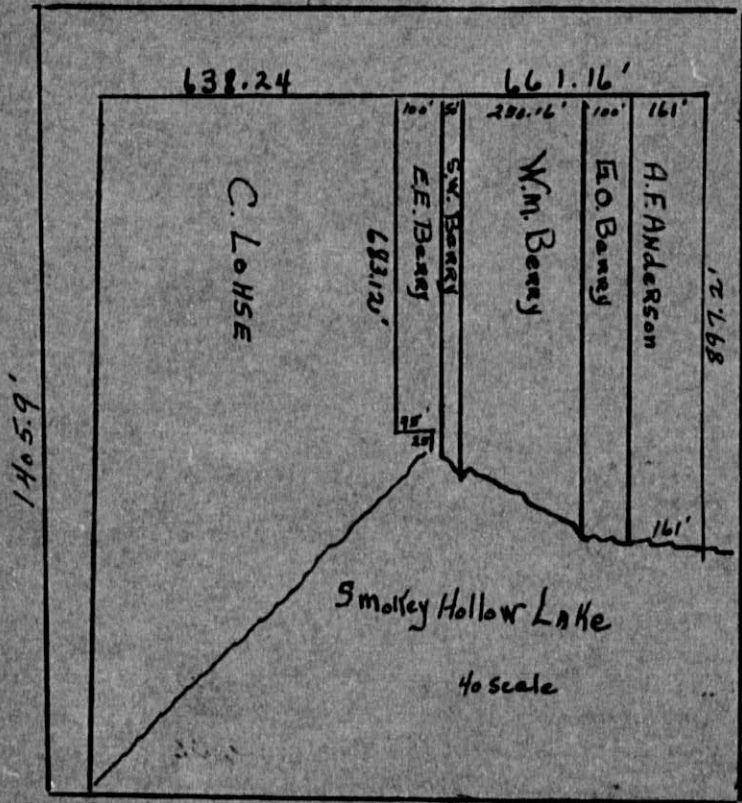






Made 9/25/63

Lot 3  
35-139-26





Assessment Roll and Tax List of Real Property in the Town of Crooked Lake

Form 301 (53) MINN-DIV-10-1952, MINNAPOLIS

IN WHOSE NAME ASSESSED	TO WHOM TRANSFERRED	DESCRIPTION OF PROPERTY				TRUE AND FULL VALUATIONS										FINAL EQUALIZED VALUE							
		SUBDIVISION	Sec. or Lot	Town or Block	Rng.	Number of Acres of Land	No. School District	Indicate Homestead Yes or No	Indicate Agricultural Yes or No	LAND Exclusive of Structures and Improvements		BUILDINGS and Other Structures	MACHINERY Permanently Attached to Real Estate	TOTAL True and Full Value	RURAL		ALL OTHER		MACHINERY Permanently Attached to Real Estate	TOTAL ASSESSED VALUE	Total Assessed Value as Equalized by the Board of Review		
										Acres	100ths	Dollars	Dollars	Dollars	Dollars		Dollars	Dollars	Dollars	Dollars	Dollars	Dollars	Dollars
		NE 1/4 of NE 1/4																					
		NW 1/4 of NE 1/4																					
State of Minnesota		SW 1/4 of NE 1/4																					
State of Minnesota		SE 1/4 of NE 1/4																					
		NE 1/4 of NW 1/4																					
		NW 1/4 of NW 1/4																					
		SW 1/4 of NW 1/4																					
		SE 1/4 of NW 1/4																					
		NE 1/4 of SW 1/4																					
		NW 1/4 of SW 1/4																					
		SW 1/4 of SW 1/4																					
		SE 1/4 of SW 1/4																					
State of Minnesota		NE 1/4 of SE 1/4																					
State of Minnesota		NW 1/4 of SE 1/4																					
State of Minnesota		SW 1/4 of SE 1/4																					
State of Minnesota		SE 1/4 of SE 1/4																					

Cass County, Minnesota, for Taxes for the Year 1953.

SOLD FOR TAXES	VALUATIONS BY SCHOOL DISTRICTS AS EQUALIZED BY DEPARTMENT OF TAXATION						Tax including State Homestead	State Tax on Non-Homestead	SPECIAL TAXES	TOTAL TAXES	PAID	WHEN PAID	Number of Receipt	March Settlement 1954	June Settlement 1954	Penalty	November Settlement 1954	Penalty	Collections to First Monday in January 1955	Penalty	Delinquent on First Monday in January 1955	Total Delinquent Tax and Penalty	REMARKS
	District No.	District No.	District No.	District No.	District No.	District No.																	
	Rate	Rate	Rate	Rate	Rate	Rate																	
1																							
2																							
3																							
4																							
5																							
6																							
7																							
8																							
9																							
10																							
11																							
12																							
13																							
14																							
15																							
16																							
17																							
18																							
19																							
20																							

Hel... Auditor's Plat of Lake...  
 Mashburn Outlots  
 Roosevelt Trails  
 Ingdala Bros.  
 Iowaa Heights  
 F's Plat of Lake...  
 Burn Outlots























Assessment Roll and Tax List of Real Property in the Town of Crooked Lake

Cass County, Minnesota, for Taxes for the Year 1953.

The Narrows Auditor's Plat of Lake Washburn Outlots Tingleale Bros. Roosevelt Trails

Table with columns: IN WHOSE NAME ASSESSED, TO WHOM TRANSFERRED, SUBDIVISION, TRUE AND FULL VALUATIONS, ASSESSED VALUATIONS, VALUATIONS BY SCHOOL DISTRICTS AS EQUALIZED BY DEPARTMENT OF TAXATION, TAXES, PAID, WHEN PAID, Number of Receipt, March Settlement 1954, June Settlement 1954, November Settlement 1954, Collections to First Monday in January 1955, Delinquent on First Monday in January 1955, Total Delinquent Tax and Penalty, REMARKS.

Tingleale Bros. Lake Washburn Outlots Roosevelt + Soc Tingleale Bros. Lake Washburn Outlots Roosevelt + Soc Tingleale Bros. Lake Washburn Outlots Roosevelt + Soc















Assessment Roll and Tax List of Real Property in the Town of Brookside Lake

Cass County, Minnesota, for Taxes for the Year 1953.

Form 50 (53) MINN. STAT. SEC. 260.01

Table with columns: IN WHOSE NAME ASSESSED, TO WHOM TRANSFERRED, SUBDIVISION, TRUE AND FULL VALUATIONS (LAND, BUILDINGS, MACHINERY, TOTAL), ASSESSED VALUATIONS (RURAL, ALL OTHER, MACHINERY, TOTAL ASSESSED), FINAL EQUALIZED VALUE, VALUATIONS BY SCHOOL DISTRICTS AS EQUALIZED BY DEPARTMENT OF TAXATION, TAXES (SPECIAL, TOTAL, PAID, WHEN PAID), and REMARKS.

Vertical text on the left margin: The Narrows, Auditor's Plat of Lake Washburn Outlets, Wingdale Bros. Roosevelt Trails

Vertical text on the right margin: Lake Heights, Roosevelt + Soc, Wingdale Bros. Lake Roosevelt Shores, Ina Helms, Iowa Heights, Plat of Lake Washburn Outlets











































Assessment Roll and Tax List of Real Property in the Town of Brookside Lake

Form 5C (53) 1-1-53

IN WHOSE NAME ASSESSED	TO WHOM TRANSFERRED	DESCRIPTION OF PROPERTY			No. School District	Indicate Homestead Yes or No	Indicate Agricultural Yes or No	TRUE AND FULL VALUATIONS					ASSESSED VALUATIONS					FINAL EQUALIZED VALUE			
		SUBDIVISION	Sec. or Lot	Town or Block				Rng.	Number of Acres of Land	LAND Exclusive of Structures and Improvements	BUILDINGS and Other Structures	MACHINERY Permanently Attached to Real Estate	TOTAL True and Full Value	RURAL		ALL OTHER			MACHINERY Permanently Attached to Real Estate	TOTAL ASSESSED VALUE	Total Assessed Value as Equalized by the Board of Review
														Acres	100ths	Homestead Up to \$4,000 20%	Over \$4,000 and Non-Homestead 33 1/3%				
	<i>Dingdale Bros. Roosevelt Trails</i>																				
<i>Reinhart W. + Raymond Blashorn</i>																					
<i>Harry L. + Hannah M. Blackburn</i>																					
<i>George R. + Esther L. Kasein</i>																					
<i>Chas. A. Saefke</i>	<i>Lawrence L. Saefke</i>																				
<i>Herbert W. + Minna Schaefer</i>																					
<i>Jennie L. Arneson</i>																					
<i>Theodore R. Hansen</i>	<i>Barney + Bessie Data</i>																				
"	"																				
"	"																				
"	"																				
"	"																				
"	"																				
"	"																				
"	"																				
State of Minnesota	<i>Outlot A</i>																				

*1900 Homestead released by town board.*

*H. 6 N.H. 30*

Cass County, Minnesota, for Taxes for the Year 1953.

SOLD FOR TAXES	VALUATIONS BY SCHOOL DISTRICTS AS EQUALIZED BY DEPARTMENT OF TAXATION						Tax Including State Homestead	State Tax on Non-Homestead	SPECIAL TAXES	TOTAL TAXES	PAID	WHEN PAID	Number of Receipt	March Settlement 1954	June Settlement 1954	November Settlement 1954	Penalty	Collections to First Monday in January 1955	Penalty	Delinquent on First Monday in January 1955	Total Delinquent Tax and Penalty	REMARKS
	District No.	District No.	District No.	District No.	District No.	District No.																
	Rate	Rate	Rate	Rate	Rate	Rate																
1																						
2																						
3																						
4																						
5																						
6																						
7																						
8																						
9																						
10																						
11																						
12																						
13																						
14																						
15																						
16																						
17																						
18																						
19																						
20																						

# 49  
212  
261

# 275 = 324  
81 = 293  
356 = 617

5440  
8314  
13754

136

13890

8968 4588 384

The Map Auditor's Plat of Lake Washburn Outlots

Dingdale Bros. Roosevelt Trails

The Map Auditor's Plat of Lake Washburn Outlots  
Dingdale Bros. Roosevelt Trails  
Dingdale Bros. Lake Roosevelt Shores  
Dingdale Bros. Lake Roosevelt Shores  
Dingdale Bros. Lake Roosevelt Shores























































































































































