

ASSESSMENT & TAX LIST - 1959  
Crooked Lake







COLLECTIONS OF TAXES OF 1957

*Town* OF *Brook Lake*, CASS COUNTY, MINNESOTA

FUNDS	MARCH SETTLEMENT 19.66.	JUNE SETTLEMENT 19.62.	NOV. SETTLEMENT 19.62.	Amount Collected from Nov. 19.62. to First Monday in Jan. 19.67.	REDUCTIONS	Total Reductions and Collected	BALANCE UNCOLLECTED	ADDITIONS	Total Uncollected to First Monday in January, 19.67.
Slate-Non-Homestead, State-Homestead,	33 88 46 41	236 73 372 63	59 91 97 40						
County Revenue, County Road and Bridge, County Welfare, County Bond and Interest, <i>Transp.</i> <i>P. + B. - A. P.</i> <i>PERA</i> <i>Co. Nurse</i> Town Revenue, Town Road and Bridge, Town Prog. <i>Fire</i> Town State Loan, <i>P. + B. Bldg.</i> <i>Agric. Adm.</i>	316 84 133 20 550 11 9 94 44 40 51 42 17 76 31 08 140 30 18 64 17 76 4 44	1651 94 644 78 2868 21 51 86 281 49 268 06 92 60 162 05 731 52 97 22 92 60 23 15	443 66 186 52 770 32 13 92 62 17 72 00 24 87 43 52 196 47 26 11 24 87 6 22	425 178 737 13 60 69 24 42 188 25 24 06					
School Local 1 Mill, School Special, School State Loan, Deficiency Tuition Transportation <i>C. O.</i> <i>PERA</i> <i>B. + Int.</i>	444 00 307 87 103 90 54 77 32 86	2306 29 1605 17 541 69 282 44 171 30	615 32 431 10 145 48 75 85 46 01	595 412 139 72 45					
	2358 98	12481 49	3343 72	3150					

	LOCAL 1 MILL	SPECIAL	STATE LOAN	<i>Def.</i>	<i>C. O.</i>	<i>PERA</i>	<i>B. + Int.</i>	TOTALS
School District No. <i>118-7A</i>		444 00		307 87	103 90	54 17	32 86	942 80
MARCH SETTLEMENT								
Totals		444 00		307 87	103 90	54 17	32 86	942 80
School District No. <i>118-A</i> <i>118-7A</i>		866 2297 63		1200 1593 17	405 537 64	212 280 32	128 1700 2	2811 4878 78
JUNE SETTLEMENT								
Totals		2306 29		1605 17	541 69	282 44	171 30	4906 89
School District No. <i>118-A</i> <i>118-7A</i>		643 608 89		890 422 20	300 142 48	157 74 28	95 45 06	2085 1292 91
NOVEMBER SETTLEMENT								
Totals		615 32		431 10	145 48	75 85	46 01	1313 76
School District No. <i>118-7A</i>		595		412	139	72	45	1263
NOVEMBER to JANUARY								
Totals		595		412	139	72	45	1263
School District No.								
ADDITIONS								
Totals								
School District No.								
REDUCTIONS								
Totals								

The Harrows Auditor's Part of Tax  
Mapburn Outlets  
Real Estate  
P. + B. + Int. Roosevelt  
Roosevelt Lake Bldg.











Assessment Roll and Tax List of Real Property in the Town of Crooked Lake

Indicate Type of Property: R-Residential, C-Commercial, I-Industrial, U-Utility, F-Farm, L-Lakeshore, T-Timber, M-Mineral

Cass County, Minnesota, for Taxes for the Year 1959.

Table with columns: IN WHOSE NAME ASSESSED, TO WHOM TRANSFERRED, DESCRIPTION OF PROPERTY, TRUE AND FULL VALUATIONS, ASSESSED VALUATIONS, VALUATIONS BY SCHOOL DISTRICTS AS EQUALIZED BY DEPARTMENT OF TAXATION, SOLD FOR TAXES, PAID, WHEN PAID, SPECIAL TAXES, TOTAL TAXES, MARCH SETTLEMENT 1960, JUNE SETTLEMENT 1960, PENALTY, NOVEMBER SETTLEMENT 1960, COLLECTIONS TO FIRST MONDAY IN JANUARY 1961, DELINQUENT ON FIRST MONDAY IN JANUARY 1961, TOTAL DELINQUENT TAX AND PENALTY, REMARKS.

Real Estate

The Narrows

Auditor's Print of Lake

Paul R. Dyer

Roosevelt Lake Hellders

Roosevelt Lake Hellders

Assessment Roll and Tax List of Real Property in the Town of Crooked Lake

Cass County, Minnesota, for Taxes for the Year 1959.

Indicate Type of Property: R-Residential, C-Commercial, I-Industrial, U-Utility, F-Farm, L-Lakeshore, T-Timber, M-Mineral

Real Estate

Table with columns: IN WHOSE NAME ASSESSED, TO WHOM TRANSFERRED, DESCRIPTION OF PROPERTY, TRUE AND FULL VALUATIONS, ASSESSED VALUATIONS, VALUATIONS BY SCHOOL DISTRICTS AS EQUALIZED BY DEPARTMENT OF TAXATION, SOLD FOR TAXES, SPECIAL TAXES, TOTAL TAXES, PAID, WHEN PAID, Number of Receipt, March Settlement 1960, June Settlement 1960, November Settlement 1960, Collections to First Monday in January 1961, Delinquent on First Monday in January 1961, Total Delinquent Tax and Penalty, REMARKS.

Vertical text on the right edge: The Harrows, Indicator's Part of Lake, Paul G. Bjos Roosevelt was Helphet, Roosevelt Lake Helphet





Assessment Roll and Tax List of Real Property in the Town of Crooked Lake

Cass County, Minnesota, for Taxes for the Year 1959.

\* Indicate Type of Property: R-Residential, C-Commercial, I-Industrial, U-Utility, F-Farm, L-Lakeshore, T-Timber, M-Mineral

Table with columns: IN WHOSE NAME ASSESSED, TO WHOM TRANSFERRED, DESCRIPTION OF PROPERTY, TRUE AND FULL VALUATIONS, ASSESSED VALUATIONS, VALUATIONS BY SCHOOL DISTRICTS AS EQUALIZED BY DEPARTMENT OF TAXATION, TAXES, PAID, WHEN PAID, etc.

Auditor's Part of Tax Roll, Biggs, Rogers, Hoover and Bell, Rogers, Let Lake, Helge



Assessment Roll and Tax List of Real Property in the Town of Crooked Lake

Cass County, Minnesota, for Taxes for the Year 1959.

\* Indicate Type of Property: R-Residential, C-Commercial, I-Industrial, U-Utility, F-Farm, L-Lakeshore, T-Timber, M-Mineral

Real Estate

Table with columns: IN WHOSE NAME ASSESSED, TO WHOM TRANSFERRED, DESCRIPTION OF PROPERTY, TRUE AND FULL VALUATIONS, ASSESSED VALUATIONS, VALUATIONS BY SCHOOL DISTRICTS AS EQUALIZED BY DEPARTMENT OF TAXATION, SOLD FOR TAXES, SPECIAL TAXES, TOTAL TAXES, PAID, WHEN PAID, Number of Receipt, March Settlement 1960, June Settlement 1960, Penalty, November Settlement 1960, Penalty, Collections to First Monday in January 1961, Penalty, Delinquent on First Monday in January 1961, Total Delinquent Tax and Penalty, REMARKS.

The Harrows

Auditor's Plat of Lake

Paul E. G. Rosevele and Helmer

Rosevele & Lake

Rosevele & Lake





Assessment Roll and Tax List of Real Property in the Town of Carver Lake

Cass County, Minnesota, for Taxes for the Year 1959.

Indicate Type of Property: R-Residential, C-Commercial, I-Industrial, U-Utility, F-Farm, L-Lakeshore, T-Timber, M-Mineral

Table with columns for (IN WHOSE NAME ASSESSED), TO WHOM TRANSFERRED, DESCRIPTION OF PROPERTY, TRU AND FULL VALUATIONS, ASSESSED VALUATIONS, VALUATIONS BY SCHOOL DISTRICTS AS EQUALIZED BY DEPARTMENT OF TAXATION, SOLD FOR TAXES, PAID, WHEN PAID, Number of Receipt, March Settlement 1960, June Settlement 1960, November Settlement 1960, Penalty, Collections to First Monday in January 1961, Delinquent on First Monday in January 1961, Total Delinquent Tax and Penalty, REMARKS.

Real Estate

The Warrons Auditor's Plat of Lake Carver Lake, Cass County, Minnesota, 1959

Assessment Roll and Tax List of Real Property in the Town of Coon Lake

Cass County, Minnesota, for Taxes for the Year 1959.

Indicate Type of Property: R-Residential, C-Commercial, I-Industrial, U-Utility, F-Farm, L-Lakeshore, T-Timber, M-Mineral

Main table with columns: IN WHOSE NAME ASSESSED, TO WHOM TRANSFERRED, DESCRIPTION OF PROPERTY, TRUER AND FULL VALUATIONS, ASSESSED VALUATIONS, VALUATIONS BY SCHOOL DISTRICTS AS EQUALIZED BY DEPARTMENT OF TAXATION, TAXES, PAID, WHEN PAID, etc.

Real Estate

The Heretofore Auditor's List of Lake

Auditor's List of Lake

Paula Berg Roosevelt and Helmer Berg

Roosevelt Lake

Assessment Roll and Tax List of Real Property in the Town of Crooked Lake

Form 30 - MILLER-DAVIS CO., MINNEAPOLIS

Indicate Type of Property: R-Residential, C-Commercial, I-Industrial, U-Utility, F-Farm, L-Lakeshore, T-Timber, M-Mineral

Cass County, Minnesota, for Taxes for the Year 1959.

Table with columns: IN WHOSE NAME ASSESSED, TO WHOM TRANSFERRED, DESCRIPTION OF PROPERTY, TRUE AND FULL VALUATIONS, ASSESSED VALUATIONS, VALUATIONS BY SCHOOL DISTRICTS AS EQUALIZED BY DEPARTMENT OF TAXATION, TAXES, PAID, WHEN PAID, SPECIAL TAXES, TOTAL TAXES, PAID, WHEN PAID, Number of Receipt, March Settlement 1960, June Settlement 1960, Penalty, November Settlement 1960, Penalty, Collections to First Monday in January 1961, Penalty, Delinquent on First Monday in January 1961, Total Delinquent Tax and Penalty, REMARKS.

Vertical text on the right edge of the page, including 'The Barrows', 'Auditor's Part of List', 'John B. Rogers', 'Roosevelt', 'Held at 900'.



Assessment Roll and Tax List of Real Property in the Town of Crooked Lake

Cass County, Minnesota, for Taxes for the Year 1959.

Form 80 - MILLER-DAVIS CO., MINNEAPOLIS. \* Indicate Type of Property: R-Residential, C-Commercial, I-Industrial, U-Utility, F-Farm, L-Lakeshore, T-Timber, M-Mineral

Table with columns: IN WHOSE NAME ASSESSED, TO WHOM TRANSFERRED, DESCRIPTION OF PROPERTY, TRUE AND FULL VALUATIONS, ASSESSED VALUATIONS, VALUATIONS BY SCHOOL DISTRICTS AS EQUALIZED BY DEPARTMENT OF TAXATION, TAXES, PAID, WHEN PAID, etc.

Vertical text on the right edge: Auditor's Print of Lake, Sale Brgs Roosevelt and Helge, Roosevelt Lake Rd.



Assessment Roll and Tax List of Real Property in the Town of Crooked Lake

Cass County, Minnesota, for Taxes for the Year 1959.

Indicate Type of Property: R-Residential, C-Commercial, I-Industrial, U-Utility, F-Farm, L-Lakeshore, T-Timber, M-Mineral

Table with columns: IN WHOSE NAME ASSESSED, TO WHOM TRANSFERRED, DESCRIPTION OF PROPERTY, TRUE AND FULL VALUATIONS, ASSESSED VALUATIONS, VALUATIONS BY SCHOOL DISTRICTS AS EQUALIZED BY DEPARTMENT OF TAXATION, TAXES, PAID, WHEN PAID, etc.

Real Estate

Vertical text on the right edge: Auditor's Flat of Lake, Paul B. Bjoers, Rosevelt Lake, etc.





Assessment Roll and Tax List of Real Property in the Town of Crooked Lake

Cass County, Minnesota, for Taxes for the Year 1959.

Indicate Type of Property: R-Residential, C-Commercial, I-Industrial, U-Utility, F-Farm, L-Lakeshore, T-Timber, M-Mineral

Main table with columns: IN WHOSE NAME ASSESSED, TO WHOM TRANSFERRED, DESCRIPTION OF PROPERTY, TRUE AND FULL VALUATIONS, ASSESSED VALUATIONS, VALUATIONS BY SCHOOL DISTRICTS AS EQUALIZED BY DEPARTMENT OF TAXATION, SOLD FOR TAXES, PAID, WHEN PAID, SPECIAL TAXES, TOTAL TAXES, etc.

Handwritten notes: 240, 80, 160

Vertical text on the right edge: Auditor's Plat of Lake Crooked Lake, Paul E. Biggs, Roseville and Helix

Assessment Roll and Tax List of Real Property in the Town of Crooked Lake

Cass County, Minnesota, for Taxes for the Year 1959.

\* Indicate Type of Property: R-Residential, C-Commercial, I-Industrial, U-Utility, F-Farm, L-Lakeshore, T-Timber, M-Mineral

Table with columns: IN WHOSE NAME ASSESSED, TO WHOM TRANSFERRED, DESCRIPTION OF PROPERTY, TRUE AND FULL VALUATIONS, ASSESSED VALUATIONS, VALUATIONS BY SCHOOL DISTRICTS AS EQUALIZED BY DEPARTMENT OF TAXATION, SOLD FOR TAXES, SPECIAL TAXES, TOTAL TAXES, PAID, WHEN PAID, Number of Receipt, March Settlement 1960, June Settlement 1960, November Settlement 1960, Penalty, Collections to First Monday in January 1961, Delinquent on First Monday in January 1961, Total Delinquent Tax and Penalty, REMARKS.

(See 20 cont. on next page)

Vertical text on the right edge of the page, including 'Auditor's Plat of Lake' and other marginal notes.













N Line of Govt Lot 4 Sec 23-139-26

	1.36 acs			
	2.05 acs	{	Walter M & Alberta J Falk	A
	4.10 acs		Edna & Helen Brunna	B
40'	<del>Ed Peters 2 acs</del> <del>Ed Nelson 12 acs</del>		Edna Randsahl Tophler & Joseph Kohler	C & D
	6.12 acs			
	6.27 acs	{	Harold B & Geo W Olson	E
	3.21 acs	{	Edna & Helen Brunna	G
	3.22 acs		Edna & Helen Brunna	H
	3.29 acs		Lawrence & Loretta Progers	I
	3.31 acs		Louisa J & Pearl M Sandtrack	J
	3.35 acs		Minnie J Falk	K
	3.38 acs	{	Edna J & Delia M Smith	L
	3.40 acs			
	4.51 acs		Edna J & Delia M Smith	N
			Edna J & Delia M Smith	O
	9.70 acs			P

100' 50' 33'  
100'  
150'  
75'  
75'  
75'  
75'  
75'  
75'  
75'  
75'  
75'  
100'  
210 S

S. Line of Govt Lot 4

Assessment Roll and Tax List of Real Property in the Town of Crooked Lake

Indicate Type of Property: R-Residential, C-Commercial, I-Industrial, U-Utility, F-Farm, L-Lakeshore, T-Timber, M-Mineral

Cass County, Minnesota, for Taxes for the Year 1959.

Table with columns: IN WHOSE NAME ASSESSED, TO WHOM TRANSFERRED, DESCRIPTION OF PROPERTY, TRUE AND FULL VALUATIONS, ASSESSED VALUATIONS, VALUATIONS BY SCHOOL DISTRICTS AS EQUALIZED BY DEPARTMENT OF TAXATION, TAXES, PAID, WHEN PAID, etc.

Real Estate

Vertical text on the right edge of the page, including 'Auditor's Plat of Lake' and other administrative markings.



Assessment Roll and Tax List of Real Property in the Town of Crooked Lake

Cass County, Minnesota, for Taxes for the Year 1959.

Indicate Type of Property: R-Residential, C-Commercial, I-Industrial, U-Utility, F-Farm, L-Lakeshore, T-Timber, M-Mineral

Table with columns: IN WHOSE NAME ASSESSED, TO WHOM TRANSFERRED, DESCRIPTION OF PROPERTY, TRUE AND FULL VALUATIONS, ASSESSED VALUATIONS, VALUATIONS BY SCHOOL DISTRICTS AS EQUALIZED BY DEPARTMENT OF TAXATION, TAXES, PAID, WHEN PAID, Number of Receipt, March Settlement 1960, June Settlement 1960, November Settlement 1960, Collections to First Monday in January 1961, Delinquent on First Monday in January 1961, Total Delinquent Tax and Penalty, REMARKS.

Vertical text on the right edge: Auditor's Plat of Lake Crooked Lake, Cass County, Minnesota, 1959

















Assessment Roll and Tax List of Real Property in the Town of Carleton Lake

Cass County, Minnesota, for Taxes for the Year 1959.

Table with columns: IN WHOSE NAME ASSESSED, TO WHOM TRANSFERRED, DESCRIPTION OF PROPERTY, TRUE AND FULL VALUATIONS, ASSESSED VALUATIONS, VALIDATIONS BY SCHOOL DISTRICTS AS EQUALIZED BY DEPARTMENT OF TAXATION, Tax including State Homestead, SPECIAL TAXES, TOTAL TAXES, PAID, WHEN PAID, Number of Receipt, March Settlement 1960, June Settlement 1960, November Settlement 1960, Penalty, Collections to First Monday in January 1961, Delinquent on First Monday in January 1961, Total Delinquent Tax and Penalty, REMARKS.

Real Est.

Vertical text on the right edge of the page, including 'HARVON', 'Auctioneer's Plat of Lake', 'Sale, Bids, Roosters', 'Hobbs', 'Roosters Lake Heights & So'.

Assessment Roll and Tax List of Real Property in the Town of Crooked Lake

Cass County, Minnesota, for Taxes for the Year 1959.

Indicate Type of Property: R-Residential, C-Commercial, I-Industrial, U-Utility, F-Farm, L-Lakeshore, T-Timber, M-Mineral

Table with columns: IN WHOSE NAME ASSESSED, TO WHOM TRANSFERRED, SUBDIVISION, TRUE AND FULL VALUATIONS, ASSESSED VALUATIONS, VALUATIONS BY SCHOOL DISTRICTS AS EQUALIZED BY DEPARTMENT OF TAXATION, SPECIAL TAXES, TOTAL TAXES, PAID, WHEN PAID, Number of Receipt, March Settlement 1960, June Settlement 1960, November Settlement 1960, Penalty, Collections to First Monday in January 1961, Delinquent on First Monday in January 1961, Total Delinquent Tax and Penalty, REMARKS.

Real Est

Rows

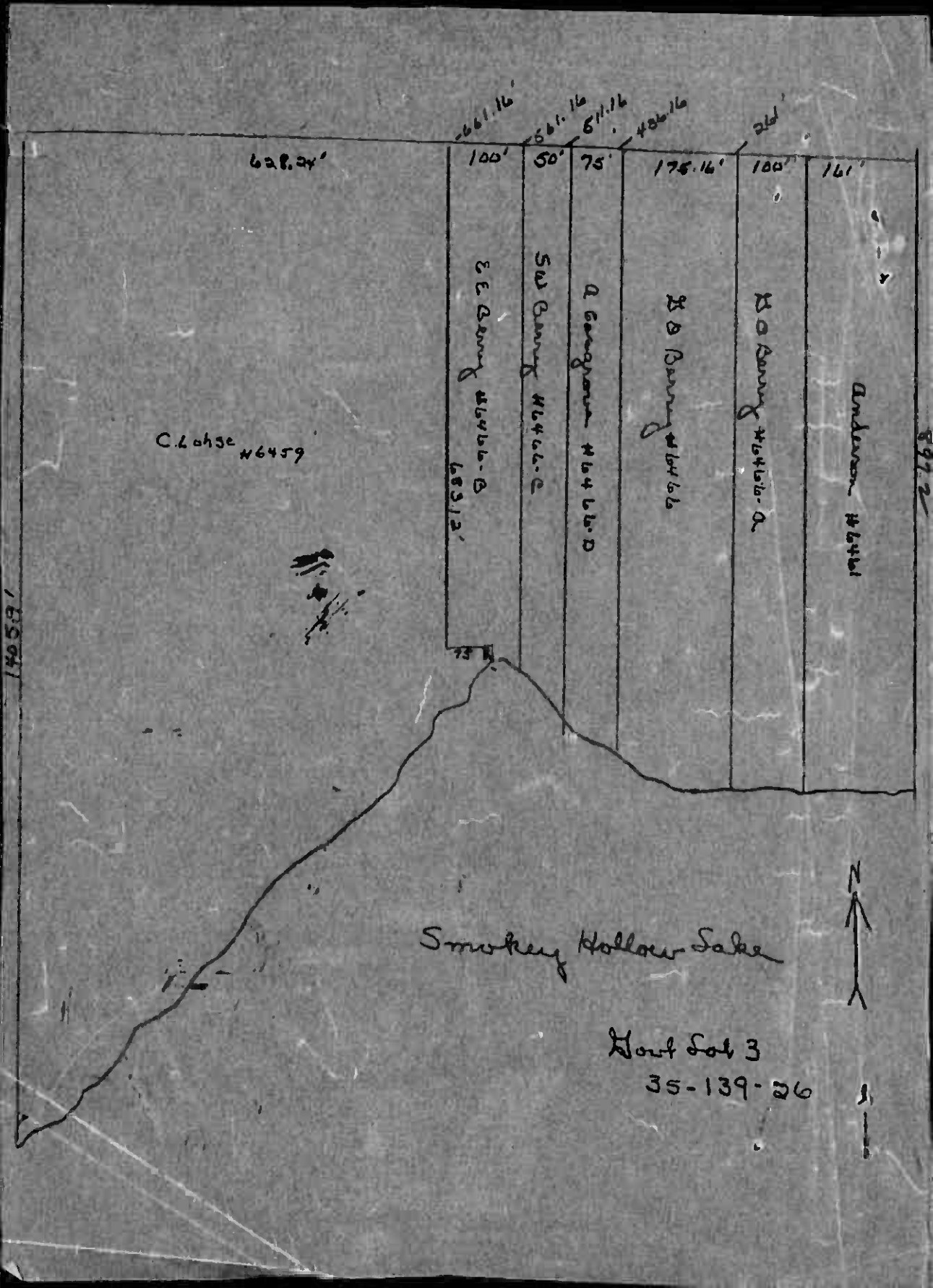
Auditor's Plat of Lake

Scale: 1/2" = 100'

Boosterlet Lake Heights & 900

Boosterlet Lake Heights & 900





628.24'

661.16' 561.16' 511.16' 482.16' 261'

100'

50'

75'

175.16'

100'

141'

C. Lohse #6459

E. E. Gentry #6461-B 683.12'

S. W. Gentry #6461-C

A. Gentry #6461-D

S. W. Gentry #6461-E

S. W. Gentry #6461-F

Anderson #6461

Smoky Hollow Lake

Plot Lot 3  
35-139-26



8972

165041







Assessment Roll and Tax List of Real Property in the Town of Coon Lake, Cass County, Minnesota

Cass County, Minnesota, for Taxes for the Year 1959.

Table with columns: IN WHOSE NAME ASSESSED, TO WHOM TRANSFERRED, SUBDIVISION, TRUE AND FULL VALUATIONS, ASSESSED VALUATIONS, VALUATIONS BY SCHOOL DISTRICTS AS EQUALIZED BY DEPARTMENT OF TAXATION, SOLD FOR TAXES, PAID, WHEN PAID, Number of Receipt, March Settlement 1960, June Settlement 1960, November Settlement 1960, Penalty, Delinquent on First Monday in January 1961, Total Delinquent Tax and Penalty, REMARKS.

Real Estate

Plat of Outlot A of ...



Assessment Roll and Tax List of Real Property in the Town of Crooked Lake

Cass County, Minnesota, for Taxes for the Year 1959.

Form 50 - MILLER-DAVIS CO., MINNEAPOLIS. \*Indicate Type of Property: R-Residential, C-Commercial, I-Industrial, U-Utality, F-Farm, L-Lakeshore, T-Timber, M-Mineral

The Narrows  
Auditor's Plat of Lake Washburn Outlots

Table with columns: IN WHOSE NAME ASSESSED, TO WHOM TRANSFERRED, DESCRIPTION OF PROPERTY, TRUE AND FULL VALUATIONS, ASSESSED VALUATIONS, VALUATIONS BY SCHOOL DISTRICTS AS EQUALIZED BY DEPARTMENT OF TAXATION, TAXES, PAID, WHEN PAID, Number of Receipt, March Settlement 1960, June Settlement 1960, Penalty, November Settlement 1960, Penalty, Collections to First Monday in January 1961, Penalty, Delinquent on First Monday in January 1961, Total Delinquent Tax and Penalty, REMARKS.

Plat of Outlot A. of Lake Washburn  
Twin Falls, Brogs Roosevelt  
Towns Halsted  
Roosevelt Lake Halsted & Brogs

Assessment Roll and Tax List of Real Property in the Town of Crooked Lake

Cass County, Minnesota, for Taxes for the Year 1959.

Form 30 - WILSON-DAVIS CO., MINNEAPOLIS. Indicate Type of Property: R-Residential, C-Commercial, I-Industrial, U-Utility, F-Farm, L-Lakeshore, T-Timber, M-Mineral

The Narrows, Stor's First of Lakeburn Outlots, Tingle Bros. Roosevelt Trails

Table with columns: IN WHOSE NAME ASSESSED, TO WHOM TRANSFERRED, SUBDIVISION, TRUE AND FULL VALUATIONS, ASSESSED VALUATIONS, VALUATIONS BY SCHOOL DISTRICTS AS EQUALIZED BY DEPARTMENT OF TAXATION, SOLD FOR TAXES, PAID, WHEN PAID, etc.

Handwritten notes: Lots 2-3-4-7-7 NW 1/4 Sec. 25 of Twp 6, Sec 35-139-26, Block 1 - Lots 1-38 on British Supl, Blocks 2-3, Robert D. & Agnes B. Plant, William L. & Lauretta M. Dowd, Thomas J. & Mildred L. Reghur, Florence Cunningham & Minnie Nelson

Paid Under Protest

Vertical text on the right edge: Brog Lake, Plat of Outlot A. of, Iowa Rehnstr, Roosevelt Lake Helgott Soc

Handwritten totals at the bottom: 242, 6408, 154, 6562, 2516, 2826, 1220









Assessment Roll and Tax List of Real Property in the Town of Crooked Lake

Cass County, Minnesota, for Taxes for the Year 1959.

Form 50 - MILLER-DAVIS CO. MINNEAPOLIS. Indicate Type of Property: R-Residential, C-Commercial, I-Industrial, U-Utility, F-Farm, L-Lakeshore, T-Timber, M-Mineral

Real Estate, The Narrows, The Flat of Lake, Burn Outlots, Mingle Bros, Roosevelt Trails

Table with columns: IN WHOSE NAME ASSESSED, TO WHOM TRANSFERRED, DESCRIPTION OF PROPERTY, TRUE AND FULL VALUATIONS, ASSESSED VALUATIONS, VALUATIONS BY SCHOOL DISTRICTS AS EQUALIZED BY DEPARTMENT OF TAXATION, SOLD FOR TAXES, SPECIAL TAXES, TOTAL TAXES, PAID, WHEN PAID, Number of Receipt, March Settlement 1960, June Settlement 1960, November Settlement 1960, Collections to First Monday in January 1961, Delinquent on First Monday in January 1961, Total Delinquent Tax and Penalty, REMARKS.

Handwritten notes: Oscar & Helma R. Mynen, Single Bros Roosevelt Trails, 188 no no T, 2 no no T

Handwritten notes: Ivarn J. & Myrtle J. Arnold, 1 8 no no T, 7 no no T, 8 no no T

Handwritten notes: Benjamin R. & Virginia B. Coriff, 4 no no T, 5 no no T, 6 no no T, 7 no no T

Handwritten notes: # 12, 77, 29, 2354, 44, 23 98, 11 54, 216, 1028

Vertical text on the right edge: The Big Lake, The Flat of Lake, Burn Outlots, Plat of Outlot A. of, Ivarn Hellette, Roosevelt Lake Hellette & Soc



Assessment Roll and Tax List of Real Property in the Town of Crooked Lake

Indicate Type of Property: R-Residential, C-Commercial, I-Industrial, U-Utility, F-Farm, L-Lakeshore, T-Timber, M-Mineral

Table with columns: IN WHOSE NAME ASSESSED, TO WHOM TRANSFERRED, SUBDIVISION, TRUER AND FULL VALUATIONS, ASSESSED VALUATIONS, FINAL EQUALIZED VALUE. Includes handwritten entries for property owners like Mary Agnes DeBate and various tax values.

Cass County, Minnesota, for Taxes for the Year 1959.

Table with columns: SOLD FOR TAXES, VALUATIONS BY SCHOOL DISTRICTS AS EQUALIZED BY DEPARTMENT OF TAXATION, SPECIAL TAXES, TOTAL TAXES, PAID, WHEN PAID, Number of Receipts, March Settlement 1960, June Settlement 1960, November Settlement 1960, Penalty, Collections to First Monday in January 1961, Delinquent on First Monday in January 1961, Total Delinquent Tax and Penalty, REMARKS. Includes handwritten entries for tax amounts and payment dates.

Handwritten summary at the bottom of the tax table: 485, 125, 310, 8206, 118, 8344, 1112, 70.02, 330.

Vertical text on the left edge: The Narrows, The Flat of Lake, Burn Outlots, Tingdale Bros, Roosevelt Trails.

Vertical text on the right edge: Big Lake, Plat of Outlot A, of, Iwanna Helletts, Roosevelt Lake Heights & Soc.







Assessment Roll and Tax List of Real Property in the Town of Crooked Lake

Cass County, Minnesota, for Taxes for the Year 1959.

Form 30 - MILLER-DAVIS CO., MINNEAPOLIS. Indicate Type of Property: R-Residential, C-Commercial, I-Industrial, U-Utility, F-Farm, L-Lakeshore, T-Timber, M-Mineral

Table with columns: IN WHOSE NAME ASSESSED, TO WHOM TRANSFERRED, SUBDIVISION, TRUE AND FULL VALUATIONS, ASSESSED VALUATIONS, VALUATIONS BY SCHOOL DISTRICTS AS EQUALIZED BY DEPARTMENT OF TAXATION, TAXES, PAID, WHEN PAID, etc.

Vertical text on the left margin: The Flat of Lake, Burn Outlots, Mingdale Bros. Roosevelt Trails

Vertical text on the right margin: Plat of Outlot A of, Iowaa Heights, Roosevelt Lake Heights & So

Assessment Roll and Tax List of Real Property in the Town of Crooked Lake

Cass County, Minnesota, for Taxes for the Year 1959.

Map of Lake Superior Outlots, The Narrows, Ingdale Bros. Roosevelt Trails

Table with columns: IN WHOSE NAME ASSESSED, TO WHOM TRANSFERRED, SUBDIVISION, TRUE AND FULL VALUATIONS, ASSESSED VALUATIONS, FINAL EQUALIZED VALUE. Includes handwritten entries for Rodney A. & Sada H. Peterson and Peter Peterson.

Table with columns: VALUATIONS BY SCHOOL DISTRICTS AS EQUALIZED BY DEPARTMENT OF TAXATION, TAX INCLUDING STATE HOMESTEAD, SPECIAL TAXES, TOTAL TAXES, PAID, WHEN PAID, Number of Receipt, March Settlement 1960, June Settlement 1960, November Settlement 1960, Collections to First Monday in January 1961, Delinquent on First Monday in January 1961, Total Delinquent Tax and Penalty, REMARKS.

Map of Lake Superior Outlots, The Narrows, Ingdale Bros. Roosevelt Trails, Plat of Outlot A. of



Assessment Roll and Tax List of Real Property in the Town of Carleton Lake

Cass County, Minnesota, for Taxes for the Year 1959.

Form 50 - MILLER-DAVIS CO., MINNEAPOLIS. Indicate Type of Property: R-Residential, C-Commercial, I-Industrial, U-Utility, F-Farm, L-Lakeshore, T-Timber, M-Mineral

The Ma... for's Flat of Lake... burn Outlots... Ringdale Bros. Roosevelt Trails

Table with columns: IN WHOSE NAME ASSESSED, TO WHOM TRANSFERRED, DESCRIPTION OF PROPERTY, TRUE AND FULL VALUATIONS, ASSESSED VALUATIONS, VALUATIONS BY SCHOOL DISTRICTS AS EQUALIZED BY DEPARTMENT OF TAXATION, TAX INCLUDING STATE HOMESTEAD, SPECIAL TAXES, TOTAL TAXES, PAID, WHEN PAID, Number of Receipt, March Settlement 1960, June Settlement 1960, Penalty, November Settlement 1960, Collections to First Monday in January 1961, Delinquent on First Monday in January 1961, Total Delinquent Tax and Penalty, REMARKS.

Ringdale Lake... Plat of Outlot A. of... Iovanna Helge... Roosevelt Lake Heights, Soo



Assessment Roll and Tax List of Real Property in the Town of Carver Lake

Indicate Type of Property: R-Residential, C-Commercial, I-Industrial, U-Utility, F-Farm, L-Lakeshore, T-Timber, M-Mineral

Cass County, Minnesota, for Taxes for the Year 1959.

Table with columns: IN WHOSE NAME ASSESSED, TO WHOM TRANSFERRED, DESCRIPTION OF PROPERTY, TRU AND FULL VALUATIONS, ASSESSED VALUATIONS, VALUATIONS BY SCHOOL DISTRICTS AS EQUALIZED BY DEPARTMENT OF TAXATION, SOLD FOR TAXES, SPECIAL TAXES, TOTAL TAXES, PAID, WHEN PAID, Number of Receipt, March Settlement 1960, June Settlement 1960, November Settlement 1960, Penalty, Collections to First Monday in January 1961, Delinquent on First Monday in January 1961, Total Delinquent Tax and Penalty, REMARKS.

Vertical text on the left edge: 'Mingdale Bros Roosevelt Trails' and 'Roosevelt Trails'.

Vertical text on the right edge: 'Mingdale Bros Roosevelt Trails' and 'Roosevelt Trails'.





Assessment Roll and Tax List of Real Property in the Town of Crooked Lake

Indicate Type of Property: R-Residential, C-Commercial, I-Industrial, U-Utility, F-Farm, L-Lakeshore, T-Timber, M-Mineral

Cass County, Minnesota, for Taxes for the Year 1959.

Table with columns: IN WHOSE NAME ASSESSED, TO WHOM TRANSFERRED, DESCRIPTION OF PROPERTY, TRUE AND FULL VALUATIONS, ASSESSED VALUATIONS, VALUATIONS BY SCHOOL DISTRICTS AS EQUALIZED BY DEPARTMENT OF TAXATION, TAXES, PAID, WHEN PAID, Number of Receipt, March Settlement 1960, June Settlement 1960, November Settlement 1960, Collections to First Monday in January 1961, Delinquent on First Monday in January 1961, Total Delinquent Tax and Penalty, REMARKS.

Vertical text on the left margin: The No. of Lots, Burn Outlots, Roosevelt Trails, Bear Ridge Land Co, etc.

Vertical text on the right margin: Part of Outlot A of I. W. ... Torrance Hellett, Roosevelt Lake Hellett & Co

Assessment Roll and Tax List of Real Property in the Town of Coon Lake

Indicate Type of Property: R-Residential, C-Commercial, I-Industrial, U-Utility, F-Farm, L-Lakeshore, T-Timber, M-Mineral

Table with columns: IN WHOSE NAME ASSESSED, TO WHOM TRANSFERRED, DESCRIPTION OF PROPERTY, TRUE AND FULL VALUATIONS, ASSESSED VALUATIONS, FINAL EQUALIZED VALUE.

Cass County, Minnesota, for Taxes for the Year 1959.

Table with columns: SOLD FOR TAXES, VALUATIONS BY SCHOOL DISTRICTS AS EQUALIZED BY DEPARTMENT OF TAXATION, SPECIAL TAXES, TOTAL TAXES, PAID, WHEN PAID, Number of Receipt, March Settlement 1960, June Settlement 1960, November Settlement 1960, Collections to First Monday in January 1961, Delinquent on First Monday in January 1961, Total Delinquent Tax and Penalty, REMARKS.

Vertical text on the left edge of the page: The 11th, 12th, 13th, 14th, 15th, 16th, 17th, 18th, 19th, 20th.

Vertical text on the right edge of the page: The 11th, 12th, 13th, 14th, 15th, 16th, 17th, 18th, 19th, 20th.

Assessment Roll and Tax List of Real Property in the Town of Crooked Lake

Form 50 MILLER-DAVIS CO., MINNEAPOLIS

Indicate Type of Property: R-Residential, C-Commercial, I-Industrial, U-Utility, F-Farm, L-Lakeshore, T-Timber, M-Mineral

Cass County, Minnesota, for Taxes for the Year 1959.

Vertical text on the left edge: The No. of the Plat of Lake Superior Outlots, Mingdale Bros. Roosevelt Trails, and other property descriptions.

Main table with columns: IN WHOSE NAME ASSESSED, TO WHOM TRANSFERRED, SUBDIVISION, TRUE AND FULL VALUATIONS (RURAL, ALL OTHER, MACHINERY), ASSESSED VALUATIONS (Homestead, Timber, etc.), TOTAL ASSESSED VALUE, and FINAL EQUALIZED VALUE.

Tax payment table with columns: VALUATIONS BY SCHOOL DISTRICTS AS EQUALIZED BY DEPARTMENT OF TAXATION, TAX INCLUDING STATE HOMESTEAD, SPECIAL TAXES, TOTAL TAXES, PAID, WHEN PAID, Number of Receipt, March Settlement, June Settlement, November Settlement, Collections to First Monday in January 1961, Delinquent on First Monday in January 1961, Total Delinquent Tax and Penalty, and REMARKS.

Vertical text on the right edge: The No. of the Plat of Lake Superior Outlots, Mingdale Bros. Roosevelt Trails, and other property descriptions.







Assessment Roll and Tax List of Real Property in the Town of Crooked Lake

Form 50 MILLER-DAVIS CO., MINNEAPOLIS Indicate Type of Property: R-Residential, C-Commercial, I-Industrial, U-Utility, F-Farm, L-Lakeshore, T-Timber, M-Mineral

Cass County, Minnesota, for Taxes for the Year 1959.

Table with columns: IN WHOSE NAME ASSESSED, TO WHOM TRANSFERRED, SUBDIVISION, TRUE AND FULL VALUATIONS, ASSESSED VALUATIONS, VALUATIONS BY SCHOOL DISTRICTS AS EQUALIZED BY DEPARTMENT OF TAXATION, SOLD FOR TAXES, SPECIAL TAXES, TOTAL TAXES, PAID, WHEN PAID, Number of Receipt, March Settlement 1960, June Settlement 1960, Penalty, November Settlement 1960, Penalty, Collections to First Monday in January 1961, Penalty, Delinquent on First Monday in January 1961, Total Delinquent Tax and Penalty, REMARKS.

Vertical text on the left edge: The Har..., Plot of Lake..., Burn Outlots..., Ringdale Bros..., Roosevelt Trails

Vertical text on the right edge: Plot of Lake..., Plot of Outlot A of..., Iorana Helberg's..., Ringdale Bros..., Roosevelt Lake Helgholt & Soo





Assessment Roll and Tax List of Real Property in the Town of Crooked Lake

Form 30 - MILLER-DAVIS CO., MINNEAPOLIS

Indicate Type of Property: R-Residential, C-Commercial, I-Industrial, U-Utility, F-Farm, L-Lakeshore, T-Timber, M-Mineral

Cass County, Minnesota, for Taxes for the Year 1959.

Table with columns: IN WHOSE NAME ASSESSED, TO WHOM TRANSFERRED, SUBDIVISION, TRUE AND FULL VALUATIONS, VALUATIONS BY SCHOOL DISTRICTS AS EQUALIZED BY DEPARTMENT OF TAXATION, TAXES, PAID, WHEN PAID, etc.

Vertical text on the left edge: The N... Roosevelt Lake Heights...

Vertical text on the right edge: Plat of Outlot A of... Roosevelt Lake Heights...

Assessment Roll and Tax List of Real Property in the Town of Carrooked Lake

Indicate Type of Property: R-Residential, C-Commercial, I-Industrial, U-Utility, F-Farm, L-Lakeshore, T-Timber, M-Mineral

Cass County, Minnesota, for Taxes for the Year 1959.

Table with columns: IN WHOSE NAME ASSESSED, TO WHOM TRANSFERRED, SUBDIVISION, DESCRIPTION OF PROPERTY, TRUE AND FULL VALUATIONS, ASSESSED VALUATIONS, VALUATIONS BY SCHOOL DISTRICTS AS EQUALIZED BY DEPARTMENT OF TAXATION, TAXES, PAID, WHEN PAID, etc.

Vertical text on the left margin: The Plat of Lake Auburn Outlots, The Plat of Outlot A of 1/2 Neighborn Lake and Plat of 1/2 Neighborn Lake, The Plat of Outlot A of 1/2 Neighborn Lake, Lake Lawrence Point, Auburn Plots

Vertical text on the right margin: The Plat of Lake Auburn Outlots, The Plat of Outlot A of 1/2 Neighborn Lake and Plat of 1/2 Neighborn Lake, The Plat of Outlot A of 1/2 Neighborn Lake, Lake Lawrence Point, Auburn Plots

























Assessment Roll and Tax List of Real Property in the Town of Crooked Lake

Cass County, Minnesota, for Taxes for the Year 1959.

Form 30 MILLER-DAVIES CO., MINNEAPOLIS. Indicate Type of Property: R-Residential, C-Commercial, I-Industrial, U-Utility, F-Farm, L-Lakeshore, T-Timber, M-Mineral.

Table with columns: IN WHOSE NAME ASSESSED, TO WHOM TRANSFERRED, SUBDIVISION, DESCRIPTION OF PROPERTY, TRUE AND FULL VALUATIONS, ASSESSED VALUATIONS, VALUATIONS BY SCHOOL DISTRICTS AS EQUALIZED BY DEPARTMENT OF TAXATION, TAXES, PAID, WHEN PAID, and REMARKS. Includes handwritten entries for property owners like Albert H. & Anna J. Fahr and John E. G. & Frances Fahr.

Vertical text on the left margin: Roosevelt Soo Lake Heights, Brown's Washburn Lake Add'n, etc.

Vertical text on the right margin: Ringdale Bros, Lake Laurence Point, etc.



Assessment Roll and Tax List of Real Property in the Town of Crowded Lake

Cass County, Minnesota, for Taxes for the Year 1959.

Form 308-KILLER-DAVIS CO., MINNEAPOLIS \* Indicate Type of Property: R-Residential, C-Commercial, I-Industrial, U-Utility, F-Farm, L-Lakeshore, T-Timber, M-Mineral

Table with columns: IN WHOSE NAME ASSESSED, TO WHOM TRANSFERRED, DESCRIPTION OF PROPERTY, TRUE AND FULL VALUATIONS, ASSESSED VALUATIONS, and FINAL EQUALIZED VALUE.

Table with columns: SOLD FOR TAXES, VALUATIONS BY SCHOOL DISTRICTS AS EQUALIZED BY DEPARTMENT OF TAXATION, SPECIAL TAXES, TOTAL TAXES, PAID, WHEN PAID, Number of Receipt, March Settlement 1960, June Settlement 1960, Penalty, November Settlement 1960, Penalty, Collections to First Monday in January 1961, Penalty, Delinquent on First Monday in January 1961, Total Delinquent Tax and Penalty, REMARKS.

Vertical text on the left edge: Roosevelt Soo, Lake Heights, Brown's Washburn Lake Add'n, Lake Heights, Brown's Washburn Lake Add'n, Roosevelt Soo, Lake Heights, Brown's Washburn Lake Add'n, Lake Heights, Brown's Washburn Lake Add'n.

Vertical text on the right edge: Washburn Outlots, Brown's Washburn Lake Add'n, Roosevelt Soo, Lake Heights, Brown's Washburn Lake Add'n, Lake Heights, Brown's Washburn Lake Add'n.

Assessment Roll and Tax List of Real Property in the Town of Crooked Lake

Cass County, Minnesota, for Taxes for the Year 1959.

Form 30-MILLER-DAVIS-20-MINNEAPOLIS Indicate Type of Property: R-Residential, C-Commercial, I-Industrial, U-Utility, F-Farm, L-Lakeshore, T-Timber, M-Mineral

Table with columns: IN WHOSE NAME ASSESSED, TO WHOM TRANSFERRED, SUBDIVISION, TRUE AND FULL VALUATIONS, ASSESSED VALUATIONS, VALUATIONS BY SCHOOL DISTRICTS AS EQUALIZED BY DEPARTMENT OF TAXATION, TAXES, PAID, WHEN PAID, SPECIAL TAXES, TOTAL TAXES, MARCH SETTLEMENT 1960, JUNE SETTLEMENT 1960, PENALTY, NOVEMBER SETTLEMENT 1960, DELINQUENT ON FIRST MONDAY IN JANUARY 1961, TOTAL DELINQUENT TAX AND PENALTY, REMARKS.

Vertical text on the left margin: Roosevelt, Washburn Lake, Ashburn Outlots, etc.

Vertical text on the right margin: Ashburn Outlots, Washburn Lake, etc.

Assessment Roll and Tax List of Real Property in the Town of Crooked Lake

Cass County, Minnesota, for Taxes for the Year 1959.

Indicate Type of Property: R-Residential, C-Commercial, I-Industrial, U-Utility, F-Farm, L-Lakeshore, T-Timber, M-Mineral

Main table with columns: IN WHOSE NAME ASSESSED, TO WHOM TRANSFERRED, SUBDIVISION, DESCRIPTION OF PROPERTY, TRUE AND FULL VALUATIONS, ASSESSED VALUATIONS, VALUATIONS BY SCHOOL DISTRICTS AS EQUALIZED BY DEPARTMENT OF TAXATION, TAXES, PAID, WHEN PAID, etc.

Vertical text on the left margin: 'Mingdale Bros. Washburn Lake of Outlot A. of Ashburn Outlots of Washburn Outlots'

Vertical text on the right margin: 'Mingdale Bros. Washburn Lake of Outlot A. of Ashburn Outlots of Washburn Outlots'

Assessment Roll and Tax List of Real Property in the Town of Crooked Lake

Indicate Type of Property: R-Residential, C-Commercial, I-Industrial, U-Utility, F-Farm, L-Lakeshore, T-Timber, M-Mineral

Form 30 MILLER-DAVIS CO. MINNEAPOLIS

Table with columns: IN WHOSE NAME ASSESSED, TO WHOM TRANSFERRED, SUBDIVISION, TRUE AND FULL VALUATIONS, ASSESSED VALUATIONS, FINAL EQUALIZED VALUE. Includes entries for John E. & Frances Jehu, Sidney U. Schramberg, Rudolph G. Lader, Norman & Charlotte Magnus, Albert J. & Anna J. Jehu, John L. Schultzy.

Cass County, Minnesota, for Taxes for the Year 1959.

Table with columns: SOLD FOR TAXES, VALUATIONS BY SCHOOL DISTRICTS AS EQUALIZED BY DEPARTMENT OF TAXATION, TAX INCLUDING STATE HOMESTEAD, STATE TAX ON NON-HOMESTEAD, SPECIAL TAXES, TOTAL TAXES, PAID, WHEN PAID, Number of Receipt, March Settlement 1960, June Settlement 1960, November Settlement 1960, Collections to First Monday in January 1961, Delinquent on First Monday in January 1961, Total Delinquent Tax and Penalty, REMARKS. Includes entries for 1-20 with tax amounts and payment dates.

Vertical text on the left edge: 'Washburn Pines', 'Mingdale Bros.', 'of Outlot A. of and of I. Wash. Outlots', 'Washburn Pines', 'Mingdale Bros.', 'of Outlot A. of and of I. Wash. Outlots', 'Washburn Pines', 'Mingdale Bros.', 'of Outlot A. of and of I. Wash. Outlots'.

Vertical text on the right edge: 'Sunset Builders Beach lot of Part of Lot 7 & 8 Shares', 'as a Party on', 'Andresen Bay Jr's Bay'.

Assessment Roll and Tax List of Real Property in the Town of Carleton Lake

Indicate Type of Property: R-Residential, C-Commercial, I-Industrial, U-Utility, F-Farm, L-Lakeshore, T-Timber, M-Mineral

Cass County, Minnesota, for Taxes for the Year 1959.

Table with columns: IN WHOSE NAME ASSESSED, TO WHOM TRANSFERRED, DESCRIPTION OF PROPERTY, TRUE AND FULL VALUATIONS, ASSESSED VALUATIONS, FINAL EQUALIZED VALUE. Includes handwritten entries for property owners like Everett H. & Helene Nyberg, Robert C. Swenberg, etc.

Table with columns: SOLD FOR TAXES, VALUATIONS BY SCHOOL DISTRICTS AS EQUALIZED BY DEPARTMENT OF TAXATION, Tax including State Homestead, SPECIAL TAXES, TOTAL TAXES, PAID, WHEN PAID, Number of Receipt, March Settlement 1960, June Settlement 1960, Penalty, November Settlement 1960, Penalty, Collections to First Monday in January 1961, Penalty, Delinquent on First Monday in January 1961, Total Delinquent Tax and Penalty, REMARKS.

Vertical text on the left edge of the page, including 'Magdale Bros.', 'Washburn Lanes', and 'Washburn Pines'.

Vertical text on the right edge of the page, including 'Lavelle Haggd Lakes', 'Plat of Part of Lot 7 & 8 Shares', and 'Andresen Bay'.











Assessment Roll and Tax List of Real Property in the Town of Crooked Lake

Cass County, Minnesota, for Taxes for the Year 1959.

Form 30 - MILLER-DAVIS CO., MINNEAPOLIS. Indicate Type of Property: R-Residential, C-Commercial, I-Industrial, U-Utility, F-Farm, L-Lakeshore, T-Timber, M-Mineral

Main table with columns: IN WHOSE NAME ASSESSED, TO WHOM TRANSFERRED, SUBDIVISION, DESCRIPTION OF PROPERTY, TRUE AND FULL VALUATIONS, ASSESSED VALUATIONS, VALUATIONS BY SCHOOL DISTRICTS AS EQUALIZED BY DEPARTMENT OF TAXATION, TAXES, PAID, WHEN PAID, etc.

Vertical text on the left margin: Washburn Pines, Washburn Lake, Pines A Plenty on Lake Washburn, etc.

Vertical text on the right margin: Washburn Lake Addition, Pines A Plenty on Lake Washburn, etc.

Assessment Roll and Tax List of Real Property in the Town of Carver Lake

Cass County, Minnesota, for Taxes for the Year 1959.

\* Indicate Type of Property: R-Residential, C-Commercial, I-Industrial, U-Utility, F-Farm, L-Lakeshore, T-Timber, M-Mineral

Table with columns: IN WHOSE NAME ASSESSED, TO WHOM TRANSFERRED, SUBDIVISION, Sec. or Lot, Town or Block, Reg., Number of Acres of Land, No. School District, Indicate Homestead Tax, Indicate Agricultural Tax, Indicate Type of Property, TRUE AND FULL VALUATIONS (LAND, BUILDINGS, MACHINERY, TOTAL), ASSESSED VALUATIONS (RURAL, ALL OTHER, MACHINERY, TOTAL ASSESSED), VALUATIONS BY SCHOOL DISTRICTS AS EQUALIZED BY DEPARTMENT OF TAXATION, SOLD FOR TAXES, SPECIAL TAXES, TOTAL TAXES, PAID, WHEN PAID, Number of Receipt, March Settlement, June Settlement, Penalty, November Settlement, Penalty, Collections to First Monday in January 1961, Delinquent on First Monday in January 1961, Total Delinquent Tax and Penalty, REMARKS.

Vertical text on the left margin: 'Mingdale Bros', 'Washburn Lake', 'Pines A Pines on Lake Washburn', 'Andresen Bay', 'Washburn Pines'.

Vertical text on the right margin: 'Karl's Home Bldg', 'Brewitt Lake Addition', 'Office of the Assessor', 'Inspector's Bay'.











Assessment Roll and Tax List of Real Property in the Town of Crooked Lake

Indicate Type of Property: R-Residential, C-Commercial, I-Industrial, U-Utility, F-Farm, L-Lakeshore, T-Timber, M-Mineral

Table with columns: IN WHOSE NAME ASSESSED, TO WHOM TRANSFERRED, SUBDIVISION, Sec. or Lot, Town or Block, Reg., Number of Acres of Land, No. School District, Indicate Homestead, Indicate Agricultural, Indicate Type of Property, TRUER AND FULL VALUATIONS (LAND, BUILDINGS, MACHINERY, TOTAL TRUG AND FULL VALUE), ASSESSED VALUATIONS (RURAL, ALL OTHER, MACHINERY, TOTAL ASSESSED VALUE), Total Assessed Value as Equalized by the Board of Review, FINAL EQUALIZED VALUE.

Cass County, Minnesota, for Taxes for the Year 1959.

Table with columns: SOLD FOR TAXES, VALUATIONS BY SCHOOL DISTRICTS AS EQUALIZED BY DEPARTMENT OF TAXATION (District No., Rate, Mills), Tax Including State Homestead, State Tax on Non-Homestead, SPECIAL TAXES, TOTAL TAXES, PAID, WHEN PAID (Month, Day, Year), Number of Receipt, March Settlement 1960, June Settlement 1960, Penalty, November Settlement 1960, Penalty, Collections to First Monday in January 1961, Delinquent on First Monday in January 1961, Total Delinquent Tax and Penalty, REMARKS.

Vertical text on the left edge of the page, including 'Kavli's Wood Lake Shores' and 'Pines & Pinery on Lake Washburn'.

Vertical text on the right edge of the page, including 'Patterson Roosevelt Lake Addition' and 'Pines & Pinery on Lake Washburn'.





Assessment Roll and Tax List of Real Property in the Town of Crooked Lake

Cass County, Minnesota, for Taxes for the Year 1959.

FORM 30 MILLER-DAVIS CO. MINNEAPOLIS Indicate Type of Property: R-Residential, C-Commercial, I-Industrial, U-Utility, F-Farm, L-Lakeshore, T-Timber, M-Mineral

Table with columns: IN WHOSE NAME ASSESSED, TO WHOM TRANSFERRED, SUBDIVISION, DESCRIPTION OF PROPERTY, TRUE AND FULL VALUATIONS, ASSESSED VALUATIONS, FINAL EQUALIZED VALUE.

Table with columns: SOLD FOR TAXES, VALUATIONS BY SCHOOL DISTRICTS AS EQUALIZED BY DEPARTMENT OF TAXATION, SPECIAL TAXES, TOTAL TAXES, PAID, WHEN PAID, Number of Receipt, March Settlement 1960, June Settlement 1960, November Settlement 1960, Collections to First Monday in January 1961, Delinquent on First Monday in January 1961, Total Delinquent Tax and Penalty, REMARKS.

Vertical text on the left edge of the page, including 'Kavli's Wood Lake Shores' and other property identifiers.

Vertical text on the right edge of the page, including 'Paterson' and other property identifiers.



Assessment Roll and Tax List of Real Property in the Town of Crooked Lake

Cass County, Minnesota, for Taxes for the Year 1959.

Form 30 MILLER-DAVIS CO. MINNEAPOLIS. Indicate Type of Property: R-Residential, C-Commercial, I-Industrial, U-Utility, F-Farm, L-Lakeshore, T-Timber, M-Mineral

Table with columns: IN WHOSE NAME ASSESSED, TO WHOM TRANSFERRED, SUBDIVISION, Sec. of Lot, Town or Block, Reg., Number of Acres of Land, No. School District, Indicate Homestead, Indicate Agricultural, Indicate Type of Property, TRUE AND FULL VALUATIONS (LAND, BUILDINGS, MACHINERY, TOTAL), ASSESSED VALUATIONS (RURAL, ALL OTHER, MACHINERY, TOTAL ASSESSED), FINAL EQUALIZED VALUE.

Vertical text on the left margin: For's list of... Washburn Lake... Pines A Pines on Lake Washburn... Luscher's Bay... Washburn Lake... C. Bogen Company's... Roosevelt Lake Addition

Table with columns: SOLD FOR TAXES, VALUATIONS BY SCHOOL DISTRICTS AS EQUALIZED BY DEPARTMENT OF TAXATION (District No., Rate, etc.), Tax Including State Homestead, State Tax on Non-Homestead, SPECIAL TAXES, TOTAL TAXES, PAID, WHEN PAID, Number of Receipt, March Settlement 1960, June Settlement 1960, November Settlement 1960, Collections to First Monday in January 1961, Delinquent on First Monday in January 1961, Total Delinquent Tax and Penalty, REMARKS.

Vertical text on the right margin: Patterson Lake Shore, O'Brien's plat, Part of Office of... Plat 888... Plat 889... Plat 890... Plat 891... Plat 892... Plat 893... Plat 894... Plat 895... Plat 896... Plat 897... Plat 898... Plat 899... Plat 900... Plat 901... Plat 902... Plat 903... Plat 904... Plat 905... Plat 906... Plat 907... Plat 908... Plat 909... Plat 910... Plat 911... Plat 912... Plat 913... Plat 914... Plat 915... Plat 916... Plat 917... Plat 918... Plat 919... Plat 920... Plat 921... Plat 922... Plat 923... Plat 924... Plat 925... Plat 926... Plat 927... Plat 928... Plat 929... Plat 930... Plat 931... Plat 932... Plat 933... Plat 934... Plat 935... Plat 936... Plat 937... Plat 938... Plat 939... Plat 940... Plat 941... Plat 942... Plat 943... Plat 944... Plat 945... Plat 946... Plat 947... Plat 948... Plat 949... Plat 950... Plat 951... Plat 952... Plat 953... Plat 954... Plat 955... Plat 956... Plat 957... Plat 958... Plat 959... Plat 960... Plat 961... Plat 962... Plat 963... Plat 964... Plat 965... Plat 966... Plat 967... Plat 968... Plat 969... Plat 970... Plat 971... Plat 972... Plat 973... Plat 974... Plat 975... Plat 976... Plat 977... Plat 978... Plat 979... Plat 980... Plat 981... Plat 982... Plat 983... Plat 984... Plat 985... Plat 986... Plat 987... Plat 988... Plat 989... Plat 990... Plat 991... Plat 992... Plat 993... Plat 994... Plat 995... Plat 996... Plat 997... Plat 998... Plat 999... Plat 1000



Assessment Roll and Tax List of Real Property in the Town of Carleton Lake

Cass County, Minnesota, for Taxes for the Year 1959.

Form 27 MILLER-DAVIS CO., MINNEAPOLIS. Indicate Type of Property: R-Residential, C-Commercial, I-Industrial, U-Utility, F-Farm, L-Lakeshore, T-Timber, M-Mineral

Table with columns: IN WHOSE NAME ASSESSED, TO WHOM TRANSFERRED, SUBDIVISION, TRUE AND FULL VALUATIONS, ASSESSED VALUATIONS, VALUATIONS BY SCHOOL DISTRICTS AS EQUALIZED BY DEPARTMENT OF TAXATION, SOLD FOR TAXES, SPECIAL TAXES, TOTAL TAXES, PAID, WHEN PAID, Number of Receipt, March Settlement 1960, June Settlement 1960, Penalty, November Settlement 1960, Penalty, Collections to Fire Monday in January 1961, Penalty, Delinquent on First Monday in January 1961, Total Delinquent Tax and Penalty, REMARKS.

Vertical text on the left margin: Wood Lake, Patterson Lake Shore, Rees Anchorage, etc.

Vertical text on the right margin: Patterson Lake Shore, Rees Anchorage, etc.







Assessment Roll and Tax List of Real Property in the Town of Crooked Lake

\* Indicate Type of Property: R-Residential, C-Commercial, I-Industrial, U-Utility, F-Farm, L-Lakeshore, T-Timber, M-Mineral

Cass County, Minnesota, for Taxes for the Year 1959.

Table with columns: IN WHOSE NAME ASSESSED, TO WHOM TRANSFERRED, SUBDIVISION, TRUE AND FULL VALUATIONS, ASSESSED VALUATIONS, VALUATIONS BY SCHOOL DISTRICTS AS EQUALIZED BY DEPARTMENT OF TAXATION, TAXES, PAID, WHEN PAID, Number of Receipt, March Settlement 1960, June Settlement 1960, November Settlement 1960, Collections to First Monday in January 1961, Delinquent on First Monday in January 1961, Total Delinquent Tax and Penalty, REMARKS.

Vertical text on the left margin: O'Brien's Plat, Sweeney's Plat, etc.

Vertical text on the right margin: Rees Anchorage, 1st Add'n to Roosevelt Sablin's Eastburn Add'n



Assessment Roll and Tax List of Real Property in the Town of Crooked Lake

Form 50 - MILLER-DAVIS CO., MINNEAPOLIS

Indicate Type of Property: R-Residential, C-Commercial, I-Industrial, U-Utility, F-Farm, L-Lakeshore, T-Timber, M-Mineral

Patterson's Lake Shore  
Rees Anchorage  
1st Add'n to Roosevelt Sablin's Pasture Add'n

Table with columns: IN WHOSE NAME ASSESSED, TO WHOM TRANSFERRED, SUBDIVISION, Sec. or Lot, Town or Block, Reg., Number of Acres of Land, DESCRIPTION OF PROPERTY, TRUE AND FULL VALUATIONS, ASSESSED VALUATIONS (RURAL, ALL OTHER, MACHINERY), Total Assessed Value, Final Equalized Value.

Cass County, Minnesota, for Taxes for the Year 1959

Table with columns: SOLD FOR TAXES, VALUATIONS BY SCHOOL DISTRICTS AS EQUALIZED BY DEPARTMENT OF TAXATION, Tax Including State Homestead, State Tax on Non-Homestead, SPECIAL TAXES, TOTAL TAXES, PAID, WHEN PAID, Number of Receipt, March Settlement, June Settlement, Penalty, November Settlement, Collections to First Monday in January 1961, Delinquent on First Monday in January 1961, Total Delinquent Tax and Penalty, REMARKS.

Assessment Roll and Tax List of Real Property in the Town of Crooked Lake

Cass County, Minnesota, for Taxes for the Year 1959.

Form 30 - MILLER-DAY & CO., MINNEAPOLIS \* Indicate Type of Property: R-Residential, C-Commercial, I-Industrial, U-Utility, F-Farm, L-Lakeshore, T-Timber, M-Mineral

Table with columns: IN WHOSE NAME ASSESSED, TO WHOM TRANSFERRED, DESCRIPTION OF PROPERTY, TRUE AND FULL VALUATIONS, ASSESSED VALUATIONS, and FINAL EQUALIZED VALUE. Includes handwritten entry for G. J. Rees.

Table with columns: VALUATIONS BY SCHOOL DISTRICTS AS EQUALIZED BY DEPARTMENT OF TAXATION, TAXES, PAID, WHEN PAID, and REMARKS. Includes handwritten entries for tax amounts and payment dates.

Vertical text on the left margin: Wash, Lusher's Bay, Swokey Hollow Add'n, etc.

Vertical text on the right margin: Add'n to Roosevelt Sub'n's Eastburn Add'n







Assessment Roll and Tax List of Real Property in the Town of Crooked Lake

Cass County, Minnesota, for Taxes for the Year 1959.

Form 30 - MILLER-DAVIS CO., MINNEAPOLIS. Indicate Type of Property: R-Residential, C-Commercial, I-Industrial, U-Utility, F-Farm, L-Lakeshore, T-Timber, M-Mineral

Table with columns: IN WHOSE NAME ASSESSED, TO WHOM TRANSFERRED, SUBDIVISION, DESCRIPTION OF PROPERTY, TRUE AND FULL VALUATIONS, ASSESSED VALUATIONS, VALUATIONS BY SCHOOL DISTRICTS AS EQUALIZED BY DEPARTMENT OF TAXATION, SOLD FOR TAXES, PAID, WHEN PAID, SPECIAL TAXES, TOTAL TAXES, and REMARKS. Includes handwritten entries for Sabin's Eastburn Addition and various tax payment records.

Patterson's Lake Shore

Bees Anchorage

1st Addition to Eastburn Add'n

Sabin's Eastburn Add'n

Personal

Assessment Roll and Tax List of Real Property in the Town of Crooked Lake

Cass County, Minnesota, for Taxes for the Year 1959.

Indicate Type of Property: R-Residential, C-Commercial, I-Industrial, U-Utility, F-Farm, L-Lakeshore, T-Timber, M-Mineral

Patterson's Lake Shore  
Rees Anchorage  
1st Addition to  
Sabin's Eastburn Add'n

Table with columns: IN WHOSE NAME ASSESSED, TO WHOM TRANSFERRED, SUBDIVISION, DESCRIPTION OF PROPERTY, TRUE AND FULL VALUATIONS, ASSESSED VALUATIONS, VALUATIONS BY SCHOOL DISTRICTS AS EQUALIZED BY DEPARTMENT OF TAXATION, TAXES, PAID, WHEN PAID, Number of Receipt, March Settlement 1960, June Settlement 1960, Penalty, November Settlement 1960, Penalty, Collections to First Monday in January 1961, Penalty, Delinquent on First Monday in January 1961, Total Delinquent Tax and Penalty, REMARKS.

Leo + Hedwig A. Schlemmer  
Ralph and Evelyn Sabin  
Gilbert R. + Lois C. Sabin  
Gilbert R. + Lois C. Sabin  
Adriech + Ruth E. Sabin  
Gilbert R. + Lois C. Sabin  
William J. + Elvora C. Murphy  
Gilbert R. + Lois C. Sabin

SABIN'S EASTBURN ADDITION  
21  
22  
23  
24  
25  
26  
27  
28  
29  
30  
31  
32  
33  
34  
35  
36  
37  
38  
39  
40

Table with columns: No. School District, Indicate Homestead, Indicate Agricultural, Indicate Type of Property, LAND Exclusive of Structures and Improvements, BUILDINGS and Other Structures, MACHINERY Permanently Attached to Real Estate, TOTAL True and Full Value, RURAL (Homestead, Over \$4,000 and Non-Homestead, Timber Land Class, ALL OTHER (Homestead, Over \$4,000 and Non-Homestead, MACHINERY Permanently Attached to Real Estate), TOTAL ASSESSED VALUE, Total Assessed Value as Equalized by the Board of Review, FINAL EQUALIZED VALUE.

Table with columns: SOLD FOR TAXES, District No., District No., District No., District No., District No., District No., Tax Including State Homestead, State Tax on Non-Homestead, SPECIAL TAXES, TOTAL TAXES, PAID, WHEN PAID, Number of Receipt, March Settlement 1960, June Settlement 1960, Penalty, November Settlement 1960, Penalty, Collections to First Monday in January 1961, Penalty, Delinquent on First Monday in January 1961, Total Delinquent Tax and Penalty, REMARKS.



