

Assessment & Tax List - 1958
Crooked Lake

SUMMARY OF TAX COLLECTION

| | | | | | |
|---------------|---|---|---|---|--------------|
| Original Levy | - | - | - | - | \$ 16,673.82 |
| Additions | - | - | - | - | \$ 69.96 |
| Abatements | - | - | - | - | \$ 16,743.78 |
| | | | | | \$ 114.68 |
| | | | | | \$ 16,629.10 |

COLLECTIONS

| | | | | | |
|---------------------|---|---|---|---|--------------|
| March Settlement | - | - | - | - | \$ 1,950.46 |
| June Settlement | - | - | - | - | \$ 10,839.37 |
| November Settlement | - | - | - | - | \$ 2,569.83 |
| January Settlement | - | - | - | - | \$ 56.96 |
| | | | | | \$ 15,416.62 |
| Over Collected | - | - | - | - | \$ 6.30 |
| Under Collected | - | - | - | - | \$ |
| Delinquent | - | - | - | - | \$ 12,187.8 |
| | | | | | \$ 1212.48 |
| Total | - | - | - | - | \$ 16,629.10 |

Real Estate

Auditor's Plat of Lake Washburn Outlots

Tringale Bros. & Co. Real Estate Brokers
Roosevelt Trails

Assessment Roll and Tax List of Real Property in the Town of Crooked Lake, County of Cass, Minnesota

Indicate Type of Property: R-Residential, C-Commercial, I-Industrial, U-Utility, F-Farm, L-Lakeshore, T-Timber, M-Mineral

Cass County, Minnesota, for Taxes for the Year 1958.

| IN WHOSE NAME ASSESSED | TO WHOM TRANSFERRED | DESCRIPTION OF PROPERTY | | | | No. School District | Indicate Homestead Yes or No | Indicate Agricultural Yes or No | Indicate Type of Property | TRUE AND FULL VALUATIONS | | | | ASSESSED VALUATIONS | | | | | FINAL EQUALIZED VALUE | | | |
|-------------------------------|---------------------|--|-------------|---------------|------|---------------------|------------------------------|---------------------------------|---------------------------|--------------------------|---|--------------------------------|---|---------------------------|-------|--------|-----------------------------|--|-----------------------|----------------------|--|--------------------------|
| | | SUBDIVISION | Sec. or Lot | Town or Block | Rng. | | | | | Number of Acres of Land | LAND EXCLUSIVE OF STRUCTURES AND IMPROVEMENTS | BUILDINGS AND OTHER STRUCTURES | MACHINERY PERMANENTLY ATTACHED TO REAL ESTATE | TOTAL True and Full Value | RURAL | | ALL OTHER | | | TOTAL ASSESSED VALUE | Total Assessed Value as Equalized by the Board of Review | |
| | | | | | | | | | | | | | | | Acres | 100ths | Homestead Up to \$4,000 20% | Over \$4,000 and Non-Homestead 33 1/3% | | | | Timber Land Class 3c 20% |
| Lars Schultzy + Lars Schultzy | | NE 1/4 of NE 1/4 less hwy | 10 | R39 | 26 | 40 | | R | 250 | 480 | | 730 | 146 | | | | 146 | | | | | |
| State of Minnesota | | NW 1/4 of NE 1/4 | | | | 40 | | T | 120 | | | 120 | | 40 | | | 40 | | | | | |
| Gilbert R. & Lois B. Sabin | | SW 1/4 of NE 1/4 | | | | 40 | | | | | | | | | | | | | | | | |
| G. R. & Lois Clare Sabin | | SE 1/4 of NE 1/4 less 1520' of hwy #6 + less hwy | | | | 40 | | R | 200 | 1925 | | 2025 | 405 | | | | 405 | | | | | |
| Ingelborg Nystrom | | 1520' of SW 1/4 of NE 1/4 lying on hwy #6 | | | | 40 | | R | 60 | 250 | | 310 | 62 | | | | 62 | | | | | |
| State of Minnesota | | NE 1/4 of NW 1/4 | | | | 40 | | | | | | | | | | | | | | | | |
| Gilbert R. Sabin | | NW 1/4 of NW 1/4 | | | | 40 | | T | 201 | | | 201 | | 67 | | | 67 | | | | | |
| Gilbert R. & Lois B. Sabin | | SW 1/4 of NW 1/4 | | | | 40 | | T | 159 | | | 159 | | 53 | | | 53 | | | | | |
| | | SE 1/4 of NW 1/4 | | | | 40 | | | | | | | | | | | | | | | | |
| State of Minnesota | | NE 1/4 of SW 1/4 | | | | 40 | | T | 159 | | | 159 | | 53 | | | 53 | | | | | |
| Gilbert R. & Lois B. Sabin | | NW 1/4 of SW 1/4 | | | | 40 | | T | 159 | | | 159 | | 53 | | | 53 | | | | | |
| State of Minnesota | | SW 1/4 of SW 1/4 | | | | 40 | | T | 159 | | | 159 | | 53 | | | 53 | | | | | |
| State of Minnesota | | SE 1/4 of SW 1/4 | | | | 40 | | | | | | | | | | | | | | | | |
| G. Harold Todd | | NE 1/4 of SE 1/4 less hwy | | | | 40 | | | 159 | | | 159 | | | | | | | | | | |
| State of Minnesota | | NW 1/4 of SE 1/4 | | | | 40 | | | | | | | | | | | | | | | | |
| State of Minnesota | | SW 1/4 of SE 1/4 | | | | 40 | | | | | | | | | | | | | | | | |
| State of Minnesota | | SE 1/4 of SE 1/4 less hwy | | | | 40 | | | | | | | | | | | | | | | | |
| | | | | | | 320 | | | 1308 | 2555 | | 3863 | 613 | 206 | | | 219 | | | | | |

And Assessment Omitted Property

| SOLD FOR TAXES | VALUATIONS BY SCHOOL DISTRICTS AS EQUALIZED BY DEPARTMENT OF TAXATION | | | | | | Tax Including State Homestead | State Tax on Non-Homestead | SPECIAL TAXES | TOTAL TAXES | PAID | WHEN PAID | Number of Receipt | March Settlement 1959 | June Settlement 1959 | Penalty | November Settlement 1959 | Penalty | Collections to First Monday in January 1960 | Penalty | Delinquent on First Monday in January 1960 | Total Delinquent Tax and Penalty | REMARKS |
|----------------|---|--------------|--------------|--------------|--------------|--------------|-------------------------------|----------------------------|---------------|-------------|------|-----------|-------------------|-----------------------|----------------------|---------|--------------------------|---------|---|---------|--|----------------------------------|---------|
| | District No. | District No. | District No. | District No. | District No. | District No. | | | | | | | | | | | | | | | | | |
| | Rate | Rate | Rate | Rate | Rate | Rate | | | | | | | | | | | | | | | | | |
| 1 | | | | | | | | | | | | | | | | | | | | | | | |
| 2 | | | | | | | | | | | | | | | | | | | | | | | |
| 3 | | | | | | | | | | | | | | | | | | | | | | | |
| 4 | | | | | | | | | | | | | | | | | | | | | | | |
| 5 | | | | | | | | | | | | | | | | | | | | | | | |
| 6 | | | | | | | | | | | | | | | | | | | | | | | |
| 7 | | | | | | | | | | | | | | | | | | | | | | | |
| 8 | | | | | | | | | | | | | | | | | | | | | | | |
| 9 | | | | | | | | | | | | | | | | | | | | | | | |
| 10 | | | | | | | | | | | | | | | | | | | | | | | |
| 11 | | | | | | | | | | | | | | | | | | | | | | | |
| 12 | | | | | | | | | | | | | | | | | | | | | | | |
| 13 | | | | | | | | | | | | | | | | | | | | | | | |
| 14 | | | | | | | | | | | | | | | | | | | | | | | |
| 15 | | | | | | | | | | | | | | | | | | | | | | | |
| 16 | | | | | | | | | | | | | | | | | | | | | | | |
| 17 | | | | | | | | | | | | | | | | | | | | | | | |
| 18 | | | | | | | | | | | | | | | | | | | | | | | |
| 19 | | | | | | | | | | | | | | | | | | | | | | | |
| 20 | | | | | | | | | | | | | | | | | | | | | | | |

Auditor's Plat of Lake Washburn Outlets
Tingdale Bros. aka Flight's ROOSEVELT TRAILS

Assessment Roll and Tax List of Real Property in the Town of Crooked Lake

Cass County, Minnesota, for Taxes for the Year 1958.

Indicate Type of Property: R-Residential, C-Commercial, I-Industrial, U-Utility, F-Farm, L-Lakeshore, T-Timber, M-Mineral

Main table with columns: IN WHOSE NAME ASSESSED, TO WHOM TRANSFERRED, DESCRIPTION OF PROPERTY, TRUE AND FULL VALUATIONS, ASSESSED VALUATIONS, VALUATIONS BY SCHOOL DISTRICTS AS EQUALIZED BY DEPARTMENT OF TAXATION, PAID, WHEN PAID, etc.

Sec #17 Continued on next page

Andtor's Plat of Lake Washburn Outlets, Tingle Bros. aka Rejgnt, ROOSEVELT TRAIL, ROOSEVELT TRAIL

Assessment Roll and Tax List of Real Property in the Down of Lacook Lake

Indicate Type of Property: R-Residential, C-Commercial, I-Industrial, U-Utility, F-Farm, L-Lakeshore, T-Timber, M-Mineral

Table with columns: IN WHOSE NAME ASSESSED, TO WHOM TRANSFERRED, DESCRIPTION OF PROPERTY, TRUE AND FULL VALUATIONS, ASSESSED VALUATIONS, FINAL EQUALIZED VALUE. Includes entries for Moneta Improvement Co. and Leon Hipple.

Cass County, Minnesota, for Taxes for the Year 1958.

Table with columns: SOLD FOR TAXES, VALUATIONS BY SCHOOL DISTRICTS AS EQUALIZED BY DEPARTMENT OF TAXATION, Tax including State Homestead, SPECIAL TAXES, TOTAL TAXES, PAID, WHEN PAID, Number of Receipt, March Settlement, June Settlement, November Settlement, Penalty, Collections to First Monday in January 1960, Delinquent on First Monday in January 1960, Total Delinquent Tax and Penalty, REMARKS. Includes tax payment details for various lots.

Auditor's Plat of Lake Washburn Outlots
Cass County, Minnesota
Tingdelle Bros. & Edgits
ROOSEVELT TRAILS

Assessment Roll and Tax List of Real Property in the Town of Crooked Lake

Cass County, Minnesota, for Taxes for the Year 1958.

Indicate Type of Property: R-Residential, C-Commercial, I-Industrial, U-Utility, F-Farm, L-Lakeshore, T-Timber, M-Mineral

Main table with columns: IN WHOSE NAME ASSESSED, TO WHOM TRANSFERRED, DESCRIPTION OF PROPERTY, TRUE AND FULL VALUATIONS, ASSESSED VALUATIONS, VALUATIONS BY SCHOOL DISTRICTS AS EQUALIZED BY DEPARTMENT OF TAXATION, TAXES, PAID, WHEN PAID, Number of Receipt, March Settlement 1959, June Settlement 1959, November Settlement 1959, Collections to First Monday in January 1960, Delinquent on First Monday in January 1960, Total Delinquent Tax and Penalty, REMARKS.

Handwritten names and addresses: Walter M & Althea H. Jaeh, Hans & Helen Brenna, Eva Kundahl Kohler & Joseph S. Kohler, Eldred L & Florence M. Gater, Eldon N. & Flossie Nelson, George W. & Hazel B. Olson, Lawrence & Lauretta Rogers, Louis S. & Pearl M. Sandtrick, Minnie S. Falk, Williams & Delia M. Smith.

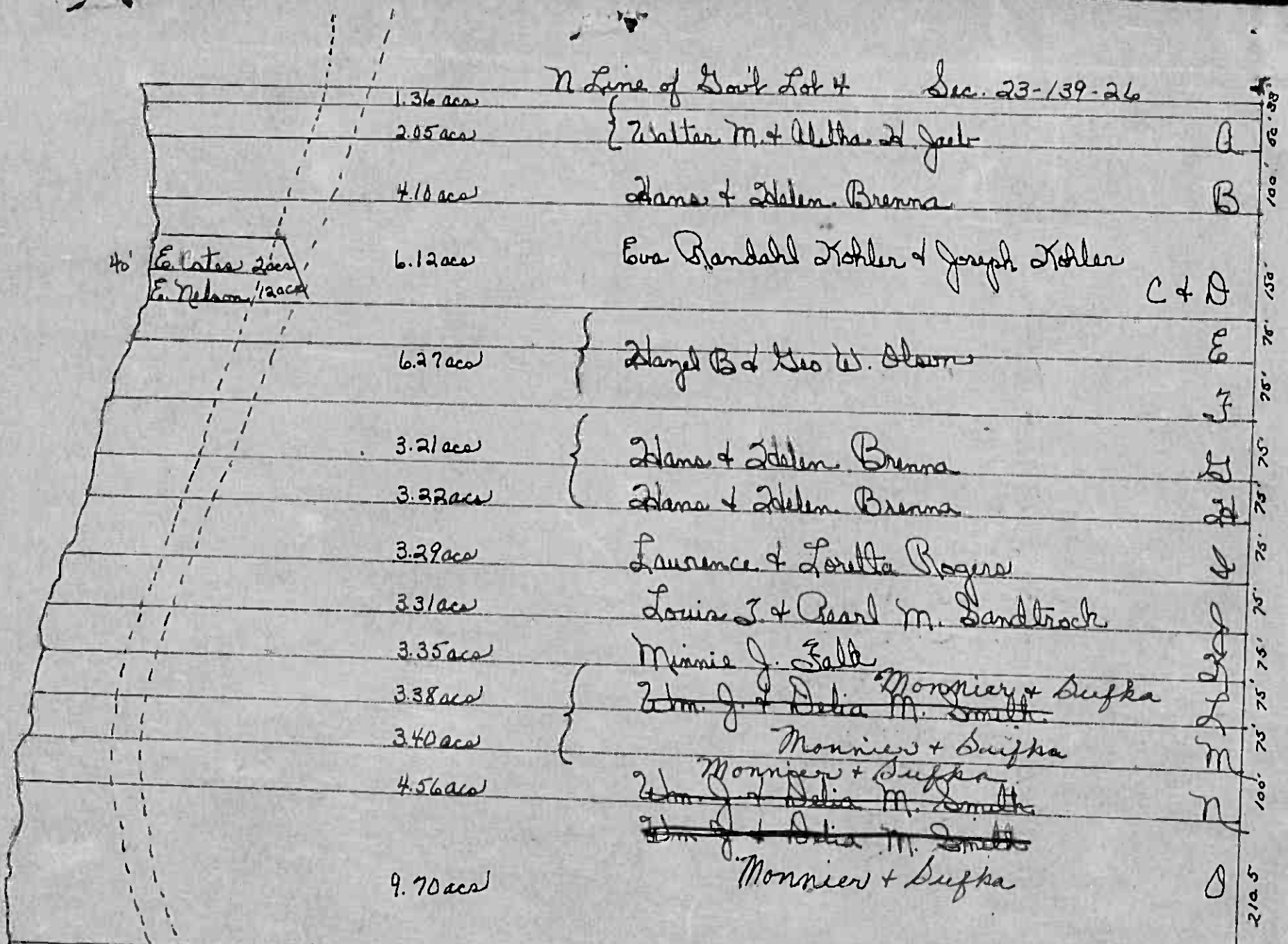
Rec. where S.W. corner of 1.00' of N. 333' of Lot 4 intersects a line of 100' between 1/2 Sec. 10 & 11, T. 20 N., R. 20 W. to be taken, thence along said line to beginning.

Summary row: 5834, 263, 3399, 4061, 475, 142, 1087

Summary row: 7475, 562, 1037, 22684, 364, 24043, 12728, 6270

Auditor's Plat of Lake Washburn Outlets, Roseville Trails, Tingle Lake, Lake Heights, Roseville 500

N Line of Govt Lot 4 Sec. 23-139-26



40' E. Peter 2 acs
E. Nelson 1/2 acs

S. Line of Govt Lot 4

100' 75' 75' 75' 75' 75' 75' 75' 75' 75' 100' 210.5'

Assessment Roll and Tax List of Real Property in the Town of Crooked Lake

Cass County, Minnesota, for Taxes for the Year 1958.

Form 300 (Revised 1-1-58) Minnesota Department of Taxation. * Indicate Type of Property: R-Residential, C-Commercial, I-Industrial, U-Utility, F-Farm, L-Lakeshore, T-Timber, M-Mineral

Table with columns: IN WHOSE NAME ASSESSED, TO WHOM TRANSFERRED, DESCRIPTION OF PROPERTY, TRUE AND FULL VALUATIONS, ASSESSED VALUATIONS, VALUATIONS BY SCHOOL DISTRICTS AS EQUALIZED BY DEPARTMENT OF TAXATION, TAXES, PAID, WHEN PAID, Number of Receipt, March Settlement 1959, June Settlement 1959, Penalty, November Settlement 1959, Penalty, Collections to First Monday in January 1960, Penalty, Delinquent on First Monday in January 1960, Total Delinquent Tax and Penalty, REMARKS.

State of Minnesota
Wm. D. & Pearl L. Stiles
Julian J. & Odelle Corinne Barber
Raymond & Emma Adams
Emma Guyatt Hughes
Floyd L. & Helma M. Simmons
George & Mabel Williams

Androp's Plat of Land
Washington Outlots
Ingleto Bros.
Roosevelt Tracts
Late Rights
ROOSEVELT BOO

Assessment Roll and Tax List of Real Property in the Town of Crooked Lake, Cass County, Minnesota, for Taxes for the Year 1958.

Cass County, Minnesota, for Taxes for the Year 1958.

Table with columns: IN WHOSE NAME ASSESSED, TO WHOM TRANSFERRED, DESCRIPTION OF PROPERTY, TRUE AND FULL VALUATIONS, ASSESSED VALUATIONS, VALUATIONS BY SCHOOL DISTRICTS AS EQUALIZED BY DEPARTMENT OF TAXATION, TAXES, PAID, WHEN PAID, etc.

[See 27, continued, next page]

Real Estate

Auditor's Plat of Lake Washburn Outlots, Tingdale Bros. Roosevelt Trails, Lake Heights BOONVILLE 800

Assessment Roll and Tax List of Real Property in the Town of Crooked Lake

Cass County, Minnesota, for Taxes for the Year 1958.

Form SCD 1-1-58

Indicate Type of Property: R-Residential, C-Commercial, I-Industrial, U-Utility, F-Farm, L-Lakeshore, T-Timber, M-Mineral

Main table with columns: IN WHOSE NAME ASSESSED, TO WHOM TRANSFERRED, DESCRIPTION OF PROPERTY, TRUE AND FULL VALUATIONS, ASSESSED VALUATIONS, VALUATIONS BY SCHOOL DISTRICTS AS EQUALIZED BY DEPARTMENT OF TAXATION, SOLD FOR TAXES, SPECIAL TAXES, TOTAL TAXES, PAID, WHEN PAID, Number of Receipt, March Settlement 1959, June Settlement 1959, November Settlement 1959, Penalty, Collections to First Monday in January 1960, Delinquent on First Monday in January 1960, Total Delinquent Tax and Penalty, REMARKS.

Moneta Improvement Co

A. La. Savlis

Alfred L. Olson

Anna Winsor

Emil & Martha M. Berg

Carl Arthur & Oliver John Olson

George & Hazel Heid

Vertical text on the right edge: Auditor's Plat of Lake Washburn Outlots, Township of Crooked Lake, Cass County, Minnesota, 1958, Lake Heights, 200 West 1st St., Rossvale, Pa.

Assessment Roll and Tax List of Real Property in the Town of Greenwood Lake, Minnesota

Indicate Type of Property: R-Residential, C-Commercial, I-Industrial, U-Utility, F-Farm, L-Lakeshore, T-Timber, M-Mineral

Table with columns: IN WHOSE NAME ASSESSED, TO WHOM TRANSFERRED, DESCRIPTION OF PROPERTY, TRUE AND FULL VALUATIONS, ASSESSED VALUATIONS, FINAL EQUALIZED VALUE. Includes handwritten entries for Mae McKenneth D. Angue and L.D. Williams.

Cass County, Minnesota, for Taxes for the Year 1958.

Table with columns: SOLD FOR TAXES, VALUATIONS BY SCHOOL DISTRICTS AS EQUALIZED BY DEPARTMENT OF TAXATION, Tax Including State Homestead, State Tax on Non-Homestead, SPECIAL TAXES, TOTAL TAXES, PAID, WHEN PAID, Number of Receipt, March Settlement 1959, June Settlement 1959, November Settlement 1959, Collections to First Monday in January 1960, Delinquent on First Monday in January 1960, Total Delinquent Tax and Penalty, REMARKS. Includes handwritten entries for Mae McKenneth D. Angue and L.D. Williams.

Vertical text on the right edge of the page, including 'Auditor's Plat of Lake Washburn Outlots' and 'Roosevelt Falls'.

71776
71775
51116
71924
261

62824



G. Lohse 26489

165061

297.2'

Smokay Hollow Lake

Plot Set 2
35-129-26



264 26489

Assessment Roll and Tax List of Real Property in the Town of Crooked Lake

Cass County, Minnesota, for Taxes for the Year 1958.

Form 300 Indicate Type of Property: R-Residential, C-Commercial, I-Industrial, U-Utility, F-Farm, L-Lakeshore, T-Timber, M-Mineral

Table with columns: IN WHOSE NAME ASSESSED, TO WHOM TRANSFERRED, SUBDIVISION, DESCRIPTION OF PROPERTY, TRUE AND FULL VALUATIONS, ASSESSED VALUATIONS, and FINAL EQUALIZED VALUE.

Table with columns: VALUATIONS BY SCHOOL DISTRICTS AS EQUALIZED BY DEPARTMENT OF TALLATION, TAXES, PAID, WHEN PAID, and REMARKS.

Vertical text on the right edge: Auditor's Plat of Lake Washington, Outlots, Roosevelt Lake Heights, ROOSEVELT BROS. TRINGLE BROS., ROOSEVELT TRAILS

Assessment Roll and Tax List of Real Property in the Town of *Wooded Lake*

Cass County, Minnesota, for Taxes for the Year 1958.

Form 80-... Indicate Type of Property: R-Residential, C-Commercial, I-Industrial, U-Utility, F-Farm, L-Lakeshore, T-Timber, M-Mineral

Table with columns: IN WHOSE NAME ASSESSED, TO WHOM TRANSFERRED, DESCRIPTION OF PROPERTY, TRUE AND FULL VALUATIONS, ASSESSED VALUATIONS, FINAL EQUALIZED VALUE. Includes handwritten entries for Jannie A. Bechtol, Martin & Martha Roming, Louis and Busch Peterson, etc.

Table with columns: SOLD FOR TAXES, VALUATIONS BY SCHOOL DISTRICTS AS EQUALIZED BY DEPARTMENT OF TAXATION, Tax including State Homestead, State Tax on Non-Homestead, SPECIAL TAXES, TOTAL TAXES, PAID, WHEN PAID, Number of Receipt, March Settlement 1959, June Settlement 1959, Penalty, November Settlement 1959, Penalty, Collections to First Monday in January 1960, Penalty, Delinquent on First Monday in January 1960, Total Delinquent Tax and Penalty, REMARKS. Includes handwritten entries for tax amounts and payment dates.

Real Estate

Real Estate

Vertical text on the right edge: Auditor's Plat of Lake Washburn Outlets, Rosevelt Lake Heights, The Eagle Bros., Rosevelt Trails, ROOSEVELT 500

Assessment Roll and Tax List of Real Property in the Town of Crooked Lake

Cass County, Minnesota, for Taxes for the Year 1958.

Auditor's Plat of Lake Washburn Outlots

Table with columns: IN WHOSE NAME ASSESSED, TO WHOM TRANSFERRED, DESCRIPTION OF PROPERTY, TRUE AND FULL VALUATIONS, ASSESSED VALUATIONS, VALUATIONS BY SCHOOL DISTRICTS AS EQUALIZED BY DEPARTMENT OF TAXATION, SOLD FOR TAXES, PAID, WHEN PAID, March Settlement 1959, June Settlement 1959, Penalty, November Settlement 1959, Penalty, Collections to First Monday in January 1960, Delinquent on First Monday in January 1960, Total Delinquent Tax and Penalty, REMARKS.

Vertical text on the right edge of the page, including 'Auditor's Plat of Lake Washburn Outlots' and 'Cass County, Minnesota'.

Assessment Roll and Tax List of Real Property in the Town of Good Lake, Minnesota

Cass County, Minnesota, for Taxes for the Year 1958.

Form 50 - Indicate Type of Property: R-Residential, C-Commercial, I-Industrial, U-Utility, F-Farm, L-Lakeshore, T-Timber, M-Mineral

Table with columns: IN WHOSE NAME ASSESSED, TO WHOM TRANSFERRED, SUBDIVISION, DESCRIPTION OF PROPERTY, TRUE AND FULL VALUATIONS, ASSESSED VALUATIONS, VALUATIONS BY SCHOOL DISTRICTS AS EQUALIZED BY DEPARTMENT OF TAXATION, TAXES, PAID, WHEN PAID, etc.

Vertical text on the left margin: Kingdale Bros. Washburn Outlots, Roosevelt Trails

Vertical text on the right margin: Good Lake, Washburn Outlots, Orana Heights, ROOSEVELT 500

Assessment Roll and Tax List of Real Property in the Town of Goodhue Lake

Cass County, Minnesota, for Taxes for the Year 1958.

Form 50 - Indicate Type of Property: R-Residential, C-Commercial, I-Industrial, U-Utility, F-Farm, L-Lakeshore, T-Timber, M-Mineral

Vertical text on the left margin: Auctors' Plat of Lake Washburn Outlots, Roosevelt Trails, Washburn Outlots, P. Washburn, Olato, Orana Heights, Roosevelt Lake Heights, ROOSEVELT 500

Table with columns: IN WHOSE NAME ASSESSED, TO WHOM TRANSFERRED, SUBDIVISION, TRUE AND FULL VALUATIONS (LAND, BUILDINGS, MACHINERY, TOTAL), ASSESSED VALUATIONS (RURAL, ALL OTHER, MACHINERY, TOTAL ASSESSED), FINAL EQUALIZED VALUE.

Table with columns: SOLD FOR TAXES, VALUATIONS BY SCHOOL DISTRICTS AS EQUALIZED BY DEPARTMENT OF TAXATION, Tax Including State Homestead, State Tax on Non-Homestead, SPECIAL TAXES, TOTAL TAXES, PAID, WHEN PAID, Number of Receipt, March Settlement 1959, June Settlement 1959, November Settlement 1959, Collections to First Monday in January 1960, Delinquent on First Monday in January 1960, Total Delinquent Tax and Penalty, REMARKS.

Vertical text on the right margin: Washburn Outlots, P. Washburn, Olato, Orana Heights, Roosevelt Lake Heights, ROOSEVELT 500

Assessment Roll and Tax List of Real Property in the Town of Crooked Lake

Cass County, Minnesota, for Taxes for the Year 1958.

Form 30 - Indicate Type of Property: R-Residential, C-Commercial, I-Industrial, U-Utility, F-Farm, L-Lakeshore, T-Timber, M-Mineral

Table with columns: IN WHOSE NAME ASSESSED, TO WHOM TRANSFERRED, SUBDIVISION, Sec. of Lot, Town or Block, Reg., Number of Acres of Land, TRUE AND FULL VALUATIONS (LAND, BUILDING, MACHINERY, TOTAL), ASSESSED VALUATIONS (RURAL, ALL OTHER, MACHINERY, TOTAL ASSESSED VALUE), FINAL EQUALIZED VALUE.

Table with columns: SOLD FOR TAXES, VALUATIONS BY SCHOOL DISTRICTS AS EQUALIZED BY DEPARTMENT OF TALLATION (District No., Rate, etc.), Tax Including State Homestead, State Tax on Non-Homestead, SPECIAL TAXES, TOTAL TAXES, PAID, WHEN PAID, Number of Receipt, March Settlement 1959, June Settlement 1959, Penalty, November Settlement 1959, Collections to First Monday in January 1960, Delinquent on First Monday in January 1960, Total Delinquent Tax and Penalty, REMARKS.

Vertical text on the left edge: Auditor's Plat of Lots, Ashburn Outlots, Ringdale Bros., Ringdale Trails, Roosevelt Trails.

Vertical text on the right edge: Ringdale Bros., Ringdale Trails, Roosevelt Trails, Roosevelt Lake Heights, Roosevelt 500.

Assessment Roll and Tax List of Real Property in the Town of Prooked Lake

Indicate Type of Property: R-Residential, C-Commercial, I-Industrial, U-Utility, F-Farm, L-Lakeshore, T-Timber, M-Mineral

| IN WHOSE NAME ASSESSED | TO WHOM TRANSFERRED | DESCRIPTION OF PROPERTY | | | | TRUE AND FULL VALUATIONS | | | | | | | | | | FINAL EQUALIZED VALUE | | | |
|------------------------|--|-------------------------|-------------|---------------|-------------------------|---|--------------------------------|---|---------------------------|-----------------------------|--|--------------------------|-----------------------------|------------------------------------|---------|-----------------------|---|----------------------|--|
| | | SUBDIVISION | Sec. or Lot | Town or Block | Number of Acres of Land | LAND Exclusive of Structures and Improvements | BUILDINGS and Other Structures | MACHINERY Permanently Attached to Real Estate | TOTAL True and Full Value | RURAL | | | ALL OTHER | | | | MACHINERY Permanently Attached to Real Estate | TOTAL ASSESSED VALUE | Total Assessed Value as Equalized by the Board of Review |
| | | | | | | | | | | Homestead Up to \$4,000 20% | Over \$4,000 and Non-Homestead 33 1/3% | Timber Land Class 3e 20% | Homestead Up to \$4,000 25% | Over \$4,000 and Non-Homestead 40% | Dollars | | | | |
| | | | | | Acres 100ths | Dollars | Dollars | Dollars | Dollars | Dollars | Dollars | Dollars | Dollars | Dollars | Dollars | Dollars | Dollars | Dollars | |
| | <i>Dingdale Bros. Roosevelt Trails</i> | | | | | | | | | | | | | | | | | | |
| | <i>Reinhardt W. & Raymond J. Bladorn</i> | | 1 | 23 | | 30 | | | 30 | | 10 | | | | 10 | | | | |
| | <i>Harry L. & Hannah M. Blackburn</i> | | 2 | | | 30 | | | 30 | | 10 | | | | 10 | | | | |
| | <i>George R. & Esther L. Koen</i> | | 3 | | | 30 | | | 30 | | 10 | | | | 10 | | | | |
| | <i>Oscar L. Austin</i> | | 4 | | | 30 | | | 30 | | 10 | | | | 10 | | | | |
| | " " | | 5 | | | 30 | | | 30 | | 10 | | | | 10 | | | | |
| | State of Minnesota | | 6 | | | | | | | | | | | | | | | | |
| | State of Minnesota | | 7 | | | | | | | | | | | | | | | | |
| | <i>Jennie L. Arneson</i> | | 8 | | | 30 | | | 30 | | 10 | | | | 10 | | | | |
| | | | 9 | | | | | | | | | | | | | | | | |
| | | | 10 | | | | | | | | | | | | | | | | |
| | | | 11 | | | | | | | | | | | | | | | | |
| | | | 12 | | | | | | | | | | | | | | | | |
| | | | 13 | | | | | | | | | | | | | | | | |
| | | | 14 | | | | | | | | | | | | | | | | |
| | | | 15 | | | | | | | | | | | | | | | | |
| | | | 16 | | | | | | | | | | | | | | | | |
| | | | 17 | | | | | | | | | | | | | | | | |
| | | | 18 | | | | | | | | | | | | | | | | |
| | | | 19 | | | | | | | | | | | | | | | | |
| | | | 20 | | | | | | | | | | | | | | | | |
| | | | | | | 180 | | | 180 | | 60 | | | | 60 | | | | |

Cass County, Minnesota, for Taxes for the Year 1958.

| SOLD FOR TAXES | VALUATIONS BY SCHOOL DISTRICTS AS EQUALIZED BY DEPARTMENT OF TAXATION | | | | | | Tax including State Homestead | State Tax on Non-Homestead | SPECIAL TAXES | TOTAL TAXES | PAID | WHEN PAID | Number of Receipt | March Settlement 1959 | June Settlement 1959 | Penalty | November Settlement 1959 | Penalty | Collections to First Monday in January 1960 | Penalty | Delinquent on First Monday in January 1960 | Total Delinquent Tax and Penalty | REMARKS |
|----------------|---|--------------|--------------|--------------|--------------|--------------|-------------------------------|----------------------------|---------------|-------------|--------------|-------------|-------------------|-----------------------|----------------------|---------|--------------------------|---------|---|---------|--|----------------------------------|---------|
| | District No. | District No. | District No. | District No. | District No. | District No. | | | | | | | | | | | | | | | | | |
| | Rate | Rate | Rate | Rate | Rate | Rate | | | | | | | | | | | | | | | | | |
| | | | | | | | | | | | | | | | | | | | | | | | |
| 1 | | | | | | 10 | 228 | 06 | 234 | 1 | PAID IN FULL | MAY 15 1959 | 8914 | | 234 | | | | | | | 9700 | |
| 2 | | | | | | 10 | 228 | 06 | 234 | 2 | PAID IN FULL | APR 21 1959 | 5508 | | 234 | | | | | | | 7699 | |
| 3 | | | | | | 10 | 228 | 06 | 234 | 3 | PAID IN FULL | MAY 15 1959 | 8913 | | 234 | | | | | | | 7616 | |
| 4 | | | | | | 10 | 228 | 06 | 234 | 4 | PAID IN FULL | MAR 3 1959 | | | | | | | | | | 7662 | |
| 5 | | | | | | 10 | 228 | 06 | 234 | 5 | PAID IN FULL | MAR 30 1959 | 6844 | | 468 | | | | | | | " | |
| 6 | | | | | | | | | | 6 | | | | | | | | | | | | | |
| 7 | | | | | | | | | | 7 | | | | | | | | | | | | | |
| 8 | | | | | | 10 | 228 | 06 | 234 | 8 | | | | | | | | | | | | 234 257 | |
| 9 | | | | | | | | | | 9 | | | | | | | | | | | | 9995 ← 7710 | |
| 10 | | | | | | | | | | 10 | | | | | | | | | | | | | |
| 11 | | | | | | | | | | 11 | | | | | | | | | | | | | |
| 12 | | | | | | | | | | 12 | | | | | | | | | | | | | |
| 13 | | | | | | | | | | 13 | | | | | | | | | | | | | |
| 14 | | | | | | | | | | 14 | | | | | | | | | | | | | |
| 15 | | | | | | | | | | 15 | | | | | | | | | | | | | |
| 16 | | | | | | | | | | 16 | | | | | | | | | | | | | |
| 17 | | | | | | | | | | 17 | | | | | | | | | | | | | |
| 18 | | | | | | | | | | 18 | | | | | | | | | | | | | |
| 19 | | | | | | | | | | 19 | | | | | | | | | | | | | |
| 20 | | | | | | | | | | 20 | | | | | | | | | | | | | |
| | | | | | | | | | | 60 | 1368 | 36 | 1404 | | 1170 | | | | | | | 234 | |

Auditor's Print of Lake Washburn Outlets
Tingdale Bros. Roosevelt Trails

Prook Lake
P.L. Washburn
Roosevelt Lake Heights
ROOSEVELT 500

Form 30 Indicate Type of Property: R-Residential, C-Commercial, I-Industrial, U-Utility, F-Farm, L-Lakeshore, T-Timber, M-Mineral

Table with columns: IN WHOSE NAME ASSESSED, TO WHOM TRANSFERRED, SUBDIVISION, DESCRIPTION OF PROPERTY, TRUE AND FULL VALUATIONS, ASSESSED VALUATIONS, VALUATIONS BY SCHOOL DISTRICTS AS EQUALIZED BY DEPARTMENT OF TAXATION, TAXES, PAID, WHEN PAID, etc.

Vertical text on the left margin: Kingsdale Bros., Roosevelt Tralls, Roosevelt Lake Heights, ROOSEVELT SOO

Vertical text on the right margin: Roosevelt, Washburn Outlots, Washburn Lake, Lawrence Point Lake

Assessment Roll and Tax List of Real Property in the Town of Wooded Lake

Indicate Type of Property: R-Residential, C-Commercial, I-Industrial, U-Utility, F-Farm, L-Lakeshore, T-Timber, M-Mineral

Cass County, Minnesota, for Taxes for the Year 1958.

Table with columns: IN WHOSE NAME ASSESSED, TO WHOM TRANSFERRED, DESCRIPTION OF PROPERTY, TRUE AND FULL VALUATIONS, ASSESSED VALUATIONS, VALUATIONS BY SCHOOL DISTRICTS AS EQUALIZED BY DEPARTMENT OF TAXATION, SOLD FOR TAXES, PAID, WHEN PAID, SPECIAL TAXES, TOTAL TAXES, PAID, WHEN PAID, March Settlement 1959, June Settlement 1959, Penalty, November Settlement 1959, Penalty, Collections to First Monday in January 1960, Penalty, Delinquent on First Monday in January 1960, Total Delinquent Tax and Penalty, REMARKS.

Vertical text on the left edge: Ringdale Bros., Roosevelt Trail, Iowanna Heights, Roosevelt Lake Heights, Roosevelt SOO, Ringdale Bros., Roosevelt Trail, Iowanna Heights, Roosevelt Lake Heights, Roosevelt SOO.

Vertical text on the right edge: Wash. Pines, Sunset Beach on Roosevelt Lake, Plat of Brown's Washburn Lake Addition, PINE LAKE FOREST LAKE, Wash. Pines, Sunset Beach on Roosevelt Lake, Plat of Brown's Washburn Lake Addition, PINE LAKE FOREST LAKE.

Assessment Roll and Tax List of Real Property in the Town of Crooked Lake, Cass County, Minnesota, for Taxes for the Year 1958.

Cass County, Minnesota, for Taxes for the Year 1958.

* Indicate Type of Property: R-Residential, C-Commercial, I-Industrial, U-Utility, F-Farm, L-Lakeshore, T-Timber, M-Mineral

Table with columns: IN WHOSE NAME ASSESSED, TO WHOM TRANSFERRED, SUBDIVISION, TRUE AND FULL VALUATIONS, ASSESSED VALUATIONS, VALUATIONS BY SCHOOL DISTRICTS AS EQUALIZED BY DEPARTMENT OF TAXATION, SOLD FOR TAXES, PAID, WHEN PAID, March Settlement 1959, June Settlement 1959, Penalty, November Settlement 1959, Penalty, Collections to First Monday in January 1960, Penalty, Delinquent on First Monday in January 1960, Total Delinquent Tax and Penalty, REMARKS.

Vertical text on the left margin: Kingsdale Bros., Washburn Outlot, Roosevelt, Aud. P. Lake Wash. Outlot, Addition, Lawrence Point.

Vertical text on the right margin: Washburn Plans, Roosevelt Lake, Plat of Part of Roosevelt Shores, Lawrence Point.

Assessment Roll and Tax List of Real Property in the Town of Crooked Lake, Cass County, Minnesota, for Taxes for the Year 1958.

* Indicate Type of Property: R-Residential, C-Commercial, I-Industrial, U-Utility, F-Farm, L-Lakeshore, T-Timber, M-Mineral

Table with columns: IN WHOSE NAME ASSESSED, TO WHOM TRANSFERRED, SUBDIVISION, TRUE AND FULL VALUATIONS, ASSESSED VALUATIONS, and FINAL EQUALIZED VALUE. Includes handwritten entries for Roy A. Erickson and others.

Cass County, Minnesota, for Taxes for the Year 1958.

Table with columns: SOLD FOR TAXES, VALUATIONS BY SCHOOL DISTRICTS, SPECIAL TAXES, TOTAL TAXES, PAID, WHEN PAID, and various settlement and penalty columns. Includes handwritten entries for tax amounts and dates.

Vertical text on the left edge of the page, including 'Sunset Beach on Roosevelt Lake' and other property descriptions.

Vertical text on the right edge of the page, including 'Plat of Part of Brown's Addition' and other property descriptions.

Assessment Roll and Tax List of Real Property in the Town of Wood Lake

Indicate Type of Property: R-Residential, C-Commercial, I-Industrial, U-Utility, F-Farm, L-Lakeshore, T-Timber, M-Mineral

Table with columns: IN WHOSE NAME ASSESSED, TO WHOM TRANSFERRED, SUBDIVISION, TRUE AND FULL VALUATIONS, ASSESSED VALUATIONS, FINAL EQUALIZED VALUE. Includes handwritten entries for 'A. G. & Mary S. Havli' and 'Carl Arthur Olson & Oliver John Olson'.

Cass County, Minnesota, for Taxes for the Year 1958.

Table with columns: SOLD FOR TAXES, VALUATIONS BY SCHOOL DISTRICTS AS EQUALIZED BY DEPARTMENT OF TAXATION, SPECIAL TAXES, TOTAL TAXES, PAID, WHEN PAID, March Settlement 1959, June Settlement 1959, Penalty, November Settlement 1959, Penalty, Collections to First Monday in January 1960, Penalty, Delinquent on First Monday in January 1960, Total Delinquent Tax and Penalty, REMARKS. Includes handwritten notes like '12088' and 'PAID IN FULL'.

Vertical text on the left edge: Margale Bros., Brown's Magburn Lake, Plot of Forest Beach on Lusher's Bay, etc.

Vertical text on the right edge: Pattergon, A. G. - Hogan Company's, Roosevelt Lake Addition, O'Brien's Plat, etc.

Assessment Roll and Tax List of Real Property in the Town of Crooked Lake

* Indicate Type of Property: R-Residential, C-Commercial, I-Industrial, U-Utility, F-Farm, L-Lakeshore, T-Timber, M-Mineral

Table with columns: IN WHOSE NAME ASSESSED, TO WHOM TRANSFERRED, SUBDIVISION, No. of Lot, Town or Block, No. of Acres, TRUER AND FULL VALUATIONS, ASSESSED VALUATIONS, FINAL EQUALIZED VALUE.

Cass County, Minnesota, for Taxes for the Year 1958.

Table with columns: SOLD FOR TAXES, VALUATIONS BY SCHOOL DISTRICTS, Tax Including State Homestead, SPECIAL TAXES, TOTAL TAXES, PAID, WHEN PAID, Number of Receipt, March Settlement, June Settlement, Penalty, November Settlement, Collections to First Monday in January 1960, Delinquent on First Monday in January 1960, Total Delinquent Tax and Penalty, REMARKS.

Vertical text on the left margin: Lusher's, Ag. Sopen Company's, Roosevelt Lake Addition, O'Brien's Plat, Roosevelt Lake Addition, Roosevelt Lake Shore, Res Annuity, First of O'Brien's Plat, Roosevelt Lake Addition.

Vertical text on the right margin: Sold for Addition, Roosevelt Lake Shore, Res Annuity, First of O'Brien's Plat, Roosevelt Lake Addition.

Assessment Roll and Tax List of Real Property in the Town of Crooked Lake

Indicate Type of Property: R-Residential, C-Commercial, I-Industrial, U-Utility, F-Farm, L-Lakeshore, T-Timber, M-Mineral

Cass County, Minnesota, for Taxes for the Year 1958.

Table with columns: IN WHOSE NAME ASSESSED, TO WHOM TRANSFERRED, SUBDIVISION, DESCRIPTION OF PROPERTY, TRUE AND FULL VALUATIONS, ASSESSED VALUATIONS, VALUATIONS BY SCHOOL DISTRICTS AS EQUALIZED BY DEPARTMENT OF TAXATION, SOLD FOR TAXES, PAID, WHEN PAID, Number of Receipt, March Settlement 1959, June Settlement 1959, Penalty, November Settlement 1959, Penalty, Collections to First Monday in January 1960, Penalty, Delinquent on First Monday in January 1960, Total Delinquent Tax and Penalty, REMARKS.

Handwritten notes: Gilbert R. & Lois L. Sablin, Part of Govt Lots 2-3-4 Sec 9-13 9-26

Handwritten notes: John J. & Lucille L. Stewart

90/2

46 80

46 80

Personal

Assessment Roll and Tax List of Real Property in the Town of *Quoted Lake*

Cass County, Minnesota, for Taxes for the Year 1958.

Form 50 Indicate Type of Property: R-Residential, C-Commercial, I-Industrial, U-Utility, F-Farm, L-Lakeshore, T-Timber, M-Mineral

Table with columns: IN WHOSE NAME ASSESSED, TO WHOM TRANSFERRED, SUBDIVISION, TRUE AND FULL VALUATIONS (LAND, BUILDINGS, MACHINERY, TOTAL), ASSESSED VALUATIONS (RURAL, ALL OTHER, MACHINERY, TOTAL ASSESSED), and FINAL EQUALIZED VALUE.

Table with columns: VALUATIONS BY SCHOOL DISTRICTS AS EQUALIZED BY DEPARTMENT OF TAXATION (District No., Rate, etc.), TAX INCLUDING STATE HOMESTEAD, SPECIAL TAXES, TOTAL TAXES, PAID, WHEN PAID, Number of Receipt, March Settlement, June Settlement, Penalty, November Settlement, Collections to First Monday in January 1960, Delinquent on First Monday in January 1960, Total Delinquent Tax and Penalty, and REMARKS.

Vertical text on the left margin: Auditor's Office, Assessor's Office, Treasurer's Office, etc.

Vertical text on the right margin: Personal

