

ASSESSMENT & TAX LIST
Crooked Lake
1953

Assessment Roll and Tax List of Real Property in the Town of Brookfield Falls

Form 501 (53) State-wide property assessment

IN WHOSE NAME ASSESSED	TO WHOM TRANSFERRED	DESCRIPTION OF PROPERTY				TRUE AND FULL VALUATIONS				ASSESSED VALUATIONS					FINAL EQUALIZED VALUE		
		SUBDIVISION	Sec. of Lot	Town or Block	Number of Acres of Land	LAND Exclusive of Structures and Improvements	BUILDINGS and Other Structures	MACHINERY Permanently Attached to Real Estate	TOTAL True and Full Value	RURAL		ALL OTHER		MACHINERY Permanently Attached to Real Estate		TOTAL ASSESSED VALUE	Total Assessed Value as Equalized by the Board of Review
										Acres	Value	Homestead Up to \$4,000 20%	Over \$4,000 and Non-Homestead 33 1/3%				
<i>Jam. Schultz</i>		NE 1/4 of NW 1/4		10 13926	40												
<i>State of Minn.</i>		NW 1/4 of NW 1/4			40												
<i>Libert & Co. Leis. Sablin</i>		SW 1/4 of NW 1/4			40												
<i>G.R. Leis. Sablin</i>		SE 1/4 of NW 1/4			40												
<i>Edwards & Ingelberg Mystrom</i>		520' of S. 1/4 lying N of Hwy #6			40												
<i>State of Minnesota</i>		NE 1/4 of NW 1/4			40												
<i>Anna & Bernard Meeke</i>		NW 1/4 of NW 1/4			40												
<i>Lloyd A. Brown</i>		SW 1/4 of NW 1/4			40												
<i>"</i>		SE 1/4 of NW 1/4			40												
<i>State of Minnesota</i>		NE 1/4 of SW 1/4			40												
<i>Lloyd A. Brown</i>		NW 1/4 of SW 1/4			40												
<i>"</i>		SW 1/4 of SW 1/4			40												
<i>State of Minnesota</i>		SE 1/4 of SW 1/4			40												
<i>Gerald Todd</i>		NE 1/4 of SE 1/4			40												
<i>State of Minnesota</i>		NW 1/4 of SE 1/4			40												
<i>State of Minnesota</i>		SW 1/4 of SE 1/4			40												
<i>State of Minnesota</i>		SE 1/4 of SE 1/4			40												
					320												

Cass County, Minnesota, for Taxes for the Year 1953.

SOLD FOR TAXES	VALUATIONS BY SCHOOL DISTRICTS AS EQUALIZED BY DEPARTMENT OF TAXATION						State Tax on Non-Homestead	SPECIAL TAXES	TOTAL TAXES	PAID	WHEN PAID	Number of Receipt	March Settlement 1953	June Settlement 1954	November Settlement 1954	Collections to First Monday in January 1955	Delinquent on First Monday in January 1955	Total Delinquent Tax and Penalty	REMARKS	
	District No.	District No.	District No.	District No.	District No.	District No.														
	Rate	Rate	Rate	Rate	Rate	Rate														
1																				
2																				
3																				
4																				
5																				
6																				
7																				
8																				
9																				
10																				
11																				
12																				
13																				
14																				
15																				
16																				
17																				
18																				
19																				
20																				

Auditor's Plat of Lots
Hastburn Outlots
Tingdale Bros.
Roosevelt Trails
Iowan Heights
Plat of Lots
Hastburn Outlots

Assessment Roll and Tax List of Real Property in the Town of Wood Lake

Form SCD (53) 1-1-53

IN WHOSE NAME ASSESSED	TO WHOM TRANSFERRED	DESCRIPTION OF PROPERTY				TRUE AND FULL VALUATIONS										FINAL EQUALIZED VALUE	
		SUBDIVISION	Sec. of Lot	Town or Block	No. of Acres of Land	Machinery Permanently Attached to Real Estate	LAND Exclusive of Structures and Improvements	BUILDINGS and Other Structures	TOTAL True and Full Value	RURAL		ALL OTHER		Machinery Permanently Attached to Real Estate	TOTAL ASSESSED VALUE		Total Assessed Value as Equalized by the Board of Review
										Acres	100ths	Homestead Up to \$4,000 20%	Over \$4,000 and Non-Homestead 33 1/3%				
Frank H. Lempere		NE 1/4 of NE 1/4			19.13926	40	21										
Maudie L. Lempere		NW 1/4 of NE 1/4				40											
State of Minnesota		SW 1/4 of NE 1/4															
State of Minnesota		SE 1/4 of NE 1/4															
Clifford L. & Pearl Thom		NE 1/4 of NW 1/4				40											
State of Minnesota		NW 1/4 of NW 1/4															
State of Minnesota		SW 1/4 of NW 1/4															
State of Minnesota		SE 1/4 of NW 1/4															
State of Minnesota		NE 1/4 of SW 1/4															
State of Minnesota		NW 1/4 of SW 1/4															
State of Minnesota		SW 1/4 of SW 1/4															
Moneta Improvement Co		SE 1/4 of SW 1/4				40											
"		NE 1/4 of SE 1/4				40											
"		NW 1/4 of SE 1/4				40											
"		SW 1/4 of SE 1/4															
"		SE 1/4 of SE 1/4															
						240											

Cass County, Minnesota, for Taxes for the Year 1953.

SOLD FOR TAXES	VALUATIONS BY SCHOOL DISTRICTS AS EQUALIZED BY DEPARTMENT OF TATION						Tax including State Homestead	State Tax on Non-Homestead	SPECIAL TAXES	TOTAL TAXES	PAID	WHEN PAID	Number of Receipt	March Settlement 1954	June Settlement 1954	Penalty	November Settlement 1954	Penalty	Collections to First Monday in January 1955	Penalty	Delinquent on First Monday in January 1955	Total Delinquent Tax and Penalty	REMARKS	
	District No.	District No.	District No.	District No.	District No.	District No.																		
	Rate	Rate	Rate	Rate	Rate	Rate																		
1																								
2																								
3																								
4																								
5																								
6																								
7																								
8																								
9																								
10																								
11																								
12																								
13																								
14																								
15																								
16																								
17																								
18																								
19																								
20																								

Androp's Plat of Lake Ringdale Bros. Washburn Outlets Roosevelt Trails Iovana Heights Washburn Outlets

checked
5-19-50

N. Line of South Lot 4 Sec. 23 -139-26

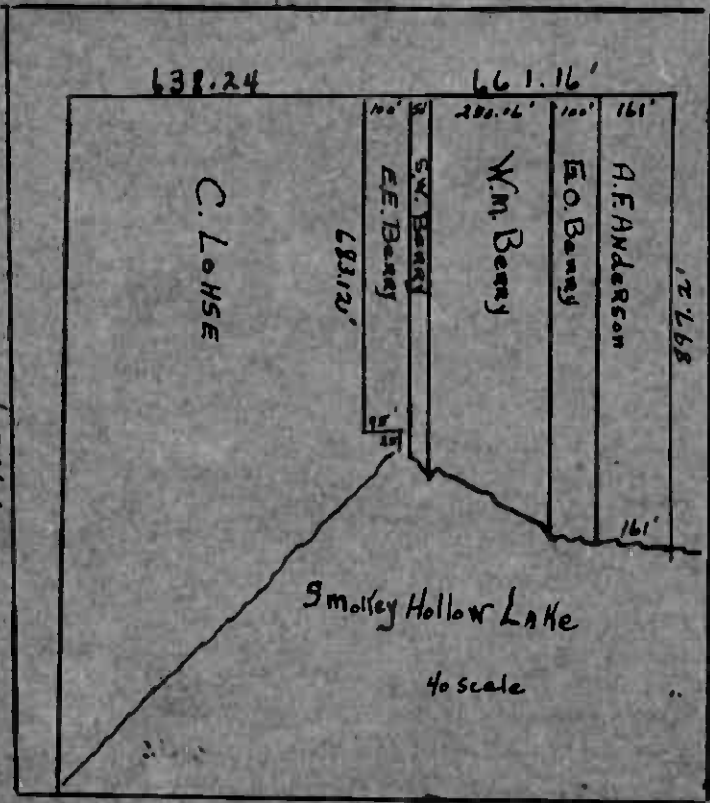
	1.26 acs		
	2.05 acs	Walter M. & Althea H. Jack	A
	4.10 acs	A. G. Doyen	B
40'	6.12 acs	Eva Rindahl Kohler	C & D
200'	6.27 acs	Hazel G. & Geo. W. Olson	E
0.20 acs			F
	3.21 acs	Dorothy L. & Clarence Hanes Hans & Helen - Deanna	G
	3.22 acs		H
	3.29 acs	Lawrence & Lauretta Rogers	I
	3.31 acs	Walter De Vange Sr. & Donald H. De Vange Oliver Wood	J
	3.35 acs	Minnie J. Falk	K
	3.38 acs	Wm. J. & Delia M. Smith A. G. Doyen	L
	3.40 acs		M
	4.56 acs	Wm. J. & Delia M. Smith	N
	9.70 acs	Wm. J. & Delia M. Smith Nathaniel & Dorothy Goldberg	O

100' 100' 150' 75' 75' 75' 75' 75' 75' 100' 210.5'

S. Line of South Lot 4

9/25/68

Lot 9
35-139-26



Assessment Roll and Tax List of Real Property in the Dunes of Brookside Lake

Form 80 (83) 1-1-53

DESCRIPTION OF PROPERTY

TRUE AND FULL VALUATIONS

ASSESSED VALUATIONS

FINAL EQUALIZED VALUE

IN WHOSE NAME ASSESSED	TO WHOM TRANSFERRED	SUBDIVISION	Sec. or Lot	Town or Block	Rtg.	Number of Acres of Land	No. School District	Indicate Homestead Yes or No	Indicate Agricultural Yes or No	TRUE AND FULL VALUATIONS			ASSESSED VALUATIONS					Total Assessed Value as Equalized by the Board of Review	FINAL EQUALIZED VALUE	
										LAND Exclusive of Structures and Improvements	BUILDINGS and Other Structures	MACHINERY Permanently Attached to Real Estate	TOTAL True and Full Value	RURAL		ALL OTHER				MACHINERY Permanently Attached to Real Estate
Reinhardt W. & Raymond Blackburn	Dingdale Bros. Roosevelt Trails		1	24			6-1													
Harry L. & Hannah M. Blackburn			2	20																
George R. & Esther L. Kasein			3	3																
Chas. H. Saefte	Assault Austin		4	4																
"	"		5	5																
Herbert H. & Minna Schaefer			6	6																
"	"		7	7																
Jennie L. Arneson			8	8																
"	"		9	9																
Thorsten & Hansson	Barney & Bessie Data		10	25																
"	"		11	2																
"	"		12	3																
"	"		13	4																
"	"		14	5																
"	"		15	6																
"	"		16	7																
"	"		17	8																
"	"		18	9																
State of Minnesota		Outlot	19																	
			20																	

9000 - Homestead released by town board.

H. 2 N. 30

Cass County, Minnesota, for Taxes for the Year 1953.

SOLD FOR TAXES	VALUATIONS BY SCHOOL DISTRICTS AS EQUALIZED BY DEPARTMENT OF TAXATION						Tax Including State Homestead	State Tax on Non-Homestead	SPECIAL TAXES	TOTAL TAXES	PAID	WHEN PAID	Number of Receipt	March Settlement 1954	June Settlement 1954	Penalty	November Settlement 1954	Penalty	Collections to First Monday in January 1955	Penalty	Delinquent on First Monday in January 1955	Total Delinquent Tax and Penalty	REMARKS
	District No.	District No.	District No.	District No.	District No.	District No.																	
1						69	1438	32	1470	1	PAID IN FULL	MAY 21 1954	6488		1470								
2						90	1876	42	1918	2	PAID IN FULL	MAY 31 1954	9046		1918								
3	SOLD FOR TAXES					17	354	08	362	3	PAID IN FULL	OCT 30 1954	15168				362		13				
4						41	854		854	4	PAID IN FULL	MAY 25 1954											
5						8	166		166	5	PAID IN FULL	MAY 25 1954	6746		1020								
6						9	188	04	192	6	PAID IN FULL	MAY 25 1954											
7						9	188	04	192	7	PAID IN FULL	MAY 25 1954	6737		384								
8	SOLD FOR TAXES					9	188	04	192	8													
9	SOLD FOR TAXES					9	188	04	192	9													
10						7	164		164	10	1st Half Paid	MAY 31 1954											
11						7	164		164	11	2nd Half Paid	OCT 1 1954											
12						7	164		164	12	1st Half Paid	MAY 31 1954											
13						7	164		164	13	2nd Half Paid	OCT 1 1954	4133				4176						
14						7	164		164	14	1st Half Paid	MAY 31 1954	9154										
15						30	840	14	854	15	2nd Half Paid	OCT 1 1954											
16						51	6374	24	6398	16	1st Half Paid	MAY 31 1954											
17						6	140		140	17	2nd Half Paid	OCT 1 1954											
18						6	140		140	18	1st Half Paid	MAY 31 1954											
19										19													
20										20													

49 212 266 275 = 324 81 = 343 356 = 177 5440 8314 136 13754 13890 8968 4588 384

The Map Auditor's Plat of Lake Washburn Outlots

Dingdale Bros. Roosevelt Trails

At Lake Heights Roosevelt & Soc. Dingdale Bros. Lake Roosevelt Shores Iowa Heights a part of Lake Washburn Outlots

Assessment Roll and Tax List of Real Property in the Town of Down of Crowded Lake

Form 50 (13)

IN WHOSE NAME ASSESSED	TO WHOM TRANSFERRED	SUBDIVISION	DESCRIPTION OF PROPERTY			TRUE AND FULL VALUATIONS					ASSESSED VALUATIONS					FINAL EQUALIZED VALUE		
			Sec. or Lot	Town or Block	Rng.	Number of Acres of Land	LAND Exclusive of Structures and Improvements	BUILDINGS and Other Structures	MACHINERY Permanently Attached to Real Estate	TOTAL True and Full Value	RURAL		ALL OTHER		MACHINERY Permanently Attached to Real Estate		TOTAL ASSESSED VALUE	Total Assessed Value as Equalized by the Board of Review
											Acres	100th	Homestead Up to \$4,000 20%	Over \$4,000 and Non-Homestead 33 1/3%				
Robert S. Evelyn J. Plummer		Pines W. Plenty on Lake Washburn	1															
"		"	2															
Richard Anderson		"	3															
Robert S. + Evelyn J. Plummer		"	4															
John C. + Ruth N. Wiley		"	5															
Willard E. + Grace Carlyle		"	6															
Robert S. + Evelyn J. Plummer		Elizabeth Bohren	7															
Robert S. + Evelyn J. Plummer		"	8															
"		"	9															
"		"	10															
"		"	11															
"		"	12															
"		"	13															
"		"	14															
Alan B. + Joan B. Sanberg		"	15															
Robert S. + Evelyn J. Plummer		"	16															
"		"	17															
"		"	18															
"		"	19															
"		"	20															

Cass County, Minnesota, for Taxes for the Year 1953.

SOLD FOR TAXES	VALUATIONS BY SCHOOL DISTRICTS AS EQUALIZED BY DEPARTMENT OF TAXATION						Tax including State Homestead Mills	State Tax on Non-Homestead 4 1/2 Mills	SPECIAL TAXES	TOTAL TAXES	PAID	WHEN PAID	Number of Receipts	March Settlement 1954	June Settlement 1954	Penalty	November Settlement 1954	Penalty	Collections to First Monday in January 1955	Penalty	Delinquent on First Monday in January 1955	Total Delinquent Tax and Penalty	REMARKS
	District No.	District No.	District No.	District No.	District No.	District No.																	
	Rate	Rate	Rate	Rate	Rate	Rate																	
1							292	06		298	1	1st Half Paid MAY 31 1954 2nd Half Paid OCT 30 1954											
2							292	06		298	2	1st Half Paid MAY 31 1954 2nd Half Paid OCT 30 1954	9048		511		511						
3							292	06		298	3	1st Half Paid MAY 31 1954 2nd Half Paid OCT 30 1954	14933										
4							126	02		128	4	1st Half Paid MAY 31 1954 2nd Half Paid OCT 30 1954											
5							1376	30		1406	5	PAID IN FULL MAY 21 1954	6468		1406								
6							1438	32		1470	6	1st Half Paid MAY 31 1954 2nd Half Paid OCT 30 1954	6485		735		735						
7							292	06		298	7	1st Half Paid MAY 31 1954 2nd Half Paid OCT 30 1954											
8							292	06		298	8	1st Half Paid MAY 31 1954 2nd Half Paid OCT 30 1954											
9							104	02		106	9	1st Half Paid MAY 31 1954 2nd Half Paid OCT 30 1954											
10							104	02		106	10	1st Half Paid MAY 31 1954 2nd Half Paid OCT 30 1954	9048		3985		3985						
11							104	02		106	11	1st Half Paid MAY 31 1954 2nd Half Paid OCT 30 1954	14933										
12							188	04		192	12	1st Half Paid MAY 31 1954 2nd Half Paid OCT 30 1954											
13							3356	76		3432	13	1st Half Paid MAY 31 1954 2nd Half Paid OCT 30 1954											
14							3356	76		3432	14	1st Half Paid MAY 31 1954 2nd Half Paid OCT 30 1954											
15							3440	76		3516	15	PAID IN FULL MAY 31 1954	9109		3516								
16							292	06		298	16	1st Half Paid MAY 31 1954 2nd Half Paid OCT 30 1954	14933		298		298						
17							292	06		298	17	1st Half Paid MAY 31 1954 2nd Half Paid OCT 30 1954	9048										
18											18												
19							2752	62		2814	19	1st Half Paid MAY 31 1954 2nd Half Paid OCT 30 1954	9048		1759		1759						
20							688	16		704	20	1st Half Paid MAY 31 1954 2nd Half Paid OCT 30 1954	14933										
							945	422		19076					12210		7288						

