

Auditor's Office, Cass County, Minnesota

I J. C. Byrne Auditor of Cass County, and State of Minnesota, do hereby certify that the following is a correct list of the Taxes levied on the Real and Personal Property in the Village of Pine River for the year 1914 (L. S.)

WITNESS my hand and official seal, the 4th day of January 1915
J. C. Byrne County Auditor

Treasurer's Office, Cass County, Minnesota

RECEIVED this the first Monday (being the 4th day) of January, A. D. 1915, of G. A. Bacon Auditor of Cass County, Minnesota, the Tax List of all Taxable Real and Personal Property in the Village of Pine River in said County of Cass for the year A. D. 1914, as specified above, and amounting to Thirty Nine Hundred Eighty Seven ⁷³/₁₀₀ Dollars.
W. J. McKee Treasurer of Cass County.

Tax List of Real Property in the Village of Vil. of Pine River

Cass County, Minnesota, for Taxes of the Year 1914

IN WHOSE NAME ASSESSED	TO WHOM TRANSFERRED	Sold for Taxes	SUBDIVISION	Sec. or Lot	Twp. or Block	Rng.	No. of Acres		VALUATION	GENERAL TAXES			Delinquent Road Tax		State School Bonds	Ditch No.	SCHOOL DISTRICT		TOTAL TAXES	PAID	WHEN PAID	No. of Receipt	March Settlement	June Settlement	Penalty	November Settlement	Penalty	Collections to First Monday in January	Penalty	Delinquent on First Monday in January	REMARKS			
							Acres	100ths		Mills	State Sch'l	County	Local Sch'l	Total			Ditch No.	Amount of Tax														District No.	District Rate	District Rate
<i>Original Plat</i>																																		
<i>Footings Brought Forward,</i>																																		
<i>Mrs. J. G. Dawes</i>	<i>25 x 115 ft (C. B. Dall - 25 x 90 ft.)</i>			<i>1</i>	<i>4</i>				<i>20.00</i>																									
<i>"</i>	<i>"</i>			<i>2</i>	<i>"</i>																													
<i>Alice Leif</i>	<i>vill Pine River rear 25 ft.</i>			<i>3</i>	<i>"</i>				<i>12.00</i>																									
<i>"</i>	<i>"</i>			<i>4</i>	<i>"</i>																													
<i>Alice Leif</i>				<i>5</i>	<i>"</i>				<i>250</i>																									
<i>Geo. W. Ruscoe</i>				<i>6</i>	<i>"</i>				<i>520</i>																									
<i>Nels Holman</i>	<i>Peter Lillstrom</i>			<i>7</i>	<i>"</i>				<i>240</i>																									
<i>Nels Holman</i>				<i>8</i>	<i>"</i>				<i>480</i>																									
<i>Bank of Pine River</i>				<i>9</i>	<i>"</i>				<i>1000</i>																									
<i>Mrs. J. G. Dawes</i>				<i>1</i>	<i>2</i>				<i>1600</i>																									
<i>"</i>				<i>2</i>	<i>"</i>																													
<i>P. Behler</i>				<i>3</i>	<i>"</i>																													
<i>"</i>				<i>4</i>	<i>"</i>				<i>80</i>																									
<i>"</i>				<i>5</i>	<i>"</i>																													
<i>F. P. Lilam</i>	<i>J. A. Bark</i>			<i>6</i>	<i>"</i>				<i>80</i>																									
<i>"</i>	<i>"</i>			<i>7</i>	<i>"</i>																													
<i>Alfred Magnusson</i>				<i>8</i>	<i>"</i>				<i>40</i>																									
<i>Mrs. J. G. Dawes</i>				<i>9</i>	<i>"</i>				<i>80</i>																									
<i>"</i>				<i>10</i>	<i>"</i>																													
<i>"</i>				<i>11</i>	<i>"</i>				<i>80</i>																									
<i>Footings Carried Forward,</i>									<i>7650</i>																									

OCT 20 1915 8323

MAY 31 1915 5028

APR 10 1915 2405

OCT 25 1914 7708

OCT 30 1915 8759

MAY 31 1915 6139

OCT 30 1915 8395

MAY 31 1915 3974

OCT 30 1915 8074

MAY 31 1915 5405

OCT 30 1915 8554

MAY 28 1915 4422

MAY 31 1915 5652

OCT 30 1915 8323

MAY 31 1915 5028

OCT 22 1915 7584

MAR 4 1915 1931

MAY 31 1915 4823

MAY 15 1915 3327

OCT 30 1915 8323

OCT 30 1915 5028

OCT 30 1915 43605

Tax List of Real Property in the Village of Village of Pine River

Cass County, Minnesota, for Taxes of the Year 1914

IN WHOSE NAME ASSESSED	TO WHOM TRANSFERRED	Sold for Taxes	SUBDIVISION	Sec. or Lot	Twp. or Block	Rng.	No. of Acres		VALUATION	GENERAL TAXES			Delinquent Road Tax		State School Bonds	Ditch No.	SCHOOL DISTRICT		TOTAL TAXES	PAID	WHEN PAID	No. of Receipt	March Settlement	June Settlement	Penalty	November Settlement	Penalty	Collections to First Monday in January	Penalty	Delinquent on First Monday in January	REMARKS																				
							Acres	100ths		State	County	Local	Ditch No.	Amount of Tax			District No.	District Rate														District Rate	District Rate																		
									Dollars	\$	cts.	\$	cts.	\$	cts.	\$	cts.	\$	cts.	Month	Day	Year	\$	cts.	\$	cts.	\$	cts.	\$	cts.	\$	cts.	\$	cts.																	
<i>Original Plat</i>																																																			
<i>Footings Brought Forward,</i>																																																			
<i>Martin Hagen (Lena)</i>	<i>Lena Hagen</i>			6	4				300												2nd Half Paid	OCT 28	1914	7941																											
<i>Lena</i>				7	"																1st Half Paid	MAY 11	1915	3133	853		855																								
<i>W. H. Spooner</i>	<i>L. H. Peck</i>			1	5				240												Paid in Full	MAY 31	1915	4676	1368																										
<i>Geo. W. Ruscol</i>				2	"																2nd Half Paid	OCT 30	1915	8395																											
				3	"				260												One-half Paid	MAY 31	1915	6974	741		741																								
<i>A. J. Linden</i>	<i>Peter P. Hanson</i>			4	"																																														
<i>P. P. Hanson</i>	<i>Peter Lillstrom</i>			5	"				240												PAID IN FULL	MAY 31	1915	5639	1368																										
				6	"				.80												456	PAID IN FULL	SEP 7	1915	6951																										
				7	"																																														
<i>Myrtle Lillstrom</i>				8	"				300												One-half Paid	OCT 30	1915	8497																											
				9	"																1st Half Paid	MAY 31	1915	5725	855		853																								
<i>A. J. Linden</i>				10	"				300												1710																														
				11	"																																														
<i>Otto Anderson</i>				12	"				300												2nd Half Paid	OCT 26	1914	7752																											
				13	"																1st Half Paid	MAY 21	1915	3714	853		855																								
<i>L. A. Curtis</i>				14	"				320												2nd Half Paid	OCT 27	1914	7896																											
				15	"																1st Half Paid	MAY 19	1915	3606	912		912																								
				16	"																																														
				17	"																																														
<i>Footings Carried Forward,</i>									2346																																										
																						13338																													

Tax List of Real Property in the Village of VII. of Pine River

Cass County, Minnesota, for Taxes of the Year 1914

IN WHOSE NAME ASSESSED	TO WHOM TRANSFERRED	Sold for Taxes	SUBDIVISION	Sec. or Lot	Twp. or Block	No. of Acres Acres 100ths	VALUATION Dollars	GENERAL TAXES Mills		Delinquent Road Tax		State School Bonds	Ditch No.	SCHOOL DISTRICT		TOTAL TAXES \$ cts.	PAID	WHEN PAID Month Day Year	No. of Receipt	March Settlement \$ cts.	June Settlement \$ cts.	Penalty \$ cts.	November Settlement \$ cts.	Penalty \$ cts.	Collections to First Monday in January \$ cts.	Penalty \$ cts.	Delinquent on First Monday in January \$ cts.	REMARKS					
								State Sch'l County Town Local Sch'l Total	Ditch No.	Amount of Tax \$ cts.	District No. Rate Mills			District No. Rate Mills																			
			<i>Original Plat</i>																														
			<i>Footings Brought Forward,</i>																														
<i>Lavern Hardy</i>				<i>1</i>	<i>6</i>		<i>10</i>																										
<i>"</i>				<i>2</i>	<i>"</i>		<i>10</i>																										
<i>"</i>				<i>2</i>	<i>"</i>		<i>10</i>																										
<i>"</i>				<i>4</i>	<i>"</i>		<i>10</i>																										
<i>"</i>				<i>5</i>	<i>"</i>		<i>10</i>																										
<i>"</i>				<i>6</i>	<i>"</i>		<i>20</i>																										
<i>"</i>				<i>7</i>	<i>"</i>		<i>20</i>																										
<i>Mary V. Smith</i>				<i>8</i>	<i>"</i>																												
<i>"</i>				<i>9</i>	<i>"</i>		<i>320</i>																										
<i>Reuben Spencer</i>				<i>10</i>	<i>"</i>																												
<i>"</i>				<i>11</i>	<i>"</i>		<i>320</i>																										
<i>"</i>				<i>12</i>	<i>"</i>																												
<i>1st. State Bank of P. River</i>			<i>Front 50 ft of Lot</i>	<i>13</i>	<i>"</i>		<i>160</i>																										
<i>Webber & Hill</i>			<i>Balance of Lot 13 + all of</i>	<i>14</i>	<i>"</i>		<i>118</i>																										
<i>Webber & Hill</i>				<i>15</i>	<i>"</i>		<i>400</i>																										
<i>"</i>				<i>16</i>	<i>"</i>																												
<i>Michael Smith</i>			<i>21 ft. of Lot</i>	<i>17</i>	<i>"</i>		<i>200</i>																										
<i>W. J. Linden</i>	<i>P. N. Kruckow</i>		<i>East 4 ft of L. 16 + W 8 ft of Lot</i>	<i>17</i>	<i>"</i>		<i>200</i>																										
<i>James C. Geary</i>	<i>First St. Bk. Pine River</i>		<i>East 17 ft of</i>	<i>18</i>	<i>"</i>		<i>586</i>																										
<i>John J. Allen</i>	<i>R. C. Spencer</i>			<i>19</i>	<i>"</i>		<i>106</i>																										
			<i>Footings Carried Forward,</i>				<i>2500</i>																										

Corner 17th & Lot 16 Paid by W. J. Linden Jan 21 1915

OCT 30 1915 8903

5713 31

APR 28 1915 5741

1824 ✓

MAY 31 1915 5102

1824 ✓

MAY 31 1915 5652

912 ✓

4674

672

2280

APR 28 1915 5741

1140 ✓

MAY 19 1915 3537

1140 ✓

APR 17 1915 2537

3340 ✓

MAY 31 1915 5702

604 ✓

14249

Tax List of Real Property in the Village of Vil. of Pine River

Cass County, Minnesota, for Taxes of the Year 1914

IN WHOSE NAME ASSESSED	TO WHOM TRANSFERRED	Sold for Taxes	SUBDIVISION	Sec. or Lot	Twp. or Block	No. of Acres		VALUATION	GENERAL TAXES		Delinquent Road Tax		State School Bonds	Ditch No.	SCHOOL DISTRICT		TOTAL TAXES	PAID	WHEN PAID	No. of Receipt	March Settlement	June Settlement	Penalty	November Settlement	Penalty	Collections to First Monday in January	Penalty	Delinquent on First Monday in January	REMARKS						
						Acres	100ths		Mills	Mills	Ditch No.	Amount of Tax			District No.	District Rate														District Rate	Month	Day	Year	\$	cts.
<i>Original Plat</i>																																			
<i>Footings Brought Forward,</i>																																			
<i>J. E. Geary & J. Allen</i>				<i>20</i>	<i>6</i>			<i>106</i>									<i>604</i>	<i>paid in full</i>	<i>MAY 12 1915</i>	<i>3172</i>															
<i>J. F. Kildie</i>				<i>21</i>	<i>"</i>			<i>600</i>									<i>3420</i>	<i>2nd Half Paid</i>	<i>NOV 12 1915</i>	<i>9659</i>															
<i>J. R. Anderson</i>	<i>J. K. Ramsey</i>			<i>22</i>	<i>"</i>			<i>586</i>									<i>3340</i>	<i>1st Half Paid</i>	<i>MAY 31 1915</i>	<i>5448</i>															
<i>"</i>				<i>23</i>	<i>"</i>			<i>106</i>									<i>604</i>	<i>2nd Half Paid</i>	<i>OCT 28 1914</i>	<i>4430</i>															
<i>"</i>				<i>24</i>	<i>"</i>			<i>246</i>									<i>604</i>	<i>1st Half Paid</i>	<i>MAY 21 1915</i>	<i>7746</i>															
<i>Geary & Hill</i>				<i>1</i>	<i>7</i>			<i>146</i>									<i>1402</i>	<i>1st Half Paid</i>	<i>MAY 21 1915</i>	<i>3780</i>															
<i>"</i>				<i>2</i>	<i>"</i>			<i>106</i>									<i>832</i>	<i>One-half Paid</i>	<i>MAY 31 1915</i>	<i>6646</i>															
<i>F. L. Hill & J. E. Geary</i>				<i>3</i>	<i>"</i>			<i>106</i>									<i>604</i>	<i>One-half Paid</i>	<i>MAY 31 1915</i>	<i>7640</i>															
<i>W. H. Ellwood</i>				<i>4</i>	<i>"</i>			<i>126</i>									<i>604</i>	<i>One-half Paid</i>	<i>MAY 31 1915</i>	<i>6117</i>															
<i>Albert Eastvold</i>				<i>5</i>	<i>"</i>			<i>106</i>									<i>718</i>	<i>One-half Paid</i>	<i>MAY 31 1915</i>	<i>8828</i>															
<i>E. L. Fosberg & B. E. Wideman</i>				<i>6</i>	<i>"</i>			<i>400</i>									<i>604</i>	<i>One-half Paid</i>	<i>MAY 31 1915</i>	<i>8781</i>															
<i>F. S. Ager</i>				<i>7</i>	<i>"</i>			<i>800</i>									<i>2280</i>	<i>One-half Paid</i>	<i>OCT 30 1915</i>	<i>6743</i>															
<i>"</i>				<i>8</i>	<i>"</i>			<i>800</i>									<i>4560</i>	<i>2nd Half Paid</i>	<i>OCT 13 1915</i>	<i>7336</i>															
<i>"</i>				<i>8</i>	<i>"</i>			<i>800</i>									<i>4560</i>	<i>1st Half Paid</i>	<i>MAY 15 1915</i>	<i>3302</i>															
<i>Fredrick Miller</i>	<i>Ella C. Hill</i>			<i>9</i>	<i>"</i>			<i>300</i>									<i>1710</i>	<i>2nd Half Paid</i>	<i>SEP 30 1915</i>	<i>8410</i>															
<i>Isaac Norman</i>				<i>10</i>	<i>"</i>			<i>400</i>									<i>2280</i>	<i>One-half Paid</i>	<i>MAY 31 1915</i>	<i>5109</i>															
<i>H. S. Gilbert</i>	<i>9 blocks 70 ft. of lots 117 & 12 to Farmers State Bk. of Pine River</i>			<i>11</i>	<i>"</i>			<i>400</i>									<i>2280</i>	<i>2nd Half Paid</i>	<i>OCT 30 1915</i>	<i>8300</i>															
<i>"</i>				<i>12</i>	<i>"</i>			<i>400</i>									<i>2280</i>	<i>1st Half Paid</i>	<i>MAY 21 1915</i>	<i>3773</i>															
<i>Pine River Electric Light & Power Co. (Anig Bros. et al)</i>								<i>2000</i>									<i>681</i>	<i>2nd Half Paid</i>	<i>OCT 30 1915</i>	<i>8364</i>															
								<i>2000</i>									<i>11400</i>	<i>One-half Paid</i>	<i>MAY 31 1915</i>	<i>5648</i>															
								<i>6537</i>									<i>39241</i>																		
								<i>1200</i>																											
								<i>6537</i>																											

Tract South east of North line of Barclay Ave. and North of North line of Norway Ave. extended to river and East of East line of 4th St. Also that part of Barclay Ave. extending across river.

Lot # 347N

Tax List of Real Property in the Village of VII. of Pine River

Cass County, Minnesota, for Taxes of the Year 1914

IN WHOSE NAME ASSESSED	TO WHOM TRANSFERRED	Sold for Taxes	SUBDIVISION	Sec. or Lot	Twp. or Block	Rng.	No. of Acres Acres 100ths	VALUATION Dollars	GENERAL TAXES		Delinquent Road Tax		State School Bonds	Ditch No.	SCHOOL DISTRICT		TOTAL TAXES	PAID	WHEN PAID	No. of Receipt	March Settlement	June Settlement	Penalty	November Settlement	Penalty	Collections to First Monday in January	Penalty	Delinquent on First Monday in January	REMARKS		
									State Mills	Local Mills	Ditch No.	Amount of Tax			District No.	District Rate															
Madge S. Forbes	relic Joley Lauritson		Original Plat				80	80									456	PAID IN FULL	AUG 1 4 1915	6770				456	46						
	no 200 ft x 15		Footings Brought Forward				120	120									684	2nd Half Paid	OCT 30 1915	9024		342		342							
J. H. Stewart	Etta Stewart		Block	18	18		46	46									262	2nd Half Paid	OCT 30 1915	9026											
Wm. Lauritson	Mary J. Foley		Block	18	18		40	40																							
Will G. Stewart			Block	18	18		40	40																							
Wm. Lauritson	F. R. Anderson		Block	18	18		40	40																							
H. L. Seltzer	Mrs. Anderson		Block	17	17		200	200																							
"	V. E. Davies		Part				300	300																							
Wm. Jenkins	Wm. H. Jenkins		Block				320	320																							
J. H. Stewart	Wm. H. Jenkins		Block				36	36																							
							72	72																							
Emmal. Davis	(E 1/2 of Lot 1)		Dawson	1	1		400	400																							
Goldie Cromett	West 1/2			2	"		40	40																							
Mary H. Gilbert	South 1/2 of Lot 4 + Lot 5			2	"		400	400																							
Goldie Cromett	W 1/2 " " 4 + "			5	"		400	400																							
J. J. Allen	Frances M. Allen			1	2		480	480																							
Mildred Twig				2	"		200	200																							
E. B. Dahl				3	"		280	280																							
Jos. Zigmund				1	3		400	400																							
				2	"																										
Lloyd Curtis				3	"		80	80																							
J. H. Kimball	E. E. Martin			4	"		80	80																							
E. E. Martin				5	"		100	100																							
			Footings Carried Forward																												
							4114	4114																							

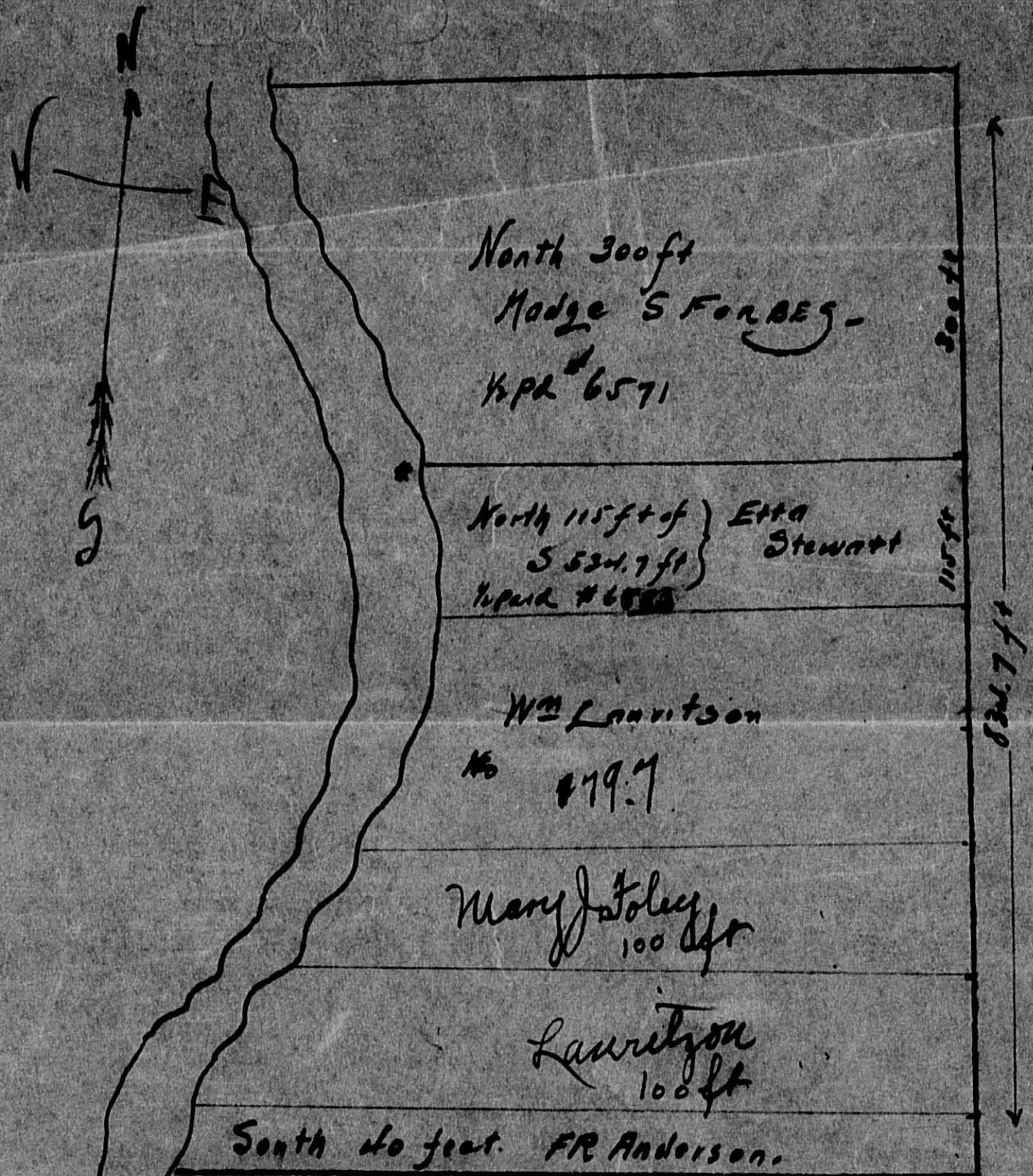
duplicate

PAID IN FULL OCT 30 1915

See Receipt

25479

HAMMERMILL
BLOCK



(From Here to Here is
South 524.7 ft of Block 18)

I think your receipts take in too much territory. The lot of Block 18 is 834.7 feet in length. I think you will have to force a balance on it. Do the best you can, and send me statement of what I have to pay. Lauritson should pay on all south of Etta Stewart lot and north of F. R. Anderson lot.

Forbes.

Tax List of Real Property in the Village of Vil. of Pine River

Cass County, Minnesota, for Taxes of the Year 1914

IN WHOSE NAME ASSESSED	TO WHOM TRANSFERRED	Sold for Taxes	SUBDIVISION	Sec. or Lot	Twp. or Block	Rng.	No. of Acres Acres 100ths	VALUATION Dollars	GENERAL TAXES Mills		Delinquent Road Tax Ditch No. Amount of Tax		State School Bonds	Ditch No.	SCHOOL DISTRICT		TOTAL TAXES	PAID	WHEN PAID Month Day Year	No. of Receipt	March Settlement	June Settlement	Penalty	November Settlement	Penalty	Collections to First Monday in January	Penalty	Delinquent on First Monday in January	REMARKS			
									State Sch. Tax	County Tax	Local Sch. Tax	Total			District No. Rate	District No. Rate														\$	cts.	\$
			<i>Dawes Fourth add</i>																													
			<i>Footings Brought Forward,</i>																													
<i>Daniel Westgreen</i>				<i>1</i>	<i>1</i>			<i>480</i>									<i>2736</i>	<i>✓</i>														
<i>"</i>				<i>2</i>	<i>"</i>																											
<i>J. H. Kimball</i>				<i>1</i>	<i>2</i>			<i>40</i>																								
<i>"</i>				<i>2</i>	<i>"</i>			<i>36</i>																								
<i>"</i>				<i>3</i>	<i>"</i>			<i>36</i>																								
<i>School Dist #1</i>				<i>1</i>	<i>3</i>			<i>36</i>																								
<i>"</i>				<i>2</i>	<i>"</i>			<i>36</i>																								
<i>"</i>				<i>3</i>	<i>"</i>			<i>36</i>																								
<i>J. H. Kimball</i>				<i>1</i>	<i>4</i>			<i>36</i>																								
<i>"</i>				<i>2</i>	<i>"</i>			<i>36</i>																								
<i>"</i>				<i>3</i>	<i>"</i>			<i>36</i>																								
<i>"</i>				<i>4</i>	<i>"</i>			<i>36</i>																								
<i>B. E. Wideman</i>				<i>5</i>	<i>"</i>			<i>680</i>																								
<i>Jay P. Brewer</i>				<i>1</i>	<i>5</i>			<i>36</i>																								
<i>L. Clarence M. Olson</i>				<i>2</i>	<i>"</i>			<i>36</i>																								
<i>"</i>				<i>3</i>	<i>"</i>			<i>36</i>																								
<i>School</i>				<i>{ 1-6 }</i>																												
<i>"</i>				<i>{ 2-3 }</i>																												
<i>"</i>				<i>{ 4-5 }</i>																												
			<i>Footings Carried Forward,</i>					<i>1632</i>																								

Tax List of Real Property in the Village of Vil. of Pine River

Cass County, Minnesota, for Taxes of the Year 1914

IN WHOSE NAME ASSESSED	TO WHOM TRANSFERRED	Sold for Taxes	SUBDIVISION	Sec. or Lot	Twp. or Block	Rng.	No. of Acres Acres 100ths	VALUATION Dollars	GENERAL TAXES Mills		Delinquent Road Tax		State School Bonds	Ditch No.	SCHOOL DISTRICT		TOTAL TAXES \$ cts.	PAID	WHEN PAID Month Day Year	No. of Receipt	March Settlement \$ cts.	June Settlement \$ cts.	Penalty \$ cts.	November Settlement \$ cts.	Penalty \$ cts.	Collections to First Monday in January \$ cts.	Penalty \$ cts.	Delinquent on First Monday in January \$ cts.	REMARKS									
									State Mills	County Mills	Ditch No.	Amount of Tax \$ cts.			District No.	District Rate Mills														District No.	District Rate Mills							
<i>Daves 4th add.</i>																																						
Footings Brought Forward,																																						
<i>J. H. Kimball</i>				<i>1</i>	<i>7</i>			<i>36</i>																														
<i>"</i>				<i>2</i>	<i>"</i>			<i>36</i>																														
<i>Betsy Ramsey</i>			<i>(E 1/2 of lot 2)</i>	<i>3</i>	<i>"</i>			<i>36</i>																														
<i>Nora Parton</i>				<i>1</i>	<i>8</i>			<i>36</i>																														
<i>"</i>				<i>2</i>	<i>"</i>			<i>36</i>																														
<i>Daves 5th Add.</i>																																						
<i>Old Rowick</i>				<i>1</i>	<i>1</i>			<i>300</i>																														
<i>J. E. Christian</i>				<i>2</i>	<i>"</i>			<i>300</i>																														
<i>Robt. E. Snell</i>				<i>3</i>	<i>"</i>			<i>40</i>																														
<i>Dell M. Patterson</i>				<i>1</i>	<i>2</i>			<i>320</i>																														
<i>"</i>			<i>W 1/2</i>	<i>2</i>	<i>"</i>																																	
<i>Joe D. Bowman</i>				<i>3</i>	<i>"</i>			<i>320</i>																														
<i>"</i>			<i>E 1/2</i>	<i>2</i>	<i>"</i>																																	
<i>J. P. Brewer</i>			<i>All of Block</i>	<i>x</i>	<i>3</i>			<i>80</i>																														
<i>"</i>					<i>4</i>			<i>80</i>																														
<i>J. G. Daves</i>					<i>5</i>			<i>80</i>																														
<i>J. H. Daves</i>			<i>Balance unplatted of</i>					<i>160</i>																														
<i>Footings Carried Forward.</i>																																						

2nd Half Paid Oct 1913
205 One-half Paid
205 One-half Paid Oct 1913
205 1/2 pd MAY 31 1915
205 1/4 pd OCT 31 1915
205 Paid

2nd Half Paid OCT 28 1914
1710 One-half Paid MAY 31 1915
1710 Paid
228 Paid

1824 Paid in Full MAY 22 1915

1824 Paid in Full MAR 12 1915

456 Paid in Full MAY 22 1915
456 One-half Paid OCT 31 1915
456 One-half Paid MAY 31 1915
456 One-half Paid OCT 30 1915
456 One-half Paid OCT 31 1915

712
7689

Tax List of Real Property in the Village of Vil. of Pine River

Cass County, Minnesota, for Taxes of the Year 1914

IN WHOSE NAME ASSESSED	TO WHOM TRANSFERRED	Sold for Taxes	SUBDIVISION	Sec. or Lot	Twp. or Block	No. of Acres Acres 100ths	VALUATION Dollars	GENERAL TAXES		Delinquent Road Tax Amount of Tax	State School Bonds	Ditch No.	SCHOOL DISTRICT		TOTAL TAXES	PAID	WHEN PAID Month Day Year	No. of Receipt	March Settlement	June Settlement	Penalty	November Settlement	Penalty	Collections to First Monday in January	Penalty	Delinquent on First Monday in January	REMARKS		
								Mills State State Sch'l County Town Local Sch'l Total	Ditch No.				District No. Rate Mills	District No. Rate Mills															
Footings Brought Forward,																													
Amarillo Dames	J.H. Kimball		unsurveyed part Lot 7	31	29	8 1/2	480								27.36		2nd Half Paid MAY 31 1915 82.19 1st Half Paid MAY 31 1915 65.68												
John A. Johnson			part of same Lot 7	31	29	4	376								21.43		paid in Full OCT 4 - 1915 72.00												
John G. Dames			part of same Lot 7	6	29	32	1166																						
A.E. Stein				1	1		280								15.96		2nd Half Paid OCT 22 1915 758.7 One-half Paid MAY 31 1915 38.13												
Adam Fox				3	1		160								9.12		2nd Half Paid OCT 27 1914 7893 1st Half Paid MAY 31 1915 5453												
Henry Seef				4	1		340								19.38		2nd Half Paid OCT 30 1915 8521 One-half Paid MAY 31 1915 6116												
Footings Carried Forward																													
							4116								23461														

p 14
p 16 only

~~162~~
14136 J. Walden Jr

Tax List of Real Property in the Village of VII. of Pine River

Cass County, Minnesota, for Taxes of the Year 1914

IN WHOSE NAME ASSESSED	TO WHOM TRANSFERRED	Sold for Taxes	SUBDIVISION	Sec. or Lot	Twp. or Block	Rng.	No. of Acres		VALUATION	GENERAL TAXES			Delinquent Road Tax	State School Bonds	Ditch No.	SCHOOL DISTRICT		TOTAL TAXES	PAID	WHEN PAID	No. of Receipt	March Settlement	June Settlement	Penalty	November Settlement	Penalty	Collections to First Monday in January	Penalty	Delinquent on First Monday in January	REMARKS
							Acres	100ths		Mills	Ditch No.	Amount of Tax				District No.	District Rate													
Footings Brought Forward,																														
<i>Original plat subdivided into Block 1 & 2 of 19</i>																														
<i>Webber & Hill</i>	✓			1	1				20									114	PAID IN FULL	MAY 31 1915										
"	✓			2	"				20									114	PAID IN FULL	MAY 31 1915	570		228							
<i>Herman Constant</i>	✓			3	"				20									114	PAID IN FULL	MAY 31 1915	5770		114							
<i>Webber & Hill</i>	✓			4	"				20									114	PAID IN FULL	MAY 31 1915										
"	✓			5	"				20									114	PAID IN FULL	MAY 31 1915										
<i>Geo. Moulster</i>	✓			6	"				20									114	PAID IN FULL	MAY 31 1915	5700		570							
<i>Webber & Hill</i>	✓			7	"				20									114	PAID IN FULL	MAY 31 1915										
<i>W. A. Spurrer</i>	✓			1	2				10									57	2nd Half Paid	OCT 30 1914										
"	✓			2	"				10									57	2nd Half Paid	OCT 30 1915	570.24									
"	✓			3	"				10									57	2nd Half Paid	MAY 31 1915	5771		154		153					
"	✓			4	"				24									57	2nd Half Paid	OCT 30 1915										
<i>Geo. Moulster</i>	✓			5	"				10									136	no-half Paid.											
"	✓			6	"				10									57	✓											57
<i>Webber & Hill</i>	✓			7	"				10									57	✓											57
<i>Jahn & Allen</i>	✓			8	"				24									57	✓											57
<i>Herman C. Constant</i>	✓			9	"				10									136	Paid in full	MAY 12 1915	3172		136							
									278									57	PAID IN FULL	MAY 31 1915	5770		57							
Footings Carried Forward.																														
																		1583												

Tax List of Real Property in the Village of Vil. of Pine River

Cass County, Minnesota, for Taxes of the Year 1914

IN WHOSE NAME ASSESSED	TO WHOM TRANSFERRED	Sold for Taxes	SUBDIVISION	Sec. or Lot	Twp. or Block	No. of Acres Acres 100ths	VALUATION Dollars	GENERAL TAXES		Delinquent Road Tax		State School Bonds	Ditch No.	SCHOOL DISTRICT		TOTAL TAXES	PAID	WHEN PAID Month Day Year	No. of Receipt	March Settlement	June Settlement	Penalty	November Settlement	Penalty	Collections to First Monday in January	Penalty	Delinquent on First Monday in January	REMARKS		
								Mills	Ditch No.	Amount of Tax	District No.			District Rate	District Rate														District Rate	
<i>Footings Brought Forward,</i>																														
<i>W. A. Spurrer</i>					<i>10 2</i>		<i>10</i>																							
<i>"</i>					<i>11 "</i>		<i>10</i>																							
<i>"</i>					<i>12 "</i>		<i>10</i>																							
<i>"</i>					<i>13 "</i>		<i>10</i>																							
<i>"</i>					<i>14 "</i>		<i>10</i>																							
<i>"</i>					<i>15 "</i>		<i>10</i>																							
<i>"</i>					<i>16 "</i>		<i>10</i>																							
<i>Footings Carried Forward,</i>							<i>70</i>																							
							<i>Total 46306.</i>									<i>399</i>														
																<i>Total 2639.34</i>														

57 PAID IN FULL
57 PAID IN FULL
57 PAID IN FULL
57 PAID IN FULL
57 PAID IN FULL MAY 31 1915 100
57 PAID IN FULL
57 PAID IN FULL

399

Total 2639.34