

Auditor's Office, Cass County, Minnesota

I J. C. Byrne Auditor of Cass County, and State of
Minnesota, do hereby certify that the following is a correct list of the Taxes levied on the Real and Personal Property in the Village
of Oneida for the year 1914 (L. S.)

WITNESS my hand and official seal, the 4th day of January 1915
J. C. Byrne County Auditor

Treasurer's Office, Cass County, Minnesota

RECEIVED this the first Monday (being the 4th day) of January, A. D. 1915, of G. A. Bacon
Auditor of Cass County, Minnesota, the Tax List of all Taxable Real and Personal Property in the Village of Oneida
in said County of Cass for the year A. D. 1914, as specified above, and amounting to Thirty Nine Hundred Eighty Seven ⁷³/₁₀₀ Dollars.

H. J. McKee
Treasurer of Cass County.

Tax List of Real Property in the Village of Vil. of Pine River

Cass County, Minnesota, for Taxes of the Year 1914

IN WHOSE NAME ASSESSED	TO WHOM TRANSFERRED	Sold for Taxes	SUBDIVISION	Sec. or Lot	Twp. or Block	Rng.	No. of Acres		VALUATION	GENERAL TAXES			Delinquent Road Tax		State School Bonds	Ditch No.	SCHOOL DISTRICT		TOTAL TAXES	PAID	WHEN PAID	No. of Receipt	March Settlement	June Settlement	Penalty	November Settlement	Penalty	Collections to First Monday in January	Penalty	Delinquent on First Monday in January	REMARKS	
							Acres	100ths		State	County	Legal	Ditch No.	Amount of Tax			District No.	District Rate														Month
<i>Original Plat</i>																																
<i>Footings Brought Forward,</i>																																
<i>Mrs. J. G. Dawes</i>	<i>25 x 115 ft (C. B. Dale - W. 25 x 9.5 ft)</i>			1	4				2000																							
<i>"</i>	<i>"</i>			2	"																											
<i>Alice Lief</i>	<i>vill Pine River rear 25 ft.</i>			3	"				1200																							
<i>"</i>	<i>"</i>			4	"																											
<i>Alice Lief</i>				5	"				250																							
<i>Geo. W. Ruscoe</i>				6	"				520																							
<i>Nels Holman</i>	<i>Pete Lillstrom</i>			7	"				240																							
<i>Nels Holman</i>				8	"				480																							
<i>Bank of Pine River</i>				9	"				1000																							
<i>Mrs. J. G. Dawes</i>				1	2				1600																							
<i>"</i>				2	"																											
<i>P. Behler</i>				3	"																											
<i>"</i>				4	"				80																							
<i>F. P. Silson</i>	<i>J. A. Bark</i>			5	"																											
<i>"</i>	<i>"</i>			6	"				80																							
<i>"</i>				7	"																											
<i>Alfred Magnusson</i>				8	"				40																							
<i>Mrs. J. G. Dawes</i>				9	"				80																							
<i>"</i>				10	"																											
<i>"</i>				11	"				80																							
<i>Footings Carried Forward</i>									7650																							

OCT 20 1915 5323

MAY 31 1915 5028

MAY 31 1914 4667

OCT 25 1914 7708

APR 10 1915 2405

OCT 30 1915 8739

MAY 31 1915 6131

OCT 30 1915 8395

MAY 31 1915 5974

OCT 30 1915 5067

MAY 31 1915 5405

OCT 30 1915 8552

MAY 28 1915 4422

MAY 31 1915 5652

OCT 30 1915 8323

MAY 31 1915 5028

OCT 22 1915 7584

MAR 4 1915 1934

MAY 31 1915 4823

MAY 15 1915 3327

OCT 30 1915 8323

OCT 30 1915 5028

OCT 30 1915 4560

MAY 31 1915 5028

Tax List of Real Property in the Village of VII. of Pine River

Cass County, Minnesota, for Taxes of the Year 1914

IN WHOSE NAME ASSESSED	TO WHOM TRANSFERRED	Sold for Taxes	SUBDIVISION	Sec. or Lot	Twp. or Block	Rng.	No. of Acres		VALUATION	GENERAL TAXES			Delinquent Road Tax		State School Bonds	Ditch No.	SCHOOL DISTRICT		TOTAL TAXES	PAID	WHEN PAID	No. of Receipt	March Settlement	June Settlement	Penalty	November Settlement	Penalty	Collections to First Monday in January	Penalty	Delinquent on First Monday in January	REMARKS							
							Acres	100ths		Mills	Mills	Ditch No.	Amount of Tax	District No.			District Rate	District No.														District Rate	Month	Day	Year			
			Original Plat						Dollars	\$	cts.	\$	cts.	\$	cts.	\$	cts.	\$	cts.	\$	cts.	Month	Day	Year	\$	cts.	\$	cts.	\$	cts.	\$	cts.	\$	cts.	\$	cts.		
			Footings Brought Forward,																																			
Mrs. J. G. Dawes				12	2				200																													
A. Rounds				13																																		
"				14					240																													
Mrs. J. G. Dawes				15																																		
"				16																																		
"				17					120																													
"				18																																		
Herman H. Siltanen				19					40																													
Joy R. Brewer	Henry S. McBride			1	3				200																													
"	"			2																																		
Mrs. J. G. Dawes				3																																		
"				4																																		
"				5					160																													
"				6																																		
Lucy Bamson	Mary Morey			1	4																																	
"	"			2					200																													
Ol Johnson				3					200																													
"				4																																		
Elizabeth Stutson				5					40																													
			Footings Carried Forward,						1400																													

2nd Half Paid OCT 30 1915 8323
One-half Paid. MAY 31 1915 5028

2nd Half Paid OCT 6 1915 7223
One-half Paid. MAY 3 1915 2860

2nd Half Paid OCT 30 1915 8323
One-half Paid. MAY 31 1915 5028

228
2nd Half Paid OCT 30 1915 8209
One-half Paid MAY 31 1915 5607

2nd Half Paid OCT 30 1915 8323
One-half Paid. MAY 31 1915 5028

2nd Half Paid OCT 22 1915 7686
One-half Paid MAY 27 1915 4294

1140 Paid 4307

228 paid in Full MAY 17 1915 3340

7980

Tax List of Real Property in the Village of village of Pine River

Cass County, Minnesota, for Taxes of the Year 1914

IN WHOSE NAME ASSESSED	TO WHOM TRANSFERRED	Sold for Taxes	SUBDIVISION	Sec. or Lot	Twp. or Block	Rng.	No. of Acres		VALUATION	GENERAL TAXES			Delinquent Road Tax		State School Bonds	Ditch No.	SCHOOL DISTRICT		TOTAL TAXES	PAID	WHEN PAID	No. of Receipt	March Settlement	June Settlement	Penalty	November Settlement	Penalty	Collections to First Monday in January	Penalty	Delinquent on First Monday in January	REMARKS								
							Acres	100ths		State Sch'l	County	Town	Local Sch'l	Total			Mills	Ditch No.														Amount of Tax	District No.	District Rate	District Rate	District Rate			
									Dollars	\$	cts.	\$	cts.	\$	cts.	\$	cts.	\$	cts.	\$	cts.	Month	Day	Year	\$	cts.	\$	cts.	\$	cts.	\$	cts.	\$	cts.					
<i>Original Plot</i>																																							
<i>Footings Brought Forward,</i>																																							
<i>Martin Haugen (deceased)</i>	<i>Lena Haugen</i>			6	4																																		
<i>Lena</i>				7	"				300																														
<i>W. H. Spooner</i>	<i>L. H. Peck</i>			1	5				240																														
<i>Geo. W. Ruscol</i>				2	"																																		
<i>Geo. W. Ruscol</i>				3	"				260																														
<i>A. J. Lindens</i>	<i>1/2 lots - Peter P. Hanson</i>			4	"																																		
<i>P. P. Hanson</i>	<i>Peter Lillstrom</i>			5	"				240																														
<i>P. P. Hanson</i>				6	"				.80																														
<i>Myrtle Lillstrom</i>				7	"																																		
<i>Myrtle Lillstrom</i>				8	"				300																														
<i>A. J. Lindens</i>				9	"																																		
<i>A. J. Lindens</i>				10	"				300																														
<i>Otto Anderson</i>				11	"																																		
<i>Otto Anderson</i>				12	"				300																														
<i>S. A. Curtis</i>				13	"																																		
<i>S. A. Curtis</i>				14	"				320																														
<i>S. A. Curtis</i>				15	"																																		
<i>S. A. Curtis</i>				16	"																																		
<i>S. A. Curtis</i>				17	"																																		
<i>Footings Carried Forward,</i>									2340																														
										13338																													

Tax List of Real Property in the Village of VII. of Pine River

Cass County, Minnesota, for Taxes of the Year 1914

IN WHOSE NAME ASSESSED	TO WHOM TRANSFERRED	Sold for Taxes	SUBDIVISION	Sec. or Lot	Twp. or Block	No. of Acres Acres 100th	VALUATION Dollars	GENERAL TAXES			Delinquent Road Tax		State School Bonds	Ditch No.	SCHOOL DISTRICT		TOTAL TAXES	PAID	WHEN PAID Month Day Year	No. of Receipt	March Settlement	June Settlement	Penalty	November Settlement	Penalty	Collections to First Monday in January	Penalty	Delinquent on First Monday in January	REMARKS	
								Mills State Sch'l County Town Local Sch'l Total	Ditch No.	Amount of Tax	District No. Rate Mills	District No. Rate Mills																		
Original Plat																														
Footings Brought Forward,																														
Lavern Hardy				1	6		10										57	PAID IN FULL												
"				2	"		10										57	PAID IN FULL												
"				2	"		10										57	PAID IN FULL												
"				4	"		10										57	PAID IN FULL												
"				5	"		10										57	PAID IN FULL												
"				6	"		20										114	PAID IN FULL												
"				7	"		20										114	PAID IN FULL												
Mary V. Smith				8	"												1824	PAID IN FULL	APR 28 1915	5741										
"				9	"		320										1824	PAID IN FULL	APR 28 1915	5741										
Reuben Spencer				10	"		320										1824	PAID IN FULL	MAY 31 1915	5102										
"				11	"		320										912	PAID IN FULL	MAY 31 1915	5652										
1st. State Bank of P. River			Front 50 ft of Lot	13	"		160										672	PAID IN FULL	MAY 31 1915	5652										
Webster Hill			Balance of Lot 13 + all of	14	"		118										672	PAID IN FULL												
Webster Hill				15	"		400										1280	PAID			4674									
Michael Smith			21 ft. of Lot	16	"												1140	PAID IN FULL	APR 28 1915	5741										
J. J. Linden	P.N. Kruckow		East 4 ft of Lot 16 + West 8 ft of Lot	17	"		200										1140	PAID IN FULL	MAY 19 1915	3537										
James C. Geary	First St. Bk. Pine River		East 17 ft of	17	"		200										3340	PAID IN FULL	APR 17 1915	2537										
John J. Allen	R.C. Spencer			19	"		106										604	PAID IN FULL	MAY 31 1915	5102										
Footings Carried Forward,																														
							2500																							

Costs 1749 of Lot 16
Paid by G. W. Allen
Jan 24, 1915

Tax List of Real Property in the Village of VII. of Pine River

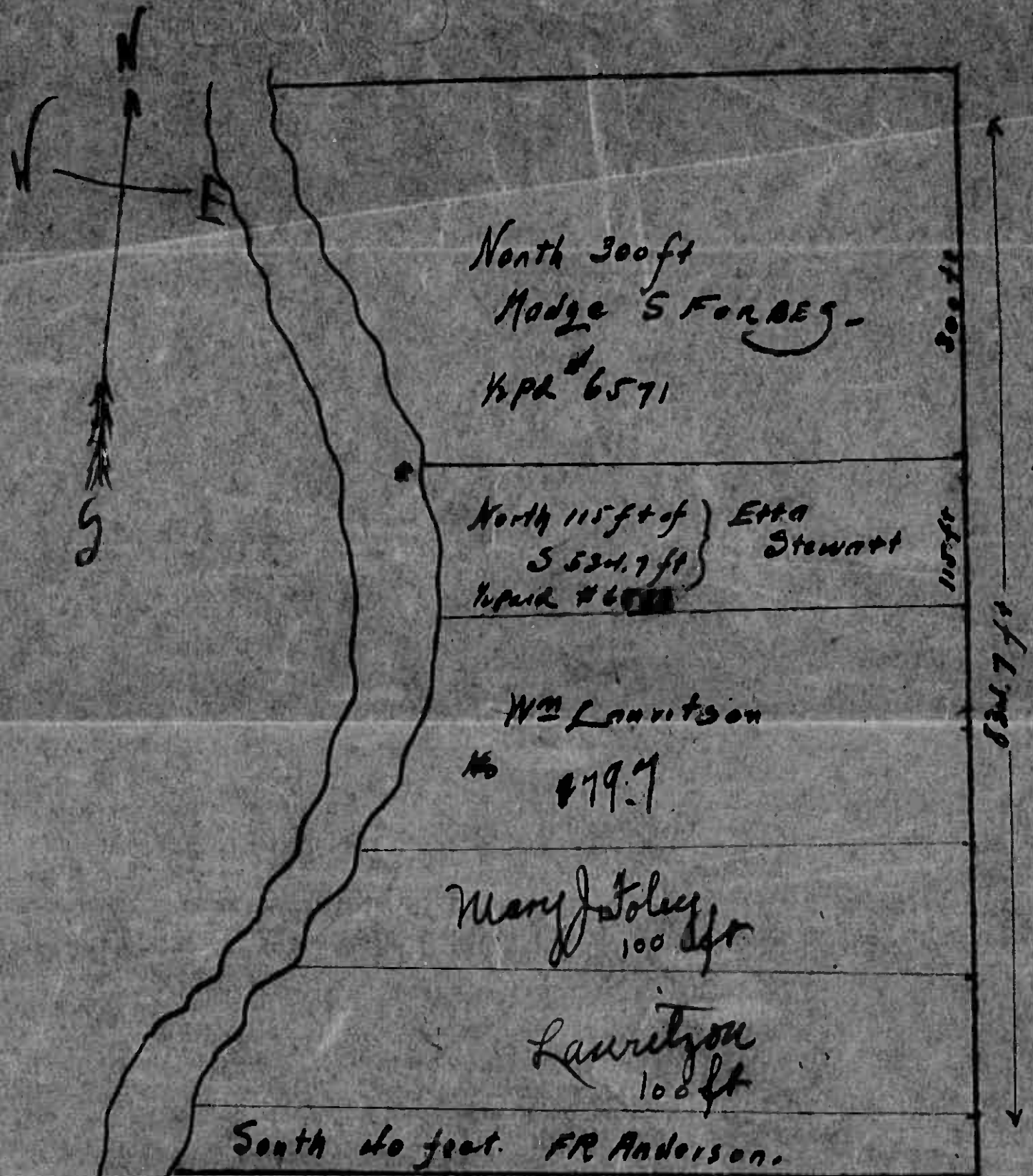
Cass County, Minnesota, for Taxes of the Year 1914

IN WHOSE NAME ASSESSED	TO WHOM TRANSFERRED	Sold for Taxes	SUBDIVISION	Sec. or Lot	Twp. or Block	Rng.	No. of Acres		VALUATION	GENERAL TAXES			Delinquent Road Tax		State School Bonds	Dist. No.	SCHOOL DISTRICT		TOTAL TAXES	PAID	WHEN PAID	No. of Receipt	March Settlement	June Settlement	Penalty	November Settlement	Penalty	Collections to First Monday in January	Penalty	Delinquent on First Monday in January	REMARKS					
							Acres	100ths		State	Mills	County	Local	Total			Dilch No.	Amount of Tax														District No.	District Rate	District Rate	Month	Day
Mudge S. Forbes	Wm. Soley Lauritzen		Original Plat						80										56		PAID IN FULL	AUG 14 1915														
									120										684		2nd Half Paid	OCT 30 1915														
J. H. Stewart	Etta Stewart		Block						46										262		One-half Paid	MAY 31 1915														
Wm. Lauritzen	Mary J. Foley		Block																																	
Will G. Stewart			Block																																	
Wm. Lauritzen	F. R. Anderson		Block																																	
H. S. Satter	Wm. Soley Lauritzen		Block						100																											
" V. E. Davies			Part						300																											
Wm. Jenkins	Wm. H. Jenkins		S. Park Lot						320																											
J. H. Stewart	Wm. H. Jenkins		" "						36																											
			" "						72																											
Emma S. Davis	James S. Davis		James S. Davis						400																											
Galdie Cromett			West 1/2						40																											
Mary H. Gilbert			South 1/2 of Lot 1 + Lot 2						400																											
Galdie Cromett			North 1/2 " " 4 + "						400																											
J. J. Allen	Frances M. Allen								480																											
Mildred Arwig									200																											
E. B. Dahl									280																											
Jos. Zigmund									400																											
Lloyd Curtis									80																											
J. H. Kimball	E. E. Martin								80																											
E. E. Martin									100																											
									4114																											

25479

See Receipt

WATERMILL
ROAD



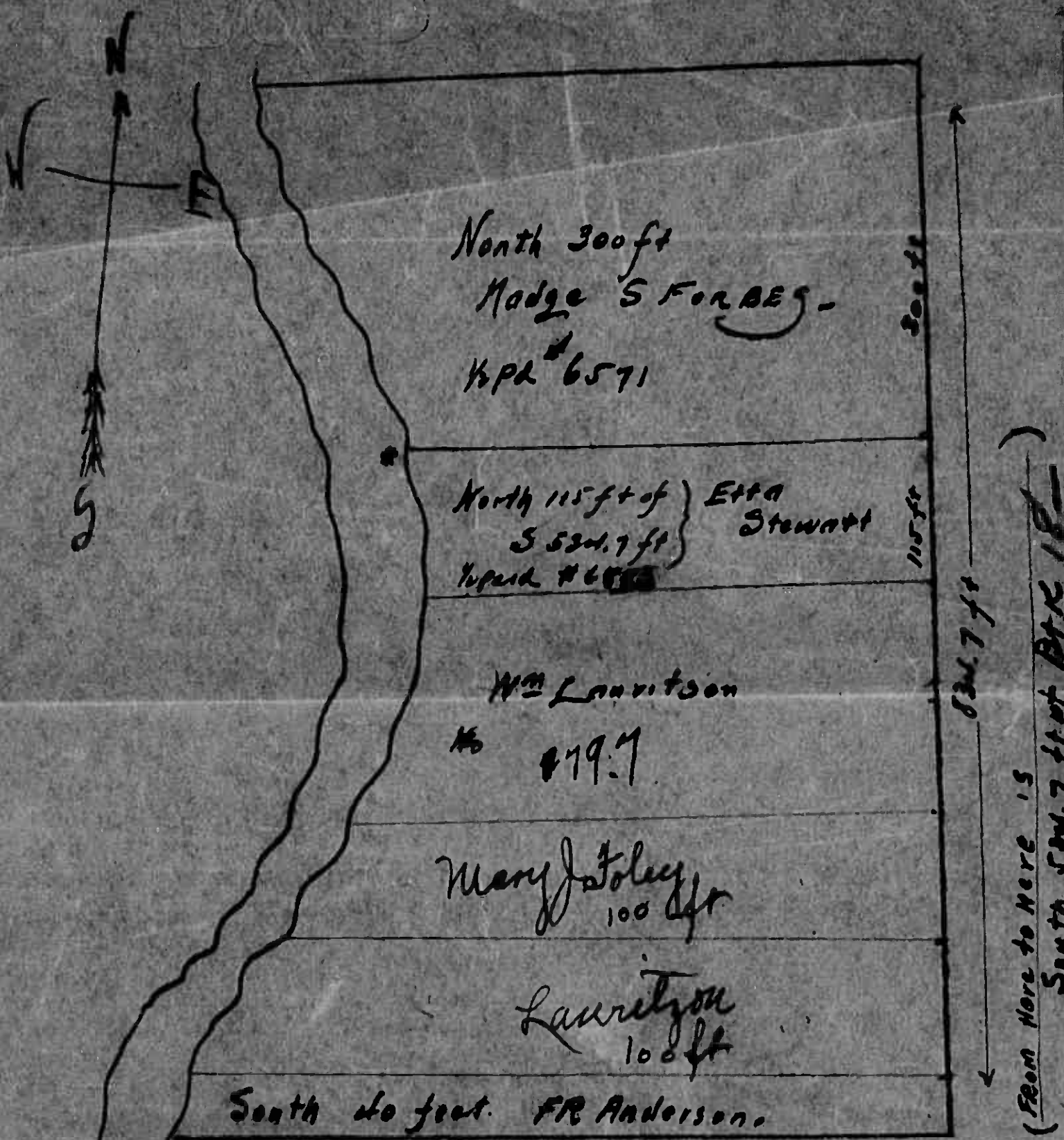
(From Here to Here is
South 524.7 ft of Plat 18-)

I think your road is in too much territory.
The lot of Block 18 is 524.7 feet in length. I think
you will have to force a balance on it. In the best
you can, and send me statement of what I have to pay.
Lauritson should pay on all south of Etta Stewart
lot and north of F. R. Anderson lot.

Forbes.

WATERMILL
ROAD

W. M. NE. S. MILL
BOLD



I think your receipts take in too much territory. The lot of Block 18 is 524.7 feet in length. I think you will have to force a balance on it. In the best you can, and send me statement of what I have to pay. Lauritson should pay on all south of Etta Stewart lot and north of F. R. Anderson lot.

Forbes.

BOLD

Tax List of Real Property in the Village of vil. of Pine River

Cass County, Minnesota, for Taxes of the Year 1914

IN WHOSE NAME ASSESSED	TO WHOM TRANSFERRED	Sold for Taxes	SUBDIVISION	Sec. or Lot	Twp. or Block	No. of Acres Acres 100ths	VALUATION Dollars	GENERAL TAXES			Delinquent Road Tax		State School Bonds	Dist. No.	SCHOOL DISTRICT		TOTAL TAXES	PAID	WHEN PAID Month Day Year	No. of Receipt	March Settlement	June Settlement	Penalty	November Settlement	Penalty	Collections to First Monday in January	Penalty	Delinquent on First Monday in January	REMARKS	
								Mills			Delinquent No.	Amount of Tax			No. Rate	No. Rate														
								State	State Sch'l	County																				
<i>James Second Add</i>																														
<i>Footings Brought Forward,</i>																														
<i>J. E. Geary</i>				<i>1</i>	<i>4</i>		<i>600</i>									<i>3420</i>	<i>One-half Paid.</i>	<i>MAY 31 1915</i>												
<i>Geary & Will</i>				<i>2</i>	<i>"</i>		<i>80</i>									<i>456</i>	<i>One-half Paid.</i>	<i>MAY 31 1915</i>	<i>6016</i>		<i>4166</i>									
<i>F. D. Will</i>				<i>3</i>	<i>"</i>		<i>80</i>									<i>456</i>	<i>One-half Paid.</i>	<i>MAY 31 1915</i>												
<i>F. R. Anderson</i>				<i>1</i>	<i>5</i>		<i>600</i>									<i>3420</i>	<i>2nd Half Paid</i>	<i>OCT 28 1914</i>	<i>4946</i>											
<i>R. Ziehl</i>				<i>2</i>	<i>"</i>		<i>80</i>									<i>456</i>	<i>1st Half Paid</i>	<i>MAY 31 1915</i>	<i>3780</i>		<i>1710</i>		<i>1710</i>							
<i>Wm. M. Will</i>				<i>3</i>	<i>"</i>		<i>400</i>									<i>456</i>	<i>Paid in Full and Half Paid</i>	<i>FEB 18 1915</i>	<i>877</i>	<i>456</i>										
<i>W. H. Ellwood</i>				<i>1</i>	<i>6</i>		<i>400</i>									<i>2280</i>	<i>2nd Half Paid</i>	<i>OCT 28 1914</i>	<i>7640</i>											
<i>Chas. E. Webster & H. H. Will</i>			<i>1/2 of Lot 4 and Lot</i>	<i>3</i>	<i>"</i>		<i>280</i>									<i>1396</i>	<i>1st Half Paid</i>	<i>MAY 31 1915</i>	<i>5207</i>		<i>798</i>		<i>798</i>							
<i>Pearl Vanps.</i>			<i>" " 4 " "</i>	<i>5</i>	<i>"</i>		<i>200</i>									<i>1140</i>	<i>Paid in Full</i>	<i>APR 19 1915</i>	<i>2566</i>		<i>1140</i>									
<i>Footings Carried Forward,</i>																														
							<i>2720</i>																							
															<i>15504</i>															

Tax List of Real Property in the Village of Village of Pine River

Cass County, Minnesota, for Taxes of the Year 1914

IN WHOSE NAME ASSESSED	TO WHOM TRANSFERRED	Sold for Taxes	SUBDIVISION	Sec. or Lot	Twp. or Block	Rng.	No. of Acres		VALUATION	GENERAL TAXES		Delinquent Road Tax		State School Bonds	Ditch No.	SCHOOL DISTRICT		TOTAL TAXES	PAID	WHEN PAID	No. of Receipt	March Settlement	June Settlement	Penalty	November Settlement	Penalty	Collections to First Monday in January	Penalty	Delinquent on First Monday in January	REMARKS
							Acres	100ths		Mills	Mills	Ditch No.	Amount of Tax			District No.	District Rate													
<i>Dances 4th add.</i>																														
Footings Brought Forward,																														
<i>J. H. Kimball</i>									36									205	One-half Paid											
"									36									205	One-half Paid											
<i>Betsy Ramsey</i>			<i>(E 1/2 of Lot 2)</i>						36									205	1/2 Pd											
<i>Nora Parton</i>									36									205	1/2 Pd											
"									36									205	paid											
<i>Dances 5th add.</i>																														
<i>Old Rowick</i>									300									1710	2nd Half Paid											
<i>J. E. Christian</i>									300									1710	One-half Paid											
<i>Robt. E. Snell</i>									40									228	paid											
<i>Dell M. Patterson</i>									320									1824	paid in full											
"			<i>W 1/2</i>						320									1824	paid in full											
<i>Geo. D. Bowman</i>									80									456	paid in full											
<i>J. P. Brewer</i>			<i>all of Block</i>						80									456	One-half Paid											
"									80									456	One-half Paid											
<i>J. G. Dames</i>									80									456	One-half Paid											
<i>J. H. Dames</i>			<i>balance unplattd of</i>						160									<i>See attached map</i>												
Footings Carried Forward,																														
1700																														

Tax List of Real Property in the Village of Vil. of Pine River

Cass County, Minnesota, for Taxes of the Year 1914

IN WHOSE NAME ASSESSED	TO WHOM TRANSFERRED	Sold for Taxes	SUBDIVISION	Sec. or Lot	Twp. or Block	Rng.	No. of Acres Acres 100ths	VALUATION Dollars	GENERAL TAXES		Delinquent Road Tax		State School Bonds	Ditch No.	SCHOOL DISTRICT		TOTAL TAXES	PAID	WHEN PAID Month Day Year	No. of Receipt	March Settlement	June Settlement	Penalty	November Settlement	Penalty	Collections to First Monday in January	Penalty	Delinquent on First Monday in January	REMARKS			
									Mills	Mills	Ditch No.	Amount of Tax			District No.	District Rate														District No.	District Rate	
Footings Brought Forward																																
Amanda Daves	J.H. Kimball		unsurveyed part Lot 7	31	138	29	8 1/2	480									27.36		2nd Half Paid MAY 31 1915	82.69												
John A. Johnson			part of same Lot 7	31	138	29	4	376									21.43	paid in Full	OCT 4 - 1915	72.00												
John G. Daves			part of same Lot 7	31	138	29	32	1168																								
A.E. Stein				1				280									15.96		2nd Half Paid OCT 22 1915	758.7												
Adam Fox				3				160									9.12		2nd Half Paid MAY 31 1915	7893												
Henry Seef				4				340									19.38		2nd Half Paid OCT 30 1915	8521												
Footings Carried Forward								4116																								
																	23461															

n 14 p 16 only

Footings Brought Forward
unsurveyed part Lot 7
Sec. 31 T. 138 R. 29. S. 8 1/2
part of same Lot 7
West of Ry. Track

part of same Lot 7
+ Ry. Track
with adms.

2nd Half Paid
Oct 30 1915 82.69
1st Half Paid
MAY 31 1915 65.68

21.43 paid in Full
OCT 4 - 1915 72.00

John Walker

2nd Half Paid
OCT 22 1915 758.7
One-half Paid
MAY 31 1915 38.13

2nd Half Paid
OCT 27 1914 7893
1st Half Paid
MAY 31 1915 5453

2nd Half Paid
OCT 30 1915 8521
One-half Paid
MAY 31 1915 6116

Tax List of Real Property in the Village of Vil. of Pine River

Cass County, Minnesota, for Taxes of the Year 1914

IN WHOSE NAME ASSESSED	TO WHOM TRANSFERRED	Sold for Taxes	SUBDIVISION	Sec. or Lot	Twp. or Block	No. of Acres	VALUATION	GENERAL TAXES		Delinquent Road Tax	State School Bonds	Ditch No.	SCHOOL DISTRICT		TOTAL TAXES	PAID	WHEN PAID	No. of Receipt	March Settlement	June Settlement	Penalty	November Settlement	Penalty	Collections to First Monday in January	Penalty	Delinquent on First Monday in January	REMARKS													
								State Sch. Mills	Ditch No.				District No.	District Rate																										
							Dollars	\$	cts.	\$	cts.	\$	cts.	\$	cts.	Month	Day	Year	\$	cts.	\$	cts.	\$	cts.	\$	cts.	\$	cts.												
<i>Footings Brought Forward,</i>																																								
<i>W. A. Spurrier</i>					<i>10 2</i>		<i>10</i>																																	
"					<i>11 "</i>		<i>10</i>																																	
"					<i>12 "</i>		<i>10</i>																																	
"					<i>13 "</i>		<i>10</i>																																	
"					<i>14 "</i>		<i>10</i>																																	
"					<i>15 "</i>		<i>10</i>																																	
"					<i>16 "</i>		<i>10</i>																																	
<i>Footings Carried Forward</i>							<i>70</i>																																	
							<i>Total 46306</i>																																	
															<i>399</i>																									
															<i>Total 263734</i>																									

57 PAID IN FULL
57 PAID IN FULL
57 PAID IN FULL
57 PAID IN FULL
57 PAID IN FULL
57 PAID IN FULL
57 PAID IN FULL

MAY 31 1915 700

399