

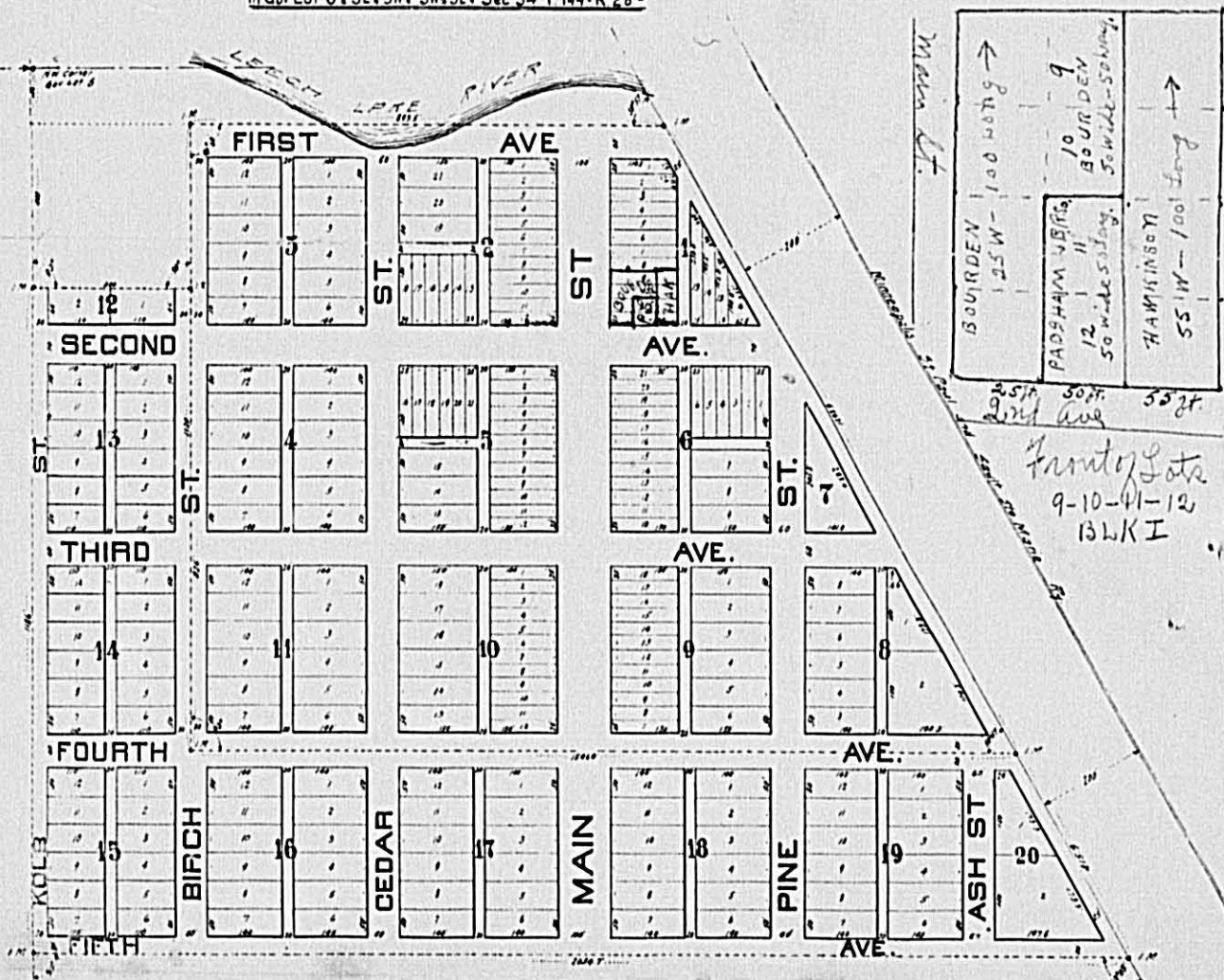
TAX LIST
1921
Village of Federal Dam
CASS COUNTY

PLAT OF **FEDERAL DAM**

CASS Co. MINN.

In Gov Lot 6 & SE 1/4 SW 1/4 SW 1/4 SE 1/4 Sec 34 T 144° R 28 W

130 ft East + West.



FEDERAL DAM

Splendidly located for commercial advantages near the Government Dam at the outlet of Leech Lake. This town is an important division point on the Soo Line and will grow rapidly to commercial importance.

For further information apply to

J. M. BEST,

Townsite Agent,

"SOO LINE," MINNEAPOLIS, MINN.

Or Local Townsite Agent,
FEDERAL DAM, MINN.

Auditor's Office, Cass County, Minnesota.

I, C. D. BACON, Auditor of Cass County and State of Minnesota, do hereby certify that the following is a correct list of the taxes levied on the Real and Personal Property in the Village of Federal Dam for the year 1921.

Witness my hand and official seal this 31st day of December, 1921.

(SEAL)

C. D. Bacon
County Auditor.

Treasurer's Office, Cass County, Minnesota.

Received this, the first Monday (being the 2nd day of January, A. D. 1922) of C. D. BACON, Auditor of Cass County, Minnesota, the Tax List of all taxable Real and Personal Property in the Village of Federal Dam, in said County for the year A. D. 1921, as specified above, and amounting to \$4,894.44 DOLLARS.

W. T. Keown
County Treasurer.

Office of County Treasurer, Cass County, Minnesota.

To C. D. BACON, County Auditor.

Sir: I herewith return to you the Tax List for the Village of Federal Dam in said Cass County, for the year 1921, heretofore received from you. I certify that I have compared the same with the duplicate receipts in your office, and have written opposite the amount of each tax so received the words "One Half Paid," or "Paid in Full," as the case may be, and the number of my receipt given in discharge of said tax, and each tract or lot of Real Property against which the taxes remain unpaid is delinquent for said year.

W. T. Keown
County Treasurer.

Auditor's Office, Cass County, Minnesota.

I hereby certify that on the first Monday in January, 1923, I received of W. T. KEOWN, County Treasurer, the Tax List of the Village of Federal Dam in said County of Cass for the year 1921, and that I have compared the said list with the statements received for by said Treasurer, which are on file in my office, and that each tract or lot of Real Property therein against which the taxes, or any part thereof, remains unpaid, are delinquent for said year.

C. D. Bacon
By E. L. Olson, Deputy
County Auditor.

TABULAR SCHEDULE OF VALUATIONS

LEVIED IN THE Village OF Federal Dam

No. of School Dist.	Total Acres	VALUATION BY SCHOOL DISTRICTS					RATE OF STATE TAXES					RATE OF COUNTY TAXES										RATE OF TOWN TAXES									
		Av. Value per acre	Value of Lands other than Town Lots including Structures	Value of Town and City Lots including Structures	Personal Property	Total Value of all Property Except Money and Credits	State Rev.	State Sch'l	Tchr. Ins. & Ret.	Total Rate of State Tax	Co. Rev.	Co. R&B	Poor	Bond & Int.	Skg.	Co. Bldg.	Total Rate of Co. Tax	Town Rev.	Town R&B	Town Poor	Town I Mill Drag	Town State Loan	Town Bldg.	Town Fire Patrol	Total Rate of Twn. Taxes						
Amory	653.45	116.23	10865	31915	15646	245	123	.05	1.23	5.	8.92	122	6.05	7.13	25	29.95	20.									1.37	21.37				
Total																															

RATES AND TAXES

COUNTY OF CASS, STATE OF MINNESOTA.

RATE OF SCHOOL TAXES							Total Rate of all Taxes	TAXES LEVIED				
School Local 1 Mill	Sch'l Spec'l	Sch'l State Loan	Total Rate of Sch'l Taxes		Total Rate of all Taxes	Mills		LOCAL 1 MILL AND SPECIAL SCHOOL TAXES BY DISTRICTS			ALL OTHER TAXES	
1 Mill	Mills	Mills	Mills	Mills			Mills	Local 1 Mill	Special	State Loan	Total School Tax	FUNDS
1.	25	3.	2.	31.	8658							
										State Revenue		16646
										State School		6440
										State Teachers Ins. & Ret.		252
										County Revenue		28213
										County Road and Bridge		50332
										County Poor		6854
										Bond and Interest		34307
										Sinking Building		41925
										Maintenance		1411
												6094
										Town Revenue		112852
										Town Road and Bridge		
										Town Poor		
										Town 1 Mill Drag		
										Town State Loan		7730
										Town Building		
										Town Fire Patrol		
										School Local 1 Mill		5643
										School Special		141065
										School State Loan		16928
										School Interest		11285
										S. R. H. & H. S.		942
										TOTALS		489479

Valuation	Amt. of Tax
17128	5135

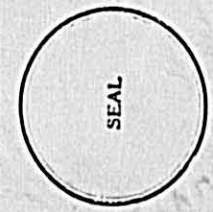
MONEYS AND CREDITS

Total Levy, \$49,446.17. Book Footings, \$49,446.06.

I, C. D. BACON, Auditor of said County and State aforesaid, do hereby certify that the foregoing is a true and correct schedule, showing the valuation of all the taxable property in the Village of Federal Dam in said County, the several rates of taxation and Totals of the several Tax Funds levied thereon for the year A. D. 1921.

Witness my hand and official seal this 29 day of January, A. D. 1922.

C. D. Bacon
County Auditor.



State of Minnesota,)
COUNTY OF CASS,) ss.
I, C. D. Bacon, Auditor of said County and State aforesaid, do hereby certify that the foregoing is a true and correct schedule, showing the valuation of all the taxable property in the Village of Federal Dam in said County, the several rates of taxation and Totals of the several Tax Funds levied thereon for the year A. D. 1921.

Tax List of Real Property in the _____ of _____

Cass County, Minnesota, for Taxes for the Year 1921.

101251 - FREE PRESS, WAREHO, MINN.

IN WHOSE NAME ASSESSED	TO WHOM TRANSFERRED	Sold for Taxes	SUBDIVISION	No. of Acres		VALUATION	No. School Dist.	School District No. Rate	School District No. Rate	School District No. Rate	Highway Ditch No.	Ditch No.	Ditch No.	Ditch No.	TOTAL TAXES	PAID	WHEN PAID	No. of Receipt	March Settlement	June Settlement	Penalty	November Settlement	Penalty	Collections to First Monday in January	Penalty	Delinquent on First Monday in January	REMARKS	
				Acres	100's																							Dollars
Village of Federal Dam				1	2	to									346													
				2		to									346													
				3		to									346													
				4		to									346													
				5		to									346													
				6		to									346													
				7		to									346													
				8		to									346													
				9		to									346													
				10		to									346													
				11		to									346													
Chas. N. Bourdon				12		to									346													
C. N. Illeboe				13		to									3810													
Chas. N. Bourdon				14		to									693													
E. M. Lannon				15		to									346													
				16		160									1385													
				17		140									3810													
Laura J. Hiddell				18		to									346													
R. J. Coughlin				19		to									346													
A. E. Payne				20		390									3377													
A. E. Payne				21		530									1589													
				22		2640									22854													

Exempt to

Exempt

Exempt

End Half Paid JUL 31 1922

1st. Half Paid MAY 31 1922

End Half Paid JUL 31 1922

1st. Half Paid MAY 31 1922

Paid in Full MAY 31 1922

Paid in Full MAY 31 1922

Paid in Full MAY 31 1922

1st. Half Paid MAY 31 1922

End Half Paid JUL 31 1922

1st. Half Paid MAY 31 1922

Paid May 31 1923

So. 40' x 150' of lot 20

Bal. of 20

21

398 346- 52

246

346

797 693-1.04

2191 1905-2.86

199 173-.26

18 17.88 due next year

Tax List of Real Property in the _____ of _____

Cass County, Minnesota, for Taxes for the Year 1921.

IN WHOSE NAME ASSESSED	TO WHOM TRANSFERRED	Sold for Taxes	SUBDIVISION	No. of Acres		VALUATION	No. School Dist.	School District No. Rate	School District No. Rate	School District No. Rate	Highway Ditch No.	Ditch No.	Ditch No.	Ditch No.	TOTAL TAXES	PAID	WHEN PAID	No. of Receipt	March Settlement	June Settlement	Penalty	November Settlement	Penalty	Collections to First Monday in January	Penalty	Delinquent on First Monday in January	REMARKS	
				Acres	100's																							Dollars
Arthur W. Main				1	6	680									5887	1	✓											
Wm. Schuft	E. L. Schuft			2		120									1039	2	✓											
				3		680									5887	3	Paid in Full APR 13 1922											
				4		400									3463	4	Paid in Full APR 13 1922	32725										
				5		120									1039	5	Paid in Full APR 13 1922		10389	✓								
Oscar H. North				6		40									346	6	Paid in Full APR 31 1922	17634										
John J. Kane				7		40									346	7	1st. Half Paid MAY 31 1922	7959										
A. G. Lee				8		40									346	8	Paid	16091										
B. L. Fairbanks				9		40									346	9	Paid May 31 1922	315839										
				10		40									346	10	✓											
Chas M. Bourdon				11		40									346	11	✓											
				12		40									346	12	Paid in Full MAY 3 1 1922											
				13		40									346	13	Paid in Full MAY 3 1 1922											
				14		40									346	14	Paid in Full MAY 3 1 1922											
				15		40									346	15	Paid in Full MAY 3 1 1922	1816										
				16		40									346	16	Paid in Full MAY 3 1 1922	24226										
				17		40									346	17	Paid in Full MAY 3 1 1922											
				18		40									346	18	Paid in Full MAY 3 1 1922											
J. J. Hagen	J. H. Putnam			19		400									3463	19	Paid in Full DEC 29 1922	13444										
Everett Fairbanks				20		680									5887	20	2nd Half Paid OCT 31 1922	12414										
				21		680									5887	20	1st Half Paid MAY 3 1 1922	8784										
						4000									34627													

lots to 2nd

15928 3116 3463

Tax List of Real Property in the _____ of _____

101251 FREE PRESS, WABKATO, MINN.

IN WHOSE NAME ASSESSED	TO WHOM TRANSFERRED	Sold for Taxes	SUBDIVISION	Sec. or Lot	Town or Block	Rng.	No. of Acres		VALUATION	No. School Dist.	School District	School District	School District
							Acres	100's			No. Mills	No. Mills	No. Mills
									Dollars		\$ cts.	\$ cts.	\$ cts.
<i>Hulda Sobalt</i>							9	14	32				
<i>"</i>							10		32				
<i>Tri State Land Co.</i>							11		32				
<i>Henry Lettman</i>							12		80				
<i>Chas N. Bourdon</i>							1	15	20				
<i>"</i>							2		20				
<i>"</i>							3		20				
<i>"</i>							4		20				
<i>"</i>							5		20				
<i>"</i>							6		20				
<i>"</i>							7		20				
<i>"</i>							8		20				
<i>"</i>							9		20				
<i>"</i>							10		20				
<i>"</i>							11		20				
<i>"</i>							12		20				
<i>"</i>							13		20				
<i>"</i>							14		20				
<i>"</i>							15		20				
<i>"</i>							16		20				
<i>Alberty Barty</i>	<i>Oliver Co. Morse</i>						1	16	1240				
<i>A. M. Finman</i>	<i>Chas N. Bourdon</i>						2		540 1030				
<i>"</i>	<i>"</i>						3		30				
<i>Raymond Miller</i>	<i>"</i>						4		80				
									2796				

Cass County, Minnesota, for Taxes for the Year 1921.

Highway Ditch No.	Ditch No.	Ditch No.	Ditch No.	TOTAL TAXES	PAID	WHEN PAID	No. of Receipt	March Settlement	June Settlement	Penalty	November Settlement	Penalty	Collections to First Monday in January	Penalty	Delinquent on First Monday in January	REMARKS
\$ cts.	\$ cts.	\$ cts.	\$ cts.	\$ cts.		Month Day Year		\$ cts.	\$ cts.	\$ cts.	\$ cts.	\$ cts.	\$ cts.	\$ cts.	\$ cts.	
				277.1		PAID in Full MAY 29 1922										
				277.2		PAID in Full MAY 29 1922										
				277.3		PAID in Full MAY 29 1922										
				693.4		<i>Paid Acct.</i>										
				173.5		<i>2nd half pd Mar 9 1923</i>										
				173.6		<i>1st half pd MAY 31 1922</i>										
				173.7		<i>2nd half pd Mar 9 1923</i>										
				173.8		<i>1st half pd MAY 31 1922</i>										
				173.9		<i>2nd .. Mar 9 1923</i>										
				173.10		<i>1st Half Paid MAY 31 1922</i>										
				173.11		<i>2nd .. Mar 9 1923</i>										
				173.12		<i>1st Half Paid MAY 31 1922</i>										
				173.13		<i>2nd .. Mar 9 1923</i>										
				173.14		<i>1st Half Paid MAY 31 1922</i>										
				173.15		<i>2nd .. Mar 9 1923</i>										
				173.16		<i>1st Half Paid MAY 31 1922</i>										
				107.36		<i>2nd Half Paid OCT 31 1922</i>										
				189.18		<i>1st Half Paid MAY 31 1922</i>										
				260		<i>2nd Half Paid JUL 6 1922</i>										
				693.20		<i>PAID Aug 30 1916 16102</i>										
				242.07												
									118.26							

Tax List of Real Property in the _____ of _____

Cass County, Minnesota, for Taxes for the Year 1921.

IN WHOSE NAME ASSESSED	TO WHOM TRANSFERRED	Sold for Taxes	SUBDIVISION	No. of Acres		VALUATION	No. School Dist.	School District	School District	School District	Highway Ditch No.	Ditch No.	Ditch No.	Ditch No.	TOTAL TAXES	PAID	WHEN PAID	No. of Receipt	March Settlement	June Settlement	Penalty	November Settlement	Penalty	Collections to First Monday in January	Penalty	Delinquent on First Monday in January	REMARKS
				Rate	Rate			Rate	\$	cts.																	
			<i>Kalbs Addition</i>			Dollars																					
<i>Kalbs Investment Co.</i>						20									173	1	2nd Half Paid DEC 6 1922										
"						20									173	2	2nd Half Paid DEC 6 1922										
"						20									173	3	2nd Half Paid DEC 6 1922										
"						20									173	4	2nd Half Paid DEC 6 1922										
"						20									173	5	2nd Half Paid DEC 6 1922	13231						778	78		
"						20									173	6	2nd Half Paid DEC 6 1922	8443									
"						20									173	7	2nd Half Paid DEC 6 1922										
"						20									173	8	2nd Half Paid DEC 6 1922										
"						20									173	9	2nd Half Paid DEC 6 1922										
<i>Hiram S. Mc Nair</i>						6									52	11	1st. Half Paid MAY 3 1922										
"						6									52	12	1st. Half Paid MAY 3 1922										
"						6									52	13	1st. Half Paid MAY 3 1922										
"						6									52	14	1st. Half Paid MAY 3 1922										
"						6									52	15	1st. Half Paid MAY 3 1922										
"						6									52	16	1st. Half Paid MAY 3 1922										
"						6									52	17	1st. Half Paid MAY 3 1922										
"						6									52	18	1st. Half Paid MAY 3 1922										
"						6									52	19	1st. Half Paid MAY 3 1922										
"						6									52	20	1st. Half Paid MAY 3 1922										
						380									3287												

1298

778

Abatement # 486

Tax List of Real Property in the _____ of _____

Cass County, Minnesota, for Taxes for the Year 1921.

101251 FREE PRESS, MARSH, MINN.

IN WHOSE NAME ASSESSED	TO WHOM TRANSFERRED	Sold for Taxes	SUBDIVISION	No. of Acres		VALUATION	No. School Dist.	School District	School District	School District	Highway Ditch No.	Ditch No.	Ditch No.	Ditch No.	TOTAL TAXES	PAID	WHEN PAID	No. of Receipt	March Settlement	June Settlement	Penalty	November Settlement	Penalty	Collections to First Monday in January	Penalty	Delinquent on First Monday in January	REMARKS
				Acres	100's			No. Rate	No. Rate	No. Rate																	
			Unplatted			Dollars																					
John Johnson			NE 1/4 of SE 1/4 Sec 34	3	143.28	30.45	241	2087			54				21.41	1	Paid in Full DEC 20 1922	13329						21.41	21.41		
B. Walker			SE 1/4 of SE 1/4	"	"	40	356	3052	✓		54				31.36	2	2nd Half Paid OCT 20 1922	10347									
Kabetona Lumber Co.			Lot 3	2	"	34.15	142	1229			178				1407	3	1st Half Paid MAY 8 1922	3767	1568		1568						
Frank M. Pulman			" 2	"	"	24.21	101	875			130				1005	4	End Half Paid OCT 31 1922	11631						2773	24.12	3.61	
Fannie Jones			SE 1/4 of SE 1/4	33	144.28	40	640	5548							3348	5	1st Half Paid MAY 19 1922	4213	2775		2773						
Geo. Cornstock			225 x 1250 ft. of SW 1/4	34	"	6.50	208	1503							1803	6	Paid in Full DEC 30 1922	13553						1803	180		
Chas. J. Campbell			165 x 320 "	"	"	1.25	40	346							346	7		8276	346								
Noble Lumber Co.			" " " " "	"	"	1.25	40	346							346	8											
Ale Henderson			200 x 300 ft. " " "	"	"	1.35	44	381							381	9	✓										
Neils Albrechtson			300 x 700 ft. " " "	"	"	4.75	152	1316							1316	10	Paid in Full OCT 13 1922	10076						1316	137		
			1/2 ac. of SE 1/4 NE 1/4	3	143.28	4.50																					
			Unplatted				153.91	1964	17013		416				17429												
							653.45	10865	94077	Total	972				95021					4689		5657		3944			