

REASSESSMENT OF REAL ESTATE

1928

East  
Township of Gull Lake

Cass County



Reassessment of Taxable Unplatted Real Property in the Town of East Gull Lake County of Cass, Minn., for the Year 1928

NAME OF OWNER	School District	DESCRIPTION OF PROPERTY				ORIGINAL ASSESSMENT					SPECIAL ASSESSOR'S VALUATIONS								
		Subdivision	Sec. or Lot	Twp. or Blk.	Range	No. of Acres of Land	True and Full Value of Land Exclusive of Structures and Improvements	True and Full Value of Buildings and other Structures	True and Full Value of Machinery Permanently Attached to Real Estate	Total True and Full Value of Land Including all Structures, Improvements and Machinery	Assessed Value of Land Including all Structures, Improvements and Machinery	True and Full Value of Land Exclusive of Structures and Improvements	True and Full Value of Buildings and other Structures	True and Full Value of Machinery Permanently Attached to Real Estate	Total True and Full Value of Land Including all Structures, Improvements and Machinery	Assessed Value of Land Including all Structures, Improvements and Machinery	Assessed Value as Equalized by The Minnesota Tax Commission		
Walter Butler (part from W. R. White)		Part of Lot 1				12													
		N. E. 1/4 of N. E. 1/4	9	134	29									133	400		400	133	133
		N. W. 1/4 of N. E. 1/4																	
		S. W. 1/4 of N. E. 1/4																	
		S. E. 1/4 of N. E. 1/4																	
		N. E. 1/4 of N. W. 1/4																	
		N. W. 1/4 of N. W. 1/4																	
		S. W. 1/4 of N. W. 1/4																	
Chas B. White		<del>S. E. 1/4 of N. W. 1/4</del> 49 ac of Lot 2 (winer)				49	75							75			75	25	25
C. B. White		1/2 ac. of Lot 1				50													
Florence H. Winner		N. E. 1/4 of S. W. 1/4 08 ac. of Lot 1 (part of C. B. White)				08	15							15			15	5	5
		N. W. 1/4 of S. W. 1/4																	
		S. W. 1/4 of S. W. 1/4																	
H. P. White		S. E. 1/4 of S. W. 1/4 Lot 1 less 1/2 ac. 4 plat.				1672	450	800	150	1400	467	500	900	1700	566		566	566	566
M. Louise Mc Kay		2 ac. of Lot 2				2	100	150		250	83	300	200	300	166		166	166	166
Anton M. Opsahl		N. E. 1/4 of S. E. 1/4 Lot 3				39	75			450	150	450		450	150		450	150	150
Martha H. French		N. W. 1/4 of S. E. 1/4 W. 1/2 ac. of Lot 2				44	51			600	1050	1650	550	3050	1220		4270	1423	1423
E. S. Houghton		<del>S. W. 1/4 of S. E. 1/4 18.10 ac. of NW 1/4 of S. E. 1/4 of Lot 2</del>				18	10			130	1000	1130	579	1930			1930	579	579
Anton M. Opsahl		S. E. 1/4 of S. E. 1/4 Lot 4 - less plat				31	390			390	130	775		775	258		775	258	258
Paul R. Gray, J. W. Jullien & Fred W. Bergquist		2 ac. of Lot 2				2	50	500		550	183	800	400	1200	400		1200	400	400
							125	97		2820	150	5473		5473	6866	3740	10601	3633	3633
							106	97		2090		3450		3450					

C. R. White to  
J. Newman  
.01 acre of lot 1

Lot 1

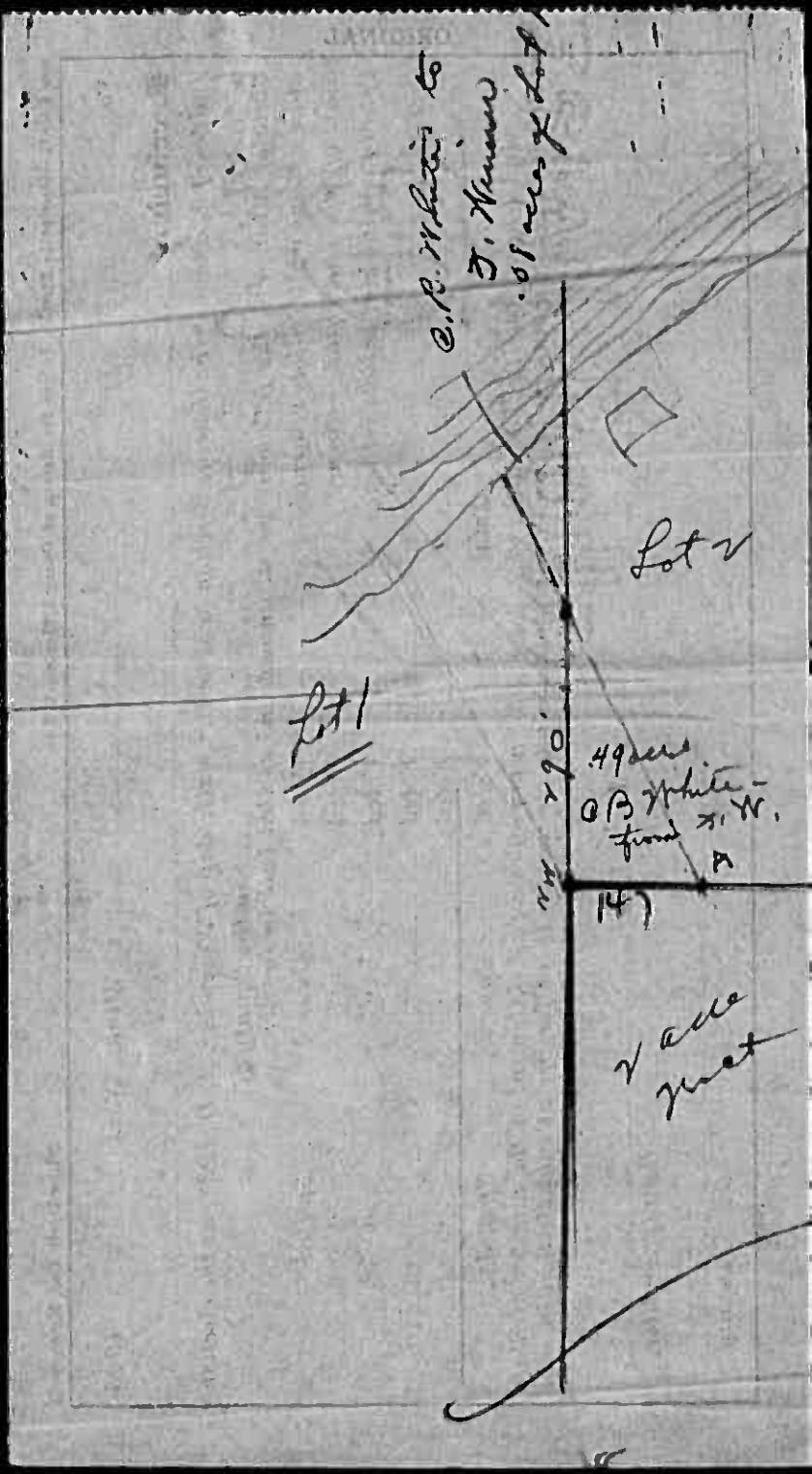
Lot 2

190'

49 acres  
O B White -  
found N. W.  
A

(14)

2 acre  
tract



C. B. White to  
J. N. Nunn  
of acre of Lot 1

Lot 1

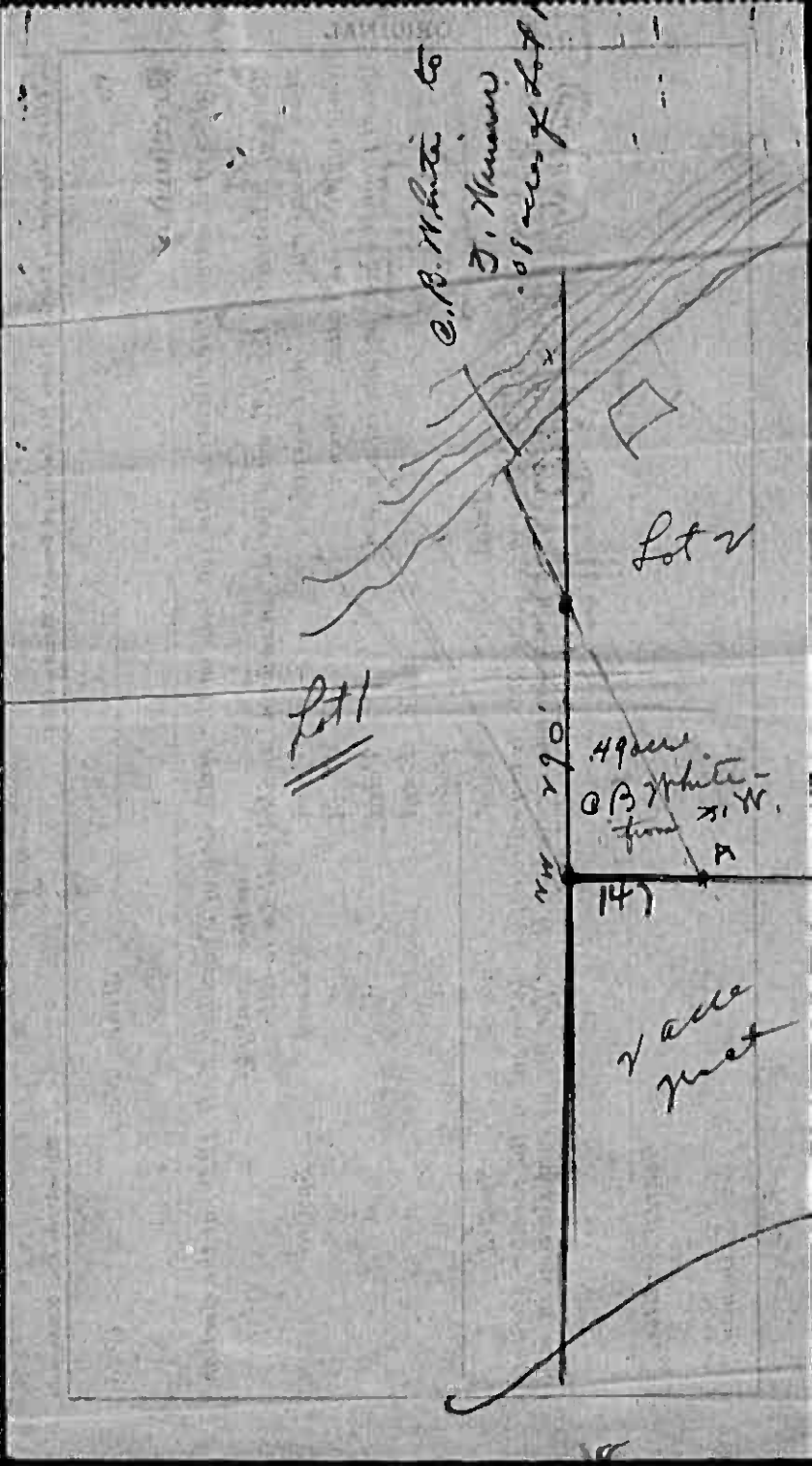
Lot 2

NW 290'

49 acres  
C. B. White -  
from N. W.

145

2 acre  
tract



Lot 1-9-134

Lot 2-9-134-29

208"

417'

S. Town Road

150'

6.19. May  
500' with Garage

300'



Lake



Brainard Minn 7/11-1929

Mr A. A. Cater

County Auditor

Walker, Minn.

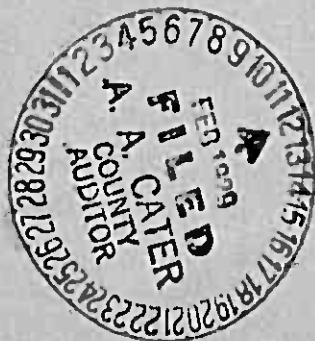
Dear Sir:

I was at one time owner of a strip of land cut off from Lot 2, Sec 9, Twp 134-29, 208 X 417 feet containing two acres more or less. a lot 150 X 300 feet on which is located a cottage was sold several years ago to C. D. Kay, the balance of the strip is used as a town road I have been paying too much tax on this strip for several years. This year I have paid \$5.33 which really means that I have donated this land to the town of East Gull Lake for road purposes and they are paying \$5.33 for that privilege.

I am attaching a sketch hereto and wish you would take it up with the proper authorities so that future assessments will be made on a different basis, and also have refunded to me the greater part of the \$5.33 which I have paid the County Treasurer for 1928 taxes.

Respectfully

Henry R. White





Reassessment of Taxable Unplatted Real Property in the \_\_\_\_\_ of \_\_\_\_\_ County of \_\_\_\_\_, Minn., for the Year 192.....

NAME OF OWNER	School District	DESCRIPTION OF PROPERTY				ORIGINAL ASSESSMENT					SPECIAL ASSESSOR'S VALUATIONS					
		Subdivision	Sec. or Lot	Twp. or Blk.	Range	No. of Acres of Land	STRUCTURES and IMPROVEMENTS		Total True and Full Value of Lands Including all Structures, Improvements and Machinery	Assessed Value of Lands Including all Structures, Improvements and Machinery	STRUCTURES and IMPROVEMENTS		Total True and Full Value of Lands Including all Structures, Improvements and Machinery	Assessed Value of Lands Including all Structures, Improvements and Machinery	Assessed Value as Equalized by The Minnesota Tax Commission	
							True and Full Value of Lands Exclusive of Structures and Improvements	True and Full Value of Buildings and other Structures			True and Full Value of Machinery Permanently Attached to Real Estate	True and Full Value of Buildings and other Structures				True and Full Value of Machinery Permanently Attached to Real Estate
The Kingston St. Bk. (Matt Lee)		N. E. 1/4 of N. E. 1/4	Lot 1	16	134	29	34	80	600		600	200	417	417	139	139
H. R. White		N. W. 1/4 of N. E. 1/4	" 5 less plat		36			36	510		510	170	340	340	180	180
Geo. W. French		S. W. 1/4 of N. E. 1/4	" 2		31	65		31	325	475	800	267	379	360	246	246
The Kingston St. Bk. (Matt Lee)		S. E. 1/4 of N. E. 1/4			40			40	510		510	170	400	400	133	133
Karl S. Breitenberg		N. E. 1/4 of N. W. 1/4	" 4		24	40		24	450		450	150	610	610	203	203
Joseph Baakkonen		N. W. 1/4 of N. W. 1/4			40			40	500		500	167	300	300	167	167
Fannie E. Setula		S. E. 1/4 of N. W. 1/4	" 3		29	30		29	450		450	150	450	450	150	150
Matt Hay		N. E. 1/4 of S. W. 1/4			40			40	510		510	170	310	310	170	170
Jack Tersha		N. W. 1/4 of S. W. 1/4			40			40	600		600	200	600	600	200	200
Oscar Heino		S. W. 1/4 of S. W. 1/4			40			40	510		510	170	310	310	170	170
Wm Stroberg		S. E. 1/4 of S. W. 1/4			40			40	510		510	170	310	310	170	170
Geo. W. French		N. E. 1/4 of S. E. 1/4			40			40	450		450	150	450	450	150	150
"		N. W. 1/4 of S. E. 1/4			40			40	390		390	130	390	390	130	130
"		S. W. 1/4 of S. E. 1/4			40			40	249		249	83	249	249	83	83
Chas. Orvola		S. E. 1/4 of S. E. 1/4			40			40	390		390	130	390	390	130	130
					556	15		556	6954	475	7429	2477	6405	360	2421	2421

Reassessment of Taxable Unplatted Real Property in the \_\_\_\_\_ of \_\_\_\_\_ County of \_\_\_\_\_, Minn., for the Year 192.....

NAME OF OWNER	School District	DESCRIPTION OF PROPERTY				ORIGINAL ASSESSMENT					SPECIAL ASSESSOR'S VALUATIONS								
		Subdivision	Sec. or Lot	Twp. or Blk.	Range	No. of Acres of Land	STRUCTURES and IMPROVEMENTS		Total True and Full Value of Lands Including all Structures, Improvements and Machinery	Assessed Value of Lands Including all Structures, Improvements and Machinery	STRUCTURES and IMPROVEMENTS		Total True and Full Value of Lands Including all Structures, Improvements and Machinery	Assessed Value of Lands Including all Structures, Improvements and Machinery	Assessed Value as Equalized by The Minnesota Tax Commission				
							True and Full Value of Lands Exclusive of Structures and Improvements	True and Full Value of Buildings and other Structures			True and Full Value of Machinery Permanently Attached to Real Estate	True and Full Value of Buildings and other Structures				True and Full Value of Machinery Permanently Attached to Real Estate			
Joseph Baakkonen		N. E. 1/4 of N. E. 1/4			17	134	29												
Hermine Peterson		N. W. 1/4 of N. E. 1/4			40			40	1400	1550	100	2650	883	1000	1500	100	2650	883	883
John M. Bye		S. W. 1/4 of N. E. 1/4			17			17	340			340	113	340			340	113	113
Ernest Pitare		S. E. 1/4 of N. E. 1/4			14			14	560			560	187	350			350	116	116
J. W. McNaughton		S. E. 1/4 of N. W. 1/4			60			60	60	800		860	287	150	800		950	317	317
		All So. + W. of Gull River + 350 ft N., 108 ft S.E. + 338 ft so. + 75 ft. nec. to place of beginning			170			170	36	1050		1086	362	510	360		1070	337	337
S. A. Riches		N. E. 1/4 of S. W. 1/4			9			9	180	1600		1780	593	180	1700		1880	627	627
Maria Heino		N. W. 1/4 of S. E. 1/4			40			40	875	450		1325	442	875	450		1325	442	442
S. A. Riches		N. W. 1/4 of S. E. 1/4	Lot 4		25			25	510			510	170	510			510	170	170
"		S. W. 1/4 of S. E. 1/4			38	93		38	350	1200		1550	517	350	1300		1630	530	530
"		S. E. 1/4 of S. E. 1/4			186	23		186	3911	6650	100	10661	3554	4265	6360	100	10926	3575	3575



Reassessment of Taxable Unplatted Real Property in the \_\_\_\_\_ of \_\_\_\_\_ County of \_\_\_\_\_, Minn., for the Year 192\_\_\_\_\_

NAME OF OWNER	School District	DESCRIPTION OF PROPERTY				ORIGINAL ASSESSMENT				SPECIAL ASSESSOR'S VALUATIONS				Assessed Value as Equalized by The Minnesota Tax Commission	
		Subdivision	Sec. or Lot	Twp. or Blk.	Range	No. of Acres of Land	True and Full Value of Lands Exclusive of Structures and Improvements	STRUCTURES and IMPROVEMENTS		Total True and Full Value of Lands Including all Structures, Improvements and Machinery	Assessed Value of Lands Including all Structures, Improvements and Machinery	True and Full Value of Lands Exclusive of Structures and Improvements	STRUCTURES and IMPROVEMENTS		
								True and Full Value of Buildings and other Structures	True and Full Value of Machinery Permanently Attached to Real Estate				True and Full Value of Buildings and other Structures		True and Full Value of Machinery Permanently Attached to Real Estate
<i>Rena L. Floan</i>		N. E. 1/4 of N. E. 1/4 Lot 5	19	134	29	75	40	950	990	330	40	1000	1040	346	346
<i>Geraldine J. Harrison</i>		<del>S. E. 1/4 of N. E. 1/4</del>													
<i>C. J. Start</i>		<del>Part of Lot 19 Plat of Pine Beach</del>					300	900	1200	400					
		<del>N. E. 1/4 of N. W. 1/4</del>					50	950	1000	333					
		N. W. 1/4 of N. W. 1/4													
		S. W. 1/4 of N. W. 1/4													
		S. E. 1/4 of N. W. 1/4													
		N. E. 1/4 of S. W. 1/4													
		N. W. 1/4 of S. W. 1/4													
		S. W. 1/4 of S. W. 1/4													
		S. E. 1/4 of S. W. 1/4													
		N. E. 1/4 of S. E. 1/4													
		N. W. 1/4 of S. E. 1/4													
		S. W. 1/4 of S. E. 1/4													
		S. E. 1/4 of S. E. 1/4													
						75	40	950	990	330	40	1000	1040	346	346
							390	2800	3190	1063					

*transferred to page 23 - New Plat of Pine Beach*

Reassessment of Taxable Unplatted Real Property in the \_\_\_\_\_ of \_\_\_\_\_ County of \_\_\_\_\_, Minn., for the Year 192\_\_\_\_\_

NAME OF OWNER	School District	DESCRIPTION OF PROPERTY				ORIGINAL ASSESSMENT				SPECIAL ASSESSOR'S VALUATIONS				Assessed Value as Equalized by The Minnesota Tax Commission		
		Subdivision	Sec. or Lot	Twp. or Blk.	Range	No. of Acres of Land	True and Full Value of Lands Exclusive of Structures and Improvements	STRUCTURES and IMPROVEMENTS		Total True and Full Value of Lands Including all Structures, Improvements and Machinery	Assessed Value of Lands Including all Structures, Improvements and Machinery	True and Full Value of Lands Exclusive of Structures and Improvements	STRUCTURES and IMPROVEMENTS			
								True and Full Value of Buildings and other Structures	True and Full Value of Machinery Permanently Attached to Real Estate				True and Full Value of Buildings and other Structures		True and Full Value of Machinery Permanently Attached to Real Estate	
<i>Theodore Hengen</i>		N. E. 1/4 of N. E. 1/4	20	134	29											
<i>John Lee</i>		<del>S. W. 1/4 of N. E. 1/4</del> Lot 2 - less plat 4 13.70 acres				1225	291		291	97	300			300	100	100
<i>Clyde E. Parker</i>		S. E. 1/4 of N. E. 1/4				40	450		450	150	450			450	150	150
		<del>N. E. 1/4 of N. W. 1/4</del> 13.7 ac. of lot 2				1370	300		300	100	300			300	100	100
		N. W. 1/4 of N. W. 1/4														
		S. W. 1/4 of N. W. 1/4														
		S. E. 1/4 of N. W. 1/4														
<i>Wm Stewart</i>		N. E. 1/4 of S. W. 1/4 Lot 3				3190	775	775	1560	517	1300	820		2120	706	706
<i>Rena L. Floan</i>		N. W. 1/4 of S. W. 1/4 " 4				2662	500		500	167	800			800	266	266
<i>F. W. Harrison</i>		S. W. 1/4 of S. W. 1/4														
<i>Fritz E. Anderson</i>		S. E. 1/4 of S. W. 1/4 " 5				2970	581		581	194	581			581	194	194
<i>F. W. Harrison</i>		N. E. 1/4 of S. E. 1/4				40	450		450	150	450			450	150	150
		N. W. 1/4 of S. E. 1/4				40	450		450	150	450			450	150	150
		S. W. 1/4 of S. E. 1/4 " 6				1425	281		281	94	281			281	94	94
		S. E. 1/4 of S. E. 1/4 " 7				3565	600		600	200	600			600	200	200
						28407	(4691)	(775)	(5466)	(822)	5512	820		6332	2110	2110
							-13 error			-13 error						
							4678		5453	1819						



Reassessment of Taxable Unplatted Real Property in the County of Minn., for the Year 192

Table with columns: NAME OF OWNER, DESCRIPTION OF PROPERTY, ORIGINAL ASSESSMENT, SPECIAL ASSESSOR'S VALUATIONS. Includes handwritten entries for Hans M. Borison, John Lee, John Ylenin, etc.

Reassessment of Taxable Unplatted Real Property in the County of Minn., for the Year 192

Table with columns: NAME OF OWNER, DESCRIPTION OF PROPERTY, ORIGINAL ASSESSMENT, SPECIAL ASSESSOR'S VALUATIONS. Includes handwritten entries for John Walburn, Katie Hermanson, C. J. Fredrickson, etc.



Reassessment of Taxable Unplatted Real Property in the County of Minn., for the Year 192

Table with columns: NAME OF OWNER, DESCRIPTION OF PROPERTY, ORIGINAL ASSESSMENT, SPECIAL ASSESSOR'S VALUATIONS, Assessed Value as Equalized by The Minnesota Tax Commission. Includes entries for J.W. Harrison, W.A. Frampton, C.J. Start, Chas. Fuller, I.C. Strout, J.W. Harrison.

(These totals values valuations for Roll 7)

Reassessment of Taxable Unplatted Real Property in the County of Minn., for the Year 192

Table with columns: NAME OF OWNER, DESCRIPTION OF PROPERTY, ORIGINAL ASSESSMENT, SPECIAL ASSESSOR'S VALUATIONS, Assessed Value as Equalized by The Minnesota Tax Commission. Includes entries for C.J. Start, Phillip F. Holzmann, C.S. Sutton & E.E. Clark, J.W. Harrison, C.J. Start, J.W. Harrison.



Copy

To the Assessor -

Lot 7 was marked "Not on the map in 1928 assessment book, but should be assessed, as Lot 7 is recorded in Reg. Deeds office, and was once railroad land.

29-134-29.



Reassessment of Taxable Unplatted Real Property in the County of Minn., for the Year 192

Table with columns: NAME OF OWNER, DESCRIPTION OF PROPERTY, ORIGINAL ASSESSMENT, SPECIAL ASSESSOR'S VALUATIONS, Assessed Value as Equalized by The Minnesota Tax Commission. Includes entries for J. W. Harrison, C. S. Sutton & E. E. Clark, and Hans Christian Jensen.

Reassessment of Taxable Unplatted Real Property in the County of Minn., for the Year 192

Table with columns: NAME OF OWNER, DESCRIPTION OF PROPERTY, ORIGINAL ASSESSMENT, SPECIAL ASSESSOR'S VALUATIONS, Assessed Value as Equalized by The Minnesota Tax Commission. Includes entries for Mae M. Algier, J. W. Harrison, O. H. Rudi, Bessie Klein, E. E. Havens, Ole Warlof, and Hans Christian Jensen.















Reassessment of Taxable Unplatted Real Property in the County of Minn., for the Year 192

Table with columns: NAME OF OWNER, DESCRIPTION OF PROPERTY, No. of Acres of Land, ORIGINAL ASSESSMENT, SPECIAL ASSESSOR'S VALUATIONS, Assessed Value as Equalized by The Minnesota Tax Commission.

Reassessment of Taxable Unplatted Real Property in the County of Minn., for the Year 192

Table with columns: NAME OF OWNER, DESCRIPTION OF PROPERTY, No. of Acres of Land, ORIGINAL ASSESSMENT, SPECIAL ASSESSOR'S VALUATIONS, Assessed Value as Equalized by The Minnesota Tax Commission.



Reassessment of Taxable Unplatted Real Property in the \_\_\_\_\_ of \_\_\_\_\_ County of \_\_\_\_\_, Minn., for the Year 192\_\_\_\_\_

NAME OF OWNER	DESCRIPTION OF PROPERTY	No. of Acres of Land	ORIGINAL ASSESSMENT				SPECIAL ASSESSOR'S VALUATIONS				Assessed Value as Equalized by The Minnesota Tax Commission
			True and Full Value of Land Exclusive of Structures and Improvements	STRUCTURES and IMPROVEMENTS	Total True and Full Value of Land Including all Structures, Improvements and Machinery	Assessed Value of Land Including all Structures, Improvements and Machinery	True and Full Value of Land Exclusive of Structures and Improvements	STRUCTURES and IMPROVEMENTS	Total True and Full Value of Land Including all Structures, Improvements and Machinery	Assessed Value of Land Including all Structures, Improvements and Machinery	
Chas. D. Mc Kay	Lot 5 - Sec. 16-134-29 H. R. White's 1st Sub. div. of Gull Lake Shores	1	75		75	30	300	300	120	120	
"		2	75		75	30	300	300	120	120	
John A. Mc Kay		3	75	850	925	370	300	920	488	488	
Karl A. Bredenberg		4	75	830	905	362	300	840	456	456	
Andrew G. Anderson		5	75	750	825	330	300	720	408	408	
John Stenberg		6	100		100	40	300	300	120	120	
"		7	75		75	30	300	300	120	120	
Leo A. Rifenrath		8	75		75	30	300	300	120	120	
Roy H. Jones		9	75		75	30	300	300	120	120	
M. H. Nelson		10	75	650	725	290	300	480	312	312	
H. R. White		11	75	650	725	290	300	600	360	360	
"		12	75	700	775	310	300	460	280	280	
Rosalie McElenahane		13	75	875	950	380	300	920	488	488	
Nellie M. Keene		14	75	900	975	390	300	920	488	488	
Nyna B. McCoy		15	75	800	875	350	300	720	408	408	
B. G. Williams		16	75	900	975	390	300	820	448	448	
Thomas G. Johnson		17	75	800	875	350	300	720	408	408	
Chas W. Milkes		18	75		75	30	300	300	120	120	
			1375	8705	10080	4032	3400	8060	5384	5384	

Reassessment of Taxable Unplatted Real Property in the \_\_\_\_\_ of \_\_\_\_\_ County of \_\_\_\_\_, Minn., for the Year 192\_\_\_\_\_

NAME OF OWNER	DESCRIPTION OF PROPERTY	No. of Acres of Land	ORIGINAL ASSESSMENT				SPECIAL ASSESSOR'S VALUATIONS				Assessed Value as Equalized by The Minnesota Tax Commission
			True and Full Value of Land Exclusive of Structures and Improvements	STRUCTURES and IMPROVEMENTS	Total True and Full Value of Land Including all Structures, Improvements and Machinery	Assessed Value of Land Including all Structures, Improvements and Machinery	True and Full Value of Land Exclusive of Structures and Improvements	STRUCTURES and IMPROVEMENTS	Total True and Full Value of Land Including all Structures, Improvements and Machinery	Assessed Value of Land Including all Structures, Improvements and Machinery	
Elsie M. Egan	H. R. White's 1st Sub. div. of Gull Lake Shores	19	75	900	975	390	300	820	448	448	
H. R. White		20	50		50	20	200	200	100	100	
			125	900	1025	410	500	820	548	548	



Reassessment of Taxable Unplatted Real Property in the \_\_\_\_\_ of \_\_\_\_\_ County of \_\_\_\_\_, Minn., for the Year 192\_\_\_\_\_

NAME OF OWNER	School District	DESCRIPTION OF PROPERTY				No. of Acres of Land	ORIGINAL ASSESSMENT					SPECIAL ASSESSOR'S VALUATIONS					
		Subdivision	Sec. or Lot	Twp. or Blk.	Range		Dollars	STRUCTURES and IMPROVEMENTS		Total True and Full Value of Lands Including all Structures, Improvements and Machinery	Assessed Value of Lands Including all Structures, Improvements and Machinery	Dollars	STRUCTURES and IMPROVEMENTS		Total True and Full Value of Lands Including all Structures, Improvements and Machinery	Assessed Value of Lands Including all Structures, Improvements and Machinery	Dollars
								True and Full Value of Buildings and other Structures	True and Full Value of Machinery Permanently Attached to Real Estate				True and Full Value of Buildings and other Structures	True and Full Value of Machinery Permanently Attached to Real Estate			
Carl Bolander		lot 4 - Sec. 9-134-29	1			75		75	30	300			300	120	120		
A. M. Opsahl		Birch Grove on Gull	2			75	800	875	350	300	960	1260	504	504			
M. J. Reis			3			75	650	725	290	300	660	960	384	384			
Gustave Halvarson			4			75	600	625	270	300	600	900	360	380			
Mrs. Lena A. Gilbertson			5			75	500	575	230	300	480	780	312	312			
Louis Hostager			6			75	500	575	230	300	480	780	312	312			
Rebecca Falk Cohen			7			75	800	875	350	300	880	1180	472	472			
C. N. Erickson			8			75	600	675	270	300	600	900	360	360			
August Halquist			9			38	600	638	255	130	600	730	300	300			
O. C. N. Erickson & C. Winther		7 1/2 of	9			38		38	15	130		130	60	60			
O. Benson Bros.		5 1/2 of	9			75	700	775	310	300	800	1100	440	440			
O. J. Winther & Alice C. Winther			11			75		75	30	300		300	120	120			
O. J. Winther			12			75	500	575	230	300	480	780	312	312			
W. J. Thompson			13			75	800	875	350	300	880	1180	472	472			
A. M. Opsahl			14			75	300	375	150	250	320	370	228	228			
Pauline Rowold		less 15 ft. for public walk	15			25	200	225	90	230	120	370	148	148			
A. M. Opsahl			16			10		10	4	50		50	20	20			
"			17			10		10	4	50		50	20	20			
"			18			10		10	4	50		50	20	20			
"			19			10		10	4	50		50	20	20			
						1116	7550	8666	3466	4600	7860	12460	4984	4984			

Reassessment of Taxable Unplatted Real Property in the \_\_\_\_\_ of \_\_\_\_\_ County of \_\_\_\_\_, Minn., for the Year 192\_\_\_\_\_

NAME OF OWNER	School District	DESCRIPTION OF PROPERTY				No. of Acres of Land	ORIGINAL ASSESSMENT					SPECIAL ASSESSOR'S VALUATIONS					
		Subdivision	Sec. or Lot	Twp. or Blk.	Range		Dollars	STRUCTURES and IMPROVEMENTS		Total True and Full Value of Lands Including all Structures, Improvements and Machinery	Assessed Value of Lands Including all Structures, Improvements and Machinery	Dollars	STRUCTURES and IMPROVEMENTS		Total True and Full Value of Lands Including all Structures, Improvements and Machinery	Assessed Value of Lands Including all Structures, Improvements and Machinery	Dollars
								True and Full Value of Buildings and other Structures	True and Full Value of Machinery Permanently Attached to Real Estate				True and Full Value of Buildings and other Structures	True and Full Value of Machinery Permanently Attached to Real Estate			
A. M. Opsahl		Birch Grove on Gull	20			10		10	4	50		50	20	20			
"			21			10		10	4	50		50	20	20			
Art Johnson			22			25	400	425	170	50	400	430	180	180			
A. M. Opsahl			23			10		10	4	50		50	20	20			
"			24			10		10	4	50		50	20	20			
"			25			10		10	4	50		50	20	20			
"			26			10		10	4	50		50	20	20			
"			27			10		10	4	50		50	20	20			
"			28			10		10	4	50		50	20	20			
"			29			10		10	4	50		50	20	20			
						115	400	515	206	500	400	900	360	360			











Tabular Statement of Reassessment of Real Property of the Town of East Gull Lake County of Cass, Minnesota, 192.....

Unplatted

Footings Page	Number of Acres of Land Assessed		ORIGINAL ASSESSMENT					SPECIAL ASSESSOR'S VALUATIONS					Assessed Value as Equalized by the Minnesota Tax Commission Dollars
	Acres	100ths	True and Full Value of Lands Exclusive of Structures and Improvements Dollars	STRUCTURES AND IMPROVEMENTS		Total True and Full Value of Lands Including all Structures, Improvements and Machinery Dollars	Assessed Value of Lands including all Structures, Improvements and Machinery Dollars	True and Full Value of Lands Exclusive of Structures and Improvements Dollars	STRUCTURES AND IMPROVEMENTS		Total True and Full Value of Lands including all Structures, Improvements and Machinery Dollars	Assessed Value of Lands including all Structures, Improvements and Machinery Dollars	
				True and Full Value of Buildings and other Structures Dollars	True and Full Value of Machinery Permanently Attached to Real Estate Dollars				True and Full Value of Buildings and other Structures Dollars	True and Full Value of Machinery Permanently Attached to Real Estate Dollars			
1	106	97	2090	3450	150	5690	1896	6865	3748	10605	3532	3532	
2	556	15	6954	475		7429	2477	6906	360	7266	2421	2421	
3	186	23	3911	6650	100	10661	3554	4265	6360	10625	3576	3576	
4		75	40	950		990	330	40	1000	1040	346	346	
5	284	07	4678	775		5453	1819	5512	820	6332	2110	2110	
6	640		6660	2100		8760	2920	6660	2100	8760	2920	2920	
7	545	32	5977	365		6342	2114	5977	365	6342	2114	2114	
8	320	30	4175	3560		7735	2578	5020	3220	8240	2746	2746	
9	564	43	6957	1760	300	9017	3006	8705	1760	300	10765	3590	3590
10	336	96	3309			3309	1103	3309	200	3509	1169	1169	
11	559	20	5210	750		5960	1986	5210	750	5960	1986	1986	
12	532	75	5510			5510	1837	5510		5510	1837	1837	
Totals,	4633	13	55471	20835	550	76856	25620	63978	20675	400	85833	28345	28345

Note Valuations for lot 7 - Sec 29 should be added to total valuations because of lot 7's which is divided in total.







