

ASSESSMENT & TAX LIST

East Gull Lake

1943













Assessor's

FORM 34

NAME OF OWNER

Treasurer's Office, Cass County, Minnesota

RECEIVED this, the first Monday (being the 3<sup>rd</sup> day) of January,  
 A. D. 1944, of J. C. Peterson, Auditor of said County, Minnesota,  
 the Tax List of all Taxable Real and Personal Property in the Township  
 of East Hull Lake in said County for the year A. D. 1943,  
 as specified above and amounting to eleven thousand one hundred  
 eighty 7 <sup>80</sup>/<sub>100</sub> dollars.  
 W. J. McKeown  
 County Treasurer.

Office of County Treasurer, Cass County, Minnesota

To J. C. Peterson, County Auditor:  
 Sir:—I herewith return to you the Tax List for the Township  
 of East Hull Lake in said County for the year 1943, heretofore  
 received from you. I certify that I have compared the same with the duplicate receipts in  
 your office, and have written opposite the amount of each tax so received the words "First  
 Quarter Paid", "Second Quarter Paid", "Third Quarter Paid" or "Paid in full" as the  
 case may be, and the number of my receipt given in discharge of said tax, and each tract  
 or lot of real property against which the taxes remain unpaid is delinquent for said year.  
 Yours respectfully,  
 W. J. McKeown  
 County Treasurer.

Auditor's Office, Cass County, Minnesota

I, \_\_\_\_\_ Auditor of said County, and State  
 of Minnesota, do hereby certify that the following is a correct list of the Taxes levied on the  
 Real and Personal Property in the \_\_\_\_\_ of \_\_\_\_\_  
 for the year 1943.  
 I WITNESS my hand and official seal this \_\_\_\_\_ day of \_\_\_\_\_  
 1944.  
 \_\_\_\_\_  
 County Auditor.

Auditor's Office, Cass County, Minnesota

I hereby certify that on the first Monday in January 1945, I received of \_\_\_\_\_  
 \_\_\_\_\_ County Treasurer, the Tax List of the \_\_\_\_\_  
 of \_\_\_\_\_ in said  
 County for the year 1943; that I have compared the said list with the Statements received  
 for by said Treasurer, which are on file in my office, and that each tract or lot of real  
 property therein against which the taxes, or any part thereof, remains unpaid are delin-  
 quent for said year.  
 \_\_\_\_\_  
 County Auditor.







Assessor's

COLLECTIONS OF TAXES OF 1943

Township OF East Gull Lake, CASS COUNTY, MINNESOTA

FORM 34

FUNDS	MARCH SETTLEMENT 1943	JUNE SETTLEMENT 1943	NOV. SETTLEMENT 1943	Amount Collected from Nov. 1942 to First Monday in Jan. 1943	REDUCTIONS	Deflected Calculations	Total Reductions and Collect	BALANCE UNCOLLECTED	ADDITIONS	Total Uncollected to First Monday in January, 1943
State Revenue, State School, Teachers Insurance, State Debt - Non-Homestead, State Debt - Homestead,	4059 1498	12139 4633	8322 3045	205 58						
County Revenue, County Road and Bridge, County Welfare, County Bond and Interest, <i>sewer</i>	27082 5616 43931 24212 749	83781 17374 125903 74901 2317	55057 11418 87312 49223 1522	1052 218 1707 941 29						
Town Revenue, Town Road and Bridge, Town Drag, Town State Loan,	3495 7488 1248	10811 23165 3861	7104 15224 2537	136 291 49						
School Local 1 Mill, School Special, School State Loan,	1248 3741	3860 115826	2537 76119	49 1455						
Money and Credits.										
	158069	488571	321420	6190	17756	2684			5790	127182

NAME OF OWNER

	SCHOOL DISTRICT NO.	LOCAL 1 MILE	SPECIAL	STATE LOAN	TOTALS
MARCH SETTLEMENT	24 26	377 877	11222 26119		11699 26990
JUNE SETTLEMENT	24 26	1848 2578	37441 77264		38689 9744 79942
NOVEMBER SETTLEMENT		3860	115826		119686
NOVEMBER to JANUARY	24 26	31 18	915 540		946 558
ADDITIONS		49	1455		1504
REDUCTIONS					



Assessment Roll and Tax List of Unplatted Real Property in the Town of East Bull Lake, Cass County, Minnesota, for Taxes for the Year 1943.

Table with columns: IN WHOSE NAME ASSESSED, TO WHOM TRANSFERRED, DESCRIPTION OF PROPERTY, ASSESSOR'S VALUATION, EQUALIZED VALUES, VALUATIONS BY SCHOOL DISTRICTS AS EQUALIZED BY DEPARTMENT OF TAXATION, SPECIAL TAXES, TOTAL TAXES, PAID, WHEN PAID, Number of Receipt, March Settlement 1944, June Settlement 1944, Penalty, November Settlement 1944, Collections to First Monday in January 1945, Delinquent on First Monday in January 1945, Total Delinquent Tax and Penalty, REMARKS.

Abate #9983

SOLD FOR TAXES



Assessment Roll and Tax List of Unplatted Real Property in the of Cass County, Minnesota, for Taxes for the Year 1943.

Table with columns: IN WHOSE NAME ASSESSED, TO WHOM TRANSFERRED, DESCRIPTION OF PROPERTY, ASSESSOR'S VALUATION, EQUALIZED VALUES, VALUATIONS BY SCHOOL DISTRICTS AS EQUALIZED BY DEPARTMENT OF TAXATION, Rate and Tax Levied, State Tax on Non-Homestead, TOTAL GENERAL TAX, SPECIAL TAXES, TOTAL TAXES, PAID, WHEN PAID, Number of Receipt, March Settlement 1944, June Settlement 1944, November Settlement 1944, Collections to First Monday in January 1945, Delinquent on First Monday in January 1945, Total Delinquent Tax and Penalty, REMARKS.

Kingston State Bk (Matt Lee) Helen H. Butler Martha H. French Homer A. + Clara L. Cuvon Kingston State Bk (Matt Lee) Helen H. Butler Reina Backlund Fannie E. Situla Fannie E. + Mike Situla + Henry + Esther E. Hutchinson Matt Fay Nerman + Lota Myrlee Paul Jack Terska Oscar Hans Eino Tuomi + Alma Tuomi Martha H. French Homer A. + Clara L. Cuvon Chas. Orvola

555.15

1044 2665 3707 427.46 11.18 468.64























Assessment Roll and Tax List of Unplatted Real Property in the of Cass County, Minnesota, for Taxes for the Year 1943.

Table with columns: IN WHOSE NAME ASSESSED, TO WHOM TRANSFERRED, DESCRIPTION OF PROPERTY, ASSESSOR'S VALUATION, EQUALIZED VALUES, and SOLID FOR TAXES. Includes handwritten entries for John S. Lewis, Gull Lake Shore, Inc., Arthur L. Roberts, Dolph C. + Marie Simone, etc.

Cass County, Minnesota, for Taxes for the Year 1943.

Table with columns: VALUATIONS BY SCHOOL DISTRICTS AS EQUALIZED BY DEPARTMENT OF TAXATION, Rate and Tax Less Homestead Exemption, State Tax on Non-Homestead, TOTAL GENERAL TAX, SPECIAL TAXES, PAID, WHEN PAID, Number of Receipt, March Settlement 1944, June Settlement 1944, Penalty, November Settlement 1944, Penalty, Collections to First Monday in January 1945, Delinquent on First Monday in January 1945, Total Delinquent Tax and Penalty, and REMARKS. Includes handwritten entries for districts 1 through 20.



Assessment Roll and Tax List of Unplatted Real Property in the of Cass County, Minnesota, for Taxes for the Year 1943.

Table with columns: IN WHOSE NAME ASSESSED, TO WHOM TRANSFERRED, DESCRIPTION OF PROPERTY, ASSESSOR'S VALUATION, EQUALIZED VALUES, VALUATIONS BY SCHOOL DISTRICTS AS EQUALIZED BY DEPARTMENT OF TAXATION, Rate and Tax Less Homestead Exemption, State Tax on Non-Homestead, TOTAL GENERAL TAX, SPECIAL TAXES, TOTAL TAXES, PAID, WHEN PAID, Number of Receipt, March Settlement 1944, June Settlement 1944, Penalty, November Settlement 1944, Penalty, Collections to First Monday in January 1945, Penalty, Delinquent as First Monday in January 1945, Total Delinquent Tax and Penalty, REMARKS.

U.J. Madden, Jr. + Margaret E. Madden
Arthur L. Roberts
U.J. Madden, Jr. + Margaret E. Madden
Brainard Pine Beach Hotel Corp.
Arthur L. Roberts
C. S. Sutton + E. E. Clark
Arthur L. Roberts
C. S. Sutton + E. E. Clark
Gull Lake Shores, Inc.
U.J. + Margaret Madden
U.J. Madden, Jr. + Margaret E. Madden
Gull Lake Shores, Inc.
Pine Beach Golf Course

Lot 2 less 5.13 ac. Hotel Site + less Madden track 30 134 29 17 07 24
Lot 3 less 3.55 ac. to track D. 8 4
N-W 1/4 of N-E 1/4 Pine Beach Plat. 20
S-W 1/4 of N-E 1/4 all 1/2 of Pine Beach Road. 40
S-E 1/4 of N-E 1/4 Lot 2 less 1.7 ac. Hotel Site 30 33
Part of Lots 1 + 2 (approx. 6 ac.) 6
N-E 1/4 of N-W 1/4 Lot 4 30 40
N-W 1/4 of N-W 1/4 - 5 Sq. quarter acre 40
S-W 1/4 of N-W 1/4 40
S-E 1/4 of N-W 1/4 40
Lot 5 7/8 of quarter acre 17 13
N-E 1/4 of S-W 1/4 40
N-W 1/4 of S-W 1/4 40
S-W 1/4 of S-W 1/4 40
S-E 1/4 of S-W 1/4 40
256' x 113' x 236' x 100' of Lot 2 in NE Corner 60
N-E 1/4 of S-E 1/4 less Pine Beach Golf Course 40
N-W 1/4 of S-E 1/4 40
S-W 1/4 of S-E 1/4 40
S-E 1/4 of S-E 1/4 40
1/2 of S-E 1/4 less part to Madden course? 40

SOLD FOR TAXES

SOLD FOR TAXES

SOLD FOR TAXES

SOLD FOR TAXES

SOLD FOR TAXES

SOLD FOR TAXES

SOLD FOR TAXES

780
M.N. 10,536
11,310
24 139568 4424
143992

Abate # 2468

Abate # 2468

Abate # 2468

Abate # 2468

Abate # 2468

Abate # 2468

Abate # 2468

Abate # 2468

Abate # 2468

Abate # 2468

PAID IN FULL

PAID IN FULL

PAID IN FULL

PAID IN FULL

PAID IN FULL

PAID IN FULL

PAID IN FULL

PAID IN FULL

PAID IN FULL

PAID IN FULL

PAID IN FULL

PAID IN FULL

PAID IN FULL

PAID IN FULL

PAID IN FULL

PAID IN FULL

PAID IN FULL

PAID IN FULL

PAID IN FULL

OCT 20 1944

AUG 16 1944

AUG 16 1944

OCT 18 1944

JUN 5 1944

NOV 1 1944

NOV 1 1944

NOV 1 1944

NOV 1 1944

NOV 1 1944

NOV 1 1944

OCT 20 1944

AUG 16 1944

AUG 16 1944

OCT 24 1944

OCT 24 1944

OCT 24 1944

OCT 24 1944

OCT 24 1944

10426

9479

9479

10286

10457

1064

1064

1064

1064

1064

1064

1064

1064

1064

1064

1064

1064

1064

1064

7034

494

408

822

925 50

106 98

2468

826

408

1234

2060

2060

988

2098

2176

2876

1234

1234

1234

7034

494

408

822

925 50

106 98

2468

826

408

1234

2060

2060

988

2098

2176

2876

1234

1234

1234

7034

494

408

822

925 50

106 98

2468

826

408

1234

2060

2060

988

2098

2176

2876

1234

1234

1234

7034

494

408

822

925 50

106 98

2468

826

408

1234

2060

2060

988

2098

2176

2876

1234

1234

1234

7034

494

408

822

925 50

106 98

2468

826

408

1234

2060

2060

988

2098

2176

2876

1234

1234

1234

7034

494

408

822

925 50

106 98

2468

826

408

1234

2060

2060

988

2098

2176

2876

1234

1234

1234

7034

494

408

822

925 50

106 98

2468

826

408

1234

2060

2060

988

2098

2176

2876

1234

1234

1234

7034

494

408

822

925 50

106 98

2468

826

408

1234

2060

2060

988

2098

2176

2876

1234

1234

1234

7034

494

408

822

925 50

106 98

2468

826

408

1234

2060

2060

988

2098

2176

2876

1234

1234

1234

7034

494

408

822

925 50

106 98

2468

826

408

1234

2060

2060

988

2098

2176

2876

1234

1234

1234

7034

494

408

822

925 50

106 98

2468

826

408

1234

2060

2060

988

2098

2176

2876

1234

1234

1234

7034

494

408

822

925 50

106 98

2468

826

408

1234

2060

















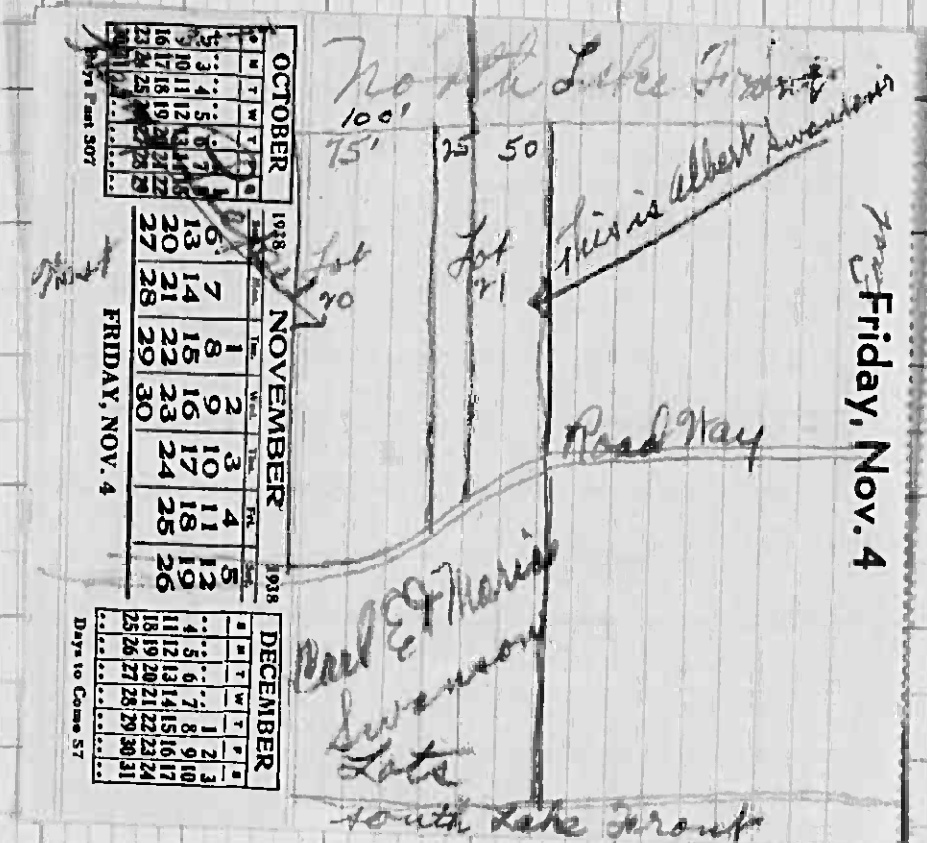


Assessment Roll and Tax List of Platted Real Property in the of Cass County, Minnesota, for Taxes for the Year 1943.

Main table with columns: IN WHOSE NAME ASSESSED, TO WHOM TRANSFERRED, DESCRIPTION OF PROPERTY, ASSESSOR'S VALUATION, EQUALIZED VALUES, VALUATIONS BY SCHOOL DISTRICTS AS EQUALIZED BY DEPARTMENT OF TAXATION, SPECIAL TAXES, TOTAL TAXES, PAID, WHEN PAID, Number of Receipt, March Settlement 1944, June Settlement 1944, November Settlement 1944, Collections to First Monday in January 1945, Delinquent on First Monday in January 1945, Total Delinquent Tax and Penalty, REMARKS.

Handwritten entries in the 'IN WHOSE NAME ASSESSED' and 'TO WHOM TRANSFERRED' columns, including names like Carl E. + Maria S. Swanson, Albert M. + Gladys E. Swanson, Max L. + Rose V. Evans, etc.

Square Point



Abate #1641

Abate #1795

Abate #1795

PAID NOV 13 1944 #1545 AUG 31 1944 #9735

Abatement #2298

Refund W# 75120 6-28-44 23.16

23.16 Abated



Assessment Roll and Tax List of Platted Real Property in the of Cass County, Minnesota, for Taxes for the Year 1943.

Table with columns: IN WHOSE NAME ASSESSED, TO WHOM TRANSFERRED, DESCRIPTION OF PROPERTY, ASSESSOR'S VALUATION, EQUALIZED VALUES, VALUATIONS BY SCHOOL DISTRICTS AS EQUALIZED BY DEPARTMENT OF TAXATION, Rate and Tax Less Homestead Exemption, State Tax on Non-Homestead, TOTAL GENERAL TAX, SPECIAL TAXES, TOTAL TAXES, PAID, WHEN PAID, Number of Receipt, March Settlement 1944, June Settlement 1944, Penalty, November Settlement 1944, Penalty, Collections to First Monday in January 1945, Penalty, Delinquent on First Monday in January 1945, Total Delinquent Tax and Penalty, REMARKS.

Frank B. & Laura D. Johnson  
Jean J. Gates  
N. E. & Myrtle Entrikin

Squaw Point  
200' (Except track add to Bitter) A  
125' Commencing at S.E. Cor. of Lot A, thence running N. to N.E. Corner of said Lot, thence W. along lake 175', thence S. to a point 110' W. of S.E. Cor. of Lot A, thence E. to S.E. Corner of Lot A.

1/2 75' of Lot 9

7.4.88.      220 10860 370      11230

Oakhurst  
Pine Bay  
Pine Beach  
H. A. White & Sons - 511  
Gull Lake Shores  
Arch Rows on 511



Assessment Roll and Tax List of Platted Real Property in the of Cass County, Minnesota, for Taxes for the Year 1943.

Table with columns: IN WHOSE NAME ASSESSED, TO WHOM TRANSFERRED, DESCRIPTION OF PROPERTY, ASSESSOR'S VALUATION, EQUALIZED VALUES, VALUATIONS BY SCHOOL DISTRICTS AS EQUALIZED BY DEPARTMENT OF TAXATION, Rate and Tax Less Homestead Exemption, State Tax on Non-Homestead, TOTAL GENERAL TAX, SPECIAL TAXES, TOTAL TAXES, PAID, WHEN PAID, Number of Receipt, March Settlement 1944, June Settlement 1944, November Settlement 1944, Penalties, Collections in First Monday in January 1945, Penalties, Disbursements on First Monday in January 1945, Total Delinquent Tax and Penalties, REMARKS.

Fannie S. Chaffee

Edw. F. Holmes + Mary E. Zyteman

Carl F. Jamison, Sr.

Mary E. Zyteman + J. G. Conklin

Clayton E. Porter + Fred G. + Adeline M. Conklin

Wm. McNaughton + Fred O. Welst

Subdivision Phe Bay (Part of Lot 2, Sec. 20-134-29)

Outlet

36

4 452 714.1308 1760 #26 21722 540 22262

44030

Oakhurst

Pine Beach

Hwy. 1 White's Sub-Dr. V. Iron Grove on Hill Lake Shores



Assessment Roll and Tax List of Platted Real Property in the of Cass County, Minnesota, for Taxes for the Year 1943.

Table with columns: IN WHOSE NAME ASSESSED, TO WHOM TRANSFERRED, DESCRIPTION OF PROPERTY, ASSESSOR'S VALUATION, EQUALIZED VALUES, VALUATIONS BY SCHOOL DISTRICTS AS EQUALIZED BY DEPARTMENT OF TAXATION, Rate and Tax Less Homestead Exemption, State Tax on Non-Homestead, TOTAL GENERAL TAX, SPECIAL TAXES, TOTAL TAXES, PAID, WHEN PAID, Number of Receipt, March Settlement 1944, June Settlement 1944, November Settlement 1944, Collections to First Monday in January 1945, Delinquent on First Monday in January 1945, Total Delinquent Tax and Penalty, REMARKS.

J.R. White's 1st Sub Division of Bull Lake Shore (2x5-16-134-19)

Chas. D. McKay, A. W. Bachs + Eva L. Bachs
Mary L. + Evelyn E. Storm
John A. + Jennie H. McKay
Arthur C. Larson
Andrew G. Anderson
John + Hilda M. Stenberg
Leo A. + Lulu K. Rippenrath
Roy H. Jones
M. H. Nelson
Anthony J. Gustafson
Anna L. Lord
Alice + H. S. McClenahan W. R. Hiller
Nellie M. Kleene
Nyma B. McCoy
B. G. Williams
Thos. G. Johnson
Ralph Stekler
Mabel B. Whitney
Lelen W. Butler

SOLD FOR TAXES

84
N. 1968
71.4.3006
4974

62648

2641

2641

Oakhurst

Pine Beach

Elmer Grove on Hill



Assessment Roll and Tax List of Platted Real Property in the of Cass County, Minnesota, for Taxes for the Year 1943.

Table with columns: IN WHOSE NAME ASSESSED, TO WHOM TRANSFERRED, DESCRIPTION OF PROPERTY, ASSESSOR'S VALUATION, EQUALIZED VALUES, VALUATIONS BY SCHOOL DISTRICTS AS EQUALIZED BY DEPARTMENT OF TAXATION, SPECIAL TAXES, PAID, WHEN PAID, Number of Receipt, March Settlement 1944, June Settlement 1944, November Settlement 1944, Collections to First Monday in January 1945, Delinquent on First Monday in January 1945, Total Delinquent Tax and Penalty, REMARKS.

George D La Ber
Gertrude Opsahl
H. J. Peas, Gerald Martin & Bernice Margaret Halverson
Margaret Halverson
Marie C. Erickson
Herman J. & Sadie V. Cronen
Rebecca Falk Cohen
Chas. C. & Margaret H. Sanderson
Augusta Halquist
Chas. C. & Margaret H. Sanderson
Chester & Stewart Benson
Martha Larson
Annie, Claude, & Clarence Holden's int.
H. J. Thompson, E. L. Murray, Kathleen Peascoe.
Norma Guddine Olsen
Paul & Genevieve Nybrick
Almas Sampson
Leonard Riness
A. M. Opsahl

Subdivision Birch Grove on Bull (Tax 4 Dec. 9-134-19)

SOLD FOR TAXES

SOLD FOR TAXES

SOLD FOR TAXES

SOLD FOR TAXES

Abatement #2483

Refund #76691 17.86 + 2.45 17.86 Abated

4030-4661 57516 1690

59206

510 x 561
510 x 561 17.86
510 x 561 17.86 abated
510 x 561
6634







Assessment Roll and Tax List of Platted Real Property in the of Cass County, Minnesota, for Taxes for the Year 1943.

Form 5 C - MINN. - BAYB. - ROBERT, WINGLOP

Table with columns: IN WHOSE NAME ASSESSED, TO WHOM TRANSFERRED, DESCRIPTION OF PROPERTY, ASSESSOR'S VALUATION, EQUALIZED VALUES, SOLD FOR TAXES. Includes handwritten entries for Ralph C. Falconer, Da. M. P. Barber, Andrew Anderson, Mayme La Bar, and E. S. Houghton.

Cass County, Minnesota, for Taxes for the Year 1943.

Table with columns: VALUATIONS BY SCHOOL DISTRICTS AS EQUALIZED BY DEPARTMENT OF TAXATION, Rate and Tax Less Homestead Exemption, State Tax on Non-Homestead, TOTAL GENERAL TAX, SPECIAL TAXES, TOTAL TAXES, PAID, WHEN PAID, Number of Receipt, March Settlement 1944, June Settlement 1944, November Settlement 1944, Collections to First Monday in January 1945, Date paid on First Monday in January 1945, Total Delinquent Tax and Penalty, REMARKS. Includes handwritten entries for property numbers 1 through 20.



Assessment Roll and Tax List of Platted Real Property in the of Cass County, Minnesota, for Taxes for the Year 1943.

Table with columns: IN WHOSE NAME ASSESSED, TO WHOM TRANSFERRED, DESCRIPTION OF PROPERTY, ASSESSOR'S VALUATION, EQUALIZED VALUES, VALUATIONS BY SCHOOL DISTRICTS AS EQUALIZED BY DEPARTMENT OF TAXATION, SPECIAL TAXES, TOTAL TAXES, PAID, WHEN PAID, Number of Receipt, March Settlement 1944, June Settlement 1944, November Settlement 1944, Collections to First Monday in January 1945, Delinquent on First Monday in January 1945, Total Delinquent Tax and Penalty, REMARKS.

See Copy of Plat - File #1350 J Pine Beach Trading Co. Pine Beach Corporation

Wm. G. Madden, Jr. & Margaret G. Madden

Pine Beach Corporation

Geo. F. + Edith J. Orlmann Pine Beach Corporation C. J. + Blanche H. Start J. H. + Geraldine Harrison

Abate # 2468

Abate # 7832

700 95 14340 3535

#24

436 24 1448

8939

15064



Assessment Roll and Tax List of Platted Real Property in the of Cass County, Minnesota, for Taxes for the Year 1943.

Cass County, Minnesota, for Taxes for the Year 1943.

Table with columns: IN WHOSE NAME ASSESSED, TO WHOM TRANSFERRED, DESCRIPTION OF PROPERTY, ASSESSOR'S VALUATION, EQUALIZED VALUES, VALUATIONS BY SCHOOL DISTRICTS AS EQUALIZED BY DEPARTMENT OF TAXATION, Rate and Tax Less Homestead Exemption, State Tax on Non-Homestead, TOTAL GENERAL TAX, SPECIAL TAXES, TOTAL TAXES, PAID, WHEN PAID, Number of Receipt, March Settlement 1944, June Settlement 1944, November Settlement 1944, Collections to First Monday in January 1945, Delinquent on First Monday in January 1945, Total Delinquent Tax and Penalty, REMARKS.







Assessment Roll and Tax List of Platted Real Property in the of Cass County, Minnesota, for Taxes for the Year 1943.

Table with columns: IN WHOSE NAME ASSESSED, TO WHOM TRANSFERRED, DESCRIPTION OF PROPERTY, ASSESSOR'S VALUATION, EQUALIZED VALUES, VALUATIONS BY SCHOOL DISTRICTS AS EQUALIZED BY DEPARTMENT OF TAXATION, TOTAL GENERAL TAX, SPECIAL TAXES, PAID, WHEN PAID, Number of Receipt, March Settlement 1944, June Settlement 1944, November Settlement 1944, Collections to First Monday in January 1945, Delinquent on First Monday in January 1945, Total Delinquent Tax and Penalty, REMARKS.

Pine Beach Corporation

Pine Beach Tract C-1 (Part of Lot 6)

No. School District 24

SOLD FOR TAXES

1 60 740 26

766 1

PAID IN FULL OCT 28 1944

10999

0 66 843

Ralston - Marguerite F. Gerard

Tract C-2 ( " " 6)

SOLD FOR TAXES

2 60 740 26

766 2

PAID IN FULL OCT 28 1944

1532 54

0 66 843

Pine Beach Corporation

Tract C-3 ( " " 6)

SOLD FOR TAXES

3 60 740 26

766 3

PAID IN FULL OCT 28 1944

10999

0 66 843

Geo. A. + Mabelle D. Maney

Tract C-4 ( " " 6)

SOLD FOR TAXES

4 1000 5924 202

6126 4

PAID IN FULL 6 5 44 5473

6126

1022 1124

Pine Beach Corporation

Tract C-5 ( " " 6)

SOLD FOR TAXES

5 80 988 34

1022 5

PAID IN FULL APR 28 1944

4093

1022 1124

Marshall Conley Brooks + Edward Brooks

Tract C-6 ( " " 6)

SOLD FOR TAXES

6 670 7650 260

7910 6

PAID IN FULL APR 28 1944

4093

1022 1124

Eleanor M. + Wm. H. Kennedy

Tract C-7 ( " " 6)

SOLD FOR TAXES

7 300 3702 126

3828 7

PAID IN FULL JUN 5 1944

5468

3828 4211

Arthur W. + Lily E. Carlson

Tract C-8 ( " " 6)

SOLD FOR TAXES

8 860 10612 362

10974 8

PAID IN FULL JUN 5 1944

5468

10974

Carl A. + Anna F. Bratner

Tract C-9 (Part of Lots 5+6)

SOLD FOR TAXES

9 600 7404 252

7656 9

PAID IN FULL JUN 5 1944

5481

7656

Pine Beach Corporation

Tract D-1 ( " " 7)

SOLD FOR TAXES

10 1000 19744 622

20416 10

PAID IN FULL JUN 6 1944

5494

102.08 abated

"

Tract D-2 ( " " 7)

SOLD FOR TAXES

11 680 8392 286

8678 11

PAID IN FULL JUN 5 1944

5467

8678

"

Tract D-3 ( " " 7)

SOLD FOR TAXES

12 60 740 26

766 12

PAID IN FULL

766

843

"

Tract D-4 ( " " 7)

SOLD FOR TAXES

13 60 740 26

766 13

PAID IN FULL

766

843

"

Tract D-5 ( " " 7)

SOLD FOR TAXES

14 60 740 26

766 14

PAID IN FULL

766

843

"

Tract D-6 ( " " 7)

SOLD FOR TAXES

15 60 740 26

766 15

PAID IN FULL

766

843

M. J. Ruttger

Tract D-7 ( " " 7)

SOLD FOR TAXES

16 80 988 34

1022 16

PAID IN FULL NOV 1 1944

11063

1488 63

Merrill K. + Louise C. Crago

Tract D-8 ( " " 7 Pine Beach + Lot 3 - Sec. 30. 134 + 9)

SOLD FOR TAXES

17 60 740 26

766 17

PAID IN FULL NOV 1 1944

11063

1488 63

Joe E. + Lucy M. Lowe

Tract G-15 Tract G-6 + G-7

SOLD FOR TAXES

18 2000 24680 840

37860 18

PAID IN FULL AUG 9 1944

9258

37860

Merrill K. + Louise C. Crago

Tract G-15

SOLD FOR TAXES

19 1200 14808 504

1022 19

PAID IN FULL AUG 31 1944

9258

102.08 abated

Joe E. + Lucy M. Lowe

Tract G-6 + G-7

SOLD FOR TAXES

20 750 8884 302

9186 20

PAID IN FULL NOV 2 1944

11072

15312 383

Abatement #2430

868a



