

Minnesota National Forest

Township 147 Range 27 Meridian

Corner Sec's 10-11-14-15

Corner Description Norway pine stake Regularly scribed

Corner Markings



Witnesses

15" Norway pine stump, 5' high, 10' S. E. of corner
on Sec. 14. 15" Norway pine stump 5' high 6' N. W. of corner
on Sec. 10.

General Location

Cut over, turned over Norway pine land,
S + E Turn; NW 10% green timber, 1/2 chain E
(Relation to other corners by alignment and measurement, also
with topographic features, roads, streams, trails, fence corners
or other distinctive objects which will enable others to locate.
Mention blazing done if any.)

of Round Lake - Bena road.

George Farley
Forest Ranger

500500

U. S. DEPARTMENT OF AGRICULTURE
FOREST SERVICE

NATIONAL FOREST

CORNERS OF THE PUBLIC SURVEY

T. 147N R. 27W S Mer.

Sections Corner common to Sections
14, 11, 10, and 15

DESCRIPTION OF CORNER

Corner consists of a Birch stub

Dimension above ground 3' inches.

Sketch grooves, letters, figures, or notches, on proper face or edge.

CARDINAL POSITION

DIAGONAL POSITION

N	W	S	E

NW	SW	SE	NE

Mound of is located

Pits are located

Sketch markings of Bearing Trees (or Rocks) in proper box and fill blanks below, giving bearings from Corner to Trees and Distances in Links.

Species N.P. stub N.P. stub

Diameter 14" 15"

Bearing N 45 W S 19 W

Distance 21. 24.

Do you believe this to be a genuine Land Office Corner? Yes

If not, why?

[Signature]

Signature.

7-22-26

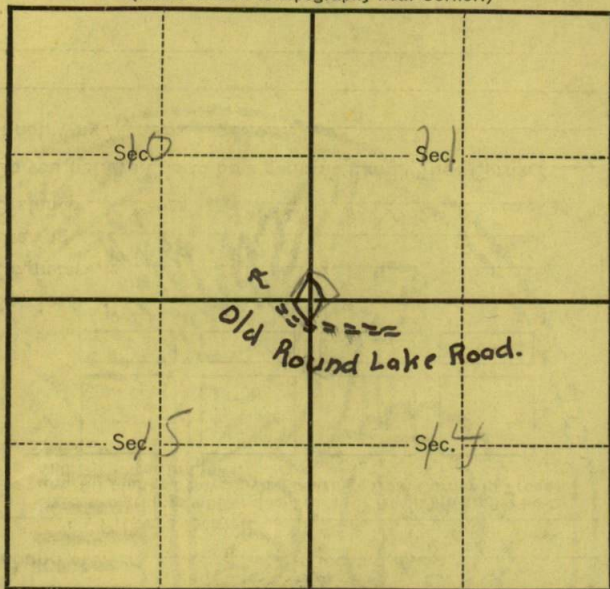
Date.

Title.

T. 147N R. 27W 5 Mer.

8-3027

(Make sketch of topography near Corner.)



Metal Location Poster is on a BT. as described
tree _____ inches diameter, on the _____
side of _____
from which this Corner bears _____
_____ chains distant.

Give any further facts which will aid in finding this
Corner again.

