

434200

102

Number.....

.....Chippewa.....National Forest

CORNER. M.C. corner common to ..... T. 147....., R. 27. W. 5th. P. Mer.  
sections 27 and 34

CORNER DESCRIPTION AND MARKINGS

G.L.O. iron post in place. Brass cap, properly marked.  
10" above ground.

WITNESSES	T 147 N R 27 W	T 147 N R 27 W	T 147 N.R. 27 W
	S 34	S 27	S 34
	M C B T	M C B T	Nor. pine
	Nor. pine	Nor. pine	M C B T
	Diam. 8"	Diam. 12"	Diam. 10"
Bear. Due E	Bear. N 77 E	Bear. S 57 E	
Dist. approx. 35'	Dist. 60'	Dist. 1 1/4 chains	

GENERAL LOCATION

(Relation to other corners by alignment and measurement, also with topographic features, roads, streams, trails, fence corners or other distinctive objects which will enable others to locate. mention blazing done if any).

Smaller Norway will be washed from place on bank edge in a few years.

Surveyed 1926-27; Wm. Narrows controversy

.....C. B. STOTT.....  
Forest.....Chippewa.....  
Date Found.....7/25/29.....

11/10/70  
MEMORANDUM  
TO: [Illegible]  
FROM: [Illegible]

RE: [Illegible]  
[Illegible]

[Illegible text block]

[Illegible]	[Illegible]	[Illegible]
[Illegible]	[Illegible]	[Illegible]
[Illegible]	[Illegible]	[Illegible]
[Illegible]	[Illegible]	[Illegible]
[Illegible]	[Illegible]	[Illegible]
[Illegible]	[Illegible]	[Illegible]
[Illegible]	[Illegible]	[Illegible]

[Illegible text block]

[Illegible text block]

[Illegible text block]

[Handwritten mark]

U. S. DEPARTMENT OF AGRICULTURE

FOREST SERVICE

434200

Chippewa NATIONAL FOREST

CORNERS OF THE PUBLIC SURVEY

T. 147N R. 27W 5p Mer.

MC

Corner common to Sections

27, and 34

Corner consists of a GLO iron post ( ) in place

State condition brass cap, properly marked

Dimensions above ground 10 inches.

Sketch grooves, letters, figures, or notches, on proper face or edge.

CARDINAL POSITION

DIAGONAL POSITION

Cardinal position diagram grid

Diagonal position diagram grid

N W S E

NW SW SE NE

Mound of is located

Pits are located

Sketch markings of Bearing Trees (or Rocks) in proper box and fill blanks below, giving bearings from Corner to Trees and Distances in Links.

T147N R27W S 34

T147N R27W S 27

T147N R27W S34

Blank box

MCBT

MCBT

MCBT

Blank box

Species NP NP NP

Diameter 8" 12" 10"

Bearing Due E N 77 E S 57 E (Mag bears)

Distance approx 35' 60' 1 1/4 chs approx

Do you believe this to be a genuine Land Office Corner? Yes

If not, why?

C B Stoll

Signature.

F Ranger

Title.

5 7-24-29

Date.

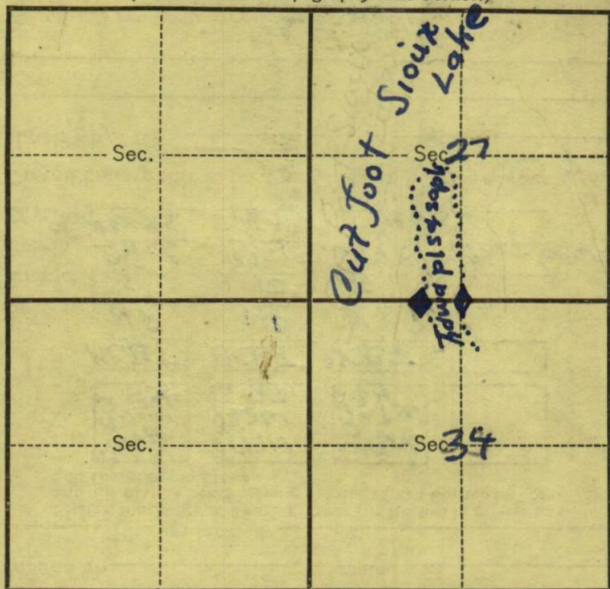
T 147N

R. 27W

5 p Mer.

8-3027

(Make sketch of topography near Corner.)



Metal Location Poster is on a None  
 tree - inches diameter, on the \_\_\_\_\_  
 side of \_\_\_\_\_  
 from which this Corner bears \_\_\_\_\_  
 \_\_\_\_\_ chains distant.

Give any further facts which will aid in finding this  
 Corner again.

Smaller Norway  
will be washed from place  
on bank edge in few years

Surveyed 1926-27

Write narrow controversy