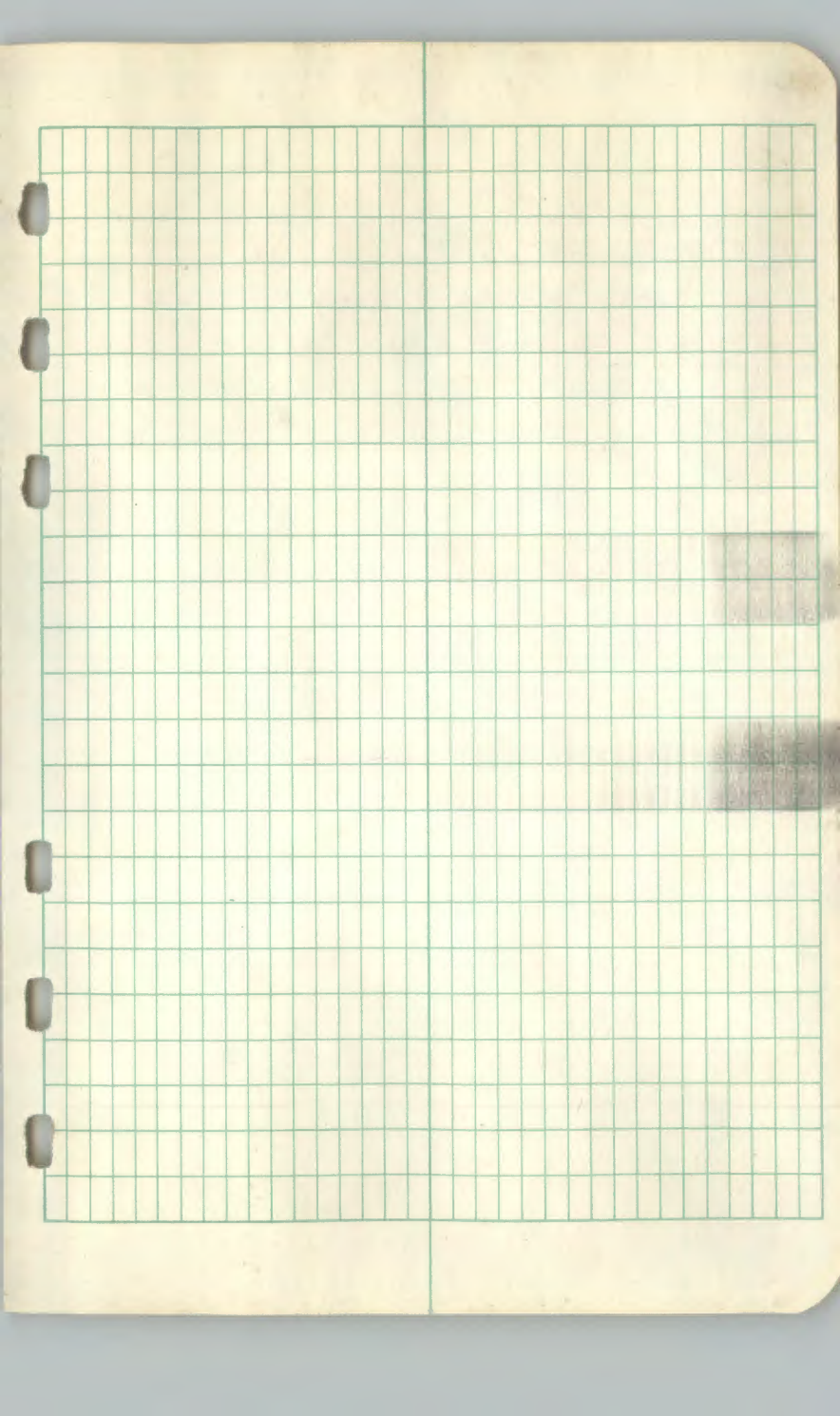


No. 302

*Get the Best*  
WEATHERPROOF

J. L. DANLINS CORP.  
FACSIMILE MARK U.S.A.



Note: Informed Johnny Sumshon  
that we would be performing  
survey bounding their  
property 1/17/80 L.M. B.O.

0+00

N<sup>1</sup>/<sub>4</sub> Cor Sec 8

4+50  
(+2+30)

10' offset E. + 30' offset

Pt ①

6+80  
(+4+90)

Pt ②

9+70

Pt ③

11+70  
+1+40

Pt ④

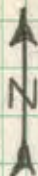
13+10  
(Bought  
Stadia)

to pt 3.35' E. of CN<sup>1</sup>/<sub>16</sub> Cor

Jan. 17, 1980  
cloudy, cold, calm

B. Olson x  
L. Methoett  
m. Hayes

T 141 N  
R 28 W



N<sup>1</sup>/<sub>4</sub> Cor Sec 8

20.57ch GLO Resurvey  
1357.62'

CN<sup>1</sup>/<sub>6</sub> Cor Sec 8

20.57ch GLO Resurvey  
1357.62'

Center <sup>1</sup>/<sub>4</sub> Cor Sec 8

40.00  
- 3.35'  
36.65

2

T191 R28  
sec 8STA. DIST. offset  
to T.L.0+00 ~~0.64~~

3+60 0.64E

1/20/80

6+30 1.11E

10+40 1.84E

13+58 2.40E  
+18

Jan. 18, 1979  
Cool, Calm, Sunny

B. Olson &  
L. Mithooft  
M. Hayes  
YACC

CN 1/6

CN 1/6 Cor Sec 8

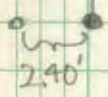
pt. 1

pt 2

pt 3

1357.62

Missed Center 1/4  
by 2.40' West



Center Cor Sec 8

3

T 191 R28

Sec 8

offset  
to T.L.

0

0+00

~~5+~~

0.37W

8+60

0.80W

13+30

1.24W

16+20

1.51W

18+30

1.71W

20+70

1.93W

24+00

2.24W

26+90

2.54W

26+90



Center 1/4 Cor  
GLO Mon

Center 1/4 Cor Sec 8  
GLO Mon.

pt ①

1362.24'  
20.64ch

pt ②

pt ③

pt ④

pt ⑤

pt ⑥

pt ⑦

37.02ch  
N89°15'W

1362.9'  
20.65ch

N0°28'E

89°43'

GLO Mon

S 1/4 Cor Sec 8

MC  
GLO  
Mon

S 1/4 Cor

Hit 2.54' East of  
GLO Corner on Random

4

T 141 sec R 28

offset  
to T.L.  
0

0+00

0.40s

1+40

(2+30)

1.07s

3+70

(4 3+40)

2.05s

7+10

(5+70)

3.70s

12+80

No. 302

W. L. DANLON CORP.  
WEATHERPROOF

J. L. DANLON CORP.  
TAMPA, FLORIDA 33604

Jan, 22, 1980  
Cold, clear, Calm

B. OLSON  
L. Mithgett  
C. LaFond  
J. Kelley  
R. Wilson  
A.

4

S 1/4 Cor

S 1/4 Cor Sec 8

pt ①

pt ②

pt ③

12,400'

12,800'

W 1/6 Cor

W 1/6 Cor S. Line Sec 8

Hit W 1/6 Cor 3.70' North  
of GLO Mon.  
1/23/80

5

TKH R 28  
Sec 17

	offset to T.L.
0+00	0
3+00	<u>0.20 W</u>
6+40	<u>0.43 W</u>
10+60	0.72 W
17+80	1.21 W
24+60	1.67 W
27+20	1.85 W

No. 302

Get the Best  
WEATHERPROOF

J. L. DARLING CORP.  
TACOMA, WASH. U.S.A.

JAN. 28, 1980

Very Cold, Clear, Calm

B. Olson &  
C. Minnowett  
YACC

5

W 1/6 GLO mon,

GLO Mon W 1/6

N89°15'W

GLO Mon  
C/A

pt ①

pt ②

pt ③

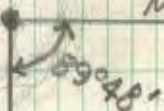
pt ④

pt ⑤

N0°33'E

91.26 ch

2723.16'



ISLAND  
LAKE

CW 1/6

38.94'  
0.59 ch  
GLO SMC N89°35'W

GLO Mon CW 1/6

Hit 125' E of GLO  
MON



6

# T 141 N R 30 W Section 7

STA (EDM MEAS.)	<del>EDM</del> MEAS.	VERT $\angle$	CORRECTION COR. DIST.	COR. DIST.
26+28.08		0°02'	—	2628.08

13+02.32		0°00'	—	1302.32
----------	--	-------	---	---------

0+00

No. 302  
 West of the River  
 WEATHERBROOK  
 J. L. SAMPSON CORP.  
 TACOMA, WASH. U.S.A.

Feb 1, 1980

Clear, Cold, Calm

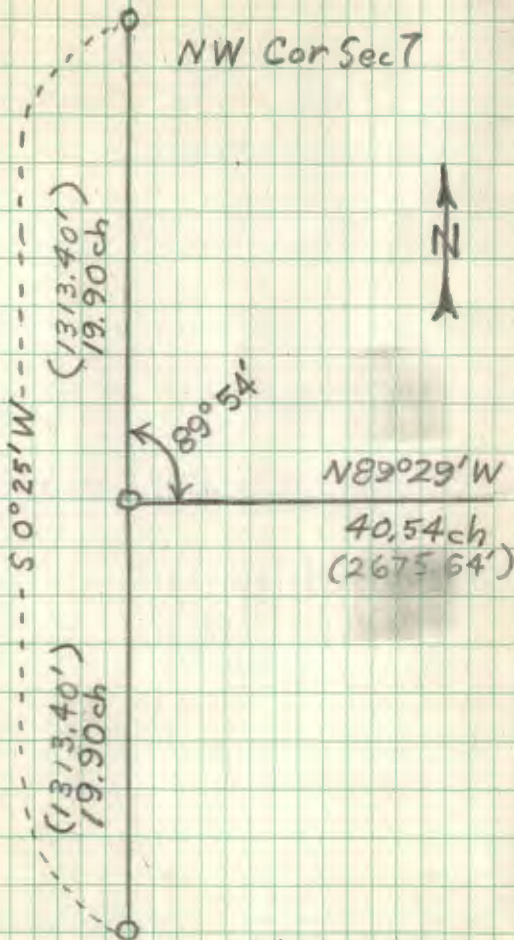
LIETZ theodolite  
H.P. EDM

B. OLSON &  
M. Hayes  
L. Withhoef  
J. Kelley

6

X/W Cor

NW Cor Sec 7



APPROX. 1/6

Set 1/6 Cor  
at 1304.04

Midway  
between  
NW Cor &  
1/4 Cor and  
on line  
between,

W 1/4

W 1/4 Cor Sec 7

7

T141N R30W  
Sec. 7

(STABIA)

STA

offset  
to T.L.

0+00

8.70' N

3+60

7.78N

5+90

7.20N

9+90

6.18N

13+20

5.27N

18+00

4.11N

19+90

3.63N

21+90

3.12N

26+70

1.88' N

6.82



Feb 1, 1980

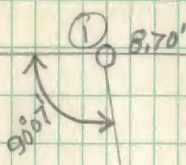
Clear, Cold, Calm

B. OLSON &  
M. HAYES  
L. WITHOEFF  
J. KELLEY

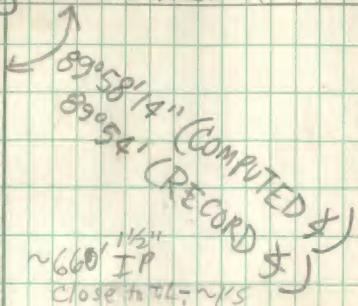


0 1/4" IP Lot Corner  
N 1/2 Cor Set by proportionate  
MEX S.  
← T.L. →

pt ①



pt ②



pt ③

pt ④

Feb. 4 B, LM, JK

pt ⑤

1/2 Steel Post FD.  
HIT POST  
ON RANDOM

Steel Post ~ 5' S. of T.L.

pt ⑥

pt ⑦

FD. 1 1/2" IP by Steel Post  
~ 660' from CN line ~ 3' S. of TL.

pt ⑧

CN 1/2

WE HIT 1.88' S. of  
CN 1/2 on Random,  
line at 90°07' from  
West Line. Compute

offsets to true line from this data.

T141N R27W  
Section 5

OFFSET  
TO T.L.

0

STA

0+00

2+60

5.27N

5+90

11.96N

~~10+00~~

~~9+90~~

20.27N

20.07N

13+00

+64'

26.31N

13+64

27.61N

Feb 13, 1980

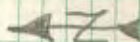
B. Olson

8

SW 1/6 Brass Cap Mon.

SW 1/6 Cor Sec 5

pt ①



pt ②

pt ③

20.6 ft ch  
1362.2'

pt ④

S 1/6 Brass Cap Mon.

HIT 27.61' S. of Brass Cap  
on Random

S 1/6 Cor on W. Line of  
Sec 5

9

T141N R27W  
Section 4

(STADIA)

STA

6+78

Offset  
to True Line

4.66'N

4+80

3.30'N

2+80

1.92'N

0+00

0

Feb 15, 1980

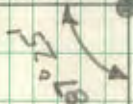
clear, cold, calm

B. Olson  
L. Wischwert  
J. Kelley  
J. Pettit

1/4 Cor  
~~SW~~

23.70 ch  
1564.2'

N0°17'E



1/4 Cor  
~~SW~~ Sec 4

GLO Mon  
Random hit 4,66' S & Cor



pt 2

N87°08'W

10,27 ch  
677.8'

W 1/4 Cor

GLO Mon. W 1/4 Cor Sec 4

80

T141N R27W  
Section 4

14

(By Stadia)

STA.Offset to  
True Line

15+60

0.72E

11+20

0.52E

7+30

0.34E

3+10

0.14E

0+00

0

Feb 19, 1979  
Snowy  
Cloudy, Calm, Cool

B. Olson  
L. Withnott  
J. Kelley

10

HIT 0.72' West of  
of Cor. on Random

1/64 Cor Sec 4 GLO Mon

pt ③

23,70 ft  
1568.2'

pt ②

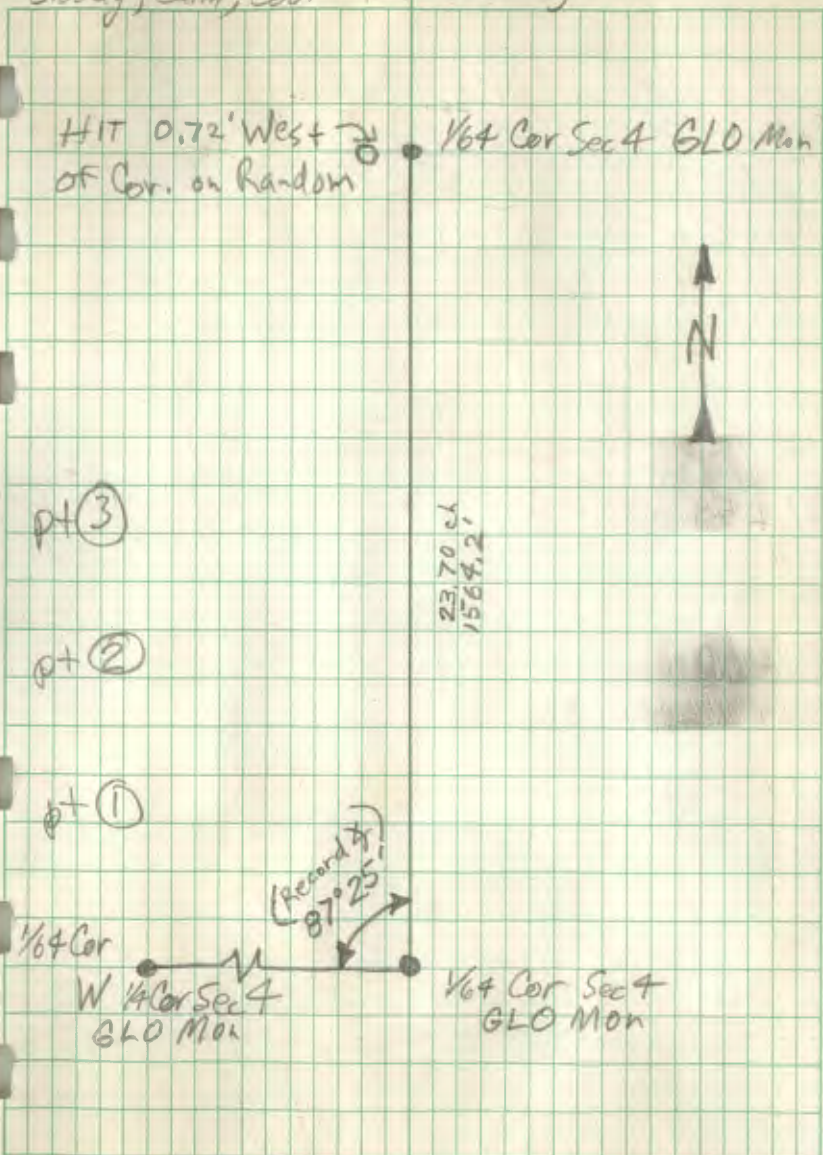
pt ①

1/64 Cor

W 1/4 Cor Sec 4  
GLO Mon

(Record  $\star$ )  
87° 25'

1/64 Cor Sec 4  
GLO Mon



T141N R27W  
Section 5

(STADIA)

STA

Offset  
to T.L.

0+00

0.37'E

3+80

+3+70  
+6+80

0.37'E

7+50

+8+10

0.73'E

10+60

1.03'E

13+70

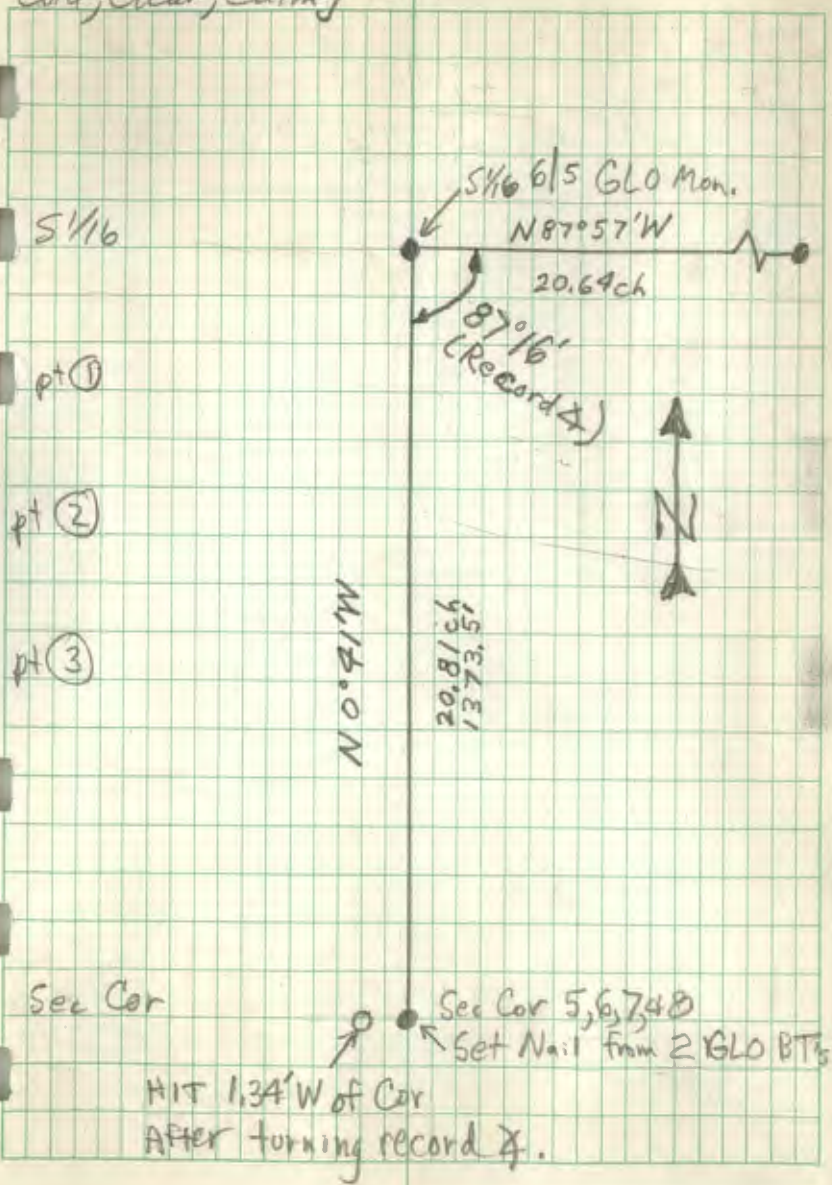
1.34'E



Feb., 25, 1980  
Cold, Clear, Windy

B. Olson  
L. Withcott

11



12

T141N R20W  
Section 7

(STADIA)

STA

offset  
to TIL

0+00

0

3+70

1.37E

6+75

2.51E

9+85

3.70E

13+30

4.96'E

2/28/80

Clear, Cold, Calm

B. Olson π  
J. Kelley  
J. [unclear]  
J. [unclear]

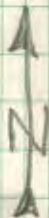
12

N 1/16 GLO Mon.

N88°02'W

19.57ch

pt ①



pt ②

~~pt ②~~

pt ③

+

N0°15'E

20.22ch  
1334.5'

49°59'

N87°46'W

W 1/4 Cor GLO Mon.

19.72ch

41+ 4.96' W, of Cor on Random

13

T141N R28W  
See 7

(STADIA)

STAoffset +  
to T.L.

0+60

0

H40

-

3+65

-

5+60

-

8+40

-

13+20

-

11+40

-

17+20

-

20+70

-

23+45

0.09's

F2+00

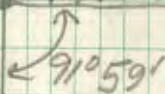
25+45

0.10's

W 1/4 Cor. BLO ma.

FW 1/4 Cor. Sec 7

pt ①



pt ②

pt ③

pt ④

pt ⑥

pt ⑤

pt ⑦

pt ⑧

pt ⑨

M. 27028 W

39.58 21  
2612.28

○ No Cor. Set by GLO for CW 1/4

W.C. on line  
HTO. 10' N

W. C. GLO MON

○ Actual pt for C 1/4 Cor

14

T14N R 28W  
Section 7(STADIA)  
STAOffset  
to T.L.

13+50

~~0.95'~~  
1.20' E

9+00

~~0.64'~~  
0.80' E

6+00

~~0.42'~~  
0.54' E

1+30

~~0.09'~~  
0.12' E

0+00

0

3/4/80

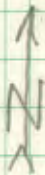
Cloudy, Cold, Windy

B. Olson  
J. Kelley

14

CN 1/6

HIT  $\frac{0.25'}{1.25'}$  West after turning record  $\downarrow$   
O ● CN 1/6 Cor



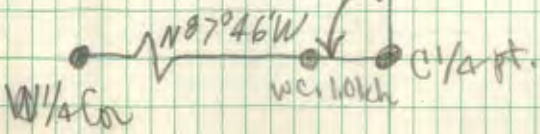
pt (3)

M 8E 0 N  
20.39 ch  
1345.7'

pt (1)

pt (2)

87° 08' →



15

T141NR2BW  
Sec 7

0+00

+

~~V O I D~~  
(Completed this line from opposite direction)



3/4/80

B. Olson

15

Very Cold, Windy

CN 1/10

CN 1/6

N 0° 38' W

C 1/4 Cor

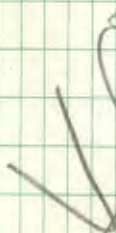
PT ①

92° 32' 36"

N 88° 02' W

15.71 ch

NW 1/4



16

T 141N R28W  
Section 7

(STADIA)

Offset  
to T.G.

STA

13+00

9+40

6+50

4+00

2+30

0+00

3/5/80

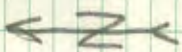
Cold, Clear, Calm

B. Olson &  
J. Kelley

16

NW 1/6 GLO Mon.

NW 1/6 Cor



pt ④

pt ③

pt ②

pt ①

N 88° 02' W

19.57 ch

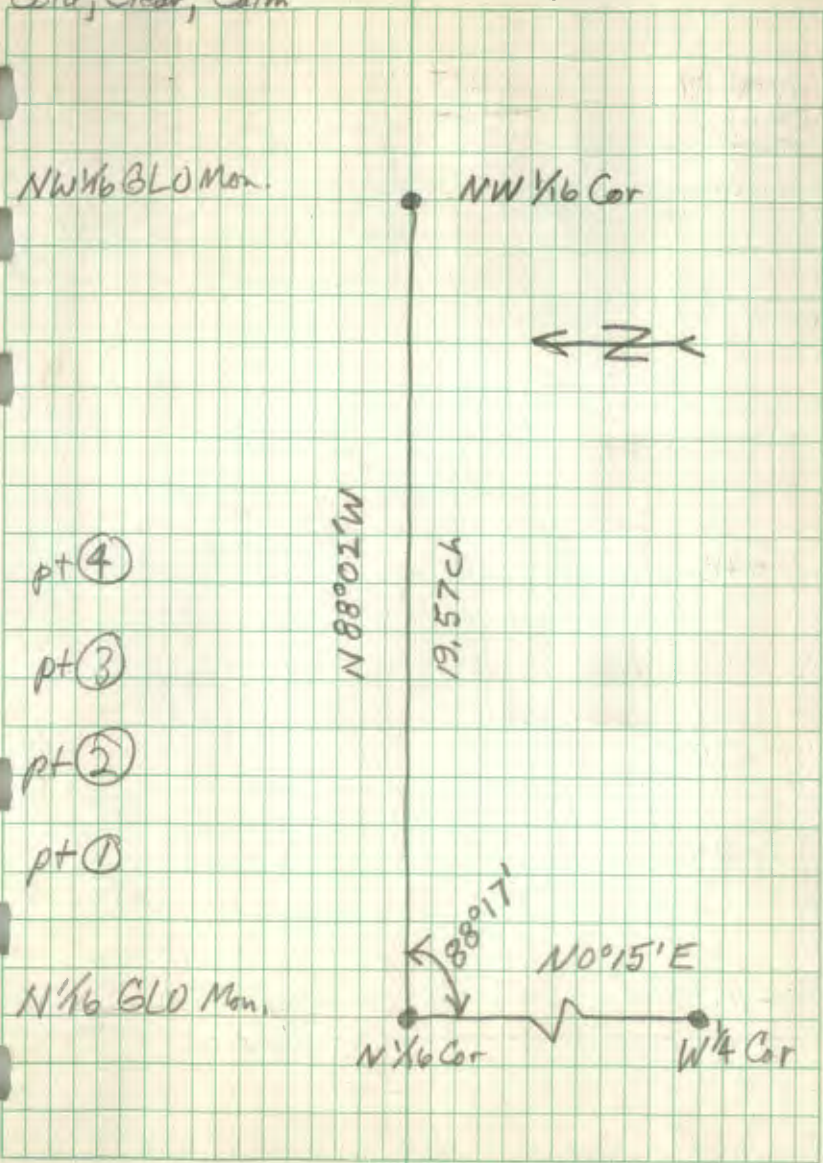
N 1/6 GLO Mon.

N 1/6 Cor

N 0° 15' E

W 1/4 Cor

88° 17'



17

T141N R285  
Section 7

(Stadia)	STA	Vert. $\chi$	STA @ Cor. Dist. offset to T.L.	offset to T.L.
	13+00	-	13+00	3.80's
	9+40	-	9+40	2.75's
	6+05	-	6+05	1.77's
	0+00	-	0+00	0

No. 302

Best in the World  
WEATHERPROOF

J. L. SAUNDERS CORP.  
TACOMA, WASH. U.S.A.

3/10/80  
Cold, Clear, Windy

B. Olson  
J. Kelley

17

CN  $\frac{1}{16}$  Cor

CN  $\frac{1}{16}$  Cor GLO Mon.

HIT 3.80' N of Cor

pt ②

N  $89^{\circ}02'W$  (Record)

19.71 ch (Record)



pt ①

NW  $\frac{1}{16}$  Cor

NW  $\frac{1}{16}$  Cor  
GLO Mon.

18

~~T145~~ +  
 T141 R28

Section 20

(By Stadia) (if over) Cor. Sta offset

STA    Vert. &    Station    to T.L.

26+65v — 40.50'E

+2+75

23+90 — 36.28'E

21+80 — 33.10'E

18+80 — 28.54'

14+20 — 21.56'

10+60 — 16.09'

8+30 — 12.60'

2+80 — 4.25'

0+00 — 0

3/14/80

B. Olson  
J. Kelley

18

P. Cloudy, Warm, Calm,  
Deep Snow

HIT 40.50' West  
of corner on  
RANDOM

N 1/4 Cor Sec 20  
Brass Cop



N 1/4 Cor

pt (5)

N 0° 35' E

40.42 ch  
2667.7'

pt (4)

pt (3)

pt (2A)

pt (2)

EXTRA PT (1A)

pt (1)

C 1/4 Cor

C 1/4 Cor Sec 20  
Brass Cop

19

T141N R28W

Section 20

(By Stadia) (<sup>it over</sup><sub>10°</sub>) Corrected offsetsSTA. Vert. & STA to T.C.

26+25 — 3.05'S

+ 3+30

22+95 — 2.66'S

19+65 — 2.28'S

13+45 — 1.56'S

11+35 — 1.32'S

8+45 — 0.98'S

4+70 — 0.55'S

1+95 — 0.23'S

0+00 0



3/17/80

B. Olson  
J. Kelley

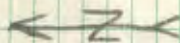
19

Clear, Warm, Deep Snow

HIT 3.05' NORTH OF Corner.

NE COR

NE Cor Sec 20  
Brass Cap



pt ⑦

pt ⑥

pt ⑤

pt ④

pt ③

pt ②

pt ①

N 88° 15' W

39.85 ch  
~~2266 ft~~  
2630.1

89° 06' (RECORD)

N 0° 35' E

N 1/4 Cor Sec 20

N 1/4 Cor Sec 20  
Brass Cap

Q 1/4 Cor  
Sec 20  
Brass Cap

20

T141 NR28W  
See 27

(if over 100)

<u>STA.</u>	<u>Vert</u> <del>X</del>	<u>COR.</u> <u>STA.</u>	<u>Offset</u> <u>to <u>line</u></u>
9+75	-		
9+40	-		
7+70	-		
6+80	-		
3+60	-		
0+00	-		

No. 302

 J. L. DARLING CORP.  
 WEATHERPROOF

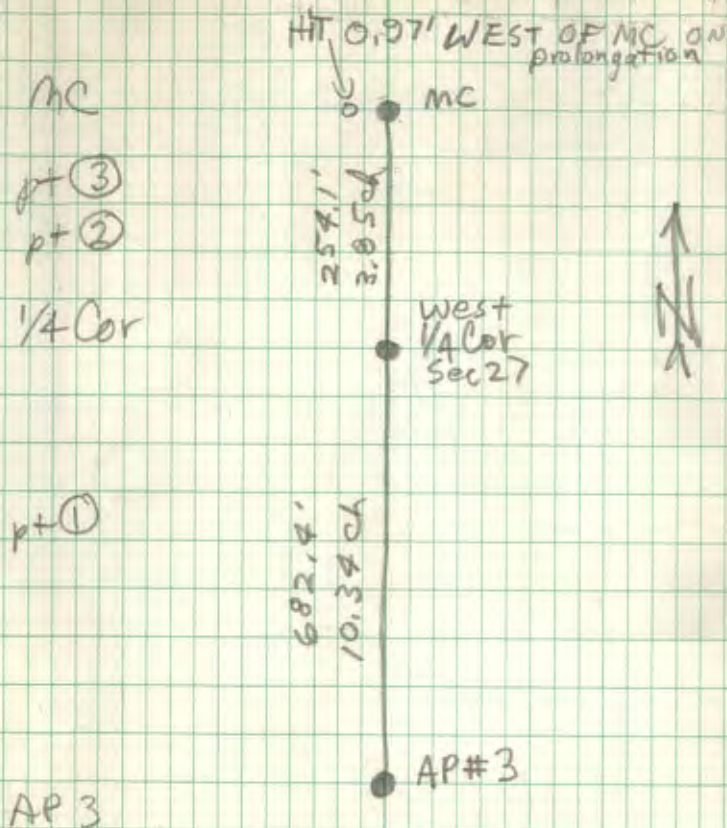
 J. L. DARLING CORP.  
 FACSIMILE MADE U.S.A.

3/25/80

Clear, Warm, Calm, Snow

B. Olson \*  
J. Kelley

20



21

(if over 10')

<u>STA</u>	<u>Vert</u> &	<u>Cor.</u> <u>STA</u>	<u>offset</u> <u>to T.I.</u>
12+95	-		0.59's

9+95	-		0.45's
------	---	--	--------

7+55	-		0.34's
------	---	--	--------

3+95	-		0.18's
------	---	--	--------

0+00	-		0
------	---	--	---

3/25/80

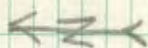
B. Olson

21

AP 4

HT 0.59' North of Corner

AP 4



pt (3)

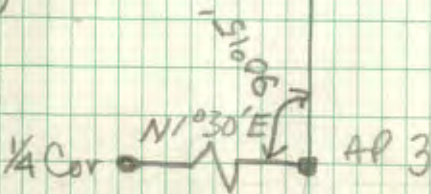
~~AP 4~~  
M 1.51088 N

49.78 ch  
130.55.5

pt (2)

pt (1)

AP 3



22

T 141 N R 28 W  
Section 27

<u>STA</u>	<u>Vert</u> &	<u>COR STA</u>	<u>offset to T.L.</u>
6+85	—		0.62' W
4+80	—		0.43' W
2+20	—		0.20' W
0+00	—		0

6+85

0.62' W

—

4+80

0.43' W

—

2+20

0.20' W

—

0+00

0

3/26/80

B. OLSON

22

Cldy., Calm, Warm

HIT 0.62' EAST OF CORNER

API CW 1/6  
TR 1635



API GLO MON. CW 1/6

TRACT 1635

N 0° 53' E

10,43.94  
688.44

pt ②

pt ①

89888'  
(RECORD)

AP 4 GLO MON.

AP 4 TR. 1635

AP 39  
N 88° 15' W



23

T141N R28W  
Section 27

(if overlap)

<u>STA.</u>	<u>Var &amp;</u>	<u>COR. STA.</u>	<u>offsets to T.L.</u>
-------------	------------------	------------------	----------------------------

13+00

0.68'N

-

8+00

0.42'N

-

3+60

0.19'N

-

0+00

0



3/26/80

B. Olson x

23

Center  $\frac{1}{4}$  Cor  
Q  $\frac{1}{4}$  Cor Brass Cap  
HIT 0.68' South of Corner

$580^{\circ} 25' E$

19.72 ch

1301.5'

pt ②

pt ①

CW  $\frac{1}{16}$  Brass Cap

CW  $\frac{1}{16}$   
(AP 1)

$89^{\circ} 18'$   
(RECORD)

$10^{\circ} 53' E$

10.43 ch

AP 4  
Brass Cap

24

T141N R28W  
Section 27

(By Stadia) (if over 100) offsets

STA. Vert & Cor STA to T, L

13+70

2.46' E

-

11+65

2.09' E

-

8+05

1.45' E

-

2+55

0.46' E

-

~~0+00~~

0+00

0 E

3/27/80

B. OLSON

24

Snowing, Warm, Calm

HIT

WEST OF CORNER

CN 1/16 Brass Cap

CN 1/16

pt (3)

pt (2)

pt (1)

N 0° 15' E

20.77 ch  
1370.8'



(RECORD) 88° 40'

588° 25' E

19.72 ch

CW 1/16  
Brass Cap

C 1/4 Brass Cap

25

T141N R28W  
Section 27

offsets  
to TL

13+65

0.18 E

9+60

0.13' E

6+45

0.08' E

2+20

—

0+00

—

220

3/27/80

B. OLSON # 25

HIT 0.18' WEST OF CORNER.  
0.20'

N 1/4 Cor Brass Cap

N 1/4 Brass Cap

pt (3)

pt (2)

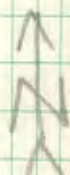
pt (1)

CN 1/16 Brass Cap

CN 1/16 Brass Cap



C 1/4 Brass



26

T141N R28W  
Sec. 27

(BY STADIA) (if overlap)

STA	vert $\chi$	Cor STA	offsets to T.L.
-----	-------------	---------	--------------------

8+20

1.00'W

—

7+00

0.85'W

—

2+05

0.25'W

—

0+00

0

3/31/80

Clear, Warm, Calm

B. Olson  
T. Kelley

26

HIT 1.00' EAST OF CORNER.

NW Sec Cor Sec 27

NW Cor Brass Cap

12.42 ch.  
8/27'

pt ②

pt ①

M.C. Brass Cap

M.C.

N 10° 30' E

25.12 ch  
1657.91'

Dist checked by  
STADIA

M.C.

254.1'

Dist checked by  
measurement 254.3'

W 1/4 Cor Sec 27

27

T141N R28W  
Section 27

by Stadia	(if over 10')	offsets	offsets	NOTE
STA	Vert. & Cor. STA	to	to T.L.	

0+00

0

2+20

2+20

0

Wiggled In On  
TRUE LINE

4+80

4+80

0

8+65

8+65

0.29's

10+25

12°  
+2°

10+20

0.41's

12+55

12+50

0.58's

~~13+15~~

No. 101

Weatherproof

J. L. GARLAND CORP.  
TACOMA WASH. U.S.A.



4/1/80

B. Olson  
J. Kelley

27

Clear, Warm, Calm

AP 3 Brass Cap

AP 3

pt ①

7.3' ch  
482.5'



NW 1/6 Brass Cap

NW 1/6

M. 88° 38' W

pt ②

11.69' ch  
770.9'

12.50

pt ③

M.C. Brass Cap

M.C.

H 10.58' NORTH



BOXEL LAKE

28

T141N R28W  
Section 27

if over 10° COR Offset

STA Vert % STA to T.L.

13+70 3.00'W

—

9+90 2.17'W

—

5+00 1.10'W

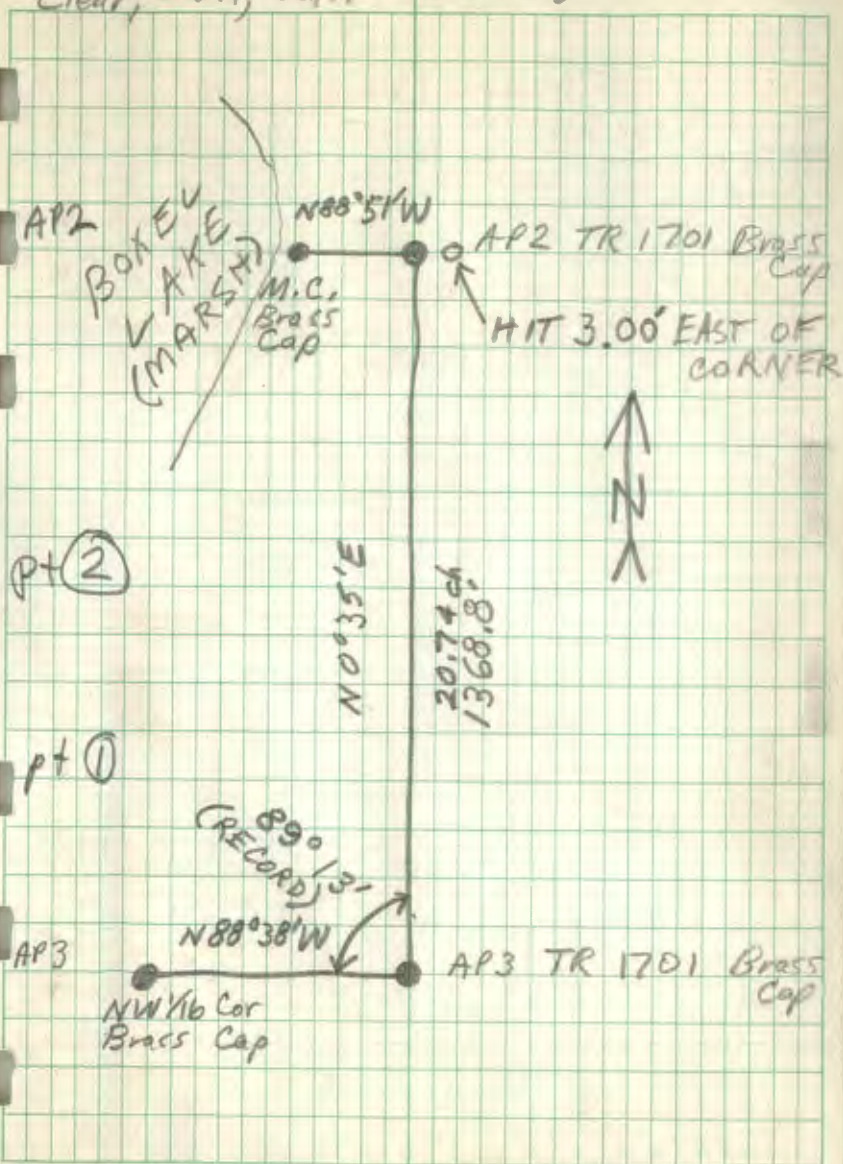
—

0+00 0

4/3/80  
Clear, Warm, Calm

B. Olson &  
J. Kelley

28



20

T141N R30W  
Section 12

STA

No. 392

W. L. DARLING CORP.  
WEATHER PROOF

W. L. DARLING CORP.  
TACOMA, WASH. U.S.A.

4/7/80

RAIN, WARM, CALM

B. Olson  
C. Withcott  
J. Kelley

29

E 1/4 Cor Sec 12

9.89 ch  
652.7'

AP

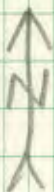
9.89 ch  
652.7'

S 1/16 Cor

N 0° 37' E  
39.56 ch  
2611.0'

19.78 ch  
1305.5'

SE Cor Sec 12  
BRASS CAP



30

T 141N R 30W

Section 12

<u>STA</u>	<u>(if over 10°)</u> <u>Vert &amp;</u>	<u>corr.</u> <u>STA.</u>	<u>Offsets</u> <u>to T.L.</u>
------------	---	-----------------------------	----------------------------------

~~7+80~~

~~5+95~~

~~2+35~~

~~0+30~~

0+00

VOID

(SEE PAGE 31)

No. 302

Get in the Rain  
WEATHERPROOF

J. L. DARLING CORP.  
TAMPA, FLORIDA, U.S.A.



31

T141N ~~R20~~ R30W

## Section 12

(by Stadia) (if over 10°) COR. Offsets

STA VERT.  $\angle$  STA. to T.L.

13+85      \*      1.69'S

—

10+50           1.29'S

—

7+80           0.96'S

—

3+20           0.39'S

—

0+00           0

No. 302

Bates & Co. Inc.  
WEATHERPROOFL. S. BARKER CORP.  
TACOMA, WASH. U.S.A.



4/17/80

B. Olson  
L. Withhoeff  
J. Kelley

31

HIT 1.69' NORTH OF CORNER

SE 1/6 COR  
BRASS CAP

→ Z →

pt ②

N 87° 06' W

20.91 ch  
1300.1

pt ①

TRACT  
1719

pt ①A

92° 17' (RECORD)

N 0° 37' E

S 1/6

SE Cor  
BRASS CAP

S 1/6 Cor  
BRASS CAP

AP  
BRASS CAP

32

T141N R28W

Section 28

(by Stadia) (if over 10°) COR. Offsets

STA Vert. % STA to T.L.

26+95 — 26+85 11.05'S

25+80 — 25+70 10.58'S

24+95 — 24+85 10.27'S

23+05 — — 9.49'S

20+95 — — 8.63'S

19+15 — — 7.88'S

15+75 — — 6.48'S

13+42 — — 5.53'S

13+00 — — 5.35'S

7+55 — — 3.11'S

2+60 — — 1.07'S

0+00 — — 0

4/9/80

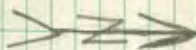
B. Olson

32

Cool, Snow, Windy

HIT 11.05' NORTH ON RANDOM

NW Cor. Sec. 28



NW COR

pt 9

pt 8

pt 7

pt 6

pt 5

pt 4

set pt for approx. 1/16

pt 3

pt 2

pt 1

N 1/4 Cor

N 89° 16' W

40.67 ch.  
2687.2'

APPROX W 1/16  
Set Tag on R. OAK  
SEC W of COR

N 1/4 Cor Sec 28

33

T141N R28W

Section 29

(by Stadia) (if over 10°) C&amp;R. Offsets

STA. Vert.  $\Delta$  STA. to T.L.

26+30 - 26+38 3.32'N

23+90 - 23+95 3.01'N

20+00 - 20+05 2.52'N

16+30 - - 2.10'N

13+10 - - 1.65'N

12+30 - - 1.55'N

9+30 - - 1.17'N

6+60 - - 0.83'N

4+80 - - 0.60'N

0+00 - - 0 ✓

4/15/80

B. Olson &  
C. KRAUSE  
L. Wittwoeff

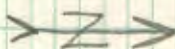
33

HIT 3.32' South of Corner.

N 1/4 Cor Sec 29

N 1/4 Cor <sup>1918</sup> Brass Cap

pt ⑧



pt ⑦

N 89° 00' W

39.98 ch  
2638.7'

pt ⑥

pt ⑤

pt ④

pt ③

pt ②

pt ①

NE Cor Brass Cap <sup>1918</sup> 180° 16' →  
(RECORD)

NE Cor, Sec 29

N 89° 16' W

49.67 ch

N 1/4 Cor Sec 28

34

T141N R 28W  
Section 29

(by Stadia)	(if over 100)	COR	OFFSETS
<u>STA</u>	<u>Vert</u>	<u>STA</u>	<u>TO T.L.</u>

24+30

7.06'N

23+10

6.72'N

19+10

5.53'N

15+60  
a+60

4.52'N

11+00

3.19'N

3+80

1.10'N

0+00

0

4/17/80

B. OLSON &  
E. KRAUSE

34

Clear, WARM, CALM

HIT 7.06' SOUTH ON RANDOM

W 1/4 Cor Sec 29

W 1/4 Cor

→ Z →

pt ④

pt ③

36.94ch  
2437.0'

pt ②

Set Stick ON LINE

pt ①

C 1/4 Cor Brass Cap

C 1/4 Cor Sec 29

35

T141N R28W  
SEC 29

STA (by Station)	(if over 10°) VERT. STA	COR STA	OFFSETS TOT. L.
27+55			7.11'W
21+30			5.52'W
16+90			4.38'W
14+60			3.78'W
9+60			2.49'W
6+60			1.71'W
3+10			0.80W
0+00			0



4/22/80

R. OLSON

35

Clear, Hot, Windy

HIT 7.11' EAST

NW Cor

NW COR SEC 29

pt ⑥ BACK ON LINE

pt ⑤ offset 0.80' W

pt ④ offset 0.80' W

pt ③ offset 0.80' W

pt ② offset 0.80' W

pt ①

W 1/4 Cor

W 1/4 Cor  
Sec 29

N 87° 45' W

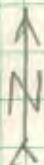
E 1/4 Cor  
Sec 29

N 7° 37' W

41.60 ch  
2745.6'

99° 05' 31"

(RECORD 4)



36

T141N R28W  
Section 22

<u>STA</u> (by Stadia)	<u>Vert &amp;</u> (if over 10')	<u>Cor</u> <u>STA</u>	<u>Offsets</u> <u>to T.L.</u>
0+00			0
2+85			0.12'E
6+40			0.26'E
7+60			0.31'E
12+60			0.51'E
+			0.54'E

0+00

0

2+85

0.12'E

6+40

0.26'E

7+60

0.31'E

12+60

0.51'E

+

0.54'E

4/24/80

B. OLSON  
R. Mustonen  
J. Kelley

86

pt ①

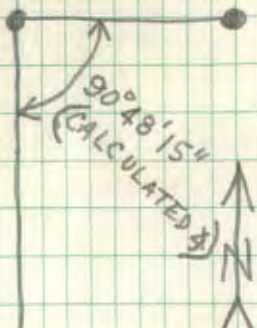
pt ②

pt ③

pt ④

S 1/4 Cor Sec 22

HIT 0.54' WEST OF CORNER.



37

T141N R28W  
SEC ~~18~~ 22

offsets

STA.TOTL.

67

25+50

2.87' N ✓

00

23+50

2.66' N ✓

21+60

2.41 ✓

19+30

2.15 ✓

17+30

1.93 ✓

14+60

1.63 ✓

12+85

1.43

NO POST

11+55

1.29

9+40

1.05 ✓

6+40

0.71 ✓

1+20

0.13

0+00

0

No. 302

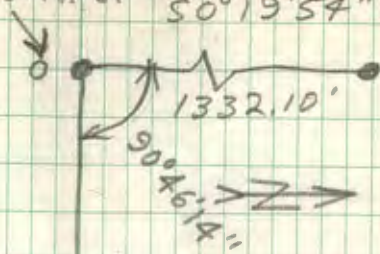
Get in the Rain!  
WEATHERPROOFJ. L. MARLING COOK  
TACOMA, WASH. U.S.A.

4/29/80

B. OLSON  
L. Witthoef

37

HIT 2.87' SOUTH OF NAIL  
50° 19' 54" W



- pt 9
- pt 8
- pt 7
- pt 6
- pt 5

N 88° 53' 52" W

2571.80'

1285.90'

Set pt for APPROX 1/6

- pt 4
- pt 3
- pt 2
- pt 1

CN 1/6

VOID

5+00

3+75

0+00

4/25/80

B. OLSEN  
C. WITHOEFT  
J. KELLEY

38

VOID

pt ①  
pt ②



39

T141N R28W  
SECTION 18

(by Stadia)	(if over 10)	COK	offsets
<u>STA</u>	<u>Vert X</u>	<u>STA</u>	<u>to T.L.</u>

0+00

0

2+25

1.23'E

4+85

2.65'E ✓

(6+85)

(3.75'E —

0+00

0

4+05

0.65'E ✓

6+85

0.07'E ✓

NOTE: Set Con Location Post 133' NORTH  
of COK  
on trail



4/28/80

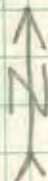
B. Olson  
J. Kelley

39

WE Head South on Random  
from the NW 1/4 COR.

NW 1/4 Brass Cap

NW 1/4 Cor



pt ① Lot 8

pt ②

6851'  
10.38ch

U.S. A. LAND

1/4 Cor Brass Cap  
HIT 3.75' WEST & CORRECTED

A1554

pt ①

N 30° 43' W

Lot 9

6857'  
10.39ch

U.S. A. LAND

CW 1/4 Cor

HIT 0.07' WEST OF CORNER.

40

T191N R28W  
Section 18

<u>STA</u>	<u>VERT</u>	<u>COR STA</u>	<u>OFFSETS TO T.L.</u>
0+00			0
2+50			—
4+20			—
6+30			—
7+55			0.14'N
11+30			0.21'N
12+55			0.23'N

No. 302

Get the Rain  
WEATHERPROOF

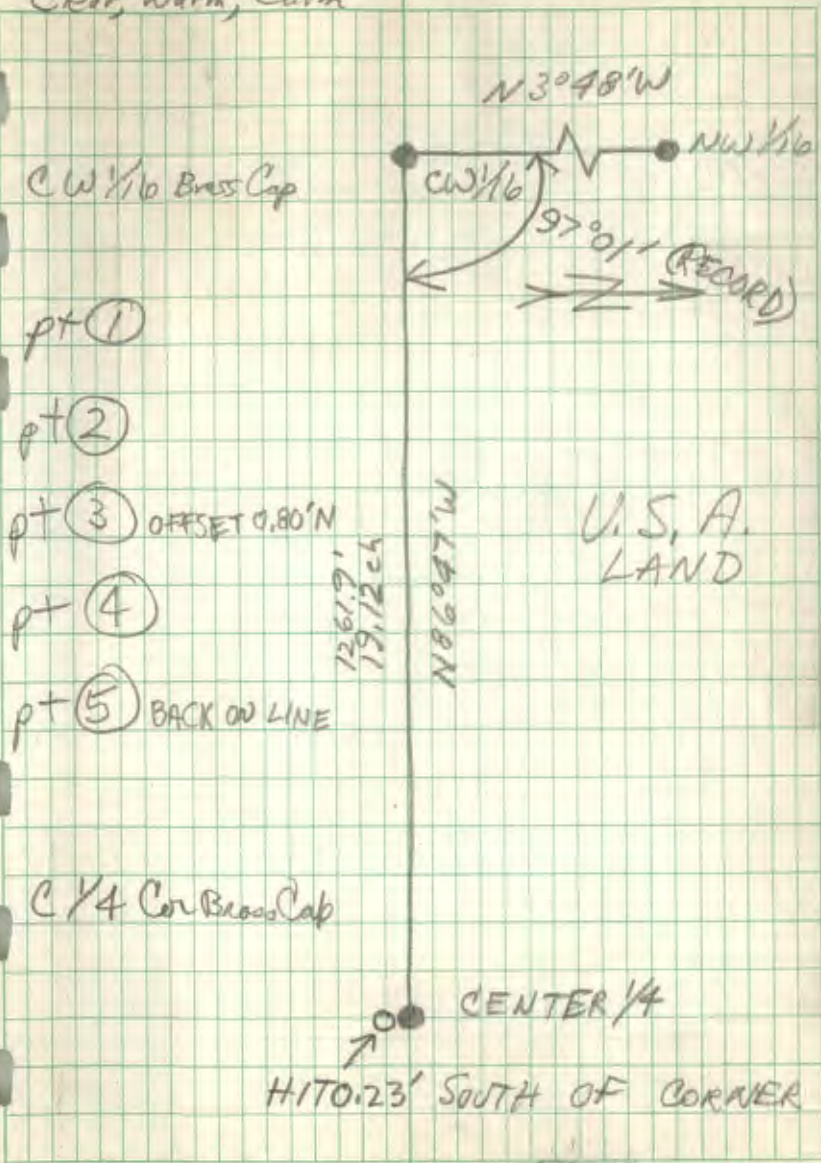
J. L. SAILING CO. INC.  
TAHOA, HAWAII, U.S.A.

4/23/80

Clear, Warm, Calm

B. OLSON  
J. KELLEY

40



1261.9'  
19.12 ch

N 86^{\circ} 47' W

U.S. A.  
LAND

CENTER 1/4

HITO. 23' SOUTH OF CORNER

~~86 47~~  
~~19 12~~  
~~9 35~~

41

T 141 N R 28 W  
Section 18

(by STA 1 A) (if over 10°) COR OFFSETS  
STA Vert. & STA TOT. L.

0+00

1+60

4+80

6+80

8+40

11+90

13+35

No. 302

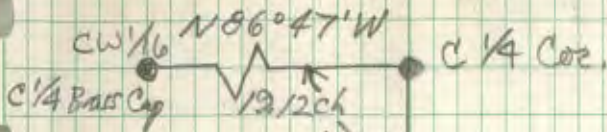
W. L. BARTLING CO. INC.  
WEATHERBROOK, MINN.

J. L. BARTLING CO. INC.  
TACOMA, WASH. U.S.A.

4/29/80

B. Olson  
J. Kelley

41



pt ①

pt ②

pt ③

A 1598

pt ④

pt ⑤

N 2° 15' W

20.10 ch  
1326.6'

U.S. A.  
LAND



APPROX CS 1/16

C.S. 1/16 Cor.  
TO BE SET

42

T 141 N R 28 W  
Section 18(by STADIA) (if over 10<sup>9</sup>) COR OFFSETSSTA    VERT    STA    TO T.L.

0+00

0 —

4+45

2.59' N ✓

6+25

3.64' N ✓

~~8~~  
8+05

4.69' N ✓

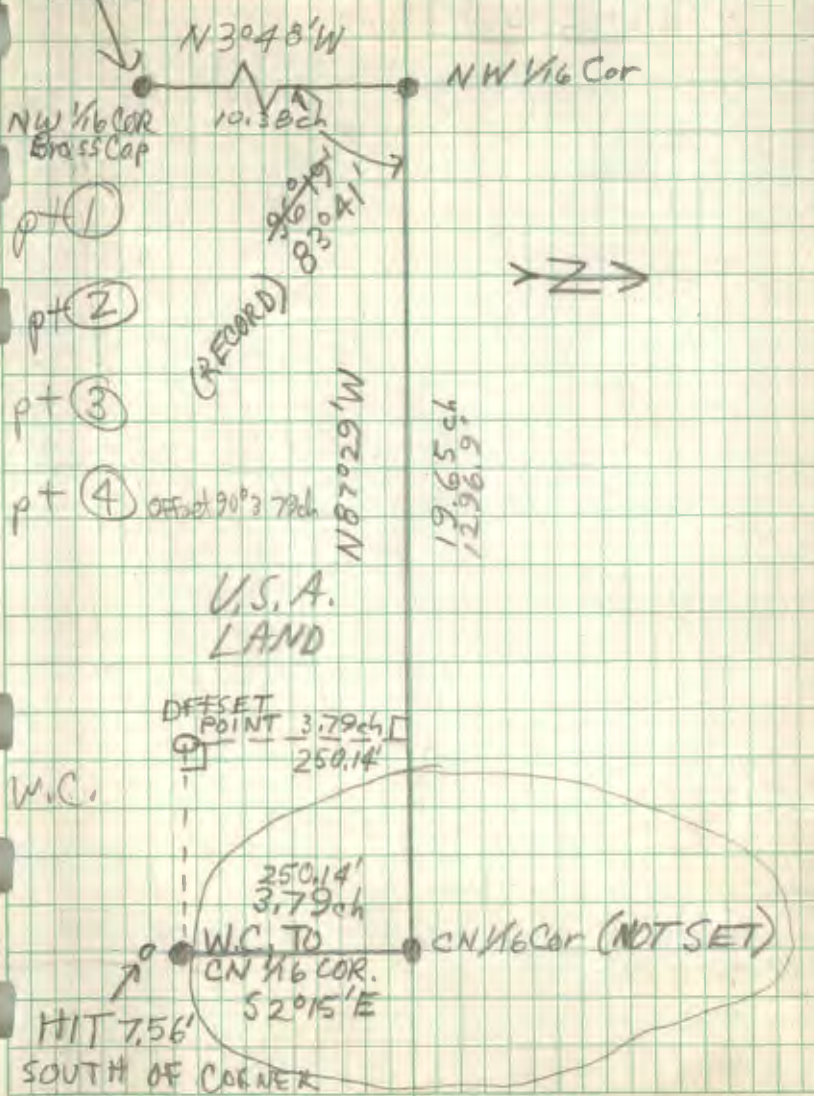
10+05  
+ 2+85

5.89' N ✓

12+90

7.56' N —

NOTE: BACKSITE IS 1,23' N. of T.L.



NOTE: IF BACKSITE WOULD HAVE BEEN ON T.L. WE WOULD HAVE HIT 0.46' SOUTH BY COMPUTATION. - B. OLSON

43

T 141 N R 28 W  
SECTION 18

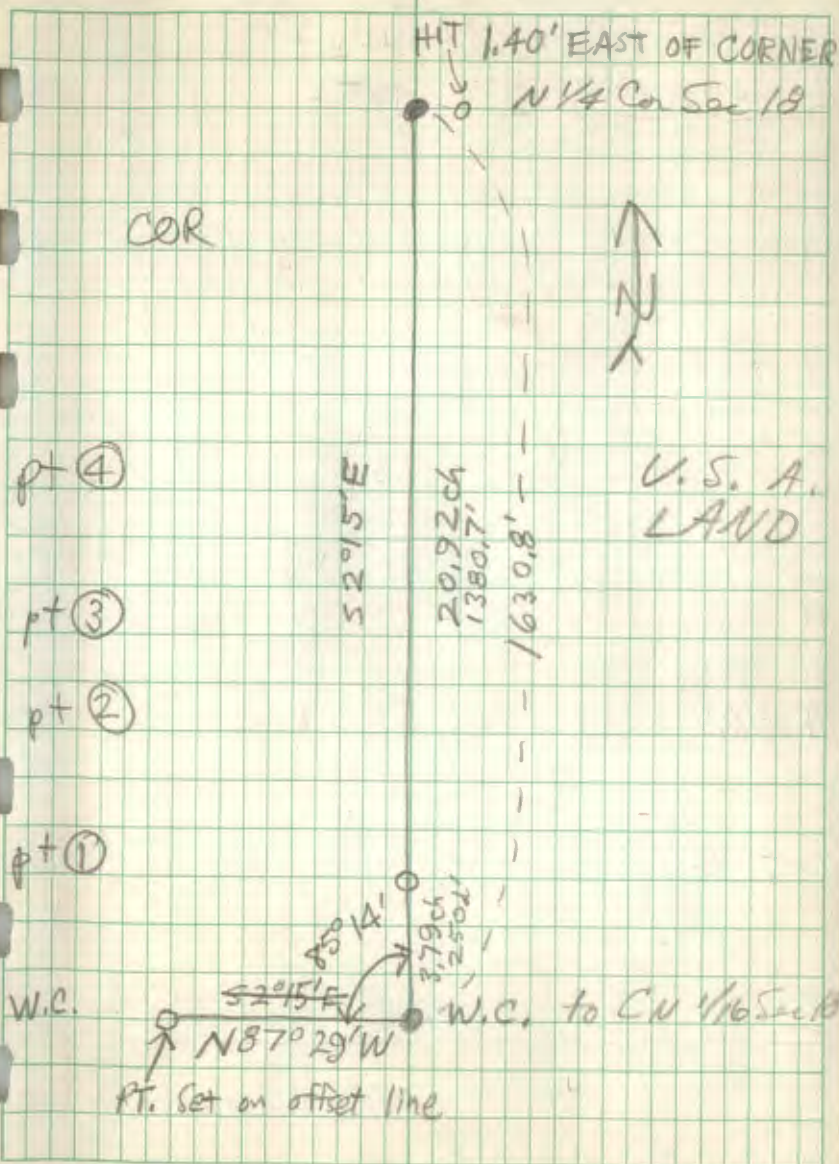
<u>STA</u>	<u>Vert X</u>	<u>COR STA</u>	<u>OFFSETS</u> <u>TOT. L.</u>
16+30	—		1.40' W +
15+20	—		1.31' W
12+70	—		1.09' W
9+80	—		0.84' W
5+80	—		0.50' W
0+00			0 —



5/1/80

B. Olson

43



44

T141N R28W  
Section 22

(by Stadia)	(if over 10°)	COR	OFFSETS
<u>STA</u>	<u>Vert</u>	<u>STA</u>	<u>TO T.L.</u>

13 + 35

0.25' E

8 + 85

0.18' E

8 + 10

0.15' E

4 + 85

0.09' E

2 + 70

—

0 + 00

0

5/6/80

D. HANSON &  
B. OLSON

44

pt 1/2 W

HIT  $0.25'$   
 ~~$2.58'$~~  WEST OF CORNER  
W $\frac{1}{4}$  COR Sec 22



PT (5) COR.

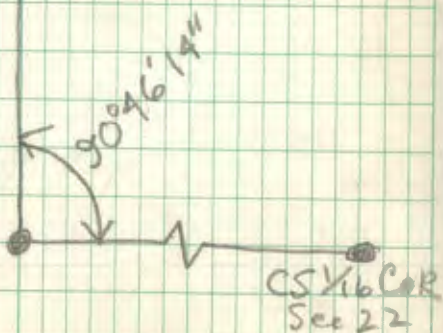
PT (4)

PT (3)

PT (2)

PT (1)

S $\frac{1}{16}$  COR Sec 22



CS $\frac{1}{16}$  COR  
Sec 22

45

No. 302

*W. H. B.*  
WEATHERPROOF

J. L. DANLINO CORP.  
TACOMA, WASH. U.S.A.

# SAFETY MEETING

4/29/80

## POINTS MADE:

- 1) FLOATING BOGS
- 2) HORNETS
- 3) MELANIE GACKSTETTER GET  
A BEE STING KIT
- 4) HEAT EXHAUSTION
- 5) DONT BRUSH TOO CLOSE TOGETHER

## 4"X4" WOOD POSTS SET:

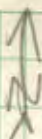
5/15/80 - Set Post 300' EAST OF CS#16  
S. 22 T141 R28

J. L. BARLING CORP.  
TAGONGA, WASH. U.S.A.

*Write in the Rain*  
WEATHERPROOF

No. 302

2/26/80 B. Olsen



Temporary Ties to set Cor

7141 R27

4x 4 S.P.

36.06'

5" Oak  
Double Hook  
& Nail

SW Cor Sec 5

5.55'

3" Twin Oak  
Double Hook  
& Nail

We Set  
Nail from  
2 GLO BT'S

Cut out old  
GLO BT  
scrubbing visible  
MKD: { T 141 N R27

J. L. BARLING CORP.  
TACOMA WASH U.S.A.

*Put in the Rain*  
WEATHERPROOF

No. 302



$$\begin{array}{r}
 1313.40 \\
 1313.40 \\
 \hline
 2626.80
 \end{array}$$

$$\begin{array}{r}
 2628.08 \\
 2626.80 \\
 \hline
 1.28
 \end{array}$$

$$2 \overline{) 2628.08}$$

$$\begin{array}{r}
 1314.04 \\
 -1302.32 \\
 \hline
 11.72
 \end{array}$$

$$\begin{array}{r}
 0.0029 \\
 2437 \overline{) 706000} \\
 \underline{4874} \\
 21860 \\
 \underline{21931}
 \end{array}$$

$$\begin{array}{r}
 25 \overline{) 2315} \\
 \underline{2315} \\
 0.0029 \\
 \hline
 \hline
 \end{array}$$

$$\begin{array}{r}
 0. \\
 2430 \overline{) 2319} \\
 \underline{2}
 \end{array}$$

$$\begin{array}{r}
 2315 \\
 0.0029 \\
 \hline
 20835 \\
 4630 \\
 \hline
 6.7235
 \end{array}$$

Milo Stephan - RLS.

Mike Hayes - S.O.

Curt Krause - Cass Lake

Ron Olesen - Deer River

Jeff Allison - Blackduck

Gary Brama - Cass Lake

CLYFF HILL - S.O., RLS?

RLS 11246

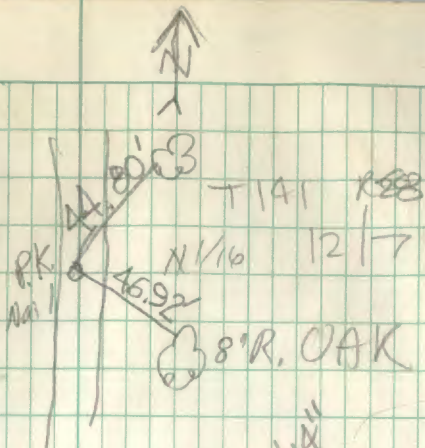
566-1357 Roger Mustonen - Longeville

675-6697 Walt Curo - Hackensack

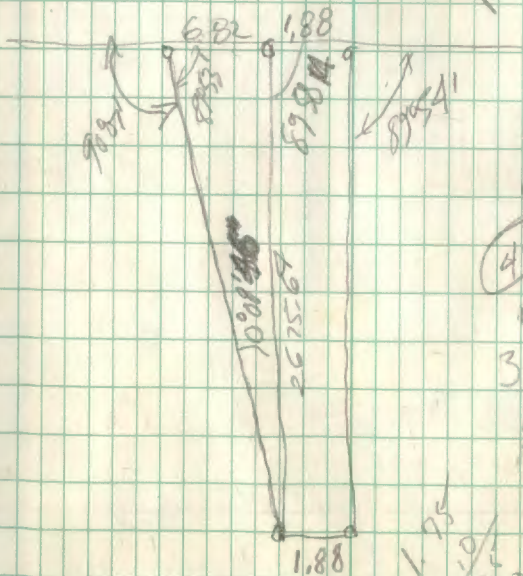
BILL SPANN - "

$$\frac{\sin 87.5^\circ}{268.69} = \frac{\sin 4}{682}$$

0857



$$\text{Pct} = 0.004124$$



$$\begin{array}{r} 8.70 \\ - 1.88 \\ \hline 682 \end{array}$$

(44)

$$\begin{array}{r} 1 \\ 3 \\ 4 \\ \hline 7+1 \end{array}$$

$$\begin{array}{r} 1.75 \\ 2.10 \\ 3.44 \\ 5.50 \\ \hline 13.79 \end{array}$$

offset

④ 140'

3.78

③ 340'

9.18'

36.65  
40

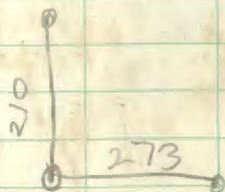
② 530' 630

17.00'

① 760' 860

23.21

16.98



40  
36.65

0+00  
6+05 ①  
9+40 ②