

CADASTRAL  
SURVEYS

NEZON  
FIELD

MINING  
TRANSIT BOOK

No. 122

BOOK NO. 10

CADASTRAL SURVEYS BOOK 10

CADASTRAL FIELD BOOK #11  
T147 146 R27W  
1958 SAM BENZING <sup>F.S.</sup> CONTRAC



# EUGENE DIETZGEN CO.

DRAWING MATERIALS, MATHEMATICAL and  
SURVEYING INSTRUMENTS

Chicago New York San Francisco New Orleans Pittsburg Toronto

Distances from Center of Roadway for Cross-Sectioning  
Roadway 16 feet wide. Side Slopes 1 on 1.  
For Single Track Embankment.

H	0	.1	.2	.3	.4	.5	.6	.7	.8	.9	H
0	8.0	8.1	8.2	8.3	8.4	8.5	8.6	8.7	8.8	8.9	0
1	9.0	9.1	9.2	9.3	9.4	9.5	9.6	9.7	9.8	9.9	1
2	10.0	10.1	10.2	10.3	10.4	10.5	10.6	10.7	10.8	10.9	2
3	11.0	11.1	11.2	11.3	11.4	11.5	11.6	11.7	11.8	11.9	3
4	12.0	12.1	12.2	12.3	12.4	12.5	12.6	12.7	12.8	12.9	4
5	13.0	13.1	13.2	13.3	13.4	13.5	13.6	13.7	13.8	13.9	5
6	14.0	14.1	14.2	14.3	14.4	14.5	14.6	14.7	14.8	14.9	6
7	15.0	15.1	15.2	15.3	15.4	15.5	15.6	15.7	15.8	15.9	7
8	16.0	16.1	16.2	16.3	16.4	16.5	16.6	16.7	16.8	16.9	8
9	17.0	17.1	17.2	17.3	17.4	17.5	17.6	17.7	17.8	17.9	9
10	18.0	18.1	18.2	18.3	18.4	18.5	18.6	18.7	18.8	18.9	10
11	19.0	19.1	19.2	19.3	19.4	19.5	19.6	19.7	19.8	19.9	11
12	20.0	20.1	20.2	20.3	20.4	20.5	20.6	20.7	20.8	20.9	12
13	21.0	21.1	21.2	21.3	21.4	21.5	21.6	21.7	21.8	21.9	13
14	22.0	22.1	22.2	22.3	22.4	22.5	22.6	22.7	22.8	22.9	14
15	23.0	23.1	23.2	23.3	23.4	23.5	23.6	23.7	23.8	23.9	15
16	24.0	24.1	24.2	24.3	24.4	24.5	24.6	24.7	24.8	24.9	16
17	25.0	25.1	25.2	25.3	25.4	25.5	25.6	25.7	25.8	25.9	17
18	26.0	26.1	26.2	26.3	26.4	26.5	26.6	26.7	26.8	26.9	18
19	27.0	27.1	27.2	27.3	27.4	27.5	27.6	27.7	27.8	27.9	19
20	28.0	28.1	28.2	28.3	28.4	28.5	28.6	28.7	28.8	28.9	20
21	29.0	29.1	29.2	29.3	29.4	29.5	29.6	29.7	29.8	29.9	21
22	30.0	30.1	30.2	30.3	30.4	30.5	30.6	30.7	30.8	30.9	22
23	31.0	31.1	31.2	31.3	31.4	31.5	31.6	31.7	31.8	31.9	23
24	32.0	32.1	32.2	32.3	32.4	32.5	32.6	32.7	32.8	32.9	24
25	33.0	33.1	33.2	33.3	33.4	33.5	33.6	33.7	33.8	33.9	25
26	34.0	34.1	34.2	34.3	34.4	34.5	34.6	34.7	34.8	34.9	26
27	35.0	35.1	35.2	35.3	35.4	35.5	35.6	35.7	35.8	35.9	27
28	36.0	36.1	36.2	36.3	36.4	36.5	36.6	36.7	36.8	36.9	28
29	37.0	37.1	37.2	37.3	37.4	37.5	37.6	37.7	37.8	37.9	29
30	38.0	38.1	38.2	38.3	38.4	38.5	38.6	38.7	38.8	38.9	30
31	39.0	39.1	39.2	39.3	39.4	39.5	39.6	39.7	39.8	39.9	31
32	40.0	40.1	40.2	40.3	40.4	40.5	40.6	40.7	40.8	40.9	32
33	41.0	41.1	41.2	41.3	41.4	41.5	41.6	41.7	41.8	41.9	33
34	42.0	42.1	42.2	42.3	42.4	42.5	42.6	42.7	42.8	42.9	34
35	43.0	43.1	43.2	43.3	43.4	43.5	43.6	43.7	43.8	43.9	35
36	44.0	44.1	44.2	44.3	44.4	44.5	44.6	44.7	44.8	44.9	36
37	45.0	45.1	45.2	45.3	45.4	45.5	45.6	45.7	45.8	45.9	37
38	46.0	46.1	46.2	46.3	46.4	46.5	46.6	46.7	46.8	46.9	38
39	47.0	47.1	47.2	47.3	47.4	47.5	47.6	47.7	47.8	47.9	39
40	48.0	48.1	48.2	48.3	48.4	48.5	48.6	48.7	48.8	48.9	40

**Example**—If point is 22.6 ft. above grade, how far should it be from center line to be a slope stake point? Ans. from Table 30.6. For same slopes but other widths of roadbed, correct above figures by one-half difference in width of roadbed; thus in example above, for 20 ft. roadbed distance will be  $30.6 + (20 - 16) \div 2$  or 2 ft. added to 30.6 = 32.6. For slopes of 1 on  $1\frac{1}{2}$  see inside of back cover.

Copyright, 1914, by Eugene Dietzgen Co.

IF LOST RETURN TO:

FOREST SUPERVISOR

CHIPPEWA N.F.

CASS LAKE, MN

The paper stock of this book is made of a high grade 50% rag paper having a water resisting surface and is sewed with Bing Special Enamel Waterproof Thread.

Made in U. S. A.



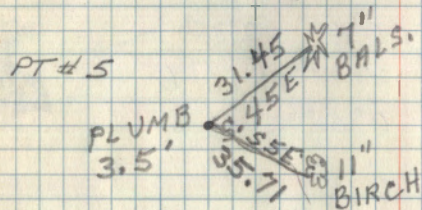
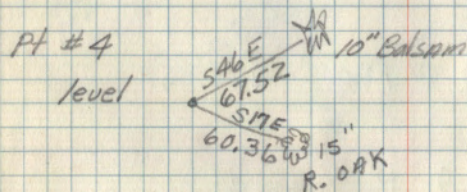
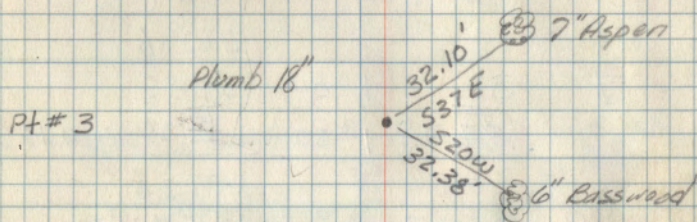
# Cadastral Surveys Book #10

	Pages
Main Traverse Loop #1 thru #41	1-6
#41 thru #67	14-17
South Loop 1/4 34-35 to Sec. Cor. 34-35	6-7
Sec Cor. 34-35 to PT#15 Main Loop	19-21
North Loop.	22-24
County 40	25-26
1/4 Sec. 33	24



## Main Traverse Loop

Sta	Sta	Slope	Ver. Δ	Hor Dist	
1	SC 32/33	19.5	0°00		Copied from angle book
SC 33/33	1	12.0 7.5	0-00 0-00		
1	2	504.05	93-44	503.0 ✓	
2	3	230.20	92-13	230.0 ✓	

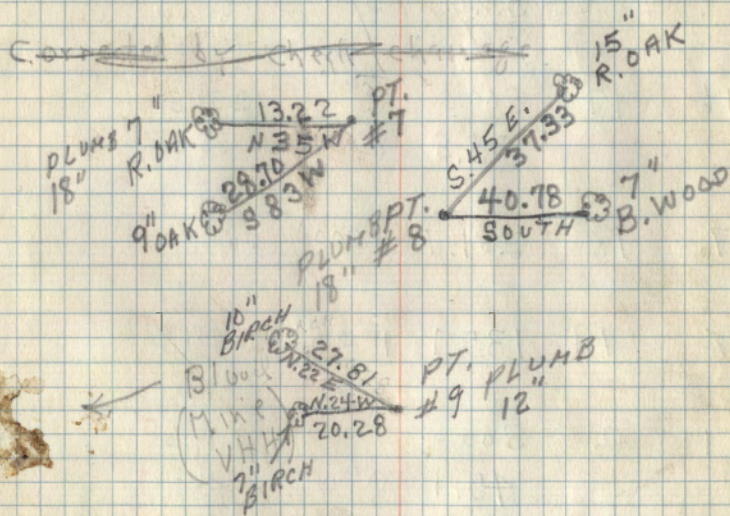




## Main Traverse Loop

Sta	Sta	Slope	Ver L	Hor Dist
3	4	300.0	2° 15'	299.75
		292.5	2° 15'	292.25
				592.00
4	5	260.3	2° 15'	260.1 ✓
5	6	300.0	2° 30'	299.7 ✓
		62.9	2° 00'	62.9 ✓
				362.6 ✓
6	7	300.0	1° 00'	299.95
		<del>272.25</del>	1° 00'	<del>272.25</del> - 0.15
				387.20 ✓
7	8	207.7	0° 00'	207.7 ✓
8	9	222.1	1° 00'	222.05 ✓
9	10	300.0	3° 00'	299.6 ✓
		213.0	0° 00'	213.0 ✓
		253.6		512.6 ✓
10	11	<del>258.6</del>	0° 00'	253.6 ✓
11	12	300.0	1° 00'	299.95 ✓
		185.0	3° 15'	184.70 ✓
				484.65 ✓

June 4, 1975

Neil Ramsey  
Curt Krause  
Vic Hedman



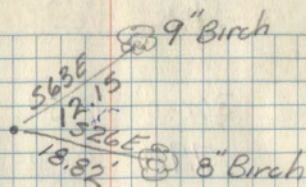
## Main Traverse Loop

Sta	Sta	Slope	Ver L	Hor DISTANCE
12	13	300.0	2°15'	299.75 ✓
		54.6	0°00'	54.60 ✓
				354.35 ✓
13	14	237.5	2°10'	237.3 ✓
14	15	189.65	2°30'	189.55 <sup>45</sup> ✓
15	16	300.0	4°45'	298.95 ✓
		53.05	0°00'	53.05 ✓
				352.00 ✓
16	17	300.0	3°00'	299.6 ✓
		35.8	0°00'	35.8 ✓
				335.4 ✓
17	18	231.7	1°00'	231.65 ✓
18	19	135.7	1°25'	135.65 ✓
19	20	300.0	3°00'	299.6 ✓
		45.1	0°00'	45.1 ✓
				344.7 ✓
20	21	177.25	1°25'	177.2 ✓
21	22	263.6	3°40'	263.05 ✓

3

PT#13

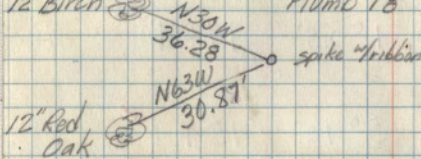
level



PT#15

12" Birch

Plumb 18"

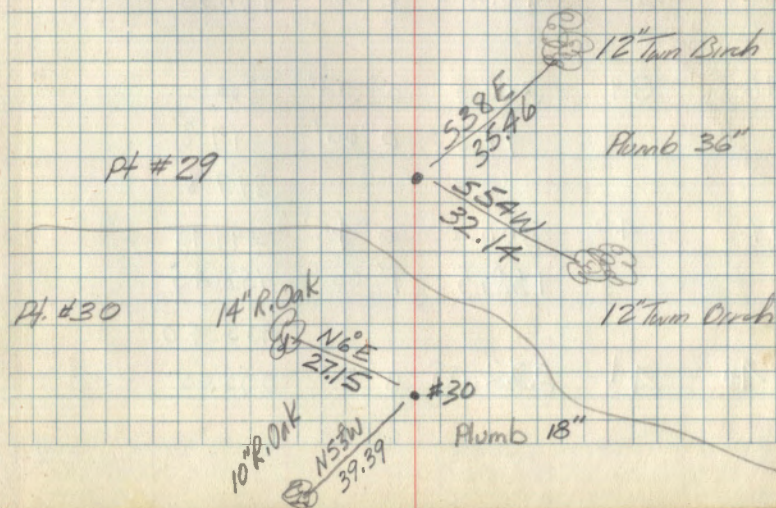




## Main Traverse Loop

Sta	Sta	Slope	Ver L	Hor Dist
22	23	300.0	1°30'	299.9 ✓
		79.1	0-00	79.1
				379.0 ✓
23	24	128.55	1°30'	128.5 ✓
24	25	194.15	1°25'	194.1 ✓
25	26	155.55	5°10'	154.9 ✓
26	27	225.0	2°00'	224.85 ✓
		140.1	0°00'	140.10
				364.95 ✓
27	28	300.0	2°30'	299.70 ✓
		254.6	1°00'	254.55 ✓
				554.25 ✓
28	29	300.0	0°30'	300.0 ✓
		68.1	0-00	68.1 ✓
				368.1 ✓
29	30	300.0	0°15'	300.0 ✓
		91.1	0-00	91.1 ✓
				391.1 ✓
30	31	203.2	3°20'	202.85 ✓

June 5, 1975





## Main Traverse Loop

5

Sta	Sta	Slope	Ver L	H. Dist
31	32	192.0	1°10'	191.95 ✓
<del>32</del>	33	222.95	0°55'	222.9 ✓
33	34	143.4	2°00'	143.3 ✓
34	35	211.15	1°40'	211.05 ✓
35	36	300.0	1°00'	299.95
		54.6	0°00'	54.60
				354.55 ✓
36	37	300.0	0°15'	300.0
		172.45	0°00'	172.45
				472.45 ✓
37	38	161.85	0-00	161.85 ✓
38	39	300.0	0°30'	300.0
		17.8	0°00'	17.8
				317.8 ✓
39	40	300.0	0°45'	299.95
		158.5	1°00'	158.45
				458.40 ✓
40	41	222.05	0°00'	222.05



Main Traverse Loop

Sta	Sta	Slope	Ver L	H. Dist
41	42	300.0	1° 25'	299.9
		161.6	1° 00'	161.55
				461.45 ✓
41	1/4 cor	63.9	1° 00'	63.9
		51.2	0-00	51.2
				115.1 ✓
1/4 cor	41	87.0	0-00	87.0
		28.1	0-00	28.1
				115.1 ✓

South Loop

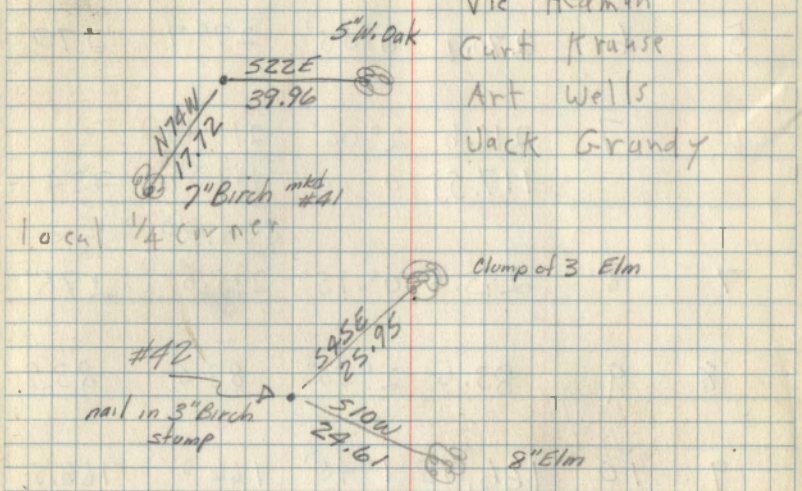
41	1	145.45	3° 30'	145.15	145
1	2	243.4	1° 00'	243.35	243
2	3	257.45	2° 30'	257.2	257
3	4	300.0	0° 00'	300.0	
		34.4	0° 00'	34.4	334
				334.4 ✓	
4	5	300.0	0° 30'	300.0	
		64.35	0-00	64.35	364
				364.35 ✓	

Rough change

pt #41

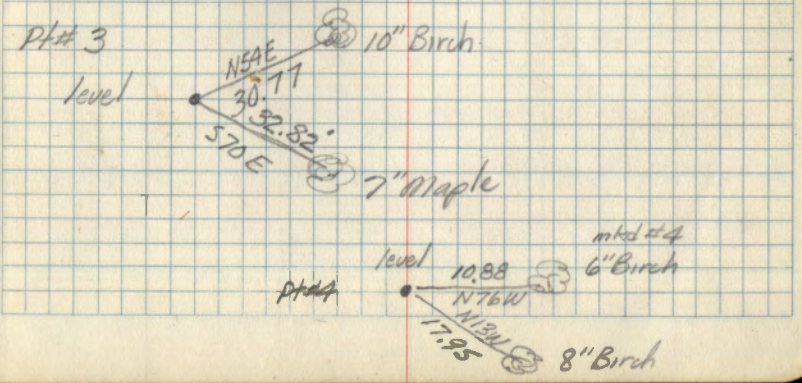
June 6, 1975

Vic Hedman  
Curt Krause  
Art Wells  
Jack Grundy



Stal traverse to SE section corner

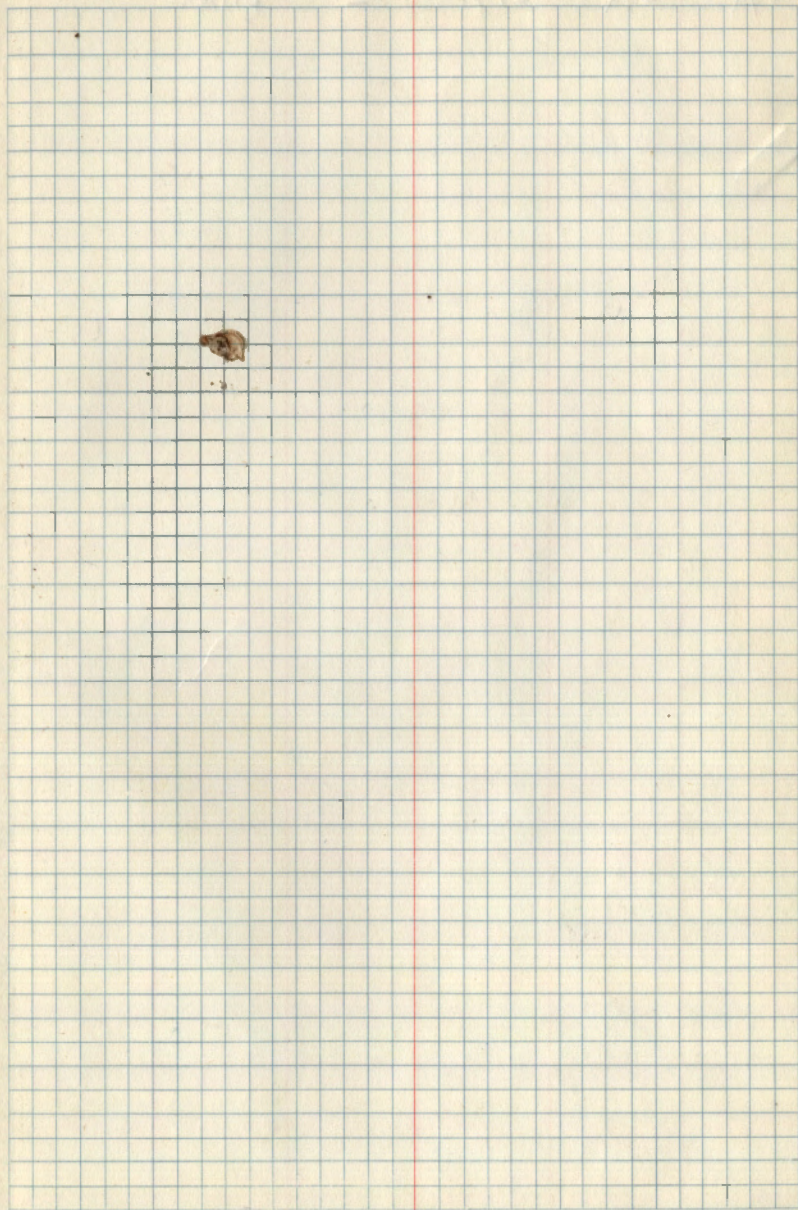
pt #3





South Loop

Sta	Sta	Slope	Ver L	Hor Dist	
5	6	270.7	0°35'	270.7	270
6	7	216.6	2°00'	216.45	✓
		117.55	0-∞	117.55	✓ 334
				334.00	✓
7	8	295.6	0°-15'	295.6	296
8	9	83.6	2°30'	83.5	83.5
9	10	166.05	1°45'	166.0	✓ 166.5
10	<sup>5c</sup> 3435	177.15	0°35'	177.15	✓ 177.5





Sta	Sta	Slope	Ver ↓	Hor Distance
-----	-----	-------	----------	-----------------

PAGES 8-13  
ARE BLANK



## Main Traverse Loop

Sta	Sta	Slope	Ver Z	Hbr Dist
42	Iron F. post	17.5	0-00	<del>17.5</del> 0.00
Iron F. Post	42	9.9	0-00	9.9
		7.6	0-00	<del>7.6</del> 17.5
42	43	3427.14	0-00	3427.14 ✓
43	MC 26/27	74.05	0-00	74.05 ✓
MC 26/27	43	37.15	0-00	37.15
		36.90		<del>36.90</del> 74.05 ✓
43	44	4304.19	0-00'	<del>4284.09</del> 4304.18 ✓ →
44	45	162.0	0-00	161.95 ✓
45	PIPE? 1/16 cr?	68.35	0-00	68.35 ✓
PIPE	45	33.70	0-00	
		34.60		<del>68.30</del> ✓
<del>45</del>	<del>46</del>	<del>162.0</del>	<del>1° 05'</del>	
45	46	223.15	1° 00'	223.1

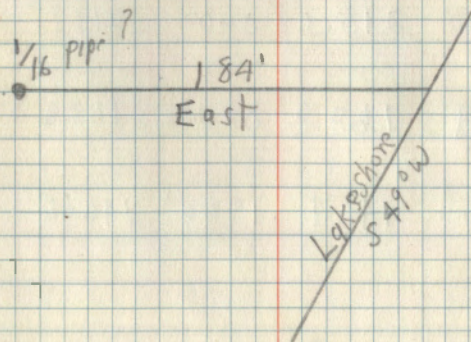
14

June 7, 1975

Curt Krause

Jack Grandy

Vic Hedman

Post 25 feet south  
of lake shoreEDM measurement across lake  
3427.0 on July 3 check measurementEDM measurement across lake  
4284.09 on July 3 check measurement



Main Traverse Loop

Sta	Sta	Slope	Ver L	Hor Distance	
46	47	261.3	1° 00'	261.25	✓
47	48	211.15	0-00	211.15	✓
48	49	139.25	0-00	139.25	✓
49	50	209.40	0-00	209.40	✓
50	51	292.0	1-00	291.95	✓
51	1	161.50	0-00	161.50	Rough change 161.5
51	52	279.85	0-50	279.80	✓
52	53	213.3	0-00	213.3	✓
53	54	168.8	0-00	168.8	✓
54	55	146.1	1° 20'	146.05	✓

Station 50 is 15 to 20 feet west of west edge of swamp

Start of Loop to north

Station 52 is 25 feet north of north edge of swamp



Main Traverse Loop

Sta	Sta	Slope	Ver /	H Distance	
55	56	287.0	0-00	287.0	
		125.25	0-00	<u>125.25</u>	
				412.25	✓
56	57	208.65	<del>1-15</del> <sup>20 00'</sup>	208.50	✓
57	58	222.85	1°30'	222.75	✓
58	59	189.15	0°45'	189.15	✓
59	60	129.85	0°35'	129.85	✓
60	61	70.5	0-00	70.5	
		300.0	0-00	300.0	
		134.55	0-00	134.55	
				540.505	✓
61	62	178.0	4°45'	177.4	✓
62	63	203.15	0°30'	203.15	✓
63	64	220.85	0°00'	220.85	✓

60 N. side River

61 S. side River

From station 61 it is 20' North to base of hill and 50 feet north to possible old river edge



## Main Traverse Loop

Sta.	Sta.	Slope	Ver. $\angle$	H Distance
64	65	242.05	2°00'	241.90 ✓
65	66	127.5	3°00'	127.30 ✓
66	67	164.15	0°30'	164.15 ✓
67	21	93.6	0°00'	93.6 ✓



Rough Chainage  
From JC 32/33

1	2	504
2	3	231
3	4	593
4	5	261
5	6	363
6	7	387
7	8	208
8	9	222
9	10	513
10	11	254
11	12	485
12	13	355
13	14	238
14	15	190
15	16	353
16	17	336
17	18	232
18	19	136
19	20	345
20	21	177



# South-Loop

SC 34-35	CB. 2-3	61.5'	6°05'		
SC-34-35	11	200.0	1°15'	199.95	
		200.0	3°00'	199.73	
		24.74	0°	24.74	
				424.4	✓
11	12	200.0	0°30'	200.0	✓
		155.23	1°30'	155.2	✓
				355.2	
12	13	182.43	2°30'	182.3	✓
13	14	200.0	3°20'	199.7	
		131.45	6°30'	130.6	
				330.3	✓
14	15	200.0	3°00'	199.7	
		100.0	0°	100.0	
		190.35	1°10'	190.3	
				490.0	✓
15	16	199.20	1°10'	199.2	✓
16	17	200.0	4°30'	199.4	
		200.0	0°	200.0	
		85.0	7°30'	84.3	
		33.2	3°0'	33.2	
				516.9	✓

line on South Boundary of forest 10<sup>th</sup> Std. Parallel  
and West to Sec. Cor. to Sec's. 33 & 34  
then north to Access road east to trehipe lake  
Summer Homes

122<sup>ft</sup> to S. of wood road nearly const.



# South Loop

17	Pot	142.10	2°45'	141.9	
	18	191.20	5°0'	190.5	✓
				<u>332.4</u>	27.3'
18	19	65.0	2°0'	65.0	
		200.0	1°0'	200.0	
		200.0	2°30'	199.8	
		2.90	0°	2.9	
				<u>467.7</u>	✓
19	20	200.0	4°50'	199.3	✓
		96.10	6°0'	95.6	✓
				<u>294.9</u>	✓
20	21	200.0	1°0'	200.0	
		51.20	0°	51.2	
				<u>251.2</u>	✓
21	22	200.0	3°15'	199.7	✓
		159.80	4°15'	159.4	✓
				<u>359.1</u>	✓
22	23	183.40	2°30'	183.2	✓
23	24	200.0	1°30'	199.9	✓
		56.90	0°	56.9	✓
				<u>256.8</u>	✓
24	25	200.0	3°40'	199.6	
		116.80	0°	116.8	
				<u>316.4</u>	✓

Point on tangent north of Approx. 1/4 Cor. Sec. 34  
 27.3' from spike (Pot) to post for Approx. 1/4 Sec. 34



# South Loop

25	26	200.0	1°0'	200
		99.25	0°	99.25
				<u>299.3</u> ✓
26	27	200.0	0°	
		105.70	0°	
				<u>305.7</u> ✓ 34.10
27	28	139.05	5°0'	138.5 ✓
28	29	200.0	2°0'	199.9 ✓
		113.20	2°0'	113.1 ✓
				<u>313.0</u> ✓
29	30	200.0	0°	200 ✓
		101.3	3°0'	101.1 ✓
				<u>301.1</u> ✓
30	15	200.0	2°30'	199.8
		200.25	2°30'	200.0
				<u>399.8</u> ✓

across small wet slough to north

Use tie to approx. Sec. Cor. to Sec.'s 33 & 34  
34.10' from #26 to approx. Sec. Cor. used post

#15 on road traverse



## North Loop

Sta.	Sta.				Rough chainage
1	2	200.0	0°	200	
		47.60	0°	47.6	
				<u>247.6</u> ✓	247
2	3	200.0	0°		
		89.10	0°		
				<u>289.10</u> ✓	289
3	4	200.0	0°20'	-	
		144.00	0°		
				<u>344.0</u> ✓	344
4	5	200.0	0°		
		105.20	0°	30	
				<u>305.20</u> ✓	305
5	6	125.70	0°	125.7	✓ 126
6	7	200.0	1°45'	199.91	
		112.80	0°	112.80	
				<u>312.71</u> ✓	313
7	8	200.0	0°		
		200.0	0°		
		69.60	0°		
				<u>469.6</u> ✓	470
8	9	200.0	0°		
		73.60	0°		
				<u>273.6</u> ✓	274

this line is from Approx. Sec Cor. to Sec's. 27-28-33-34  
North westerly to top road for tie to 1/4 Bot Sec. 27-28

185' North of Pt 3 and 50' East Deer stand (looks good)

200' ± from Pt #6 westerly cable across road approx. 50' ± south  
of this measurement



## North Loop

9	10	200.0	0°		
		29.80	0°		
				227.8	✓ 228
10	11	200.0	100°	199.97	
		73.40	0°	• 73.40	
				273.37	✓ 273.5
11	12	200.0	100°	199.97	
		5.20	0°	<del>205.17</del> 5.2	✓ 205
EDM shots 7-8-75 PM					
12	1/4 Bet 27-28	772.70	0°	772.65 <sup>2nd</sup>	772.69 <sup>3rd</sup>
12	13	3567.20	0°	3567.2	3567.28 <sup>2nd</sup> 3567.20 <sup>3rd</sup>
EDM Distance 7-7-75					
13	14	260.80	0°	260.8	
14	15	1002.0	0°	1002.0	
15	1/4 28-29	449.20	100°	449.13	
15	SC <sup>29-28</sup> <sub>32-33</sub>	<del>2273.9</del> 2273.9	<sup>3 Times</sup> 0° 22'	2273.85	
SC <sup>29-28</sup> <sub>32-33</sub>	16	1413.40	0° 15'	1413.39	

23

Pt #12 spike w/ ribbon in center of tsp. road E-W and woods  
trail running SE to Sec. Cor. to Sec's. 27-28-33-34

Point #13 is 12.4' OFF POWER POLE

Pt #15 east 16.3' of 5" X 5" X 8' Cedar post Fire Warden sign  
west shoulder of Co. road #129

3" Aspen w/ rail east side of Co road 25.6 to spike - west side of  
road and driveway to west



North Loop

EDM 7-7-75 85° temp PM.

16 1/4 32-33 1378.80 0° 20' 1378.78

EDM 7-8-75 75° temp AM

1/4 32-33 #1 2672.40 0° 2672.40 2672.50<sup>2nd</sup>  
2672.35<sup>3rd</sup> PM

#1 #2 504.06<sup>PM</sup> 3° 45'

Line to S/4 Sec. 33

EDM 7-9-75 70° Temp PM

4 1 781.40 2° 15'

1 2 286.70 1° 0'

1378.80. Recorded 7-8-75 AM checked

504.05<sup>EDM</sup> 6-4-75 PM checked

Tie to S/4 of Sec 33 from main road traverse



line around County 40 in Sec. 33

Sta.	Sta.	Slope	Vert Dist.	Hor. Dist.
Pt#13	Pt#15	300.00	2°18'	299.76
		120.57	2°18'	120.47
				<u>420.23</u>
Pt#13	Pt#1	300.00	2°23'	299.74
		96.97	2°23'	96.39
				<u>396.13</u>
#1	#2	139.62	11°05'	<u>137.0</u>
2	3	193.95	4°00'	<u>193.48</u>
3	4	300.00	8°00'	297.08
		100.00	0°	100.00
		300.00	2°50'	299.63
		3.05	0°	3.05
				<u>699.76</u>
4	5	300.00	0°	300
		152.50	0°	152.5
				<u>452.5</u>

#2 Approx. SE 1/16 Sec. 33

Pt#5 Approx. CE 1/16 Sec. 33



line	around	County	40		
Sta.	Sta.	Slope	Vert %	Horiz Dist.	
5	6	300.00	0°	300	
		8.95	0°	8.95	
				<u>308.95</u>	
6	7	300.00	0°	300	
		300.00	0°	300	
		300.00	0°	300	
		233.20	0°	233.2	
				<u>1133.2</u>	
7	8	300.00	0°	300	
		300.00	0°	300	
		284.50	7°00'	282.38	
				<u>882.38</u>	
8	9	300.00	0°	300.00	
		290.15	4°00'	289.44	
				<u>589.44</u>	
9	9 M.L.	300.00	2°00'	299.82	
		273.60	3°40'	273.04	
				<u>572.86</u>	

Pt 7 Approx. C<sup>1</sup>/<sub>4</sub> Sec. 33

swamp

Pt 9 Approx. C<sup>5</sup>/<sub>16</sub>

9 Main Loop



SKIPPED BLANK  
PAGES -

RENUMBERING @  
| LATER IN THIS  
BOOK



E.D.M. across lower Felipe Lake

7-3-75

thur. 1:30 PM

42 43 3427.03

<sup>2nd</sup>  
3427.00 4:15 PM

6-7-75

3427.14

43 44 no reading

6-7-75  
4304.18

7-3-75 3:30 PM

44 43 4284.09



Blaine Paschke

Karey Barrett

Robert Emery

Randy Moxton

Jerry C. Johnson

Ken Lane

Corner Monumentation

Page

Description

1	S <sup>1</sup> / <sub>4</sub> Sec. 33
2	Sec. Cor. 33-34
3	S <sup>1</sup> / <sub>4</sub> Sec. 34
4	S <sup>1</sup> / <sub>16</sub> Bet. Sec's. 34-35
5	<sup>1</sup> / <sub>4</sub> Bet. Sec's. 34-35
6	MC Bet. Sec's. 34-35
7	C <sup>1</sup> / <sub>4</sub> Sec. 34
8	<sup>1</sup> / <sub>4</sub> Bet. Sec's. 33-34
9	CE <sup>1</sup> / <sub>16</sub> Sec. 33
10	SE <sup>1</sup> / <sub>16</sub> Sec. 33
11	CS <sup>1</sup> / <sub>16</sub> Sec. 33
12	C <sup>1</sup> / <sub>4</sub> Sec. 33
13	Sec. Cor. 27-28-33-34
14	W <sup>1</sup> / <sub>16</sub> Bet. Sec's. 27-34
15	MC Bet. Sec's. 27-34
16	<sup>1</sup> / <sub>4</sub> Bet. Sec's. 27-28
17	S <sup>1</sup> / <sub>16</sub> BET. SEC'S 32-33
18	N <sup>1</sup> / <sub>16</sub> BET. SEC'S 32-33
19	NW <sup>1</sup> / <sub>16</sub> Sec 33
20	W <sup>1</sup> / <sub>16</sub> Bet. Sec's. 28-33
21	CW <sup>1</sup> / <sub>16</sub> Sec. 33
22	CW W <sup>1</sup> / <sub>16</sub> Sec. 33
23	CW SW <sup>1</sup> / <sub>16</sub> Sec. 33
24	WITNESS CORNER <sup>1</sup> / <sub>4</sub> WEST SIDE OF POND
25	" " " EAST " " "
26	" " " E <sup>1</sup> / <sub>16</sub> WEST " " "
28	" " " E <sup>1</sup> / <sub>16</sub> EAST " " "



1  
 South Quarter Corner Sec. 33  
 Notes of Orig. Govt. Survey 1874  
 Set wood post

Elm 12 N45W 161ks.

Maple 7 N17E 201ks.

To perpetuate this corner I set a 2" Dia. x 5' long  
 galvanized steel pipe, filled with concrete and  
 capped with a 3" dia. brass tablet marked

T14IN R27W

SC

1/4 S33

1976

R.I.S. NO. 12261

Witnessed by

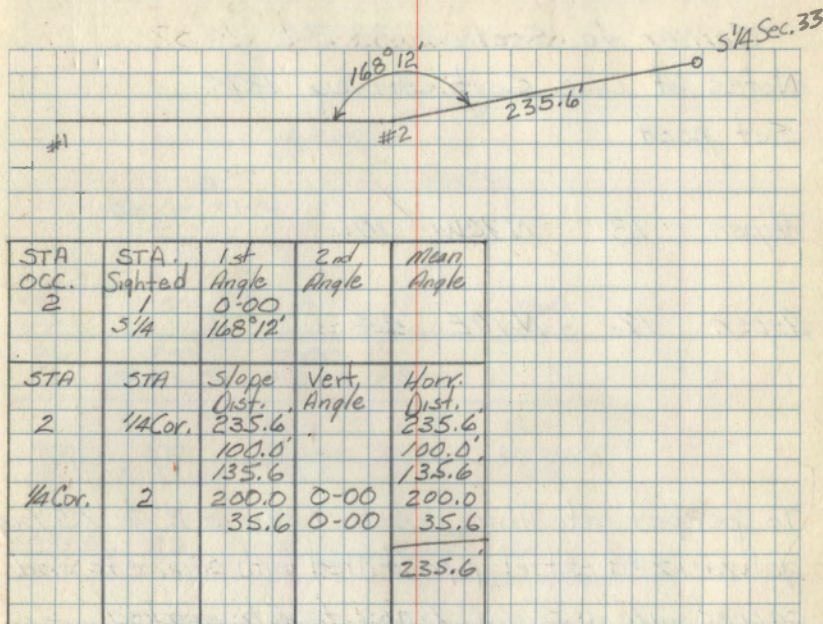
W. Oak 8" N11°E 112.4' SC 1/4 S33 BT

W. Oak 13" N42W 65.0' SC 1/4 S33 BT

N. Pine 20" N30E 101.3' SC 1/4 S33 BT

Set 8' steel post due east 3.6' FS signs 54-2 3/4

Set 8' steel post due west 3.8' FS signs 54-2 3/4





Corner to Section 33-34

Notes of Orig. Govt. survey 1874

Set post

Aspen 13 N70W 17

Aspen 12 N70E 44

To perpetuate this corner I set a 2" dia. x 5' long galvanized steel pipe, filled with concrete and capped with a 3" dia. brass tablet marked

T141NR27W

SC

S33 | S34

Witnessed by

Elm 12" N39E 45.8 mkd T141NR27W S34

R. Oak 13" N76E 36.75 mkd T141NR27W S34

Elm 15" N4W 57.60 mkd T141NR27W S33

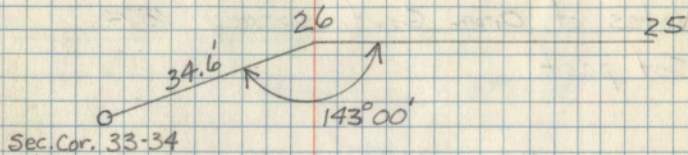
W. Oak 9" N71W 41.25 mkd T141NR27W S33

Set 8' steel post due east 5.4 FS signs 54-2, 54-4

Set 8' steel post due west 3.5 FS signs 54-2, 54-4

7-1-76

Curtis R. Krause



STA OCC	STA Sighted	1st Angle	2nd Angle	Mean Angle
26	25	0-00		
	SC 33-34	143-00	286-00	
STA	STA	Slope Distance	Vert Angle	Horiz. Distance
26	SC 33-34	34.6	0-00	34.6
SC 33-34	26	18.1	0-00	18.1
		16.5	0-00	16.5
				34.6

AUGUST 23, 1977

STEFAN, KRAUSE

UPON MEASUREMENT OF TAPE LINE, MOVED

SC BT THIS MONUMENT EAST 1.11' TO PROPORTIONAL

SC BT POSITION 2619.6' WEST & 2619.6' EAST.

SC BT

SC BT



3

South Quarter Corner Sec. 34  
Notes of Orig. Govt. survey 1874  
Set post

W. Pine 20 N39W 77

B. Oak 6 N52E 25

To perpetuate this corner I set a 2" dia. x 5' long  
galvanized steel pipe, filled with concrete and  
capped with 3" dia brass tablet marked

T14IN R27W  
SC

1/4 S34

1976

R.S. NO. 12261

N. Pine 19" N13E 188.4' mkd. SC 1/4 S34 BT

N. Pine 24" N48E 131.38' mkd. SC 1/4 S34 BT

R. Oak 12" N52W 96.3' mkd. SC 1/4 S34 BT

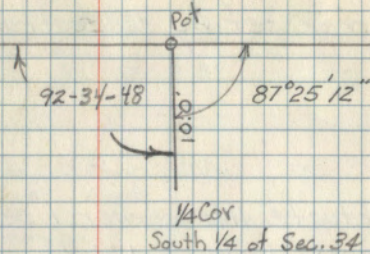
Set 8' steel post due east 3.7' FS signs 54-2 1/2 54-4

Set 8' steel post due west 5.8' FS signs 54-2 1/2 54-4

6-29-76

Ant Kramm

#18



#17

STA OCC.	STA SIGHTED.	1st Angle	2nd Angle	MEAN Angle
P.O.T.	18 1/4 Cor	92-34-48	185-09-36	
STA	STA	Slope Dist	Vert Angle	Horz Dist
P.O.T.	1/4 Cor	10.0	0°0	10.0
1/4 Cor	P.O.T.	9.0 1.0	0-0 0-0	9.0 1.0 10.0

AUGUST 23, 1977

STEFAN, KRAMSE

UPON MEASUREMENT OF TRUE LINE, MOVED THIS  
MONUMENT EAST 1.38' TO PROPORTIONAL  
POSITION 2617.6' WEST + 2617.6' EAST.



4

South 1/16 Corner Bet. Sec's. 34, 35  
this corner set by Cadastral survey

To perpetuate this corner I set a 2" dia. x 5' long  
galvanized steel pipe, tilled with concrete and  
capped with a 3" dia. brass tablet marked

T14IN R27W  
S1/16

S34 S35

Witnessed by

1976

R.L.S. NO. 12261

R. Oak 9" N4W 21.85' mtd S1/16 S34 BT

W. Oak 10" N54W 93.63' mtd S1/16 S34 BT

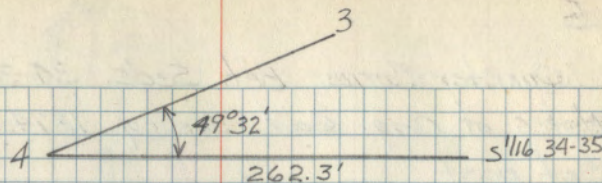
R. Oak 11" S33E 60.30' mtd S1/16 S35 BT

Set 8" steel post due north 3.0' FS signs 54-27-54-4

Set 8" steel post due east 4.3' FS signs 54-27-54-4

6-21-76

Charles R. Klauer



STA OCC	STA Sighted	1st Angle	2nd Angle	Mean Angle
4	3	<del>49°32'42"</del>		
	S1/16 34-35	49°32'12"	99.04-0	

STA	STA	Slope Dist.	Vert Angle	Horiz. Dist.
4	S1/16	262.3'	0-00	262.3

S1/16	4	110.00	0-00	110.00
		152.30	0-00	152.30
				262.30
		99.00		
		100.00		
		103.10		
				262.4

Rough chain



5

Quarter Corner Bet. Sec's. 34-35  
Notes of Orig. Govt. survey 1874  
Set past

N. Pine 18 N67W 38

N. Pine 14 S25W 37

To perpetuate this corner I set a 2" dia. x 5' long  
galvanized steel pipe, filled with concrete and  
capped with a 3" dia. brass tablet marked

T141N R27W  
¼

534 | 535

Witnessed by

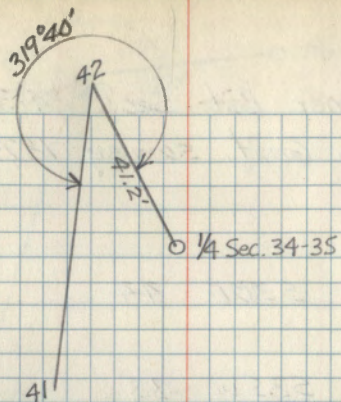
1976

RLS NO 12261

W. Oak 16" S15°W 46.37' mkd. BT  
W. Oak 8" S39°W 99.78' mkd. ¼ S34 BT  
W. Oak 7" S65°E 24.0' Private Property  
rail on North side  
Twist Elm 19" 57" S65°E 1.3' To face.

6-18-76

Curtis R. Krause



STA OCC	STA Sighted	1st Angle	2nd Angle	Mean Angle
42	41	0-00		
	¼ Cor.	319°40'		
STA	STA	Slope Dist.	Vert Angle	Horz Dist.
42	¼ Cor.	41.2	0-00	41.2
¼ Cor.	92		0-00	
			0-00	



6

Meander Corner Bet. Sec's. 34-35  
 Notes of orig. Govt. survey 1874  
 Set post

N. Pine 14 S30E 44

Poplar 5 S35W 45

To perpetuate this corner I set a 2" dia. x 5' long  
 galvanized steel pipe, filled with concrete and  
 capped with a 3" dia. brass tablet marked

T14IN R27W  
 MC

S34 S35

Witnessed by

1976

Ash 9"  
 NW COR  
 SUMMER Home

S5°W 32.51'

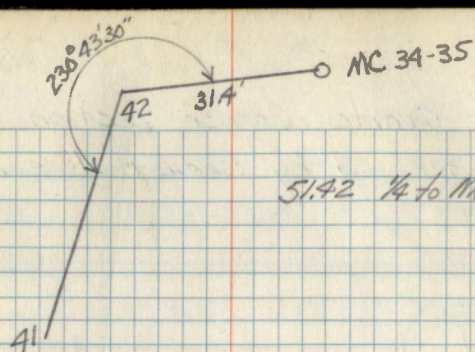
S33°E 87.60'

RLS NO 12261  
 Private Property  
 nail on East side

concrete corner 6" high

6-18-76

Arthur R. Krause



51.42 1/4 to MC

STA OCC	STA Sighted	1st Angle	2nd Angle	Mean Angle
42	41	0-00		
		230°43'30"		
STA	STA	Slope Dist.	Vert Angle	Horiz. Dist.
42	MC	31.4	0-00	31.4
MC	42		0-00	
			0-00	

17'± to Lake shore



7

Center Quarter Corner Section 34  
This corner set by Cadastral survey

To perpetuate this corner I set a 2" dia. x 5' long  
galvanized steel pipe, filled with concrete and  
capped with a 3" dia. brass tablet marked

T14N R27W

C/4 S34

Witnessed by:

1976

R.L.S. NO 12261

TAM. 12" N75°E 66.90' mkd C/4 S34 BT

N. Pine 22" S9°W 75.10' mkd C/4 S34 BT

W. Oak 8" S65°W 103.0' mkd C/4 S34 BT

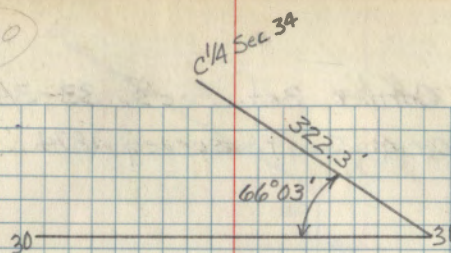
8' steel post set due East 3.6' FS signs 54-274

8' steel post set due West 4.2' FS signs 54-274

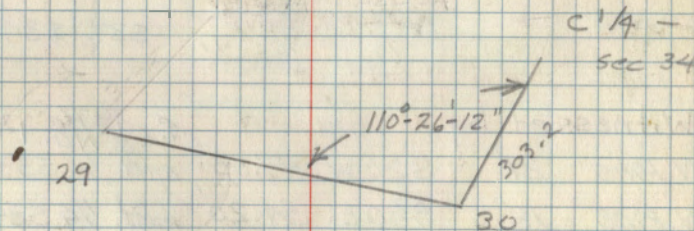
6-28-76

Curtis R. Kasper

29 &amp; 30

(Pt 31)  
Missing  
NWRRe Computed  
TIC

STA	STA	1st	2nd	Mean
CCC	Sighted	Angle	Angle	Angle
30	29	0-00		
	C/4	110-26-12	220-52-24	
STA	STA	Slope	Vert	Horiz
		Dist.	Angle	Dist.
31	C/4	322.3	0-00	322.3
30	C/4	300.0	5-30	298.6
		4.6	0-00	4.6
				303.2
C/4	31		0-00	
			0-00	
C/4	30	164.24	0-00	164.24
		140.9	6-30	139.1
				303.34





8

X-17

Quarter Corner Bet. Sec's. 33-34  
 Notes of Orig. Gov't. survey 1874  
 Set post

Dead Cedar 8 N<sup>30</sup>W 23

To perpetuate this corner I set a 2" dia. x 5' long  
 galvanized steel pipe, filled with concrete and  
 capped with a 3" dia. brass tablet marked

T141N R27W  
 1/4

S33 | S34

Witnessed by

N. Pine 21" S26W 47.05' mkd. 1/4 S33 BT

N. Pine 18" S80E 54.20' mkd. 1/4 S34 BT

N. Pine 19" N66E 82.0' mkd. 1/4 S34 BT

Set 8' steel post due east 4.3' FS signs 54-2 & 4

Set 8' steel post due west 2.85' FS signs 54-2 & 4

7-2-76

Arthur R. Krause

62

63

237°21'

44.2'

1/4 Sec. 33-34

STA OCC.	STA Sighted	1st Angle	2nd Angle	Mean Angle
63	62	0-00		
	1/4 Cor.	237°21'		
STA	STA	Slope Dist.	Vert. Angle	Horr. Dist.
63	1/4	44.2'	0-00	44.2
1/4	63		0-00	
			0-00	



9

Center East 1/16 in Section 33

This corner set by Cadastral survey

To perpetuate this corner I set a 2" dia. x 5' long  
galvanized steel pipe, filled with concrete and  
capped with a 3" dia. brass tablet marked

T14IN R27W

C — E'1/16 — C  
S33

Witnessed by  
N. Pine 20" <sup>78</sup> NZSE <sup>62.03'</sup> 21.2' mkd. CE'1/16 S33 BT  
N. Pine 16" <sup>80</sup> N67E <sup>109.05'</sup> 67.70' mkd. CE'1/16 S33 BT  
N. Pine 18" <sup>79</sup> S67E <sup>116.41'</sup> 67.95' mkd. CE'1/16 S33 BT  
set 8' steel post due east 3.4' FS signs 54-2:4  
set 8' steel post due S22°W 3.5' FS signs 54-2:4

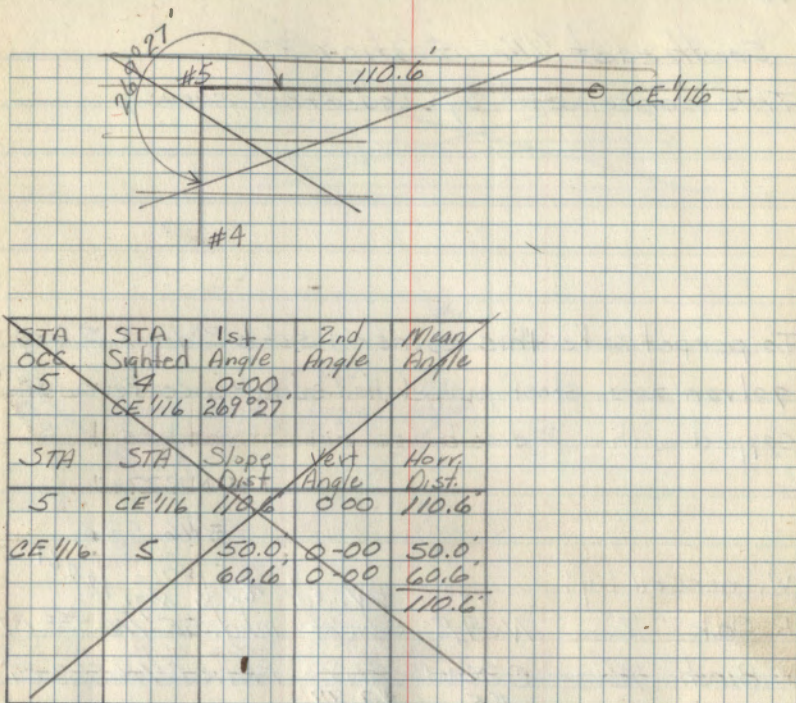
7-12-76

9/27/77

STEFAN KRAUSE

DUE TO A COMPUTATION ERROR MONUMENT  
WAS MOVED TO LINE BETWEEN C'1/4 & E'1/4  
& MIDPOINT BETWEEN — SEE BOOK #9  
PAGES 69 & FOR FIELD WORK.  
NEW B.T.

B. ASH 8" S22°W 33.63' MKD CE'1/16 S33BT





## Southeast 1/16 Section 33

This corner set by Cadastral survey

To perpetuate this corner I set a 2" dia. x 5' long  
galvanized steel pipe, filled with concrete and  
capped with a 3" dia. brass tablet marked

T141N R27W

SE 1/16 S33

Witnessed by:

R. Oak 9"  $53^\circ$  74.30' R.L.S. NO. 12261  
N39E 56.15' mkd. SE 1/16 S33 BT

~~Y. Birch 7" S20W 34.0' mkd. SE 1/16 S33 BT~~

~~W. Pine 11"  $55^\circ$  43.89'  
S68W 65.65' mkd. SE 1/16 S33 BT~~

set 8' steel post due west 3.0' FS signs 54-294  
set 8' steel post N2°E 6.2' FS signs 54-294

7-12-76

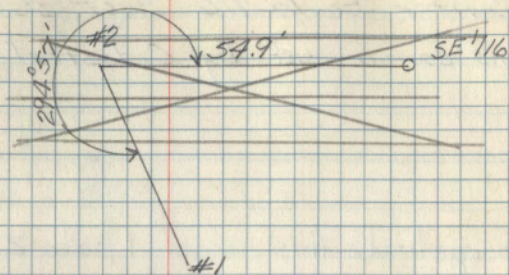
9/27/77

STEFAN, KRAUSE

DUE TO A COMPUTATION ERROR, MONUMENT WAS

MOVED; SEE BOOK 9, PAGES FOR FIELD NOTES.

W. OAK 6" N31°W 22.81' MKD SE 1/16 S33 BT



STA	STA	1st	2nd	Mean
Obs.	Sighted	Angle	Angle	Angle
2	1	0-00		
	SE 1/16	294.57'		
STA	STA	slope	Vert.	Horiz.
		Dist.	Angle	Dist.
2	SE 1/16	54.9		54.9
SE 1/16	2	28.0	0-00	28.0
		26.9	0-00	26.9



11.

Center South 1/16 Section 33

This corner set by Cadastral survey

To perpetuate this corner I set a 2" dia. X 5' long  
galvanized steel pipe, filled with concrete and  
capped with a 3" dia. brass tablet marked

T141NR27W

C

S 1/16 S33

C

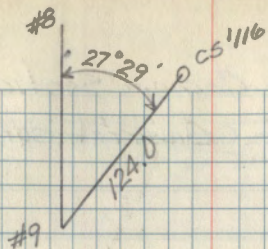
Witnessed by	27°	80.18'	1976, 1976
W. Oak 7"	N31°E	<del>31.0</del>	mkd. CS 1/16 S33 BT
R. Oak 18"	N68°E	<del>32.1</del>	mkd. CS 1/16 S33 BT
R. Oak 10"	S45°E	37.55'	mkd. CS 1/16 S33 BT

set 8' steel post due east 5.3' FS signs 54-214  
set 8' steel post N4W 5.7' FS signs 54-214  
7-13-76

9/27/77

STEFAN, KRAUSE

DUE TO ADJUSTMENT OF TOWN LINES AROUND  
THE NW 1/4 SE 1/4 THIS MONUMENTS POSITION  
WAS MOVED NORTH 1.50' & EAST





12

Center Quarter Corner Section 33  
This corner set by cadastral survey

To perpetuate this corner I set a 2" dia. x 5' long  
galvanized steel pipe, filled with concrete and  
capped with a 3" dia. brass tablet marked

T141N R27W

C/4 S33

Witnessed by

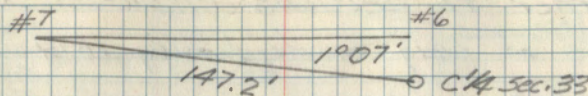
1976 R.L.S. No.  
12261

R. Maple 8" N61°W 58.2' mkd. C/4 S33 BT  
P. Birch 7" S62°W 38.65' mkd. C/4 S33 BT  
P. Birch 7" S46°E 61.70' mkd. C/4 S33 BT  
P. Birch 6" N88°E 47.10' mkd. C/4 S33 BT

Set 8' steel post S4°E 50' FS signs 54-2#4

Set 8' steel post due West 3.6' FS signs 54-2#4

7-14-76





13

Corner to Sections 27-28-33-34  
Notes of Orig. Gov't. survey 1874  
Set post

Ironwood 5 S31E 21

Maple 5 N38E 57

Elm 7 N17W 10

Elm 16 S59W 32

To perpetuate this corner I set a 2" dia. x 5' long  
galvanized steel pipe, filled concrete and  
capped with a 3" dia. brass tablet marked

T141N R27W

528 | 527

533 | 534

Witnessed by .

1976

RLS NO 12261

Ash 6" N8°E 35.25' T141N R27W S27 BT

Maple 15" S56°E 10.45' T141N R27W S34 BT

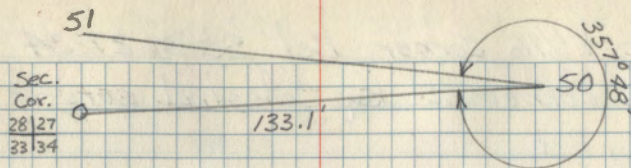
W. Oak 17" S75W 80.50' T141N R27W S33 BT

B. Wood 10" N40°W 31.55' T141N R27W S28 BT

8' steel post due North 3.15' FS signs 54-2-54-4

8' steel post due east 3.55' FS signs 54-2-54-4

6-24-76 Curtis R. Kucanas



STA OCC	STA Sighted	1st Angle	2nd Angle	Mean Angle
50	51	0-00		
	SC	357.48'	359-36	
STA	STA	Slope Dist.	Vert. Angle	Horiz. Dist.
50	SC	133.1	0-00	133.1
SC	50	130.0 3.1	0-00 0-00	130.0 3.1
				133.1



14

West 1/16 Corner Bet. Sec's. 27-34  
 this corner set by Cadastral survey

To perpetuate this corner I set a 2" dia. x 5' long  
 galvanized steel pipe, filled with concrete and  
 capped with a 3" dia. brass tablet marked

T141NR27W

w/116 S27

S34

Witnessed by

1976

RLS NO. 12261

W. Oak 15" South 62.85' mkd w/116 S34 BT

R. Oak 17" S82°W 59.05' mkd w/116 S34 BT

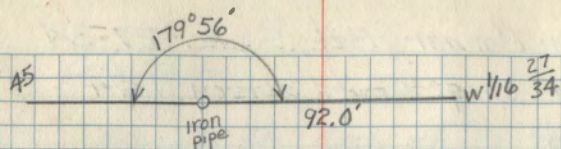
Rock  
 3 1/2 x 5 x 18" N34°W 89.2' mkd X

8' steel post due north 3.4' FS signs 54-2-54-4

8' steel post due west 3.4' FS signs 54-2-54-4

6-23-76

Curtis R. Shaw



STA OCG Iron	STA Sighted 45 w/116	1st Angle 0-00 179°56'	2nd Angle 359-52	Mean Angle 179-56
STA Iron	STA w/116	Slope Dist. 92.0' 42.0 50.0	Vert Angle 0-00 0-00	Horiz. Dist 92.0'
w/116	Iron		0-00 0-00	92.05 Rough Chain



15

Meander Corner Bet. Sec's. 27-34  
 Notes of Orig. Govt. survey 1874  
 Set post

Oak 14 N7W 21

Oak 8 S58W 43

To perpetuate this corner I set a 2" dia. x 5' long  
 galvanized steel pipe, filled with concrete and  
 capped with a 3" dia brass tablet marked

T141N R27W

S27 / MC  
 S34 /

Witnessed by

1976

RLS NO 12261.

W. Oak 24" N18E 22.45' mkd. MC S27 BT

W. Pine 15" N82W 20.75' mkd MC S27 BT

W. Pine 19" S71W 17.10' mkd MC S34 BT

8' steel post due east 1.2' FS sign 54-4

6-24-76

Curtis R. Koerner

12' to Lake shore

SET MC 76 ft East of W 1/16



16 T-13

Quarter Corner Bet. Sec's. 27-28  
Notes of Orig. Govt. survey 1874  
Set post

Maple 5 N48E 14

W. Pine 5 N20W 21

To perpetuate this corner I set a  $5\frac{1}{2} \times 5\frac{1}{2} \times 24$ "  
concrete monument - 10" below surface of road  
with 3" dia. brass cap marked

T14IN R27W

$\frac{1}{4}$

S28 | S27

Witnessed by

				R.L.S. No.
W. Pine	25"	N2E	83.05	1977 12261
W. Oak	13	N27E	122.72	$\frac{1}{4}$ S27 BT
Elm	15	S35W	79.78	$\frac{1}{4}$ S28 BT
W. Spruce	10	S50E	66.15	$\frac{1}{4}$ S27 BT

Set 4"x4"x8' Cedar post due north 42.5  $\frac{1}{4}$  S signs SA-214

Set 8' steel post due south 18.8'  $\frac{1}{4}$  SA-214

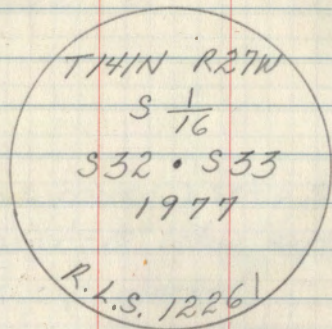
9/28/77

OIESEN  
KRAUSE



SOUTH  $\frac{1}{16}$  BETWEEN SECTIONS 32-33

PLACED 6" X 6" X 24" CONCRETE POST  
AT MIDPOINT BETWEEN SECTION CORNER  
32 & 33 SOUTH -  $\frac{1}{4}$  SECTION CORNER NORTH  
WITH BRASS CAP STAMPED AS FOLLOWS:



FROM WHICH THE FOLLOWING BEAR:

CEDAR	TAM.	TAM.	TAM	SIGN POST
8"	8"	8"	7"	*
N 60°E	S 60°E	S 41°W	N 78°W	WEST
48.65'	79.60'	71.60'	59.66'	64.8'

MONUMENT IS 14" BELOW SURFACE  
OF THE ROAD.

\* LINE CUT OUT WEST TO LANE

STEFAN  
OLSEN  
KRAUSE

JUNE 9, 1977

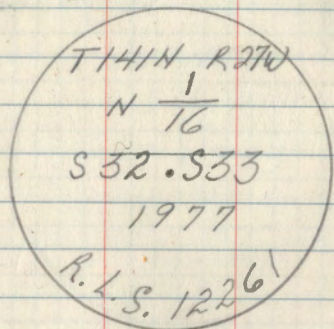
WHEN DIGGING HOLE FOR MONUMENT, HIT  
A  $\frac{3}{4}$ " IRON PIPE 16" LONG, 3" BELOW  
ROAD SURFACE. PLACED THIS PIPE ON  
NORTH EDGE OF THIS CONCRETE POST.

MES



NORTH  $\frac{1}{16}$  BETWEEN SECTIONS 32-33

PLACED 6" X 6" X 24" CONCRETE POST  
AT MID-POINT BETWEEN SECTION  
CORNER-NORTH  $\frac{1}{4}$  CORNER-SOUTH  
WITH BRASS CAP STAMPED:



FROM WHICH THE FOLLOWING BEAR:

			LOCAL B.T.
W. OAK	J. PINE	CEDAR	RED PINE
10"	10"	12"	20" STUMP
S 68°E	S 29°E	N 88°W	N 38°W
65.96	73.64	90.72	56.17

LOCAL BT WITH SCRIBING VISIBLE ON  
BURNT FACE.

JUNE 9, 1977

WHEN DIGGING HOLE FOR OUR MONUMENT  
WE LOCATED A  $\frac{3}{4}$ " IRON PIPE 16"  
LONG 6" BELOW ROAD SURFACE.  
PLACED PIPE ALONG SIDE OUR CONCRETE  
MONUMENT.

MAES



19

Northwest 1/16 Corner Section 33

To perpetuate this corner I set a 2" dia. x 5' long  
galvanized steel pipe, with concrete inside  
and capped with 3" dia. brass tablet marked

T14IN R27W

NW 1/16 S33

1977

RLS NO 12261

Witnessed by:

Cedar 8 S88E 21.30' NW 1/16 S33 BT

Cedar 12 N43E 31.03' NW 1/16 S33 BT

Cedar 7 N15W 8.70' NW 1/16 S33 BT

Set 8' steel post due south 3.8' 54-234

Set 8' steel post due west 5.1' 54-234

9/28/77

KRAUSE &amp; OLESEN

OLESEN  
KRAUSE

9/28/77

SURVEYED POSITION IN BOOK 9, PAGE 67



20

West  $\frac{1}{16}$  Corner Bet. Sec's. 28 & 33

To perpetuate this corner I set a 2" dia. x 5' long  
galvanized steel pipe, with concrete inside  
and capped with 3" dia. brass tablet marked

T141NR27W

$$\frac{W\frac{1}{16}}{S28}$$

$$S33$$

$$\frac{1977}{RLS \text{ NO } 12261}$$

Witnessed by:

WHITE OAK 13", N. 2° E., 81.61'

WHITE OAK 14", S. 89° W., 64.65'

WHITE OAK 8", S. 42° W., 15.33'

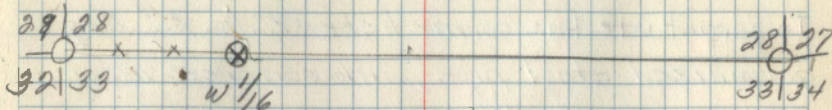
STEEL SIGN POST, WEST, 4.5'

STEEL SIGN POST, NORTH, 9.0'

STEFAN  
KRAUSE

FEB 10, 1975

SURVEYED POSITION BOOK 9, PAGE 68





## Center West 1/16 Section 33

To perpetuate this corner I set a 2" dia. x 5' long  
galvanized steel pipe, with concrete inside,  
and capped with 3" dia. brass tablet marked

T14IN R27W

$$\begin{array}{c} \text{W}^{1/16} \\ \text{C} \\ \text{S33C} \\ 1977 \end{array}$$

RISNO 12261

Witnessed by:

CEDAR	CEDAR	SIGN	SIGN
12"	10"	POST.	POST
S42°E	S63°E	EAST	NORTH
175.09'	180.30'	3.1'	3.1'

9/27/77

Mike Stefan

SURVEYED POSITION IN BOOK #9, PAGE #73



22

## Center West - West 1/64 Section 33

To perpetuate this corner I set a 2" dia. x 5' long  
galvanized steel pipe, with concrete inside  
and capped with 3" dia. brass tablet marked

T141N R27W

S33  
CWW 1/64

1977.

RLS NO 12261

Witnessed by

Cedar 11 N30W 113.60' CWW 1/64 S33 BT

ASH 9 N38E 53.85 CWW 1/64 S33 BT

SET 8' STEEL POST DUE <sup>S10E</sup>~~SOUTH~~ 4.9' 54-2 3/4

SET 8' STEEL POST DUE WEST 3.2' 54-2 3/4

9-29-77

KRAUSE &amp; OLSEN

SURVEYED POSITION IN BOOK #9, PAGE 66



23

Center West - South West 1/64 Sec. 33

To perpetuate this corner I set a 2" dia. x 5' long  
galvanized steel pipe, with concrete inside  
and capped with 3" dia. brass tablet marked

T141NR27W

S33

CW SW 1/64

1977

RLS NO 12261

Witnessed by

~~CEGAR~~~~CEGAR~~~~18"~~~~10"~~~~S42°E~~~~S63°E~~

Cedar	7	S87E	18.60'	CW SW 1/64 S33 BT
Cedar	9	S20E	24.35'	CW SW 1/64 S33 BT
Cedar	10	S48W	24.30'	CW SW 1/64 S33 BT

9-28-77

Set 8' steel post 3.4' N10W 54-2 3/4

Set 8' steel post 5.7' West 54-2 3/4

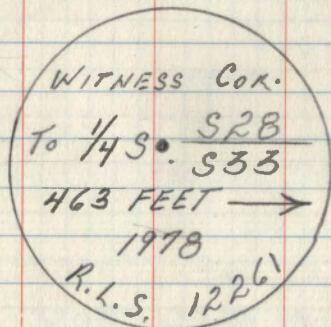
SURVEYED POSITION IN BOOK #9, PAGE #66



24

WITNESS CORNER TO  $\frac{1}{4}$  CORNER  
BETWEEN SECTIONS 28433, WEST SIDE  
OF POND.

PLACED A 2" DIAMETER BY 5' LONG  
GALVANIZED STEEL PIPE, FILLED  
WITH CONCRETE, WIRED TO A 8'  
STEEL FENCE POST AND SET UPON  
& SPIKED TO A 25' X 6" TAMARACK  
POST, AND CAPPED WITH A BRASS  
CAP STAMPED AS FOLLOWS:



FROM WHICH THE FOLLOWING BEAR:

- 1) 7" TAM. STUMP 5' HIGH WITH 8' STEEL  
SIGN POST & B.T. TAG ATTACHED:  
S 38° W, 82.90'
- 2) 7" TAM. STUMP 5' HIGH WITH 8' STEEL  
SIGN POST & B.T. TAG ATTACHED:  
N 78° W, 50.30'
- 3) SIGN POST ON TAM POST 5.0' WEST

STEFAN

Feb. 10, 1978

KRAUSE

MONUMENT VERY NEAR POND EDGE  
WHICH IS A FLOATING BOG MATT.  
SOIL IS VERY DEEP MUD.

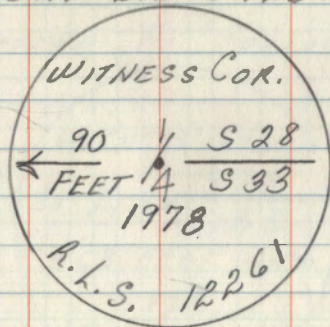
WATER PRESENTLY VERY HIGH &  
TIMBER DEAD FOR SEVERAL HUNDRED  
FEET BACK FROM POND.



25

WITNESS CORNER TO  $\frac{1}{4}$  CORNER  
BETWEEN SECTIONS 28 & 33 ON  
EAST SIDE OF POND.

PLACED A 2" DIAMETER BY 5' LONG  
GALVANIZED STEEL PIPE, FILLED WITH  
CONCRETE, WIRED TO A 8' STEEL  
FENCE POST AND SET UPON AND  
SPIKED TO A 20' CEDAR POST AND  
CAPPED WITH BRASS TABLET AS FOLLOWS:



64.15  
N 23° E

N 64°  
55.17

FROM WHICH THE FOLLOWING BEAR:

- 1) 6" TAM. <sup>STUB</sup> 5' HIGH WITH 8' STEEL FENCE  
POST ATTACHED WITH B.T. 4 54-4 AFIXED.  
N 23° E, 64.15'
- 2) 4" TAM. STUB, 5' HIGH WITH 8' STEEL  
FENCE POST ATTACHED WITH B.T. 4 54-4 AFIXED  
N 64° E, 55.17'
- 3) STEEL FENCE POST SPIKED TO 20' CEDAR  
POST SUNK IN BOG WITH 54-4 + 54-2  
AFIXED DUE EAST, 6.6'

FEB 19, 1978

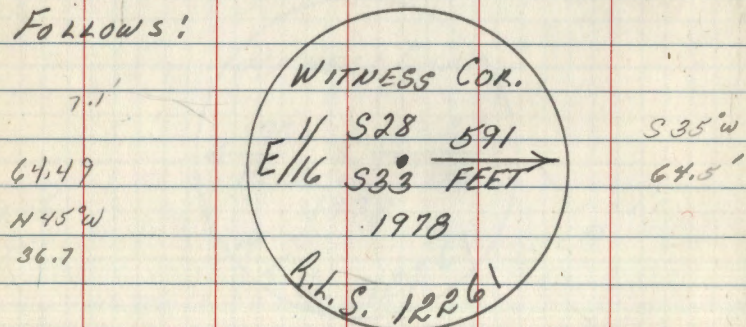
- 4) BOUNDARY POSTER PLACED ON CEDAR  
POST, ON LINE EAST 16.0' FROM W.C.



26

WITNESS CORNER TO E $\frac{1}{16}$  CORNER  
BETWEEN SECTIONS 28 & 33 ON  
WEST SIDE OF POND.

PLACED A 2" DIAMETER BY 5' LONG  
GALVANIZED STEEL PIPE, FILLED WITH  
CONCRETE, WIRED TO AN 8' STEEL  
FENCE POST AND SET UPON AND  
SPINNED TO A 20' CEDAR POST AND  
CAPPED WITH BRASS CAP STAMPED AS  
FOLLOWS:



FROM WHICH THE FOLLOWING BEAR:

- 1) 6" TAM. STUB WITH 8' STEEL FENCE  
POST ATTACHED WITH B.T. & 54-4  
N 45° W, 36.70'
- 2) 6" TAM STUB WITH 8' STEEL FENCE  
POST ATTACHED WITH B.T. & 54-2  
S 35° W, 64.50'
- 3) 5" TAM. POST WITH 54-2 + 54-4  
WEST ON LINE, 7.1'

STEFAN  
KRAUSE

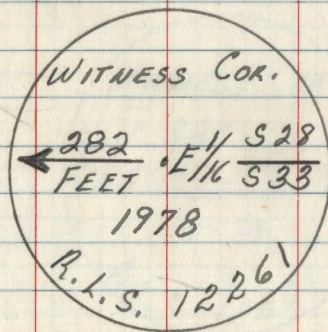
FEB. 13, 1978



27

WITNESS CORNER TO THE E $\frac{1}{16}$   
CORNER BETWEEN SECTIONS 28 & 33  
ON THE EAST SIDE OF POND.

PLACED A 2" DIAMETER BY 5' LONG  
GALVANIZED STEEL PIPE, FILLED WITH  
CONCRETE, WIRED TO AN 8' STEEL FENCE  
POST AND SET UPON AND SPIRED TO  
A 20' TAM. POST AND CAPPED WITH  
A BRASS TABLET STAMPED AS FOLLOWS:



FROM WHICH THE FOLLOWING BEAR:

- 1) 8" TAM. STUB 5' HIGH WITH 8' FENCE  
POST ATTACHED WITH 54-2 + B.T. TAG AFFIXED  
N 62° E, 119.50'
- 2) 10" BASSWOOD, S 39° E, 226.46'
- 3) 5" WHITE OAK, S 55° E, 213.82'
- 4) 4" TAM POST, ON LINE EAST, 5.0'

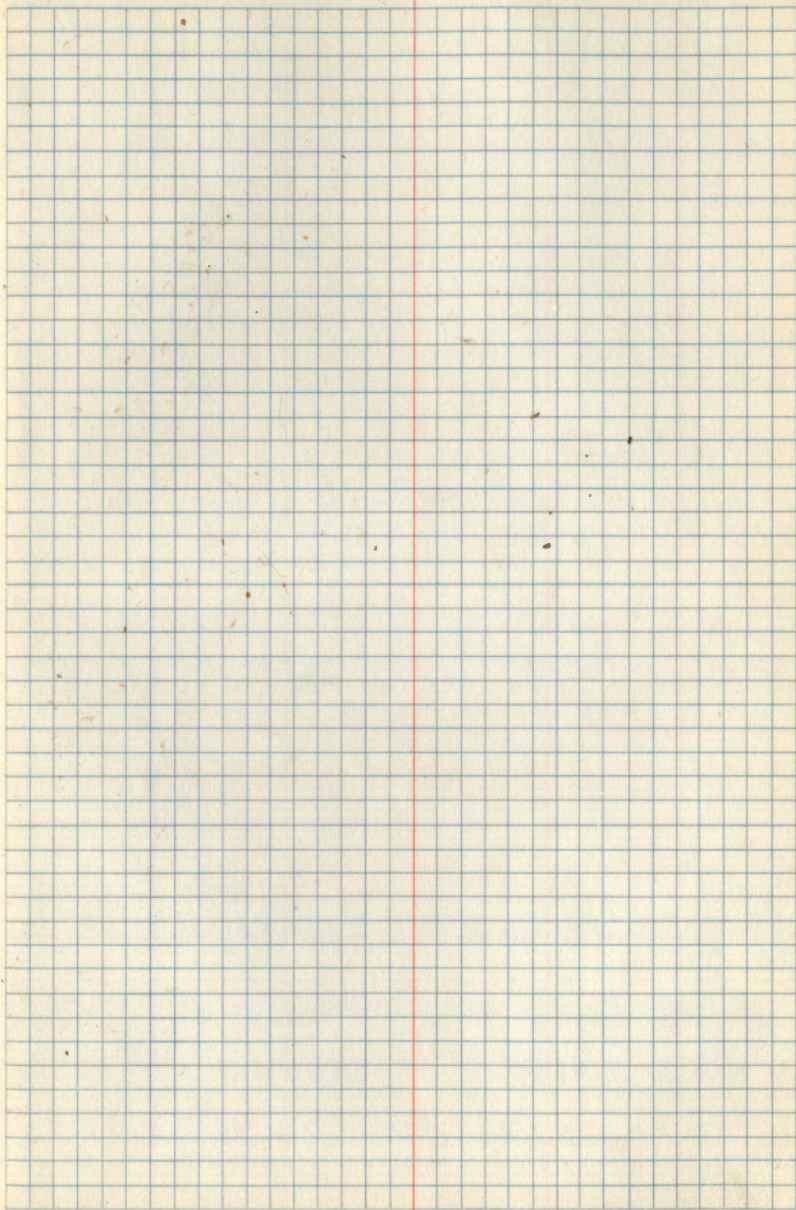
FEB. 13, 1978

KRAUSE  
&  
STEFAN



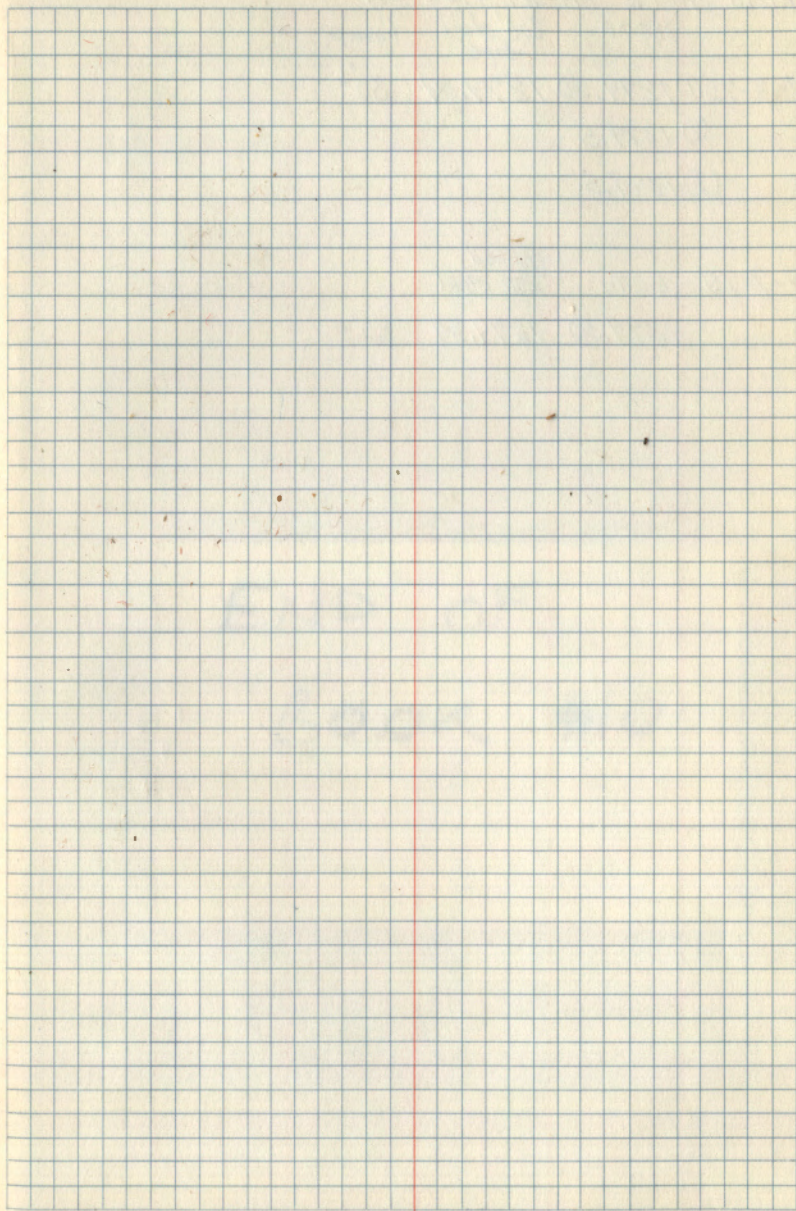
28

29





29





Field check on HP# 3800A  
3800A 200' steel temp  
tape

7-3-75 (1) 1279.50 1279.34 80°+

(2) 1279.5

(3) 1279.5

7-7-75 EDM. Chained  
200' steel

1279.50 1279.34 80°+

END OF  
BOOK #10