

CADASTRAL SURVEYS



"Rite in the Rain"

WEATHERPROOF
FIELD BOOK

82 0004

CADASTRAL SURVEYS

BOOK 6

INDEX

ESTABLISHMENT OF W¹³/₂₄ & TRUE LINE
T147 N R27 W

Page	Description
Page 4	Running notes
5	" "
5	Sketch

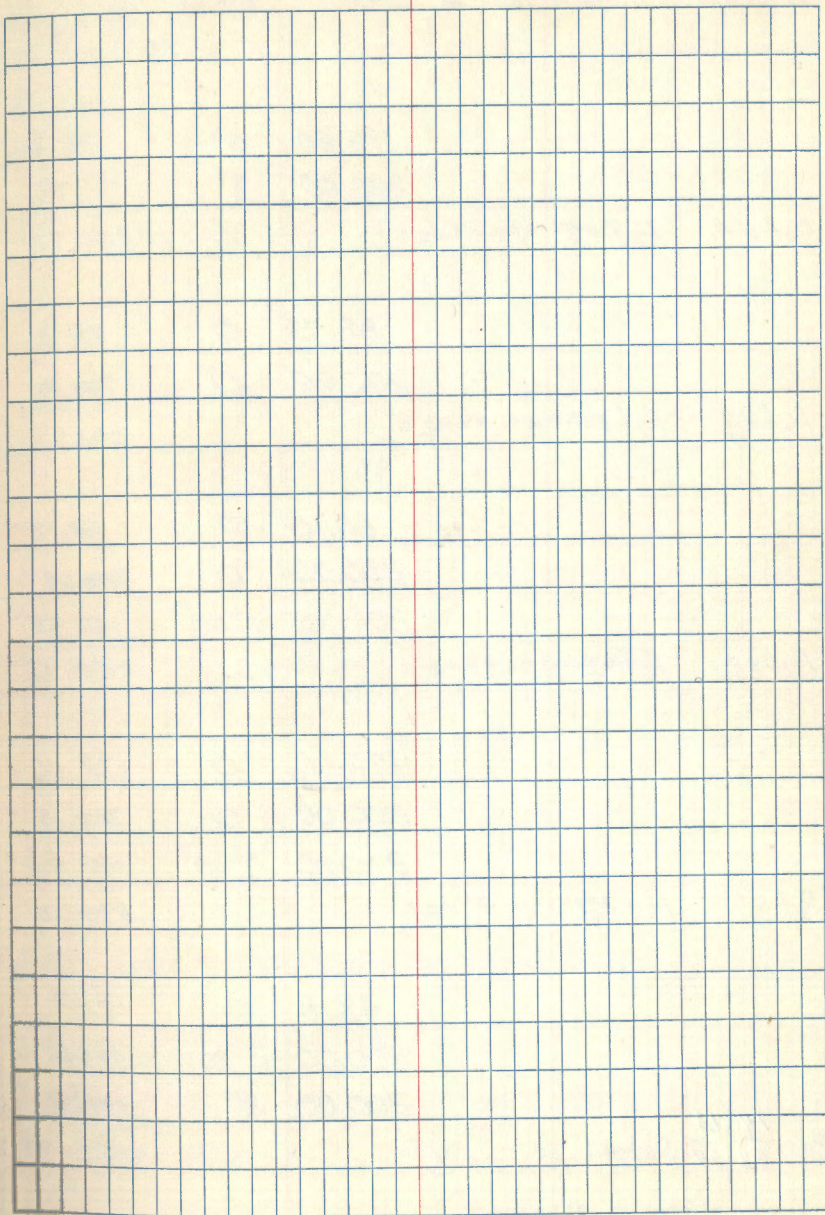
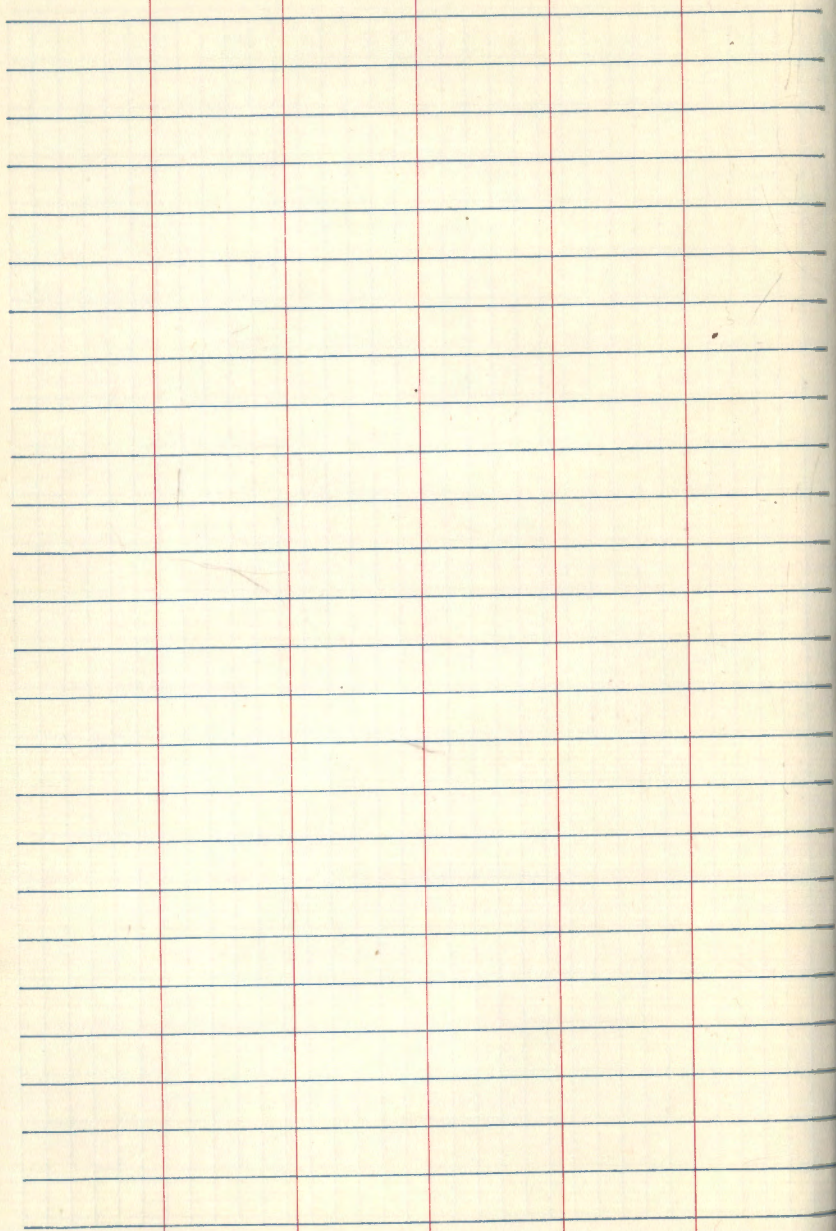
Cut or
fill

0
1
2
3
4
5
6
7
8
9
10
11
12
13
14
15
16
17
18
19
20
21
22
23
24
25
26
27
28
29
30
31
32
33
34
35
36
37
38
39
40

KEL

This page features a standard ruled layout with three vertical red margin lines and horizontal blue lines. The margins are approximately 10% from the left and right edges, and 10% from the top and bottom edges. The page is otherwise blank.

This page is a graph paper layout with a grid of blue lines. A single vertical red margin line is positioned on the right side, approximately 10% from the right edge. The grid covers the majority of the page area.



Pt. occp.	Pt. sighted	Horiz Δ	Dist.	Vert Δ	Corr. Dist.
			196.20	0°	196.20
			200.00	3°	199.72
Pot #4	Pot #5				395.92
			88.73	0	88.73
			200.00	0	200.00
Pot #3	Pot #4				288.73
			60.18	0	60.18
			200.00	0	200.00
			200.00	1°30'	199.94
Pot #2	Pot #3				460.12
			178.06	0	178.06
			200.00	0	200.00
			200.00	1°30'	199.94
Pot #1	Pot #2				578.00
			43.18	0	43.18
			200.00	2°30'	199.81
			200.00	2°	199.88
BC $\frac{14}{23} \frac{13}{24}$	Pot #1				442.87

4-13-70 Temp 30° clear

Krause notes $\frac{1}{2}$ π

Bergeron chain

Shultz P "

Bevins "

Drott's "

o spike in ground

o spike in ground

o spike in ground

o spike in ground

TIATN R 27

1° Brass Cap G.L.O.

6" concrete cylinder

Pt. occp. Pt sighted Horiz Dist. Vert X

G.L.O. Brass cap found in place

line Posted to f.s. standard between
 $\frac{1}{16}$ Cor. & $\frac{1}{4}$ Cor.

$\frac{1}{16}$ Cor 2' x 5' long steel pipe with cap
set by proportional measurement.

G.L.O. Brass cap found in place

Pot #6 $\frac{1}{4}$ Cor. $\begin{matrix} 137^{\circ}56'40'' \\ 137^{\circ}57'40'' \end{matrix}$ 75.91

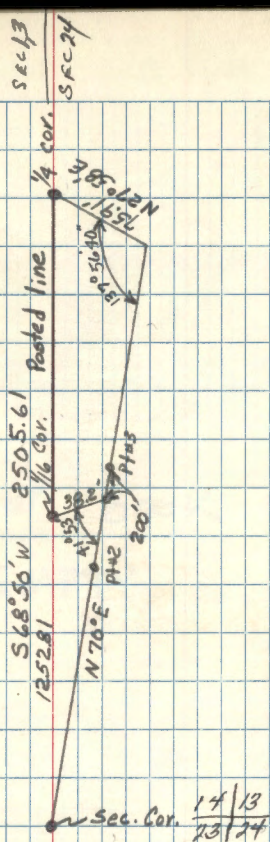
83.00 0 83.00

200.00 0 200.00

Pot #5 Pot #6 283.00

4-14-70

5



58° 50' 40" 3rd Angle

o G.L.O. Brass cap

o spike in ground

REST OF BOOK
IS EMPTY