

LORNER
RESTORATION
T150N R28W

LORNER RESTORATION T150N R28W

MINING TRANSACTIONS
1880-1885

BOOK 1

USFS

BOOK #1 OF 2

T150N

R28W

5TH

P.M.

80	6	5	6	4 ³ 2 ⁵ 1	3	2	12	1
77							13	
76	7	8	9	10	11	12		
75	7A						79	
78	18	73	17	16	45	15	41	14
18	20	72		15	35	36	37	38
17	19	29	20	61 ³⁴	21	49	22	53
16	71	28	22	23	47	48	51	52
62	30	33	29	46	24	28	50	27
63	70	21	29	24	25	31	32	29
64	31		32	30	33		34	8
65	66	67	68	69				

Colored Numbers refer to Page
on which Notes for that
Corner may be found.

Quarter Cor. Sec's. 3-4
Survey of P.C. Warner in 1912.
Plot is recorded in Itasca
Co. Court house.

Iron Monument:

Birch. st. 14" N4°W 15.0'

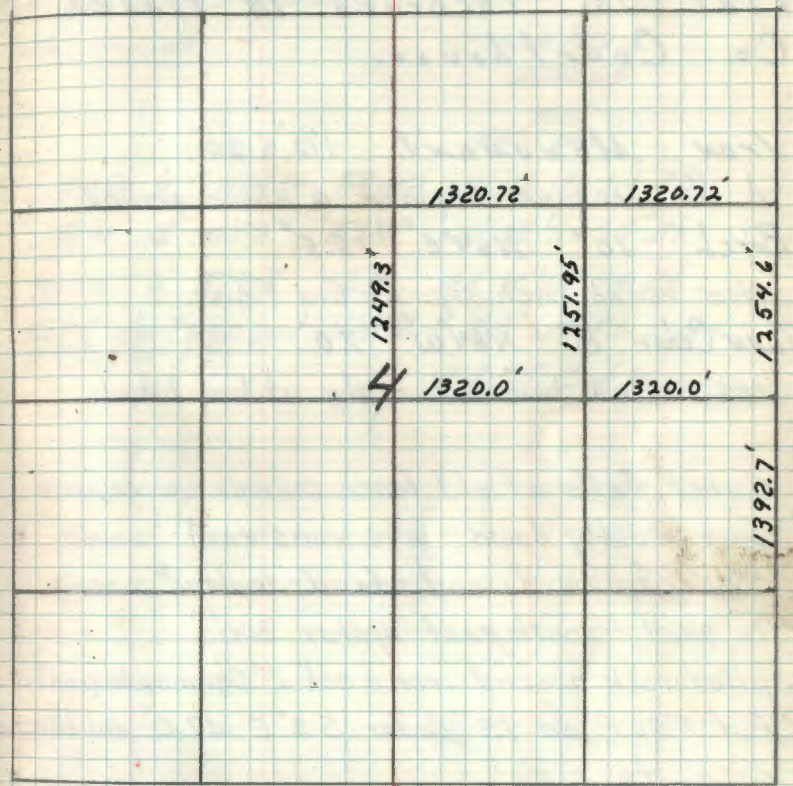
Cedar 9" N82°E 13.5'
NOW A 3 FT TALL STUMP CUT INTO.

P.C. Warner states in his Plat
that the Bearing trees do not
agree with Notes: But the distance
will agree by pointing off one
decimal place.

4-24-2012 R. MAIN

FD IN PLACE AND WITNESS. IRON ± 85 FT
NORTH OF Q CO ROAD # 24.

LINE TO STANDARD NORTH
8' STEEL SIGN POSTS 3.85 NORTH 30°15' WEST
POST TO Q OF POST



2. C-12 C-12 Affidavit 6/27/98
Center East 1/4 Cor. Sec. 4

Survey of P.C. Warner in 1912.
Plat is recorded in Itasca
Co. Courthouse.

Iron Monument. $1\frac{1}{2}'' \times 20''$
fd. $1\frac{1}{2}''$ Iron pipe - in place 6" above ground

Birch 10" $N64^{\circ}E$ ^{Mag.} 15.5'

Now rotted birch stp. at brq. $\frac{1}{2}$ dist.

Twin Cedar 8" $N64^{\circ}W$ ^{Mag.} 7.0'

Now rotted twin cedar stp. at brq. $\frac{1}{2}$ dist.

Corner falls at old fence corner - wire and
post mostly down. wire runs east $\frac{1}{2}$ south
corner in hardwood stand - lowland swamp
to east - south east Approx. 300'
piled rock around iron - set 2" sq. maple post
Put FSLP on 15" Cedar $53^{\circ}E$ 47.0' old blaze
on north side

Put FSLP on 7" Maple on south side of Co. Rd.
#24 corner is 470' south along old blazed line

5-15-74

Curtis R. Krause

To perpetuate this corner I set a 2" dia. x 60" long galvanized
steel pipe, filled with concrete and capped with a 3" dia. brass
tablet stamped

TISON R28W

CE 116 S4

1975

RLS NO.

Maple 9" $N57^{\circ}E$ 58.65 mkd CE 116 S4 BT.

Elm 6" $N18^{\circ}E$ 53.2' mkd CE 116 S4 BT.

Maple 6" $S79^{\circ}W$ 52.0' mkd CE 116 S4 BT.

Set 8" steel sign post due North 3.9' with FS. signs
SA-2 & SA-4

8-8-75 Curt Krause
Reola Reatt

3.

North East $\frac{1}{6}$ Cor. Sec. 4
Survey of P.C. Warner in 1912.
Plat is recorded in Itasca
Co. Courthouse.

Iron Monument:

Cedar 7" N68°E 7.0' CEDAR WIND FELL

Birch 8" South 3.5' GONE

5-7-2012 R. MAIN

Ed IRON IN GRASS SLOUGH. SOME ~~AND~~
AND DOWN CEDAR. IRON WAS LAYING DOWN
I STRAIGHTEN AND RESET, GPS (w/
SURVEY GRADE UNIT. 8' STEEL SIGN POST
ON NORTH EDGE OF IRON. SIGN POST
DRIVEN 7' DEEP AND WIERED TO IRON.
WITNESS WITH 8 FT STEEL SIGN POST
SOUTH 1.18' EAST 1.28' DIST TO
NEAREST EDGE OF POSTS.

4

Center Quarter Cor. Sec. 4
Survey of P.C. Warner in 1912.
Plat is recorded in Itasca
Co. Courthouse.

Iron Monument

Birch 20" N21W 6.0'

Birch 19" N72°E 5.2'

5
North $\frac{1}{6}$ Cor. Sec's 3-4
Survey of P.C. Warner in 1912.
Plat is recorded in Itasca
Co. Courthouse.

Iron Monument:

Poplar 13" S80°E 20.6'

4-24-2012 ROMAIN J. SCHOENOVER

FD IRON IN PLACE AND GPS CORNER
IN MIXED HARDWOOD ON NORTHWEST
CORNER OF GRASS SLOUGH LINE TO STANDARD
SOUTH

ASH 12" N60E 37.95

ASH 13" S86W 15.20

8' STEEL SIGN POSTS 4.05 SOUTH 3.65 WEST
DIST TO C OF POST

6

Quarter Cor. Sec's 4-5.
Survey of P.C. Warner in 1912.
Plat is recorded in Itasca
Co. Courthouse.

Iron Monument:

Birch 12" N82°W 9.8'

Cedar 6" S82°E 4.0'

Cedar 7" S8°W 14.5'

7
Quarter Corner Sections 1-36
T149-150 N R 28 W - Notes of orig.
Govt Survey
Post

- ① Aspen 7" S28°W 9 lks. (5.94')
- ② Tamarack 8" N40°W 24 lks (15.84')

NOTES BY JOHN J ROSE 1927

FOLDER #15 PAGE 80

FROM SECTION CORNER TO SECTION 1-2-35-36 S89°26'E

LINE FELL 2.0' SOUTH OF TOWNSHIP CORNER - TOTAL MILE 5159.3

NO EVIDENCE OF 1/4 CORNER - SET PROPORTIONAL DISTANCE

2579.65' (20' WEST OF OPEN SWALE)

SET ASH POST

ASPEN 10 N40E 10.3'

SPRUCE 22 S10E 11.0'

8 X-17

X-17 off road

Quarter Corner Sects 34-35

From Notes on F.S Form 874 by
Lloyd W. Johnson dated 1934

Birch 8" S72°W 16 lks or 10.56'

(Now a 13" Birch with scribe marks
visible at record bearing & dist.)

Point for corner falls in old road.

1-20-65. J. McDonald R.D. Olsen

Notes of Orig. Govt. Survey of 1896

Set Birch post

fd. burned, rotted, remains of wood in ground

Birch 6" S72W 16 lks. = 10.6'

Now living 13" Birch at brg. ^{Rescribed Bt.} 1/4 s dist scribe visible

Balsam 8" S60E 20 lks. = 13.2'

Now rotten stp. at brg 1/4 dist.

1973 Curt Krause

old road runs north from corner and south to
wagner lake, new road to lake is 50' west
of corner and runs NW-SE to just south of cor.

Corner is approx. 345' south of F.R #2229

and approx. 500' east of wagner creek

Put FSLP on 4"X4"X7' Cedar post on south

side of F.R #2229 corner is south 320'

To perpetuate this corner I set a 2" dia.
5' long galvanized steel pipe filled with
concrete and capped with a 3" dia. brass
Tablet stamped.

TISON R28W

4

534 | 535

¹⁹⁷⁴
RLS NO. 6807
D60

Witnessed by

Birch 6" N64W 39.9' mkd. 1/4 S 34 Bt. ✓

Aspen 9" N25E 39.5' mkd. 1/4 S 35 Bt. ✓

W. Oak 14" S78E 112.4' mkd. 1/4 S 35 Bt.

ORIG. Birch 13" S72°W 10.6' mkd Bt. (Rescribed)

Set 8' steel sign post due south 2.6' with F.S.
signs 54-2 & 54-4 attached.

Set 8' steel sign post due west 2.4' with F.S.
sign 54-2 attached

5-8-74

Curt R. Krause

12/12/74 Wit. corner - evidence & ties

Don & Peppie

RLS 5333

9 V-13

V-13 *of* *Badant*

Section Corner 27-28-33-34

Notes of orig. Govt Survey of 1896

- 1 Tam. 18" N 75° E 11 kcs. (7.26') falls in road
- 2 Tam 24" S 3° W 56 kcs. (36.96')
- 3 Birch 8" S 80° W 21 kcs. (13.86') falls in road
- 4 B. Ash 8" N 8 1/2° W 39 kcs. (25.74')

1. Found a 24" stump mostly decayed
S 3° W 56° kcs or 36.96 feet.
 2. Found a Black Ash stub with "window
Blaze facing corner. N 8 1/2° W 39 kcs. or
25.74 Feet.
- Found a Cedar post with F.S. metal
location poster attached, on north
side of forest road 2229 indicating
corner is at this point. 1-20-65 RHM

Found large rotted tam. stp. with flat area
covered with moss facing to corner
at S 3° W 37.0'

found Ash stub 5' high at N 8° W 25.7'
with flat blazed piece of wood facing
corner no marks visible

Both stumps check close enough to
perpetuate corner

7-5-73

Curtis R. Krause

To perpetuate this corner I set a 5 1/2" x
5 1/2" x 24" concrete monument with 3" dia.
brass tablet stamped.

set 6" below surface
of road in south rutt -
5' north of south shoulder
4' south of centerline

TISON R28W

528 527

533 534

1974

R.L.S. NO. 6807

D&P

Witnessed by

- Elm 14" S 23° W 64.8' mkd. 533 Bt.
Ash 7" S 14° E 94.2' mkd. TISON R28W S34 Bt.
Elm 8" S 71° W 68.6' mkd. 533 Bt.
Ash 11" N 34° W 51.1' mkd. TISON R28W S28 Bt.
Set 4" x 4" x 7' Red top Cedar post due North
30.5' with F.S. signs 54-2, 54-9 attached.
5-9-74

Curtis R. Krause

12/12/77 With corner location of
evidence to corner - ties to corner
old & new

Dennis E. Papp

R.L.S. 5333

NOTE: SEE BOOK 2 Pg. 33

MORE INFORMATION

Quarter Corner Sections 27-34

Notes of orig. Govt Survey of 1896

Tam. 5" N 31° E 27 lks. (17.82')

Birch 10" N 82° W 18 lks. (11.88')

NOTES BY JOHN J. ROSE OCT 1922

FOLDER #1 Pg. 26

SHOWS DISTANCE OF 2642 FROM SE CORNER

SEC. 27 TO 5/4 SEC. 27

FD. POINT OF OLD POST AND 1 BT.

RANDOM LINE FELL 45.4' NORTH OF 1/4 POST

FOLDER #1 Pg. 30

SET OVER 1/4 BET. SEC'S. 27+34

RAN LINE SOUTH THROUGH CENTER OF SEC. 34

A DISTANCE OF 5305'

11-16-83 CK-WA-68

CHAINED FROM SEC COR. 27, 28, 33+34 EAST ALONG
FR # 2229 - 2640 FD. 6" CEDAR POST ON NORTH S/E
OF E+W ROAD WITH OLD TAG - STATES COR. IN CENTER
OF ROAD

5-13-87 CK-6B

CHAINED EAST FROM THIS APPROX. 1/4 COR. TO BEAVER
FLOODED AREA COULDN'T GET TO SEC. COR.
WILL HAVE TO OPEN DAM AND LOWER WATER
FOR SEARCH

11 N-21

N-21 off road

Section Corner to Sec's. 13, 14, 23 & 24

Notes of Orig. Govt. Survey of 1896

Set Aspen post

Spruce 10" N29E 33 lks. = 21.8'

found large spruce stp. at brg $\frac{1}{2}$ dist. rotted

Spruce 14" S38E 36 lks. = 23.8'

found large spruce stp. at brg $\frac{1}{2}$ dist. rotted

Spruce 12" S28W 5 lks. = 3.3'

found spruce stp. rotted at brg $\frac{1}{2}$ dist.

Balsam 16" N89W 18 lks. = 11.9'

found depression in grd. at brg $\frac{1}{2}$ dist.

Tasca County road notes 1918 by B. Graig

field book #31

fd. orig bt's. in good condition

Set 4" Balsam post for sec. corner

MKD. new bt's.

Spruce 18" S39E 61.2'

Now 24" rotted spruce stp at brg $\frac{1}{2}$ dist.Aspen 12" S3 $\frac{1}{2}$ W 41.2'Now rotted aspen stp. at brg $\frac{1}{2}$ dist.

Birch 20" N9W 47.7'

Now rotted stp. = log at brg $\frac{1}{2}$ dist.

C.C.C. notes by L.W. Johnson 1934

fd. post 2" x 2" x 40" burned

fd. Birch 16" N10E 72 lks.

Put FSLP on Aspen 5" N19W 47 lks.

Found point of burned & rotted post, also 1918

Birch log on ground well rotted

found FSLP on 11" Aspen snag N26W 47 lks. = 31.0'

Date 2-7-34 L.W. Johnson

7-19-73 Curt Krause

To perpetuate this corner I set a 2" dia. 5' long galvanized steel pipe filled with concrete and capped with 3" dia. brass tablet stamped

8/19/92 CK

IN PLACE - IN GOOD CONDITION

IN PATH OF WIND STORM 8/19/92

ERING IN SIGN POSTS - AFTER LOGGING

HAS BEEN COMPLETED

T.150N. R.28W.

S14 S13

S23 S24

1974

RLS NO.

Witnessed by

Aspen 10" S45E - 21.6' mkd. T.150N. R.28W. S29 BT

8/19/92 NOW ASPEN STUB 25' HIGH, SCRIBE VISIBLE

Aspen 7" S29W - 30.8' mkd. T.150N. R.28W. S23 BT

8/19/92 NOW A-KN STUB 25' HIGH, SCRIBE VISIBLE

Aspen 11" N41W - 43.5' mkd. T.150N. R.28W. S14 BT

8/19/92 NOW 14" ASPEN ALIVE SCRIBE OVERGROWN

E/M 8" N16E - 58.0' mkd. T.150N. R.28W. S13 BT

8/19/92 NOW ELM STUB 10' HIGH SCRIBE VISIBLE

Set 8' steel sign post due north 2.0' with F.S. -

sign 59-4 attached

SIGN POST OK

5-8-74

Curtis R. Krause

7" Cedar post on north side of FR # 2227

Sec. Cor. 15 242' North of post

Blazed line north to corner also painted red this day

Corner is in aspen - balsam - brush - hardwoods

North and west of corner.

8/19/92 SET 4X4 CEDAR POST ON NORTH SIDE OF FR 2227

225' NORTH TO SEC. COR.

12/10/74 Cert. corner, evidence & trees

Walter E. Krause

5333

12 C-21

C-21 Affidavit

Quarter Corner Bet. Sec's. 1-2

Notes of Original Govt. Survey 1896

Set Birch post E.d. point of orig. post

12" long in place - top of post well rotted

Tam. 16 N10E 321ks = 21.1'

Now large rotted tam. stp. at brg & dist. no scribe

Tam. 16 N10W 261ks = 17.2'

Now large rotted tam. stp. at brg & dist. no scribe

To perpetuate this corner I set a 2" dia X.

5' long galvanized steel pipe, filled with
concrete and capped with 3" dia. brass cap.

stamped

T150N R28W

set 8" steel sign post beside iron post

and wired both together

1/4
52 51

1976

Witnessed by

RHS NO.

Blk. Spruce 10 N10W 77.5' mkd. 1/4 52 BT

W. Spruce 10 N14E 68.2' mkd. 1/4 51 BT

W. Spruce 11 N53E 26.9' mkd. 1/4 51 BT

W. Spruce 12 S68E 60.1 mkd. 1/4 51 BT

Set 8" steel sign post due south 3.5' with F.S. signs

54-2³ 54-4

Set 8" steel sign post due east 3.4' with F.S. signs

54-2¹ 54-4

2-23-76 Curtis R. Kramer

Found point of orig post in place and both orig. tam. bearing trees at brg & dist. no scribe visible on either stump they are well rotted

Observed to this location from center of road to south - following old brushed line by Hasco Co. line is 20' east of orig corner post and continues north to top line.

Checked with county and they said they hadn't found anything, but there search was done in winter. Corner is approx. 95' north of small creek to Moose Lake.

Set 3" X 3" X 7" long tam. post at corner location and put F.S.L.P on 10" W. Spruce N53E 27.0' from tam. post

Corner in tam. & spruce sup. - high land is approx. 100' north of corner. Our distance, north from road center line to 1/4 corner was 2624

9-23-74

Curtis R. Kramer
John Pearson Blk&K dist.

13 E-21

Section Corner to Sections 1-2-11-12

Notes of Orig. Govt. Survey 1896

Set Cedar post

Cedar 10 N19E 131ks. = 8.6'

Tam. 14 S89E 171ks. = 11.2'

Balsam 5 S44W 41ks. = 2.6'

W. Pine 16 N59W 121ks. = 7.9'

NOTES BY JOHN J. ROSE (RHS) 12-11-25

FOLDER #5 PAGE 113

IN OLD ROAD - FOUND WHITE PINE STUMP

N59W 7.9' FOUND POINT OF OLD POST

UNDER CORDROY ROAD - ALL OTHER BT'S. GONE

SET NEW CEDAR POST - DROVE POST LEVEL

WITH TOP OF ROAD

Chained to this location from approx. 1/4 cor.
between sec's. 1-12 which is road tangent's
W-S distance, chained 2640'
Found old fence line running north and old brushed line
following fence line north to township line 1 mile north
No orig. evidence could be found - road construction
has taken all evidence of post & BT'S.
9-20-74

Carlo R. Krause

9-23-74

Searched with metal detector and located
an iron pipe, 1" dia. 3" below road surface.
checked with Itasca County Surveyor and he
said nothing was set by them at sec. cor.
and he had no idea who set iron pipe.
Believe it may have been set by John Rose
local surveyor that lived on Island Lake

Sept 23 1974 CRK

Wire fence line runs 1315 north at road then turns
and runs west

Set 4"x4"x7' Cedar post 24.0' north of iron pipe
at fence corner post wire runs W-N
9-30-74 CRK

8/6/92 CK 6B - Twp ITASCA COUNTY,

DUG WITH BACKHOE - HOLE 10'x10'x42" DEEP
WENT 14" BELOW CORDROY - NOTHING FOUND
IRON PIN WAS REMOVED - I DIDN'T RECORD IN NOTES
THAT IRON PIPE WAS BENT AND REPLACED WITH PIN
ON 9/23/74

14 V-21 V-21 Affidavit
Sec. Corner to Sec's. 25-26-35-36

Notes of Orig. Govt. Survey 1896

Set post Found point of orig post in place
top rotted off lying in swp. beside point

Tam. 7 N23E 21 lks. = 13.9'

Fd. Tam. 8" stub 36" high at brq³ dist. scribed T150N R28W S25 BT

Tam. 7 S50E 11 lks. = 7.3'

Fd. Tam. stump 8" at brq³ dist. with blaze and scribe BT

Tam. 6 S66W 8 lks. = 5.3'

Fd. rotted Tam. stp. at brq³ dist. no scribe visible

Tam. 6 N28W 9 lks. = 5.9'

Fd. wind fall frozen in swp. at brq³ dist.

To perpetuate this corner I set a 2" dia. X
5' long galvanized steel pipe, filled with
concrete and capped with 3" dia. brass cap
marked. (set 8" steel sign post T150N R28W

beside iron pipe and wired both together) S26 | S25
S35 | S36

Witnessed by

1976
RLS NO.

Blk. Spruce 7 N50W 64.0' mtd. T150N R28W S26 BT

Blk Spruce 6 N20E 49.9' mtd T150N R28W S25 BT

Blk Spruce 8 N52E 22.9' mtd. T150N R28W S25 BT

Blk Spruce 7 S28E 11.4' mtd. T150N R28W S36 BT

Blk Spruce 9 S33W 48.4' mtd T150N R28W S35 BT

Set 8" steel sign post due east 5.0' with FS sign 54-2

2-25-76

Curtis R. Krause

Corner found in Spruce Cedar & Tam swp. with many
windfalls and heavy under brush - an aspen balsam
ridge is approx. 120' east of corner
Put FSLP on 5" Blk. spruce N32°W 17.2' from 8" x 8" x 8"
Cedar post set at corner location
Checked land ties to east to pond and Fiska lake this
day and they check very good between sec's. 25-36

mtd iron pipe and taken into corner this day 12-3-75

Curtis R. Krause

Set 8" Cedar post 1' north of iron pipe and attached
FS signs 54-2 and 54-4.
Cedar post is squared and scribed sec. cor. on 4 sides

15 N-9, 10

Meander Corner Bet. Sec's. 16-21
on east shore of Island Lake 23.20 chs.
west of 1/4 Bet. Sec's. 16-21

Notes of Original Govt Survey 1896

Set post

Cedar 6 N70E 11 lks. = 7.3'

Found Cedar at brq. dist with scribe ^{ATZ CK} visible.

Birch 10 S88E 11 lks. = 7.3'

NOTES BY JOHN ROSE 8/21/32 FOLDER 16 Pg. 14

FOUND BOTH GOV'T. BT'S. - POST GONE

SET 1/2 IRON PIPE FOR PERMANENT CORNER

1535.1 FROM 1/4 COR. BET SEC'S. 16+21

ORIGINAL DISTANCE WAS RECORDED AT 23.20 CHS. OR
1531.2'

7/8/81 CK-6B

WITH SCRIBE VISIBLE TISONR28WS/6MC BT
FOUND CEDAR STUB 9" X 12 HIGH N70E - 7.3

FOUND LIVE BIRCH 17" S88E - 7.3 SCAR - OVERGROWN

BOTH ORIG. BT'S. ARE LEANING TO LAKE

IRON HAS BEEN PUSHED OUT BY ICE ACTION - NO TRACE

FD. 10" CEDAR WHICH HAS BEEN BLAZED ETW

BETWEEN BOTH ORIG. BT'S.

CORNER NOW WOULD FALL IN ISLAND LAKE ABOUT

3.5' VERY ROCKY SHORELINE - WILL SET

WITNESS CORNER

CC DONE

CERTIFICATE FILED

7/8/81 CK-6B

SET 2" X 36" IRON PIPE WITH BRASS CAP MKD.

WITNESS CORNER IS ON
LINE BETWEEN REESTA-
BLISH - MC POSITION
AND SECTION COR. TO EAST

TISONR28W
WC, MC

12.45' S16

← S21

1981

PILED ROCK AROUND 2" IRON

RLS NO.

WITNESS BY

CEDAR 9 N8E - 7.33' ^{AND} TISONR28WS/6WCMC BT

CEDAR 13 N72E - 11.48' " " " " "

CEDAR 9 S55E - 18.23' " TISONR28WS/21WCMC BT

5" CEDAR N46E 2.1 WITH 54-9 ATTACHED

THE ORIGINAL BEARING TREES FROM WITNESS CORNER
NOW STAND AS FOLLOWS

CEDAR STUB 9" N80W - 7.28' BACK SIDE

BIRCH 17" S72W - 6.85' BACK SIDE

16 R-1

Sec. Cor. to Sec's. 19-24-25-30
West Boundry of TISON R28W
Notes of Original Gov't. Survey 1891

Set post

Tam. 10 N42E 22 lks. = 14.5'

Ed. WELL ROTTED STP. AT BRG. 1/2 DIST.

Balsam 8 S46E 10 lks. = 6.6'

Balsam 6 S14 1/2 W 10 lks. = 6.6'

Cedar 10 N44 1/2 W 48 lks. = 31.7'

Ed. 18" CEDAR AT BRG. 1/2 DIST. PARTLY ALIVE SCRIBED
TISON R27W S24

1982 UNDER CONTACT WITH WM. H. OKERMAN RLS 6207

LINE TO STANDARD N 45 FROM ABOVE SEC. COR.

Ed. 1 1/2" X 48" CO. MONU. IN PLACE

Ed. 10 TAM. STUMP N42E 14.52' ORIG. BT

Ed. 18 CED. LIVING-SCRIBED N44W 31.87' ORIG. BT

REMAINS OF COUNTY BT

BIRCH SNAG 6 N17E 29.92'

BIRCH 7 S26E 5.3'

BIRCH 11 S50W 31.09'

SIGN POST E 1.3' W/54-9

Ed. 1 1/2" X 48" IRON PIPE WITH ALUM. CAP
ITASCA COUNTY MONUMENT

Ed. COUNTY BEARING TREES SCRIBED

BIRCH SNAG 8 N17E 24.5' TISON R28W S19 BT
DOWN

BIRCH 7 S26E 5.3 TISON R28W S30 BT
ROTTED STP

BIRCH 12 S50W 31.3 TISON R29W S23 BT
BIRCH CLUMP / SCRIBED BIRCH FALLEN DOWN
SET 4X4X8' TAM POST BESIDE IRON

APPROX. 150' SOUTH TO HIGHLAND
225' NORTH TO HIGHLAND
CORNER IN BIR. SPRUCE + BALSAM - BRUSHY SWP.

12-22-77 CRK

9-10-2012 R. MAEN

Ed IRON PIPE. STRAIGHTEN AND GPS
SURVEY GRADE. FIND ON COUNTY BT

ASH 4" NOBE 32.0' TO SPK/WASHER NOT SCRIBED

12-06-2012 BY: GLR

17 P-1

Quarter Corner Bet. Sec's. 19-24
West Boundry of T150 R28W

Notes of Orig. Gov't. Survey 1891
Set post

Tam. 10 S52W 371ks. = 24.4'

Cedar 10 N73E 371ks. = 24.4'

1/4 24-19 T150 N R29-28W

CO BT'S. 1965

SPR. 6 N65W 36.50'

SPR. 9 S73E 19.00'

1/4
24/19

1982 Fd 1/2 CO. MONU.

SPR. 12 S68E 19.43

SPR. 6 N60W 36.89

S.P. E 1.3'

S.P. N 4S APPROX. 15'

TAM STP. (ORIG) S52W 24.4' ROTTED
CED. STP. ORIG. N73E 25.2'

Fd. 1 1/2" X 48" IRON PIPE WITH ALUM. CAP
ITASCA COUNTY MONUMENT

Fd. COUNTY BEARING TREES SCRIBED

BLK. SPRUCE 12 S68E-19.1' T150 N R28W 1/4 S19 BT.
NOW A 5' TALL STUMP

BLK. SPRUCE 6' N60W-36.6' T150 N R28W 1/4 S24 BT.
NOW A WIND FALL

SET 3" X 3" X 6" ASH POST BESIDE IRON

APPROX. 125' WEST TO HIGHLAND

250' SOUTH TO HIGHLAND

CORNER IN BLK. SPRUCE - BALSAM - ASH - BIRCH - BRUSH

9-10-2012 R MAIN

Fd IRON IN PLACE AND GAS SURVEY GRADE.

18

Sec. Cor. to Sec's. 13-18-19-24.
West Boundry of TISON R28W
Notes of Orig. Govt. Survey, 1891

Set post

Tam. 11 N16 $\frac{1}{2}$ E 181ks. = 11.9'

Tam. 12 S34 $\frac{1}{2}$ E 401ks. = 26.4'

Tam. 10 S38W 361ks. = 23.8'

Tam. 12 N54W 231ks. = 15.2'

TISON R 29 28 W

$$\frac{13}{24} \frac{18}{19}$$

ASH 6 N52W 6.53 513

CED. 11 N8E 16.95 518

FISH 6 S28W 13.70 524

ELM 5 S4W 24.16 524

S.P. E 1.2' 54.9

S.P. S 15' APPROX. 54.2

1965
CAP & IRON BY CO,

1882

FD. 1 1/2 IR.

CO. BT. OK

NEW DIST. & BEG.

FROM CERT.

19 N-23

Quarter Corner Bet. Sec's. 13-24
Notes of Orig. Govt. Survey 1896

Set post

Spruce 10 S5W 5 lks. = 3.3'

Spruce 8 N35E 7 lks. = 4.6'

ITASCA COUNTY ROAD SURVEY 1918

By B. Craig Record Book 31

Found orig. BT's. in good condition

Set spruce post

Balsam 8 S11W 40.8'

Dead Tam. 16 N16E 39.6'

Fd. large log lying in swp. north side of FR #2227

CCC notes 2-13-34 By L.W. Johnson

Fd. post 3"x4"x32" scribed 1/4 S13 - 1/4 S24

No BT's. Found

Put FSLP on Birch stub corner post

bears N25W 20 lks = 13.2'

cc

Believe corner now may be, in shoulder of road
or some place in north part of road
Found large Tam. log lying in small swp. on north side
of road - Found FSLP on 6' Cedar post north edge of
road - states tag location to be approx. cor.

1/2 hr. search time. 5-6-74
more search could uncover
possible evidence of corner Curtis R. Klause

NOTES BY JOHN J. ROSE (RLS) 1925

FOLDER #5 PAGE 123

Fd. POST + 2 BT'S. 1209.5'
ROSE SHOWS DISTANCE OF 1208.7' FROM SE COR. SEC. 13
APPROX. COR. AREA HAS BEEN DESTROYED BY ROAD CONSTRUCTION
NEW FR 2444 RUN SOUTH 1990

20 N-3

QUARTER CORNER BET. SEC'S. 18-19

NOTES OF ORIG. GOV'T SURVEY 1896

SET WOOD POST Fd. TOP 18" OF ORIG.:

POST - POINT IS BESIDE 7" FENCE POST

TAM. 6 N86E 28 IKS. = 18.5'

Fd. TAM STR. AT BRG. DIST. FAINT SCRIBE VISIBLE

TAM. 7 S37W 7 IKS. = 4.6'

Fd. WELL ROTTED STR. AT BRG. DIST.

9-17-2012 R. MAIN

GPS MONUMENT SURVEY GRADE

CERTIFICATE FILED

Fd. 7" CEDAR FENCE POST SCRIBED 1/8" ON N. S. SIDE - WITH 2 STRANDS OF BARBED WIRE STAPLED TO NORTH SIDE OF POST
WIRE RUNS E-W FROM POST - NO WIRE SEEN RUNNING SOUTH

APPROXIMATE DISTANCES TO HIGHLAND

125' SOUTH

225' WEST

550' EAST

CORNER IS IN BLK. SPRUCE - TAM - BALSAM SWAMP

12-23-77 CRK

1981 CR 68 TB

SET: Brass Capped Iron Pipe 5'

marked

TISON R28W

1/4 578

519

4/25 1981

NO 1268

SET BT:

TAM 10" N37W 56.6' WINDFALL

TAM 7" N49E 19.95' WINDFALL & scribed

TAM 8" S77E 31.10' WINDFALL

TAM 9" S04E 24.55' TAIL SNAG

6/6/84 J. ANSON

21 V-5

Section Corner to Sections 30, 29, 31
Notes of Original Govt Survey 1896
Set Birch Post

Aspen 12 N42E 15 Iks = 9.90

no evidence

Aspen 12 S72E 20 Iks = 13.20

no evidence

Aspen 18 S46W 46 Iks = 30.36

no evidence

Aspen 6 N62W 36 Iks = 23.76

no evidence

Itasca County Road Survey 1914

Ash 6 N42E 41.3'

no evidence

Poplar 8 N48W 47.0'

no evidence

Poplar 13 S46W 49.7'

no evidence

Ash 11 S54E 63.0'

no evidence

CERTIFICATE FILED
6/27/83
JA GB

Dug hole 8' x 12' down 4 1/2' ± 1' below
original ground with backhoe

Fd: 4" x 8" wood post (up & down)
badly decayed down 3 1/2' in intersection
of roads N & S & W
no evidence of Bts were found

6/27/83

JA GB

Used position above to monument

SET: 2" x 36" galvanized Iron Pipe filled
with concrete and capped with a 3" dia
brass tablet stamped. T150N R28W
down 8" below old road.

S30 | S29

S31 | S32

1983

Witnessed by

Ash 7" N34E 40.15' T150N R28W S29 BT No. 14671

Ash 5" S49E 46.75' S32 BT S29 BT

Ash 12" N62E 41.50' T150N R28W S29 BT

Ash 5" N53W 45.15' S30 BT

J. Allison

22 R-7

Quarter Corner to Sections 20-29
Notes of Original Govt Survey 1896
Set a Tamarack Post

Tam. 6" N10E 14 1/2 LKS 9.57

REMOVED BY ROAD CONST.

Tam 4" S14E 9 LKS 5.94

REMOVED BY ROAD CONST.

J. Rose surveyed in section 20 in 1927
He indicates an angle $183^{\circ} 50'$ at this
position and distances of 2640' to the
SE of sec. 20 and 2636.2' to the SW
of sec. 20. No additional monumentation
is given. folder # 17 p. 84

CERTIFICATE FILED 6/28/83
CK GB JA

π

SET: 2" X ^{24"} ~~36"~~ galvanized Iron Pipe filled
with concrete and capped with a 3" dia. brass
tablet down 2" in road stamped

REMOVED 2" X 36" I.P. BECAUSE CAP
BROKE OFF IN REMOVAL OF MONU.

TISON R28W

SET 2" X 24" CAP MK SAME
11-15-83

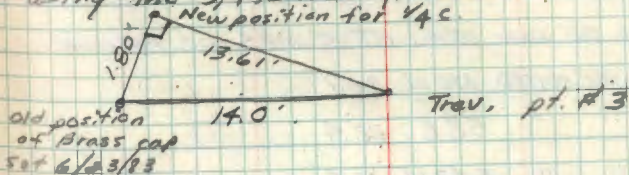
520.
4
529
1983
R/S No 1467

Witnessed by

Black Spruce 10" N23W ~~93.00'~~ ^{93.00' CK 11-15-83} 4520 BT
White Spruce 7" N34E ~~87.62'~~ ^{87.62' CK 11-15-83} 4520 BT
Black Spruce 8" S66W ~~95.15'~~ ^{95.15' CK 11-15-83} 4529 BT

Corner was set by occupying pt 3 back starting
pt 4 and turned ± 180 and lined up old fence
line going north and ditch line going south
Corner is set 14.0' from pt 3 on a straight line
from pt 4.

This corner position was changed 11/15/83 by
using the 3-4-5 triangle.



This corner was moved to be in the proportionate
position E-W bet. sec. cor. 19/20 to 20/21 and
20/29 to 29/28
supporting Resid. distance to the E of sec. 20, the
old fence north and the ditch line south

23 R-9

SECTION CORNER TO SEC'S 20-21-28-29

NOTES OF ORIG. GOV'T. SURVEY 1896

SET WOOD POST

BALSAM 5 N67E 20 1/2 LKS. 13.5'

FD. WELL ROTTED STP. LEVEL WITH SWP. AT BRG. & DIST.

SPRUCE 10 S7 1/2 E 34 LKS. 22.4'

FD. WELL ROTTED STP. LEVEL WITH SWP. AT BRG. & DIST.

SPRUCE 10 S43W 25 LKS. 16.5'

FD. WELL ROTTED STP. LEVEL WITH SWP. AT BRG. & DIST.

SPRUCE 6 N6W 38 LKS. 25.1'

FD. WELL ROTTED STP. LEVEL WITH SWP. AT BRG. & DIST.

NOTES BY J. J. ROSE LAND SURVEYOR 4-13-31

FOUND NEW POST PROPERLY MKD. AND REMAINS OF

3 ORIG. BT'S TO SEC'S. 20-21 & 28 FOLDER # 9 PAGE 74

FOUND DECAYED POST POINT 4" X 12" AND TOP OF SQD.

POST 14" LONG IN PLACE IN SWAMP GRASS WITH ALDER

AND WILLOW BRUSH AND ROTTED & BURNED STUMPS LEVEL

WITH TOP OF SWAMP

FD. REMAINS OF ALL ORIG. BT STUMPS AS FOLLOWS

SPRUCE STP. WELL ROTTED N6W 25.1'

" " " " S8E 22.4'

" " " " S43W 16.5'

BALSAM " " " N67E 13.5'

CERTIFICATE FILED

23

CHAINED SOUTH FROM POST FOUND AT MC. COE, BET. SEC'S.
20-21 1595' ORIG. DIST. 29.26 CHAINS OR 1601.2'
TO SEC. COR. TREES CHELK GOOD ALSO CHAINED FROM 1/4 COR.
POSITION BET. SEC'S. 20-29 EAST ALONG RIDE ROAD 1320'E
FOUND SAME IN E. OF N. 5 ROAD CONT. E ALONG OLD FENCE LINE
WHICH WANDERS EITHER SIDE OF LINE AND NAILED TO TREES TO TOP
OF RIDGE ENTER SW. 1200' TO SEC. COR. TOTAL DISTANCE 2640'
20-21-28 CK-68 JA-14

TO PERPETUATE THIS CORNER SET 2" DIA. X 5' LONG
F.S. MONU. WITH 3" DIA. BRASS TABLET MKD.

PLACE TWO PIECES OF OLD POST
BESIDE IRON PIPE

TISON R28W

S20 1/2 S21

S29 1/2 S28

1983

RLS NO 19677

WITNESSED BY

TO PERPETUATE ORIG. BEARING TREE STUMPS WE PLACE 8"
STEEL SIGN POST IN OR NEAR EACH STUMP AS FOLLOWS

8" STEEL SIGN POST N9W 25.5' 1/2 54-9 ATTACHED

" " " " S7E 22.1' " " "

" " " " S45W 16.2' " " "

" " " " N67E 13.7' " " "

11-15-83 CK-JA-68

24 T-9

QUARTER CORNER BET. SEC'S, 284-29

NOTES OF ORIG. SOUT. SURVEY 1896

SET WOOD POST

ASPEN 6 S12 $\frac{1}{2}$ E 17 LKS. 11.2'SPRUCE 11 S78 $\frac{1}{2}$ W 41 LKS. 29.0'

NOTES BY J. J. ROSE LAND SURVEYOR 1929 31

CORNER POSITION REESTABLISHED BY PROPORTIONAL

MEASUREMENT BETWEEN SEC. COR'S.

FOLDER #9 PAGE 86

SET 2" X 18" KING BOLT FOR $\frac{1}{4}$ COR. AND WITNESSED BY

ELM 16 S8W 66.8'

NE COR. OF HOUSE S37W 112.0'

FENCE POST S23W 52.2'

A SEARCH WAS MADE AT DISTANCE CHAINED UP FROM SOUTH YEARS AGO AND NO EVIDENCE OF KING-BOLT OR BT'S. REMAINED - DISTANCE FALLS IN GARDEN EAST OF JACK STEWART'S HOUSE 130' - OLD HOUSE THAT STOOD TO SW WAS TORN DOWN AND BASEMENT WAS FILLED YEARS BEFORE - ELM THAT STANDS TO SW WAS CUT INTO WITH CHAIN SAW BUT NO SCRIBE WAS FOUND INSIDE - TRAVERSE WAS THEN RUN IN SPRING OF 1983 TO DETERMINE POSITION FOR $\frac{1}{4}$ COR.

CERTIFICATE FILED 24

SPIKE WAS SET FROM TRAVERSE POINT TO N OF COR. POSITION - DISTANCE TO 26" ELM IS 66.8' BR. S. S16W THIS ELM THEN IS ROSE'S BT MAY NOT HAVE BEEN SCRIBED OR WE CUT INTO AT WRONG POSITION - BECAUSE THIS TREE IS NEAR JACK'S YARD AND IS STILL ALIVE WE DON'T WANT TO CUT INTO OR KILL HIS TREE AND ACCEPT IT'S POSITION BEYOND ANY DOUBT

AT POSITION OF SPIKE AND TO PERPETUATE THIS CORNER SET 2" X 5' LONG F.S. MONU. WITH 3" DIA. BRASS CAP MKD. 4P 1.5'

PLACE MAGNETIC PELLET IN CLAY UNDER MONU. IN GARDEN

TKSDN R28W

 $\frac{1}{4}$

S29 | S28

1983

RLS NO 14677

WITNESSED BY

ELM STP. 20" N50W 88.10' MKD. BT

W. SPRUCE 16" N31E 184.80' MKD. 1/4 S28 BT

ELM 14" S89E 180.10' MKD. 1/4 S28 BT

ROSE'S ELM 26" S16W 66.80' NAIL AND TAG

TIE TO JACK STEWART'S LOG HOUSE NE COR. BR. S. S69W 132.0'

11-14-83 CK-JA-GB

25 V-9

Section Corner to Sec's 29, 28, 32, 33
Notes of Orig. Govt Survey 1896
SET appen post

BIRCH 10" N59E 16LKS (10.56')
no evidence

SPRUCE 10" S80E 24LKS (15.84')
no evidence

TAM. 15" S75W 17LKS (11.22')
no evidence

SPRUCE 20" N30W 7LKS (4.62')
no evidence

NOTES BY J. T. ROSE RLS 1931 Folder 9 P. 25
Fd no original evidence - SET corner

by lost methods - double proportionate
SET 1" x 3/8" steel bar

marked:

ROCK 3' 23.6' x on top
FL rock SW has been moved around

Aspen 7" S-W 78.6'
no evidence

5/80 CK JS

Chained west of "4 2636' then chained
east 1318' then chained north of "4
2626' - all three distances put approx position.
In center of road east-west. Searched
for iron with metal detector. no evidence fd.

CERTIFICATE FILED 25

11/14/83 CK 6B JA SET FROM COMPUTED POSITION (SPK)
marked.

SET: Brass capped iron pipe 2"
down 10" with magnetic pellet
under 15.4. 8" 529 528

Bearing Objects: 532 533

Steel sign post 2"x8" N45W 49.20' RLS 1983 NO 146
Steel sign post 3"x8" N45E 49.18' ATT signs

Steel sign post 3"x8" SOUTH 42.20' ATT E Bdry signs
Line to standard South 1/2 mile

CORNER FALLS IN NORTH WHEEL TRACK OF EXISTING
ROAD - WILL CHANGE WITH NEW ROAD IN 84

6/5/84 J. Allison

26 U-8

EAST 1/4 SEC. 29 & 32

NOTES OF J.J. ROSE RLS 1931 Folder 9 p. 79

p. 87

SET: Iron bar 1" x 1/4"

Fence post N40E 45.6

" N70E 51.9

Balm. 16" S52W 49.6

5/6/80 CK: J.S

Fd: 1 1/4 x 1/4" Iron bar in place 3"

below ground

Fd Balm of Gil 17 S60W 49.6 ^{scar} 50' to 55' W. W.~~7/81 CK: GB~~~~Fd: 1 1/4 x 1/4" Iron bar~~~~marked~~~~SET: Brass capped Iron pipe 3' TISON R28W~~~~down 4" below ground~~~~529~~~~with Iron bar on north side of B.C.~~~~532~~~~Root ring around top of B.C.~~~~1981~~~~BTs Balm. 6" N6W 40.30 E 1/4 529 BT~~~~Balm. 9" N61W 55.30 E 1/4 529 BT~~~~Balm. 7" S42W 44.60 E 1/4 532 BT~~~~Aspen S55E 71.10 E 1/4 532 BT~~~~Cedar Post 4x4x8 WEST 3.1~~

CERTIFICATE FILED 26

1/9/83 JA BT RL - Ramped B.C. at Rose's position

marked

SET: Brass capped Iron Iron 3'

down 8" below ground at new position TISON R28W

529

BTs: Destroyed or remarked old BTs (81) E 1/4

532

Balm of Gil 9" N68W 72.70

532

Balm of Gil 7" S58W 59.20

1983

RLS NO. 146

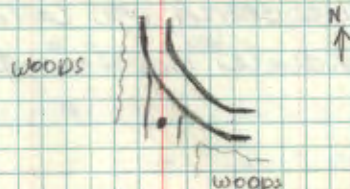
Balm of Gil 9" S39E 56.35

Bladed & scribed spr
tag and red ring

Balm of Gil 6" N36W 49.40

Wood post 7" S86W 30.82 FSLP

Wood post 4x4x8 N89W 22.27 ATT sign

CORNER FALLS 40' SOUTH and WEST of ROAD NORTH
and EAST. LEFT IRON (ROSE'S) down 2' at his position
which is 18' WEST of NEW B.C.

6/5/84

Jff Allison

27 V-7

QUARTER CORNER BET. 29 & 32

NOTES OF ORIGINAL GOVT SURVEY 1896

SET BIRCH POST

SPRUCE 8" S20W 4 1/2 LKS 3.0'

no evidence fd

BALSAM 5" N14E 14 LKS 9.2'

no evidence fd

NOTES BY J.J. ROSE RLS. Folder 9 p. 78-84 (1931)

FD: Both original 1st stumps

SET: NEW TAM POST

SET TAM POST IN ORIG. B.T.S. STUMPS

7/28/81 CK-GB-TB

Chained true west from B.C. of E 1/4 Sec
29 & 32 1323' distance by J. ROSE - NO
evidence fd

8/83 CK-GB-JA

Ran traverse and from computations,
an extensive search was carried out
and no evidence was found

CERTIFICATE FILED 27

A position was determined for this corner
by proportionate methods using the record angle
and distances of John Rose's 1931 survey:

8/30/83 CK MH JA - set from traverse

SET: 5' Brass capped Iron Pipe marked
up 1.5' with rock mound. TISON R 28W
around base of B.C. 529

witness by:

Balm of Gilead 9" N80W 31.15

Balsam 5" N02E 25.10

Balm of Gilead 11" S47E 45.28

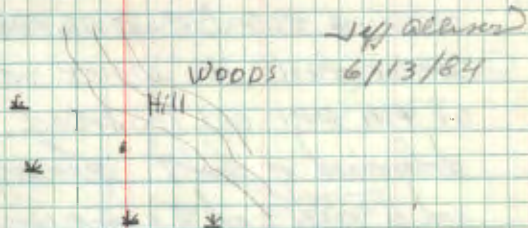
Elm 5" S02E 44.97

Steel sign post 3"x8" SOUTH 4.0' ATT and Bdry

steel sign post 3"x8" WEST 4.0' ATT and Bdry

114
532
As 1983
NO 142

Blazed and scribed
spk tags and ring



Section Corner to Sections 19, 20, 29, 30

NOTES OF ORIG. GOVT SURVEY 1876

SET: Aspen post

Aspen 12" N23½E 30 LKS (19.8')

Elm 10" S1E 24 LKS (15.84')

Elm 6" S41½W 6½ LKS (4.29')

Aspen 10" N4W 35½ LKS (23.43')

NOTES by J.J. Rose Land Surveyor 4/16/27

He indicates a distance of 2636.2' from the ¼ sec 29 & 20 to the Q of State Hiway

Chas Johnson testified that the Bergville School fence is 33' north of Q of road

between 20-29. (folder #17 page 86, 87)

Rose's distance to ¼ sec. 19 & 20 is 2631.4

5/10/83 KW, MH, CK, JA, GB

searched for B.T.S. - no evidence found

Corner falls in approximately 15 feet of fill over old road bed. A position was determined at the "T" intersection of the N-S and E roads and a spike was set. This is as per the 1914 State Rd #3 Survey and

(cont) The 1912 Map of Ardenvest Twp. The distance we measure from this spike to the ¼ cor. sec. 19 & 20 is 2631.33 ft. and to the area of the ¼ cor. sec. 20 & 29 is 2636 (E).

4/2/83 CK GB JA - SET CORNER FROM K.W. SPT
 Brass capped Iron Pipe 2" marked TISON R286W
 down 8" in road 519 520

530 529

1983
 RES NO 14677

WITNESS BY:

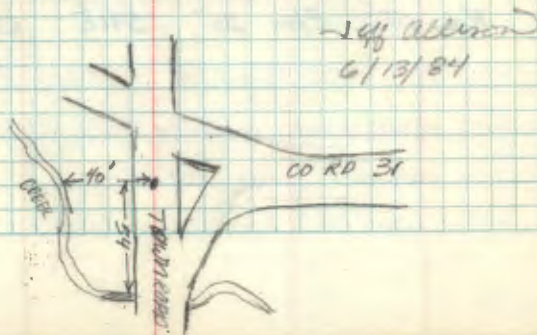
W. Spruce 19" N4E 163.75' BT

Balcony of Gilead 7" S2W 154.40' TISON R286W 530 BT

W. Spruce 11" S56W 88.80' TISON R286W 530 BT

WOOD POST 4" x 8" N88W 13.5' FSLT & ATT.

SW CORNER TOWN HALL N48E 96.57' PK 1½' up

N
 ↑

Quarter Corner to Sections 20 & 19

NOTES OF ORIGINAL GOVT. SURVEY: 1896

SET WOOD POST

TAM 12" N55E 20LKS 13.2'

no evidence - road

TAM 12" N35W 7LKS 4.62'

no evidence - road

NOTES OF J. ROSE RLS 1927 - F17 Pg. 88

SET 1" x 36" iron pipe for corner a
position established by testimony of
area landowner: Chas Johnson, Martin
Nesseth, and J.F. Anderson.

marked BTS:

SPRUCE 6" N32W 69.2'

Removed by road activity (barrow area.)

Elm 10" S47E 65.7'

Fd still standing

7/20/81 CK - GB - TB

Fd: 1" IRON Bent TOP 10" broken off

Fd BTS: Elm 20" S41E 65.7' scribe closed

7/20/81 CK GB TB

SET: 2" Brass capped Iron Pipe - T150N R28W
down 8" with Iron below B.L.

marked

14

519-520

1981

RES NO 12684

SET BTS:

Ash 4" N22W 113.60' X BT

ASPLN 6" N49E 67.05' 14520 BT

Ash 8" S50E 100.05' 14520 BT

Steel sign post 8' NORTH 36.63'

CORNER IS IN SOUTH SIDE OF ROAD EAST
WEST END IN $\frac{1}{4}$ OF OLD ROAD SOUTH

6/6/84 J. Allison

QUARTER CORNER BET. SEC'S, 32 & 33

NOTES OF ORIG. GOV'T. SURVEY 1896

SET WOOD POST

NO TRACE OF POST IN 1931

SPRUCE 14 S29W 4 1/2 LKS.

NO TRACE OF THIS BT IN 1931

BALSAM 14 N76E 29 LKS.

ROSE FOUND THIS BT IN 1931 - WINDFALL (PLAINLY MKD)

NOTES BY JOHN J. ROSE - LAND SURVEYOR - 4/13/31

FOLDER #9 PAGE 76 & 77

SET 1" X 36" STEEL PIPE

BALM-OF-GILEAD 13 S70E 28.4'

NO TRACE OF THIS BT REMAINS 7/30/81

BALSAM 14 N77W 21.9'

NO TRACE OF THIS BT REMAINS 7/30/81

ELM 10 S-W 29.5'

NOT SURE OF STUMP FOUND TO SW WAS UNDER WATER
AND WELL ROTTED S45W 30'

SPRING 1980 CK-WO-

CHAINED NORTH FROM SEC. COR. 4-5-32-33 ON TSP. LINE

2637' N - FOUND ROSE'S IRON PIPE BENT IN MOUND OF ROCKS

IN CENTER OF OLD TOWNSHIP ROAD GRADE N 4 S

BEAVER HAVE A DAM TO SW OF CORNER - AND CORNER NOW

SITS IN APPROX. 16" WATER DEPTH - NO BT'S OF ROSE'S ARE

STANDING - BUT THEY COULD BE UNDER ICE - AS STUMPS

SET 3" SQD ASPEN POST NEXT TO IRON
HIGHLAND RIDGE IS 20' EAST OF CORNER NOW ICE & SNOW
AREA FLOODED IN NW-W - SW OF CORNER LOCATION
BILL OKERMAN SAID IRON CHECKED OUT GOOD BY CHAINING
AND IS IN PLACE STATED AS PER ROSE'S NOTES
ACCEPT POSITION AS TRUE 1/4 CORNER

7/30/81 CK-6B

NOW MONUMENT CORNER WITH 2" DIA X 5' LONG
F.S. MONUMENT WITH BRASS CAP MKD.

DROVE 8' SIGN POST BESIDE F.S. IRON
REST EDGE OF CAP ON TOP OF SIGN POST
PLACE ROSE'S IRON - BETWEEN F.S. MONU.
AND SIGN POST - WIRED TOGETHER
PAID ROCKS AROUND IRON'S
IN 16" OF WATER - MONU. IS 10" ABOVE
WATER

WITNESSED BY

8' STEEL SIGN POST N37E 36.7' F.S. SIGN 54-9

BALM-OF-GILEAD 12 N62E 104.35' MKD 1/4 533 BT

ROCK 3' X 4' EGG SHAPED AT POINT ON TOP CHISELED

X AT 559E-39.40'

8' STEEL SIGN POST 559E - 40.95' F.S. SIGN 54-9

8' STEEL SIGN POST 3.3' NORTH BOTH SIGNS

8' STEEL SIGN POST 3.8' EAST BOTH SIGNS

T150N R28W

1/4
532 | 533

1981
RLS NO 6807

QUARTER CORNER BET, SEC'S, 28 & 33

NOTES OF ORIG. GOV'T. SURVEY 1896

SET WOOD POST

ASPEN 8 N80E 6 LKS.

BIRCH 6 S55E 16 LKS.

NOTES BY JOHN J. ROSE 1931

FOLDER 9-Pg. 83

FOUND BOTH GOV'T BT'S.

SET IRON PIPE WITH AN ELBOW ON TOP FOR

PERMANT 1/4 CORNER

MARKED NEW BT'S.

BIRCH 8 N32W 44.5'

BLACK ASH ~~7~~ S4E 43.1'

DISTANCE FROM SEC. COR TO EAST TO 1/4 COR. 2641.2'

5-5-80 CK JS

FD. 1 1/2" X 16" IRON PIPE WITH ELBOW AT TOP - 24"
BELOW E+W FR # 2229 - ROAD IS IN ASH SWAMP
ROAD WAS ~~24'~~ BUILT OVER IRON

FD. BLK ASH 12 S4E 40.35' HAS SCAR
LARGE ROCK AT WEST EDGE OF IRON
FD. OLD FSLP ON 6" CEDAR POST NORTH 13.7'

SET 2" X 24" IRON PIPE WITH CAP MARKED

RESET ROSE IRON AT WEST
EDGE OF RS. MONUMENT

TISON R28W

1/4 S28

S33

1980

CAP IS 10" BELOW ROAD

RLS NO 12684

WITNESSED BY

ASH 9 S43W ^{58.40}~~53.40~~ MKD. 1/4 S33 BT

ASH 12 S4E 40.35' " 1/4 S33 BT

ASH 7 S53E 91.68' " 1/4 S33 BT

ASH 10 N50E 30.60' " 1/4 S28 BT

8/17/93

ASH S53E NOW WINDFALL

ASH N50E NOW HAS BEEN GRUBBED OUT BY ROAD
RECONSTRUCTION IN 1985

ASH 14" S64E 63.55 FT MKD. 1/4 S33 BT

8" STEEL SIGN POST NORTH 23.85'

EAST $\frac{1}{16}$ BET. SEC'S. 28 & 33

NOTES BY JOHN J. ROSE

FOLDER 9 Pg. 86

SET $\frac{1}{16}$ CORNER A 1" X 3' STEEL BAR

FOR PERMANT CORNER

MARKED NEW BT'S.

SOFT MAPLE 8 NZBW 32.0'

ASPEN 6 S23E 32.3'

1320.6' FROM $\frac{1}{4}$ CORNER TO WEST

Fd. MAPLE STUMP 12" N22W 32.0'

Fd. ASPEN STUMP SIHE 32.3'

7/27/81 CK-6B

SET 2" X 24" IRON PIPE WITH BRASS CAP MKD.

TISON R28W

E $\frac{1}{16}$ $\frac{S28}{S33}$

1981

RLS NO

ASH 7 N17E 38.20' MKD E $\frac{1}{16}$ S28 BT

ASH 13 N49W 51.40' " E $\frac{1}{16}$ S28 BT

W. OAK 7 S72W 72.45' E $\frac{1}{16}$ S33 BT

6" CEDAR POST DUE NORTH 15.25'

8/17/93 RM-CK

Fd. IRON IN ROAD

NW ASH TOP BROKEN OFF - BUT HAS GREEN LIMBS

OAK + OTHER ASH OK

8' STEEL SIGN POST 25.65' NORTH

Quarter Corner bet. Sec. 29 & 30

NOTES OF ORIGINAL GOVT SURVEY OF 1896

5CT. WILLOW POST

TAM 8" S22½E 75.13 49.5

WILLOW 4" S17½W 67½LS 44.55

NOTES ITASCA COUNTY ROAD SURVEY 1914

Fd. GOVT BTS

TAM 10" S22E 50.0'

WILLOW 4" S17W 44.0'

5/10/83 R.W. MH. CK GB JA

Searched for corner from traversed computations.
 Could not locate any evidence. This position
 falls in floating bog near Burgville Lake.

4/23/84 CK JA GB

Since computed position for this corner
 can not be occupied or monumented a
 witness corner was set by traverse
 SOUTH on section line 265.21'

4/23/84

5CT. BRASS LAPPEL IRON PIPE 5
up 16" above groundMARKED:
TISON R28W

MARKED BTS:

B. of Gil 4" S52E 13.95'

P. of Gil 7" S14E 17.80'

B. of Gil 8" N35W 18.90'

STEEL SIGN POST 8' SOUTH 3.13' ATT. & Bday

265.21' ↑
1/4 WC

S30' S29'

R/S 1984

No. 146

14 S29 WC BT

spike face
red ring

CORNER FALLS IN CENTER OF OLD HIGHWAY GRADE

6/6/84 J. A. Cannon

34
SOUTH 1/16 BET. SEC'S, 20-21

NOTES BY JOHN J. ROSE 1927

FOLDER #17 PAGE 91

SET BALSAM POST FOR 1/16 CORNER

MARKED PINE STUMP FOR BT

W, PINE STUMP 30" N 51° 46' W 31.3'

10/21/82 CK-JA-GB

CHAINED SOUTH OF ORIG. MC ON SOUTH SHORE OF
ISLAND LAKE - 257.7' TO SEARCH AREA - DAY BEFORE
HAD CHAINED UP FROM SECTION CORNER TO SECTIONS
20-21-28-29 A DISTANCE OF 1340.6' INTO AREA
BOTH DISTANCES FELL WITHIN 2' ALSO CHAINED OVER
FROM CS 1/16 SEC. 20 2605'

SEARCH IN AREA AND FOUND LARGE PINE STUMP WELL
ROTTED NW OF OUR CHAINING - FROM PINE STUMP WE
WENT S 58 E 31.3' AND SCRAPPED GROUND AND FOUND
ROTTED POST HOLE WITH WOOD FIBER - BURNED AT BEARING
AND DISTANCE FROM PINE STUMP

PLACE 50^d SPIKE IN HOLE OF PINE STUMP AND PLACED

1/2" X 6" ROD AT CORNER LOCATION 2" DEEP

SET 3" X 3" X 48" ASH POST BESIDE 1/2 ROD

AND MARKED TEMP TIES

BIRCH	12	S 16 W	13.3'	FSLP
BIRCH	8	N 8 W	17.9'	NAIL + TAG
BALSAM	8	N 83 E	5.8'	" "

34
CORNER IS 180' SOUTH OF ISLAND LAKE RD NE-SW

QUARTER CORNER BET. SEC'S. 16+21
 NOTES OF ORIG. GOVT. SURVEY 1896
 SET WOOD POST

BIRCH 30 N11E 17 LKS.

BALSAM 9 S80E 11 LKS.

NOTES BY JOHN J. ROSE 9/28/32 F16 Pg 15

SET 1/2 IRON BOLT WITH 1"X1"X18" ANCHOR

MKD NEW BT'S.

BLK ASH 9 N9W 50.9'

BLK. ASH 9 N30°30'E 71.3'

CORNER WAS SET AT PROPORTIONAL DISTANCE BET.

SEC. COR. TO SEC'S 15-16-21-22 AND MC BET. 16+21
 FROM SEC. COR. WEST 2646.6' AND 1535.1' FROM MC

ON E. SHORE OF ISIANA LAKE

7/8/81 CK-GB

CHAINED FROM SEC. COR. WEST 2646' THEN CHAINED
 FROM ORIG. MC EAST 1535' DISTANCES FALL IN
 SAME AREA IN E+W ROAD - NO EVIDENCE OF IRON BOLT
 OR BT'S. WAS FOUND AT THIS TIME

EAST $\frac{1}{16}$ BET. SEC'S, 16 & 21

NOTES BY JOHN J. ROSE 7/19/32

FOLDER 16 PAGE 15

SET E $\frac{1}{16}$ 1323.32' WEST OF SEC. COR.
AND MARKED NEW BT'S.

ASPEN 6 N45E 56.1'

NOW 14" ASPEN N53E 56.1' SCRIBE CLOSED

ASH 7 N14W 85.7'

NOW 11" ASH N7W -85.7' RESCRIBED E $\frac{1}{16}$ S16 BT

7/9/81 CK-6B

CHAINED WEST FROM SEC. COR. ROSE'S, DISTANCE
OF 1323.3 AND FELL 0.7' SHORT OF TIES BY ROSE
FROM ABOVE BT'S.

SET 2" X 24" IRON PIPE WITH BRASS CAP MARKED
IRON WAS SET 16" BELOW ROAD T15DN R28W

E $\frac{1}{16}$ $\frac{S16}{S21}$
1981

RIS NO

WITNESSED BY

ASH 4 N60E 84.74' MKD X BT
BALMIE 6 S10W 46.24' E $\frac{1}{16}$ S21 BT
TEL. POLE N36W 48.84' BT TAG & MAIL
PLACE F.S. SIGN 54-9 ON TEL. POLE

CORNER FALLS IN THE EAST LANE IN THE NORTH
DRIVING RUT
PRIVATE ROAD RUNS NORTH TO HOME
OLD FENCE LINE GOING SOUTH

38
SECTION CORNER TO SEC'S. 15, 16, 21 & 22
NOTES OF ORIG. GOV'T. SURVEY 1896
SET WOOD POST

TAM. 8 N8E 13 LKS.
TAM. 8 S79E 11 LKS.
TAM. 8 S50W 25 LKS.
TAM. 8 N58W 24 LKS.

NOTES AND PLAT BY L.W. JOHNSON - COUNTY SURVEYOR
1937 SUBDIVISION OF SECTION 15
Fd. GOV'T. CORNER

SET IRON PIPE Fd. $\frac{3}{4}$ " X $\frac{1}{2}$ " IRON PIPE - 3" BELOW ROAD
BENT TO NE
MARKED NEW BTS.
SPRUCE 5 N20E 60.05'
AT N22E - 57.8' VISIBLE
Fd. SPRUCE STUMP WITH BASE BLAZE AND SCRIBE BT
SPRUCE 6 N13W 46.20'
AT N15W - 46.6' SCRIBE VISIBLE
Fd. SPRUCE STUMP WITH BASE BLAZE AND PART OF T
SPRUCE 4 S15W 44.90'
AT S20W - 44-8
Fd. SPRUCE STUMP BADLY ROTTED - NO SCRIBE REMAINS
TAM. STD. 7 S6E 41.00

NO EVIDENCE REMAINS OF TAM STUMP AT BRG + DISTANCE
7-8-81 CK-6B

7-8-81 CK-6B
SET 2" X 24" IRON PIPE WITH BRASS CAP MKD.
RESET COUNTY IRON AT
NORTH SIDE OF NEW MONU.
12" BELOW ROAD SURFACE
IN SPRUCE SWAMP FILL
TISON R28W
S16 S15
S21 S22
1981
RLS NO.

WITNESS BY
TAM. 9 S50E - 66.08 MKD TISON R28W S22 BT
TAM. 9 N28E - 48.13 MKD TISON R28W S15 BT
TAM. 4 S34W - 55.62 MKD S21 BT
ASH 5 N43W - 103.58 MKD S16 BT
54-9 ON BALSAM 8 DUE SOUTH 43.65'
CORNER IN CENTER OF E4W COUNTY ROAD #31
150' EAST OF CORNER LD. SWAMP TO ASPEN RIDGE

NOTES BY JOHN ROSE 7/31/32 - FOLDER 16 Pg. 13
SET 1" GAL. IRON PIPE IN R OF E4W ROAD
MKD NEW BTS.
SPRUCE 6 N21°20'W - 47.0'
SPRUCE 5 N16°19'E - 58.6'
SPRUCE 7 S7E - 40.1'
SPRUCE 5 S16°35'W - 46.0'

38
QUARTER CORNER BET, SEC'S, 15+22
NOTES OF ORIG. GOVT. SURVEY 1896
SET WOOD POST

J. PINE 24 N69E 15 LKS.

FALLS IN ROAD

SPRUCE 9 N30W 18 LKS.

FALLS IN ROAD

NOTES BY ITASCA COUNTY 1937 L. W. JOHNSON

SUBDIVISION OF SECTION 15

SET IRON MONUMENT

NO IRON FOUND - PROBABLY GRADED OUT BY ROAD

ASPEN 7 S20E 156.20

Fd. 16" ASPEN BT SIZE 156.2' CUT INTO AND Fd. SCRIBE $\frac{1}{4}$ " 522 BT

ASPEN 10 S64E 157.30'

Fd. ROTTED ASPEN STUMP AT S57E - 157.3'

SET SPIKE AT TRUE CORNER FROM COUNTY BT'S.

ALSO CHAINED FROM SEC. COR. TO WEST 2689.3'

WHICH CHECKED GOOD WITH COUNTY DISTANCE

7/15/81 CK-6B

CERTIFICATE FILED

38

7-30-81 CK-6B

IN PLACE OF SPIKE - SET 2" X 24" IRON PIPE
WITH BRASS CAP MARKED

CAP IS 12" BELOW ROAD
IN CENTER OF COUNTY ROAD
E+W

T150NR28W

$\frac{1}{4}$ $\frac{515}{522}$

1981

RLS NO

WITNESSED BY

ASPEN 7 N41E - 145.35' MKD. $\frac{1}{4}$ " 515 BT

ASPEN 7 S46E - 118.60' " $\frac{1}{4}$ " 522 BT

ASPEN 3 SIDE - 98.00' " $\frac{1}{4}$ " 522 BT

4" X 4" CEDAR POST DUE SOUTH 33.0'

EAST 1/4 BET. SEC'S, 15422

NOTES BY ITASCA COUNTY 1937-L.W. JOHNSON

SUBDIVISION OF SECTION 15

SET IRON MONUMENT

NO IRON AT CORNER - PROBABLY TAKEN OUT BY GRADER

ASPEN 7

~~S27W~~ ~~64.10~~
S27W 64.10

VISIBLE

Fd. 17" ASPEN STUMP AT S32W 64.10' SCRIBED BT

SPRUCE 10

~~S15W~~ 123.25'

S15 BT

Fd. 24" SPRUCE STUB AT NS0W - 123.25' SCRIBED

SET SPIKE AT COUNTY DISTANCES 6" BELOW ROAD

CORNER IS IN CENTER OF E+W ROAD AND TANGENT

NORTH

TEMP TIES TO SPIKE

FENCE POST 6" S9W 30.88'

POWER POLE 9" N46W 53.56'

FENCE POST 6" S79E 68.35'

WILL MONUMENT LATER

7/15/81 CK-6B

CHAINED 1339' FROM 1/4 CORNER, WHICH CHECKED

WITH COUNTY DISTANCE

7/27/81 CK-6B

IN PLACE OF SPIKE SET 2" X 24" IRON PIPE
WITH BRASS CAP MKD.

CAP IS 12" BELOW ROAD

TISON R 28W

INTERSECTION

E 1/4 $\frac{S15}{S22}$

1981

RLS NO

WITNESSED BY

ASH 7 N48E - 142.47' MKD E 1/4 S15 BT

ASPEN 10 S13W - 65.82' " E 1/4 S22 BT

ASH 6 N32W - 120.60' " E 1/4 S15 BT

POWER POLE 9" N46W - 53.56' TAG + NAIL

4x4 CEDAR POST DUE SOUTH 12.4'

8/16/93 RM + CK

MONUMENT IN PLACE

ASH NW GONE

ASPEN SW + ASH NE + 4x4 CEDAR POST OK

SECTION CORNER TO SECTIONS 14, 15, 22 & 23

NOTES OF ORIG. CO. SURVEY 1896

SET WOOD POST

BIRCH 7 N9E 34 LKS. = 22.44'

ASPEN 6 S19E 17 1/2 LKS. = 11.55'

ASPEN 7 S65 1/2 W 33 1/2 LKS. = 22.11'

TAM. 10 N55W 28 LKS. = 18.48'

NOTES BY ITASCA COUNTY 1937 L.W. JOHNSON

SUBDIVISION OF SECTION 15

SET IRON MONUMENT

ASPEN 8 N25W 34.40'

NO TRACE UNDER POWER LINE CLEARING

ASH 7 N67E 95.80'

NO TRACE UNDER POWER LINE

W. BIRCH 8 S22E 63.85'

NOW 14" BIRCH AT S14E - 63.85' SCRIBED S23 BT

CC DONE

CERTIFICATE FILED 40

7-15-81 CK-GB-MK

FOUND 1 1/2" X 18" IRON PIPE MARKING SECTION COR.
 PIPE WAS BENT - BUT IN PLACE + FD. 14" BIRCH AT
 S14E 63.85' WITH SCRIBE S23 BT VISIBLE
 ALSO PLUMB CHAINED FROM 1/4 CORNER TO WEST
 COR CHAINED DISTANCE WAS 2678.0' WHICH CHECKED
 GOOD TO COUNTY DISTANCE
 CORNER IS IN CENTER OF COUNTY ROAD E+W

SET 2" X 24" IRON PIPE WITH BRASS CAP, MARKED
 CAP IS 12" BELOW ROAD

TISON R 28W

S15 | S14

S22 | S23

1981

RLS NO

WITNESSED BY

ASPEN 8 S22E - 46.39' MKD TISON R 28W S23 BT

ASH 10 N56W - 120.45' " TISON R 28W S15 BT

ASPEN 11 N40E - 64.70' TISON R 28W S14 BT

8" STEEL SIGN POST S17W - 31.40' S4-9 ATTACHED

POWER POLE 9" N35E - 27.0' NAIL + TAG

4" X 4" CEDAR POST DUE NORTH 29.3' S4-2 + S4-9

OPEN HAY FIELD TO SW

CERTIFICATE BY GARY STEVENSON 6/16/83
 DOCUMENT # 358200

8/19/92 CK

ASPEN S22E IS BROKEN OFF 30' STUB
 OTHER BT'S OK & SIGN POST
 WINDSTORM ON 8/19/92 WENT IN EAST-SE DIRECTION
 FROM ISLAND LAKE, ACROSS FOREST AND DID VERY MUCH
 DESTRUCTION IN ITS PATH TO CORNERS & BT'S.

QUARTER CORNER BET. SEC'S, 14 & 15

NOTES OF ORIG. GOV'T. SURVEY 1896

SET WOOD POST

ASPEN 10 S60W 4 LKS.

ASPEN 7 N89E 13 LKS.

NOTES BY ITASCA COUNTY 1937 - L.W. JOHNSON

SUBDIVISION OF SEC. 15

SET IRON MONUMENT

ASPEN 6 S28E 11.80'

BALSAM 14 S26W 35.3'

NOTES BY JOHN ROSE 1941

FOLDER 7 Pg. 126

FOUND COUNTY IRON PIPE

FOUND EVIDENCE OF ORIG. ASPEN 16" STUB

S60W 2.6'

FOUND BOTH COUNTY BT'S.

7/16/81 CK-6B-TB
 FOUND 3/4" IRON PIPE - IN PLACE - 8" ABOVE GROUND
 FD. LARGE ASPEN STUMP - ROTTED - WITH NEGATIVE
 SCRIBE BT AT BASE OF STUMP - AT S22E - 12.0'
 FD. EVIDENCE OF LARGE ASPEN STUMP (ORIG. BT)
 AT S60W 2.6' - NOW WELL ROTTED
 FD. VERY LARGE BALSAM STUMP WELL ROTTED - UNDER
 OTHER BALSAM WINDFALLS - WITH NEGATIVE SCRIBE
 T VISIBLE AT S34W - 35.3'
 PLACE FSLP ON ASPEN 11 N67E 9.0' FROM IRON
 ALSO SET ASH POST ALONGSIDE IRON PIPE
 OLD DOWN FENCE LINE. E & W YS 3.5' NORTH OF IRON
 CORNER IS ON SIDE HILL IN ASPEN - ASH - BIRCH & BRUSH
 LOWLAND SWAMP IS 75' NORTH OF CORNER
 OUR LAND TO SE HAS RECENTLY BEEN CUTOVER AND NOW
 IS ASPEN REGENERATION
 SHOULD MONUMENT CORNER SOON

9-16-81 CK-6B

IN PLACE OF COUNTY IRON SET 2" DIA. X 5' LONG
 IRON PIPE WITH BRASS CAP MARKED

RESET COUNTY IRON
 AT NORTH SIDE OF
 NEW MONUMENT

TISON R28W

1/4

S15 | S14

1981

RLS NO.

WITNESS BY

ASH 4 N75W - 15.03' MKD X BT

ASH 8 N62W - 57.70' " 1/4 S15 BT

ASH 14 N15E - 57.12' " 1/4 S14 BT

ASH 6 N83E - 32.70' " 1/4 S14 BT

8' STEEL SIGN POST DUE EAST 3.8'

8' STEEL SIGN POST DUE SOUTH 2.9'

WITNESS CORNER TO SECTION CORNER, 10, 11, 14, 15

NOTES OF ORIG. CO. SURVEY 1896

SET WOOD POST

ASPEN 4 NASW 17 LKS.

ITASCA COUNTY 1937 Fd. EVIDENCE OF BT

ASPEN 6 N35E 32 LKS.

ITASCA COUNTY 1937 Fd. EVIDENCE OF BT

NOTES BY ITASCA COUNTY - L.W. JOHNSON
1937 - PLAT OF SECTION 15

SET IRON MONUMENT

Fd. IRON - IN PLACE - FROZEN IN ICE

ASH 8 N80W 45.6'

ASH 15 N73W - 45.6' SCAR

ASH 10 N41E 110.20'

BASSWOOD (NOT ASH) N48E - 110.20' SCAR

377.5' NORTH OF SECTION CORNER - IN LAKE

NOTES BY JOHN J. ROSE - RLS - 12-22-40
FOLDER 7 PAGE 116

HIS RANDOM LINE FELL 2.1' EAST OF
SCRIBED POST AND IRON PIPE AT WITNESS
CORNER - HIS DISTANCE NORTH OF SECTION
CORNER WAS 396.7'

2-27-81 CK-TB-GB
Fd. IRON PIPE - IN PLACE - FROZEN IN ICE
Fd. BOTH COUNTY BT'S. ALIVE
Fd. TAM POST 4" X 4" 48" SCRIBED BESIDE IRON
POST BROKE OF AT ICE - NOW 2 PIECES
BT'S FOUND AS FOLLOWS

ASH 15 N73W - 45.6' - SCAR FACING IRON

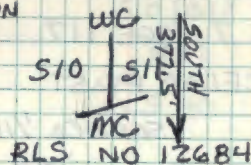
BASSWOOD 16 N48E - 110.20' SCAR FACING IRON

OLD DOWN FENCE RUNS NORTH TO S 1/16 - WIRE IS
5' WEST OF CORNER - LAKE LEVEL CONTROLLED
BY BEAVER

7-24-81 CK-GB

IN PLACE OF 1" IRON PIG - SET 2" X 5' LONG
IRON PIPE WITH BRASS CAP MARKED

6' STEEL SIGN POST T150 N R 28 W
NORTH SIDE WITH COUNTY IRON
& TAM POST ALL WIRED
TOGETHER WITH 2" IRON



WITNESSED BY

ELM 4" N3W - 43.00' MKD X BT

REMARKED COUNTY BT'S.

ASH 15 N73W 45.6' MKD BT

BASSWOOD 16 N48E 110.20' MKD BT

8' STEEL SIGN POST EAST 210'

DOCUMENT # 358199

SOUTH 1/16 CORNER BET. SEC'S. 10 & 11

NOTES BY JOHN J. ROSE 1940

FOLDER # 7 Pg. 117

SET SCRIBED CEDAR POST

MARKED NEW BT'S.

BASSWOOD 10 N49E 18.3'

BALSAM 5 S52W 14.3'

NOTES BY JOHN J. ROSE RLS. 12-22-40

FOLDER 7 PAGE 117

SET CEDAR POST Fd, 3"x3"x24"

SCRIBED 1/16

BASSWOOD 10 N49E 18.3'

NOW 14" BASSWOOD AT N57E - 18.3' SCAR

BALSAM 5 S52°30'W 14.3'

NOW ROTTED BALSAM STUMP AT S60W - 14.3' ^{NAGITIVE SCRIBE UPPER + LOWER} E220'S

ROSE SHOWS DISTANCE NORTH OF WITNESS CORNER OF 970.1' AND DISTANCE NORTH TO 1/4 CORNER BET. SEC'S. 10 & 11 OF 1366.8'

2-27-81 CK-GB-TB
Fd. CEDAR POST ON GROUND (TOP) - BASE POINT IN PLACE - TOP MARKED 1/16
POST WAS 3" X 3" X 24" LONG
Fd. ROTTED BALSAM STUMP WITH NAGITIVE SCRIBE AND NAGITIVE SCRIBE AT BT BLAZE AT S60W 14.3' FROM CEDAR POST POINT
Fd. BASSWOOD 14" AT N57E - 18.3' WITH SCAR FACING CORNER - PUT FSLP ON BASSWOOD & BT TAG OLD MOSTLY DOWN FENCE LINE RUNS NORTH FROM WITNESS CORNER - FENCE STANDING FROM S'1/16 400-600 SOUTH OF S'1/16 (MOSTLY JUST POSTS) BEARING OF LINE WAS N10°E AND OUR DISTANCE CHAINED WAS 1367' FSLP ON MAPLE 8 N77E - 12.8'

7-24-81
IN PLACE OF CEDAR POST POINT - SET 2" X 5" LONG IRON PIPE WITH BRASS CAP MARKED

T150NR28W
S'1/16
S10|S11
1981

RLS NO

WITNESSED BY

- MAPLE 5 N18E - 46.25' mka X BT
- ELM 16 S85E - 81.00' " S'1/16 S11 BT
- MAPLE 5 S25W - 15.94' " X BT
- MAPLE 11 S60W - 30.15' " S'1/16 S10 BT
- 8" STEEL SIGN POSTS EAST 2.7' + NORTH 3.2'

44
QUARTER CORNER BET. SEC'S, 10411

NOTES OF ORIG. GOV'T. SURVEY 1896

SET WOOD POST

ASPEN 8 N14W 14 LKS.

NO TRACE OF BT COULD BE FOUND (1981)

BALSAM 9 N50E 13 LKS.

NO TRACE OF BT COULD BE FOUND (1981)

NOTES BY JOHN J. ROSE 12-24-40

FOLDER 7 PAGES 117 + 118

RANDOM LINE NORTH FROM WITNESS CORNER

NORTH SHORE WILLIAMS LAKE TO 1/4 COR.

STATION 27+23.5' TURN ANGLE 84°11" RT

21.5' TO 1/4 CORNER BET. SEC'S, 10411

ROSE'S DISTANCES AS FOLLOWS

SEC. COR. TO WITNESS COR. 396.7'

WITNESS COR. TO S'1/16 970.1'

S'1/16 TO 1/4 COR. 1366.8'

PAGE 118

RANDOM LINE WEST TO N+ S 1/4 LINE

2746.9' - SET SMC AT LAKE SHORE

AT STATION 17+65' AND SET CE'1/16

AT STATION 1331.7'

2-25-81

~~7-20-81~~ CK GB TB

CHAINED N16 FROM S'1/16 BET. SEC'S, 10411
1367' Fd. 4" X 4" X 5' CEDAR POST - SCRIBED
1/4 S11 ON FACE OF POST - PART OF POST
LYING ON GROUND SCRIBE HAS ROTTED AWAY
TOP 30" OF POST WAS LYING ON GROUND
Fd ANOTHER POST LYING ALONG SIDE OF
SCRIBED POST - THIS POST HAD A 40° SPIKE
IN TOP - THIS POST WAS 3" X 3" X 24"
PUT FSLP ON ASPEN 12 S25E + 15.2' FROM
ASH POST SET IN ROSE'S CORNER LOCATION

7-20-81 CK-GB

IN PLACE OF ROSE'S CEDAR POST - SET 2" X 5'

LONG IRON PIPE WITH BRASS CAP MARKED

CEDAR POSTS SET ALONGSIDE TISON R2BW
IRON PIPE ON EAST SIDE

1/4

S10 | S11

1981

WITNESSED BY

RLS NO. 12684

ASH 3 N60E - 9.35' MKD BT

ASPEN 7 N72E - 18.90' " 1/4 S11 BT.

ASPEN 12 S26E 16.62' " 1/4 S11 BT

ASPEN 9 S41W 72.34' " 1/4 S10 BT

B' STEEL SIGN POST NORTH 3.9' + SOUTH 4.1'

DOCUMENT # 358198

ON 2-26-81 CK-TB-BT

CHAINED WEST FROM 1/4 LOCATION AND FOUND
BOTH OF ROSE'S POSTS FOR CE'1/16 AND SMC
ON ISLAND LAKE

SMC WAS MONUMENTED ON 7-28-81 CK

CERTIFICATE FILED

TONY BENDER
SARA BRAMA

44

#54 STEVE NEON
6/16/83

45
QUARTER CORNER BET. SEC'S. 15+16
NOTES OF ORIG. GOV'T SURVEY 1896
SET WOOD POST

ASH 7 S18E 7 LKS. 4.62'
Fd. 7/28/81 FAINT NEGATIVE SCRIBE ON STUMP
ASH 7 S60W 4 LKS. 2.64'
NO TRACE AT THIS TIME

NOTES BY JOHN J. ROSE 1-20-41
FOLDER 7 PAGE 127
ROSE FOUND 1" IRON PIPE AND 1 BT TO SEC. 15

FOLDER 17 PAGE 125 7-31-32
FOUND BOTH GOV'T BT'S.
SET 1" IRON PIPE FOR PERMANENT CORNER.
DISTANCE NORTH OF $\frac{3}{4}$ SEC. COR. 2648.3'
MEANDER CORNER IS 147.1' NORTH OF $\frac{1}{4}$ COR.

FOLDER 16 PAGE 14 7-32
RAN LINE NORTH FROM SEC. COR. BET. SEC'S.
15+16 - 2649.5' TO $\frac{1}{4}$ COR.
Fd. BOTH GOV'T BT'S.
SET 1" IRON PIPE

CERTIFICATE FILED

45

7-28-81 CK-GB-TB
CHAINED NORTH FROM SEC. COR - ROSE'S
DISTANCE 2649 - Fd. 1" X 36" IRON PIPE
IN PLACE - Fd. SCRIBED POST (STANDING)
ALONG SIDE IRON PIPE
Fd. ORIG. ASH STUMP ROTTED S18E + 4.62'
NO TRACE OF OTHER ORIG. ASH FOUND AT THIS TIME
CORNER FALLS ON SE EDGE OF MARSH GRASS

7-28-81
IN PLACE OF 1" X 36" IRON PIPE
SET 2" X 5' LONG IRON PIPE WITH BRASS CAP MKD.

1" X 36" IRON PIPE AND
WOOD POST PLACED
ON NORTH SIDE OF 2" IRON

TISON R 28 W

$\frac{1}{4}$

S16 | S15

1981

RLS NO

WITNESSED BY
CEDAR 21" S85W - 77.33' MKD $\frac{1}{4}$ S16 BT
ASH 10" N85E - 65.60' " $\frac{1}{4}$ S15 BT
CEDAR 13" N31W - 56.82' " $\frac{1}{4}$ S16 BT
8' STEEL SIGN POSTS SOUTH 3.45' + ^{EAST} ~~NORTH~~ 2.95'

DOCUMENT # 358203

7-28-81 CK-GB-TB
Fd. MC CORNER 141' NORTH OF $\frac{1}{4}$ COR.
IRON BAR + SCRIBED CEDAR POST
Fd. ROTTED WILLOW STP N10E 11.30'

TIES TO IRON BAR

W. PINE 23 N85E - 14.90 NAIL + TAG
CEDAR 13 SOUTH 3.50 " "
8' STEEL SIGN POST WEST 3.65'

CENTER EAST SIXTEENTH SECTION 29

4/23/84 CK JA GB SET SIXTEENTH FROM TRAVERSE
 marked
 SET: BRASS CAPPED IRON PIPE 2' TISON R28W
 down 4" below road. E 1/4

MARKED PTS:

TAM. 14" N46W 85.98'

TAM. 14" S82W 52.90'

Steel sign post 8' WEST 33.0'

CORNER FALLS IN CENTER OF A FOREST SERVICE
 ROAD NORTH-SOUTH. FENCE LINE WEST FALLING
 SOUTH OF CORNER APPROX 10'. LINE TO STANDARD
 RUNS WEST FROM CORNER

6/6/84 J. Alliston

QUARTER CORNER BET. SEC'S. 21 & 28

NOTES OF ORIGINAL GOV'T. SURVEY 1896

SET TAM POST

TAM. 10 N45E 13 LKS. 8.6'

TAM. 7 S42E 21 LKS. 13.9'

ORIG. MILE 80.16 CHS. - 1/4 AT 40.08 CHS.

9/18/84 CK-GB-JA

Chained & ran line east from sec. cor. 20, 21, 28, 29 2646'

At 1800' offset 50' south. Swampy. Would look better if

we had offset another 50'. Fd. 10" Birch blazed on 4 sides

approx. 50' south of our line and at 2615' east. Search

3 hrs and found no evidence. Note: Fd. 2" mountain ash near birch.

10/30/84 Same crew

Set ash post 4" x 7" ash post at 2646' E. Placed a F.S.L.P.

on 10" Cedar N17E 26.0' from approx. cor. Ran line

east from here and we feel the 1/4 cor. should

fall approx. 50' to 75' south of approx. posit. on.

(Note: 4 sided Birch has blown down. M. Ash OK.) Line

should be run at S88E

SECTION CORNER TO SECTIONS 21-22-27-28

NOTES OF ORIGINAL GOV'T. SURVEY 1896

SET BIRCH POST

SPRUCE 8 N89 $\frac{1}{2}$ W 33 LKS. 21.8'SPRUCE 10 N65W 42 $\frac{1}{2}$ LKS. 28.0'BIRCH 8 S2 $\frac{1}{2}$ W 23 LKS. 15.2'

BALSAM 8 S54E 18 LKS. 11.9'

10/30/84 CK-JA-GC

Chained and ran line east from approx. V.C. 2645'. At sta. 1620' offset 200' south because of beaver pond. Found a 2" spruce stub blazed on 4 sides 45' north of line. Corner would fall at sta. 2710 if spruce is original M&B.T.

10/31/84 Same crew

Cut down spruce stub but found no scribe. Set approx. sec. cor. at Gov't distance from west 5292' and Gov't tie to the north of 120' enter swamp. Placed a F.S.L.P. on 7" Aspen S30W 20.3' from our 2" x 2" x 6" cherry post for approx. cor. position. Blazed a 12" Balsam on east side 6.5' from post. Our compass line is approx. 35' south of this position with a 200' \odot south along line. Believe line runs S88E.

QUARTER BETWEEN SECTIONS 21+22
 NOTES OF ORIGINAL GOVT. SURVEY 1896
 SET TAM. POST

TAM. 6 S2W 28 LKS. 18.5'

BALSAM 4 N34E 11 LKS. 7.3'

South bet 21+22

594 Leave tan swp.

858 Descend from highland
 (Enter swamp E+W)

1254 Leave swamp
 & enter highland
 SE NW

2620.2 Descend enter swamp
 E+W

2640. 1/4 Cor.

8/9/84 JA 6B

Chained south from Sec. cor. 15, 16, 21, 22, 770'. Hit a Beaver pond. Set a ash picket at 770. Blazed balsam to the west

9-19-84 OK JA 6B

START AT ABOVE PICKET @ 300' W THEN TO 1400'S
 @ 300' E TO TRUE LINE AND CONT. SOUTH
 TO STA. 2640'S. SEARCH 3M². NO EVIDENCE
 FOUND - SHOULD CHAIN UP FROM SEC. COR. TO S
 BUT WE DON'T BELIEVE ANY EVIDENCE ABOVE
 GROUND REMAINS - BLAZED 8" BALSAM AT APPROX.
 SEARCH AREA - AT BASE OF RIDGE E+W TO 111'
 NORTH OF COR. SEARCH AREA - OLD WOODS TRAIL
 FROM N IS 500' E OF COR.

AREA HAS BEEN HEAVILY BURNED YEARS AGO
 FOR 200'S AND E+W ALONG RIDGE

South from 1/4 Cor bet 21/22

1135.2 Leave swamp
 N60W 560E

1452 Descend - enter swamp
 E+W

1782 Ascend over dry land
 E+W

1963.5 Enter swamp (E+W)

2521.2 Leave swamp N80W 580E

QUARTER CORNER BETWEEN SEC'S. 27+28

NOTES OF ORIGINAL GOVT. SURVEY 1896

SET SPRUCE POST

BALSAM 9 N86W 32 LKS. 21.1'

BIRCH 9 S87W 60 LKS. 39.6'

8/10/84 - GB-JA

Chained north from Sec. corner 2728, 33, 34, 11
At 2170' placed picket with ribbon at south
edge of beaver pond. Need to finish line. m.w. etc.
10/31/84 - CK-GB-JA
Fd a Balsam stub 10" 11" dia. with a old F.S.L.P. on
south side. Believe 1/4 C. falls near here. Search
woods trail runs NE-SW 50' west of tag. Tag falls
in aspen reproduction.

QUARTER CORNER BETWEEN SEC'S. 22 & 27

NOTES OF ORIGINAL GOVT. SURVEY 1896

SET TAM. POST

TAM. 6 S27½E 9½ LKS. 6.3'

TAM. 11 N71W 14 LKS. 9.2'

NOTES BY JOHN J. ROSE RLS 1927

FD. OLD POST - SET NEW SPRUCE POST
IN PLACE OF OLD ONE

FOLDER IS PAGE 11

ROSE'S DISTANCE FROM EAST SEC. COR.

2638.8'

SET E 116 2.3' N OF RANDOM LINE AT 1319.7

SET TAM POST 5"

MKD BT'S.

TAM 5 N30E 7.3'

SPR. 5 S42W 11.0'

11-29-84 JR-GR-OK

CHAINED WEST FROM APPOX. SEC. COR. 1319' AS PER
ROSE'S NOTES - NO EVIDENCE FOUND OF POST OR BT'S.
SEARCH TIME 1HR. - SET 3" TAM POST 5" HIGH - 7' LONG
AS APPOX. E 116 - TAM POST IS 50' N OF STA. 1319' W
AND 75' NORTH OF ASPEN RIDGE - LINE SHOULD BE
RUN AT N 88W FROM SEC. COR.

PUT FSLP ON 7" BLK. SPR. W. SIDE COR POST IS 1' N

CONTINUE LINE AT N 88W TO ¼ COR.

ROSE'S CALL AT LN. SWP. 235' - OUR CHAIN 260'

" " " ENT. SWP. 671 - " " 685'

CHAINED 1319 AND MARKED AND ALDER RIBBON
AS APPOX. ¼ COR. - OUT OF TIME THIS DAY - WE WILL
CHAIN INTO THIS ¼ COR. FROM WEST AS WE HAD LINE
RUN EARLIER THIS MONTH AND RAN INTO A BEAVER POND
TO WEST OF CORNER.

10-31-84 SAME CREW

CHAINED 2075'E BLKED 7" BALSAM 5" W AND MKD

2075'E WITH RIBBON AT EDGE OF BEAVER POND

APPEARS ¼ COR. IS IN POND & DEAD TREES AROUND

12-6-84 OK JA 68

CHAIN FROM ABOVE LOCATION OVER ICE ON POND
TO 2640'E - SEARCH AND FOUND SCRIBED POST
FROZEN IN SWP. - FOUND EVIDENCE OF BOTH ORIG.
TAM. STUMPS AT BKG. & DISTANCESET 4" SQ. 8' LONG TAM POST BESIDE OLD POST
AND MKD TEMP TIES

BLK. SPRUCE 4 S55E 19.8' SPIKE & TAG

TAM. 5 S8W 38.0' " "

BLK. SPRUCE 6 N19W 15.6' " "

FSLP ON 8" BIRCH S39W 8.0' SPIKE

FROM 2640'E + 60' TO LINE FROM WEST 2640
LINES FELL 8' APART N 45,
POST WAS FOUND AT 2670'E AND SAME FOR
LINE TO EAST

SECTION CORNER TO SECTIONS 22, 23, 26, 27

NOTES OF ORIGINAL GOV'T. SURVEY 1896

SET BALSAM POST

- BALSAM 10 N5E 34 LKS. 22.4'
- Fd. 1927 BALSAM 15" STANDING N51E 22.0'
- BALSAM 6 S39E 28 LKS. 18.5'
- Fd. 1927 BALSAM 6" DOWN S63E 17.7'
- BALSAM 8 S65W 11 LKS. 9.3'
- Fd. 1927 BALSAM STUMP ROTTED S39W 6.5'
- BALSAM 6 N35W 4 LKS. 2.6'
- Fd. 1927 BALSAM STANDING 6" N35W 3.0'

NOTES BY JOHN J. ROSE RLS 1927

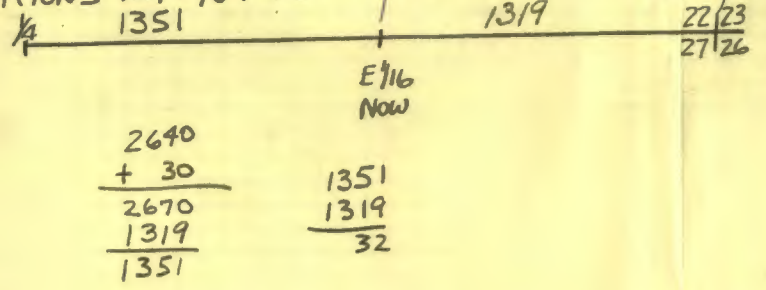
FOLDER #15 PAGE 11

FOUND OLD POST DOWN AND TWO BT'S.
 STANDING - Fd. POINT OF OLD POST
 SET NEW POST BALSAM 5"
 FOLDER #15 PAGE 11

WEST TO 1/4 CORNER.
 440' LN. HIGHLAND ENT. SWP. N4S.
 1320.7' 1/16 LINE RUN BY WILSON
 15.54' LN. SWP. NW
 1990' LN. HIGHLAND ENT. SWP. N-S
 2345' CENTER OLD LOGGING ROAD NE
 240.5' CENTER OF R.R. NE-SW
 2639' 9.6' SOUTH OF 1/4 COR.
 11-29-84 JA-GB-CK
 CONTINUE FROM APPROX. 1/4 BET. SEC'S. 22+23-52W
 LAND TIE NORTH OF SEC. COR. CHECKED OK 482'
 CHAINED 2640' + ESTABLISH APPROX. SEC. COR. AT
 END OF OUR CHAIN + SET 2" BIRCH STAKE 5" HIGH
 PUT FSLP ON 12" ASPEN NORTH 2.0' FROM STAKE
 AS APPROX. SEC. COR.
 CHECKED TIE TO EAST AT 200' - THIS LOOKED GOOD
 CHECKED TIE TO WEST 462' - ROSE'S DISTANCE 440'
 WE FELL AT 460'W - MAY HAVE TO MOVE 20' WEST
 WITH APPROX. SEC. COR. - WILL SEARCH AGAIN IN SPRING
 FROM 1/4 COR. WE FOLLOWED AN OLD WINTER ROAD - GROWN
 TO BRUSH FOR 1800' S OF 1/4 TRAIL THEN BR. SE

ROSE'S DISTANCE 2638.8'
 FROM EAST

IF WE GO BACK - WE
 NEED TO LOOK 32' W
 OF POSITIONS 12/6/84 CK



53 P-17
QUARTER CORNER BETWEEN SEC'S, 22 & 23

NOTES OF ORIGINAL GOVT. SURVEY 1896

SET SPRUCE POST

SPRUCE 8 S21E 23 LKS. 15.2'

SPRUCE 6 N80W 14 LKS. 9.2'

CC

53
11-29-84 JA-GB-CK
CHAINED 20.55' SOUTH TO APPROX. 14 COR. - LINE
SHOULD BE RUN AT S2W - AS WE @ 75' W AT S.C.
FOUND OLD BLAZED LINE TO WEST AND 3" STRAND
BARBED WIRE FENCE AND POSTS WEST - THEY APPEAR
TO END AT APPROX. POSITION WE USED FOR 14 COR.
CUT OFF 3" BALSAM AS APPROX. CORNER AND PLACE
ESCP ON 6" BIRCH NE 210' AS APPROX. COR.
ABOVE BIRCH IS BLAZED E+W+S - 6" SNOW COVER NOW
MORE SEARCH NEEDED IN SPRING
CONTINUE S2W TO SEC. COR.

54
QUARTER CORNER BETWEEN SEC'S, 26 & 27
NOTES OF ORIGINAL GOVT. SURVEY 1896
SET BALSAM POST

BIRCH 6 N17E 16 LKS. 10.6'

BALSAM 6 S37W 10 LKS. 6.6'

[Faint mirrored text from the reverse side of the page, appearing as bleed-through on the grid paper.]

SECTION CORNER TO SECTIONS 26, 27, 34 & 35

NOTES OF ORIGINAL GOV'T. SURVEY 1896

SET SPRUCE POST

BIRCH 10 N55E 3 LKS. 2.0'

BIRCH 10 S27E 59 LKS. 38.9'

SPRUCE 6 S10W 40 LKS. 26.4'

SPRUCE 12 N0 $\frac{1}{2}$ W 20 LKS. 13.2'

874 By L.W. JOHNSON 2-14-34

Fd. BIRCH 10" S29E 59 LKS. = 38.94' WITH SCRIBE

TISON R2BW S35 BT VISIBLE

PLACED FSLP ON BALSAM 4 S46E 54 LKS. = 35.64'

OLD ROAD 10 LKS NORTH OF COR. & OLD ROAD SOUTH ON
SEC. LINE

NOTES By JOHN J. ROSE 1924 FOLDER #1 Pgs. 25+26

STARTS SURVEY AT SEC. COR. 26-27-34+35

RAN SOUTH TO $\frac{1}{4}$ COR. 2644'RAN WEST TO $\frac{1}{4}$ COR. 2642'

11-16-83 CK-GB JA
 CHAINED FROM SEC. COR. 27, 28, 33+34 EAST ALONG
 FR. # 2229 - 2640' TAG ON POST NORTH SIDE OF E-W
 ROAD CONTINUE EAST TO 2400'E IN BEAVER POND
 SET PICKET WITH RIBBON MKD 2400'E
 WILL HAVE TO COME BACK WHEN POND IS FROZEN FOR
 SEARCH

5-14-87 CK-GB

RECHAIN DISTANCE FROM APPROX. $\frac{1}{4}$ 27+34
 AT 2362'E MKD 5" BIRCH WITH DISTANCE ON BLAZE
 CONTINUE WITH HIP BOOTS TO 2542'E SET STAKE AND
 MKD WITH CHAINED DISTANCE - WATER TO DEEP
 NOW GO SOUTH TO $\frac{1}{4}$ COR. F.S. IRON PIPE AND CHAIN
 NORTH TO 2345'N AND SET ASH STAKE IN OLD DAM
 MARKED DISTANCE ON ASH POST - THEN CONTINUE NORTH
 TO 2525'N AND SET STAKE - WATER TO DEEP
 USED HIP BOOTS - NEED WADERS OR DRAIN POND DOWN
 TO MAKE GOOD SEARCH
 WATER WAS DOWN ABOUT 24" NOW FROM MY VISIT IN 1983

2644'
 $\frac{1}{4}$
 34-35

QUARTER CORNER BETWEEN SEC'S. 26 & 35

NOTES OF ORIGINAL GOVT. SURVEY 1896

SET ASPEN POST

SPRUCE 10 S25E 7 LKS. 4.6'

ASPEN 9 N60W 8 LKS. 5.3'

874 CCC NOTES BY Lloyd JOHNSON 2/14/34

Fd. POST 4" x 4" x 36" SCRIBED

Fd. ASPEN 12 N77W 7 LKS. = 4.62' POSTER

PLACED ON THIS TREE

NOTE: POST ON HILL LOGGING ROAD 8 LKS

NORTH OF CORNER

SECTION CORNER TO SECTIONS 23, 24, 25 & 26

NOTES OF ORIGINAL GOV'T. SURVEY 1896

SET CEDAR POST

BALSAM 12 N89E 18 1/2 LKS. 12.3'

SPRUCE 10 S30E 13 LKS. 8.6'

BIRCH 12 S35W 16 LKS. 10.6'

SPRUCE 9 N20W 22 LKS. 14.5'

NOTES BY JOHN J. ROSE 1928

FOLDER 19 FIRST PAGE

Note. Cor. 23-24-25-26. Was destroyed
 When International Lumber Co. constructed Camp #142.
 I drove a Tom. Hub. into the ground where post stood
 but this may have been missed when Ry. was constructed.
 Look for Hub. about 30 ft. south west of southwest corner of
 barn near edge of cut. 1928. J.J.R.

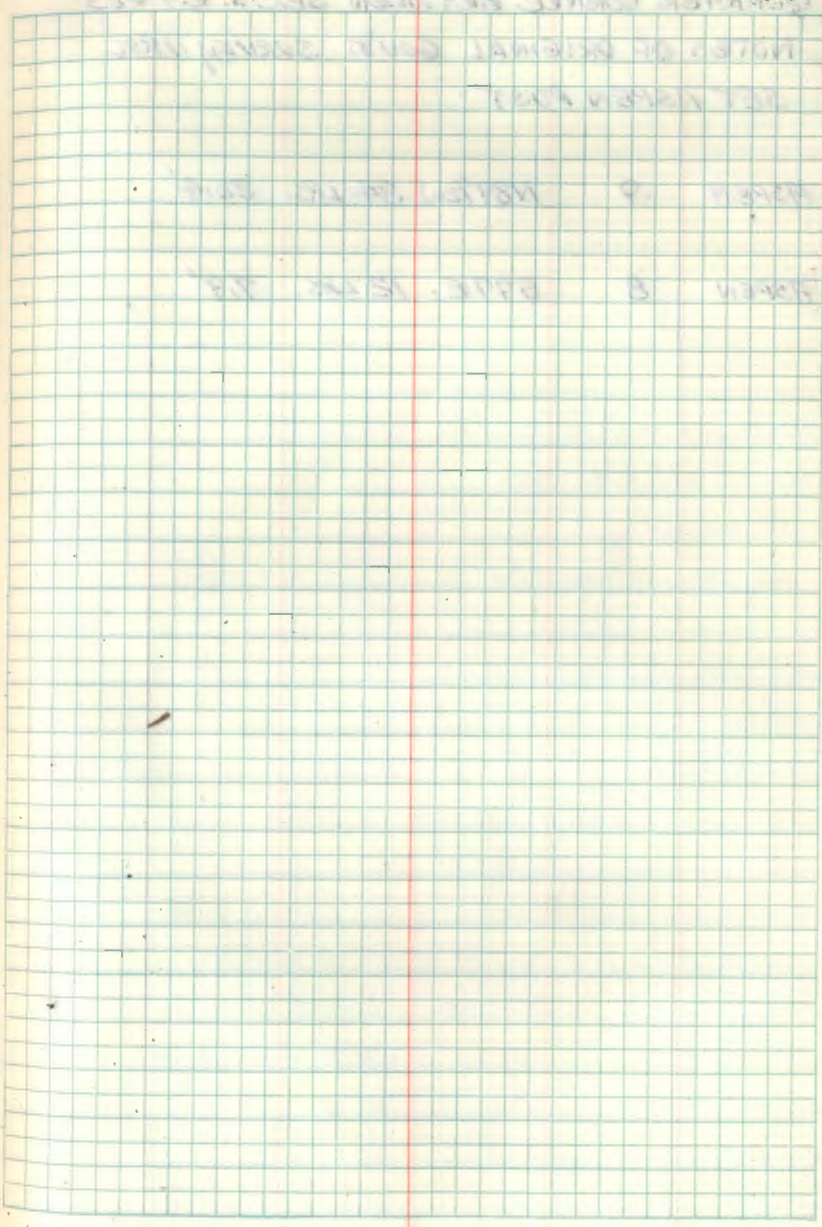
QUARTER CORNER BETWEEN SECTIONS 23 & 24

NOTES OF ORIGINAL GOV'T. SURVEY 1896

SET SPRUCE POST

TAM. 18 N68W 17 LKS. 111.2'

SPRUCE 6 N51E 19 LKS. 121.5'



QUARTER CORNER BETWEEN SEC'S, 24 & 25

NOTES OF ORIGINAL GOVT. SURVEY 1896

SET ASPEN POST

ASPEN 9 N89 $\frac{1}{2}$ W 34 LKS. 22.4'

ASPEN 8 S77E 12 LKS. 7.9'

61
MEANDER CORNER BETWEEN SEC'S. 20 & 21
NOTES OF ORIGINAL GOVT. SURVEY 1896
SET ASPEN POST

ASPEN 5 S25E 18 1/2 LKS. 12.3'

BIRCH 6 S32W 28 LKS. 18.5'

NOTES BY JOHN J. ROSE 4/13/27

FOLDER #17 PAGE 80

FD. CORNER

NO OTHER INFORMATION

10/20+21/82 CK-JA-6B

FOUND CEDAR POST - TWO PIECES - BASE OR POINT
IS 4" X 24" LONG - TOP IS 4" X 14" - IN PLACE - FROM
DISTANCE NORTH OF SEC. COR. BY ROSE - 1598.5' AND
ORIG. DISTANCE WAS 24.26 CHS. OR 1601.16'

FOUND ORIG. ASPEN STUMP WELL ROTTED S32W 18.5'

PLACED MAGNETIC PELLETS UNDER POINT OF POST

TEMP TIES - PLACE ROCK AROUND WOOD POST

BALMIE 12 S75E 28.8' NAIL + TAG

BALMIE 10 S31E 15.0' " "

BALMIE 7 S18W 25.1' " "

SPRUCE 17 S3E 46.1' FSLP

61
24.26 CHS. NORTH OF SEC. COR.

WEST RANGE LINE

QUARTER CORNER BET. SEC'S. 25 & 30

NOTES OF ORIG. GOV'T. SURVEY 1891

SET WOOD POST

BALSAM 5 N70E 4 LKS.

BALSAM 5 S35W 19 LKS.

1965 ITASCA COUNTY - REMONUMENTATION PROGRAM

SET 1 1/2" X 48" I.P. WITH ALUMI CAP - NO B.T'S RECORDED

1982 Wm. H. OKERMAN UNDER CONTRACT FOR LINE TO STD.

FL. 1 1/2" I.P. IN PLACE MARKING CORNER AND TWO B.T'S.

NOT RECORDED BY COUNTY AS FOLLOWS

DEAD ASH 7 N8W 25.94' SCRIBE VISIBLE

BALSAM STUB S 542E 12.25' SCRIBE VISIBLE

MARKED NEW B.T'S. 1982

FISH 6 N34W 9.30' BT TAG & SPIKE

BALSAM 7 N52E 22.64' " " "

8' SIGN POST 1.3' EAST OF COR. WITH 54-9

8' SIGN POST NORTH APPROX. 15' WITH 54-2

SECTION CORNER TO SECTIONS 25, 30, 31 + 36

NOTES OF ORIG. GOV'T SURVEY 1891

SET WOOD POST

ASH 7 N18½E 40 LKS.

ASH 4 S57E 10 LKS.

ASH 4 S87½W 23 LKS.

BIRCH 12 N67W 36 LKS.

NOTES BY JOHN J. ROSE 4-23-20

FOLDER 5 Pg. 16

Fd. CORNER UNDER CORDROY ROAD

Fd. GOV'T BT'S FOR SEC'S 25 + 30

SET 1" IRON PIPE LEVEL WITH ROAD

MARKED NEW BT'S. FOR SEC'S. 36 + 31

SPRUCE 5 S37E 32.0'

ASH 7 S47W 46.3'

3-23-83 CK-6B

NO EVIDENCE OF ORIG. BIRCH BT. REMAINS

6A WEST RANGE LINE

QUARTER CORNER BET. SEC'S. 31 & 36

NOTES OF ORIG. GOVT. SURVEY 1891

SET WOOD POST

ASH 7 S78 $\frac{1}{2}$ W 21 LKS.

BASSWOOD 6 N88E 14 LKS.

1965 ITASCA CO. FOUND EVIDENCE OF THIS BT.

1965 ITASCA COUNTY - REMONUMENTATION PROGRAM

SET 1 $\frac{1}{2}$ " x 48" I.P. WITH ALUM. CAP.

MKD B.T.S.

		MAG.	
ASPEN	10	N40E	51.13

ELM	5	S88W	36.14
-----	---	------	-------

1988 Wm. H. OKEBMAN UNDER CONTRACT FOR LINE TO STD.

FD. 1 $\frac{1}{2}$ " I.P. W/ CAP IN PLACE AND EVIDENCE OF FOLLOWING

ASPEN	12	N44E	5.93'	LIVE & WELL
-------	----	------	-------	-------------

ELM	7	WEST	36.29'	LIVE & WELL
-----	---	------	--------	-------------

STUMP	HOLE	N88E	9.29	ORIG. BT
-------	------	------	------	----------

8' STEEL SIGN POST 1.3 EAST OF CORNER 4/54-9

8' SIGN POST SOUTH APPROX. 15' OF CORN.

65 SW CORNER OF TOWNSHIP

SECTION CORNER TO SECTIONS 1, 4, 31 & 36

NOTES OF ORIG. GOVT. SURVEY 1891

SET WOOD POST

POPLAR 9 N40E 9 LKS.

POPLAR 9 S46E 21 LKS.

POPLAR 9 S48W 19 LKS.

POPLAR 10 N45W 6 LKS.

1965 ITASCA COUNTY - REMONUMENTATION PROGRAM

SET 1 1/2 X 48" I.P. WITH ALUM. CAP WITNESS BY

OAK 5 N40W 85.60'

BIRCH 5 N10E 82.70'

BASSWOOD 5 S50E 51.00'

1981 Wm. H. OKERMAN, UNDER CONTACT FOR LINE TO STD.

FOUND BIRCH BT AND IRON MONU. MISSING. HE RESTORED

CORNER POSITION FROM OAK 7" N30W 85.55' AND

BASSWOOD STUMP S60E 51.20' AND RUST ^{CORE} FROM I.P.

SET, 2" X 24" F.S. MONU. WITH CAP MARK.

NEW TIES

ASPEN 20 S58W 65.11'

OAK 8 N53W 82.95'

8' SIGN POST N46E 35.57' 54-9

8' SIGN POST S55E 29.75' 54-9

QUARTER CORNER BET. SEC'S. 6 & 31

NOTES OF ORIG. GOVT. SURVEY 1891

SET WOOD POST.

SPRUCE 22 N74W 20 LKS.

ELM 18 S22E 28 LKS.

1972 GK

Fd. 29" ELM WITH SCAR ON NW SIDE

BELIEVE THIS COULD BE ORIG. ELM

NEED TO BRING IN CHAINSAW - TO BIG TO

CHOP INTO WITH HATCHET

CHAINED INTO FROM SEC. COR. TO EAST

2640' W Fd. ELM 75' NORTH OF END OF

OUR CHAINED DISTANCE

3/11/05 GB, JS, CG

Found corner mkd. by Itasca Co.
on 6/30/04. We marked line to
standard east on this date.

Placed 8" steel sign post south
3.9' and east 3.7' ^{from corner} with both signs
attached.

7/02/004 ITASCA CO. CORNER CERT.

SET 1/2" X 2 FT REBAR/W/ 2 1/2" ALUM. CAP, FLUSH
± 13 FT EAST OF BEAVER DAM

ASH 3 1/2" N30W 3075' TO SPK

ASH 5" S70W 12020' TO SPK

ASH 6 1/2" S55°E 4808' TO SPK

67

SOUTH BOUNDARY

SEE BOOK 2 149-28 Pg. 1

67.

SECTION CORNER TO SECTIONS 5, 6, 31+32

NOTES OF ORIG. GOVT. SURVEY 1891

SET WOOD POST

SPRUCE 10 N30E 59 LKS.

ASPEN 9 S61E 47 LKS.

SPRUCE 12 S13W 27 LKS.

BALSAM 16 N80W 34 LKS.

3/11/05 - JS, CG, GB

Ed. CORNER marked by Itasca Co.

We marked line west to line to
standard on this date.Placed 8' steel sign post west
3.6 from corner with both signs
attached

QUARTER CORNER BET. SEC'S. 5 & 32

NOTES OF ORIG. GOV'T. SURVEY 1891

SET WOOD POST

SPRUCE 4 N73E 4 LKS.

SPRUCE 6 S10W 85 LKS.

SOUTH BOUNDARY

SECTION CORNER TO SECTIONS 4, 5, 32 & 33

NOTES OF ORIG. GOVT. SURVEY 1896

SET WOOD POST

ASPEN 10 N45E 38 LKS.

ASPEN 8 N63E 30 LKS.

ASPEN 10 S70E 75 LKS.

ASPEN 9 S64E 56 LKS.

NO BEARING TREES SUITABLE TO NW & SW

QUARTER CORNER BET. SEC'S, 30931

NOTES OF ORIG. GOV'Y. SURVEY 1896

SET ALM POST

ASPEN 8 N87W 10 LKS.

SPRUCE 6 N57E 7 LKS.

2004 ITASCA COUNTY
CORNER CERT

QUARTER CORNER BET. SEC'S. 19+30

NOTES OF ORIG. GOV'T. SURVEY 1896

SET ASPEN POST

ASPEN 9 S67E 9 LKS.

ASPEN 8 N87W 3 LKS.

2004 ITASCA COUNTY
CORNER CRYPT

SECTION CORNER TO SECTIONS 17, 18, 19 & 20

NOTES OF ORIG. GOV'T. SURVEY 1896

SET ASH POST

BALSAM 10 N20E 16 LKS. 10.56'

DISTANCE + BEARING FALLS IN ROAD NORTH

ASPEN 10 S80E 20 LKS. 13.20'

DISTANCE + BEARING FALLS IN ROAD EAST

SPRUCE 4 S65W 23 LKS. 15.18'

DISTANCE FALLS IN DITCH OF ROAD

ASH 8 N45W 27 LKS. 17.82'

DISTANCE FALLS IN DITCH OF ROAD

NOTES BY JOHN J. ROSE 9-24-23

FOLDER #1 Pgs. 57-58-59

DISTANCE ON DRAWING FROM 1/4 SEC'S. 17+18

2647.6 TO SEC. COR 17-18-19-20

STATE ROAD #3 MOOSE PARK - ALWOOD - ARDIENHURST
RECORDED PLAT + NOTES AT ITASCA COUNTY
COURTHOUSE 1914 BY PHIL D. FLINT

MKD NEW BT'S.

ASH 6	N41E	57.9'	FL ROTTED STP N47E - 57.9'
SPRUCE 7	S68E	42.10'	TAKE OUT BY ROAD CLEARING
SPRUCE 13	S69W	42.9'	NO TRACE AT S74W - 42.9'
SPRUCE 14	N86W	46.6'	FL LARGE SPRUCE STP. N80W - 46.6'

COUNTY DISTANCE FROM SW SEC. 17 TO 1/4 = 2649.0'

5/6/92 CK

FL IRON MONUMENT 1" IRON PIPE WITH FLANGED BASE
LOOKS LIKE OLDER COUNTY MONUMENT - FL. 8" ABOVE
GROUND - NOW DRIVEN FLUSH WITH ROAD - PLASTIC
CAP INSIDE IRON WITH RLS NO. 13310 AND LATH ALONG
SIDE IRON MKD NW COR. SEC. 20

IRON IS IN CENTER OF OLD HWY #4 N4S AND CENTER OF ROAD
EAST TO HWY #46

FL. 7" BIRCH N55W - 33.15' WITH NAIL + PLASTIC WASHER #13310
BLAZE ON FACE TO CORNER - NAIL IS 36" ABOVE GROUND ON SW SIDE

PLACED MAGNETIC PELLETS UNDER MONUMENT 24" BELOW ROAD

MARKED NEW BT'S. AS TREES ARE ON PRIVATE LAND - JUST
PLACE SPIKE + TAGS ON TREES.

ASH 4 S55W - 29.03

ASH 4 N69W - 23.55

W. SPRUCE 12 S54E 52.46'

8" STEEL SIGN POST DUE WEST 7.7'

6-26-2012 R. MAIN

FL FOREST SERVICE TYPE BRASS CAPPED IRON RLS
2/36T ± 6" BELOW CROWN. GPS/W/ SURVEY GRADE
GPS. 1992 BT'S ARE STILL GOOD.

QUARTER CORNER BET. SEC'S. 17 + 18

NOTES OF ORIG. GOVT. SURVEY 1896

SET ASH POST

BIRCH 6 S26E 7 LKS.

BIRCH 8 N76W 32 LKS.

NOTES BY JOHN S. ROSE (RLS) 1941

FOLDER #4 PAGE 41 + PAGE 39

FOUND STUMP OF SPRUCE BT

SET GALV. IRON PIPE

SPRUCE 10 S53W 53.2'

PIPE SE' 46.66'

PAGE 46

FSH 7 N40W 54.1'

FD. ASH STUMP N37W 55.8' TOP CUT OFF 24 YRS. AGO
BT SCRIBE INSIDE

FSH 7 S41W 44.0'

NOW 14" ASH S48W 45.1' SCAR FACING COR.

I.P. S51E 48.8'

10-13-82 GK-GB-JA

FD. IRON WITH PLASTIC CAP WITH NUMBER 9293

6" BELOW ROAD SURFACE - GRAVEL E+W

OLD HWY 4 N45

SURVEY BR. IRON IS 1/2" ROD LENGTH NOT KNOWN

MIND TEMP TIES

ASH 7 N29E 55.0' NAIL + BT TAG

ASH 9 S40E 56.3' " " "

FD. ROSE'S IRON BENT AT 90° ANGLE LYING ALONG
ROAD - REMOVED TO JUNK PILE
SPRUCE STUMP ROSE REFERED TO MAY BE
FROM OLD HWY 4 SURVEY AND NOT ORIG.

6-18-2012 R. MAIN

GPS IRON SURVEY GRADE COORDS

ITASCA CO NORTH N = 213388.091

E = 368558.886

SECTION CORNER TO SECTIONS 7, 8, 17 & 18

NOTES OF ORIG. GOVT. SURVEY 1896

SET ASH POST

ASPEN 10 N80E 28 LKS.

ASPEN 10 SSE 31 LKS.

BALSAM 16 S14W 56 LKS.

ASPEN 10 N83W 30 LKS.

NOTES BY JOHN J. ROSE RLS - 1941

FOLDER 4 PAGE 41

FOUND ORIG. STAKE IN $\frac{1}{4}$ OF ROAD ALL ORIG. B.T'S.
WERE DESTROYED BY ROAD CONSTRUCTIONSET $1\frac{1}{4}$ ANGLE IRON BAR ON SOUTH SIDE OF
ORIG. POST FOR PERMANANT COR.
MKD NEW B.T'S. FD. \angle IRON 1" BELOW
ROAD N+S AND FENCE EASTELM 30 N44 $^{\circ}$ 30'W 63.0'
NOW 34" ELM N37W 63.0' SCAR TO COR. NEARLY DEADASPEN 5 S83 $^{\circ}$ W 55.3'

FD. WELL ROTTED STUMP S87W 55.3' NO SCRIBE

ELM 16 S72E 76.0' DOWN

NOW 18 ELM S65E 76.0' SCRIBE SHOWING

BIRCH 5 S46E 53.9'

NOW 14 BIRCH S39E 53.9' SCAR TO COR. NEARLY DEAD

10-13-82 CK-JA-6B

FD. \angle IRON AND OLD POST IN $\frac{1}{4}$ OF OLD HWY \angle
1" BELOW GROUND
PLACE MAG. PELLET AT SOUTH EDGE OF \angle IRON
DROVE \angle IRON 6" BELOW ROAD
OLD FENCE COR. 25' E OF COR. WIRE \angle POSTS N+E
OLD PASTURE TO NE
FD. ROSE'S. B.T'S.

MMD TEMP TIES

W. OAK 4 N67W 45.2 NAIL \angle B.T. TAG OK
SPRUCE 5 S33W 35.8' " " " " OK
ASH 6 S48E 46.0' " " " " OK
BALMIE 8 N26E 51.2' " " " " 20' TALL SNAG
FSLP ON 8" ASPEN S85W 10.9' BEAVER FELLE
810' W OF HWY 46

6-26-2012 R MAIN

FD IRON IN PLACE AND GPS SURVEY GRADE.
NOW ON SOUTH EDGE BEAVER POND

75

WEST BOUNDARY

SECTION CORNER TO SECTIONS 7, 12, 13 & 18

NOTES OF ORIG. GOV'T. SURVEY 1891

SETWOOD POST

ASH 6 N51E 25 LKS.

ASH 7 S32E 30 LKS.

BIRCH 10 S66°2W 33 LKS.

ASH 8 N39W 45 LKS.

ITASCA COUNTY SURVEY OF RANGE LINE

NO DATE

MARKED NEW TIES

GOV'T. BIRCH 10 S66W 21.78'

ASH 5 N10W 31.10' CUT OFF

ASH 7 S62E 16.10' NOW 13" SPK/W

ASH 9 S20W 9.07' NOW 14" NAIL/W

ASH 9 N60W 99.44' 13" NAIL/W
19.44?

9-17-2012 R. MAIN

Fd. Co IRON IN PLACE AND GPS SURVEY
GRADE.

QUARTER CORNER BET. SEC'S, 7 & 12

NOTES OF ORIG. GOV'T. SURVEY 1891

SET WOOD POST

BASSWOOD 6 S80E 48 LKS.

BIRCH 8 S54W 26 LKS.

ITASCA COUNTY SURVEY OF RANGE LINE

NO DATE

MARKED NEW TIES

ELM 5 N27W 10.94'

ASH 6 N64E 9.25'

77

WEST COUNTRY

SECTION CORNER TO SECTIONS 1, 6, 7, 12

NOTES OF ORIG. GOVY. SURVEY 1891

SET WOOD POST

TAM. 8 N40E 35 LKS.

TAM. 5 S35E 62 LKS.

TAM. 5 S65¹/₂W 19 LKS.

TAM. 5 N55W 16 LKS.

ITASCA COUNTY SURVEY OF RANGE LINE

NO DATE

MARKED NEW BT'S.

SPRUCE 6 S53W 18.68' DOWN

SPRUCE 6 N24W 10.20' DOWN

SPRUCE 4 N25E 10.72' DOWN

SPRUCE 5 S59E 9.43' DOWN

77

874 CCC NOTES. BY LLOYD MITKE 12/21/33
 FD. SPRUCE STAKE 1 - 36" HIGH - SCRIBED
 FD. DEAD TAM. 6 N35W 50 LKS.
 NOTE ON FRONT: DOESN'T BELIEVE TO BE
 ORIGINAL CORNER AS MARKINGS ARE TO FRESH

NO TAG PLACED AT CORNER.

NOTE ON BACK: SURVEY LINES ARE CUT OUT
 AND ARE FAIRLY PLAIN - THERE ARE TWO LINES
 N&S CUT OUT - THE MORE WESTERLY LINE
 IS THE LINE ON WHICH THE CORNER STAKE
 IS LOCATED

QUARTER CORNER BET. SEC'S. 13+18

NOTES OF ORIG. GOVT. SURVEY 1891

SET WOOD POST

BASSWOOD 6 N80½E 12 LKS.

POPLAR 9 N40W 21 LKS.

79 J-21

SECTION CORNER TO SECTIONS 11, 12, 13 & 14

NOTES OF ORIG. GOVT SURVEY 1896

SET WOOD POST.

BALSAM 4 N30E 25 LKS.

1926 SPRUCE STP. N30E 16.5'

BALSAM 10 S60E 30 LKS.

1926 BALSAM DOWN S60E 19.8'

BALSAM 9 S35W 4 LKS.

1926 BALSAM STUB S35W 2.6'

ASPEN 8 N70W 37 LKS.

1926 ASPEN STUMP N70W 24.4'

NOTES BY JOHN J. ROSE (RLS) 1-11-26

FOLDER #5 PAGE #119 + 116 + 106

FOUND OLD POST LYING ON GROUND & EVIDENCE
OF ORIG. GOVT. BT'S.

SET NEW ASH POST 4" X 4" X 9'

NO NEW BT'S.

ROSE'S DISTANCE FROM S¹/₄ SEC. 12 WEST TO SC. = 2641.9'

NOTES ON 874 BY L.W. JOHNSON 2-7-34

Fd. POST MKD T150R28WS11S12 9" X 9" X 30"

PUT FSLP ON 14 BIRCH S60E 21 LKS.

" " " 5 BALSAM S63W 81 LKS.

AT THIS TIME HE HAS NOTED S13 + S14 BURNT

CC

CERTIFICATE FILED

79

9-27-74 CHAINED SOUTH FROM SEC. COR. 5280' AND
SEARCHED AREA - BUT NO EVIDENCE WAS FOUND
AREA HAS BEEN BURNED YEARS AGO

PUT FSLP ON 10" ASPEN AS APPROX. SEC. COR.
LAND TIES FROM NORTH CHECKED VERY GOOD ALONG OUR
LINE - NEED TO COME IN FROM ANOTHER DIRECTION
NOTES ON 874 BY L.W. JOHNSON 2-27-34 STATES
HE FOUND BURNT SCRIBED POST & PLACED FSLP ON
14" BIRCH S60E 13.9' FROM POST - NO TRACE REMAINS
3-3-81 OK CHAIN IN FROM WEST AND MKD POSITION
11-1-82 OK CHAIN WEST FROM 1/4 BET 12+13
ROSE'S DISTANCE 2641' - OUR LINE CAME OUT AT TAG
BY MYSELF IN 1974 BUT DISTANCE WAS 10' SHORT
FOUND FSLP BY JOHNSON ON DOWN BALSAM STOW 28.5'
NO POST WAS FOUND - REESTABLISH COR. FROM OLD
FSLP - SET 3" X 3" X 5' CEDAR POST AT COR. & PILE
3 LARGE ROCK AROUND POST - FD. EVIDENCE OF SPRUCE
STUMP N30E 16.5' AND PLACE 2" CEDAR STAKE IN STUMP
AND EVIDENCE OF ASPEN STUMP N70W 29.4' SET ASH STAKE
IN THIS STUMP

MKD TEMP TIES

ASH 5 SOUTH 34.5' NAIL + TAG FSLP
MAPLE 6 S87E 31.5' " "
B. WOOD 9 S32W 53.8' " "
ASPEN 12 N63W 11.5' 1974 FSLP

11-21-86 WILLIAM OKERMAN RLS 6807 UNDER
CONTRACT WITH U.S. FOREST SERVICE,
ACCEPTED EVIDENCE ABOVE AT TRUE CORNER POSITION
SET 2" X 5' IRON PIPE WITH BRASS CAP MKD.

TISON R28W

S11 | S12

S14 | S13

1986

RLS NO 6807

WITNESSED BY
MAPLE 8' EAST - 31.5' MKD S12 BT

ASH 5 SOUTH - 34.5' MKD S13 BT

BASSWOOD 8 S32W - 53.8' MKD S14 BT

ASPEN 10 N63W - 11.5' MKD S11 BT

8" STEEL SIGN POSTS WEST 4.0' - EAST 4.0' +
SOUTH 4.0'

DOCUMENT # 384803

QUARTER BET. SEC'S. 1+6

ORIG. GOV'T. SURVEY 1891

SET WOOD POST

BASSWOOD 8 N34E 8 LKS. = 5.28'

SPRUCE 7 WEST 39 LKS. = 25.74'

ITASCA COUNTY RESURVEY OF RANGE
LINE BET. SEC'S. 1+6

SET COUNTY IRON PIPE

NO PIPE COULD BE FOUND - IN OPEN HAY FIELD

MARKED NEW BT'S.

ASH 7 S21E 31.76'

NOW DECAYED ASH STUMP SIZE 31.76' WITH SCRIBE

ELM 10 S46W 46.18'

NOW 13" X 35' HIGH ELM SNAG S52W 46.18'

RM + CK

7/15/96 NO IRON WAS FOUND AS POSITION

FALLS IN OPEN HAY FIELD AND WOODS TRAIL

SOUTH TO COUNTY ROAD

SET 60° SPIKE IN FIELD AT DISTANCES

FROM BT'S.

MARKED TIES TO SPIKE

ASH 4" S34E 37.00' SAK + TAG

ASH 14 S19W 56.24' " "

CURVE TABLES.

Published by KEUFFEL & ESSER CO.

HOW TO USE CURVE TABLES.

Table I. contains Tangents and External to a 1° curve. Tan. and Ext. to any other radius may be found nearly enough, by dividing the Tan. or Ext. opposite the given Central Angle by the given degree of curve.

To find Deg. of Curve, having the Central Angle and Tangent: Divide Tan. opposite the given Central Angle by the given Tangent.

To find Deg. of Curve, having the Central Angle and External: Divide Ext. opposite the given Central Angle by the given External.

To find Nat. Tan. and Nat. Ex. Sec. for any angle by Table I.: Tan. or Ext. of twice the given angle divided by the radius of a 1° curve will be the Nat. Tan. or Nat. Ex. Sec.

EXAMPLE.

Wanted a Curve with an Ext. of about 12 ft. Angle of Intersection or I. P. = 23° 20' to the R. at Station 542+72.

Ext. in Tab. I opposite 23° 20' = 120.87
120.87 + 12 = 10.07. Say a 10° Curve.

Tan. in Tab. I opp. 23° 20' = 1183.1
1183.1 + 10 = 118.31.

Correction for A. 23° 20' for a 10° Cur. = 0.16
118.31 + 0.16 = 118.47 = corrected Tangent.

(If corrected Ext. is required find in same way)

Ang. 23° 20' = 23.33° + 10 = 2.3333 = L. C.

2° 19½' = def. for sta.	542	I. P. = sta.	542+72
4° 49½' = " " "	+50	Tan. =	1 . 18.47
7° 19½' = " " "	543	B. C. = sta.	541+53.53
9° 49½' = " " "	+50	L. C. =	2 . 33.33
11° 40' = " " "	543+	E. C. = Sta.	543+86.86
	86.86		

100 - 53.53 = 46.47 X 3' (def. for 1 ft. of 10° Cur.) = 139.41' =

2° 19½' = def. for sta. 542.

Def. for 50 ft. = 2° 30' for a 10° Curve.

Def. for 86.86 ft. = 1° 50½' for a 10° Curve.

