

~~150-28~~

150-28
CORNER RESTORATION
T150N R26W

Book #1

T150N R26W Bk1

Links	F
1	0
2	1
3	1
4	2
5	3
6	3
7	4
8	5
9	5
10	6
11	7
12	7
13	8
14	9
15	9
16	10
17	11

6.5 . 6.25 . 11.5 2.4

Section Corner to Sections

T149N. 4-5 T150N. 32-33

Notes of Orig. Govt. Survey of 1875
Set Cedar post

Cedar 7" N40W 201ks. = 13.20'

Cedar 8" N13E 231ks. = 15.18'

Cedar 9" S3W 141ks. = 9.24'

Cedar 20" S79E 141ks. = 9.24'

Quarter Corner Bet. Sec's. 4³ 33

Notes of Orig. Govt. Survey of 1875

Marked 7" Norway Pine for corner post

N. Pine 12" N6E 12 lks. = 7.92'

N. Pine 10" S2E 10 lks. = 6.60'

2-12, 13

Meander Corner Bet. Sec's. 4³33

West shore of Clear Lake

Notes of Orig. Govt. survey of 1875

set fir post

N. Pine 8" North 10 lks. 6.6'

found pine stp. with flat area facing lake shore

B. Pine 8" S81W 25 lks. 16.5'

found snag & stp. at brq. dist. frozen to ground

Z-12, 13

Meander Corner Bet. Sec's. 4 & 33

East shore of Clear Lake

Notes of Orig. Gov't. survey of 1875

Set Birch post

N. Pine 16" N74E 601ks. 39.6'

found burned pine remains at brq $\frac{1}{2}$ dist.

N. Pine 14" S16E 721ks. 47.5'

found pine stp. scribed Bt. S16E -47.5'

Z-13

off David

Section Corner to Sections 3, 4, 33, 34
Notes of Orig. Govt. Survey of 1875
Set Birch post

Aspen 7" N22W 471ks. = 31.02'

Falls under power line

Aspen 6" N16E 141ks. = 9.24'

Falls under power line

Birch 8" S40W 201ks. = 13.20'

Falls under power line

CCC notes by J.A. Gjelhaug 1935

fd. old squard scribed post lying on ground

No orig. bt's. found

scribed 18" N. Pine for witness to new post

Pine was N33 E - 25.1ks. = 16.5'

found N. Pine stump in power line at bry^d dist.
as described in notes also found mound of
stones 24" round with hole in center

CERTIFICATE FILED 5

To perpetuate this corner I set a 5 1/2" x 5 1/2" x
24" concrete monument 2" above ground
in ring 4' of stones, with brass cap 3" dia.
stamped

T150N R26W

533 | 534

54 | 53

T149N

1974

RLS NO. 6807

Witnessed by

D&P

N. Pine 20" S54°W - 84.3' mkd. 54 Bt. ✓

N. Pine 16" N32°W 145.2' mkd 53 Bt. ✓

N. Pine 23" S61°E 117.3' mkd. 53 Bt. ✓

N. Pine 16" N79°E 48.0' mkd. 53 Bt. ✓

Set 4" x 4" x 8' Red top Cedar post due south

with FS signs (2) 54-2 - 54-4 attached
1991 - 4x4 fallen down

6-11-74

Curtis R. Kauer

12/10/74 Wit. corner - evidence - ties

Down & Pepper

A.L.S. 5333

8/22/91 - Set 2 8' steel sign posts,
Sign post north 5.35' with both signs attached

Sign post east 2.6' with both signs attached

X-13

Quarter corner Bet. Sec's. 33 & 34

Notes of Orig. Gov't survey of 1882

set post fd. points of 4 old posts

Tam. 3" N66E 60 lks 39.6'

found stump at bry & dist. well rotted

Tam. 3" N15W 90 lks. 59.4'

no stump found

CCC notes by J.A. Gjelhaug 1936

fd. tam. post and set new post

fd. dead tam. 4" N65E 63 lks. 41.6' put RSLP

on orig. bt.

afforded

6

To perpetuate this corner I set 2" dia. 5' long galvanized steel pipe, filled with concrete and capped with 3" dia. brass tablet stamped

TISON R26W

1/4

533 534

1974

R.L.S. NO. 6807

Witnessed by

Tam. 6" N85E 132.8' mkd 1/4 534 BT ✓

Tam. 5" S56W 120.3' mkd 1/4 533 BT ✓

* Tam. 4" S70W 24.2' mkd scar BT ✓

Tam. 6" S13E 72.5' mkd. scar BT ✓

Set 8' long steel sign post due east 2.3' with FS signs
54-2 - 54-4 attached

Set 8' long steel sign post due west 9.3' with FS signs
54-2 attached

* believe these to be Iowa state eng. camp 1950s

6-11-74

12/10/74 Wit. corner - evidence - trees

Donna & Pepper

R.L.S. 5333

8/29/83 Fd. CORNER MONUMENT - IN PLACE
SIGN POST OK - NEED PAINT
BTs. Fd. AS FOLLOWS

TAM. S56W + TAM. S70W - BOTH DEAD
TAM. N85E + TAM. S13E OK - LOOKING ALIVE

V-13

Section corner to sec's. 27, 28, 33, 34
Notes of Orig. Gov't survey of 1882
Set post

Balsam 8" S28E 23 lks. = 15.18'

Fd. no evidence

Tam. 9" N52E 46 lks. = 30.36'

Fd. no evidence

Fir. 8" S34W 40 lks. = 26.40'

Fd. no evidence

Tam. 8" N37W 60 lks. = 39.60'

Fd. rotted 14" Tam at N44W at 36.8' from old
post. Fd. no scribe

874 By J.A. GJELHAUG 1/10/36

Fd. ASH POST - GOOD CONDITION - 36" HIGH

Fd. NEW BT BY COUNTY ASH S N13E 7 lks. = 4.6' FSLP

NOTE ON BACK OF 874 - OLD POST & BT'S GONE

POST IS IN LINE WITH OLD ORIG. BLAZED LINES E4W & S

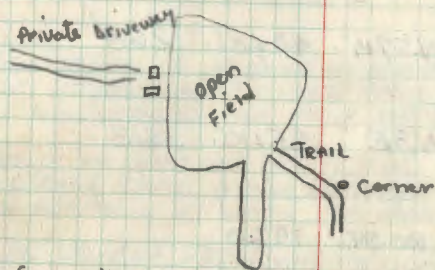
6/12/91 Krause, Brama

Fd. J.A. Gjelhaug metal tag on a 12"
Ash facing corner position. Fd. rotted
remains of a post at SSW 4.6' from the
ash. On the south side of the post is
a 3 sided, 2' long rock embedded in
the swamp. Fd. a 19" Elm snag with
scar facing corner at S83E at 24'.
Cut into elm and found blaze. ~~no~~ scribe B

DRAFT OF CERT. DONE 8/26/91 CK
CC DONE

7

Placed a new F.S.I.P. on the 2" Ash previously
recorded by Gjelhaug that says S5W 4.6'
to corner.
Woods trail from the S.E. ^{corner} of a field runs
SE 475' to corner. TRAIL is 15' south of corner



Fd. fence line going north & east from ash with tag.

8/2/91 CK, GB

Set a 2" x 48" galv. iron pipe with brass cap mkd.

Monument set 12" above ground and TISON R26W
1' north of a pyramid rock.

MKD. NEW BT'S

Ash 6" S8W 60.95' mkd. "533" "BT" 528/527

W. OAK Ash 7" N52E 46.17 mkd. "528" "BT" 533/534

Ash 6" N8E 35.32 MKD "527" "BT" 1991
USFS

Placed 8" steel sign posts west 4' and east 4'
from corner with signs attached.

Ran traverse from this corner to section
corner 28, 29, 32, 33. Distance was 5311.
and bearing of

8/20/91 Krause, Brama visit corner
need to check county records one more time.

QUARTER CORNER BET. SEC'S. 27-28
 NOTES OF ORIG. GOVT. SURVEY 1882
 SET WOOD POST

SPRUCE 5 N57W 40 LKS. 26.4'

ASPEN 15 N3E 55 LKS. 36.3'

NOTES BY JOHN ROSE 1920

FOLDER #2 PAGE 49

RAN E+W QUARTER LINE - FROM W¹/₄ TO E¹/₄

DISTANCE RECORDED 5357' AND LINE FELL

29.1' SOUTH OF ¹/₄ POST

9/10/91 GB-CK

FROM USFS MONUMENT AT SE CORNER SEC. 28

CHAIN LINE AND RUN AT N1°W - AT 1340' N FELL 30'

WEST OF 2 OLD FSLP'S. AT S¹/₁₆ - FD 1¹/₂" X 1¹/₂" X 36" STAKE

IN SWAMP - TAGS ON SAME TREE ONE DATE 1947 OTHER

DATE 1942 - STAKE IS S62W 10.5 FROM TAGS

FD, 4" SPRUCE STUB S41W 6.3' WITH FLAT UPPER BLAZE
 NEW TAG 9/12/91 BLK SPRUCE 7" S49E 110' FROM 1¹/₂ STAKE SFX BESIDE STAKE
 AND LOWER BLAZE FACING SMALL STAKE IN SWP.

CONTINUE NORTH AT N1W - LEAVE BLK. SPR. SWP. AT 2560'

SHOULD LEAVE AT 2442' - IF LINE WAS EAST 70' WE WOULD

LEAVE SWP. AT ABOUT 2460' - CONT. N1W TO 2640' N

WHICH FALLS IN 50' ROUND GRASS SLOUGH - ASPEN CUTOVER

AROUND AREA - LARGE ASPEN STANDING TO SW APPROX. 80'

FOUND OLD BLUE LINE (RUNS WEST) AT NORTH EDGE
 OF LARGER ASPEN STANDING TO SW
 NO EVIDENCE COULD BE FOUND AT THIS TIME
 CONTINUE AT N1W FROM RIBBONS (MED 2640' N
 THROUGH ASPEN CUTOVER TO 2640' N - WE NOW TIE
 INTO TAG PLACED ON 6/24/91

S¹/₁₆ CORNER IS 10' SOUTH OF WOOD TRAIL NE-SW IN
 BLK. SPRUCE SWAMP - 1335' FROM SEC. COR. TO TRAIL
 2 STRAND BARBED WIRE FENCE RUN SOUTH TO SEC. COR.

LATE IN PM - DIDN'T HAVE TIME TO MOVE
¹/₄ CORNER RIBBON SHOULD BE MOVED 47.5' TO EAST
 AND PROBABLY 35' NORTH FOR APPROX. COR. LOCATION

2675' SPLIT OF 5350' FOR TOTAL MILE

WILL CHECK ROSE'S TIES NEXT TIME INTO COR. LOCATION

9/12/91 GB-CK

MOVE FROM APPROX. COR. RIBBON ON 9/10/91

N1W 35' THEN N89E 48' FOR APPROX. ¹/₄ COR.

PLACE FSLP ON 3" ASPEN ON EAST SIDE APPROX. COR.
 IS 1.0' EAST OF TAG
 25' E OF GRASSY OPENING IN ASPEN REGENERATION
 TOTAL DISTANCE FROM SE COR-SEC 28 IS 2675' N

9
SECTION CORNER TO SEC'S. 21-22-27-28
NOTES OF ORIG. GOV'T. SURVEY 1882
SET WOOD POST

W. PINE 15 N69W 10 LKS. 6.6

BIRCH 18 S69E 35 LKS. 23.1

TAM. 14 S3W 50 LKS. 33.0

TAM. 20 N50E 38 LKS. 25.1

6/11/91 Krause + Brama

Chained from approx $\frac{1}{4}$ (established 3/6/91) S88E, 2640'. Searched $1\frac{1}{2}$ hours. No evidence found of post or BT's. Found many pine stumps in Balsam windfalls with Aspen, Balmie, Oak, Basswood & maple. Put a F.S.L.P. on a 12" Balm of Gilead that's N36W at 5.0' from a 3"x5' Elm post set today. From our approx. position we found a old rusty tag on a Balsam snag approx 150' SE. Approx. 80' south of our approx. is a old E-W blazed line (30-40 yrs) that seems to go to old tag. Also found blazed trees north of tag.

6/19/91 Brama - RAN S88E 2800' to south $\frac{1}{4}$ of Sec. 22. Line fell 173' (N2E) $\frac{1}{4}$ north of corner. Need to search east + south from our approx. position.

9
Approx. Corner is approx. 150' south of woods trail that runs SW-ENE. 3 HRS. SEARCH

6/24/91 GB-CK

FROM OUR APPROX COR. ON 6-11-91 WE MOVED 106' S88E THEN 147' AT S2W FOR NEW APPROX LOCATION

TOTAL OF MILE WEST IS 5386 AT BKG. OF S87°20'E

$\frac{1}{2}$ MILE TO EAST IS 2693 AT S87°30'E

SET ELM POST FOR APPROX. SEL COR.

PLACE FSLP ON 11 W. OAK (EAST SIDE) 15.5' WEST OF POST OLD FSLP ON BALSAM STUB IS 55' NORTH OF OUR POST 4 HRS. SEARCH TIME

NO EVIDENCE COULD BE FOUND

9/10/91 GB-CK

FROM SE COR. SEL. 28 RAN NIW S280'

WE FELL 95' WEST OF APPROX COR. POST SET ON 6/24/91

AND 15' SOUTH OF ELM POST

WHICH WOULD MAKE TOTAL LINE TO APPROX. NE COR.

SEC. 22 - 5295' AND ADD 55' TO OLD TAG ON BALSAM

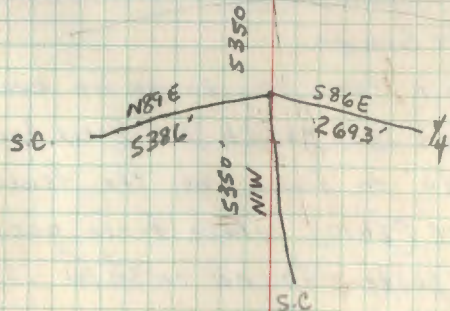
STUB - WE WOULD HAVE 5350' WHICH IS SPLIT FOR

2 MILES NYS

SEARCH AGAIN FOR $1\frac{1}{2}$ HRS. - NO EVIDENCE FOUND

9/12/91 CK-GB

Removed approx F.S.L.P. set on 6/11/91 and established a new approx. position 55' NIW from old. This new position was determined from our traverse and chainage and it is close to double proportion establishment. The new position is also at the old tag found on the balsam snag found on 6/11/91. Placed 8"x5' elm post at this new approx. position. Placed a new F.S.L.P. on 9" Maple S8W at 11.7' from approx. position.



QUARTER CORNER BET. SEC'S. 21-28
 NOTES OF ORIG. GOVT. SURVEY 1882
 SET WOOD POST

BALM OF GILEAD 20 N65E 28 LKS. 18.5'

BALM OF GILEAD 12 S25E 10 LKS. 6.6'

3/6/91 GB, RM

Chained east 2640' from section corner.
 Found no evidence of corner. Found a
 20" balmy stump NE approx 10' from our
 chained position. Found approx corner
 location poster SE $\pm 100'$ from our position.
 Fence corner is SW $\pm 100'$ from our position.
 N-S creek is just east of our position.
 Place a FSLP on a 6" balm of gilead 10'
 north of our chained position.

6/10/91 Krause & Brama

Search again for $\frac{1}{4}$. Found no evidence.
 We measured 80' south to E-W fence line.
 At our 2640' on fence line the fence corner
 is 30' west (2610) where fence goes north.
 The location poster found on 3/6/91 is 60'
 east of this corner. Poster is on a 20" spruce.

CORNER CARD BY DUFF JOHNSON 1972 AT BUREAU
 OFFICE, STATES HE PLACED FSLP ON NORTH SIDE OF
 18" SPRUCE - APPROX. COR. IS 12' NORTH OF TAG

10-15-07 R MAIN.

PLACE FSLP @ APPROX $\frac{1}{4}$ ON 3" ASPEN FROM WHICH
 APPROX COR BEARS EAST ± 60 FT. OLD TAG ON
 SPRUCE IS NOW IN BEAVER FLOODED AREA. SPRUCE
 IS NOW 6 FT SNAG. FENCE CORNER IS N50°W ± 50
 FT FROM TAG.

SECTION CORNER TO SECTIONS 20-21-28-29

NOTES OF ORIG. GOVT. SURVEY 1882

5/16/74 SET WOOD POST Fd. 4x4x POST SCRIBED

WHICH AGREES WITH TAM. STP. NE - BUT DOESN'T WITH SW BT

CEDAR 5 S24E 15 LKS. 9.9'

CEDAR STP + ROOTS UNDER MOSS + ROOTS S22E 11.0'

CEDAR 14 S60W 46 LKS. 30.4'

WITH SCRIBE TISON R26W 529 BT

FD. CEDAR 13 WINDFALL ROTTED ON BACK SIDE S62W - 23.85

TAM 18 N60E 35 LKS. 23.1'

FD. LARGE TAM. STUMP WELL ROTTED AT N62E - 24.65'

TAM. 6 N10W 10 LKS. 6.6'

FD. TAM STUMP + ROOTS AT N10W - 4.4' WELL ROTTED

9-10-07 R MAIN

GPS ED IRON. 1989 BEARING OBJECTS ARE OK

FD. CEDAR 12 S60W 23.0' SCRIBED TISON R26W 529 BT
PUT FSLP ON CEDAR 18 CORNER IS 20.0' N7E
OLD FENCE LINES N-E-W - COR. IS 450' EAST OF CO. RD 31
SET 4x4x8' CEDAR POST AT COR. 5/16/74 Cmt Khamul

5/31/89 GB-CK

FD. SCRIBED POST 4"x4"x (Removed for display on Bk. Duck Dist.)
FD. ORIG. CEDAR 12 S62W-23.85 WITH ALL SCRIBE INSIDE (WINDFALL)
FD. ORIG. TAM STUMP LARGE N62E 24.65' NO SCRIBE - WELL ROTTEDSET 6" T STEEL SIGN POST AT LOCATION OF SCRIBED WOOD POST
1.5' ABOVE SWAMP AND PLACE 2" X 48" BRASS CAPPED IRON PIPE
OVER STEEL POST WITH BRASS CAP MARKEDPLACE 4x4x8' CEDAR POST
AT NORTH SIDE OF IRON - 6' HIGH
SCRIBED IN 74

TISON R26W

S20	S21
S29	S28

1989

WITNESSED BY

RLS NO 14677

CEDAR 8 S67E - 41.80' MKD S28 BT - 5pk, tags, red band
OK 9-10-07CEDAR 9 N81W - 46.17' MKD S20 BT - 500 spk, tags, red band
OK 9-10-07

7' STEEL SIGN POST SET IN ORIG. TAM. STP. N62E - 24.65

8' STEEL SIGN POST SET AT STP. POSITION OF ORIG CEDAR
AT S62W 23.85'

8' STEEL SIGN POST ONE WEST 4605' S49

OLD FENCE COR. POST IS N6W 17.6' WITH WIRE W-N-E
1 STRAND SOUTH NO POSTS

COR. IN CEDAR SWAMP + THICK BRUSH - 12" DEEP WATER AT COR.

MANY PIECES OF LOGS CUT OFF LYING UNDER MUD + WATER IN AREA
16' SOUTH OF FENCE COR POST IS OUR LINE AT N89W
CHAINED N89W - LV. SWAMP 320' - FENCE LINE N+S 476 - & CO. RD. 31 - 500'
PUT FSLP ON 6" CEDAR FENCE POST (ON BACK SIDE) POST ON EAST SIDE OF CO. RD. 31
AND IN LINE WITH DRIVEWAY TO WEST - CORNER IS 476' S88E

QUARTER CORNER BET. SEC'S. 20-29
 NOTES OF ORIG. GOV'T. SURVEY 1882
 SET WOOD POST

SPRUCE 3 S33E 20 LKS. 13.2'

NO EVIDENCE AT BEG + DIST.

SPRUCE 4 N55E 18 LKS. 11.9'

NO EVIDENCE AT BEG + DIST.

5/31/89 GB-CK

CHAINED AT N89W - 2672' AND THEN 26' NORTH TO ROSE'S POST

36' NORTH OF FENCE WIRE INTERSECTION - WIRE E+W+N

SET 2" X 2" X 5' DRY SPRUCE POST 0.5 SE OF ROSE'S POINT

ANOTHER POINT NORTH OF ROSE'S.

ROSE'S POST IS 4" X 30" LONG ^{TO 12" WITH SCRIBE} GOOD SHARP POINT

OTHER POST POINT IS 2" X 24"

TIES TO ROSE'S POST - SPK IN TOP

BLK. SPRUCE 6 N60E 27.3' ^{SPK + TAG} MKD 1/4 S20 BT

BLK. SPRUCE 5 N37W 22.3' ^{SPK + TAG} MKD 1/4 S20 BT

BLK. SPRUCE 6 N80W 14.2' ^{SPK + TAG} MKD 1/4 S20 BT

OPEN LINE N+S FROM COR. IN SPRUCE SWP.

WIRE NORTH IS ALONG SIDE POST

NOTES BY JOHN J. ROSE 1921 FOLDER 5 Pg. 93
 FROM SW COR. SEC. 20 - RAN LINE EAST 2666.8'
 TO POST AT S 1/4 SEC. 20

Pg. 96 RAN LINE NORTH FROM S 1/4 SEC. 20
 360' LV. SWP.

QUARTER CORNER BET. SEC'S. 28-29
 NOTES OF ORIG. GOV'T. SURVEY 1882
 SET WOOD POST

TAM. 10 N61E 12 LKS. 7.9'

TAM. 14 S61W 4 LKS. 2.6'

6-2-89 GB-CK

CHAINED NORTH FROM SW CORNER SEC. 28 - 2640'
 WHICH FALLS AT CREEK - NO TRACE OF BEARING TREES
 AREA IS VERY WET AND HAS BEEN DISTURBED BY CONST.
 AS NEWER METAL CULVERTS HAVE BEEN INSTALLED
 8-15-91 GB-CK

ESTABLISHED 1/4 CORNER ON STRAIGHT LINE AND MID-
 POINT BETWEEN SW + NW CORNERS OF SEC. 28
 TRAVERSE POINT #58 IS 60° SPIKE SET AS TRUE
 1/4 CORNER POSITION

TIES TO 60° SPIKE

EAST END OF CMP - RIVIT HOLE 17.80'

WEST END OF CMP - BLACK X 40.10'

SPIKE IS ON EAST DOWN SLOPE OF ROAD FILL
 OVER HAY CREEK 4' FROM EAST SHOULDER
 17' NORTH OF CULVERT

ORIG. NOTES - TIES ALONG SECTION LINE
 39.50 N CREEK CREEK 5 LKS. WIDE RUNS WEST
 40.00 N 1/4 CORNER.

7-28-92 GB-CK

POSITION AFTER ADJUSTMENT IS .03° - N 2° 00' 47" E
 FROM 60° SPIKE SET AT 1/4 CORNER
 IN PLACE OF TRUE POSITION SET 2 1/2" X 24" IRON
 PIPE - FLANGED BASE - WITH BRASS CAP MARKED

PLACE ROCK RING AROUND
 BRASS CAP - FLUSH WITH
 SURFACE

TISON R 26W

1/4

529 | 528

1992

USFS

WITNESSES BY

8' STEEL SIGN POST - N17E - 25.78'

" " " " - N83E - 5.15'

" " " " - S26W - 65.78'

RIVIT HOLE ON EAST END OF CMP S28E - 17.83'

PUNCHED HOLE ON WEST END OF CMP S44W - 40.03'

CORNER IS 4' EAST OF EAST SHOULDER OF COUNTY
 ROAD # 31 AND 24" LOWER THAN ROAD SURFACE
 16.6' EAST OF ROAD CENTERLINE - ROAD BRS. NW-SE
 NO TRACE OF ORIGINAL OR OTHER SURVEY EVIDENCE
 COULD BE FOUND - SET BY LOST METHOD

NOTES BY JOHN ROSE 1921

FOLDER 2 Pgs. 48 + 49
 FOUND SOMETHING AT 1/4 CORNER LOCATION
 RAN E+W CENTERLINE SEC. 28

8-21-07 R MAIN
 GPS IRON

V-9

Corner Common to Sections 28, 29, 32 & 33

Notes of Orig. Govt. survey 1882 ^{5/16/74 CK.}

Set wood post Fd. remains of pine post
no scribe visible - beside 48" Cedar post - in rock mound

Blk. Pine 8 S50W 22 lks. = 14.5'

Blk. Pine 10 N43W 30 lks. = 19.8'

^{5/16/74} Fd. stp. hole with burned wood inside

Blk. Pine 10 S43E 10 lks. = 6.6' ^{2" high}
Fd. J. Pine stp. S25E - 6.6 with scribe BT visible ^{in face at grd. level.}

Blk. Pine 10 N56E 40 lks. = 26.4'
Fd. rotted remains and tap root at N54E 24.5

874 By J.A. GJELHAUG 1/10/36

Fd. PINE POST - GOOD CONDITION - 40" HIGH (NO SCRIBE).

Fd. J. PINE STUMP 10 S26E 9 LKS. MKD BT

Fd. J. PINE STUMP 10 N4W 10 LKS, Chop marks visible ^{Now at N7E at 8.3'}

MARKED NEW BT

Old FSLP still on tree

N. PINE 12 N25E 118 LKS. = 77.9' MKD S28 BT FSLP

6/1/89 CK-GB

Set a 2 1/2" x 48" galv. concrete filled monument with
brass cap mark in center of old decayed post ^(See pictures)

position. Brass cap set 12" above ground Placed

a few rocks around monument.

New BT's TISON R26W

N. Pine 12" N 14 E 54.78' 528 BT ^{Two Blazes} S29 S28

N. Pine 12" S 48 E 34.19' 533 BT ¹⁹⁸⁹ S32 S33

N. Pine 12" S 73 W 10.05' 532 BT ⁵⁰⁰ spikes, tags, red bands

N. Pine 12" N 24 W 27.70' 529 BT

CC DONE

CERTIFICATE FILED

14

C.C. Done 11/15/89

5 chs. west of corner enter swp.
Put FSLP on 12" N. Pine S65W - 12.1' from post
drove 30" long piece of old steel fence post beside cedar
post - mound of rock ground wood post
Fd. 21" N. Pine N24E - 78.4' mtd. S28 BT visible 5/16/74

6/1/89 After further review of J.A. Gjelhaug's position of
his wood post, we believe his position was the flop post.
Reasons are:

1. South-east bearing of the original J. Pine doesn't fit his bearing and lower blaze points N43W.
2. Scrape ground at N43W from J. Pine stp and found where a old rotted decayed post went down in the ground at N44W 5.6' from original J. Pine stp
3. Found remains of burnt and rotted pine stps. that seem to fit original bearing and not distance. As previously stated by J. Rose that he had trouble agreeing with those distances recorded by J.R. King and our experiences with King's recordings of BT distances of even 0' links and one odd to make his work looked like it was measured. J.R. King also liked to use a "5" for links.
4. Bearings seem to match closely to J.R. King. For example Section corner 1 mile north of here for 20, 21, 28, 29.

^{Need} Tie to J.A. Gjelhaug's BT is N25E, 81.3. Scribe vis. ^{N. Pine 23"}
Ties to possible original BT's: (Burnt and rotted stps) flush with ground
~~N 42 W at~~ } Placed 60d in center of each stp.
1. S 50 W at 12.5
2. N 54 E at 24.5

Placed old and rotted pine post on the ground along side of monument.

ES. road # 3648 is 96" north of corner and winds NW - Eventually road turns NE and heads out to county road 31.

Corner falls in a converted N. Pine stand with scattered J. Pine. N. Pine plantation (5yrs old) approx 150' east.

John Rose has made this general statement about other corners surveyed by J.R. King. J. Rose was never at this section corner.

8' STEEL SIGN POSTS SET 4.0' SOUTH + WEST - BOTH SIGNS

QUARTER CORNER BET. SEC'S. 32-33

NOTES OF ORIG. GOVT. SURVEY 1882

SET WOOD POST

HSPEN 14 N73E 10 LKS. 6.6'

HSPEN 10 S45W 13 LKS. 8.6'

QUARTER CORNER BET. SEC'S. 28-33

NOTES OF ORIG. GOVT. SURVEY 1882

SET WOOD POST

TAM. 4 S45E 35 LKS. 23.1'

TAM. 3 N60W 30 LKS. 19.8'

7/30/91 RM-CK-GB LIGHT RAIN BOOK WET

Fd. 3x3x5' LONG CEDAR POST

LYING IN BOG - BASE WAS IN
PLACE AT 45° X

N20W 12 LKS TO 1/4

OLD FSLP 1/15/36

7" TAM STUB S27E 7.50 NAIL OLD FSLP

TAM STUB 10" N29E 14.40 NAIL BTM 6

115' E TO LAKE

8/22/91 GB-CK

SEARCH FOR ORIG. EVIDENCE NEAR AREA OF POST
40' CIRCLE AROUND POSTFD. SEVERAL TAM SNAGS WITH SCARS AND CHIPPING
IN AREA - NO SCRIBE COULD BE FOUND

2 HRS. SEARCH

REMOVE TAM POST FOUND AT COR. LOCATION

NO SCRIBE ON POST

AND PLACE 8" STEEL SIGN POST IN POST HOLE

THEN PLACE 2" x 48" IRON PIPE OVER STEEL POST

TO PERPETUATE 1/4 COR.

BRASS CAP MARKED

TISON R26W

PLACE OLD POST AT NORTH

SIDE OF 2" IRON

CAP IS 20" ABOVE SWAMP

'IN CASE OF FLOODING

IN FUTURE YEARS

WITNESSED BY

1/4 528
533

1991

USFS

8" STEEL SIGN POST DUE NORTH 4.0 BOTH SIGNS

" " " " " SOUTH 4.1 " "

" " " " " EAST 4.1 " "

TAM STUB 10 N29E 14.40 MKD 1/4 528

TAM STUB 7 S26E 7.50 MKD 1/4 533 BT

95' WEST OF MONUMENT AT BASE OF STEEP HILL
AND LV. SWP.

2-23-07 Jim Schomover

Found BTs - sign posts and corner
all in good shape.

17 N-13
SECTION CORNER TO SEC'S. 15-16-21-22
NOTES OF ORIG. GOV'T. SURVEY 1882
SET WOOD POST

BALSAM 6 S20W 10 LKS. 6.6'

BALSAM 5 N46E 26 LKS. 17.2'

(1935) Fd. BALSAM IN GOOD CONDITION

BIRCH 7 S20E 16 LKS. 10.6'

(1935) Fd. BIRCH IN GOOD CONDITION

BALSAM 4 N39W 32 LKS. 21.1'

POMEROY COUNTY ROAD SURVEY - By L.W. JOHNSON

1935 - PLAT AND NOTES ON FILE AT ITASCA CO.

COURTHOUSE

SOUTH LINE OF SEC. 15 - W $\frac{1}{2}$ 2584.7 - E $\frac{1}{2}$ 2689.5'

MARKED NEW BT'S.

CEDAR 8 S26W 37.85'

Fd. CEDAR WINDFALL AT S32W 37.8'

CEDAR 7 S40E 42.35'

Fd. CEDAR WINDFALL AT S32E 42.4'

DRAFT OF CERT. DONE 8/26/91 CK

CC DONE

17

874 BY RALPH R. JOHNSON 7/17/35
Fd. WOOD STAKE 3X3X36 - IN GOOD CONDITION
SCRIBED WITH SECTION'S
Fd. CEDAR 7 S22 $\frac{1}{2}$ E 61 LKS. 403' FSLP.
Fd. CEDAR 7 S41W 65 LKS. 42.9'
CORNER LOCATED ON PROPOSED ROAD CENTER LINE

6/13/91 GB-CK (OLD RUSTED FSLP ATTACHED)
Fd. CEDAR WINDFALL AT S32E - 42.4' IN BAD SHAPE

Fd. CEDAR WINDFALL AT S32W - 37.8' IN BAD SHAPE

DUG HOLE 24" X 30" SQUARE 18" DEEP - NO POST COULD
BE FOUND - SET 60^o SPIKE AT BRG + DISTANCE
FROM CEDAR REMAINS TO MARK CORNER LOCATION
OLD BAYE LINE RUNS NORTH FROM CORNER LOCATION
CORNER IS IN CENTER OF OLD COUNTY ROAD E+W
ROAD APPEARS TO BE 24' WIDE WITH DITCHES - BOTH SIDES

6/17/91 GB-CK 20"
SET 2" X 18" GALVANIZED STEEL PIPE (from evidence
of Cedar BT's.) WITH BRASS CAP MARKED
T150NR26W

MONUMENT IS SET
6" BELOW ROAD SURFACE

S16	S15
S21	S22

1991
USFS

WITNESSED BY

ASH 4 S23E - 62.60' MKD S22 BT

ASH 3 S13W - 46.55' MKD S21 BT

BALMIE 12 S33W - 46.0' MKD S21 BT

8" STEEL SIGN POST DUE NORTH 20.7' 4/54-9

8" STEEL SIGN POST AT N45E 32.3' 4/54-9

AREA OF CORNER IS VERY WET AT THIS TIME - DITCH
TO NORTH IS FULL OF WATER AND RUNNING SOUTH
ACROSS ROAD - ROAD BED IS HEAVY CLAY

NOTE: THIS CORNER IS TIED INTO BY TRAVERSE FROM WEST

JOHN ROSE TIED INTO THIS CORNER POSITION ALSO
FOLDER 3 - PAGE 59 JULY - 1920
SOUTH LINE OF SECTION 16 IS 5544' LONG

8/20/91 MCA

QUARTER CORNER BET. SEC'S. 15-22

NOTES OF ORIG. GOV'T. SURVEY 1882

SET WOOD POST.

SPRUCE 20 N75E 25 LKS. 16.5'

(1935) Fd. SPRUCE DOWN

SPRUCE 9 S45E 20 LKS. 13.2'

(1935) Fd. SPRUCE DOWN

POMROY COUNTY ROAD SURVEY - 1935 By.

L. W. JOHNSON - PLAT AND NOTES ON FILE AT

ITASCA COUNTY COURTHOUSE.

SOUTH LINE OF SEC. 15 - W $\frac{1}{2}$ 2584.7' + E $\frac{1}{2}$ 2689.5'

SET CORNER AND TWO NEW BT'S.

BALSAM 10 N49E 71.90'

BALSAM 9 S26W 39.60'

874 By RALPH R. JOHNSON

Fd. SCRIBED WOOD POST 3X3X36 - IN GOOD

CONDITION

Fd. SPRUCE? 10 S34 $\frac{1}{2}$ W 59 LKS, = 38.94' FSLP

Fd. ASH? 8 N57E 1.09 LKS, = 71.94'

CORNER LOCATED IN LOW GROUND

ON PROPOSED ROAD CENTER LINE

8/19/91 CB-CK

CHAINED EAST DOWN CENTERLINE OF OLD TOWNSHIP ROAD
2585'E - SEARCH 2 HRS. - NO EVIDENCE WAS FOUND
ASPEN CUTOVER TO NORTH - OLD FLOODED AREA TO SOUTH
PLACE FSLP ON 4 ELM N20E - 26.0' FROM APPROX.
CHAINED LOCATION IN CENTER OF OLD ROAD GRADE E+W

SECTION CORNER TO SEC'S. 14-15-22-23

NOTES OF ORIG. GOV'T. SURVEY 1882

SET WOOD POST

ASPEN 18 S49E 18 LKS. 111.9'

1935 Fd. ASPEN STUMP WITH SCRIBE BT

FIR 9 S57W 4 LKS. 2.6'

SPRUCE 10 N64E 35 LKS. 23.1'

SPRUCE 12 N29W 30 LKS. 19.8'

POMROY COUNTY ROAD SURVEY - 1935 - BY
L. W. JOHNSON - PLAT AND NOTES ON FILE AT

ITASCA COUNTY COURTHOUSE

FOUND CRUISER POST

MARKED NEW BT'S.

1991 POPLAR 14 N3W 103.80'

Fd. ^{large} Aspen windfall N6E 103.80' Scar visible.

1991 POPLAR 13 S49E 76.5' S39E @ 76.5'

Fd. Aspen stump flush with ground S39E @ 76.5'

BALMIE 16 S13W 46.65'

1991 Fd. large Balmie stp. nearly flush with grd. at

S24W @ 46.65', QUART BOTTLE IN STUMP 811191
(placed 1991)Fd. Itasca county F.S.L. Plon 5" Spruce
north of corner position. It now measures

14.0' at N4W from corner position.

874 BY RALPH R. JOHNSON 7/17/35
Fd. WOOD POST SCRIBED - 3 X 3 X 36
IN GOOD CONDITION

Fd. BALMIE 18 S21W 72 LKS. = 47.5' KSLP

Fd. ASH 10 S39E 1.76 LKS. = 116.16'

Fd. ASPEN 12 N5 1/2 E 1.57 LKS. = 103.16'

CORNER LOCATED IN LOW GROUND - IN PROPOSED

ROAD CENTER LINE

7/31/91 Krause, MAIN, + BRAMA

Mkd New BT'S:

W. Spruce 6" N56E @ 31.0' S14 BT Double blaze

W. Spruce 8" N39W @ 26.26 S15 BT " " 60

Balmie of 6 1/2" 9" S10 E @ 24.10' S23 BT " " 60

Ash 2" S43 W @ 39.95 X BT " " 60

set a 600 spike for corner position in center
of east + west old road grade.Itasca county ^{CHAINED} changed county distance in the
winter of 1991. Distance checked good.

8" STEEL SIGN POST, DUE NORTH 15.95' 4/24-9 ATTACHED

8-1-91 70"

SET 2" X 10" IRON PIPE WITH BRASS CAP MARKED

IN PLACE OF SPIKE FOR CORNER

IRON SET 4" BELOW SURFACE TISON R26W

S15 S14

S22 S23

1991

USFS

QUARTER CORNER BET SEC'S. 14-23
 NOTES OF ORIG. GOV'T SURVEY 1882
 SET WOOD POST

ELM 5 N30E 6 LKS. 4.0'
 (1935) Fd. ELM STANDING

ASH 6 S30W 6 LKS. 4.0'
 (1935) Fd. ASH DOWN

POMROY COUNTY ROAD SURVEY - 1935 - By
 L. W. JOHNSON - PLAT AND NOTES ON FILE
 AT ITASCA COUNTY COURTHOUSE

SOUTH LINE OF SEC. 14 - W $\frac{1}{2}$ 2675.0' + E $\frac{1}{2}$ 2674.0'

MARKED NEW B.T'S.

CEDAR 14 S3E 53.9'
 7/25/91 Fd. 19 CEDAR AT S7W - 53.9' WITH SCRIBE VISABLE
OLD RUSTED FSLP

ASH 8 N36E 42.85'

NO TRACE OF ASH AT N44E - 42.8'

874 By RALPH R. JOHNSON 7/17/35
 Fd. WOOD STAKE SCRIBED - IN GOOD CONDITION
 Fd. CEDAR 12 S6 $\frac{1}{2}$ W 82 LKS. = 54.12' FSLP
 Fd. ASH 8 N53 $\frac{1}{2}$ E 65 LKS. = 42.90'

CORNER IN LOW GROUND ON PROPOSED
 ROAD CENTER LINE

8/1/91 GB-CK-RM
 BY TRAVERSE FROM SE COR TO SW COR. SEC. 14
 TOTAL DISTANCE OF 5351.2' THEN PROPORTION IN COUNTY
 ERROR - THEY HAD 5349.0'
 DISTANCES NOW ARE E $\frac{1}{2}$ 2675.1' W $\frac{1}{2}$ 2676.1'
 SEE TRAVERSE BOOK

SET 2" X 18" IRON PIPE WITH BRASS CAP MARKED
 4" BELOW SURFACE
 IN CENTER OF OLD CLEARING
 AND ROAD BED

T/SON R 26W
 $\frac{1}{4}$ S14
 S23

1991
 USFS

W. OAK 7 N10W - 54.42' MKD $\frac{1}{4}$ S14 BT

ASH 8 N44E 67.53 " $\frac{1}{4}$ S14 BT

ASH 11 S26W 39.75 " $\frac{1}{4}$ S23 BT

8' STEEL SIGN POST DUE SOUTH 22.7' / 54-9 ATTACHED

RESURVED COUNTY CEDAR 19 S7W - 53.9
 MKD $\frac{1}{4}$ S23 BT

SECTION CORNER TO SECTIONS 13-14-23-24

NOTES OF ORIG. GOV'T. SURVEY 1882

SET WOOD POST

SPRUCE 10 N53E 14 LKS. 9.2'

(1935) Fd. SPRUCE NE

SPRUCE 8 S34W 10 LKS. 6.6'

SPRUCE 10 S37E 20 LKS. 13.2'

SPRUCE 20 N37W 4 LKS. 2.6'

(1935) Fd. SPRUCE NW

POMROY COUNTY ROAD SURVEY - 1935 - BY

L. W. JOHNSON - PLAT AND NOTES ON FILE

ITASCA COUNTY COURTHOUSE

MARKED NEW BT'S.

TAM. 12 S28W 42.90'

Fd. 12" TAM. WINDFALL AT. S43W - 42.9' SCAR - NO TAG

TAM. STP. 7 S36E 37.70'

Fd. 7" TAM. STUMP AT S23E - 37.6' (HORNET NEST) NO SCRIBE

SPRUCE STP. 6 N35E 49.05'

Fd. 6" SPRUCE STUMP AT N43E 49.05' WELL ROTTED

874 BY RALPH R. JOHNSON 7/17/35
Fd. WOOD STAKE - SCRIBED - IN GOOD CONDITION
3X3X36Fd. TAM. 7 S27¹/₄E 57 LKS. = 37.62'Fd. TAM. 10 S37¹/₂W 65 LKS. = 42.90' FSLPCORNER LOCATED IN SWAMP - ON PROPOSED
ROAD CENTER LINE7/25/91 GB-RM-CK
FOUND MANY PIECES OF WOOD POST - IN CENTER LINE
OF OLD COUNTY ROAD - IN WET GRASS SWAMP
COUNTY CHAINED DISTANCE (SPIKES) FELL 2.0' EAST
OF OLD POST - COUNTY CHAINED THIS PAST WINTERSET 2" X ²⁰ GALVANIZED STEEL PIPE WITH BRASS
IN PLACE OF SPIKE CAP MARKEDMONUMENT NOW IS FLUSH
WILL SET LOWER - AFTER
WE BRING IN SIGN POSTS
TO WITNESS 2" IRON

8/1/91

MONUMENT IS 4" BELOW
MARSH GRASS

TISON R26W

S14 | S13

S23 | S24

1991

WITNESSED BY

USFS

TAM. 7 N69E 66.60' MKD TISON R26W S13 BT

CEDAR POST 4X4X7' LONG - NOW STANDS 48" HIGH
SOUTH 11.27' NEW FSLP ON POSTOLD GRADER BLADE 1/2 X 4" X 6' LONG IS SOUTH
6.7' WITH NO TRESPASS SIGN

PROPERTY OF RICHARD GOLDSTEIN

LAND OWNER WAS WITH AT SEC. COR. - HE WAS INTERESTED
AS TO LOCATION OF TRUE CORNER - HE WOULD LIKE
TO OPEN LINE TO SOUTH FOR LOGGING SOON

NO GOOD BT'S NEAR

8/1/91

PLACE 8' STEEL SIGN POST IN TAM STUMP AT S43W
42.85' WITH 54-9 ATTACHED

PLACE 8' STEEL SIGN POST DUE NORTH - 13.65' - 54-9 ATTACHED

QUARTER CORNER BET. SECTIONS 13-24
 NOTES OF ORIG. GOVT. SURVEY 1882
 SET WOOD POST

SPRUCE 12 N47E 28 LKS, 18.5'

(1935) Fd. SPRUCE

SPRUCE 18 S47W 39 LKS, 25.7'

(1935) Fd. SPRUCE - ANGLE ON SW SPRUCE DIDN'T CHECK

POMROY COUNTY ROAD SURVEY - 1935 - By
 L.W. JOHNSON - PLAT AND NOTES ON FILE AT
 ITASCA COUNTY COURTHOUSE

SOUTH SIDE OF SEC. 13 - W $\frac{1}{2}$ 2656.1' + E $\frac{1}{2}$ 2618.1'

MARKED NEW BT'S,

SPRUCE 10 N16W 44.35'

Fd. WELL ROTTED STUMP + LOG N8W - 44.35'

BALSAM 6 N31E 40.60'

Fd. WELL ROTTED STUMP + LOG N36E - 40.60'

874 By RALPH R. JOHNSON 7/17/35

Fd. WOOD POST 3x3x36 - SCRIBED - IN GOOD
 CONDITION

Fd. SPRUCE 10 N6 $\frac{1}{2}$ W 67 LKS. = 44.22' FSLP

Fd. BALSAM 6 N38 $\frac{1}{4}$ E 62 LKS. = 40.92'

CORNER LOCATED ON PROPOSED ROAD CENTER LINE

8/2/91 CK, GB

Fd. BOTH COUNTY BT STUMPS AS RECORDED

Fd. 4x4 A 5 $\frac{1}{2}$ SQ. POST MKD $\frac{1}{4}$ S13 + $\frac{1}{4}$ S24
 REMOVED FOR DISPLAY - 24" BELOW ROAD
 LYING WESTERLY - POINT WAS IN PLACE AT ANGLE
 PLACE 8' STEEL SIGN POSTS AT COUNTY STUMPS

8' STEEL SIGN POST SET IN STUMP N8W - 44.7'
^{54.9}

8' STEEL SIGN POST SET IN FRONT OF STUMP N36E - 39.45'
^{54.9}

8' STEEL SIGN POST SET DUE SOUTH 14.6' 54.9

SET 2" x 24" FS IRON PIPE WITH BRASS CAP MARKED

TISON R 26W

$\frac{1}{4}$ $\frac{S13}{S24}$

1991

USFS

CORNER IS SET 6" BELOW SURFACE OF MARSH GRASS
 IN CENTER OF OLD ROAD CLEARING
 125' EAST OF CORNER LEAVE SWAMP

QUARTER CORNER BET. SECS. 3+34

ORIG. GOV'T. SURVEY 1882

SET ASPEN POST

ASPEN 12 S37W 12 LKS = 7.92'

ASPEN 14 N52W 14 LKS = 9.24'

24 M.C.

SOUTH BOUNDARY

QUARTER CORNER BET. SEC'S, 1+36

ORIG. GOV'T. SURVEY 1882

TAM. POST 4" X 4"

TAM. 7 N72W 320 LKS. = 211.20

TAM. 6 S86W 400 LKS. = 264.00'

24

40.10 CHS. = 2646.6'

QUARTER CORNER BET. SEC'S, 2+35

ORIG. GOV'T. SURVEY 1882

CEDAR 8 S57E 15 LKs. = 9.90'

SPRUCE 14 N65E 15 LKs. = 9.90'

MEANDER CORNER ON SOUTH BANK OF
BIG FORK RIVER BET. SEC'S. 31+36
ORIG. GOV'T. SURVEY 1882
SET WOOD POST

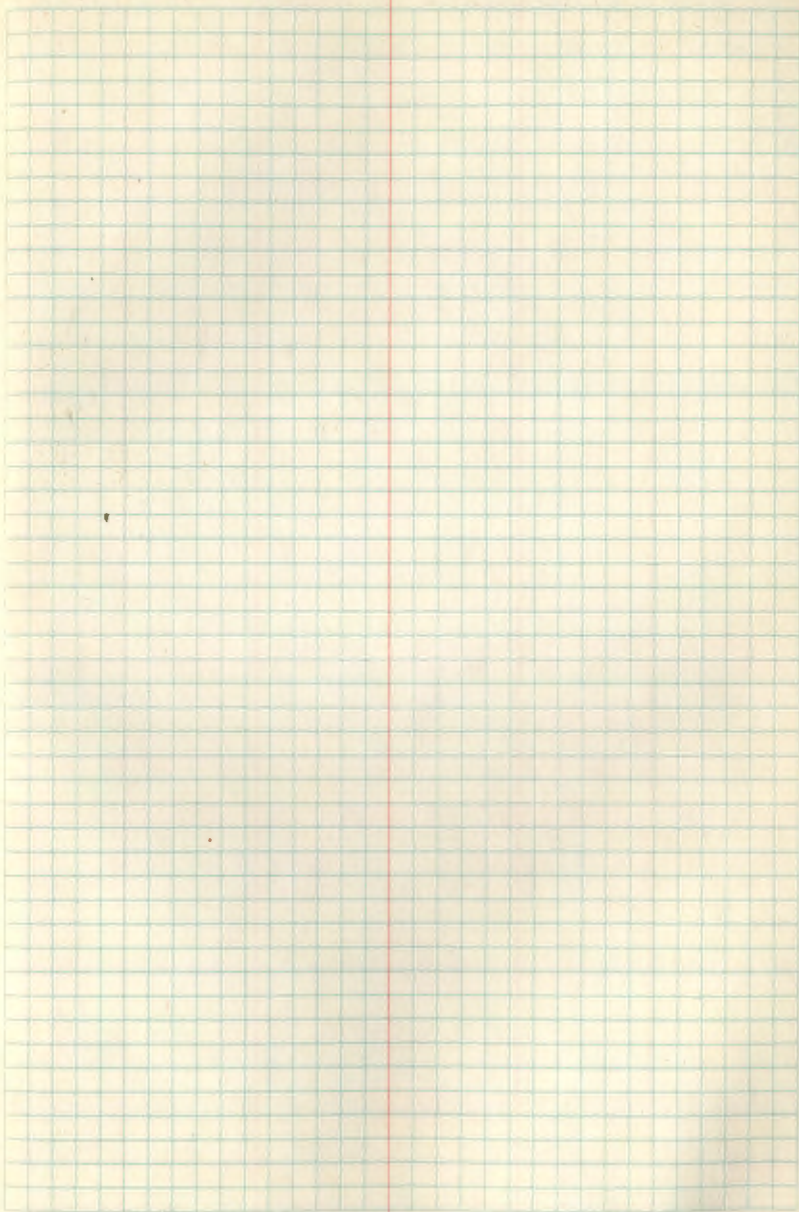
ELM 8 S77W 50 LK. = 33.0'

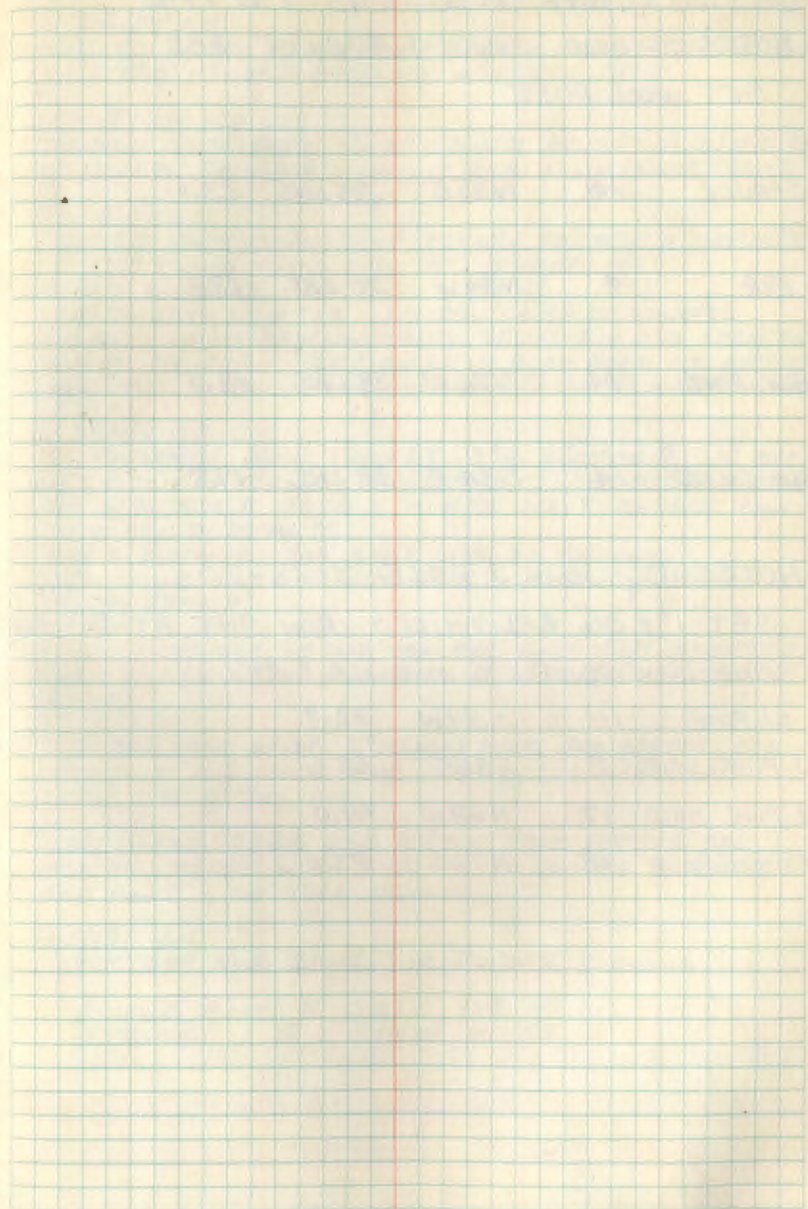
ASPEN 4 N83E 15 LK. = 9.90'

MEANDER CORNER ON NORTH BANK OF
BIG FORK RIVER BET. SECT'S. 31+36
ORIG. GOV'T. SURVEY 1882
SET WOOD POST

ASPEN 10 N21E 70 LK_s = 46.20'

ASPEN 15 N3W 109 LK_s = 71.94'





SECTION CORNER TO SECTIONS 7-8-17-18

NOTES OF ORIG. GOV'T. SURVEY OF 1882

SET WOOD POST

SPRUCE 16 N35E 35 LKS. 231'

FIR 4 N34W 20 LKS. 132'

BLK. PINE 14 S76W 28 LKS. 185'

BAM-GILEAD 14 S34E 30 LKS. 198'

NOTES BY JOHN J. ROSE 8-28-20

SET 1" X 36" GALVANIZED IRON PIPE AT SEC. COR.

AND OAK POST - MKD NEW BT'S.

W. PINE 14 S54W 32.7'

J. PINE STUB 8 S80E 58.6'

J. PINE STUB 12 N68W 41.0'

BALMIE STUB 18 N76E 75.0'

11-25-74 CK

CHAINED NORTH FROM Q₄ OF COUNTY RD. #31 A DISTANCE OF 2780' - ROSE'S DISTANCE RECORDED 2781

8-18-81 JA-JO

CHAINED SOUTH FROM Q₄ OF COUNTY RD. #31 A DISTANCE OF 2652' FD. ROSE'S IRON - ROSE'S DISTANCE 2652'

9-2-81 CK-

CHAINED EAST DOWN Q₄ OF COUNTY RD. #31 A DISTANCE OF 2677 AND FOUND IRON AT S¹/₄ SEC. 8

ROSE'S DISTANCE 2677'

SEARCH WITH LOCATOR - NO IRON COULD BE LOCATED
NO EVIDENCE OF BEARING TREES REMAINS - OLD OPEN FIELDS
AROUND SEC. COR. - SET SPIKE IN Q₄ OF ROAD AS APPROX.
SEC. COR. - OLD FENCE LINE SOUTH IS 9' WEST OF SPK.

6-26-91 GB-CK

BY TRAVERSE FROM IRON AT S¹/₄ SECTION 8 WE RAN
WEST TO SW CORNER OF SECTION 7 - A TOTAL DISTANCE
OF W¹/₂ SEC. 8 2675.3 - E¹/₂ SEC. 7 2678.5 AND
W¹/₂ SEC. 7 2944.95'
ROSE'S DISTANCES FOR SAME LINE AS FOLLOWS
W¹/₂ SEC. 8 2677' - E¹/₂ SEC. 7 2680.2 AND W¹/₂
SEC. 7 2946.8'TOTAL DISTANCE OF OUR TRAVERSE WAS 5.11' SHORTER
THAN ROSE'S. - WE PROPORTION ERROR AS RECORDED
ABOVESET RAILROAD SPIKE 5" BELOW ROAD FOR APPROX. SEC.
CORNER - OLD FENCE LINE SOUTH IS 6' WEST OF
SPIKE FOR APPROX. COR.ROAD BEARS S88E AND N84W FROM APPROX. COR.
WILL TRY TO DIG WITH BACKHOE TO LOCATE POSSIBLE
OAK POST - NO TIES REMAIN

9/17/91 CK

TIE OFF R.R. SPIKE FOR FUTURE DIGGING

POWER POLE 8 S51E 63.75'
SPRUCE 5 S14W 61.55'

QUARTER CORNER BETWEEN SEC'S. 7-8

NOTES OF ORIG. GOV'T SURVEY OF 1882

SET WOOD POST

SPRUCE 5 S20W 10 LKS. 6.6'

FIR 4 N30E 16 LKS. 10.6'

NOTES BY JOHN J. ROSE RLS 1920

SEARCH FOR ORIG. EVIDENCE - NONE FOUND
CORNER SET BY PROPORTIONAL MEASUREMENT
BETWEEN SECTION CORNERS

SET 1" X 36" IRON PIPE - NO BT'S. MARKED
11-25-74 CK.

A LOCAL RESIDENT OF MANY YEARS MR. EARL HAINS
KNEW OF PIPE BEING PLACE AT THIS LOCATION
BY J. ROSE IN 1920 - HE ACCOMPANIED US TO
LOCATION OF IRON PIPE AND SAID HE WALKED
BY IRON MANY TIMES OVER THE YEARS HUNTING
AND TRAPPING - WE CHAINED NORTH FROM $\frac{1}{4}$
OF COUNTY ROAD 2780' OUR LINE FELL APPROX.
21' EAST OF IRON, BUT DISTANCE WAS VERY CLOSE
TO ROSES NOTES OF 2781'

SET 3" ASH POST BESIDE IRON AND PLACE FSLD
ON 21" W. OAK N12W - 39.3' FROM IRON
WOODS TRAIL NW-SE IS APPROX. 560' N OF IRON

11-25-74

Curtis R. Kramer

CHAINED NORTH FROM IRON 2782' TO SEC. COR.
LINE FELL WEST OF IRON 13' DISTANCE
VERY CLOSE TO ROSE'S NOTES 2781'
DISTANCE CHAINED EAST FROM IRON TO CENTER $\frac{1}{4}$
SEC. 8 WAS 2670' BY. JEFF ALISON 1981 SURV. TECH.
WITH BLACKDUCK DISTRICT - LINE WAS OPENED
TO CHECK IF CW 116 WAS ON LINE - HE STATED
DISTANCES AND LINE WERE VERY GOOD
IRON AT $\frac{1}{4}$ 7-8 SEEMS TO BE IN PLACE WITH ROSES
SURVEY AND THEREFORE WAS MONUMENT AS GOOD
CORNER - LINE TO STANDARD WAS STARTED IN
FALL OF 1981 TO BE COMPLETED IN 1982

Curtis R. Kramer

SET 2" DIA. X 5' LONG IRON PIPE WITH 3" DIA. CAP MKD.

RESET ROSE'S IRON BESIDE
F.S. MONU.

T150N R26W

$\frac{1}{4}$

57 | 58

1981

RLS NO

WITNESSED BY

W. OAK 21 N12W 39.15' MKD. $\frac{1}{4}$ 57 BT

W. OAK 5 S73E 54.40' MKD. $\frac{1}{4}$ 58 BT

W. OAK 4 S51W 33.60' MKD. X BT

ASH 5 N73E 26.80' MKD. $\frac{1}{4}$ 58 BT

ASH 5 N36W 14.40' MKD. X BT

SET 8" STEEL SIGN POSTS NORTH 4.75' AND
SOUTH 5.2' WITH BOTH SIGNS

8-4-81

Curtis R. Kramer

SECTION CORNER TO SECTIONS 5-6-7-8

NOTES OF ORIG. GOVT. SURVEY OF 1882

SET WOOD POST

CEDAR 4 S35W 20 LKS. 13.2'

J. ROSE 1920 Fd. STANDING NO EVIDENCE 1981 CK

CEDAR 6 N24W 44 LKS. 29.0'

J. ROSE 1920 Fd. STANDING NO EVIDENCE 1981 CK

SPRUCE 5 S19E 50 LKS. 33.0'

NO EVIDENCE Fd. 1920

TAM 12 N63E 70 LKS. 46.2'

J. ROSE Fd. STUB STANDING NO EVIDENCE 1981 CK

NOTES BY JOHN. J. ROSE RLS 1920

FOLDER #3 PAGE 78

Fd. ORIG. BEARING TREES - 3 STANDING 1 MISSING

SET NEW CEDAR POST 4" X 4" X 5' AND 1" X 36" IRON PIPE

SET 2" DIA X 5' LONG IRON PIPE WITH 3" DIA. CAP MARKED

RESET ROSE'S IRON AT NORTH T150N R26W

EDGE OF E.S. MONU.

WITNESSED BY

W. OAK 9" N22W 17.73 MKD. T150N R26W 56 BT

W. OAK 8 N87W 13.55 " T150N R26W 56 BT

W. OAK 6 N54W 14.95 " 56 BT

ASH 8 S36W 83.84 " T150N R26W 57 BT

ASPEN 12 S50E 53.85 " T150N R26W 58 BT

ASH 5 N21E 55.62 " 55 BT

SIGN POSTS TO BE SET LATER - 8' SIGN POST NORTH 5.0'

8-10-81 Curtin R. Kramer

Fd. 1" X 36" IRON PIPE IN PLACE IN BRUSHY-WET SWP,
 CHAINED INTO RAER FROM IRON FOUND AT 1/4
 BET. SE'S 5-8 - LINE AND DISTANCE RUN UP FROM
 IRON Fd. AT 1/4 7-8 OUR CHAINING WAS 2780
 AND LINE FELL 100' EAST OF IRON - PUT FSLP
 ON 13" W. SPRUCE 344' SOUTH OF CORNER NORTH
 SIDE OF WOODS TRAIL NW-SE - PUT FSLP ON
 10" W. SPRUCE 420' WEST OF COR. ON EAST SIDE
 OF TRAIL N-S FROM SMALL CLEARING ALONG TRAIL
 SET 3" X 6' ASH POST BESIDE IRON PIPE AND PLACE
 FSLP ON 5" W. OAK N54W 15' FROM IRON

11-27-74

Curtin R. Kramer

Fd. ASH POST DOWN AND IRON PIPE IN PLACE
 IN WET SWP. - DISTANCES CHAINED AGAIN N-S-E
 -W AND ALL CHECK VERY CLOSE TO ROSES
 DISTANCES RECORDED IN NOTES

8-10-81

CK-68-58-TB

HEAVY BURN IN AREA HAS DESTROYED ANY EVIDENCE OF
 GOVT. B.T.S. - DISCOLORATION OF IRON PIPE
 INDICATES VERY HOT GROUND FIRE ALSO DEEP
 DEPRESSIONS IN SWP AREA OF BURNING TO NATURAL
 GROUND

Curtin R. Kramer

Line to standard North & East

QUARTER CORNER BETWEEN SEC'S. 5-6

NOTES OF ORIGINAL GOV'T SURVEY OF 1882

SET WOOD POST - FD. WOOD POST DOWN

IN 1921 J. ROSE

CEDAR 10 S48W 22 LKS. 14.5' 1981 CK
FD. BY ROSE IN 1921 STANDING - NO EVIDENCE FD.

CEDAR 24 N48E 16 LKS. 10.6' CK
FD. BY ROSE IN 1921 DOWN - NO EVIDENCE FD. 1981

NOTES BY JOHN J. ROSE R.L.S. 1921

FOLDER #5 PAGE 66

FOUND ORIG. POST DOWN - BT. TO SEC. 6 STANDING
AND BT TO SEC. 5 DOWN

SET 1" X 32" IRON PIPE - FOUND IRON PIPE IN PLACE
1' ABOVE GROUND

SET 2" DIA. X 5' LONG IRON PIPE WITH 3" CAP MARKED

RESET ROSE'S IRON PIPE T150N R26W

AT NORTH EDGE OF F.S. MONU.

1/4
56 | 55

WITNESSED BY

1981
R.L.S. NO

ASH 7 N41E 81.35' MKD. 1/4 55 BT

ASH 8 S69E 35.70' MKD. 1/4 55 BT

ASH 5 S17E 44.80' MKD. 1/4 55 BT.

BALM-GILEAD 8 S88W 21.35' MKD. 1/4 56 BT

SET 8' STEEL SIGN POSTS NORTH 4.1' AND

SOUTH 4.7' WITH BOTH SIGNS

8-8-81 Curtis R. Kramer

CHAINED TO THIS LOCATION FROM IRON PIPE AT
SECTION CORNER TO SOUTH - ROSE'S DISTANCE
2860' - OUR CHAIN 2842.0' LINE WAS RIGHT ON
IRON PIPE - NO EVIDENCE OF ORIG. BT. FOUND
AREA HAS BEEN BURNED VERY HEAVY YEARS AGO
MANY STUMPS AND LOGS ON GROUND AROUND CORNER
ALL SHOW SIGNS OF VERY HEAVY BURN AND MANY
LOGS WHERE FOUND BUT STUMP WHERE BURNED AWAY
CORNER IS AT WEST EDGE OF WET SWAMP AND HIGH
LAND TO WEST - WOODS TRAIL N-S IS APPROX. 294'
TO EAST OF CORNER - FSLD ON WEST SIDE OF TRAIL

8-5-81 68-78-58

Curtis R. Kramer

Line to standard North & South

34 A-5

SECTION CORNER TO SECTIONS 5-6

NOTES OF ORIG. GOV'T. SURVEY OF 1882

SET WOOD POST

ELM 10 S21W 16 LKS.

ROSE FD, STP. AND ROOTS OF BT-SET POST IN STUMP

ASPEN 24 S83E 30 LKS.

ROSE FD, STP. AND ROOTS OF BT-SET POST IN STUMP

NO EVIDENCE OF ORIG. BT'S. OR POSTS WHERE FOUND

NOTES BY JOHN J. ROSE RLS 1921

FOLDER # 2 PAGE 73

SET 1" X 36" IRON PIPE

FD. 1" X 36" IRON PIPE 8" ABOVE GROUND

SET 2" DIA. X 5' LONG IRON PIPE WITH 3" DIA. CAP MKD.

RESET ROSE'S IRON BESIDE TISON

F.S. MONU. S31

MONUMENTED BY GARY BRAMA

56 55
CC

TISON R26W

1981

RLS NO

WITNESSED BY

ASH 9 S84E 114.20' MKD. TISON R26W S56CC BT

SPRUCE 12 S84W 78.53' " TISON R26W S6CC BT

BALM-GILEAD 9 S56W 10.70' " TISON R26W S6CC BT

ASH 4 S19W 71.35' MKD. X BT

BALM-GILEAD 8 S22E 42.13' " S5 BT.

SET 8' STEEL POSTS SOUTH 5.0' AND EAST 5.0'

WITH BOTH SIGNS

8-13-81

Crista R. Krance

CC DONE

CERTIFICATE FILED

34

8-5-81 SB-SB-TB
 CHAINED N2E 2668.0' FROM 1/4 CORNER
 DISTANCE CHECKED OK WITH ROSE'S DISTANCE
 PLACE FSLP ON ASPEN 12 S66E 12.2' FROM IRON
 CORNER FALLS IN ASPEN STAND APPROX. 125'
 WEST OF A WET ALDER SWAMP

LINE TO STANDARD EAST AND SOUTH OF COR. 1981

SECTION CORNER TO SECTIONS 22-23-26-27

NOTES OF ORIG. GOVT. SURVEY 1882

SET WOOD POST

6/25/91 Krause & BRAMA

SPRUCE 8 S35E 25 LKS. 16.5'
 Fd rotted spruce stp at S35E at 18.35 ^{PART of "BT"} scribe showing. 600

SPRUCE 5 N31E 30 LKS. 19.8'
 Fd. well rotted spruce stp at N31E at 17.3' 600

SPRUCE 4 N12W 11 LKS. 7.3'
 Fd. no evidence.

SPRUCE 9 S54W 24 LKS. 15.8' 200

Fd. well rotted spruce stp + log at S54W at 15.8'

Fd no evidence of old post. Search a large area for post.

Set a 3"x3"x7' squared cedar post at bearings from old original BT's and distance from the S54W original BT.

MARKED NEW BT'S:

Spruce 6" S69E 25.75 MKD. S26 + BT 600 spikes

Spruce 8" S24W 22.60 S27 + BT "

Spruce 6" N64W 9.45' S22 + BT "

Spruce 6" N42E 27.50' S23 + BT "

Placed 200 galv. nails at base of post set.

6/25/91 Measured from south 1/4 of sec 22 at S88E and distance of 2700'. Line fell 66' south of corner. Found old blazes north and east of corner in black spruce swamp.

ITASCA COUNTY
MONUMENTED IN

1996

TOLD BY TIM WOTZKA
SUMMER 96

CK.

QUARTER CORNER BET. SEC'S, 23-26
NOTES OF ORIG. GOV'T. SURVEY 1882
SET WOOD POST

TAM. 10 N73E 100 WS. 66.0'

NO OTHER TREE NEAR

SECTION CORNER TO SECTIONS 23-24-25-26

NOTES OF ORIG. GOV'T. SURVEY 1882

SET WOOD POST

ASH 10 N46W 13 LKS. 8.6'

BIRCH 9 N31E 28 LKS. 18.5'

SPRUCE 9 S71W 40 LKS. 26.4'

ASH 8 S48E 35 LKS. 23.1'

QUARTER CORNER BET. SEC'S. 25-26
NOTES OF ORIG. GOV'T. SURVEY 1882
SET WOOD POST

BALM-GILEAD 9 S47W 25 LKS. 16.5'

BALM-GILEAD 15 S68E 37 LKS. 24.4'

SECTION CORNER TO SECTIONS 25-26-35-36

NOTES OF ORIG. GOVT. SURVEY 1882

SET WOOD POST

ASH 4 N53E 23 LKS. 15.2'

ASH 6 S57E 20 LKS. 13.2'

CEDAR 8 S37W 22 LKS. 14.5'

CEDAR 9 N30W 8 LKS. 5.3'

SEE BOOK #3 Pg. 5

QUARTER CORNER BET. SEC'S. 26-35
NOTES OF ORIG. GOV'T. SURVEY 1882
SET WOOD POST

ELM 4 S4W 4 LKS. 2.6'

ELM 8 N79E 14 LKS. 9.2'

SEE BOOK #3 Pg. 8

SECTION CORNER TO SECTIONS 26-27-34-35

NOTES OF ORIG. GOVT. SURVEY 1882

SET WOOD POST

SPRUCE 24 S38E 30 LKS. 19.8'

BALM-GILEAD 20 S59W 55 LKS. 36.3'

BALM-GILEAD 10 N69W 25 LKS. 16.5'

BALM-GILEAD 12 N17E 10 LKS. 6.6'

SEE BOOK #3 Pg. 7

QUARTER CORNER BET. SEC'S. 27-34

NOTES OF ORIG. GOVT. SURVEY 1882

SET WOOD POST

SPRUCE 3 N39E 4 LKS. 2.6'

SPRUCE 4 S49W 9 LKS. 5.9'

10/10/91 BEAMA

Measured 2640' from sec. cor 27, 28, 33, 34 at due east. Found no evidence of corner position.

Placed a FSLP. on 7" Blk spruce 5706

15' from approx 1/4 corner position.

Approx. corner position is 46' south of my line and old blazed line west. Another old blaze line is approx 50' further south. Original have swamp call 6 chs. east checks good to approx. corner. Many large black spruce wind falls in search area.

EAST RANDOM BET. 27+34

231'	3.50 CHS.	ENT. TAM. SWP. SE+NW
2640'	40.00 "	TEMP 1/4 COR.
376'	46.00 "	L.V. SWP NW-SE
858'	53.00 "	ENT. SPRUCE SWP NE-SW
	67.00 "	L.V. SPRUCE SWP. NW-SE
	80.00 "	SEC. COR.

QUARTER CORNER BET. SEC'S. 26-27
NOTES OF ORIG. GOV'T. SURVEY 1882
SET WOOD POST

TAM. 20 N54W 95 LKS. 62.7'

ASPEN 3 N12E 75 LKS. 49.5'

#4

QUARTER CORNER BET. SEC'S. 34-35
NOTES OF ORIG. GOV'T. SURVEY 1882
SET WOOD POST

TAM. 3 N50E 50 LKS. 33.0'

TAM. 4 S87W 35 LKS. 23.1'

CERTIFICATE FILED

44

SEE BOOK #3 Pg. 6

SECTION CORNER TO SECTIONS 2-3-34-35

NOTES OF ORIG. GOV'T. SURVEY 1882

SET J. PINE POST

J. PINE 13 N88E 28 LKS. 18.5'

J. PINE 7 N59W 13 LKS. 8.6'

J. PINE 12 S18E 22 LKS. 14.5'

J. PINE 12 S67W 30 LKS. 19.8'

SEE BOOK #3 Pg. 3 + 21

J-11

Offered 6/27/79

46
19

46 Quarter Corner Bet Sec's. 9-16

Notes of Orig. Gov't. survey 1882

Set wood post Fd. 4" x 4" x 48" Tam. post
in place - point very solid - mkd 1/4 S

Spruce 10 N30W 40 lks. = 26.4'

Fd. Spruce stump N30W 22.3' faint mark visible

Spruce 9 S30E 7 lks. = 4.6'

Fd. well rotted stump at brg. $\frac{1}{2}$ dist.To perpetuate this corner I set 2" dia. x 5' long
galvanized steel pipe, filled with concrete and
capped with 3" dia. brass tablet marked

T150N R26W

 $\frac{1}{4} \frac{59}{516}$

1975

Witnessed by

Blk. Spruce 7 S10W 83.4' mkd. 1/4 S16 BT

Ash 6 S21E 29.5' mkd. 1/4 S16 BT

Blk. Spruce 9 N82E 93.0' mkd. 1/4 S9 BT

Set 8' steel sign post due north 3.0' with FS signs 54-2 $\frac{1}{4}$ Set 8' steel sign post due east 3.4' with FS signs 54-2 $\frac{1}{4}$

4-4-75 Curtis R. Keane

2-9

Officer David 6/27/79

47

41 Quarter Corner Bet. Sec's. 16-17

Notes of Orig. Gov't. survey 1882

MKD 6" Cedar tree for corner post

Fd. down 6" Cedar mkd. for corner post blazed E-W

Cedar 6 N64W 16 lks. = 10.6'

Fd. Cedar N69W 10.6' with scribe visible 1/4 S

Cedar 15 N59E 15 lks. = 9.9'

Fd. stump and log chopped in pieces - no scribe

N58E 9.9'

To perpetuate this corner I set 2" dia. x 5' long
galvanized steel pipe, filled with concrete and
capped with 3" dia. brass tablet marked.

Reset iron pipe & both wood TISON R26W

posts beside FS. monument 1/4

drove 8' steel post beside monu. S17 S16

wired all together 1975

Witnessed by

Cedar 10 N52E 39.7' mkd. 1/4 S16 BT

Cedar 10 S67E 18.8' mkd. 1/4 S16 BT

Cedar 10 S50W 47.7' mkd. 1/4 S17 BT

Set 8' steel sign post due east 3.4' with FS sign 54-4

4-4-75 Curtis R. Krause

CORNER + TIG TREES - GOOD SHAPE

2-23-07

Jim Schorran

Fd. 1" ^{x30" long} iron pipe at corner location also square
wood post scribed and another post flat E-W

Put FSLP on west side of 10" Balsam on east
side of County Rd. # corner is 570' east

9-4-07 Re MAIN

GPS IRON

48
A-21 SECTION CORNER TO SECTIONS 142

ORIG NOTE OF 1882 BY KING

80.00 - SET POST - FROM WHICH:

20" 13" 20" 13"

TAM TAM CED CED

N25°E S69°E S21W N45W

501KS 451KS 401KS 501KS

*

*

* SCRIBE CHOPPED OUT BY MULLIGAN
IN RESURVEY OF 1898.

5/21/79 OLESEN, STEFAN & MRAUSE
PULLED DISTANCE WEST FROM SECTION
CORNER OF SECTION 35436.

FOUND ALL STUMPS TO MATCH
BEARING & DISTANCE BUT SPECIES
IN NE & SW QUADRANT REVERSED.
NO SCRIBING REMAINS.

WE SET POST FROM ABOVE BT
STUMP REMAINS.

49
A-23 N¹/₄ TO SECTION 1
ORIGINAL SURVEY OF 1892 BY KING
40.00 SET ¹/₄ POST FROM WHICH
12" 9"
CED. CED.
S39°E N39°W
20 IN'S 10 IN'S
13.2' 6.6'

5/7/79 STEFAN, KRAUSE & OLSEN
FOUND BOTH BEARING TREES ALIVE
& IN EXCELLENT CONDITION.

DISTANCE BETWEEN THESE BEARING
TREES IS 13.2' FACE TO FACE. AN
ERROR IN RECORDING OR TRANSFER
HAS DEFINITELY TAKEN PLACE HERE.
WE THEREFORE SET A POST AT
CORNER POSITION.

MES

11/4/80 B. Olson, M. Harrison

Fd. 2 original B.T.'s from position above:

12" Cedar S43°E 9.07'

8" Cedar N43°W 4.53'

~~M. Harrison~~ by W. Olson 11/4/80
MES

49
11/4/80 Set a 2 1/2" x 5" Alum. Man. MKD:

from which bears:

12" Ash S58°E 42.91' ^{old:} 1/4 51 BT

6" Ash S22°W 20.90' 1/4 51 BT

10" Cedar S18°E 13.76' 1/4 51 BT

Steel Sign Post 4.2' West.

Entered in this book by MES 1/29/81

1964

CORNER FOUND BY LYLE WOOD RLS FROM INT. FALLS

Fd. BOTH ORIG. BT'S

SET IRON & CAPPED MONUMENT

ORIG. W. PINE 10 NSW 6.60'

ORIG. W. PINE 10 N40E 15.20'

MKD NEW BT'S.

BALSAM 6 N8E 9.50'

BALSAM 5 N41E 11.00'



T150N R26W S1 N1/4 COR

Set 2 1/2" x 5' Alum. Mon. MKD:

MON UP 1.5' IN WET AREA.

FD. 2 ORIG. BT'S with scribing

visible:

(Dead) 12" Cedar S43°E 9.07' MKD:

(Dead) 8" Cedar N43°W 4.53' MKD:

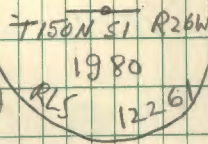
TOOK 3 New BT'S =

12" ASH S58°E 42.91' MKD: 1/4 51 BT

6" ASH S22°W 20.90' MKD: 1/4 51 BT

10" Cedar S18°E 13.76' MKD: 1/4 51 BT

Set Steel Sign Post 4.2' WEST in FS. 54-9



1/4 80 Set a 2 1/2" x 5' Alum Mon. MKD:

from which bears:

12" Ash S58°E 42.91' MKD: 1/4 51 BT

6" Ash S22°W 20.90' MKD: 1/4 51 BT

10" Cedar S18°E 13.76' MKD: 1/4 51 BT

Steel Sign Post 4.2' West.

Entered in this book by MMEZ 1/29/81

1964

CORNER FOUND BY LYLE WOOD RLS FROM INT. FALLS

FD. BOTH ORIG. BT'S

SET IRON + CAPPED MONUMENT

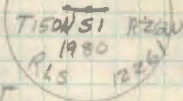
ORIG. W. PINE 10 NSW 6.60'

ORIG. W. PINE 10 N40E 15.20'

MKD NEW BT'S.

BALSAM 6 N8E 9.50'

BALSAM 5 N41E 11.00'

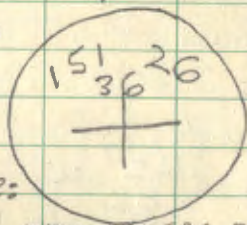


T151N R26W S1/4 Cor Sec 36

FD. KOOCHICHING CO. MON MKD:

1 1/2" I.P. w. 3" ~~BRASS~~ Alum. Cap

MON. UP 2.5'



FD. 2 BT'S w. scribe vs sibe:

6" Balsam N43°E 11.00' MKD: 1/4 S36 BT

8" Balsam N10°E 9.31' MKD: 1/4 S36 BT

TOOK 1 New BT:

7" ASH N62°W 37.12' MKD: 1/4 S36 BT

Set Steel Post 4.0' WEST w. F.S. 54-9.

No. 302

WEATHERPROOF

J. L. BARLING CORP.
MUSKOGEE, ALA. U.S.A.

11/180 Set a 2 1/2" x 5" Alum. Mon. MKD:

from which bears:

12" Ash S58°E 42.91' MKD: 1/4 S1 BT

6" Ash S22°W 20.90' MKD: 1/4 S1 BT

10" Cedar S18°E 13.76' MKD: 1/4 S1 BT

Steel Sign Post 4.2' West.

Entered in this book by MEZ. 1/29/51

1964

CORNER FOUND BY LYLE WOOD RLS FROM INT. FALLS

FD. BOTH ORIG. BT'S

SET IRON + CAPPED MONUMENT

ORIG. W. PINE 10 NSW 6.60'

ORIG. W. PINE 10 N40E 15.20'

MKD NEW BT'S.

BALSAM 6 N8E 9.50'

BALSAM 5 N41E 11.00'

T151N R26W
1980
RLS 1226

NORTH QUARTER TO SEC. 6

NOTES OF ORIG. GOV'T. SURVEY OF 1882

SET WOOD POST

TAM. 14 N16E 20 LKS.

J. ROSE Fd. EVIDENCE 1920 Fd. STP. AT BRG. ? DIST ^{1981 CK}

TAM. 8 S53W 7 LKS.

J. ROSE Fd. EVIDENCE 1921 Fd. STP. AT BRG. ? DIST ^{1981 CK}

NOTES OF J. J. ROSE 1921 - FOLDER #5 PAGE 68

Fd. BOTH GOV'T. BT'S. - POST WAS GONE

SET 1" X 36" IRON PIPE

Fd. 1" X 36" IRON PIPE 10" ABOVE WATER - BEAVERS
HAVE DAM TO WEST OF COR. AND ARE BACKING UP
WATER THAT HAS FLOODED CORNER LOCATION

8-11-81 CK - SB - TB

CHAINED FROM SEC. COR. 5-6 WEST 2658'
THEN NORTH 30' TO IRON PIPE - Fd. EVIDENCE
OF BOTH ORIG. BT'S. - ROSE'S DISTANCE WAS
2660.7'
PUT FSLP ON 6" ASH N40E 9.9' FROM IRON
WOODS TRAIL N-S XS APPROX. 500' E OF COR.
FSLP ON 9" BIRCH ON EAST SIDE OF TRAIL

Curtis R. Kramer

SET 2" DIA X 5' LONG IRON PIPE WITH 3" CAP MKD.

RESET ROSE'S IRON BESIDE TISON R26W
FS. MONU.

N 1/4 56

1981

RLS - NO

WITNESSED BY

ASH 5 S88W 13.95' MKD 1/4 56 BT

ASH 6 S60W 44.80' " 1/4 56 BT

ASH 8 S10W 15.85' " 1/4 56 BT

ASH 7 S48E 41.25' " 1/4 56 BT

ASH 8 S84E 44.95' " 1/4 56 BT

SET 8' STEEL POST 1.4 NORTH WITH 54-9

8-11-81

Curtis R. Kramer

QUARTER CORNER BETWEEN SEC'S. 6-7

NOTES OF ORIG. GOVT. SURVEY OF 1882

SET WOOD POST NO EVIDENCE OF POST FOUND

BY JOHN ROSE 1921

BIRCH 12 N62W 30 LKS. 19.8'

NO EVIDENCE FOUND BY J. ROSE

SPRUCE 12 S7W. 25 LKS. 16.5'

NO EVIDENCE FOUND BY ROSE

NOTES BY JOHN J. ROSE RLS 1921

FOLDER #1 PAGE 15

CORNER REESTABLISHED BY PROPORTIONAL

DISTANCE BETWEEN SECTION CORNERS

SET CEDAR POST AND 1" X 3/4" IRON PIPE 1980

FD. SCRIBED POST AND IRON PIPE IN PLACE CK

MKD NEW BT'S.

CEDAR 10 N53°30'W 19.0'

NOW CEDAR 12 N6W 19.0' WINDFALL MKD. 1/4 S

CEDAR 8 S67E 8.0'

NOW CEDAR 12 S56E 7.3' MKD. 1/4 S

CHAINED ON OLD OPEN LINE IN CEDAR SWAMP
FROM W'116 6-7 1395' TO CEDAR POST AND
IRON PIPE FOUND MARKING 1/4 COR. - LINE RUNS
AT S87°E - CORNER IS JUST IN LOWLAND SWP.
FROM EAST HIGHLAND APPROX. 35'
WOODS TRAIL N-S IS APPROX. 500' EAST OF COR.
CUT NW BT OF ROSES OFF STUMP AND ROLL LOG
OVER TO EXPOSE SCRIBE ON CEDAR - STUMP
STILL IN PLACE - SE BT HAS SOME ROTTEN
FACE AT SCRIBE, BUT MARKS ARE VISIBLE

10-25-80 CK-JW-TB

Chas. R. Krieger

SET 2" DIA. X 5' LONG IRON PIPE WITH 3" DIA. CAP MKD.

RESET WOODPOST AND IRON
BESIDE F.S. MONU.

T15ON R26W

1/4 56

1/4 57

1981

RLS NO

WITNESSED BY

CEDAR 7 N34E 42.15' MKD. 1/4 S6 BT

HSH 6 N85E 16.60' MKD. 1/4 S6 BT

CEDAR 14 S18E 41.70' MKD. 1/4 S7 BT

CEDAR 10 S85W 38.00 MKD. 1/4 S7 BT

SET 8' STEEL POST 4.65' WEST WITH 54-9

8-11-81

Chas. R. Krieger

NORTH QUARTER CORNER TO SEC. 5
 NOTES OF ORIG. GOVT. SURVEY OF 1882

SET WOOD POST J. ROSE FOUND POST
 IN 1920

CEDAR 10 S53W 6 LKS. 4.0'

Fd. CEDAR WINDFALL SCRIBED 1/4S INSIDE SCAR

ELM 6 N53E 3 LKS. 2.0'

NO EVIDENCE FOUND

NOTES BY JOHN ROSE RLS 1920 FOLDER 2 PAGE 65

Fd. BOTH GOVT. BT'S. AND POST

ELM 8 N45E 1.0'
MAG.

NO EVIDENCE OF ELM STUMP REMAINS

CEDAR 16 S45W 3.0'
MAG.

NOW CEDAR WINDFALL S53W 4.0' SCRIBE 1/4S INSIDE VISIBLE

SET NEW CEDAR POST 4" X 4" X 98" MKD. 1/4S5

TISON R26W Fd. ROSE'S POST BADLY BURNED
 WITH 2 FLAT SIDES NO SCRIBE ON POST

CHAINED TO THIS CORNER FROM SEC. COR. TO WEST
 RAN LINE AT TRUE EAST FROM SEC. COR. AND
 FELL 113.0' NORTH OF W416 IRON PIPE - WE TRY
 TO CORRECT LINE TO 1/4 COR. SEC. 5 BY RUNNING
 LINE AT S85E AND THEN AT 1/4 SEC. 5 WE FELL
 35' SOUTH OF N1/4 SEC 5 - DISTANCES FOR W416
 AND N1/4 COR'S. CHECK VERY CLOSE TO ROSE'S
 DISTANCE
 PUT FSLP ON 4" ASH N2E 3' FROM COR.

8-7-81 CK-68-TB

Curtis R. Krause

SET 2" DIA. X 5' LONG IRON PIPE WITH 3" DIA CAP MKD.

N1/4S5
 TISON R26W
 1981

RLS NO

WITNESSED BY

ASH 4 S84E 40.95' NAIL ON SOUTH SIDE

ELM 7 S18E 37.70' MKD 1/4S5 BT

ASH 7 S25W 102.80' MKD 1/4S5 BT

ASH 6 S81W 46.35' MKD 1/4S5 BT

SIGN POSTS TO BE SET LATER

8-14-81

Curtis R. Krause

QUARTER CORNER BET. SEC'S. 5-8
 NOTES OF ORIG. GOVT. SURVEY OF 1882
 SET WOOD POST

FIR 4 N34W 10LKS. 61.6'

FIR 4 S52W 33LKS. 21.8'

NOTES BY JOHN J. ROSE RLS 1920
 FOLDER #3 PAGE 78 - Fd. MARKS TO INDICATE
 CORNER POSITION AT THIS LOCATION

SET NEW CEDAR POST 5" X 6" X 4'
 FOLDER #2 PAGE 65 - SET 1" X 3/8" IRON PIPE

Fd. IRON PIPE 10" ABOVE GROUND

CORNER IN ASPEN - BALSAM - SPRUCE - BIRCH

CROSS WOODS TRAIL SE-NW 500' W OF 1/4 COR.

BLAZED 8" ASPEN ETW AT TRAIL

CHAINED FROM BOTH SEC. COR'S. EAST AND WEST 2663'
 APPEARS 1/4 COR. WAS SET MIDPOINT ON STRAIGHT LINE
 DISTANCES CHECKED VERY GOOD
 PUT FSLPON 10" ASPEN N19W-17.1' FROM IRON - BLAZED
 6" ASPEN 4 SIDES 4' SE OF IRON
 SET 3" OAK POST BESIDE IRON PIPE

11-29-74

Curt R. Krause

CHAINED NORTH AND SOUTH ALSO AND THESE DISTANCES
 CHECKED CLOSE TO ROSE'S NOTES

7-23-81

CK-6B-JA

SET 2" X 5' IRON PIPE WITH 3" DIA. CAP MKD.
 TISON R26W
 1/4 55
 58

WITNESSED BY

1981
 RLS NO

ASPEN 7 S35E 54.60' MKD. 1/4 58 BT
 ASPEN 7 S8W 51.30' MKD. 1/4 58 BT
 W. SPRUCE 12 N84E 71.60 MKD 1/4 55 BT
 FISH 6 N25W 85.35' MKD. 1/4 55 BT
 W. OAK 3 N68E 21.55' NAIL ON S SIDE
 FISH 4 S603W 82.15' MKD. 1/4 58 BT
 8" STEEL POST NORTH 2.2' W/ 54-9

8-12-82

Curt R. Krause

SECTION CORNER TO SECTIONS 4-5
NOTES OF ORIG. GOV'T. SURVEY OF 1882

SET WOOD POST

CEDAR 12 S49W 33 LKS. 21.8'

FD. CEDAR STP. AT BEARING BUT DISTANCE WAS 16'

CEDAR 13 S12E 15 LKS. 9.9'

FD. CEDAR WINDFALL BURNED WITH FLAT AREA FACING POST

CEDAR 5 N20W 10 LKS. 6.16'

FD. CEDAR WINDFALL BURNED BUT HAD FLAT FACE TO POST

TAMU 9 N49E 30 LKS. 19.8'

NO EVIDENCE FOUND ON HIGHLAND PROBABLY BURNED UP

SET 2" DIA. X 5' LONG IRON PIPE WITH BRASS CAP MKD.

RESET ROSE'S IRON BESIDE

F.S. MONU.

T15IN
532
55 54
CC
T15ON R26W
1981

RIS NO

MKD

BALM-GILEAD 9 S69E 36.65' T15ON R26W S400CBT

BALM-GILEAD 6 S34E 11.80' T15ON R26W S400CBT

BALM-GILEAD 10 S32W 37.13' T15ON R26W S500CBT

BALM-GILEAD 7 S49W 56.95' T15ON R26W S500CBT

8-28-81

Curt R. Krause

CHAINED TO THIS LOCATION FROM IRON PIPE FOUND (1974)
AT SEC. COR. 4-5-8-9 - CHAINED 5280' AND FELL
EAST OF POST 75' RAN LINE AT N2°E (1974)
FD. SCRIBED - BURNED - AND PARTLY ROTTED CEDAR
POST ON GROUND WITH BASE IN PLACE - SET NEW
CEDAR POST 3" SQ. X 6' HIGH BESIDE OLD POST
AND PLACE FSLP ON 5" ASH N82E 5.0' FROM COR.

12-2-74

Curt R. Krause

IRON PIPE AT 1/4 BET. SEC'S. 4-5 NOT FOUND OR HAD
NO KNOWLEDGE OF THIS BEING SET IN 1974 - OUR
APPROX. POSITION AT 1/4 4-5 WAS 100' E OF IRON WHEN
FD. IN 1981 AT 1/4 4-5 POSITION

RECHAIN AND RAN LINE FROM IRON FD. AT 1/4 4-5
IN 1981. - LINE RUN AT TRUE NORTH AND CHAINED
2636' OUR LINE FELL 190' WEST OF COR. LOCATION
LINE SHOULD BE RUN AT N3°E NEXT TIME.

IN 1974 WE RAN LINE WEST FROM THIS SEC. COR. TO
N 1/4 SEC. 5 BUT DUE TO LATE HOUR OF THAT DAY WE
DIDN'T HAVE ENOUGH TIME TO SEARCH FOR N 1/4 S5
AND WE NEVER WENT BACK AGAIN TO CHECK.

IN 1981 WHEN WE FOUND N 1/4 SEC. 5 WE SEARCH OUT
AND FOUND AN ASH 4" I BLAZED ON END OF OUR LINE
IN 1974 WHERE WE QUIT THAT DAY. THIS ASH FELL
APPROX. 40' SOUTH OF ORIG. EVIDENCE FD. AT N 1/4-5
SO DISTANCE WOULD BE VERY CLOSE TO 2640' FROM
THE ABOVE SEC. COR.

WE ALSO CHAINED EAST FROM THIS CORNER TO N 1/4
OF SEC. 4

QUARTER CORNER BET. SEC'S. 4-5

NOTES OF ORIG. GOV'T. SURVEY DA. 1882

SET WOOD POST J.J. ROSE RLS 1920

FD. GOV'T. POST IN PLACE

CEDAR 18 N37E 40 LKS. 26.4'

FD. EVIDENCE OF BT 1920

ASH 12 S27W 30 LKS. 19.8'

FD. EVIDENCE OF BT 1920

NOTES BY J.J. ROSE RLS 1920

FD. GOV'T. POST AND BOTH BTS. - SET 1" X 36" IRON

PIPE - 2665' NORTH OF SECTION COR. 4-5-8-9

FD. IRON 1" X 36" LYING IN SWP IN PLACE WITH

ORIG. GOV'T. BT CEDAR N37E 26.4'

CC DONE **CERTIFICATE FILED**

CHAINED NORTH OF SEC. COR. 4-5-8-9 2665 RS PER
CALL IN ROSE'S NOTES. FD. 1" X 36" IRON PIPE LYING IN
SWP. - MEASURED DISTANCES EAST TO C/4 SEC. 9
THIS CHECK GOOD THEN CHAINED WEST TO C/4 SEC. 5
THIS DISTANCE AGREED WITH ROSE'S NOTES
CHAINED NORTH TO SEC. COR. 4-5 2636' AND DIST.
ANCE WAS MEASURED TO ORIG. EVIDENCE AT SEC. COR.
140' EAST OF END OF OUR LINE RUN AT ONE NORTH
FD. EVIDENCE OF ORIG. CEDAR - LOG AND STUMP - ROTTED
AND BURNED AT BRG. AND DIST. - ASH BT IS GONE

8-24-81 CURT KRANS

SET 2" DIA. X 5' LONG IRON PIPE WITH 3" DIA.

BRASS CAP MARKED

TISON R26W

1/4

55 | 54

1981

RLS NO

ASH 7 N73E 44.3' MKD 1/4 S4 BT

ASH 6 S63E 45.95' MKD 1/4 S4 BT

ASH 9 S29W 98.65' MKD 1/4 S5 BT

ASH 6 N54W 79.55' MKD 1/4 S5 BT

8' STEEL POST EAST 5.0'

8-28-81

Curt R. Keane

SECTION CORNER TO SECTIONS 4-5-8-9

NOTES OF ORIG. GOVT. SURVEY OF 1882

SET WOOD POST

BIRCH 10 N52W 12 LKS. 7.9'

J.J. ROSE 1920 Fd. ROOTS

BIRCH 8 N39E 25 LKS. 16.5'

J.J. ROSE 1920 Fd. STUB

CEDAR 14 S79E 45 LKS. 29.7'

DOUBTFUL

CEDAR 8 SIZE 25 LKS. 16.5'

NO TRACE

NOTES BY JOHN J. ROSE 1920

POST GONE - FOUND TRACES OF 2 BT'S.

SET NEW CEDAR POST 4"X4"X4' AND 1"X36" IRON PIPE

Fd. 1"X36" IRON PIPE IN PLACE - NO EVIDENCE

OF ANY BT'S REMAINS 1974 CK

CERTIFICATE FILED

CHAINED NORTH FROM 1/4 BET. 8-9 - 2885'
 CHAINED WEST TO 1/4 - 5-8 2663'
 IRON CHECKS GOOD WITH ROSE'S NOTES
 PUT FSLP ON 10 ASPEN SIZE 25.0'
 FSLP ON 10" BALM-GILEAD ON EAST SIDE OF WOOD
 TRAIL NW-SE - 424' WEST OF SEC. COR.

1974-1981
 CK-6B-JA

SET 2"X5' LONG IRON PIPE WITH 3" BRASS CAP MKD.

TISON R26W

55 | 54

58 | 59

1981

RLS NO

ASH 4 N18E 119.0' MKD 54 BT

SPRUCE 4 N19E 47.95' MKD 54 BT

MAPLE 7 N62E 68.35' 54 BT

W. OAK 4 S38E 35.55' 58 BT

ASH 7 S65W 80.85' TISON R26W 58 BT

ASPEN 8 N69W 37.20' TISON R26W 55 BT

SET 8' STEEL POST ONE WEST 4.0' } 2 AWAY BY
 " " " East 4.9' } signs

8-18-81

certified by Gary Stevenson *Chris R. Klown*

QUARTER CORNER BET. SEC'S. 4-9
 NOTES OF ORIG. GOV'T. SURVEY 1882
 SET WOOD POST.

SPRUCE 10 N15W 15 LKS. 9.9'

SPRUCE 9 S15E 15 LKS. 9.9'

NOTES OF J. ROSE RLS 1920 Folder #2 p30

Fd: old post point and both
 BTS down

SET: 1" x 36" iron pipe and wood post

BTS: Oak stub 10" N57W 59.0'

Pop. stub 24" S04E 52.0'

9/25/81 JA TO GE

Fd: 1" x 36" iron pipe up 4"

no sign of BTS - chained south
 from CS 1/4 1318' - dist checks good

SET: 5' Brass Capped Iron pipe ^{marked}
 up 2' in place of iron pipe T150N R26W
 54

which is now on north side 1/4'
 of B.C. flush with surface ⁵⁹
 RES NO 1981

BTS:

Birch	7"	N46W	34.14	} Bluff & scribe saks tops rearing
B. of Gil	8"	S06E	19.36	
Ash (trunk)	7"	N22E	35.53	x 1st" saks red ring

Steel sign post 3" x 8" WEST 4.31'

" " NORTH 5.25'

Line to standard West and North

QUARTER CORNER BET. SEC'S. 8-9

NOTES OF ORIG. GOV'T. SURVEY 1882

SET WOOD POST

FISH 10 S29E 6 LKS. 4.0'

ROSE Fd. STANDING

FIR 7 S29W 12 LKS. 7.9'

ROSE Fd. DOWN

NOTES BY JOHN J. ROSE 1920

FOLDER 3 PAGES 64+77

SET 4" X 5" X 4' OAK POST

9/1/81 CK-GB-TB

CHAINED NORTH FROM SEC. COR. 8-9-16-17

2654.6' Fd. 4" X 5" X 24" HIGH OAK POST

NEXT TO FENCE CORNER POST

ALSO CHAINED TO WEST 1315' ROSES DISTANCE

THEY CHECK WITHIN 1.0'

FENCE LINE SOUTH + WEST - (BOTH IN BAD SHAPE)

9/10/81

SET 2" X 5' LONG GALVANIZED STEEL PIPE
WITH BRASS CAP MARKED

TISON R26W

1/4

S8 | S9

1981

RLS NO

WITNESSED BY

ASPEN 6 N1W-20.48' MKD 1/4 S8 BT

OAK 5 N67E-68.48' " 1/4 S9 BT

OAK 6 S67E-58.94' 1/4 S9 BT

OAK 5 S11W-17.77' 1/4 S8 BT

8' STEEL SIGN POST WEST 5.15'

QUARTER BET. SEC'S. 9-10

NOTES OF ORIG. GOVT. SURVEY 1882

SET. WOOD POST

BALM-GILEAD 10 N72E 4 LKS. 216'

gone

CEDAR 5 S72W 4 LKS. 216'

gone

Notes by J. ROSE 1920 RLS Folder #3p. 65

Fd: Both BTS down

Set: 1" x 36" Iron Pipe and NEW
Cedar Post 4" x 6" x 5'

Ad

10/29/80 CK JW TB

chained South from N¹/₁₆ Rose's dist.

OK. Then ran East to W¹/₁₆ sec 10 - dist. good

Fd: 1" x 36" iron pipe on slight ridge

No evidence of BTS - many burned cedars

9/02/81 JA JO GE

Fd: iron pipe 1" x 30" tied out to set B.C.

Set: 5' Brass Capped Iron pipe marked
up 2' with gas pipe 1" x 30" on
North side of B.C. flush

7150 N R 26 W
114
59 510
1981
RLS NO

SET BTS:

Elm 11" S30W 59.92'

Ash 5" S68W 67.65'

Ash 5" N48W 35.56'

B. of Gil 7" N27E 39.74'

B. of Gil 13" N68W 5.6' CLT

Steel sign post 3" x 8' WEST 5.0' Att #13 dry

Corner is just east of edge of swp. N-S
red paint

60

SECTION CORNER TO SECTIONS 3-4-9-10
 NOTES OF ORIG. GOV'T. SURVEY 1882
 SET WOOD POST

MAPLE 6 S34W 40 LKS. 26.4'

ASPEN 20 S74E 40 LKS. 26.4'

ASPEN. 20 N42W 38 LKS. 25.1'

MAPLE 8 N17E 44 LKS. 29.0'

NOTES OF J. ROSE RLS 1921 Folder #2 p. 29

This corner is lost - area has been cleared
 by logging reset corner by double proportional
 method.

SET: 1" x 36" iron pipe

6/24/80 CK JS

FD: 1" x 36" iron pipe bent in road 8"
 down - base in place
 chained to sec cor from N¹/₁₆ 9 & 10
 1335'

Tempties:

Power pole	8"	N59W	43.21	Spk	FSLP
Aspen	11"	S32W	151.32	Spk	tag
Aspen	11"	S83W	125.90	Spk	tag
USGS	△ BM	N62W	42.03		monument

CC DONE

CERTIFICATE FILED

60

9/1/81 JA

SET: 2' Brass Capped Iron Pipe
 down 8" with 1" x 30" gas pipe on
 north side of B.C. down 9"

marked
 TISON R2CW
 54 53
 59 510
 1981
 RLS NO

BTS:

Steel sign post 3" x 8' N45W 46.09'

Steel sign post 3" x 8' S45W 46.09'

Steel sign post 3" x 8' N45E 46.09'

Steel sign post 3" x 8' S45E 46.09'

} All signs
 painted red

Corner is in q of road N & S

(Certificate filed)
 (83)

7/27/93 RM-CK

IRON PIPE AND BRASS CAP (IN PLACE) 6" BELOW ROAD

ASPEN TIE TO S83W - 125.90' DEAD SNAG NOW

SIGN POSTS OK - BENCHMARK OK

6/9/2011 R. MAIN

GPS IRON SIGN POSTS AND POWER POLE ARE OK

SOUTH 1/16 CORNER BET. SEC'S. 3-4

NOTES BY JOHN J. ROSE 1920

FOLDER #2 PAGE 38

SET 1" X 36" IRON PIPE

MARKED NEW BT

CEDAR 6 S12W 16.5'

6/24/80 CK-JS-TB

CHAINED NORTH FROM IRON FOUND AT SEC. COR.

1336' Fd. 1" X 36" IRON PIPE 24" BELOW COUNTY

ROAD #27 - Fd. OLD WOOD POST ON TOP OF IRON

JUST BELOW ROAD - NO TRACE OF OF CEDAR

AS DISTANCE FALLS IN ROAD

TIES TO IRON

ASPEN 12 S87W 69.4'

POWER POLE 8 N31W 66.46'

ASH 5 S61E 61.58'

CORNER IS IN CENTER OF COUNTY ROAD

16' NORTH OF 15" CMP UNDER COUNTY ROAD

8/31/81 JA

SET 2" X 24" IRON PIPE 8" BELOW COUNTY
ROAD WITH BRASS CAP MARKED

TISON R26W

S1/16

S4 | S3

1981

RLS NO

WITNESSED BY

ASH 5 N34E - 72.62' MKD S1/16 S3BT

ASH 5 S78E - 60.45' " " " "

ASH 5 S62E - 61.58' " " " "

ASPEN 13 S88W - 69.27' " " S4BT

8' STEEL SIGN POST WEST 33.0'

7/27/93 RM-CK

Fd. IRON + CAP - IN PLACE - CAP 1" BELOW SURFACE

DROVE CAP DOWN TO BE 8" BELOW SURFACE TODAY

BT'S. OK - ASPEN S88W IS PARTIAL DEAD (TOP)

MAY HAVE TO CHECK MORE OFTEN AS CORNER IS

IN SWAMP FILL

NORTH 1/16 CORNER BET. SEC'S. 9-10

Notes of J. Rose RLS 1920 Fokler 3 p. 94

Set: 1" x 36" Iron pipe

BTS Tam. 8" N 55W 15.0

Tam. 6" N 71E 6.0

10/29/80 CK JW BT

Chained North 1335' and South 1335'

Fd: Old squared post and 1" x 36" iron

BT Tam. stp. N 48W 15.0' rotted stp.

Tam. stp. N 79E 6.0' no scribe

Fence corner at corner in swamp

9/2/81 JA JO GE

Fd: gas pipe up 6" tied out to set BC.

Set: 5' Brass Capped Iron pipe up 1' ^{marked} T150N126Wwith gas pipe 1" x 36" on north side of BC ^{N 1/2} 59-3101981
Res No

BTS:

Ash	4"	S 41E	20.18'	} played & scribed tags spks red ring
Cedar	11"	S 20W	34.82'	
Cedar	11"	S 74W	26.96'	
Cedar	10"	N 74W	42.60'	

Corner at North edge of swamp E-W low wet

Road North approx 295' running North

CLOSING CORNER BET. SEC'S. 3-4

NOTES OF ORIG. GOV'T. SURVEY 1882

SET WOOD POST

CEDAR	10	S79W	42 LKS.	27.7'
TAM.	18"	N61E	23 LKS	15.2'
TAM.	12	S23E	38 LKS.	25.1'
CEDAR	12	N29W	30 LKS	19.8'

NOTES of J. ROSE RLS 1921 Folder # 2 p. 32 & 34

SET: 1" x 36" iron pipe from original BTS

6/24/80 CK JS Chained from N¹/₄ sec 4 2734'
 Chained North from S¹/₁₆ sec 3 & 4 1336'
 1/4 taken out cont. North 1333' N¹/₄
 taken out cont. North 1333' Fd
 Fd: 1" x 36" iron pipe in place -

BTS: Original

burned & rotted	Tam. stump	S23E	25.1
	Cedar stump	S79W	27.7'

1980-81 Itasca County Survey Dept (do not have corner information)
 Fd corner

SET BTS: (bearing and distances are what we fd. in 1981)

Ash	5"	N21W	26.9	S33 BT
Ash	5"	N84E	24.33	S34 BT
Ash	7"	S96W	40.47	S4 BT
Ash	5"	N09E	35.85	S34 BT

8/31/81 CK GB JP

Fd: 1" x 36" iron pipe set in place - Roses
 wood post laying by iron - Fd the two original
 bearing trees as recorded in 1980, also Fd
 the two original bearing trees that the scribe
 was chopped off - because of the disagreement
 along the Township line by the original surveyor
 with the Township to the North. He set up double
 corners along this line - not accepting the township
 to the South's line and establishing his own base line

BTS:

Tam roots N61E. 15.2'
 Cedar stump N29W 19.8'

Fd: Itasca County BTS:

Ash	5"	N21W	26.9'	} Blazed & scribed sps painted orange
Ash	7"	S76W	40.47	
Ash	5"	N84E	24.33	
Ash	5"	N09E	35.85	

9/1/81 JA CK GB

SET: 5' Brass Capped Iron pipe up 1' in place of gas pipe
 reset gas pipe on North side of B.C. marked
 (1" x 30")

BTS:

Ash	7"	S50E	51.12'	} Blazed and scribed TISON R26W sps tags red ring RLS NO
Ash	6"	S81E	69.05'	
Ash	7"	S78W	84.0'	
Ash	6"	S60W	78.64'	

Corner falls in Ash swale wet brushy - Rd SE
 Appt 150'

NORTH QUARTER CORNER TO SECTION 4

NOTES OF ORIG. GOVT. SURVEY OF 1882

SET WOOD POST - J. J. ROSE 1920

FD. FRAGMENTS OF ORIG. POST

CEDAR 10 S23E 8 LKS. 5.3'

J. J. ROSE 1920 FD. STUMP OF BT

CEDAR 12 N23W 10 LKS. 6.6'

J. J. ROSE 1920 FD. STUMP OF BT

NOTES BY J. J. ROSE RLS 1920 FOLDER #2 PAGE 33

FD. EVIDENCE OF ORIG. POST AND STUMPS

OF BTS. - SET 1" X 36" IRON PIPE

AND NEW WOOD POST

FD. 1" X 36" IRON PIPE AND WOOD POST LYING ON GROUND

FD. EVIDENCE OF BOTH ORIG. BTS.

CHAINED N10W FROM C¹/₄ AND CN¹/₁₆ SEC. 4 - 2600'
DISTANCE CHECKED WITH ROSE'S DISTANCE

PUT FSLP ON 5' ASH S82W 4.0' FROM IRON
CHAINED EAST 2734' THIS AGREES WITH ROSE'S
DISTANCE
CORNER IN ASH SWAMP

GB

SET 2" DIA. X 5' LONG IRON PIPE WITH 3" BRASS CAP MKD.

RESET IRON AND WOOD POST
BESIDE F.S. MONU.

TISON

N¹/₄ S4

TISON R26W

1981

RLS NO

ASH 7 S89E 37.20' MKD. ¹/₄ S4 BT

ASH 6 S46E 8.90' MKD. ¹/₄ S4 BT

ASH 10 S21W 51.40' MKD. ¹/₄ S4 BT

ASH 5 S53W 41.60' MKD. ¹/₄ S4 BT

8-27-81

G.B.

CENTER QUARTER OF SECTION 4

C-11

Notes of J.J. Rose in 1920 (Folder #2)
(Page 37)

Set a 1" x 36" galv. iron pipe from which:

TAM. 12" N22°W 67 ft

CEDAR 12" N86°E 34 ft

TAM. 4" S90°W 21 ft

CEDAR 16" S64°E 34 ft?

8-20-81 G. Brama, T. Bender & S. Becktal

Fd. Rose's iron pipe setting 1.0' above
grd. in place. Also fd. a 4' long sq. post
laying alongside iron. Fd. remains of the
following B.T.'s:

TAM. rotted stp. N14°W 67'

Cedar burned snag S86°E 34'

TAM. rotted & burned stp. N80°W 21'

Cedar burned snag S58°E 27'

8-20-81 G. Brama, T. Bender & S. Becktal

Set a 2" x 60" galv., concrete filled iron pipe
in place at Rose's iron. Set 3' in grd. Replaced
Rose's iron on south side of new pipe. Put wood
post on west side. Took the following new B.T.'s

Ash 5" N30°E 48.63' mkl CK154 BT

Ash 5" S75°E 22.50' " CK154 BT

Ash 6" S40°W 88.35' " CK154 BT

steel sign post south 3.0' w/atten. sign

T150N A226W

CK4

0 5.4 C

1901

RLS NO.

8-20-81 Brama

Placed FSLP on Ash 5" S75°E 22.50'. Corner falls
in a small grassy marsh with some alders growing near corner.
30 ft east of corner is high ground (Purple). Changed from 4 1/2
sec. 4, 1390' at bearing of S00°E. Fd. I.P. 25' north of
line at correct distance.

SOUTHWEST 1/16 CORNER TO SECTION 4

NOTES BY JOHN J. ROSE 1920

FOLDER 2 PAGE 40

SET IRON PIPE

NO BT'S. IN NOTES

8/19/81 GB-MP-SB

CHAINED SZE FROM IRON AT CW'1/16 SEC. 4

137.5 AND FELL 25' EAST OF IRON PIPE

AT SW'1/16 - DISTANCE CHECKED OK

PLACE FSLP ON ASH 9 S22W - 13.0' FROM
IRON AT COR.

CORNER FALLS IN ASH SWAMP

8/29/81

SET 2" X 5' LONG GALVANIZED STEEL PIPE
WITH BRASS CAP MARKED

FD. 4' LONG POST LYING TISON R26W
BY IRON PIPE - ROSE'S.

RESET IRON BY SOUTH SIDE
OF MONUMENT

SW'1/16 S4

1981

RLS NO

WITNESSED BY

ASH 9 N11W - 42.27' MKD SW'1/16 S4 BT

ASH 6 N44W - 35.85' " " " " "

ASH 7 S50W - 29.02' " " " " "

ASH 9 S2E - 39.01' " " " " "

8' STEEL SIGN POST EAST 5.15'

8' STEEL SIGN POST NORTH 6.30'

SOUTH $\frac{1}{16}$ CORNER BET. SECTIONS 4-5

NOTES BY JOHN J. ROSE 1920

FOLDER 2 PAGE 39

SET CEDAR POST 4x4

MARKED BT'S.

SPRUCE 4 N85W 60'

SPRUCE 4 S34E 70'

8/24/81 CK-6B

CHAINED FROM SEC. COR. 4, 5, 8 & 9 NORTH

1318.5' - DISTANCE CHECKED OK

Fd. CEDAR POST LYING ON GROUND IN

GOOD CONDITION - Fd. BOTH OF ROSE'S BT'S.

ROTTED SPRUCE STUMP N78W 6.0'

ROTTED SPRUCE STUMP S23E 7.0'

CORNER FALLS IN BALSAM STAND ON HIGH GROUND

PLACE FSLP ON BALSAM 6" SOUTH 3.0' FROM

ROSE'S POST

8/29/81 CK-6B

SET 2" X 5" LONG GALVANIZED STEEL PIPE
WITH BRASS CAP MARKED

TISON R26W

S $\frac{1}{16}$

55 | 54

1981

RLS NO

WITNESSED BY

BALMIE 8 N25E - 38.88' MKD S $\frac{1}{16}$ 54 BT

OAK 4 S1W - 33.95' X BT

OAK 4 N76W - 99.0' X BT

ASH 3 N21W - 29.5' BT

ASH 6 N73W - 105.75 S $\frac{1}{16}$ 55 BT

8' STEEL SIGN POST NORTH 2.65'

CENTER QUARTER TO SECTION 5

NOTES BY JOHN J. ROSE 1921

FOLDER #2 PAGE 70

252316 FROM E¹/₄ SEC. 5

SET IRON PIPE

8/8/81 CK-6B

CHAINED FROM IRON FOUND AT CW¹/₁₆ SEC. 5

1348' E LINE FELL 90' NORTH OF ROSE'S IRON

FD. 1" X 36" IRON PIPE - 16" ABOVE GROUND

DISTANCE CHECK GOOD

CORNER FALLS IN ASPEN STAND

WOODS TRAIL NE-SW IS 75' NORTH OF COR.

PLACE FSLP ON ASPEN 10 N3W - 90' NORTH

OF COR. ON NORTH SIDE OF TRAIL

8/17/81

SET 2" X 5' GALVANIZED STEEL PIPE
WITH BRASS CAP MARKED

ROSE'S IRON RESET

TISON R26W

AT NORTH SIDE OF

C¹/₄ 55

MONUMENT

1981

RLS NO

WITNESSED BY

ASH	4	S84E	106.25'	mko	C ¹ / ₄ 55	BT
ASPEN	7	S12W	4.40'	"	"	"
ASPEN	8	N65W	35.45'	"	"	"
BASSWOOD	7	N8W	37.27'	"	"	"
8' STEEL SIGN POST EAST 3.6'						
8' STEEL SIGN POST WEST 5.1'						

CENTER WEST 1/16 TO SECTION 5

NOTES BY JOHN J. ROSE 1921

FOLDER #2 PAGE 70

SET 1/16 #9

MKD NEW BT'S.

CEDAR 4 S - E 33.6

BALSAM 4 S - W 9.4

8/8/81 CK-6B-TB

CHAINED EAST FROM IRON AT 1/4 SEC'S. 5-6

1348'E AND FELL 75' NORTH OF 1" X 36" IRON PIPE

MARKING CW 1/16 POSITION

IRON IS 12" HIGH - NO BT'S. FOUND

SET 3" X 8' ALDER STAKE BESIDE IRON

PUT FSLP ON 5" WILLOW S2W - 17.5' FROM IRON

CORNER IN HEAVY BRUSH SWAMP ALDER + WILLOW

NEWLY CONSTRUCTED FOREST ROAD TO EAST-NE

PLACE FSLP ON 13 ASPEN N1°E 339' FROM CW 1/16

ON NORTH SIDE OF WOOD ROAD NE-SW

8/17/81 GB-CK

SET 2" X 5' GALVANIZED STEEL PIPE
WITH BRASS CAP MARKEDROSE'S IRON AT NORTH
SIDE OF MONUMENT

T150N R26W

C ^{W 1/16} / 55 C

1981

RLS NO

WITNESSED BY

ASH 7 N9E 78.95' MKD CW 1/16 55 BT

ASH 6 S56E 38.95' " " " "

ASH 9 S32W 45.77' " " " "

BALMIE 11 N40W 53.25' " " " "

8' STEEL SIGN POST NORTH 3.8'

8' STEEL SIGN POST EAST 4.8'

WEST 1/16 CORNER NORTH LINE OF SECTION 5.

NOTES BY JOHN J. ROSE 1921

FOLDER #2 PAGE 77

SET IRON PIPE

2655.7 NORTH OF CW 1/16 SEC. 5

MKD NEW BT

TAM. 14 S33W 45.6'

8/7/81 CK-GB-TB

FROM ROSE'S. IRON PIPE AT NW COR. SEC. 5 - WE
RAN - EAST 1335' AND FELL 113' NORTH OF
IRON PIPE MARKING W 1/16 COR.

LINE SHOULD BE RUN AT S85E - DISTANCE
WAS OK - NO TRACE OF TAM. BT.

CORNER FALLS IN ALDER SWALE - THERE IS
A DRAINAGE DITCH NE-SW APPROX 40' SOUTH
OF CORNER

PLACE FSLP ON 4" ASH S60E 17.6' FROM IRON

8/14/81 GB-CK-JA

SET 2" X 5' GALVANIZED STEEL PIPE
WITH BRASS CAP MARKED

ROSE'S IRON RESET
AT NORTH SIDE OF
MONUMENT

W 1/16 S5

TISON R26W
1981

RLS NO

WITNESSED BY

ELM 10 S63E - 26.81 MKD W 1/16 S5 BT

ASH 6 S28W - 83.49 " " " "

BALMIE 13 S58W - 40.79 " " " "

BALMIE 7 S84W - 72.99 " " " "

8' STEEL SIGN POST WEST 4.0'

8' STEEL SIGN POST SOUTH 5.3'

NORTH $\frac{1}{16}$ CORNER BET. SEC'S. 5-6

NOTES OF J. ROSE - RLS 1920

SET: 1" x 36" Iron pipe

8/13/81 GB TO MP RD

Fd: 1" x 36" Iron pipe up 18" in place
 Chained north from $\frac{1}{4}$ between sec. 5
 and sec. 6 - Dist. checks good.

SET: placed FSLP on Ash 4" East 374'
 on west side of trail - corner falls in
 popple stand

5' Brass lapped Iron pipe ^{marked}
 up 18" above ground in place. TISON R266W
 of iron pipe which is on N $\frac{1}{16}$
 the north side of B.C. 56 | 55
 1981
 RLS No.

BTS:

Birch	4"	N43E	21.87'	} Blanked & scribed sprks tags red ring
Aspen	7"	S65E	40.90'	
Aspen	8"	S24E	36.10'	
Aspen	7"	S30W	26.50'	
Aspen	7"	N49W	38.10'	
Steel sign post	3" x 8"	North	5.5'	} All & Bdry signs
"	"	South	4.0'	

SOUTH 1/16 CORNER BET. SEG'S. 5-6

NOTES OF J. ROSE RLS 1920

SET: 1" x 36" Iron pipe and wood
post scribed

8/10/81 CK GB TB SB

Fd: 1" x 36" iron pipe in place 1.0'
above ground - also burred wood
post along side of iron pipeChained from S.C. 56.7.8 North to S 1/4
1932.0 Dist checks good. Corner
falls in alder and ash swamp

Woods trail is North 630' running SW-NE

SET: 5' Brass Capped Iron pipe ^{marked}
up 1' in place of Iron pipe TISON R26W
which is on North side of B.C. S 1/4
56 | 55

PTS:

Ash	4"	N24W	30.0'	S 1/4	56 BT	} spks
Ash	4"	N29E	14.05'	"	x BT	
Ash	6"	S22E	61.30'	S 1/4	55 BT	} red rings
Ash	6"	S32W	69.20'	S 1/4	56 BT	

Steel sign post	3" x 8	North	5.05'	} All 4.00 by signs
"	"	South	4.85'	

Line to standard North & South

CENTER WEST $\frac{1}{16}$ CORNER TO SEC. 8

NOTES BY JOHN J. ROSE 1920

FOLDER 3. PAGES 76-87

SET IRON PIPE

9/11/81 JA-JO

CHAINED WEST FROM IRON FOUND AT C $\frac{1}{4}$

SEC. 4 - 1334' DISTANCE CHECKED OK

CONTINUE CHAINING WEST TO W $\frac{1}{4}$ DISTANCE

WAS 1335' - 1.0' LONGER

FD. 1" X 30" IRON PIPE MARKING CW $\frac{1}{16}$ COR.

9/11/81 JA-JO

SET 2" X 5' LONG GALVANIZED STEEL PIPE
WITH BRASS CAPS MARKED

TISON R26W

C $\frac{W}{16}$ C
SB
1981

RLS NO

WITNESSED BY

ASH 5 N44W - 20.40' MKD CW $\frac{1}{16}$ SB BT

ASH 6 N32E - 35.82' " " "

OAK 4 N76E - 56.75' " " "

ASH 4 S38W - 59.14

8' STEEL SIGN POST NORTH 5.10'

8' STEEL SIGN POST EAST 5.10'

CENTER QUARTER CORNER TO SEC. 8

NOTES BY JOHN J. ROSE 1920

FOLDER #3 PAGES 76-87

SET IRON PIPE

9/11/81 JA-JD

CHAINED LINE FROM SOUTH 2728' - THEN CHAINED
LINE EAST 1316.5 TO IRON AT C¹/₄

AND CHAINED LINE WEST TO IRON AT C¹/₄

FD. 1" X 30" IRON PIPE MARKING C¹/₄ POSITION

FENCE LINE EAST - FENCE CORNER WEST 10'

AND FENCE LINE SOUTH

9/11/81

SET 2" X 5' LONG GALVANIZED STEEL PIPE
WITH BRASS CAP MARKED

T15DNR26W

C¹/₄.58

1981

RLS NO

WITNESSED BY

OAK 5 N74E - 53.76' MID C¹/₄ 58 BT

OAK 6 N37W - 118.57' " "

ELM 12 N64W - 32.23' " "

ASH 6 S41E - 76.58' " "

8' STEEL SIGN POST EAST 5.67'

8' STEEL SIGN POST WEST 5.00'

CENTER EAST $\frac{1}{16}$ CORNER TO SECTION 8

NOTES By JOHN J. ROSE 1920

FOLDER 3. PAGES 76-87

SET 1" X 36" IRON PIPE

9/10/81 JA-JO

CHAINED FROM IRON FOUND AT C $\frac{1}{4}$ 1316.5'

CONTINUE EAST TO E $\frac{1}{4}$ - 1317' - 1.5' LONGER

THEN ROSE'S. DISTANCE

FD. 1" X 30" IRON PIPE MARKING CE $\frac{1}{16}$

FENCE LINE SOUTH AND 8' SOUTH OF IRON

FENCE LINE RUNNING WEST

06-13-2011 R MAIN

FD IRON IN PLACE AND GPS. IRON IS $\pm 15'$ SOUTH OF FR 3653. SPRUCE PLANTATION EAST

MIXED HARDWOODS NORTH & WEST. ALSO FOUND

HEAVY STEEL SIGN POST NORTH 4.85' TO E OF

POST W/ FS SIGNS.

9/10/81 JA-JO

SET 2" X 5' LONG GALVANIZED STEEL PIPE WITH BRASS CAP MARKED

TISON R 26W

C $\frac{E \frac{1}{16}}$ C
58

1981

RLS NO.

WITNESSED BY

OAK ^{NOW 11"} 5 N 59 W - 26.70' MKD CE $\frac{1}{16}$ 58 BT

ASH ^{NOW 12"} 6 N 9 E - 55.82' " " "

ASH ^{NOW 12"} 6 N 40 E - 40.92' " " "

BALMIE ^{NOW 11"} 7 S 4 W - 30.85' " " "

8' STEEL SIGN POST EAST 4.60'

8' STEEL SIGN POST WEST 8.05'

SOUTH 1/16 CORNER BET. SEC 5, 7-8

NOTES BY JOHN J. ROSE 1921

FOLDER #3 PAGE 87

SET 1/16 POST

SPRUCE 5 N93W 15.7'

NO EVIDENCE AT S87W 15.7'

TAM. 6 N47E 11.5

Fd. TAM STP. 9 N45E 11.5' ROTTED

6/11/80 CK-JS

CHAINED NORTH FROM CENTER OF COUNTY RD #31

1390.5' - LINE FELL 20' WEST OF IRON

Fd. 1" x 36" IRON PIPE - IN FLOODED SWAMP

NW-SE - SET 3x3x6' TAM POST ALONGSIDE

IRON - PUT FSLP ON BLK. SPRUCE 4" N55E

65.0' FROM IRON

7/14/81 JA

SET 2" X 5' LONG GALVANIZED STEEL PIPE
WITH BRASS CAP MARKEDRESET IRON
BESIDE MONUMENT

TISON R26W

S116

S7 | S8

1981

RLS NO

WITNESSED BY

8' STEEL SIGN POST NORTH 6.0'

" " " " WEST 6.0'

" " " " EAST 6.0'

WEST $\frac{1}{16}$ BET. SEC'S. 6-7

NOTES OF JOHN J. ROSE RLS 1920

FOLDER #1 PAGE 15

SET CEDAR POST FD. CEDAR POST (SOLID)

MKD. $\frac{1}{16}$ ON E SIDE AND $\frac{1}{16}$ ON W SIDE

CEDAR 4 N55W 13.0'

INSIDE

NOW 8 CEDAR N35W 13.5' SCRIBE VISIBLE

CEDAR 5 S33E 22.0'

INSIDE

NOW 9 CEDAR S72E 22.0' SCRIBE VISIBLE

CHAINED S87E FROM SEC. COR. ON RANGE LINE
1415' AND FELL 10' NORTH OF SCRIBED CEDAR
POST MARKING $\frac{1}{16}$ COR. - POST WAS SOLID
AND IN GOOD CONDITION STANDING IN PLACE
PUT FSLP ON 10" BLK. SPRUCE N87E 26.9'
FROM CEDAR POST
SET 4" X 4" X 8' NEW CEDAR POST ALONGSIDE
OLD POST AND TAG BTX. BY ROSE
OLD SURVEY LINE EAST AND WEST IS VISIBLE
IN CEDAR SWP.

CK-JW-TB

10-24-80

Curtis R. Kramer